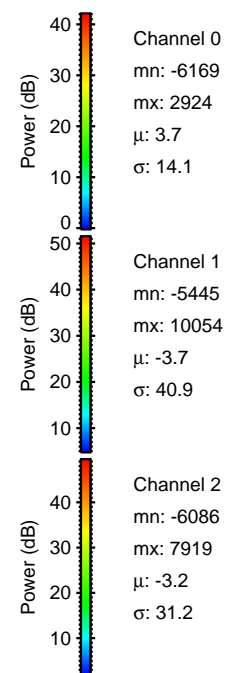
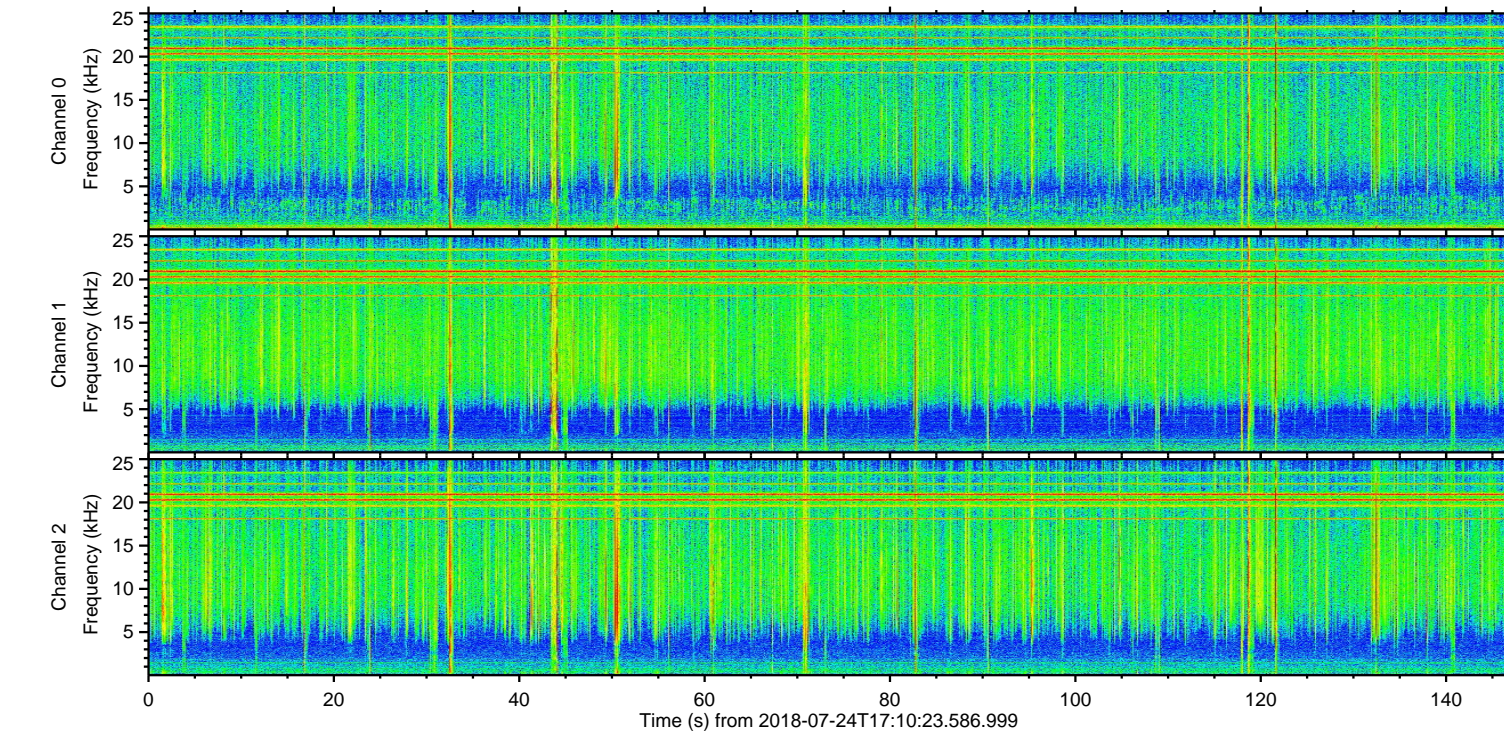
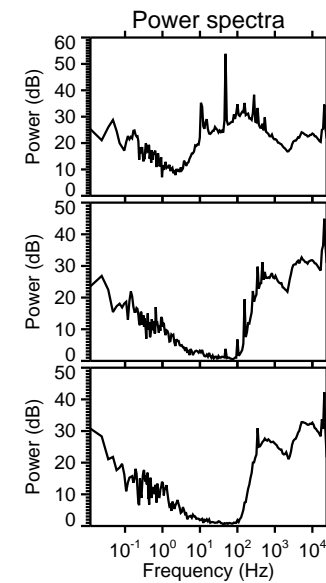
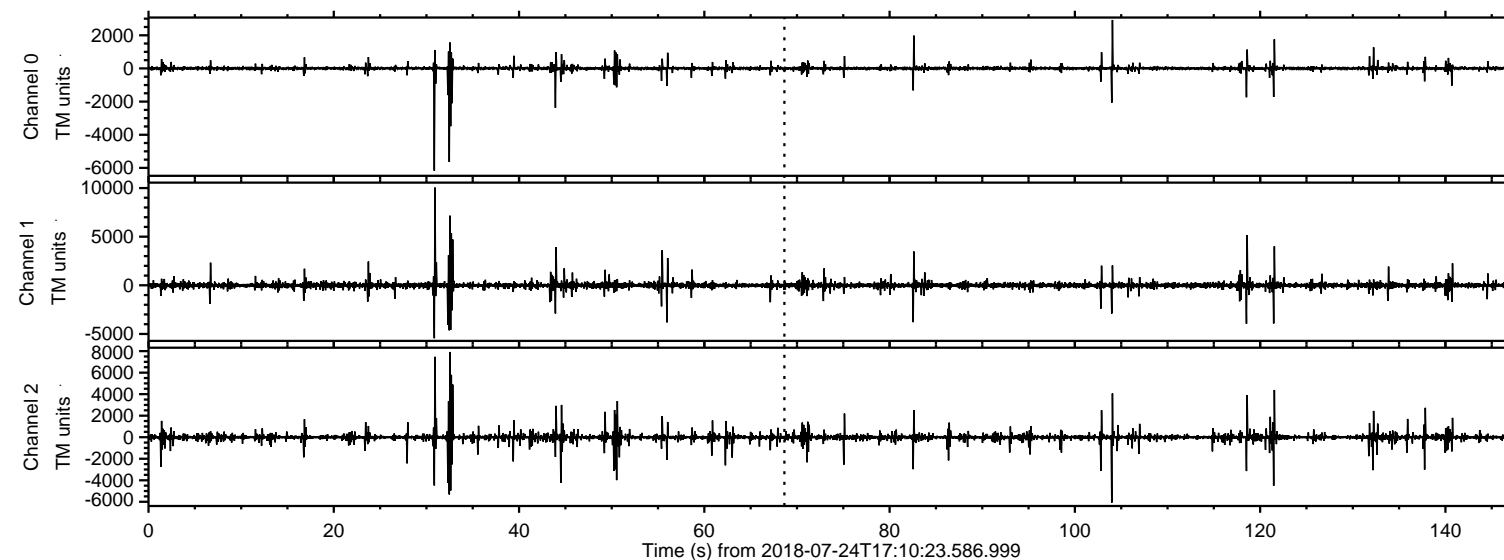
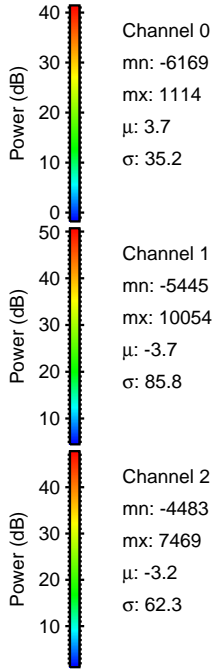
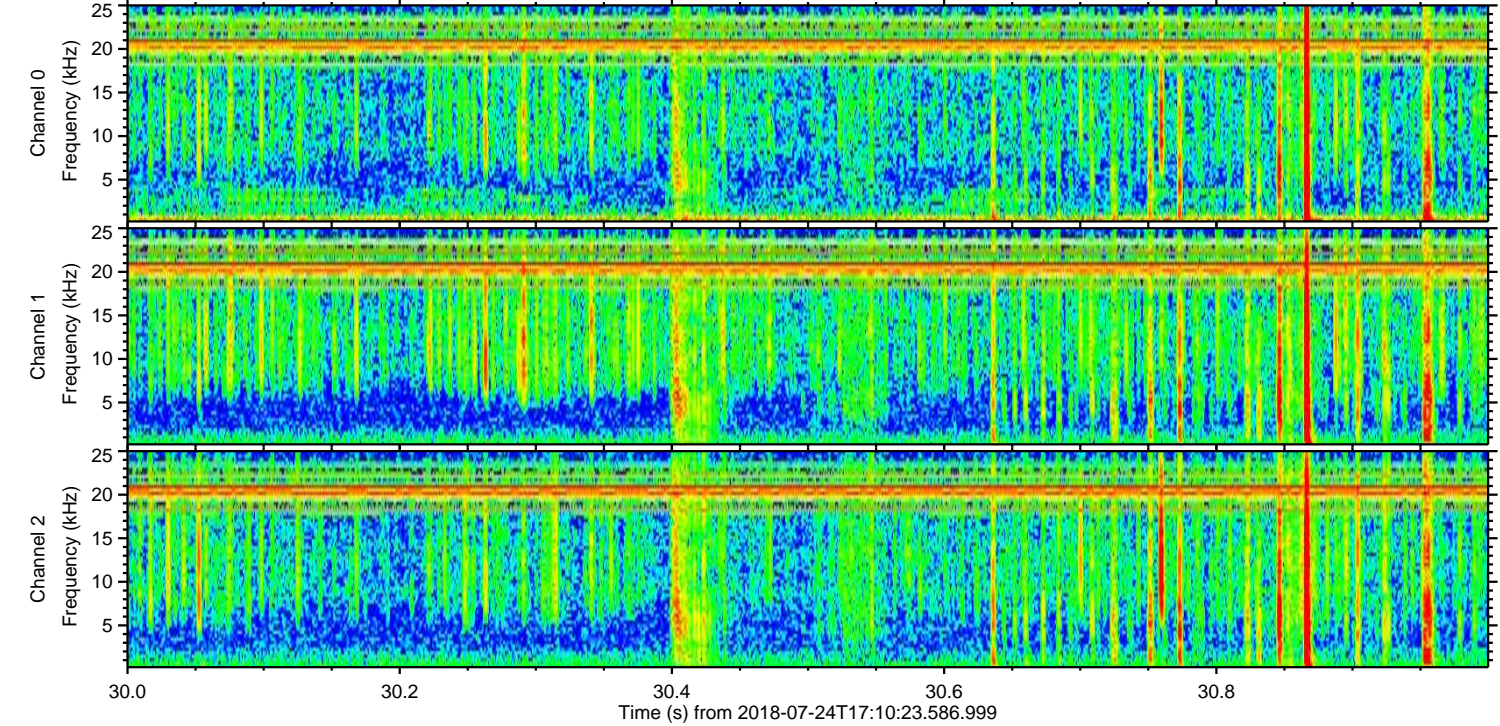
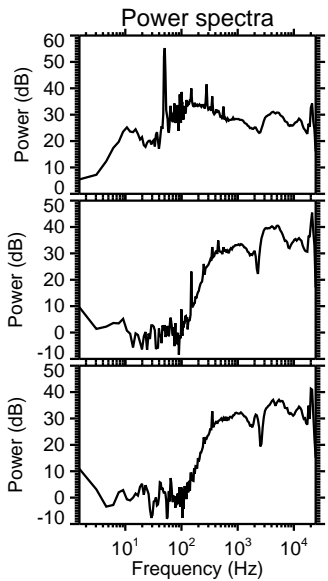
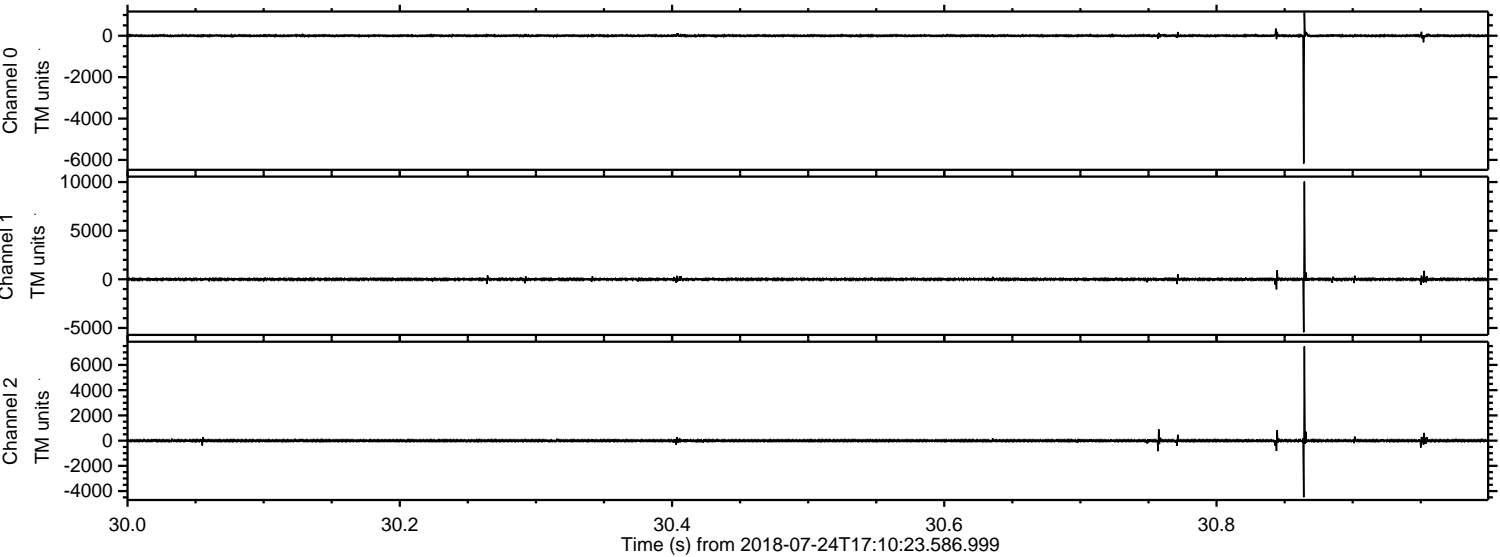


ELMAVAN 3D WAVEFORMS (Measured data sampled at 50 kHz) 50999 packets of 144 samples from 2018-07-24T17:10:23.586.999.

Processed Tue Jul 24 19:18:01 2018 by ELM ver.2012-10-06 from 001__elm20180724_171022__dat00.bin

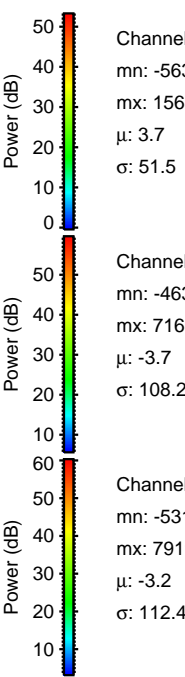
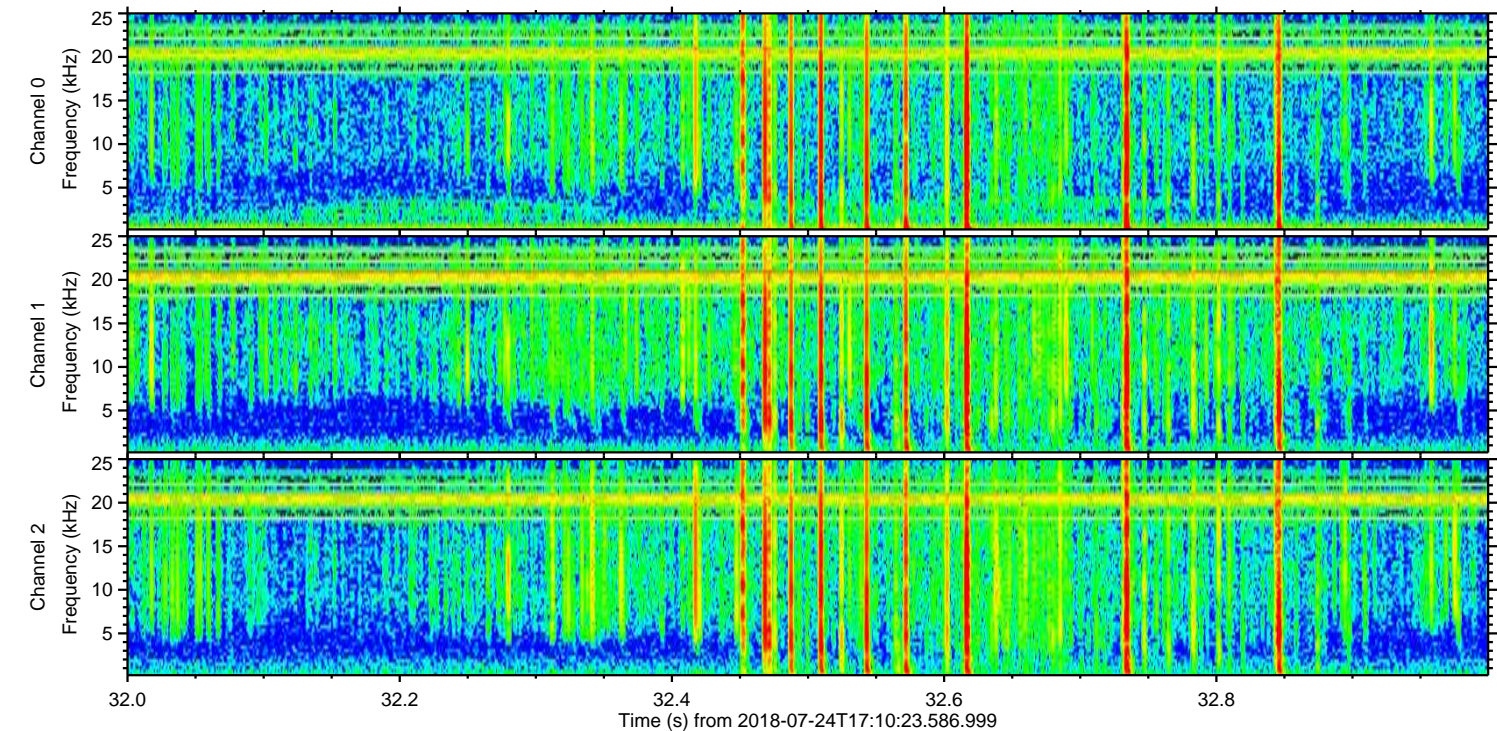
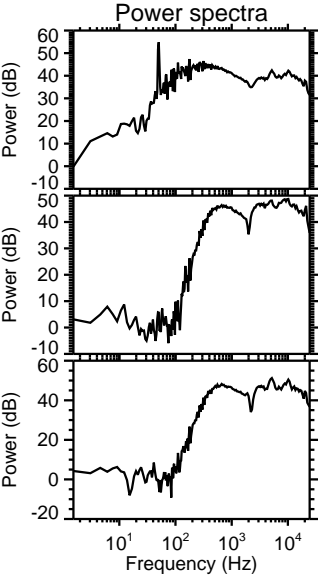
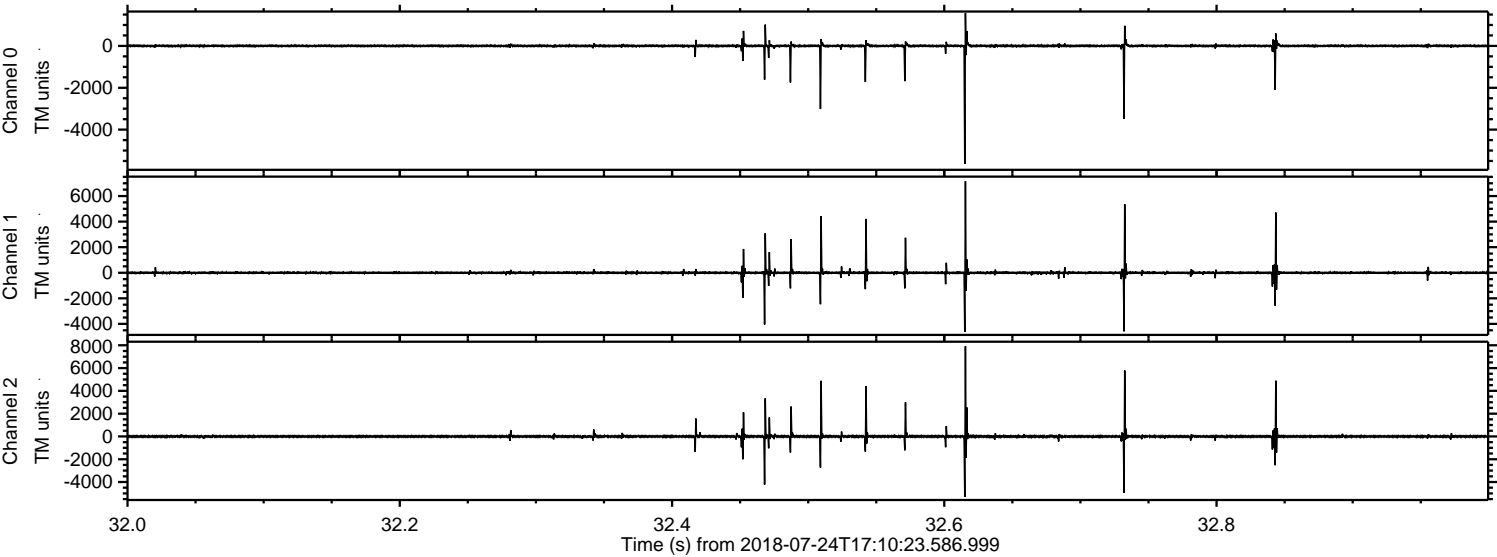


Processed Tue Jul 24 19:18:06 2018 by ELM ver.2012-10-06 from 001__elm20180724_171022__dat00.bin



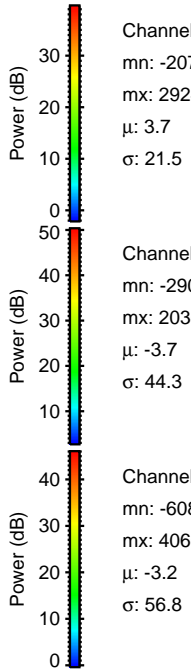
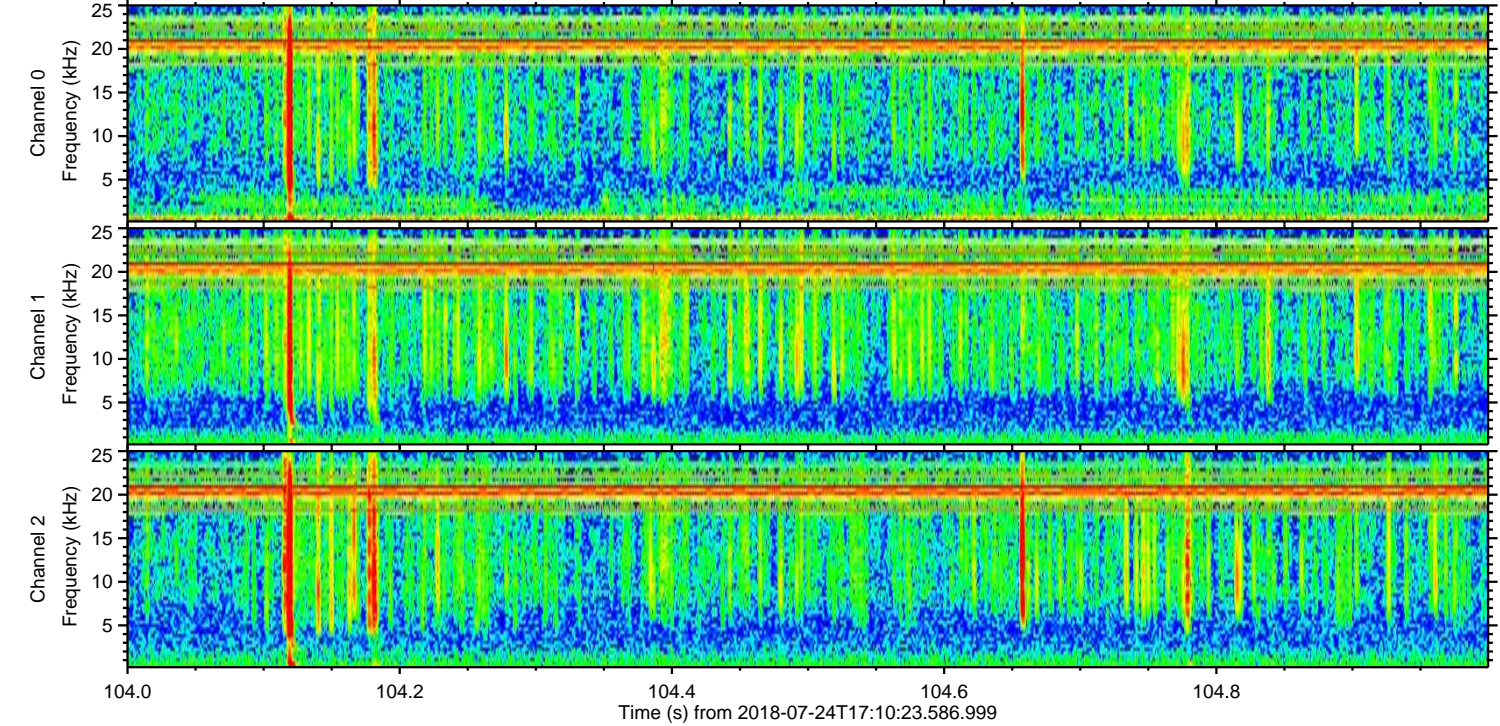
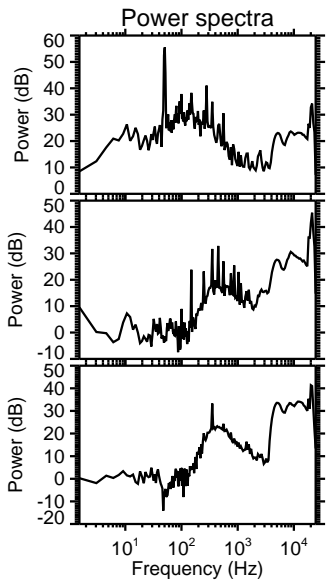
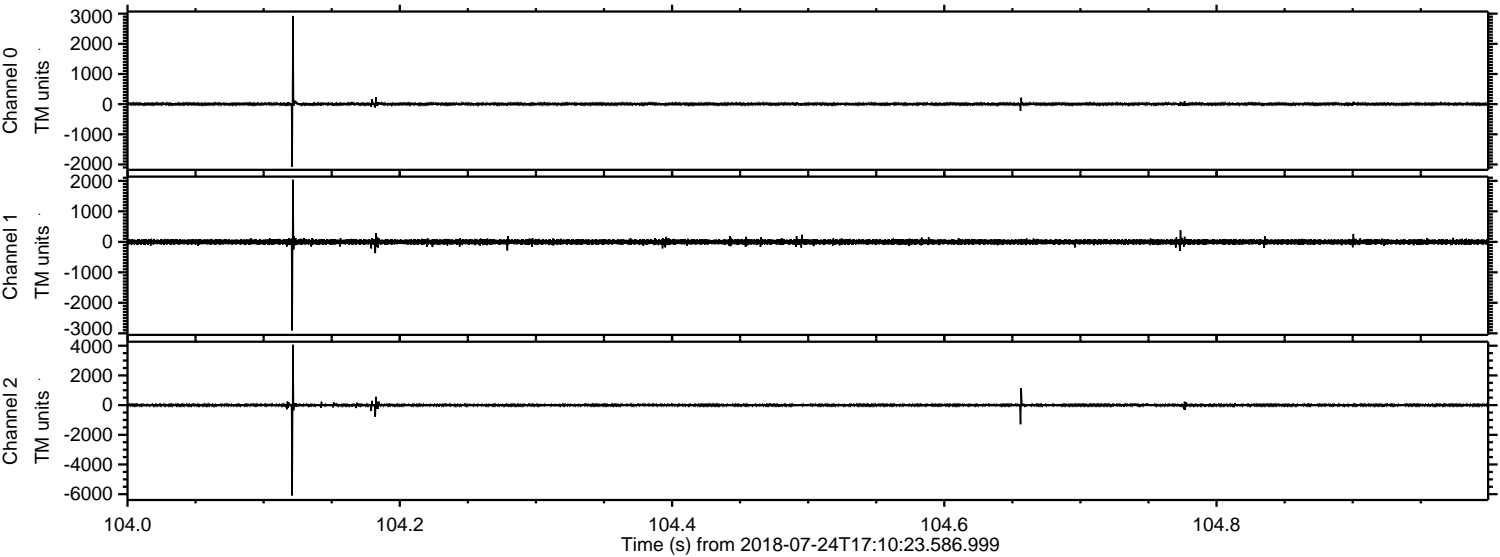
ELMAVAN 3D WAVEFORMS (Measured data sampled at 50 kHz) 50999 packets of 144 samples from 2018-07-24T17:10:23.586.999. Part 33/147

Processed Tue Jul 24 19:18:07 2018 by ELM ver.2012-10-06 from 001__elm20180724_171022__dat00.bin



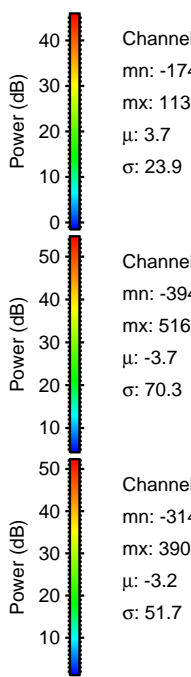
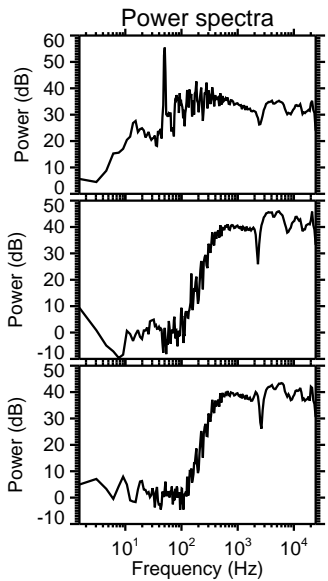
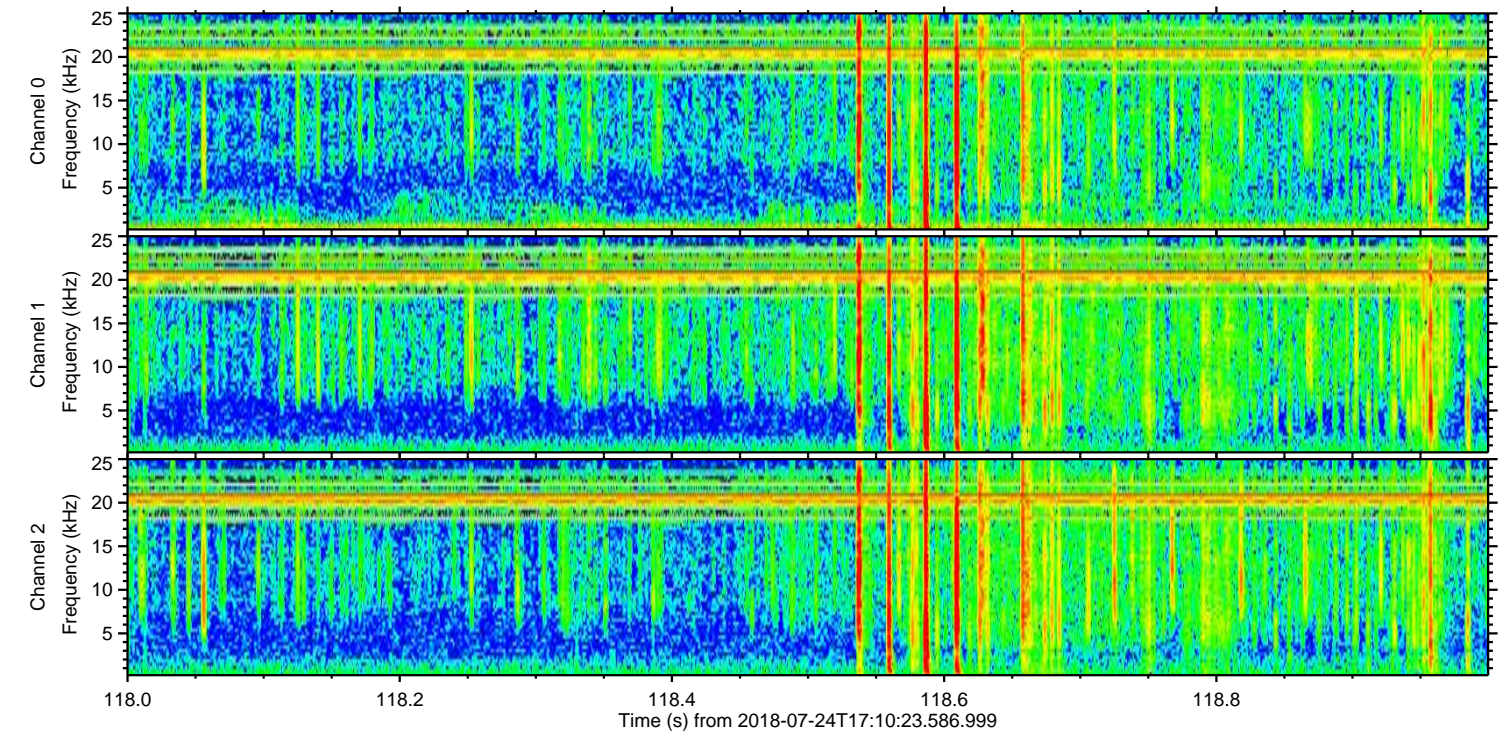
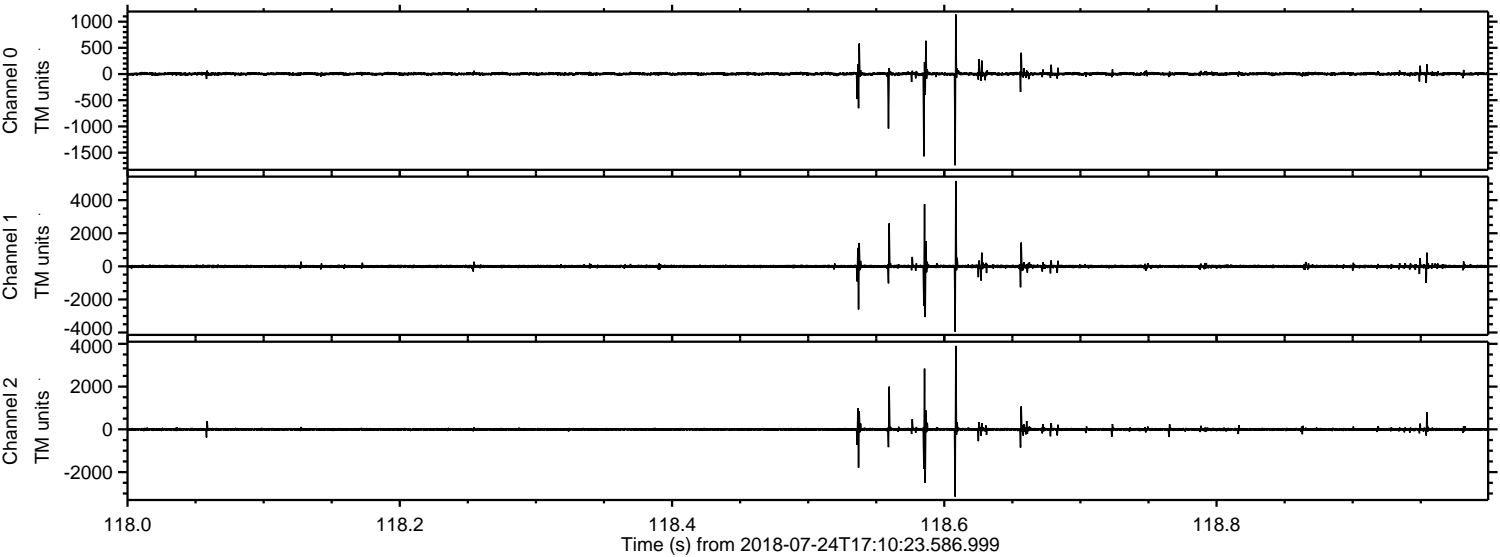
ELMAVAN 3D WAVEFORMS (Measured data sampled at 50 kHz) 50999 packets of 144 samples from 2018-07-24T17:10:23.586.999. Part 105/147

Processed Tue Jul 24 19:18:08 2018 by ELM ver.2012-10-06 from 001__elm20180724_171022__dat00.bin



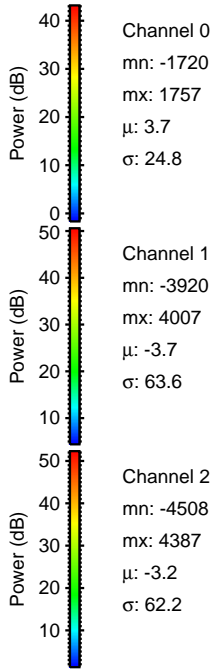
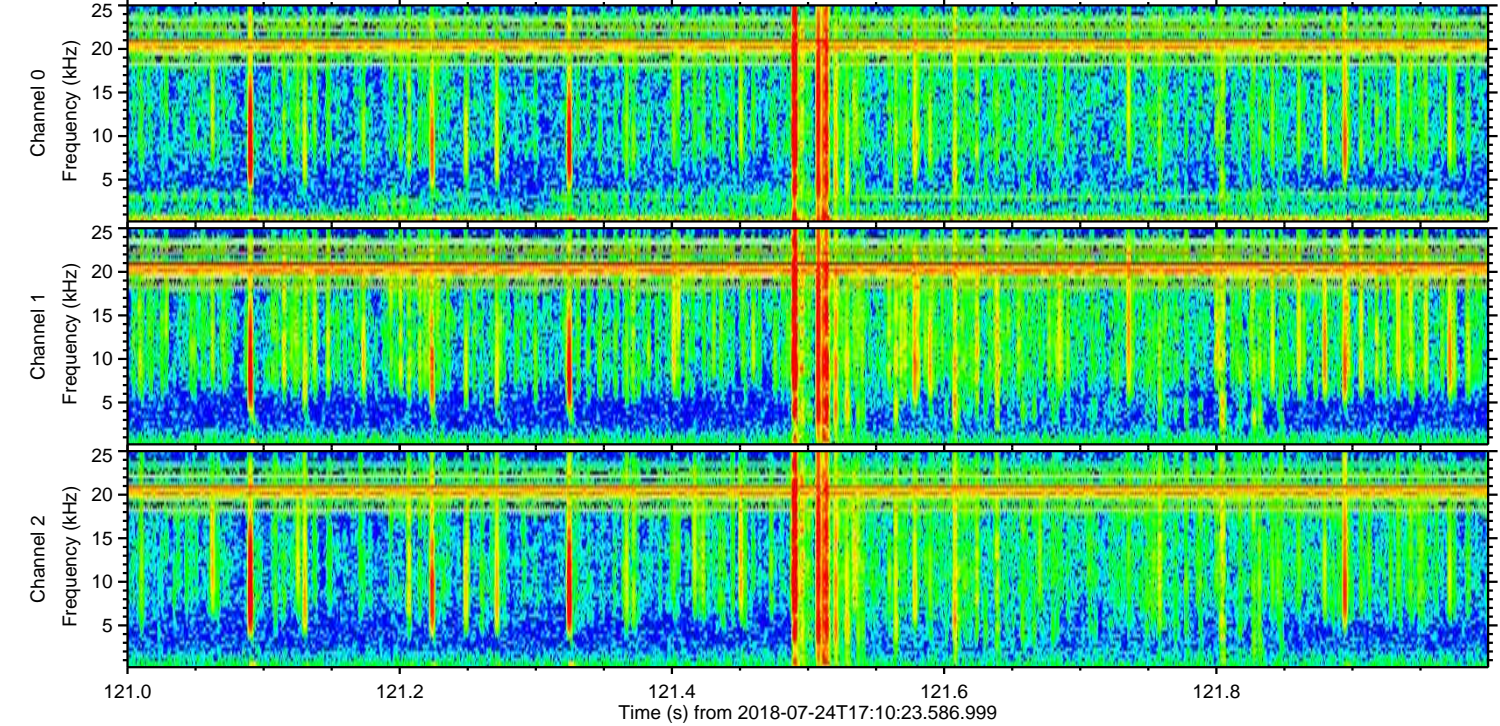
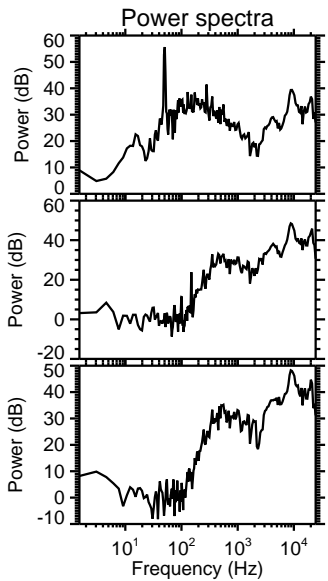
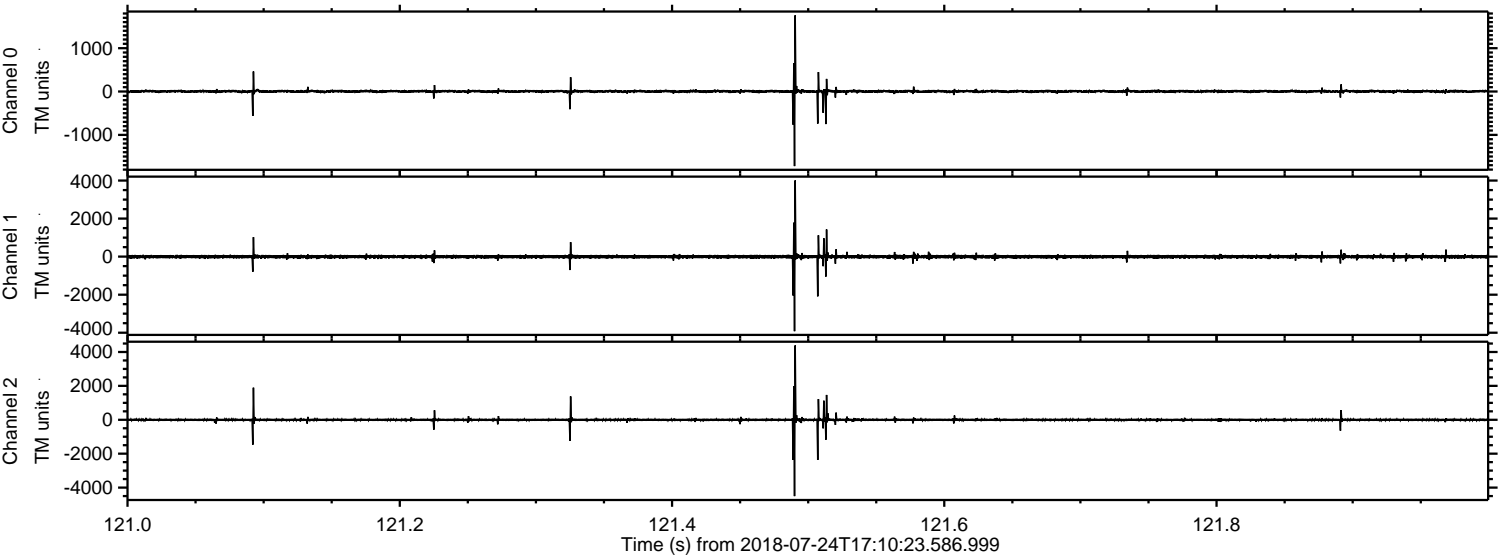
ELMAVAN 3D WAVEFORMS (Measured data sampled at 50 kHz) 50999 packets of 144 samples from 2018-07-24T17:10:23.586.999. Part 119/147

Processed Tue Jul 24 19:18:09 2018 by ELM ver.2012-10-06 from 001__elm20180724_171022__dat00.bin

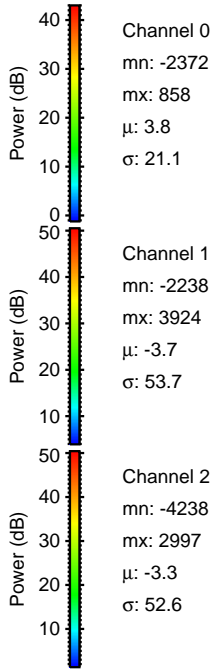
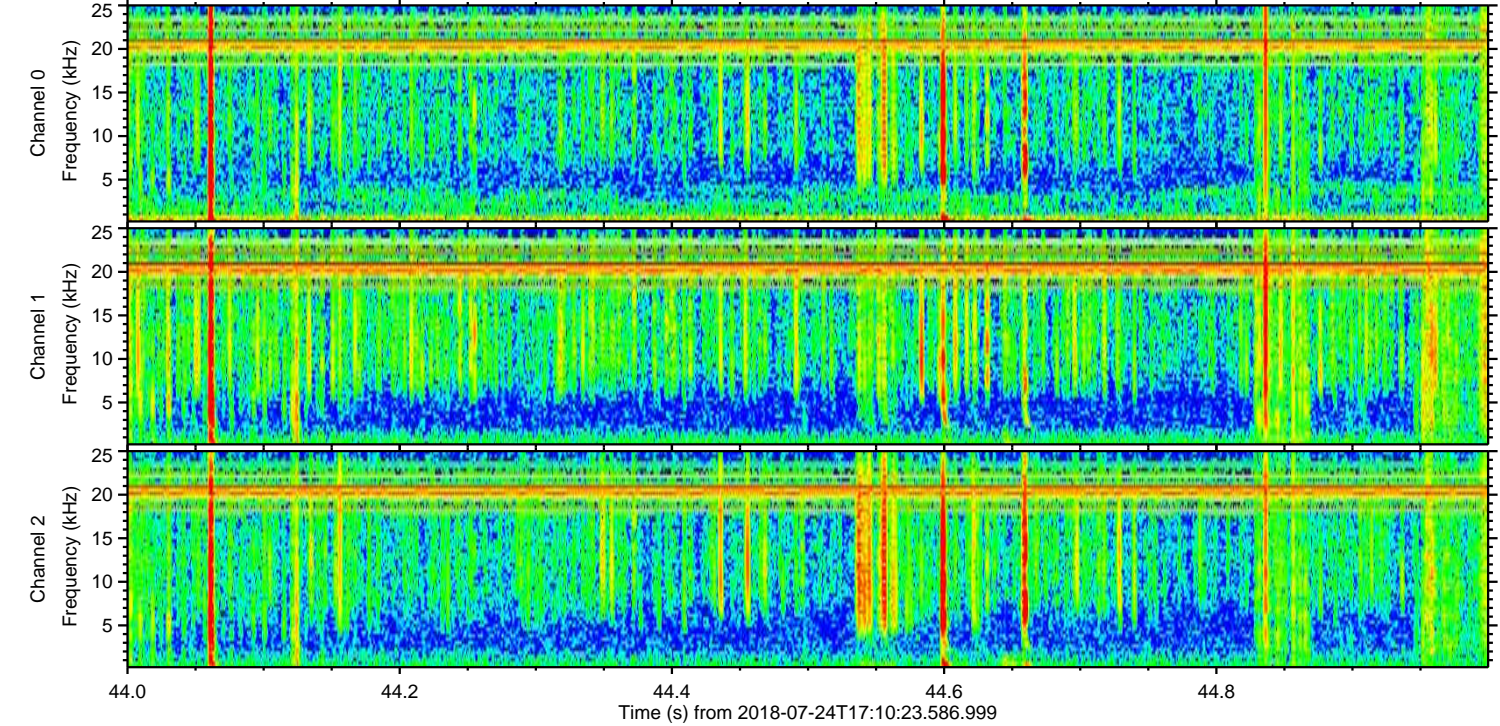
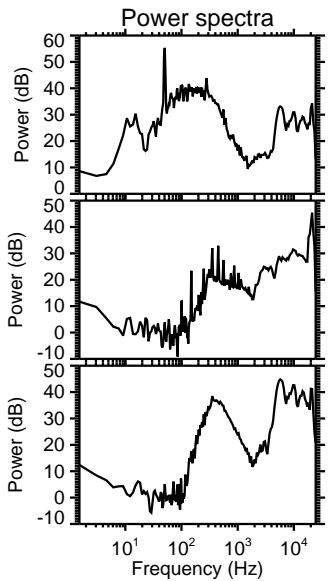
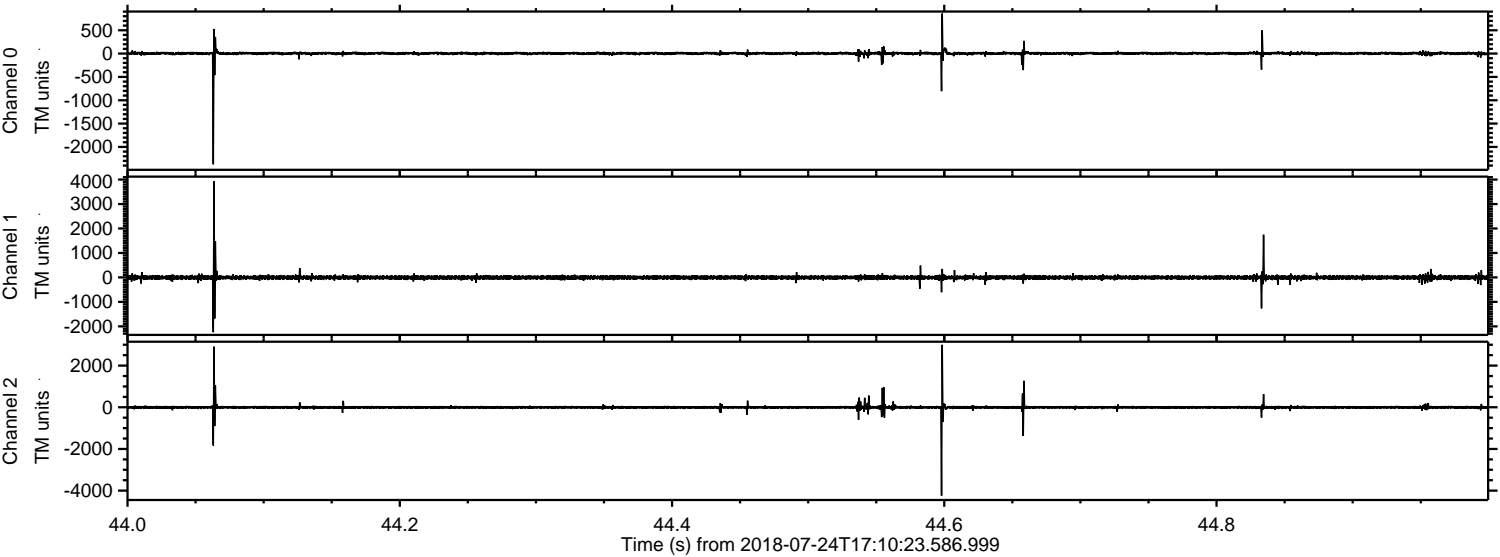


ELMAVAN 3D WAVEFORMS (Measured data sampled at 50 kHz) 50999 packets of 144 samples from 2018-07-24T17:10:23.586.999. Part 122/147

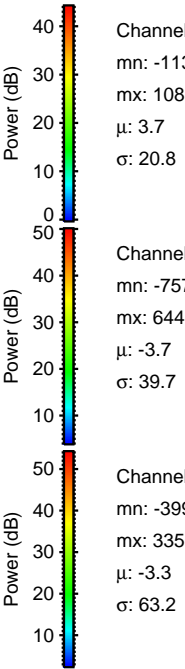
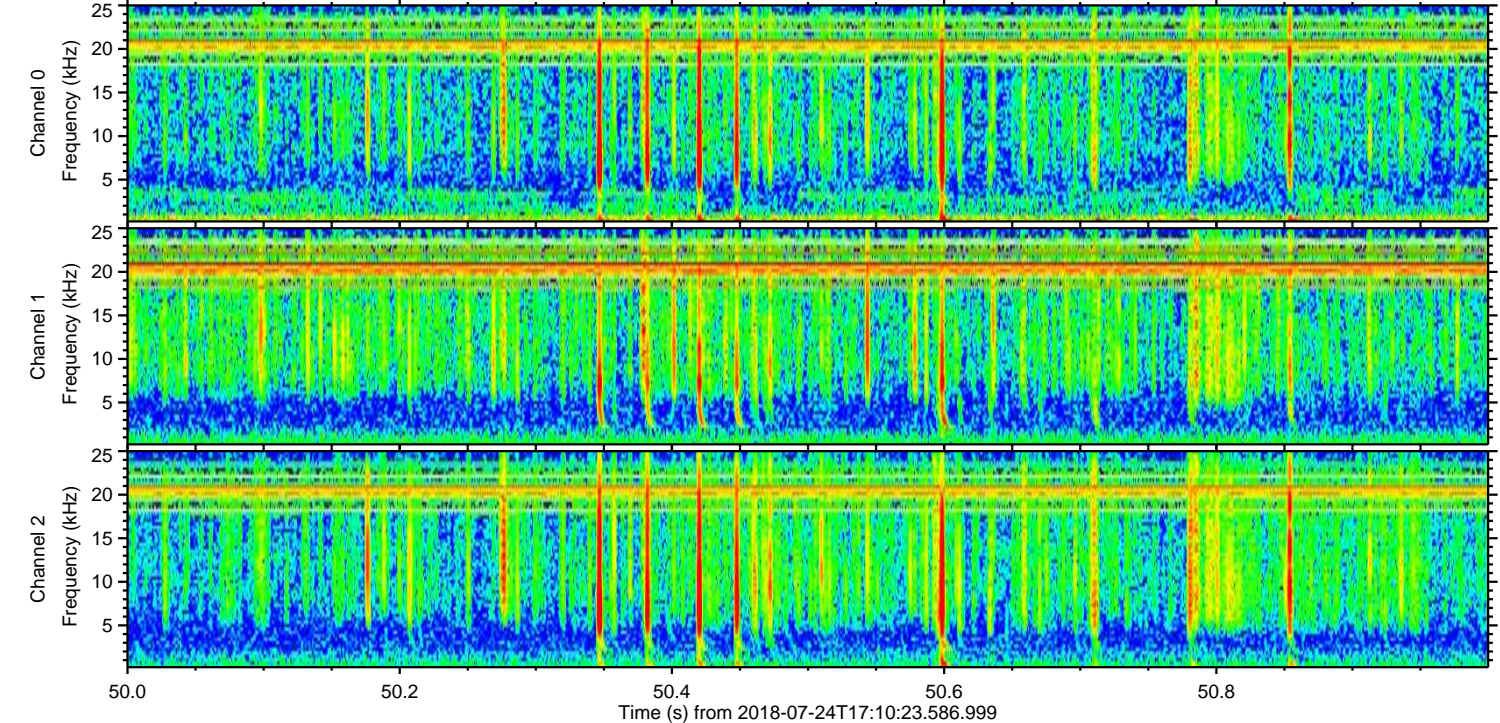
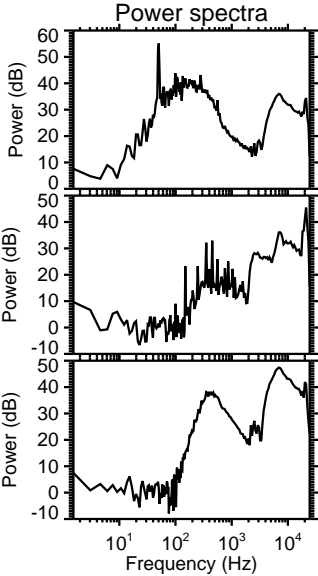
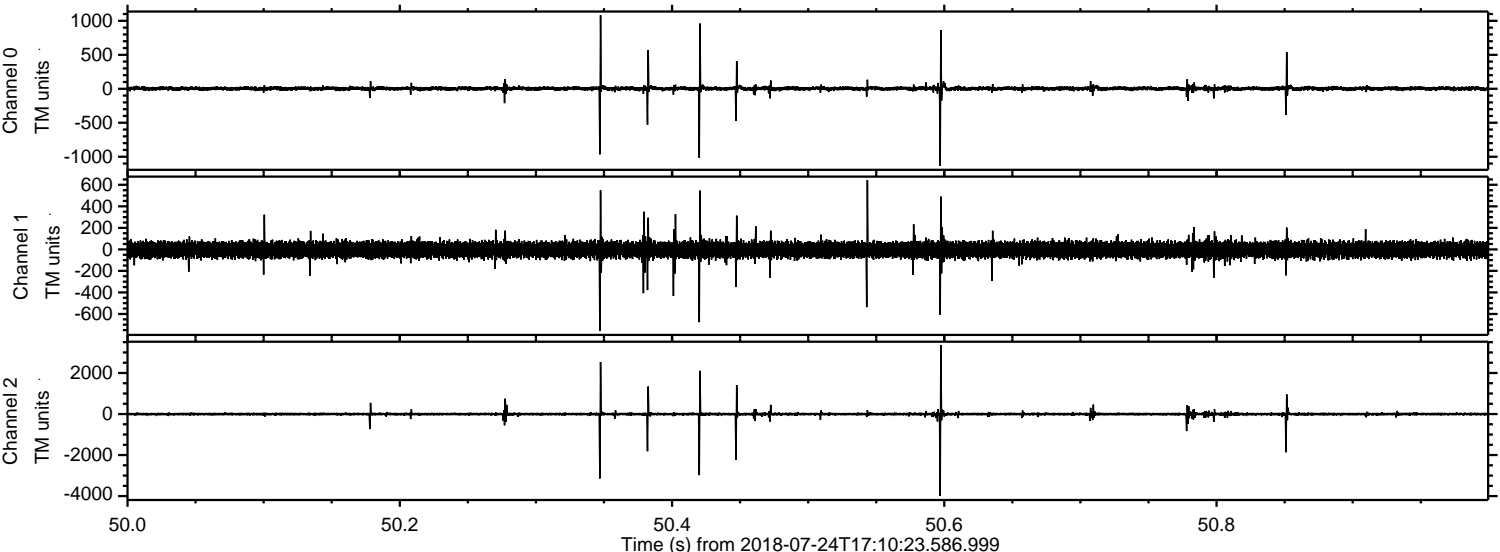
Processed Tue Jul 24 19:18:09 2018 by ELM ver.2012-10-06 from 001__elm20180724_171022__dat00.bin



Processed Tue Jul 24 19:18:10 2018 by ELM ver.2012-10-06 from 001__elm20180724_171022__dat00.bin



Processed Tue Jul 24 19:18:10 2018 by ELM ver.2012-10-06 from 001__elm20180724_171022__dat00.bin

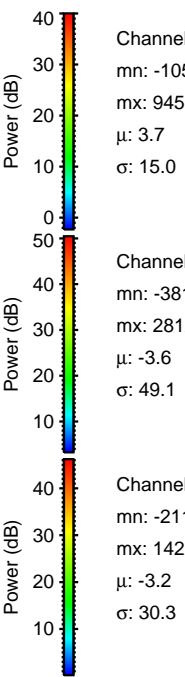
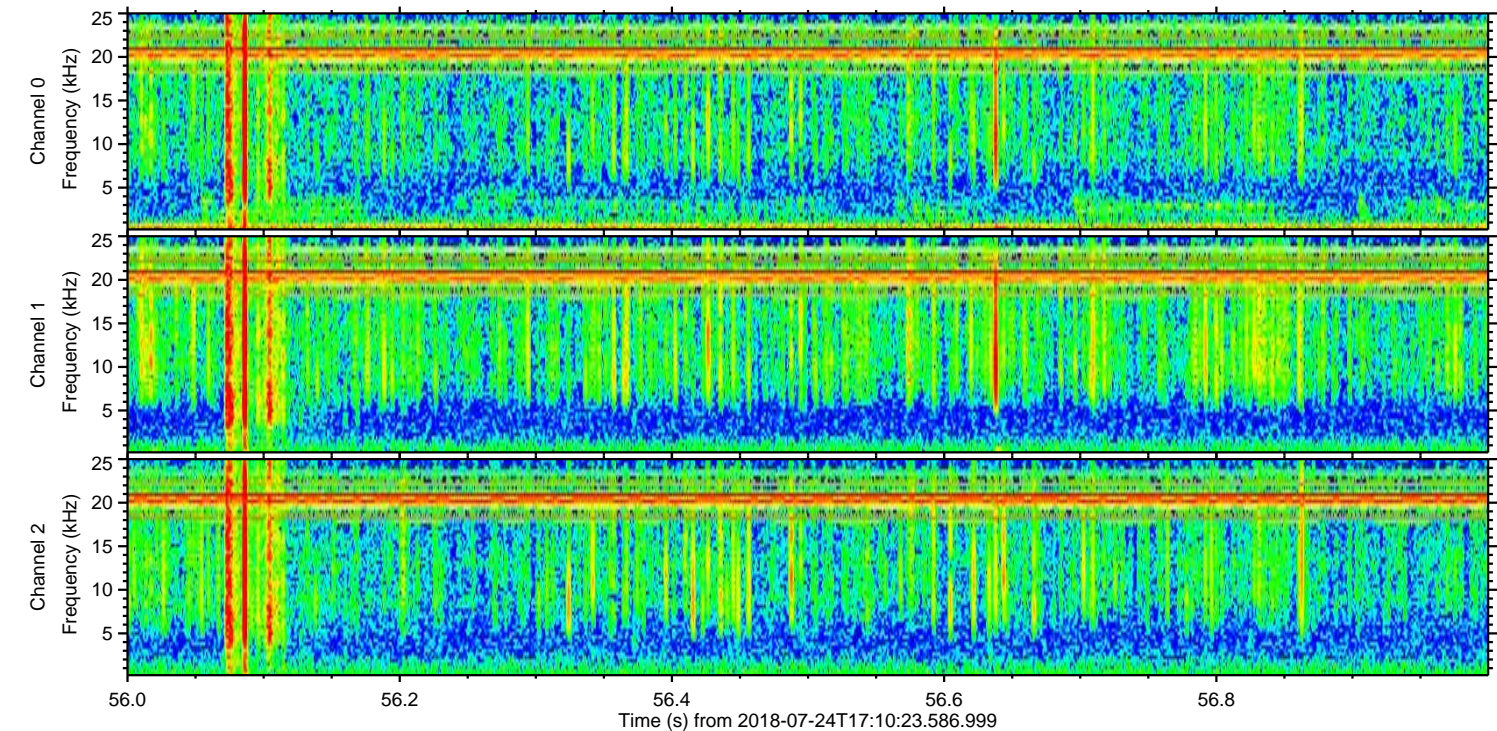
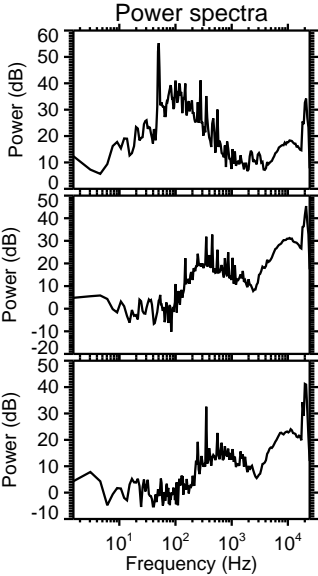
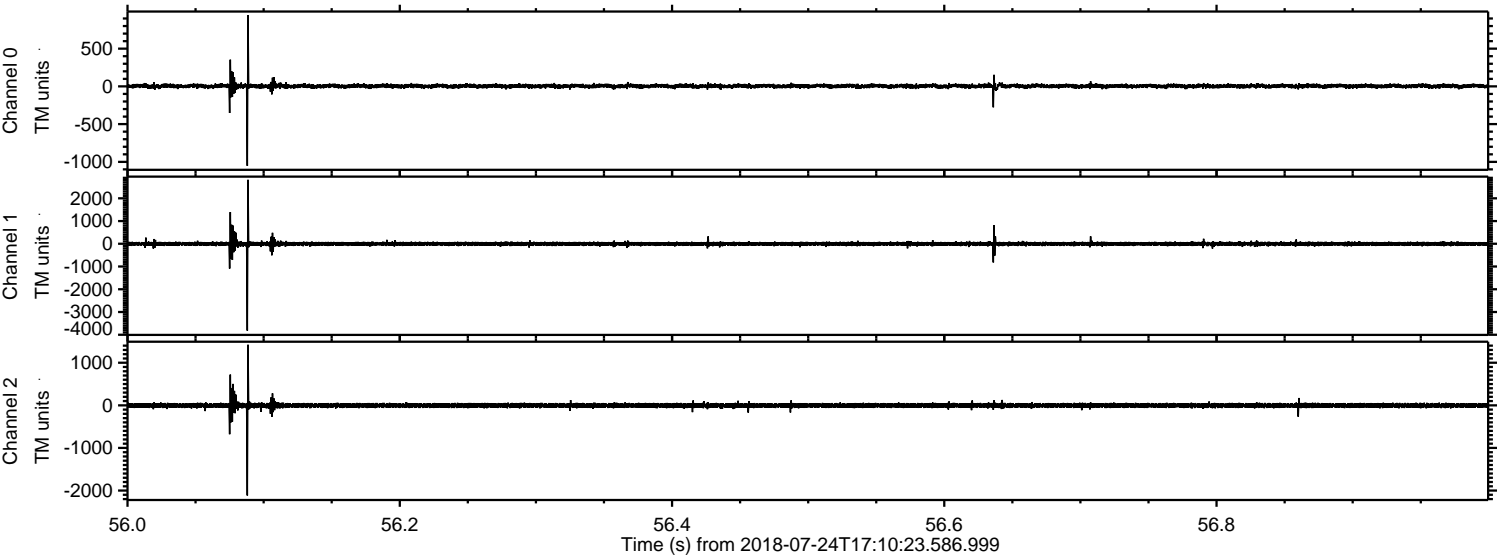


Channel 0
mn: -1136
mx: 1083
 μ : 3.7
 σ : 20.8

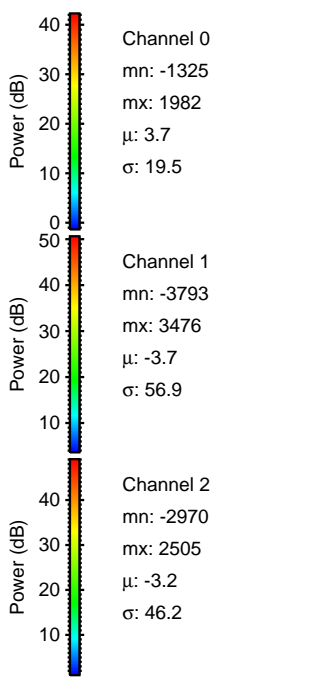
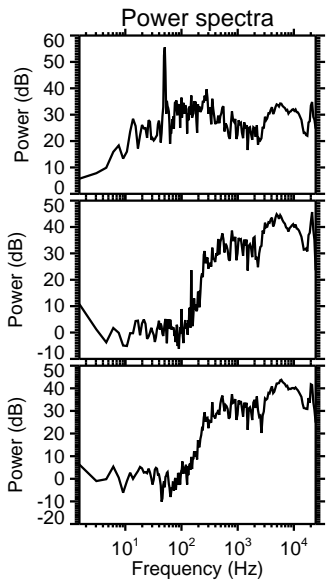
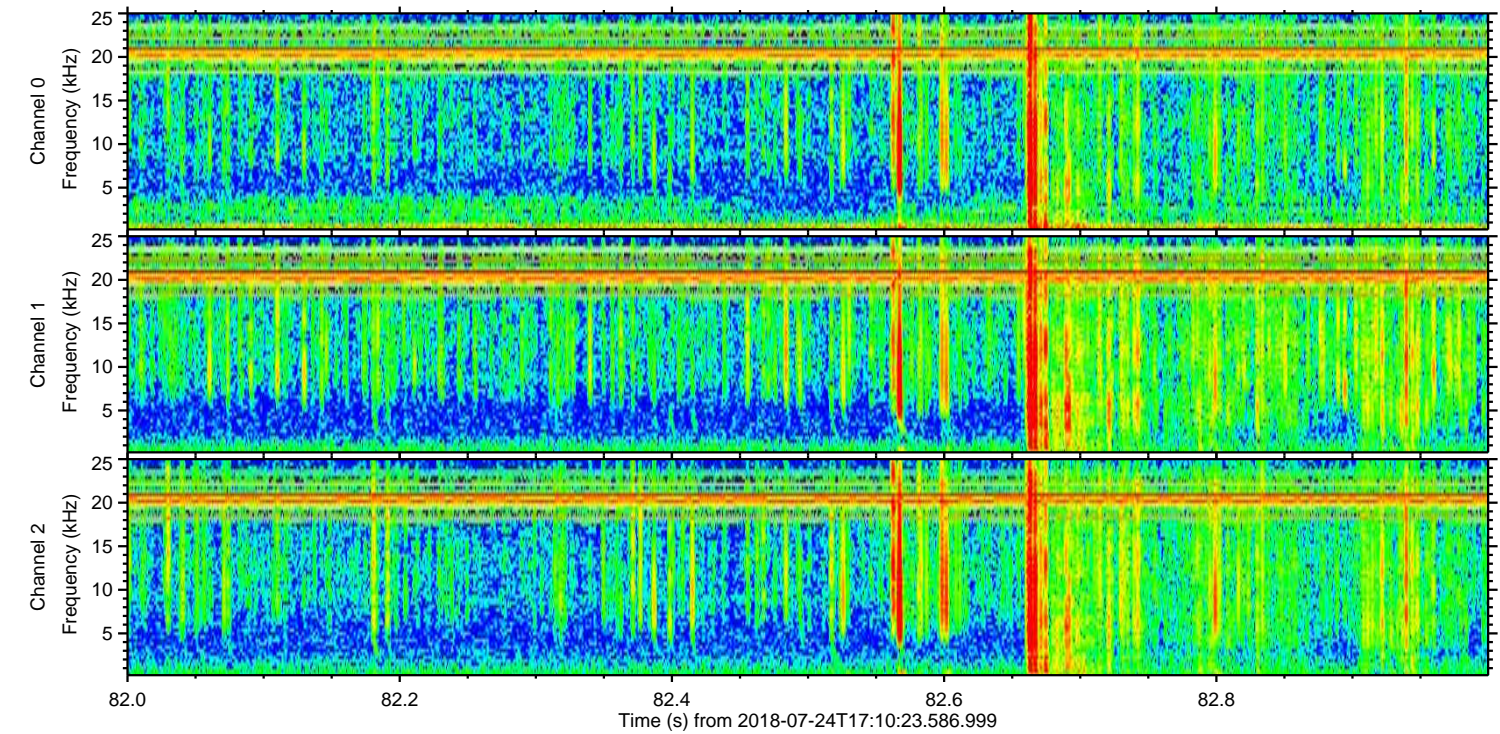
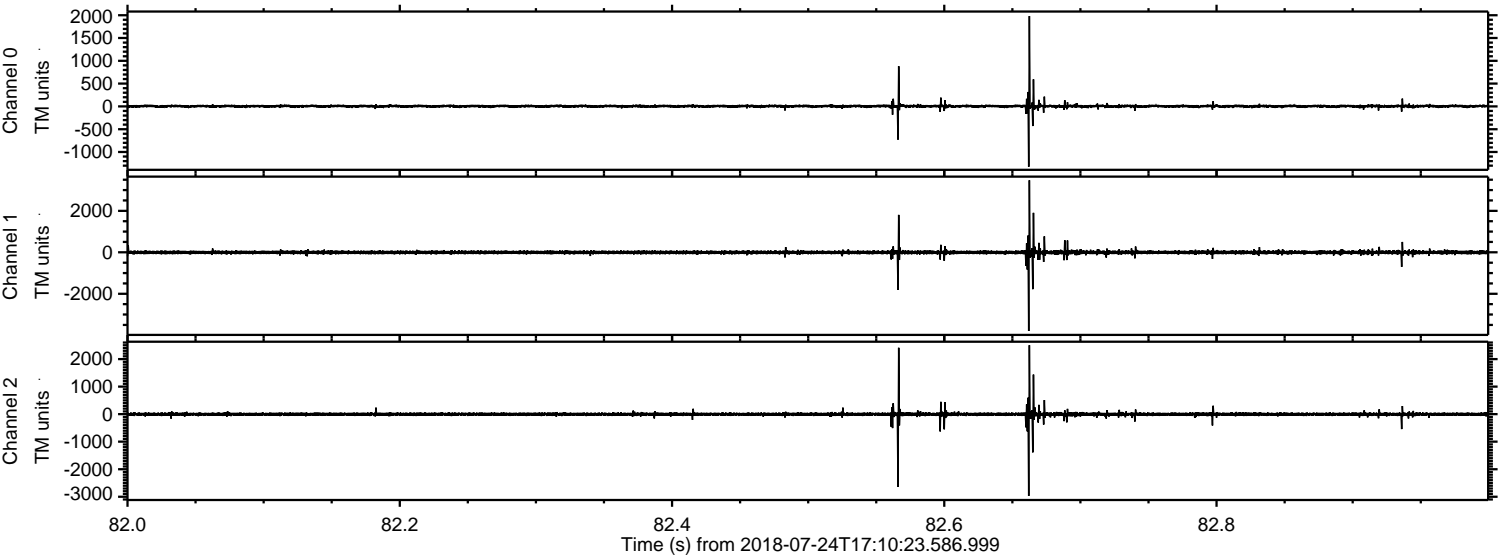
Channel 1
mn: -757
mx: 644
 μ : -3.7
 σ : 39.7

Channel 2
mn: -3991
mx: 3356
 μ : -3.3
 σ : 63.2

Processed Tue Jul 24 19:18:11 2018 by ELM ver.2012-10-06 from 001__elm20180724_171022__dat00.bin



Processed Tue Jul 24 19:18:12 2018 by ELM ver.2012-10-06 from 001__elm20180724_171022__dat00.bin



Processed Tue Jul 24 19:18:12 2018 by ELM ver.2012-10-06 from 001__elm20180724_171022__dat00.bin

