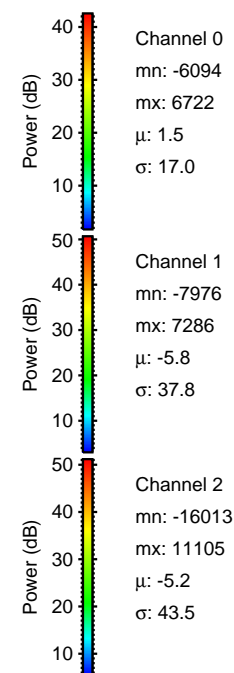
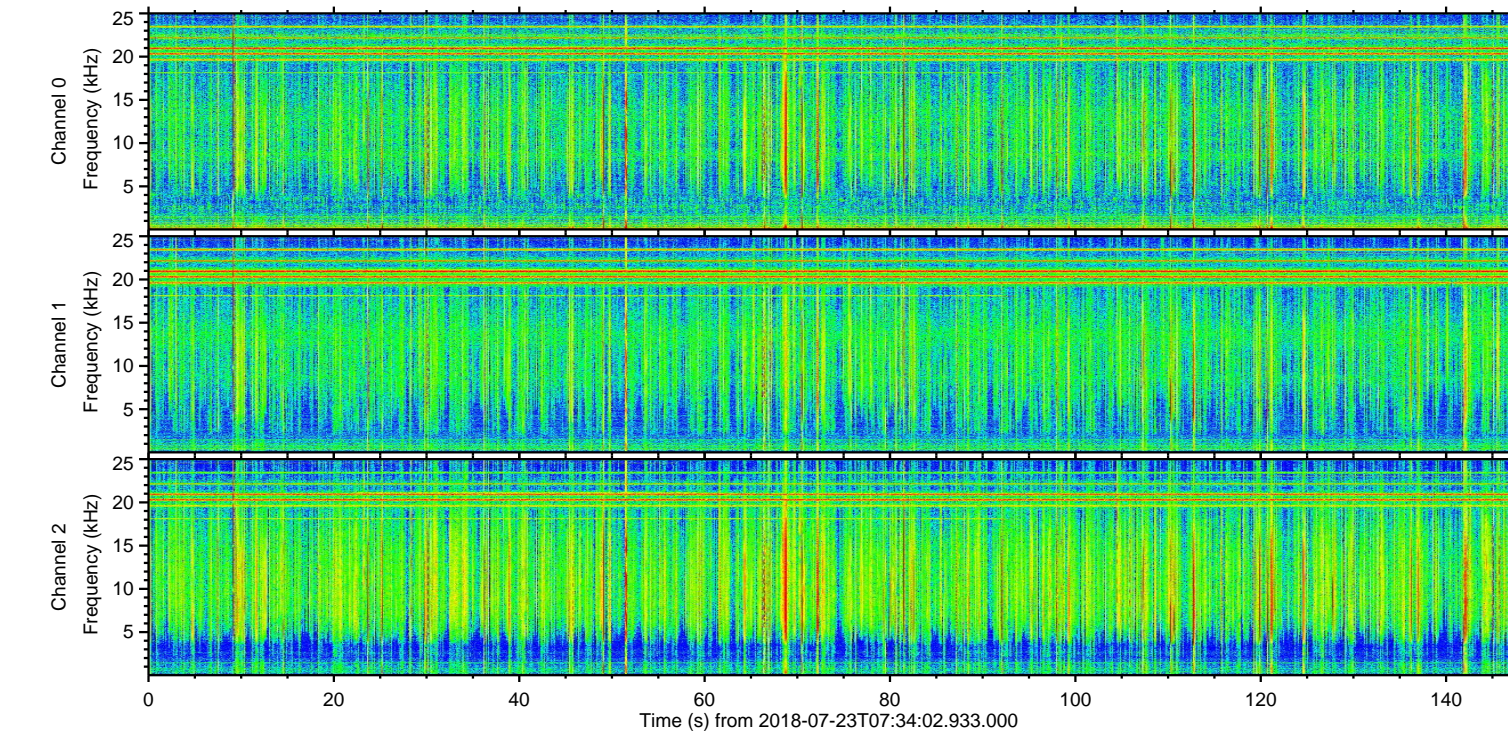
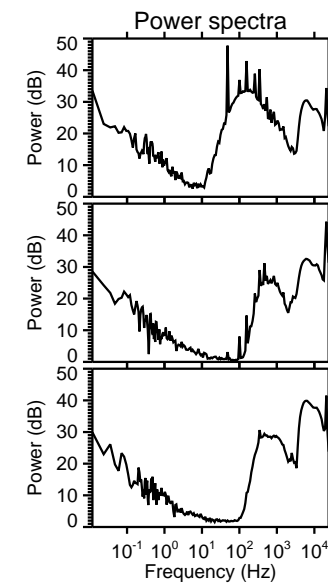
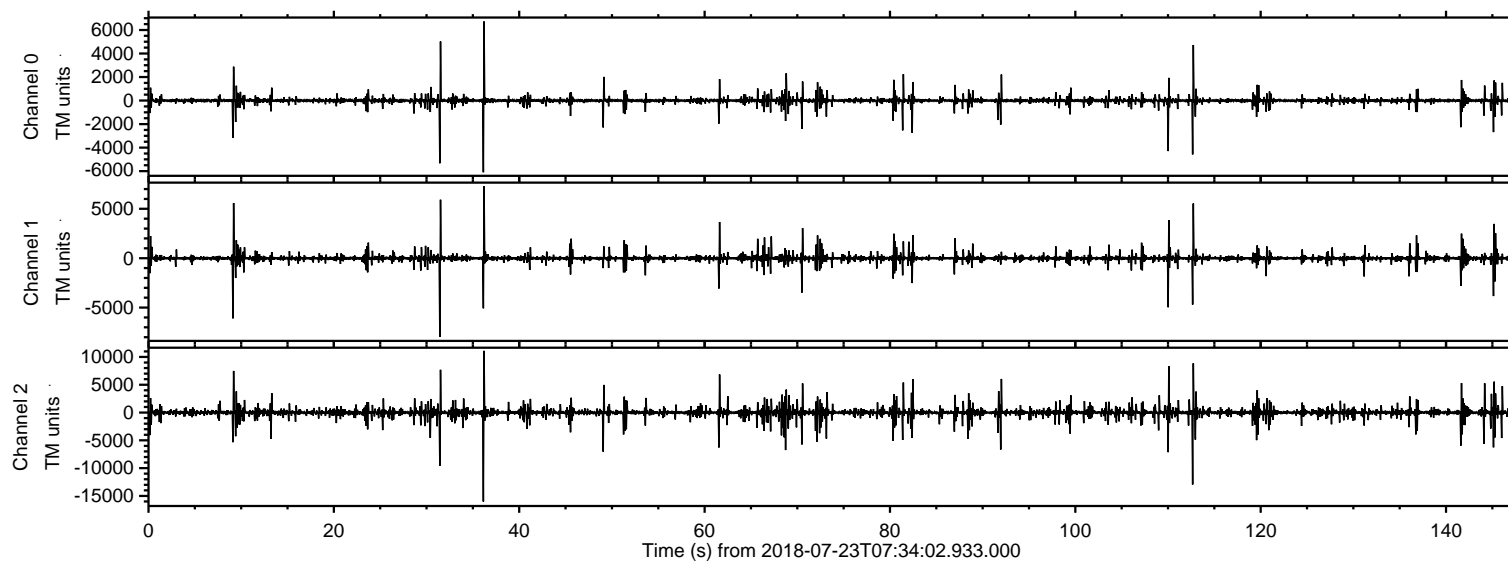
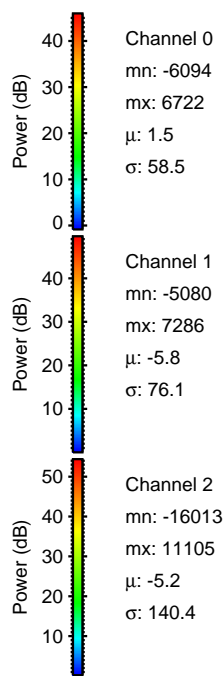
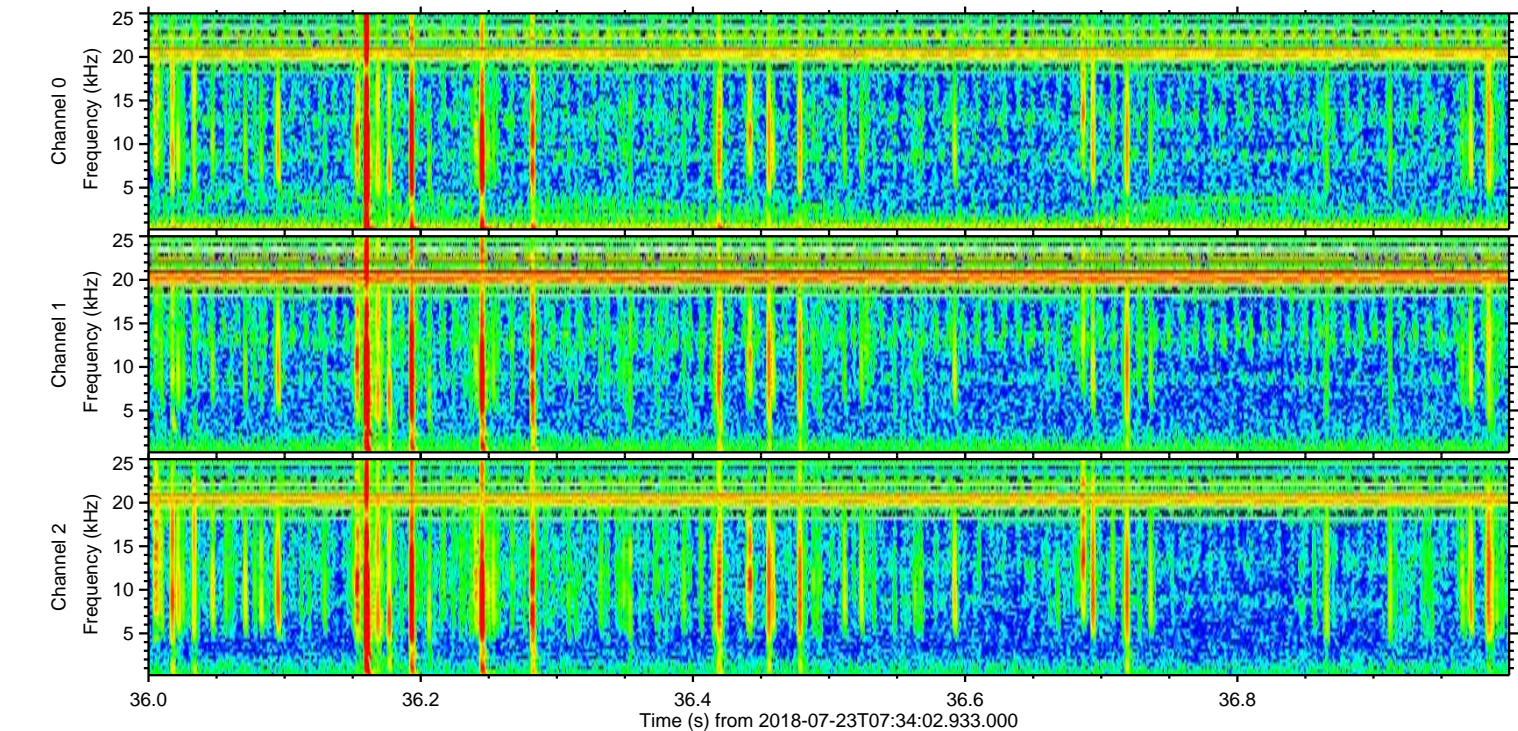
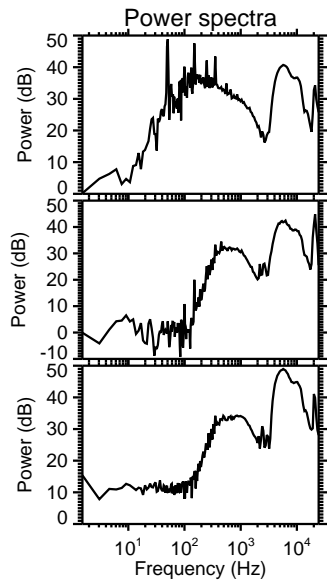
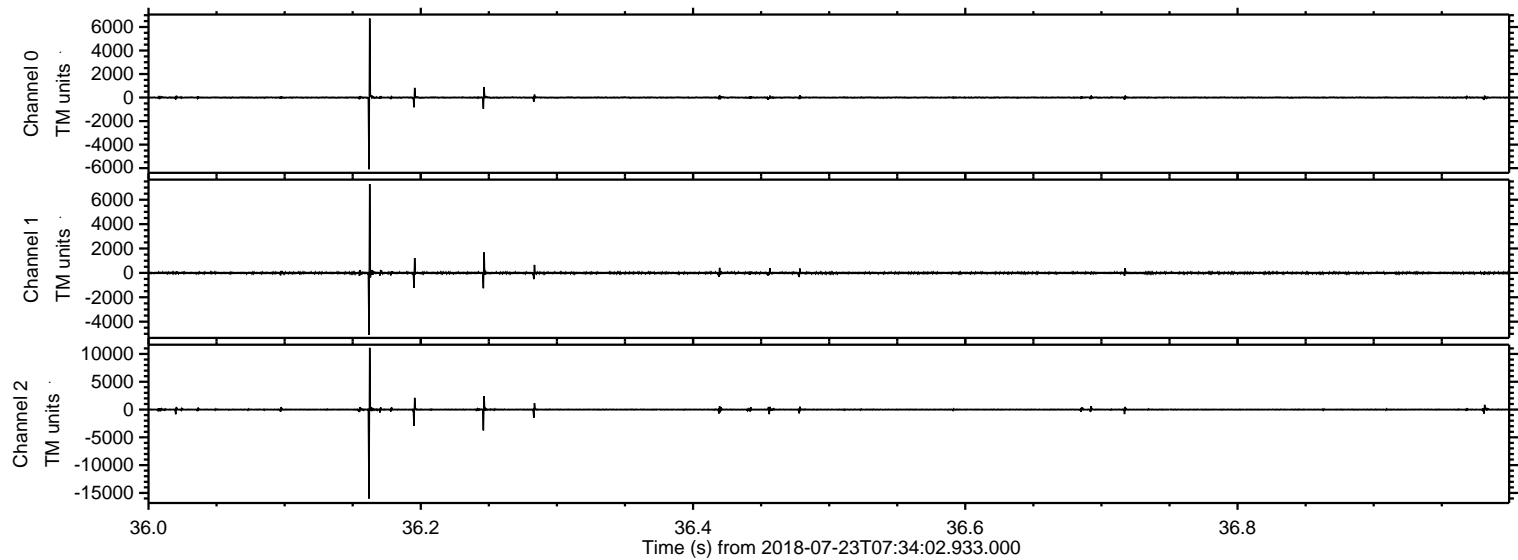


ELMAVAN 3D WAVEFORMS (Measured data sampled at 50 kHz) 51000 packets of 144 samples from 2018-07-23T07:34:02.933.000.

Processed Mon Jul 23 09:41:33 2018 by ELM ver.2012-10-06 from 001__elm20180723_073401__dat00.bin

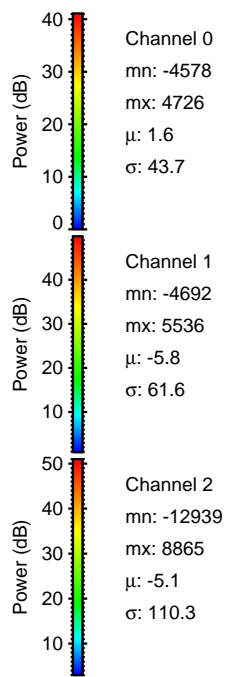
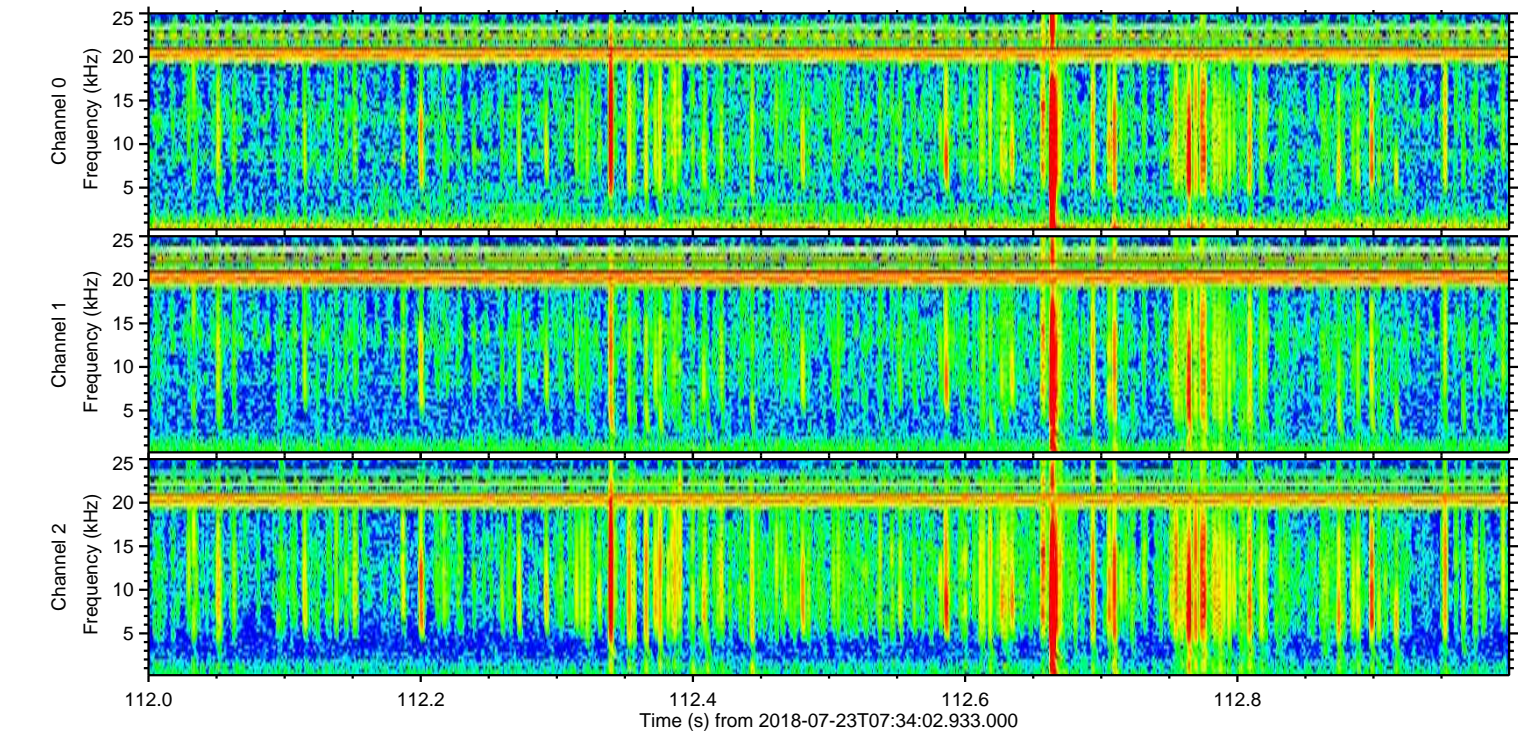
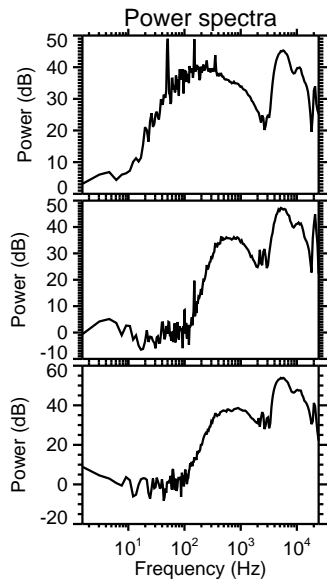
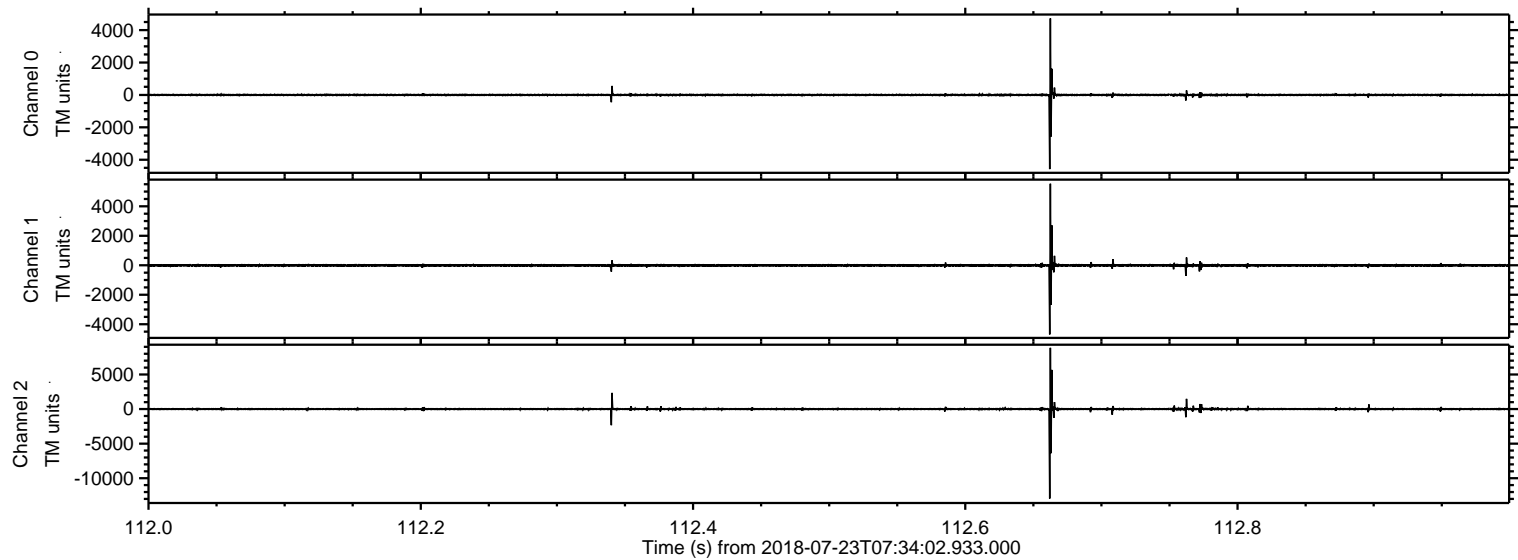


Processed Mon Jul 23 09:41:39 2018 by ELM ver.2012-10-06 from 001__elm20180723_073401__dat00.bin



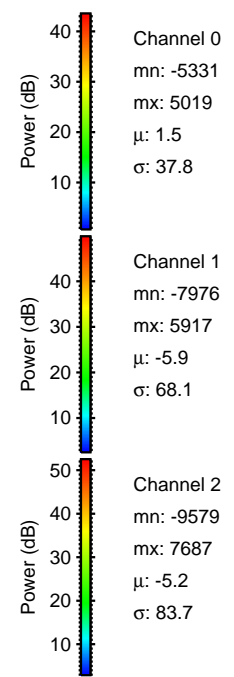
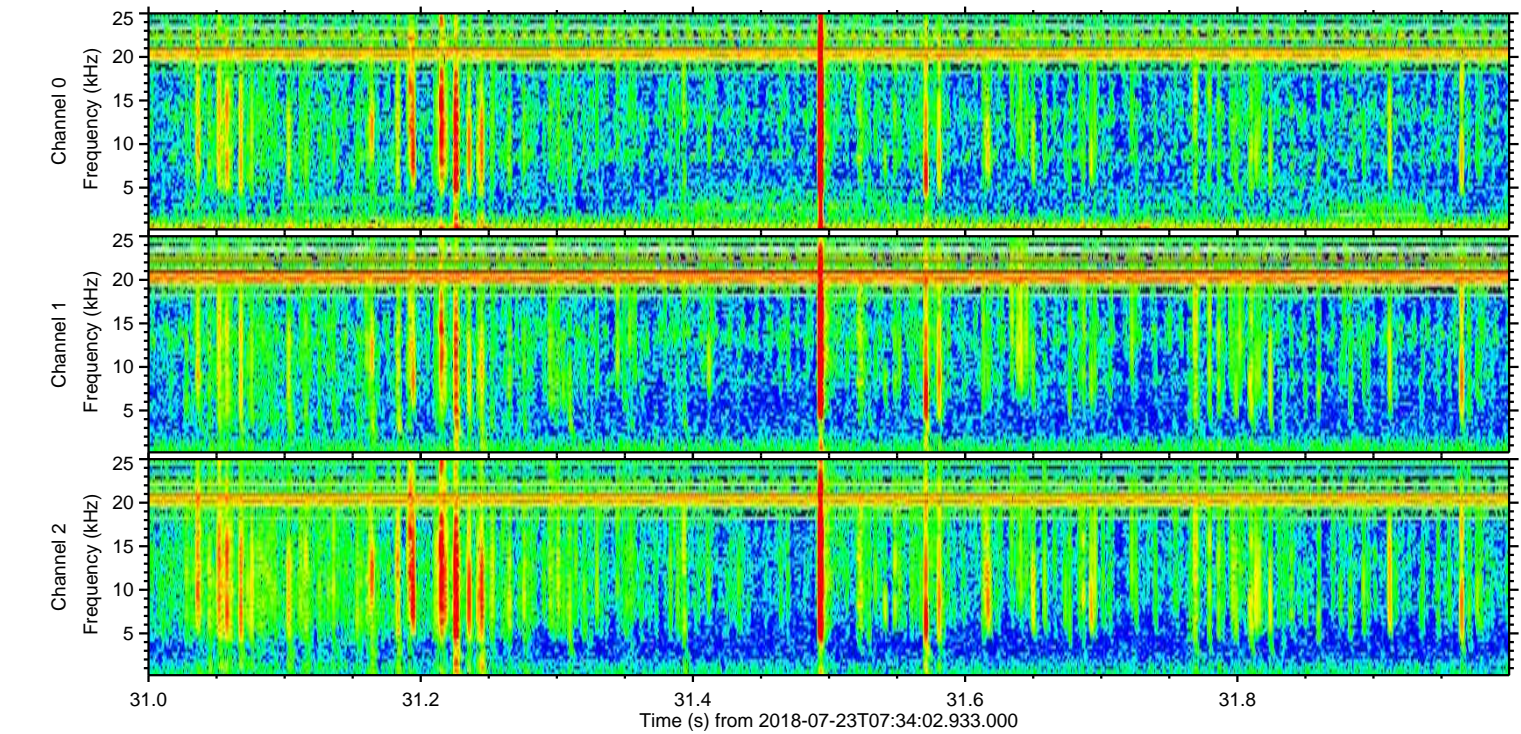
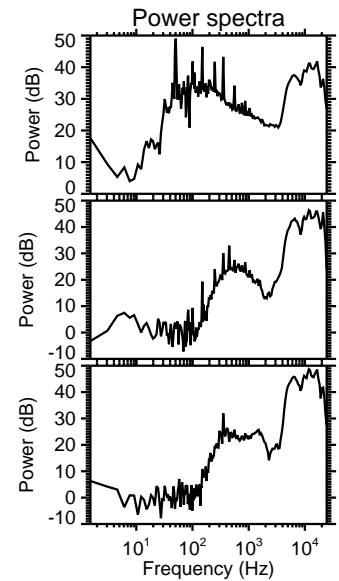
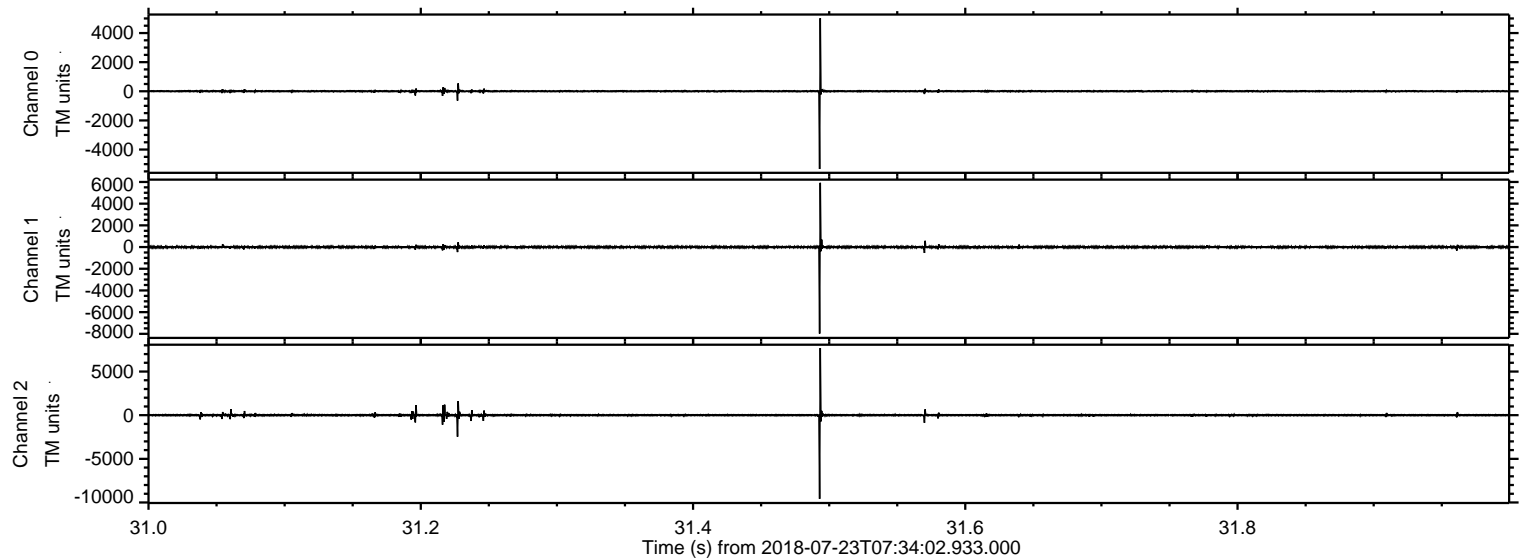
ELMAVAN 3D WAVEFORMS (Measured data sampled at 50 kHz) 51000 packets of 144 samples from 2018-07-23T07:34:02.933.000. Part 113/147

Processed Mon Jul 23 09:41:40 2018 by ELM ver.2012-10-06 from 001__elm20180723_073401__dat00.bin



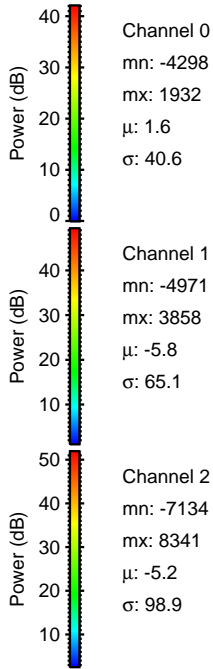
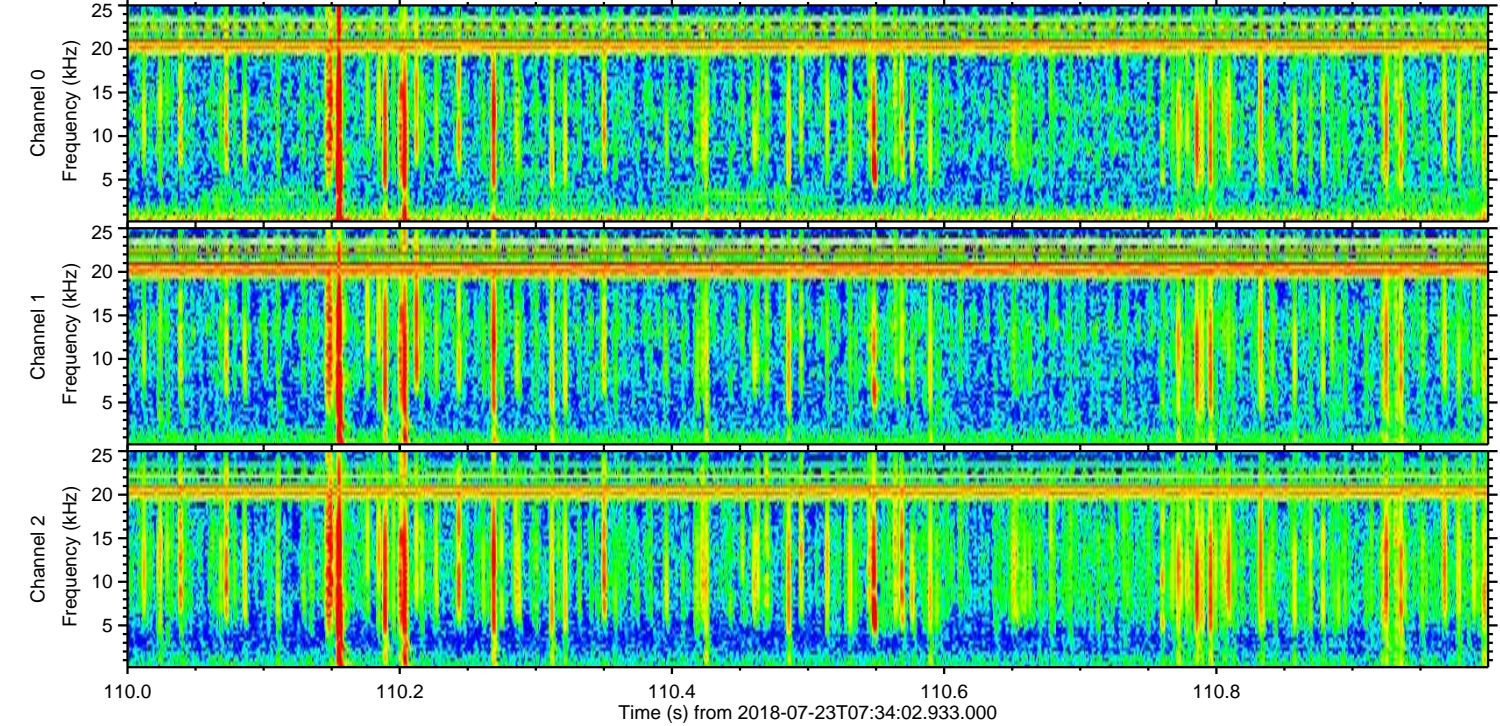
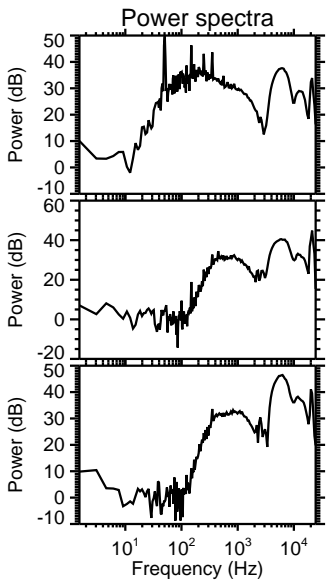
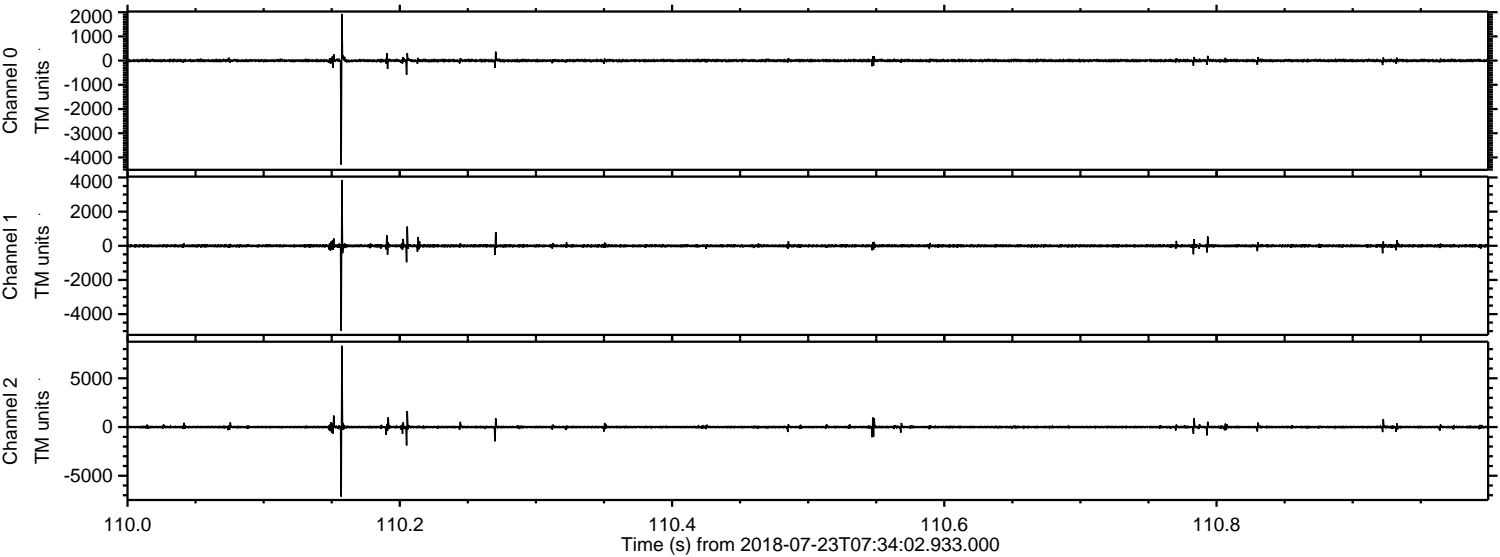
ELMAVAN 3D WAVEFORMS (Measured data sampled at 50 kHz) 51000 packets of 144 samples from 2018-07-23T07:34:02.933.000. Part 32/147

Processed Mon Jul 23 09:41:41 2018 by ELM ver.2012-10-06 from 001__elm20180723_073401__dat00.bin



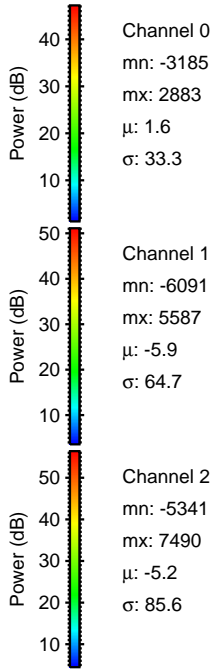
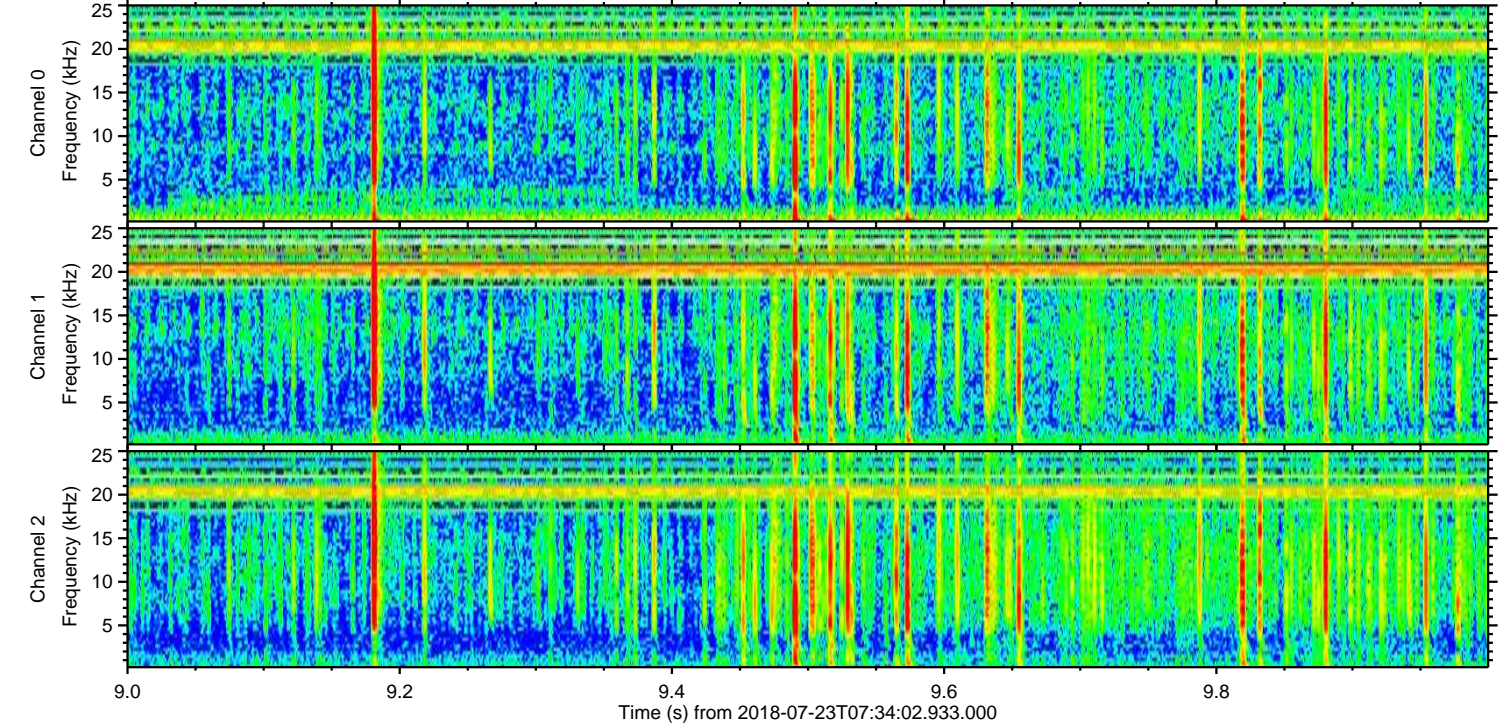
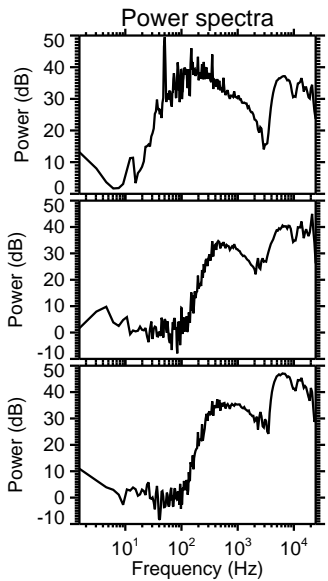
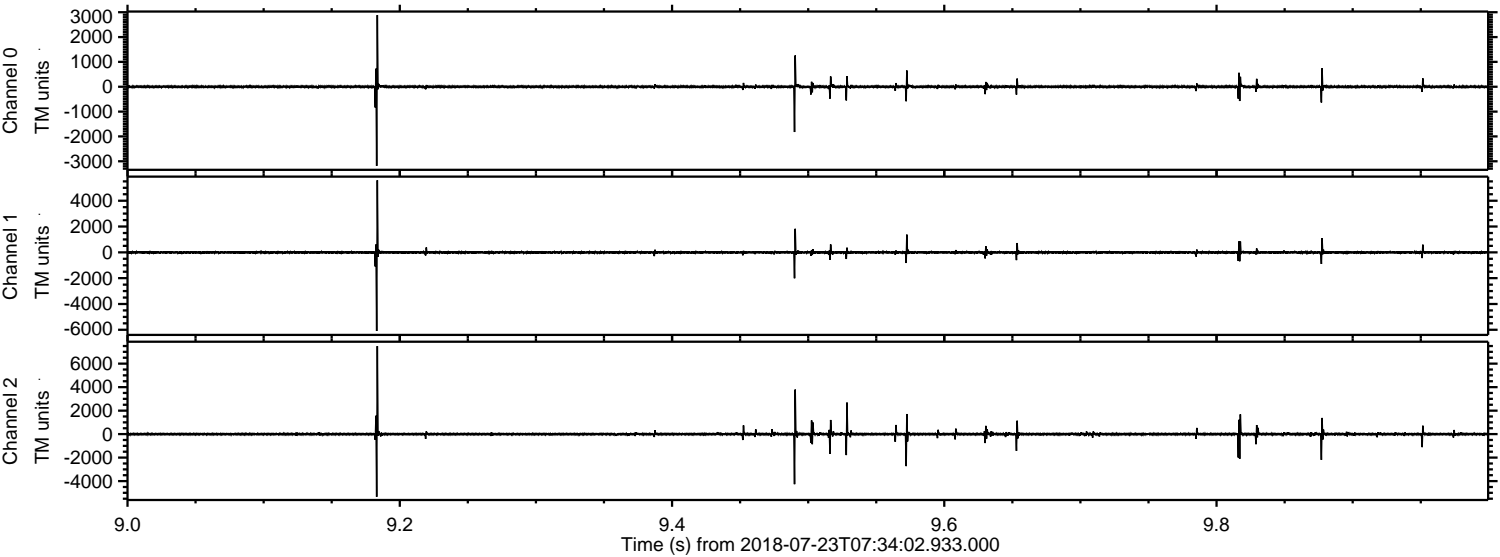
ELMAVAN 3D WAVEFORMS (Measured data sampled at 50 kHz) 51000 packets of 144 samples from 2018-07-23T07:34:02.933.000. Part 111/147

Processed Mon Jul 23 09:41:41 2018 by ELM ver.2012-10-06 from 001__elm20180723_073401__dat00.bin

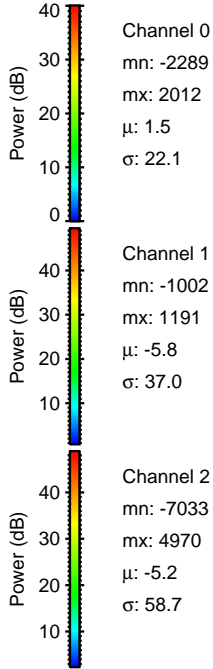
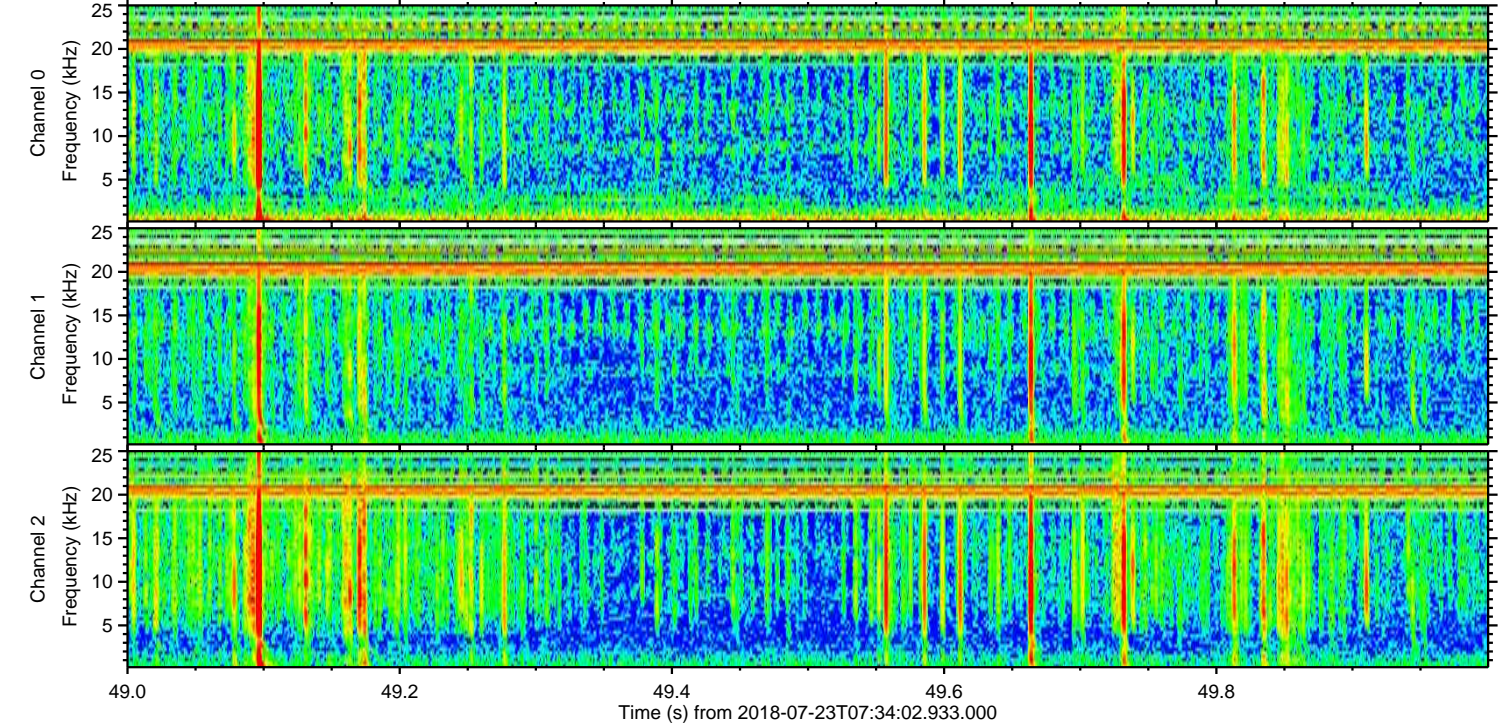
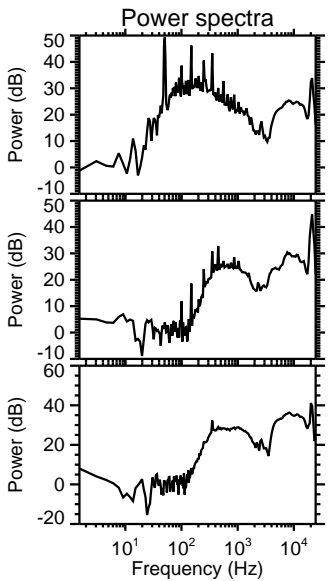
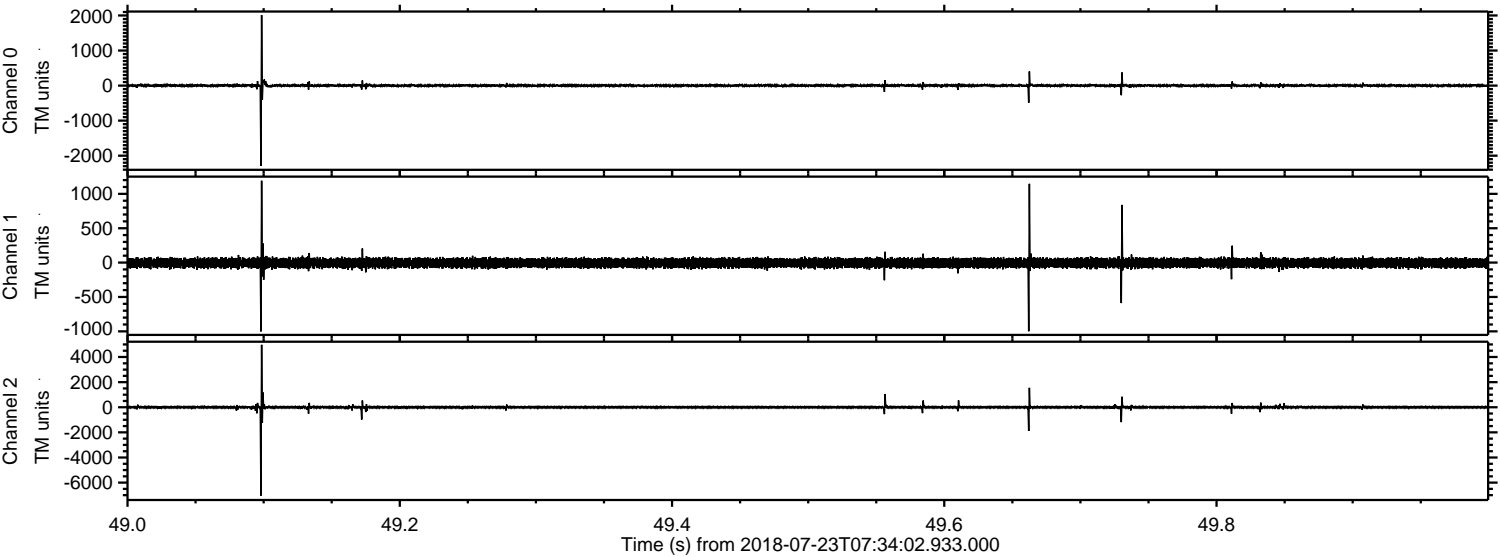


ELMAVAN 3D WAVEFORMS (Measured data sampled at 50 kHz) 51000 packets of 144 samples from 2018-07-23T07:34:02.933.000. Part 10/147

Processed Mon Jul 23 09:41:42 2018 by ELM ver.2012-10-06 from 001__elm20180723_073401__dat00.bin



Processed Mon Jul 23 09:41:43 2018 by ELM ver.2012-10-06 from 001__elm20180723_073401__dat00.bin

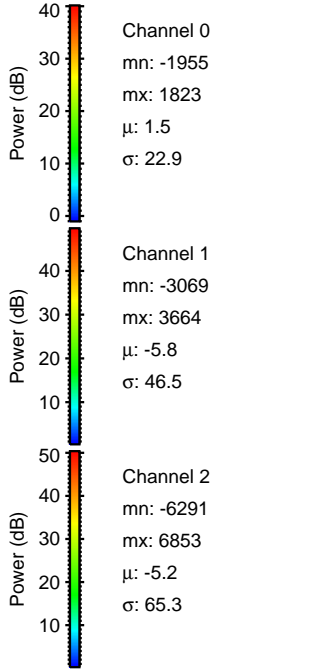
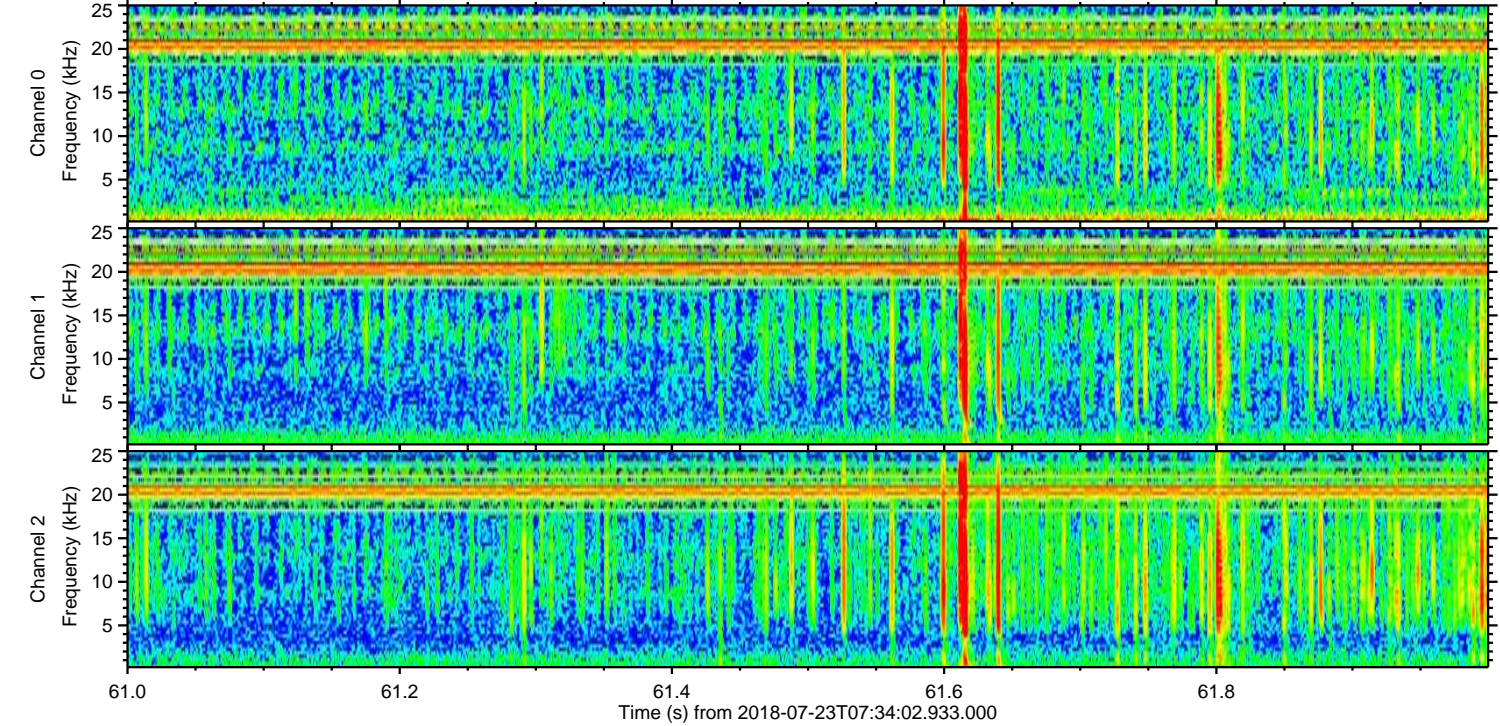
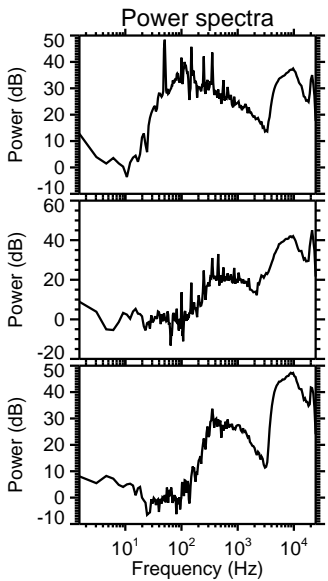
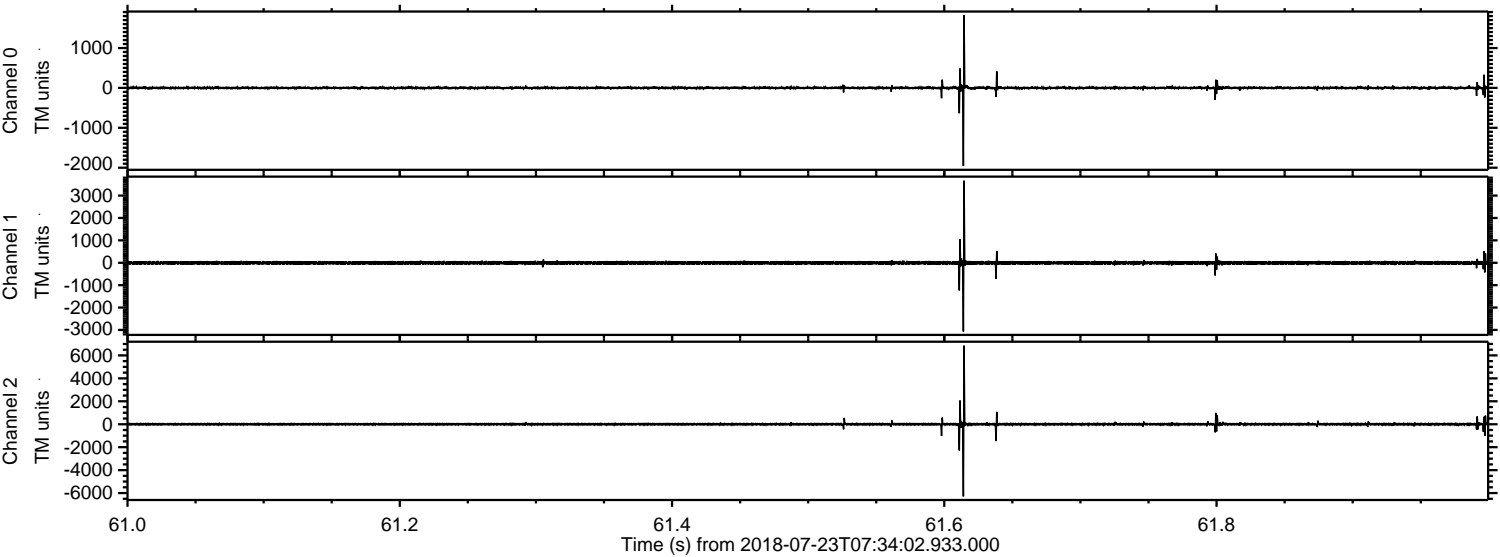


Channel 0
mn: -2289
mx: 2012
 μ : 1.5
 σ : 22.1

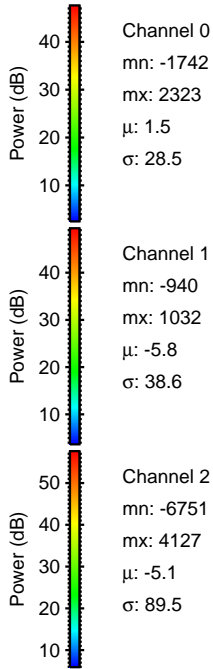
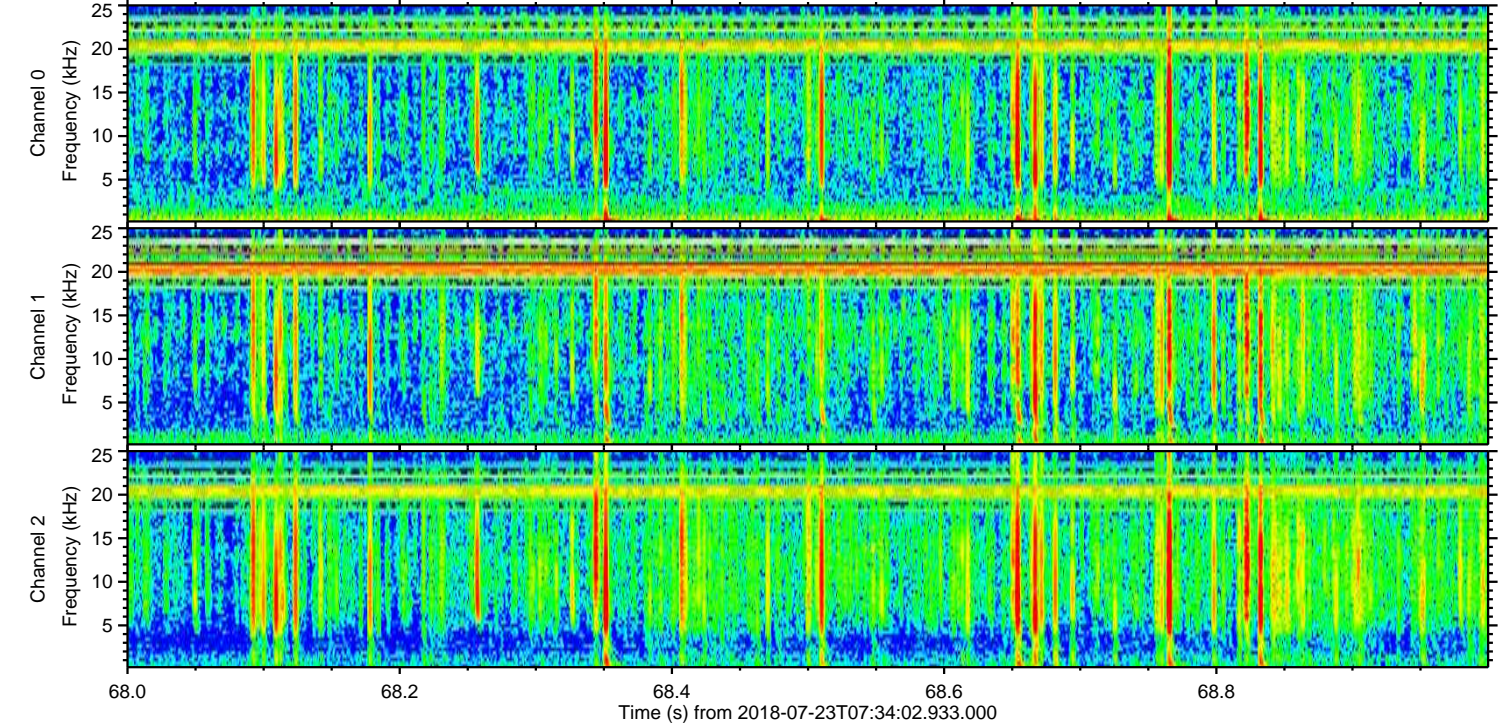
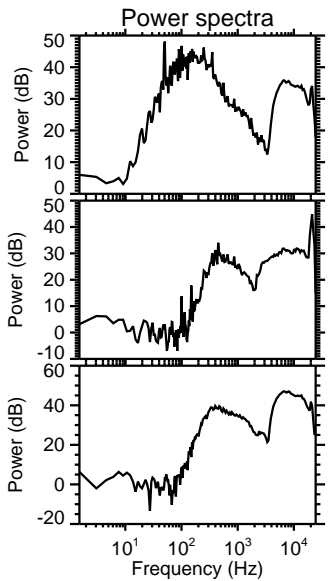
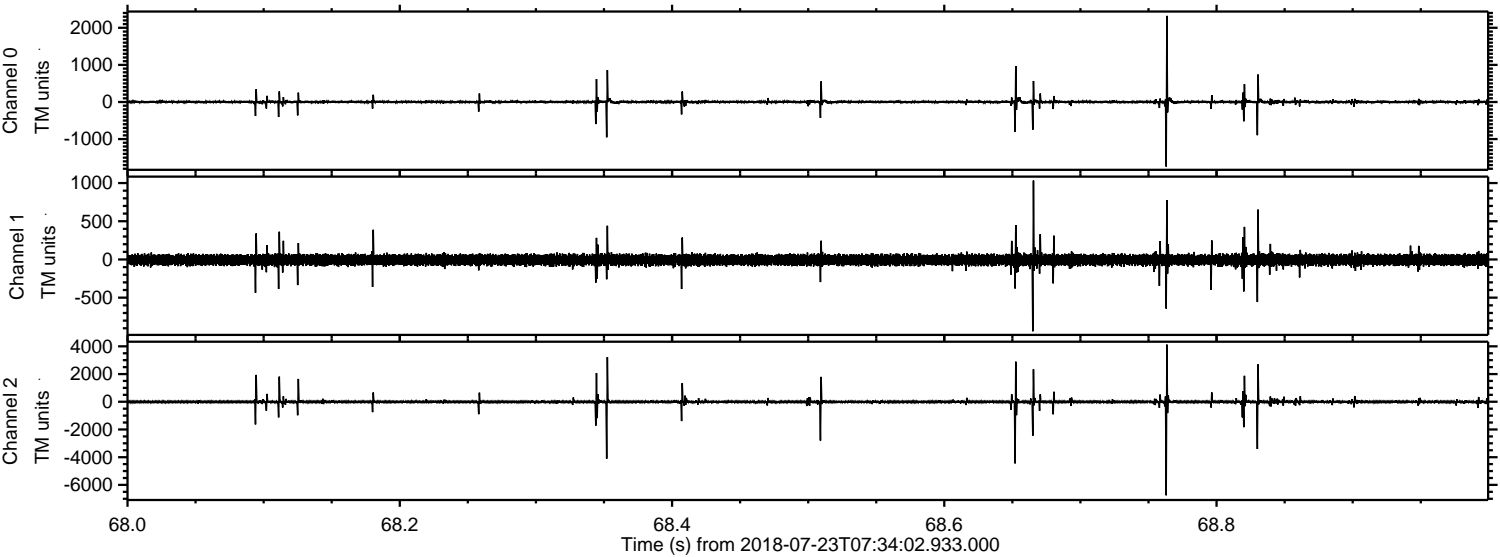
Channel 1
mn: -1002
mx: 1191
 μ : -5.8
 σ : 37.0

Channel 2
mn: -7033
mx: 4970
 μ : -5.2
 σ : 58.7

Processed Mon Jul 23 09:41:43 2018 by ELM ver.2012-10-06 from 001__elm20180723_073401__dat00.bin



Processed Mon Jul 23 09:41:44 2018 by ELM ver.2012-10-06 from 001__elm20180723_073401__dat00.bin

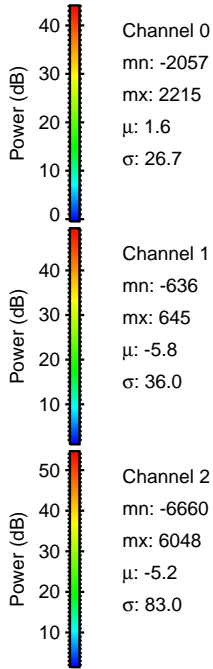
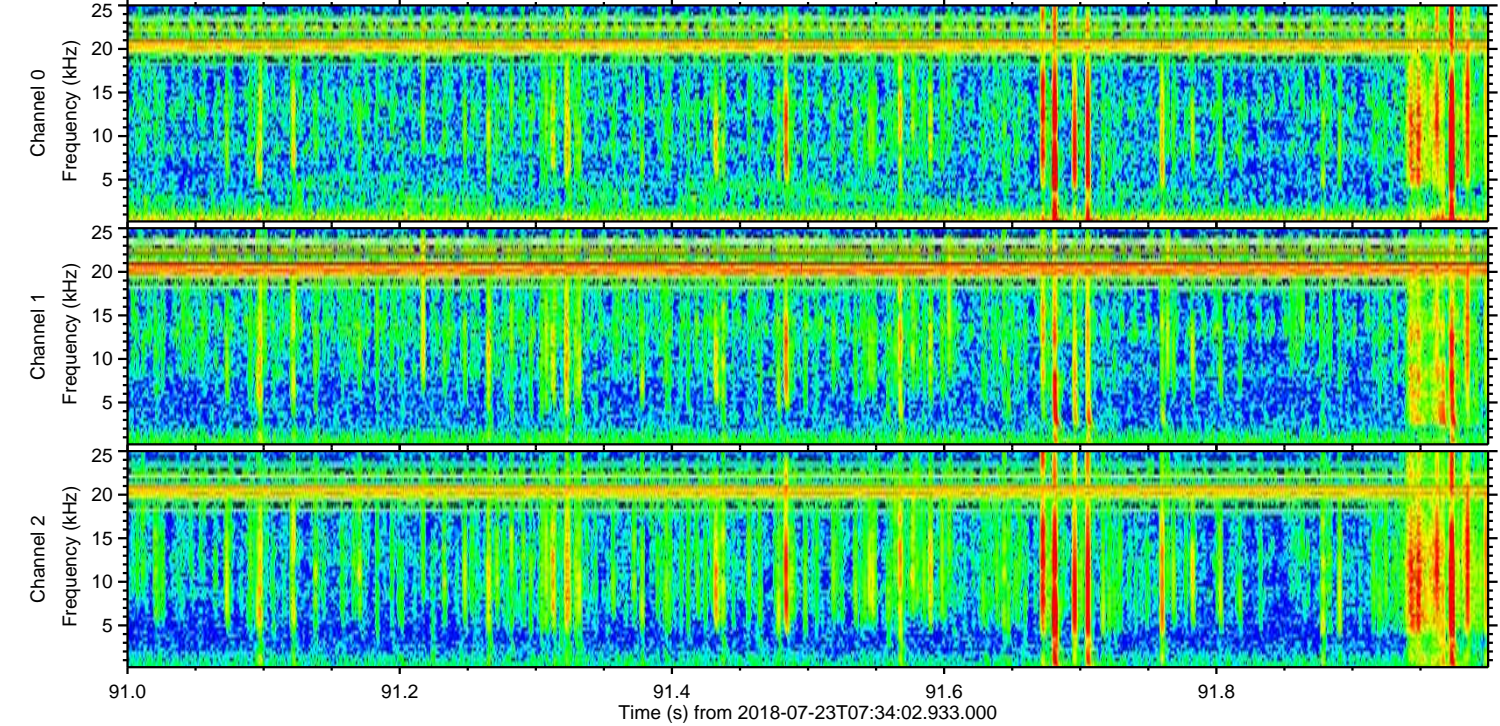
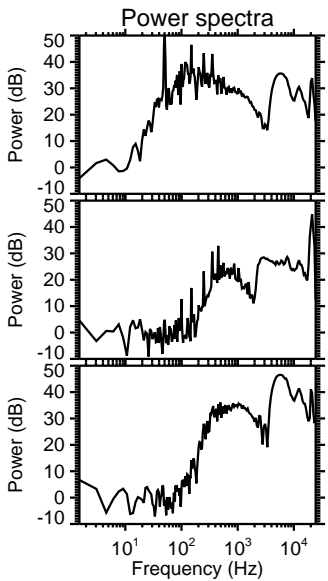
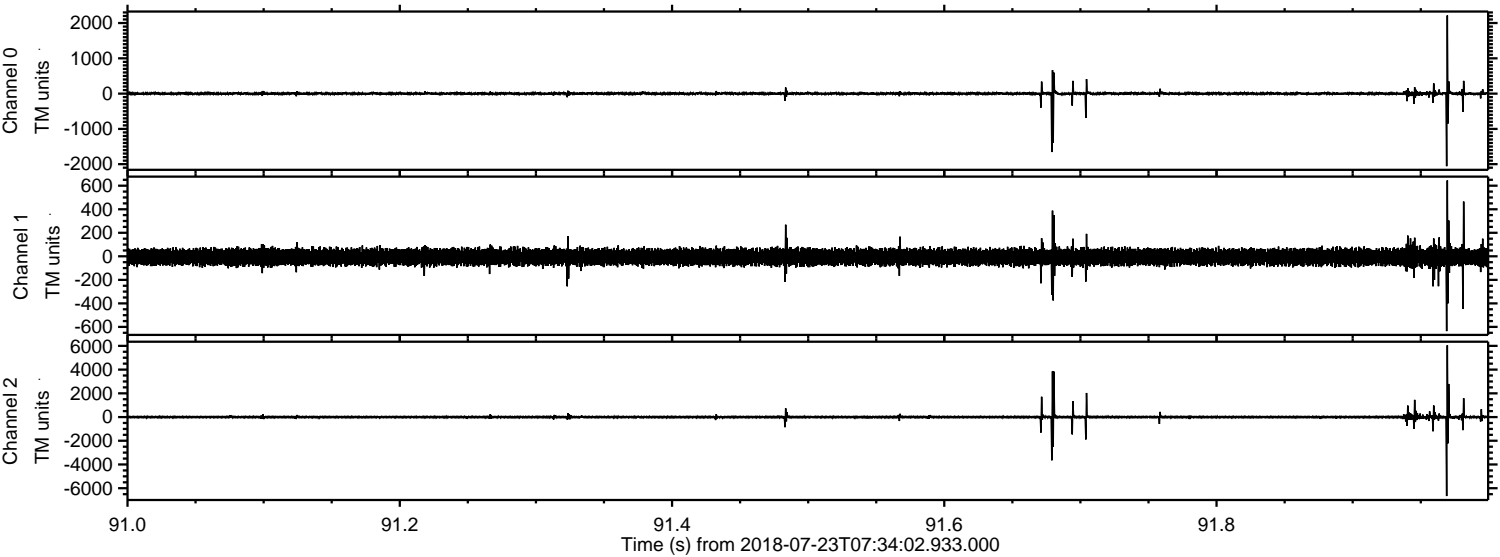


Channel 0
mn: -1742
mx: 2323
 μ : 1.5
 σ : 28.5

Channel 1
mn: -940
mx: 1032
 μ : -5.8
 σ : 38.6

Channel 2
mn: -6751
mx: 4127
 μ : -5.1
 σ : 89.5

Processed Mon Jul 23 09:41:45 2018 by ELM ver.2012-10-06 from 001__elm20180723_073401__dat00.bin



Channel 0
mn: -2057
mx: 2215
 μ : 1.6
 σ : 26.7

Channel 1
mn: -636
mx: 645
 μ : -5.8
 σ : 36.0

Channel 2
mn: -6660
mx: 6048
 μ : -5.2
 σ : 83.0

Processed Mon Jul 23 09:41:45 2018 by ELM ver.2012-10-06 from 001__elm20180723_073401__dat00.bin

