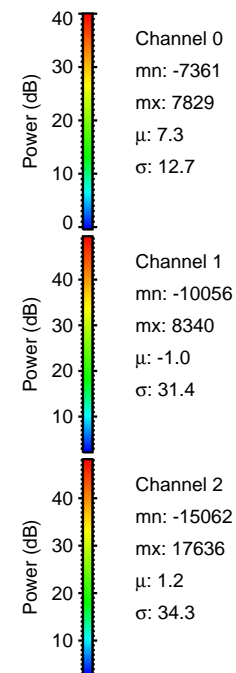
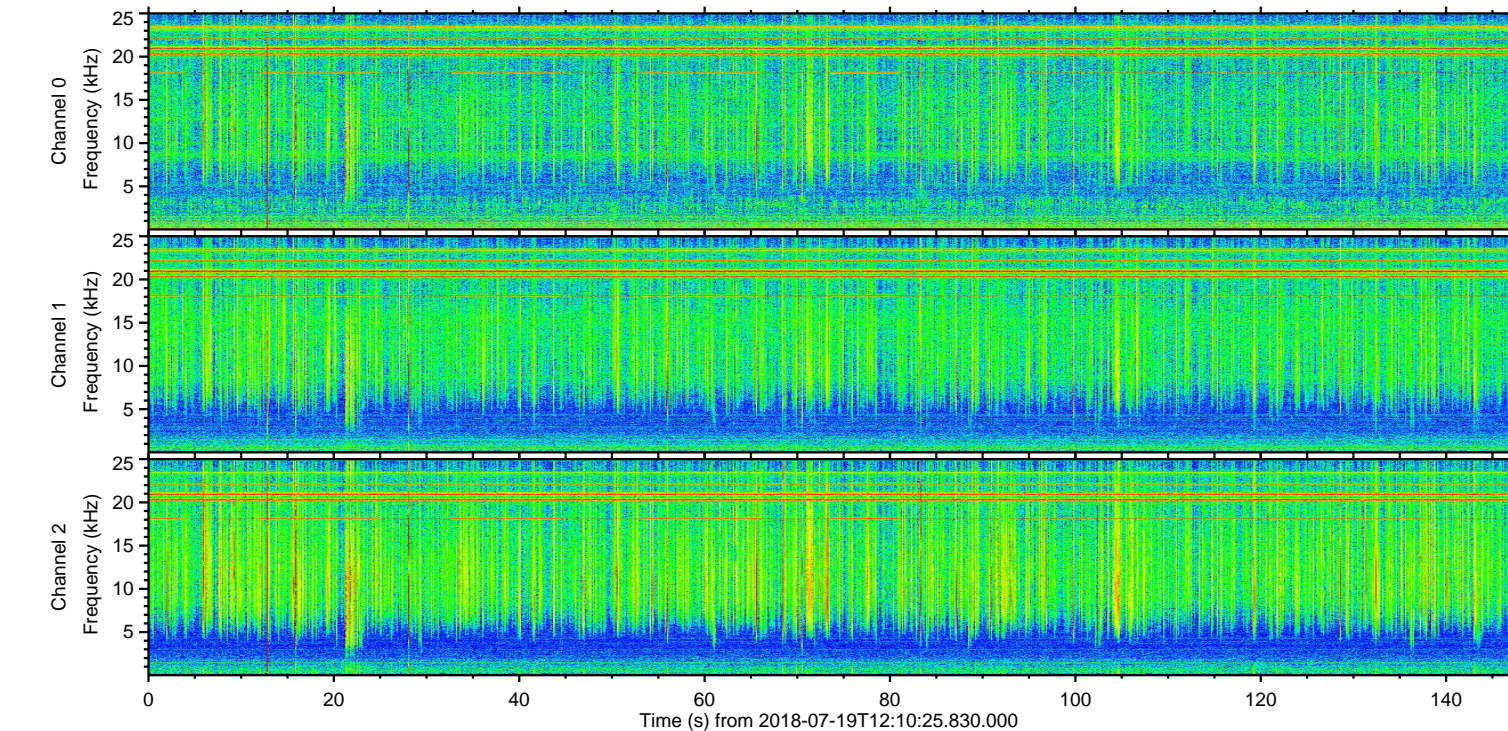
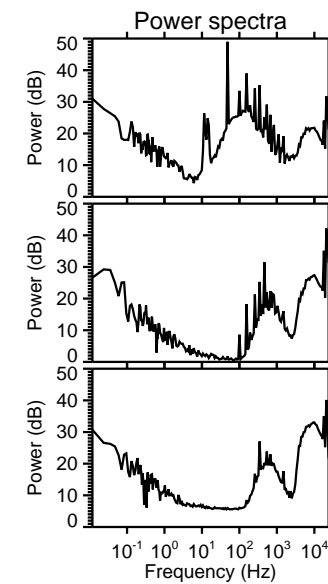
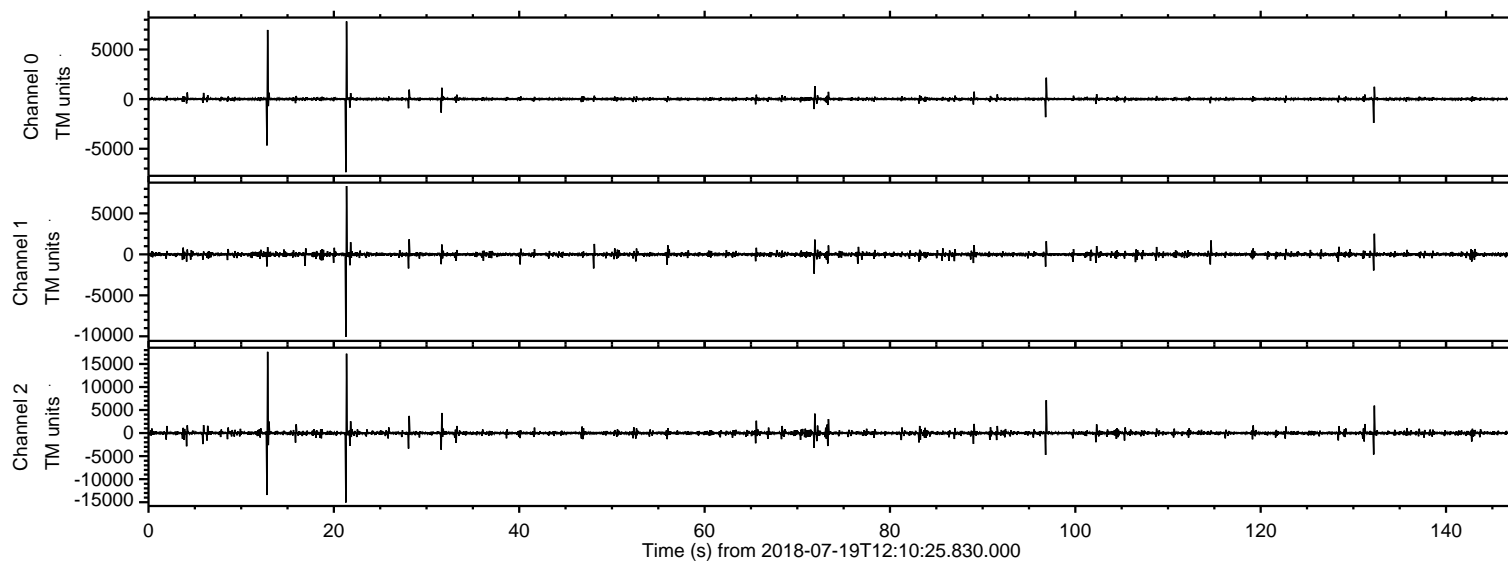


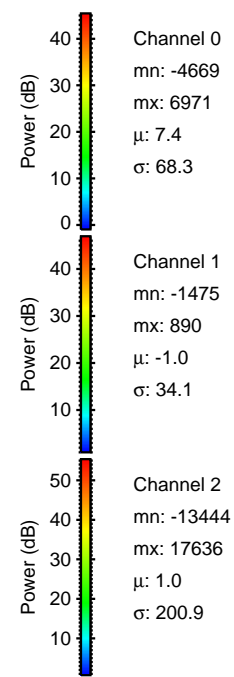
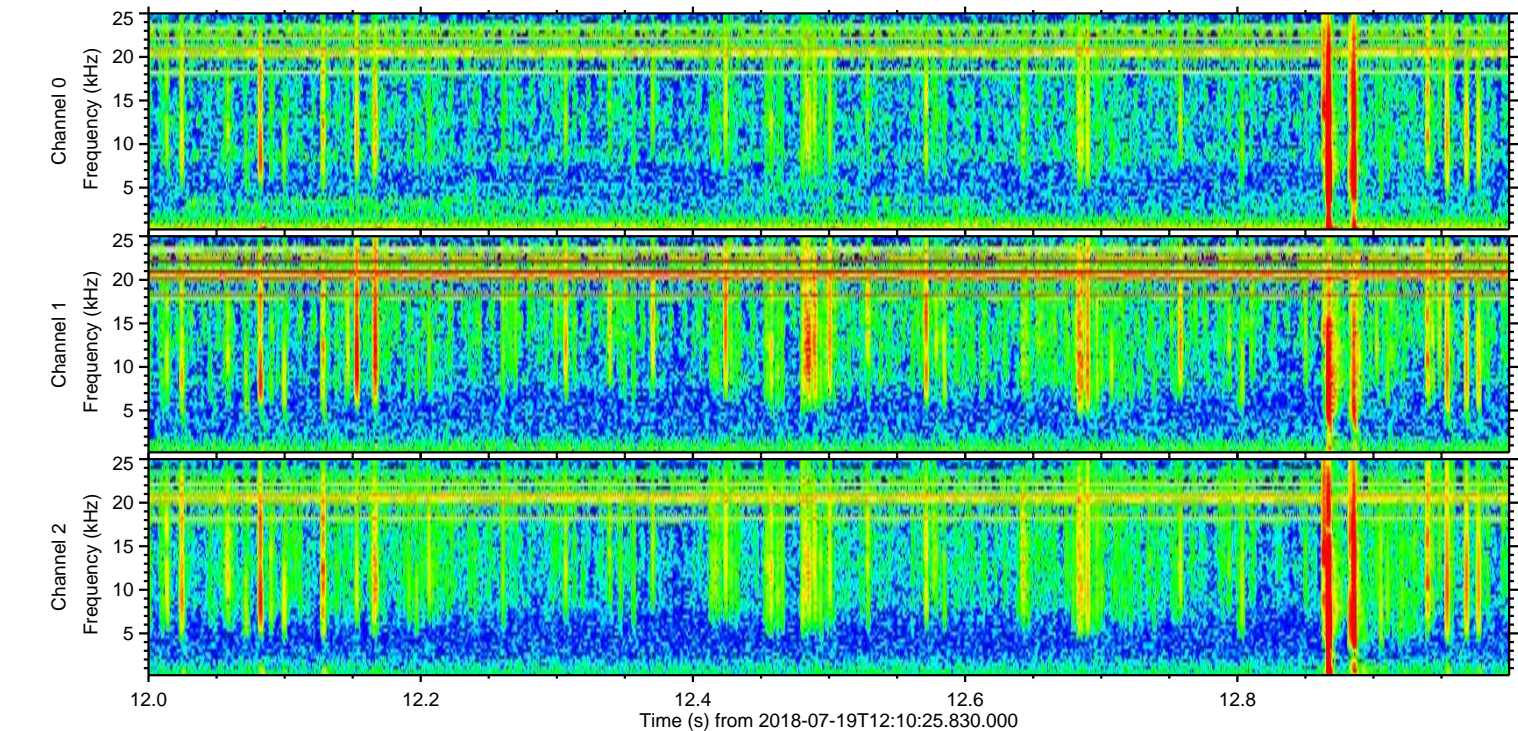
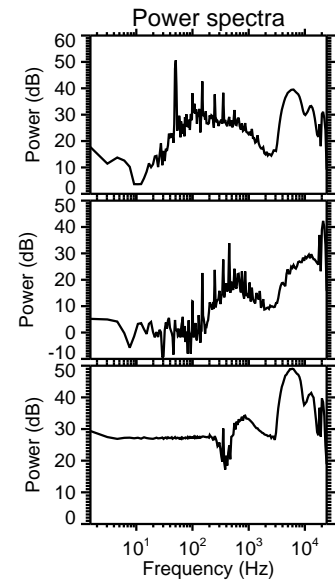
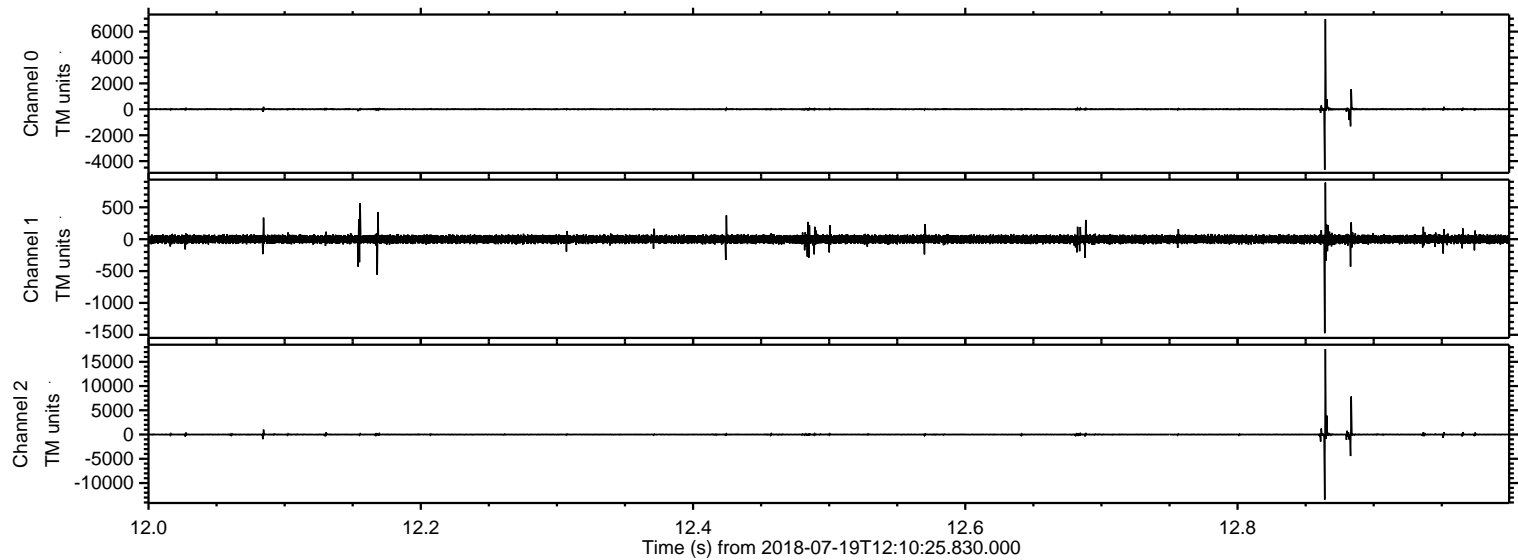
ELMAVAN 3D WAVEFORMS (Measured data sampled at 50 kHz) 51000 packets of 144 samples from 2018-07-19T12:10:25.830.000.

Processed Thu Jul 19 14:18:26 2018 by ELM ver.2012-10-06 from 001__elm20180719_121024__dat00.bin

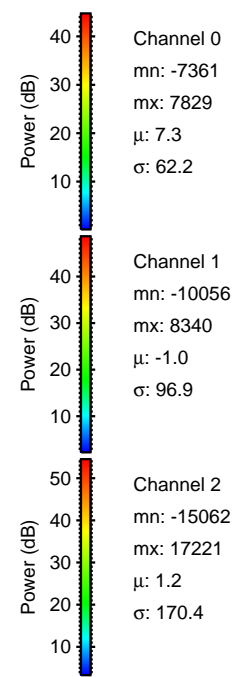
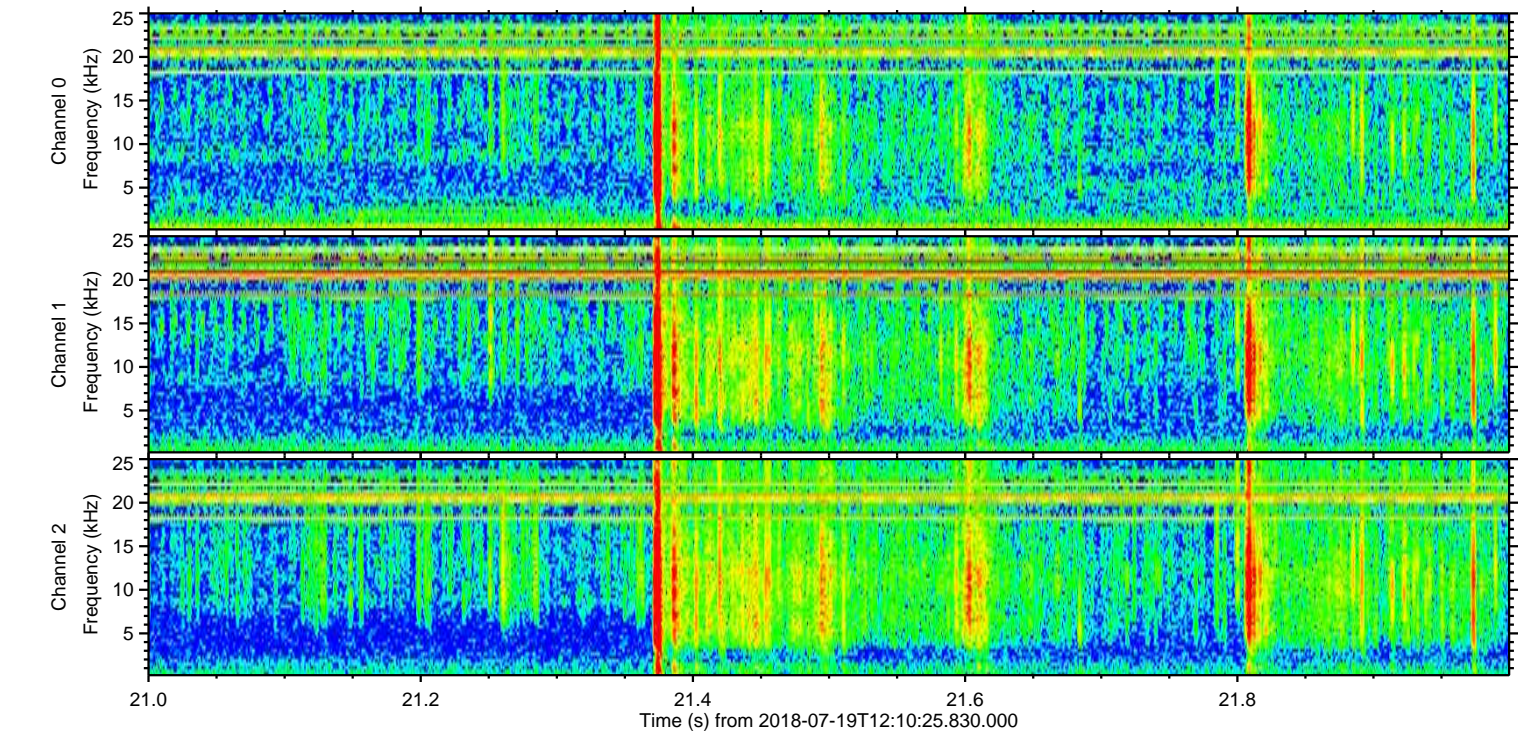
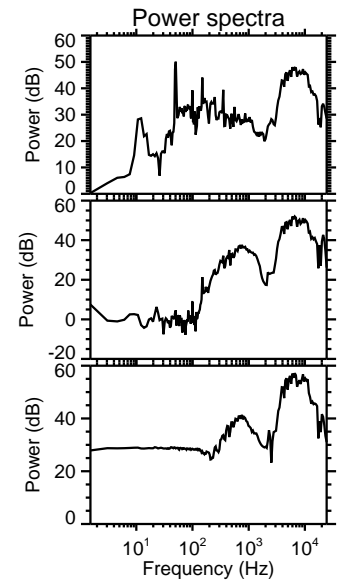
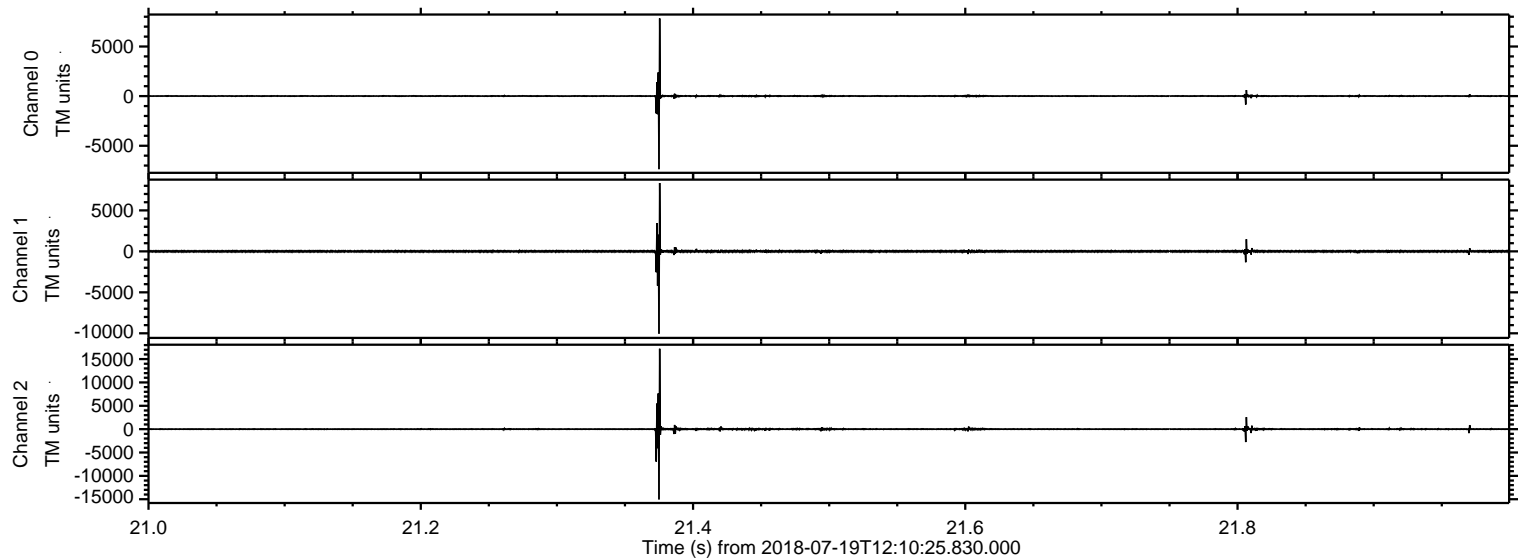


ELMAVAN 3D WAVEFORMS (Measured data sampled at 50 kHz) 51000 packets of 144 samples from 2018-07-19T12:10:25.830.000. Part 13/147

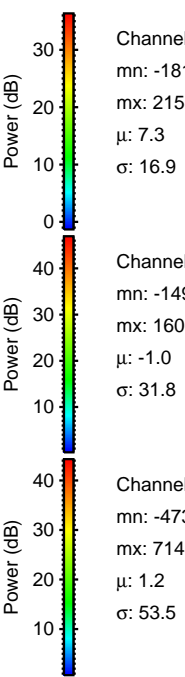
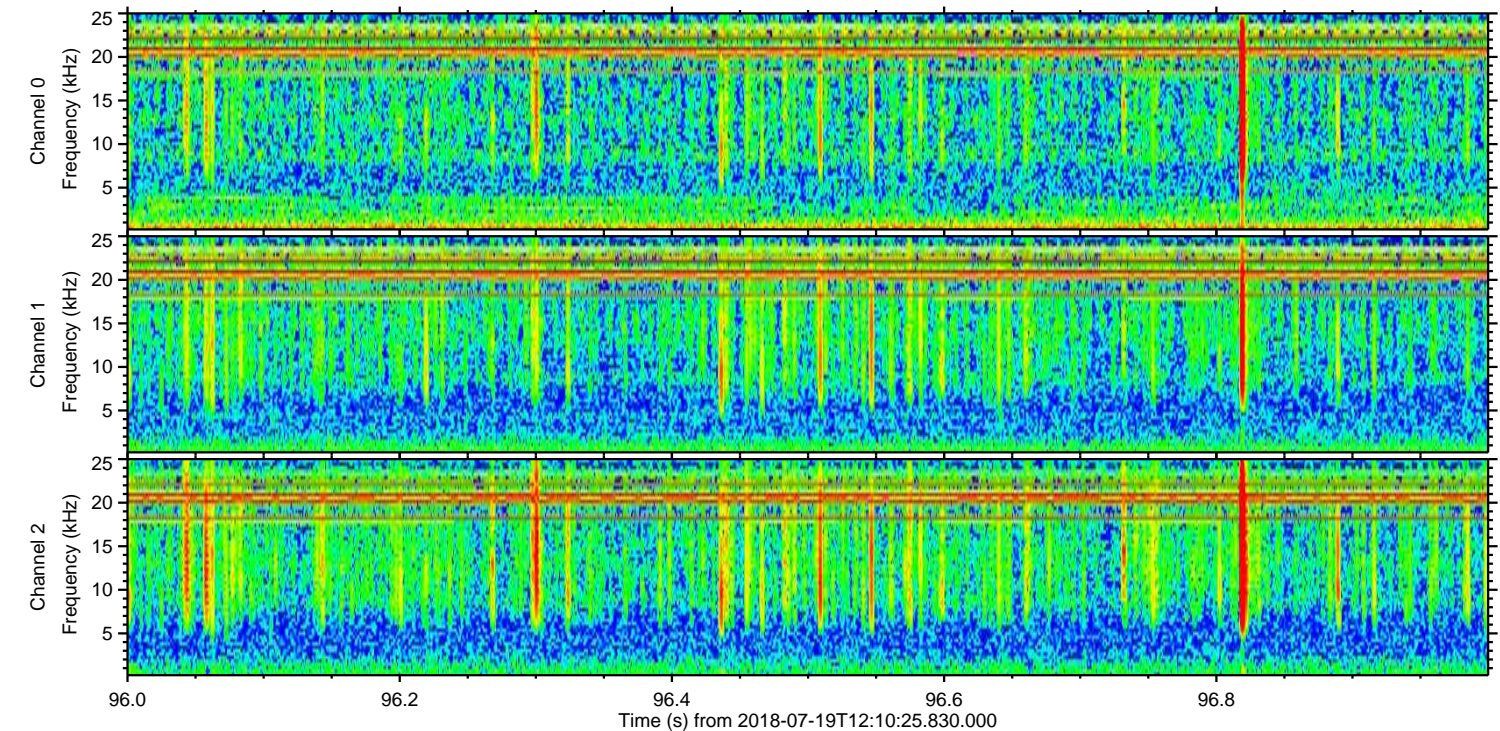
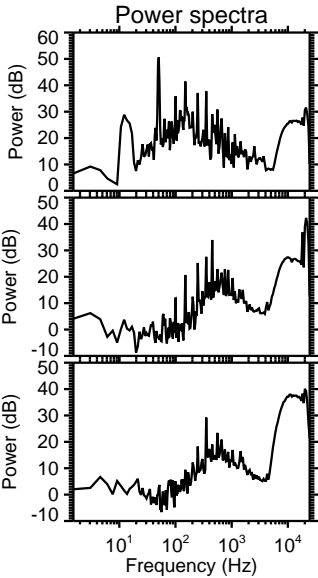
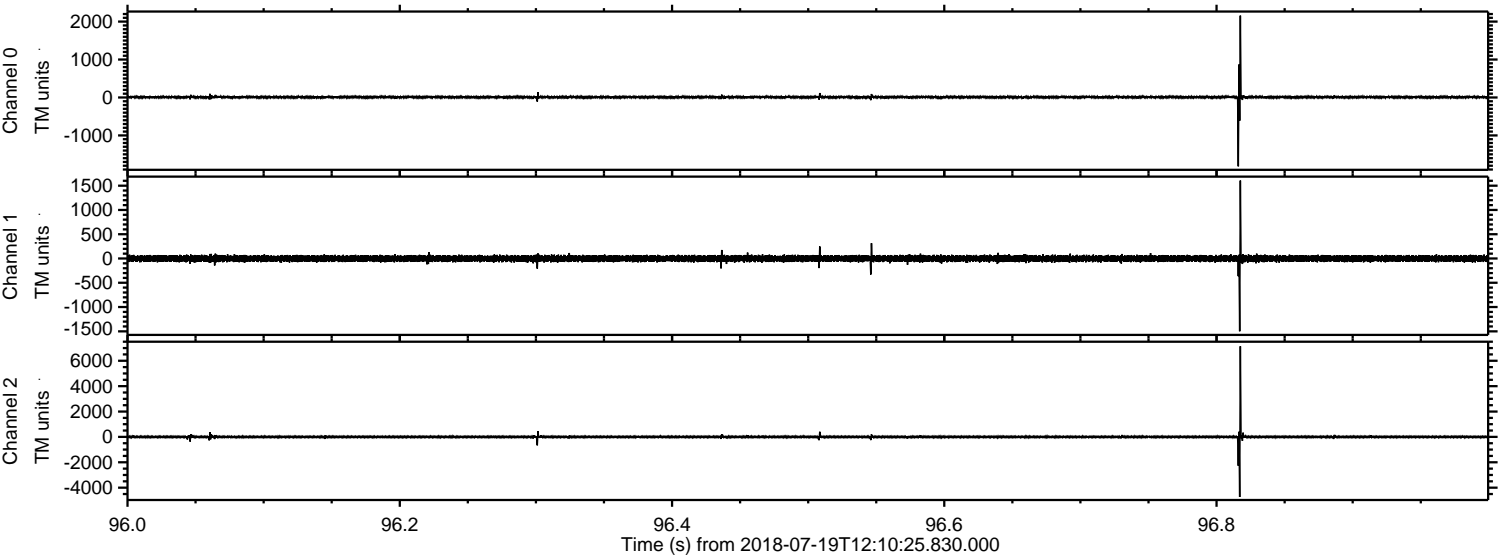
Processed Thu Jul 19 14:18:32 2018 by ELM ver.2012-10-06 from 001__elm20180719_121024__dat00.bin



Processed Thu Jul 19 14:18:33 2018 by ELM ver.2012-10-06 from 001__elm20180719_121024__dat00.bin



Processed Thu Jul 19 14:18:33 2018 by ELM ver.2012-10-06 from 001__elm20180719_121024__dat00.bin



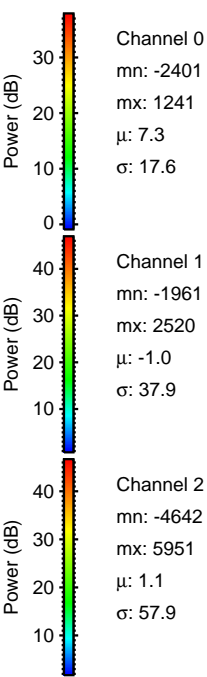
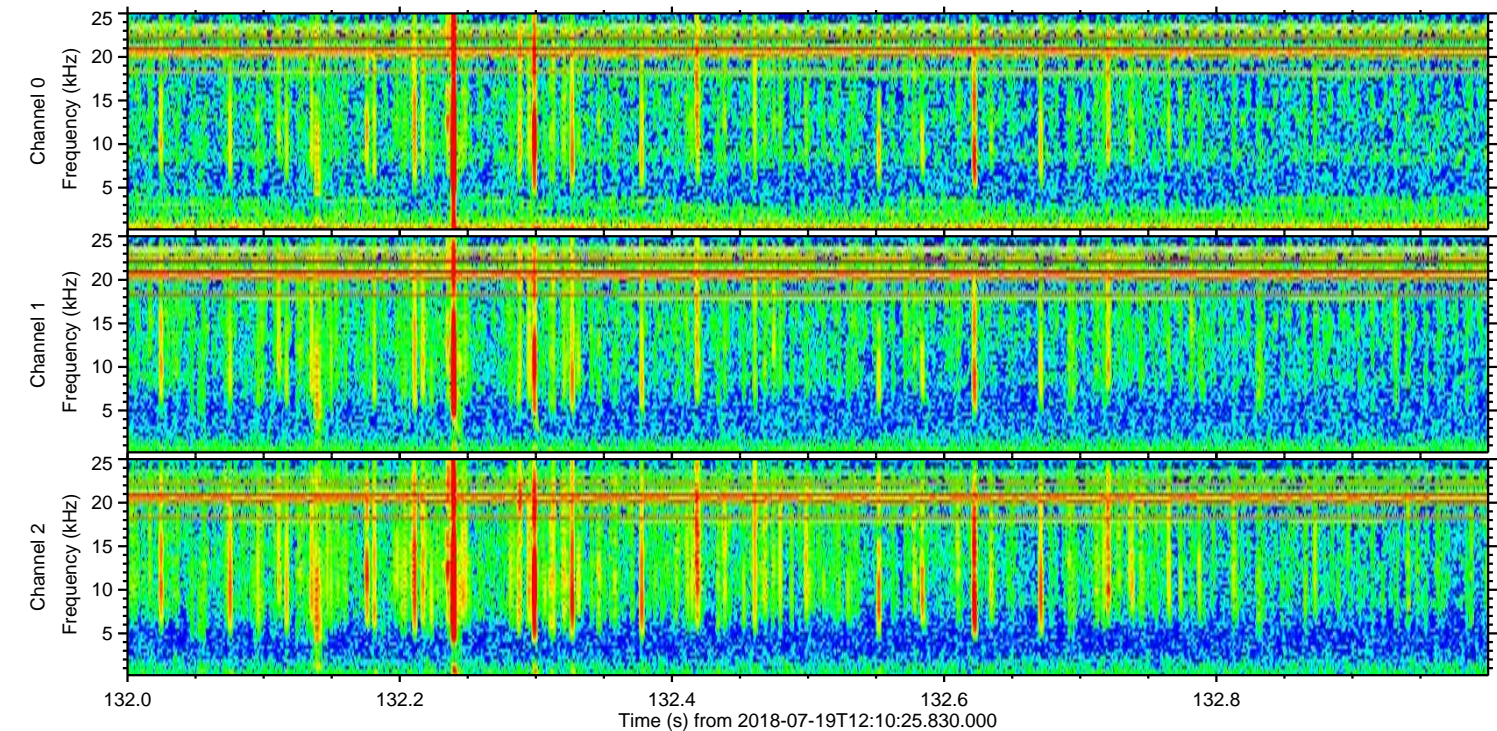
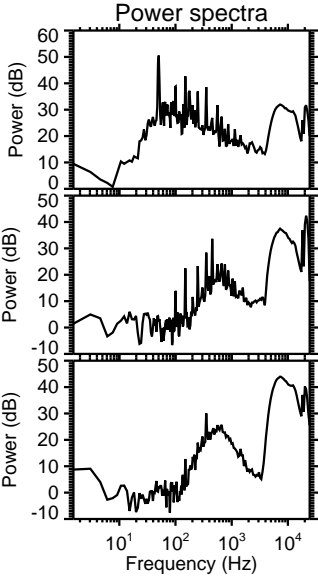
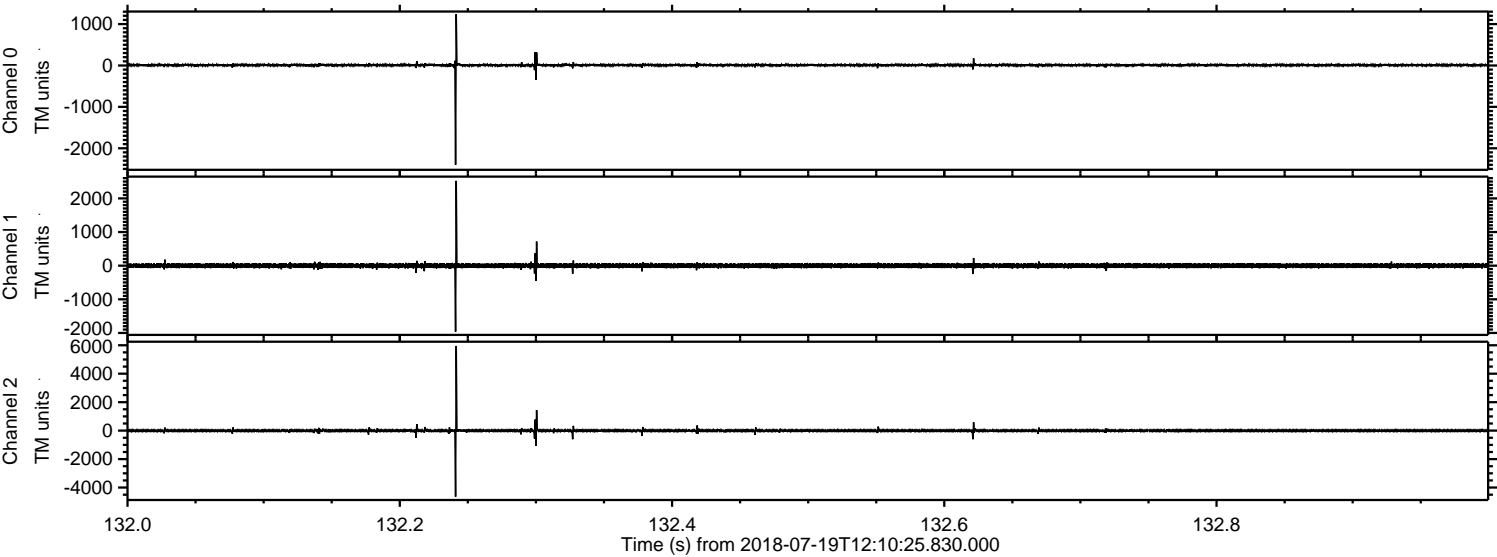
Channel 0
mn: -1817
mx: 2158
 μ : 7.3
 σ : 16.9

Channel 1
mn: -1499
mx: 1606
 μ : -1.0
 σ : 31.8

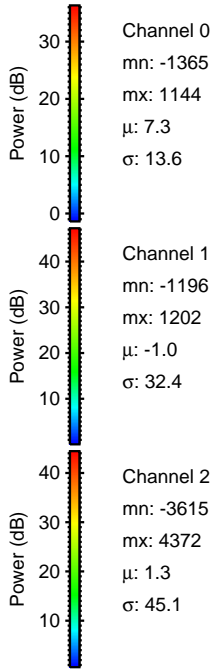
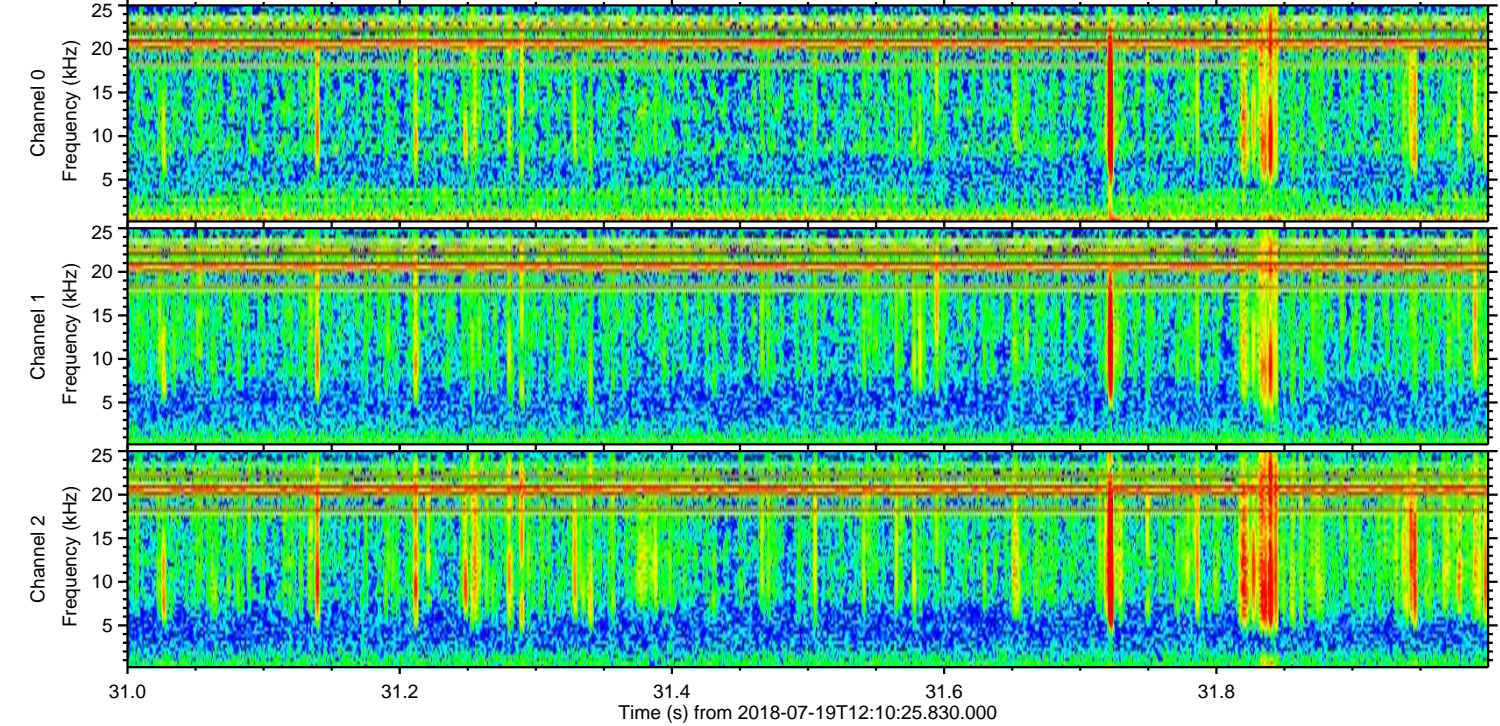
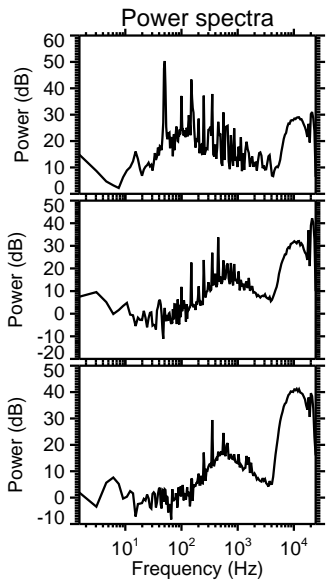
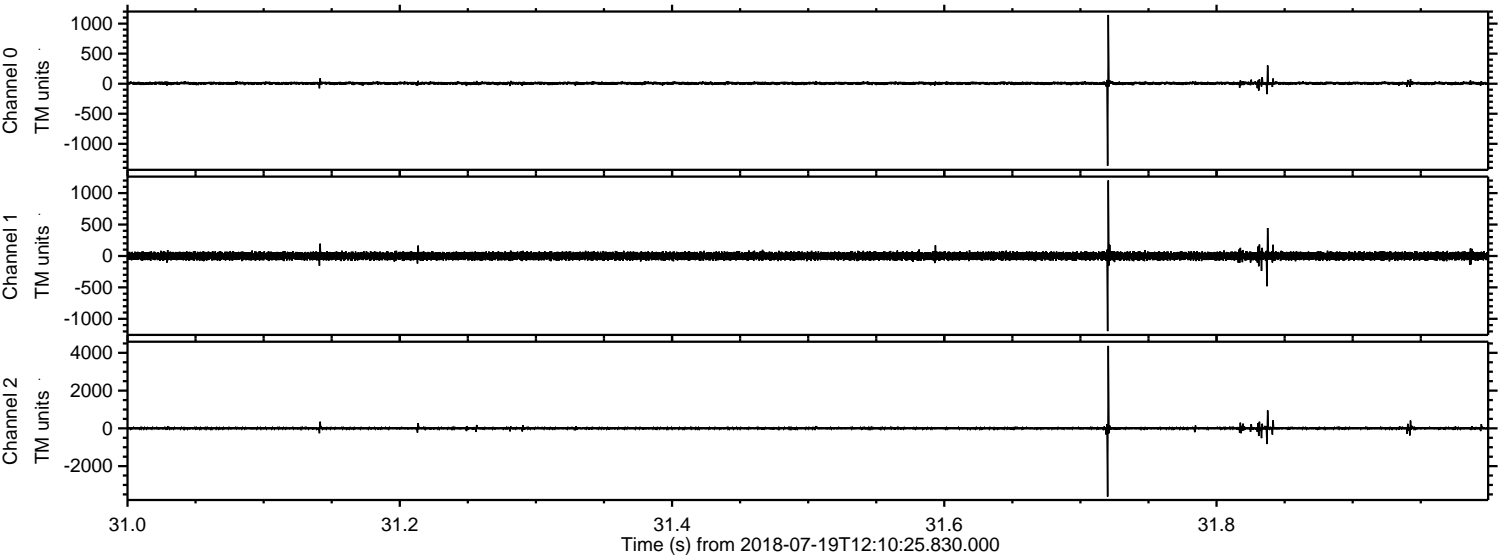
Channel 2
mn: -4736
mx: 7145
 μ : 1.2
 σ : 53.5

ELMAVAN 3D WAVEFORMS (Measured data sampled at 50 kHz) 51000 packets of 144 samples from 2018-07-19T12:10:25.830.000. Part 133/147

Processed Thu Jul 19 14:18:34 2018 by ELM ver.2012-10-06 from 001__elm20180719_121024__dat00.bin

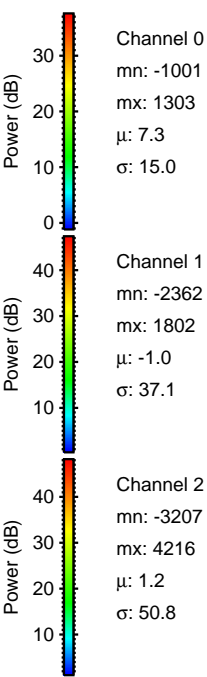
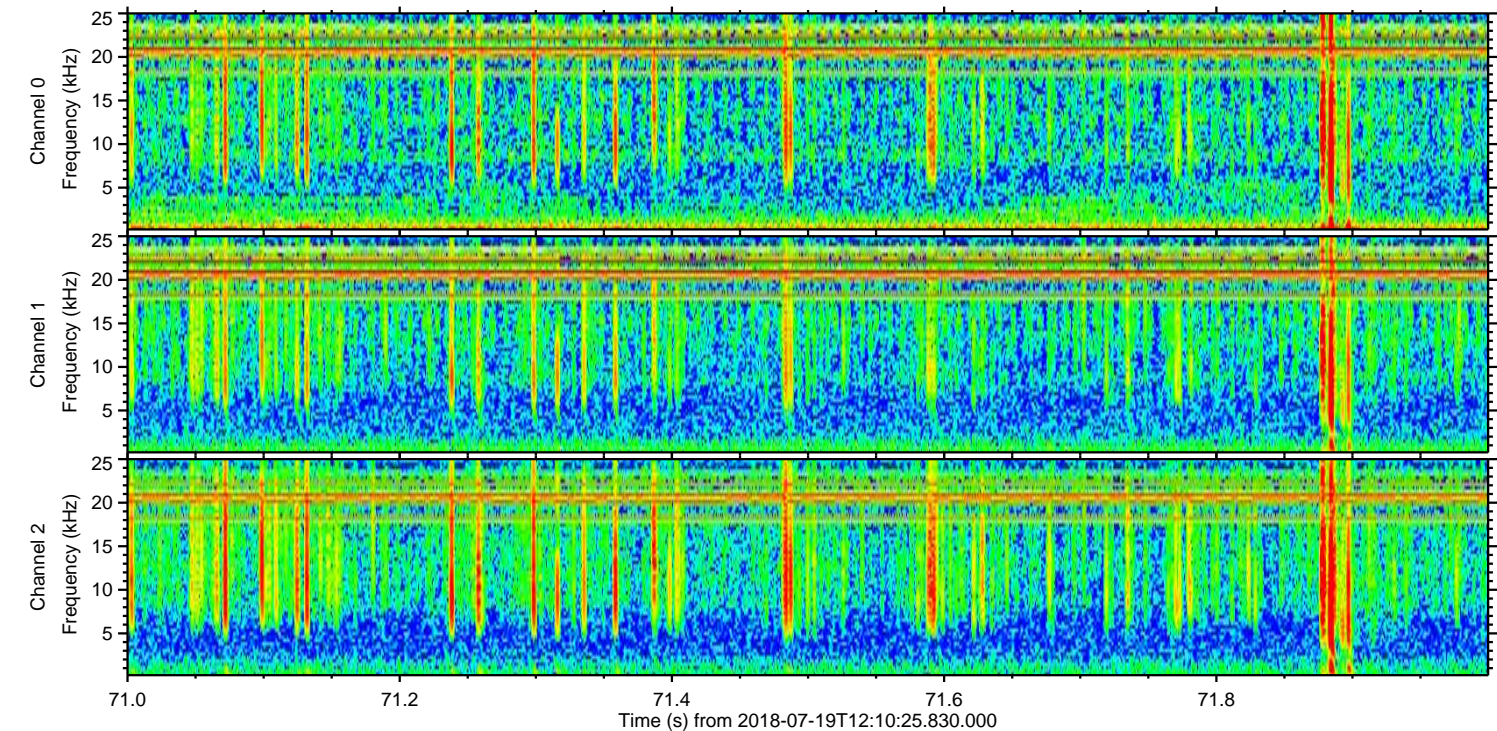
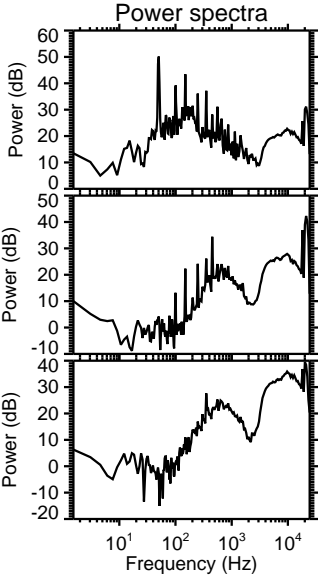
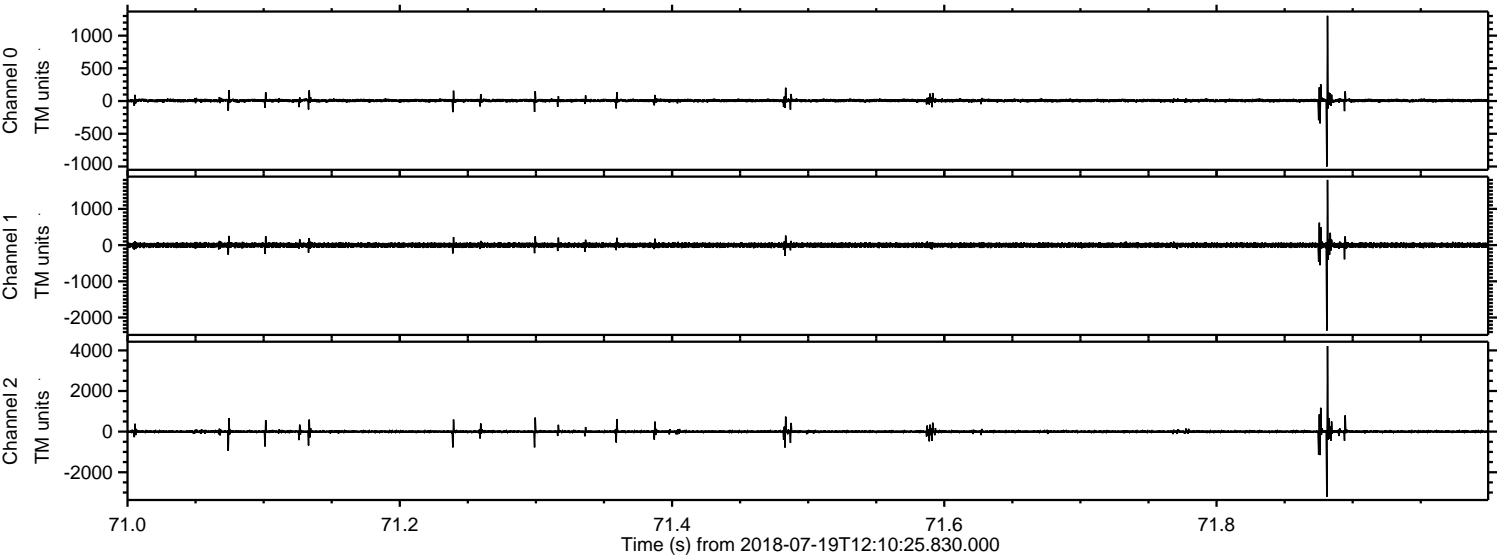


Processed Thu Jul 19 14:18:34 2018 by ELM ver.2012-10-06 from 001__elm20180719_121024__dat00.bin

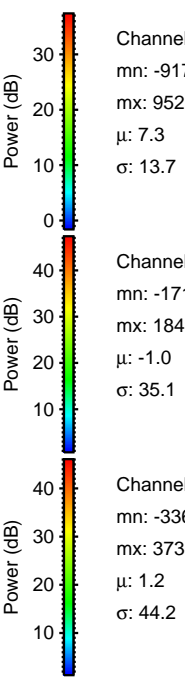
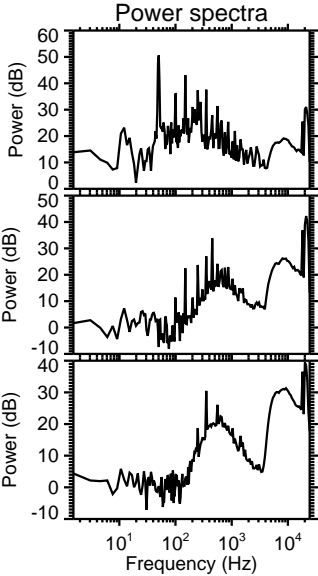
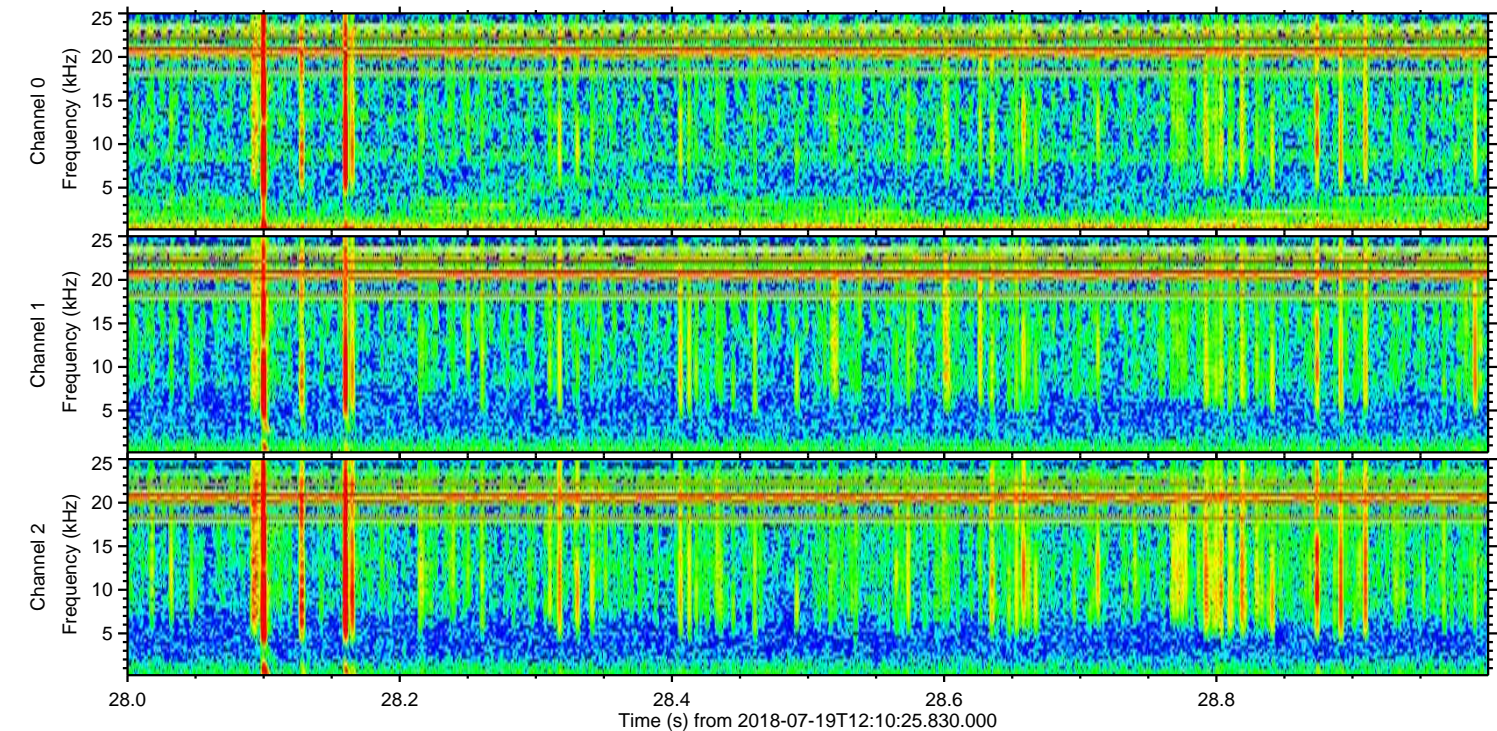
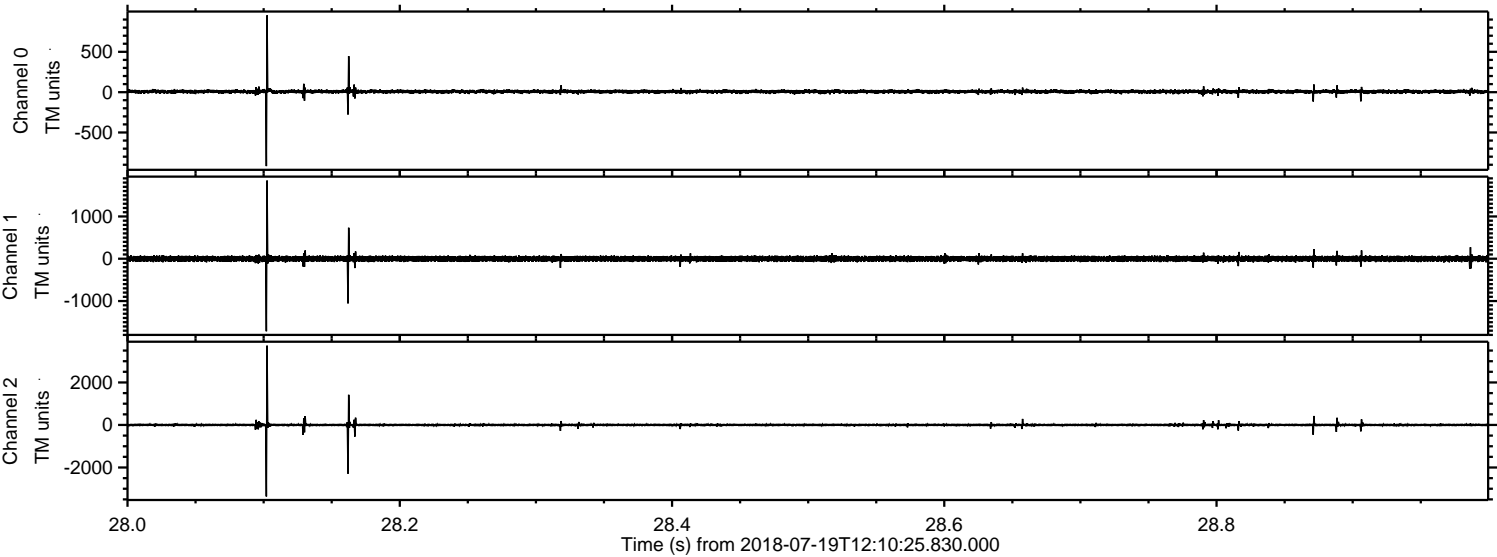


ELMAVAN 3D WAVEFORMS (Measured data sampled at 50 kHz) 51000 packets of 144 samples from 2018-07-19T12:10:25.830.000. Part 72/147

Processed Thu Jul 19 14:18:35 2018 by ELM ver.2012-10-06 from 001__elm20180719_121024__dat00.bin



Processed Thu Jul 19 14:18:36 2018 by ELM ver.2012-10-06 from 001__elm20180719_121024__dat00.bin

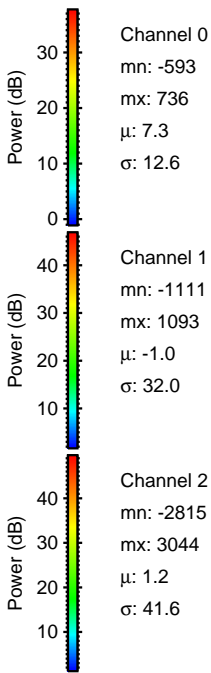
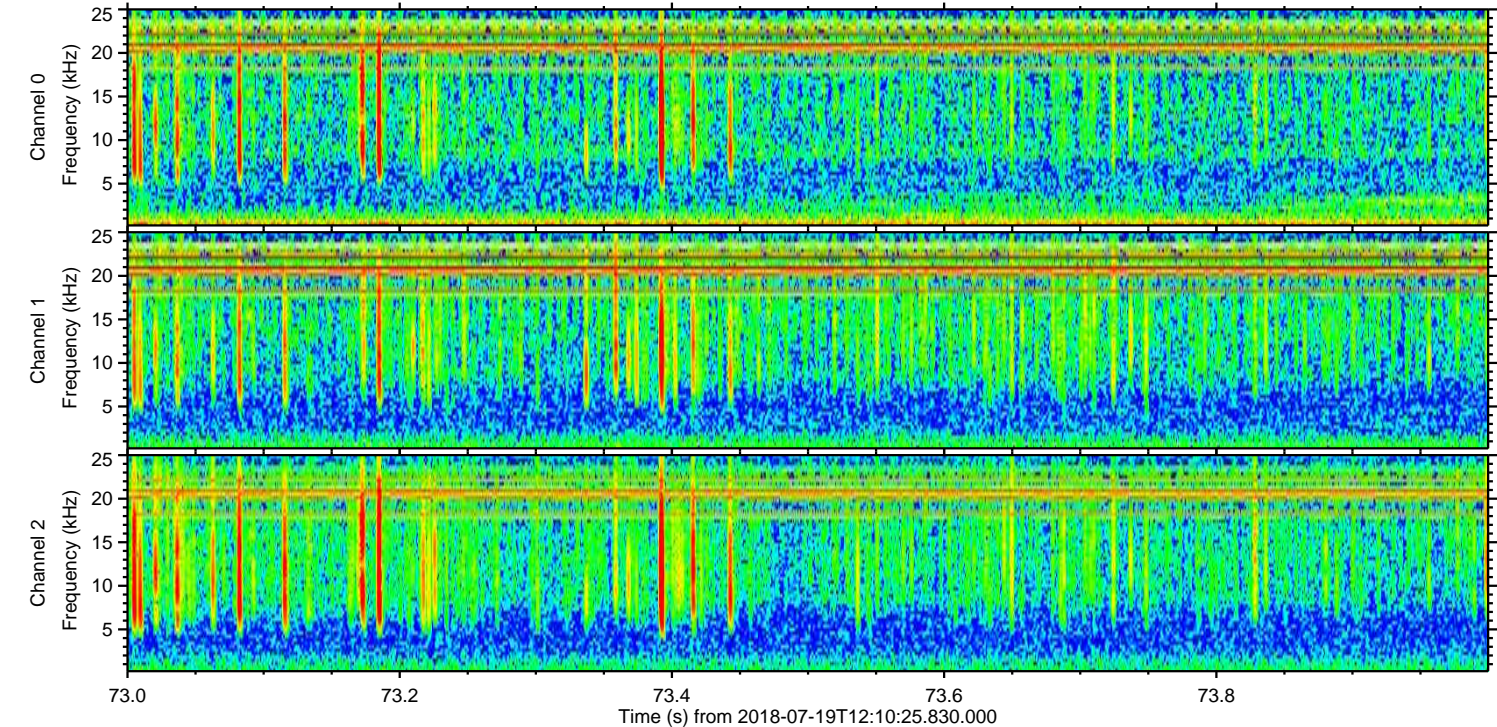
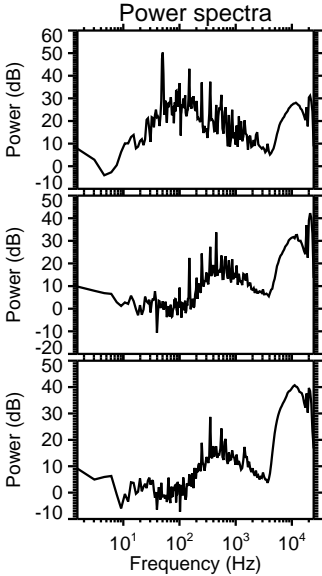
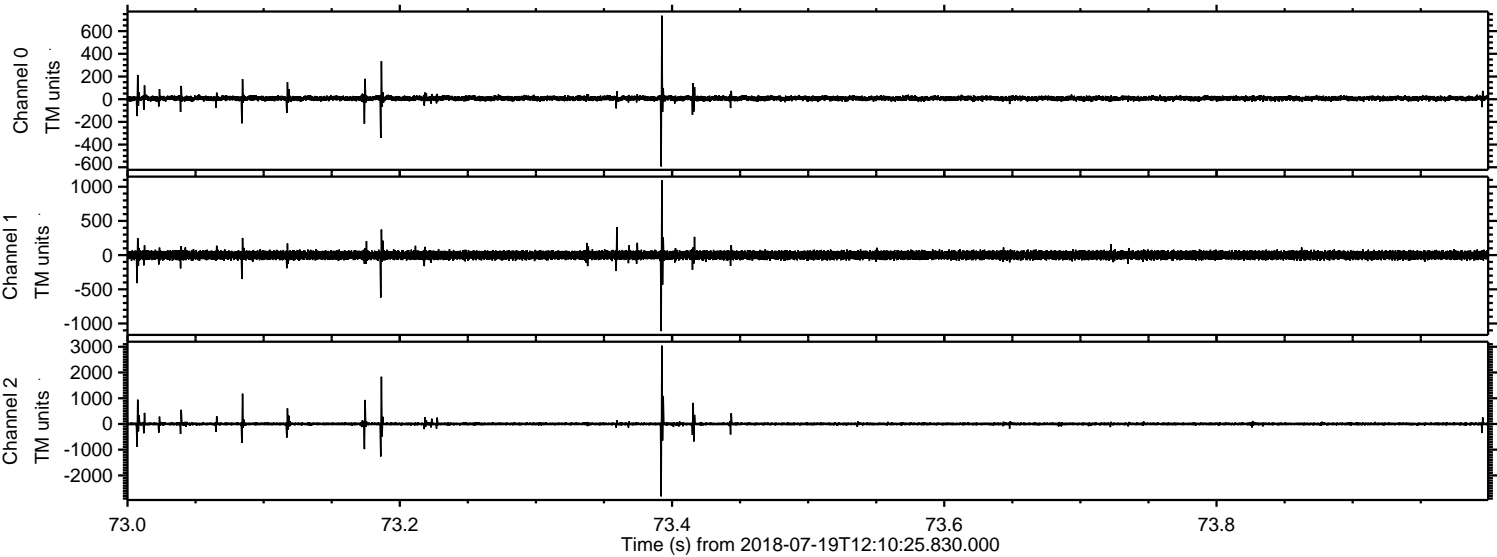


Channel 0
mn: -917
mx: 952
 μ : 7.3
 σ : 13.7

Channel 1
mn: -1715
mx: 1849
 μ : -1.0
 σ : 35.1

Channel 2
mn: -3361
mx: 3730
 μ : 1.2
 σ : 44.2

Processed Thu Jul 19 14:18:36 2018 by ELM ver.2012-10-06 from 001__elm20180719_121024__dat00.bin



Processed Thu Jul 19 14:18:37 2018 by ELM ver.2012-10-06 from 001__elm20180719_121024__dat00.bin

