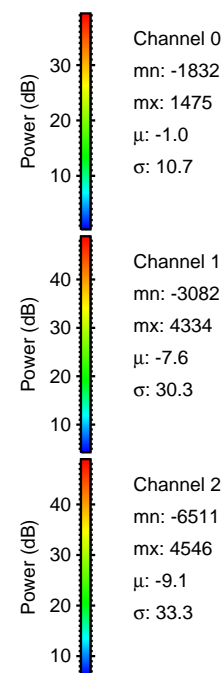
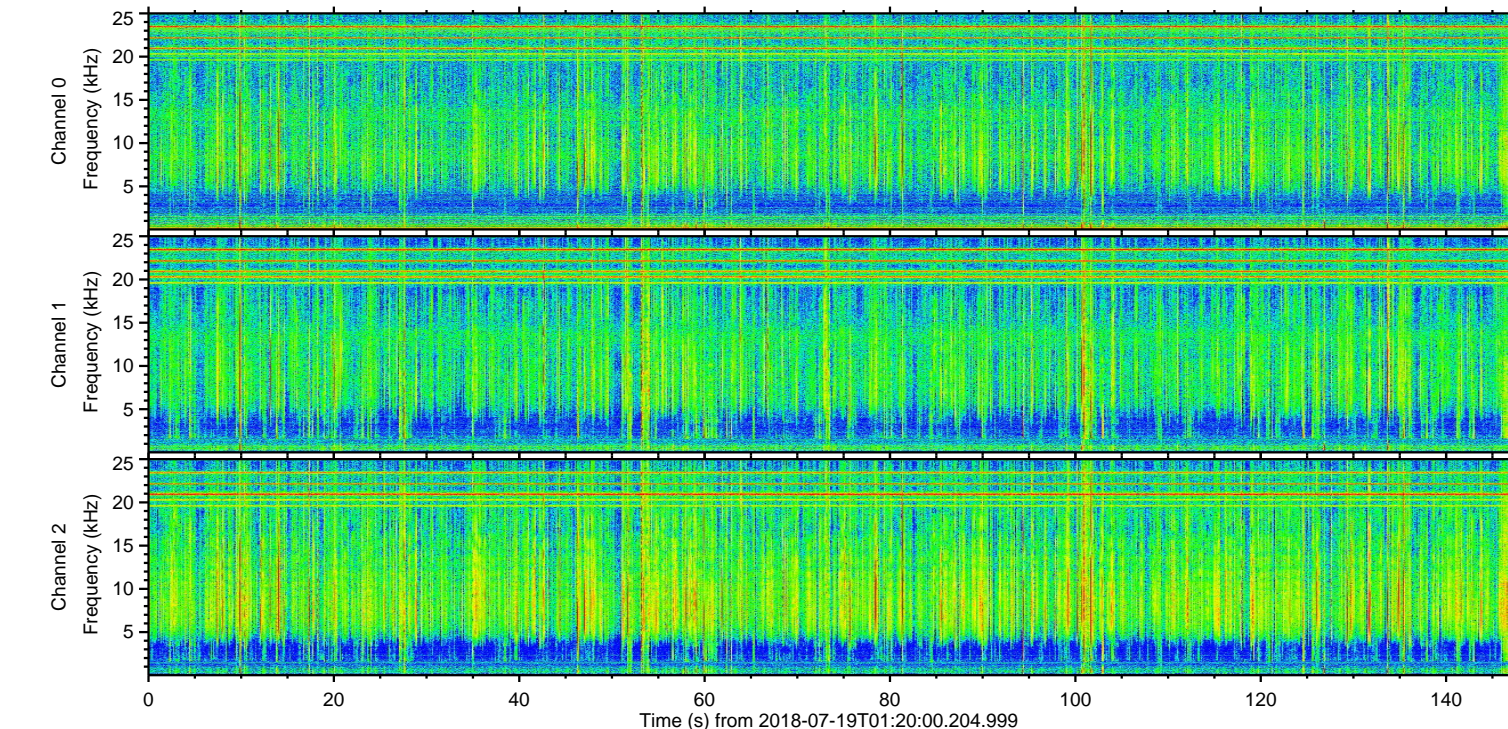
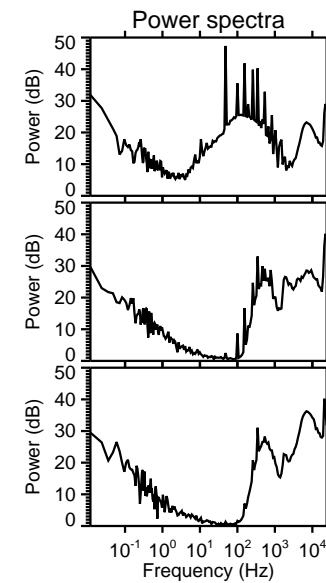
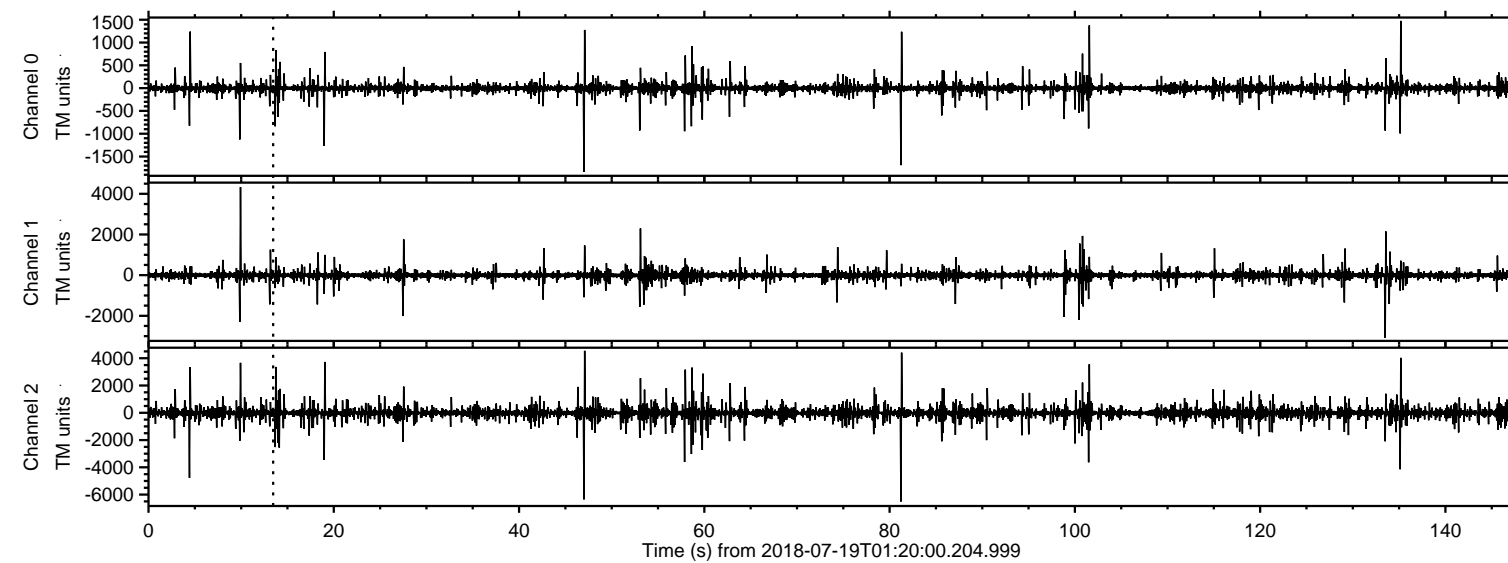
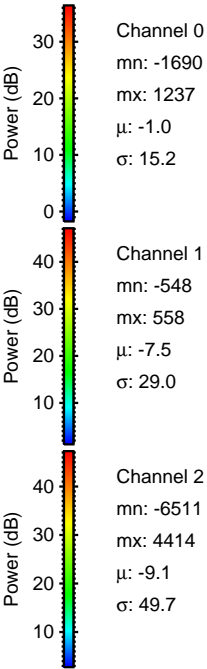
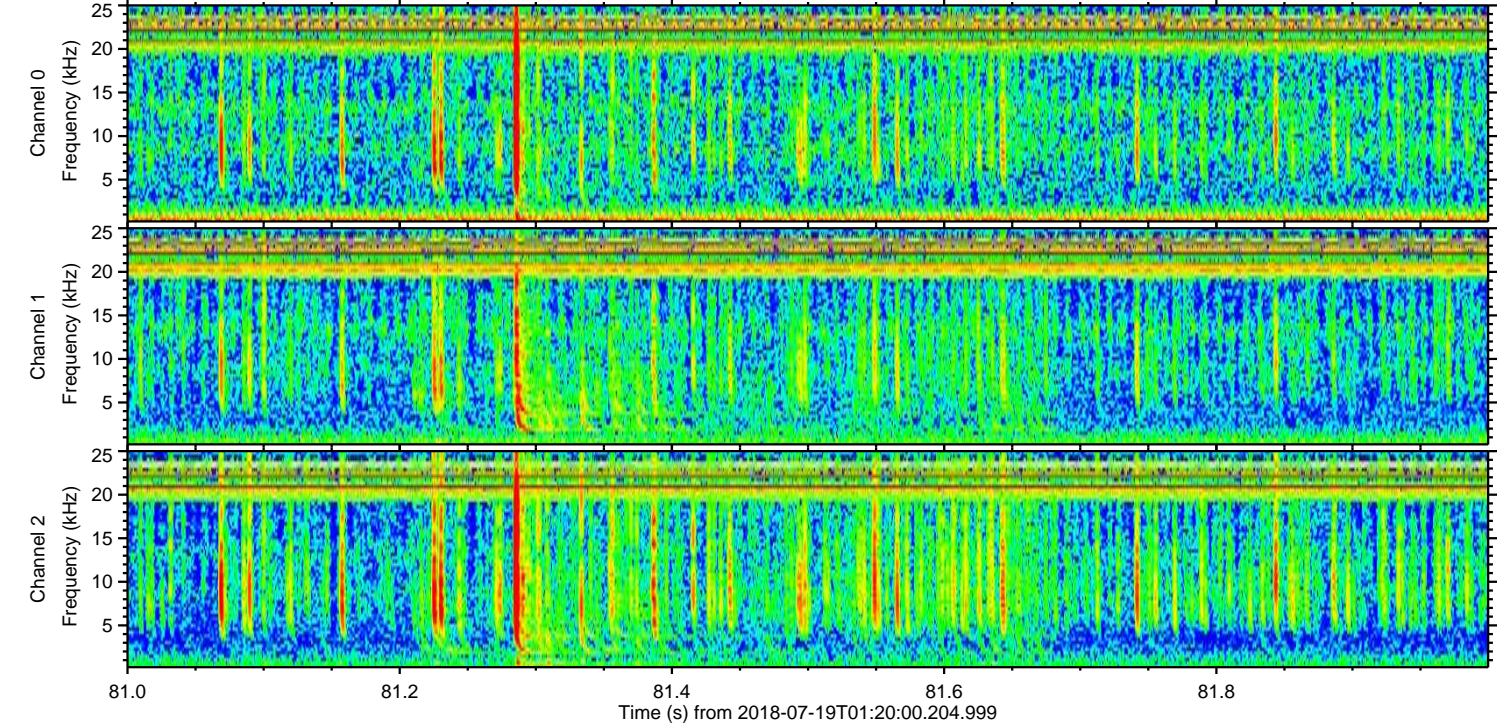
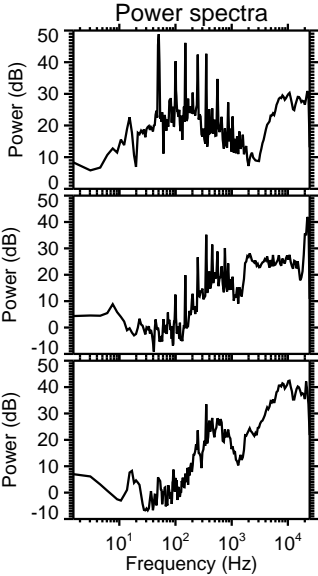
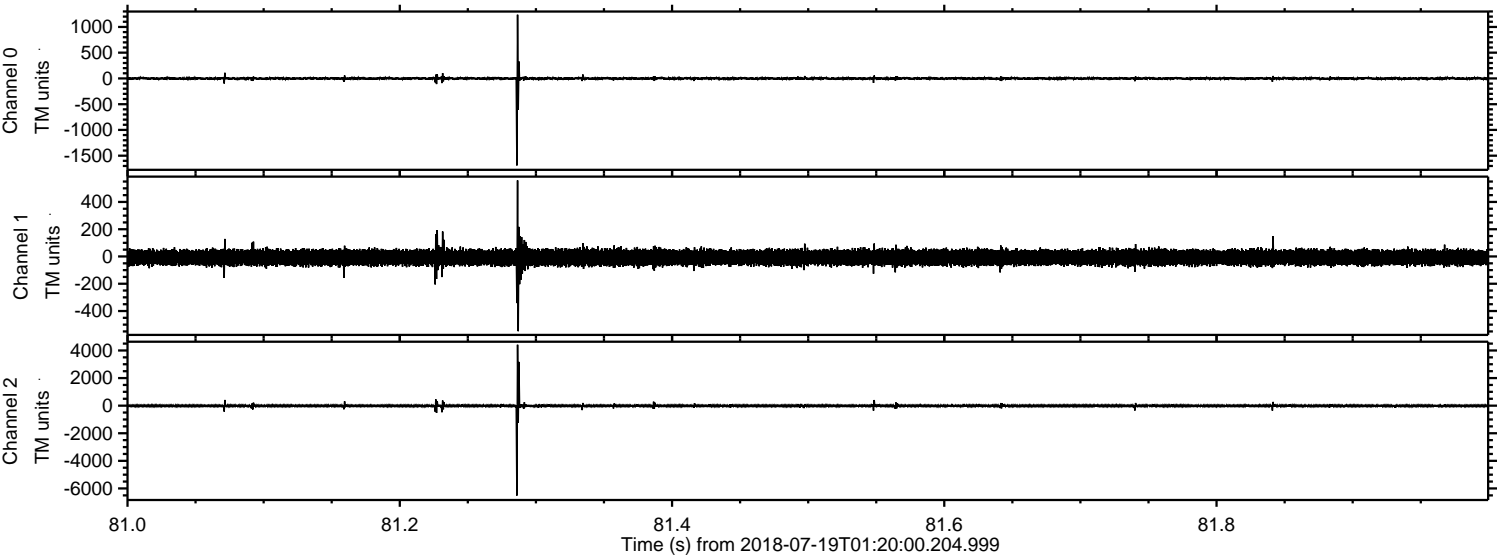


ELMAVAN 3D WAVEFORMS (Measured data sampled at 50 kHz) 50999 packets of 144 samples from 2018-07-19T01:20:00.204.999.

Processed Thu Jul 19 03:28:24 2018 by ELM ver.2012-10-06 from 001__elm20180719_011959__dat00.bin

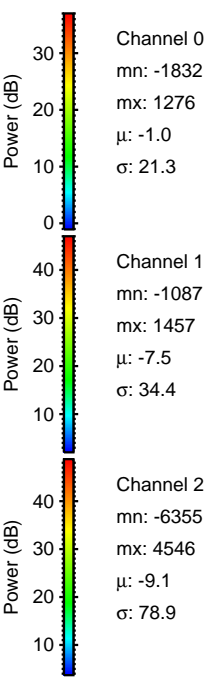
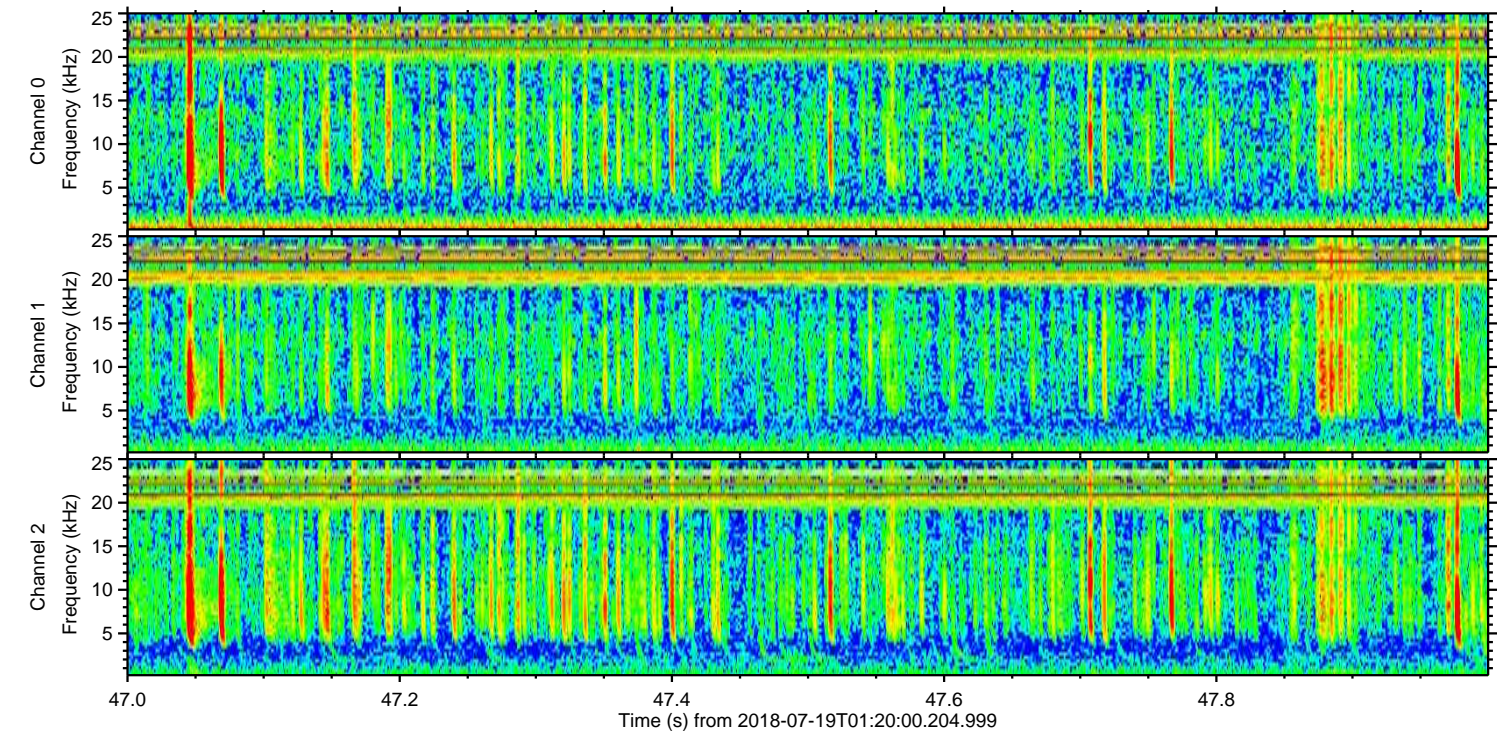
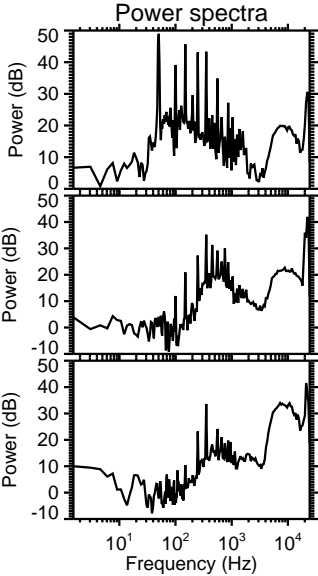
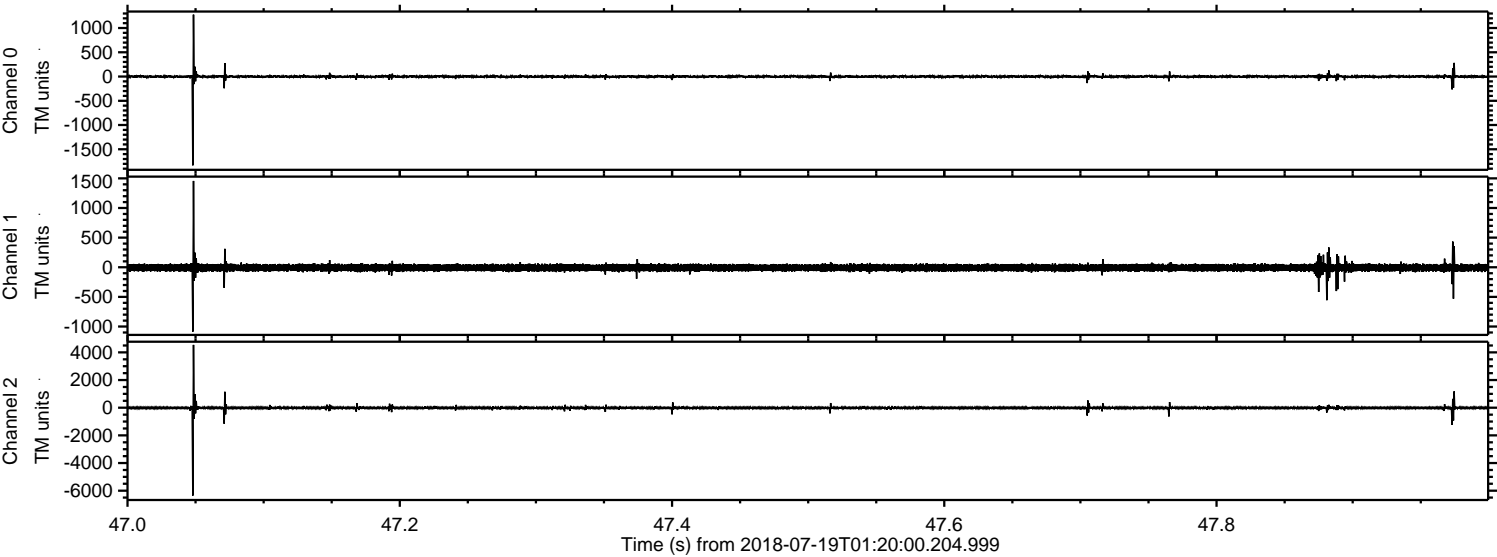


Processed Thu Jul 19 03:28:30 2018 by ELM ver.2012-10-06 from 001__elm20180719_011959__dat00.bin

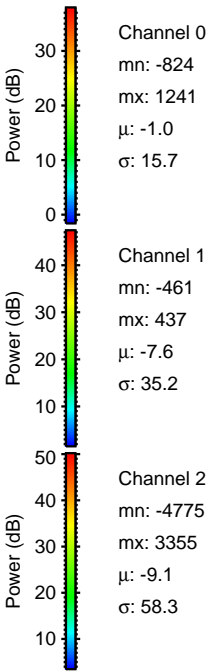
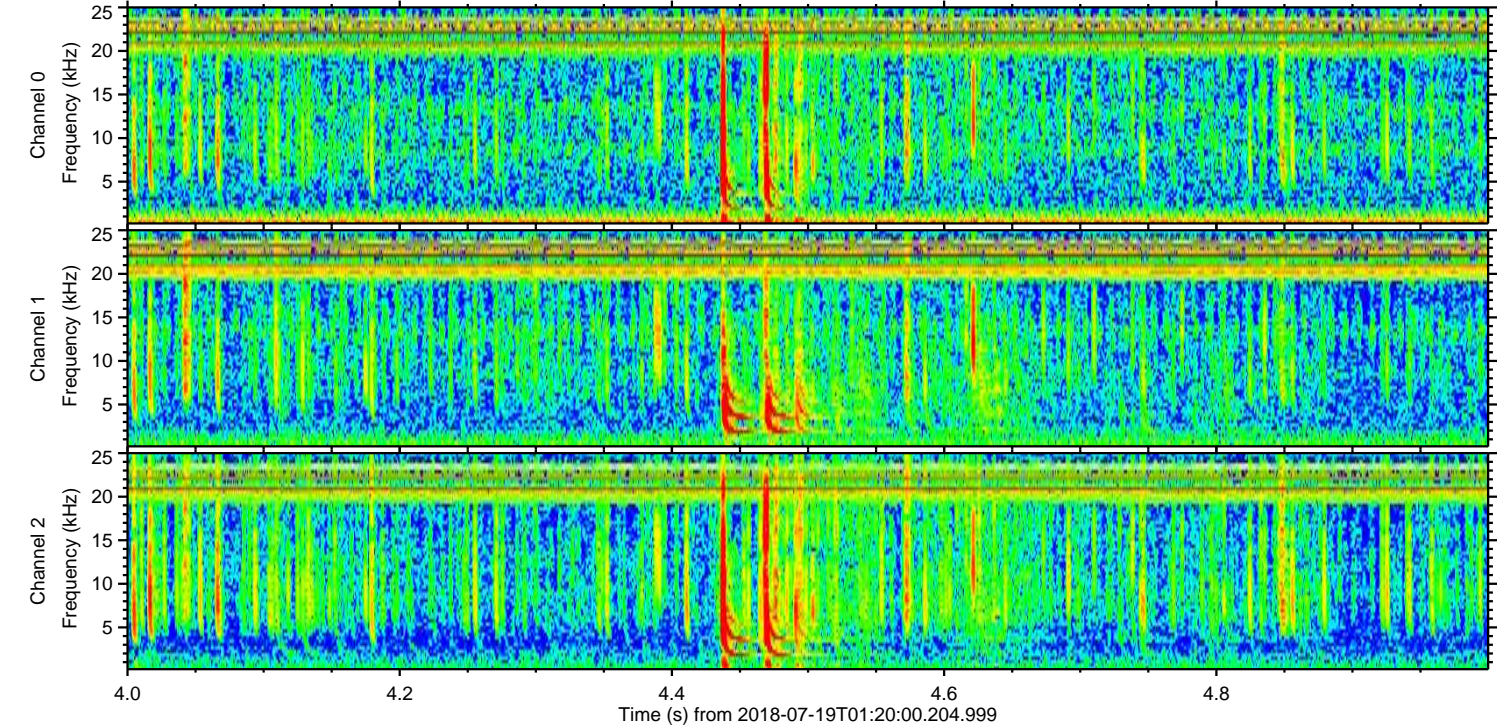
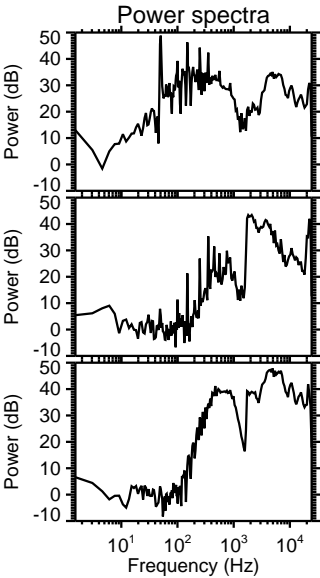
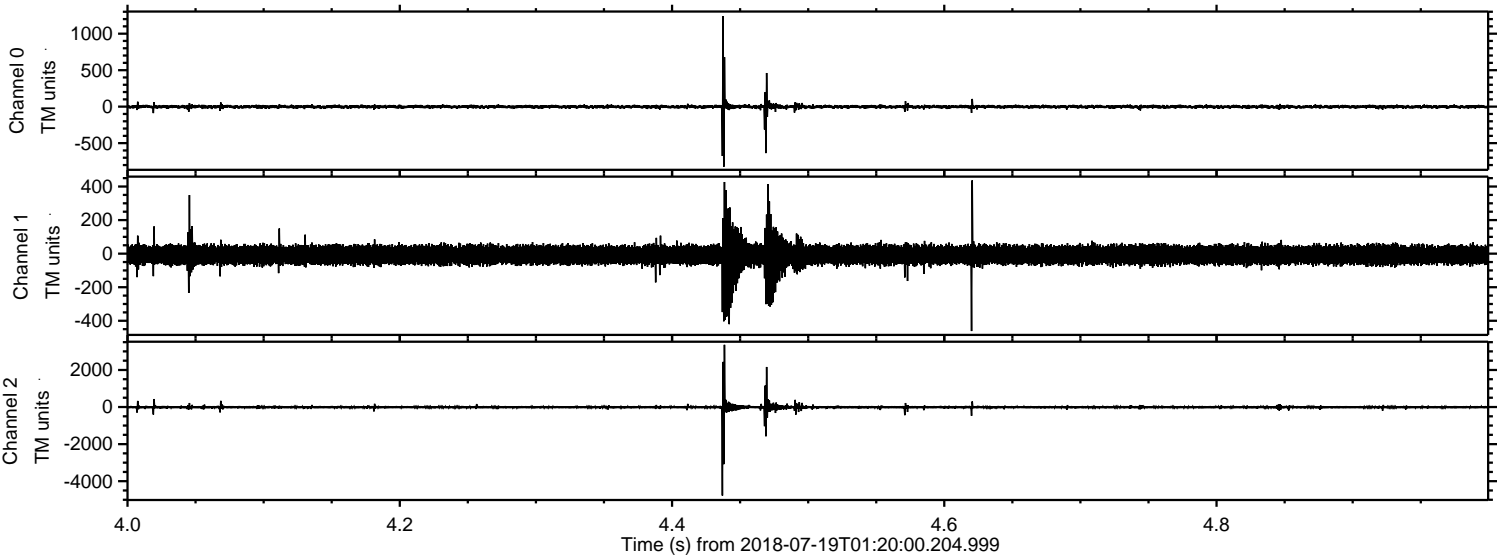


ELMAVAN 3D WAVEFORMS (Measured data sampled at 50 kHz) 50999 packets of 144 samples from 2018-07-19T01:20:00.204.999. Part 48/147

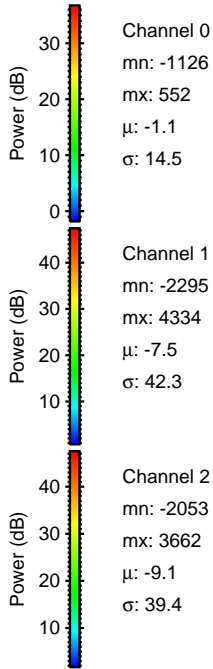
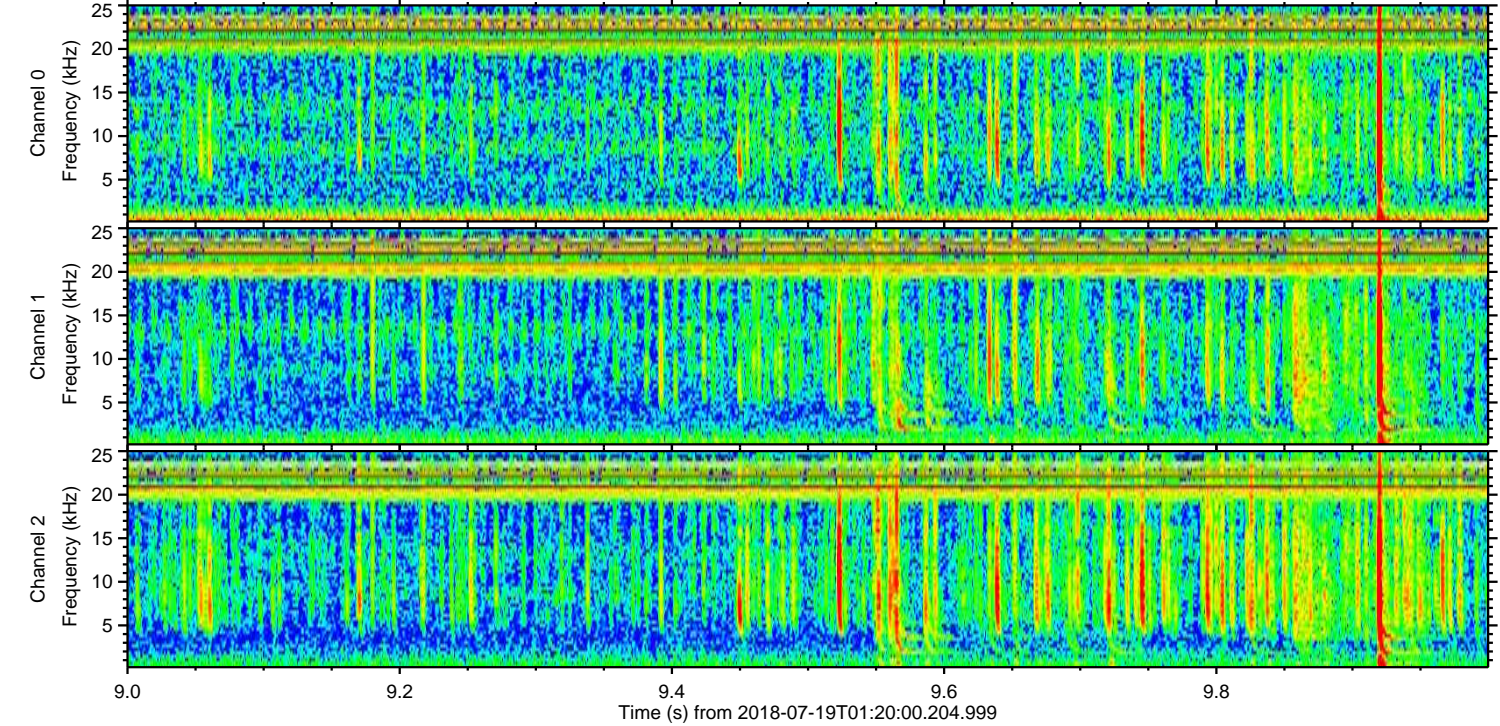
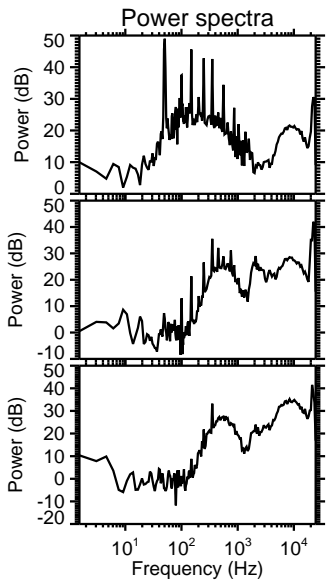
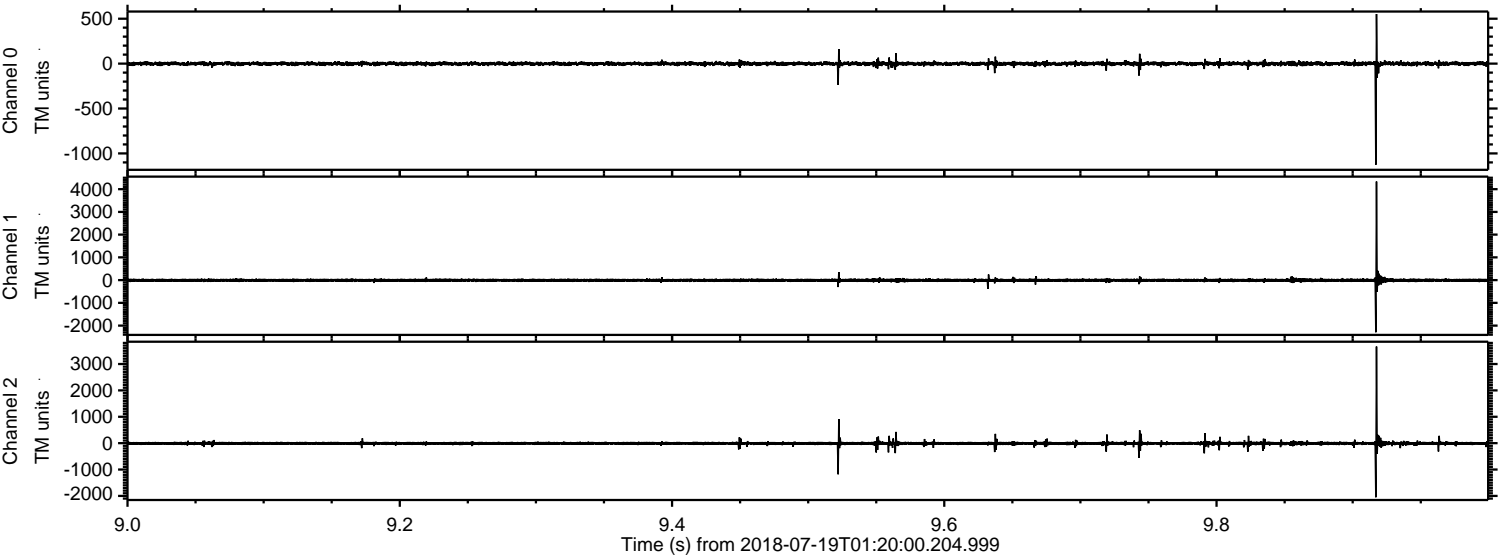
Processed Thu Jul 19 03:28:31 2018 by ELM ver.2012-10-06 from 001__elm20180719_011959__dat00.bin



Processed Thu Jul 19 03:28:32 2018 by ELM ver.2012-10-06 from 001__elm20180719_011959__dat00.bin

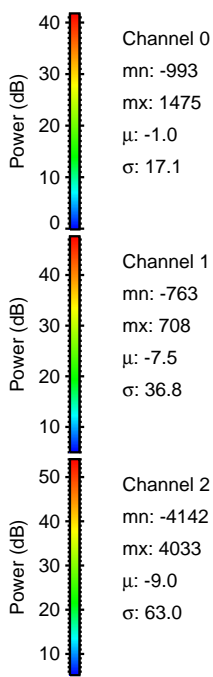
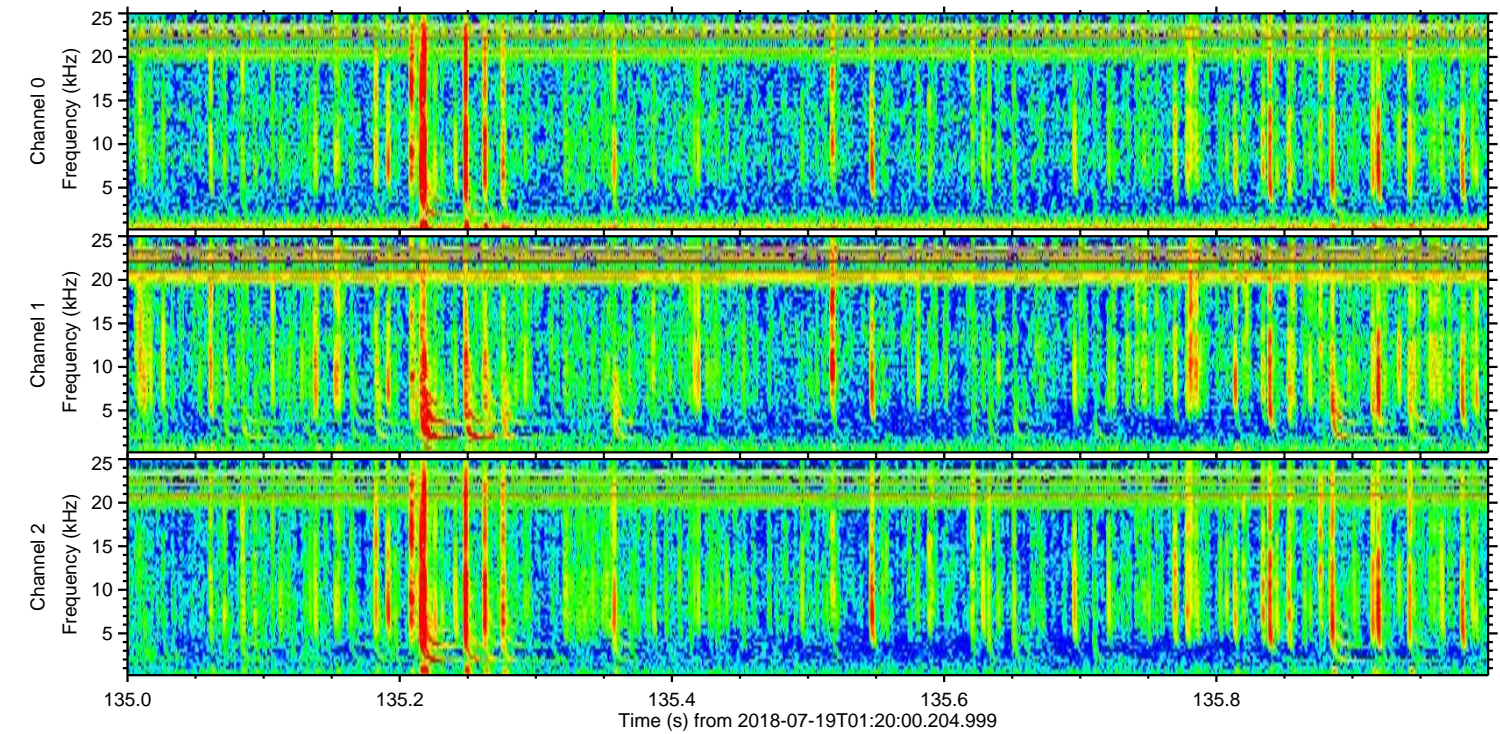
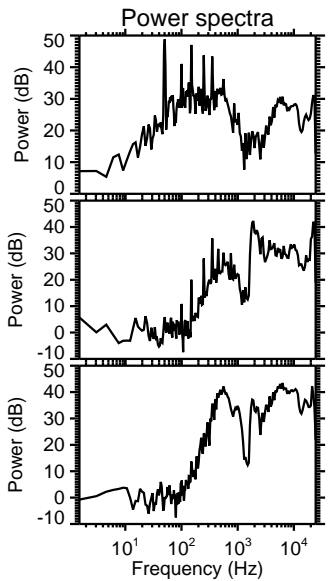
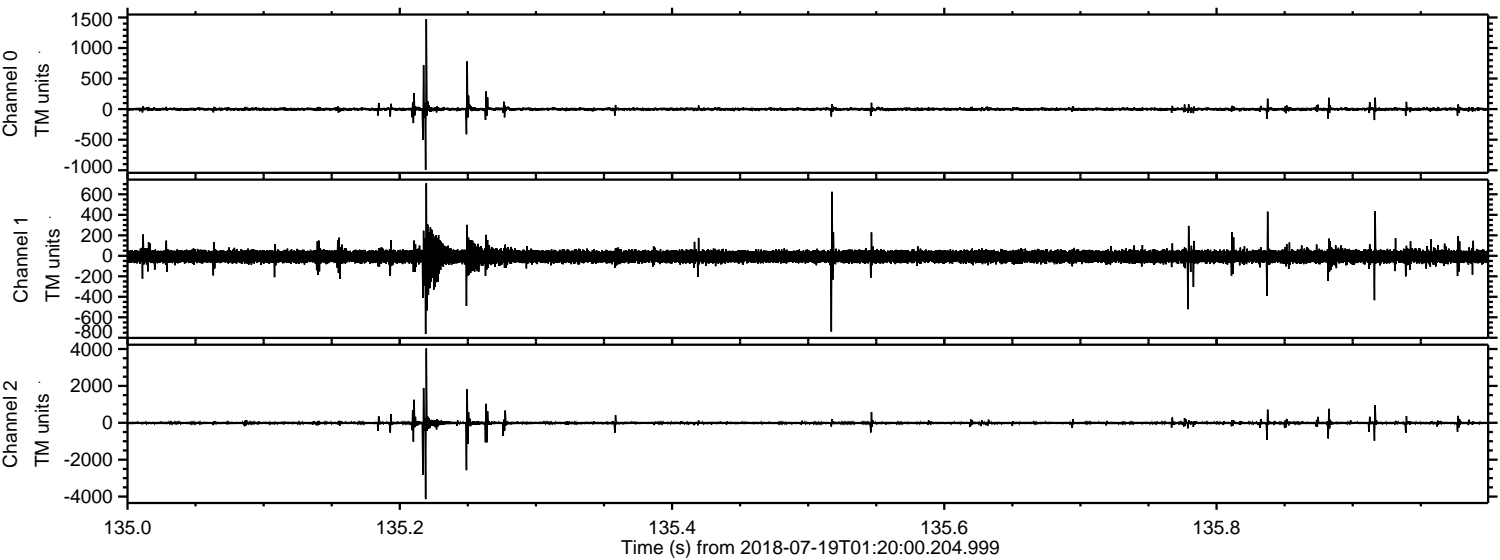


Processed Thu Jul 19 03:28:32 2018 by ELM ver.2012-10-06 from 001__elm20180719_011959__dat00.bin

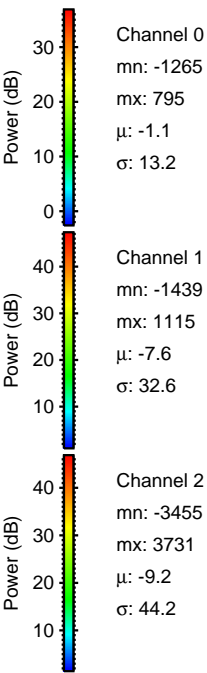
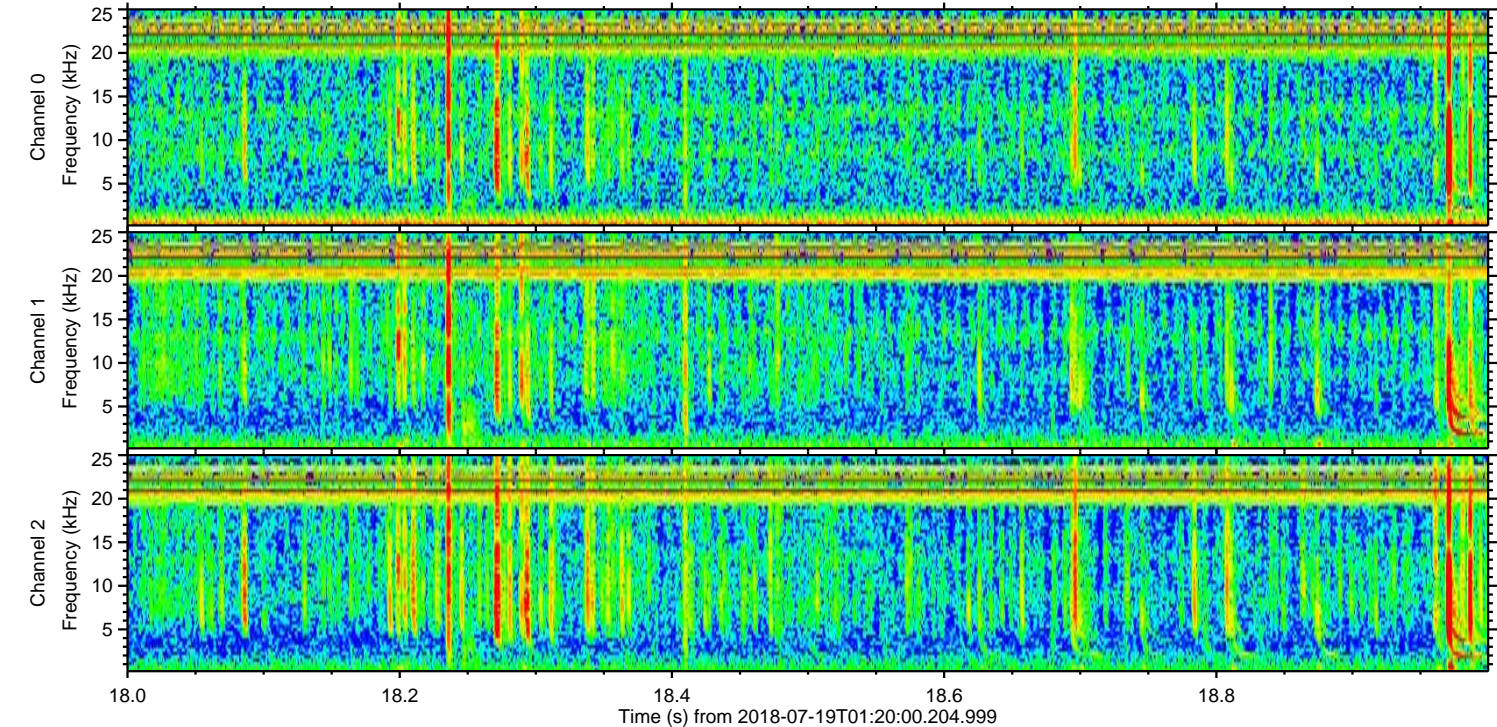
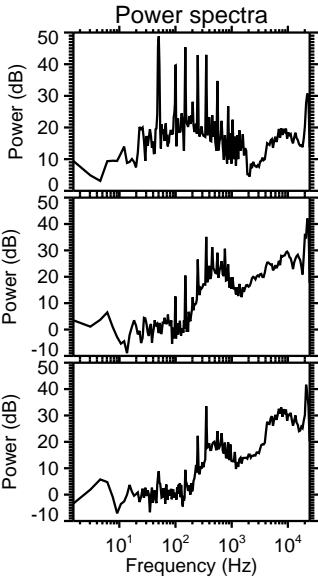
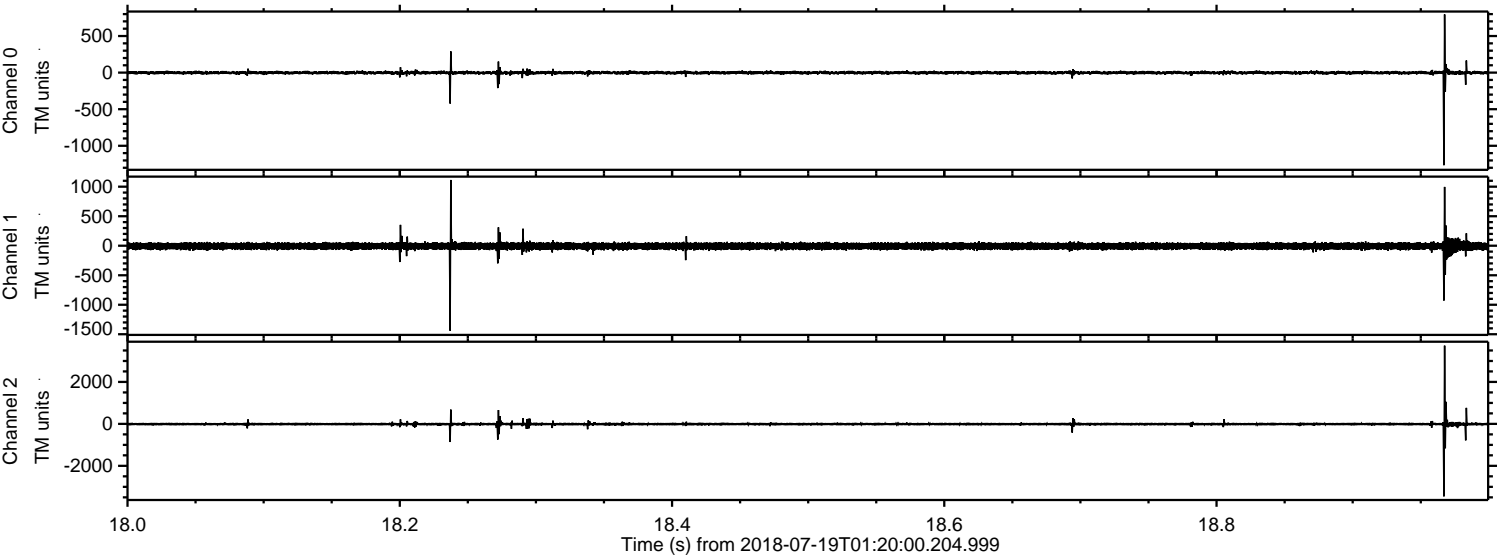


ELMAVAN 3D WAVEFORMS (Measured data sampled at 50 kHz) 50999 packets of 144 samples from 2018-07-19T01:20:00.204.999. Part 136/147

Processed Thu Jul 19 03:28:33 2018 by ELM ver.2012-10-06 from 001__elm20180719_011959__dat00.bin

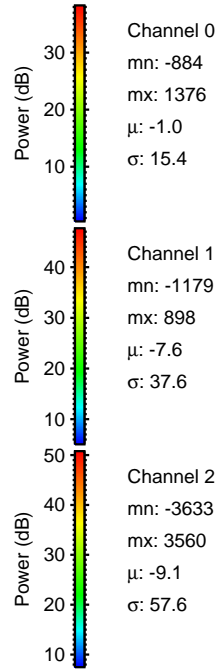
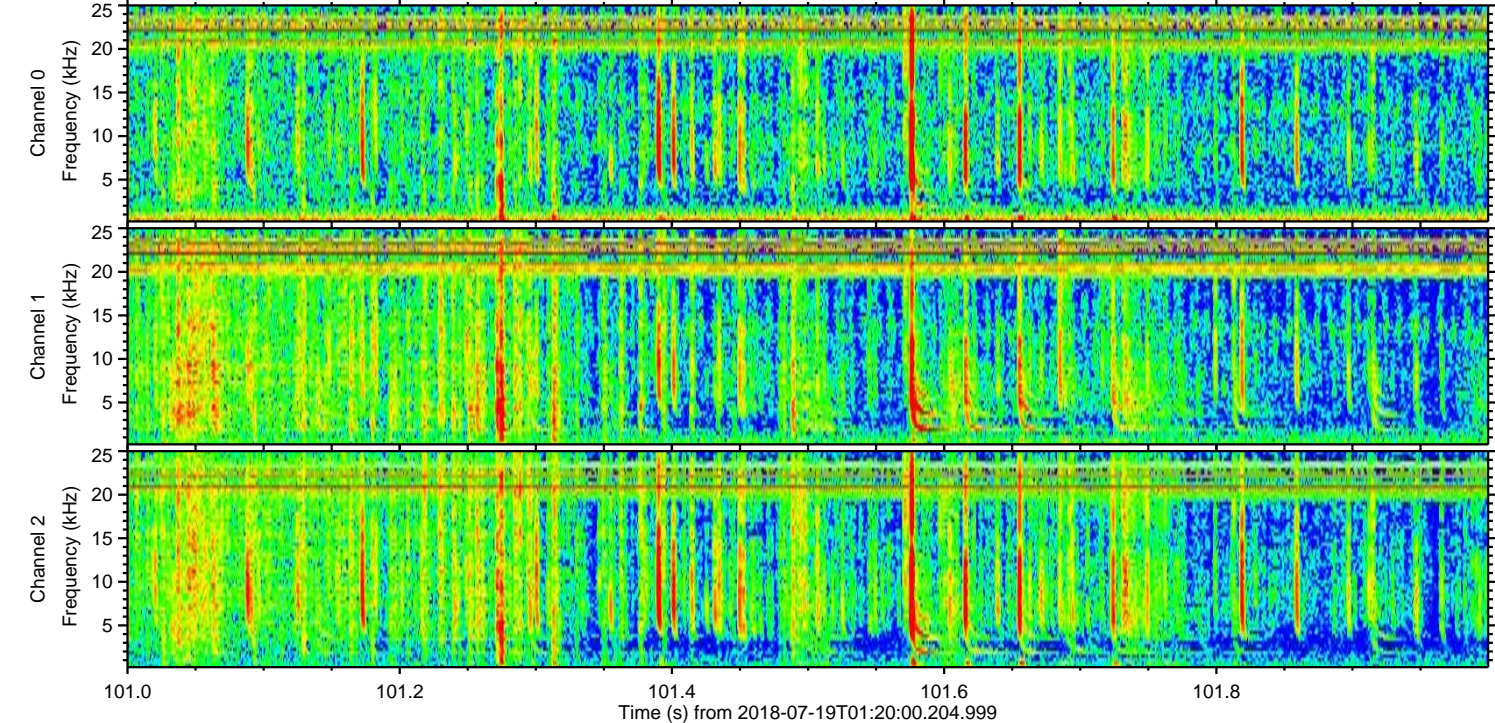
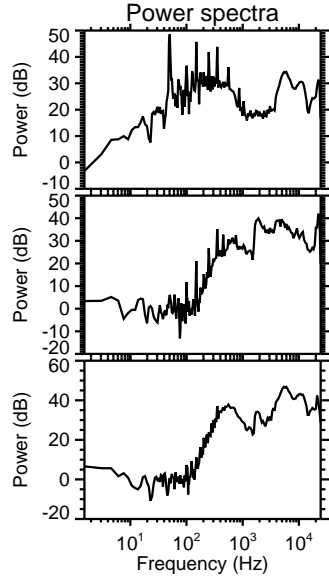
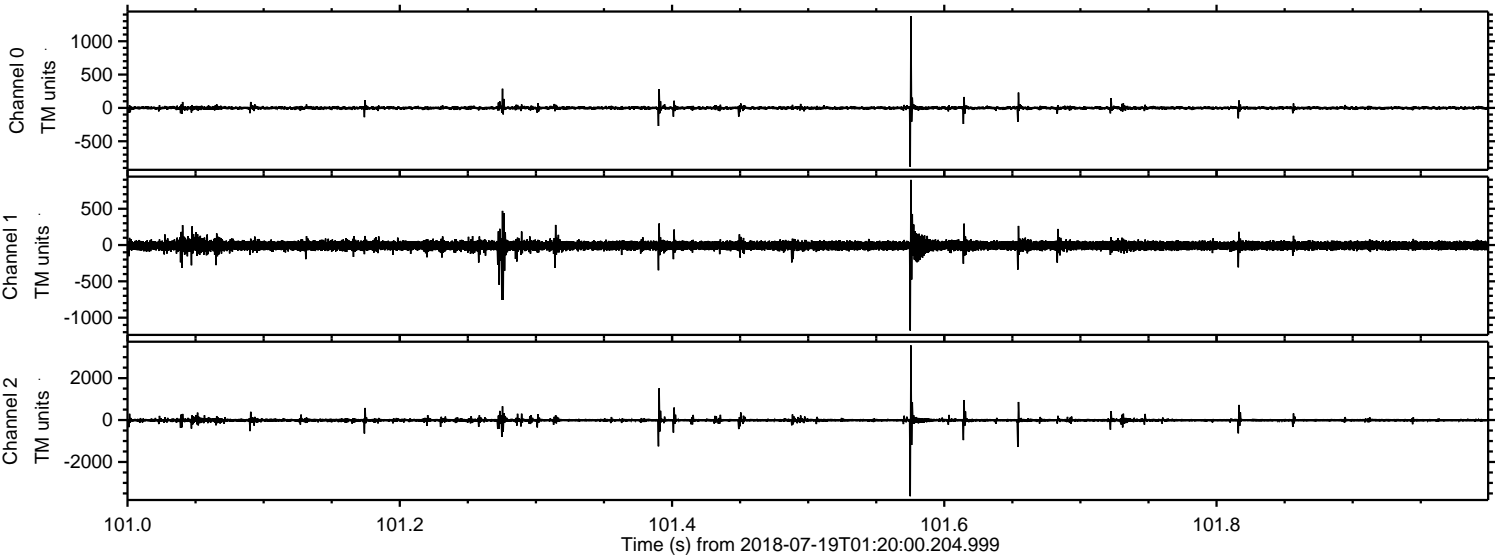


Processed Thu Jul 19 03:28:34 2018 by ELM ver.2012-10-06 from 001__elm20180719_011959__dat00.bin

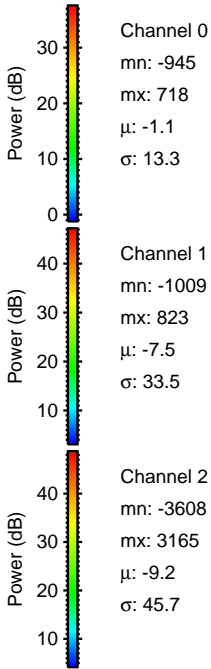
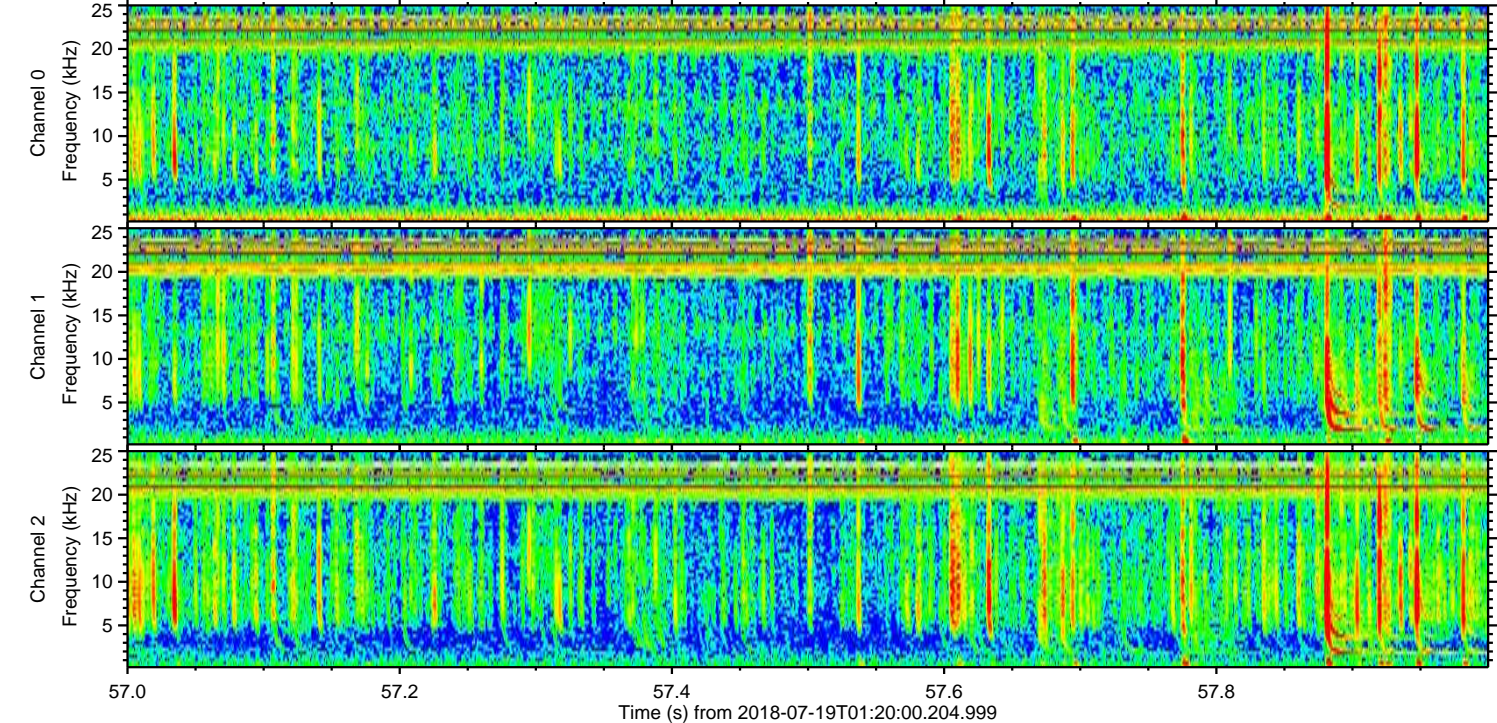
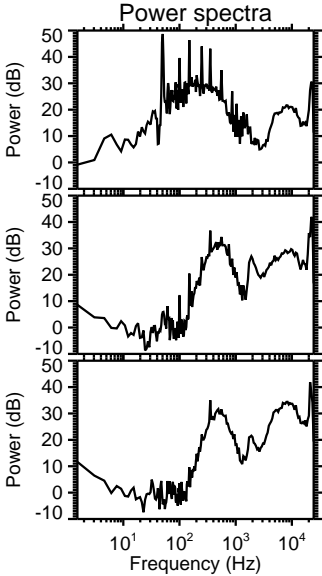
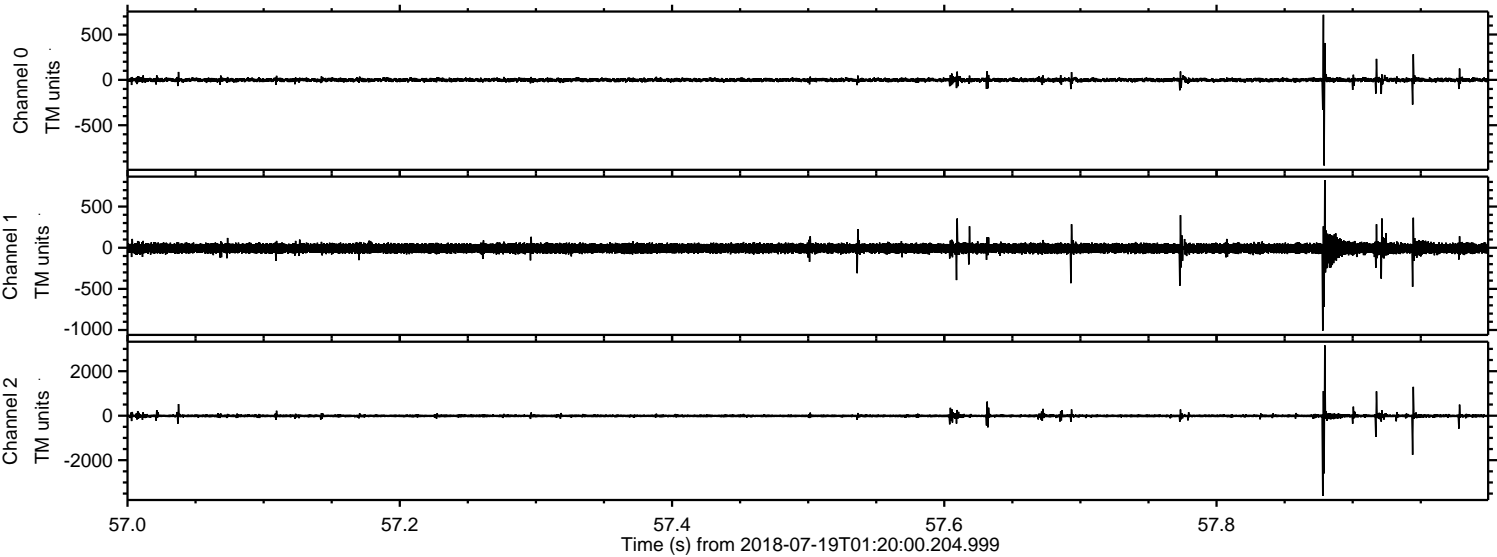


ELMAVAN 3D WAVEFORMS (Measured data sampled at 50 kHz) 50999 packets of 144 samples from 2018-07-19T01:20:00.204.999. Part 102/147

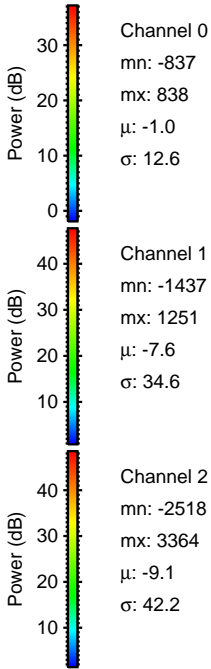
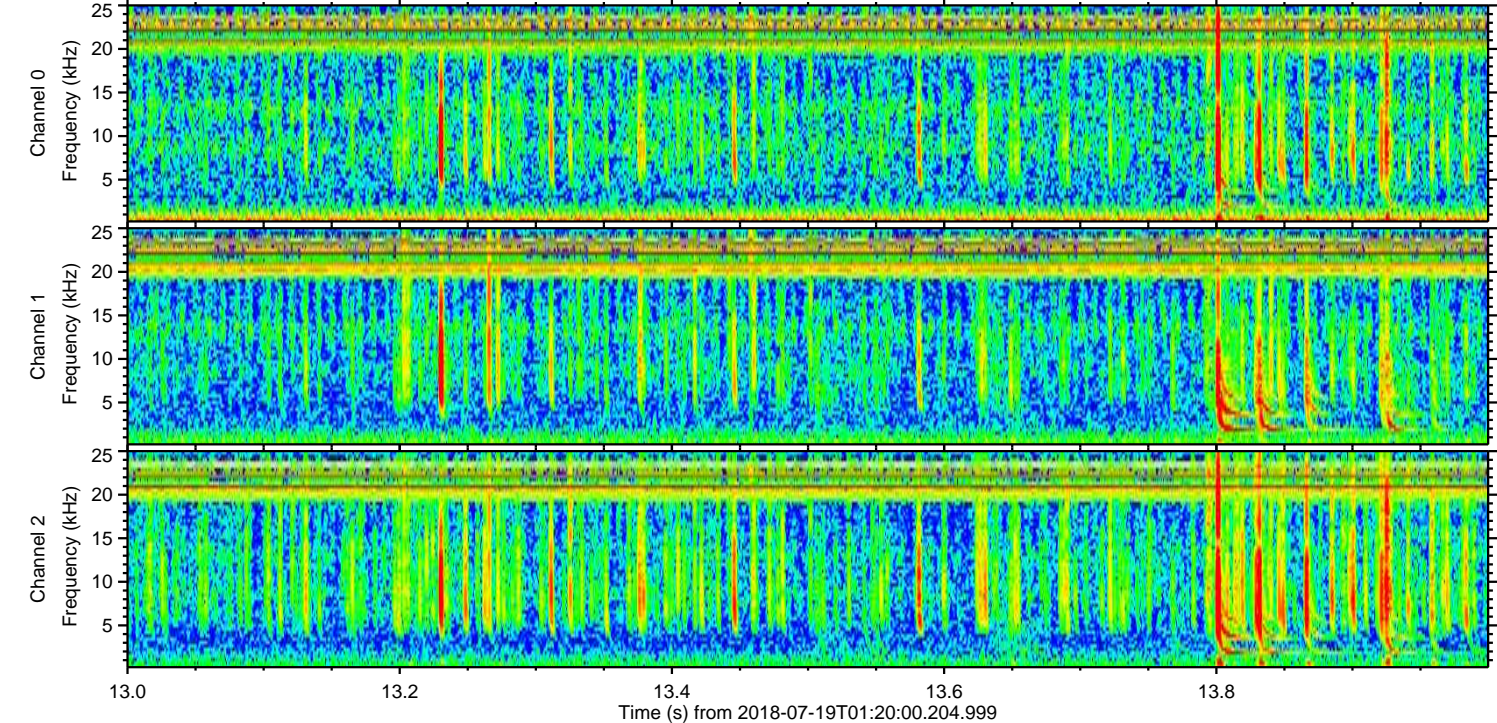
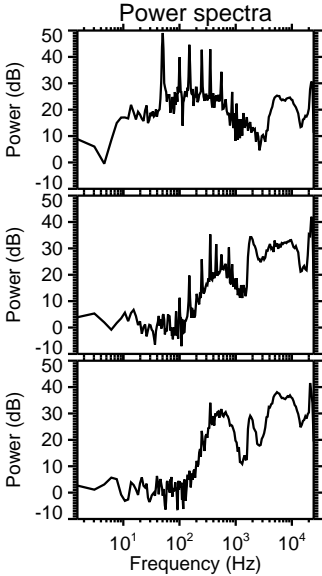
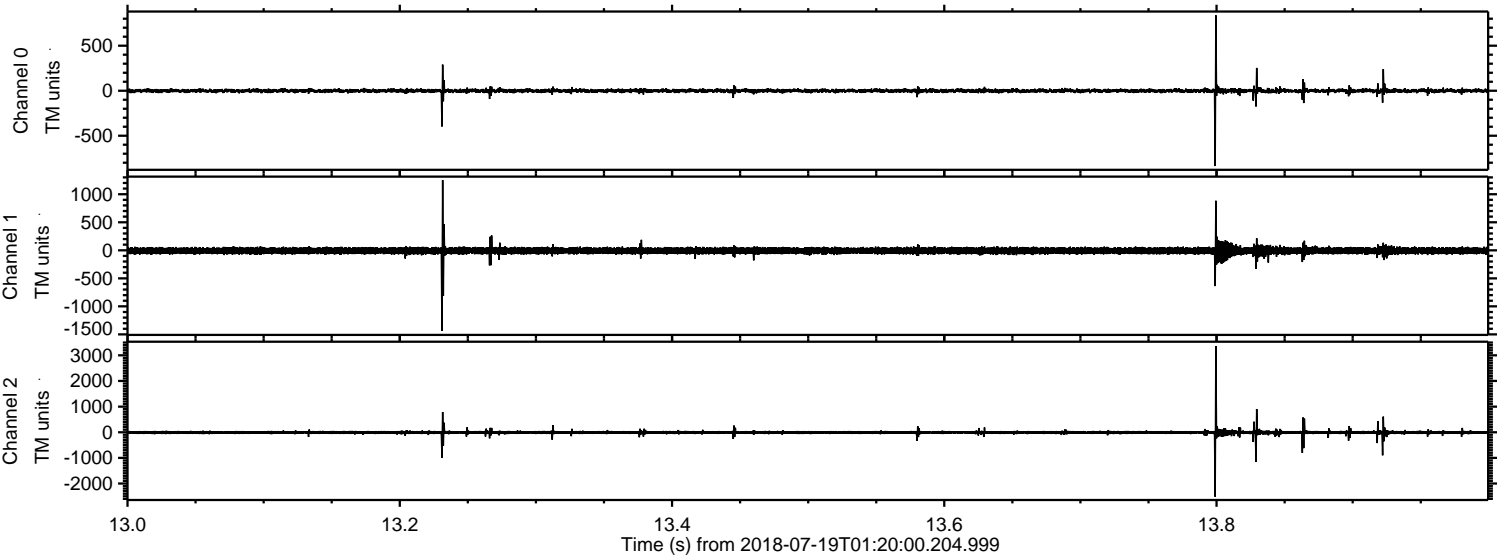
Processed Thu Jul 19 03:28:34 2018 by ELM ver.2012-10-06 from 001__elm20180719_011959__dat00.bin



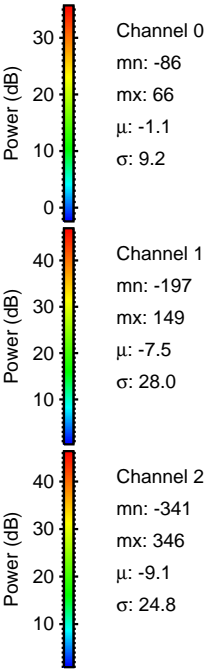
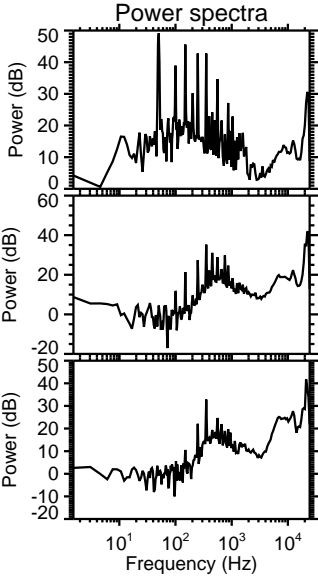
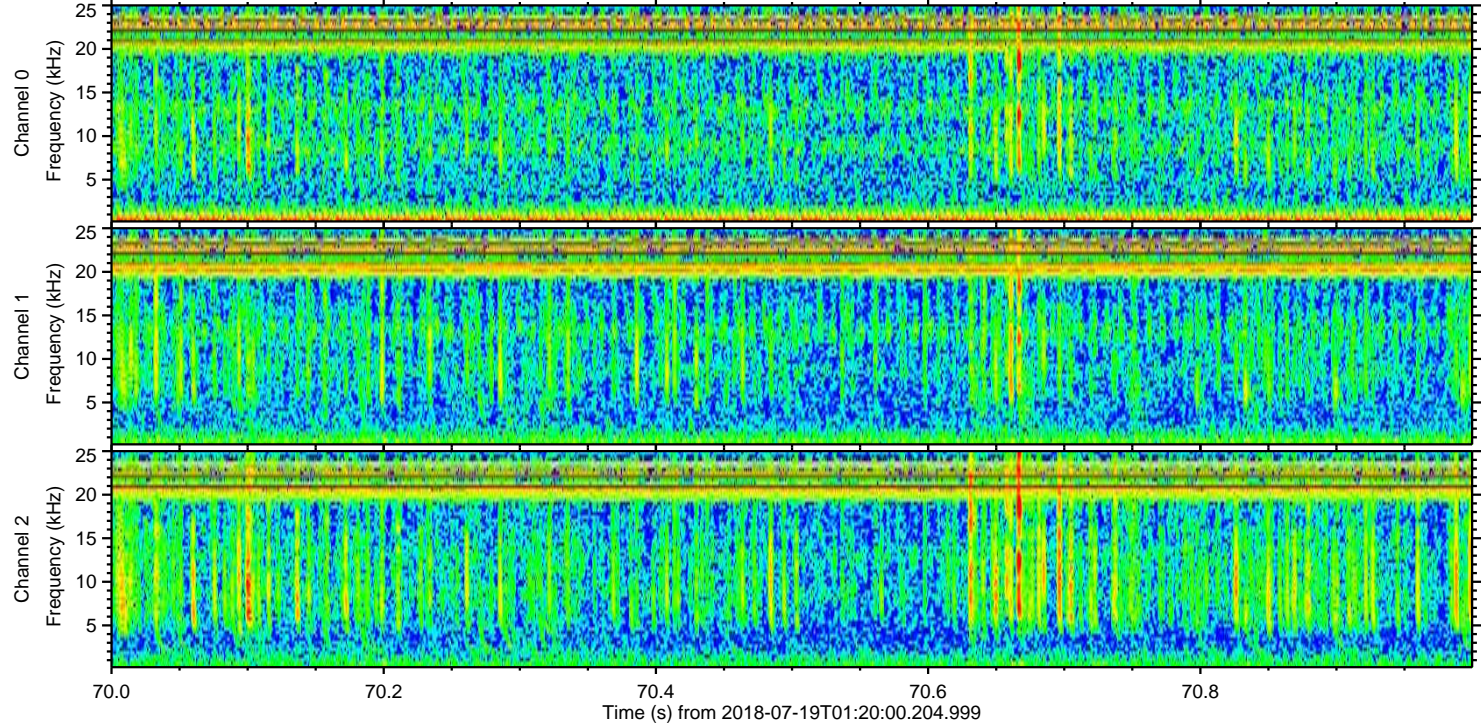
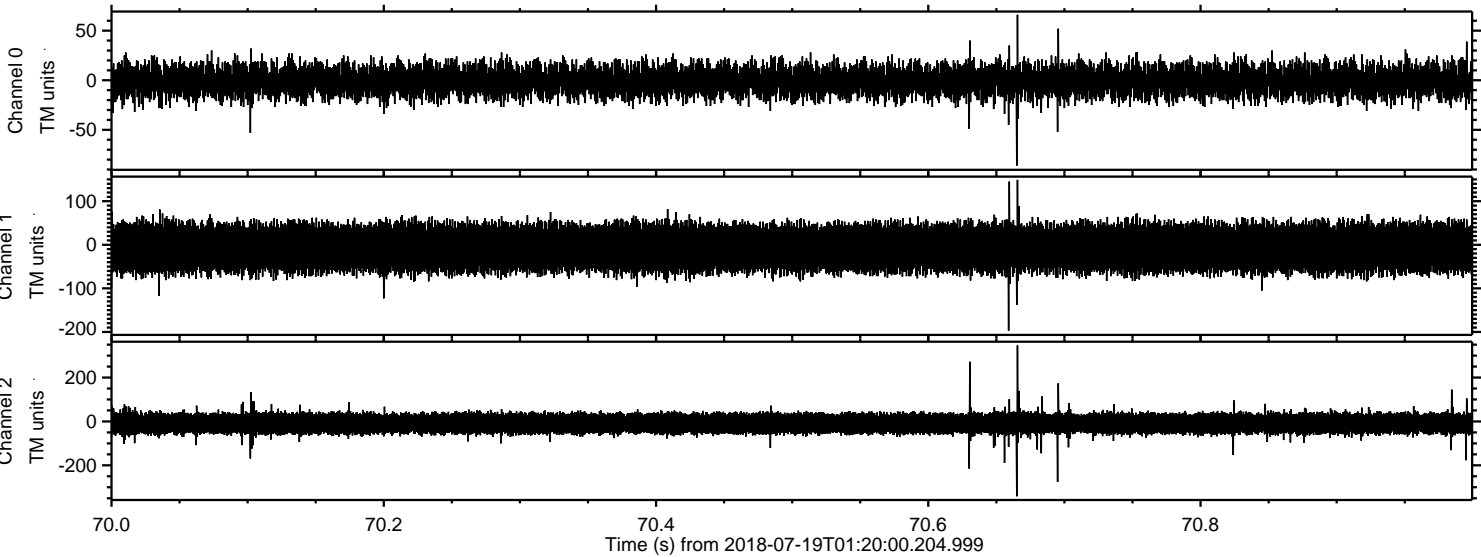
Processed Thu Jul 19 03:28:35 2018 by ELM ver.2012-10-06 from 001__elm20180719_011959__dat00.bin



Processed Thu Jul 19 03:28:35 2018 by ELM ver.2012-10-06 from 001__elm20180719_011959__dat00.bin



Processed Thu Jul 19 03:28:36 2018 by ELM ver.2012-10-06 from 001__elm20180719_011959__dat00.bin



Channel 0
mn: -86
mx: 66
 μ : -1.1
 σ : 9.2

Channel 1
mn: -197
mx: 149
 μ : -7.5
 σ : 28.0

Channel 2
mn: -341
mx: 346
 μ : -9.1
 σ : 24.8