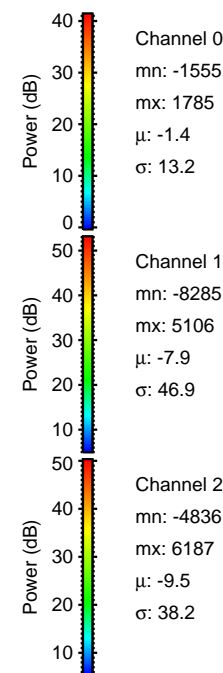
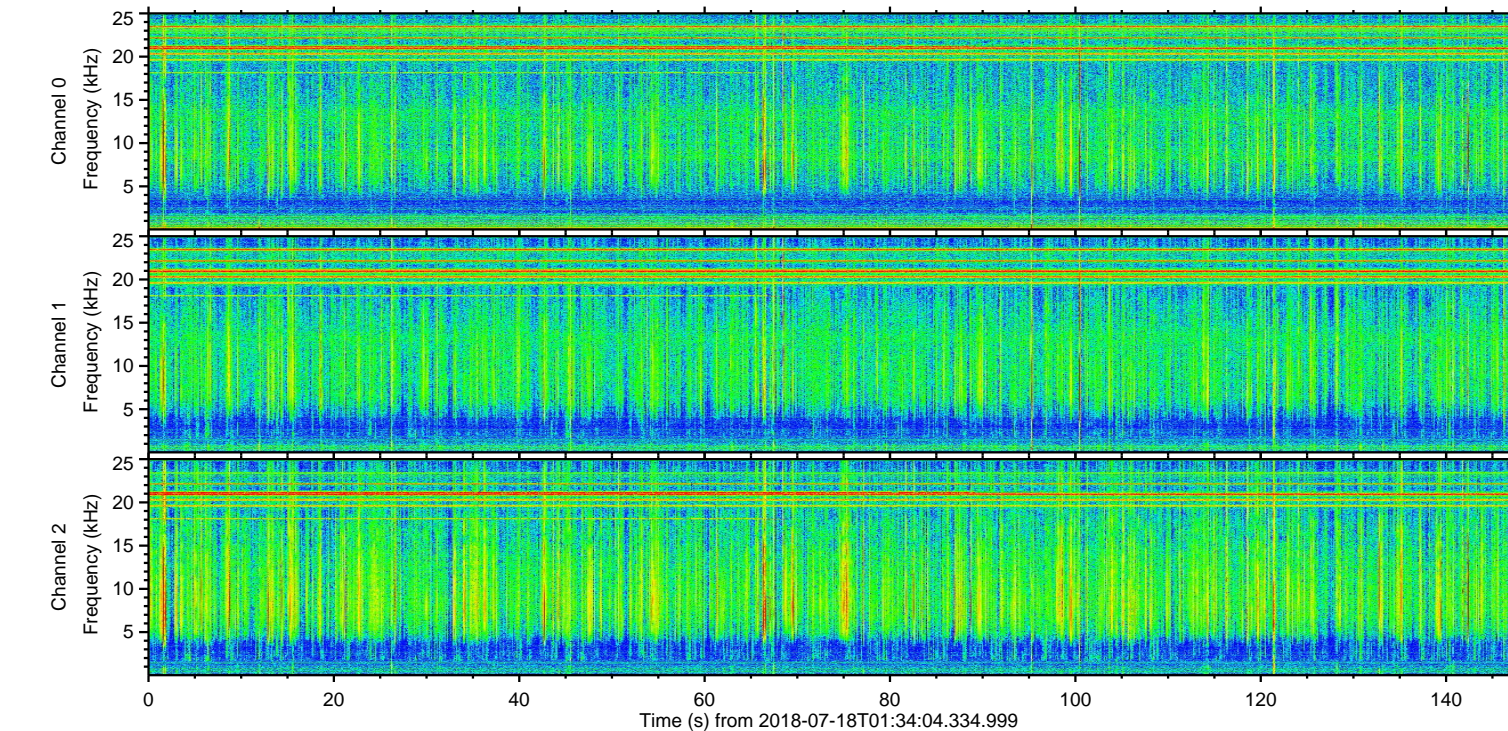
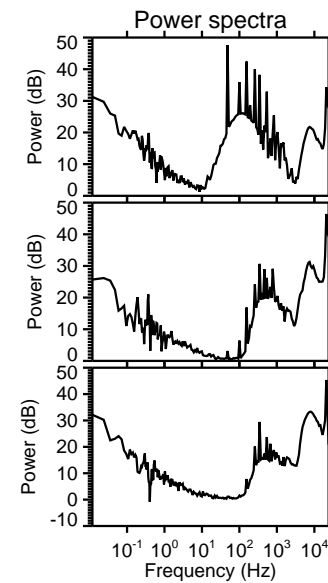
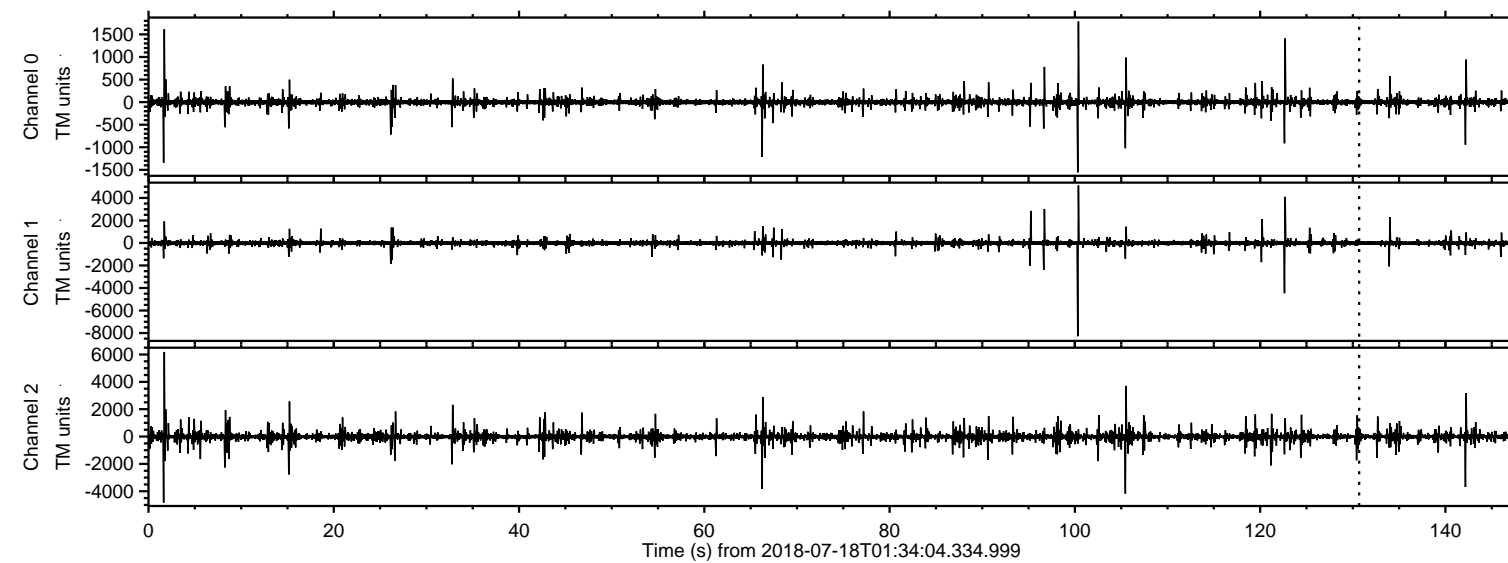


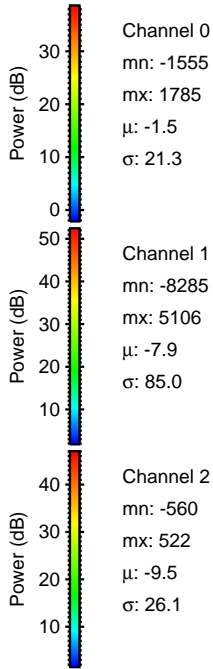
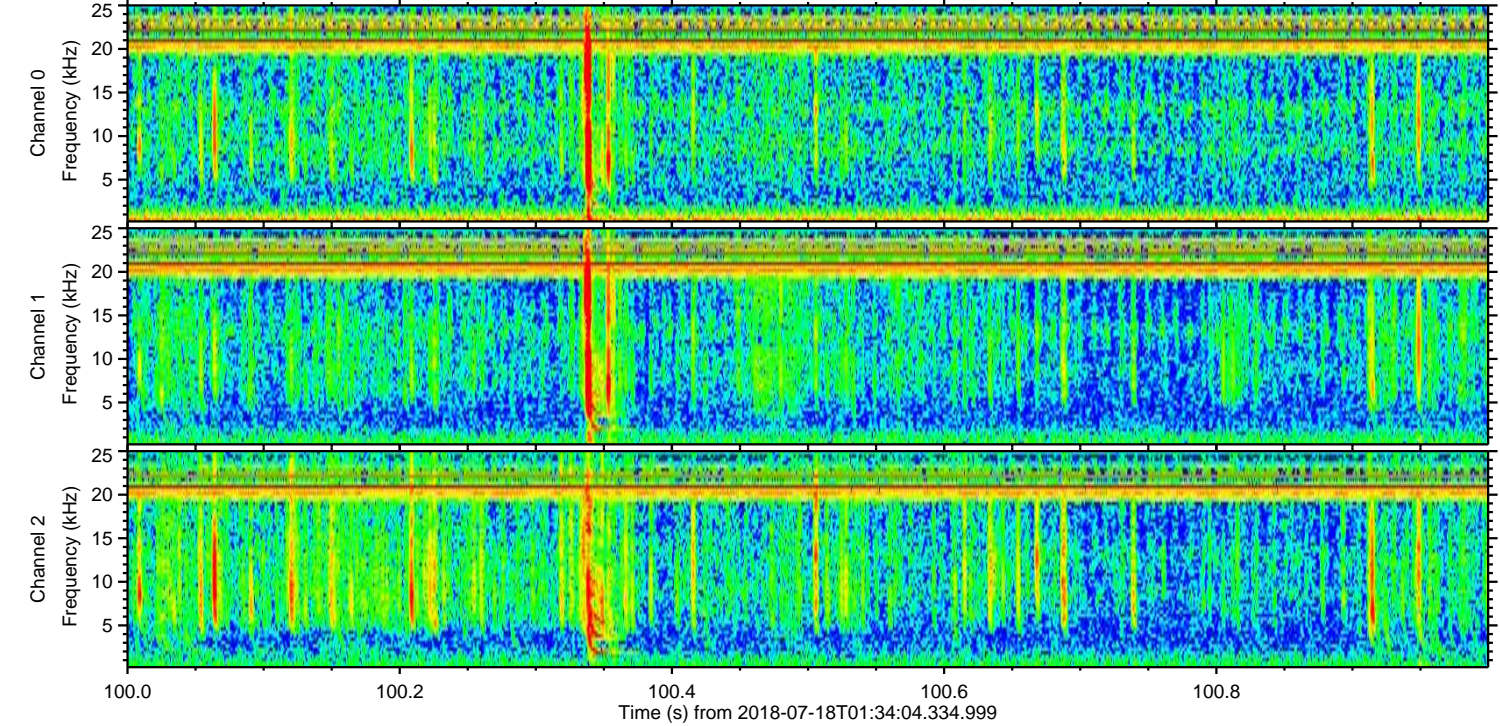
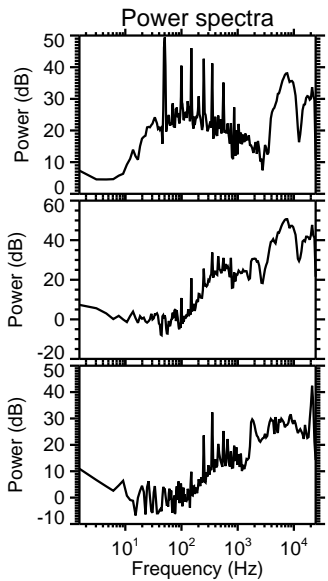
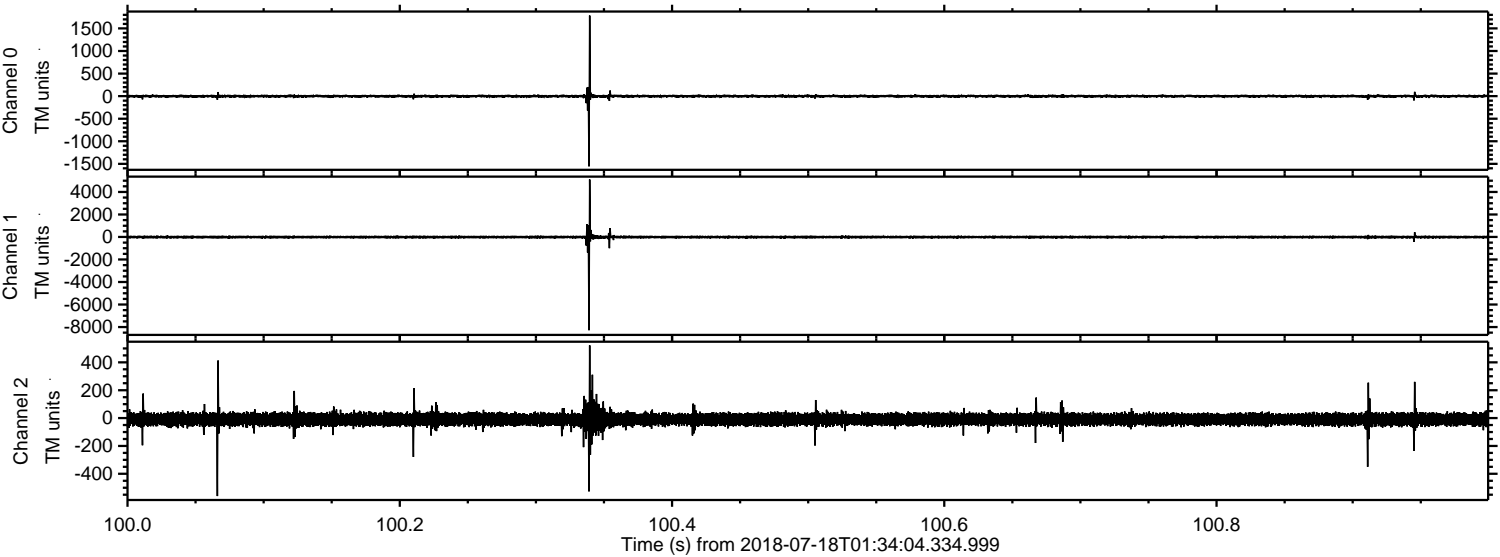
ELMAVAN 3D WAVEFORMS (Measured data sampled at 50 kHz) 50999 packets of 144 samples from 2018-07-18T01:34:04.334.999.

Processed Wed Jul 18 03:41:43 2018 by ELM ver.2012-10-06 from 001__elm20180718_013403__dat00.bin



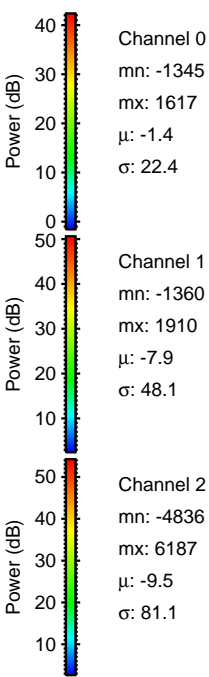
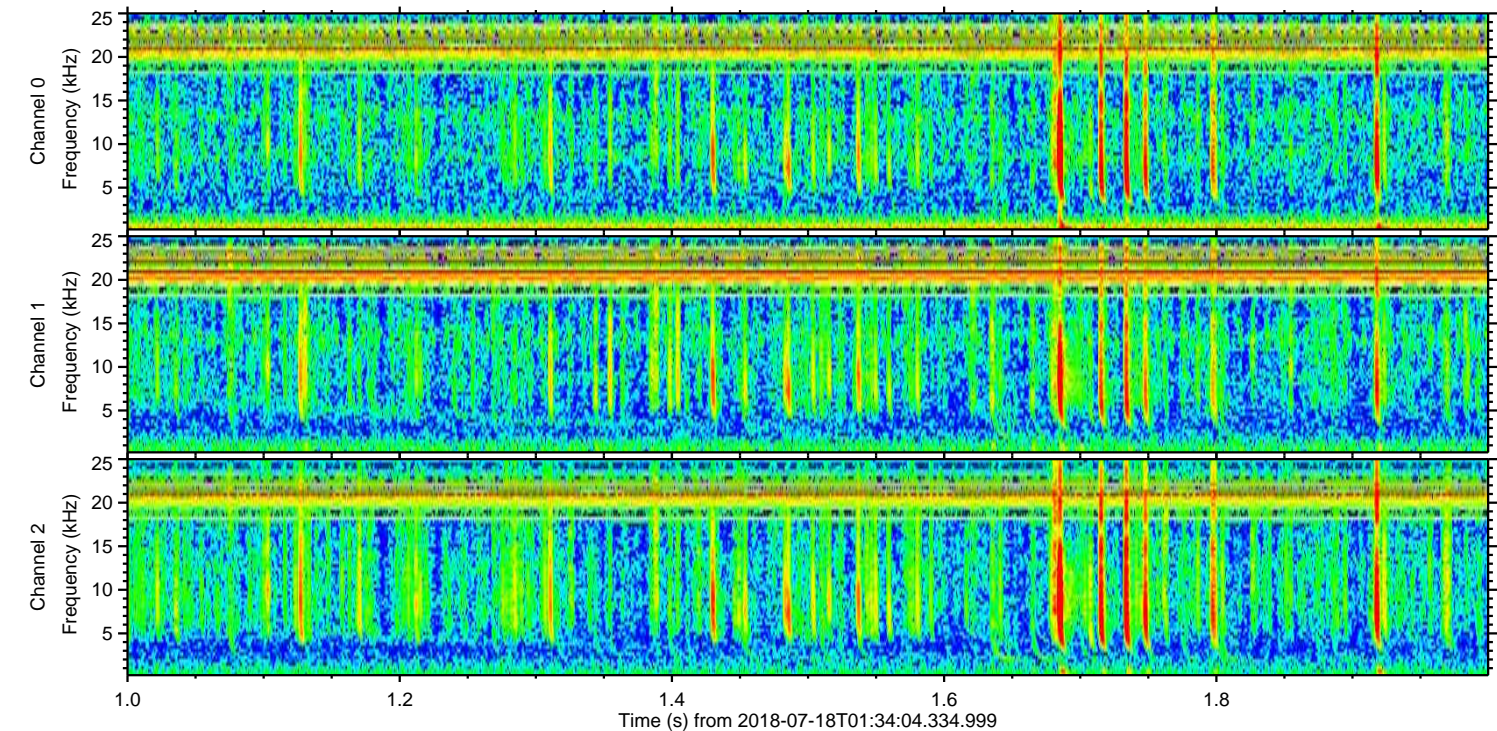
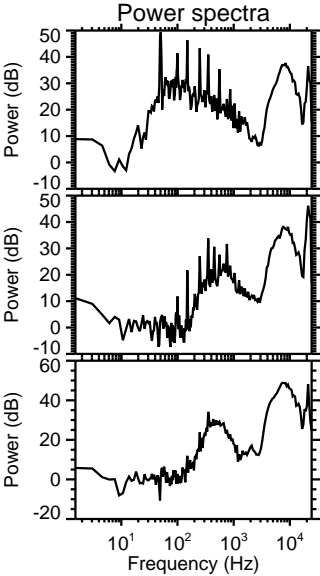
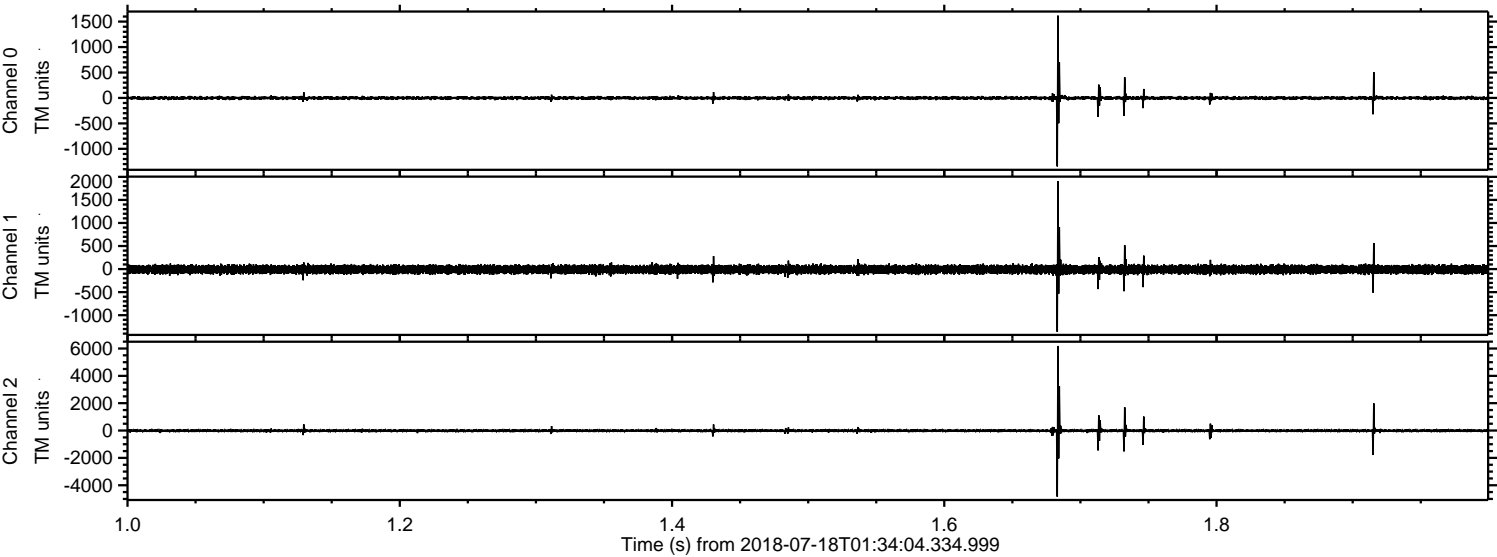
ELMAVAN 3D WAVEFORMS (Measured data sampled at 50 kHz) 50999 packets of 144 samples from 2018-07-18T01:34:04.334.999. Part 101/147

Processed Wed Jul 18 03:41:49 2018 by ELM ver.2012-10-06 from 001__elm20180718_013403__dat00.bin



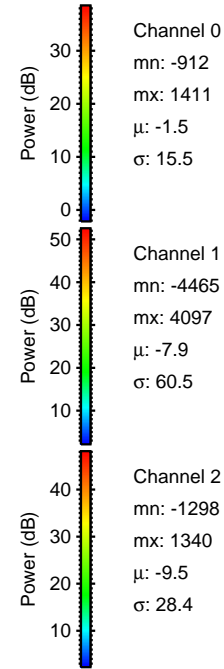
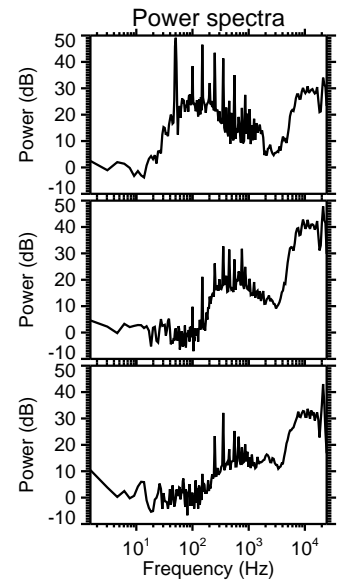
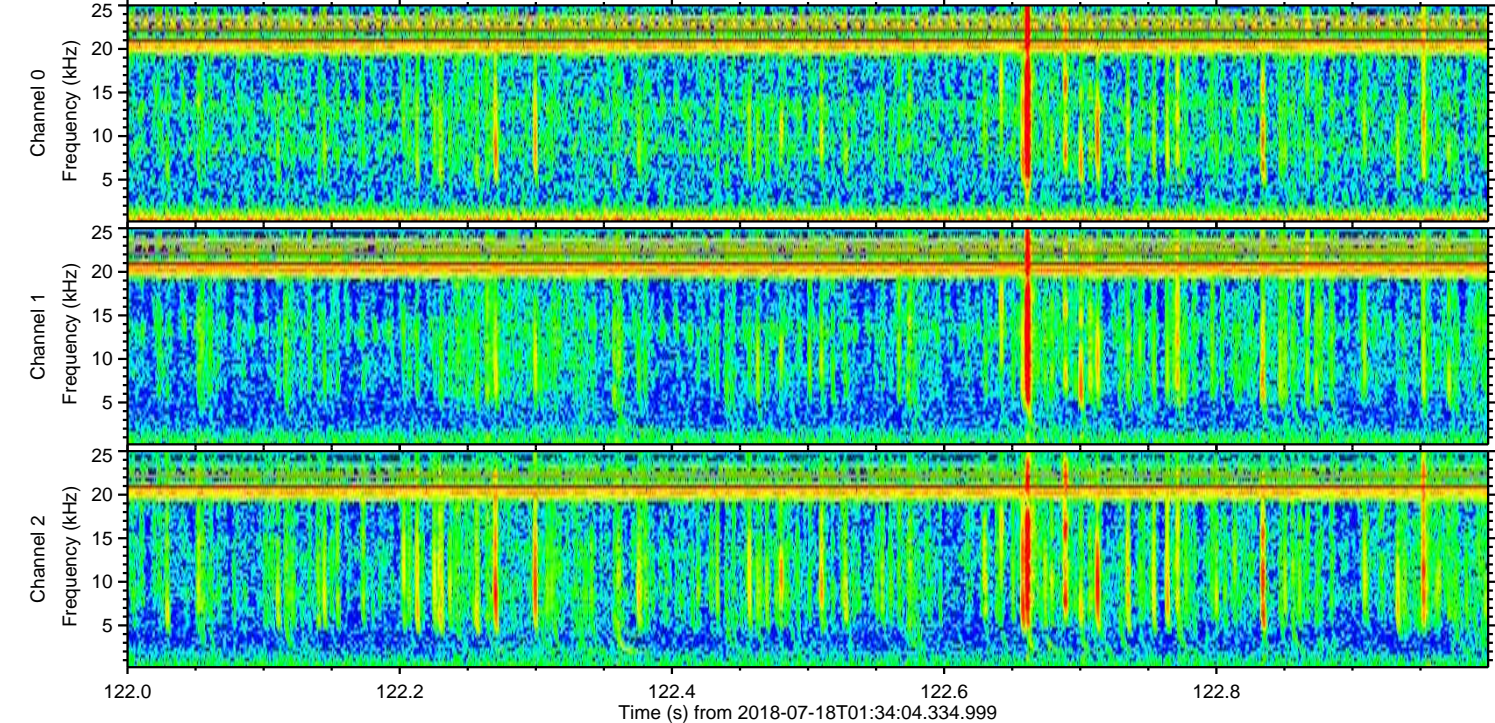
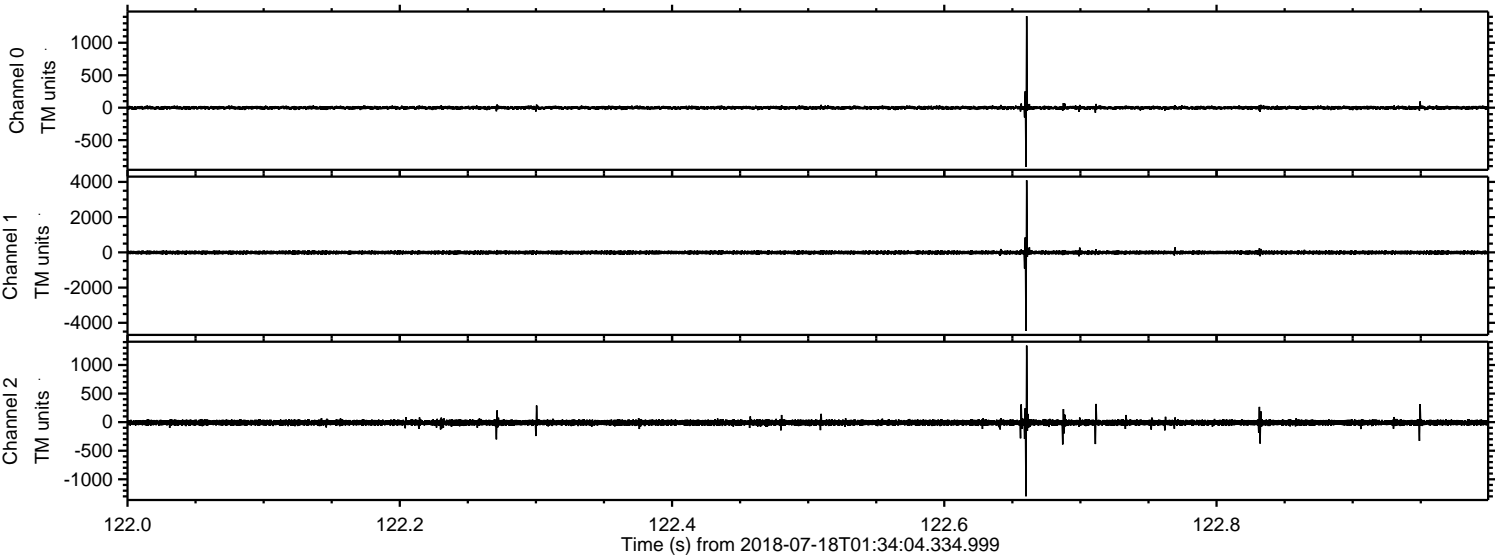
ELMAVAN 3D WAVEFORMS (Measured data sampled at 50 kHz) 50999 packets of 144 samples from 2018-07-18T01:34:04.334.999. Part 2/147

Processed Wed Jul 18 03:41:49 2018 by ELM ver.2012-10-06 from 001__elm20180718_013403__dat00.bin



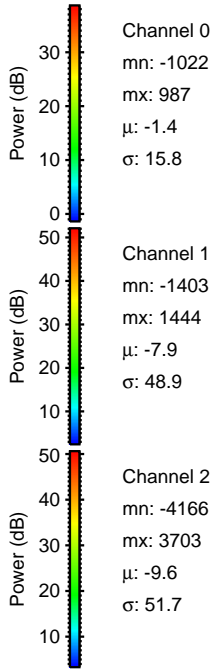
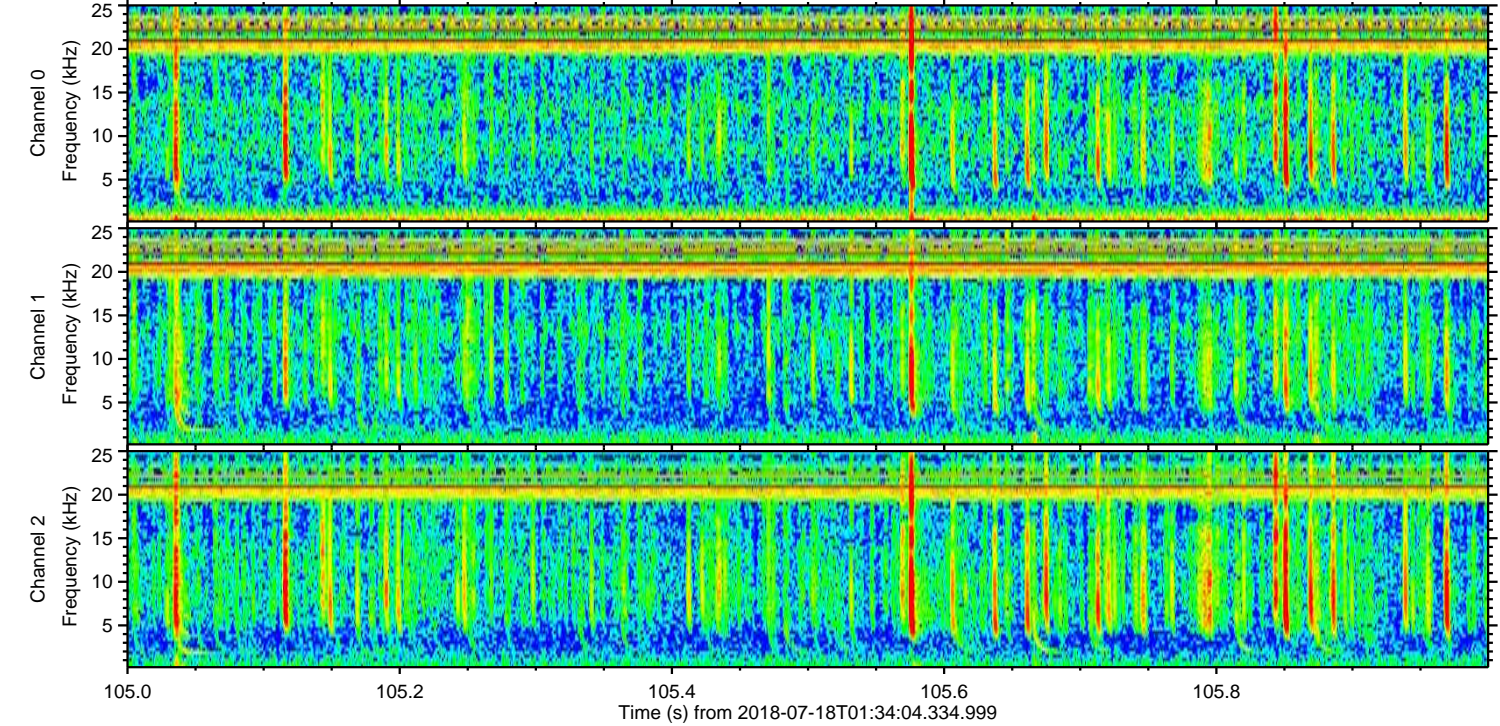
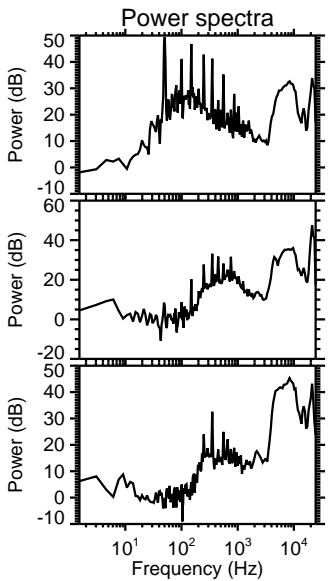
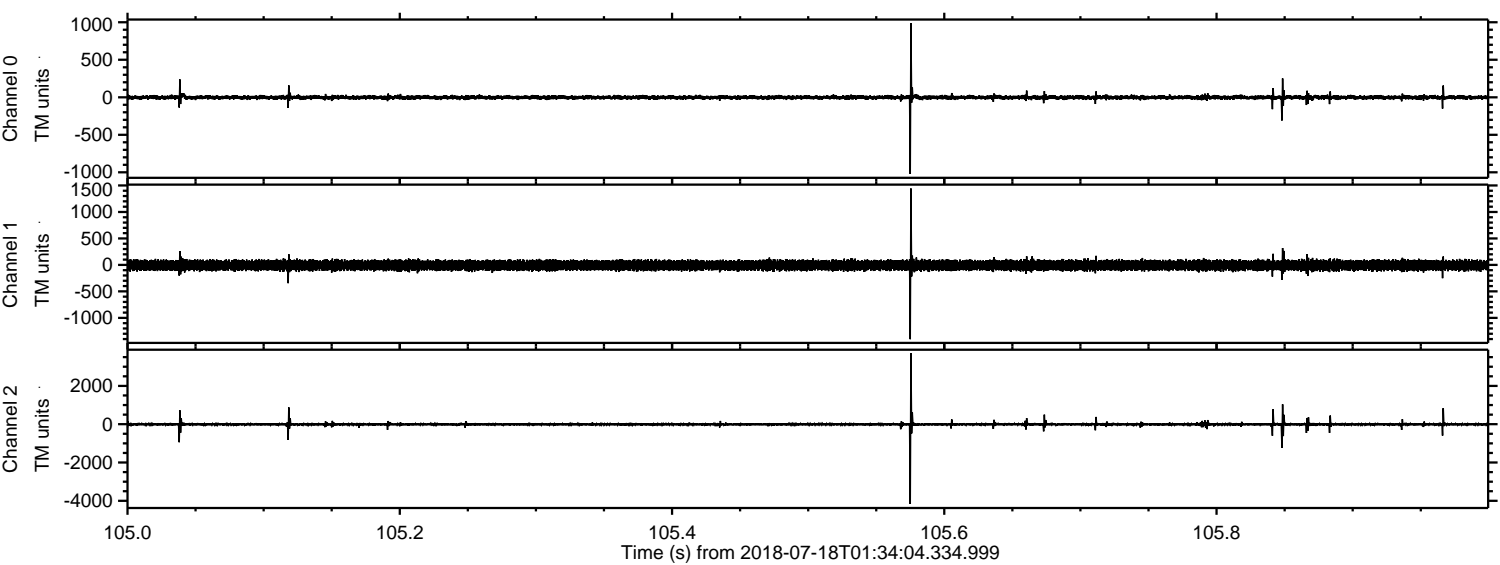
ELMAVAN 3D WAVEFORMS (Measured data sampled at 50 kHz) 50999 packets of 144 samples from 2018-07-18T01:34:04.334.999. Part 123/147

Processed Wed Jul 18 03:41:50 2018 by ELM ver.2012-10-06 from 001__elm20180718_013403__dat00.bin

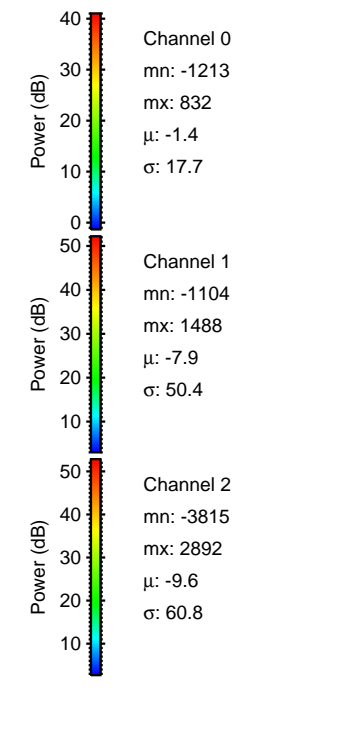
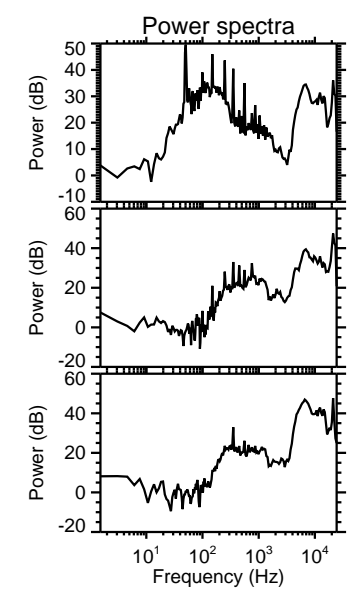
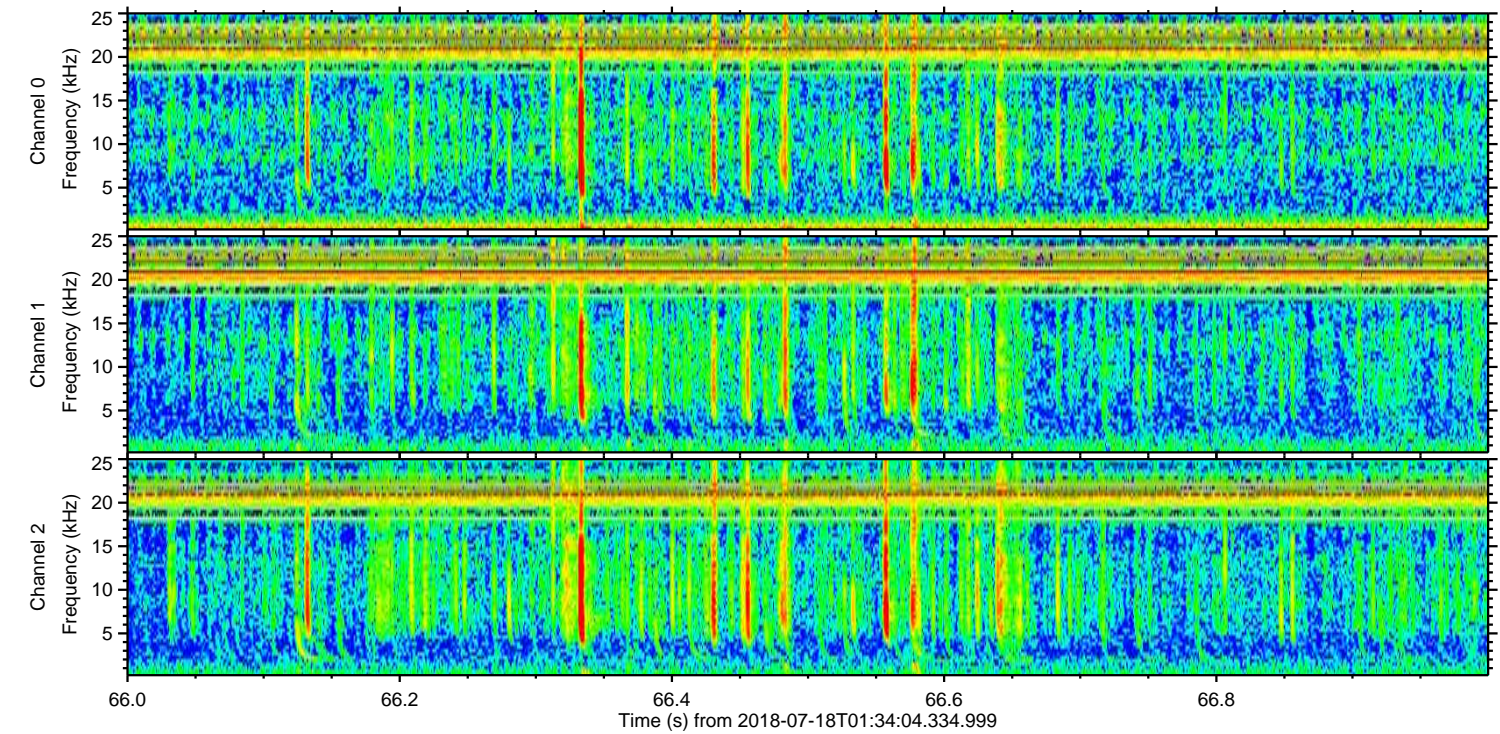
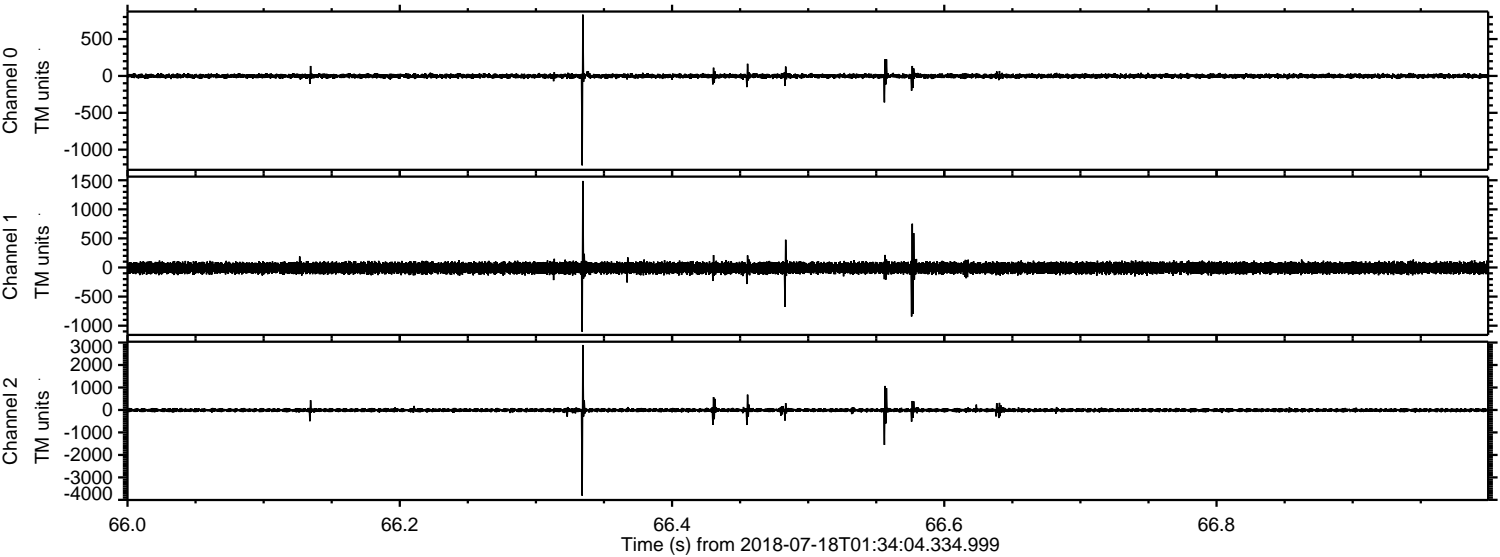


ELMAVAN 3D WAVEFORMS (Measured data sampled at 50 kHz) 50999 packets of 144 samples from 2018-07-18T01:34:04.334.999. Part 106/147

Processed Wed Jul 18 03:41:51 2018 by ELM ver.2012-10-06 from 001__elm20180718_013403__dat00.bin

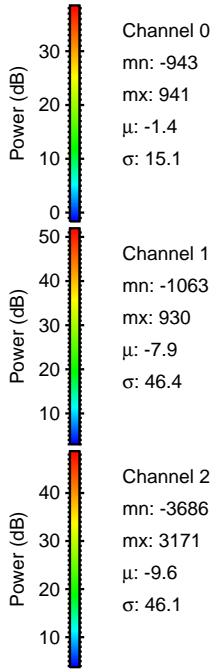
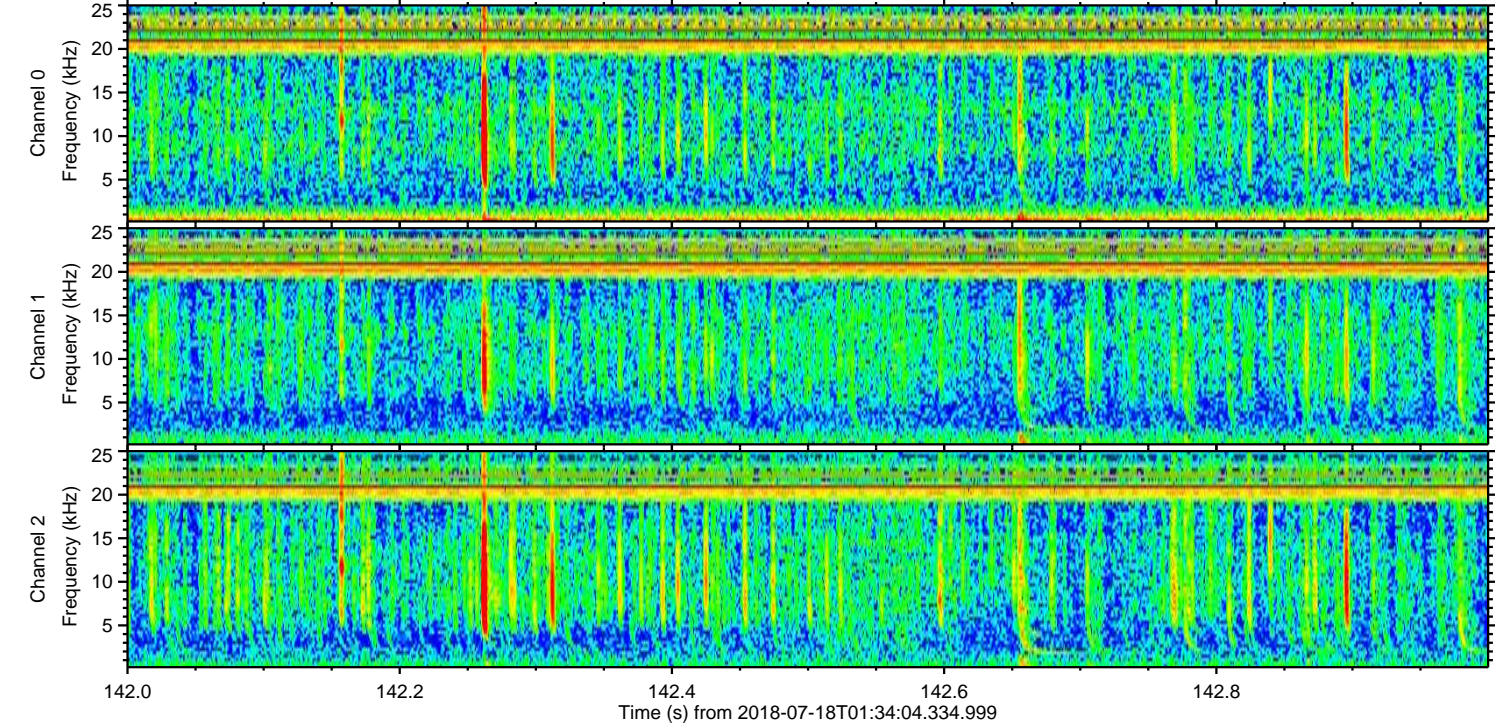
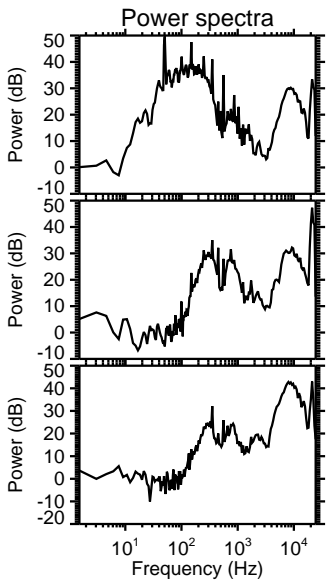
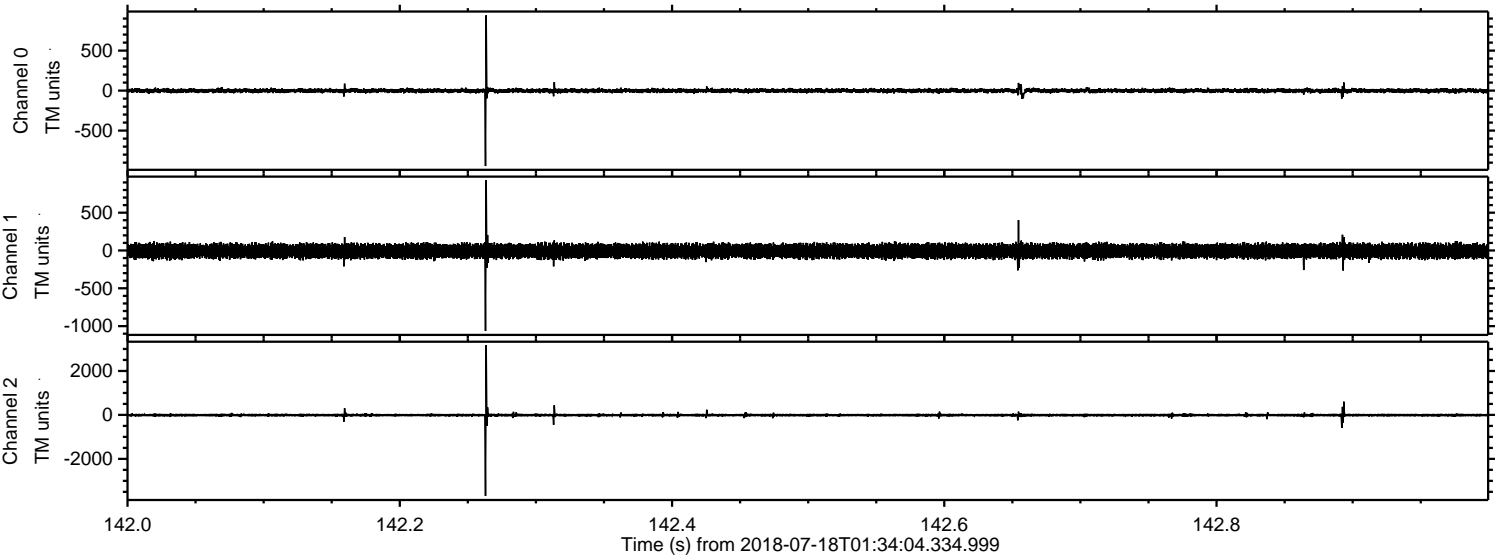


Processed Wed Jul 18 03:41:51 2018 by ELM ver.2012-10-06 from 001__elm20180718_013403__dat00.bin



ELMAVAN 3D WAVEFORMS (Measured data sampled at 50 kHz) 50999 packets of 144 samples from 2018-07-18T01:34:04.334.999. Part 143/147

Processed Wed Jul 18 03:41:52 2018 by ELM ver.2012-10-06 from 001__elm20180718_013403__dat00.bin

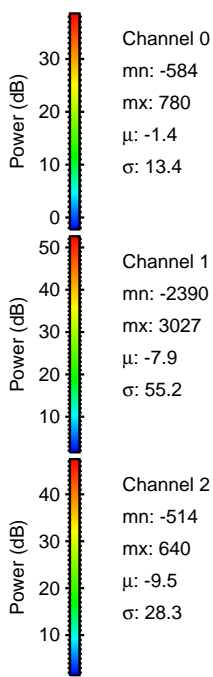
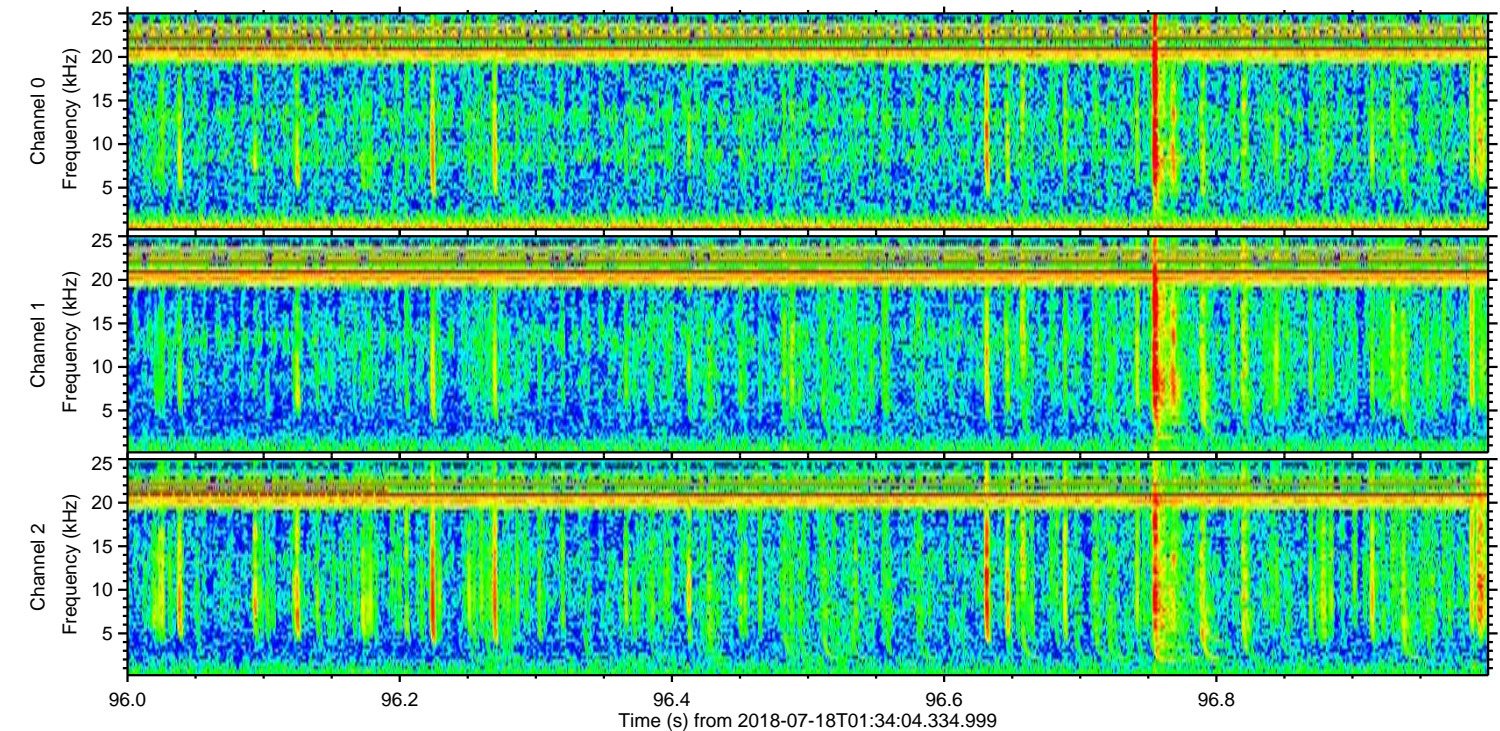
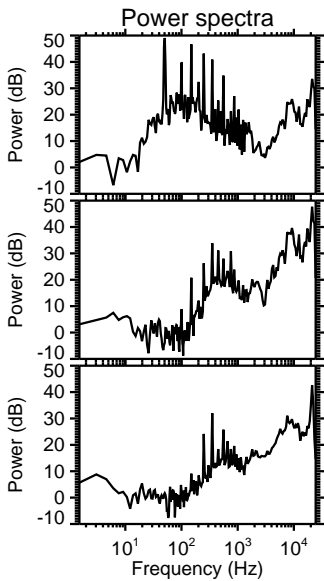
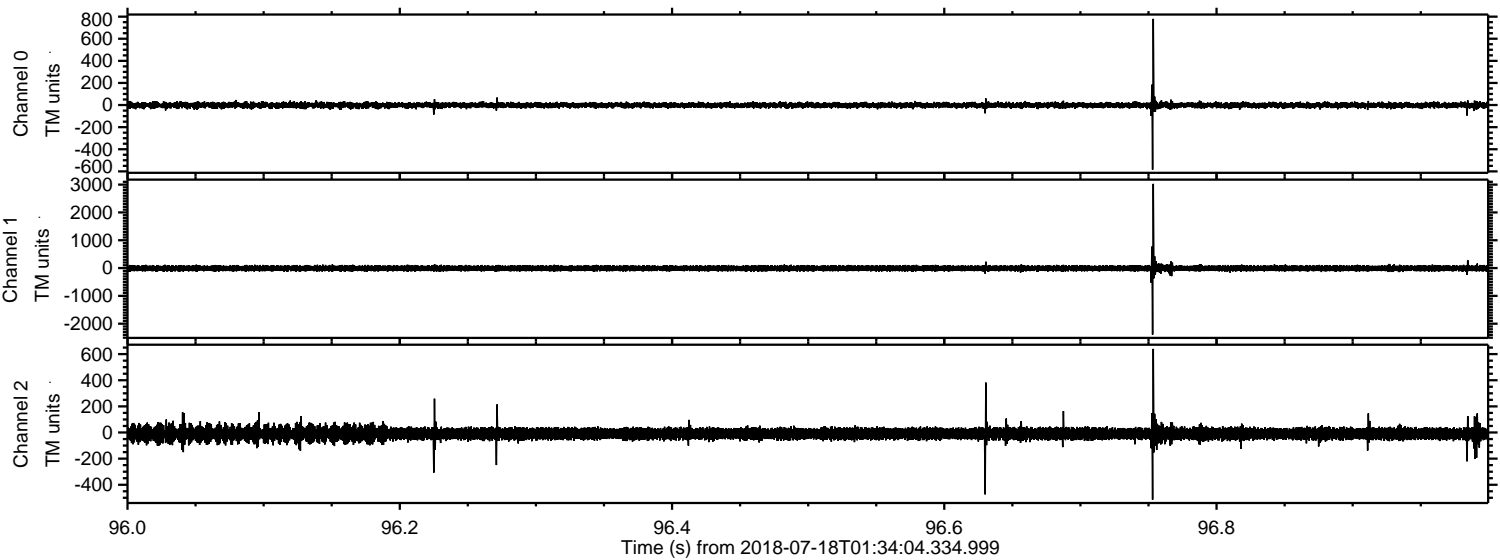


Channel 0
mn: -943
mx: 941
 μ : -1.4
 σ : 15.1

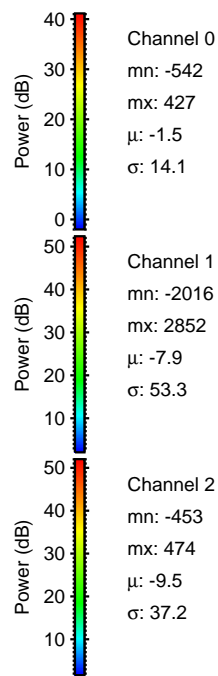
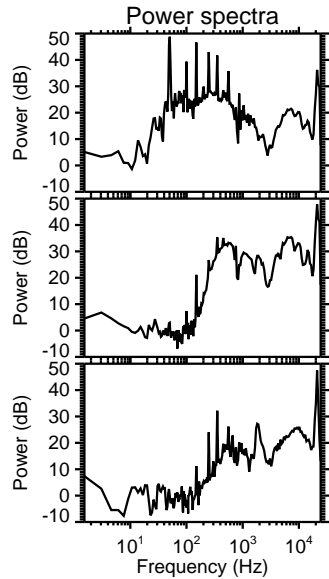
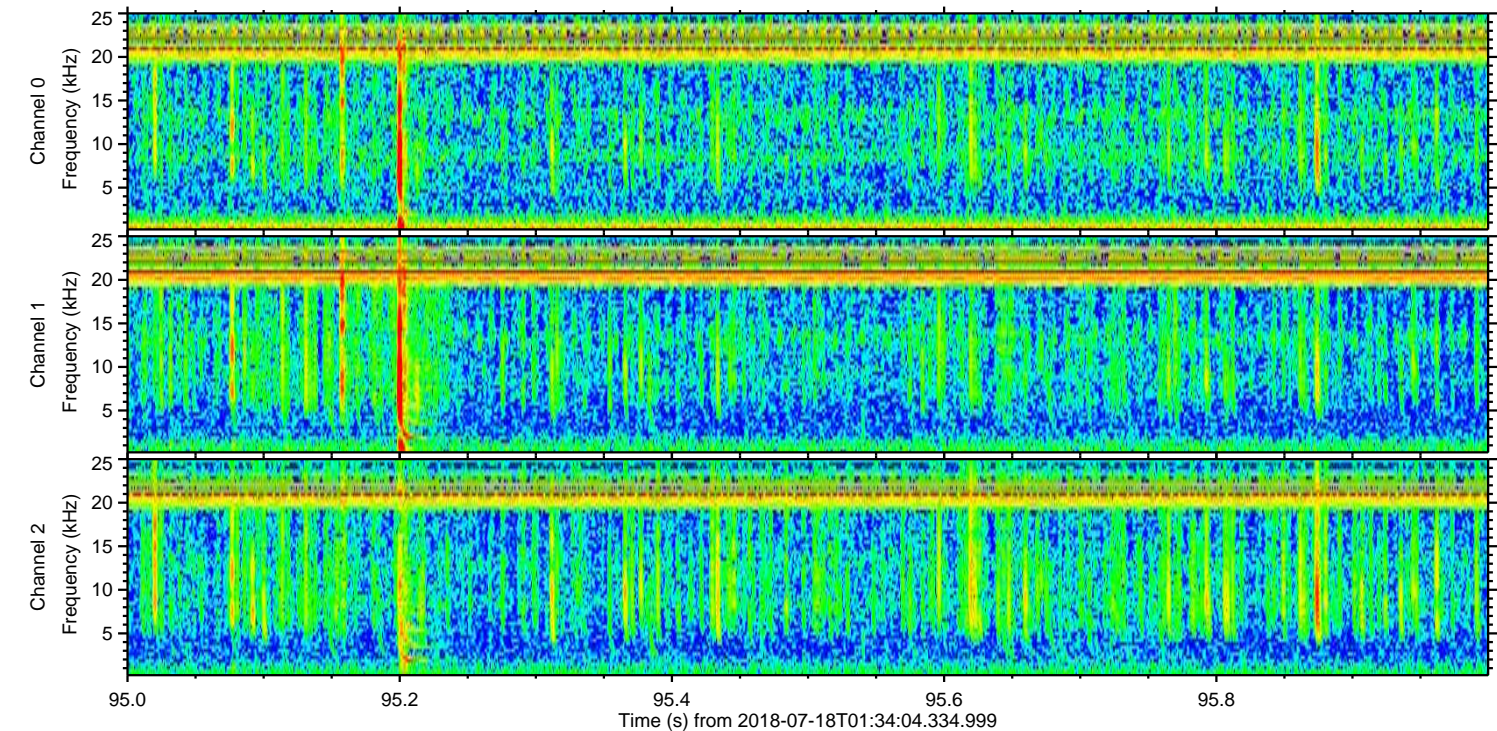
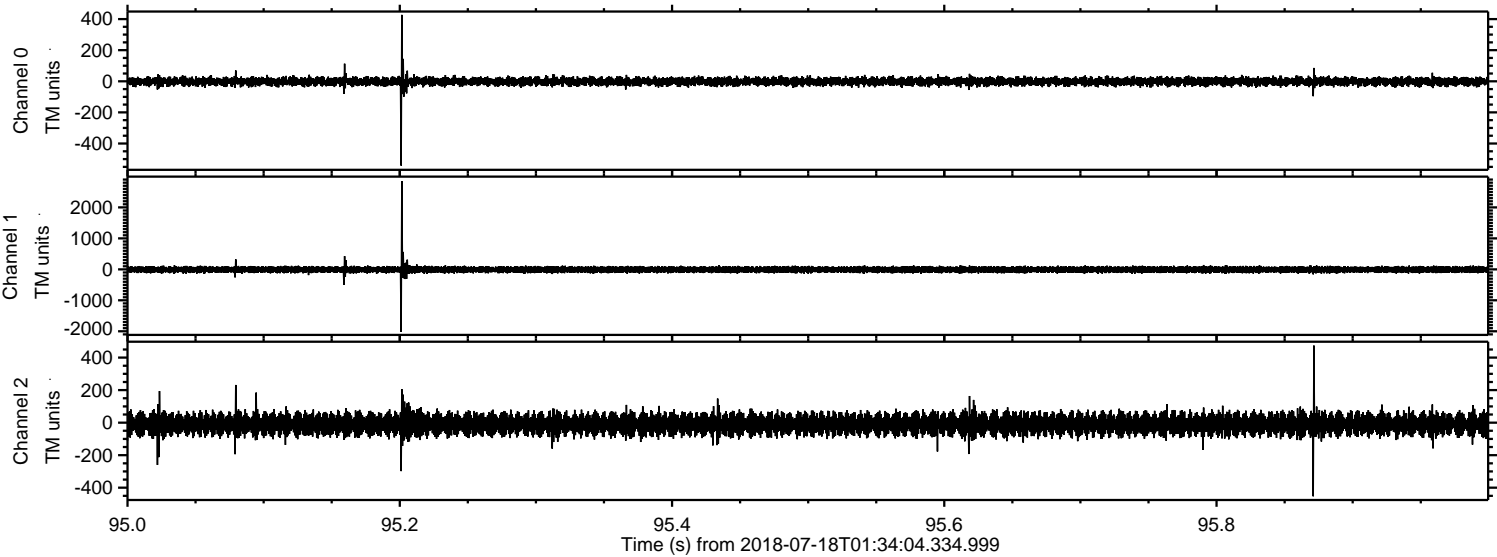
Channel 1
mn: -1063
mx: 930
 μ : -7.9
 σ : 46.4

Channel 2
mn: -3686
mx: 3171
 μ : -9.6
 σ : 46.1

Processed Wed Jul 18 03:41:53 2018 by ELM ver.2012-10-06 from 001__elm20180718_013403__dat00.bin



Processed Wed Jul 18 03:41:53 2018 by ELM ver.2012-10-06 from 001__elm20180718_013403__dat00.bin



Processed Wed Jul 18 03:41:54 2018 by ELM ver.2012-10-06 from 001__elm20180718_013403__dat00.bin

