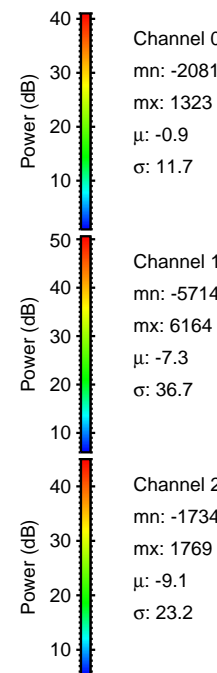
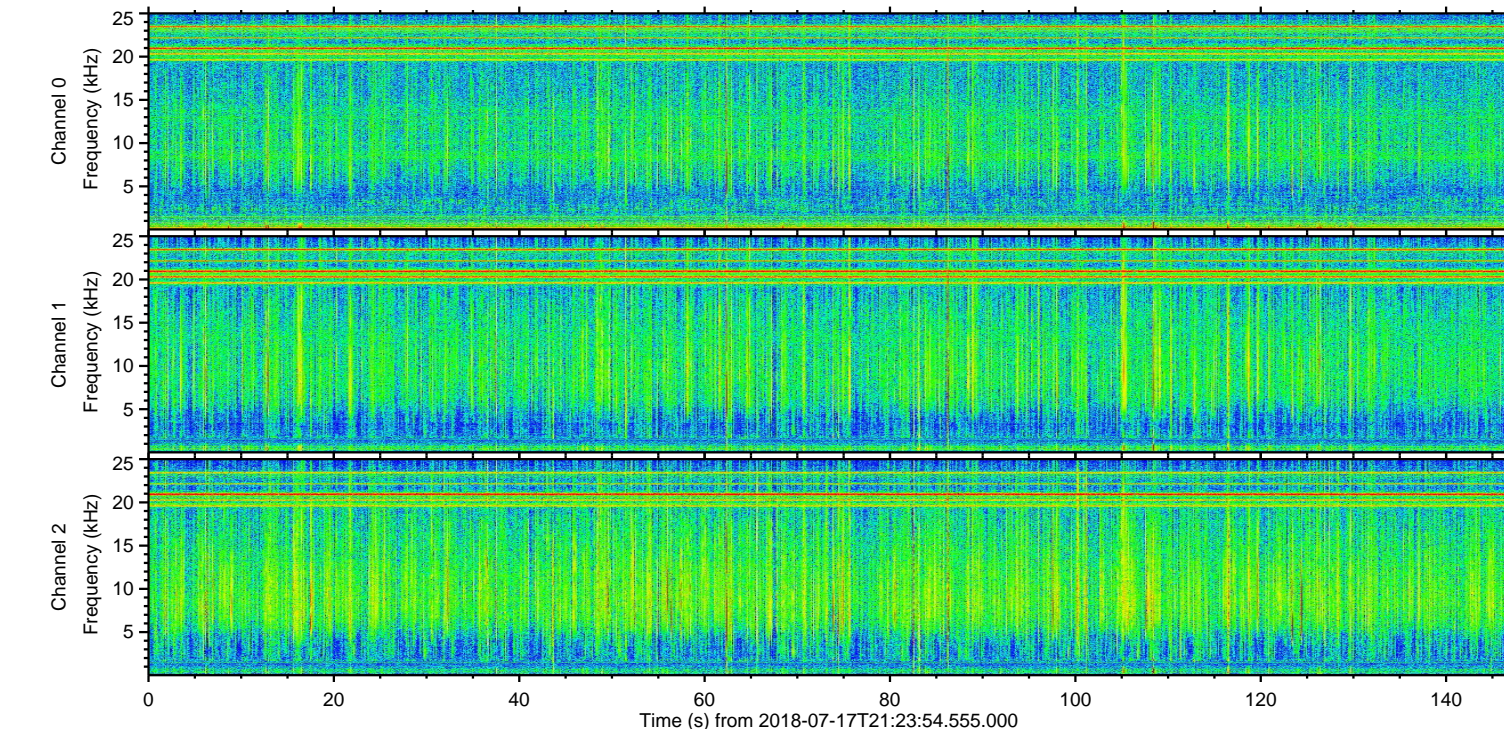
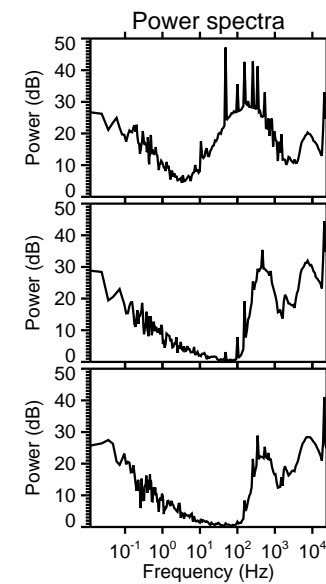
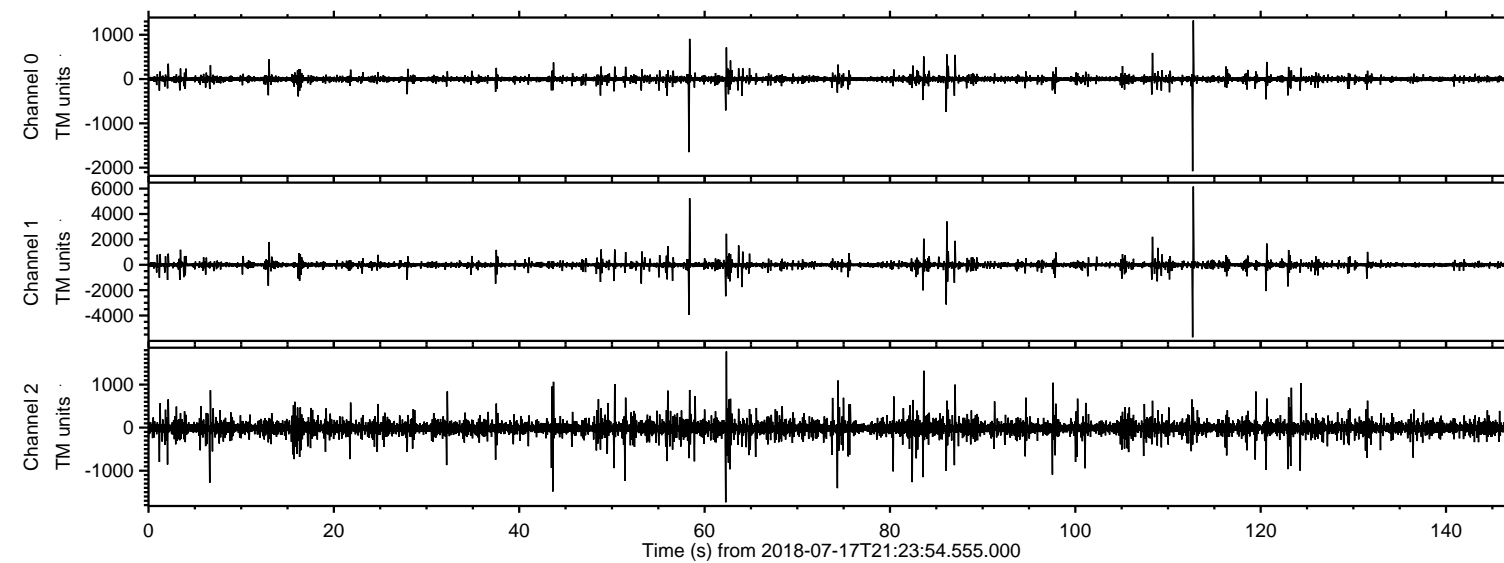


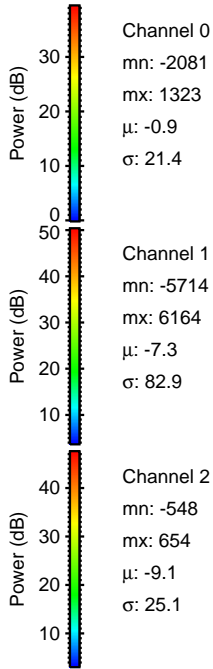
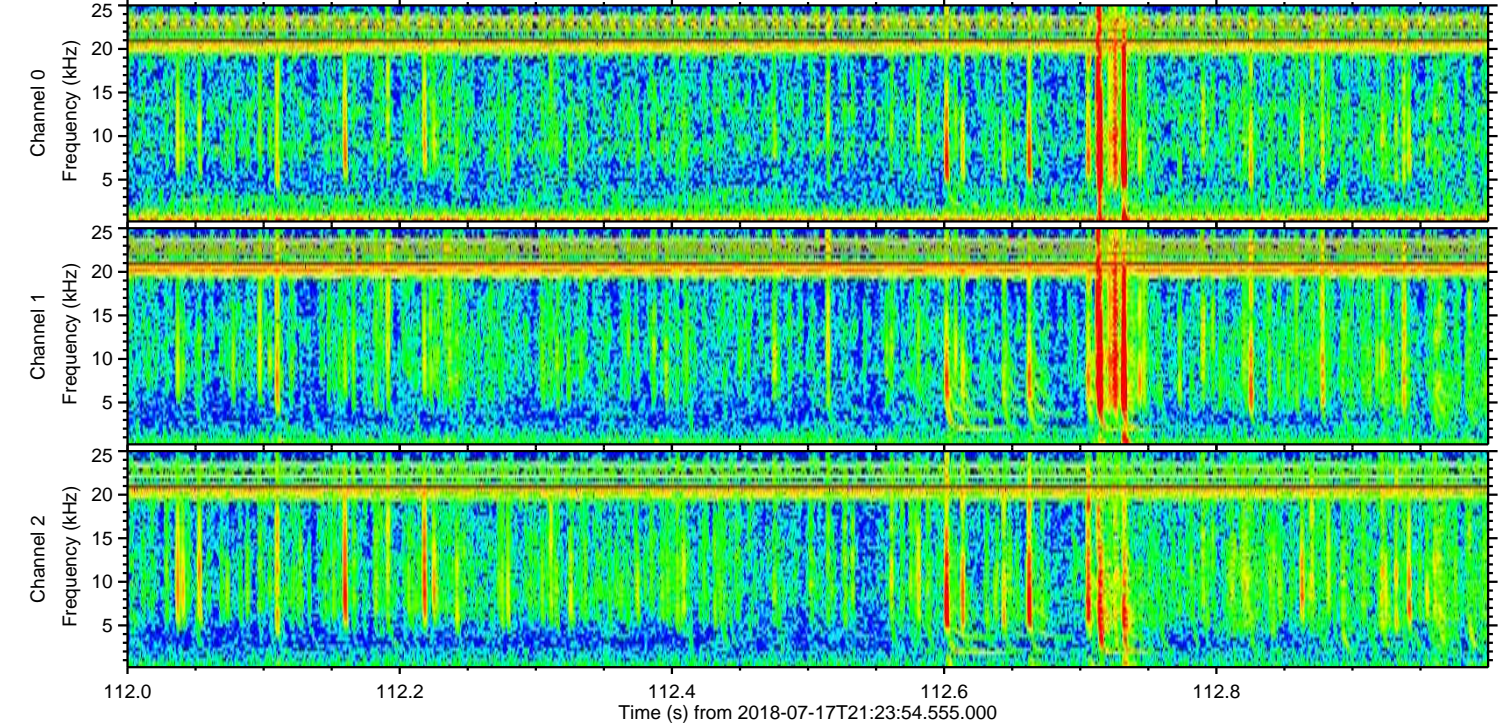
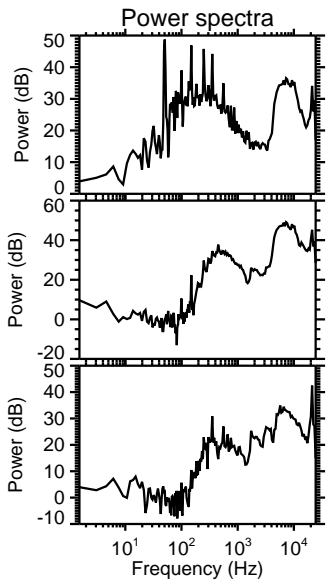
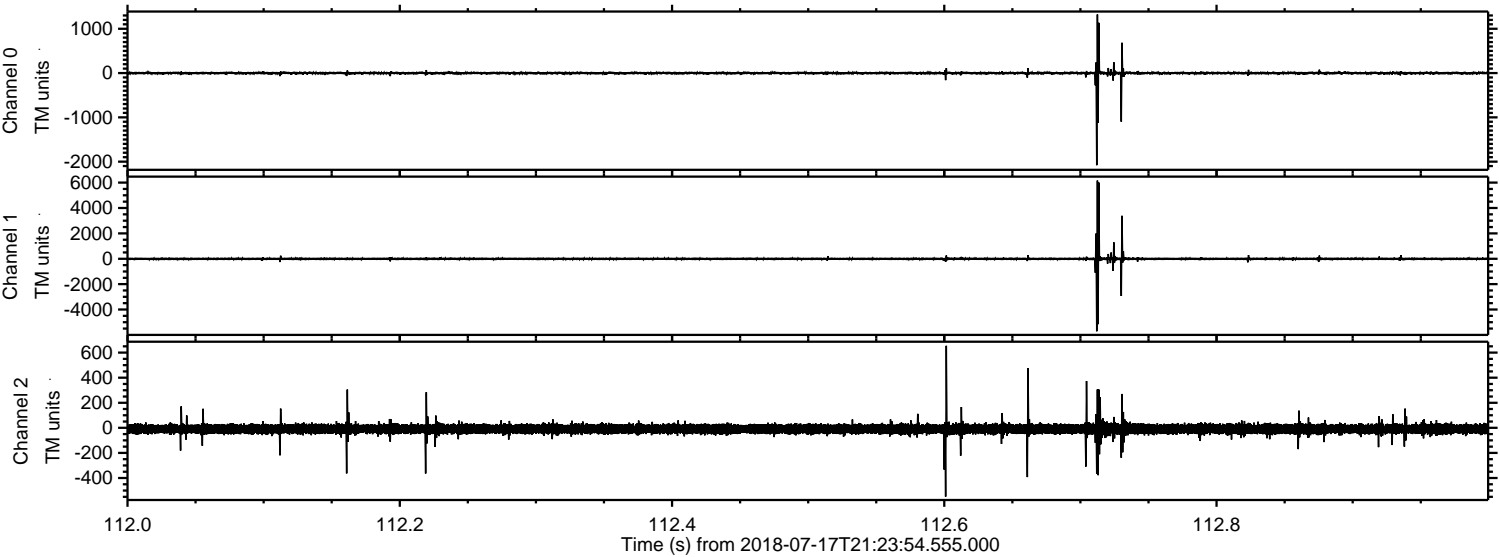
ELMAVAN 3D WAVEFORMS (Measured data sampled at 50 kHz) 51000 packets of 144 samples from 2018-07-17T21:23:54.555.000.

Processed Tue Jul 17 23:32:12 2018 by ELM ver.2012-10-06 from 001__elm20180717_212353__dat00.bin

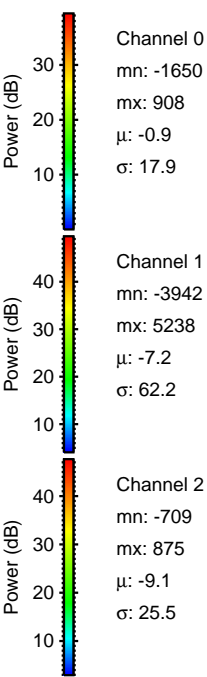
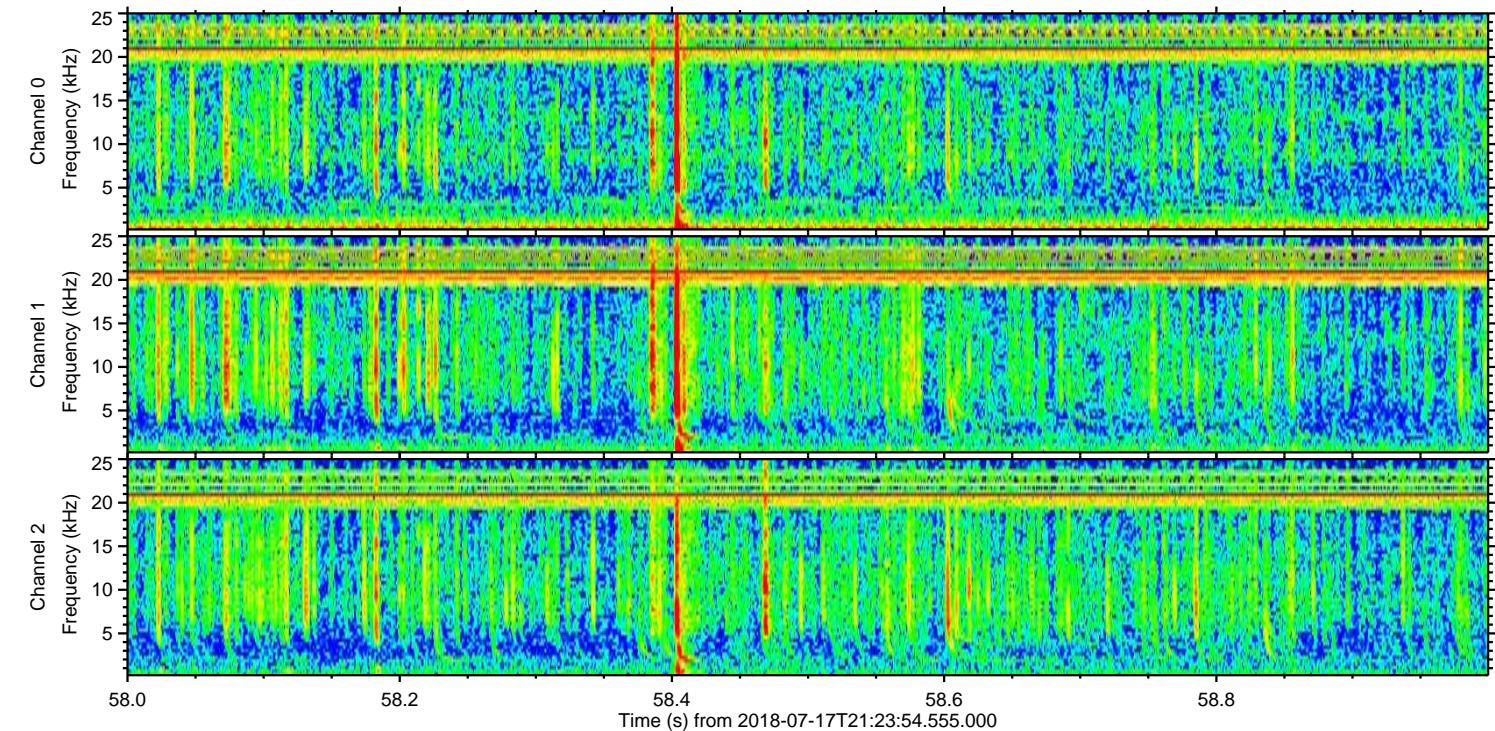
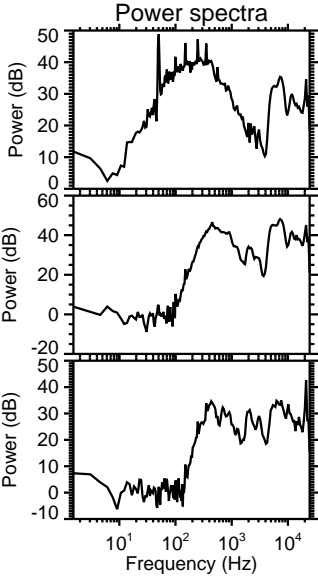
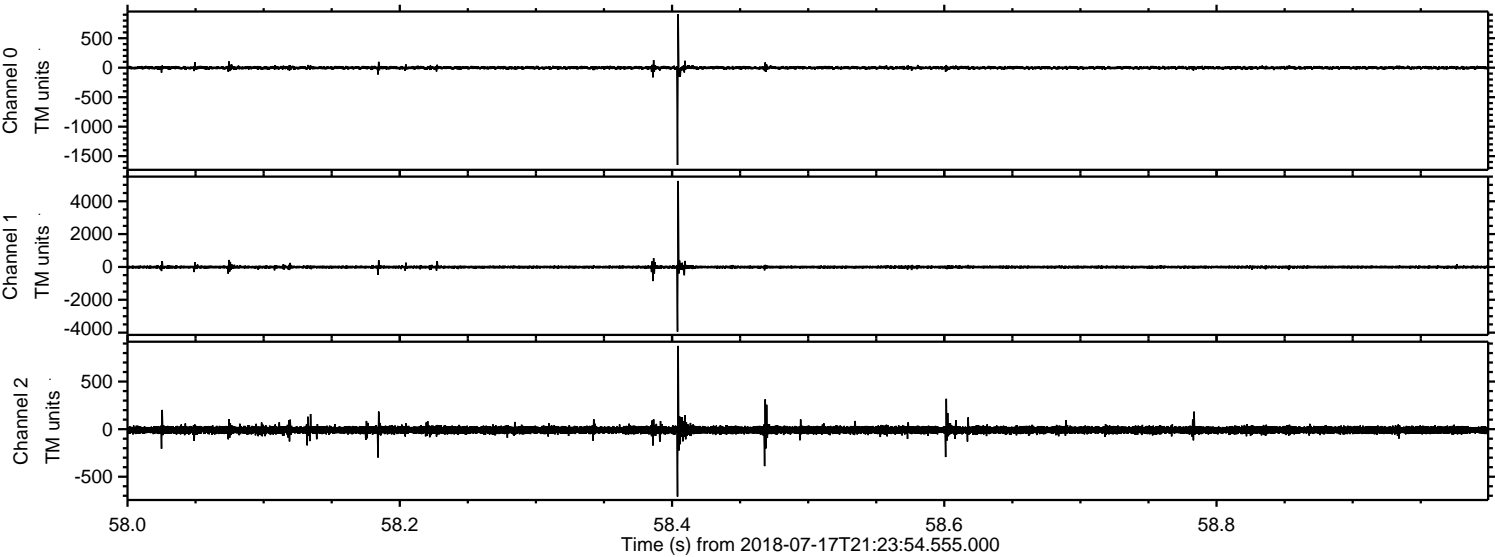


ELMAVAN 3D WAVEFORMS (Measured data sampled at 50 kHz) 51000 packets of 144 samples from 2018-07-17T21:23:54.555.000. Part 113/147

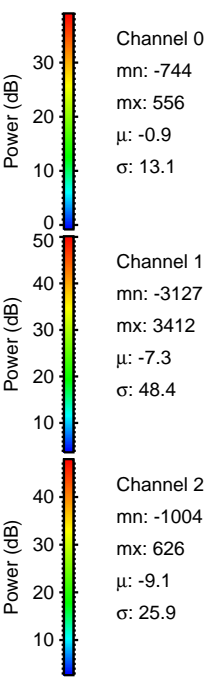
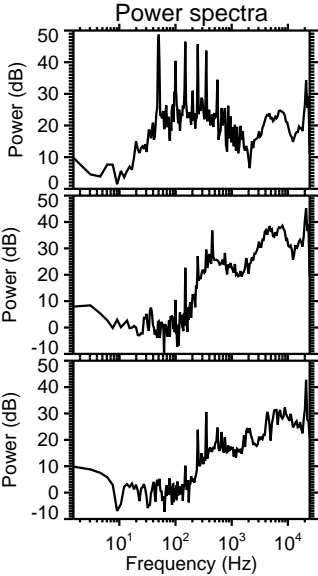
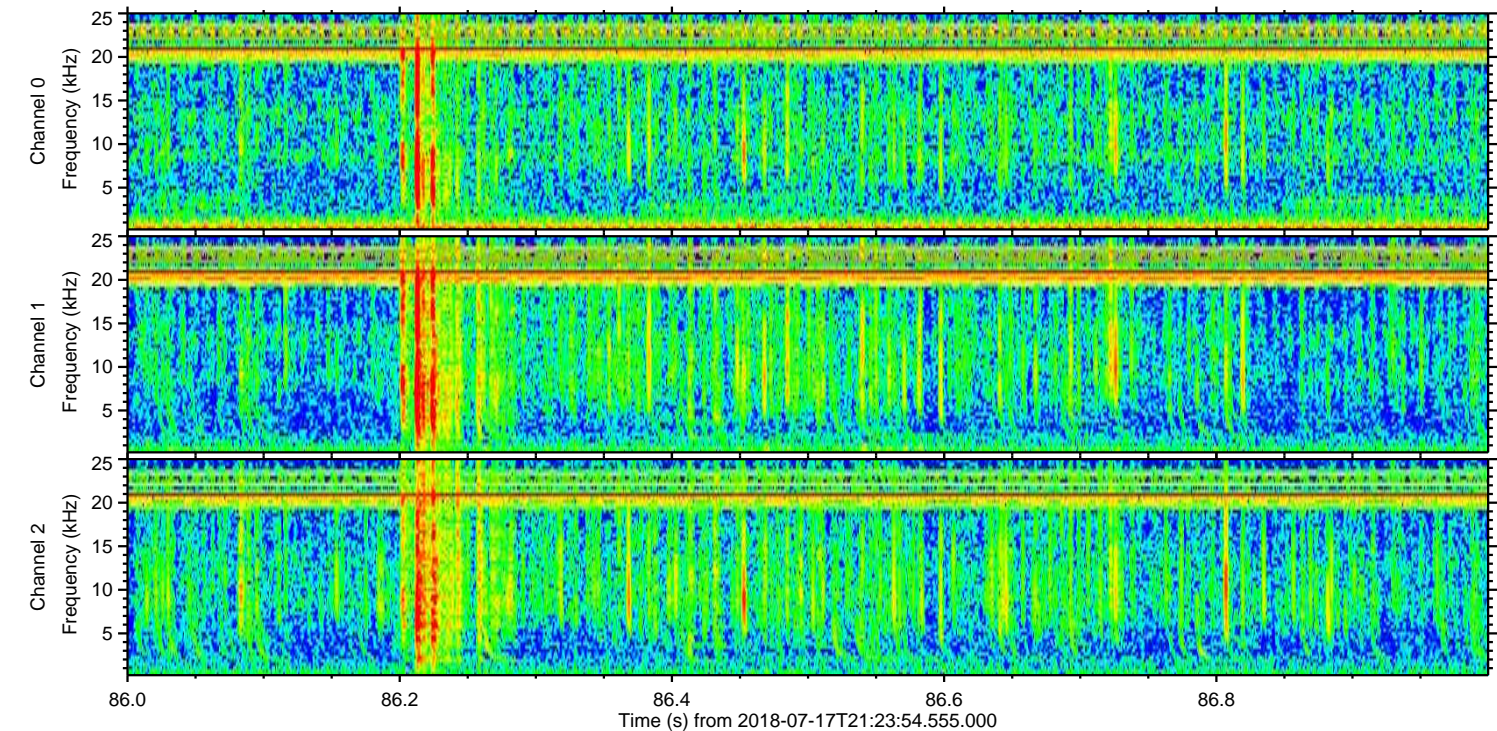
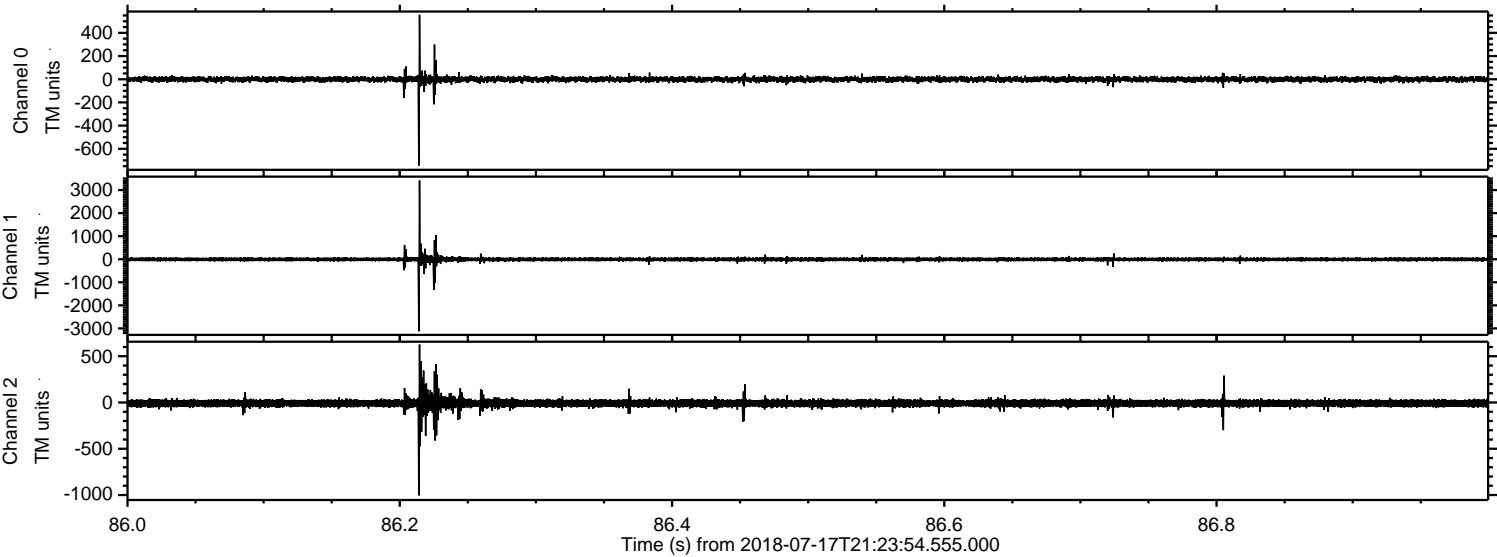
Processed Tue Jul 17 23:32:18 2018 by ELM ver.2012-10-06 from 001__elm20180717_212353__dat00.bin



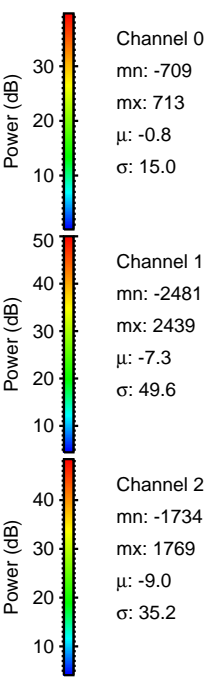
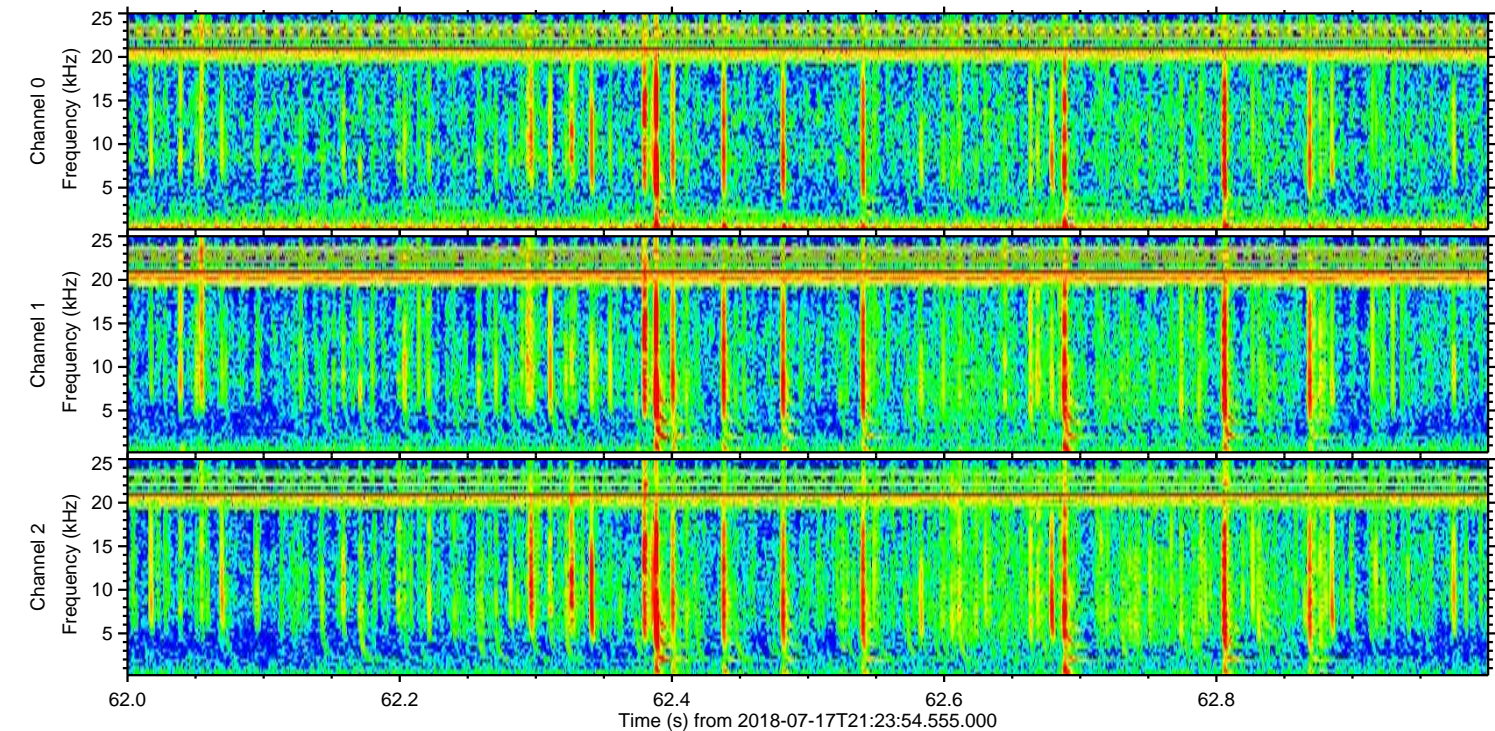
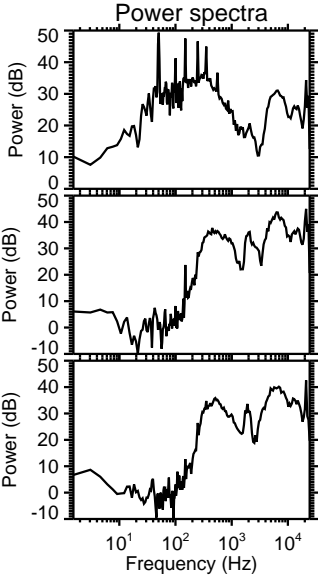
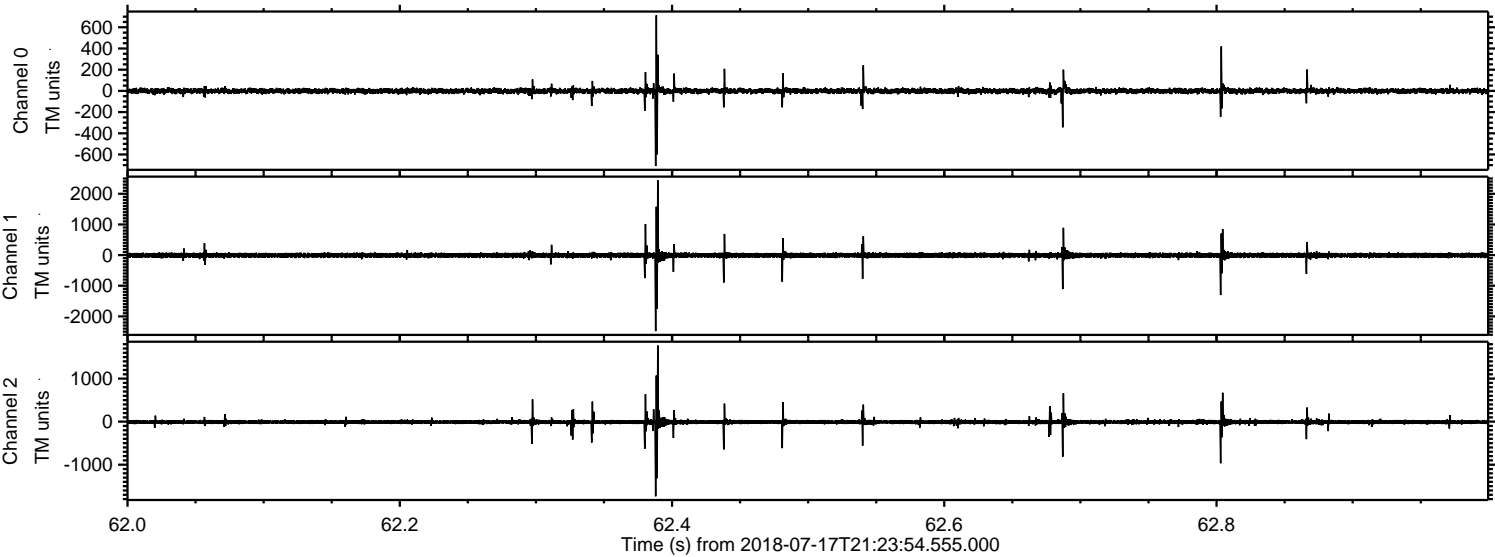
Processed Tue Jul 17 23:32:18 2018 by ELM ver.2012-10-06 from 001__elm20180717_212353__dat00.bin



Processed Tue Jul 17 23:32:19 2018 by ELM ver.2012-10-06 from 001__elm20180717_212353__dat00.bin

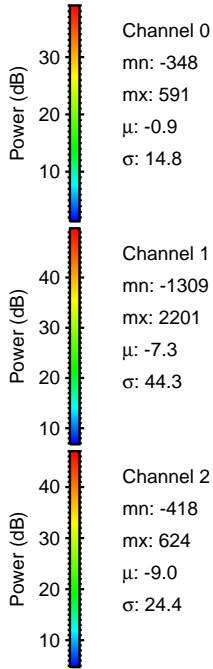
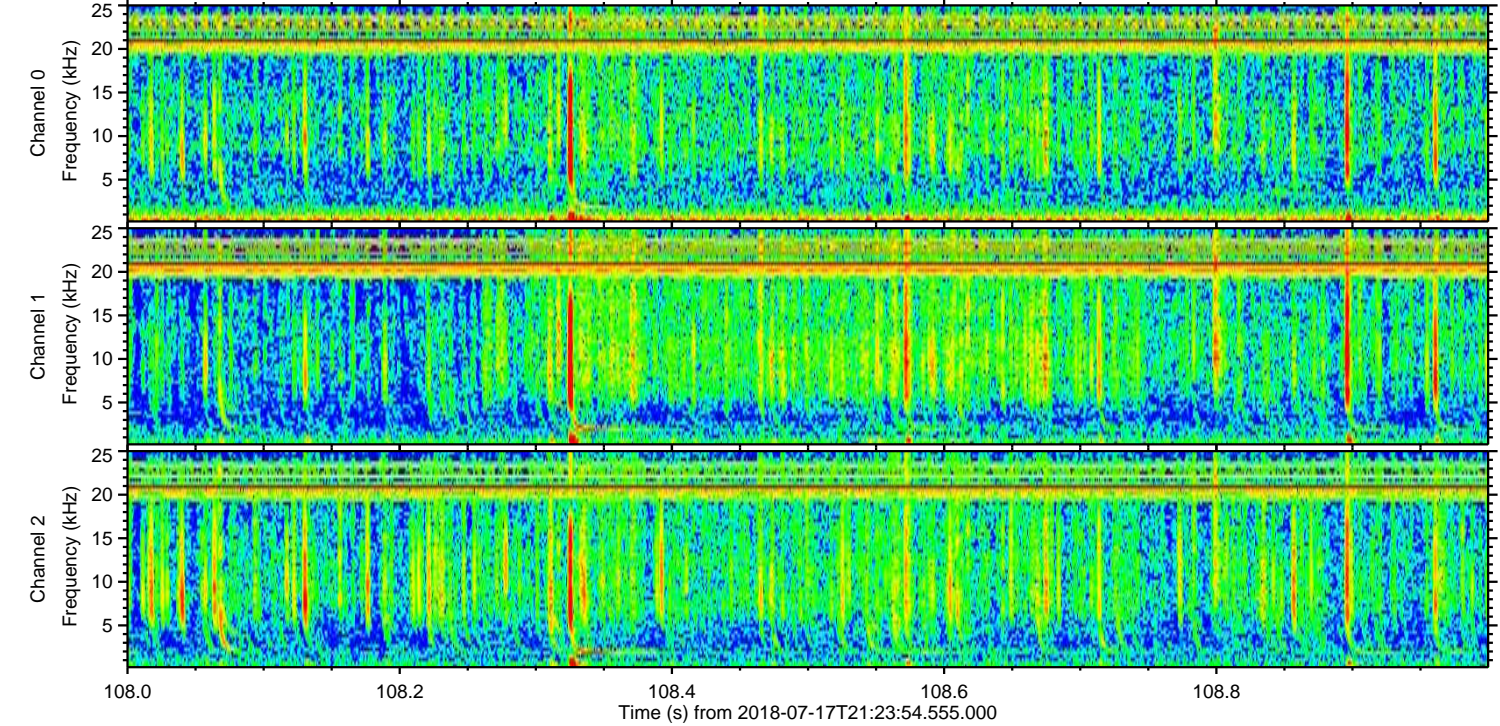
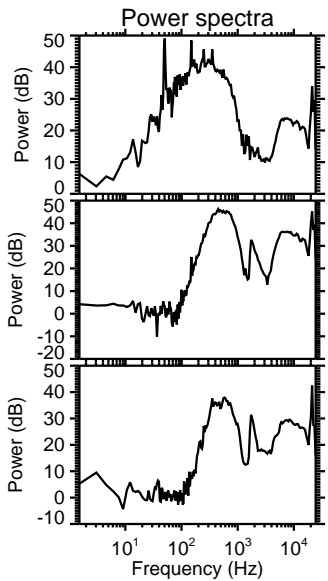
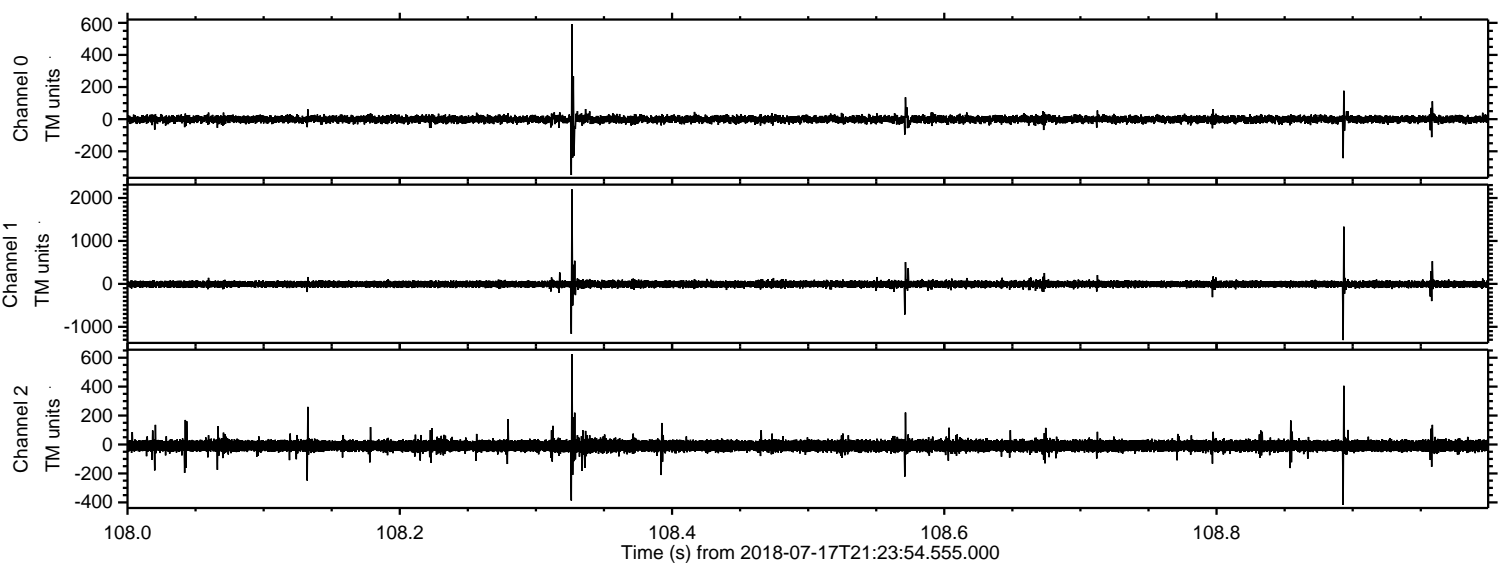


Processed Tue Jul 17 23:32:20 2018 by ELM ver.2012-10-06 from 001__elm20180717_212353__dat00.bin



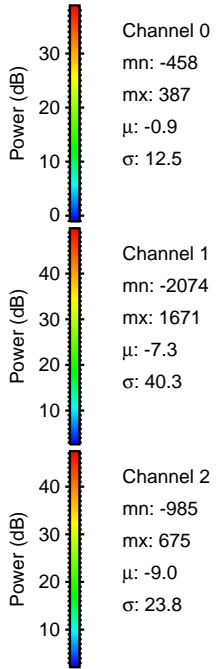
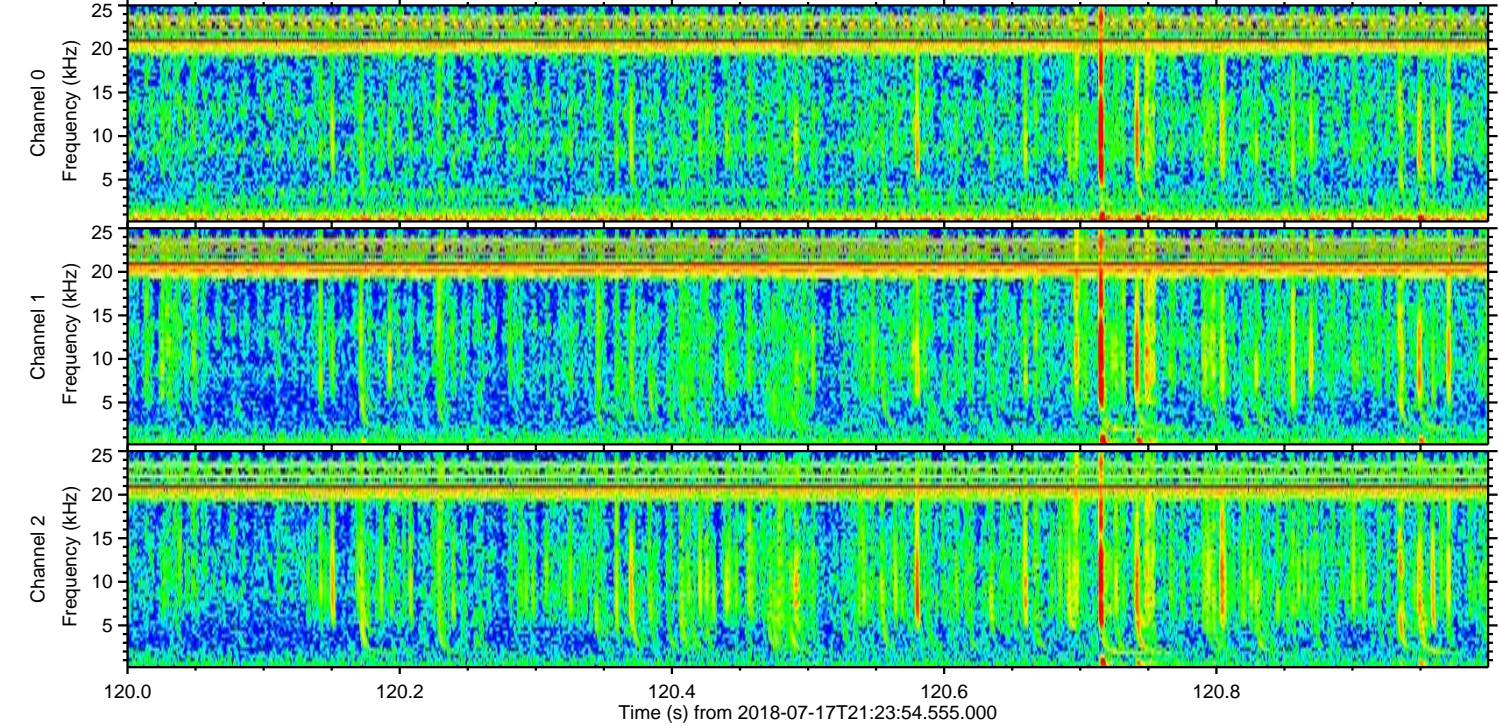
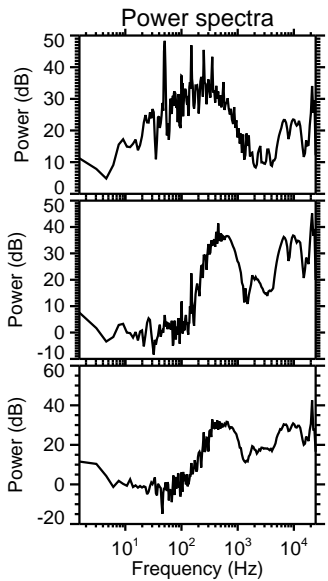
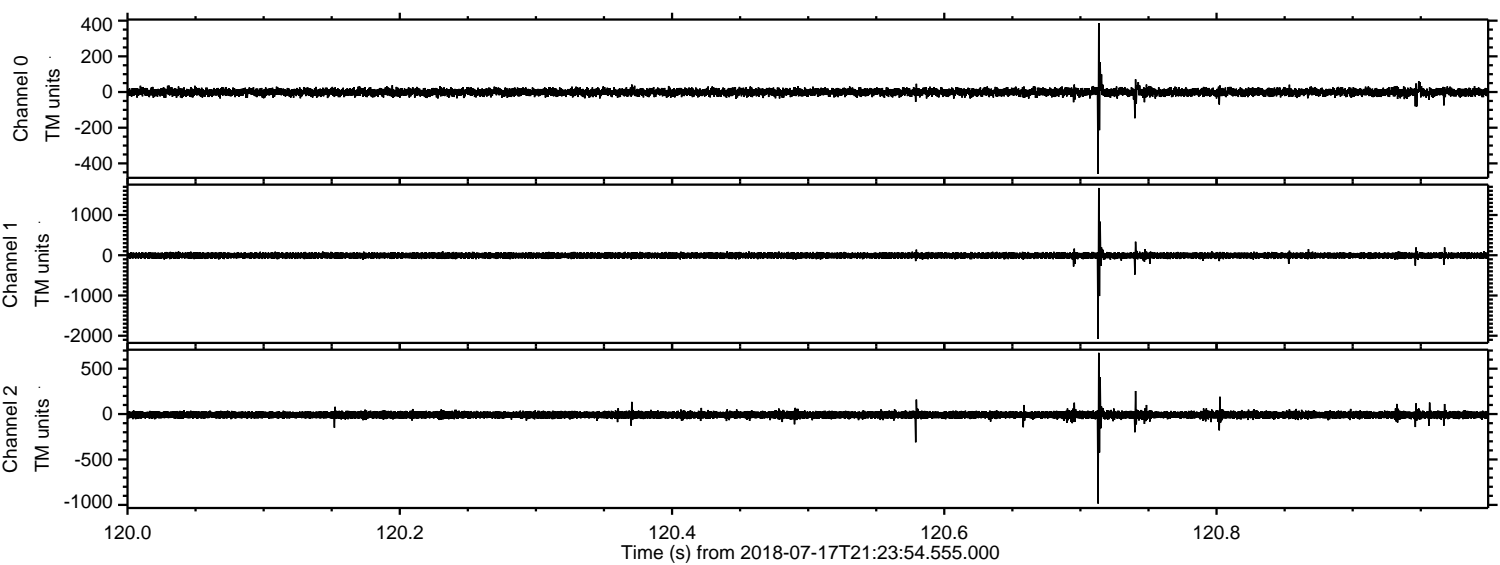
ELMAVAN 3D WAVEFORMS (Measured data sampled at 50 kHz) 51000 packets of 144 samples from 2018-07-17T21:23:54.555.000. Part 109/147

Processed Tue Jul 17 23:32:20 2018 by ELM ver.2012-10-06 from 001__elm20180717_212353__dat00.bin

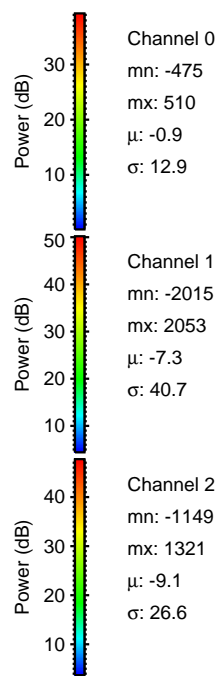
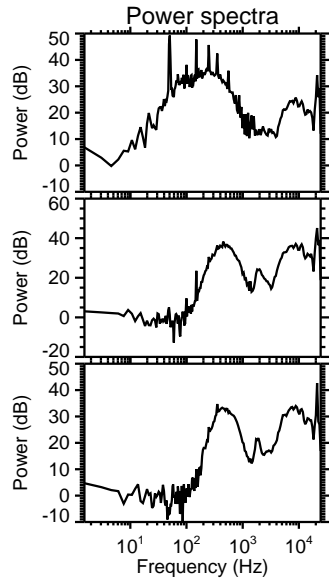
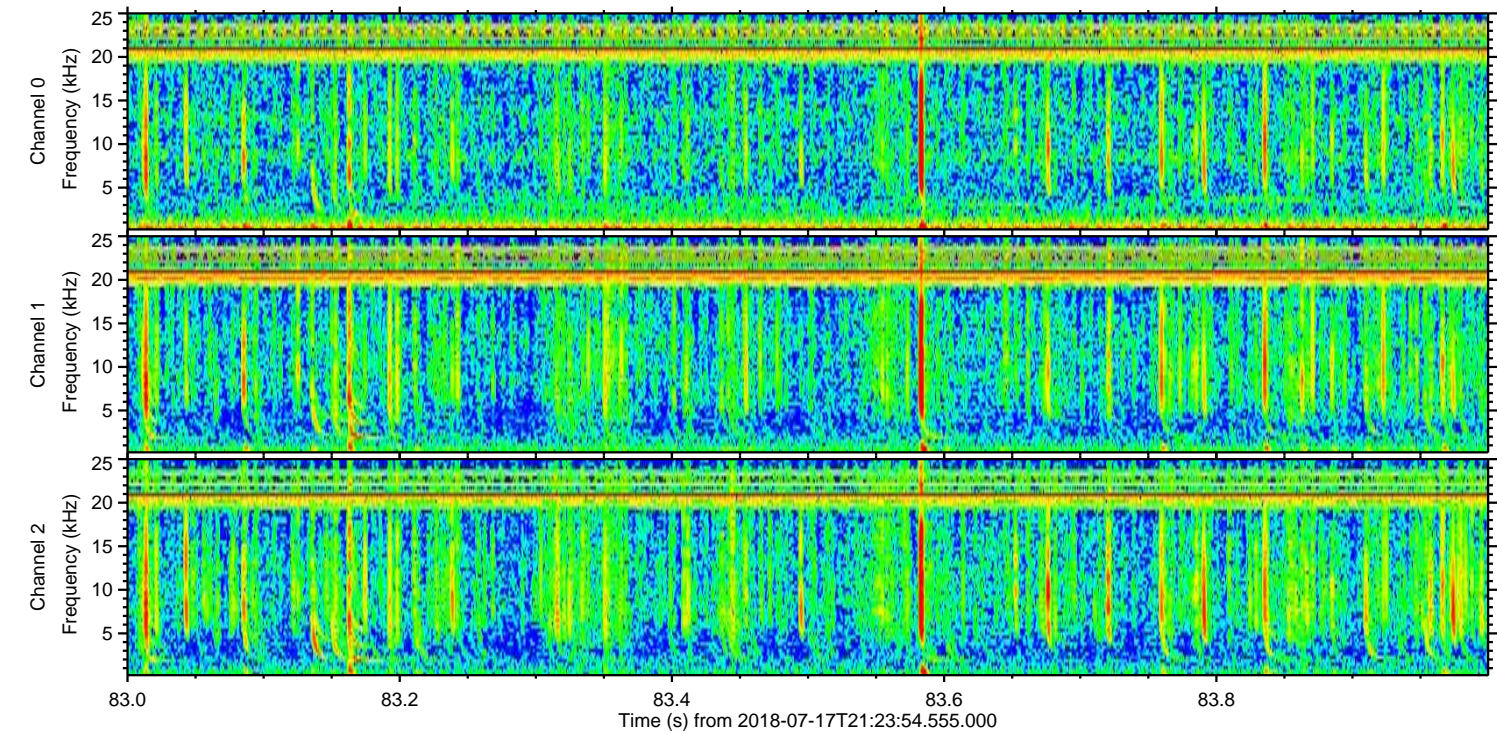
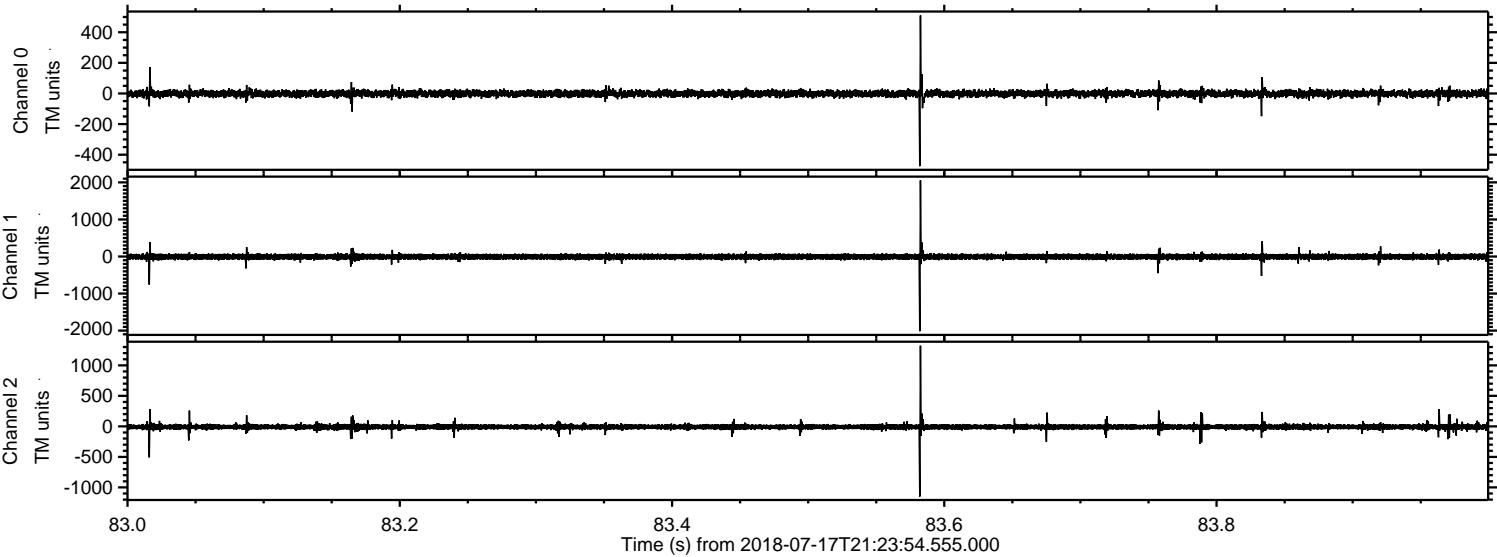


ELMAVAN 3D WAVEFORMS (Measured data sampled at 50 kHz) 51000 packets of 144 samples from 2018-07-17T21:23:54.555.000. Part 121/147

Processed Tue Jul 17 23:32:21 2018 by ELM ver.2012-10-06 from 001__elm20180717_212353__dat00.bin



Processed Tue Jul 17 23:32:22 2018 by ELM ver.2012-10-06 from 001__elm20180717_212353__dat00.bin

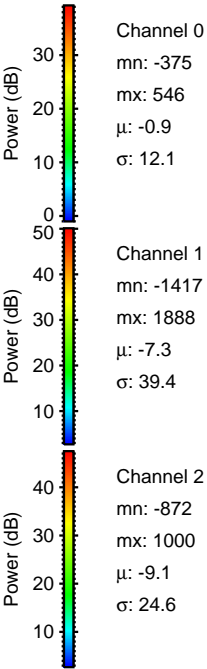
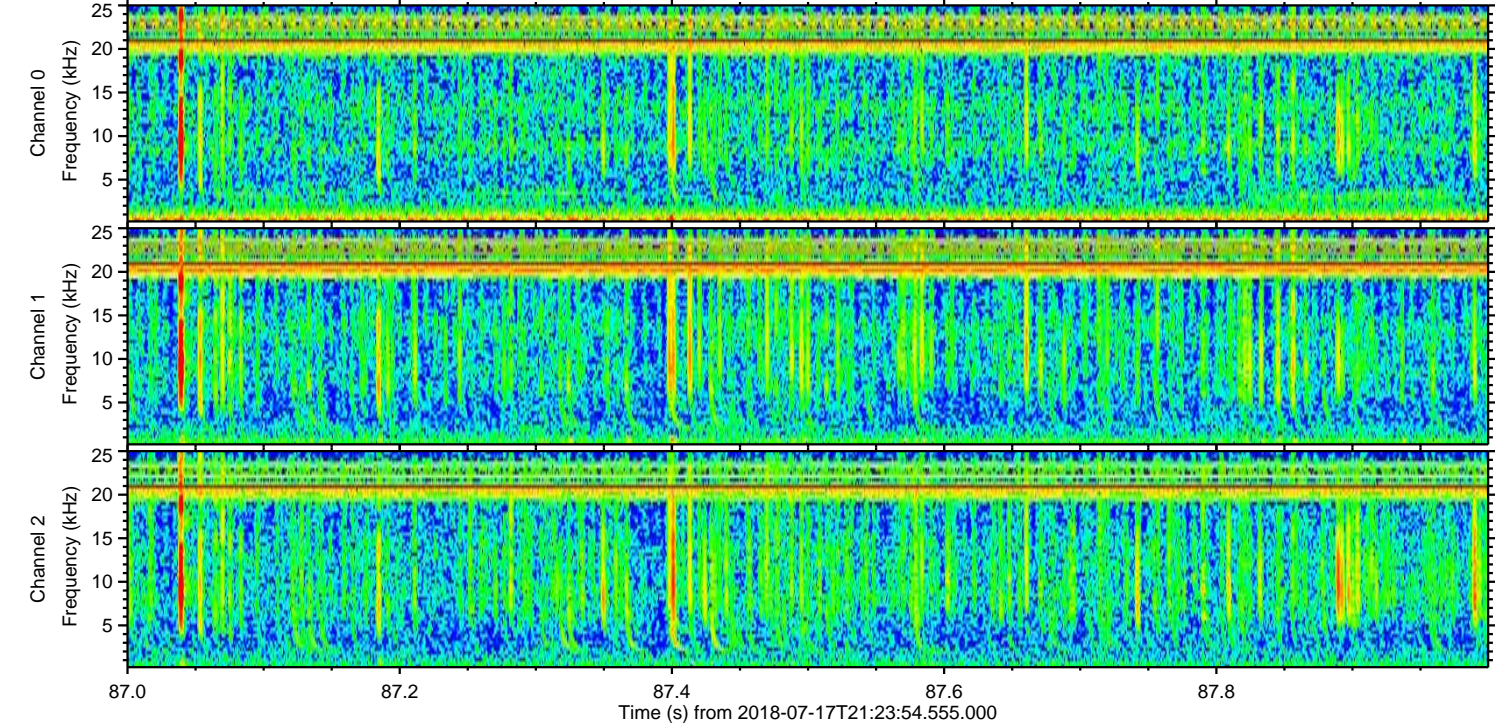
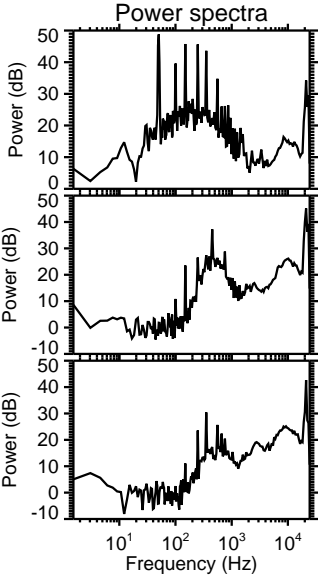
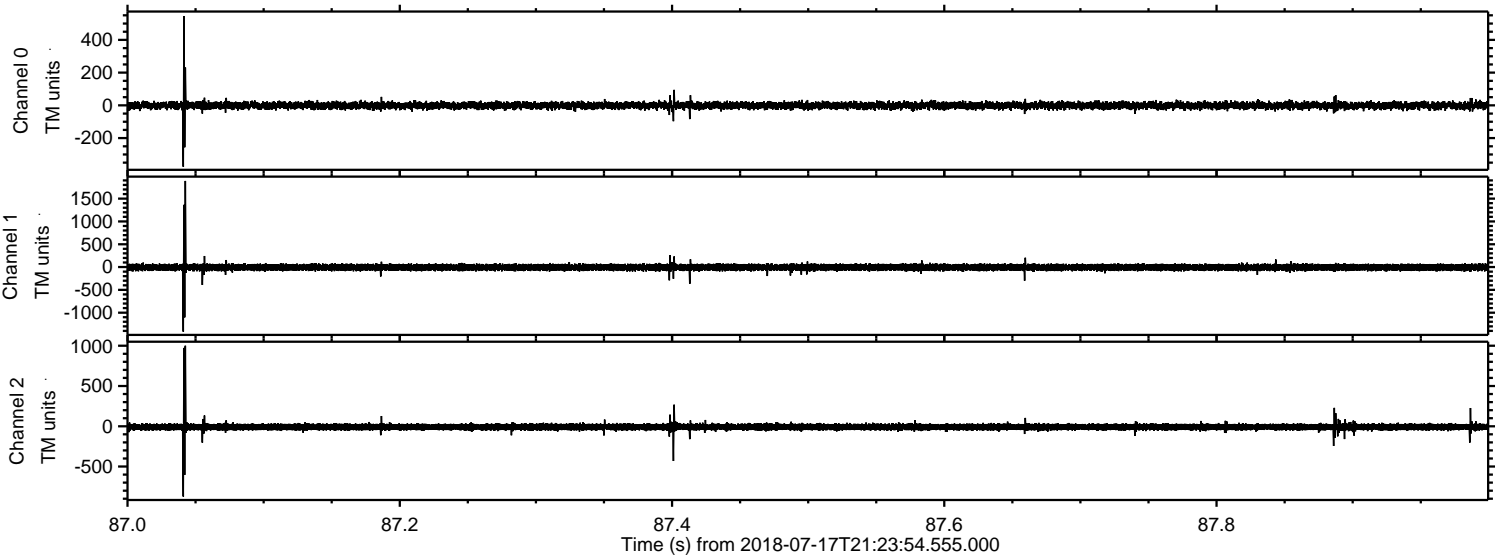


Channel 0
mn: -475
mx: 510
 μ : -0.9
 σ : 12.9

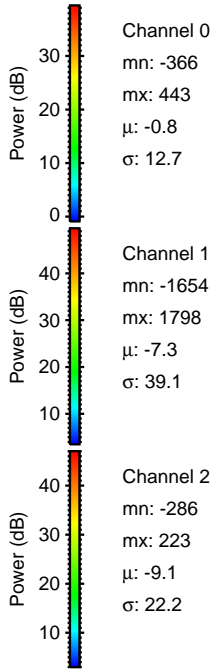
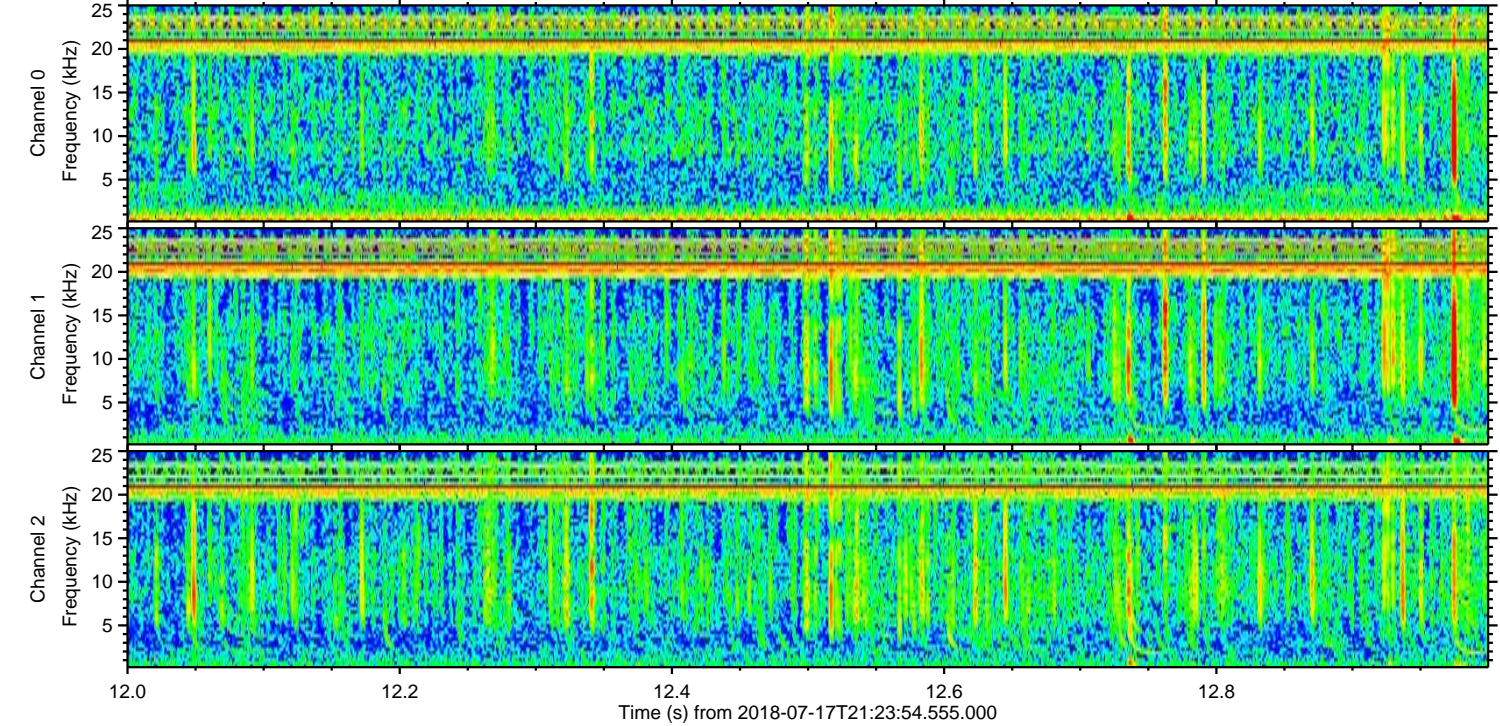
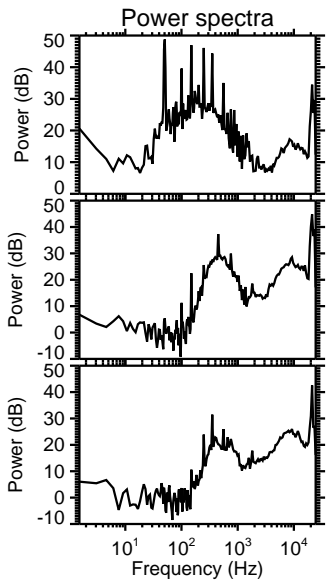
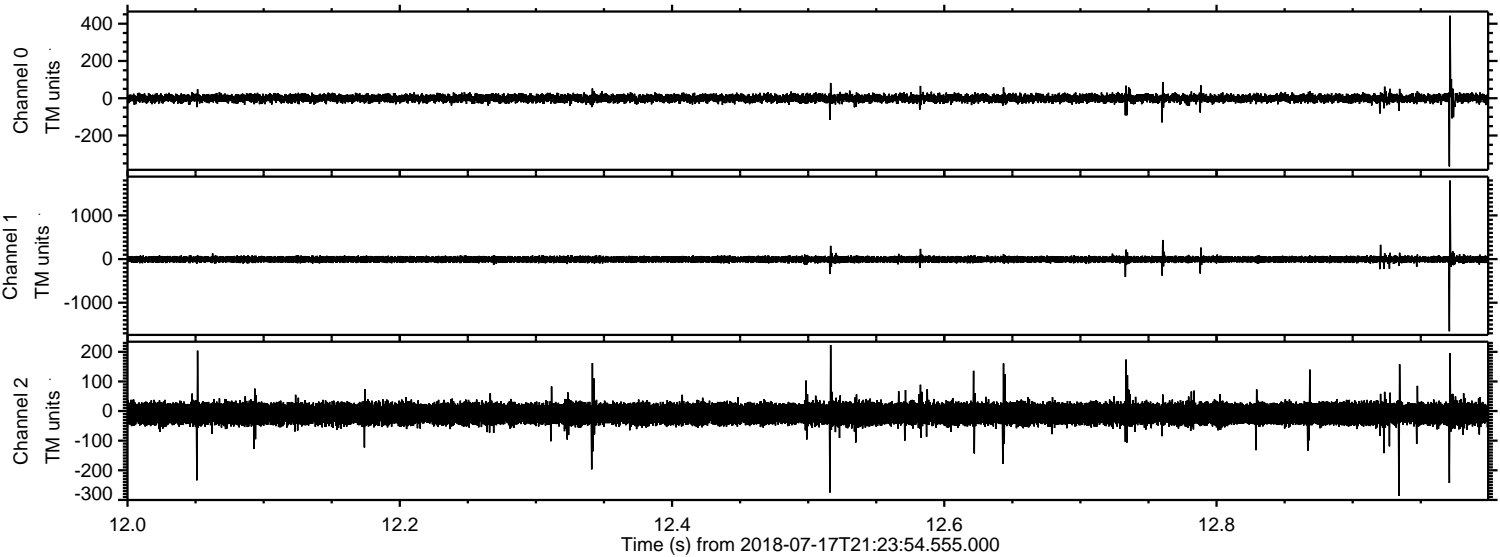
Channel 1
mn: -2015
mx: 2053
 μ : -7.3
 σ : 40.7

Channel 2
mn: -1149
mx: 1321
 μ : -9.1
 σ : 26.6

Processed Tue Jul 17 23:32:22 2018 by ELM ver.2012-10-06 from 001__elm20180717_212353__dat00.bin



Processed Tue Jul 17 23:32:23 2018 by ELM ver.2012-10-06 from 001__elm20180717_212353__dat00.bin



Processed Tue Jul 17 23:32:24 2018 by ELM ver.2012-10-06 from 001__elm20180717_212353__dat00.bin

