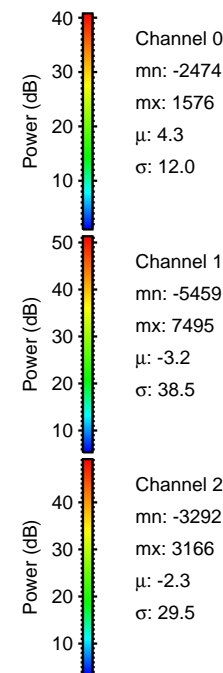
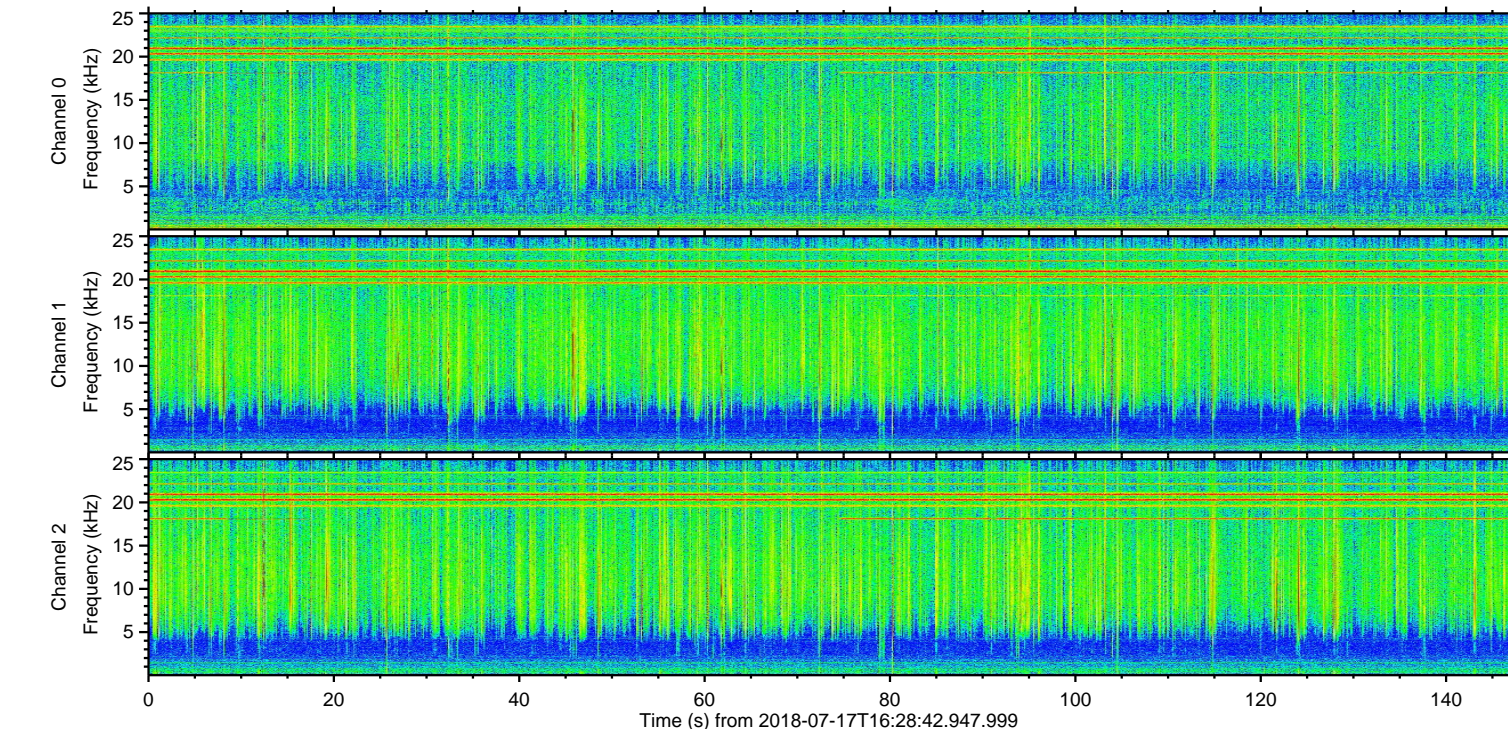
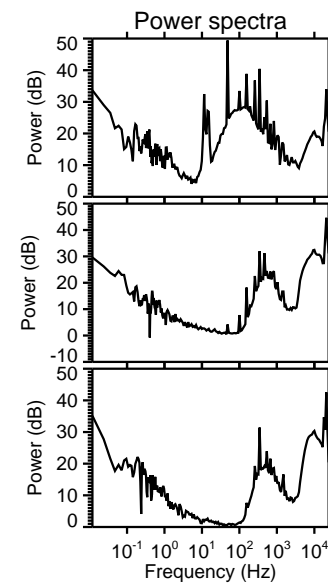
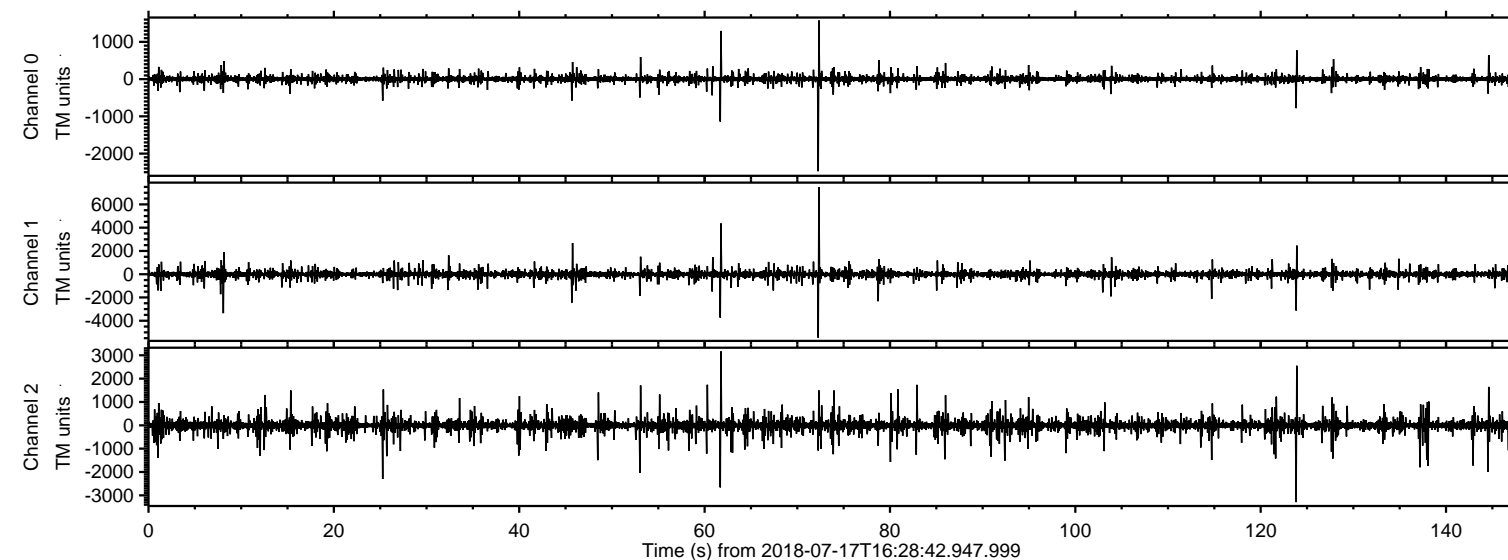
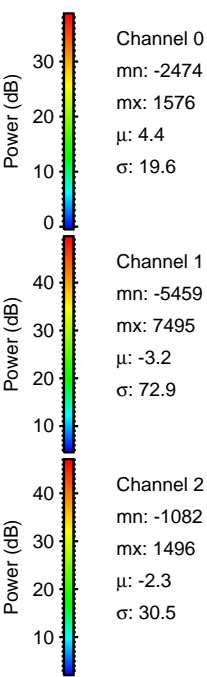
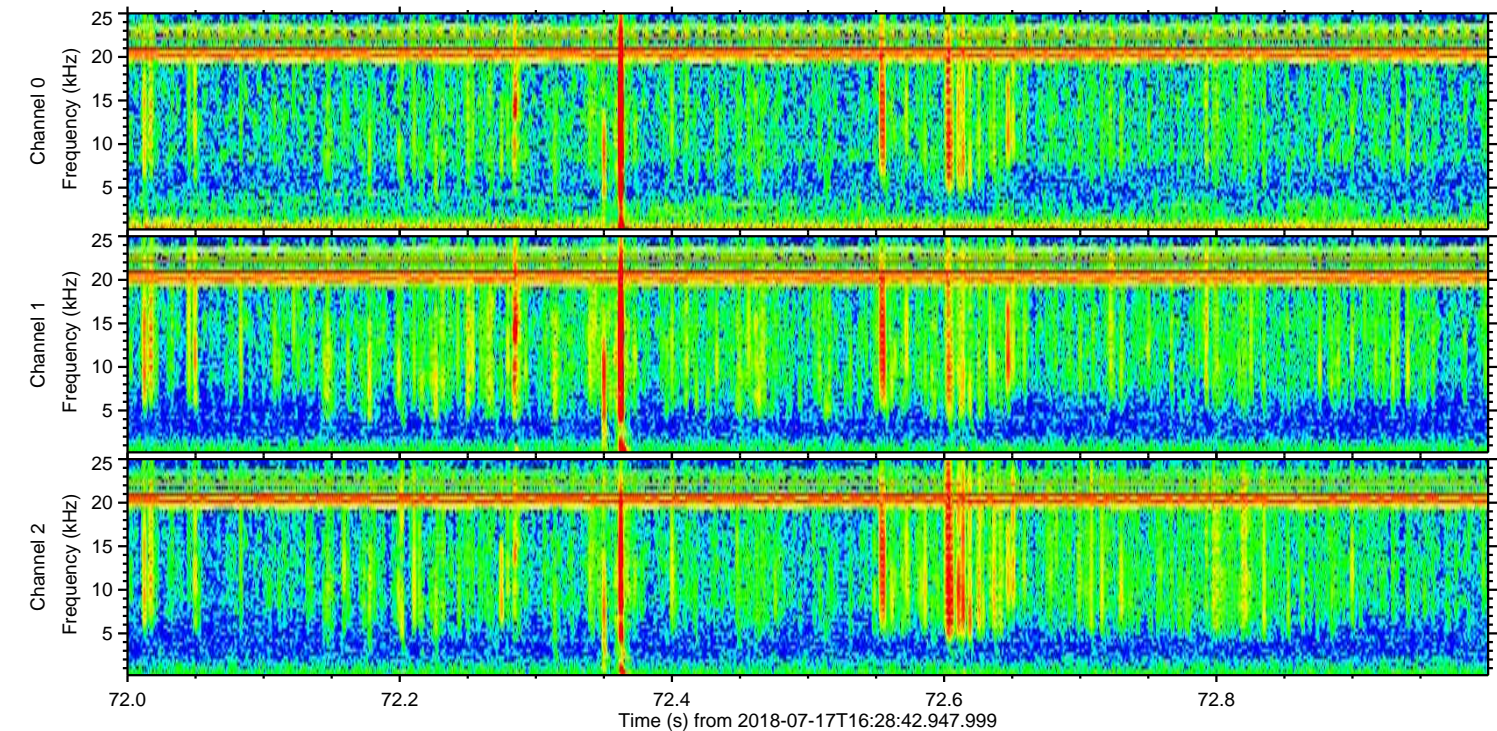
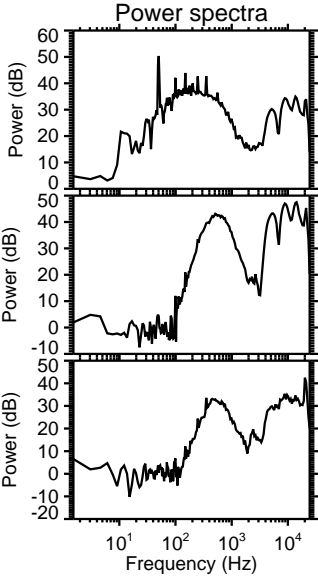
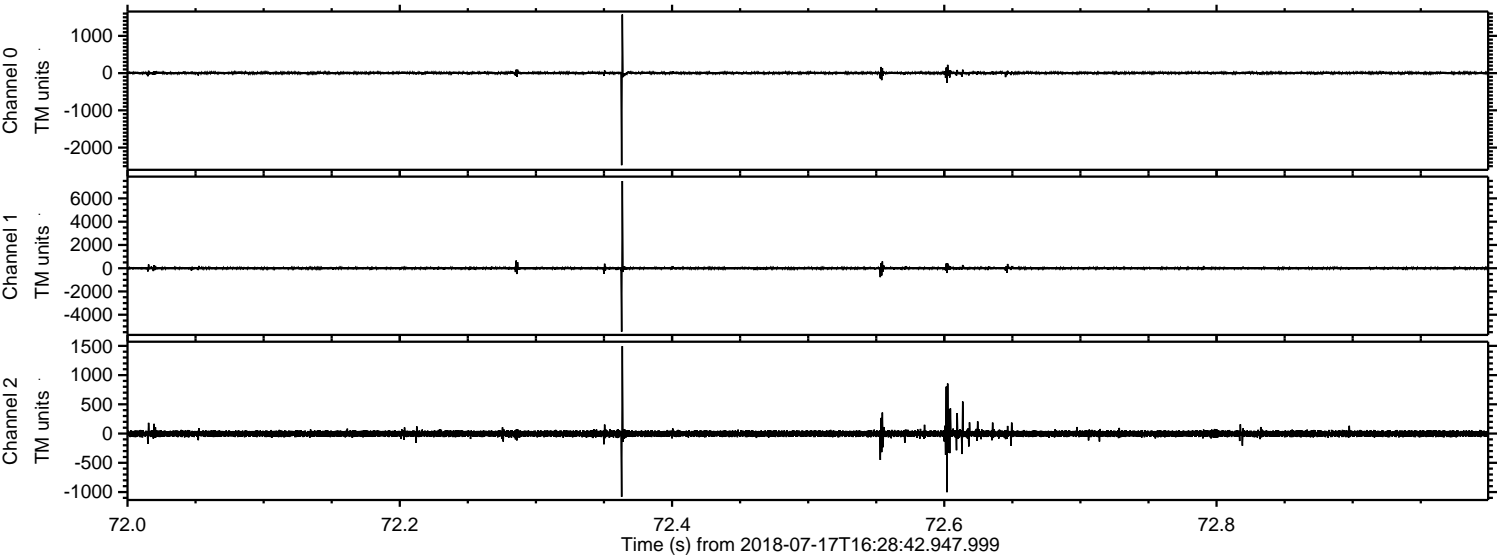


ELMAVAN 3D WAVEFORMS (Measured data sampled at 50 kHz) 51000 packets of 144 samples from 2018-07-17T16:28:42.947.999.

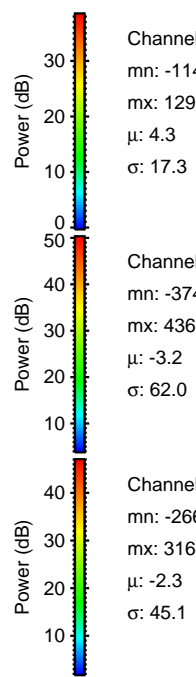
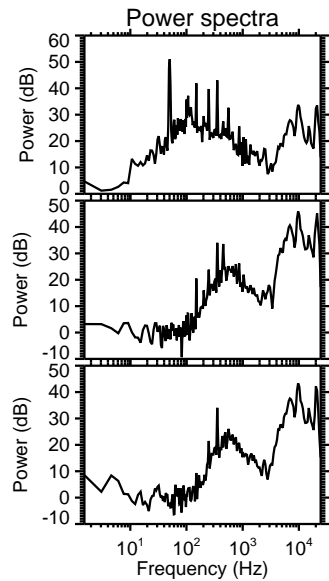
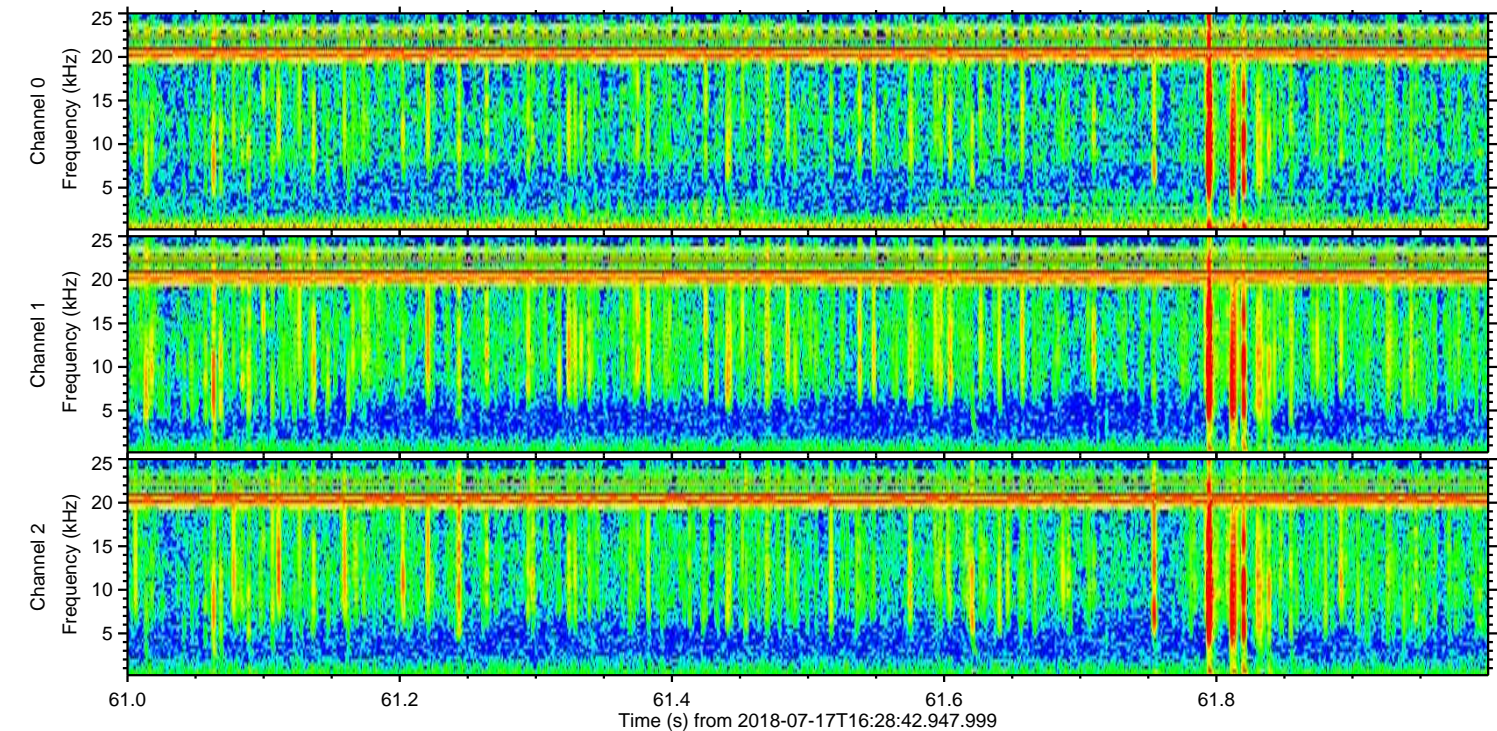
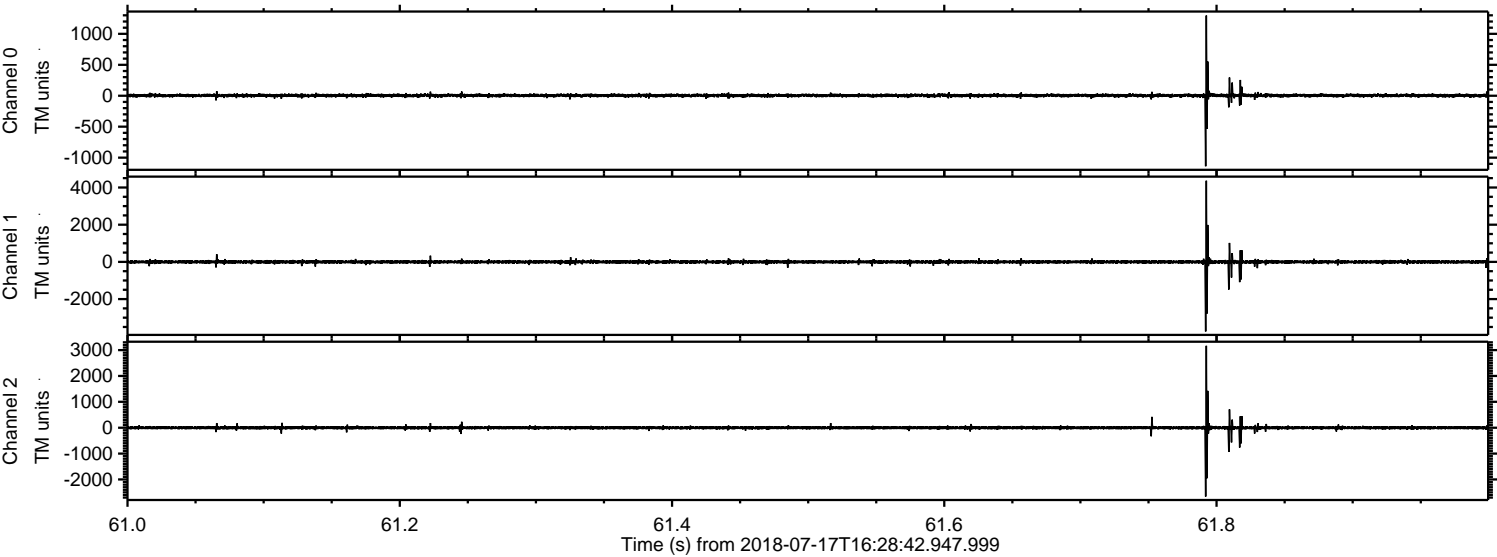
Processed Tue Jul 17 18:36:39 2018 by ELM ver.2012-10-06 from 001__elm20180717_162841__dat00.bin



Processed Tue Jul 17 18:36:45 2018 by ELM ver.2012-10-06 from 001__elm20180717_162841__dat00.bin



Processed Tue Jul 17 18:36:46 2018 by ELM ver.2012-10-06 from 001__elm20180717_162841__dat00.bin

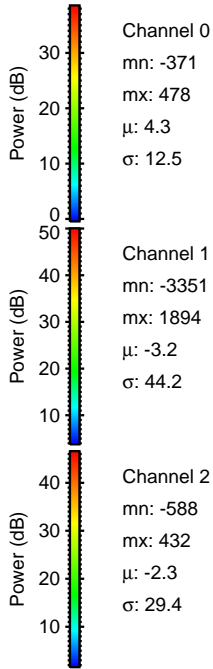
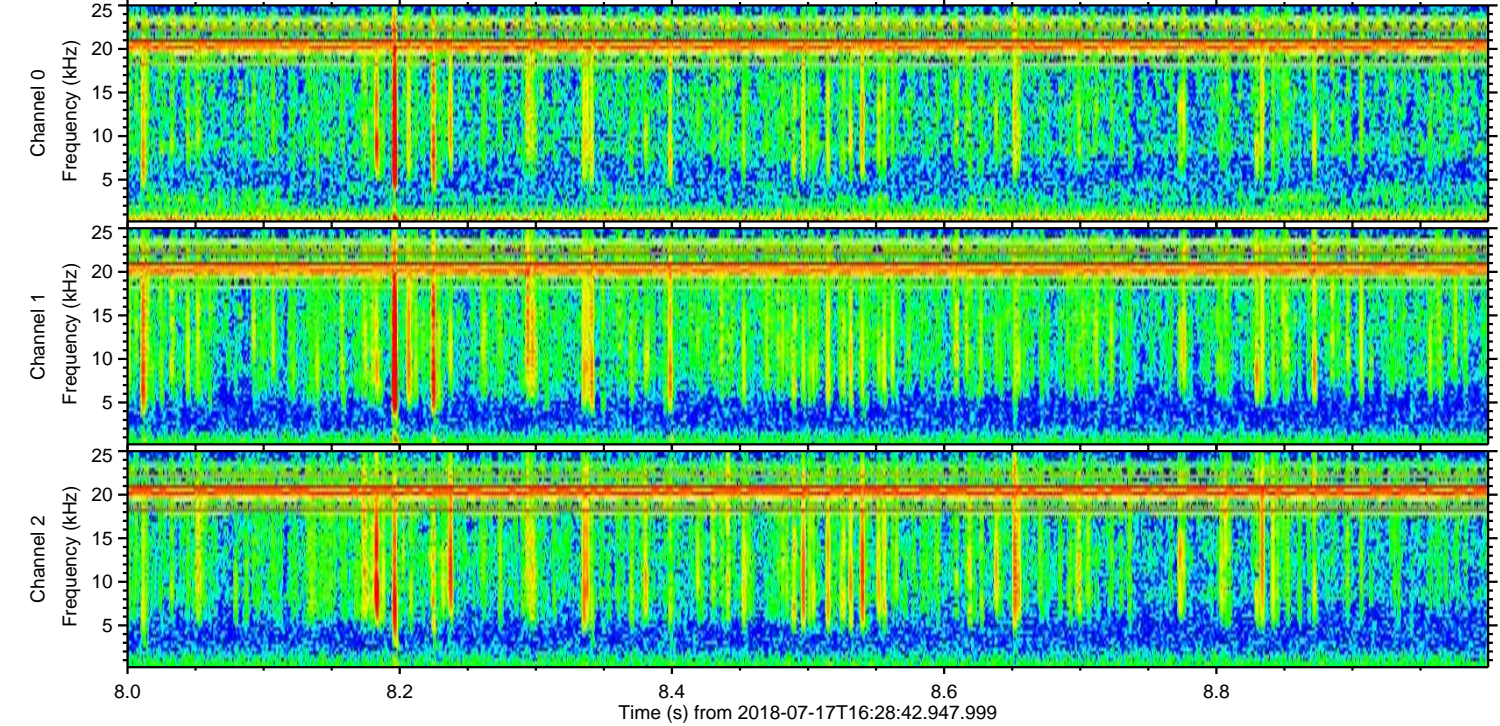
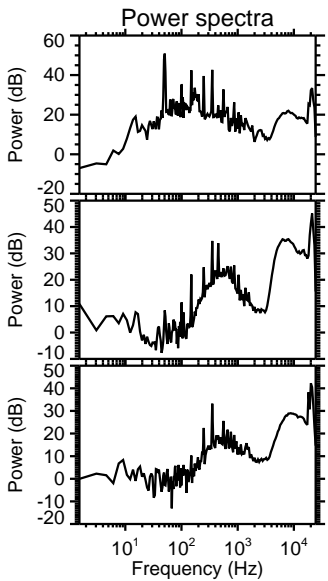
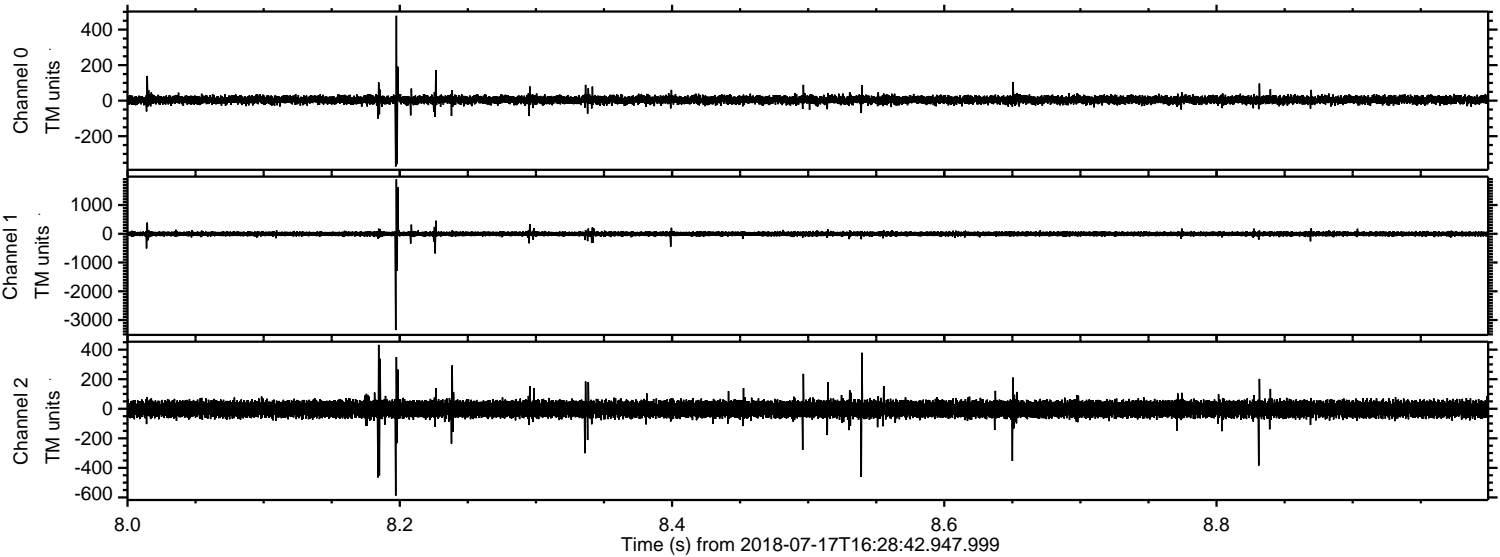


Channel 0
mn: -1140
mx: 1296
 μ : 4.3
 σ : 17.3

Channel 1
mn: -3740
mx: 4365
 μ : -3.2
 σ : 62.0

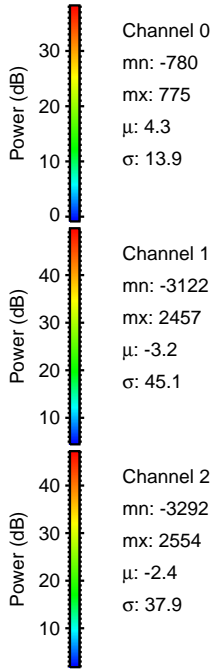
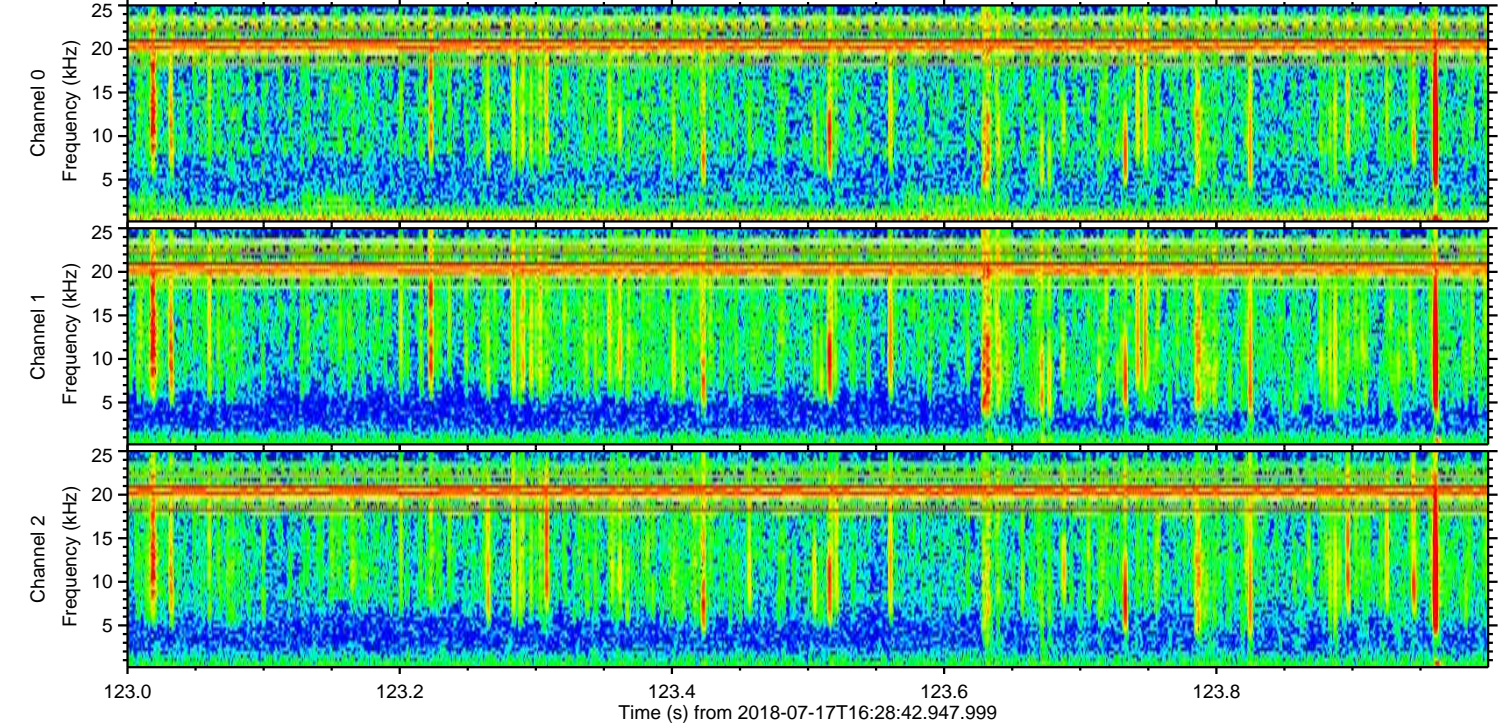
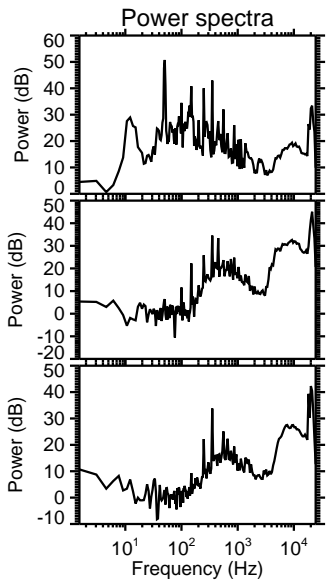
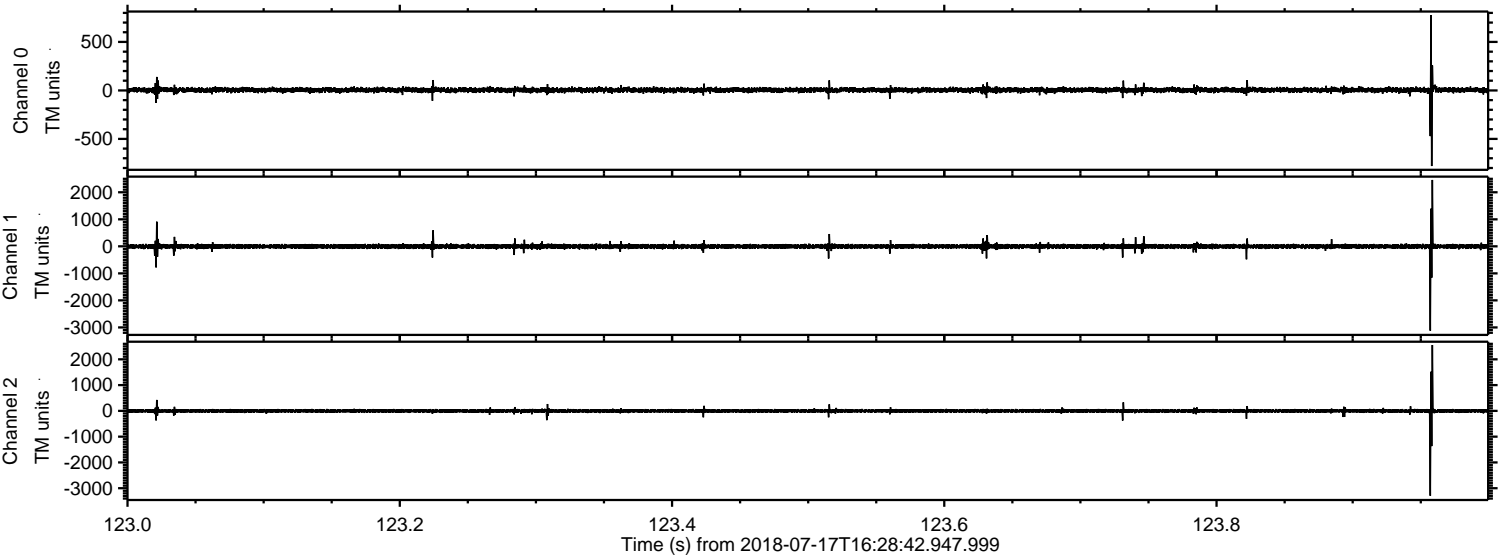
Channel 2
mn: -2661
mx: 3166
 μ : -2.3
 σ : 45.1

Processed Tue Jul 17 18:36:46 2018 by ELM ver.2012-10-06 from 001__elm20180717_162841__dat00.bin

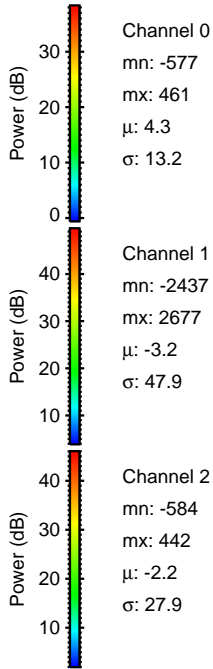
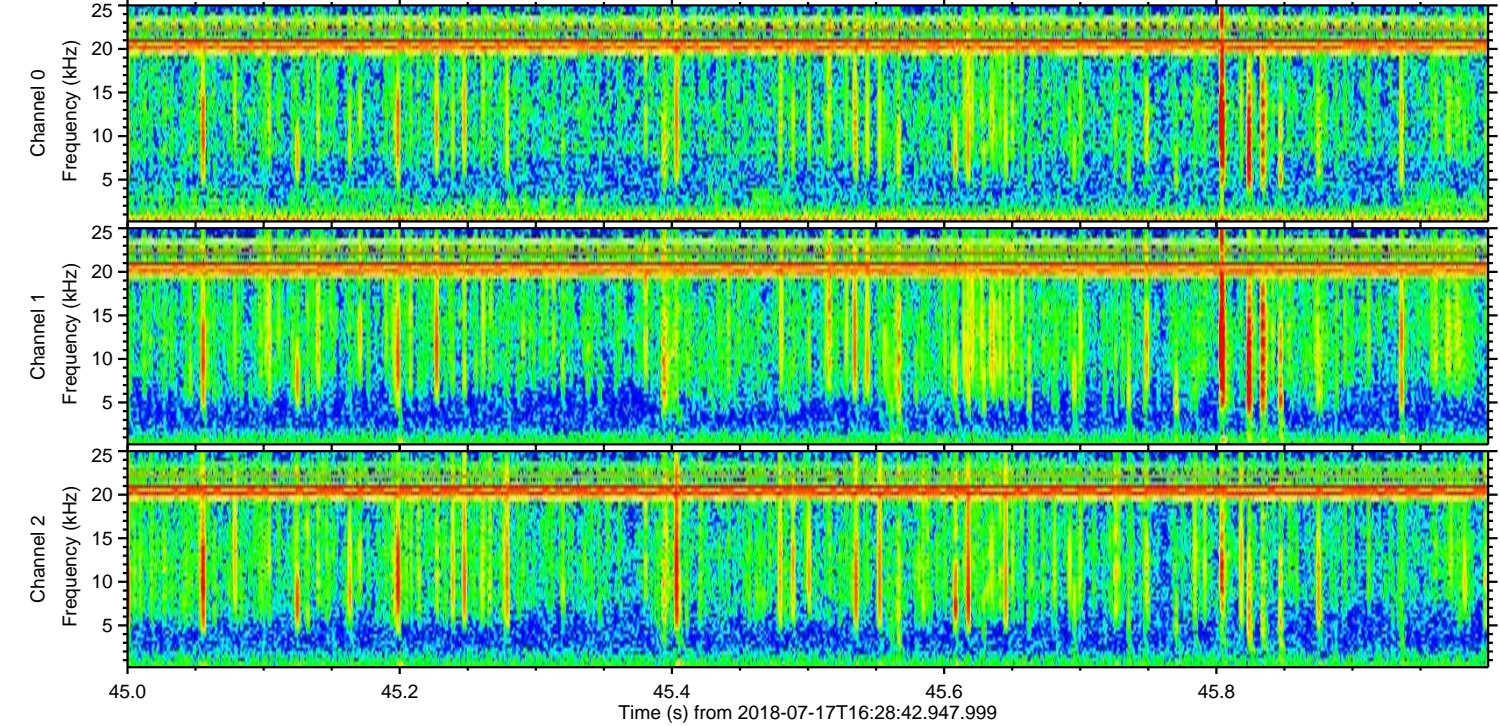
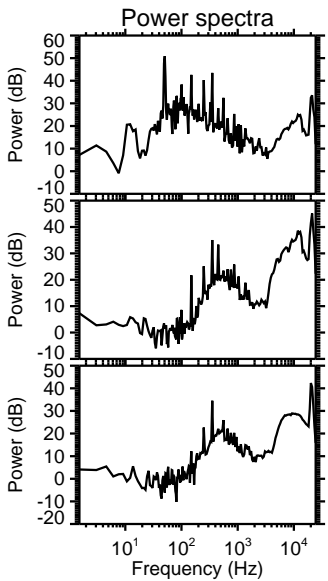
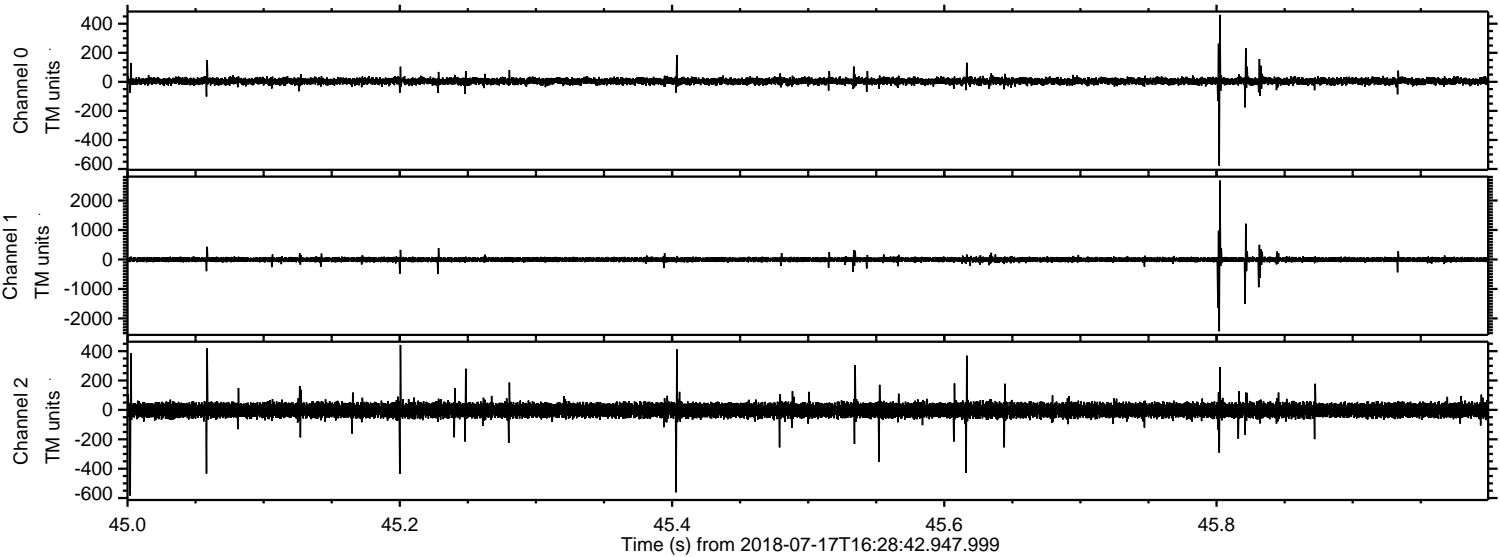


ELMAVAN 3D WAVEFORMS (Measured data sampled at 50 kHz) 51000 packets of 144 samples from 2018-07-17T16:28:42.947.999. Part 124/147

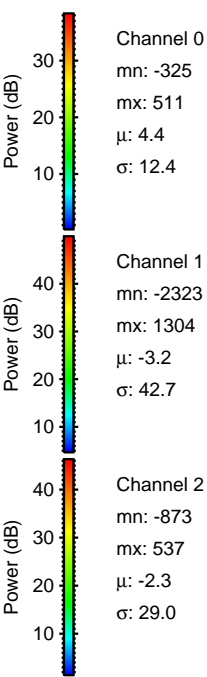
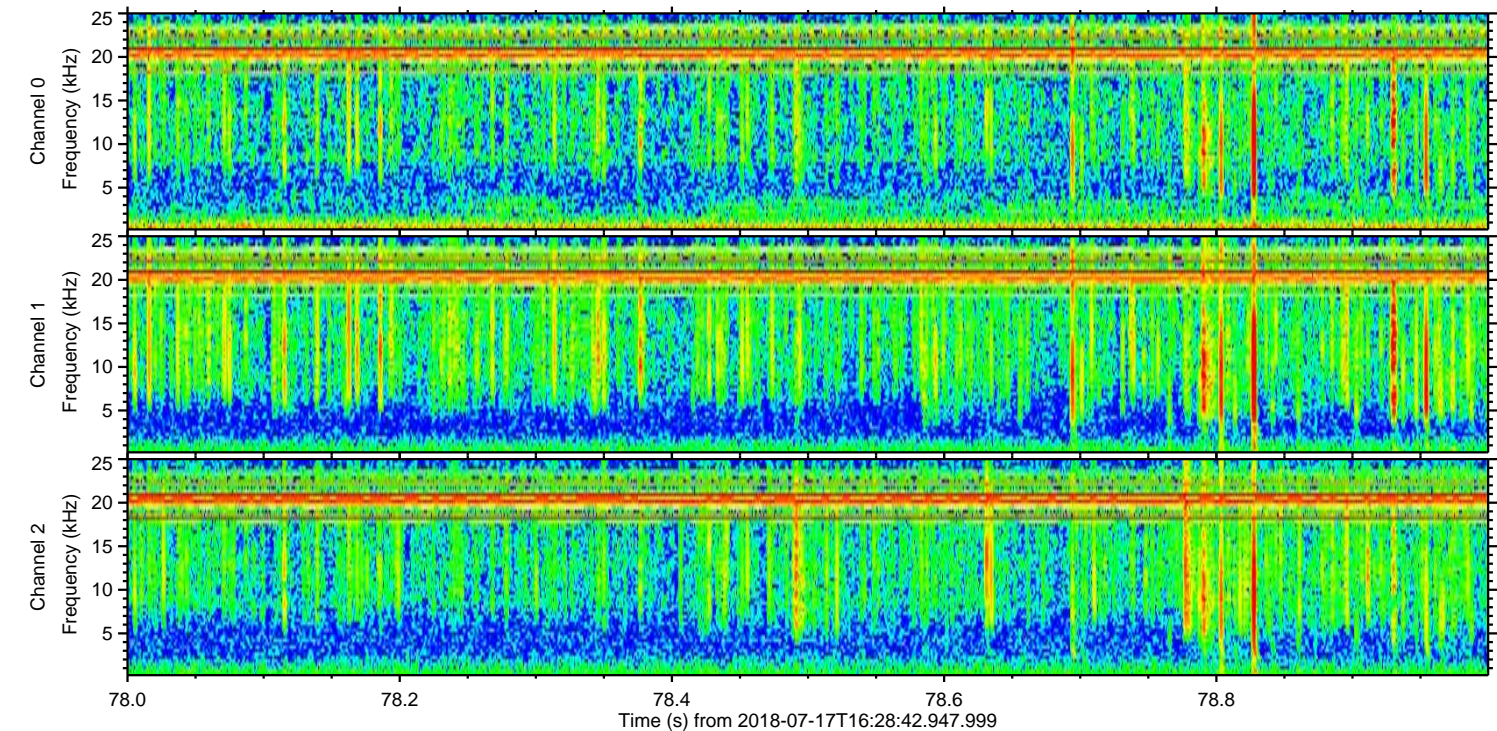
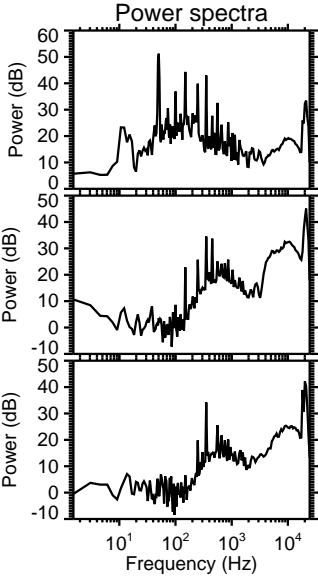
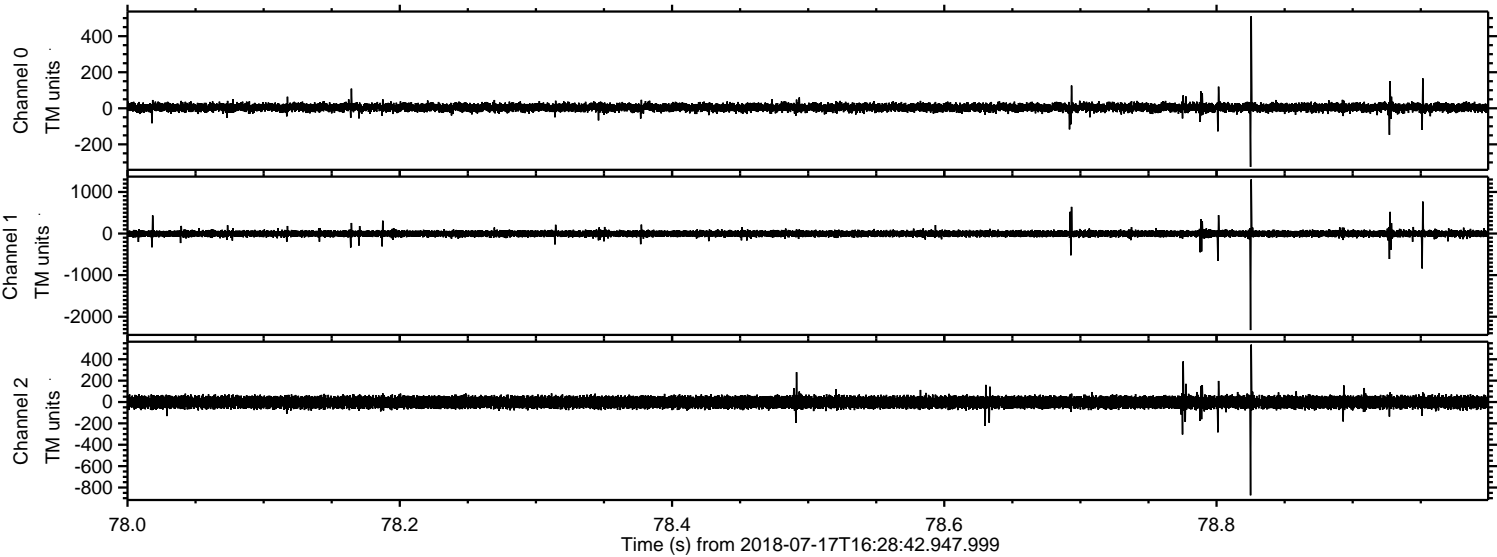
Processed Tue Jul 17 18:36:47 2018 by ELM ver.2012-10-06 from 001__elm20180717_162841__dat00.bin



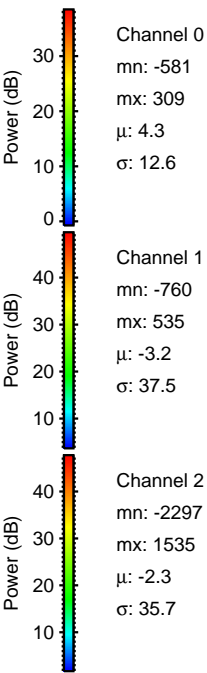
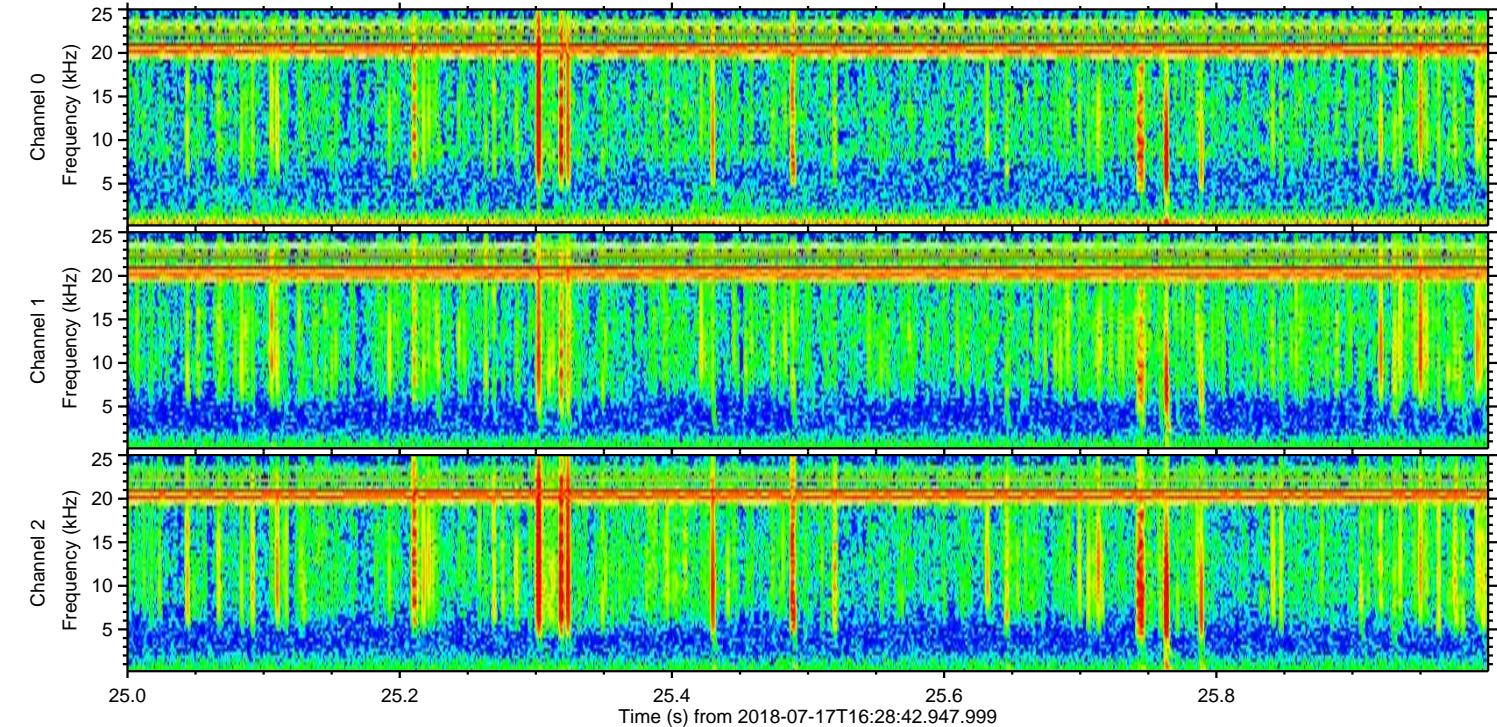
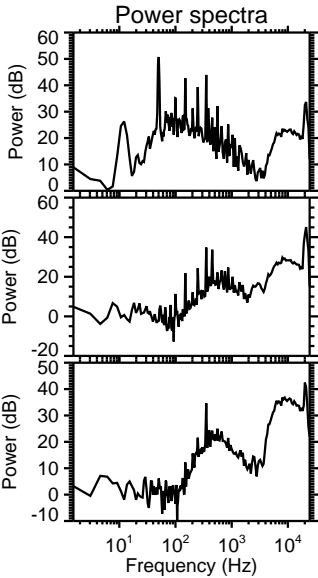
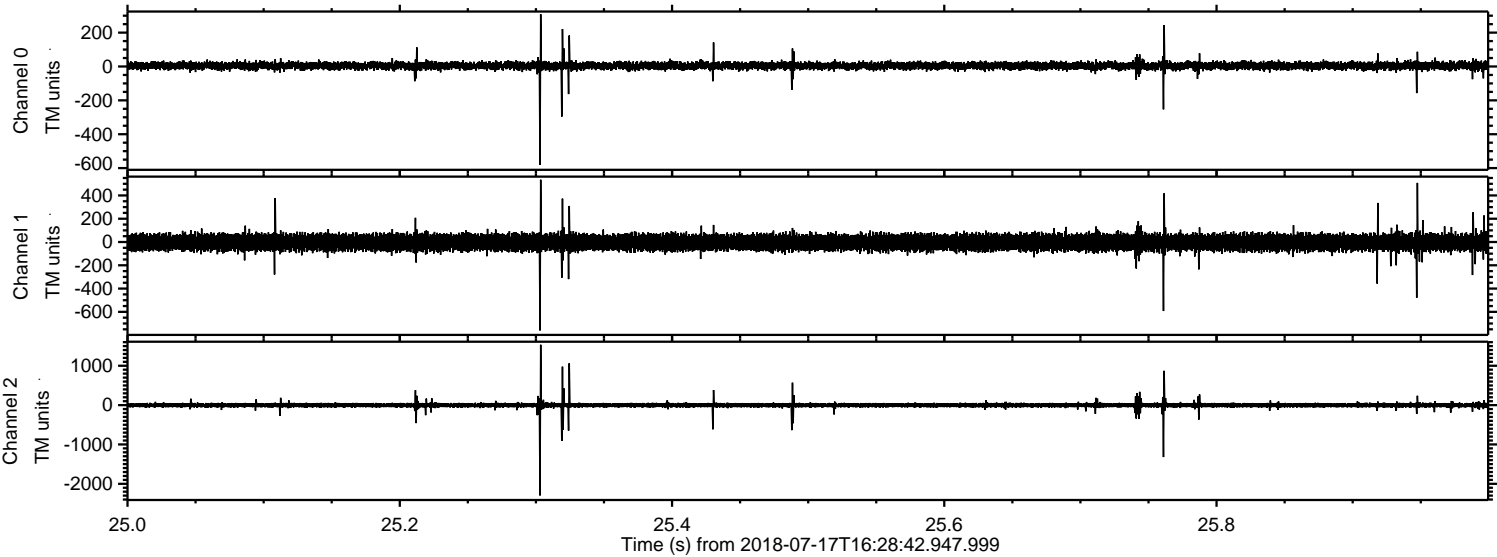
Processed Tue Jul 17 18:36:48 2018 by ELM ver.2012-10-06 from 001__elm20180717_162841__dat00.bin



Processed Tue Jul 17 18:36:48 2018 by ELM ver.2012-10-06 from 001__elm20180717_162841__dat00.bin

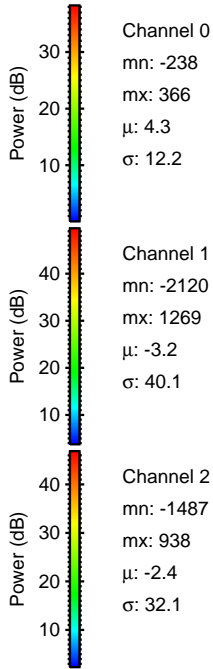
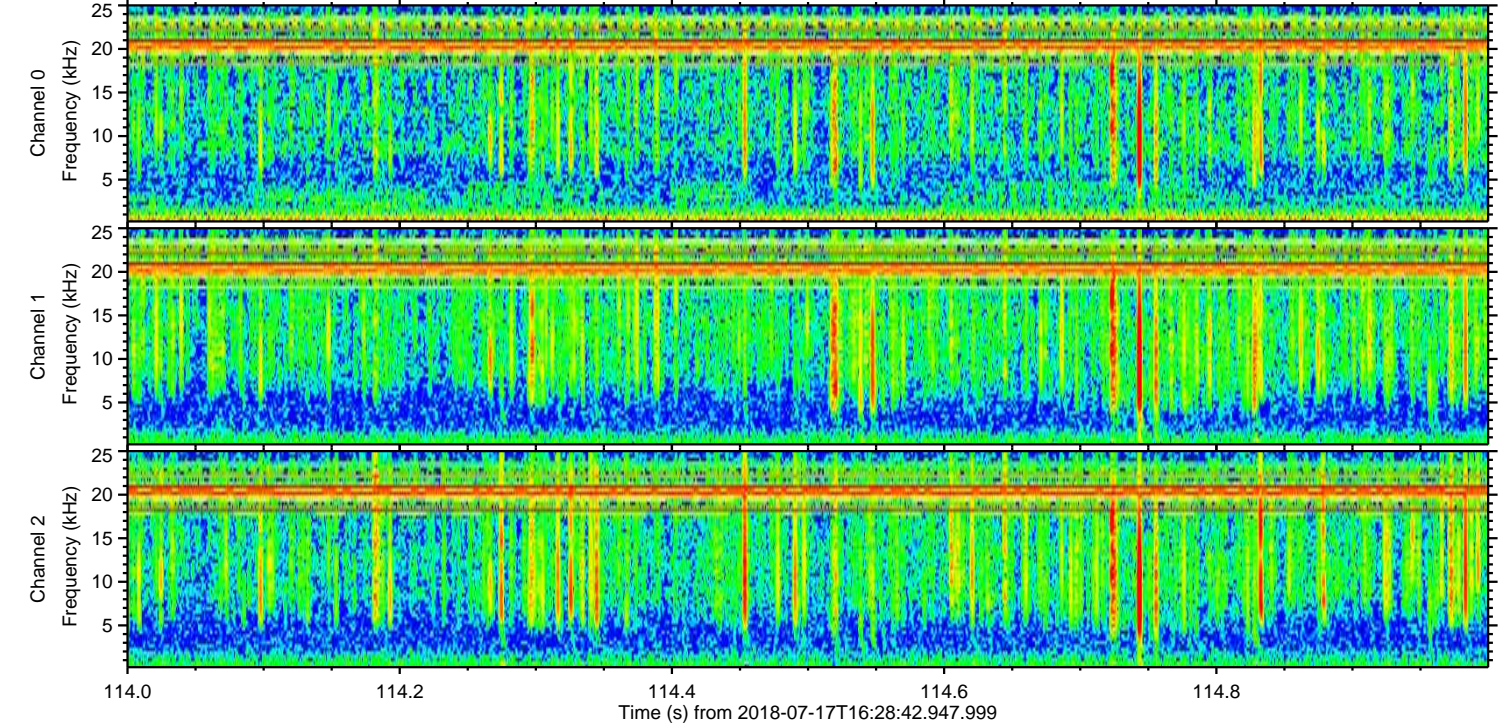
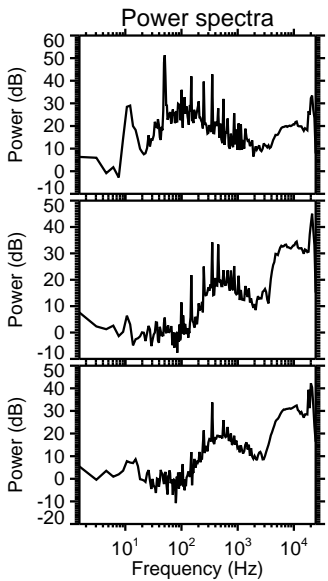
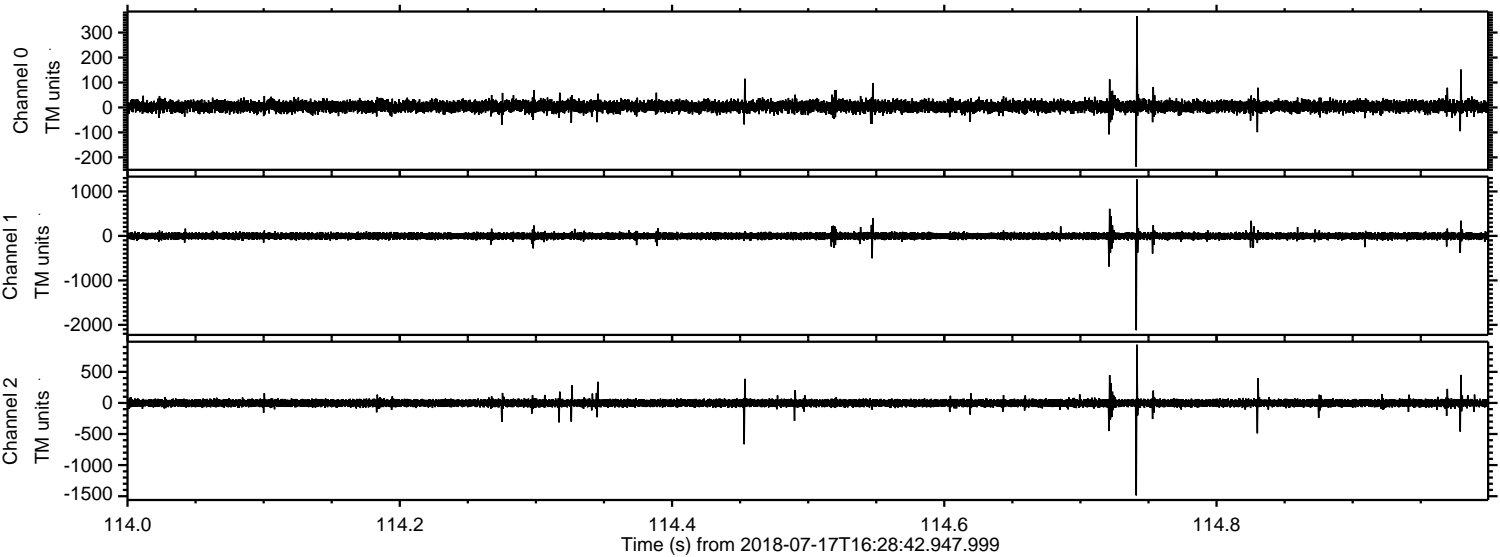


Processed Tue Jul 17 18:36:49 2018 by ELM ver.2012-10-06 from 001__elm20180717_162841__dat00.bin

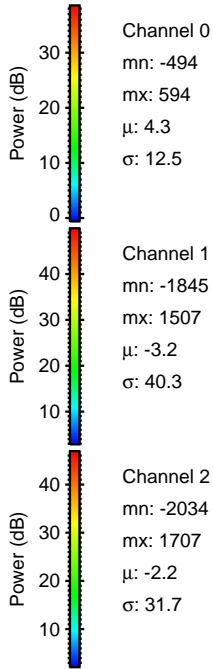
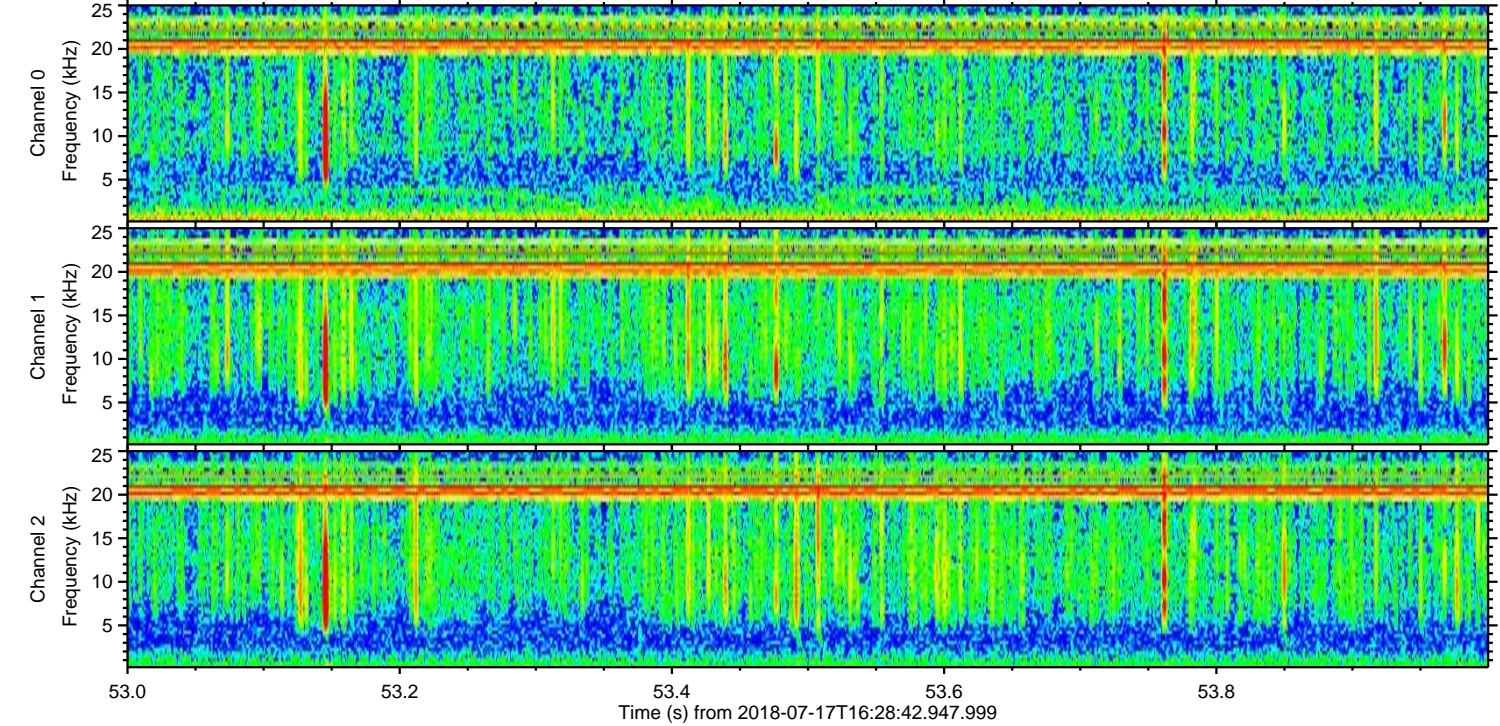
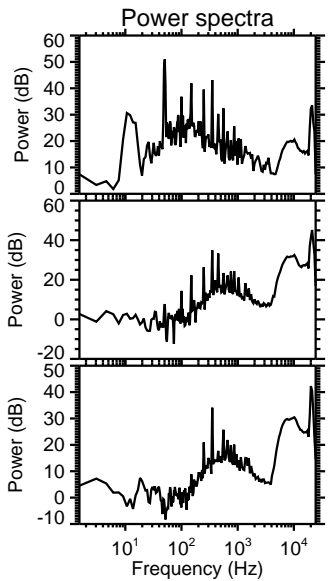
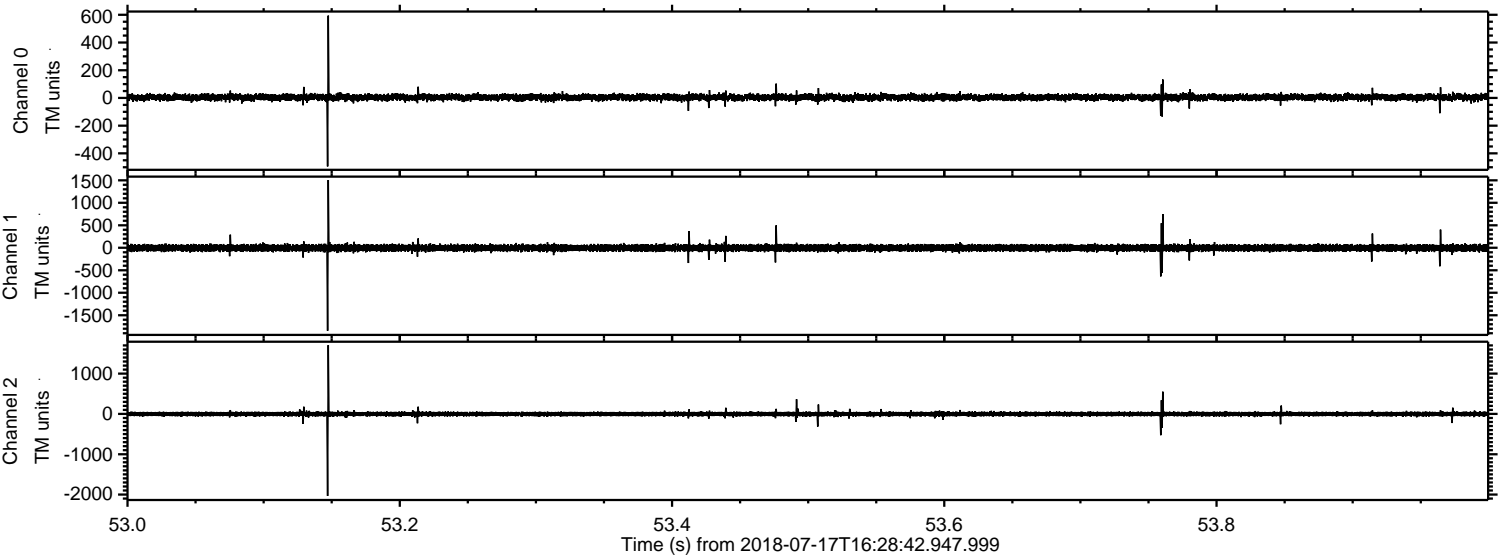


ELMAVAN 3D WAVEFORMS (Measured data sampled at 50 kHz) 51000 packets of 144 samples from 2018-07-17T16:28:42.947.999. Part 115/147

Processed Tue Jul 17 18:36:50 2018 by ELM ver.2012-10-06 from 001__elm20180717_162841__dat00.bin



Processed Tue Jul 17 18:36:50 2018 by ELM ver.2012-10-06 from 001__elm20180717_162841__dat00.bin



Channel 0
mn: -494
mx: 594
 μ : 4.3
 σ : 12.5

Channel 1
mn: -1845
mx: 1507
 μ : -3.2
 σ : 40.3

Channel 2
mn: -2034
mx: 1707
 μ : -2.2
 σ : 31.7

Processed Tue Jul 17 18:36:51 2018 by ELM ver.2012-10-06 from 001__elm20180717_162841__dat00.bin

