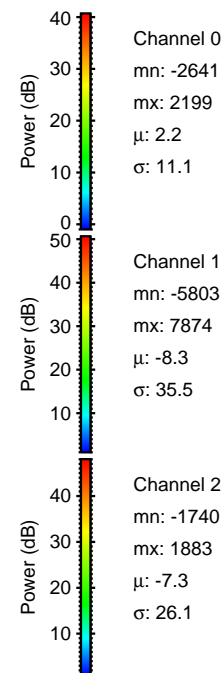
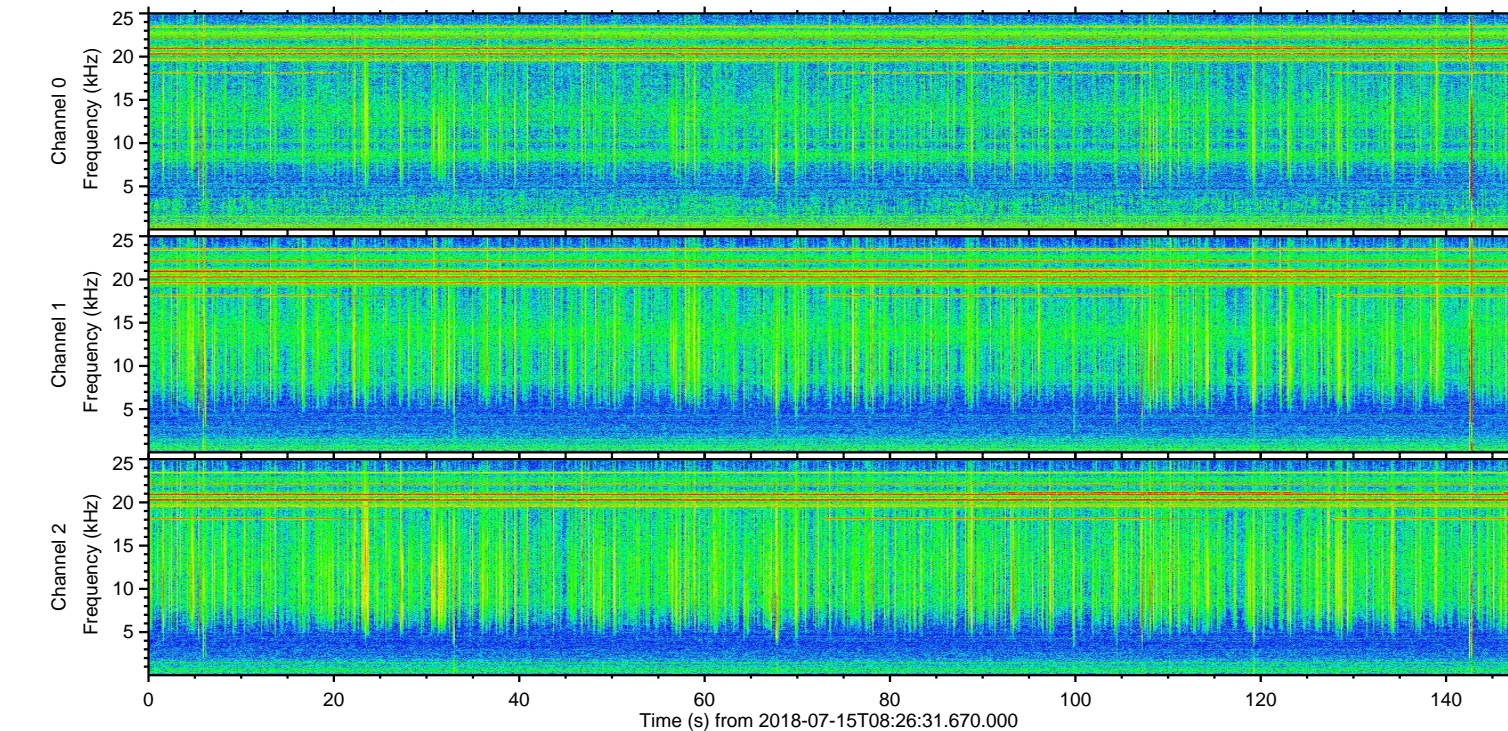
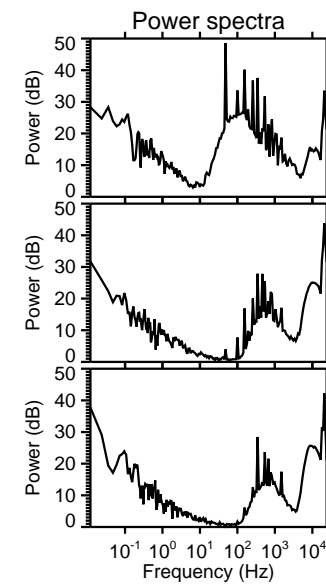
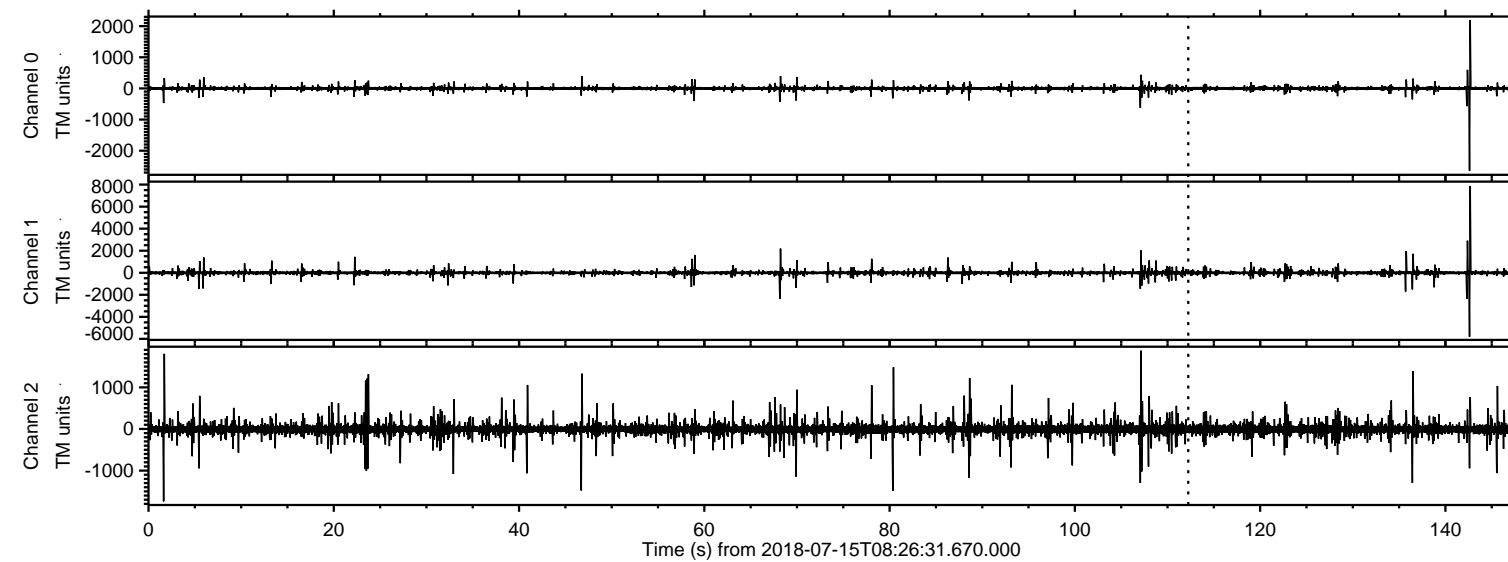


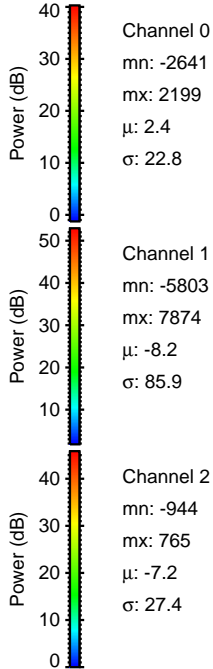
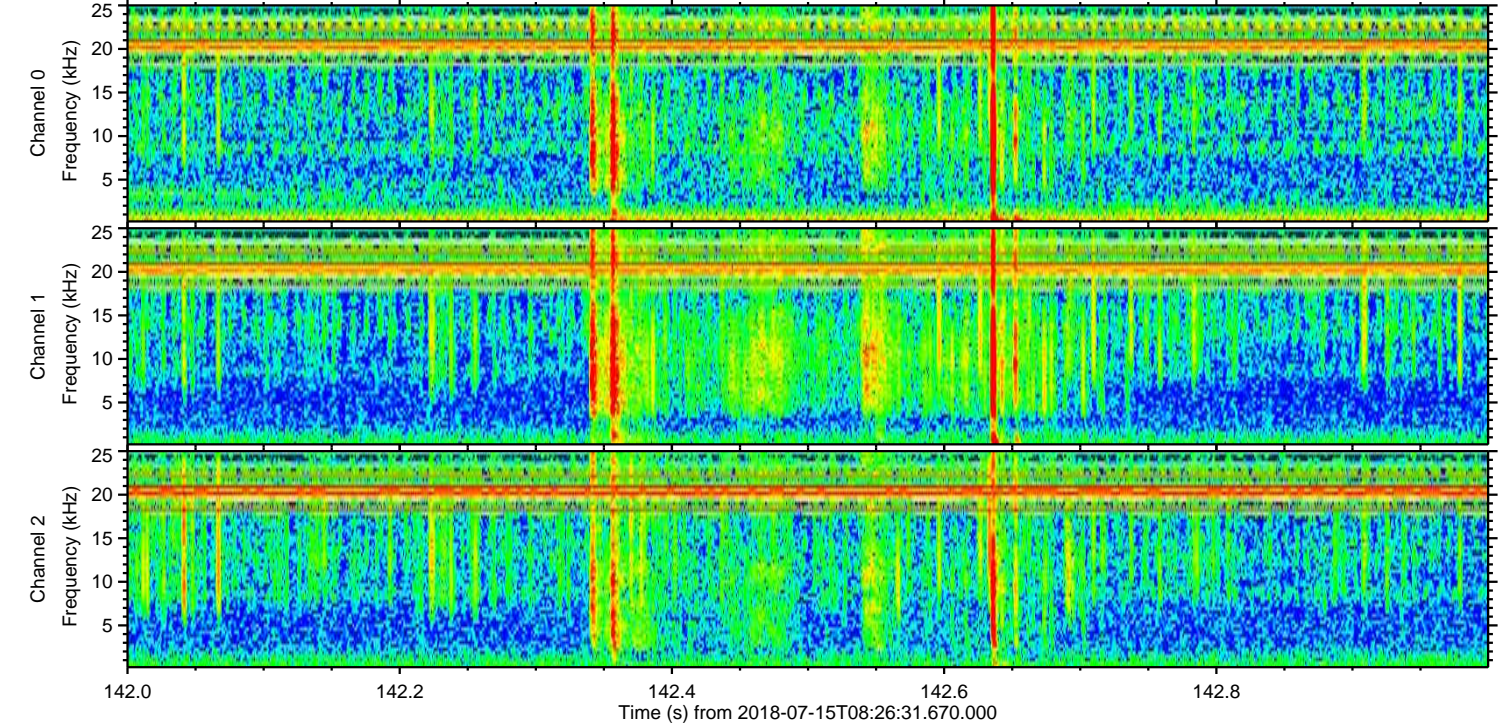
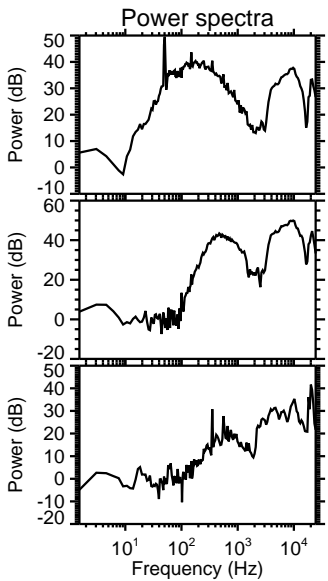
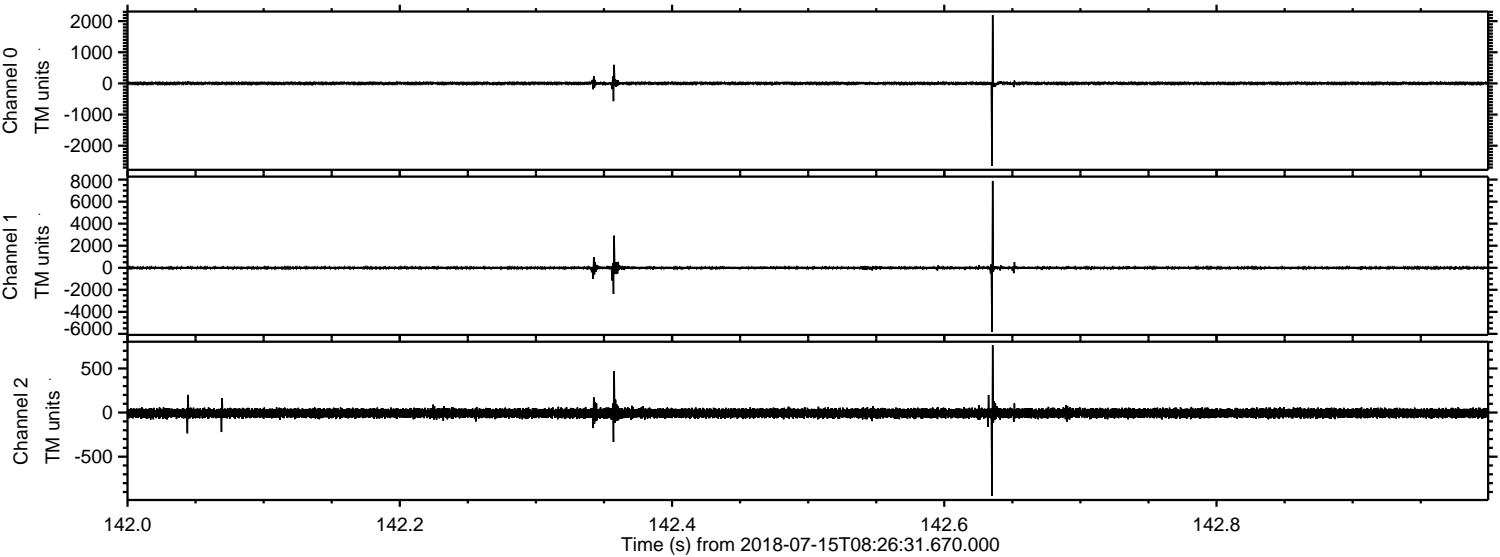
ELMAVAN 3D WAVEFORMS (Measured data sampled at 50 kHz) 50999 packets of 144 samples from 2018-07-15T08:26:31.670.000.

Processed Sun Jul 15 10:34:14 2018 by ELM ver.2012-10-06 from 001__elm20180715_082630__dat00.bin

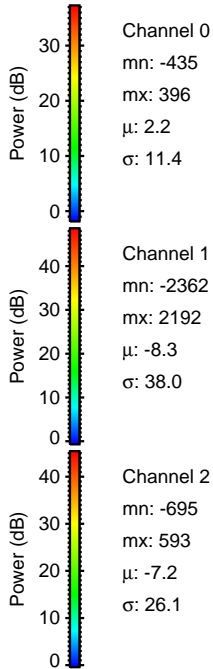
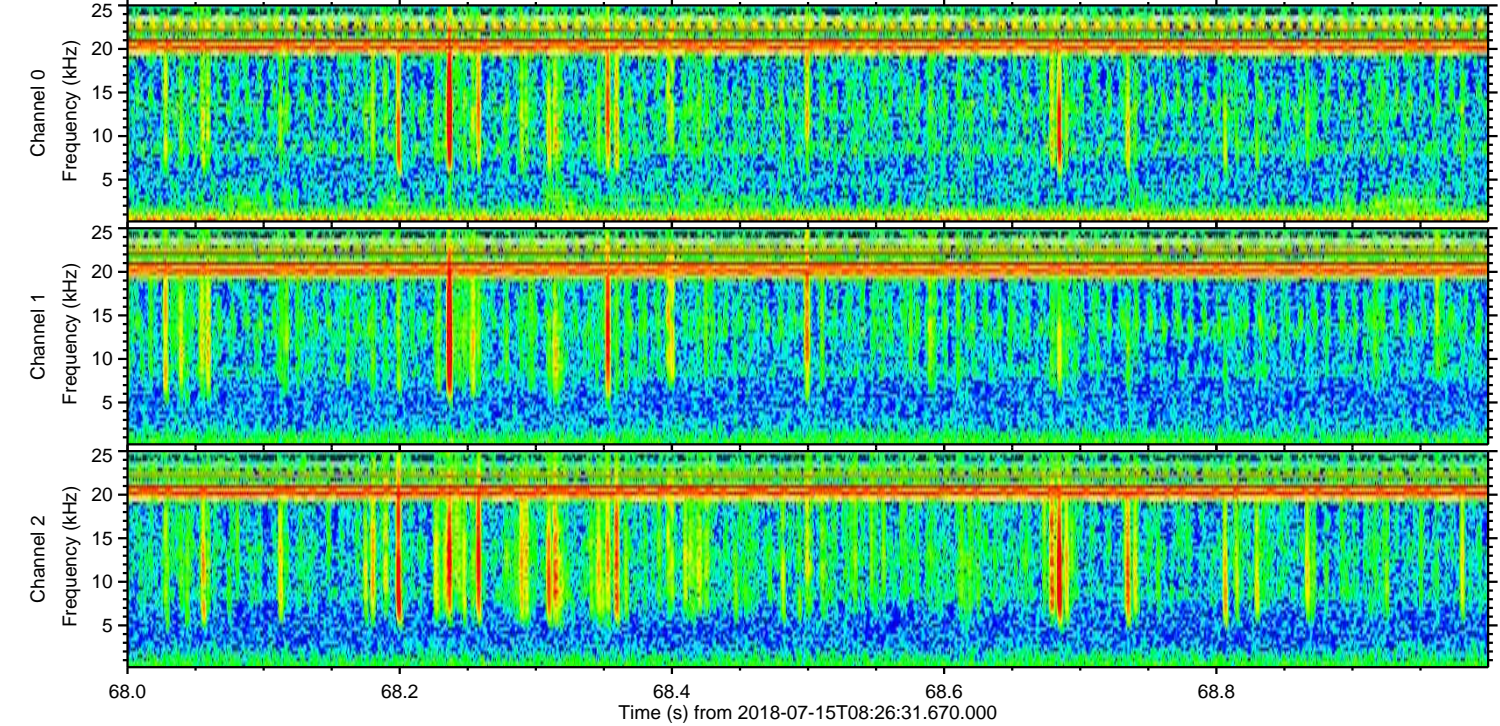
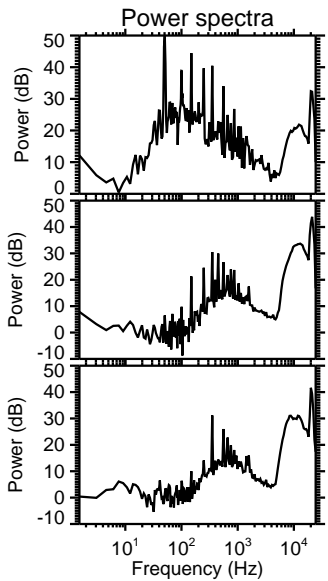
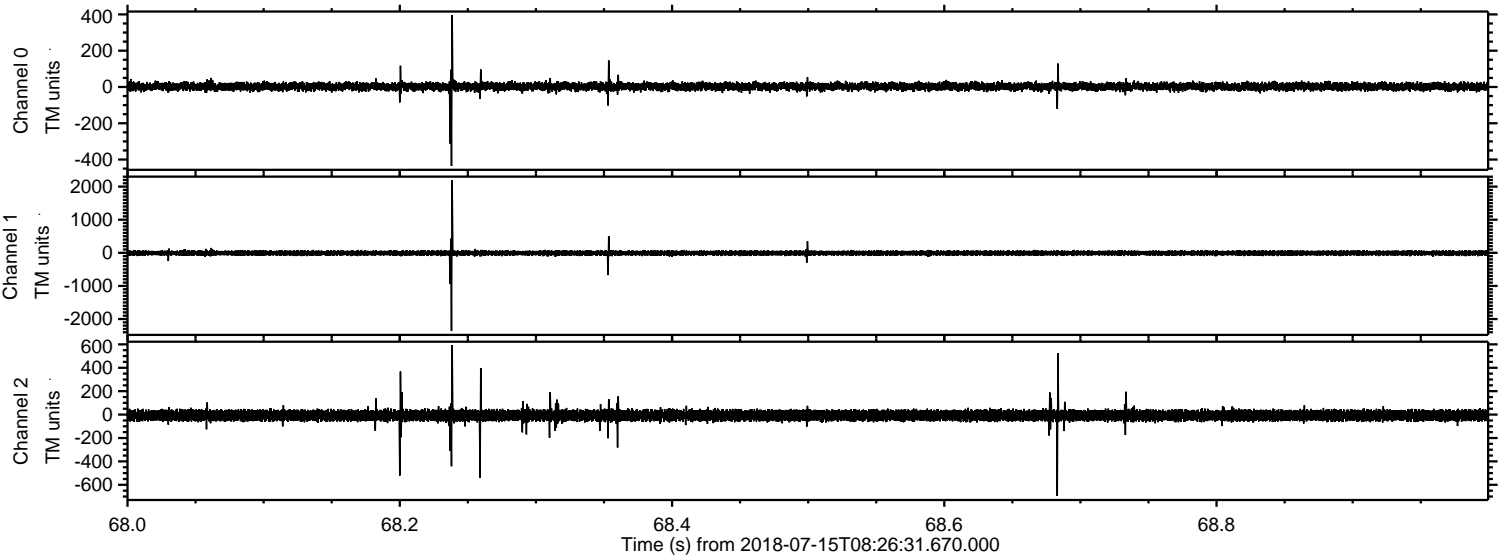


ELMAVAN 3D WAVEFORMS (Measured data sampled at 50 kHz) 50999 packets of 144 samples from 2018-07-15T08:26:31.670.000. Part 143/147

Processed Sun Jul 15 10:34:20 2018 by ELM ver.2012-10-06 from 001__elm20180715_082630__dat00.bin

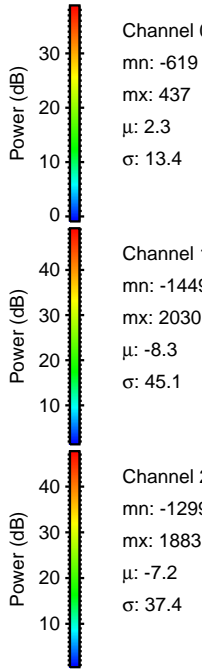
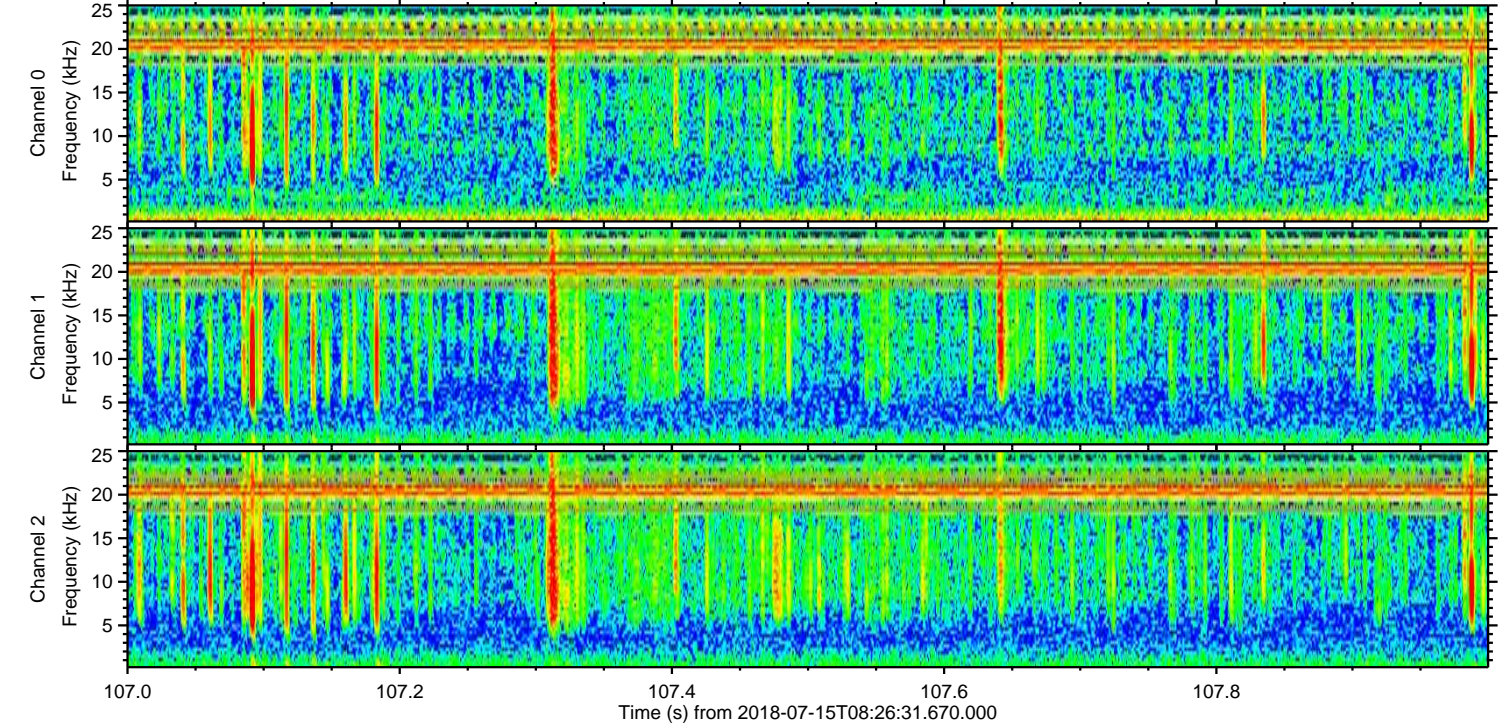
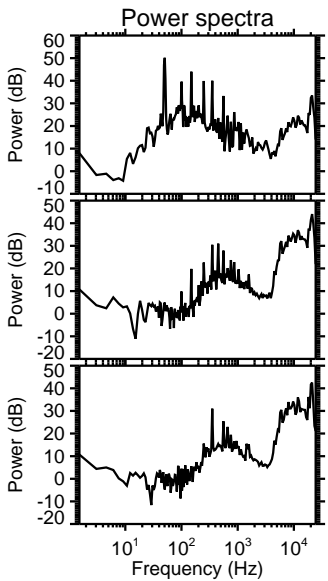
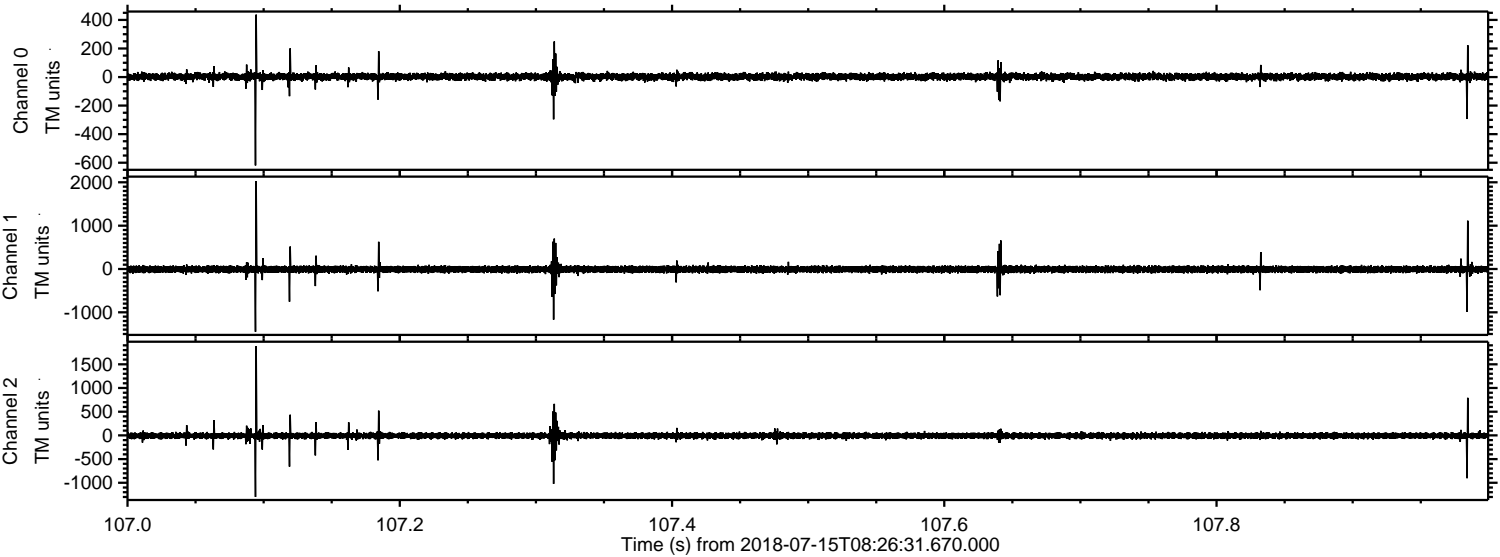


Processed Sun Jul 15 10:34:21 2018 by ELM ver.2012-10-06 from 001__elm20180715_082630__dat00.bin



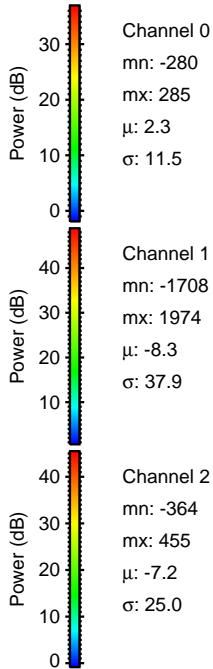
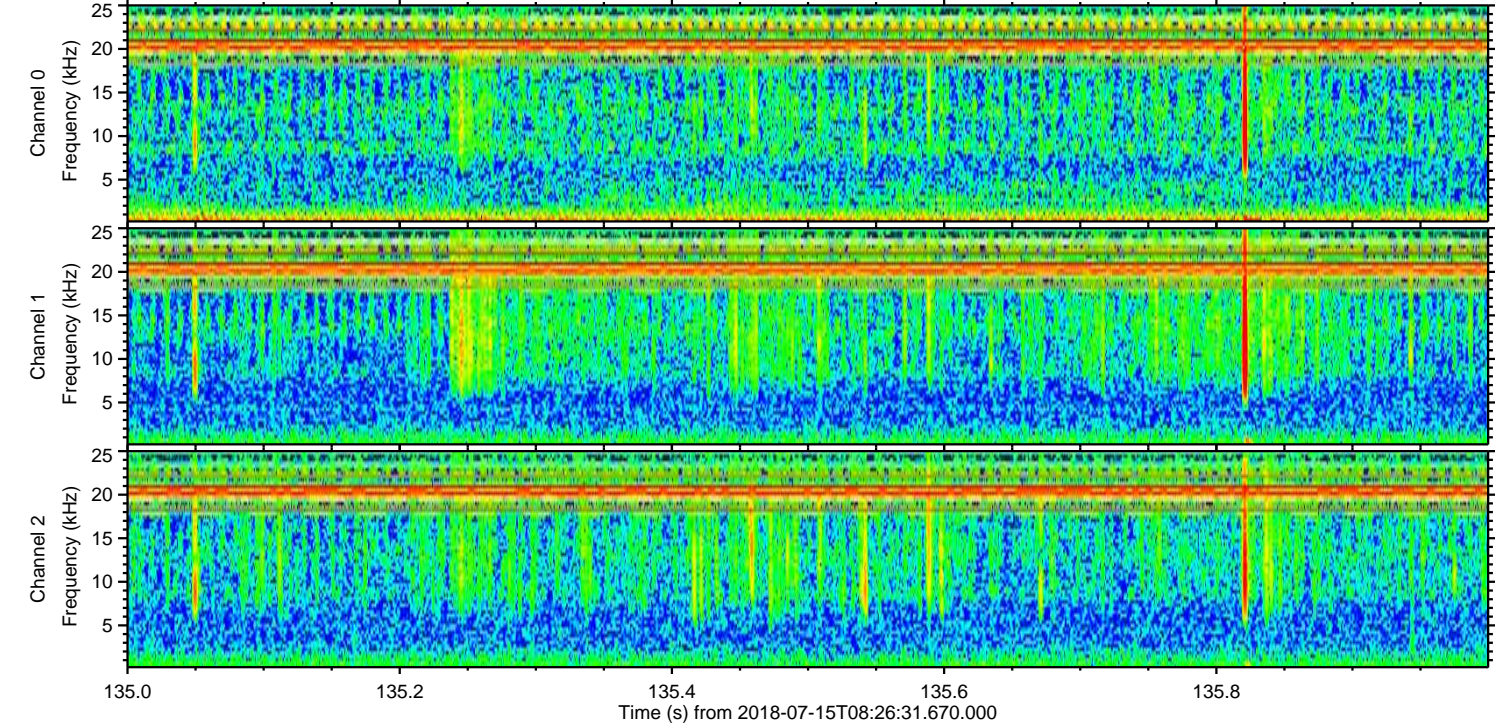
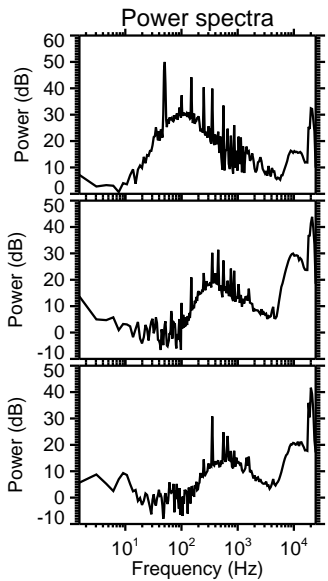
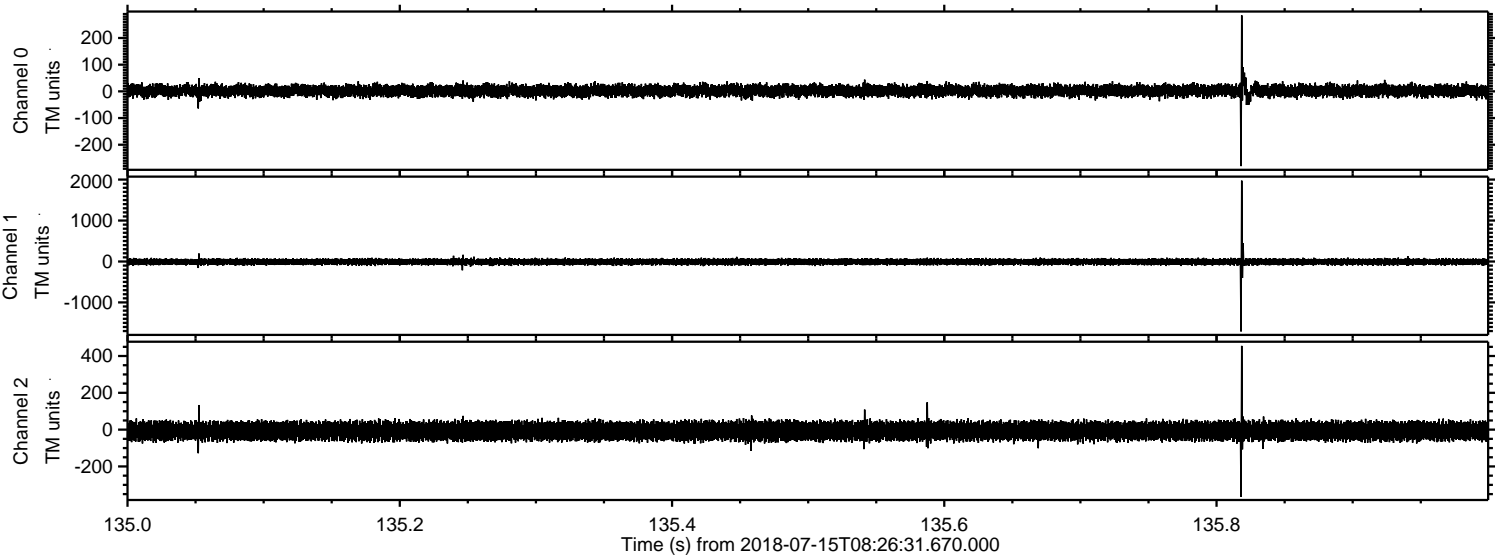
ELMAVAN 3D WAVEFORMS (Measured data sampled at 50 kHz) 50999 packets of 144 samples from 2018-07-15T08:26:31.670.000. Part 108/147

Processed Sun Jul 15 10:34:22 2018 by ELM ver.2012-10-06 from 001__elm20180715_082630__dat00.bin



ELMAVAN 3D WAVEFORMS (Measured data sampled at 50 kHz) 50999 packets of 144 samples from 2018-07-15T08:26:31.670.000. Part 136/147

Processed Sun Jul 15 10:34:22 2018 by ELM ver.2012-10-06 from 001__elm20180715_082630__dat00.bin

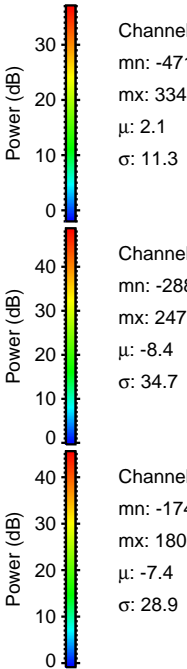
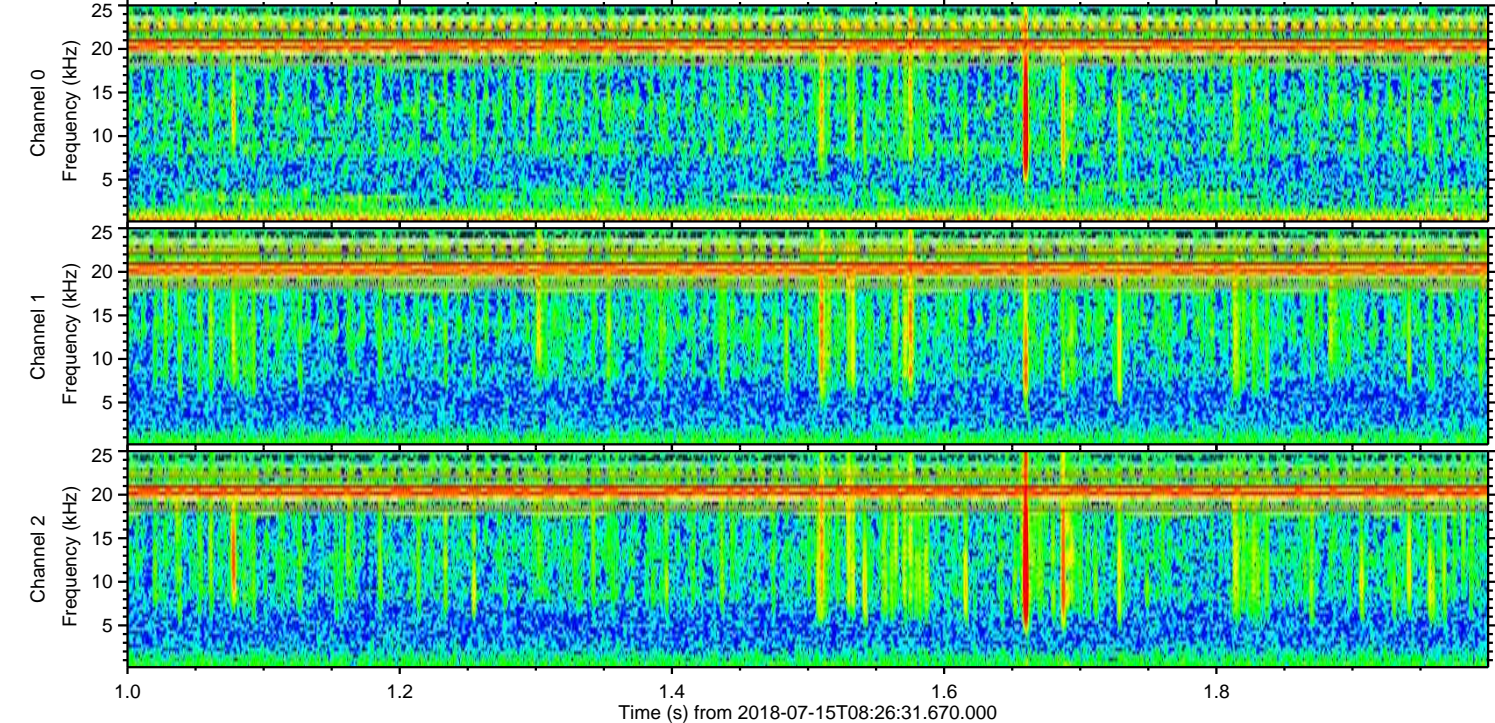
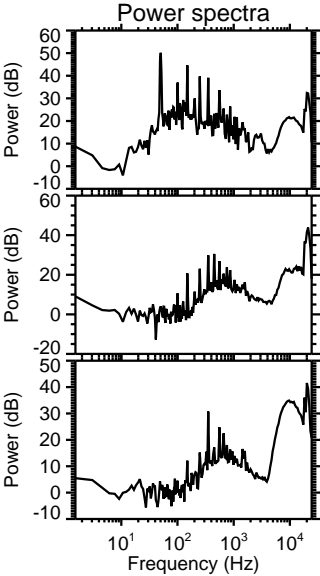
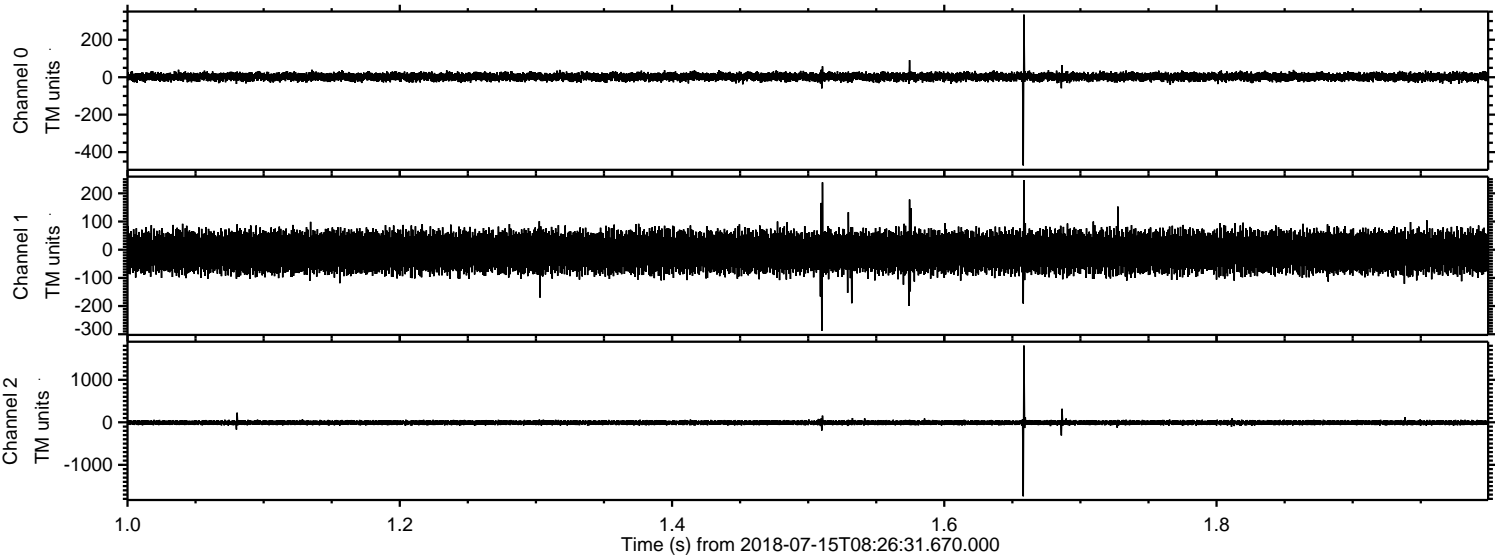


Channel 0
mn: -280
mx: 285
 μ : 2.3
 σ : 11.5

Channel 1
mn: -1708
mx: 1974
 μ : -8.3
 σ : 37.9

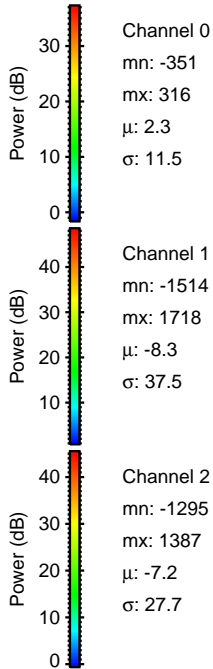
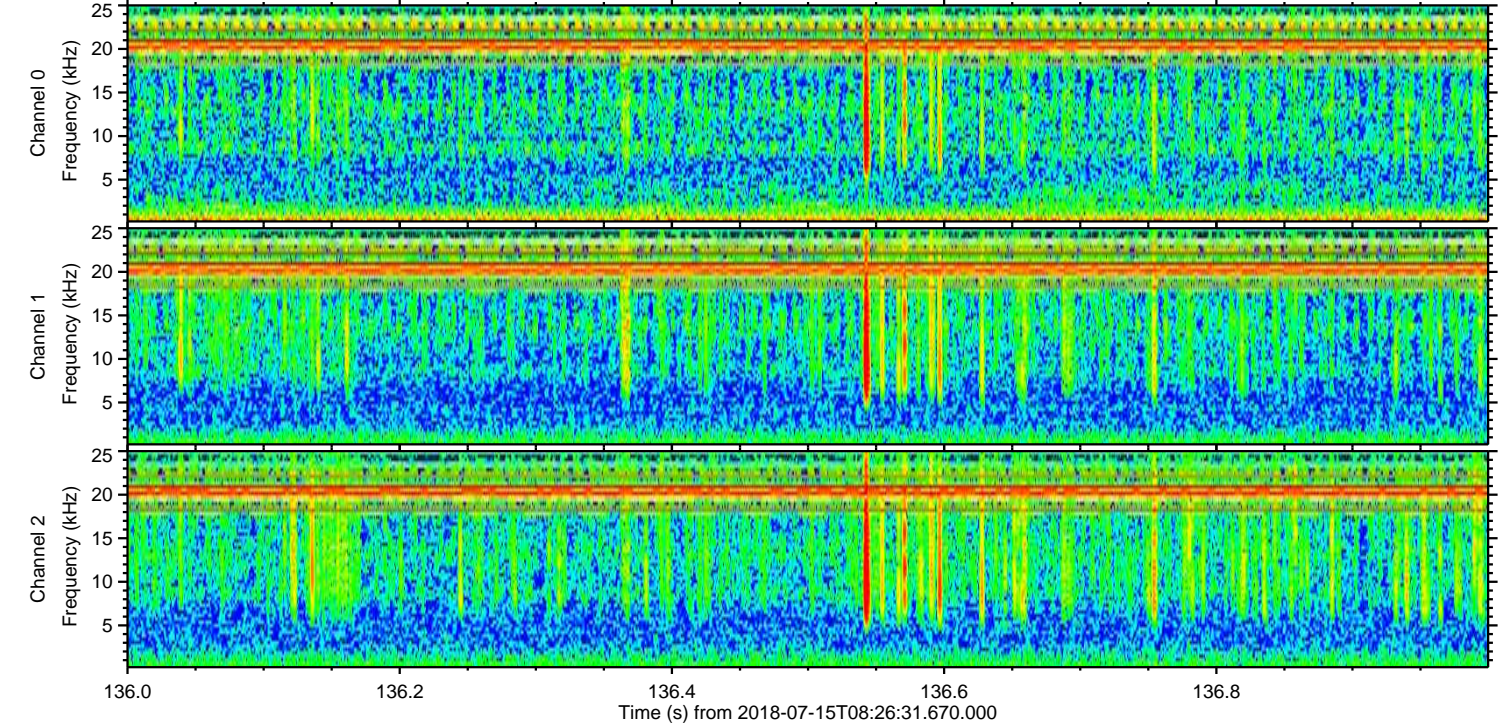
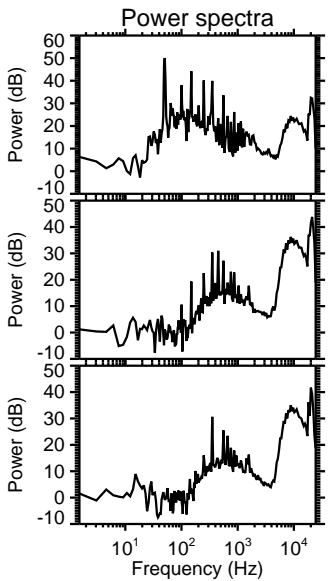
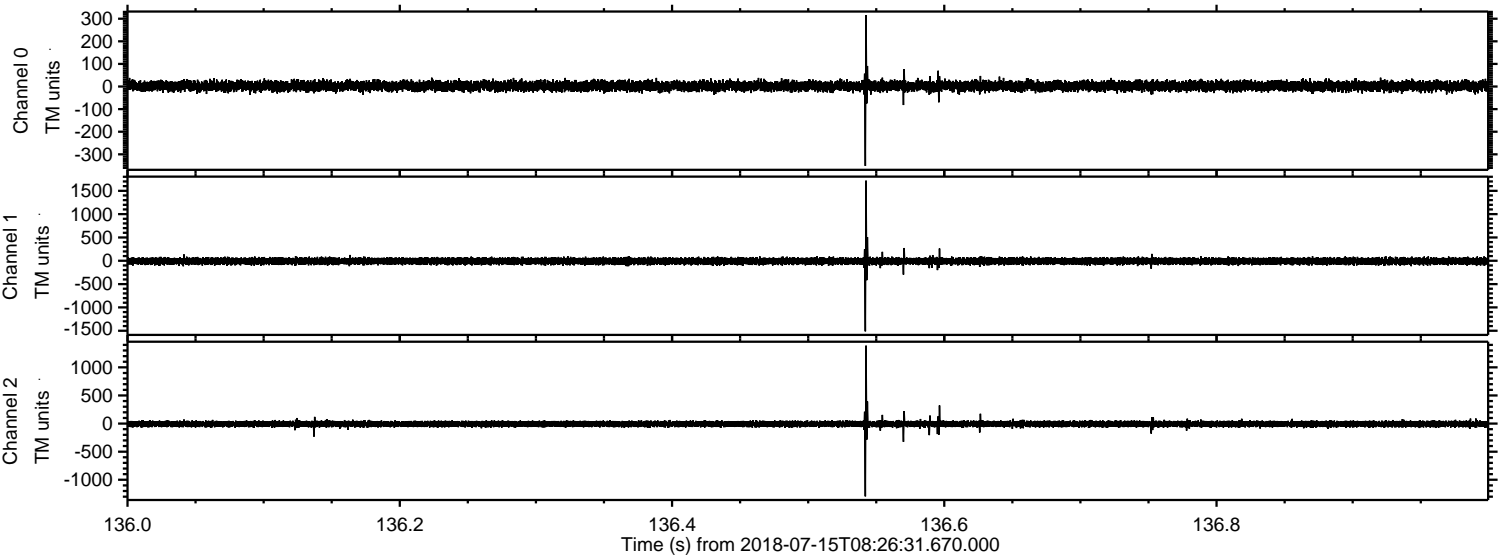
Channel 2
mn: -364
mx: 455
 μ : -7.2
 σ : 25.0

Processed Sun Jul 15 10:34:23 2018 by ELM ver.2012-10-06 from 001__elm20180715_082630__dat00.bin

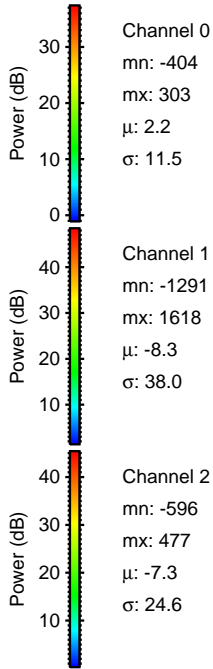
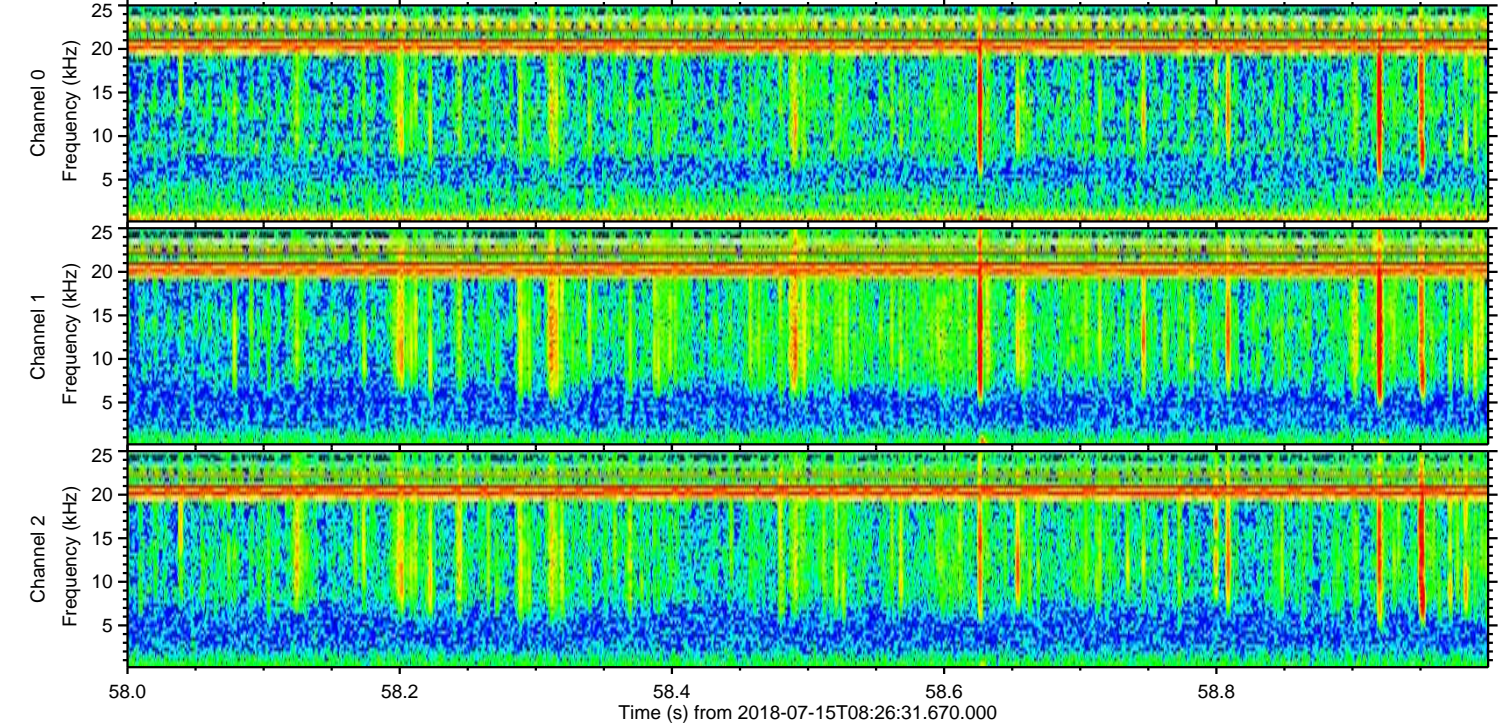
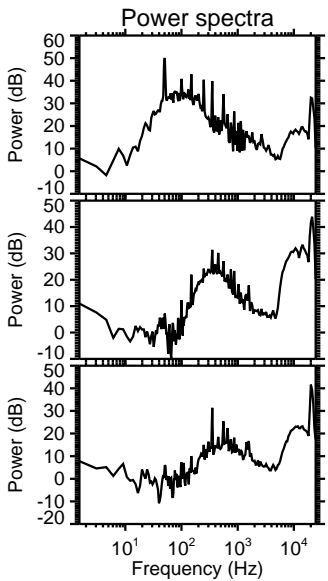
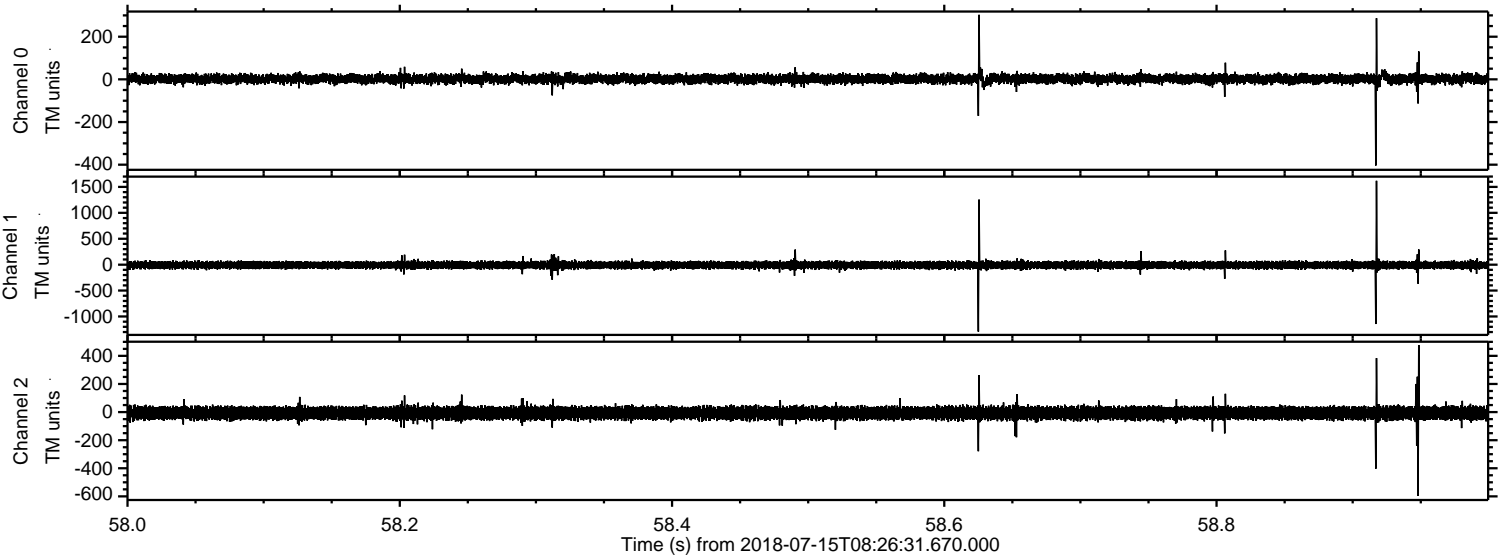


ELMAVAN 3D WAVEFORMS (Measured data sampled at 50 kHz) 50999 packets of 144 samples from 2018-07-15T08:26:31.670.000. Part 137/147

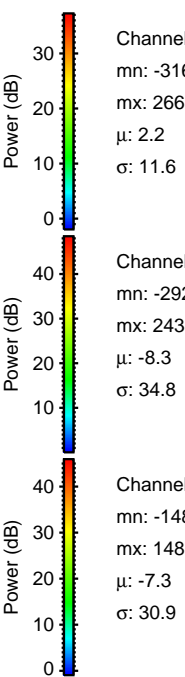
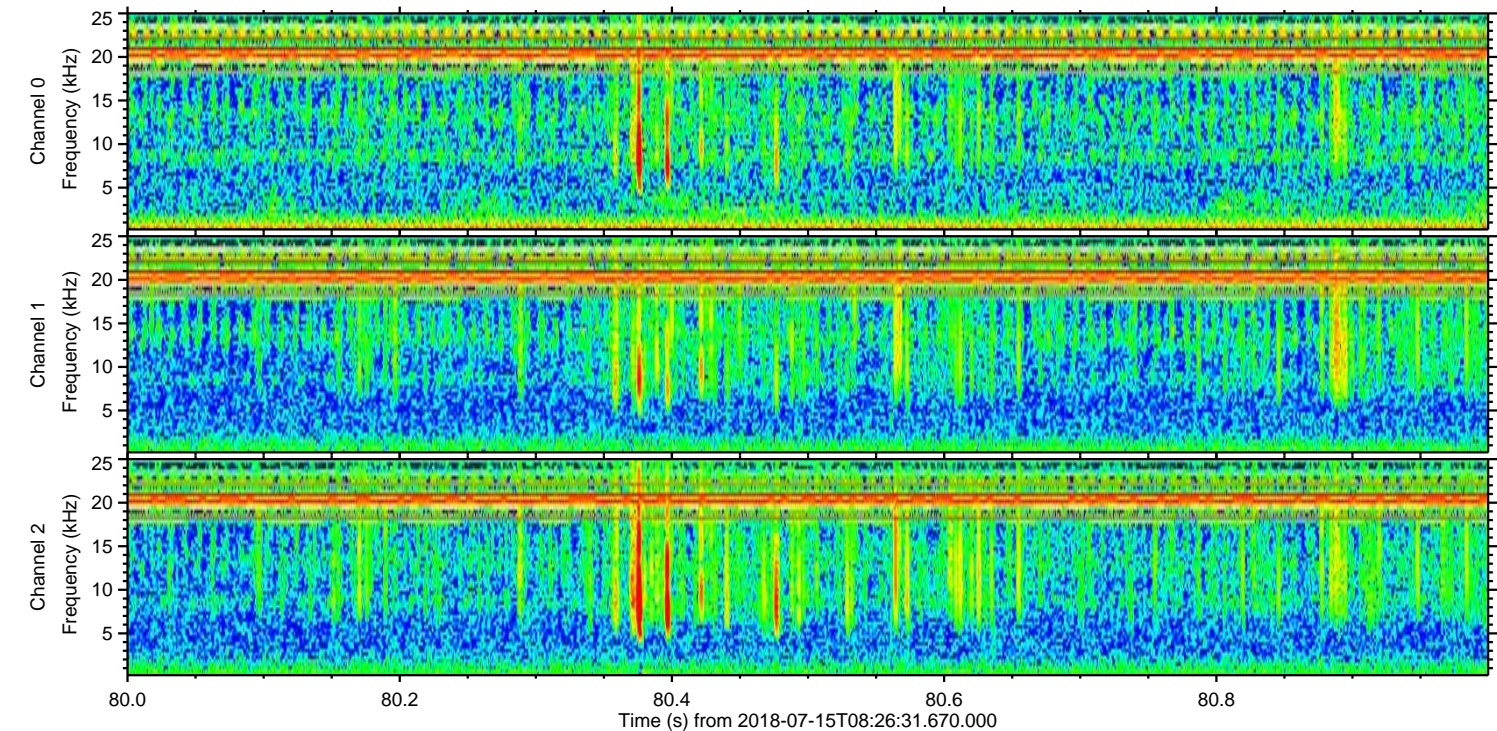
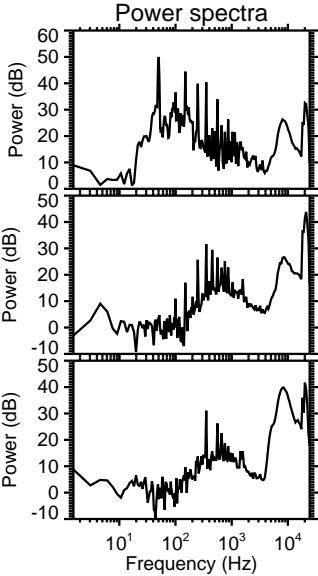
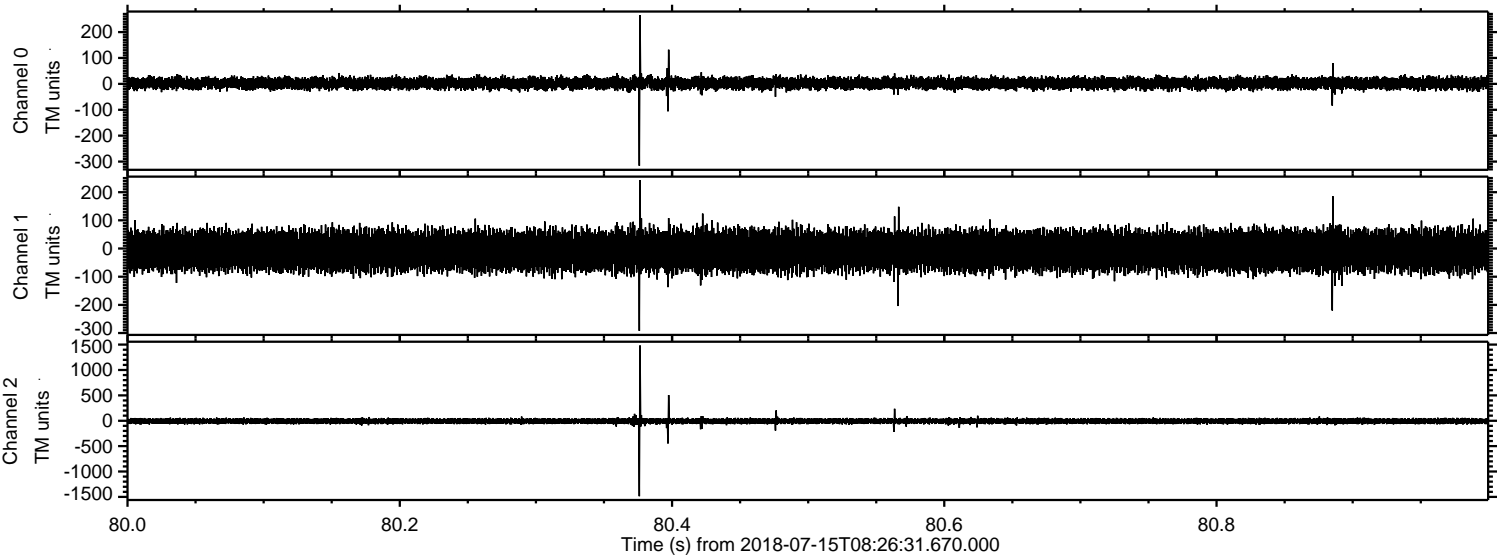
Processed Sun Jul 15 10:34:24 2018 by ELM ver.2012-10-06 from 001__elm20180715_082630__dat00.bin



Processed Sun Jul 15 10:34:24 2018 by ELM ver.2012-10-06 from 001__elm20180715_082630__dat00.bin



Processed Sun Jul 15 10:34:25 2018 by ELM ver.2012-10-06 from 001__elm20180715_082630__dat00.bin

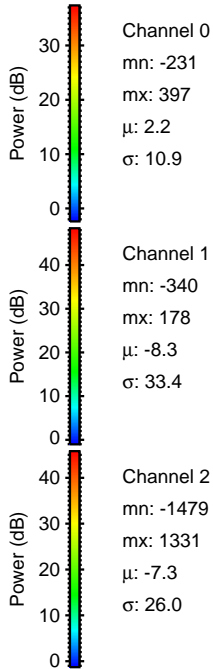
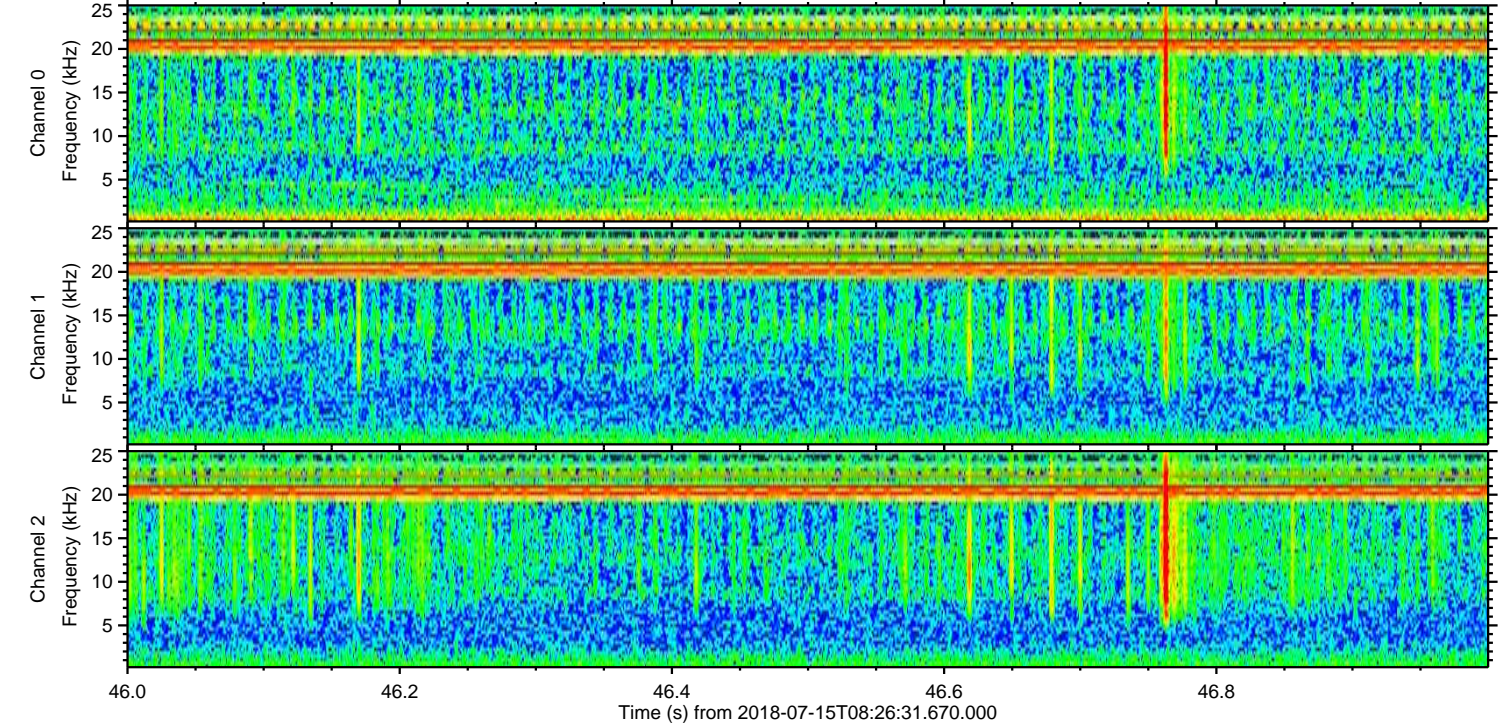
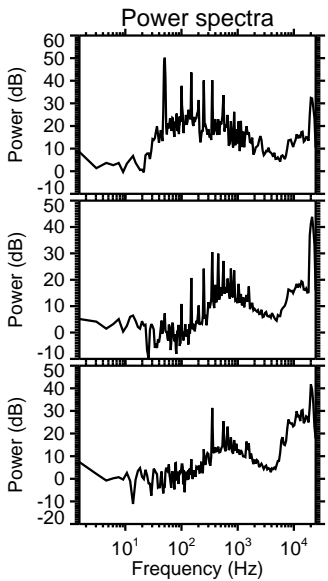
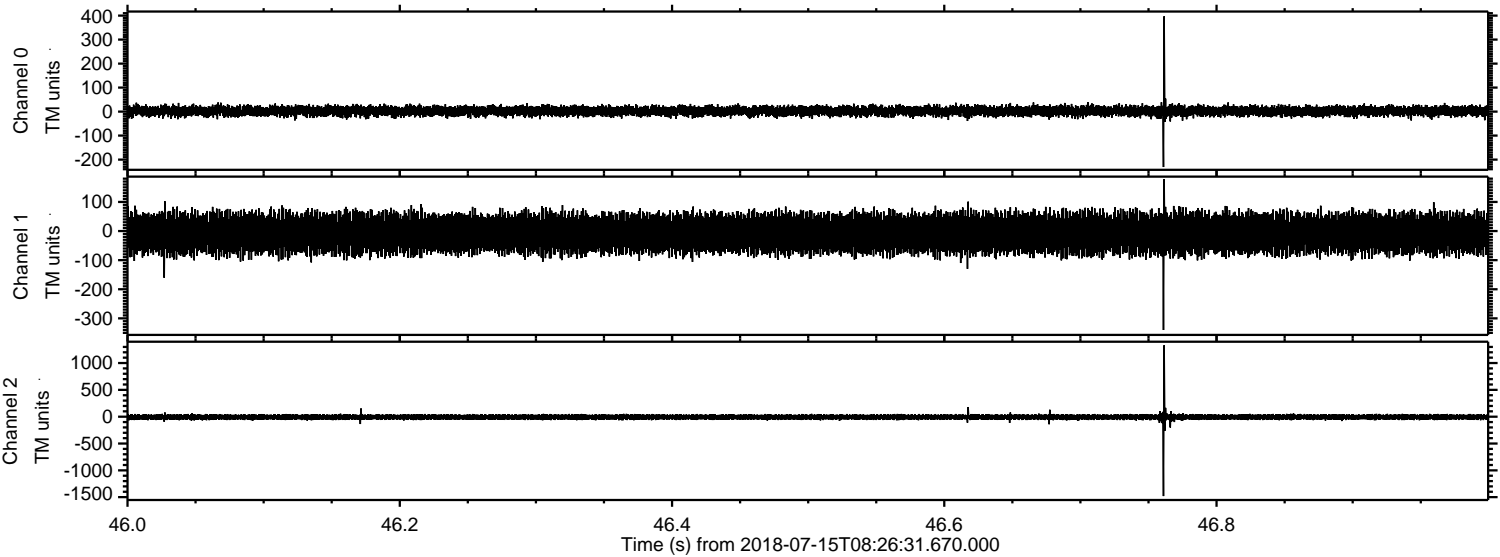


Channel 0
mn: -316
mx: 266
 μ : 2.2
 σ : 11.6

Channel 1
mn: -292
mx: 243
 μ : -8.3
 σ : 34.8

Channel 2
mn: -1487
mx: 1483
 μ : -7.3
 σ : 30.9

Processed Sun Jul 15 10:34:26 2018 by ELM ver.2012-10-06 from 001__elm20180715_082630__dat00.bin



Processed Sun Jul 15 10:34:26 2018 by ELM ver.2012-10-06 from 001__elm20180715_082630__dat00.bin

