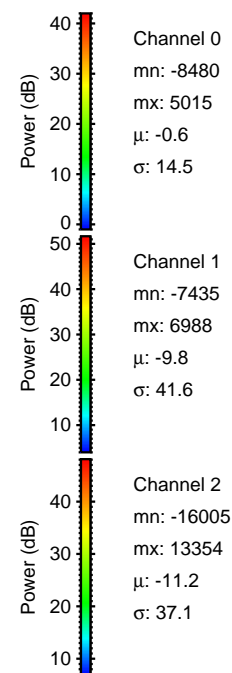
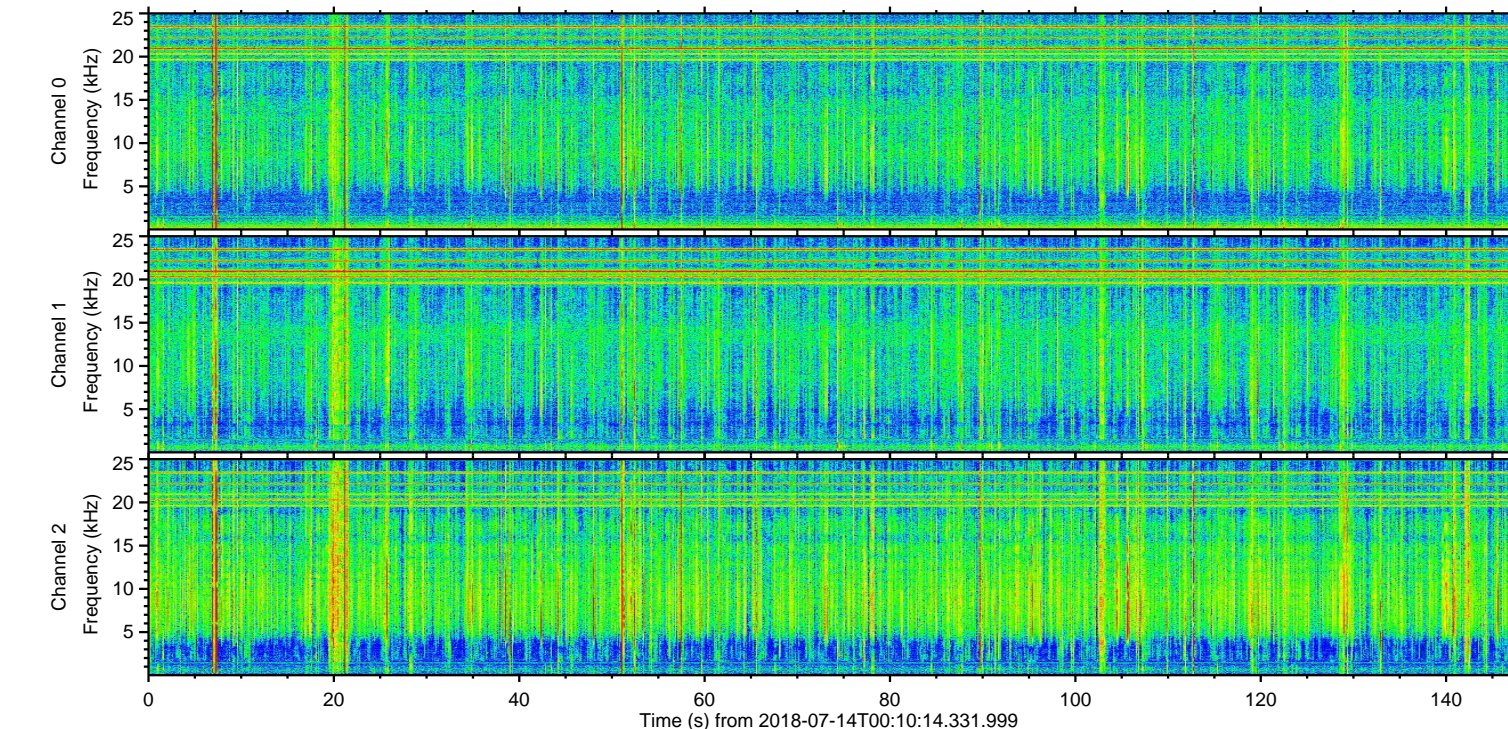
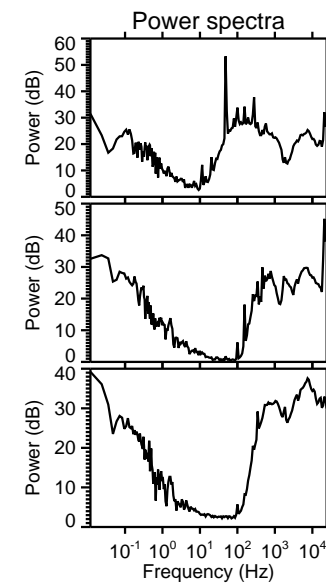
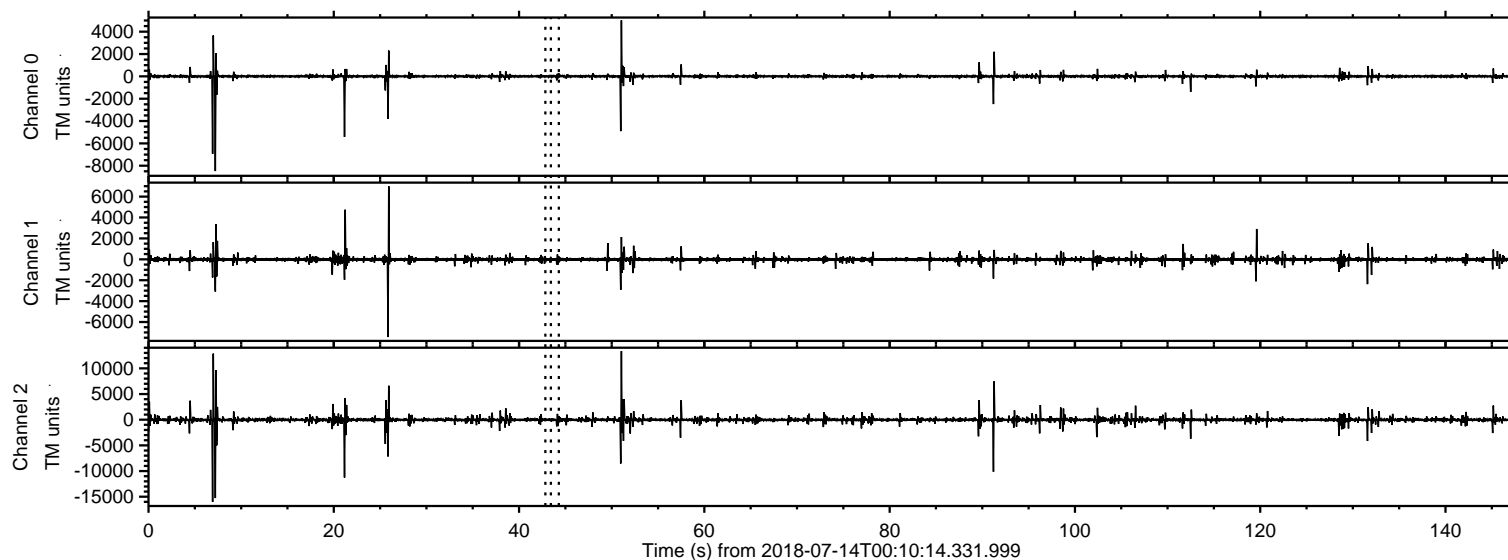


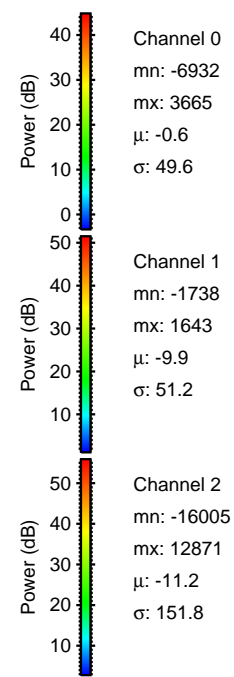
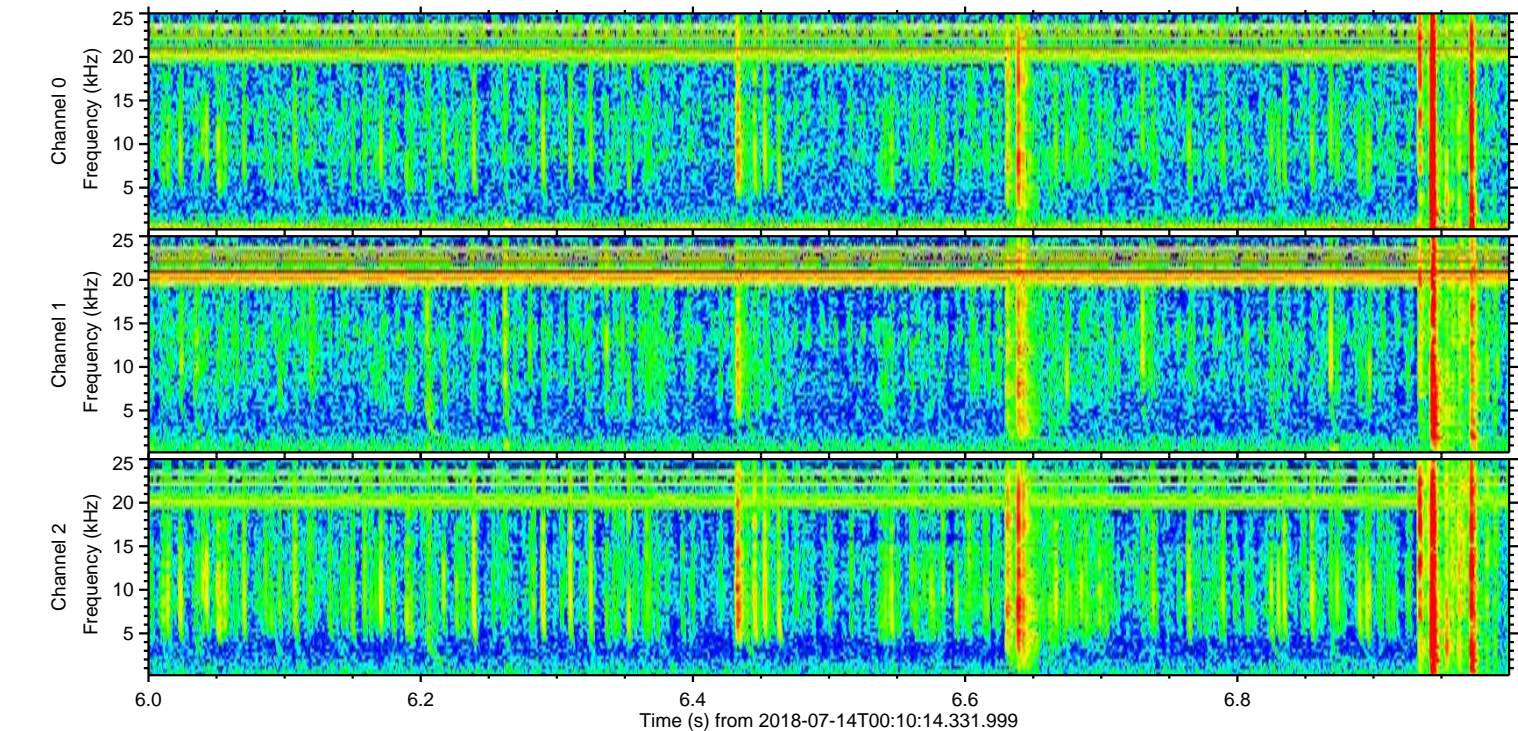
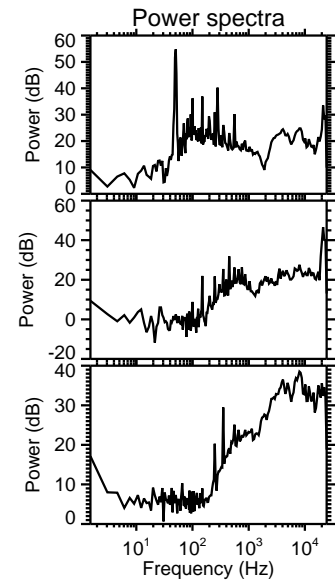
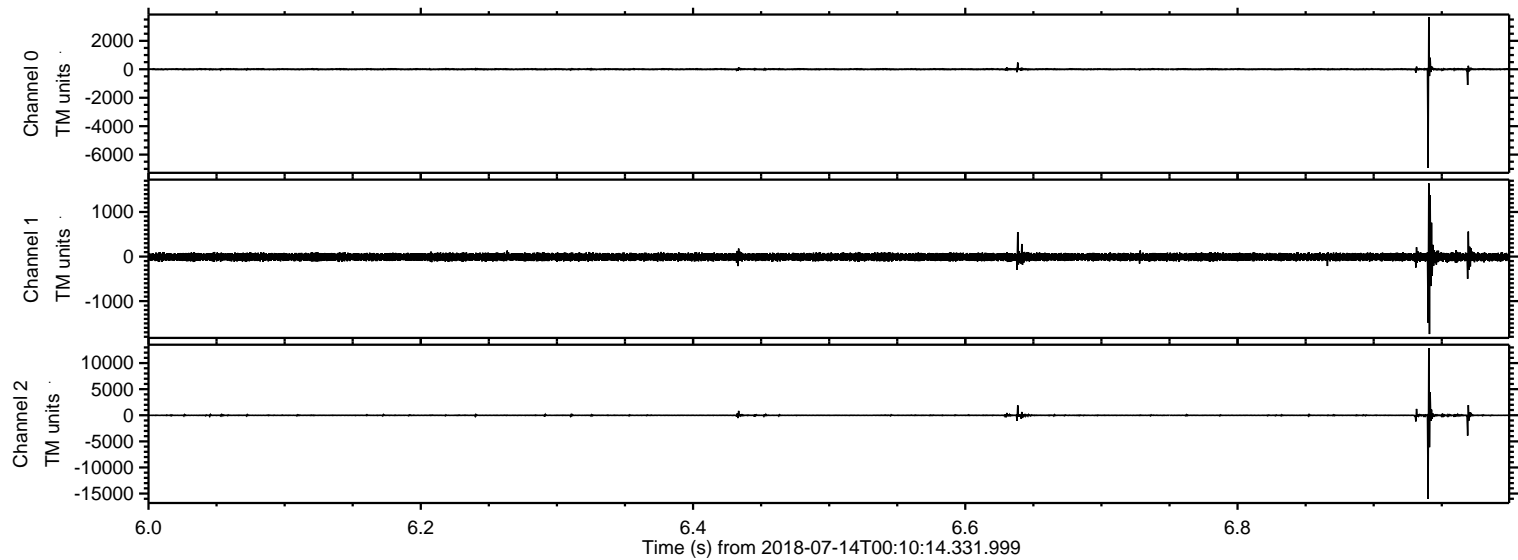
ELMAVAN 3D WAVEFORMS (Measured data sampled at 50 kHz) 50997 packets of 144 samples from 2018-07-14T00:10:14.331.999.

Processed Sat Jul 14 02:17:39 2018 by ELM ver.2012-10-06 from 001__elm20180714_001013__dat00.bin

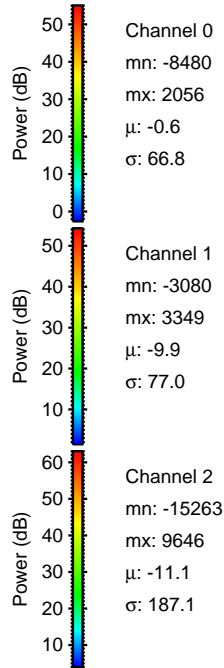
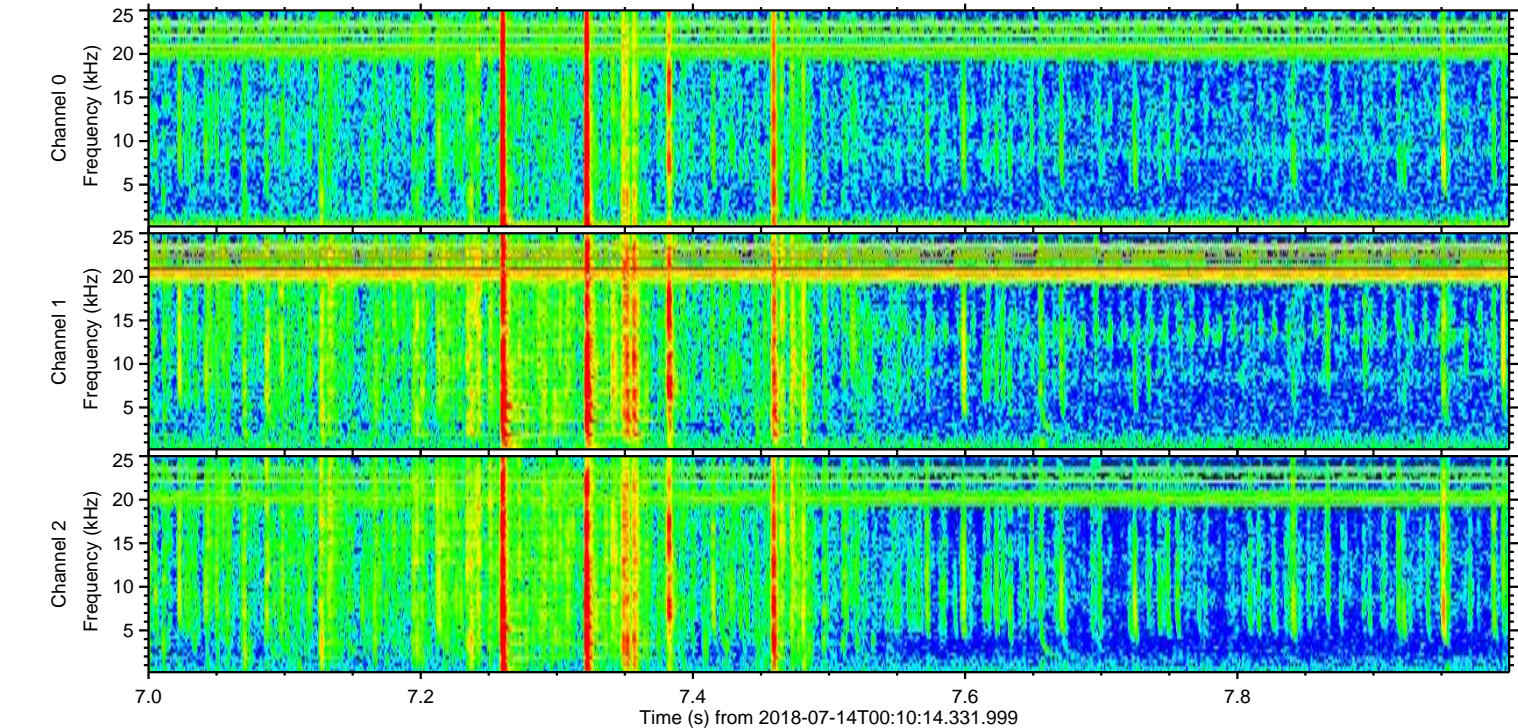
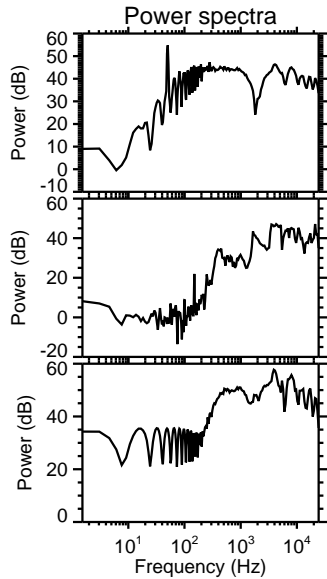
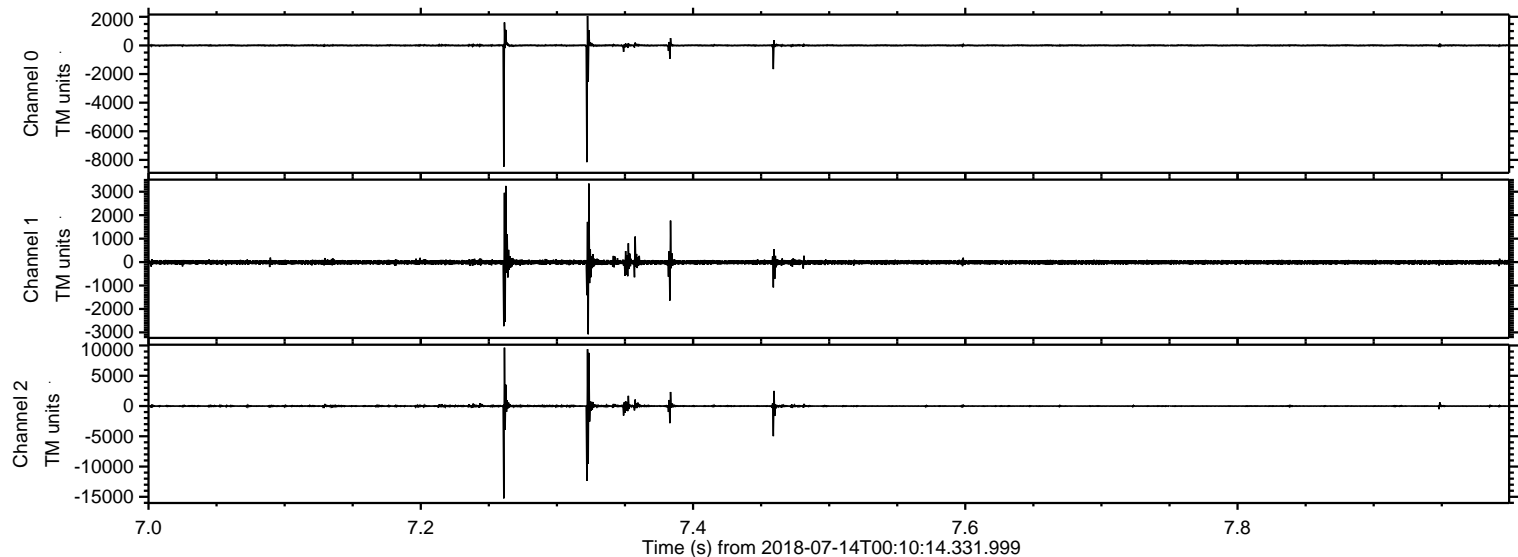


ELMAVAN 3D WAVEFORMS (Measured data sampled at 50 kHz) 50997 packets of 144 samples from 2018-07-14T00:10:14.331.999. Part 7/147

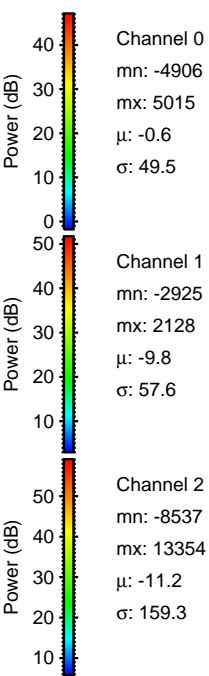
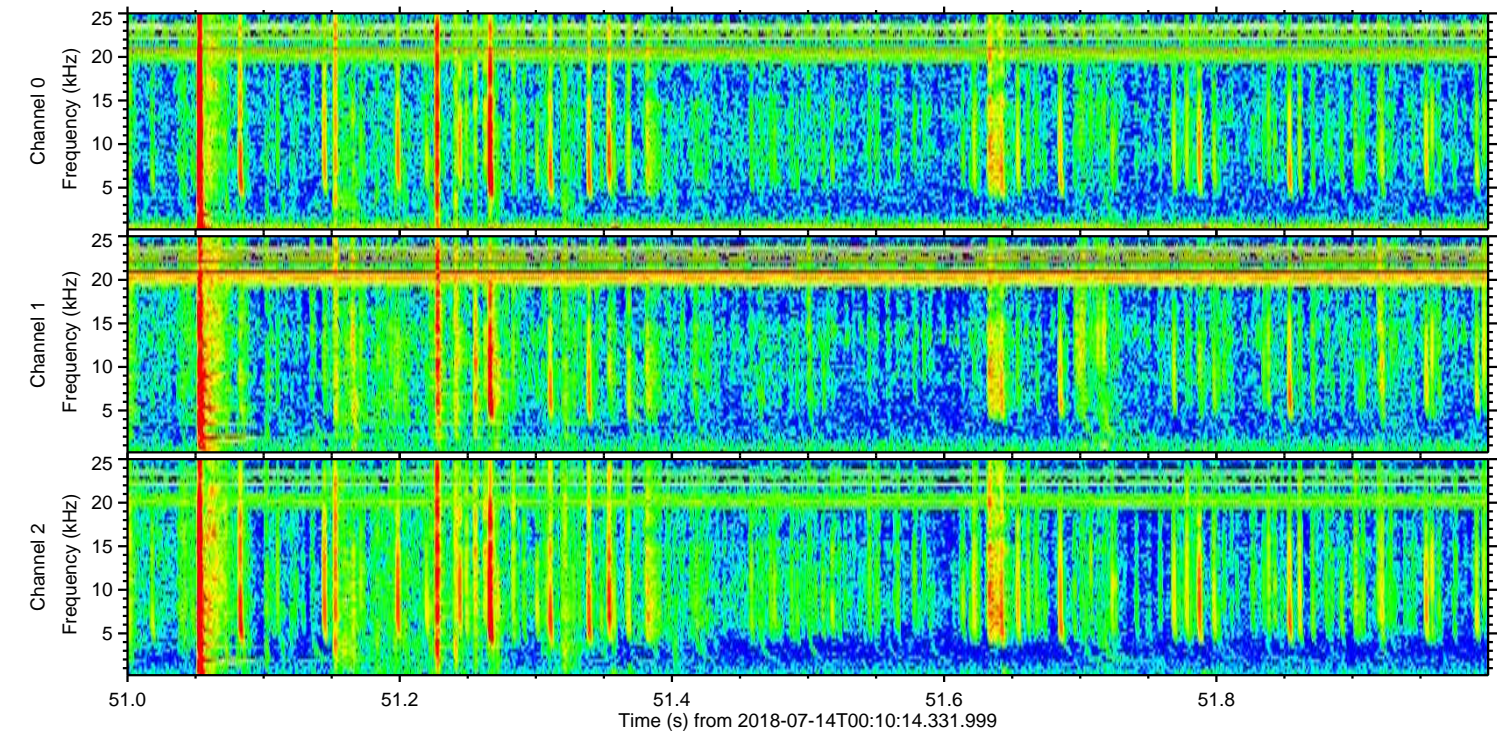
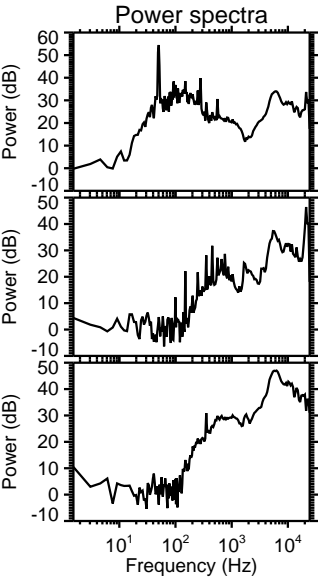
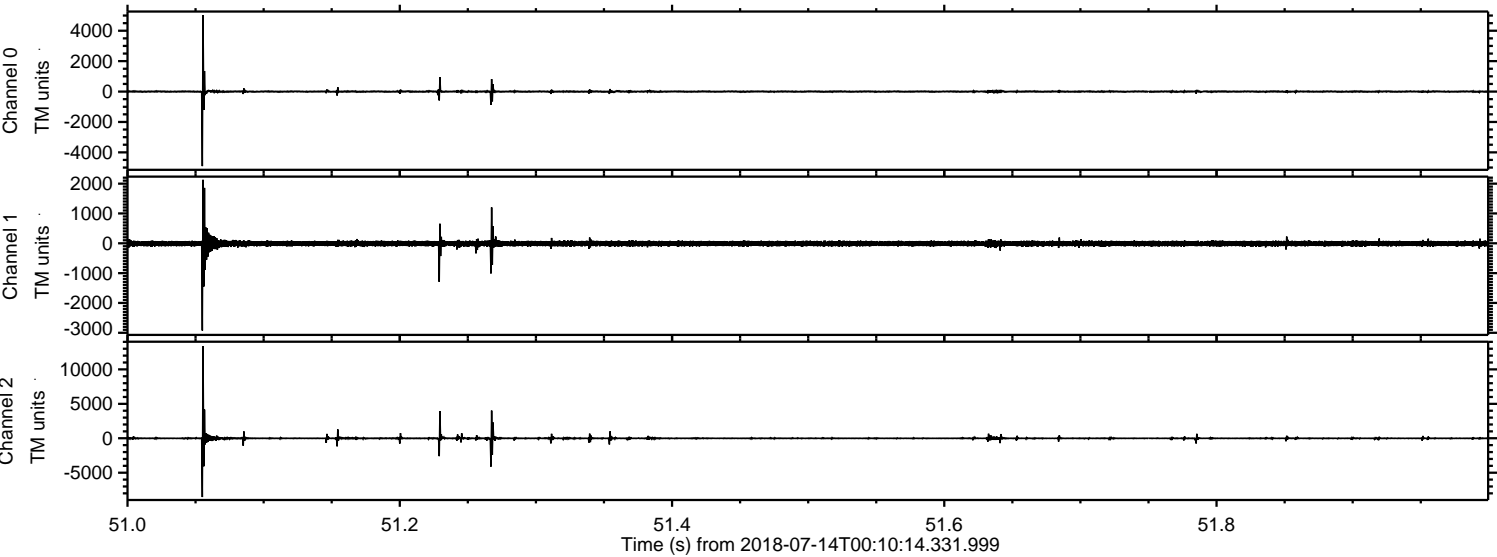
Processed Sat Jul 14 02:17:44 2018 by ELM ver.2012-10-06 from 001__elm20180714_001013__dat00.bin



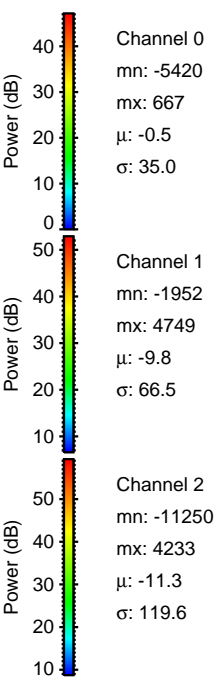
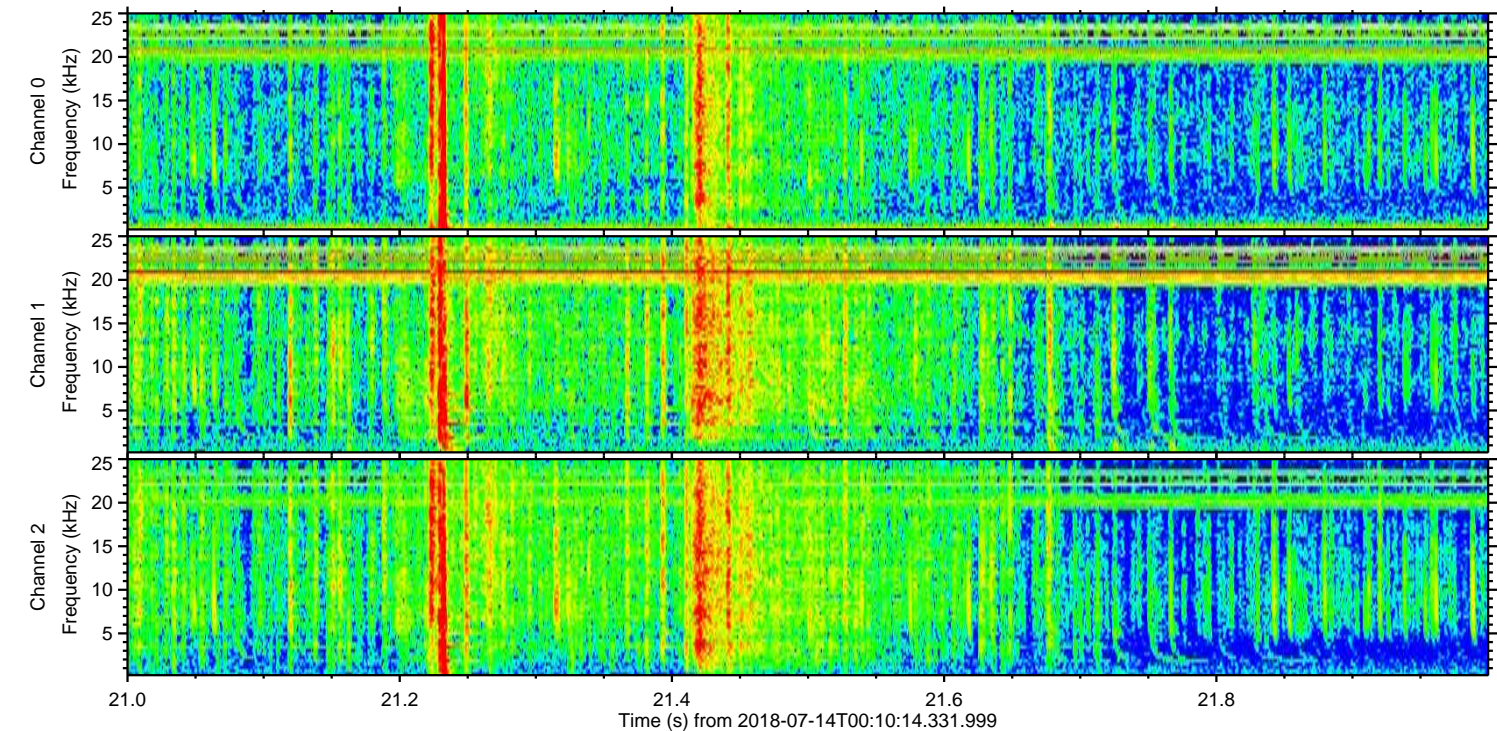
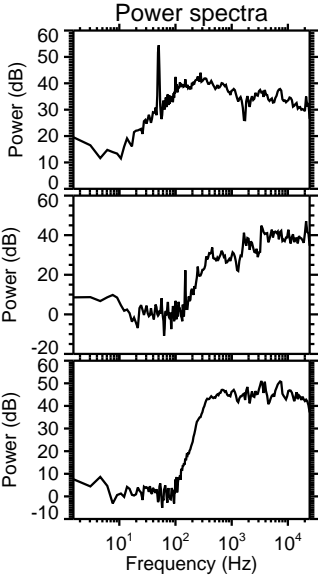
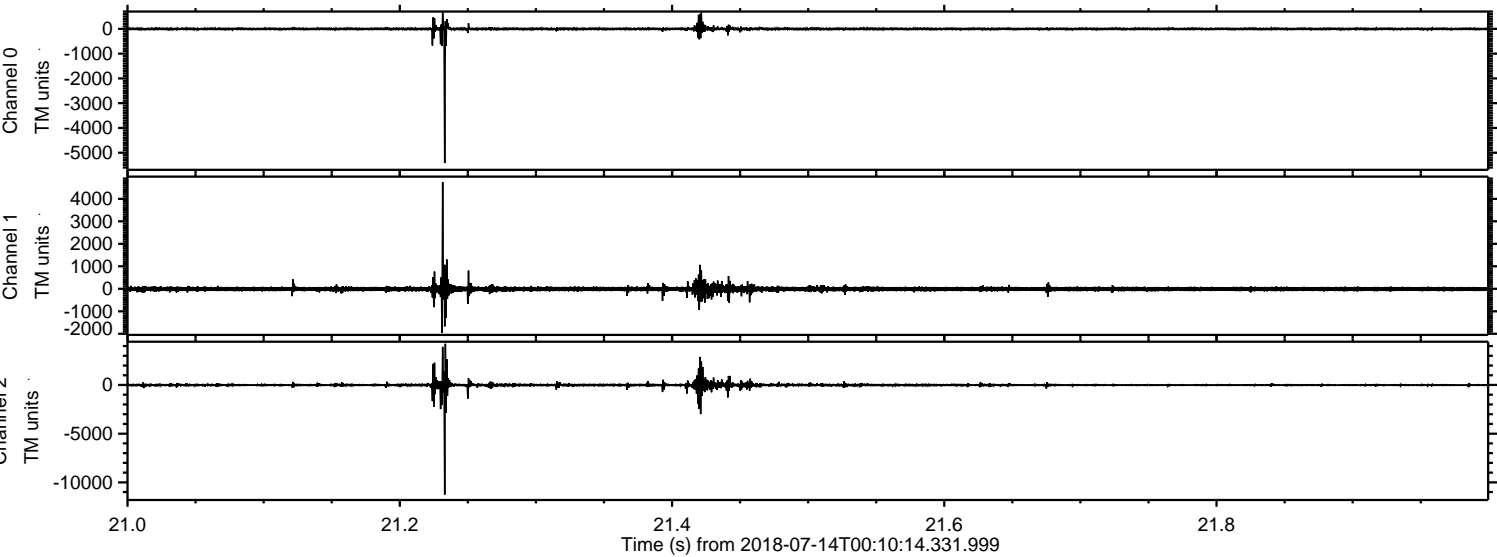
Processed Sat Jul 14 02:17:45 2018 by ELM ver.2012-10-06 from 001__elm20180714_001013__dat00.bin



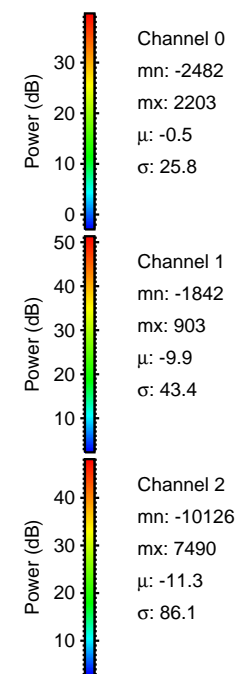
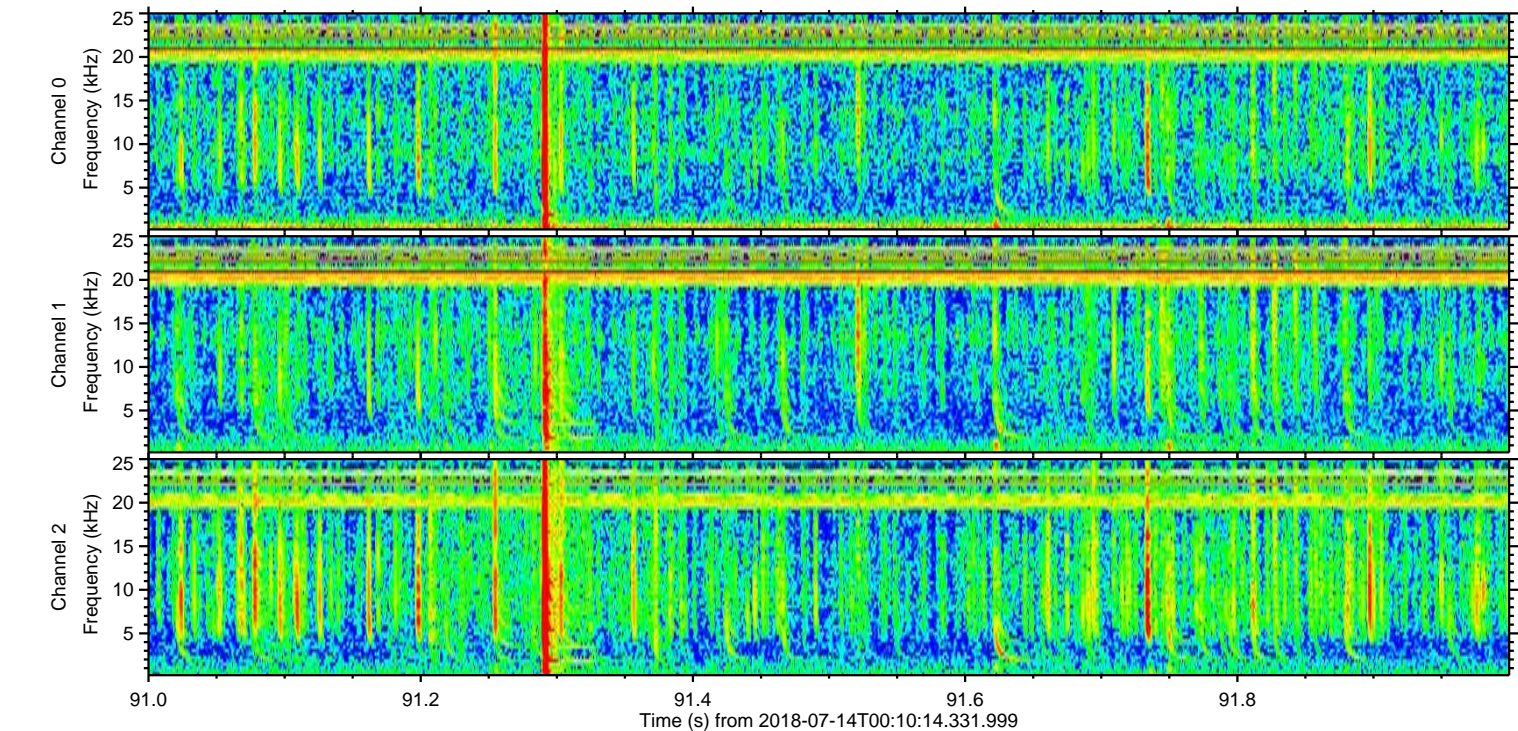
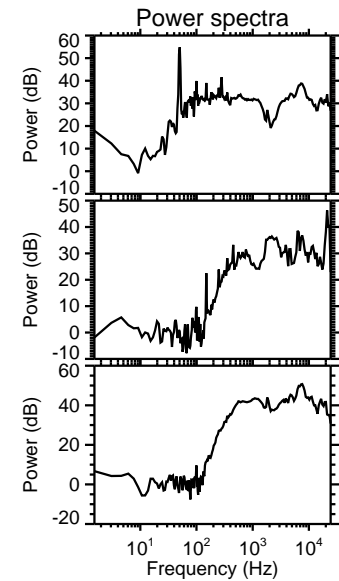
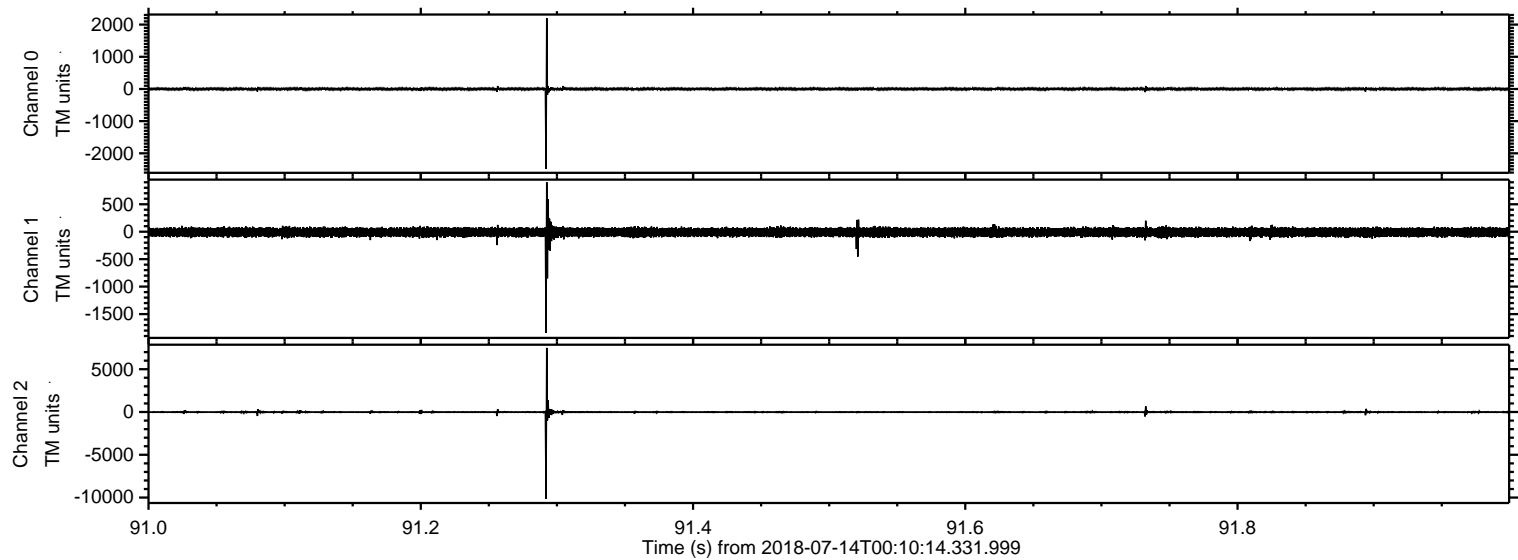
Processed Sat Jul 14 02:17:46 2018 by ELM ver.2012-10-06 from 001__elm20180714_001013__dat00.bin



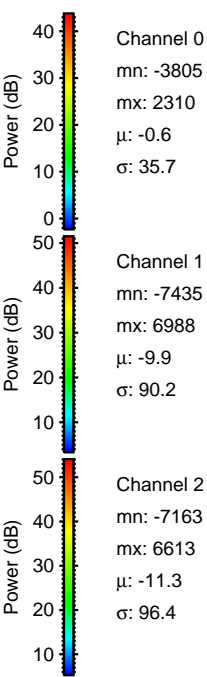
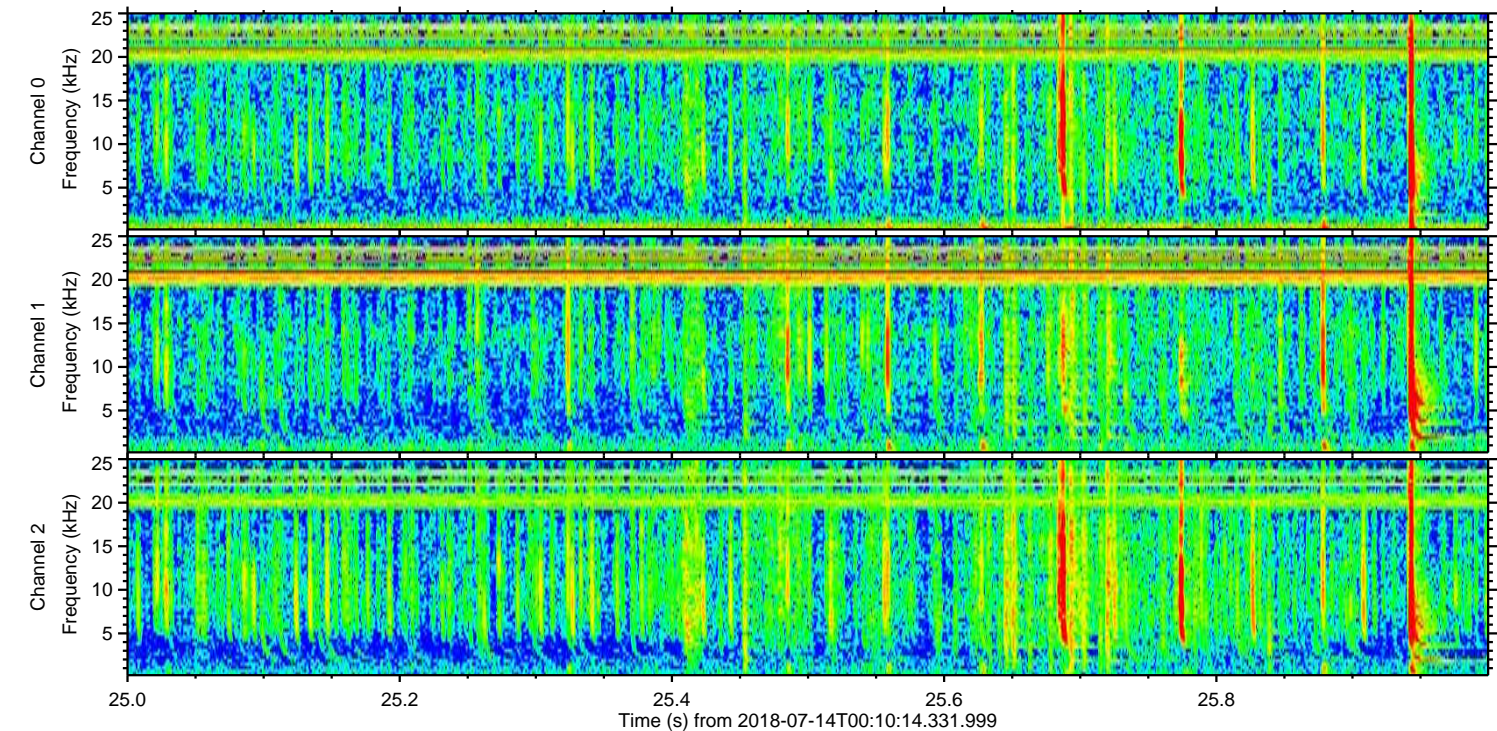
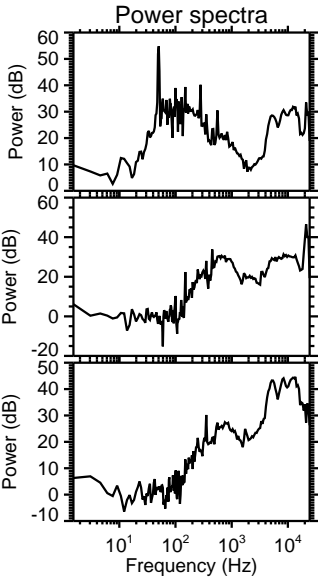
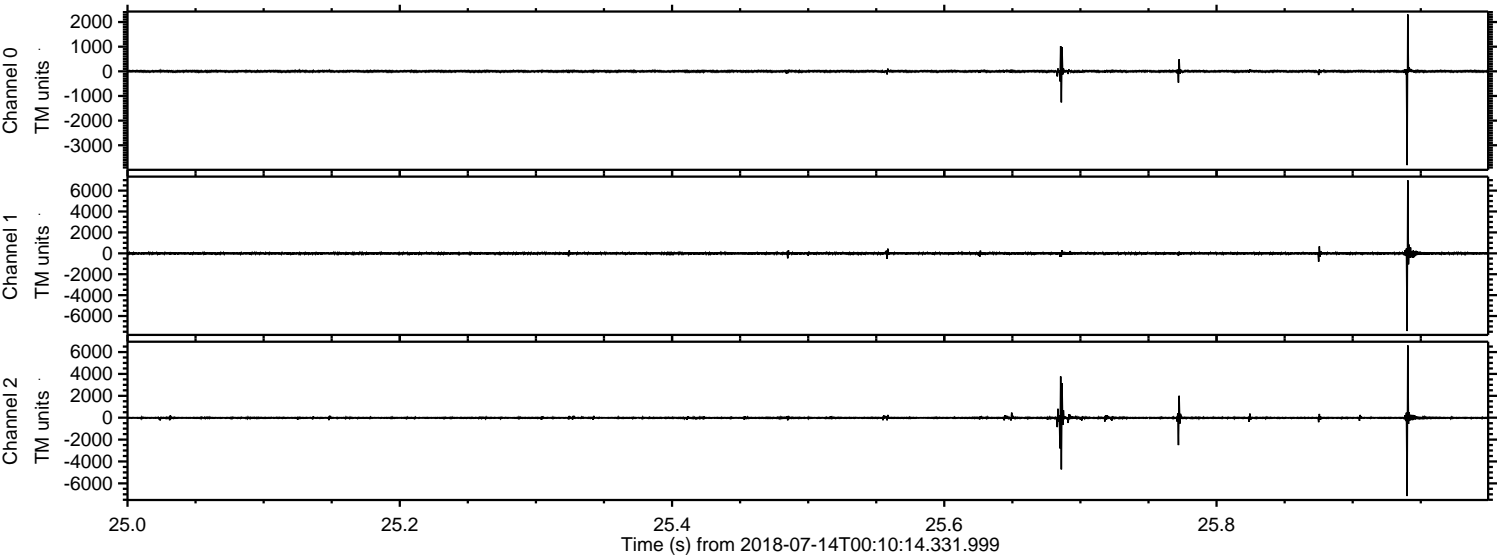
Processed Sat Jul 14 02:17:46 2018 by ELM ver.2012-10-06 from 001__elm20180714_001013__dat00.bin



Processed Sat Jul 14 02:17:47 2018 by ELM ver.2012-10-06 from 001__elm20180714_001013__dat00.bin



Processed Sat Jul 14 02:17:48 2018 by ELM ver.2012-10-06 from 001__elm20180714_001013__dat00.bin



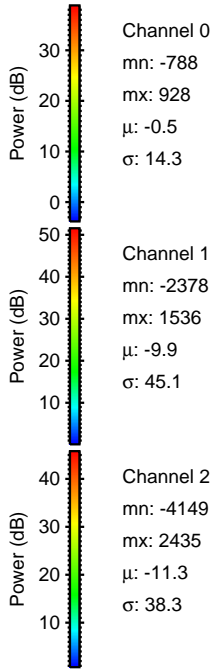
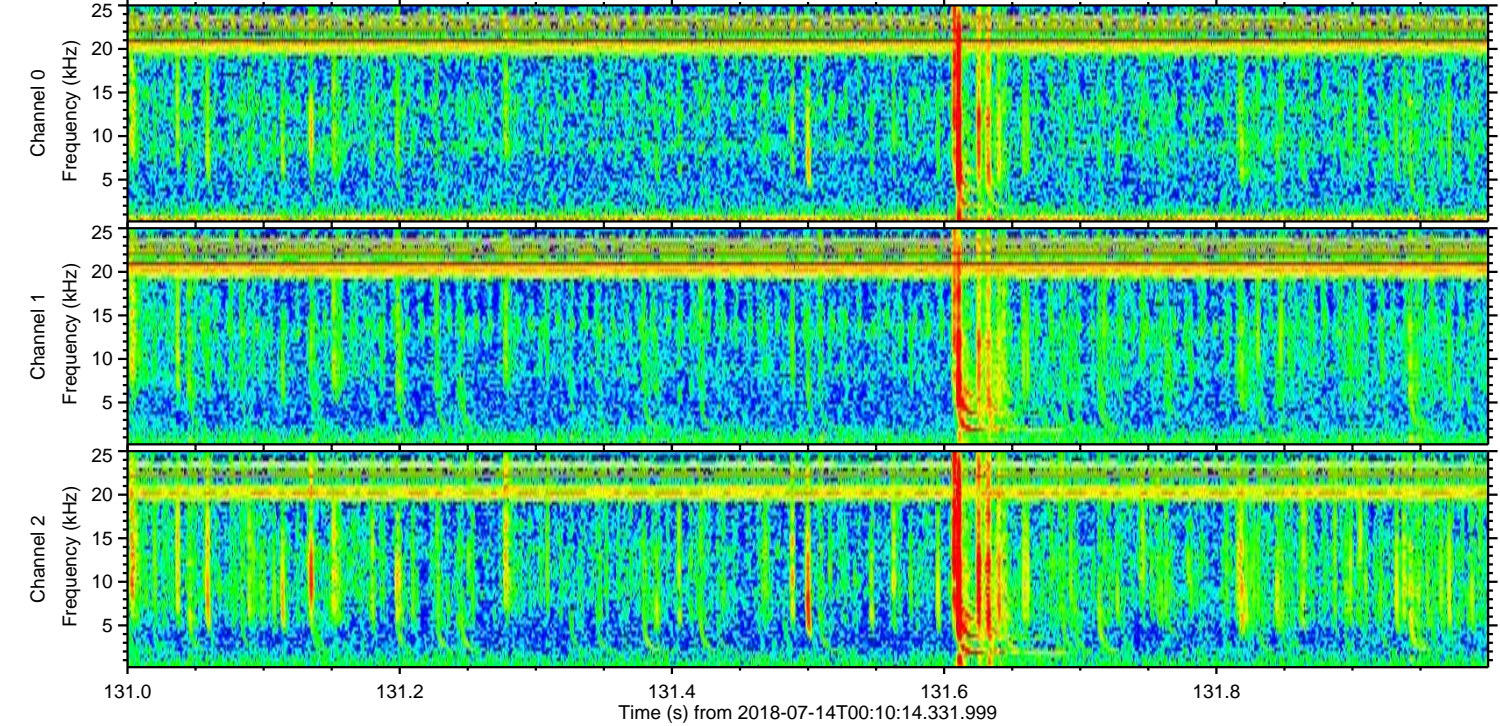
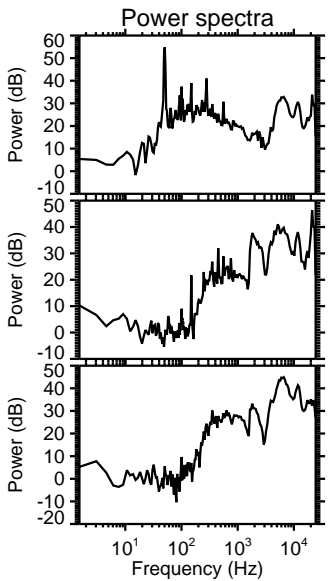
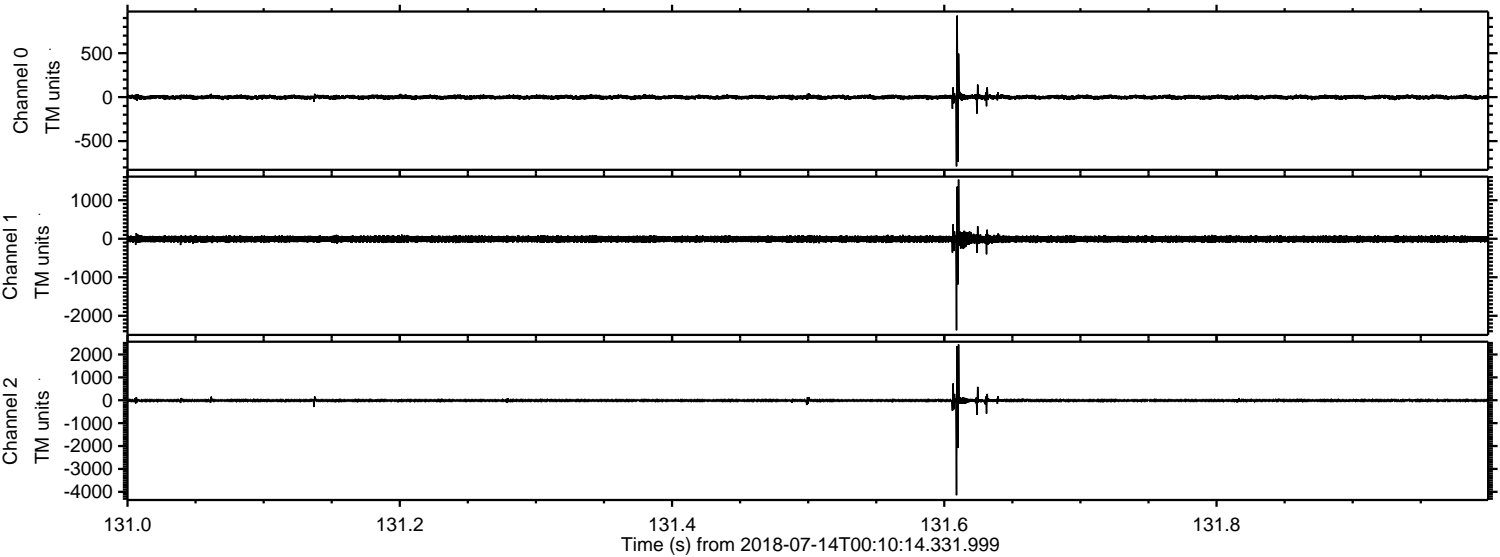
Channel 0
mn: -3805
mx: 2310
 μ : -0.6
 σ : 35.7

Channel 1
mn: -7435
mx: 6988
 μ : -9.9
 σ : 90.2

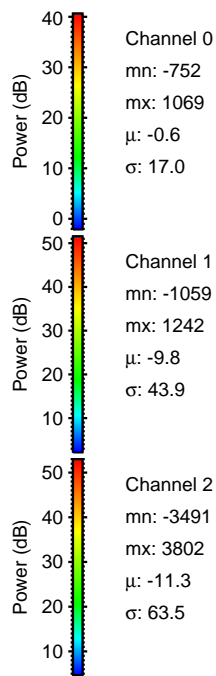
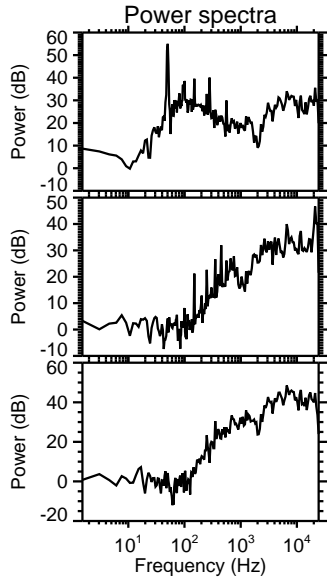
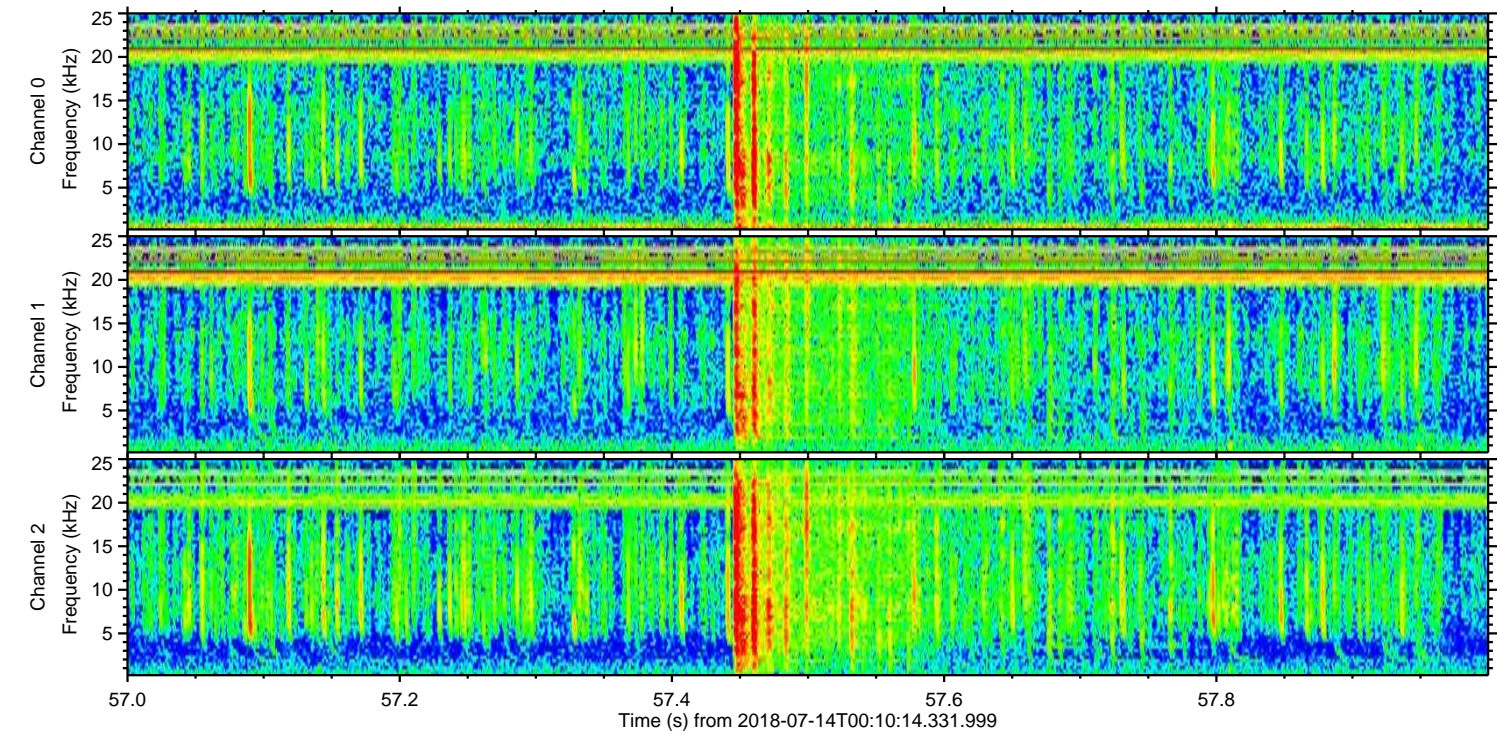
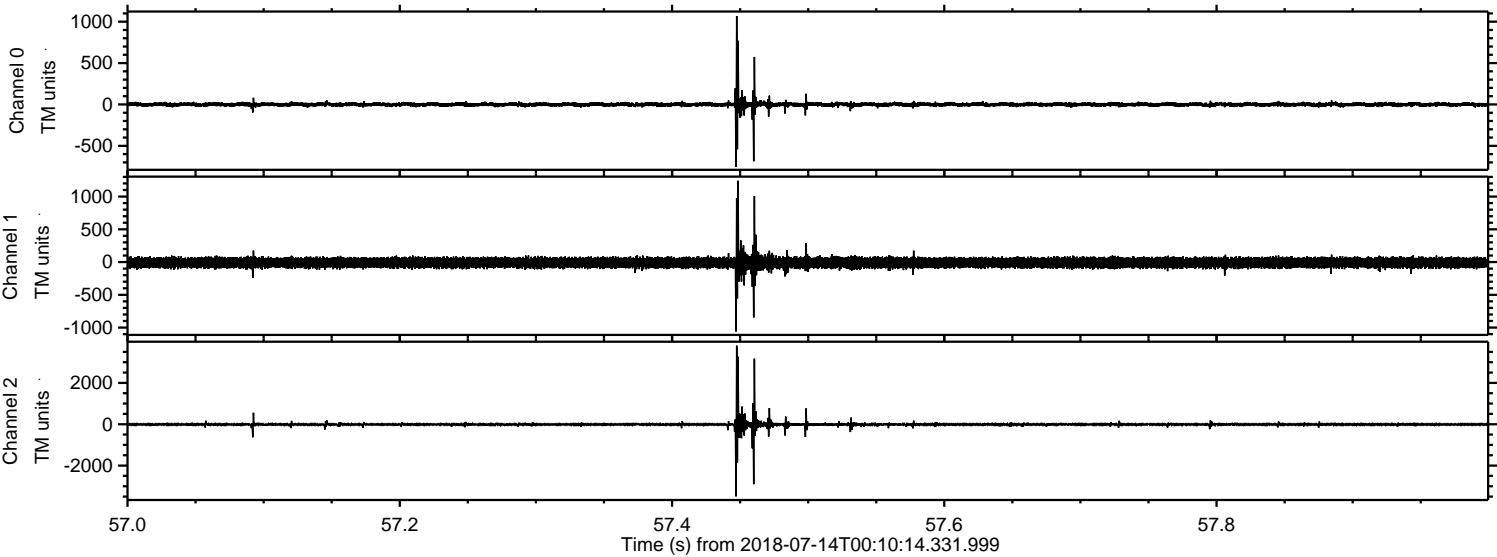
Channel 2
mn: -7163
mx: 6613
 μ : -11.3
 σ : 96.4

ELMAVAN 3D WAVEFORMS (Measured data sampled at 50 kHz) 50997 packets of 144 samples from 2018-07-14T00:10:14.331.999. Part 132/147

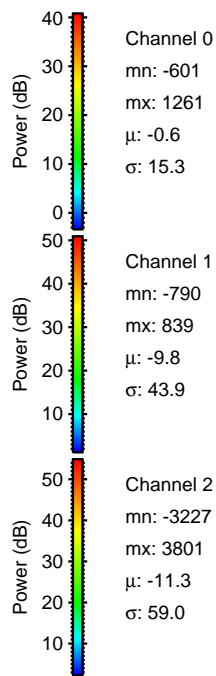
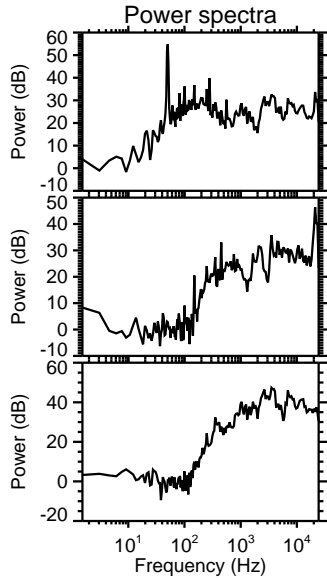
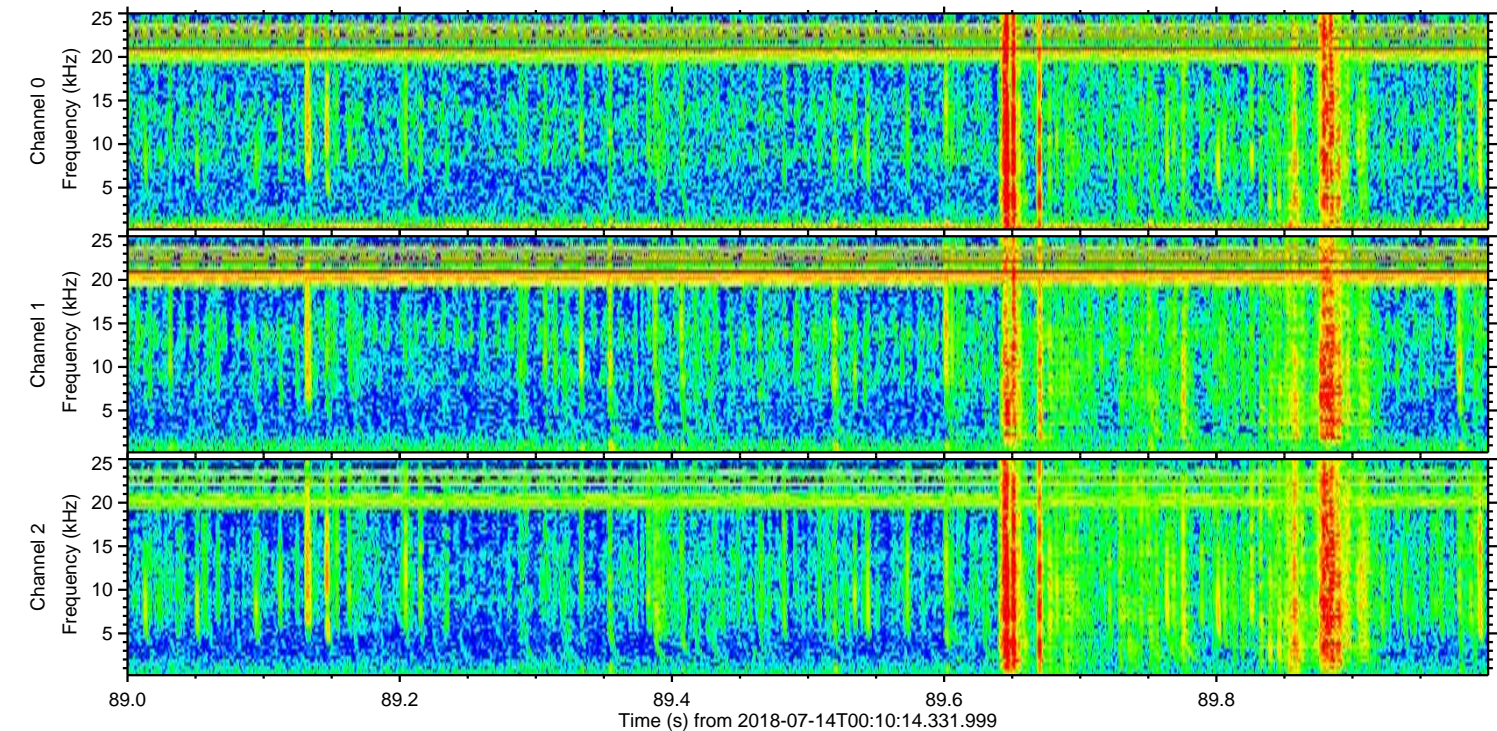
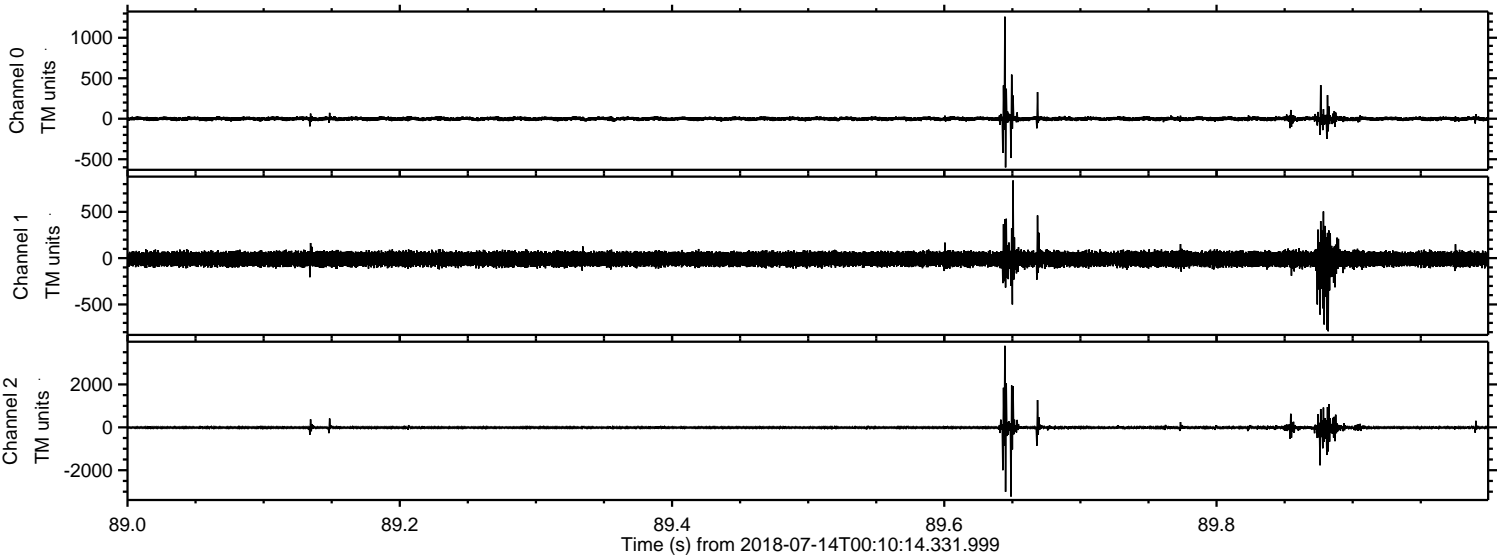
Processed Sat Jul 14 02:17:48 2018 by ELM ver.2012-10-06 from 001__elm20180714_001013__dat00.bin



Processed Sat Jul 14 02:17:49 2018 by ELM ver.2012-10-06 from 001__elm20180714_001013__dat00.bin



Processed Sat Jul 14 02:17:49 2018 by ELM ver.2012-10-06 from 001__elm20180714_001013__dat00.bin



Channel 0
mn: -601
mx: 1261
 μ : -0.6
 σ : 15.3

Channel 1
mn: -790
mx: 839
 μ : -9.8
 σ : 43.9

Channel 2
mn: -3227
mx: 3801
 μ : -11.3
 σ : 59.0

Processed Sat Jul 14 02:17:50 2018 by ELM ver.2012-10-06 from 001__elm20180714_001013__dat00.bin

