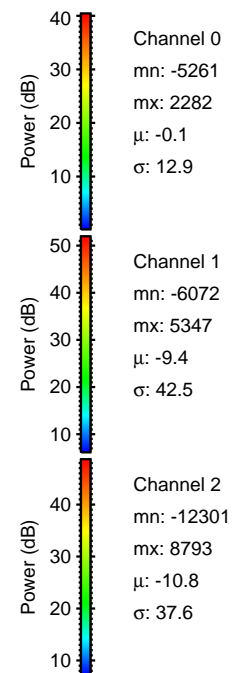
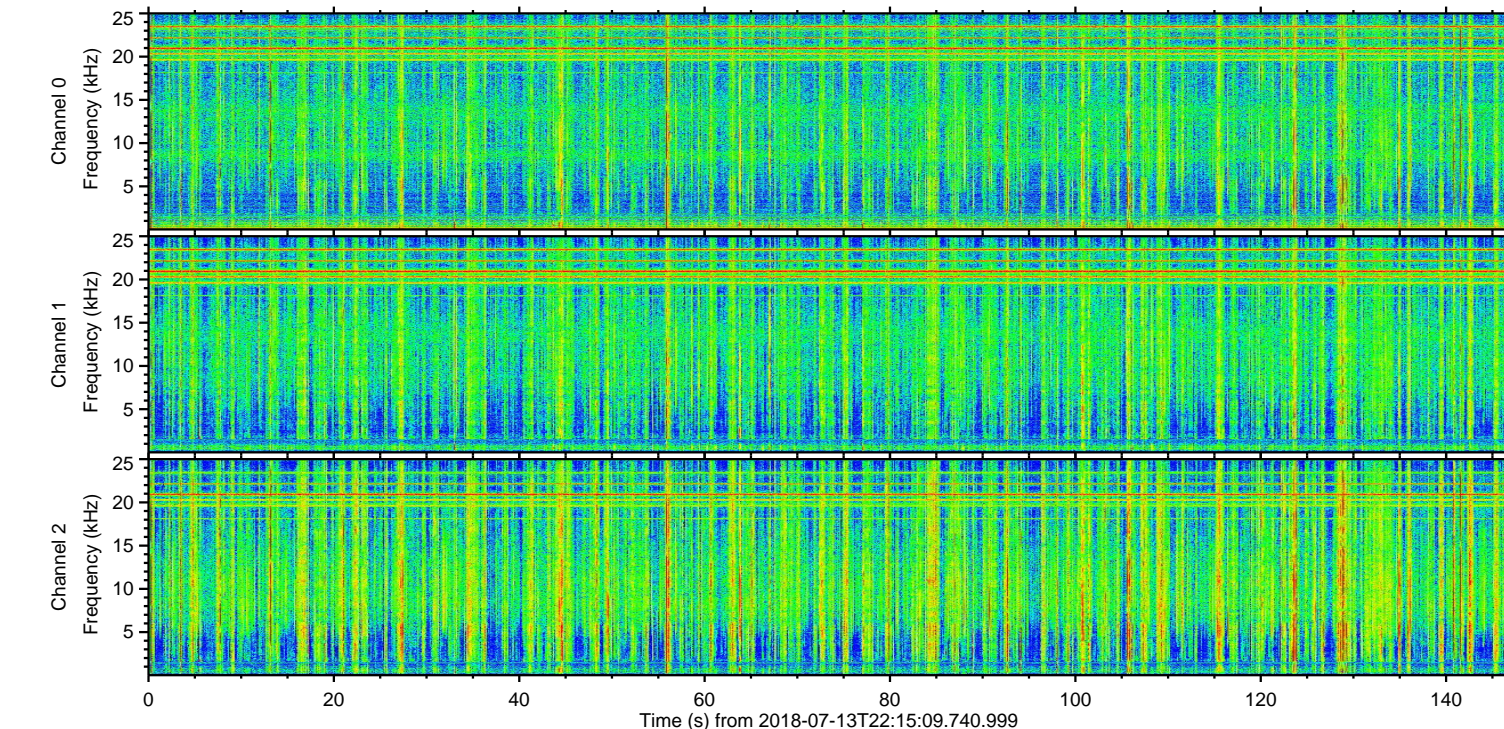
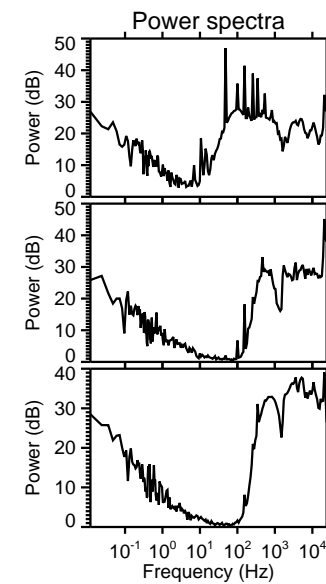
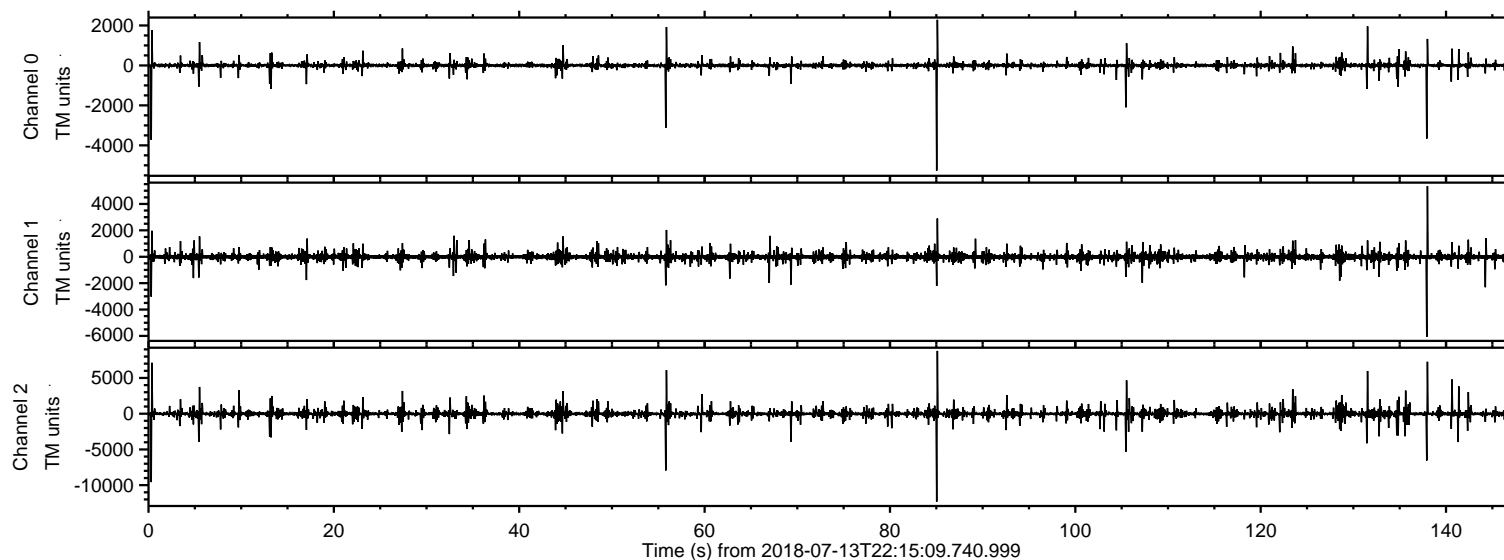


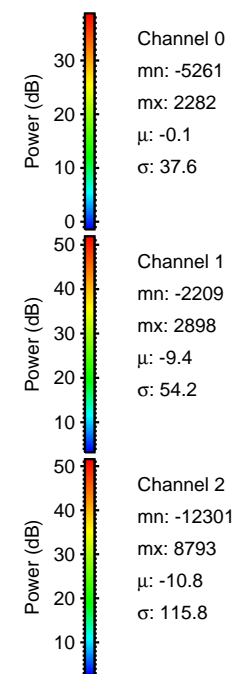
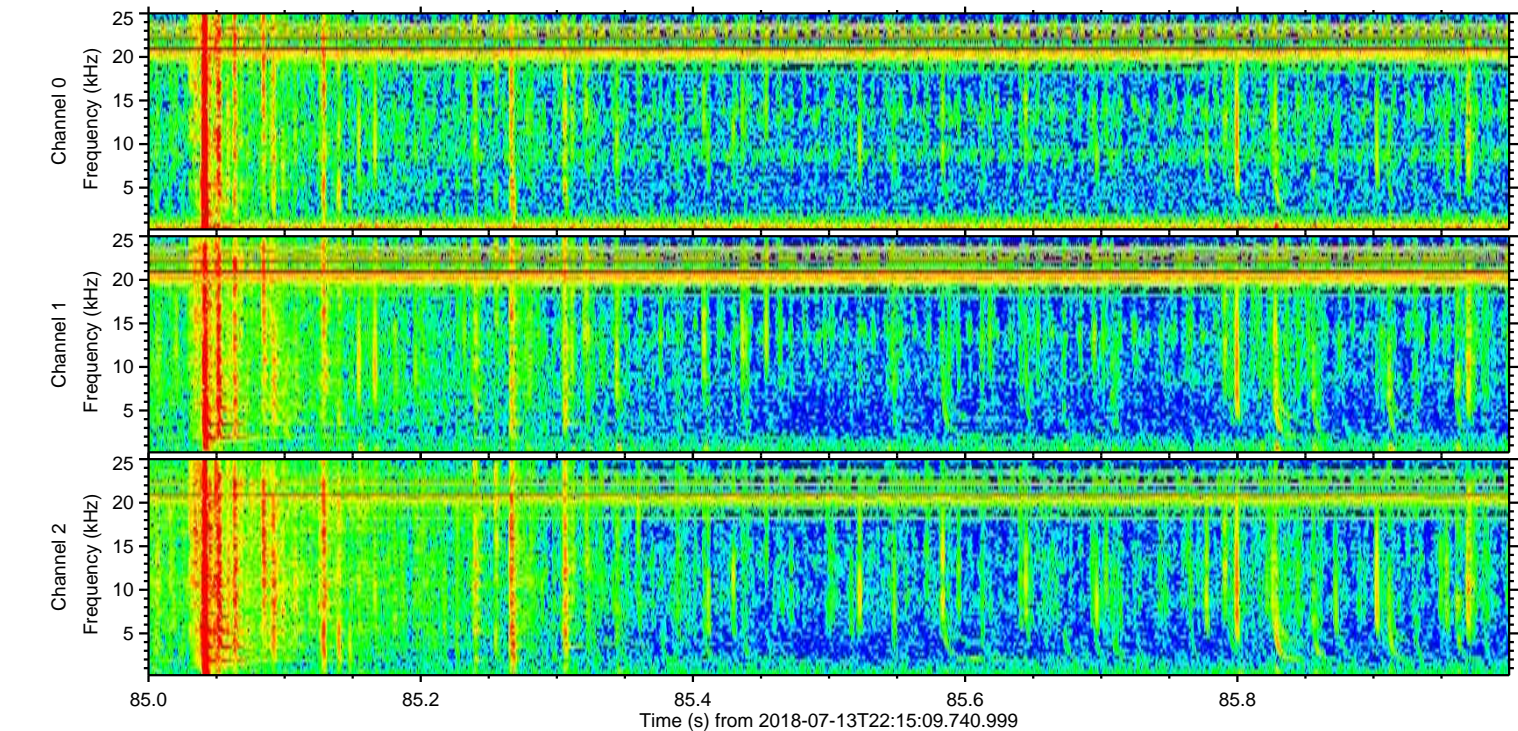
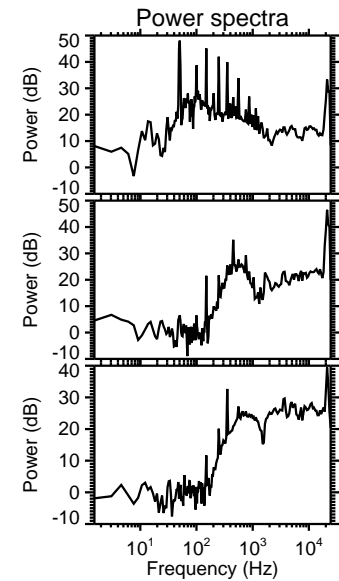
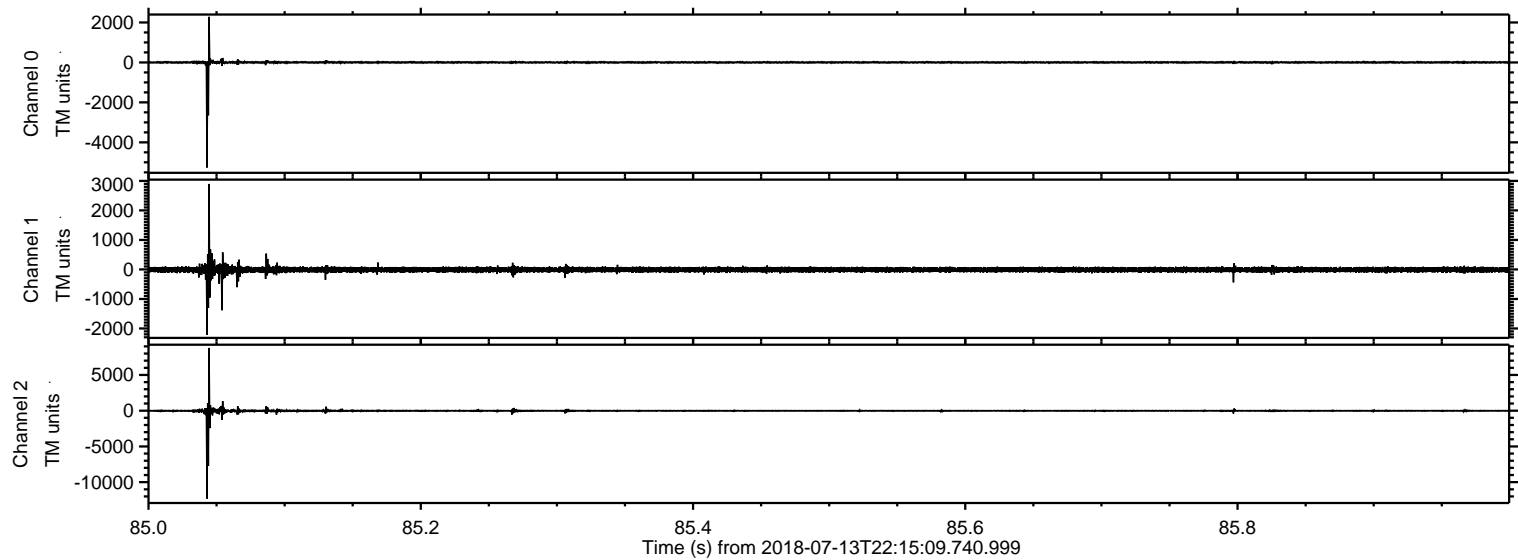
ELMAVAN 3D WAVEFORMS (Measured data sampled at 50 kHz) 51000 packets of 144 samples from 2018-07-13T22:15:09.740.999.

Processed Sat Jul 14 00:22:24 2018 by ELM ver.2012-10-06 from 001__elm20180713_221508__dat00.bin



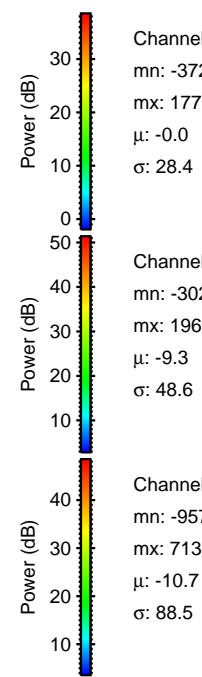
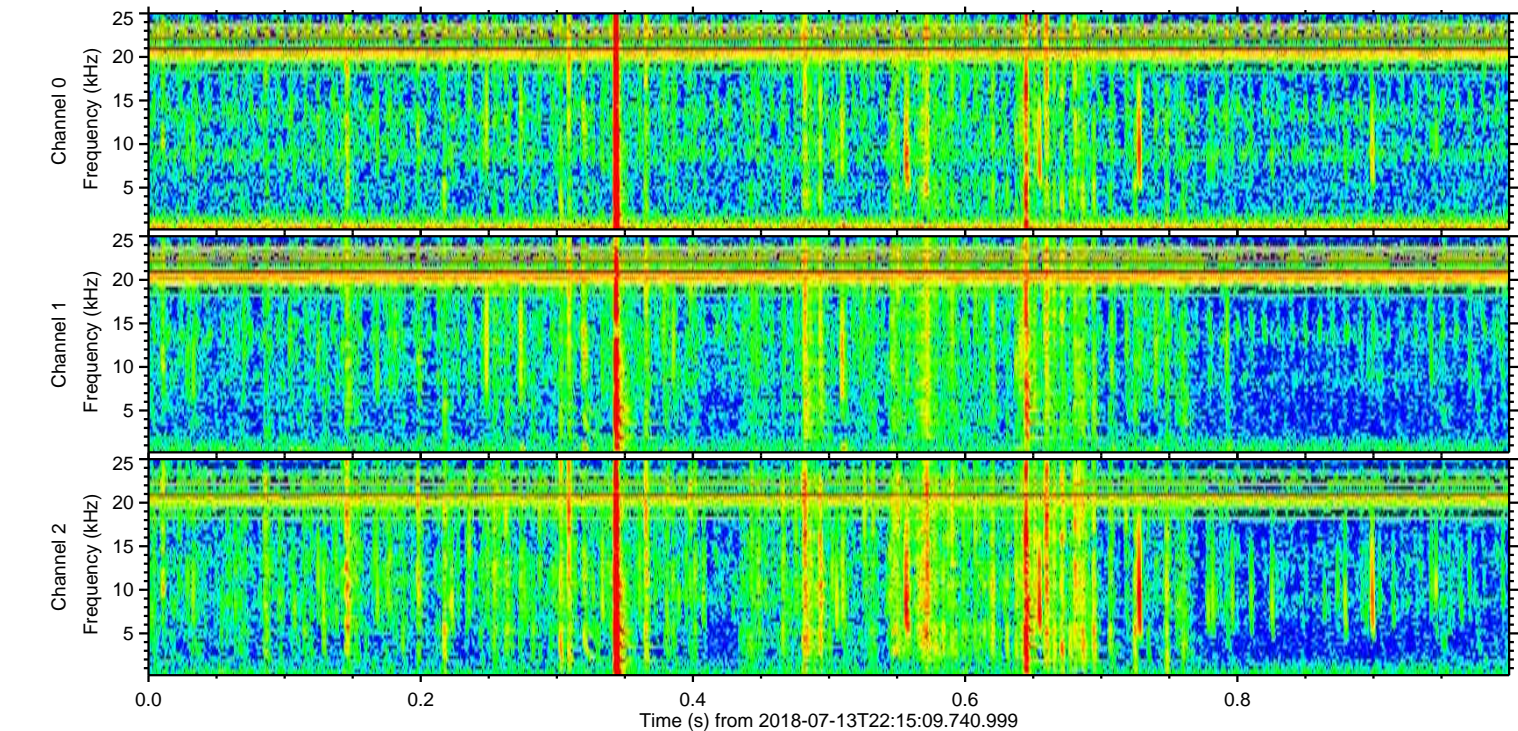
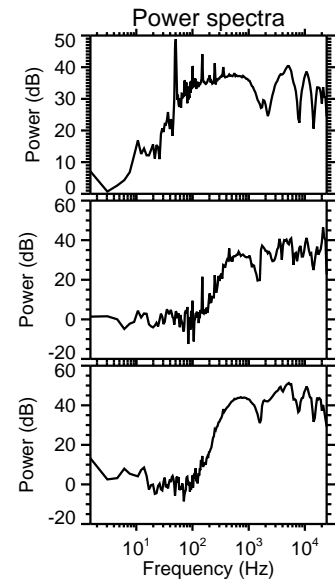
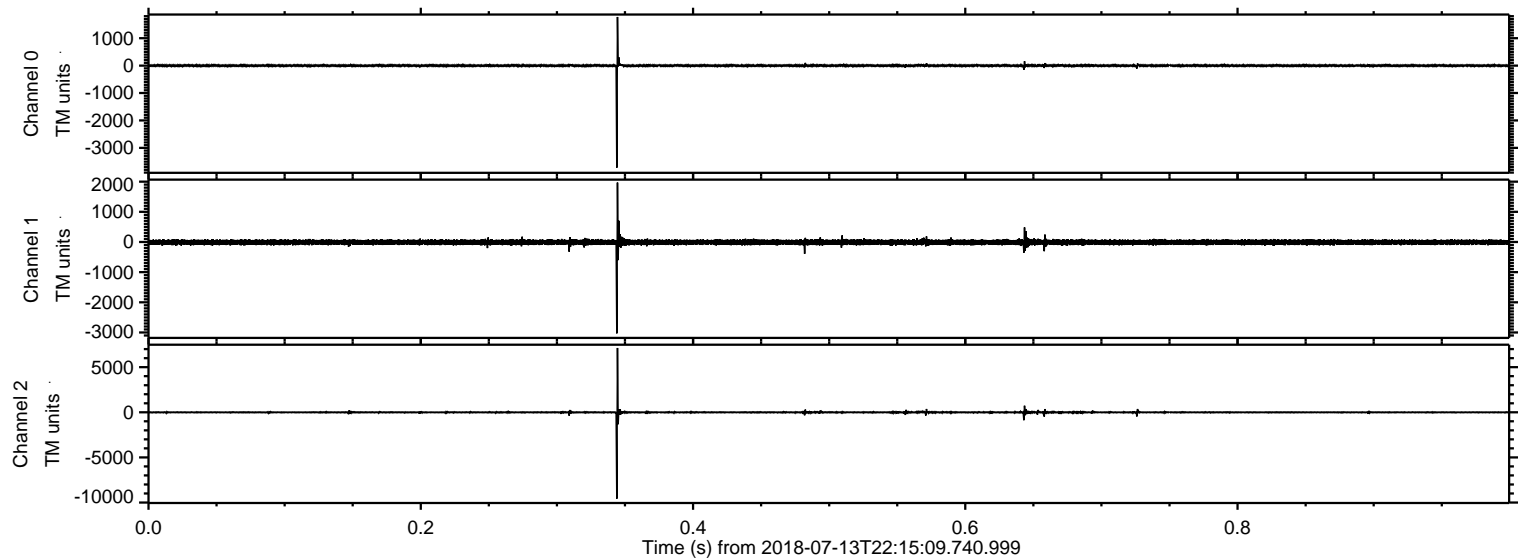
ELMAVAN 3D WAVEFORMS (Measured data sampled at 50 kHz) 51000 packets of 144 samples from 2018-07-13T22:15:09.740.999. Part 86/147

Processed Sat Jul 14 00:22:30 2018 by ELM ver.2012-10-06 from 001__elm20180713_221508__dat00.bin



ELMAVAN 3D WAVEFORMS (Measured data sampled at 50 kHz) 51000 packets of 144 samples from 2018-07-13T22:15:09.740.999. Part 1/147

Processed Sat Jul 14 00:22:30 2018 by ELM ver.2012-10-06 from 001__elm20180713_221508__dat00.bin

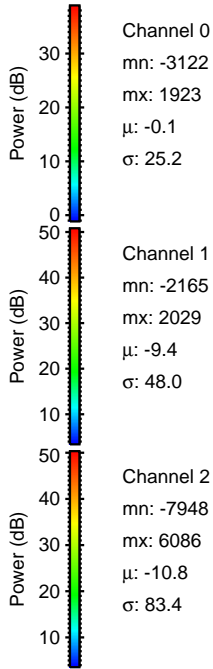
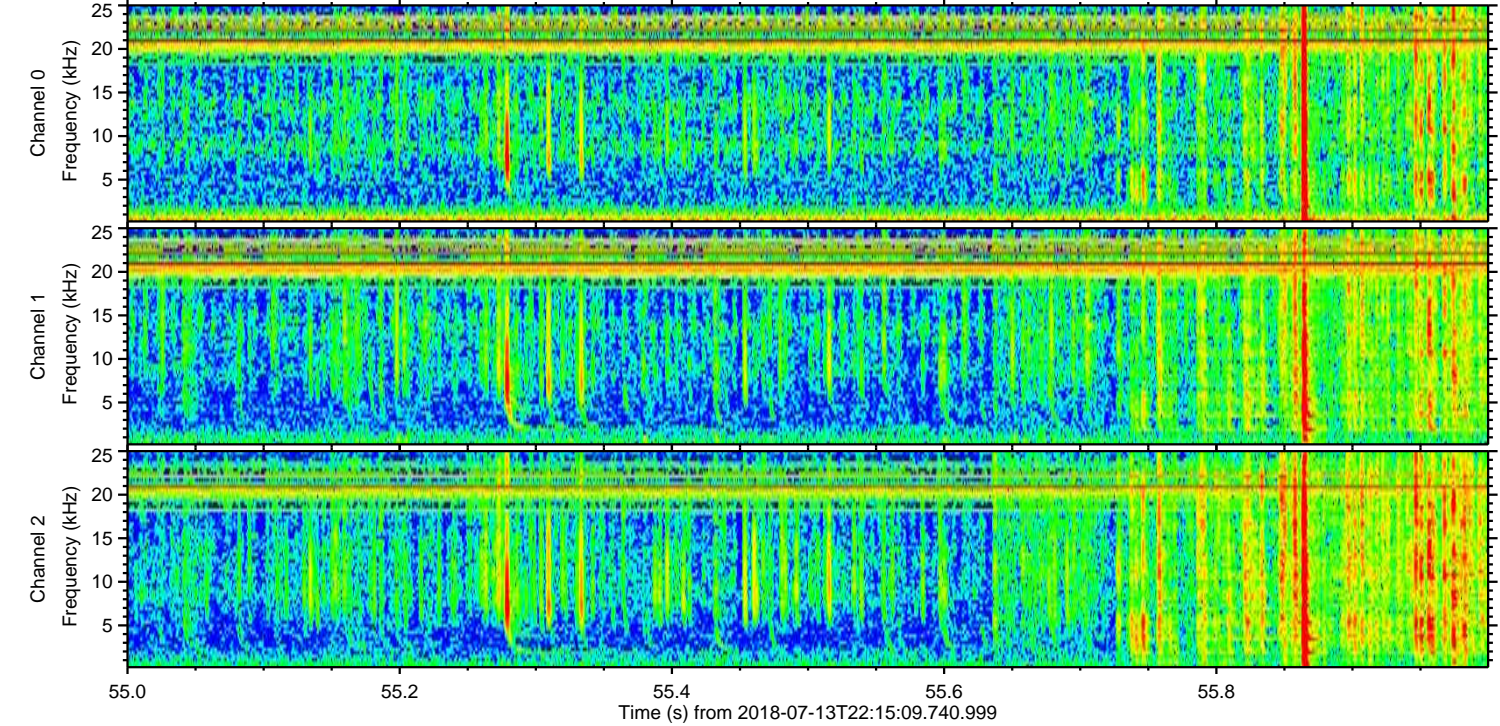
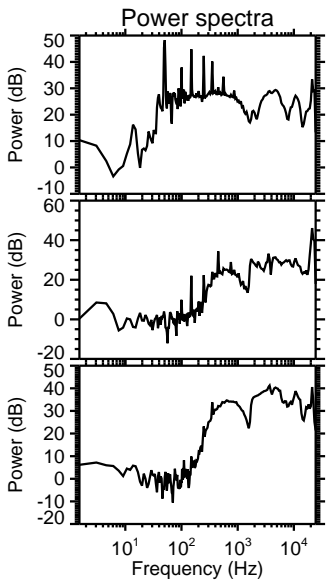
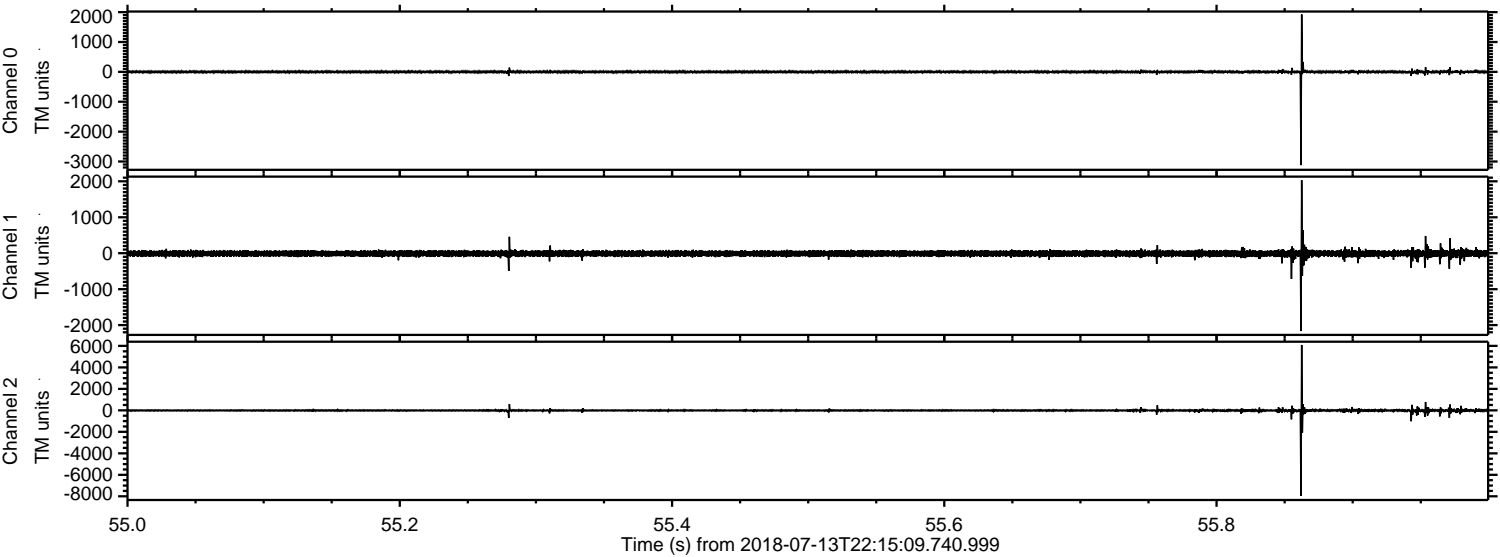


Channel 0
mn: -3723
mx: 1773
 μ : -0.0
 σ : 28.4

Channel 1
mn: -3028
mx: 1968
 μ : -9.3
 σ : 48.6

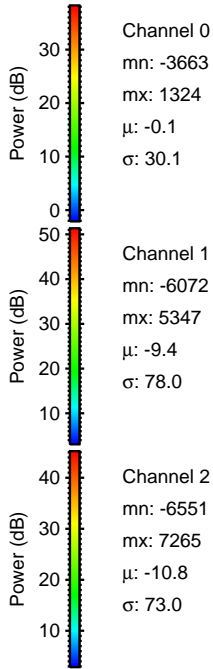
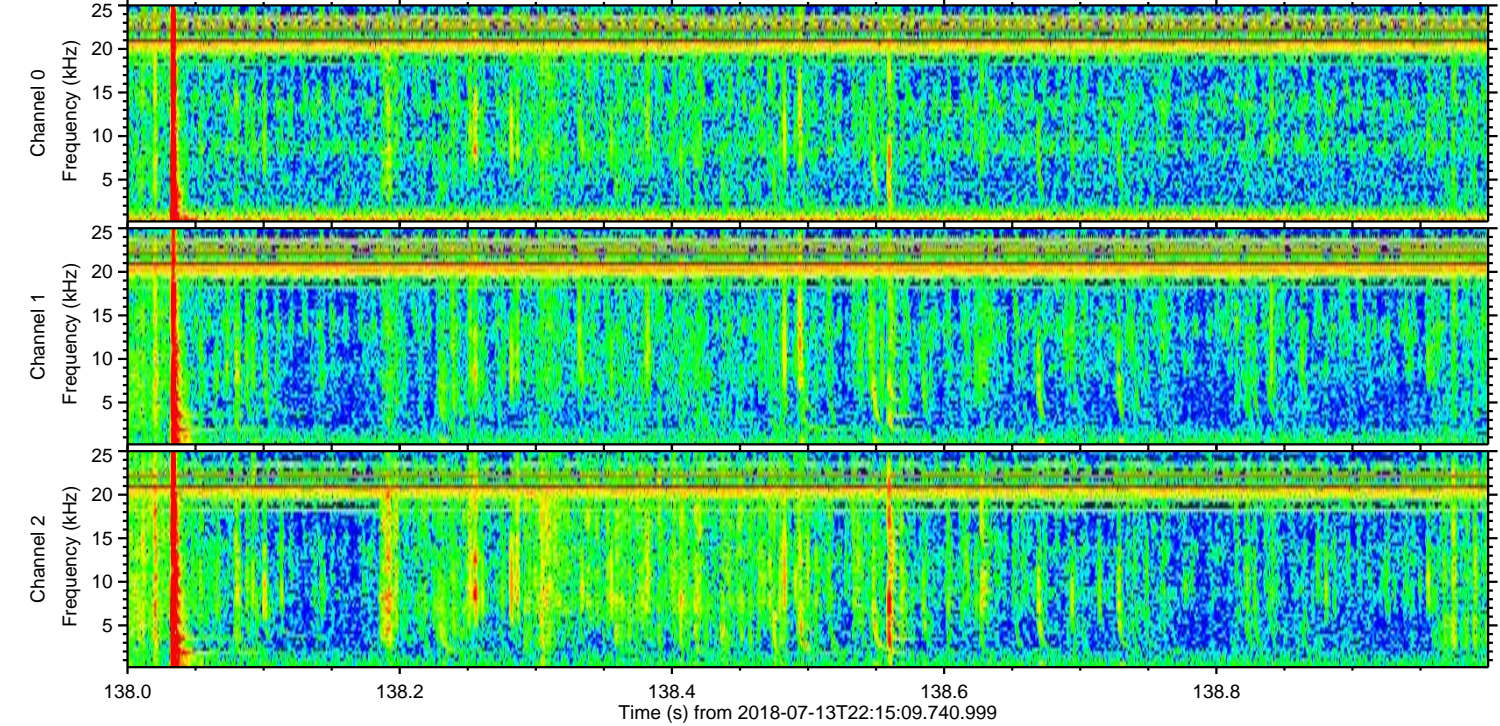
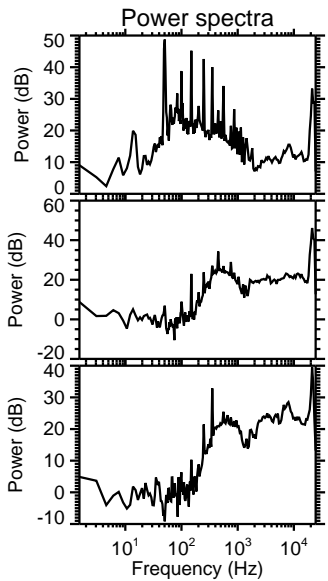
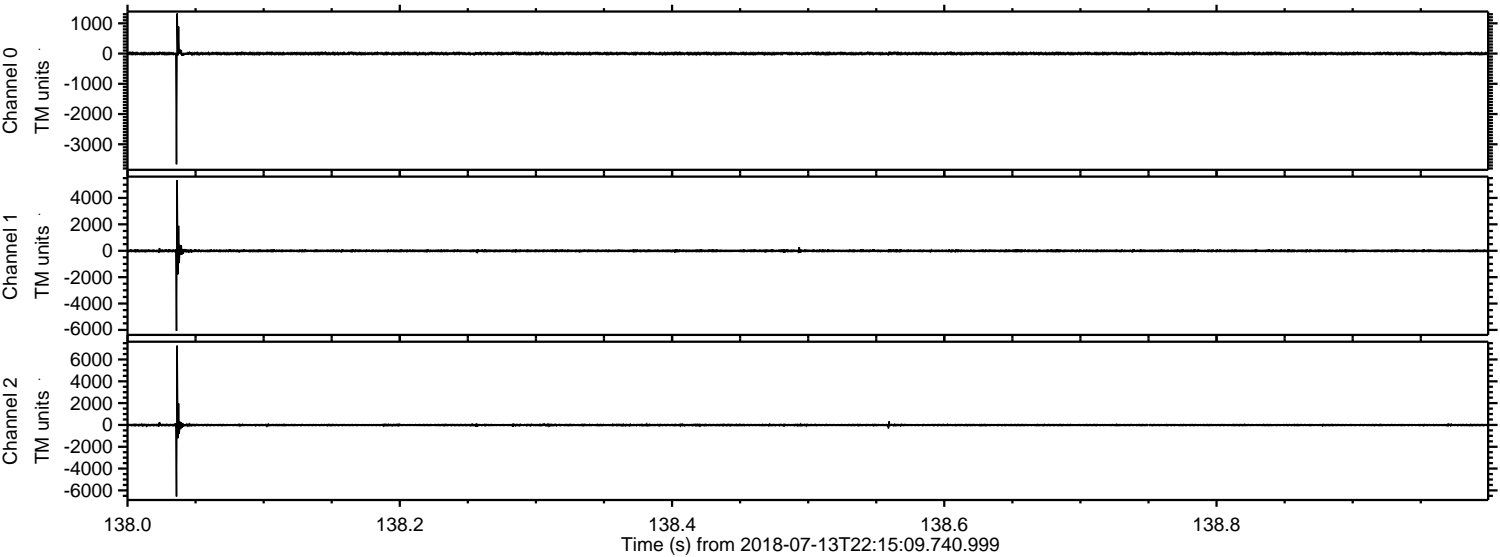
Channel 2
mn: -9575
mx: 7132
 μ : -10.7
 σ : 88.5

Processed Sat Jul 14 00:22:31 2018 by ELM ver.2012-10-06 from 001__elm20180713_221508__dat00.bin



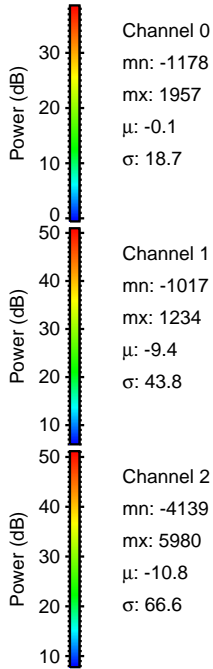
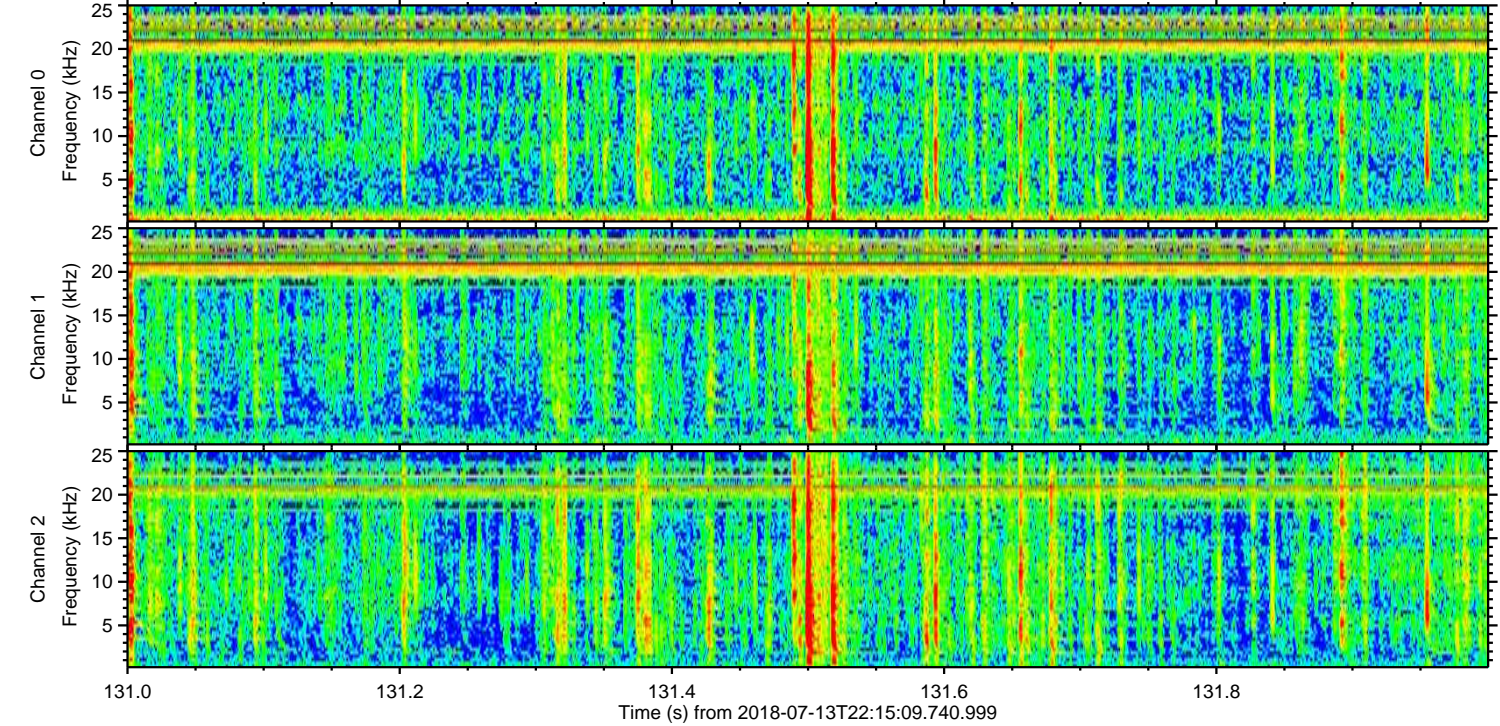
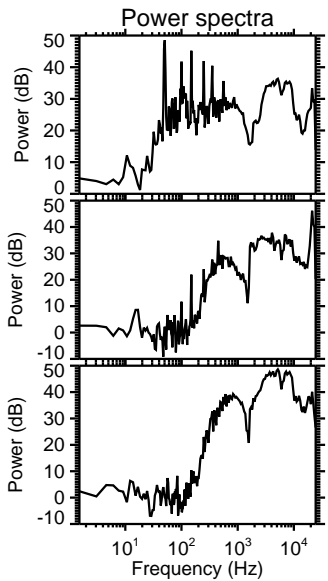
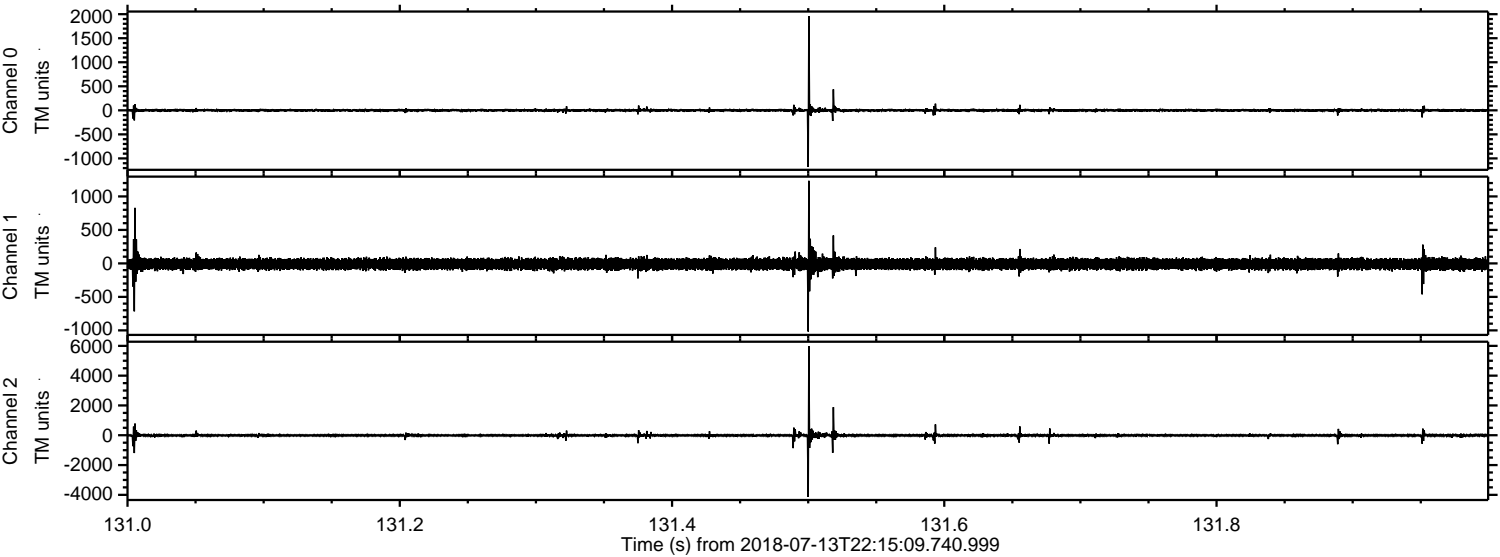
ELMAVAN 3D WAVEFORMS (Measured data sampled at 50 kHz) 51000 packets of 144 samples from 2018-07-13T22:15:09.740.999. Part 139/147

Processed Sat Jul 14 00:22:32 2018 by ELM ver.2012-10-06 from 001__elm20180713_221508__dat00.bin



ELMAVAN 3D WAVEFORMS (Measured data sampled at 50 kHz) 51000 packets of 144 samples from 2018-07-13T22:15:09.740.999. Part 132/147

Processed Sat Jul 14 00:22:32 2018 by ELM ver.2012-10-06 from 001__elm20180713_221508__dat00.bin



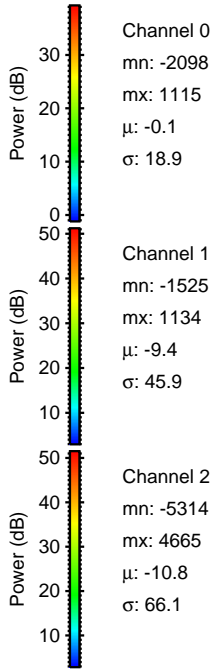
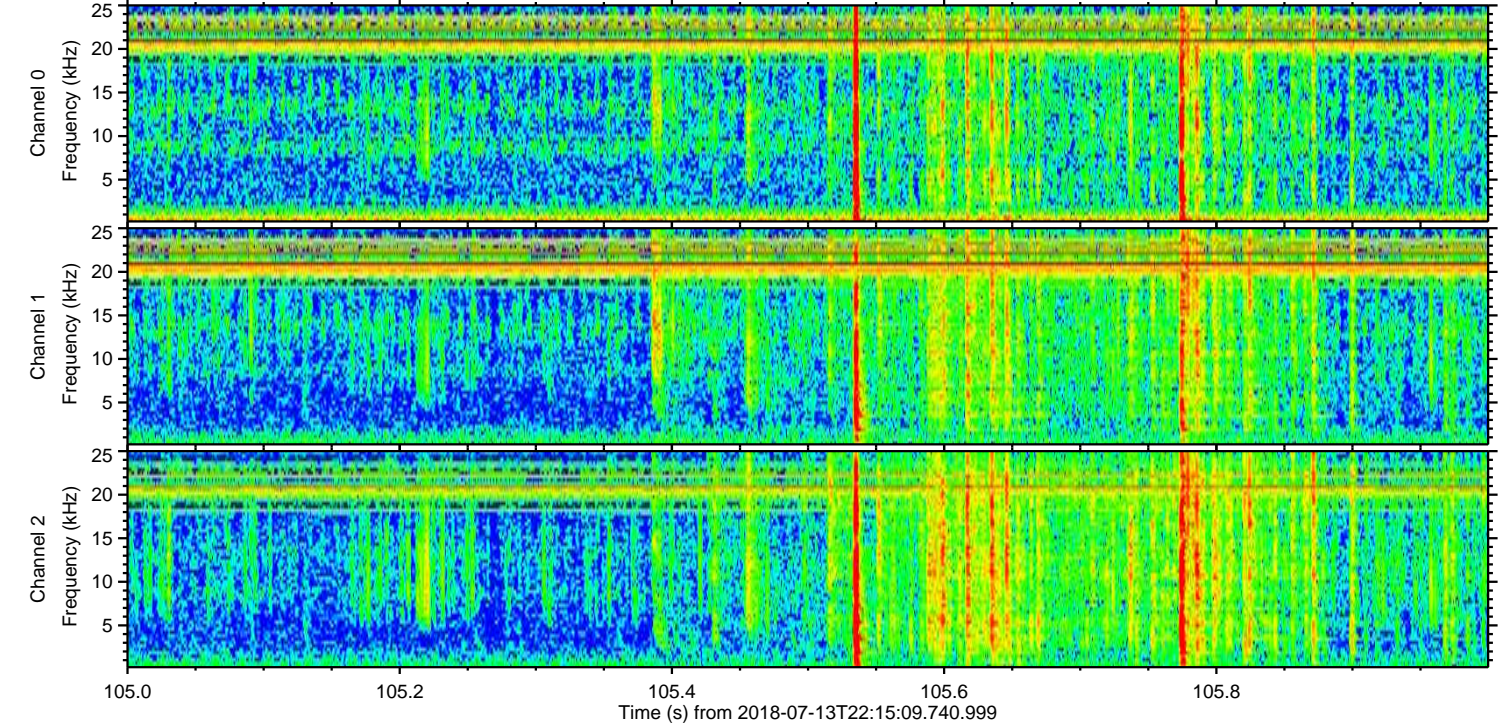
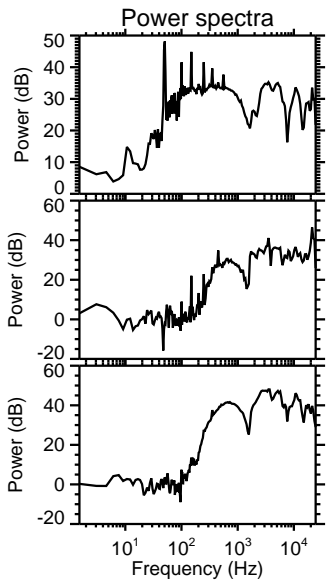
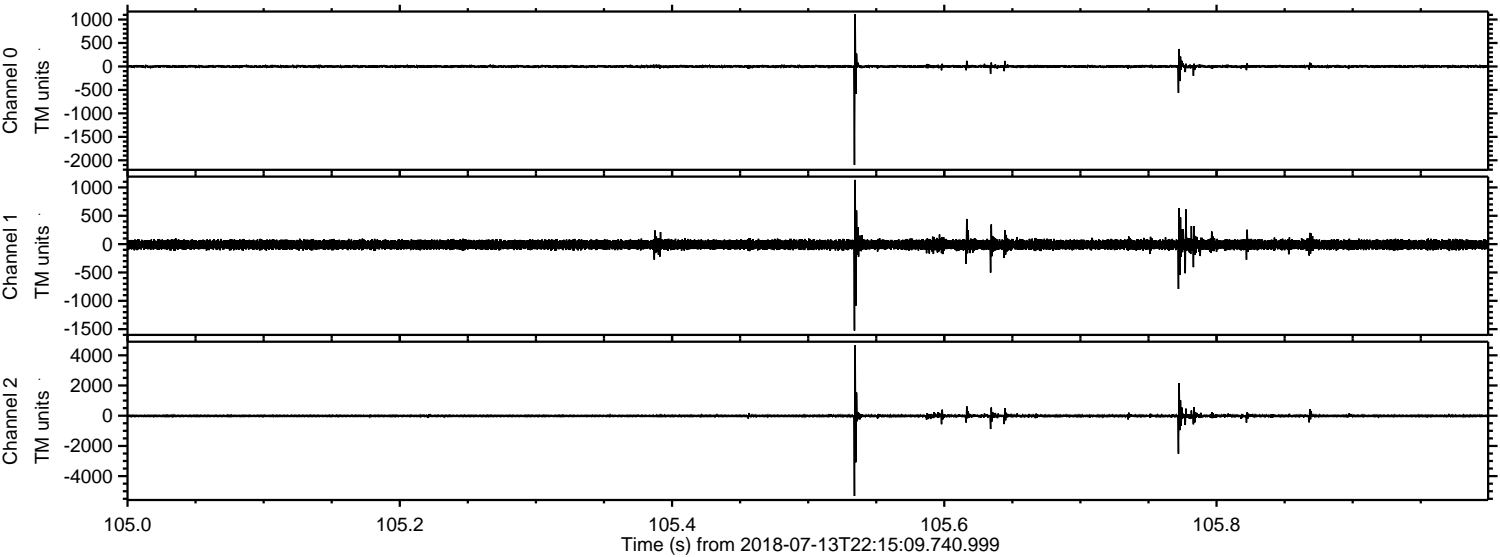
Channel 0
mn: -1178
mx: 1957
 μ : -0.1
 σ : 18.7

Channel 1
mn: -1017
mx: 1234
 μ : -9.4
 σ : 43.8

Channel 2
mn: -4139
mx: 5980
 μ : -10.8
 σ : 66.6

ELMAVAN 3D WAVEFORMS (Measured data sampled at 50 kHz) 51000 packets of 144 samples from 2018-07-13T22:15:09.740.999. Part 106/147

Processed Sat Jul 14 00:22:33 2018 by ELM ver.2012-10-06 from 001__elm20180713_221508__dat00.bin



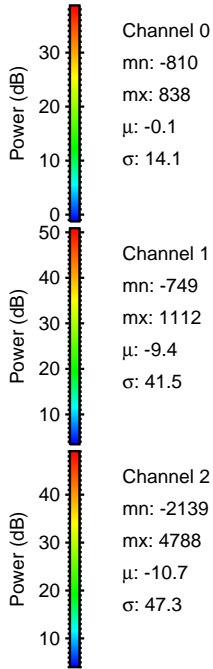
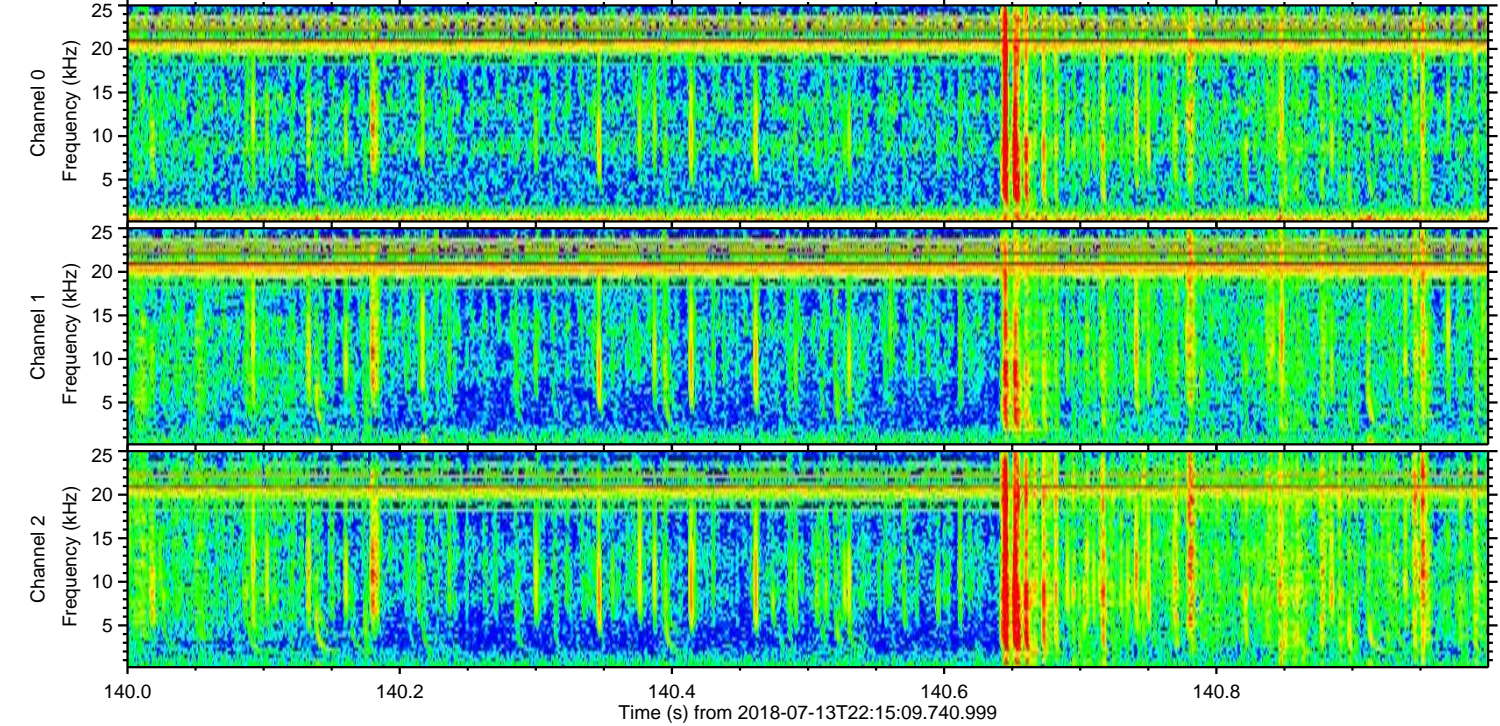
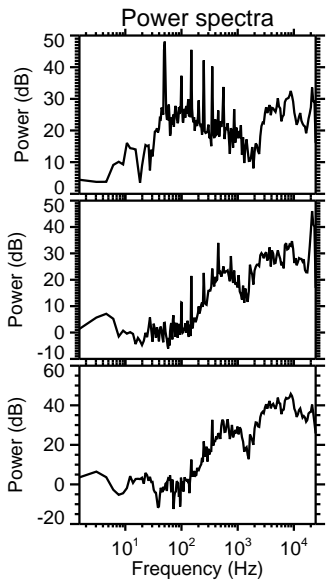
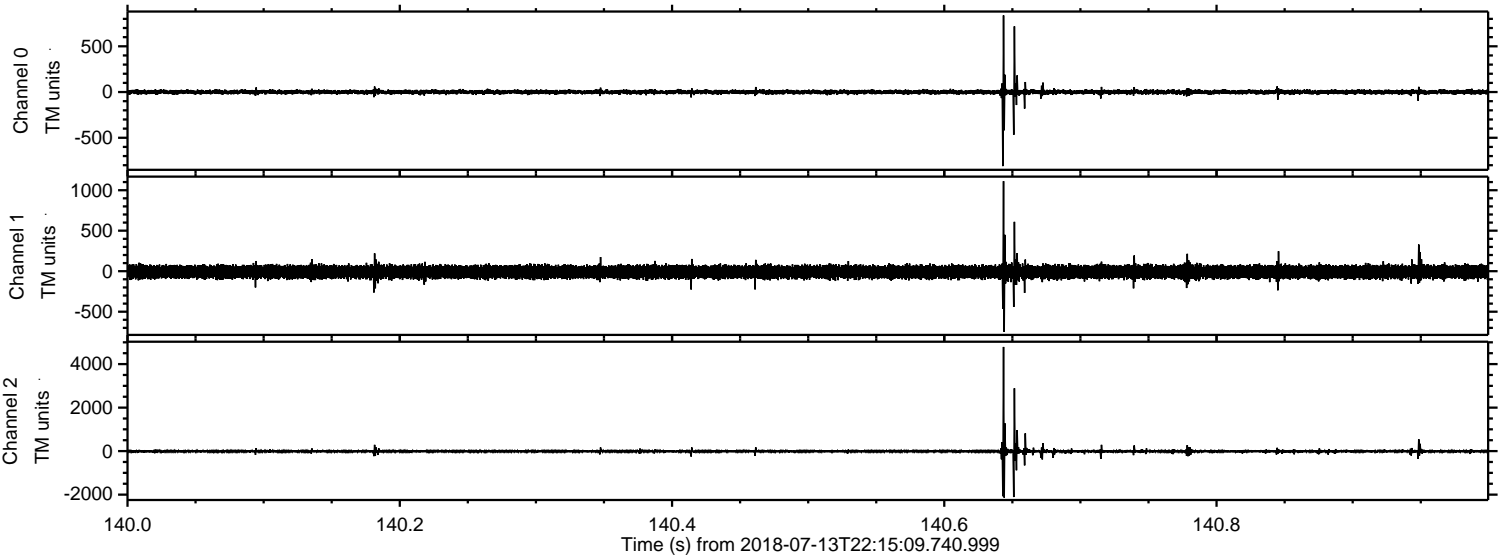
Channel 0
mn: -2098
mx: 1115
 μ : -0.1
 σ : 18.9

Channel 1
mn: -1525
mx: 1134
 μ : -9.4
 σ : 45.9

Channel 2
mn: -5314
mx: 4665
 μ : -10.8
 σ : 66.1

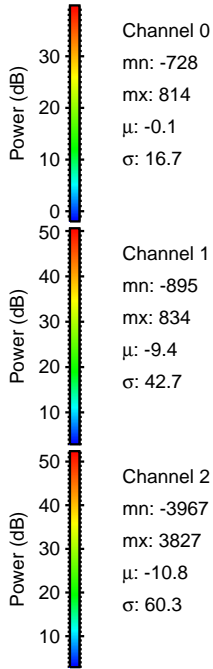
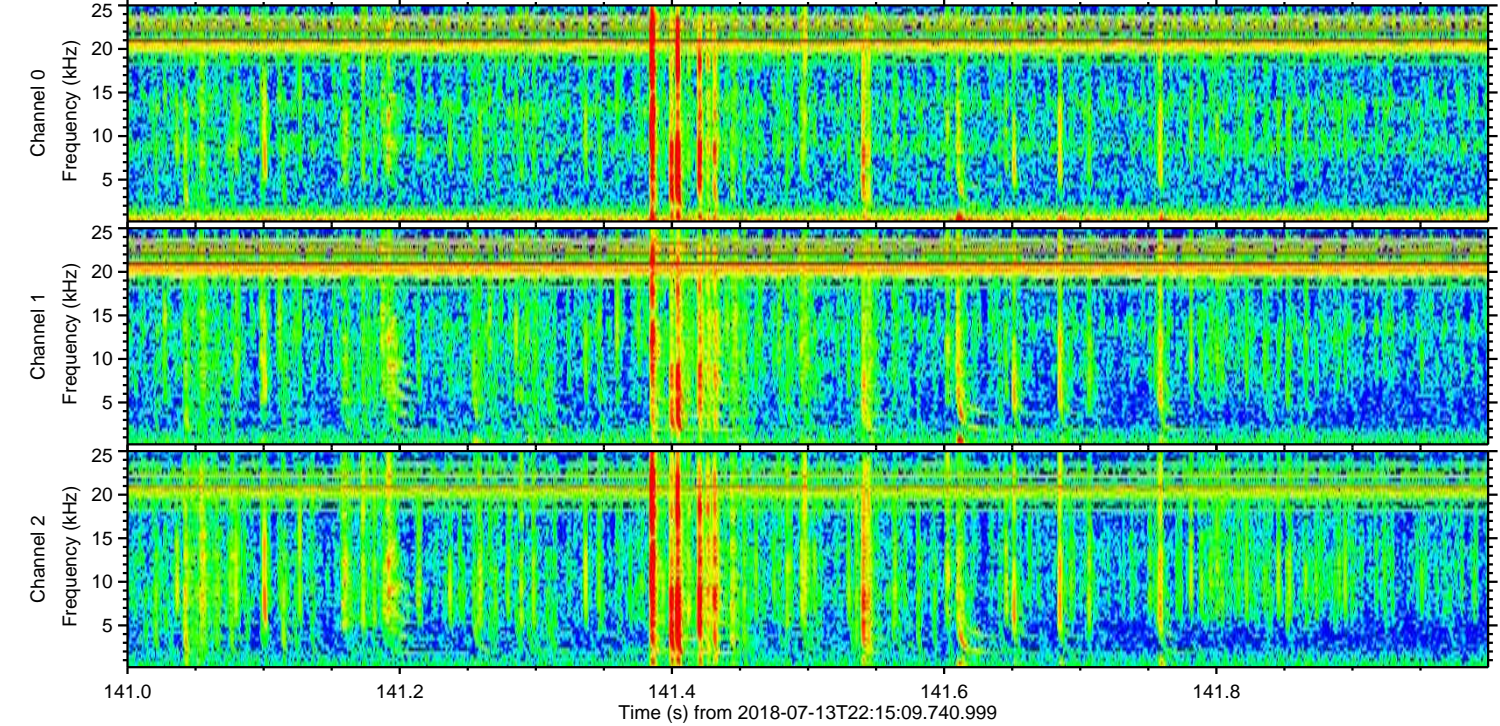
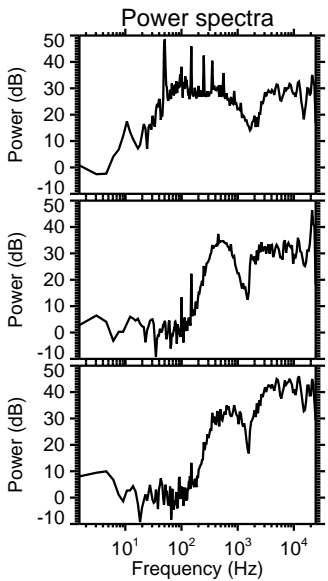
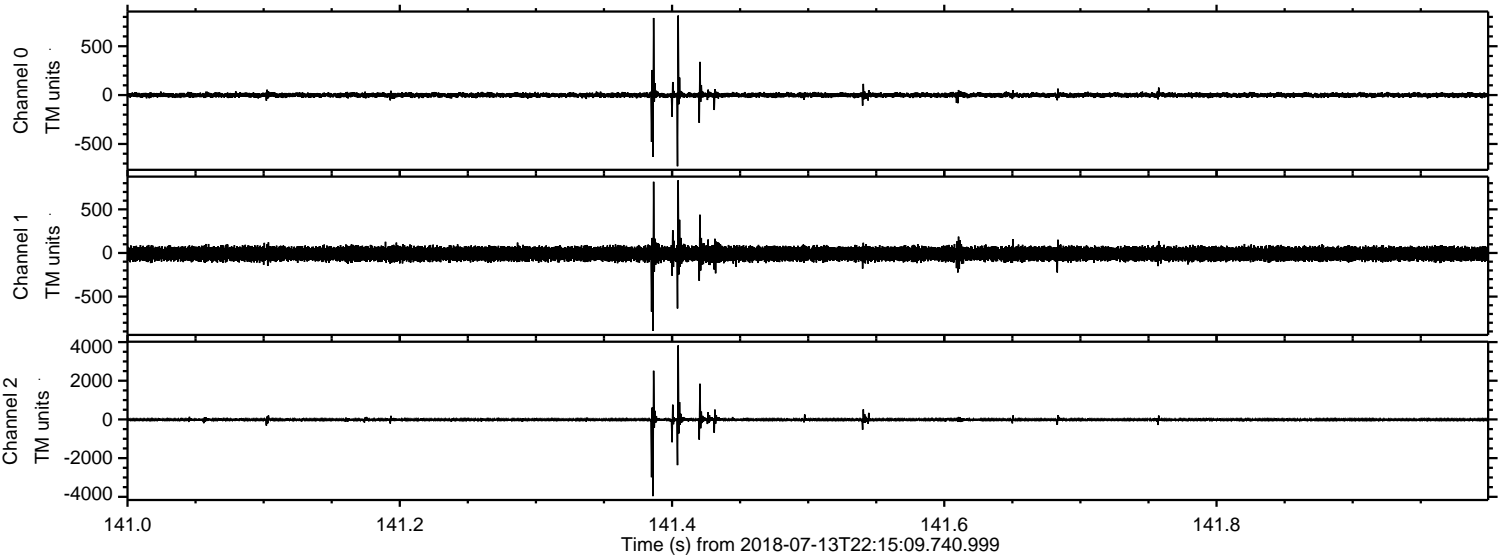
ELMAVAN 3D WAVEFORMS (Measured data sampled at 50 kHz) 51000 packets of 144 samples from 2018-07-13T22:15:09.740.999. Part 141/147

Processed Sat Jul 14 00:22:34 2018 by ELM ver.2012-10-06 from 001__elm20180713_221508__dat00.bin



ELMAVAN 3D WAVEFORMS (Measured data sampled at 50 kHz) 51000 packets of 144 samples from 2018-07-13T22:15:09.740.999. Part 142/147

Processed Sat Jul 14 00:22:34 2018 by ELM ver.2012-10-06 from 001__elm20180713_221508__dat00.bin

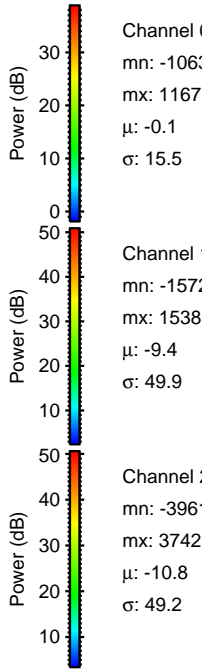
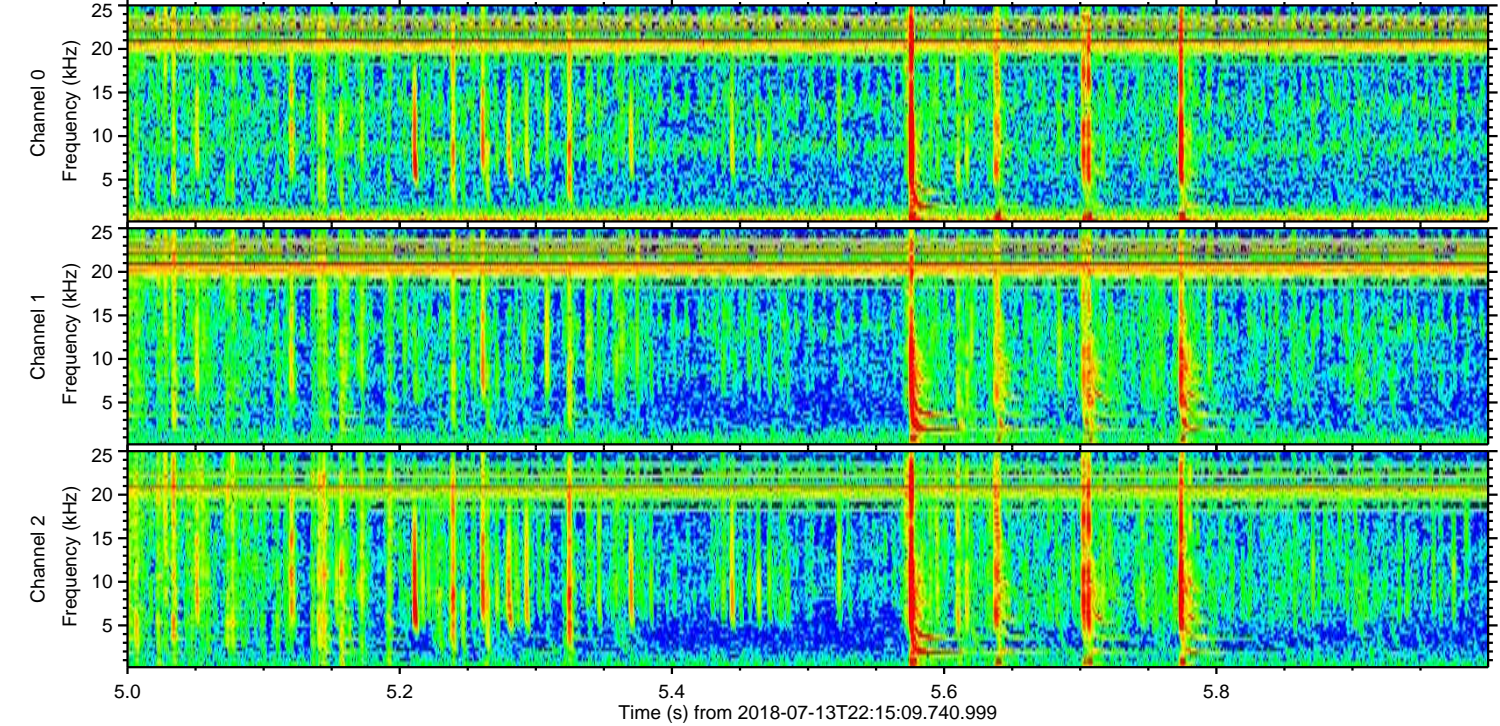
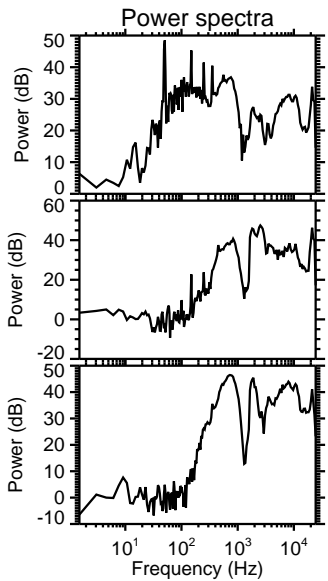
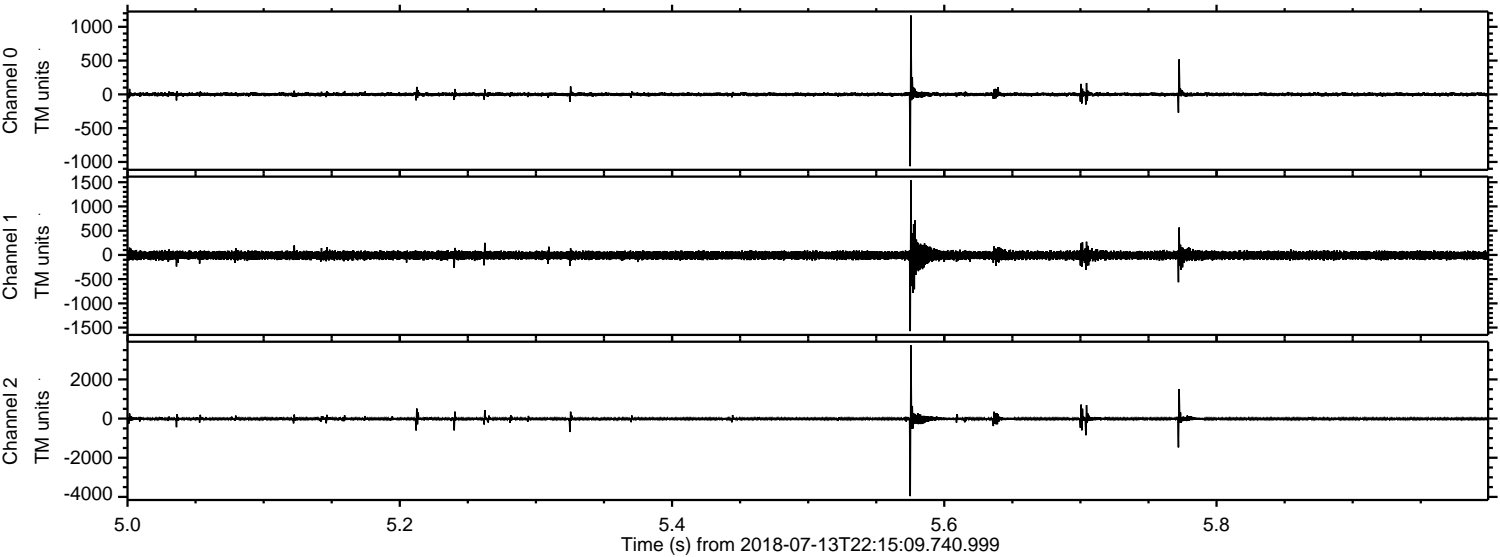


Channel 0
mn: -728
mx: 814
 μ : -0.1
 σ : 16.7

Channel 1
mn: -895
mx: 834
 μ : -9.4
 σ : 42.7

Channel 2
mn: -3967
mx: 3827
 μ : -10.8
 σ : 60.3

Processed Sat Jul 14 00:22:35 2018 by ELM ver.2012-10-06 from 001__elm20180713_221508__dat00.bin



Channel 0
mn: -1063
mx: 1167
 μ : -0.1
 σ : 15.5

Channel 1
mn: -1572
mx: 1538
 μ : -9.4
 σ : 49.9

Channel 2
mn: -3961
mx: 3742
 μ : -10.8
 σ : 49.2

ELMAVAN 3D WAVEFORMS (Measured data sampled at 50 kHz) 51000 packets of 144 samples from 2018-07-13T22:15:09.740.999. Part 77/147

Processed Sat Jul 14 00:22:35 2018 by ELM ver.2012-10-06 from 001__elm20180713_221508__dat00.bin

