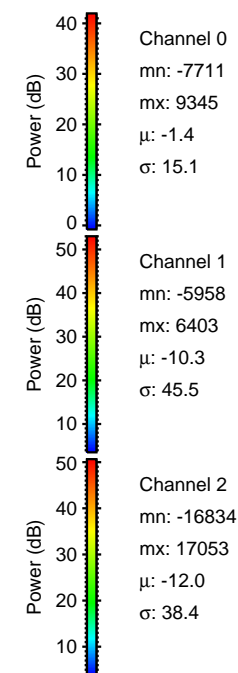
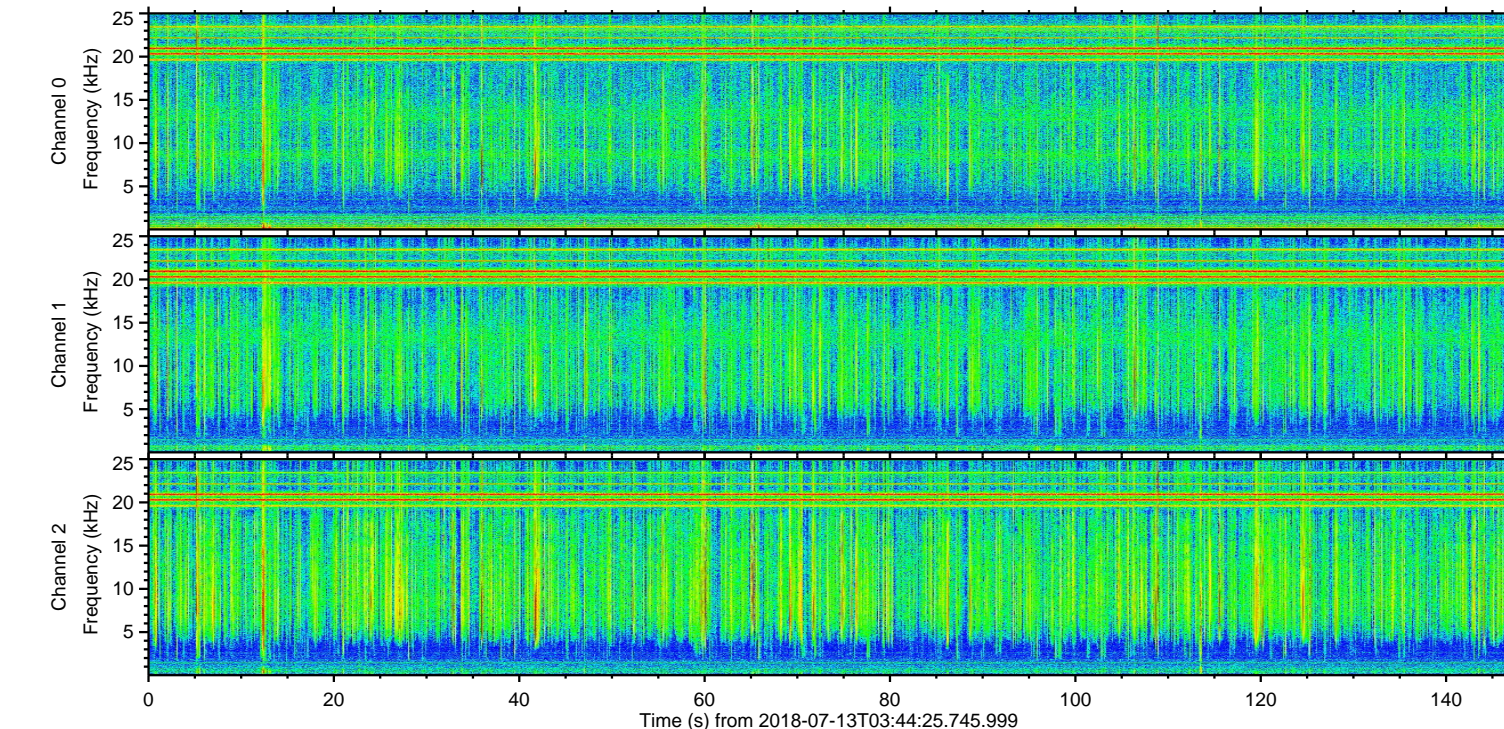
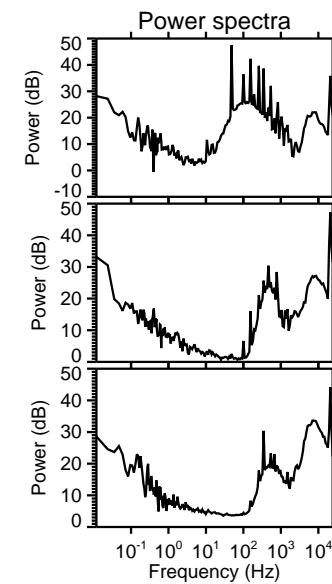
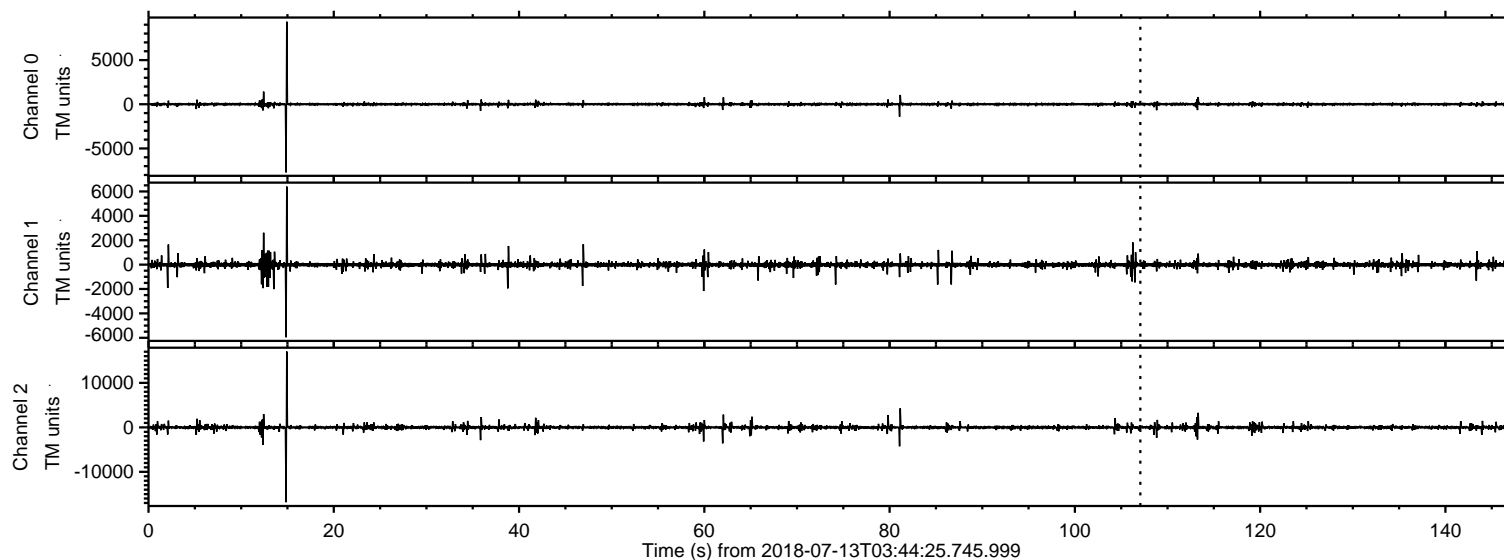
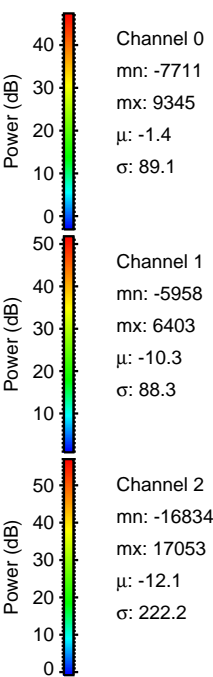
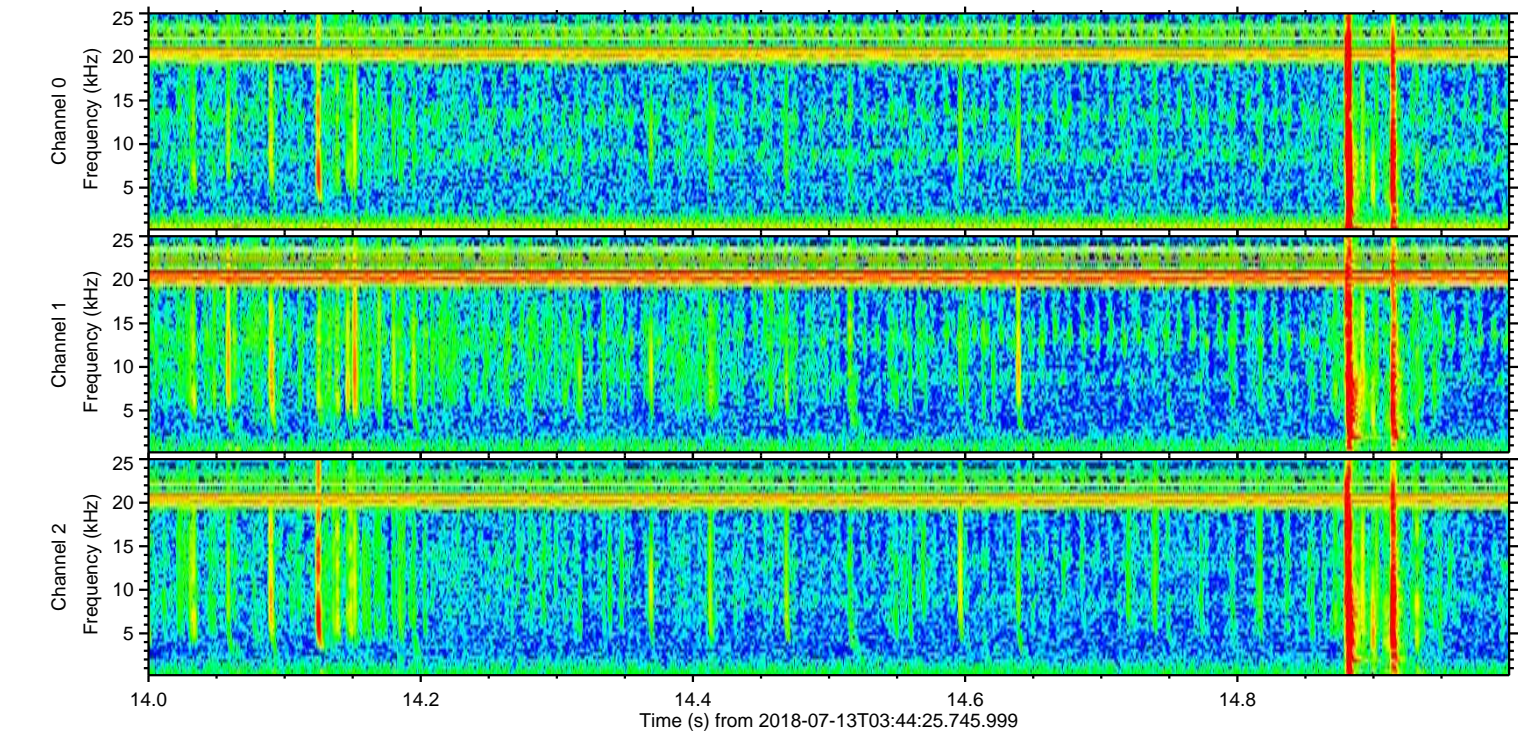
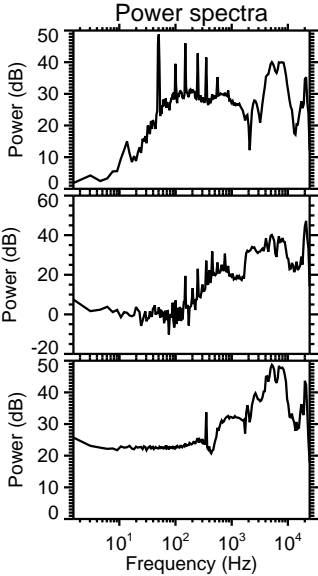
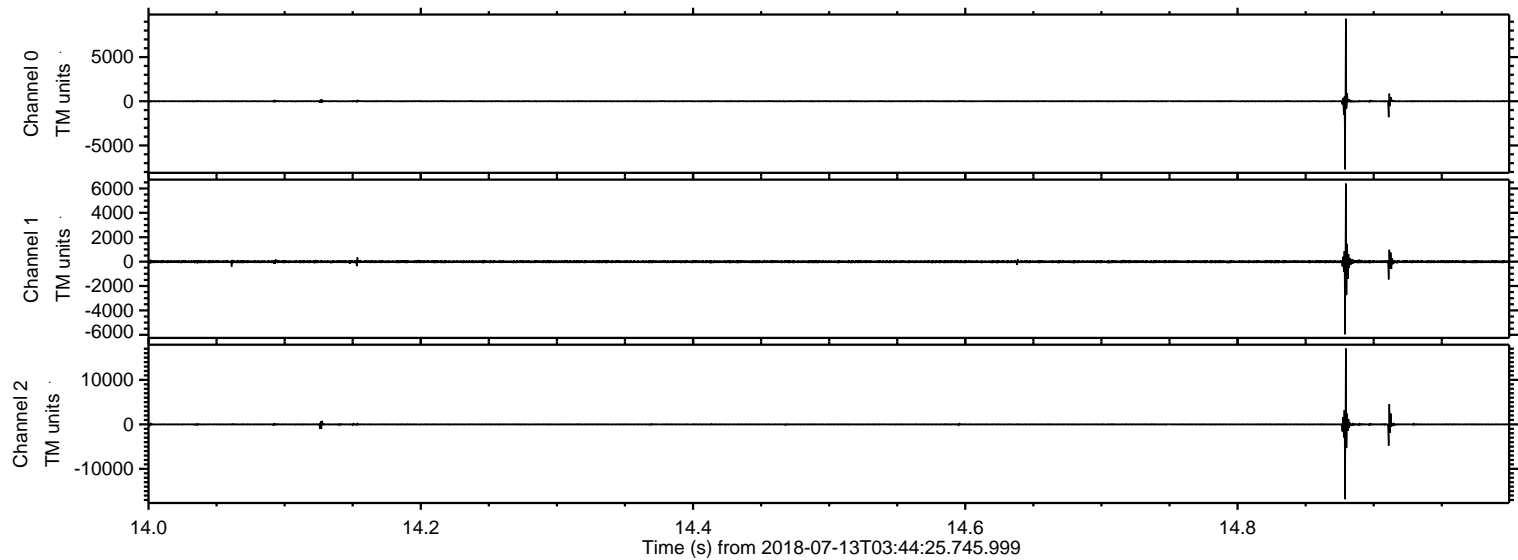


ELMAVAN 3D WAVEFORMS (Measured data sampled at 50 kHz) 50999 packets of 144 samples from 2018-07-13T03:44:25.745.999.

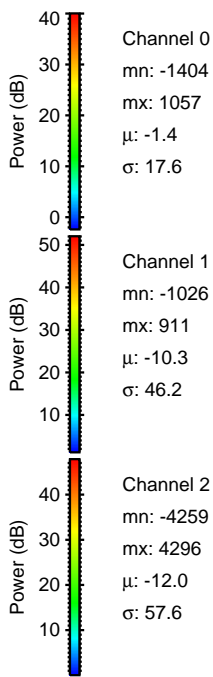
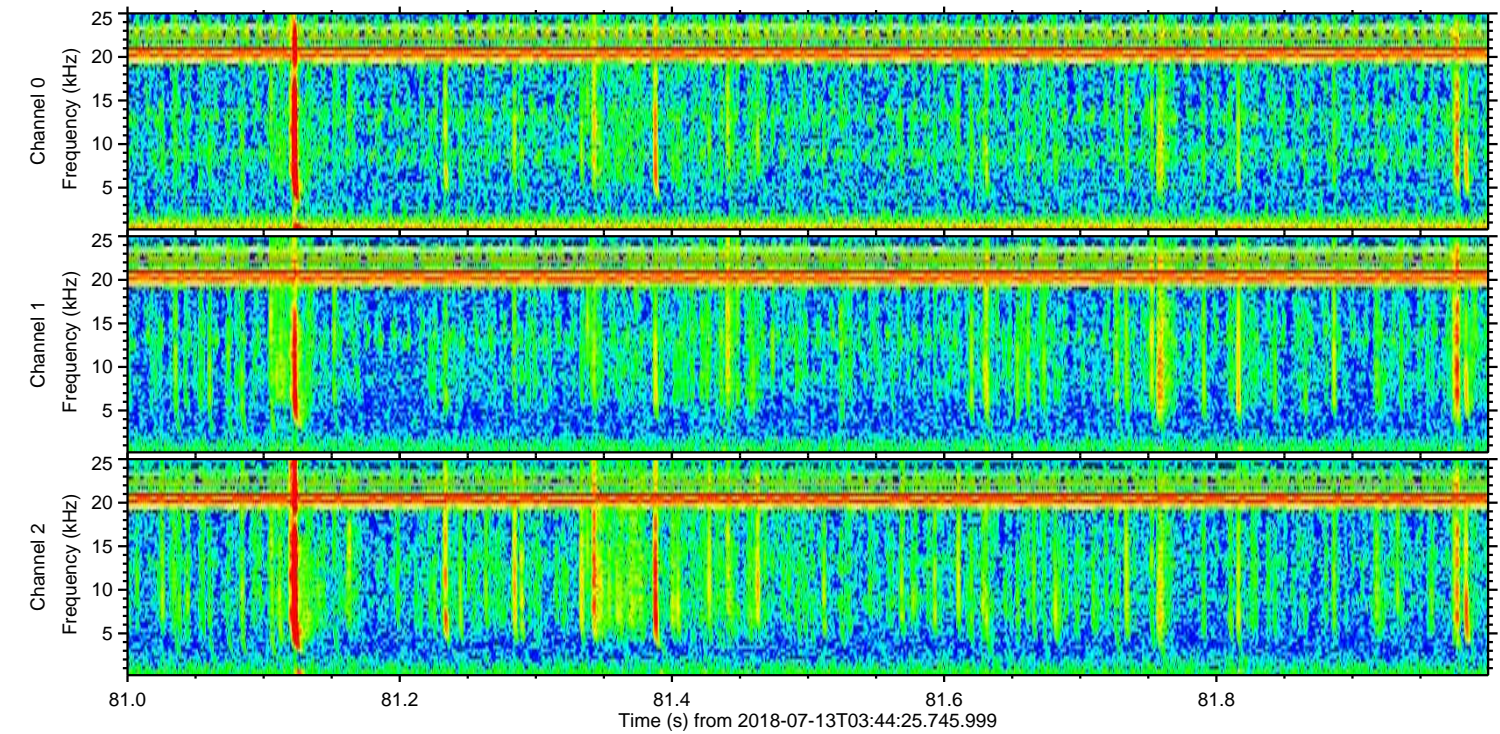
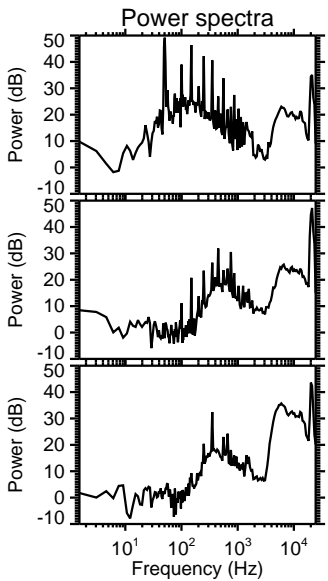
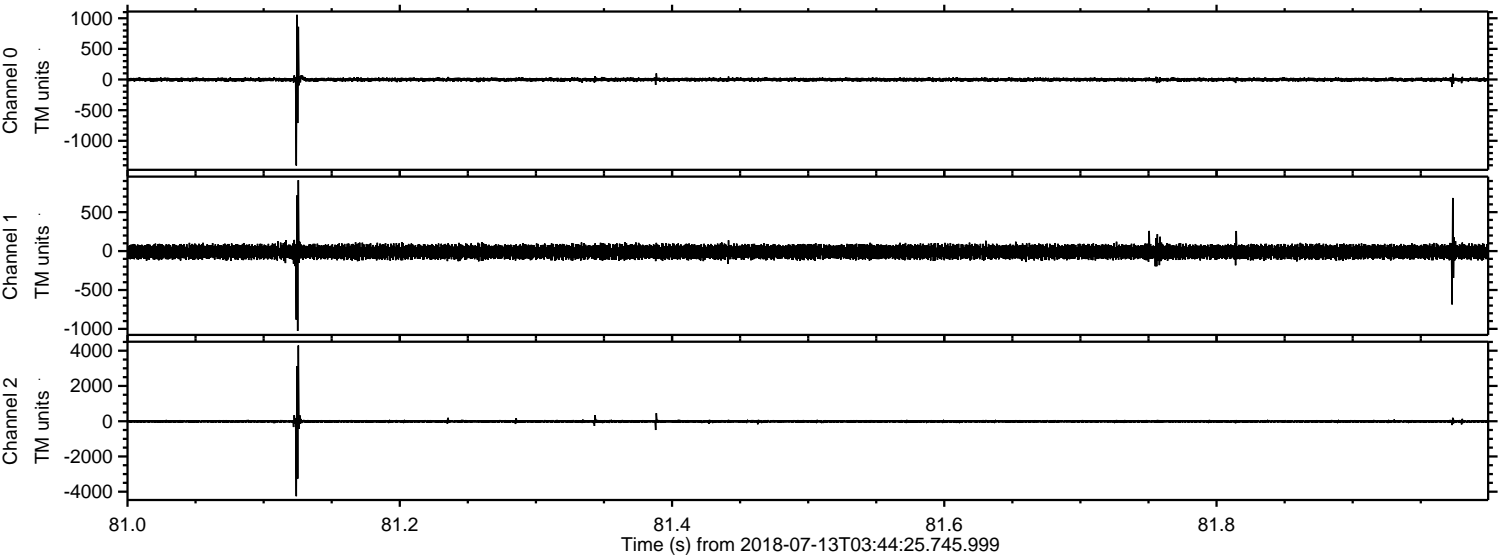
Processed Fri Jul 13 05:52:18 2018 by ELM ver.2012-10-06 from 001__elm20180713_034424__dat00.bin



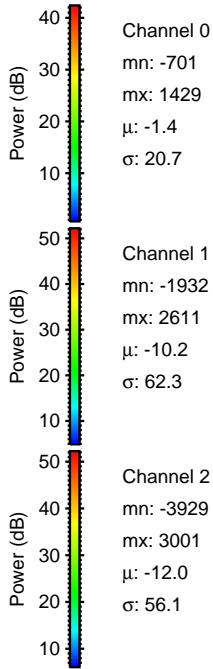
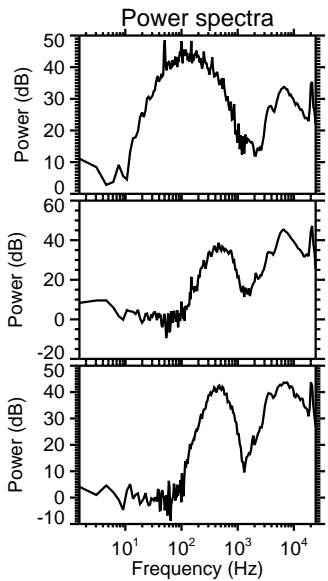
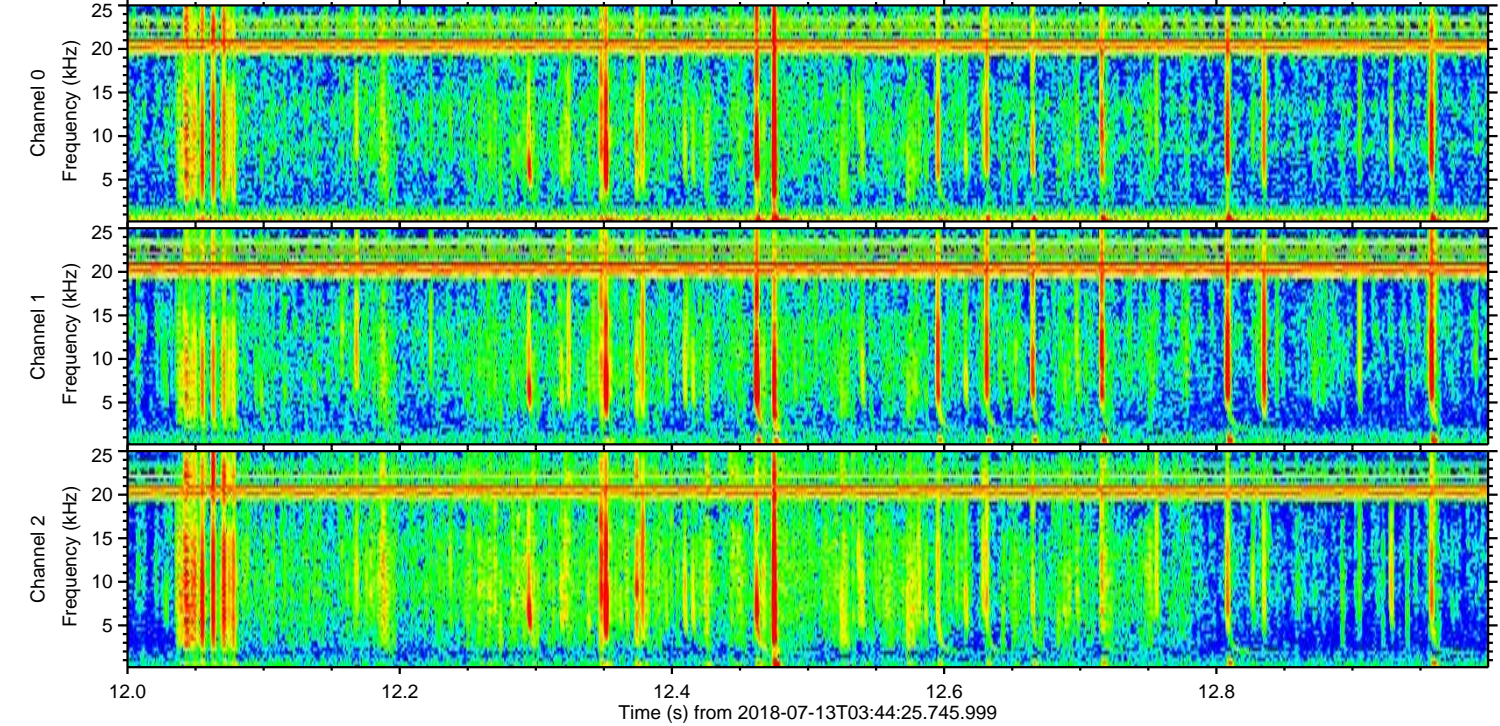
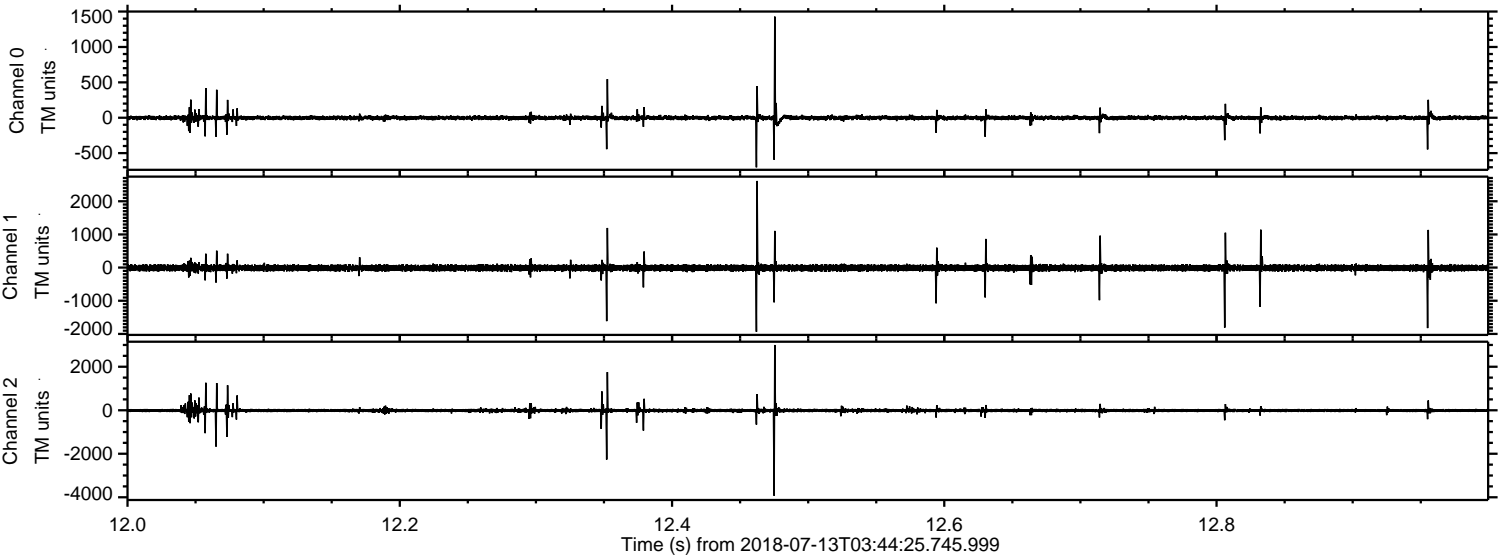
Processed Fri Jul 13 05:52:24 2018 by ELM ver.2012-10-06 from 001__elm20180713_034424__dat00.bin



Processed Fri Jul 13 05:52:25 2018 by ELM ver.2012-10-06 from 001__elm20180713_034424__dat00.bin



Processed Fri Jul 13 05:52:25 2018 by ELM ver.2012-10-06 from 001__elm20180713_034424__dat00.bin

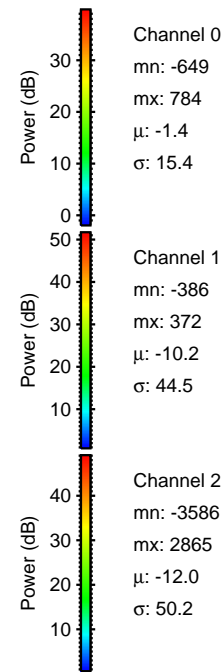
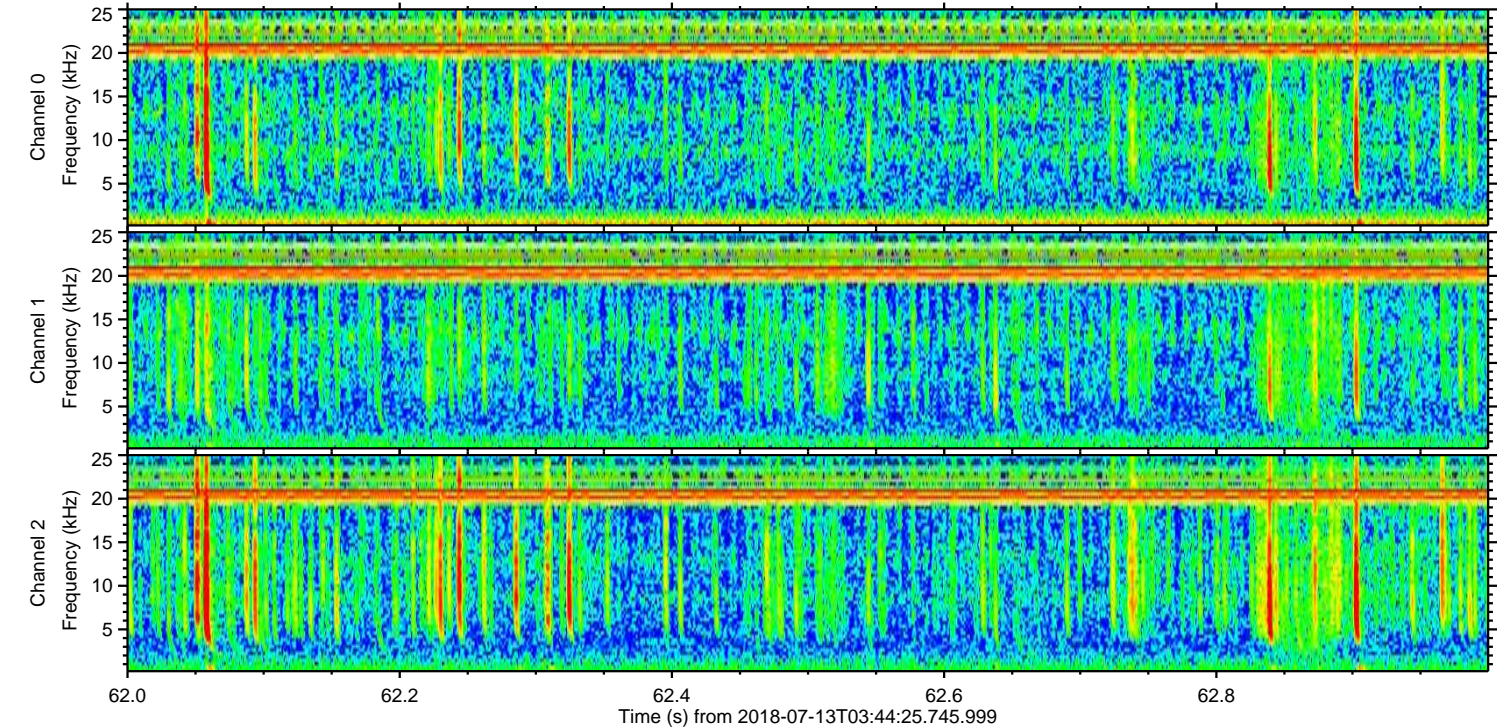
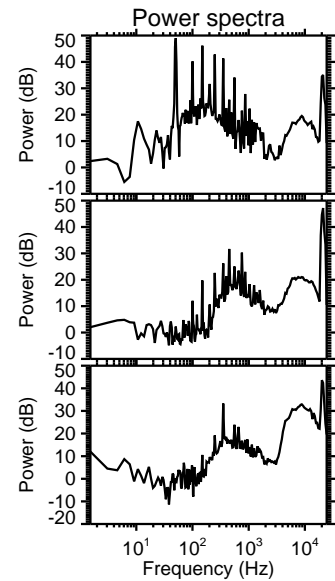
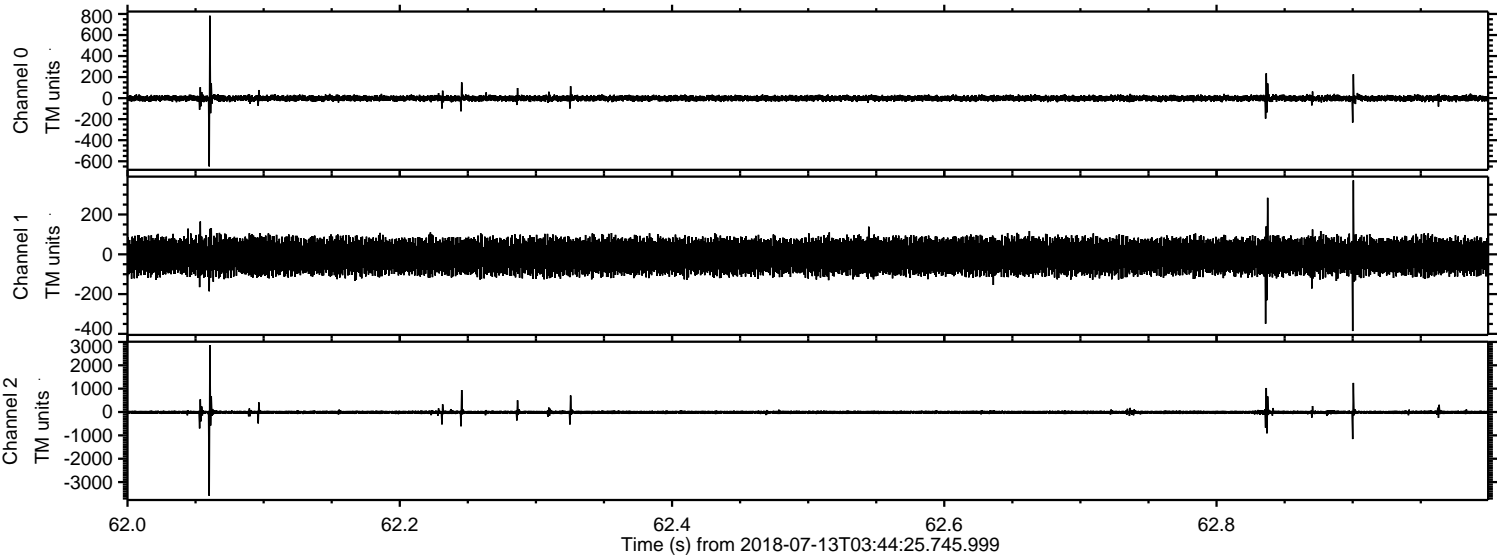


Channel 0
mn: -701
mx: 1429
 μ : -1.4
 σ : 20.7

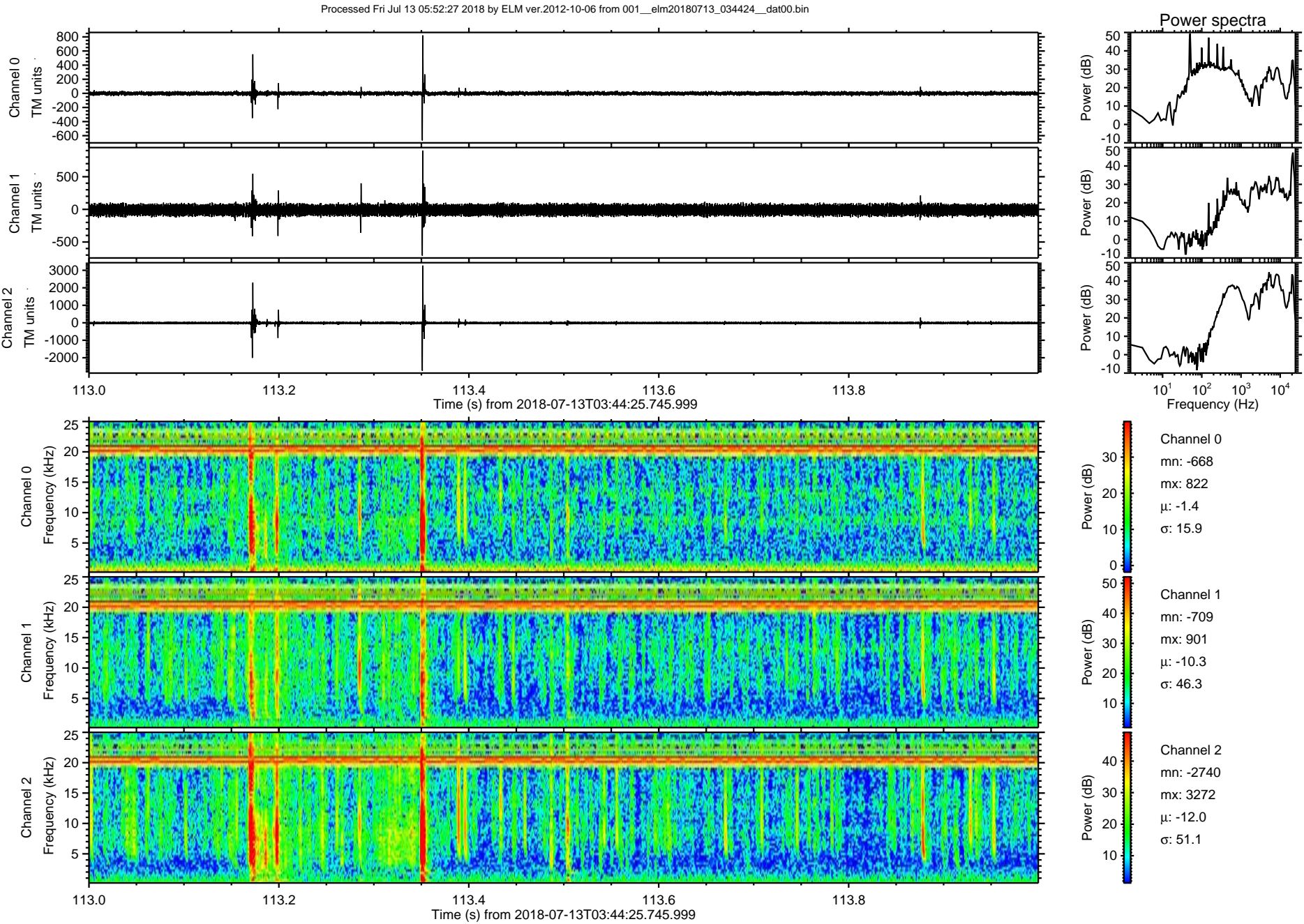
Channel 1
mn: -1932
mx: 2611
 μ : -10.2
 σ : 62.3

Channel 2
mn: -3929
mx: 3001
 μ : -12.0
 σ : 56.1

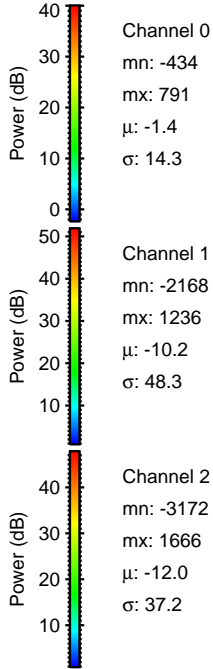
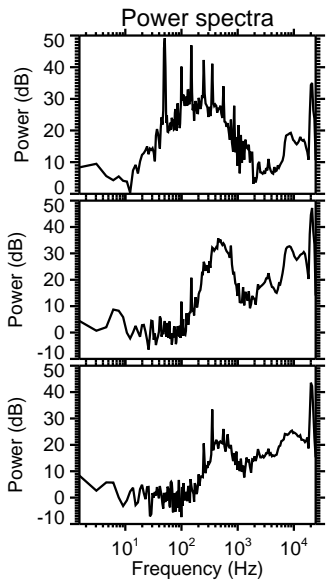
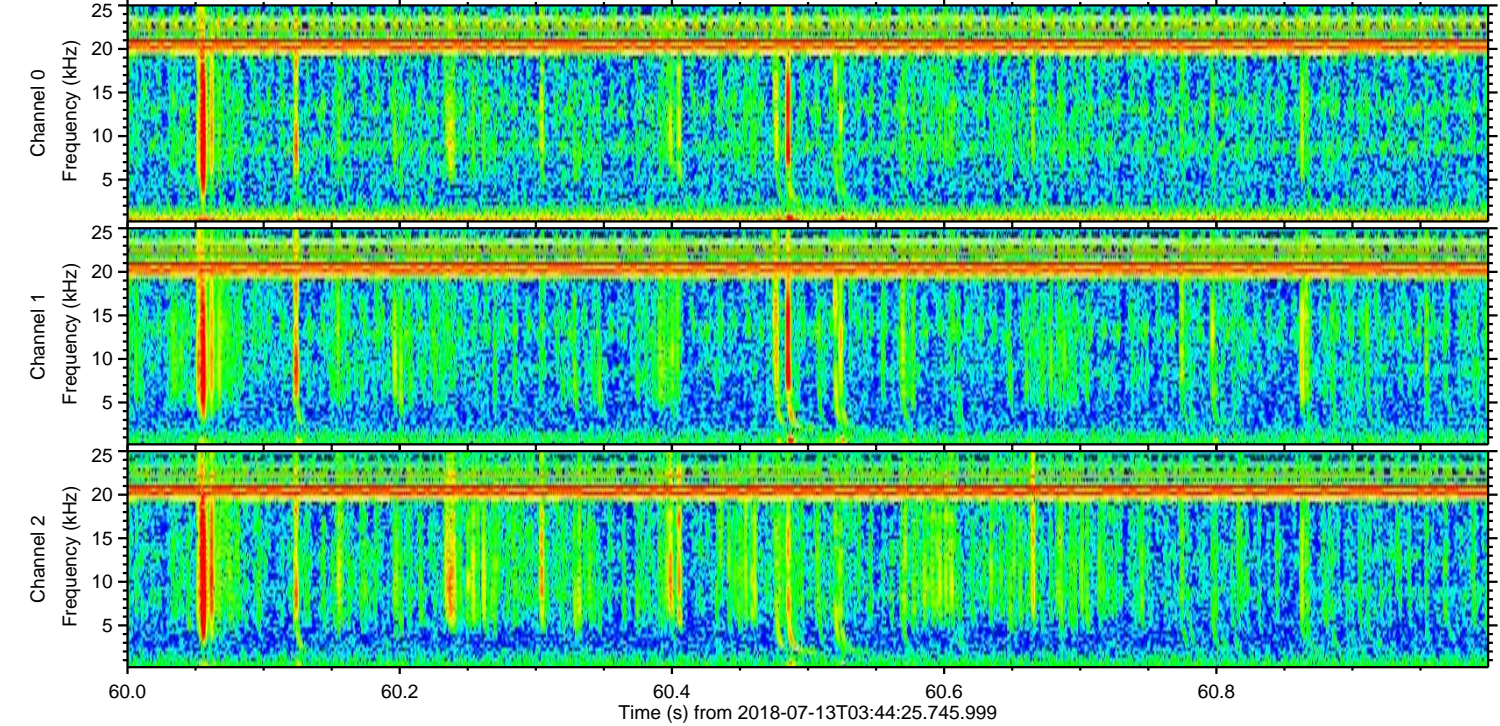
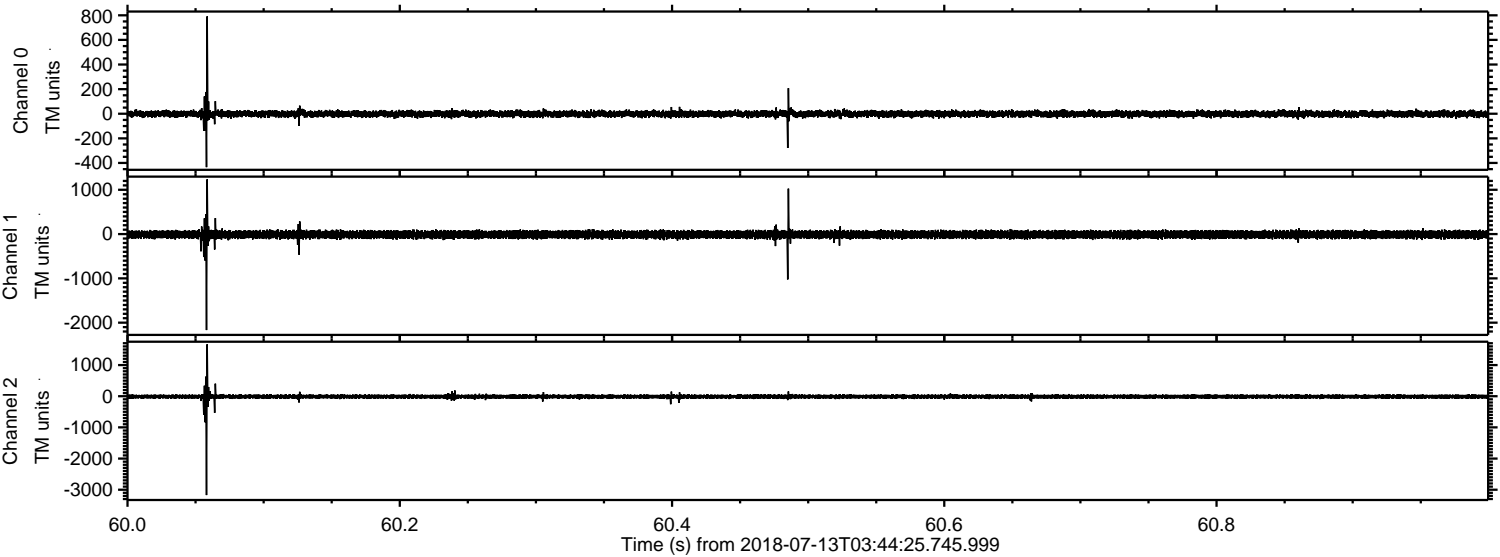
Processed Fri Jul 13 05:52:26 2018 by ELM ver.2012-10-06 from 001__elm20180713_034424__dat00.bin



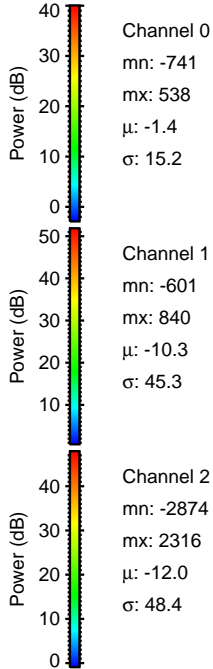
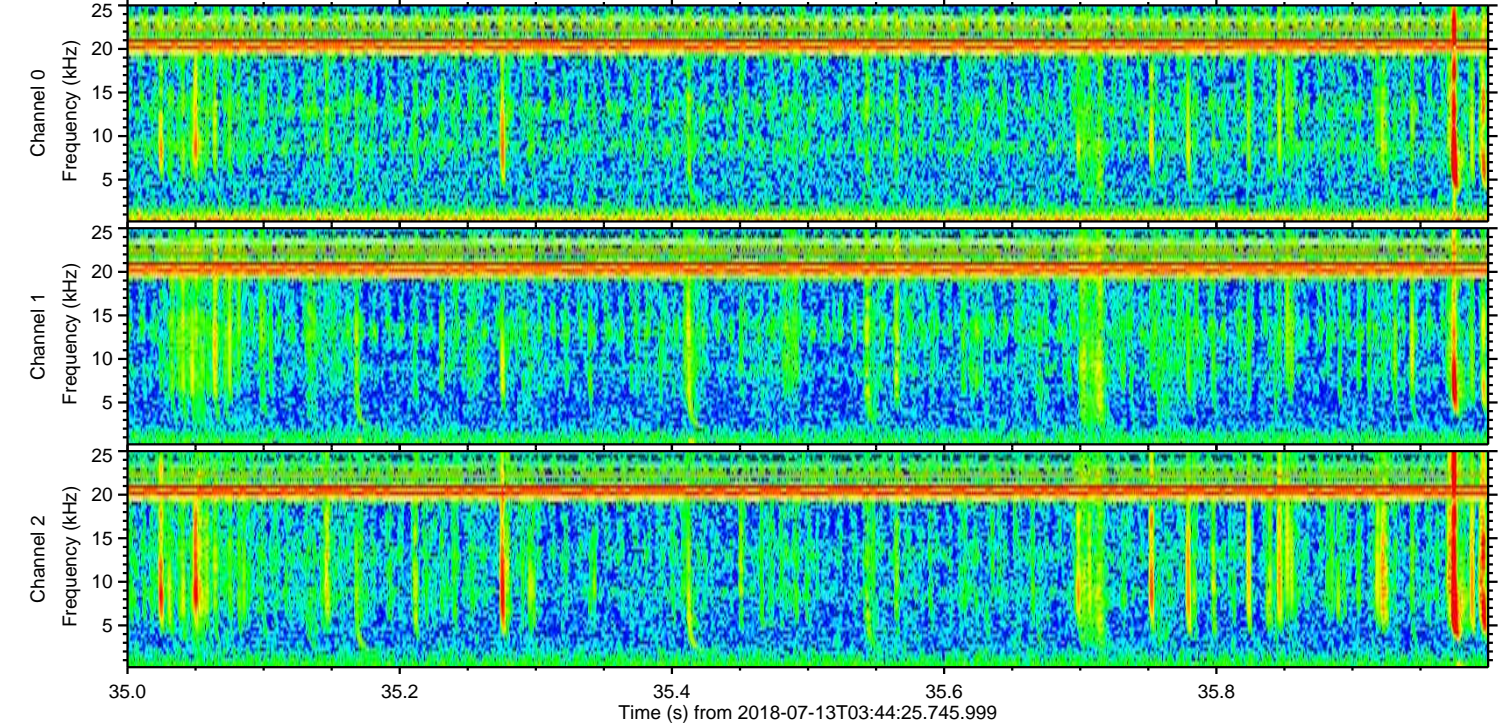
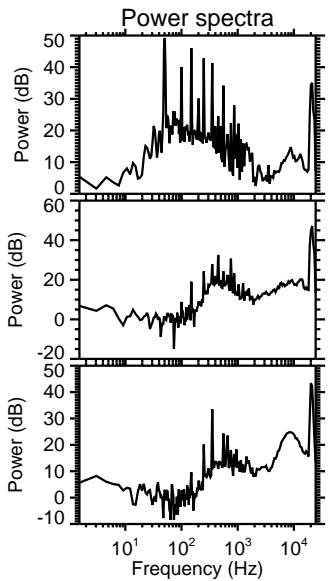
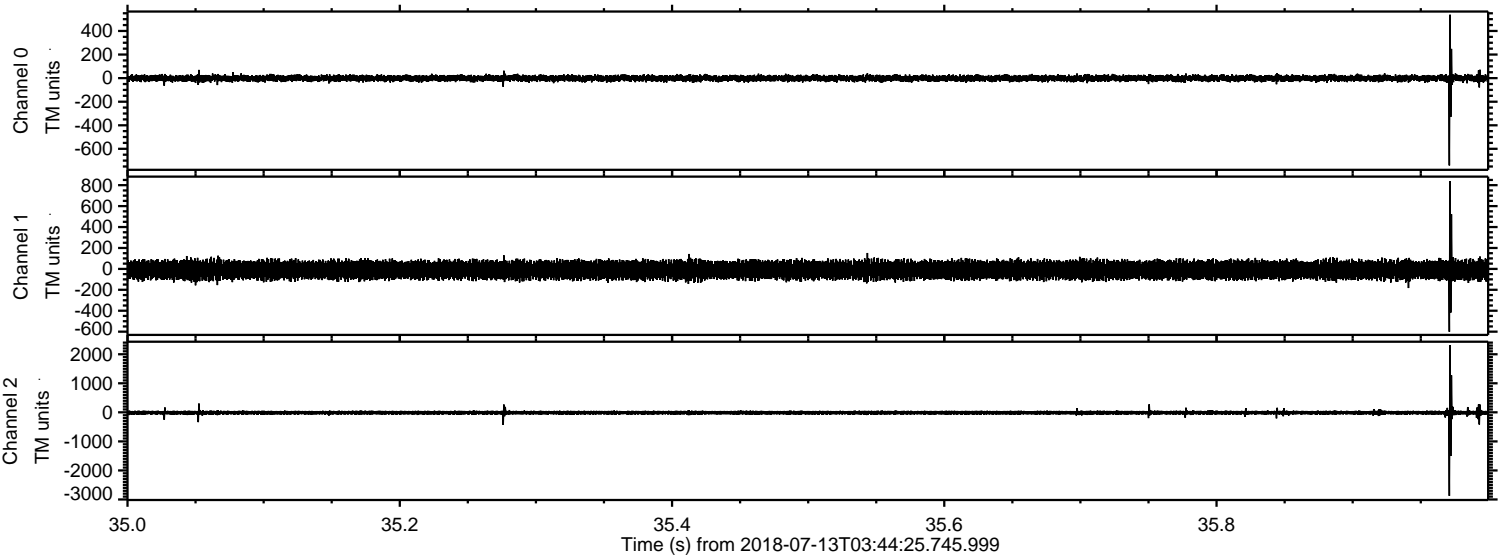
ELMAVAN 3D WAVEFORMS (Measured data sampled at 50 kHz) 50999 packets of 144 samples from 2018-07-13T03:44:25.745.999. Part 114/147



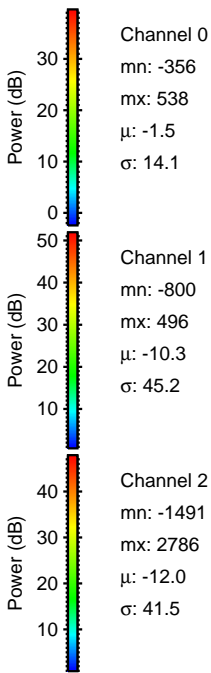
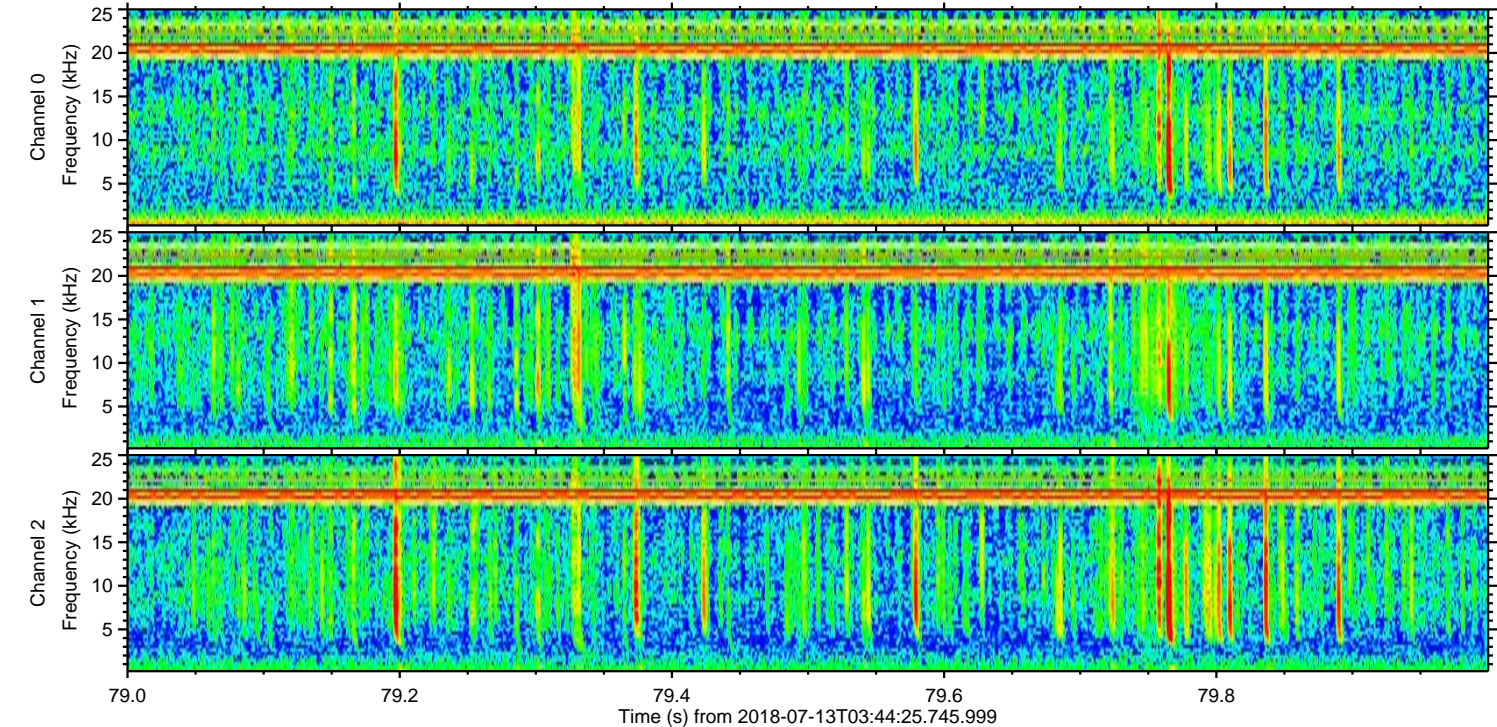
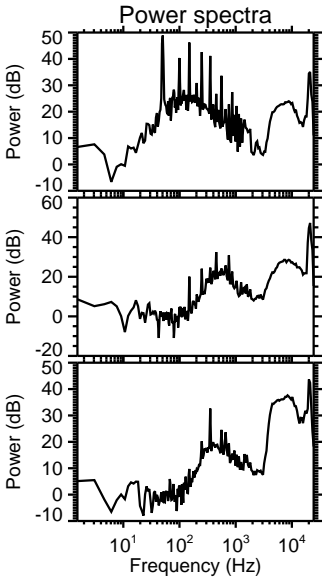
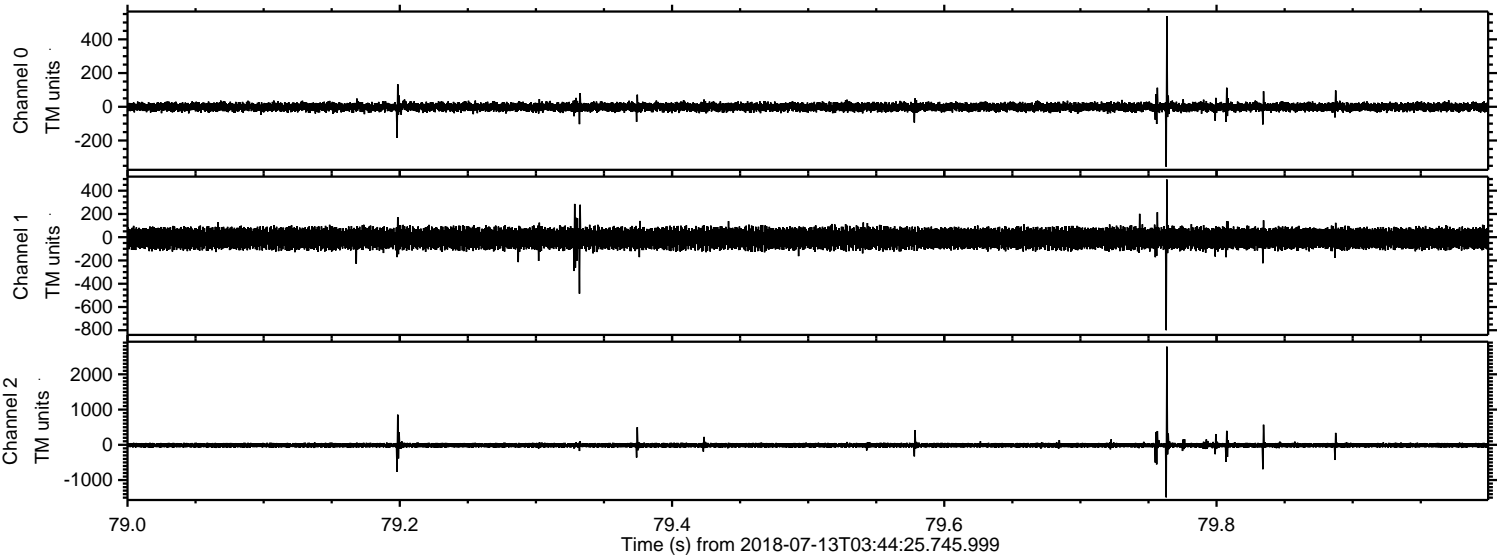
Processed Fri Jul 13 05:52:27 2018 by ELM ver.2012-10-06 from 001__elm20180713_034424__dat00.bin



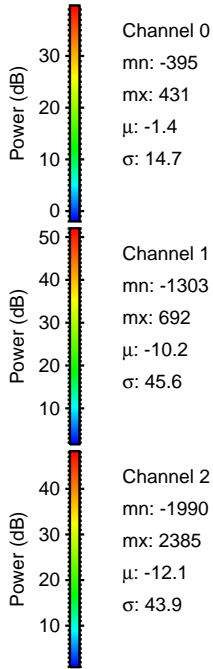
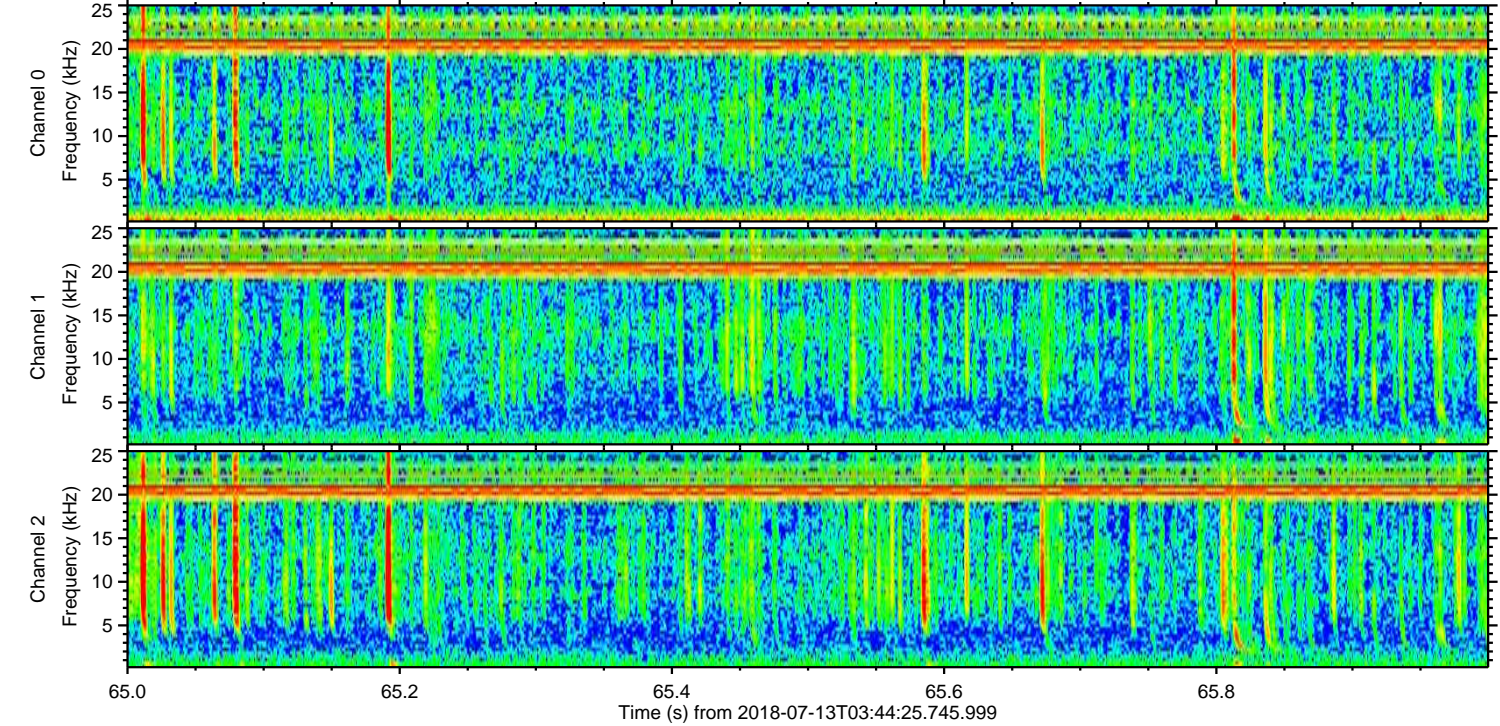
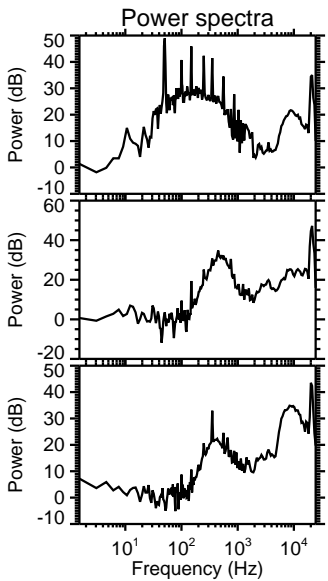
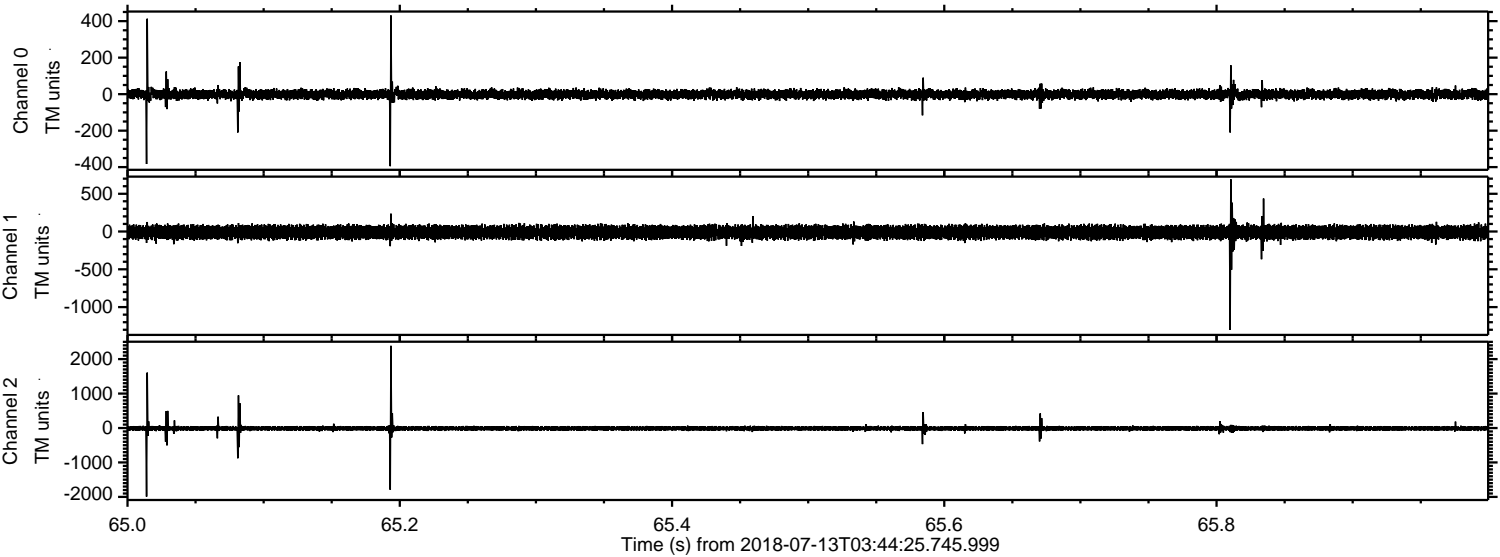
Processed Fri Jul 13 05:52:28 2018 by ELM ver.2012-10-06 from 001__elm20180713_034424__dat00.bin



Processed Fri Jul 13 05:52:29 2018 by ELM ver.2012-10-06 from 001__elm20180713_034424__dat00.bin



Processed Fri Jul 13 05:52:29 2018 by ELM ver.2012-10-06 from 001__elm20180713_034424__dat00.bin



Channel 0
mn: -395
mx: 431
 μ : -1.4
 σ : 14.7

Channel 1
mn: -1303
mx: 692
 μ : -10.2
 σ : 45.6

Channel 2
mn: -1990
mx: 2385
 μ : -12.1
 σ : 43.9

