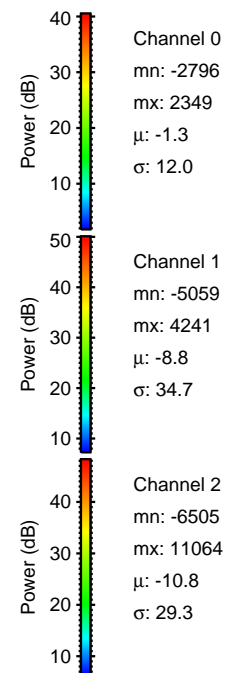
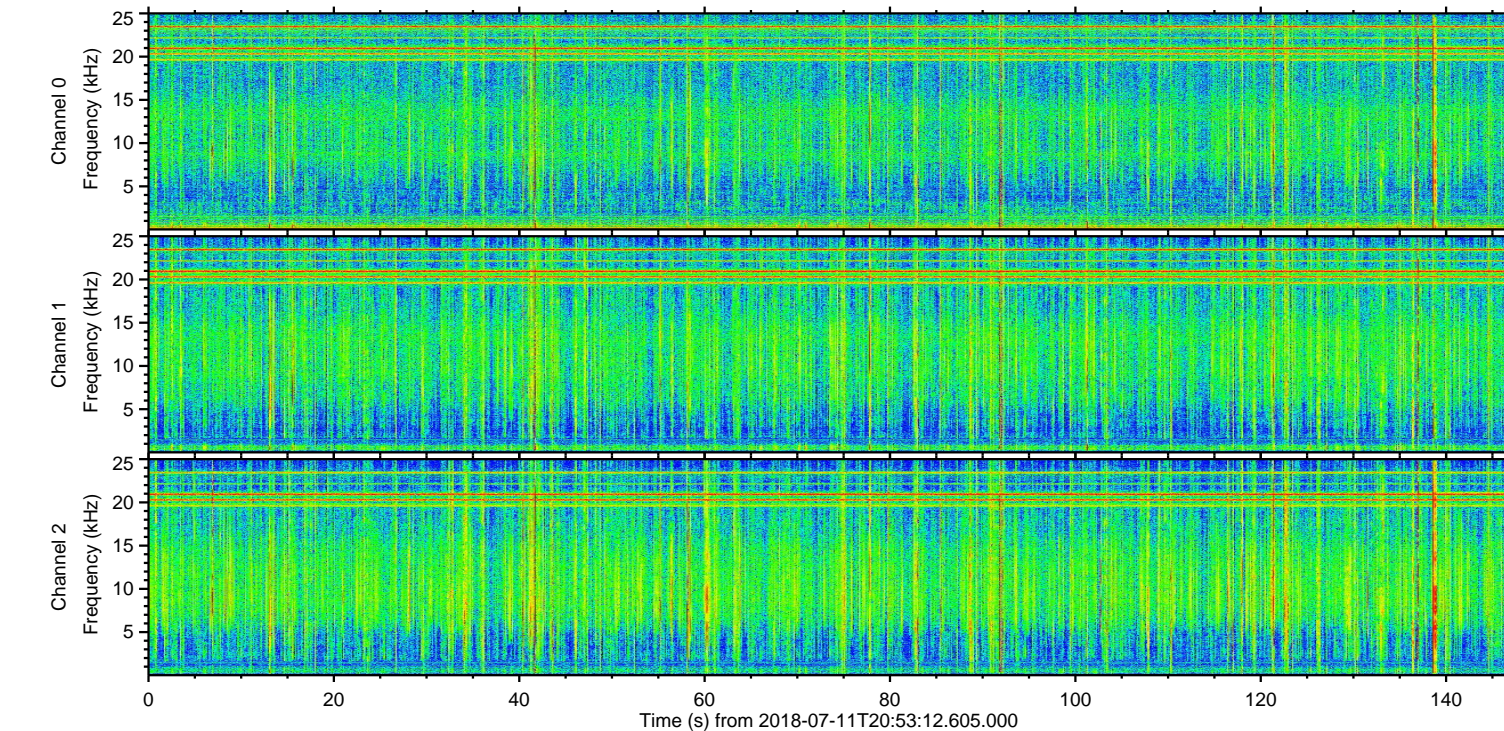
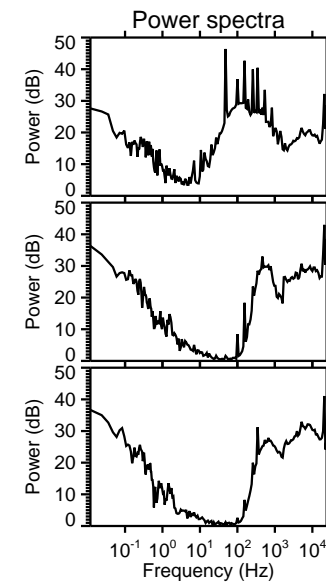
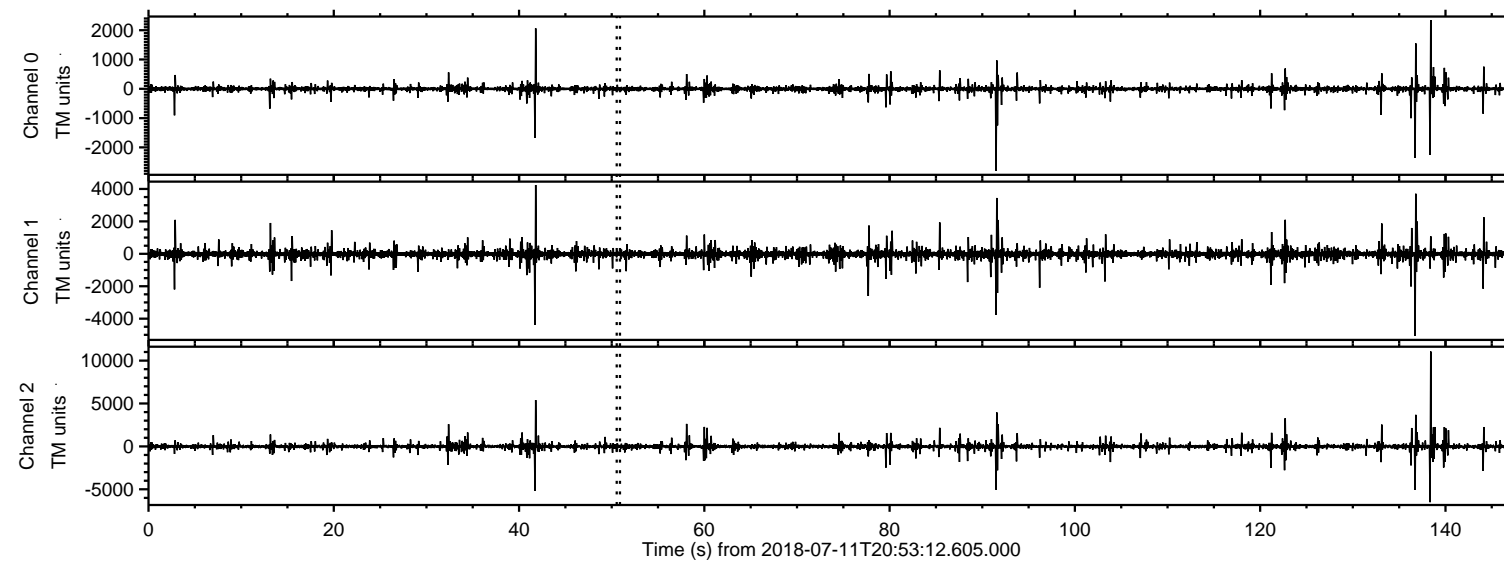


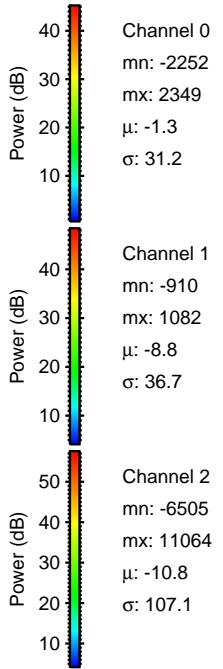
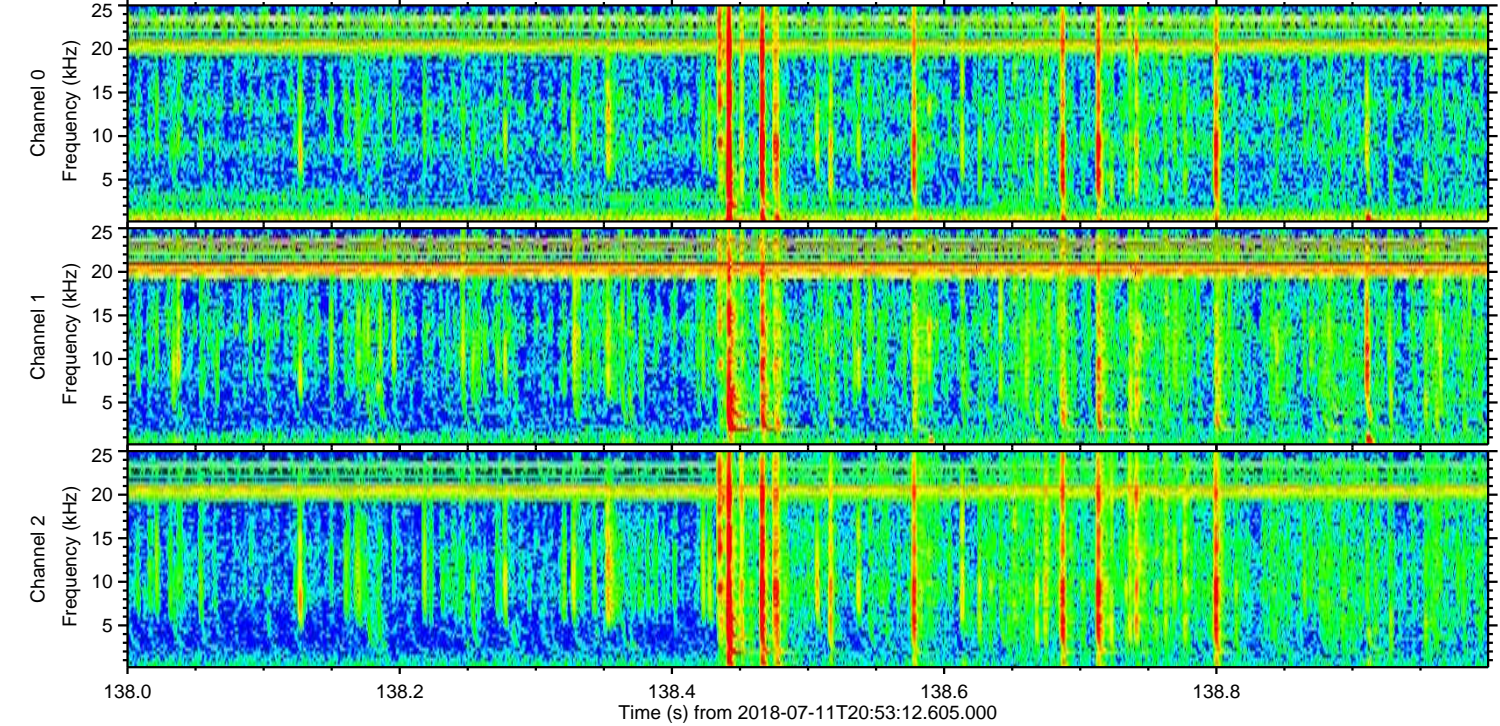
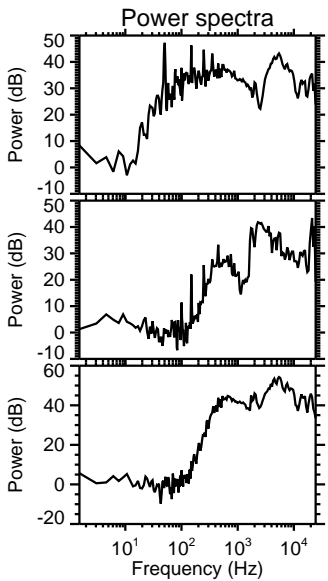
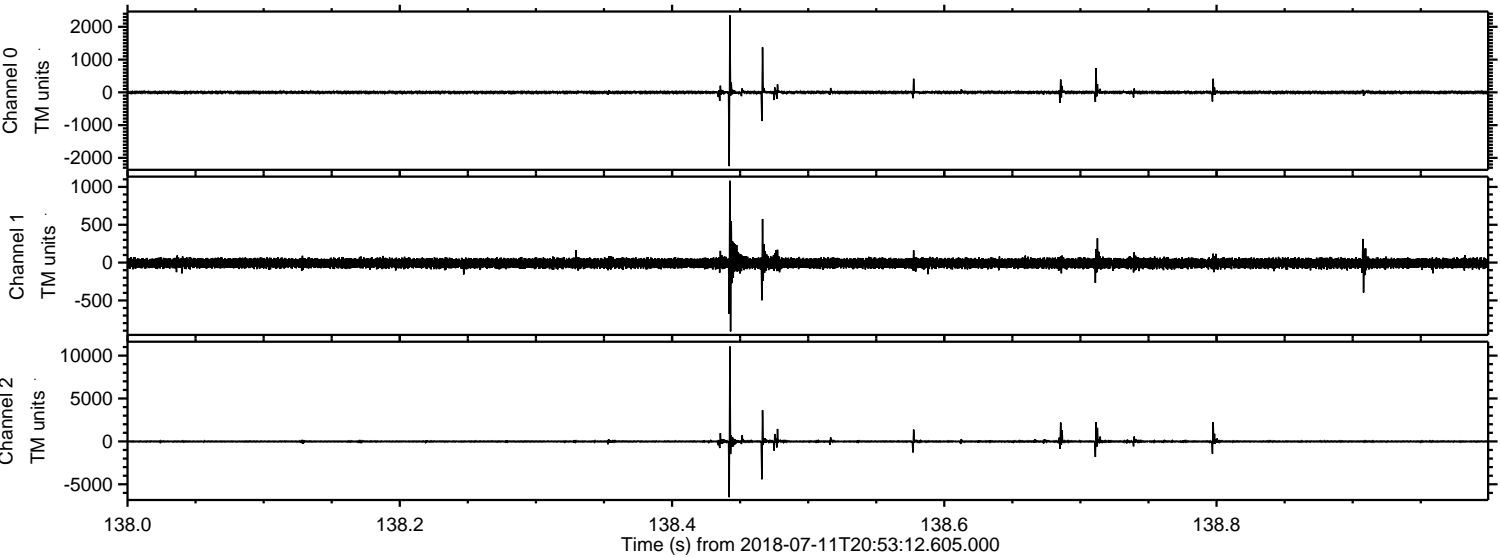
ELMAVAN 3D WAVEFORMS (Measured data sampled at 50 kHz) 50998 packets of 144 samples from 2018-07-11T20:53:12.605.000.

Processed Wed Jul 11 23:01:06 2018 by ELM ver.2012-10-06 from 001__elm20180711_205311__dat00.bin



ELMAVAN 3D WAVEFORMS (Measured data sampled at 50 kHz) 50998 packets of 144 samples from 2018-07-11T20:53:12.605.000. Part 139/147

Processed Wed Jul 11 23:01:11 2018 by ELM ver.2012-10-06 from 001__elm20180711_205311__dat00.bin

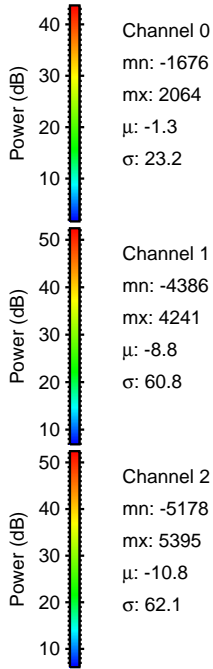
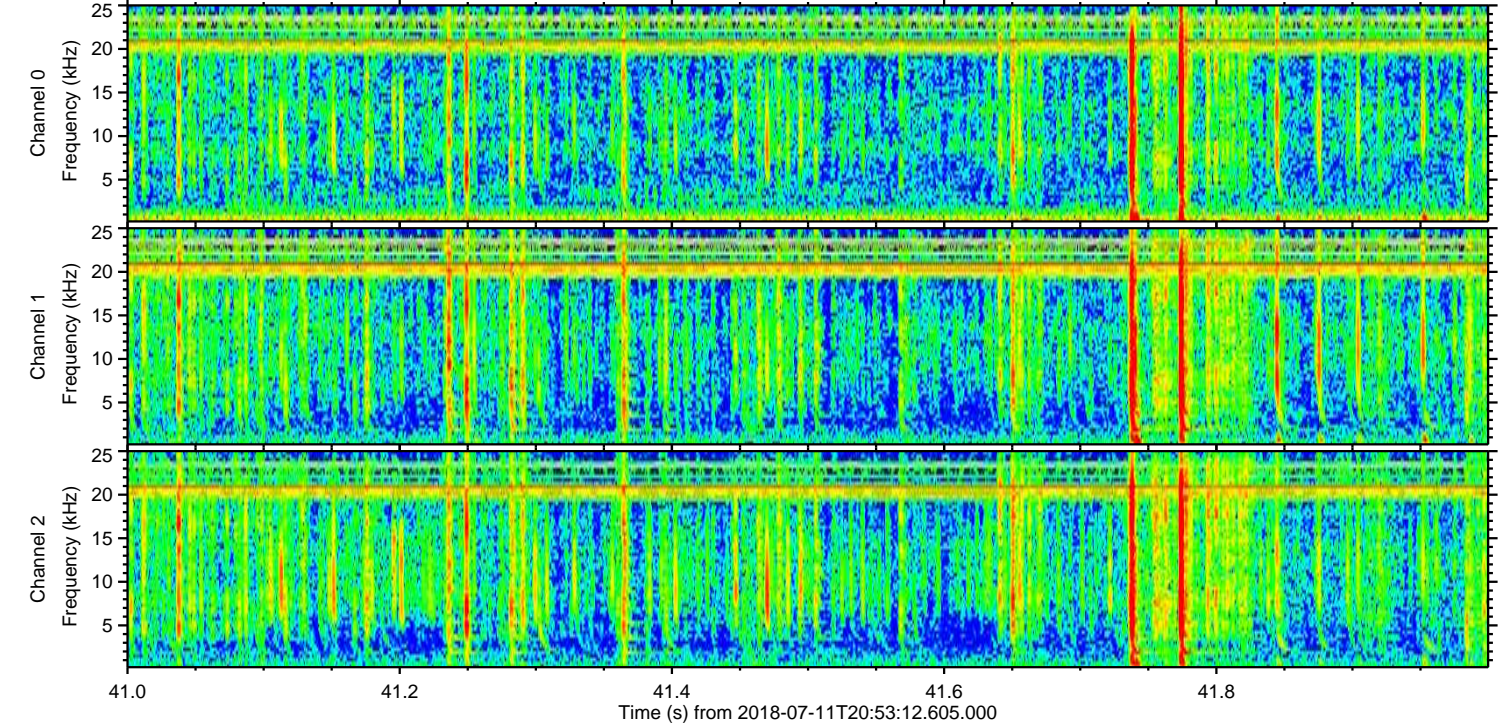
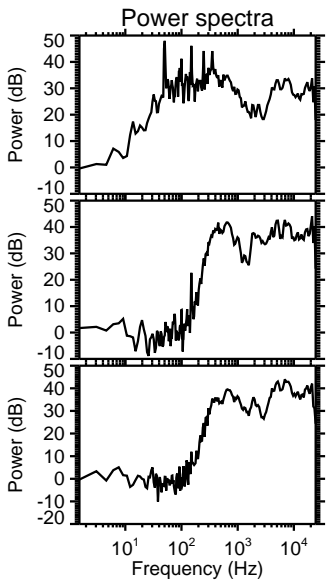
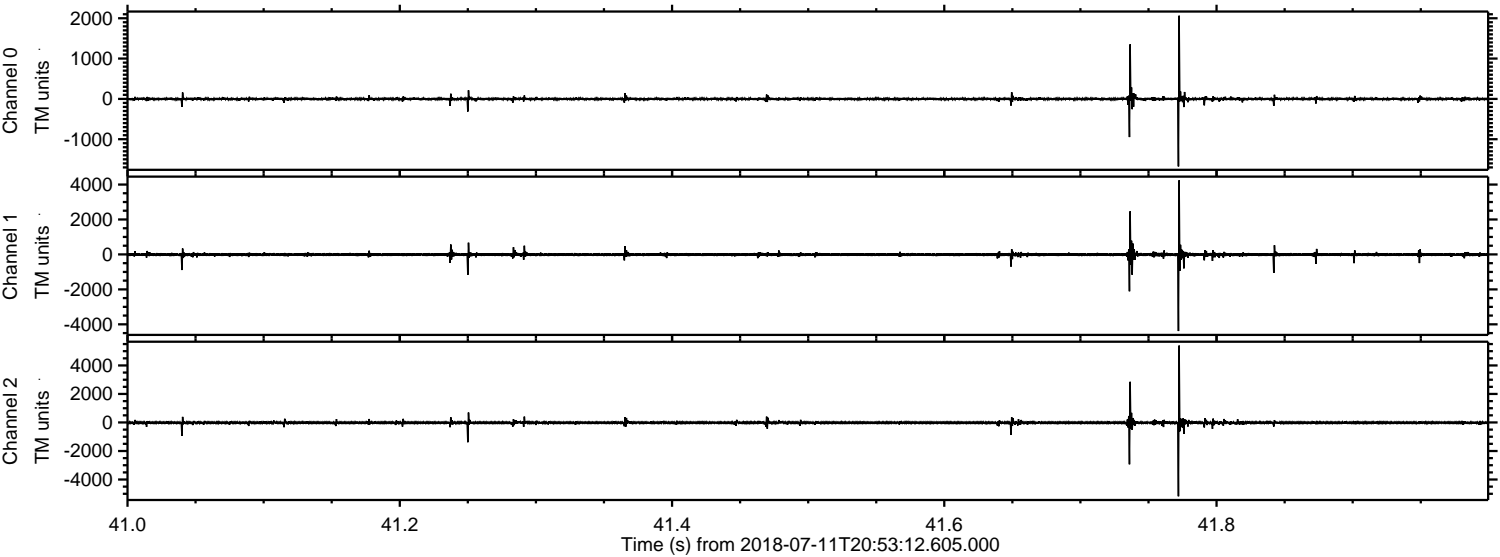


Channel 0
mn: -2252
mx: 2349
 μ : -1.3
 σ : 31.2

Channel 1
mn: -910
mx: 1082
 μ : -8.8
 σ : 36.7

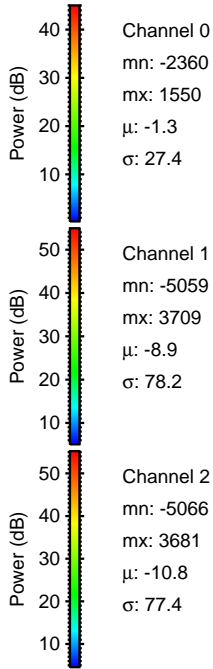
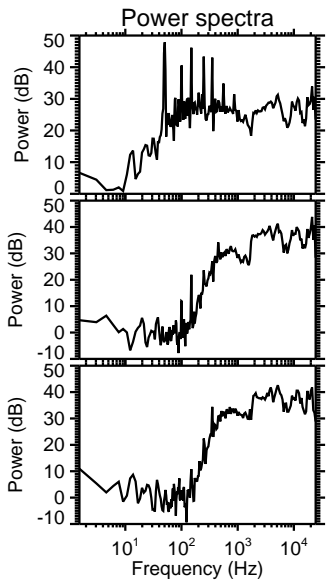
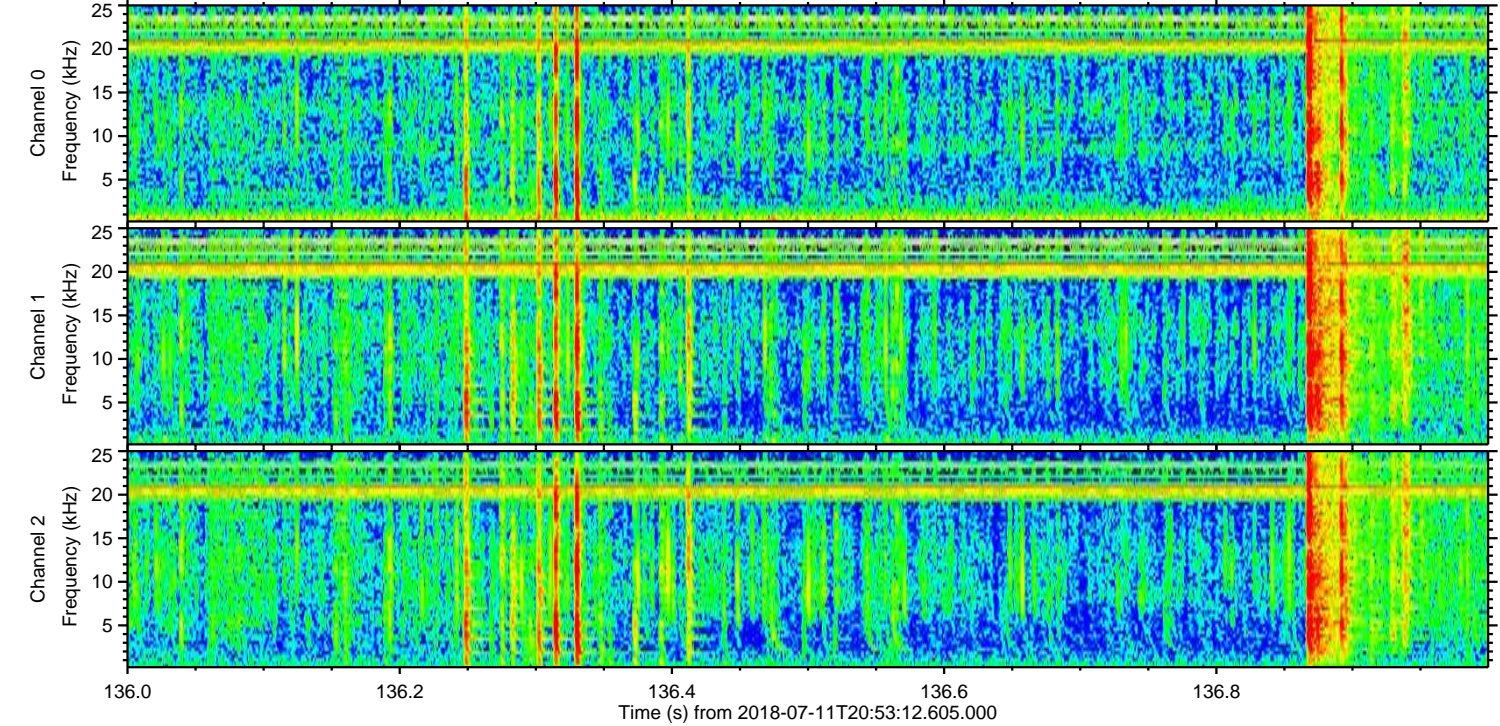
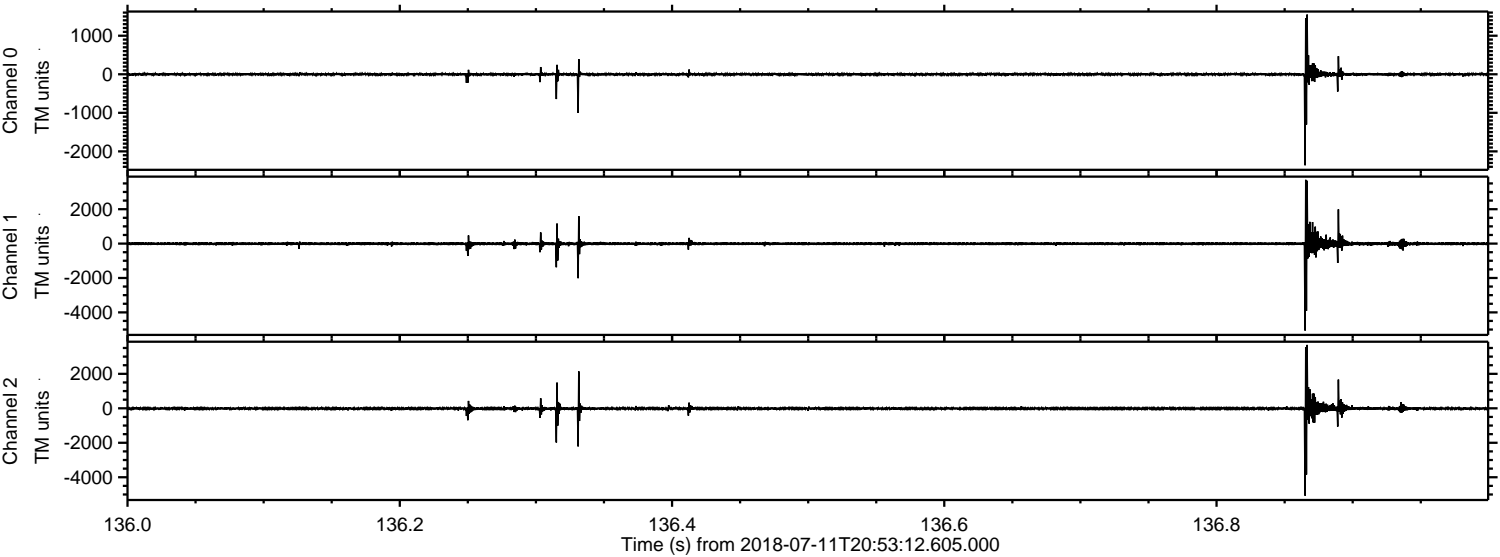
Channel 2
mn: -6505
mx: 11064
 μ : -10.8
 σ : 107.1

Processed Wed Jul 11 23:01:12 2018 by ELM ver.2012-10-06 from 001__elm20180711_205311__dat00.bin

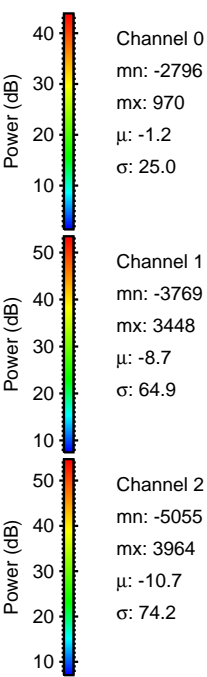
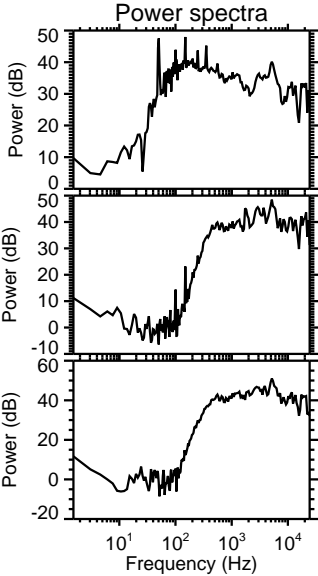
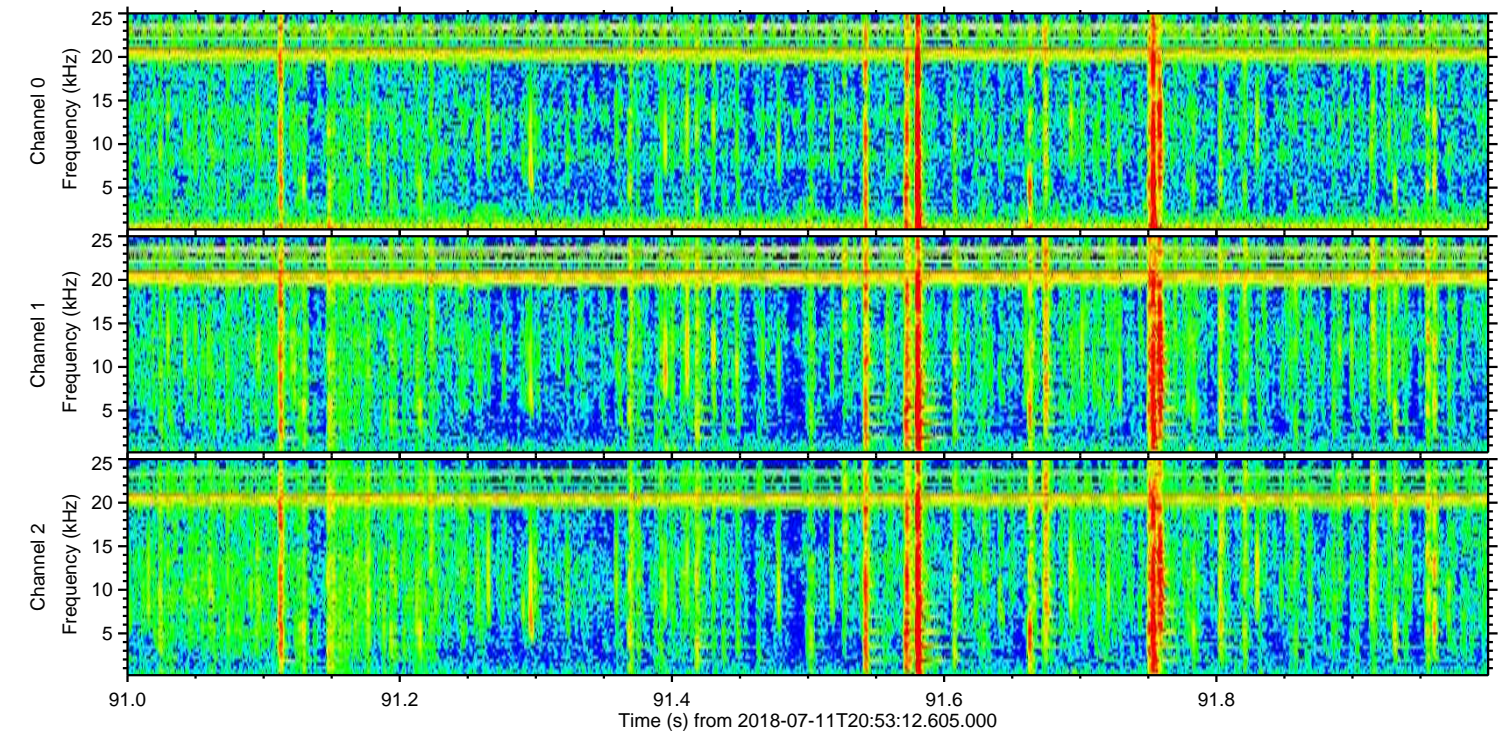
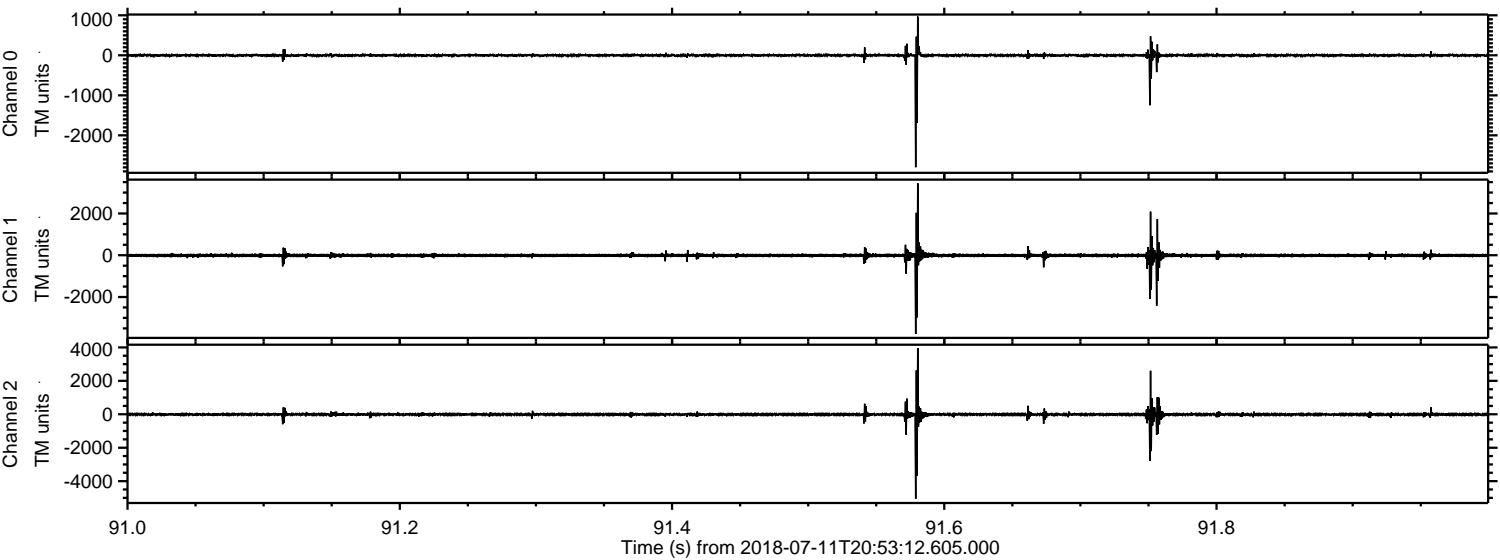


ELMAVAN 3D WAVEFORMS (Measured data sampled at 50 kHz) 50998 packets of 144 samples from 2018-07-11T20:53:12.605.000. Part 137/147

Processed Wed Jul 11 23:01:13 2018 by ELM ver.2012-10-06 from 001__elm20180711_205311__dat00.bin

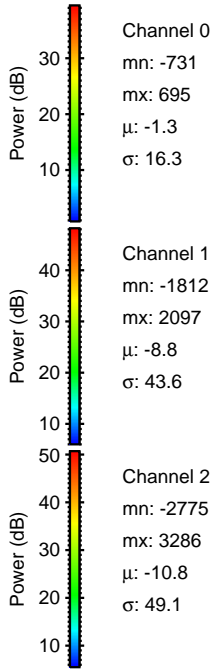
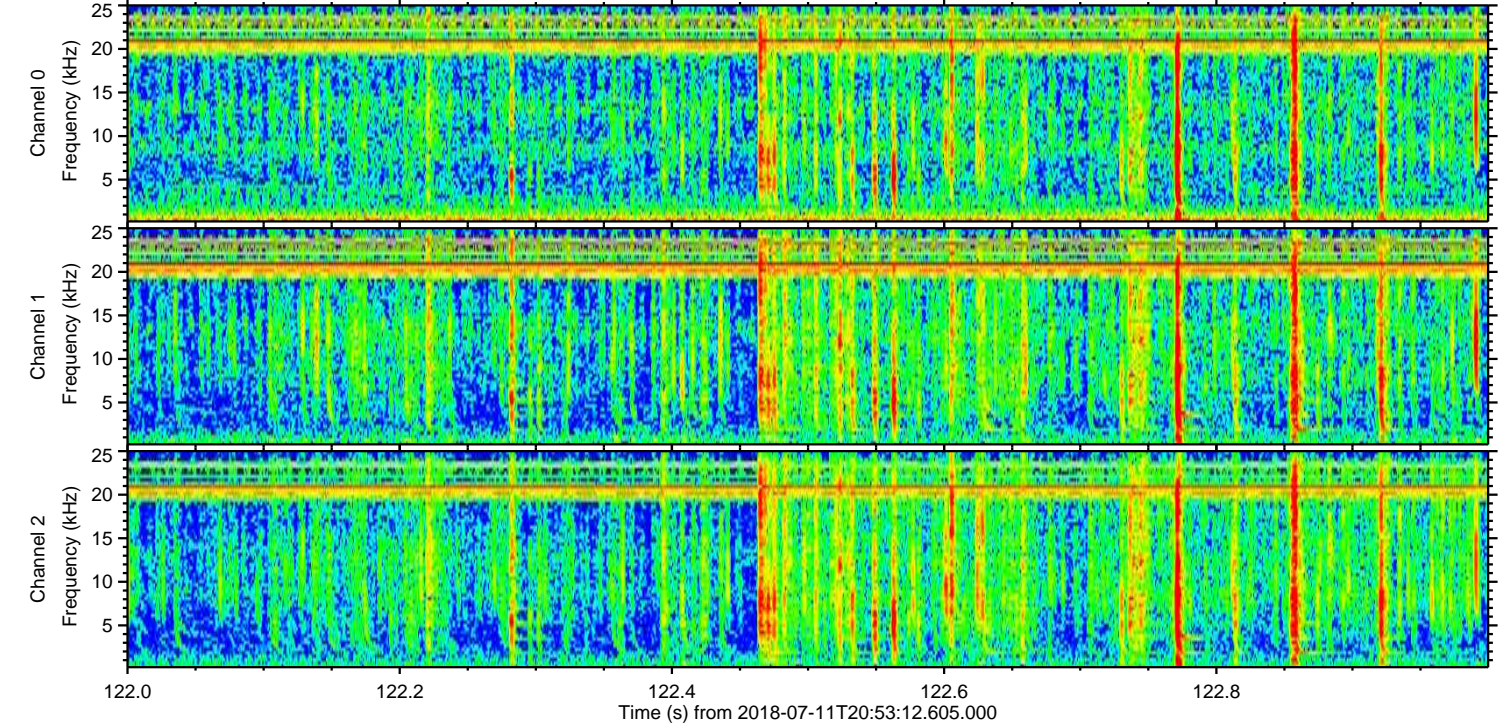
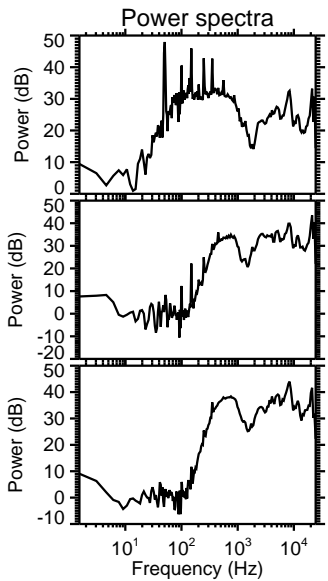
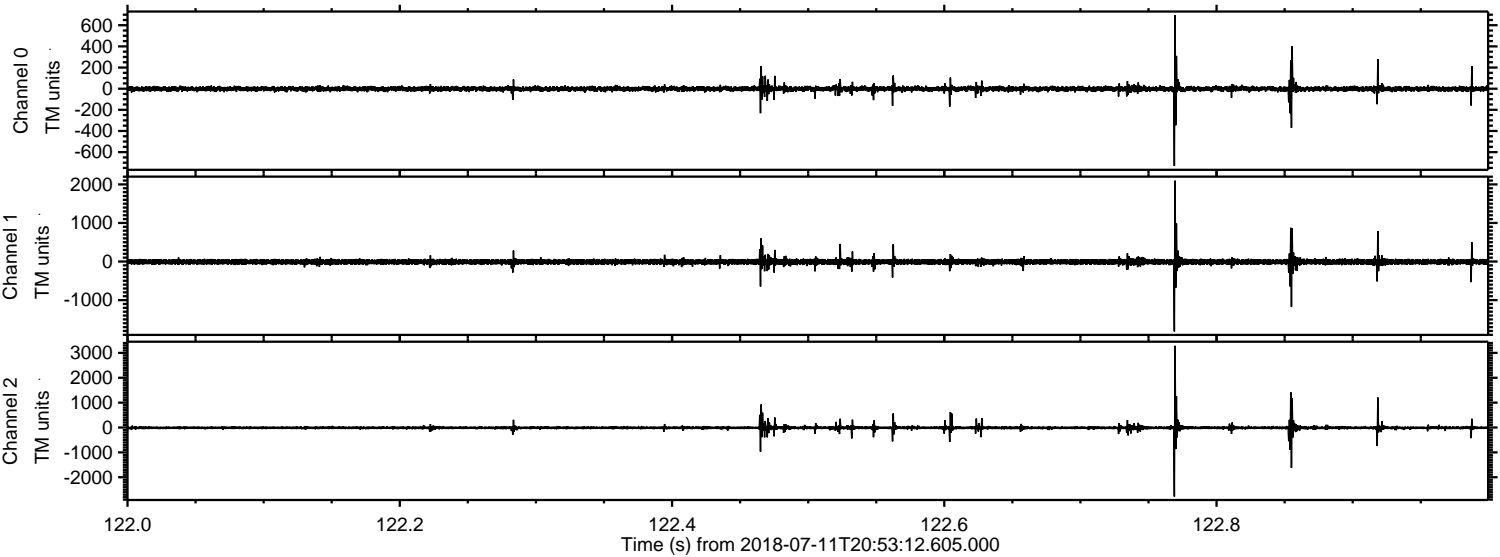


Processed Wed Jul 11 23:01:13 2018 by ELM ver.2012-10-06 from 001__elm20180711_205311__dat00.bin



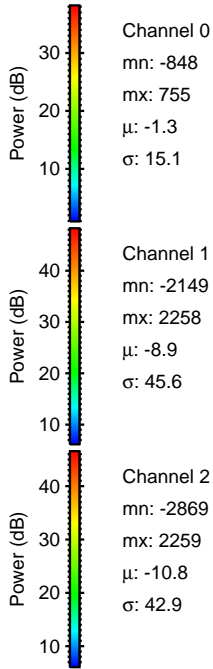
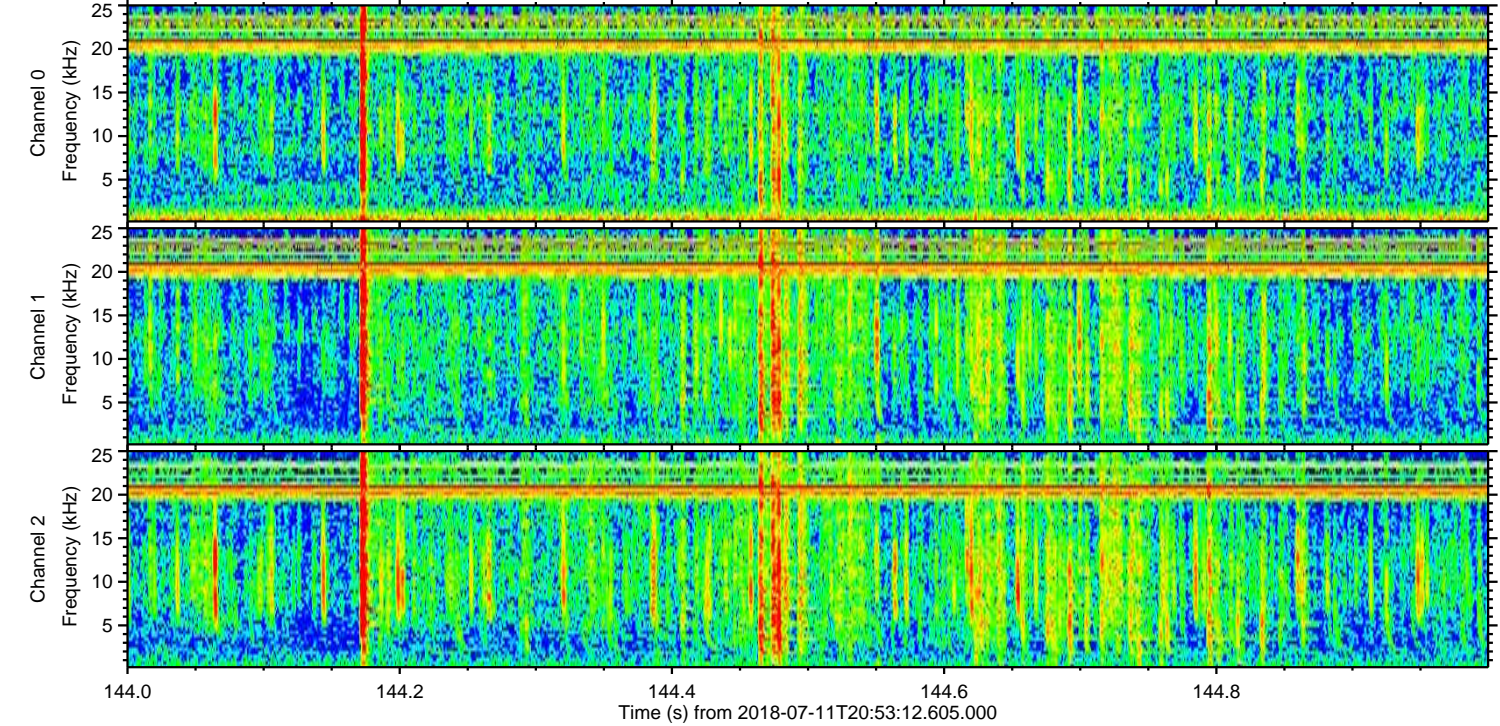
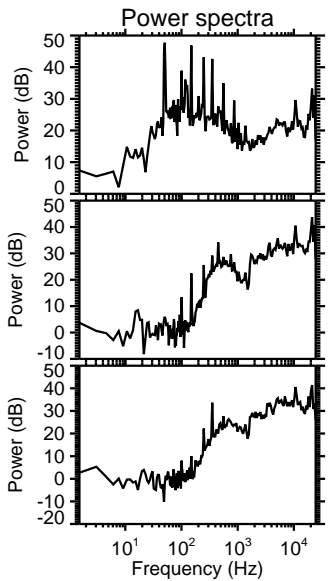
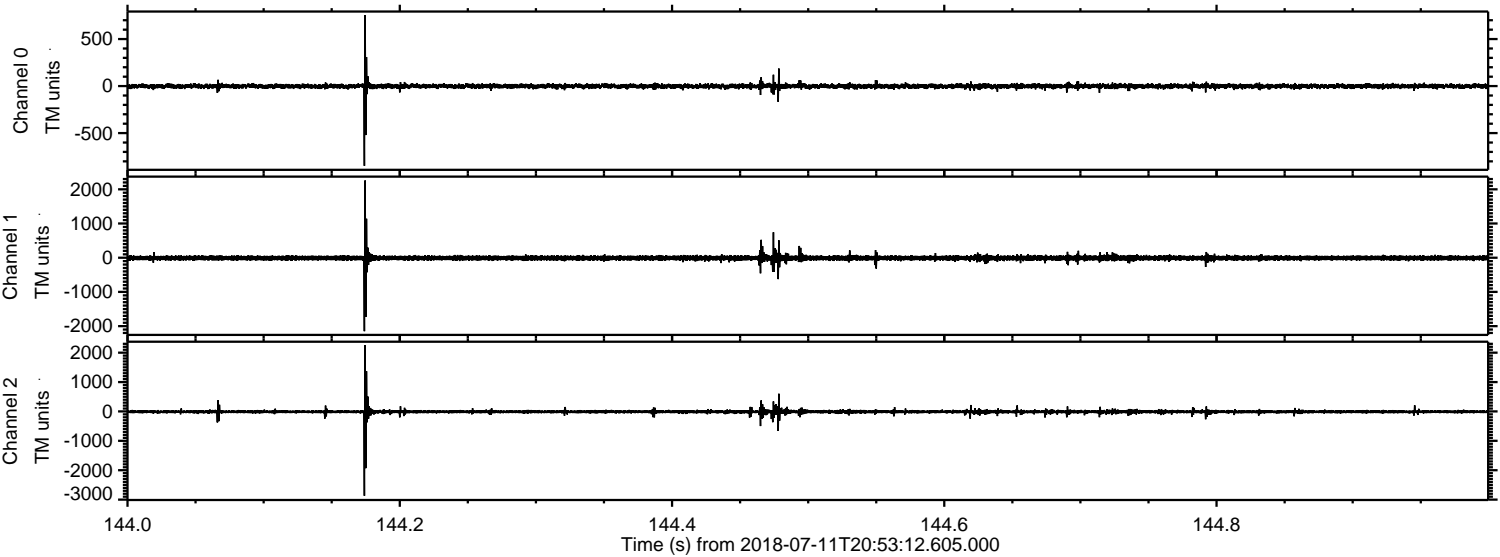
ELMAVAN 3D WAVEFORMS (Measured data sampled at 50 kHz) 50998 packets of 144 samples from 2018-07-11T20:53:12.605.000. Part 123/147

Processed Wed Jul 11 23:01:14 2018 by ELM ver.2012-10-06 from 001__elm20180711_205311__dat00.bin

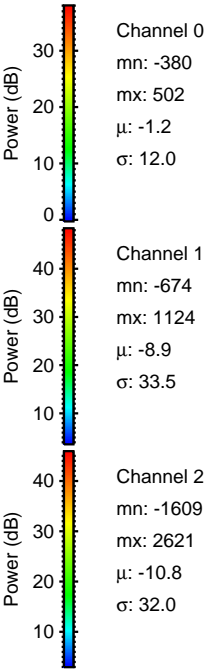
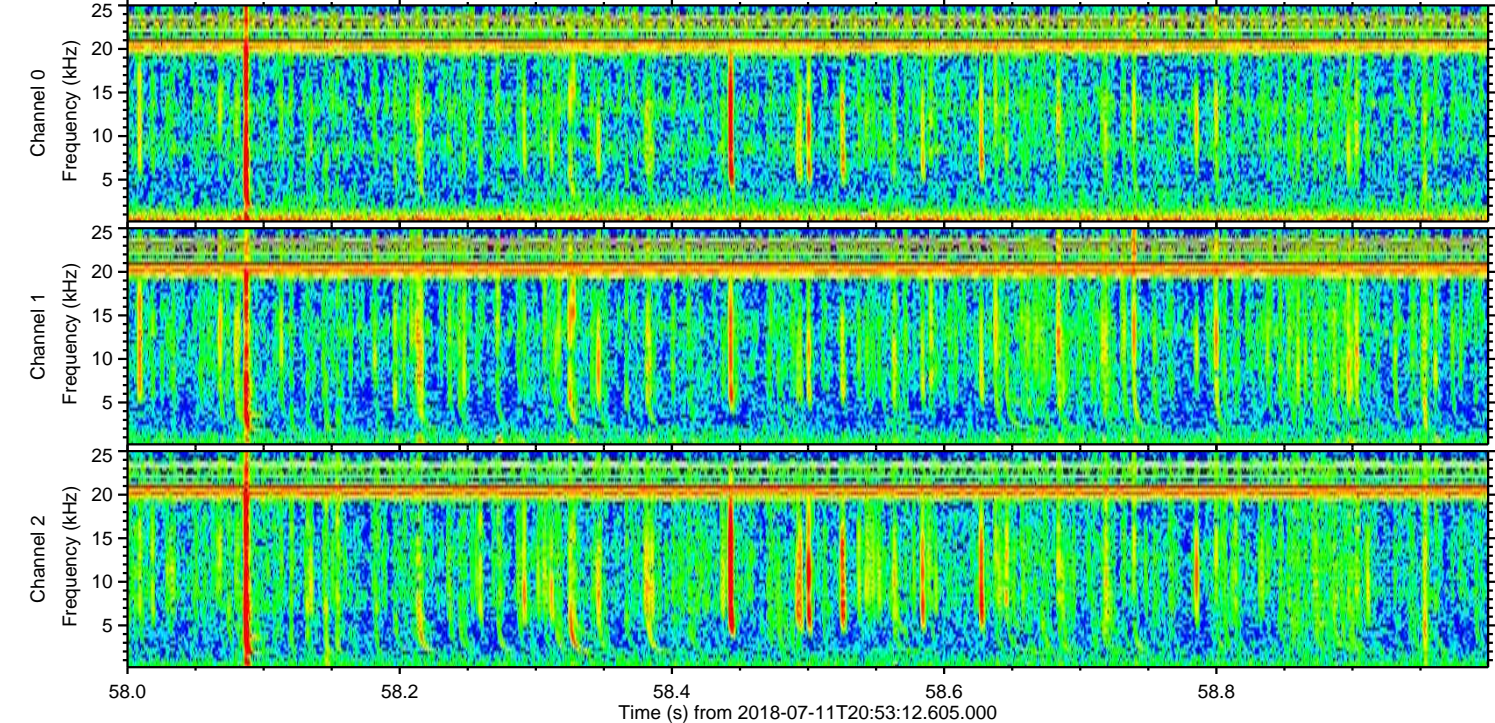
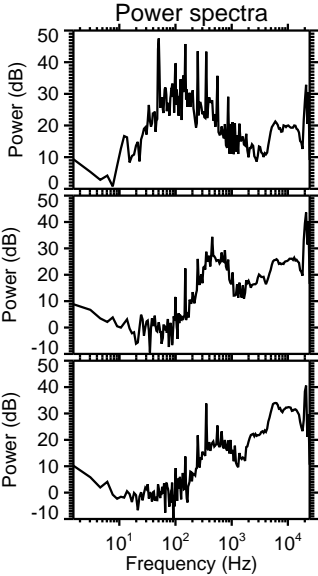
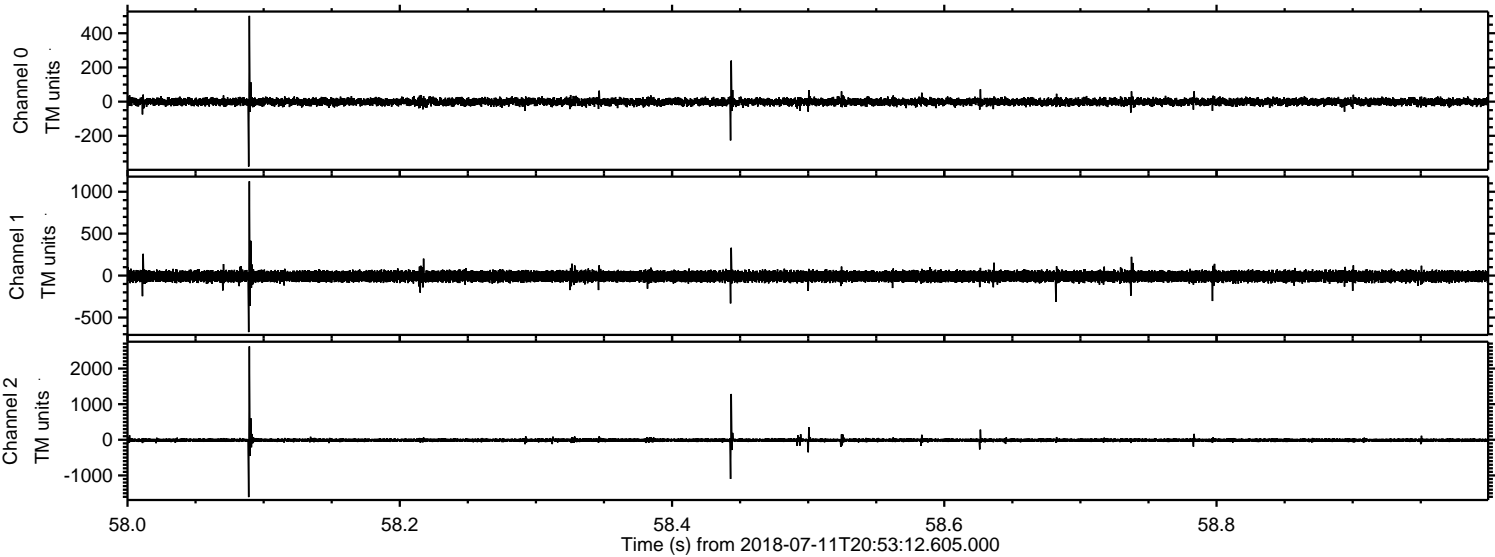


ELMAVAN 3D WAVEFORMS (Measured data sampled at 50 kHz) 50998 packets of 144 samples from 2018-07-11T20:53:12.605.000. Part 145/147

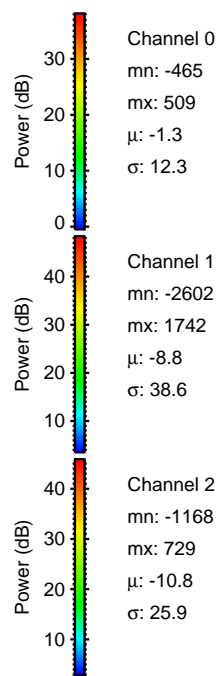
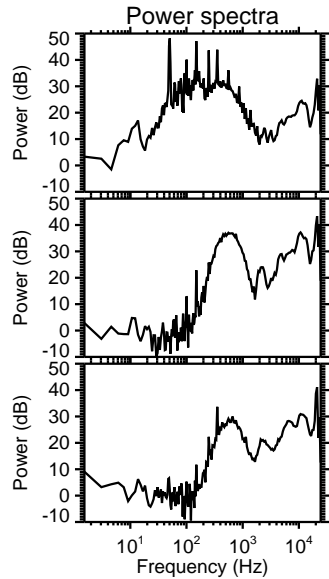
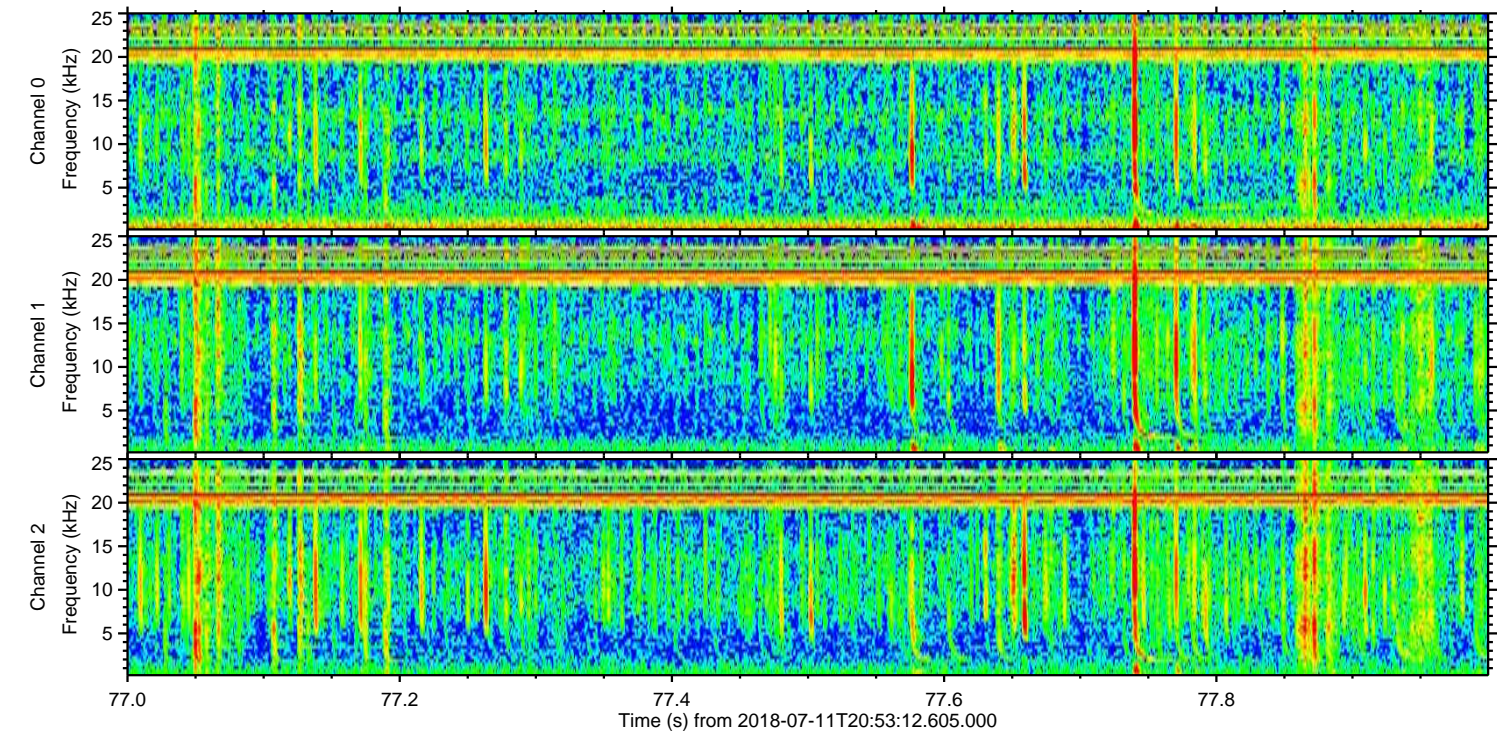
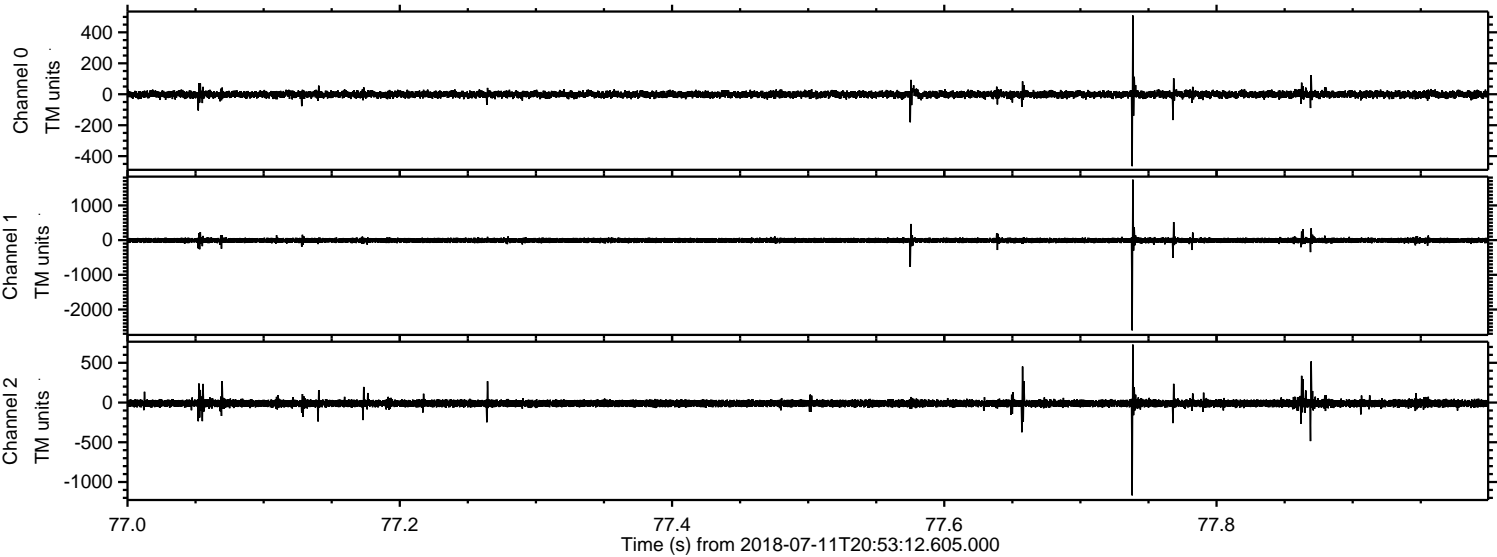
Processed Wed Jul 11 23:01:15 2018 by ELM ver.2012-10-06 from 001__elm20180711_205311__dat00.bin



Processed Wed Jul 11 23:01:15 2018 by ELM ver.2012-10-06 from 001__elm20180711_205311__dat00.bin



Processed Wed Jul 11 23:01:16 2018 by ELM ver.2012-10-06 from 001__elm20180711_205311__dat00.bin



Channel 0
mn: -465
mx: 509
 μ : -1.3
 σ : 12.3

Channel 1
mn: -2602
mx: 1742
 μ : -8.8
 σ : 38.6

Channel 2
mn: -1168
mx: 729
 μ : -10.8
 σ : 25.9

Processed Wed Jul 11 23:01:16 2018 by ELM ver.2012-10-06 from 001__elm20180711_205311__dat00.bin

