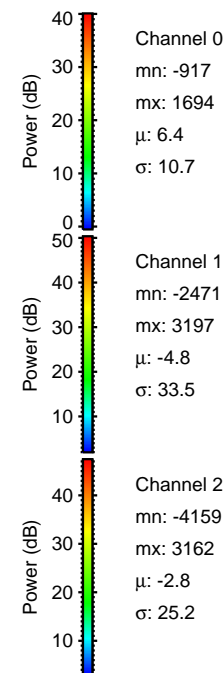
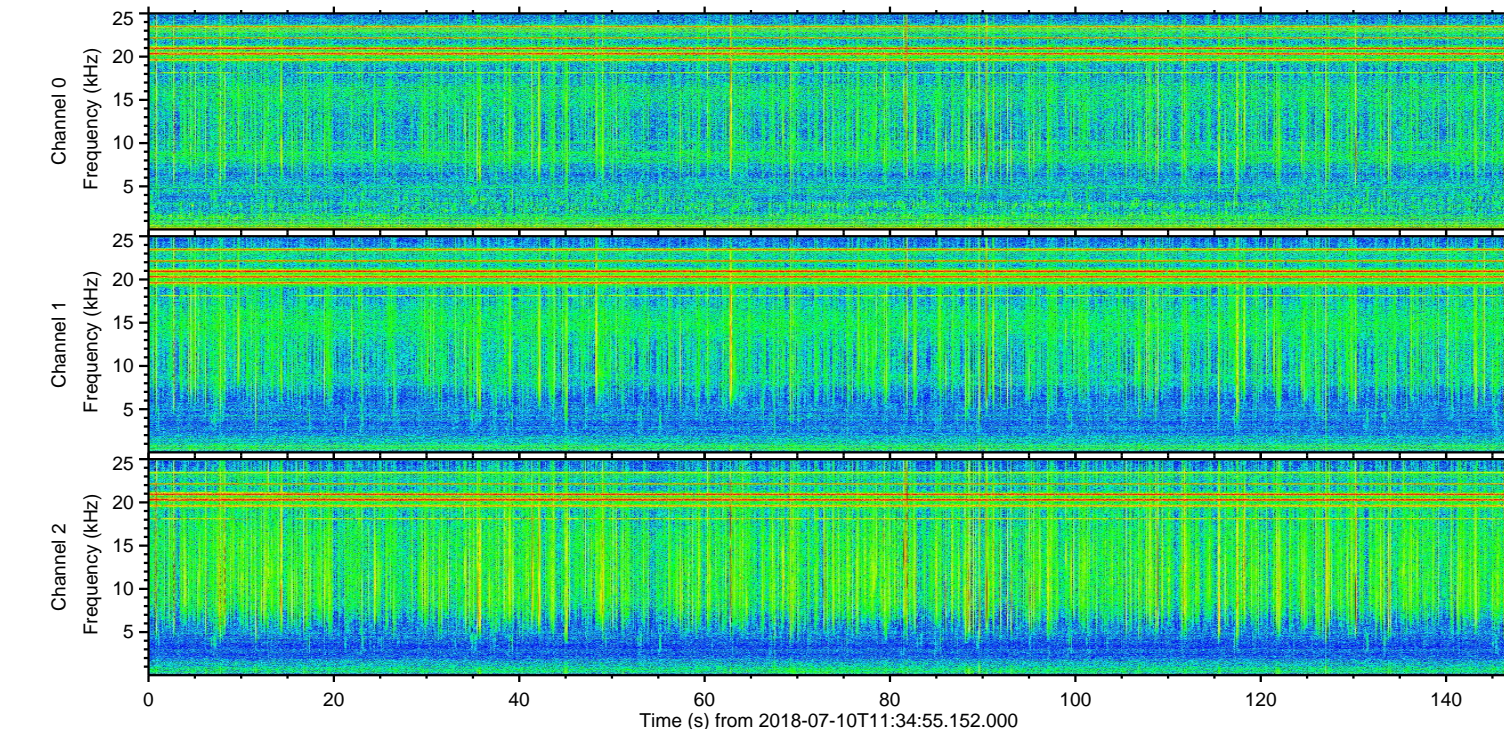
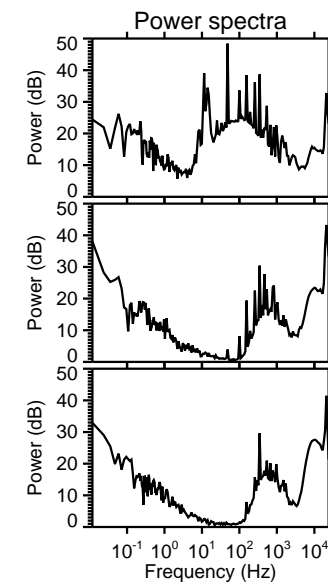
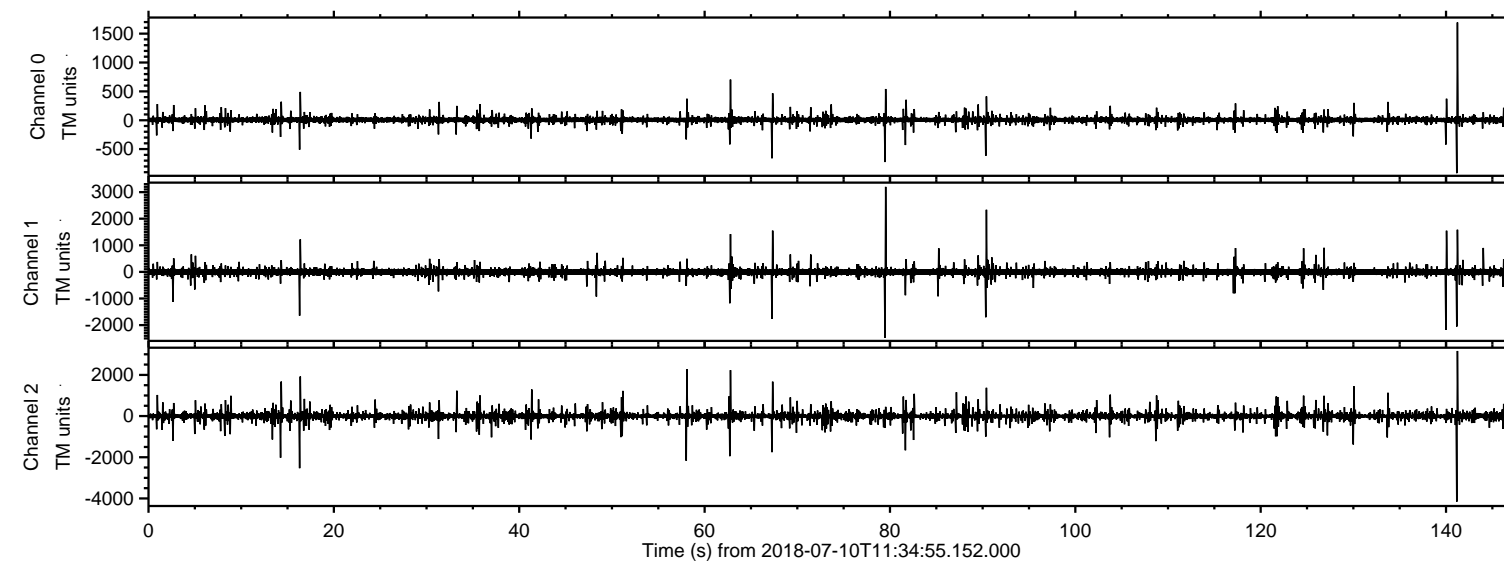


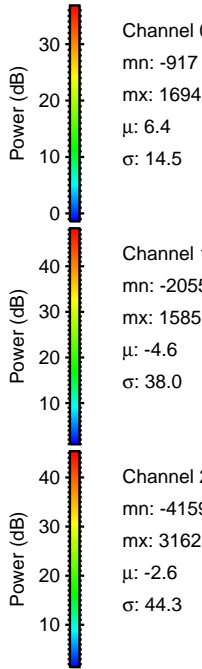
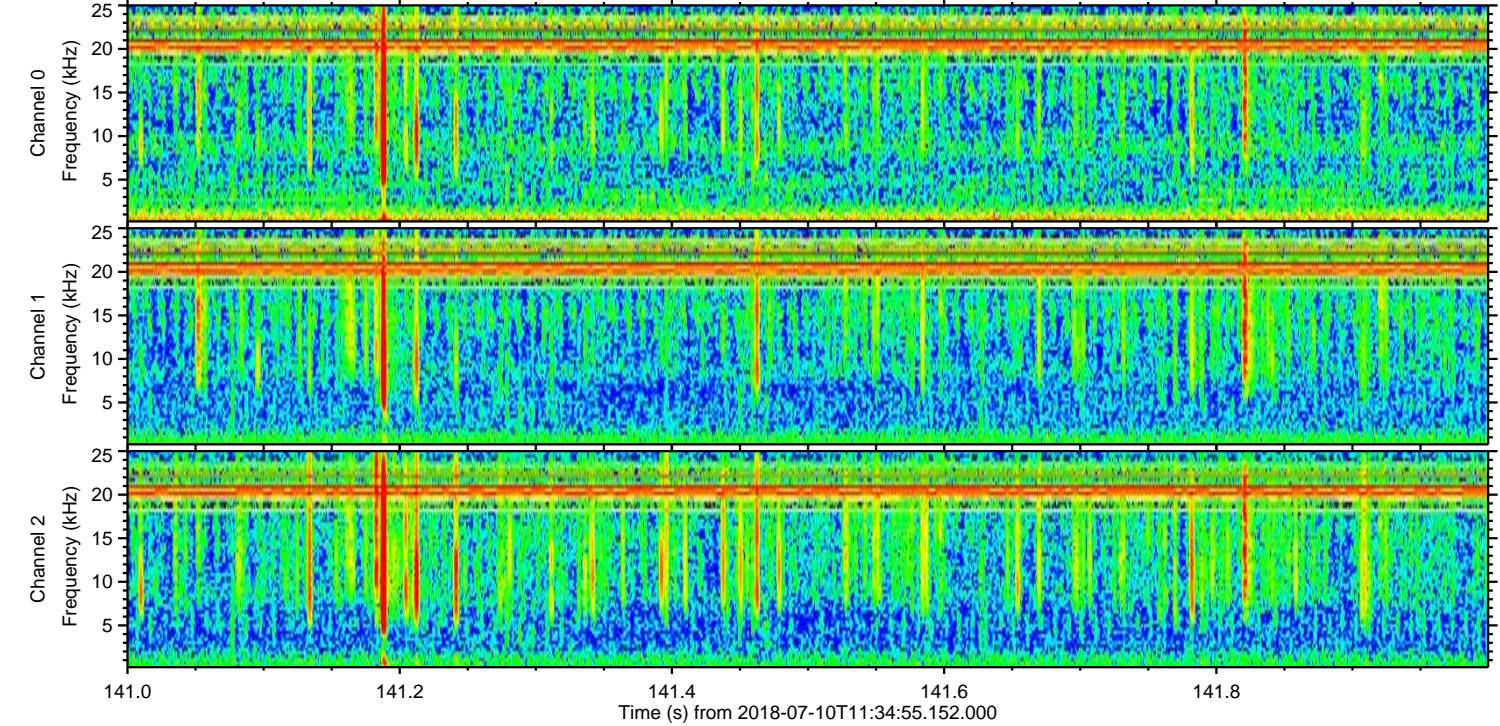
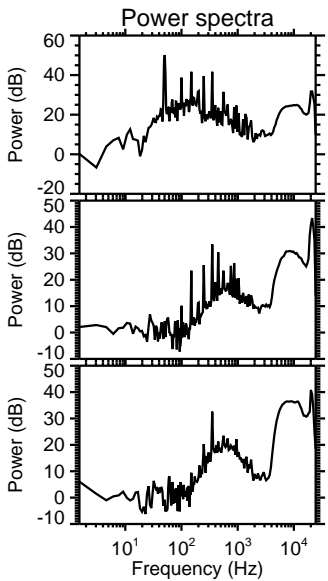
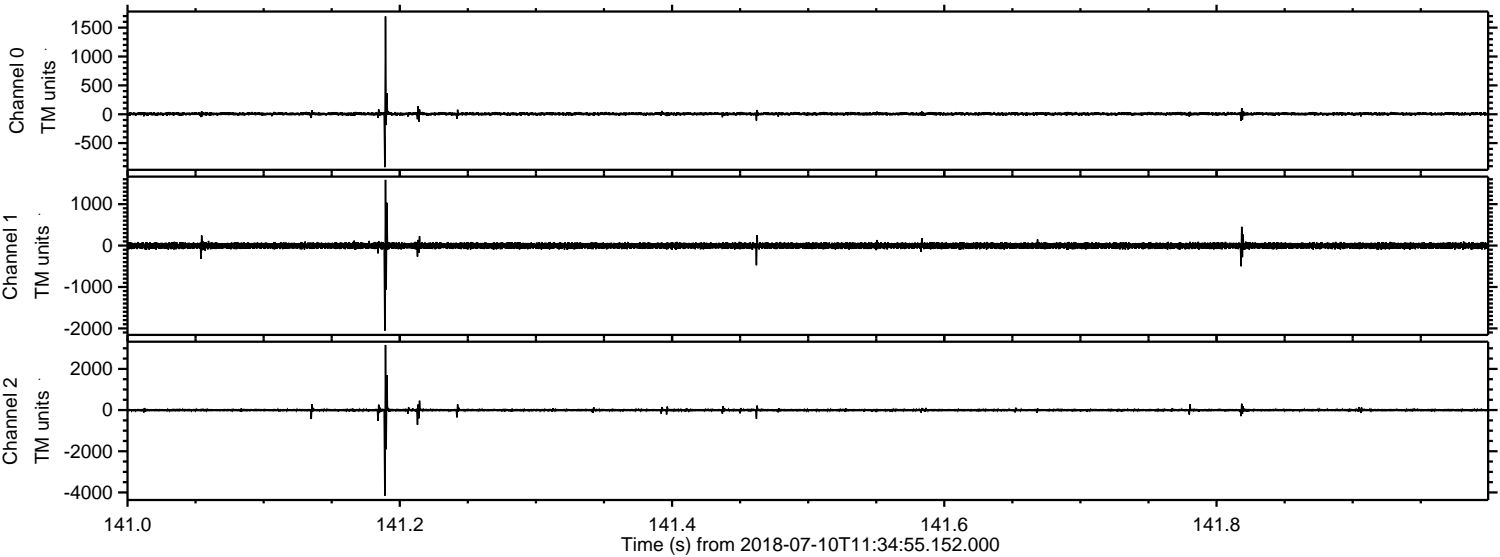
ELMAVAN 3D WAVEFORMS (Measured data sampled at 50 kHz) 51000 packets of 144 samples from 2018-07-10T11:34:55.152.000.

Processed Tue Jul 10 13:42:47 2018 by ELM ver.2012-10-06 from 001__elm20180710_113454__dat00.bin

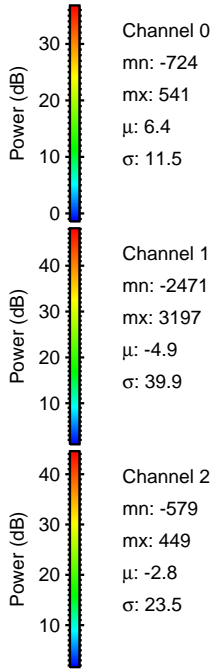
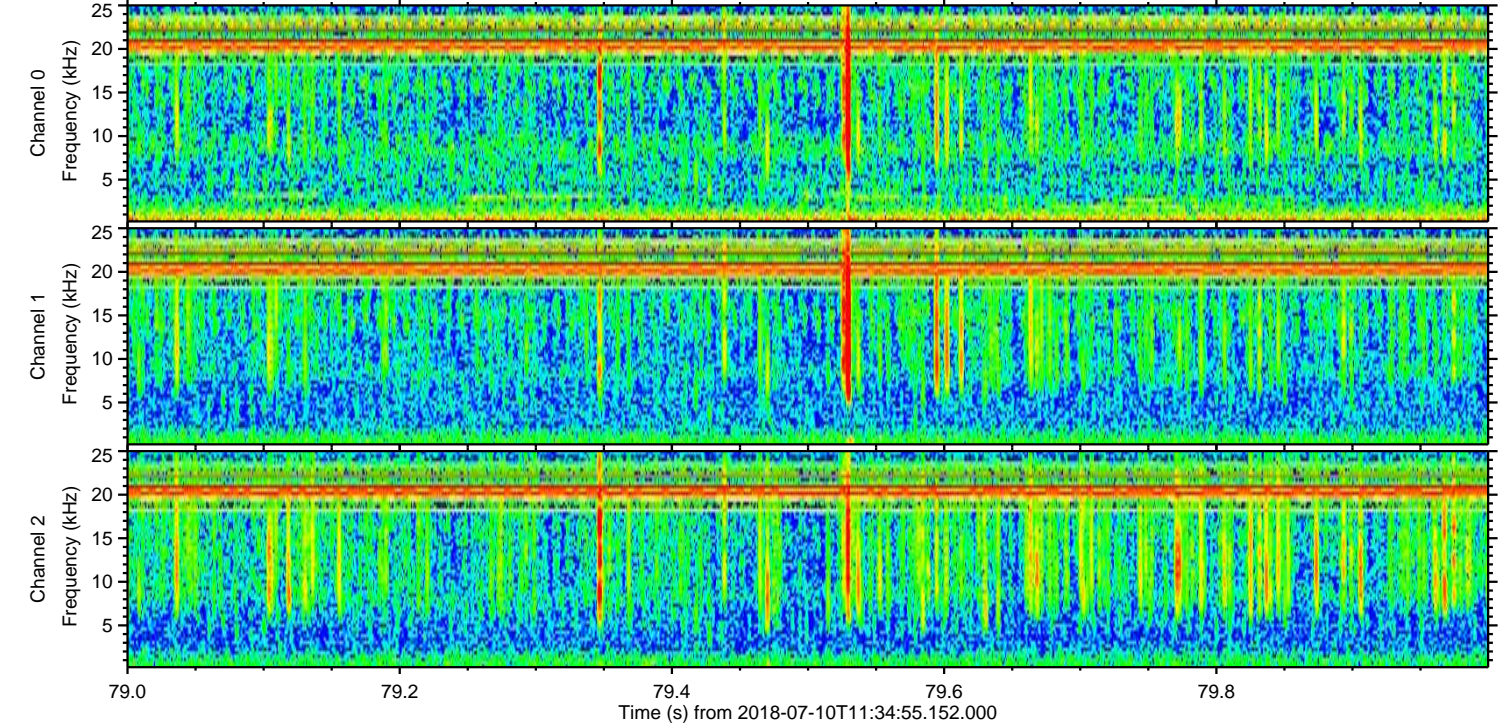
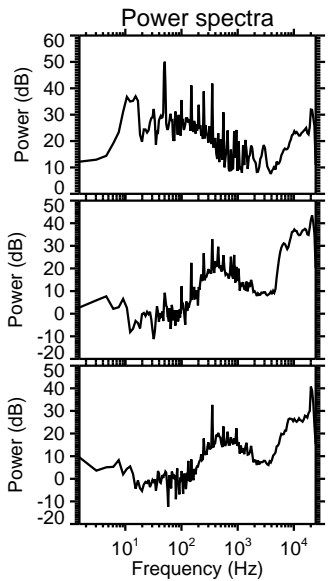
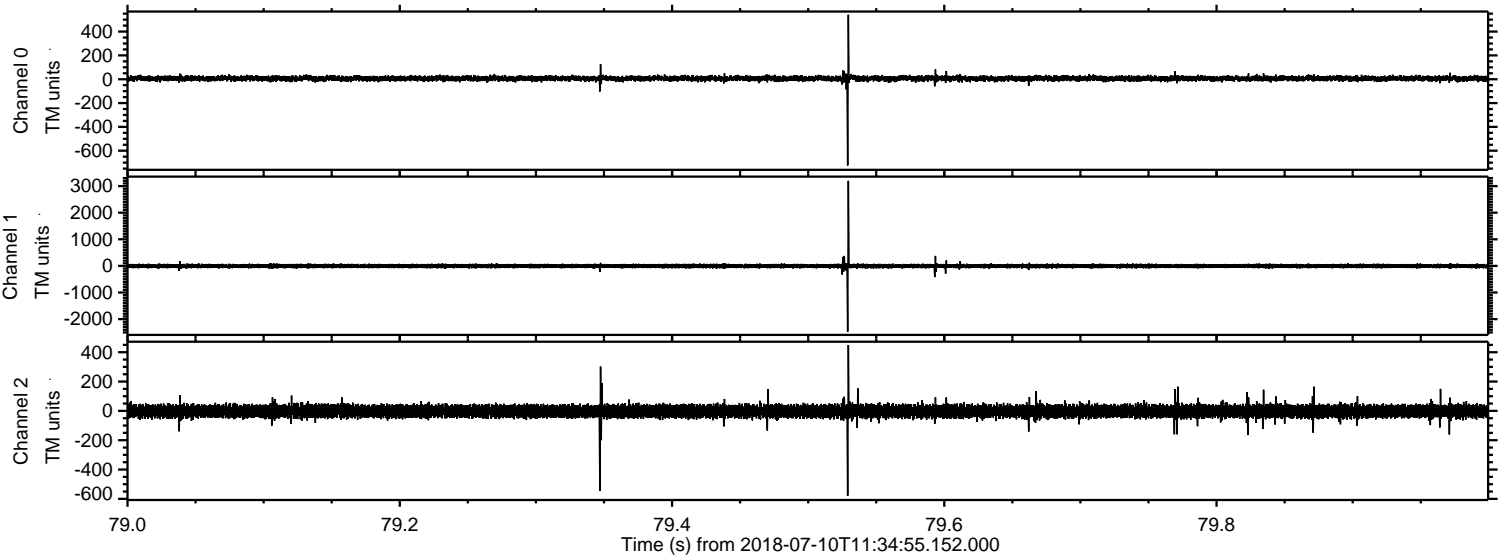


ELMAVAN 3D WAVEFORMS (Measured data sampled at 50 kHz) 51000 packets of 144 samples from 2018-07-10T11:34:55.152.000. Part 142/147

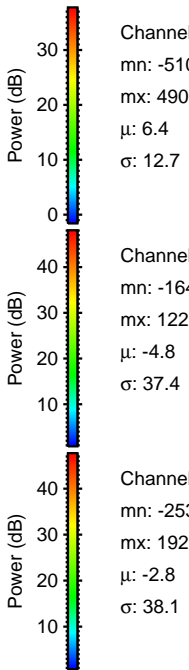
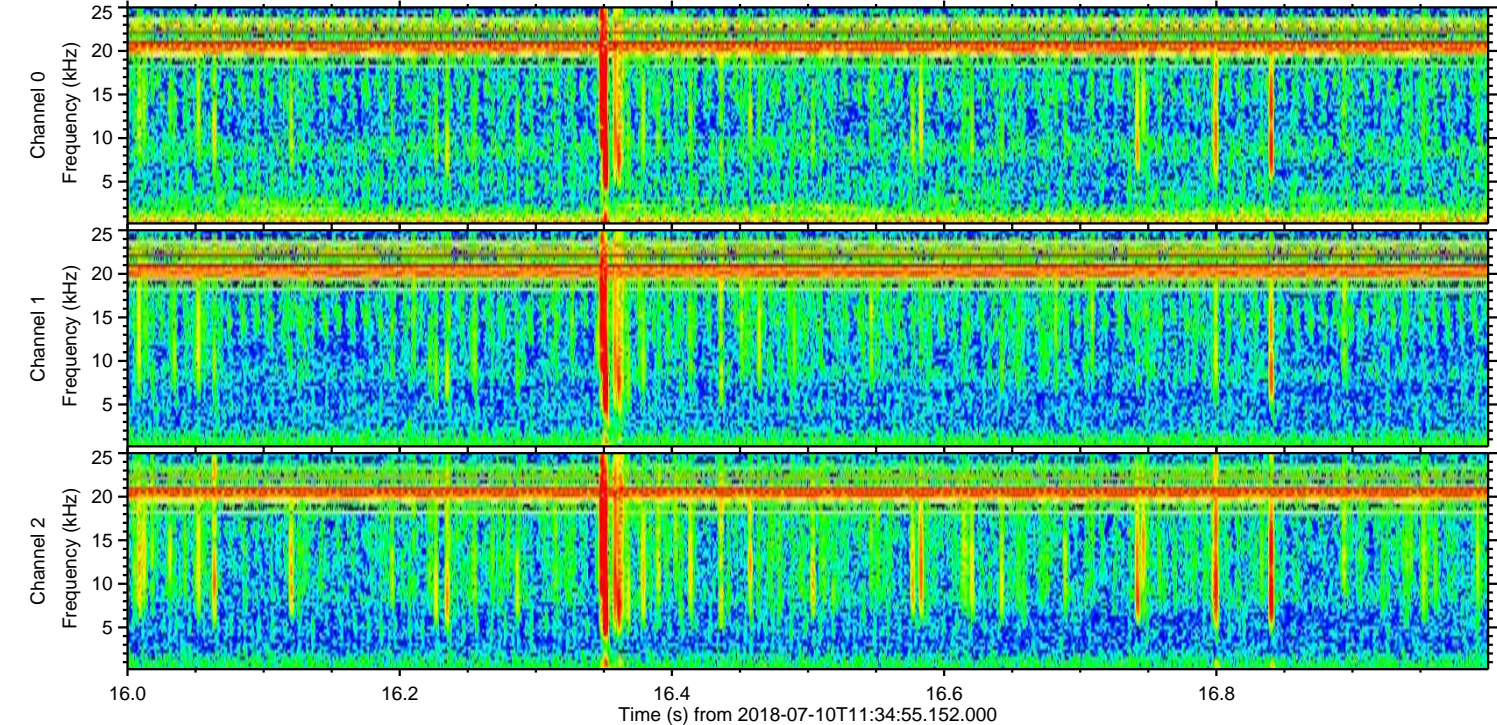
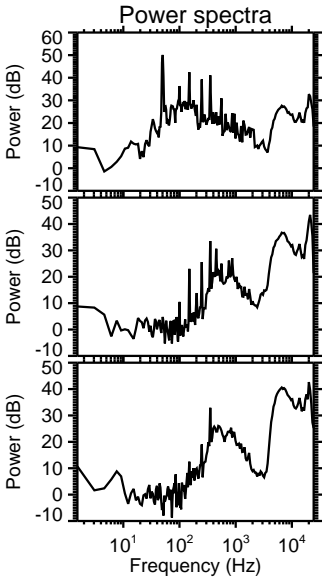
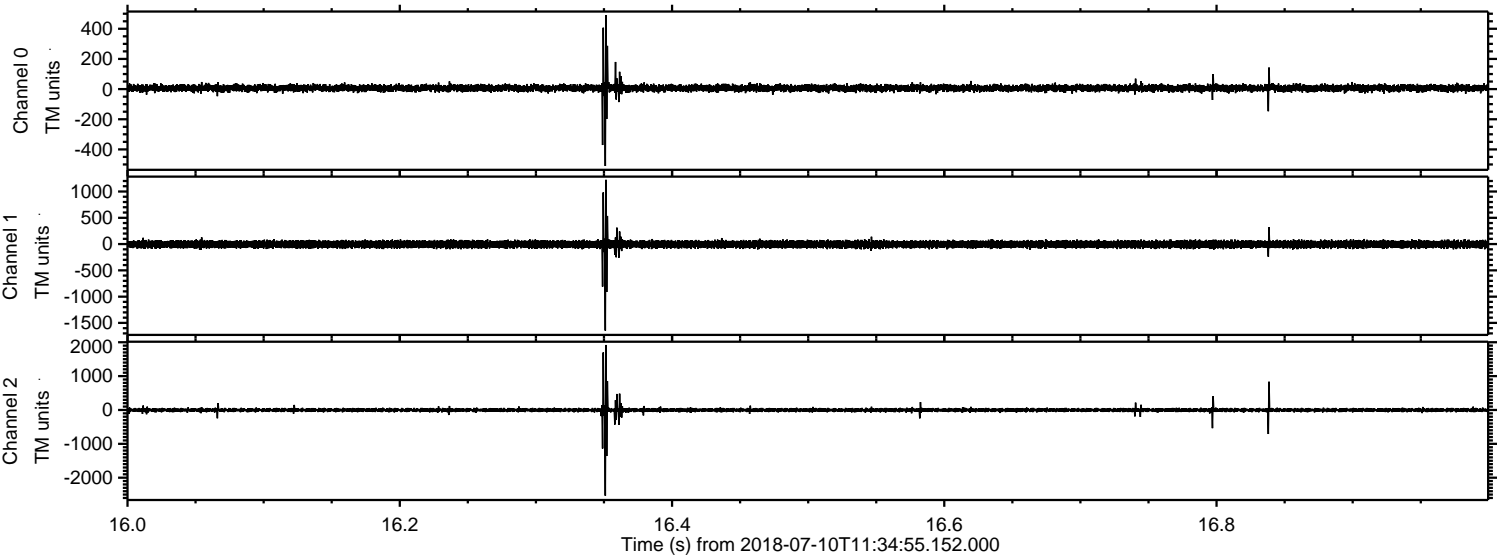
Processed Tue Jul 10 13:42:54 2018 by ELM ver.2012-10-06 from 001__elm20180710_113454__dat00.bin



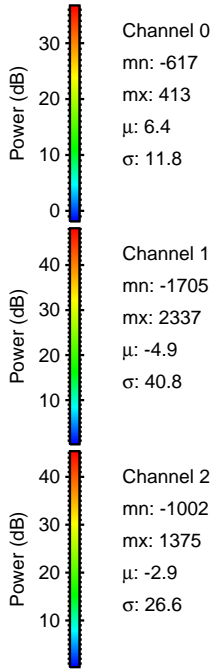
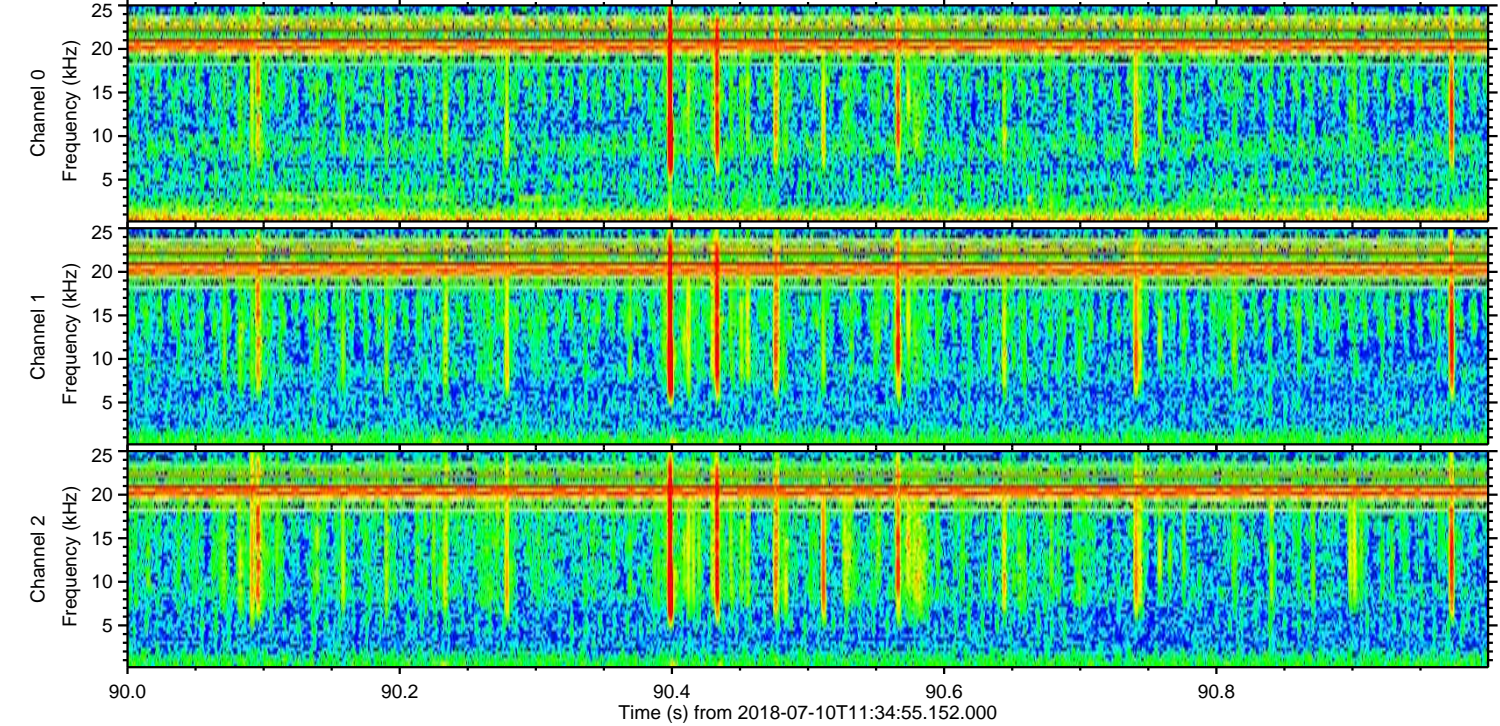
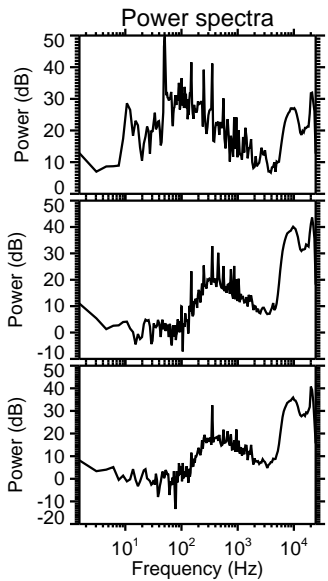
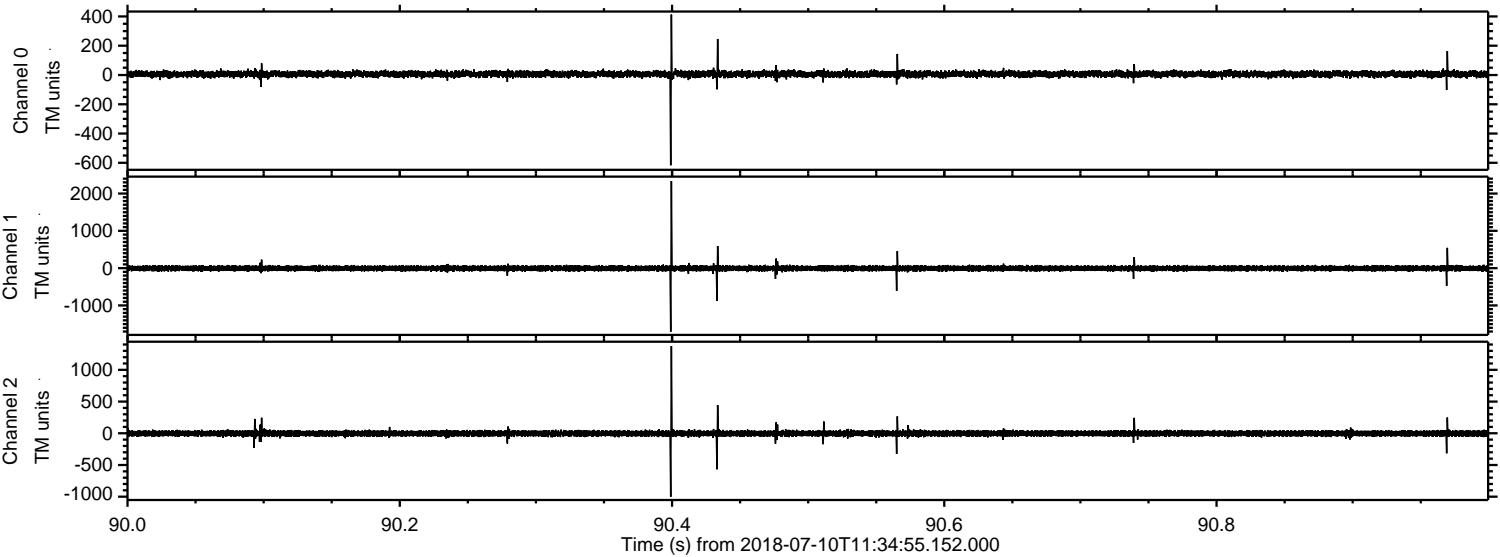
Processed Tue Jul 10 13:42:54 2018 by ELM ver.2012-10-06 from 001__elm20180710_113454__dat00.bin



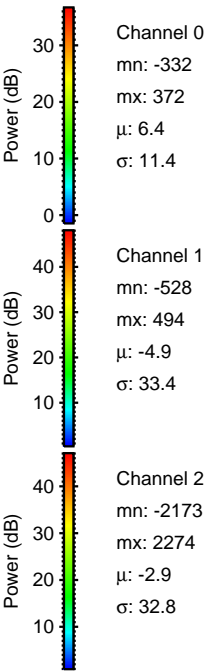
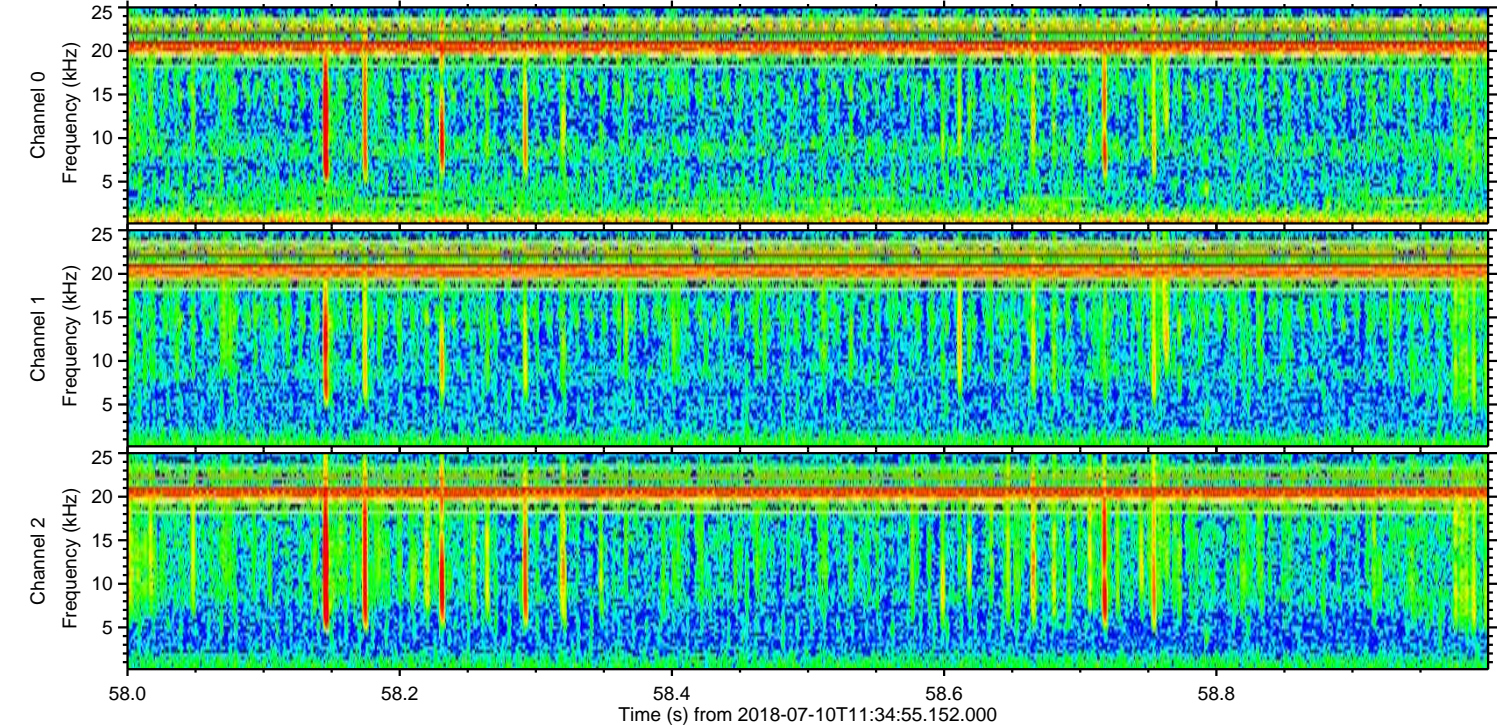
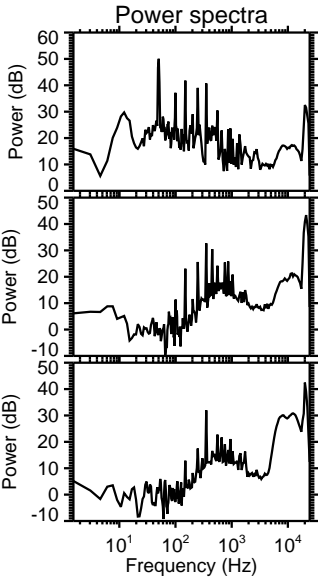
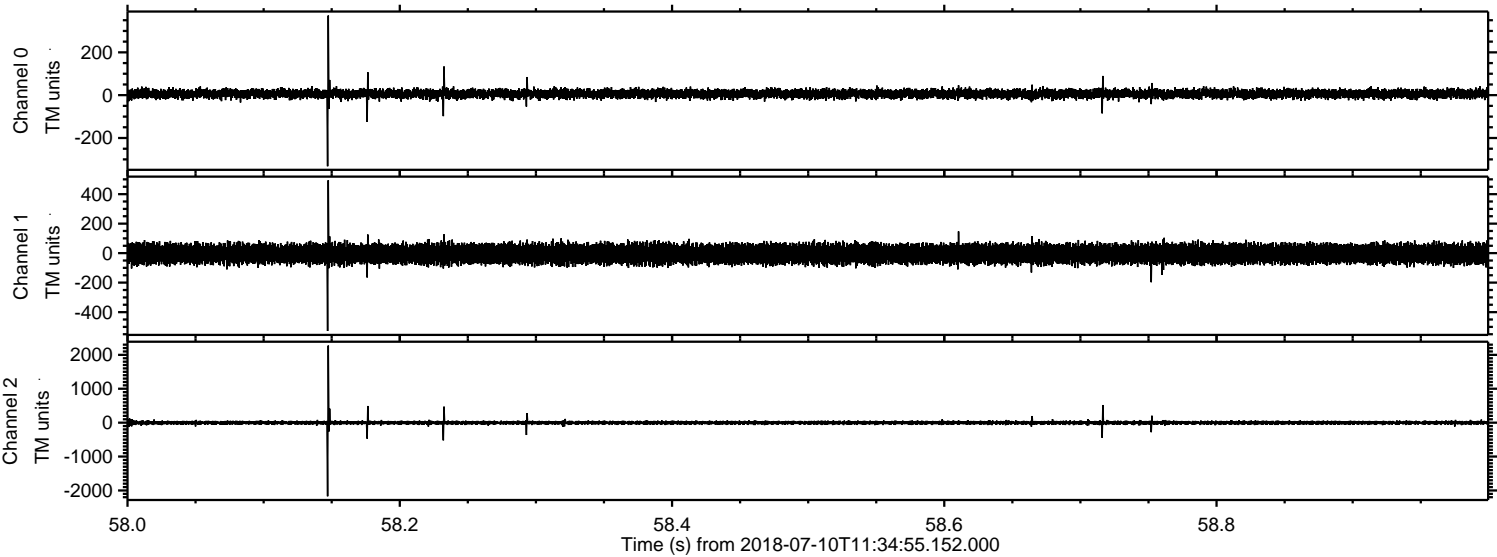
Processed Tue Jul 10 13:42:55 2018 by ELM ver.2012-10-06 from 001__elm20180710_113454__dat00.bin



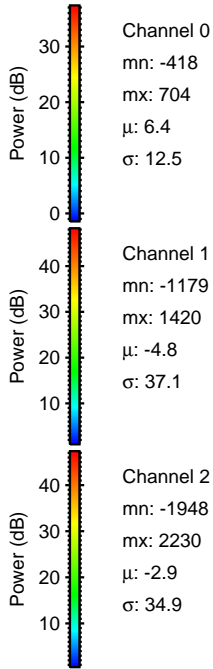
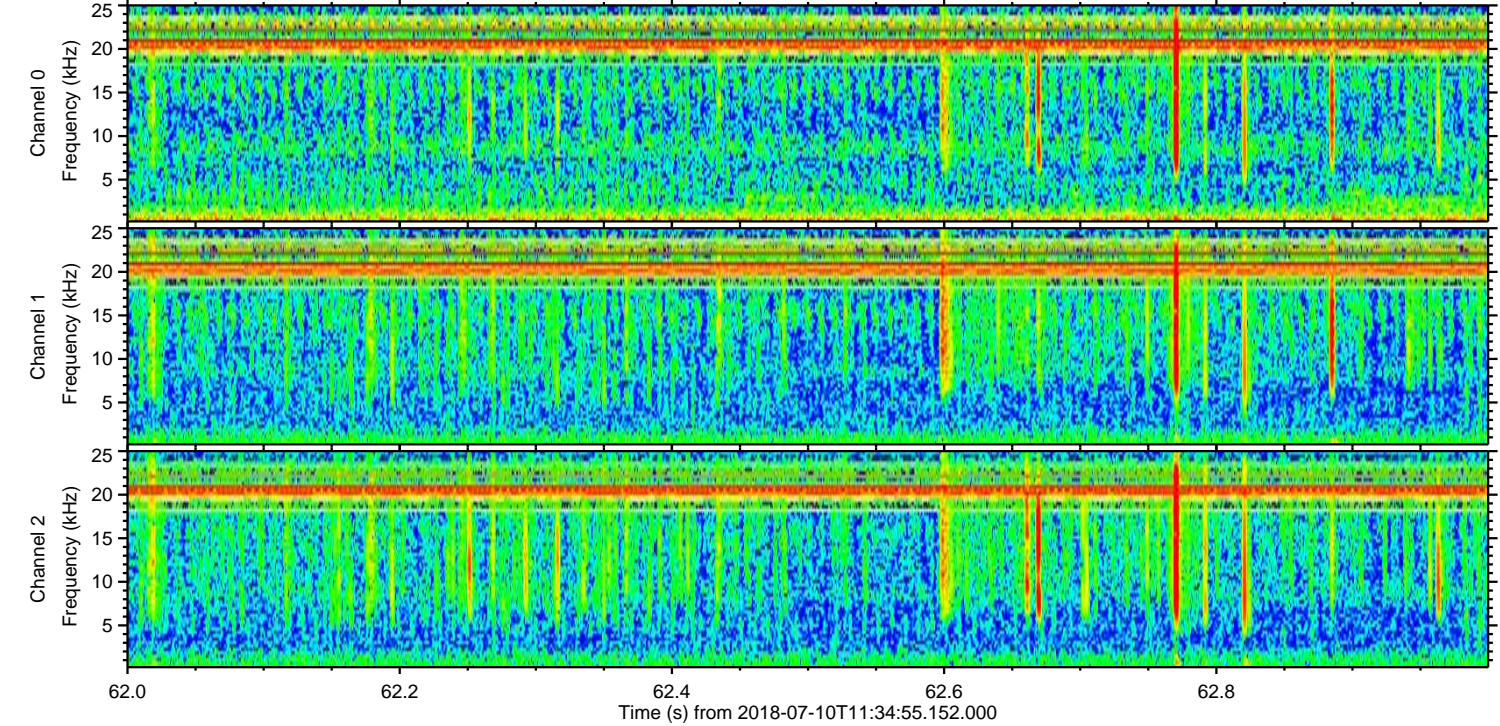
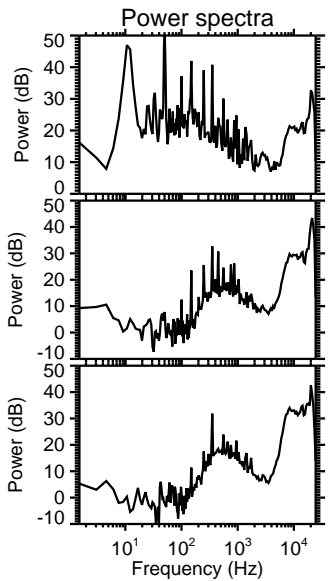
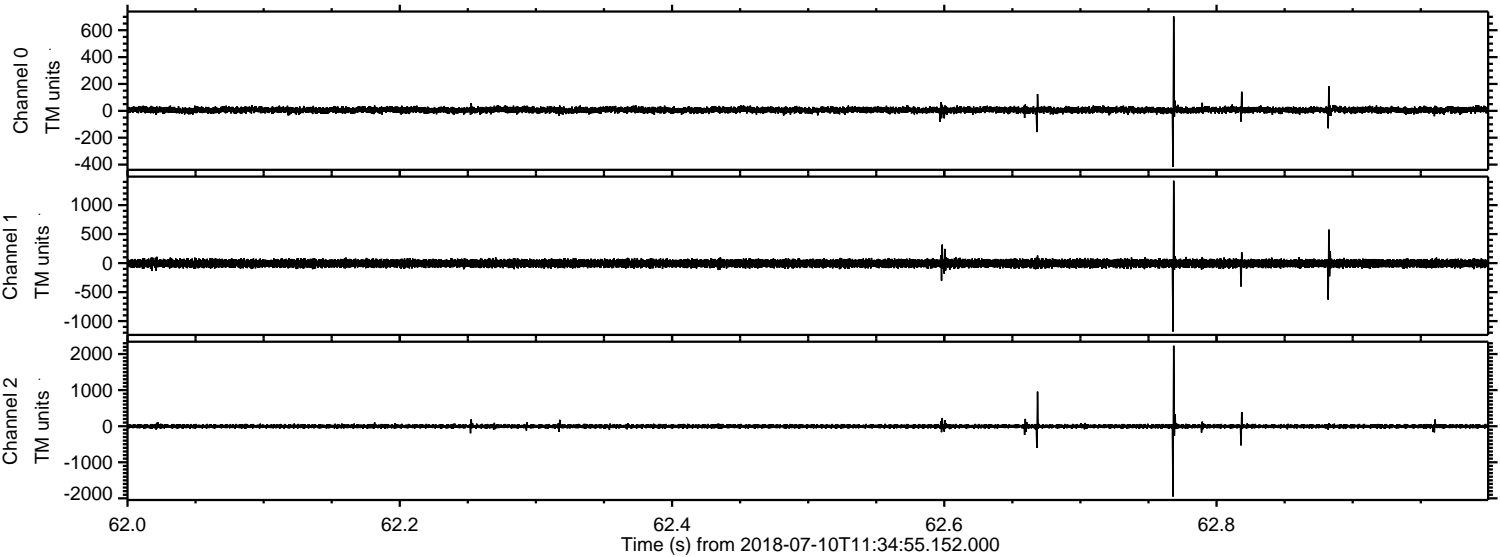
Processed Tue Jul 10 13:42:56 2018 by ELM ver.2012-10-06 from 001__elm20180710_113454__dat00.bin



Processed Tue Jul 10 13:42:56 2018 by ELM ver.2012-10-06 from 001__elm20180710_113454__dat00.bin

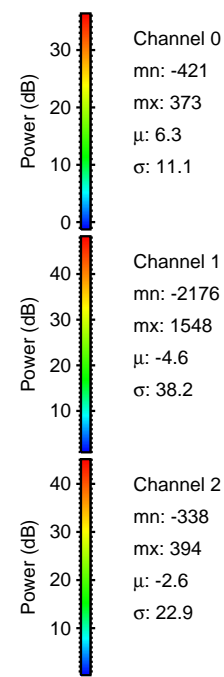
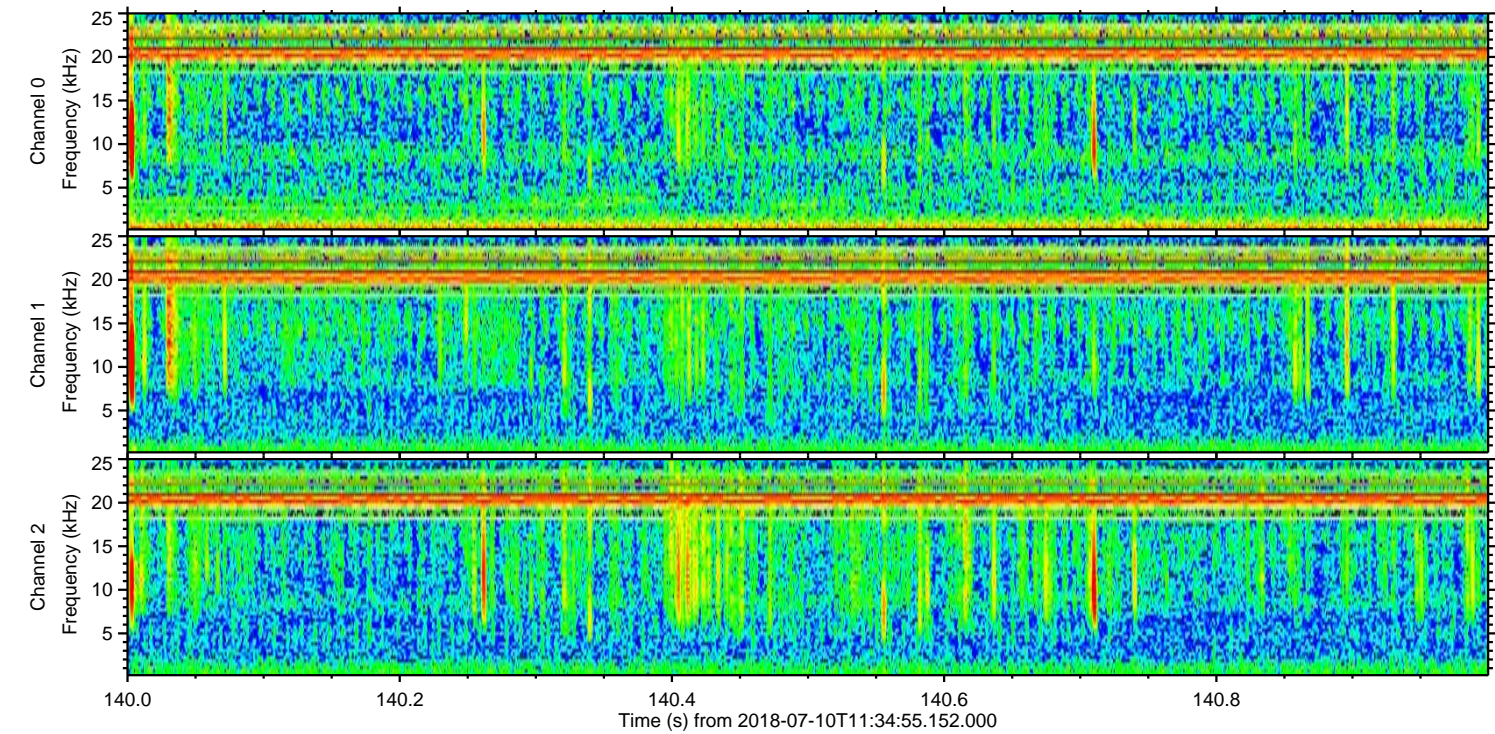
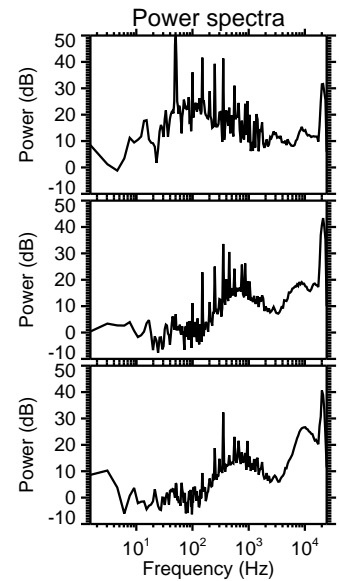
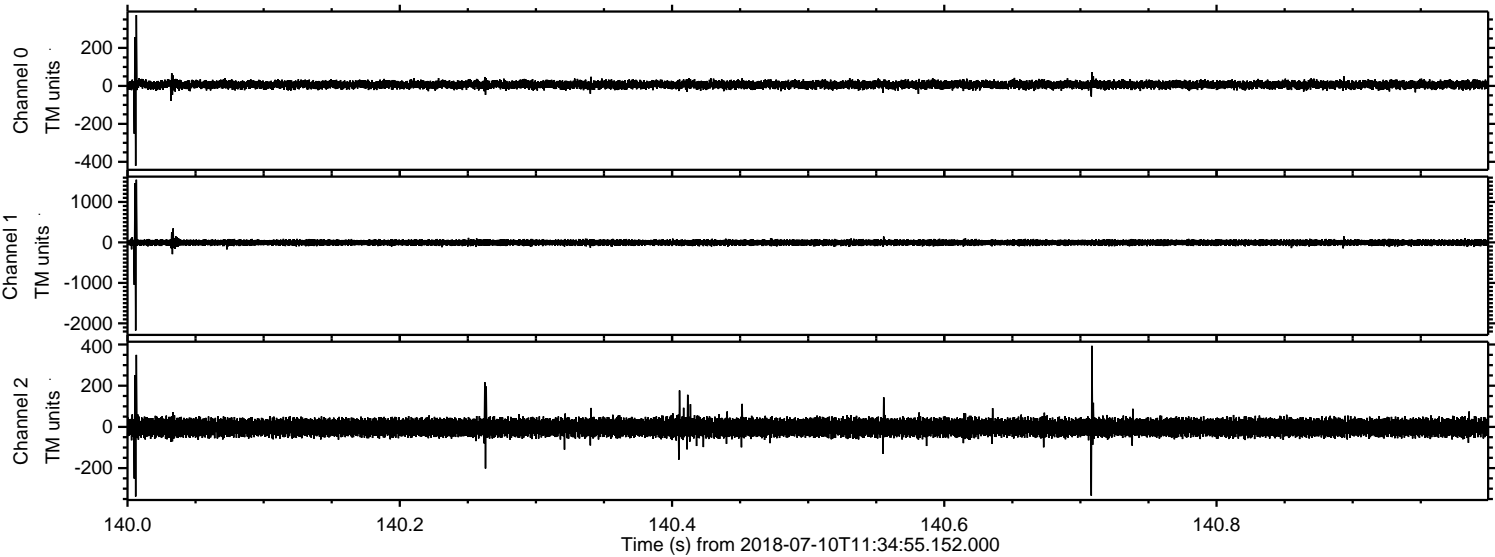


Processed Tue Jul 10 13:42:57 2018 by ELM ver.2012-10-06 from 001__elm20180710_113454__dat00.bin

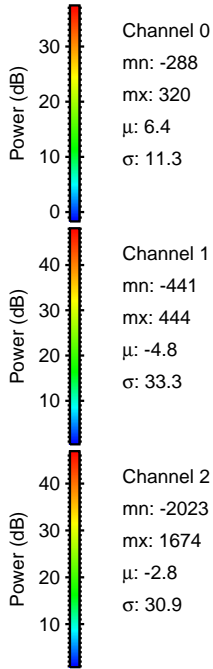
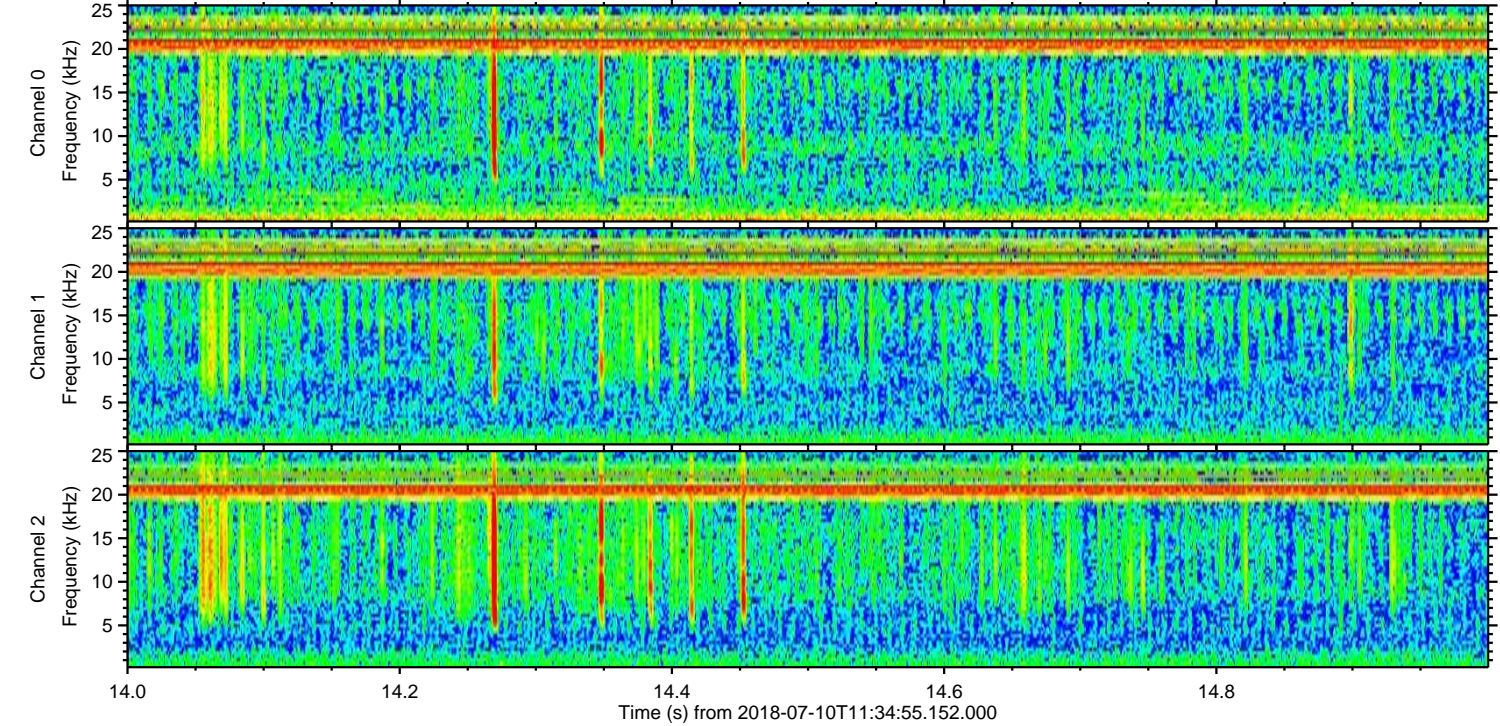
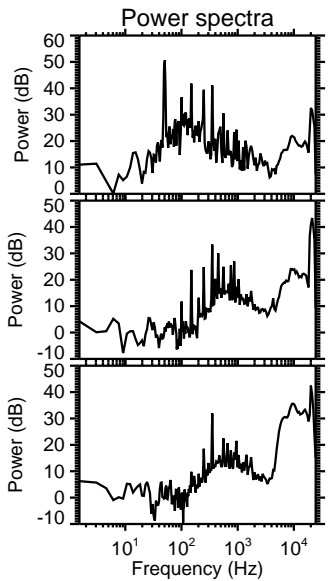
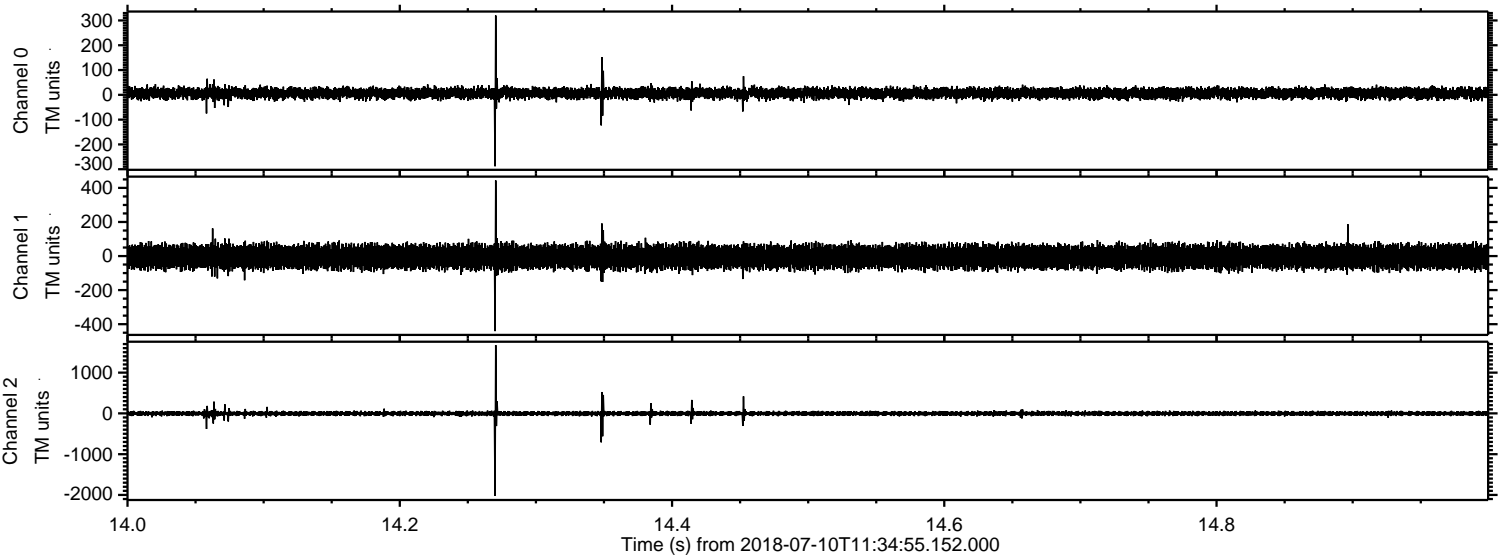


ELMAVAN 3D WAVEFORMS (Measured data sampled at 50 kHz) 51000 packets of 144 samples from 2018-07-10T11:34:55.152.000. Part 141/147

Processed Tue Jul 10 13:42:57 2018 by ELM ver.2012-10-06 from 001__elm20180710_113454__dat00.bin



Processed Tue Jul 10 13:42:58 2018 by ELM ver.2012-10-06 from 001__elm20180710_113454__dat00.bin

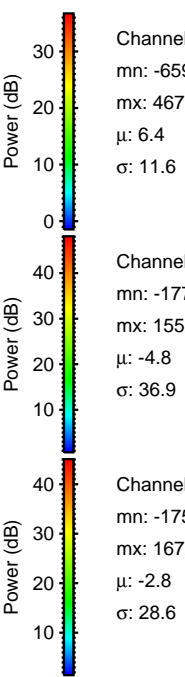
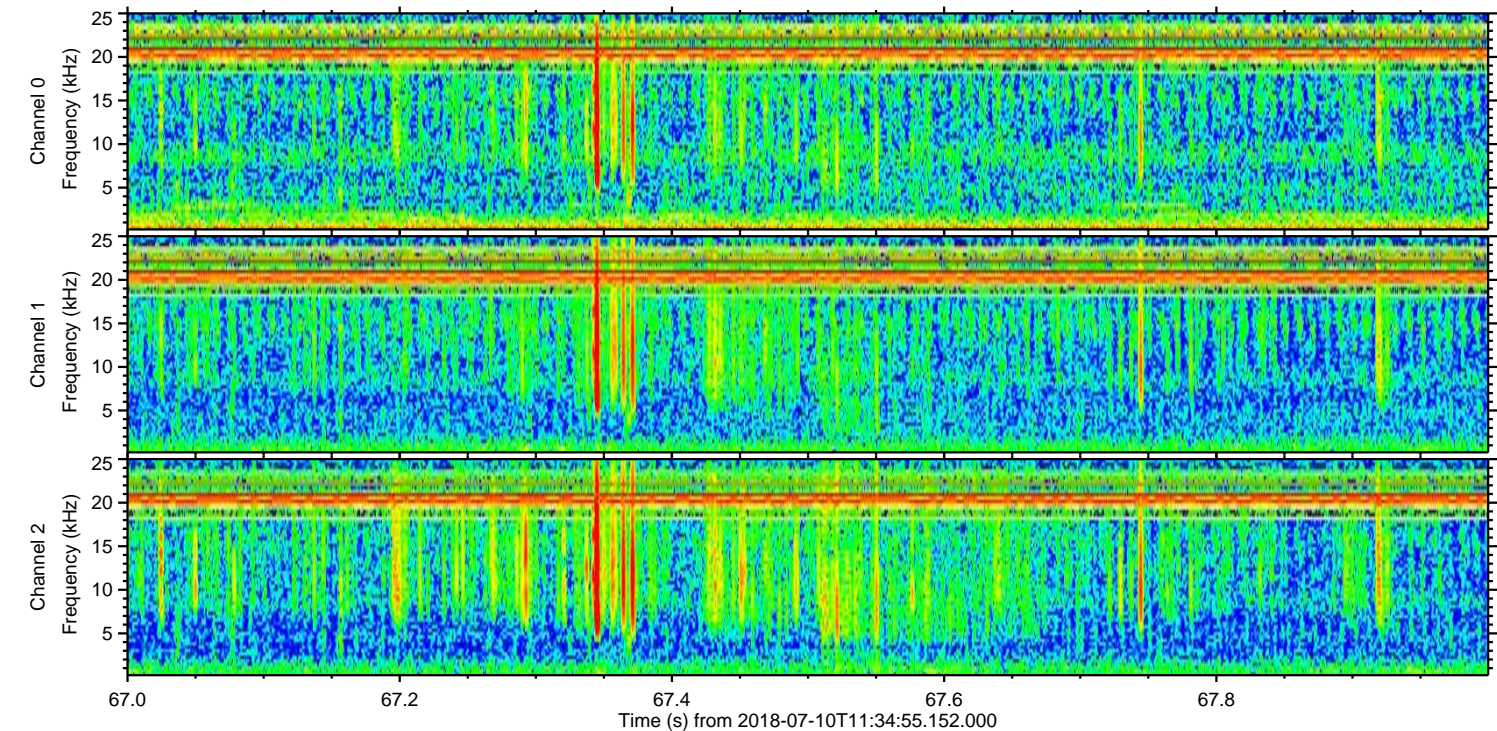
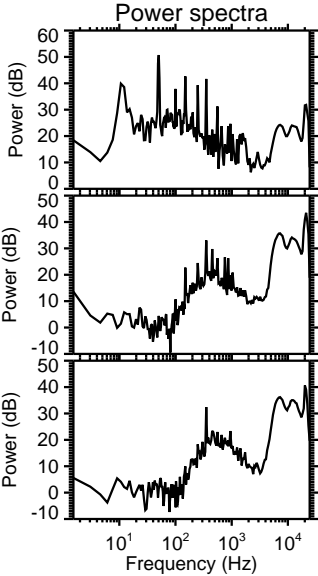
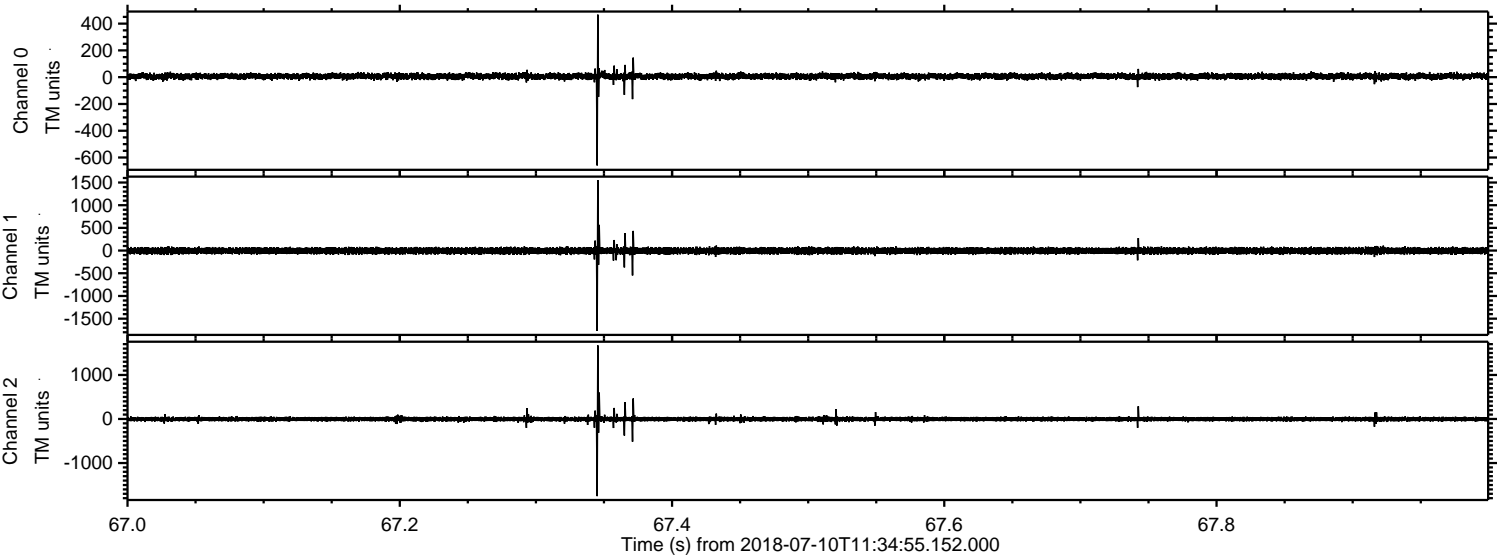


Channel 0
mn: -288
mx: 320
 μ : 6.4
 σ : 11.3

Channel 1
mn: -441
mx: 444
 μ : -4.8
 σ : 33.3

Channel 2
mn: -2023
mx: 1674
 μ : -2.8
 σ : 30.9

Processed Tue Jul 10 13:42:59 2018 by ELM ver.2012-10-06 from 001__elm20180710_113454__dat00.bin



Channel 0
mn: -659
mx: 467
 μ : 6.4
 σ : 11.6

Channel 1
mn: -1770
mx: 1552
 μ : -4.8
 σ : 36.9

Channel 2
mn: -1753
mx: 1672
 μ : -2.8
 σ : 28.6

Processed Tue Jul 10 13:42:59 2018 by ELM ver.2012-10-06 from 001__elm20180710_113454__dat00.bin

