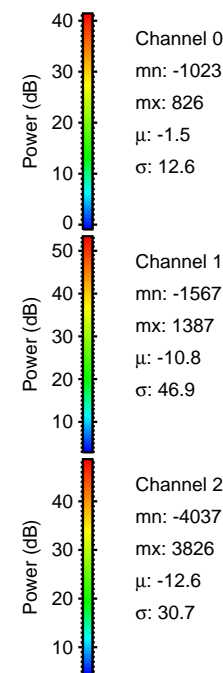
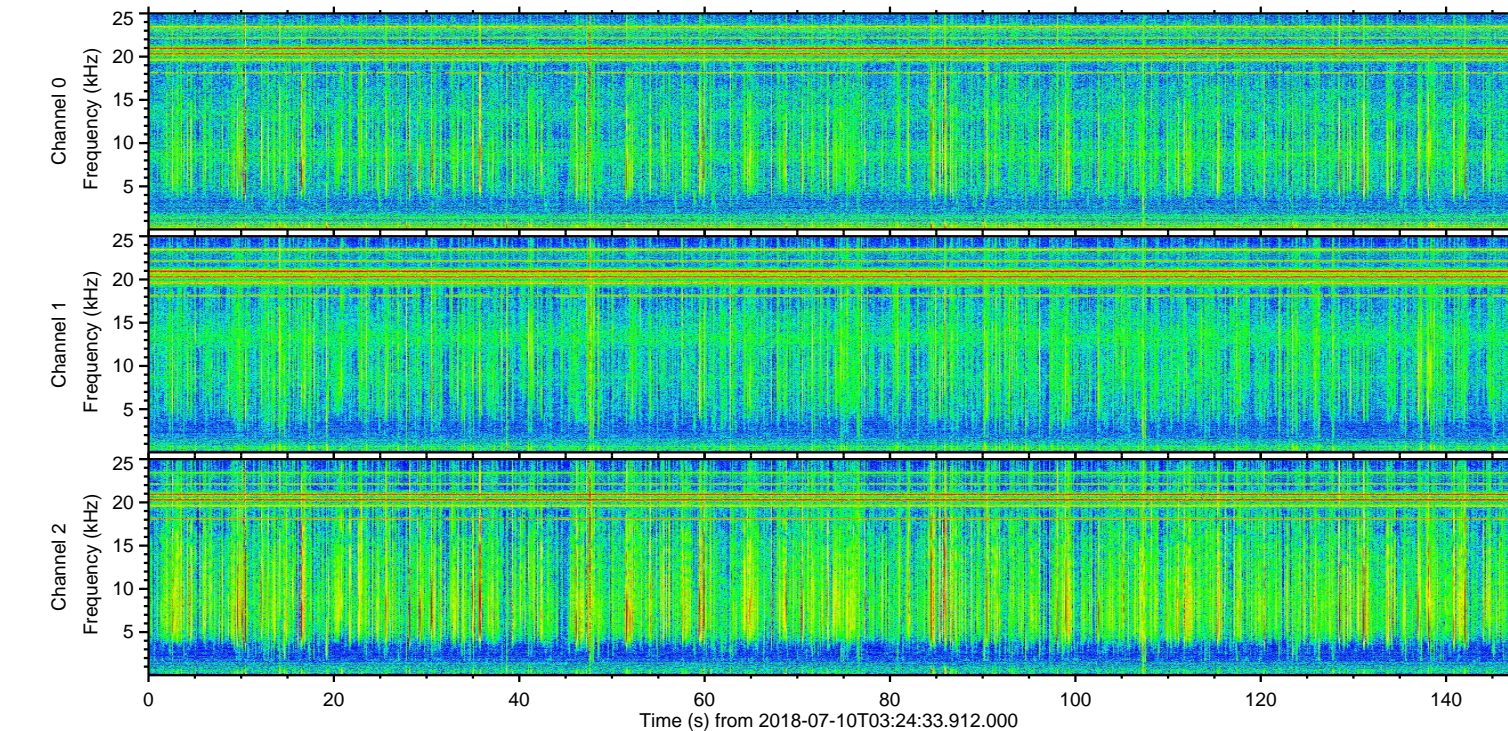
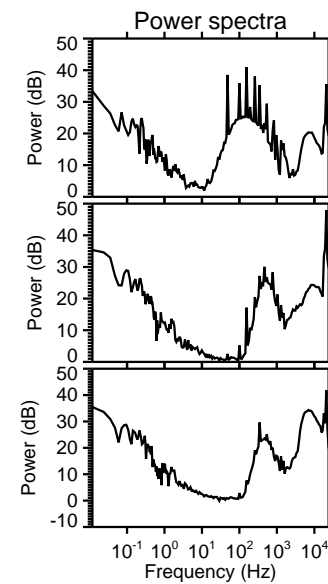
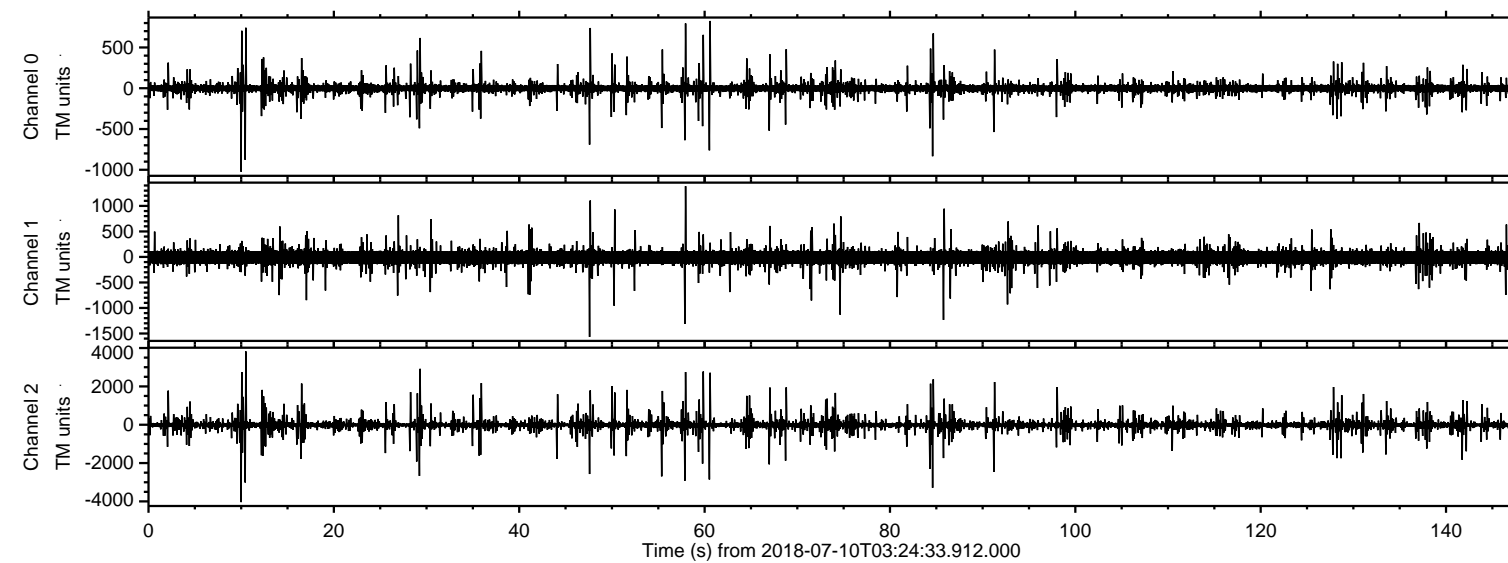


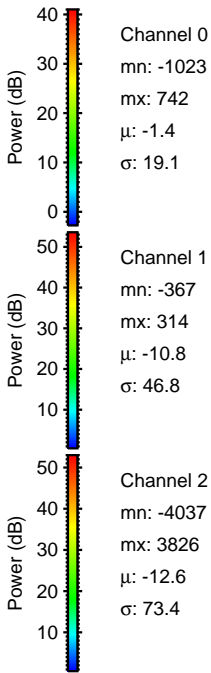
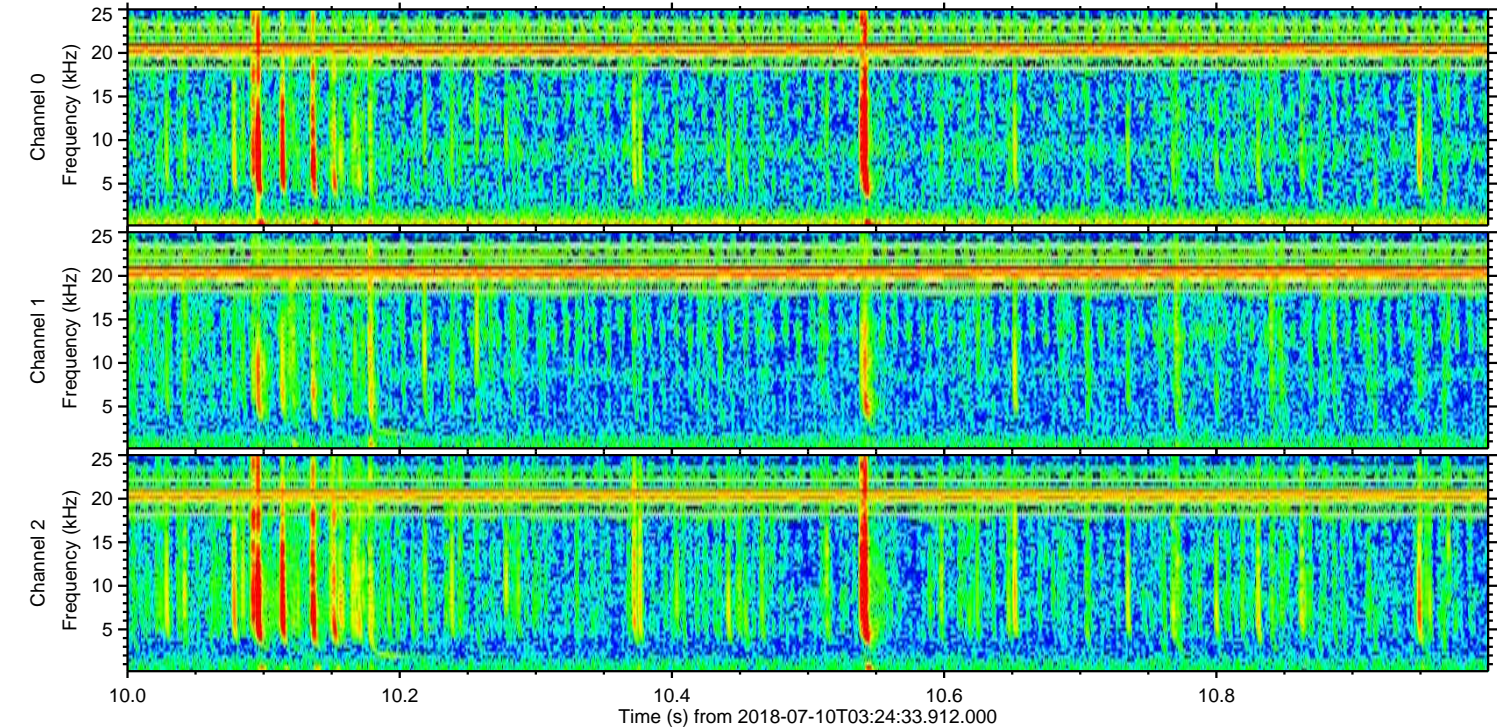
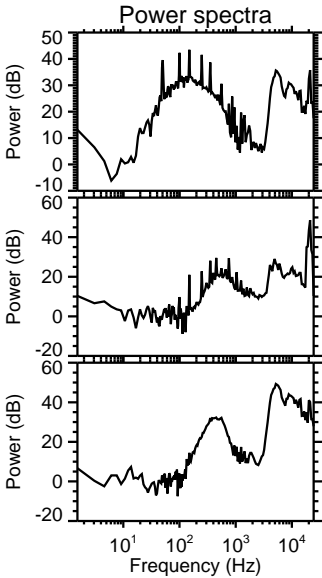
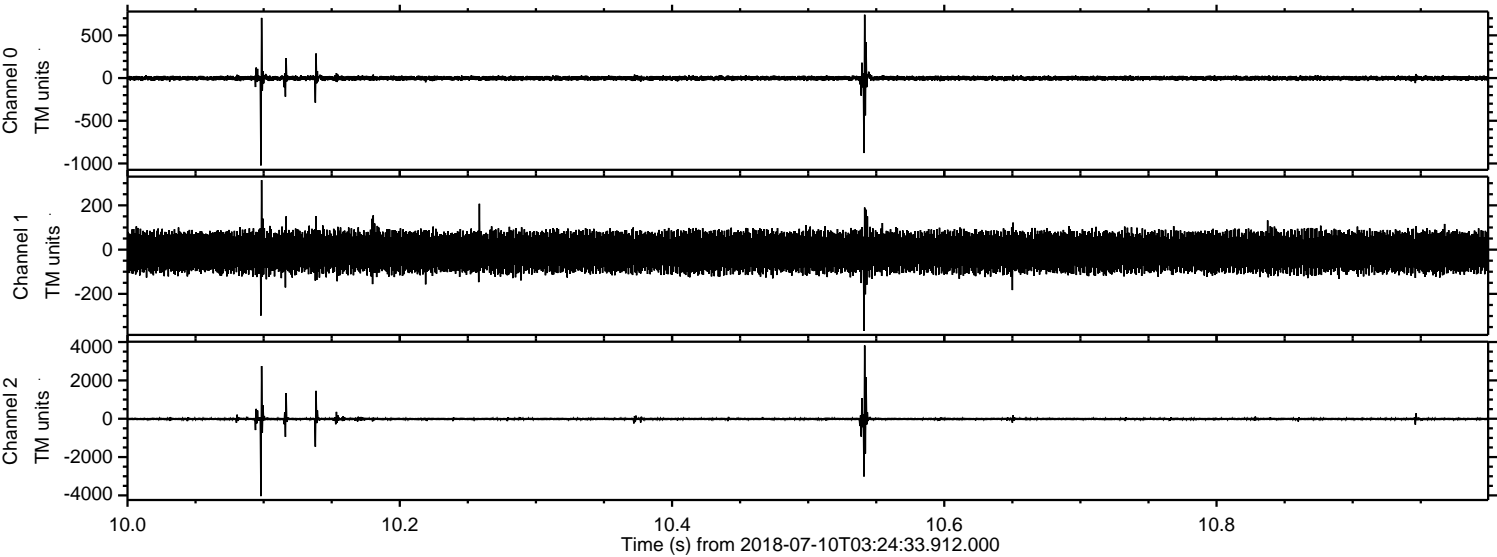
ELMAVAN 3D WAVEFORMS (Measured data sampled at 50 kHz) 51000 packets of 144 samples from 2018-07-10T03:24:33.912.000.

Processed Tue Jul 10 05:32:44 2018 by ELM ver.2012-10-06 from 001__elm20180710_032432__dat00.bin

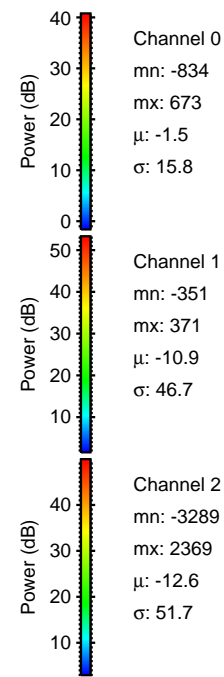
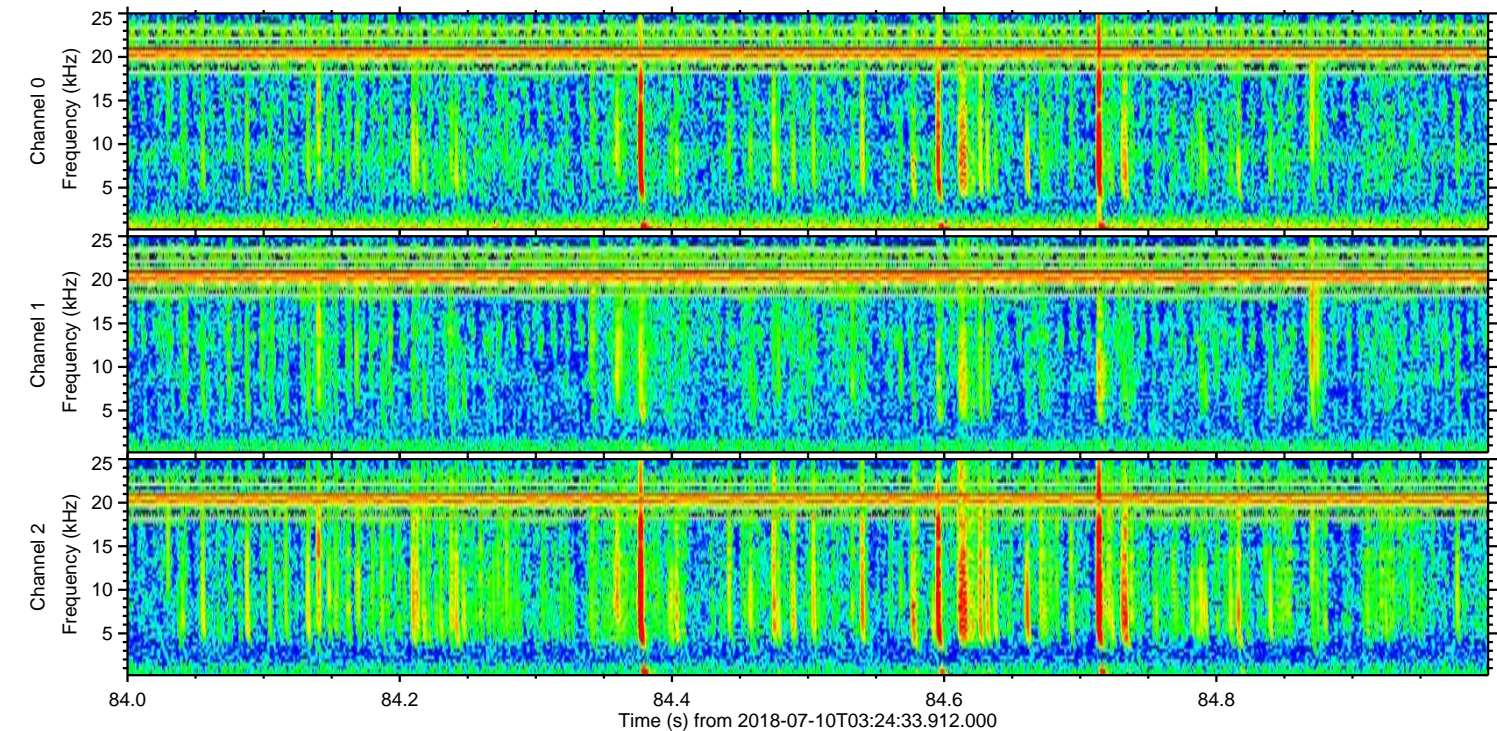
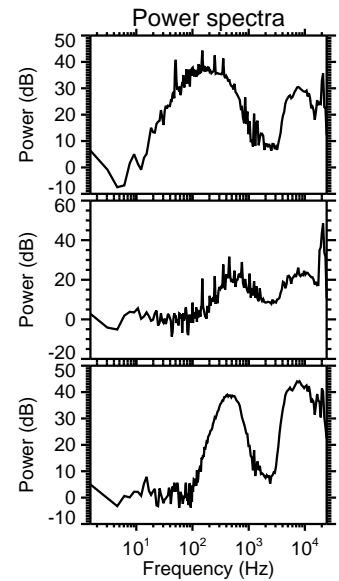
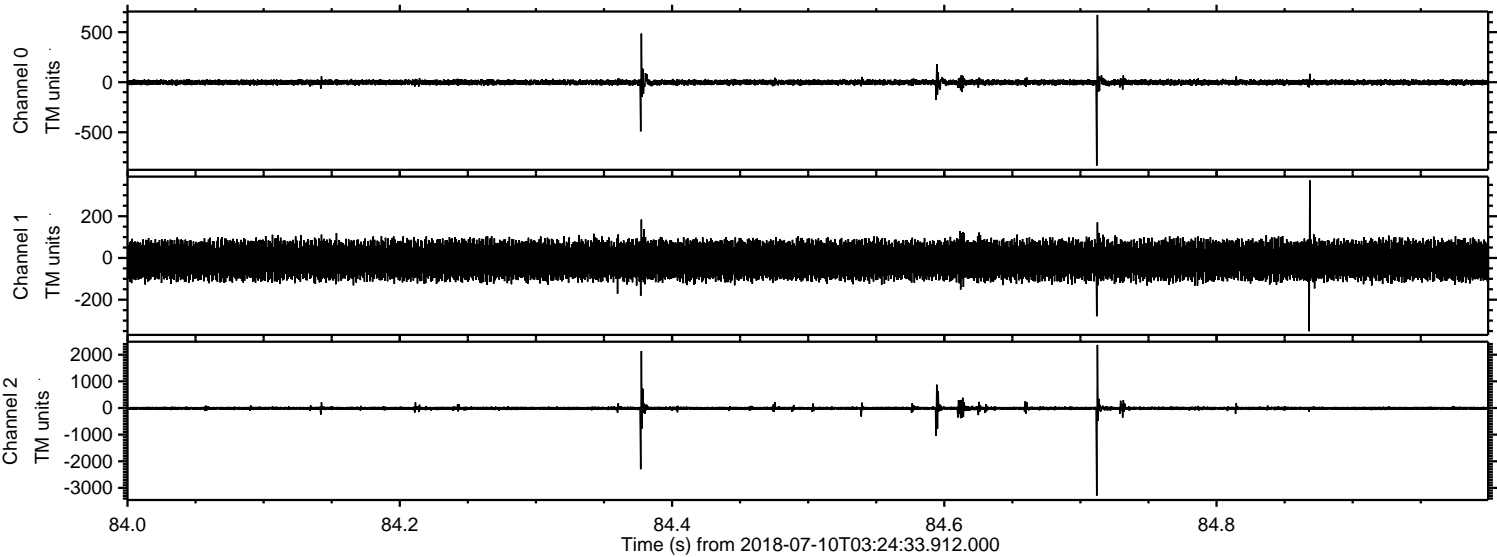


ELMAVAN 3D WAVEFORMS (Measured data sampled at 50 kHz) 51000 packets of 144 samples from 2018-07-10T03:24:33.912.000. Part 11/147

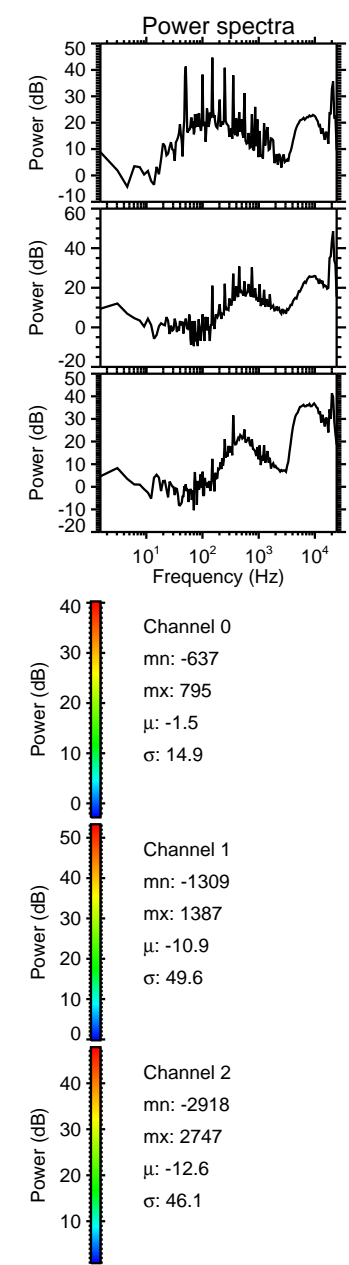
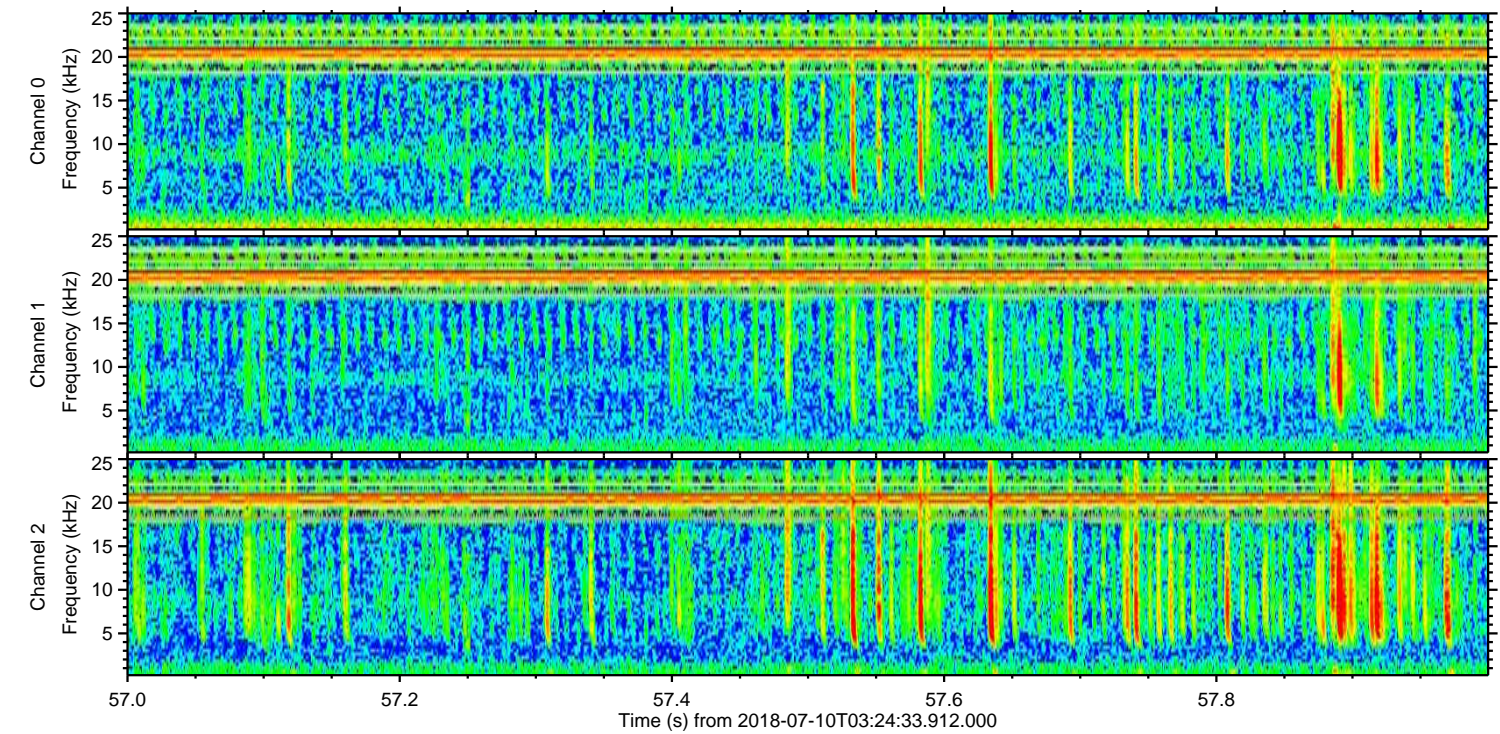
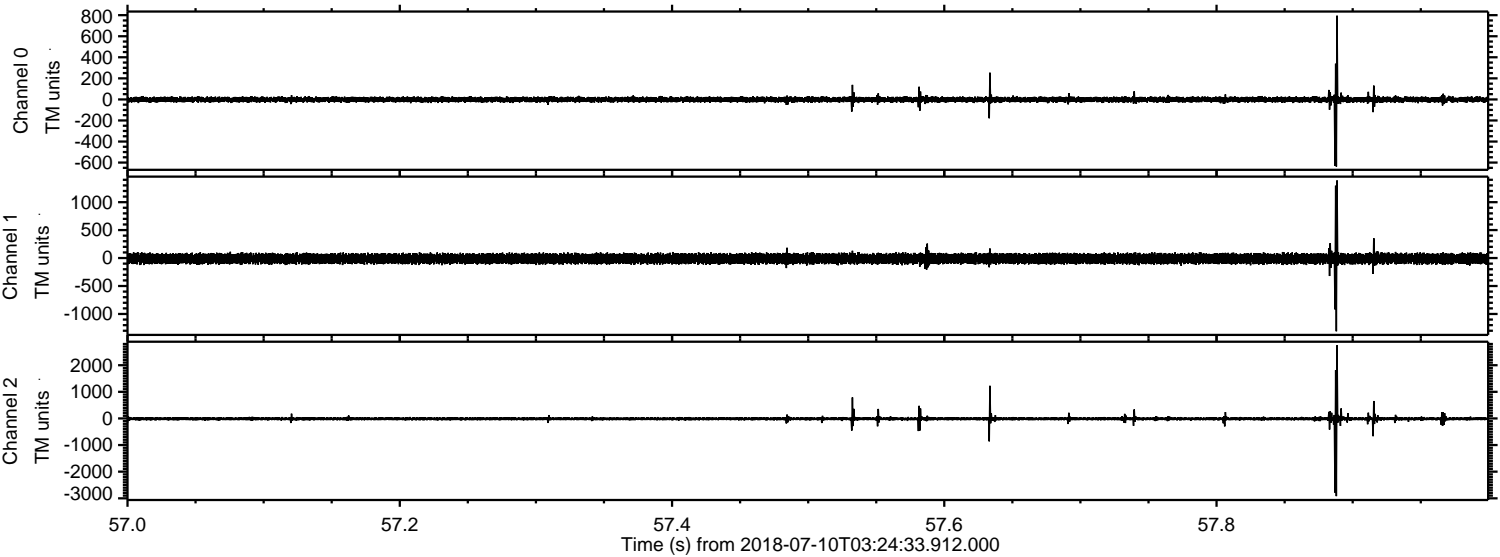
Processed Tue Jul 10 05:32:50 2018 by ELM ver.2012-10-06 from 001__elm20180710_032432__dat00.bin



Processed Tue Jul 10 05:32:51 2018 by ELM ver.2012-10-06 from 001__elm20180710_032432__dat00.bin

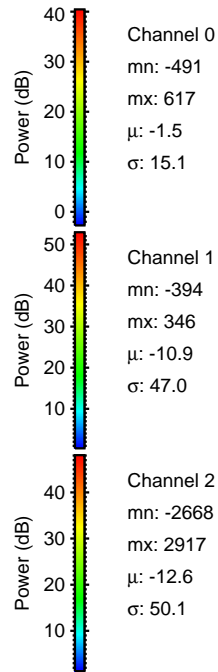
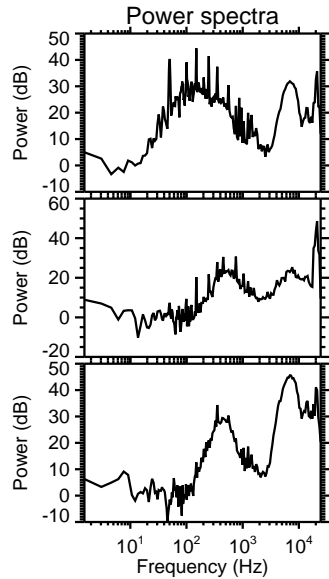
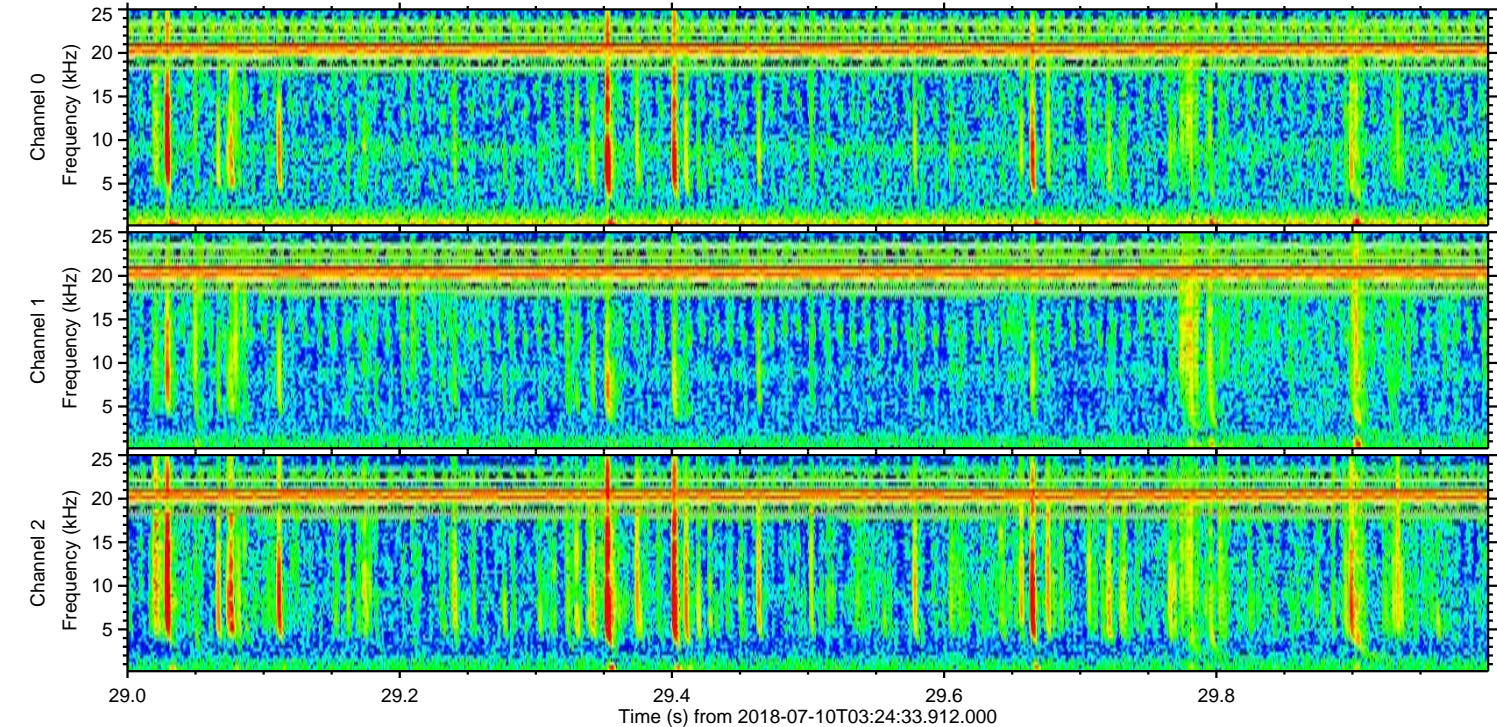
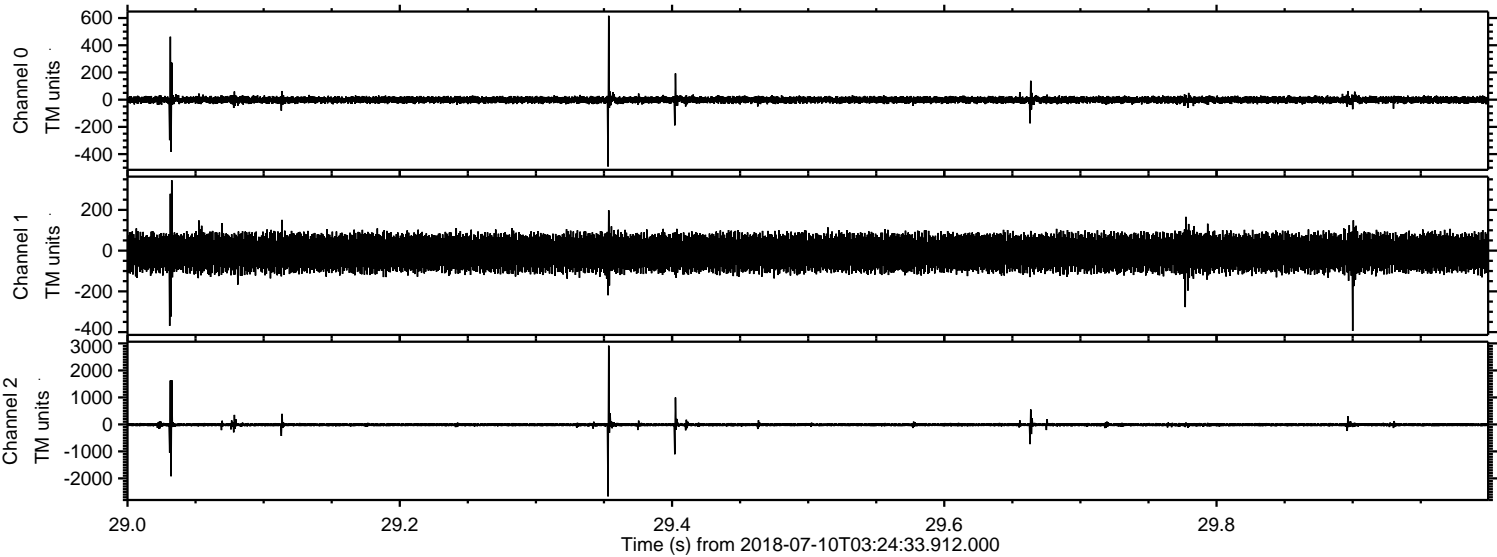


Processed Tue Jul 10 05:32:51 2018 by ELM ver.2012-10-06 from 001__elm20180710_032432__dat00.bin

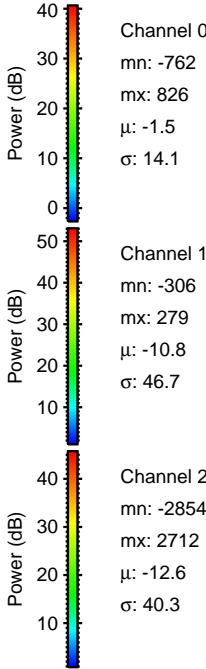
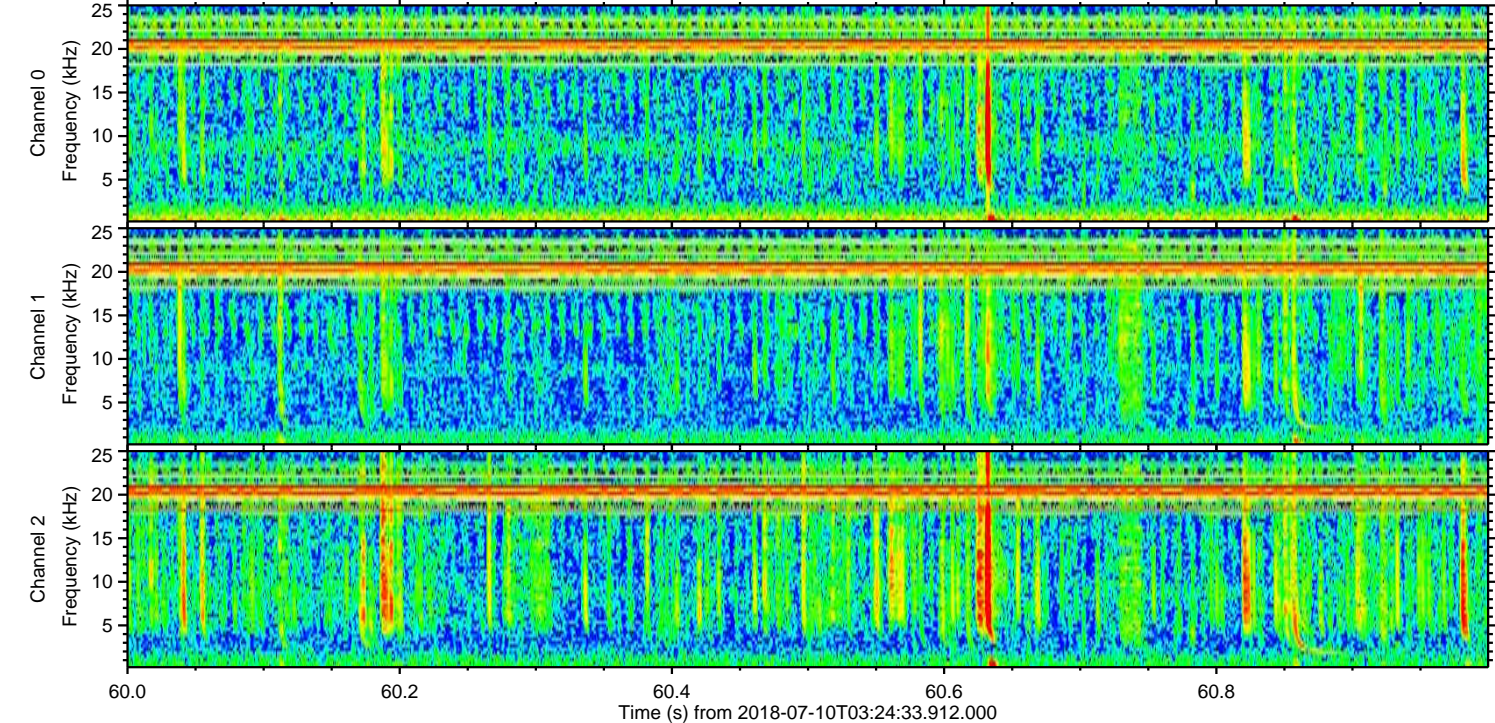
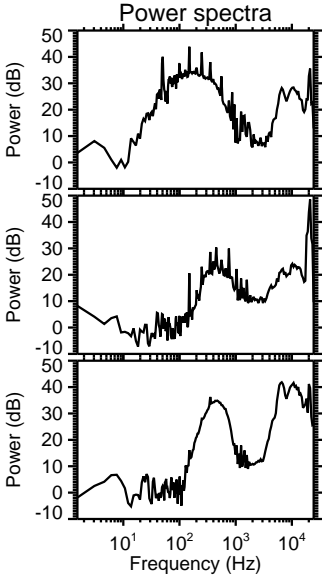
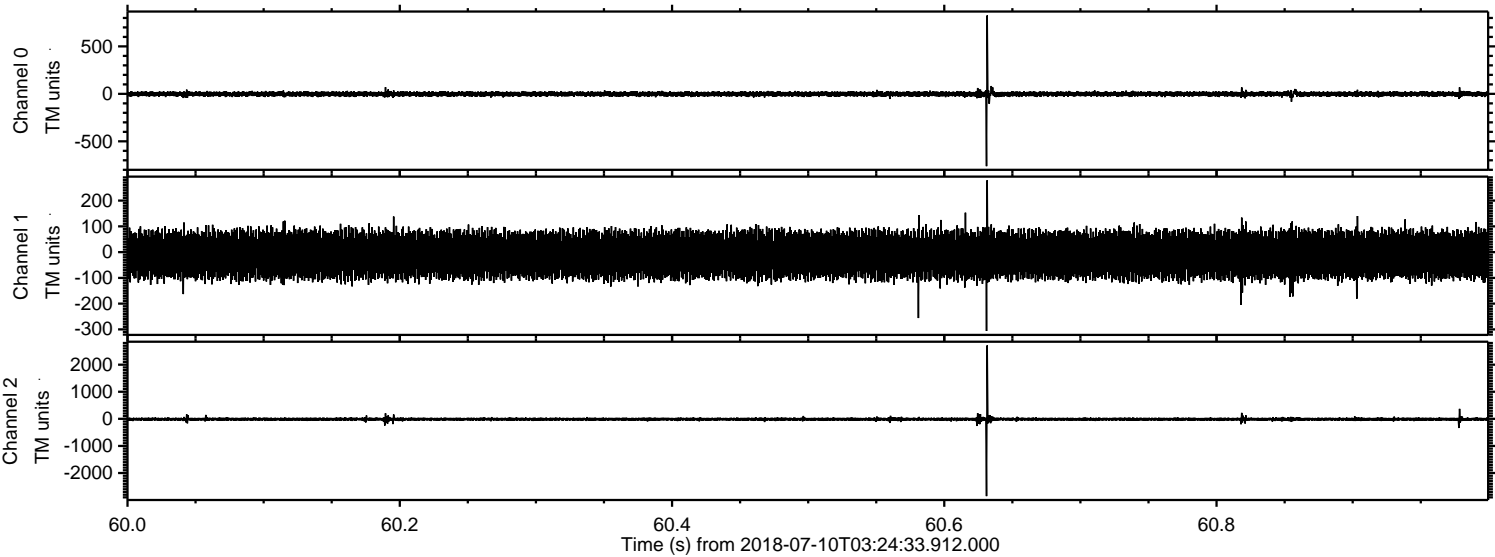


ELMAVAN 3D WAVEFORMS (Measured data sampled at 50 kHz) 51000 packets of 144 samples from 2018-07-10T03:24:33.912.000. Part 30/147

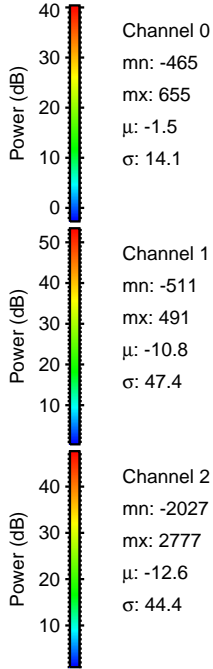
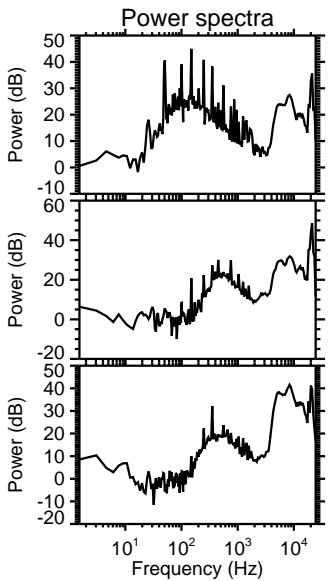
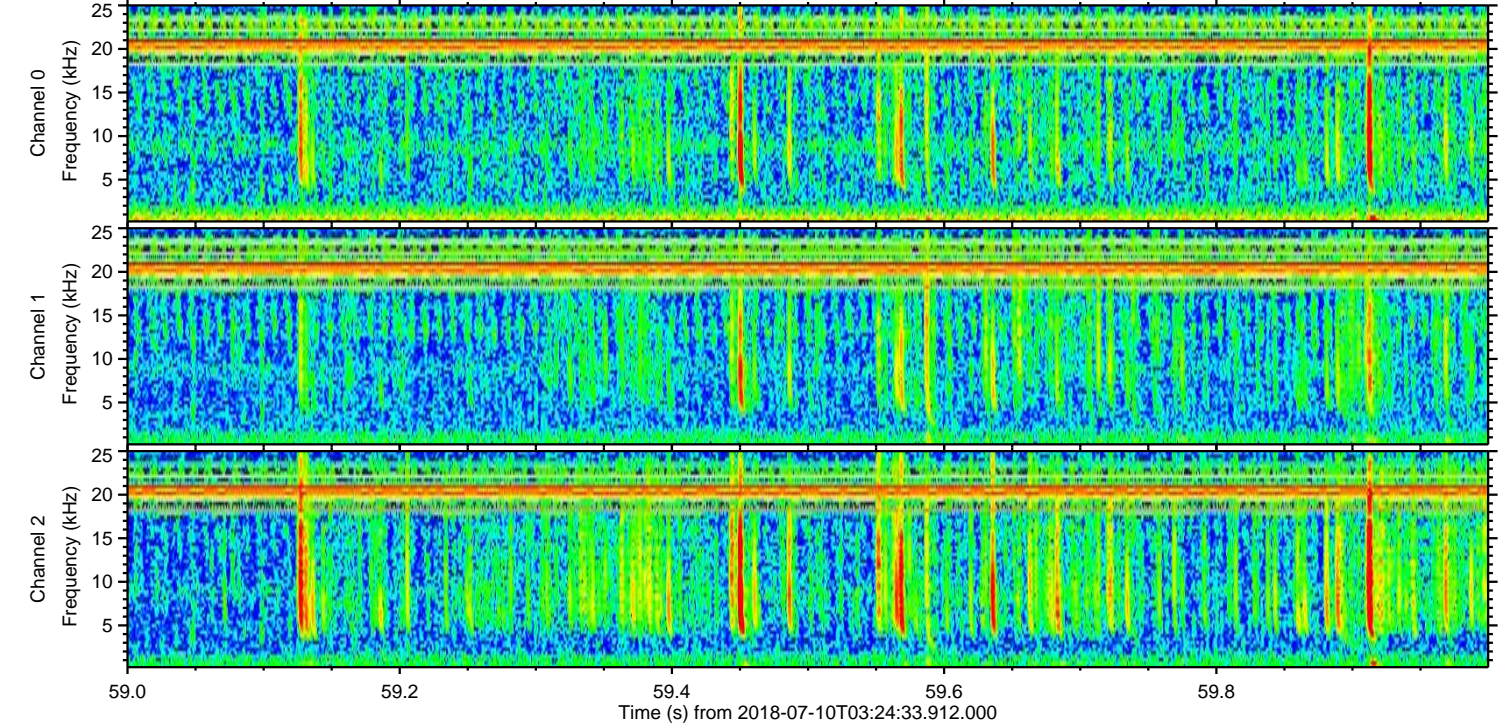
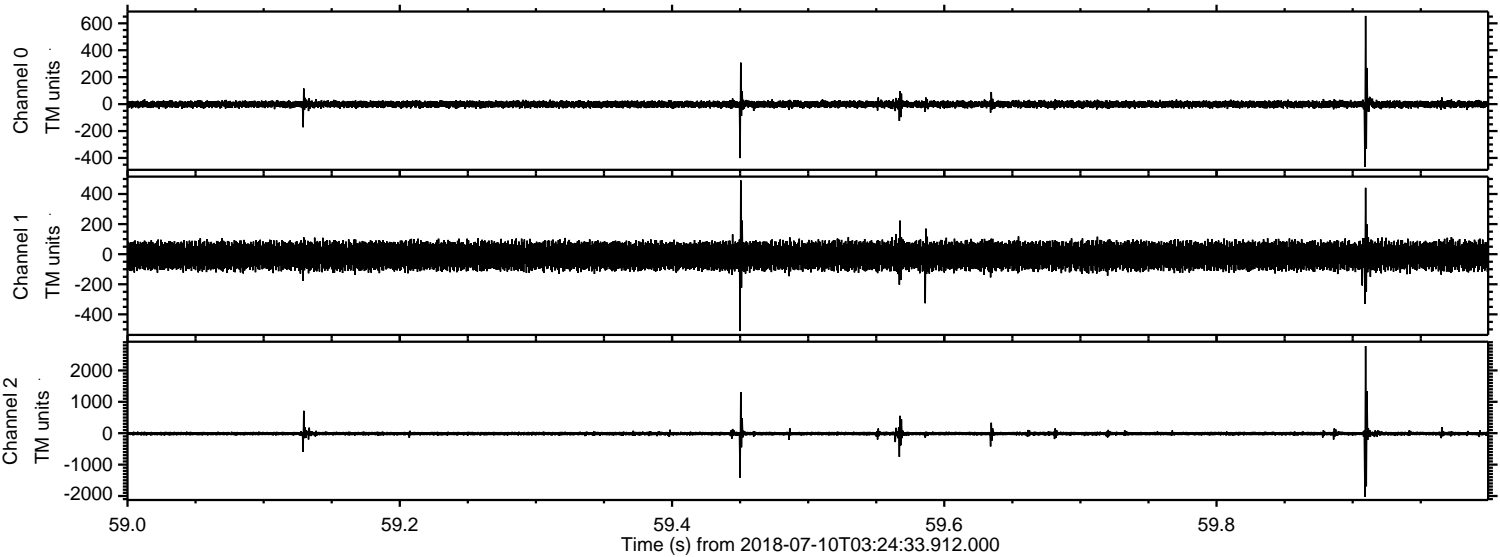
Processed Tue Jul 10 05:32:52 2018 by ELM ver.2012-10-06 from 001__elm20180710_032432__dat00.bin



Processed Tue Jul 10 05:32:53 2018 by ELM ver.2012-10-06 from 001__elm20180710_032432__dat00.bin

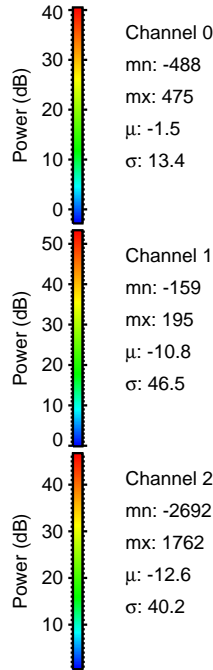
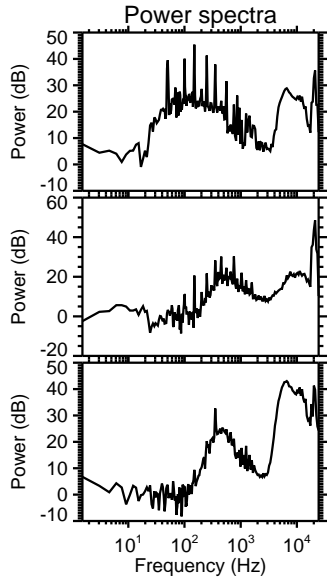
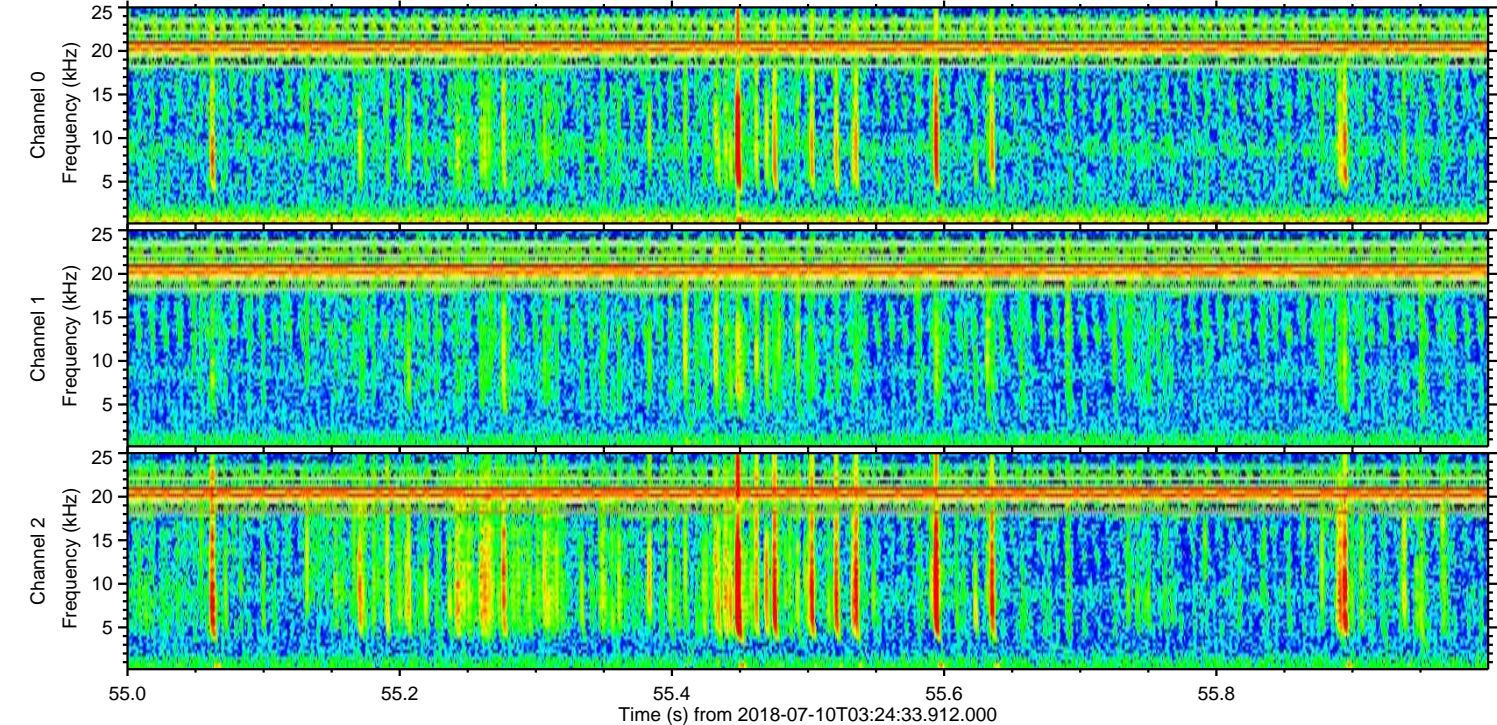
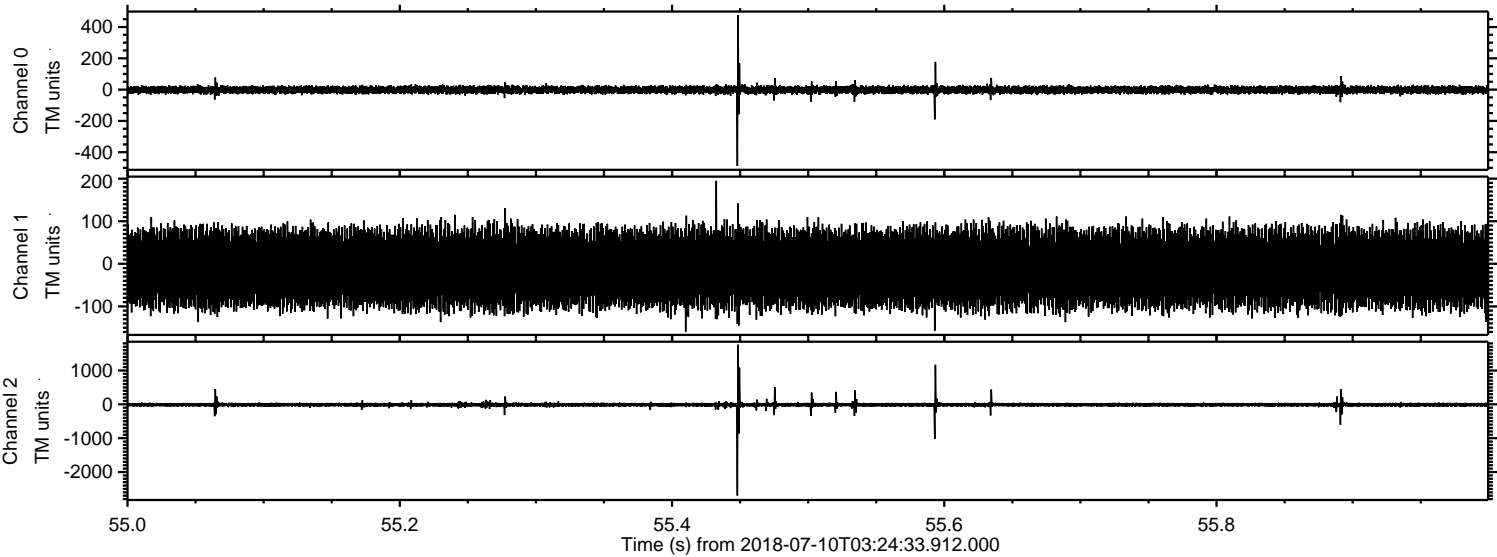


Processed Tue Jul 10 05:32:53 2018 by ELM ver.2012-10-06 from 001__elm20180710_032432__dat00.bin

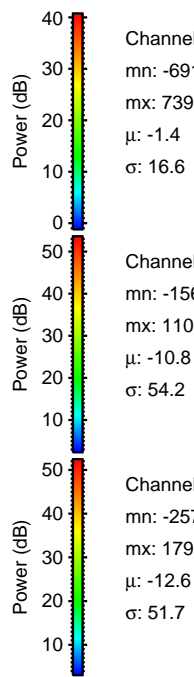
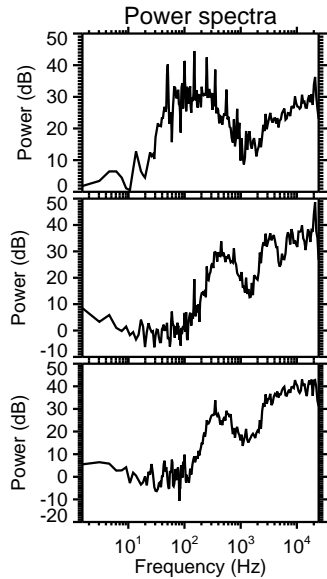
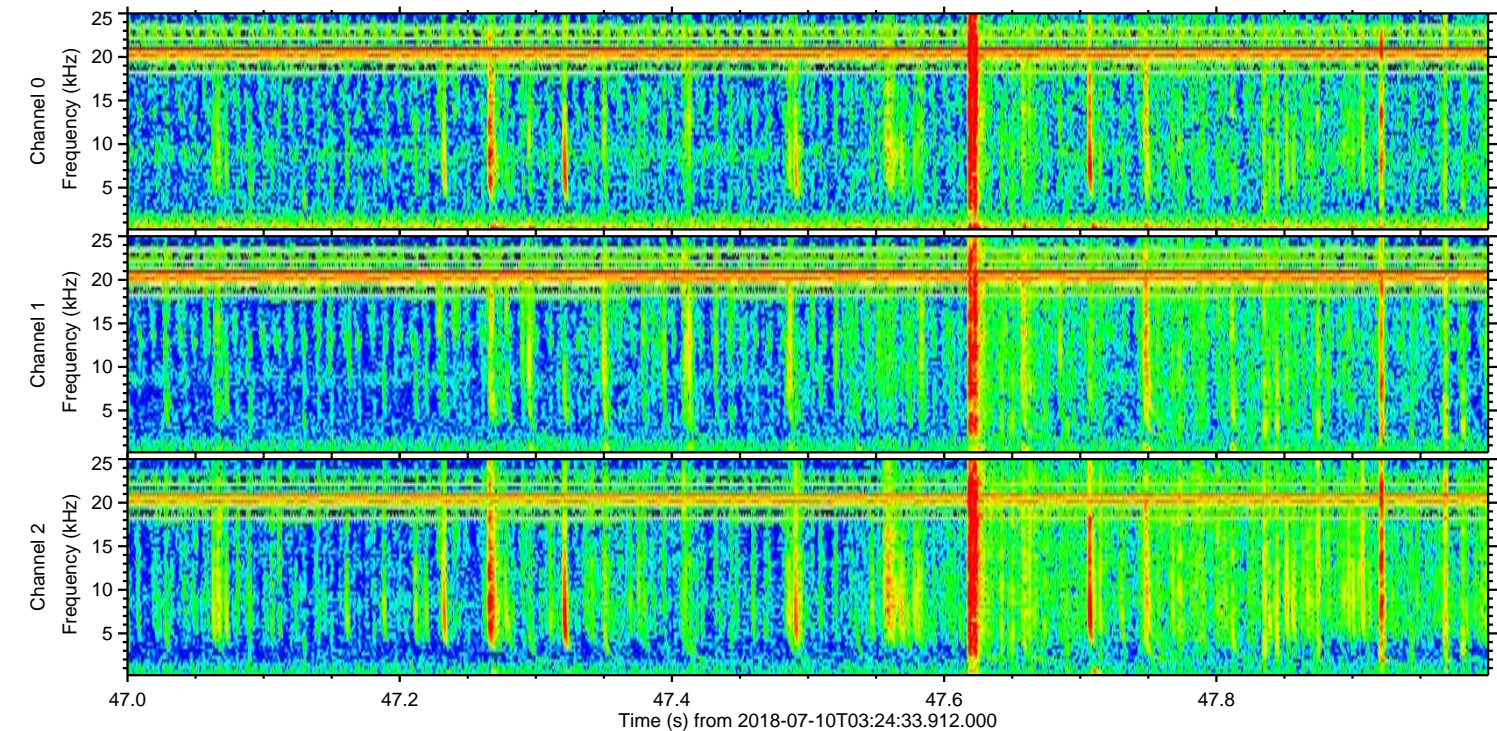
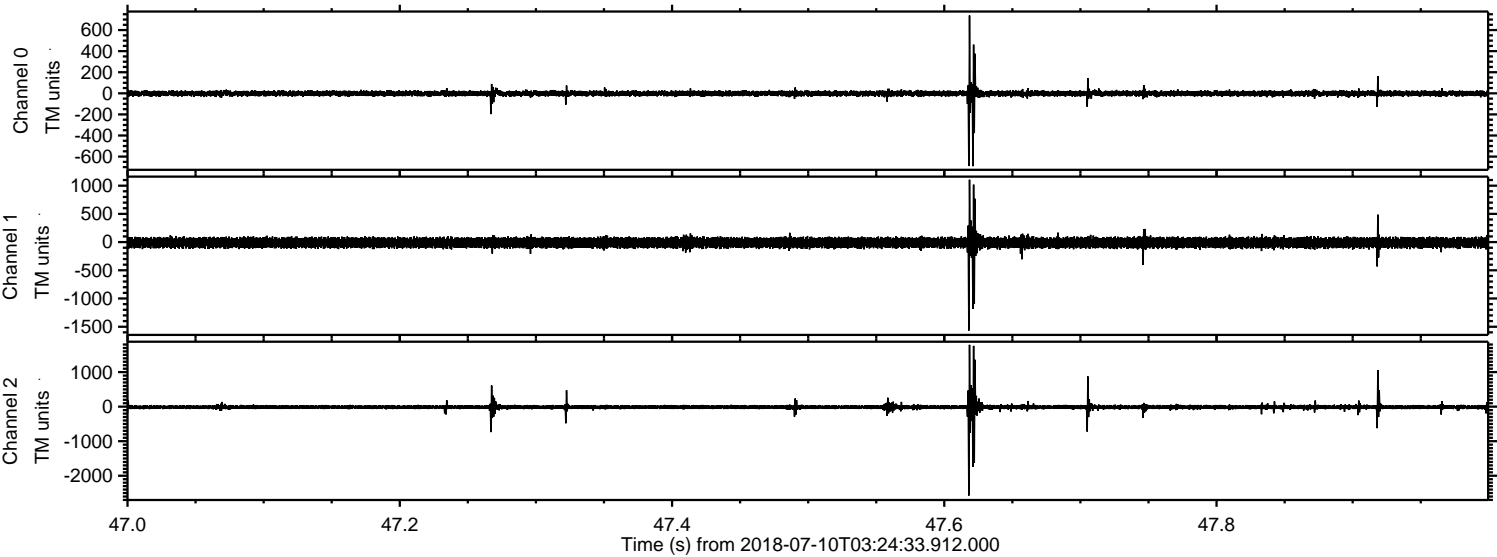


ELMAVAN 3D WAVEFORMS (Measured data sampled at 50 kHz) 51000 packets of 144 samples from 2018-07-10T03:24:33.912.000. Part 56/147

Processed Tue Jul 10 05:32:54 2018 by ELM ver.2012-10-06 from 001__elm20180710_032432__dat00.bin



Processed Tue Jul 10 05:32:55 2018 by ELM ver.2012-10-06 from 001__elm20180710_032432__dat00.bin

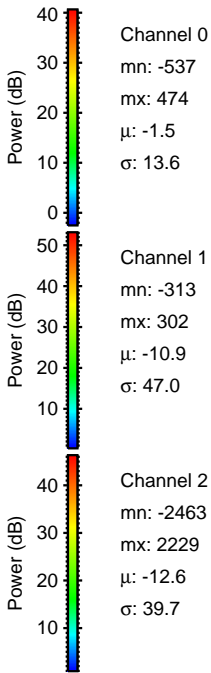
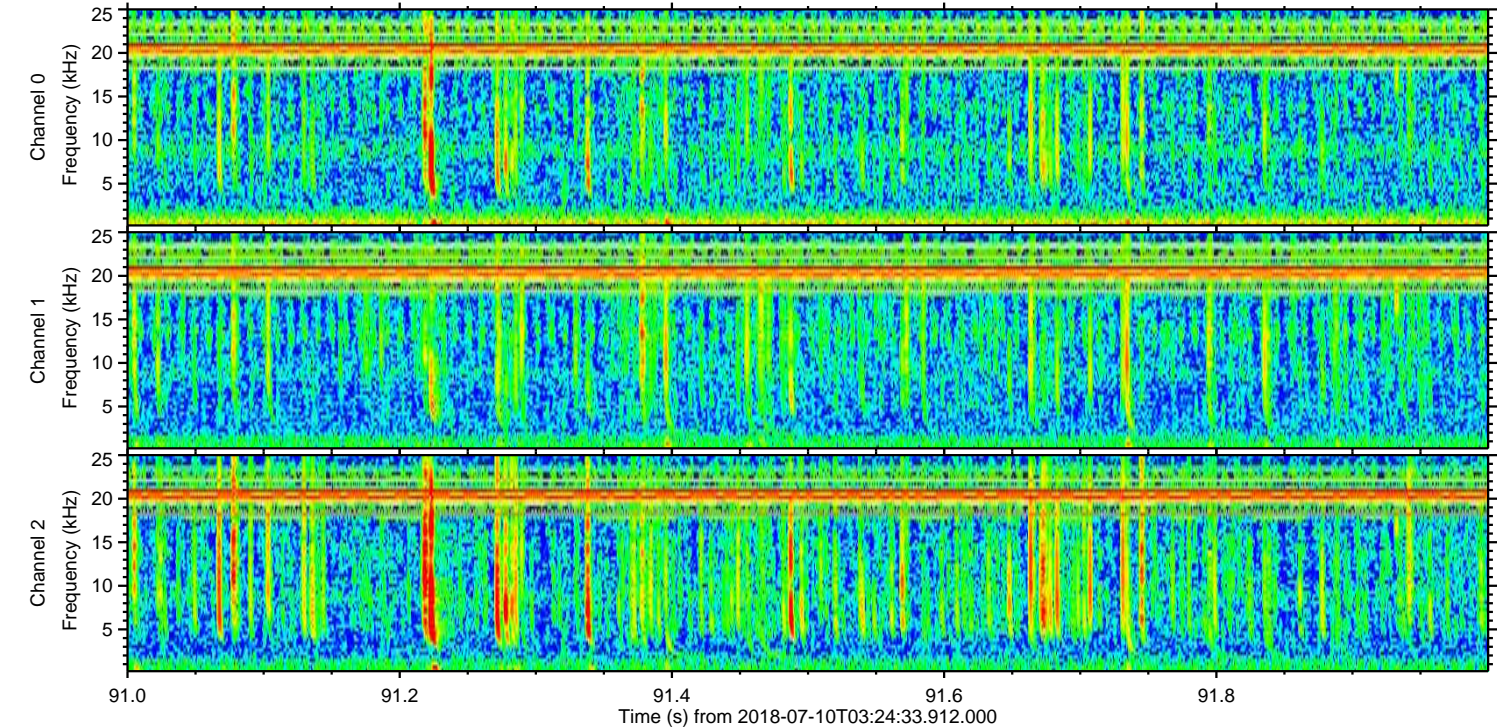
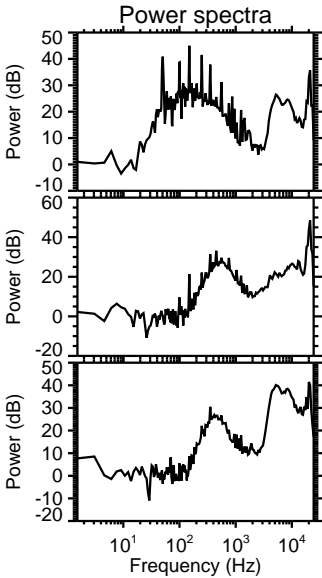
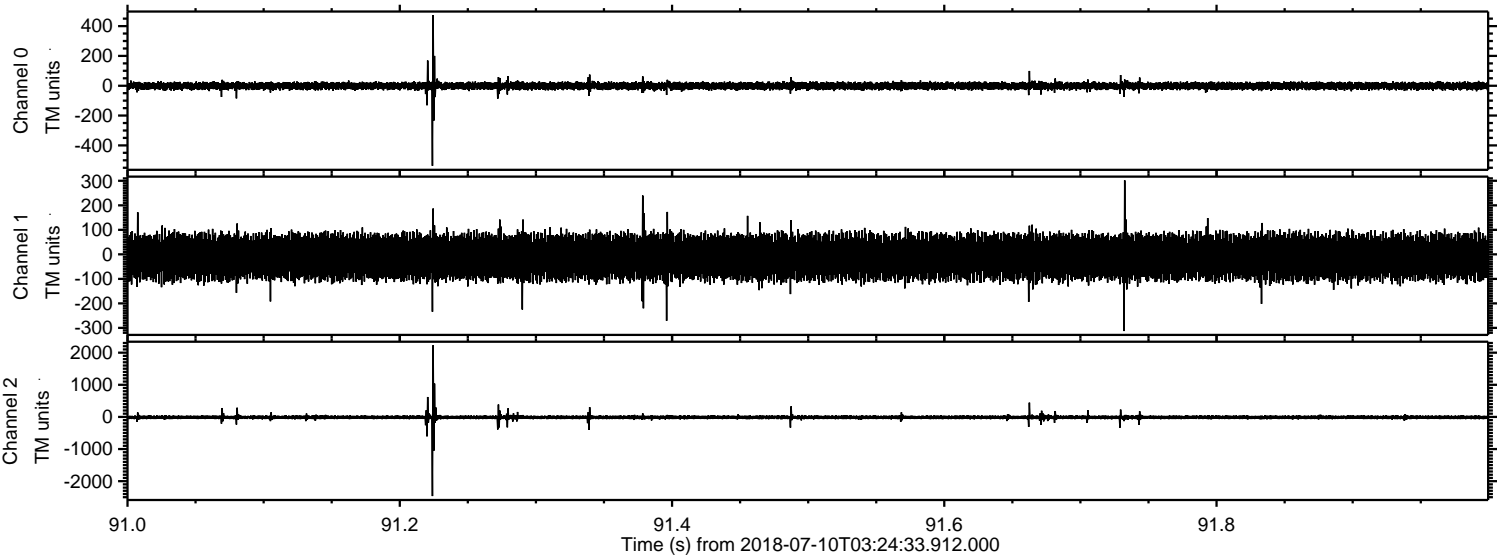


Channel 0
mn: -691
mx: 739
 μ : -1.4
 σ : 16.6

Channel 1
mn: -1567
mx: 1105
 μ : -10.8
 σ : 54.2

Channel 2
mn: -2573
mx: 1791
 μ : -12.6
 σ : 51.7

Processed Tue Jul 10 05:32:55 2018 by ELM ver.2012-10-06 from 001__elm20180710_032432__dat00.bin



Processed Tue Jul 10 05:32:56 2018 by ELM ver.2012-10-06 from 001__elm20180710_032432__dat00.bin

