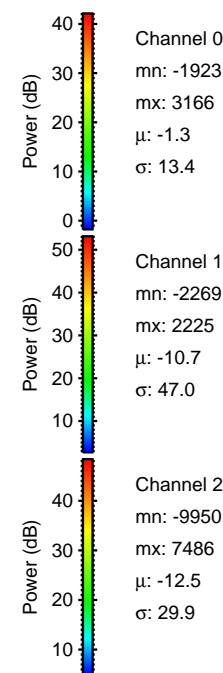
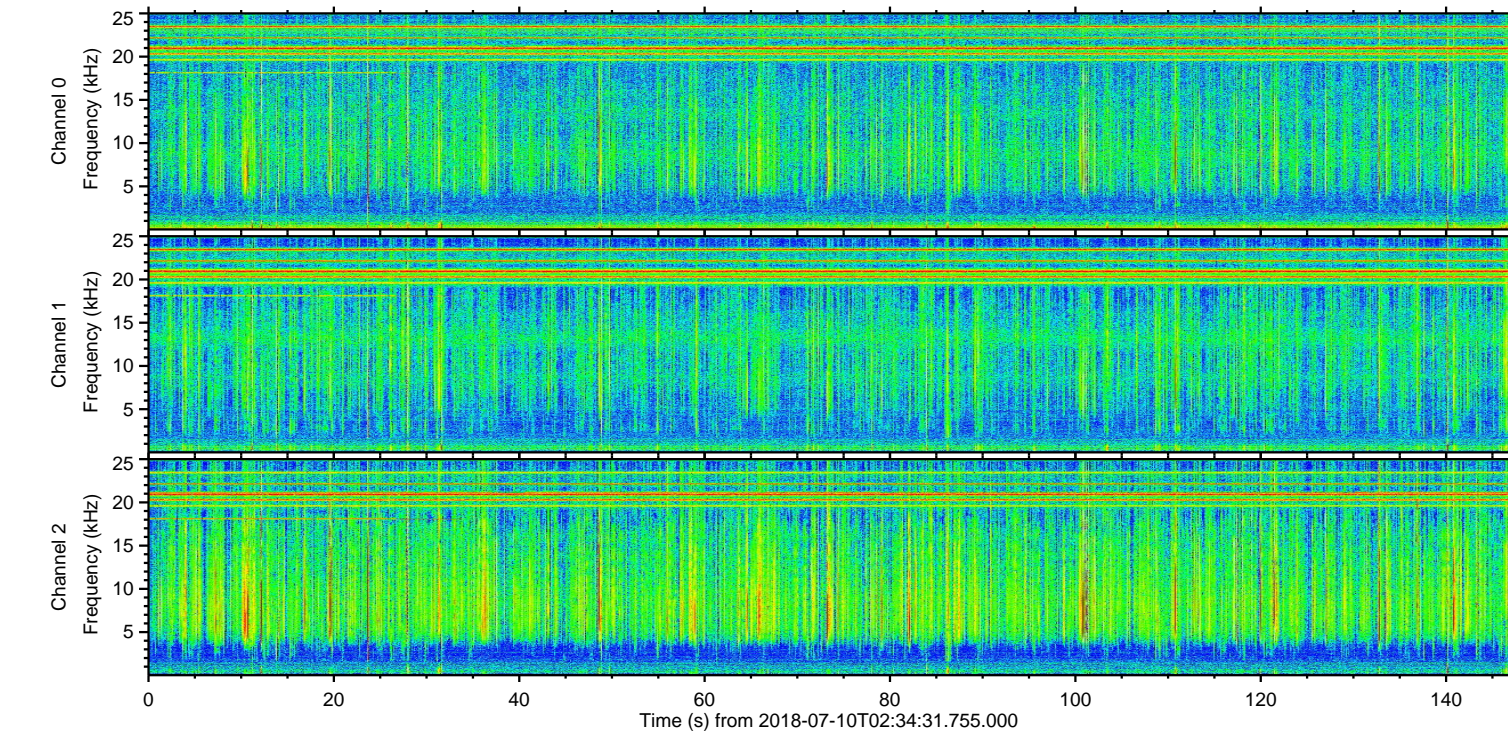
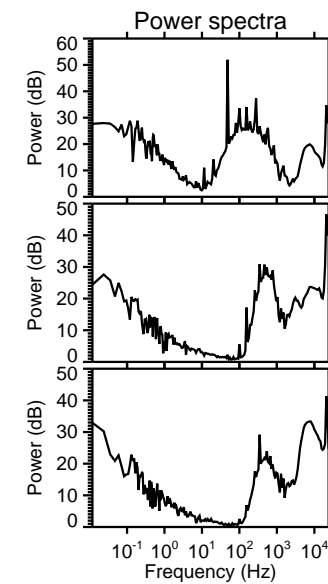
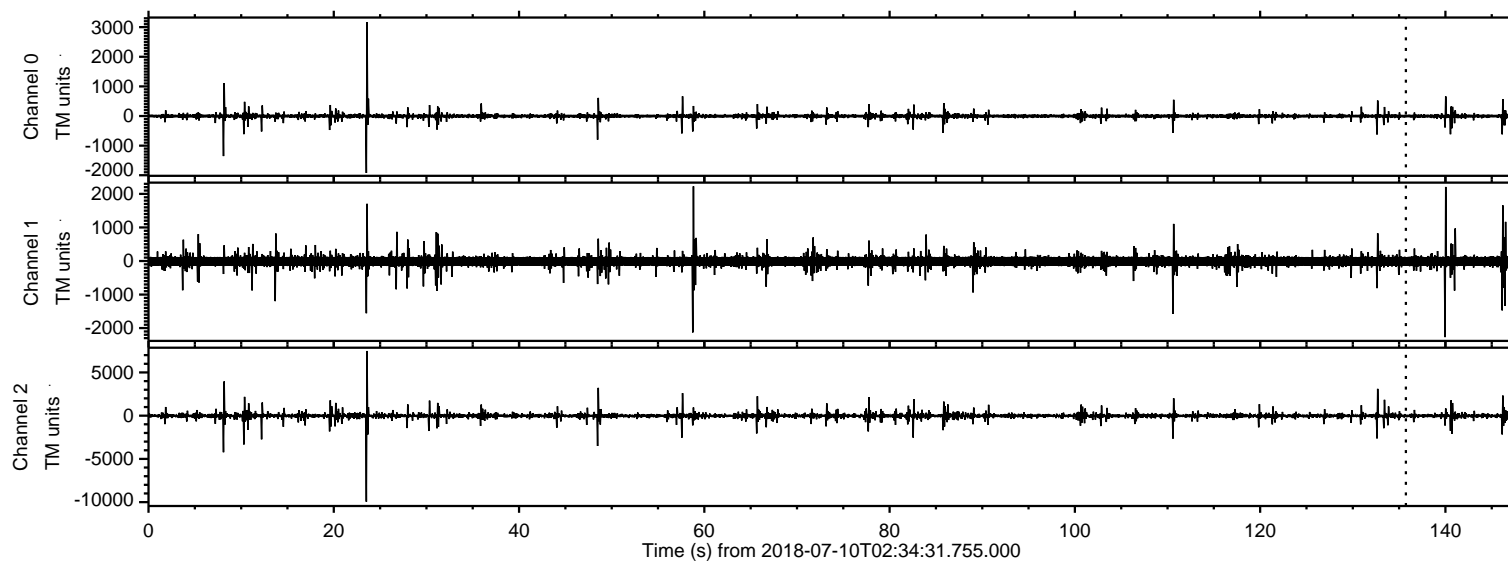


ELMAVAN 3D WAVEFORMS (Measured data sampled at 50 kHz) 50999 packets of 144 samples from 2018-07-10T02:34:31.755.000.

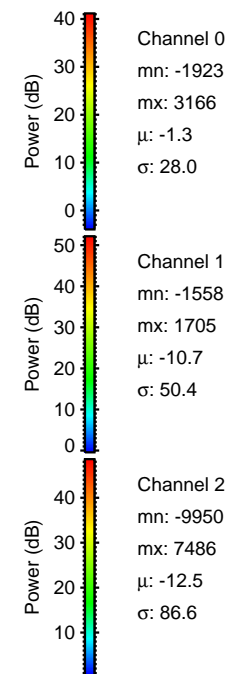
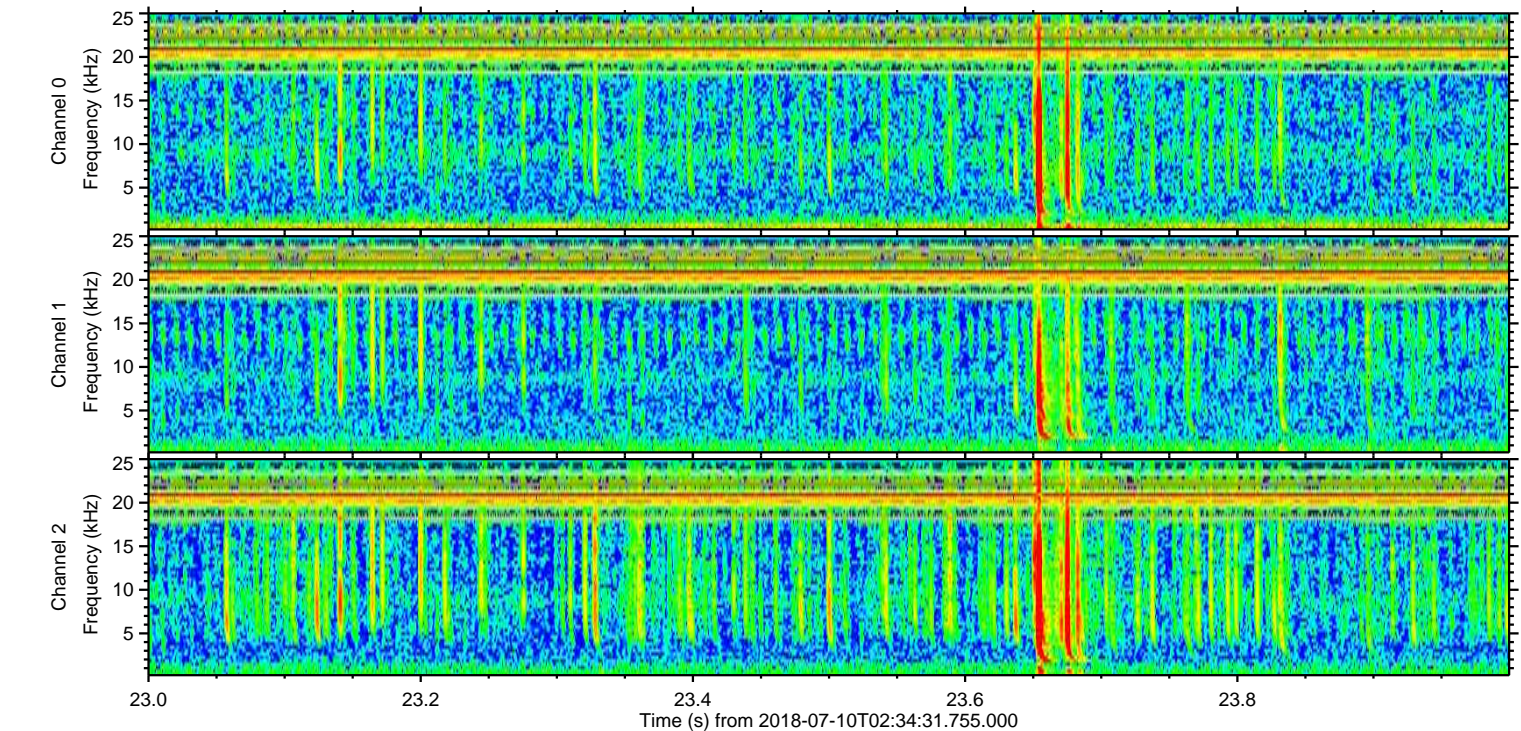
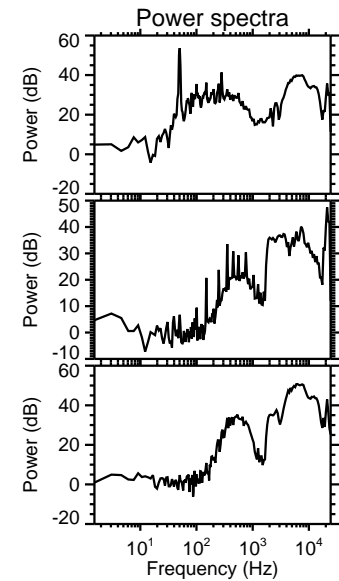
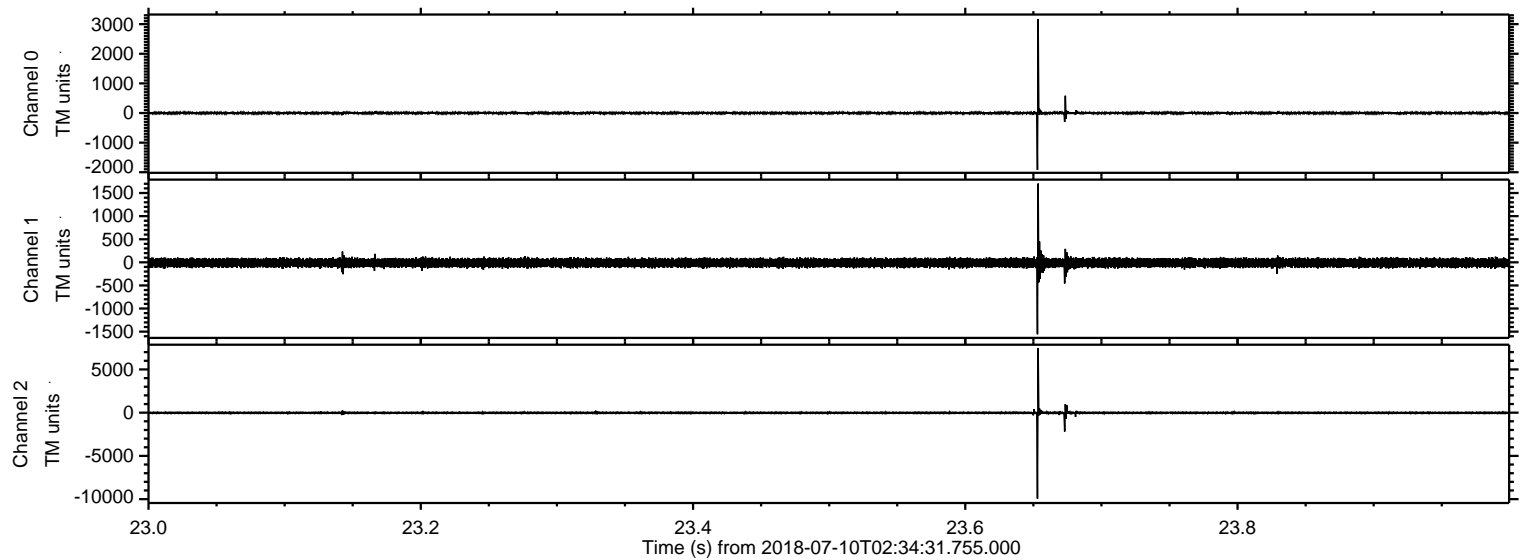
Processed Tue Jul 10 04:42:26 2018 by ELM ver.2012-10-06 from 001\_\_elm20180710\_023430\_\_dat00.bin





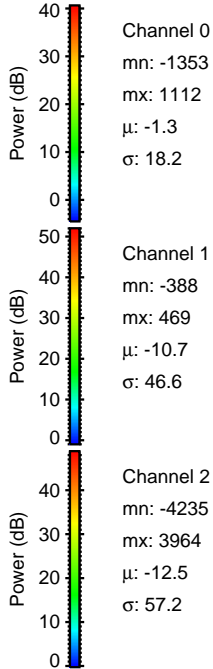
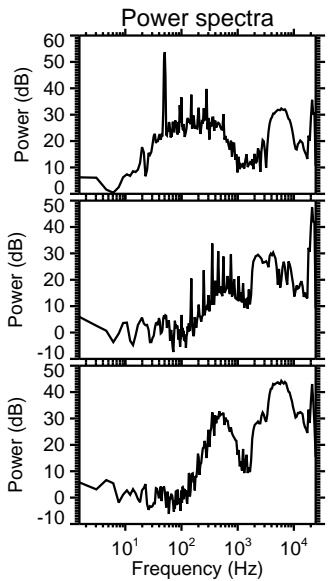
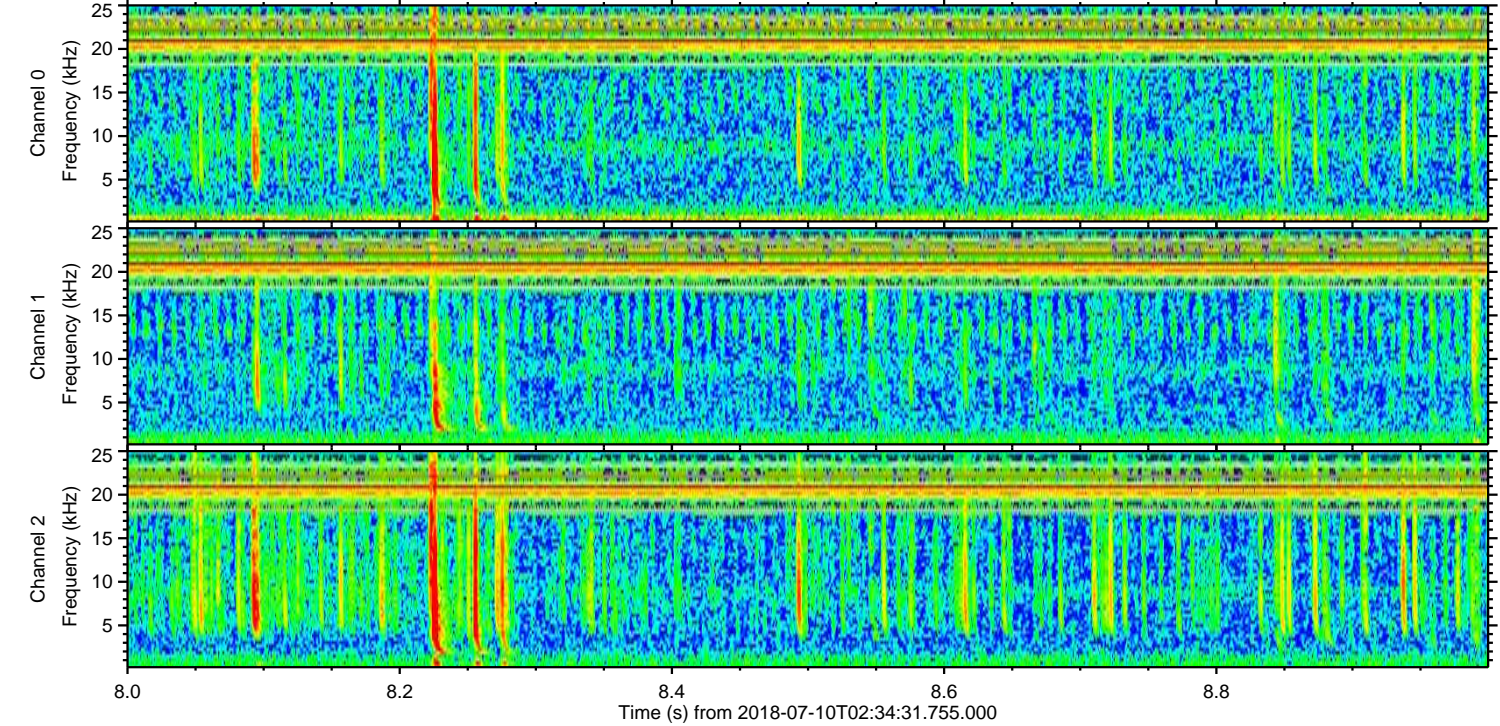
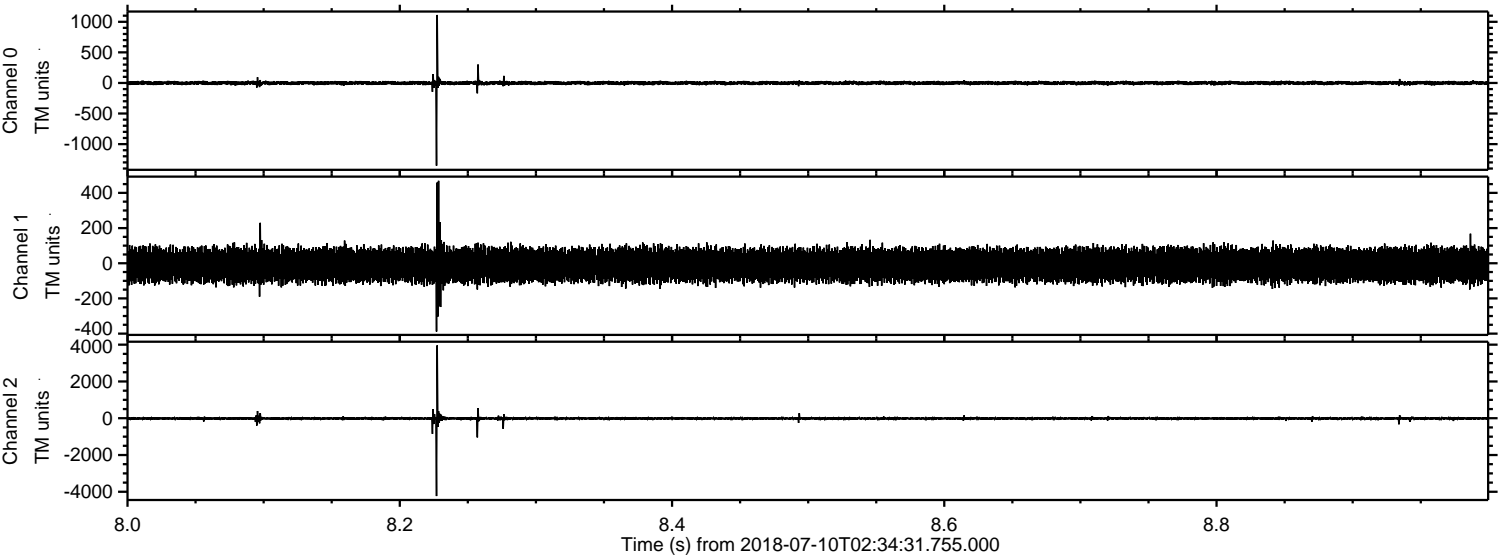
ELMAVAN 3D WAVEFORMS (Measured data sampled at 50 kHz) 50999 packets of 144 samples from 2018-07-10T02:34:31.755.000. Part 24/147

Processed Tue Jul 10 04:42:32 2018 by ELM ver.2012-10-06 from 001\_\_elm20180710\_023430\_\_dat00.bin



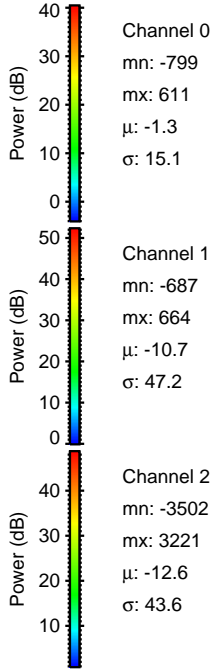
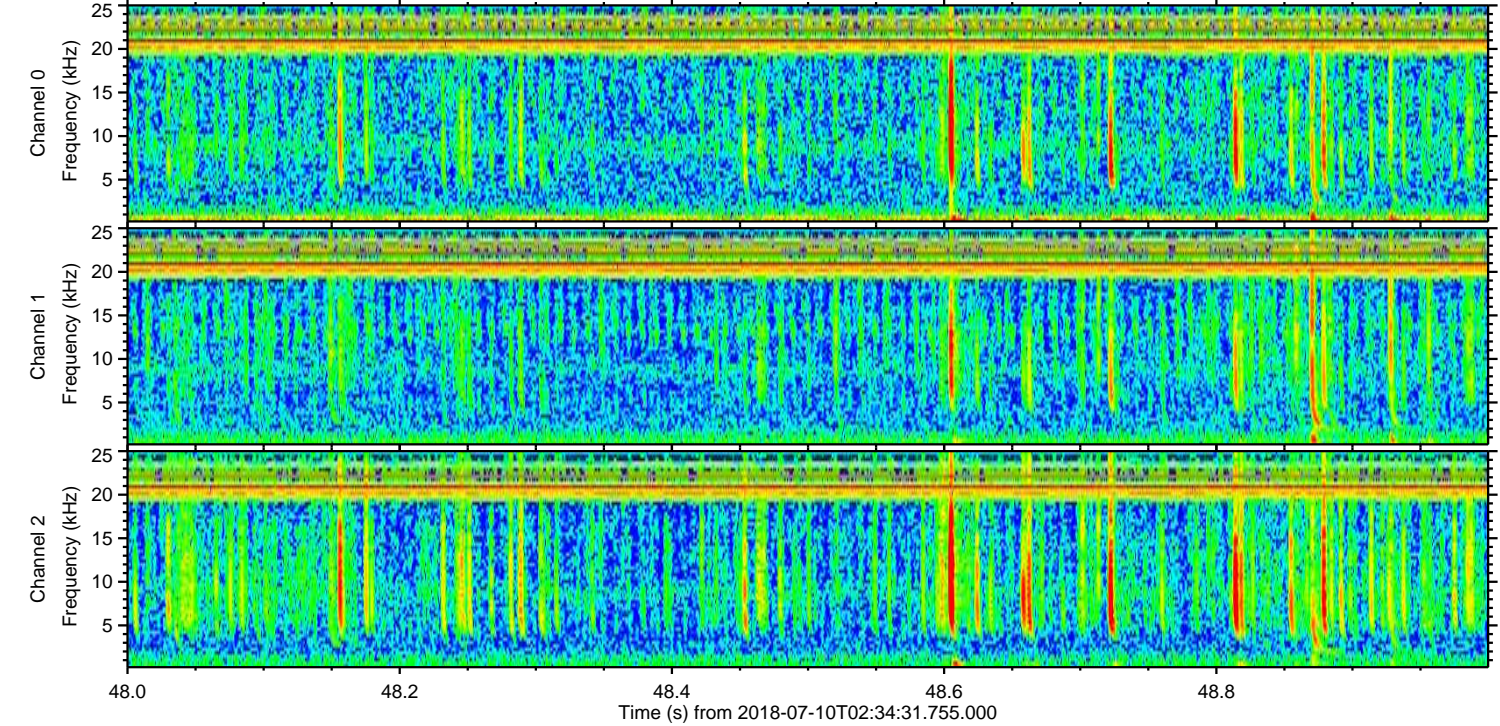
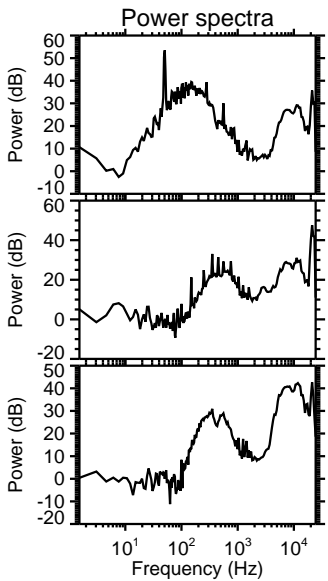
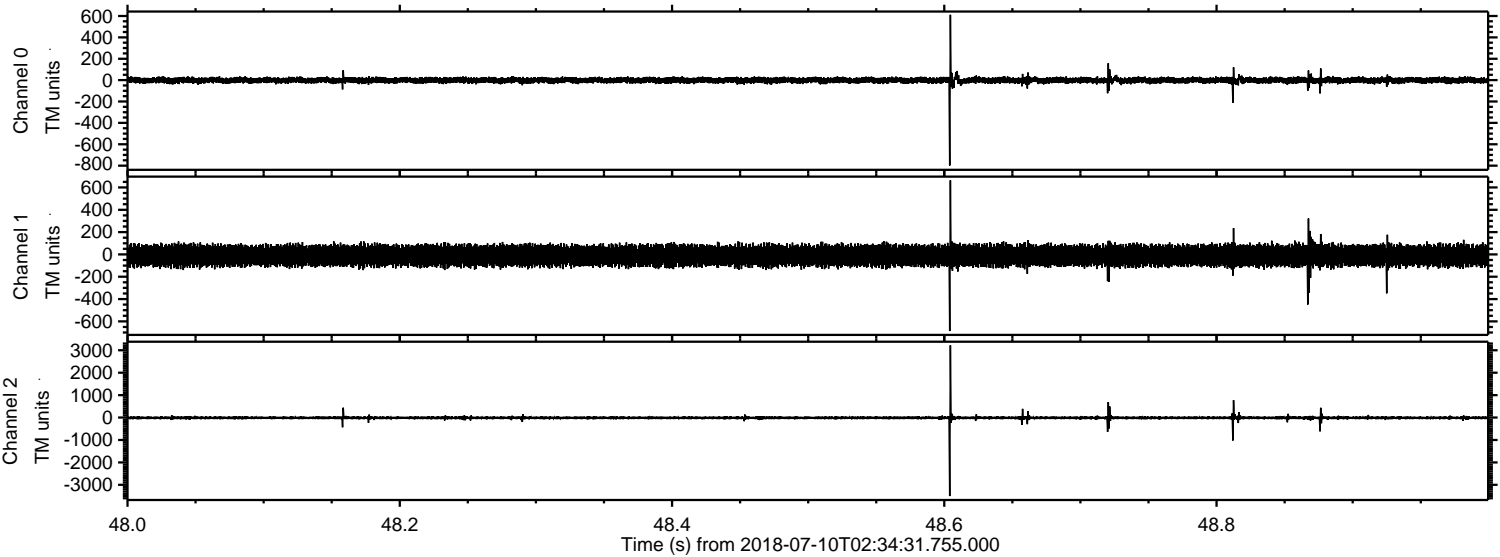


Processed Tue Jul 10 04:42:33 2018 by ELM ver.2012-10-06 from 001\_\_elm20180710\_023430\_\_dat00.bin





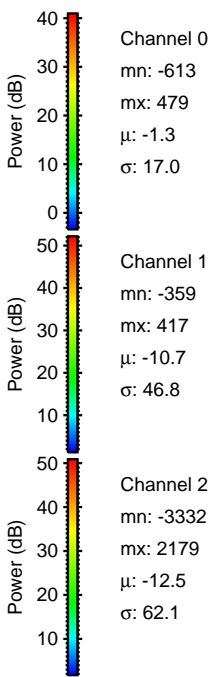
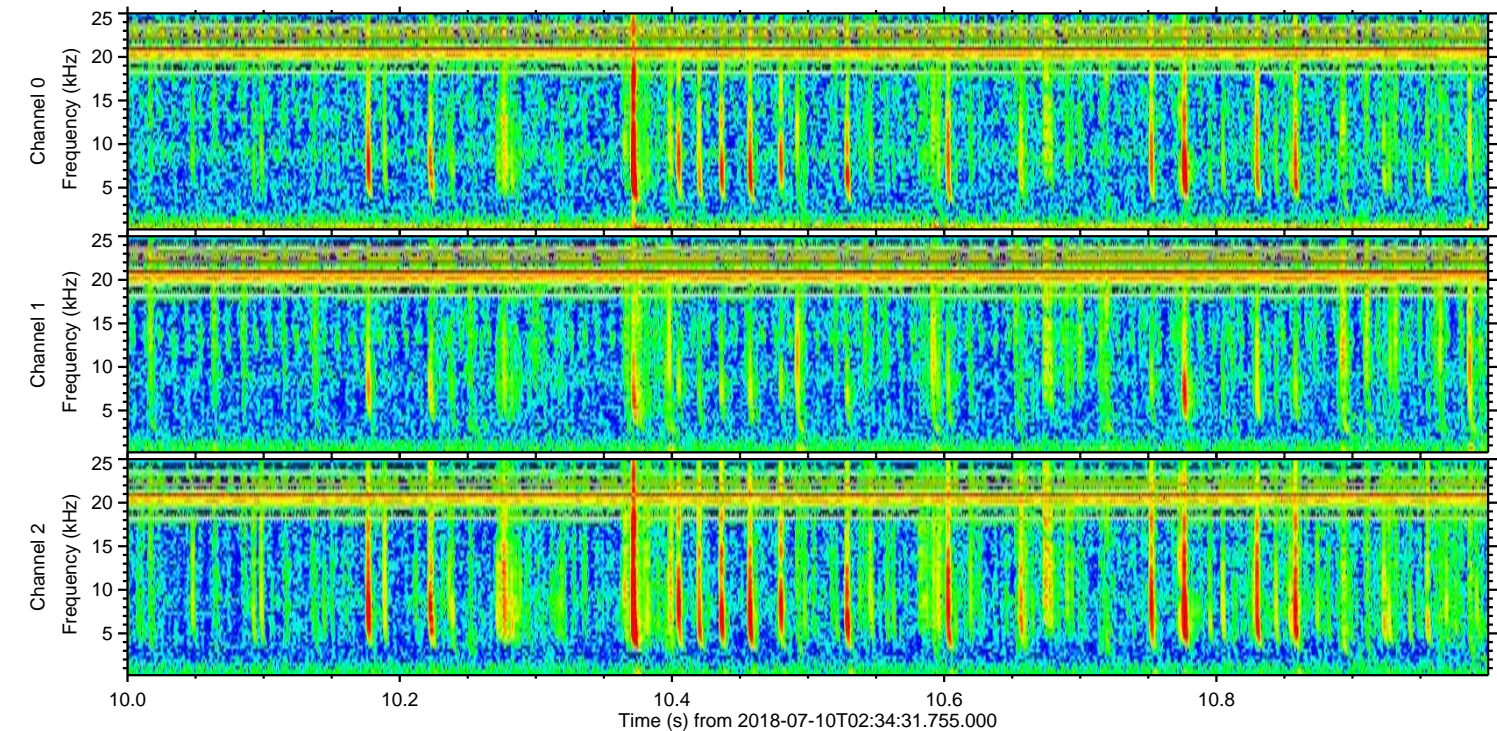
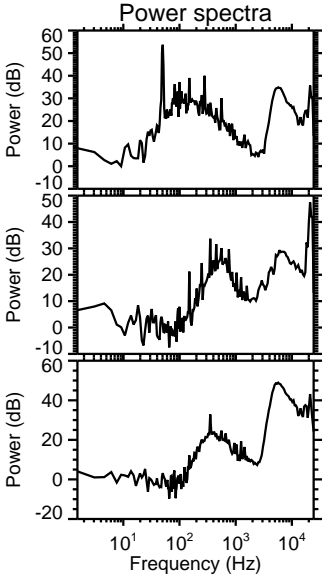
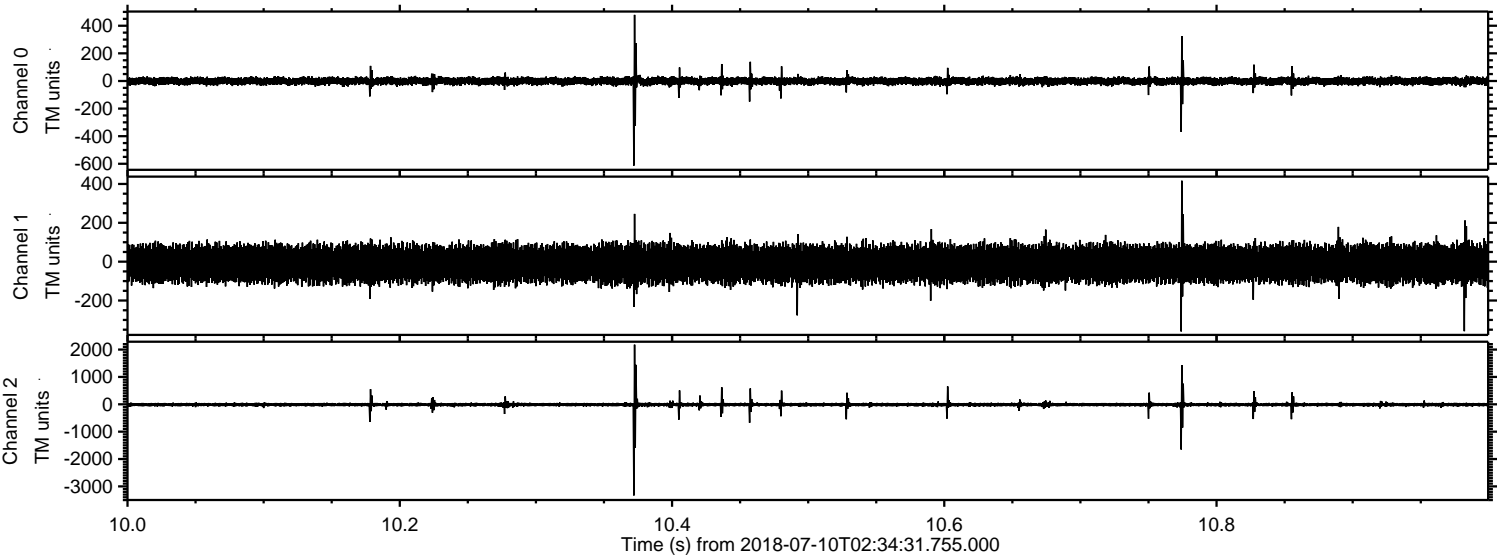
Processed Tue Jul 10 04:42:33 2018 by ELM ver.2012-10-06 from 001\_\_elm20180710\_023430\_\_dat00.bin





ELMAVAN 3D WAVEFORMS (Measured data sampled at 50 kHz) 50999 packets of 144 samples from 2018-07-10T02:34:31.755.000. Part 11/147

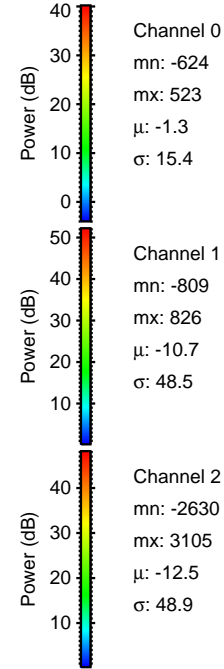
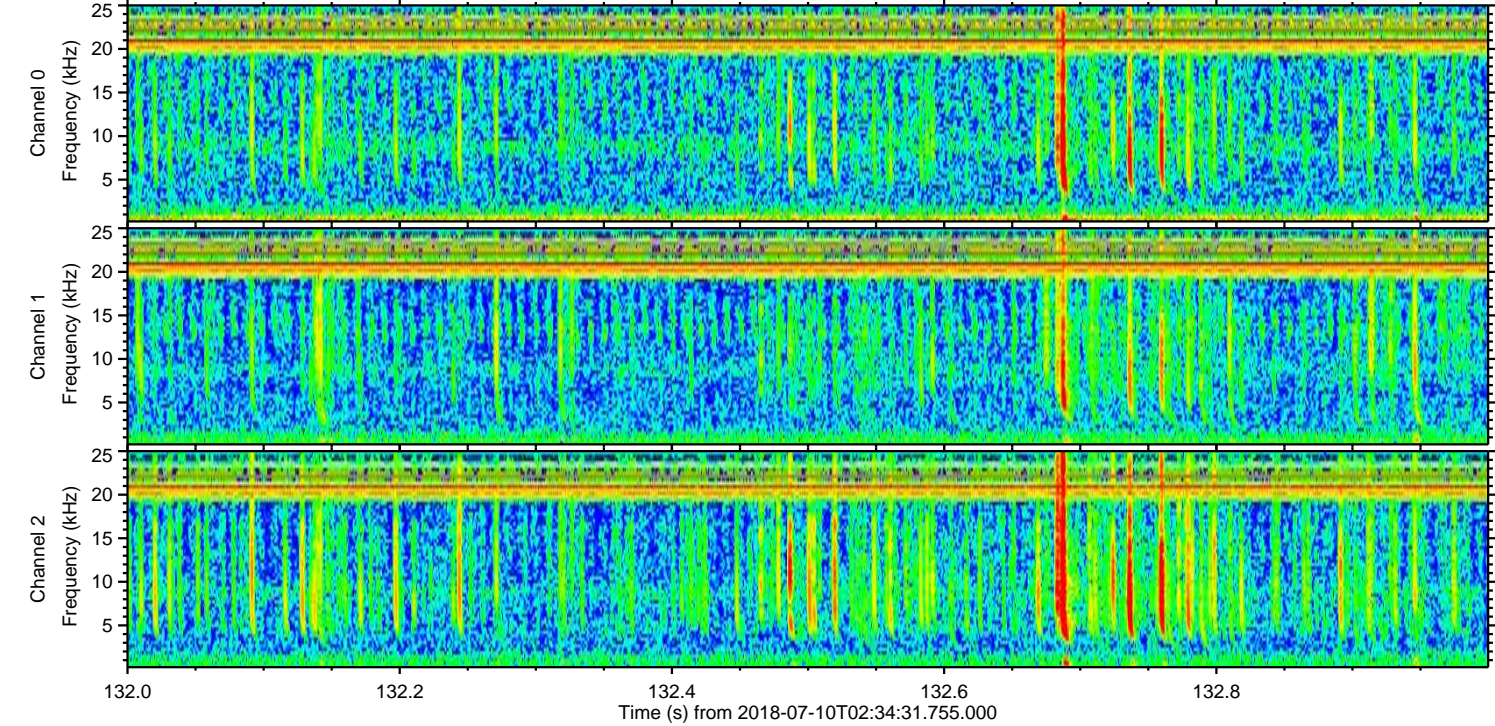
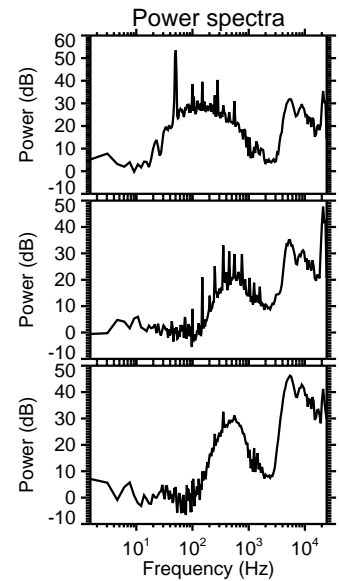
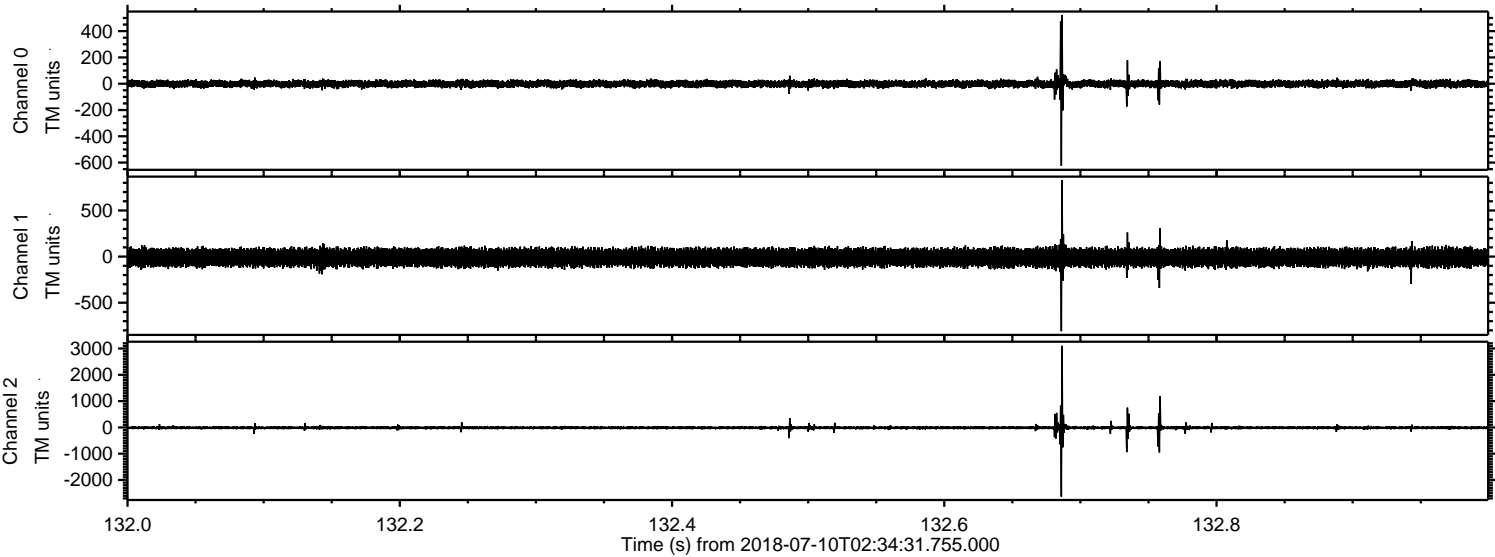
Processed Tue Jul 10 04:42:34 2018 by ELM ver.2012-10-06 from 001\_\_elm20180710\_023430\_\_dat00.bin





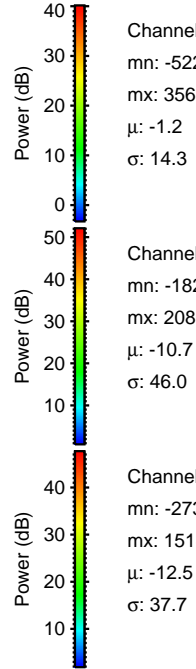
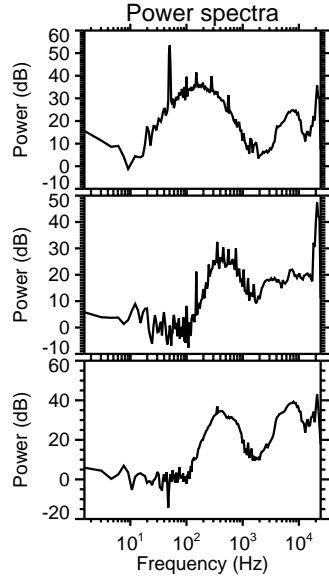
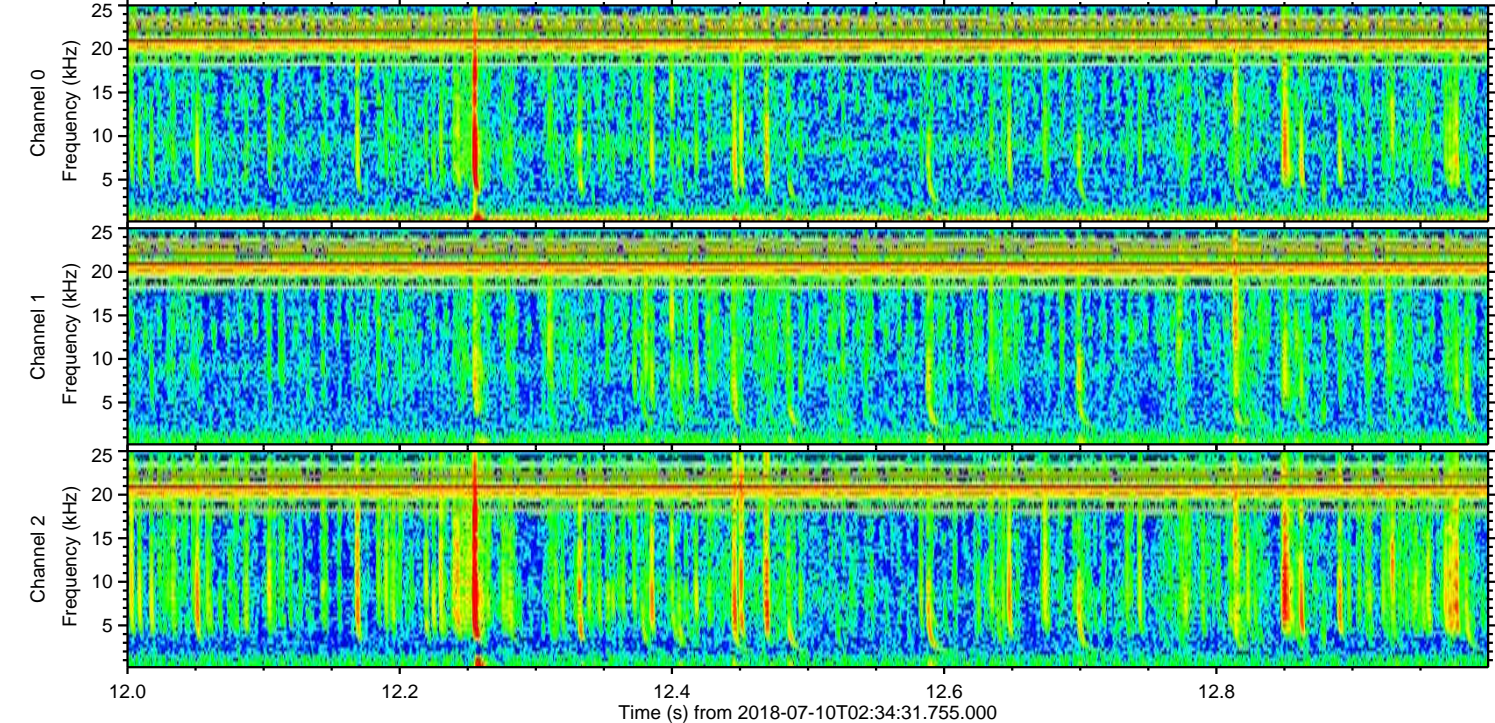
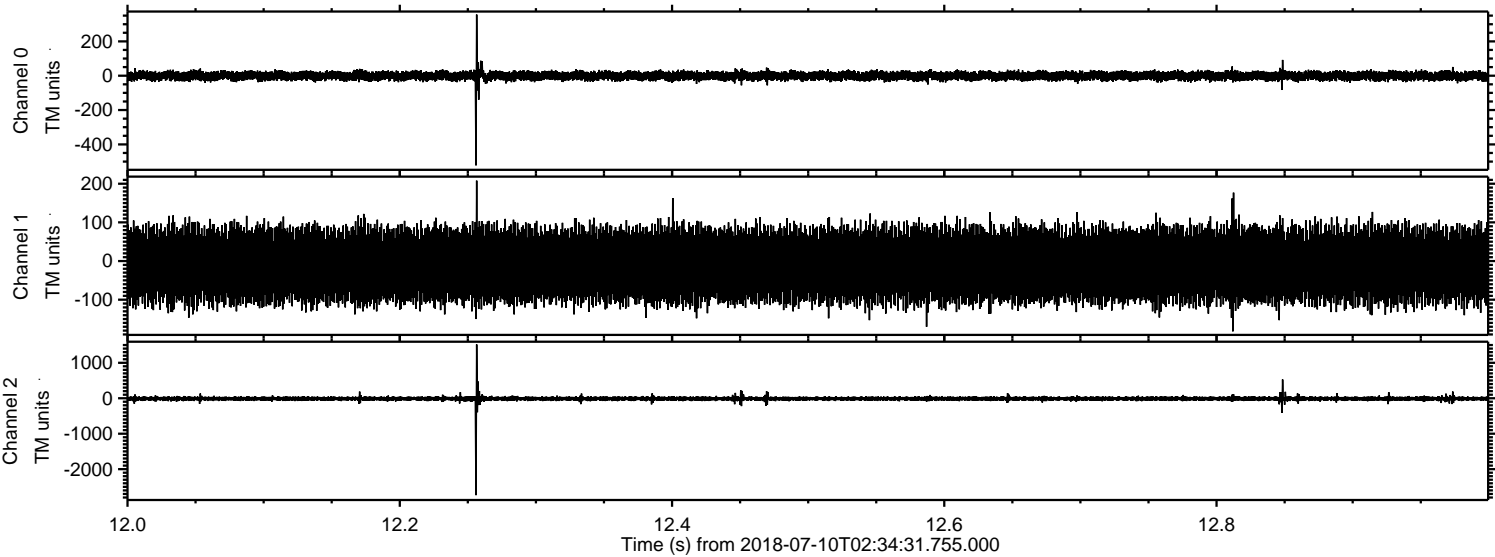
ELMAVAN 3D WAVEFORMS (Measured data sampled at 50 kHz) 50999 packets of 144 samples from 2018-07-10T02:34:31.755.000. Part 133/147

Processed Tue Jul 10 04:42:35 2018 by ELM ver.2012-10-06 from 001\_\_elm20180710\_023430\_\_dat00.bin





Processed Tue Jul 10 04:42:35 2018 by ELM ver.2012-10-06 from 001\_\_elm20180710\_023430\_\_dat00.bin



Channel 0  
mn: -522  
mx: 356  
 $\mu$ : -1.2  
 $\sigma$ : 14.3

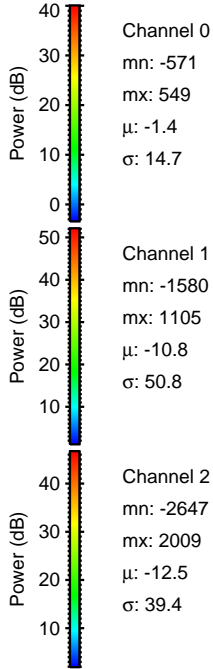
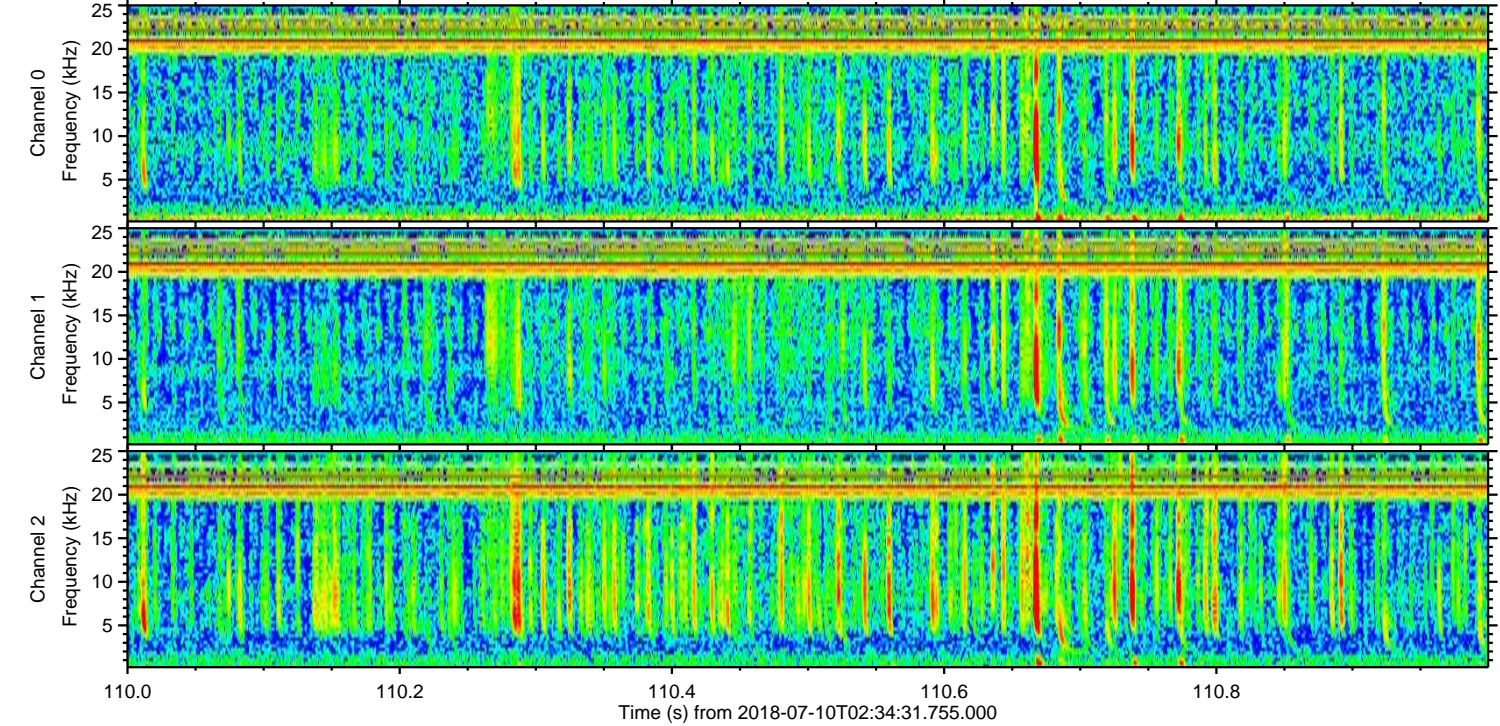
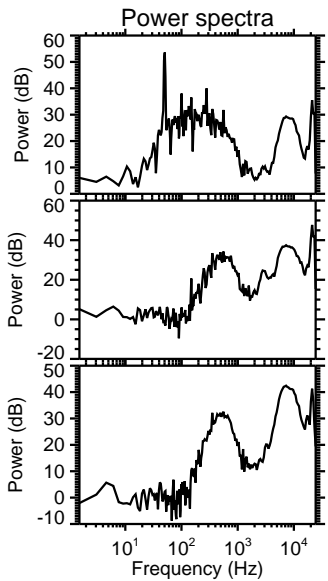
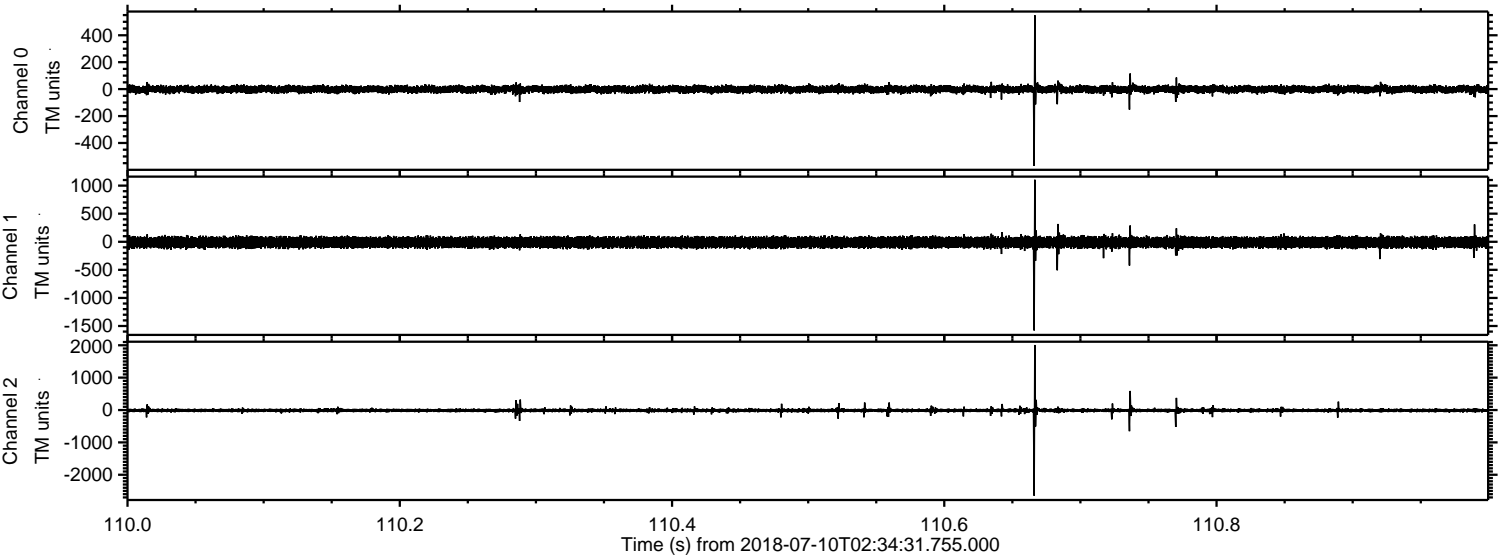
Channel 1  
mn: -182  
mx: 208  
 $\mu$ : -10.7  
 $\sigma$ : 46.0

Channel 2  
mn: -2734  
mx: 1518  
 $\mu$ : -12.5  
 $\sigma$ : 37.7



ELMAVAN 3D WAVEFORMS (Measured data sampled at 50 kHz) 50999 packets of 144 samples from 2018-07-10T02:34:31.755.000. Part 111/147

Processed Tue Jul 10 04:42:36 2018 by ELM ver.2012-10-06 from 001\_\_elm20180710\_023430\_\_dat00.bin



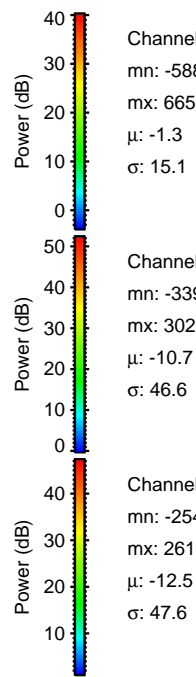
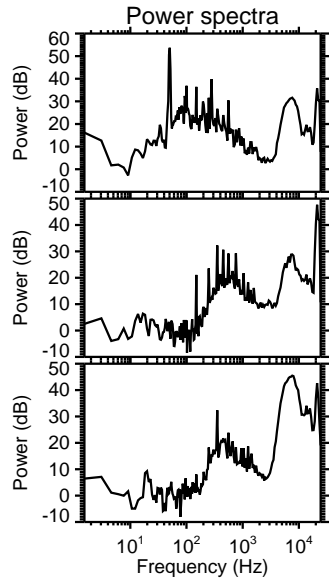
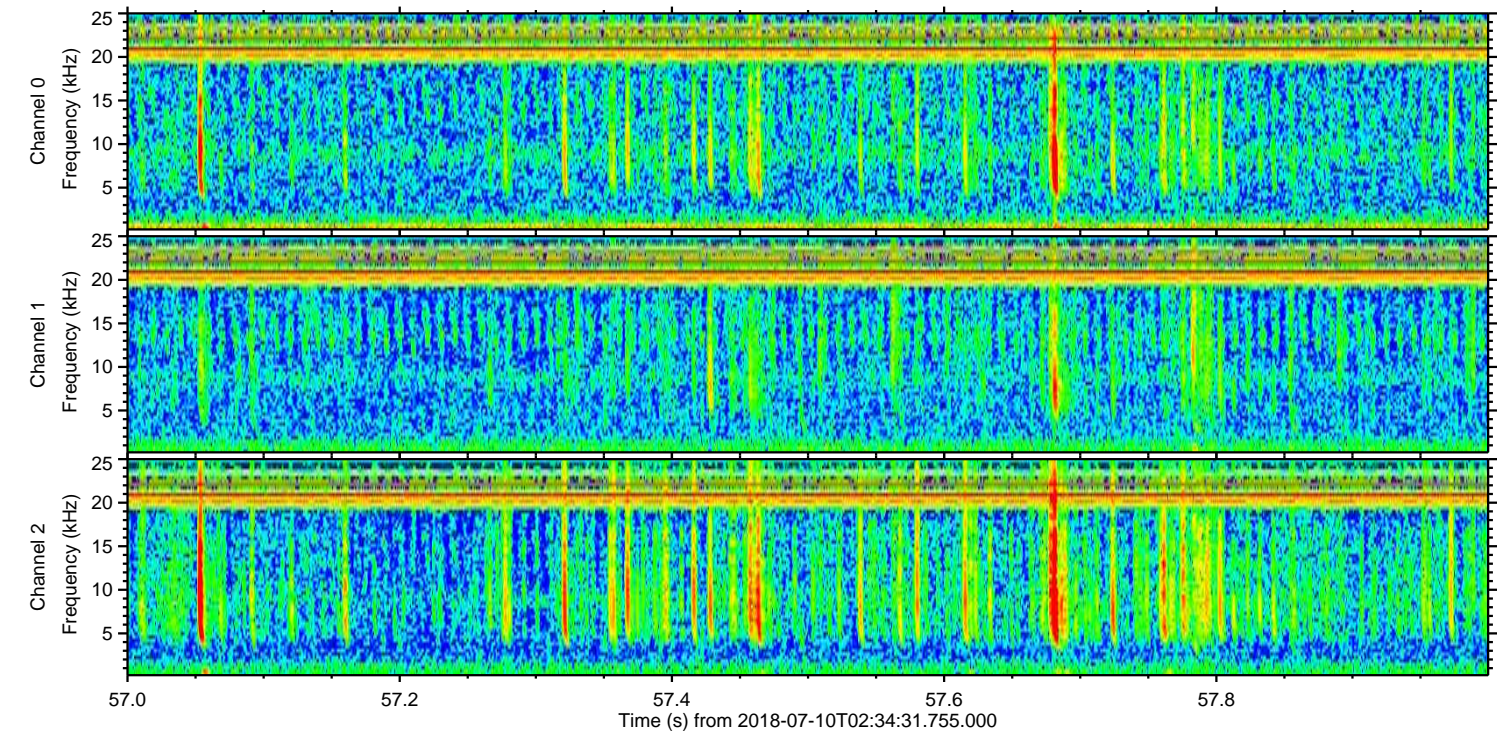
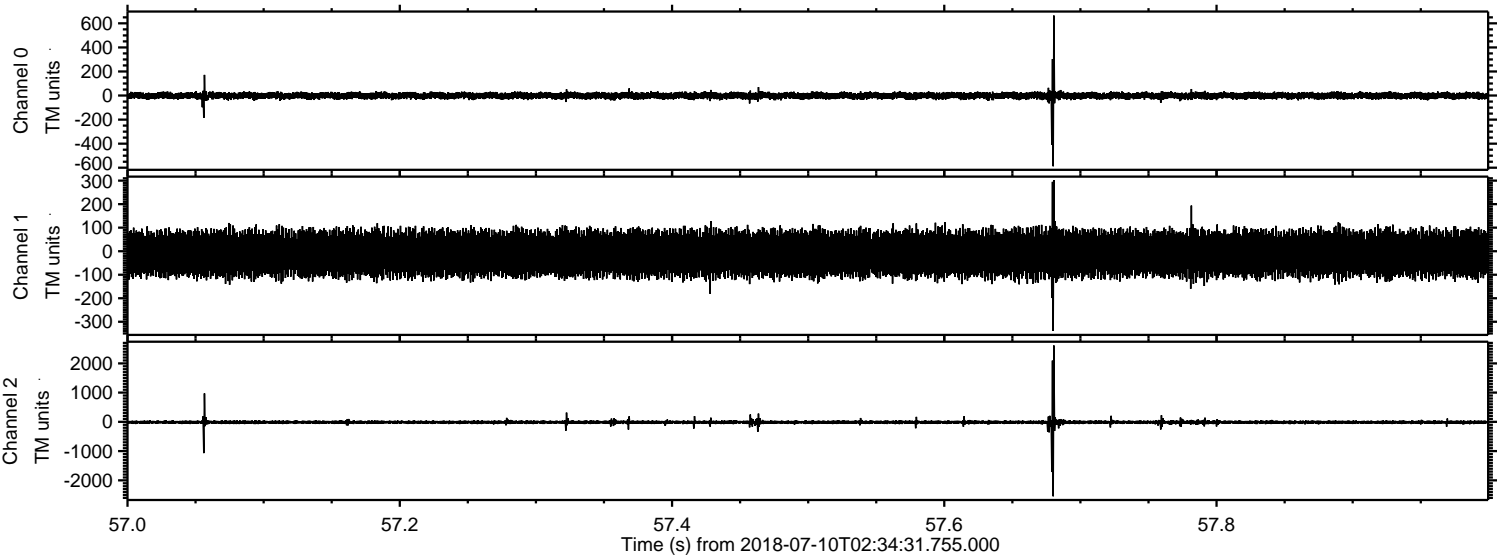
Channel 0  
mn: -571  
mx: 549  
 $\mu$ : -1.4  
 $\sigma$ : 14.7

Channel 1  
mn: -1580  
mx: 1105  
 $\mu$ : -10.8  
 $\sigma$ : 50.8

Channel 2  
mn: -2647  
mx: 2009  
 $\mu$ : -12.5  
 $\sigma$ : 39.4



Processed Tue Jul 10 04:42:37 2018 by ELM ver.2012-10-06 from 001\_\_elm20180710\_023430\_\_dat00.bin



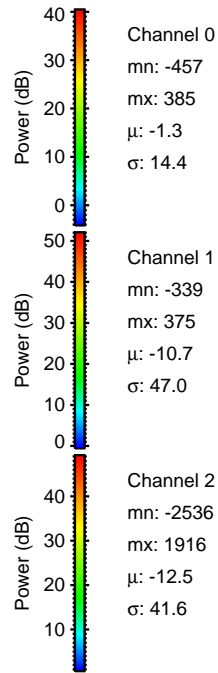
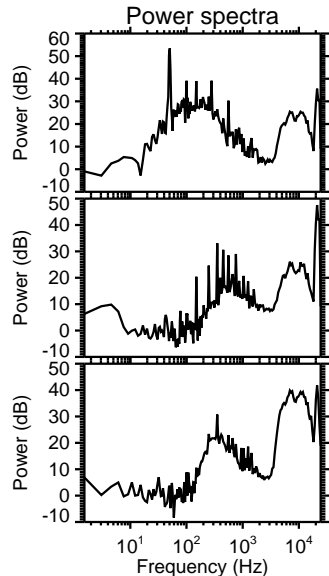
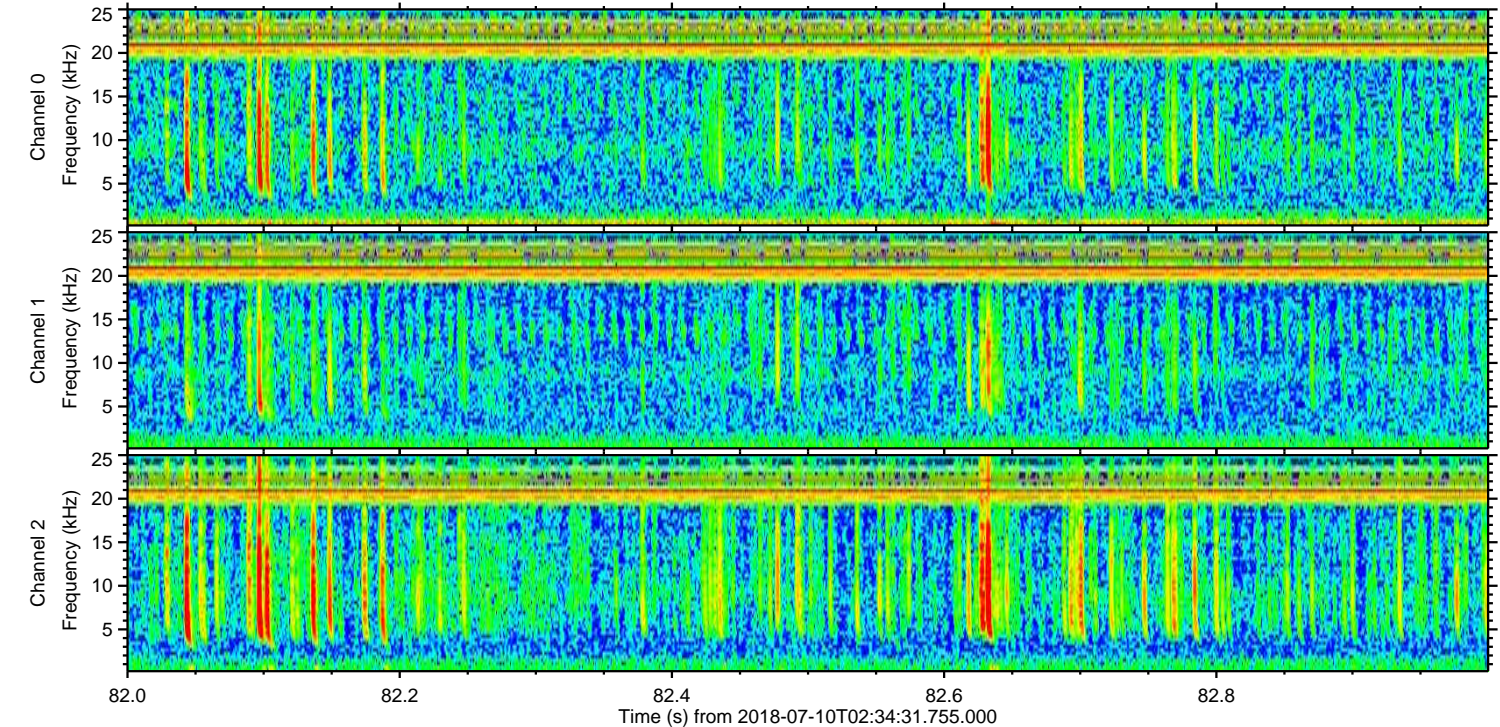
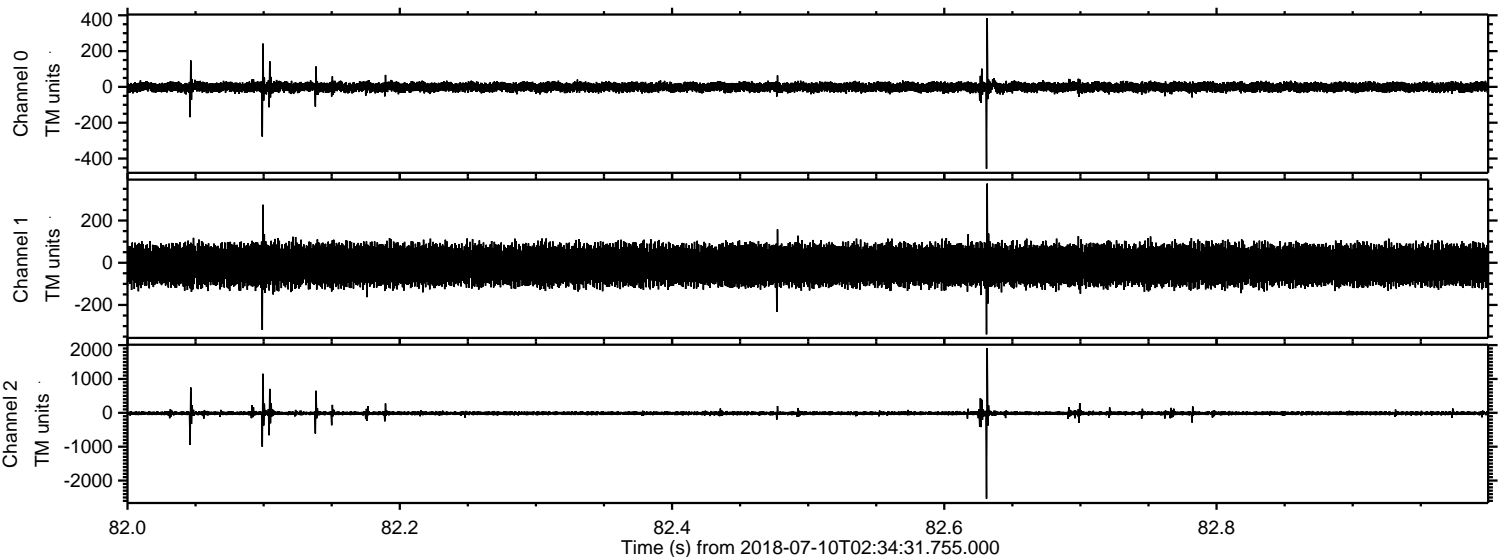
Channel 0  
mn: -588  
mx: 665  
 $\mu$ : -1.3  
 $\sigma$ : 15.1

Channel 1  
mn: -339  
mx: 302  
 $\mu$ : -10.7  
 $\sigma$ : 46.6

Channel 2  
mn: -2544  
mx: 2610  
 $\mu$ : -12.5  
 $\sigma$ : 47.6



Processed Tue Jul 10 04:42:37 2018 by ELM ver.2012-10-06 from 001\_\_elm20180710\_023430\_\_dat00.bin



Channel 0  
mn: -457  
mx: 385  
 $\mu$ : -1.3  
 $\sigma$ : 14.4

Channel 1  
mn: -339  
mx: 375  
 $\mu$ : -10.7  
 $\sigma$ : 47.0

Channel 2  
mn: -2536  
mx: 1916  
 $\mu$ : -12.5  
 $\sigma$ : 41.6



Processed Tue Jul 10 04:42:38 2018 by ELM ver.2012-10-06 from 001\_\_elm20180710\_023430\_\_dat00.bin

