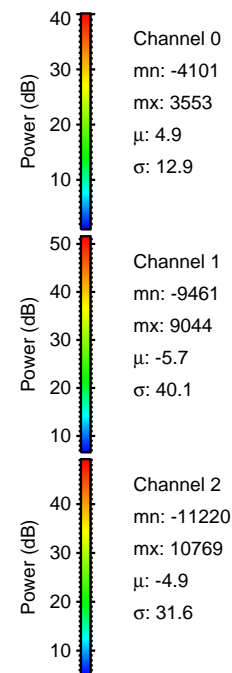
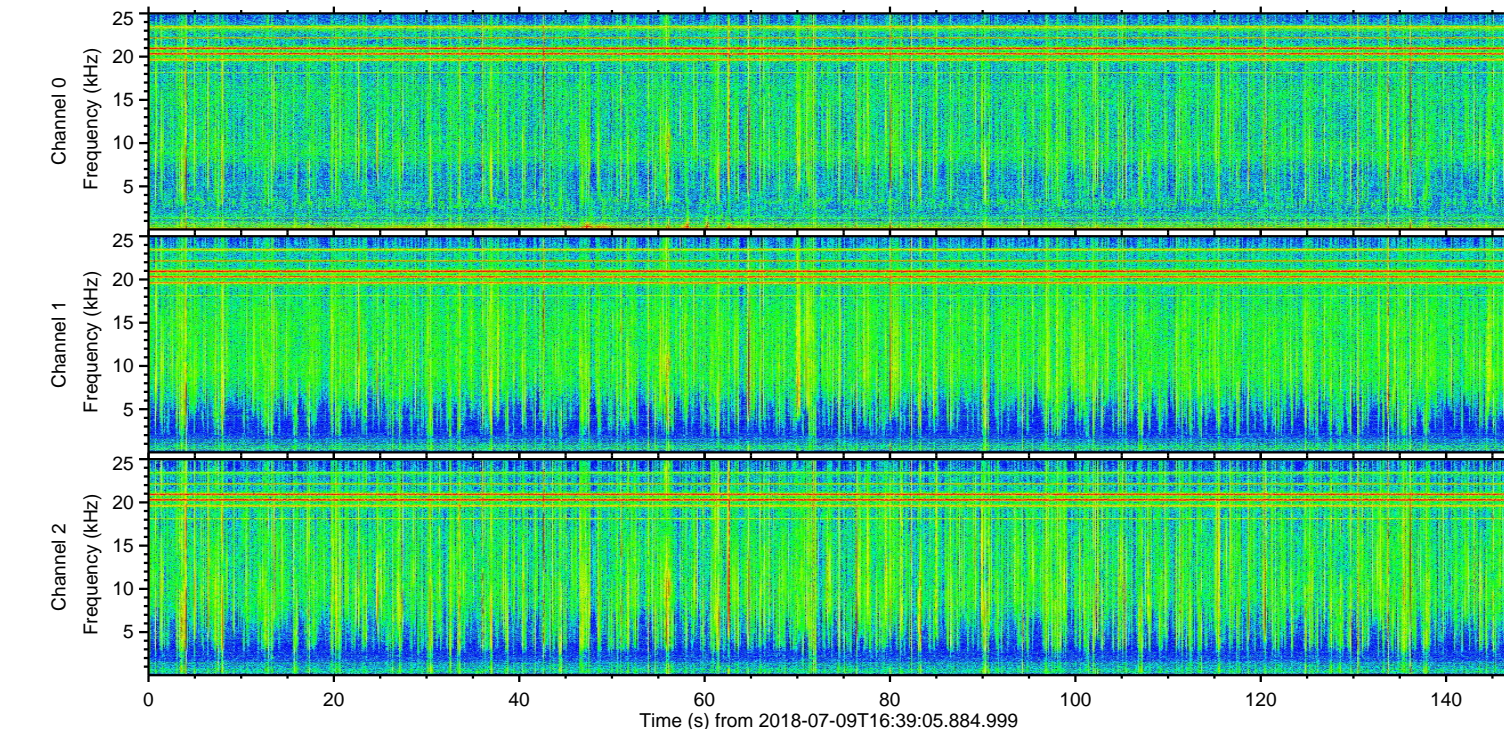
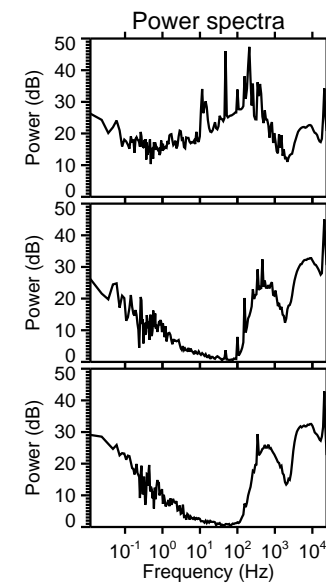
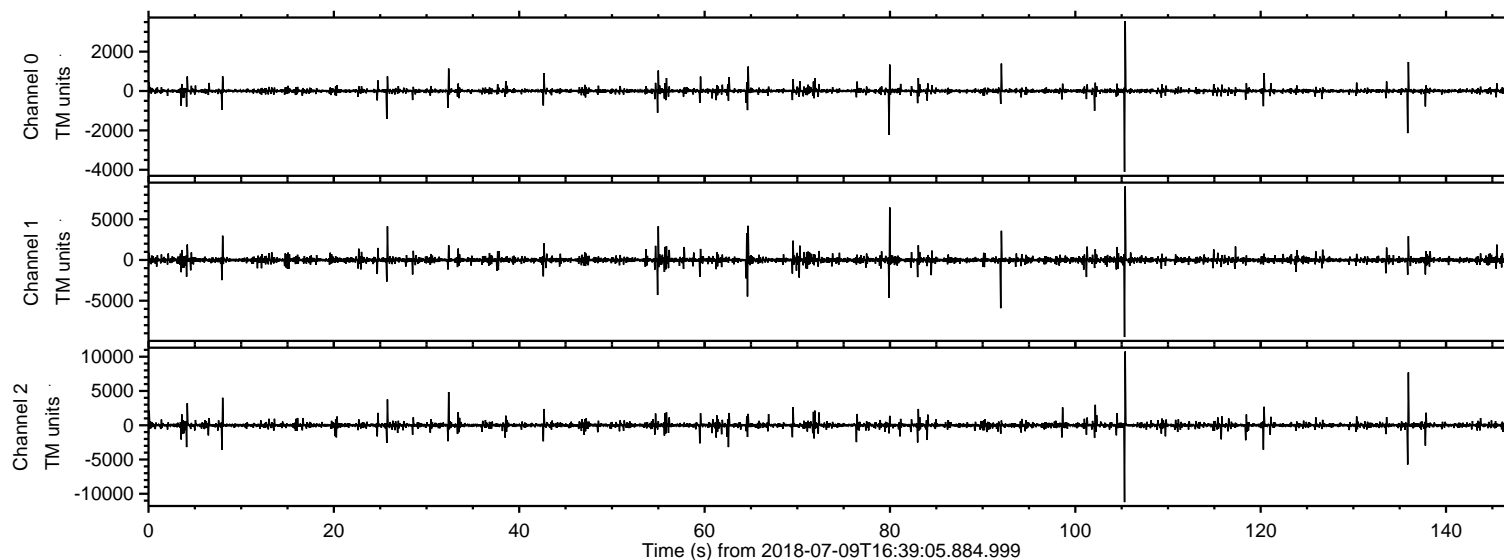


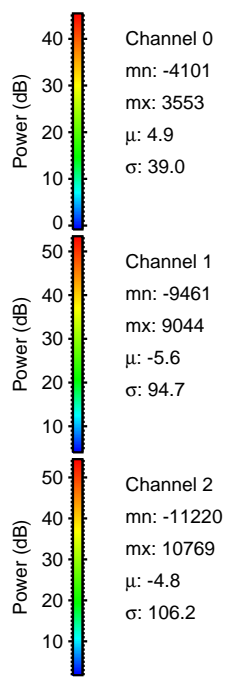
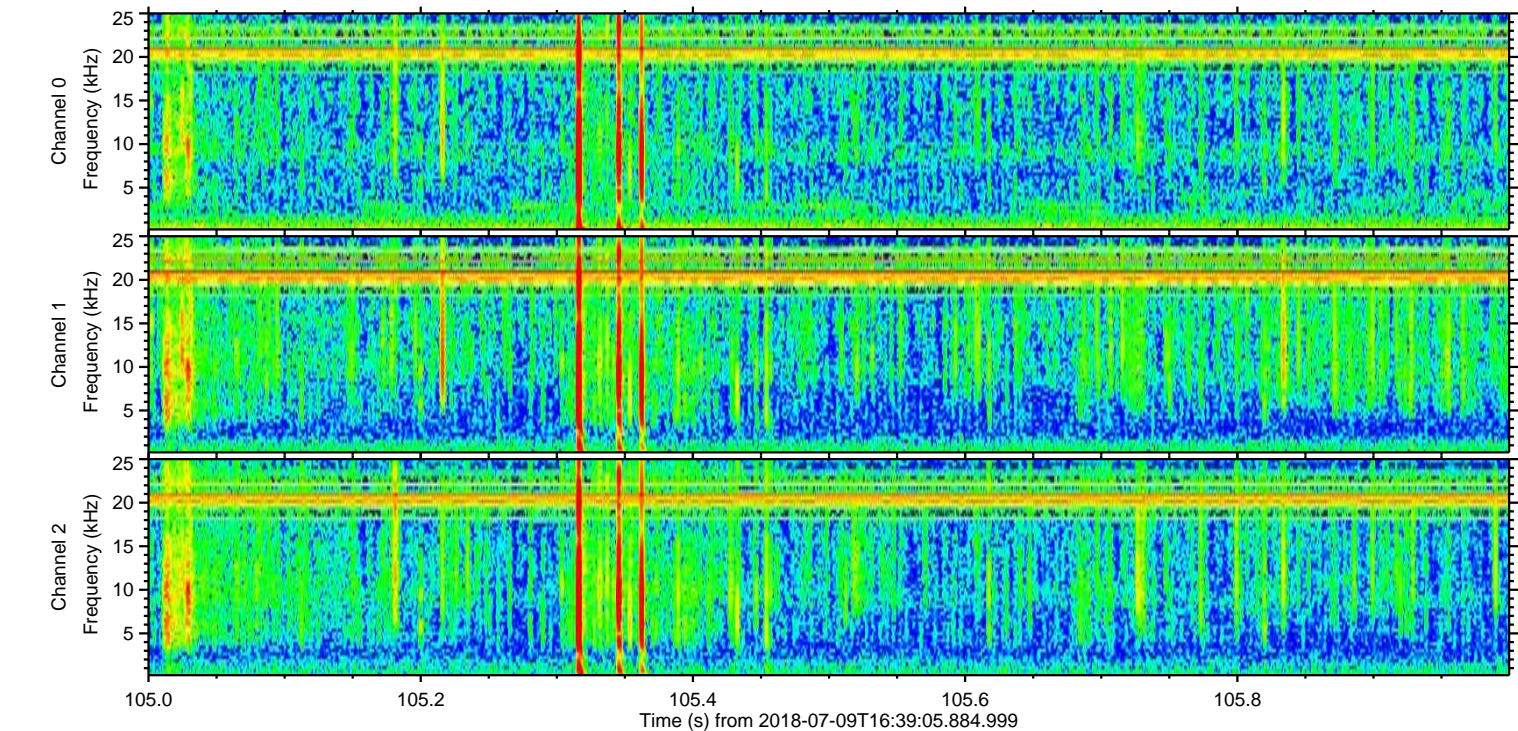
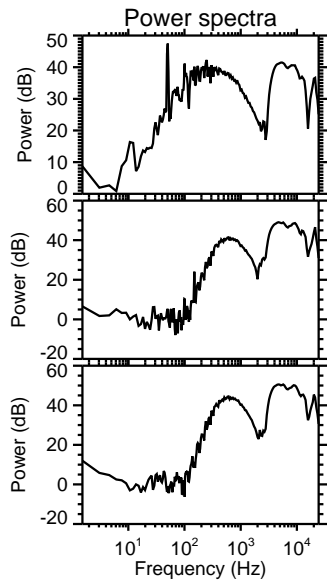
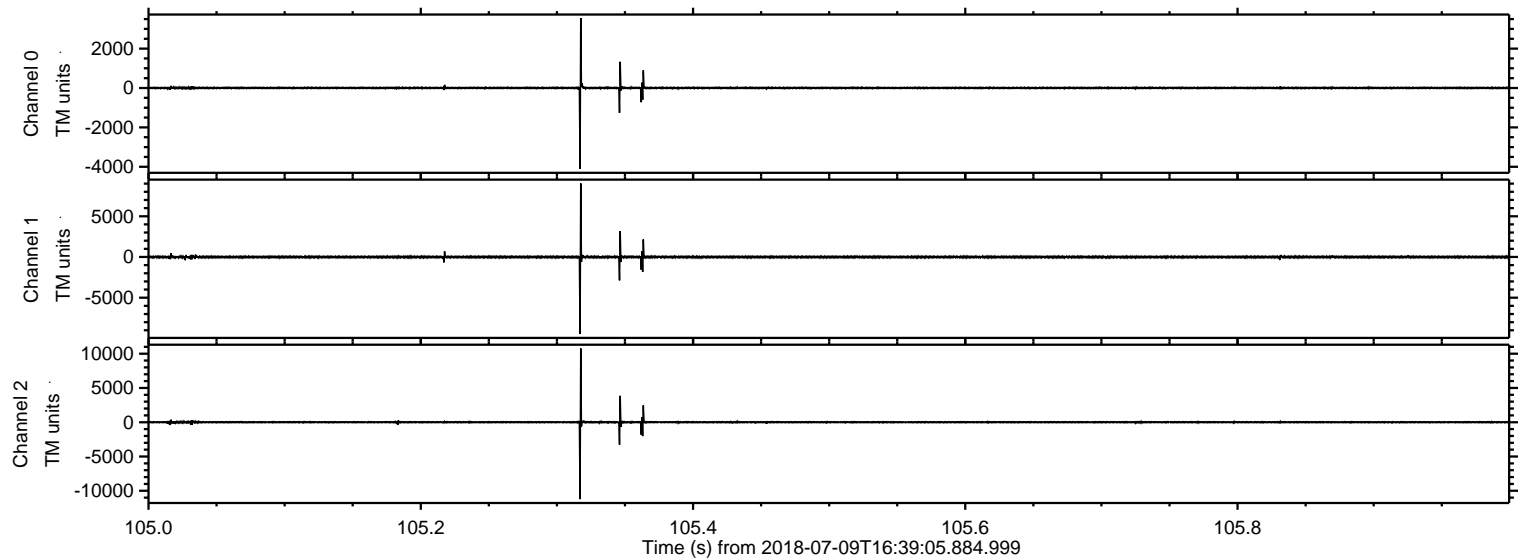
ELMAVAN 3D WAVEFORMS (Measured data sampled at 50 kHz) 51000 packets of 144 samples from 2018-07-09T16:39:05.884.999.

Processed Mon Jul 9 18:47:19 2018 by ELM ver.2012-10-06 from 001__elm20180709_163904__dat00.bin



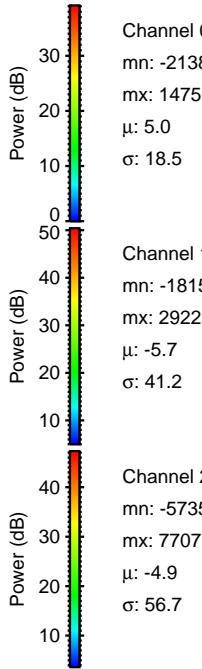
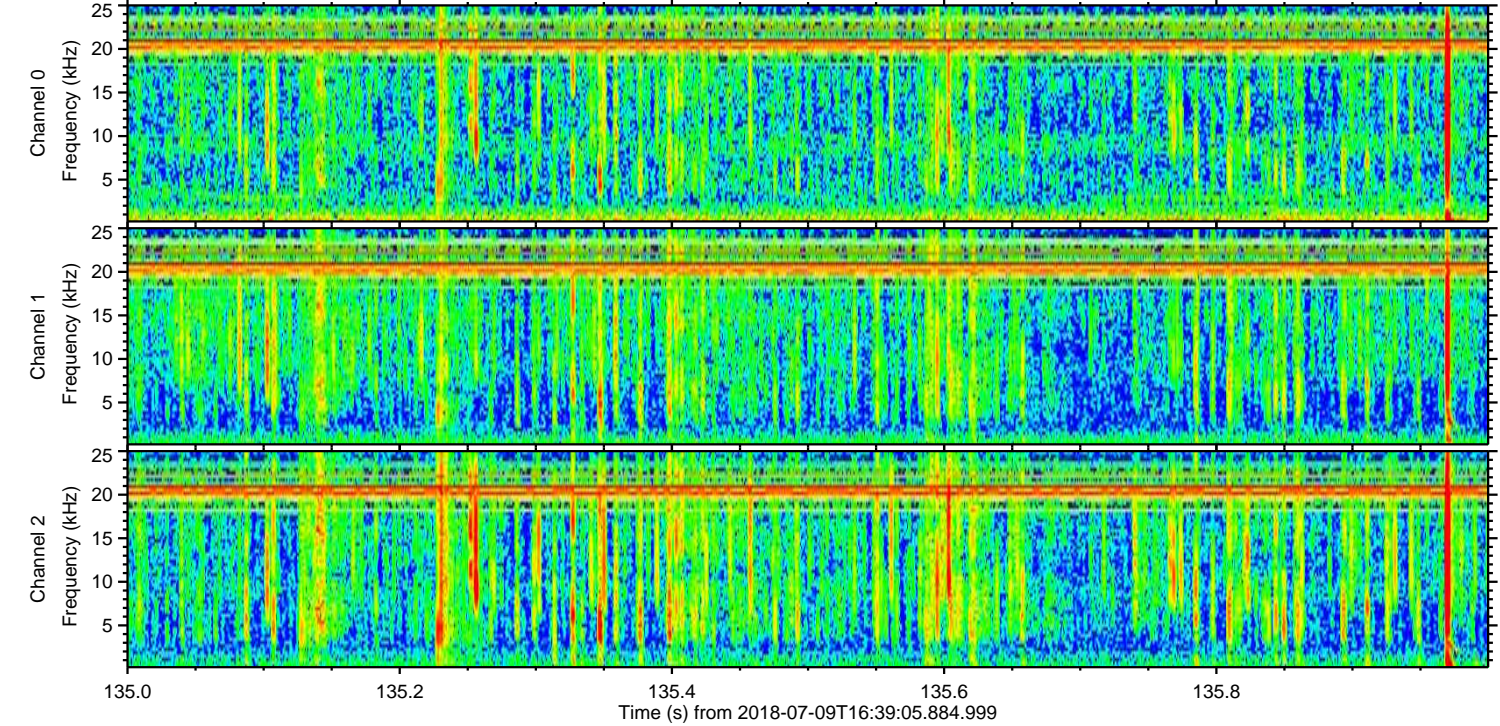
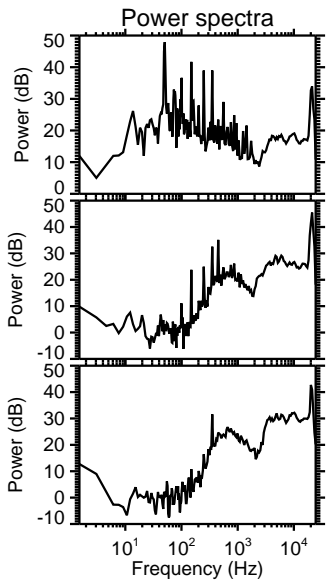
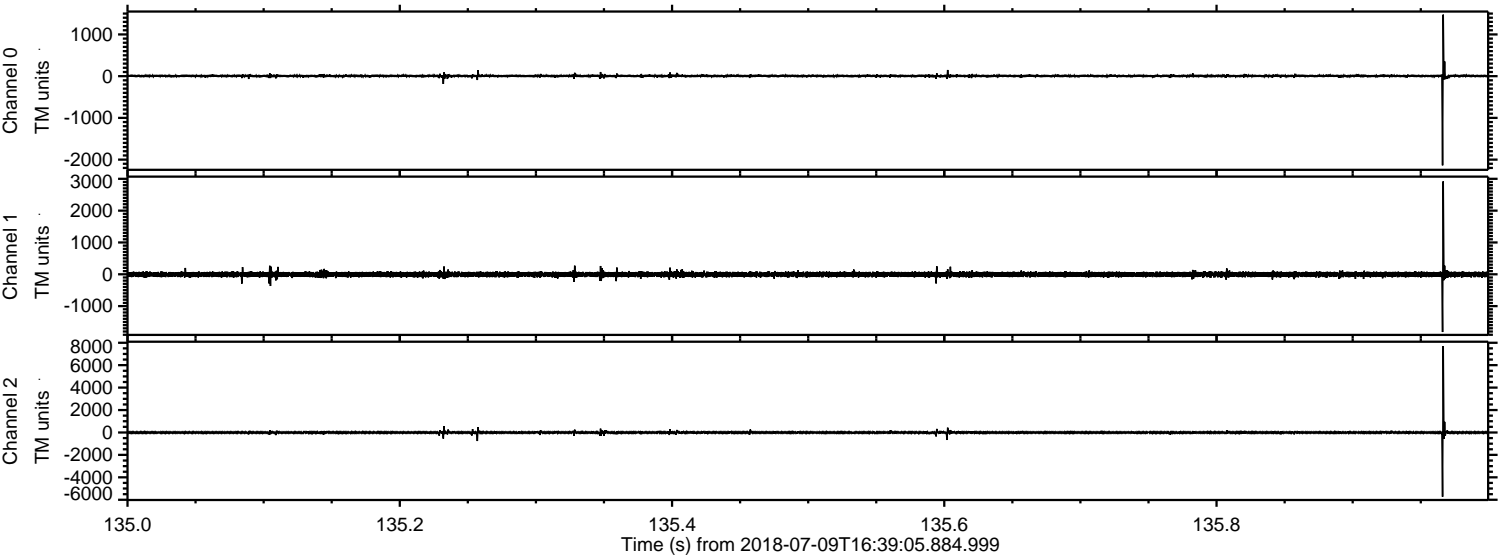
ELMAVAN 3D WAVEFORMS (Measured data sampled at 50 kHz) 51000 packets of 144 samples from 2018-07-09T16:39:05.884.999. Part 106/147

Processed Mon Jul 9 18:47:25 2018 by ELM ver.2012-10-06 from 001__elm20180709_163904__dat00.bin



ELMAVAN 3D WAVEFORMS (Measured data sampled at 50 kHz) 51000 packets of 144 samples from 2018-07-09T16:39:05.884.999. Part 136/147

Processed Mon Jul 9 18:47:26 2018 by ELM ver.2012-10-06 from 001__elm20180709_163904__dat00.bin



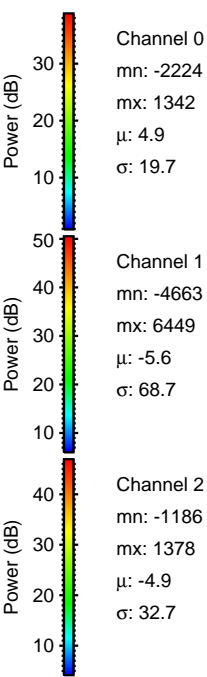
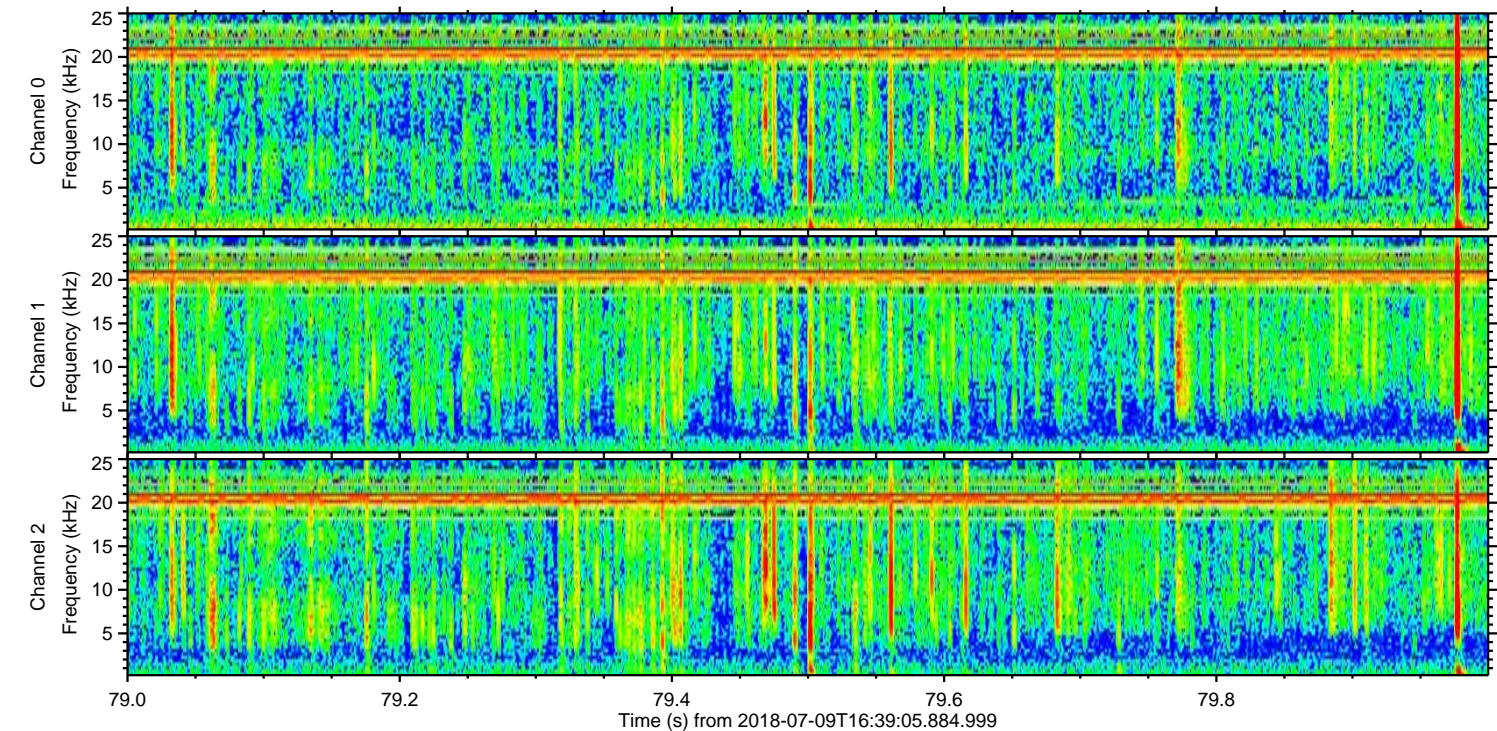
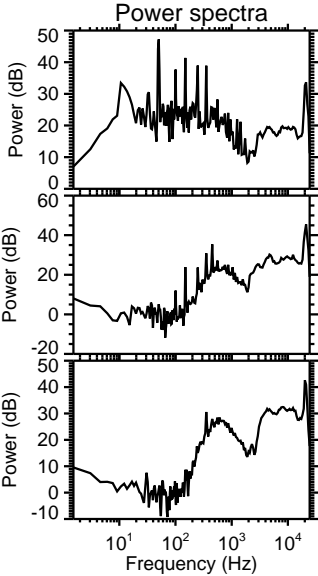
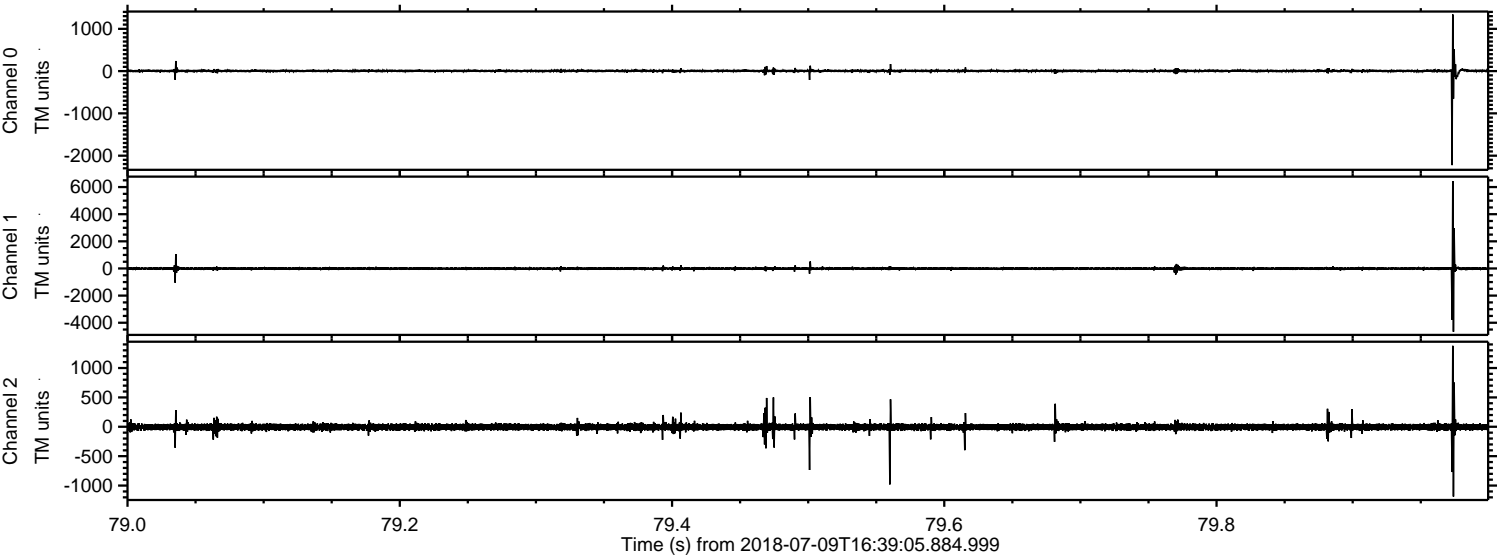
Channel 0
mn: -2138
mx: 1475
 μ : 5.0
 σ : 18.5

Channel 1
mn: -1815
mx: 2922
 μ : -5.7
 σ : 41.2

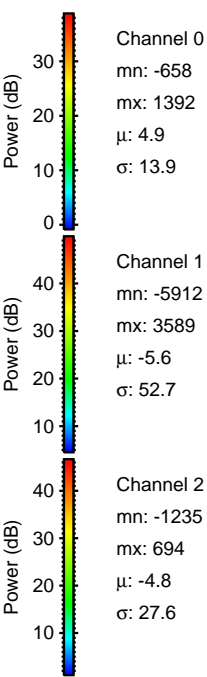
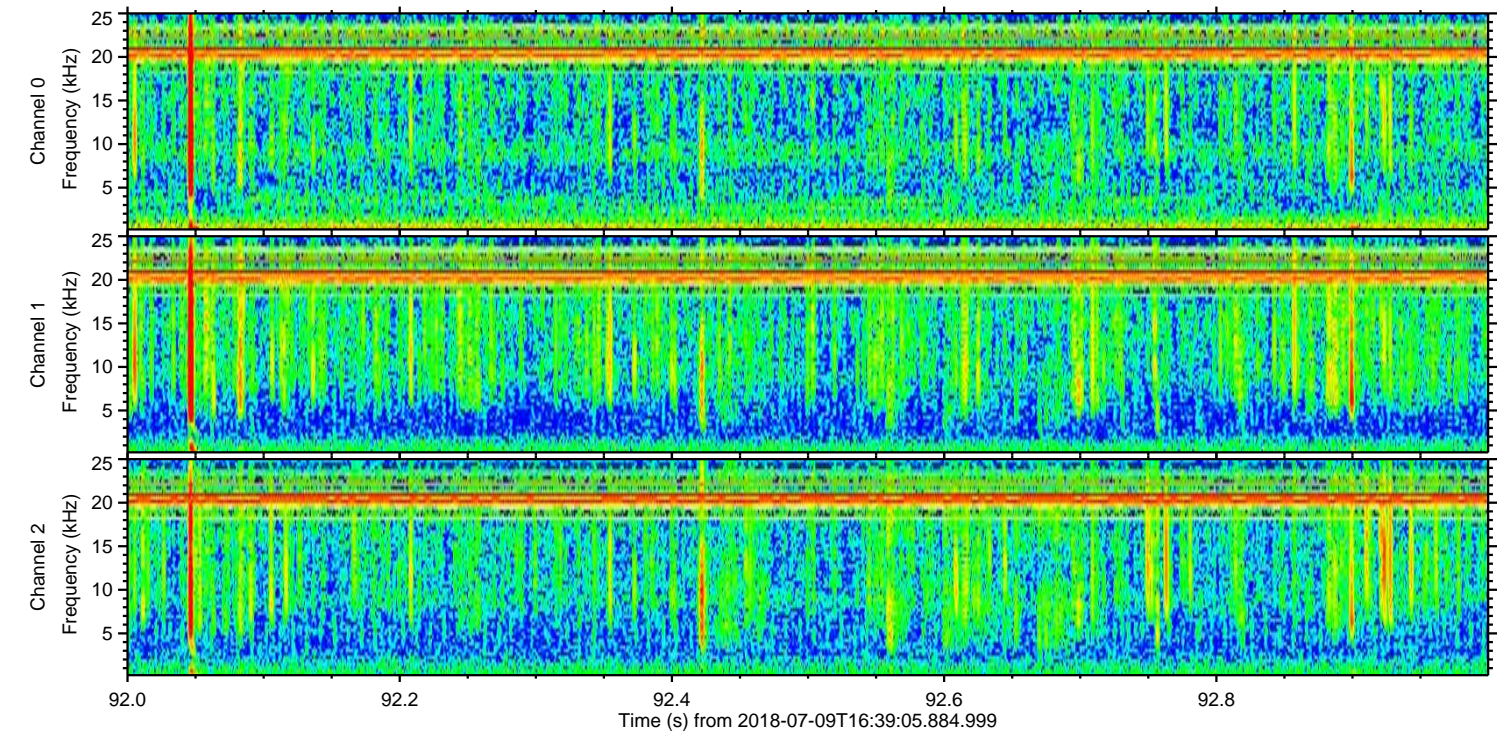
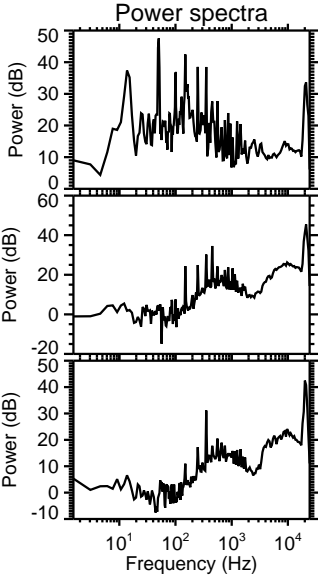
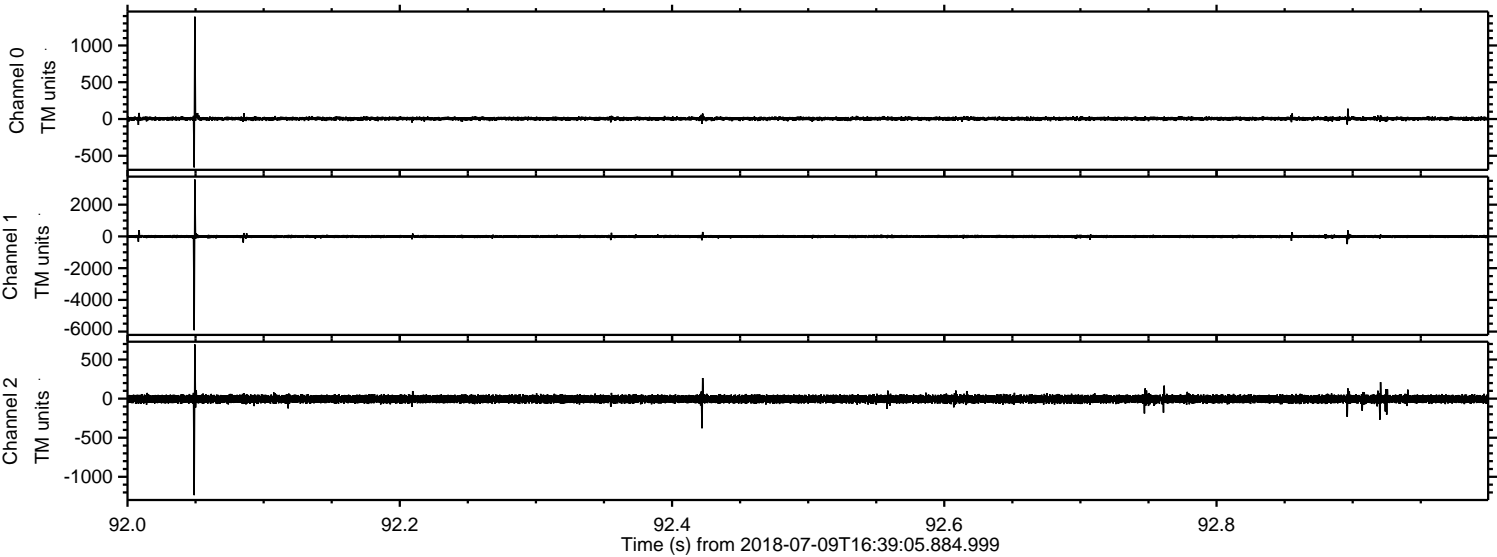
Channel 2
mn: -5735
mx: 7707
 μ : -4.9
 σ : 56.7

ELMAVAN 3D WAVEFORMS (Measured data sampled at 50 kHz) 51000 packets of 144 samples from 2018-07-09T16:39:05.884.999. Part 80/147

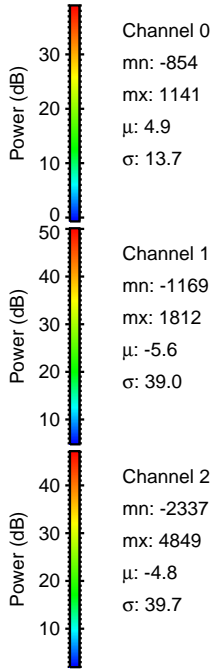
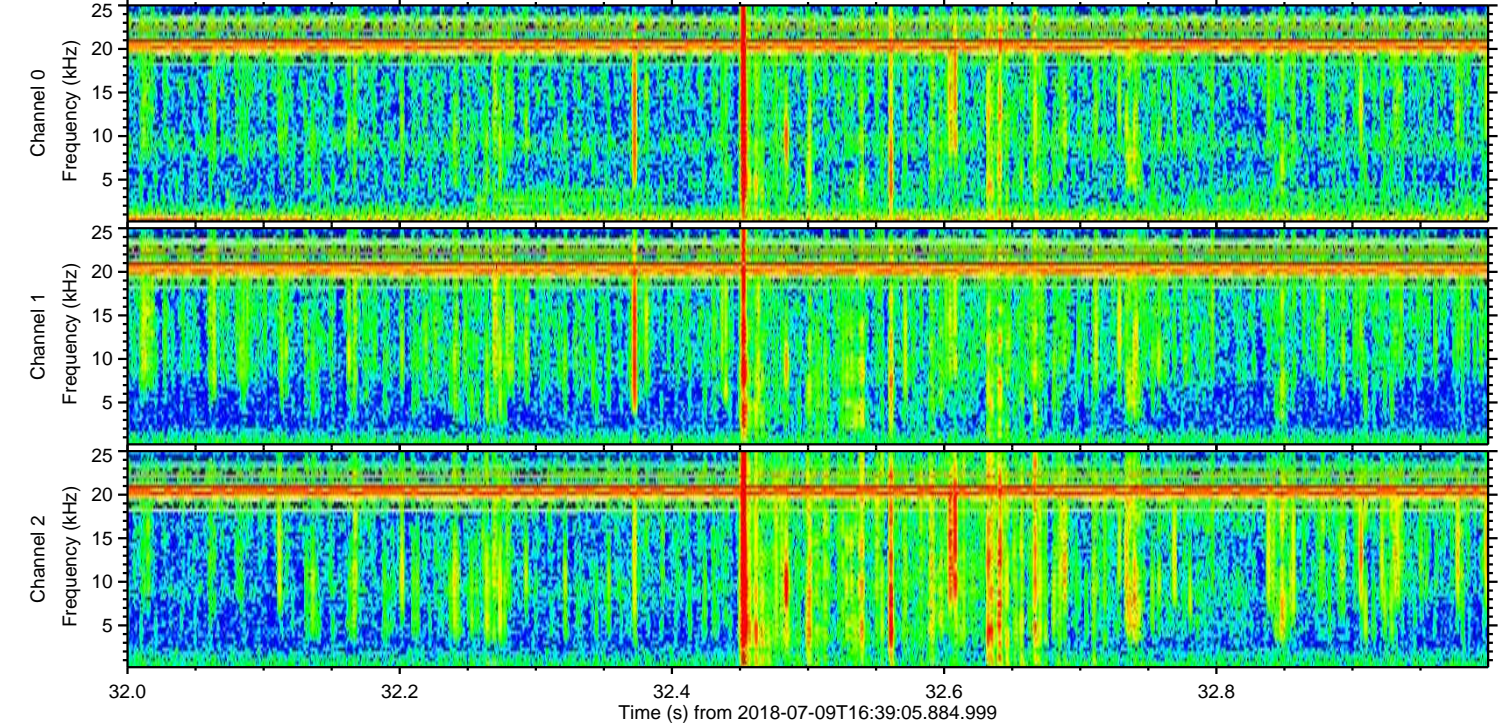
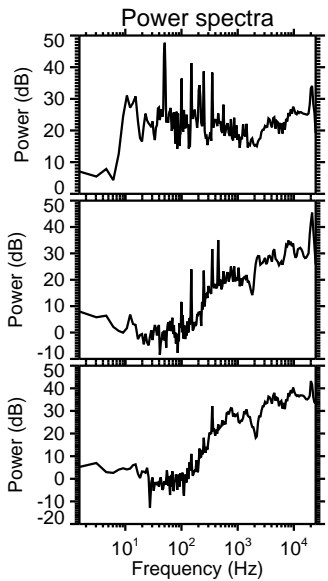
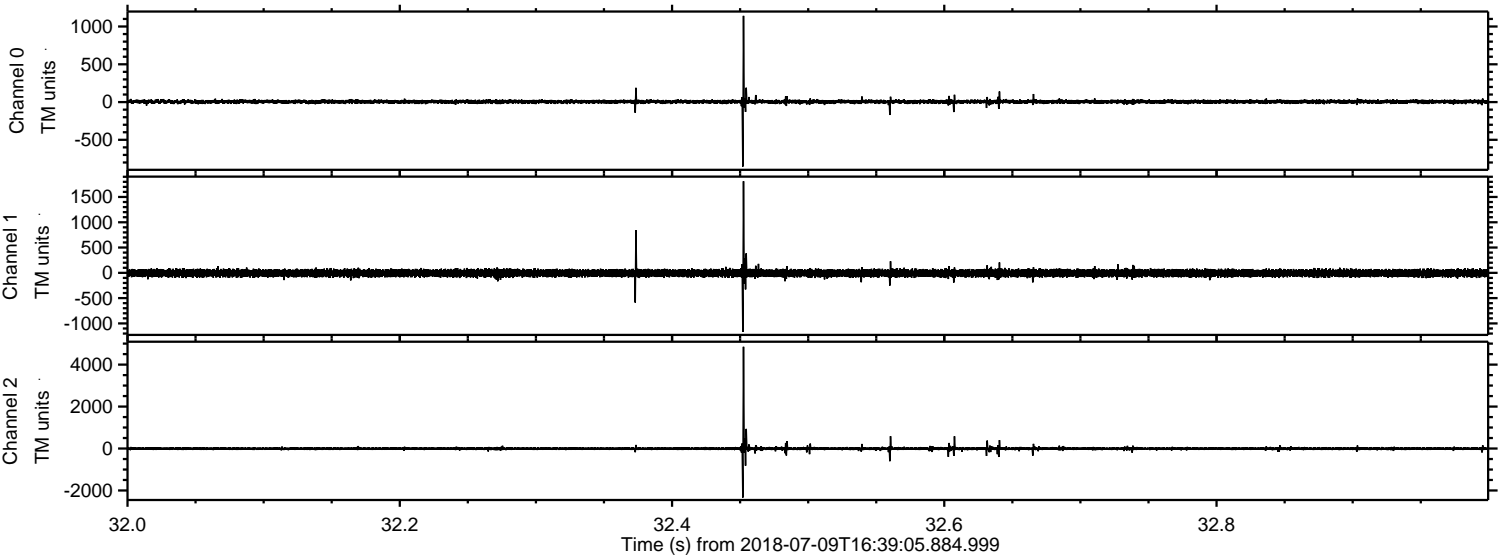
Processed Mon Jul 9 18:47:26 2018 by ELM ver.2012-10-06 from 001__elm20180709_163904__dat00.bin



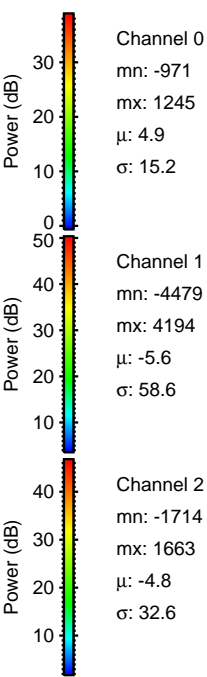
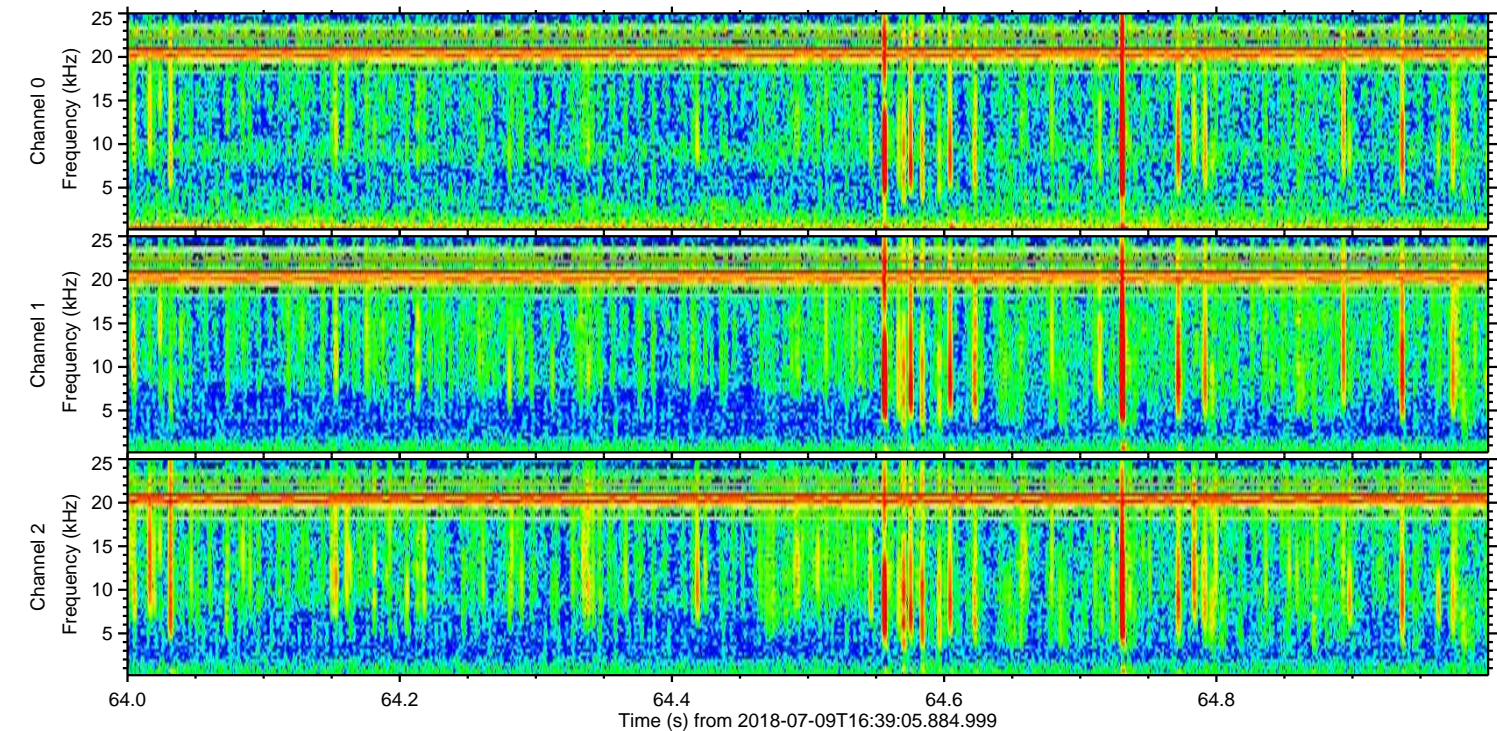
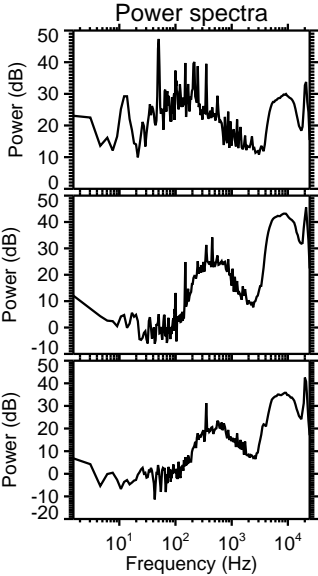
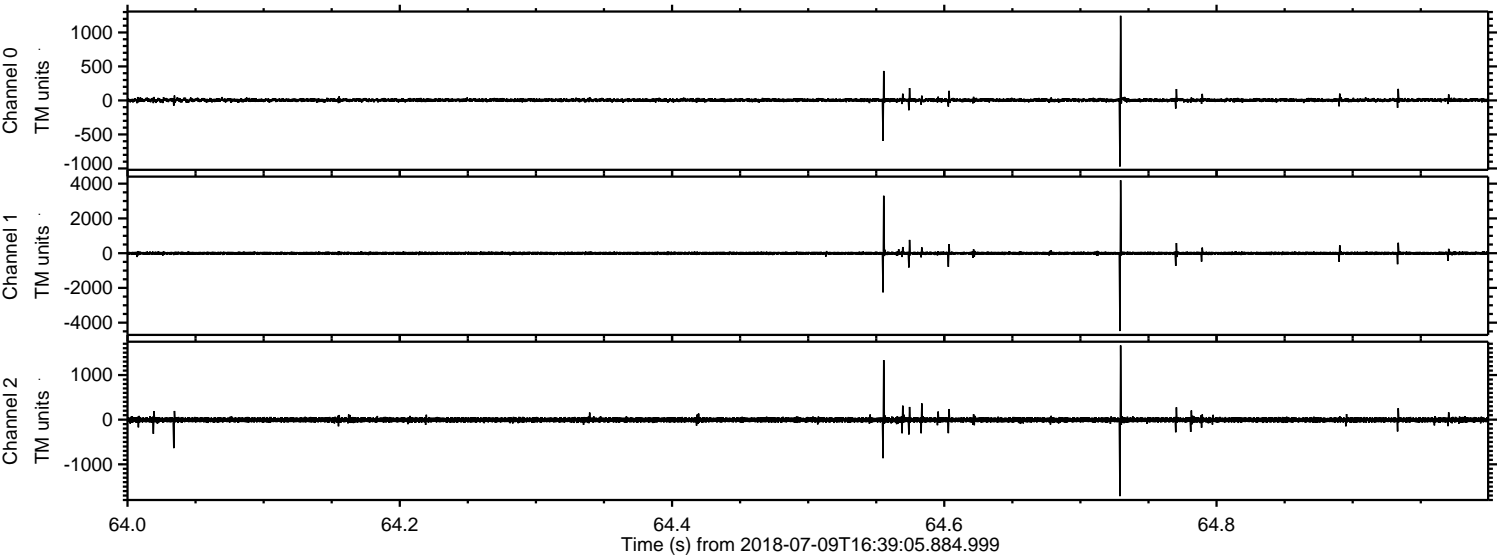
Processed Mon Jul 9 18:47:27 2018 by ELM ver.2012-10-06 from 001__elm20180709_163904__dat00.bin



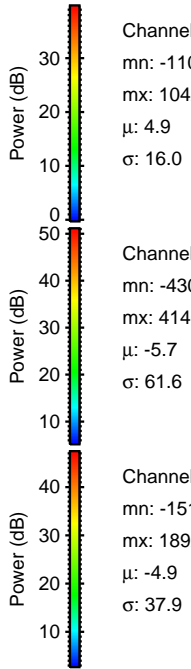
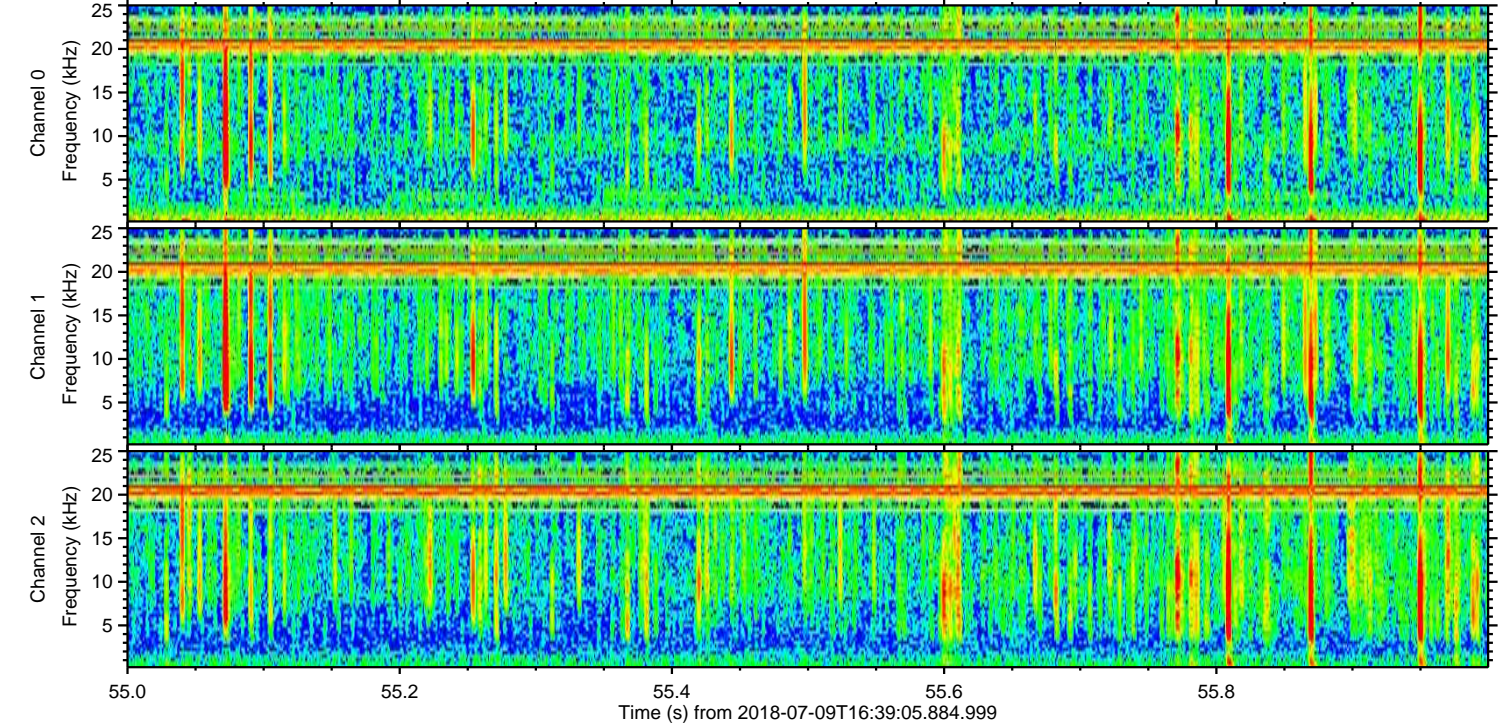
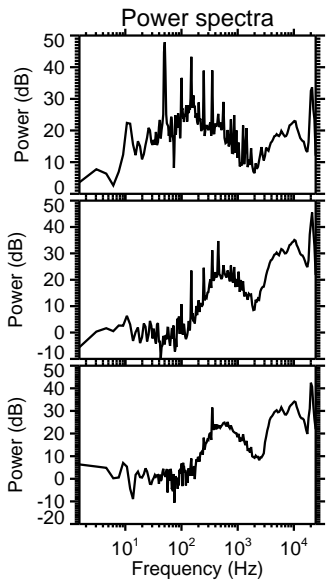
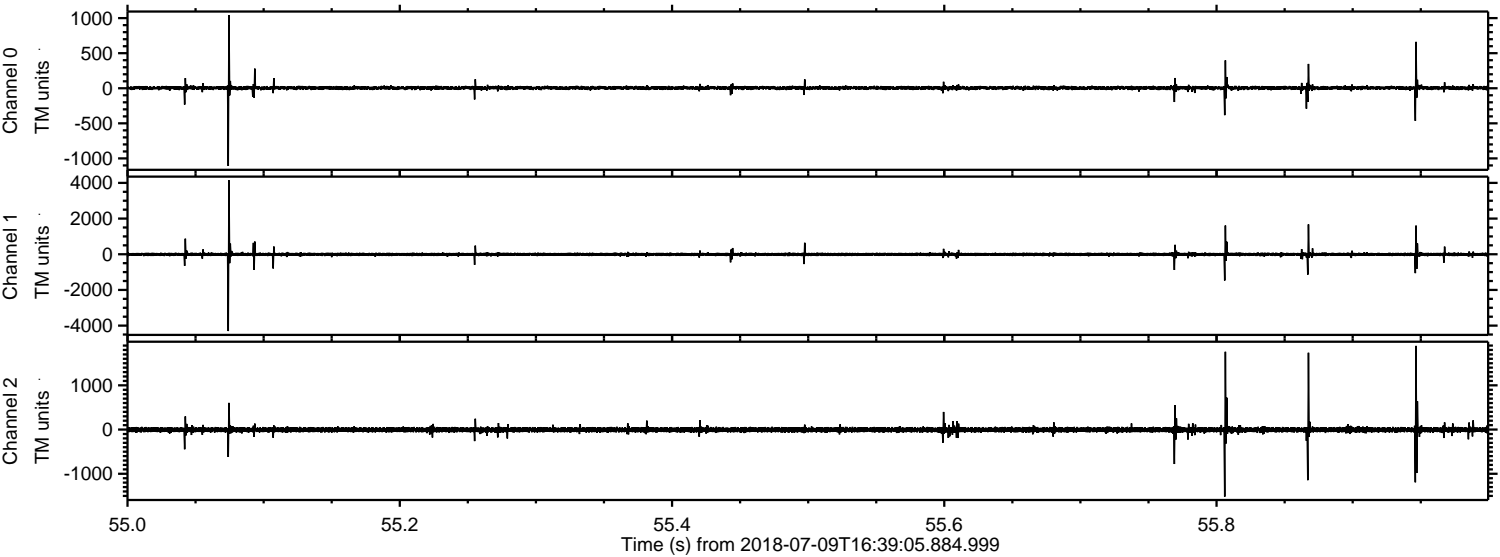
Processed Mon Jul 9 18:47:27 2018 by ELM ver.2012-10-06 from 001__elm20180709_163904__dat00.bin



Processed Mon Jul 9 18:47:28 2018 by ELM ver.2012-10-06 from 001__elm20180709_163904__dat00.bin



Processed Mon Jul 9 18:47:29 2018 by ELM ver.2012-10-06 from 001__elm20180709_163904__dat00.bin

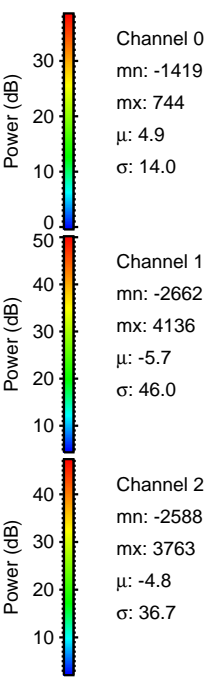
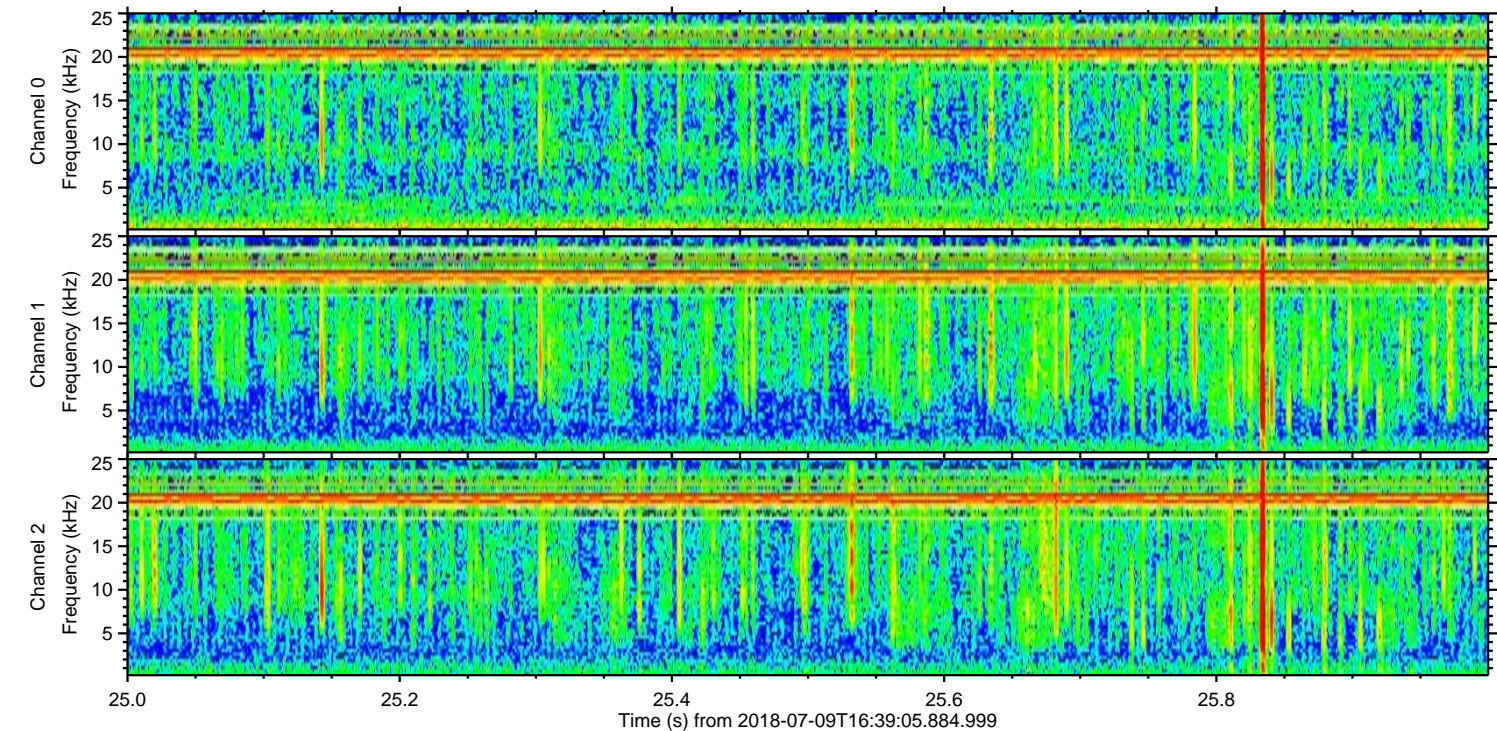
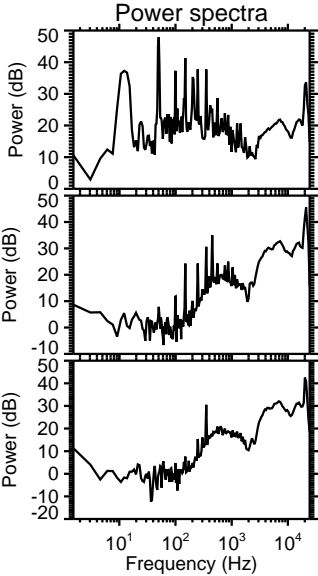
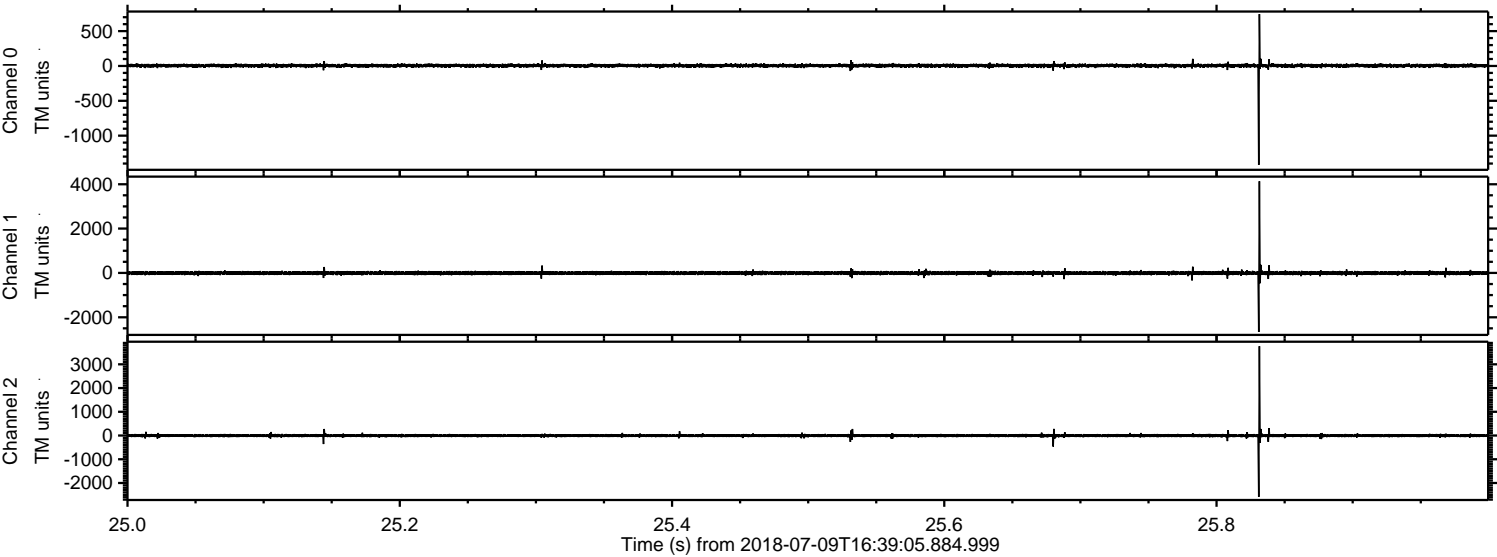


Channel 0
mn: -1107
mx: 1042
 μ : 4.9
 σ : 16.0

Channel 1
mn: -4306
mx: 4146
 μ : -5.7
 σ : 61.6

Channel 2
mn: -1517
mx: 1892
 μ : -4.9
 σ : 37.9

Processed Mon Jul 9 18:47:29 2018 by ELM ver.2012-10-06 from 001__elm20180709_163904__dat00.bin



Processed Mon Jul 9 18:47:30 2018 by ELM ver.2012-10-06 from 001__elm20180709_163904__dat00.bin

