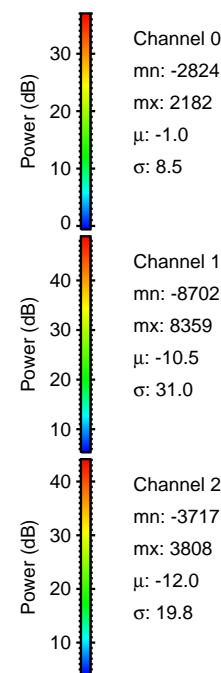
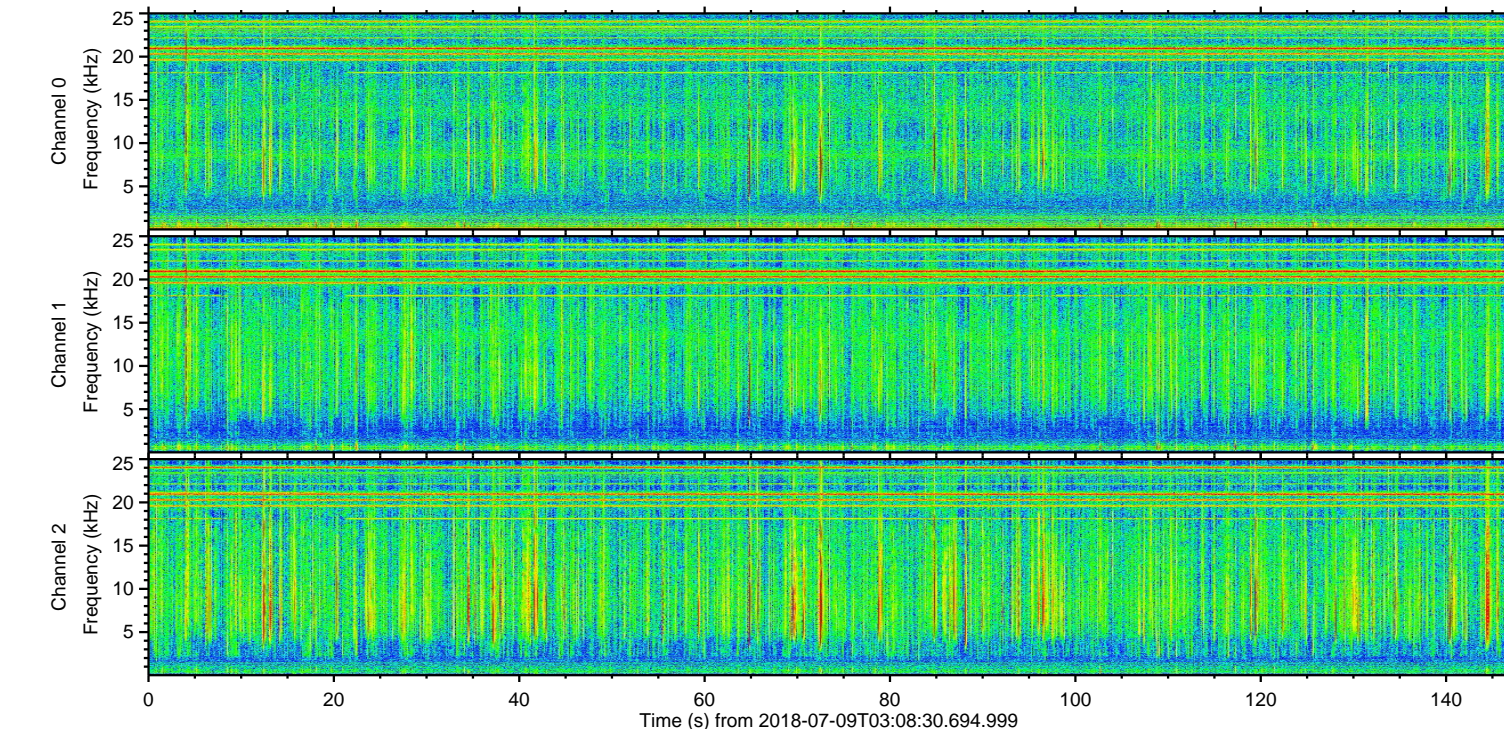
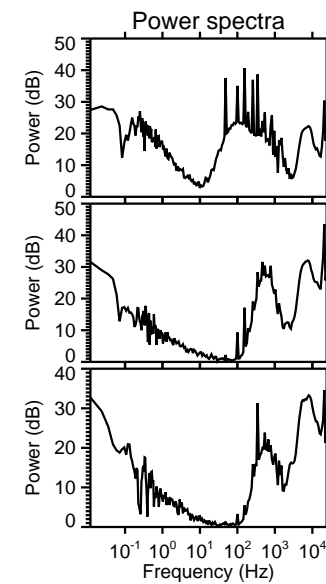
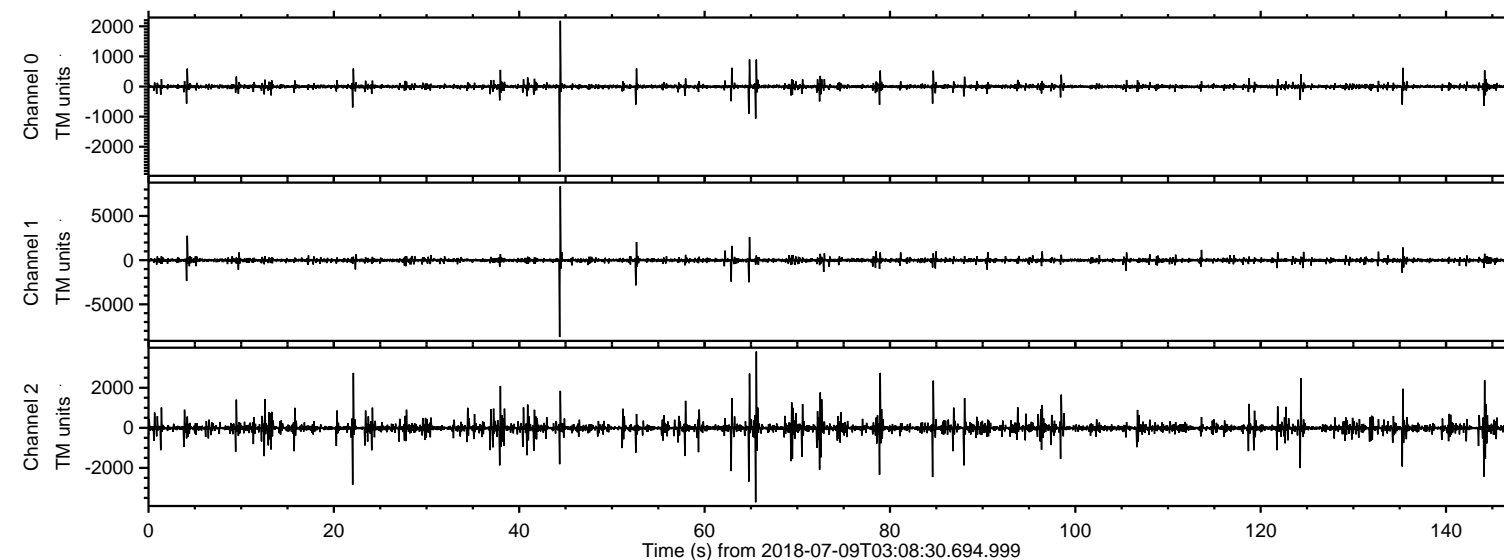


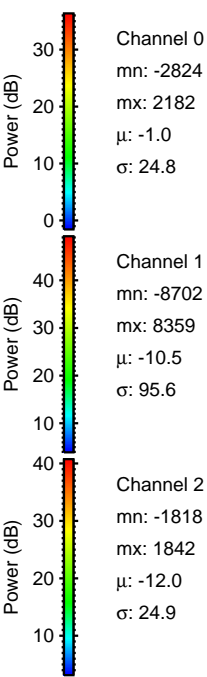
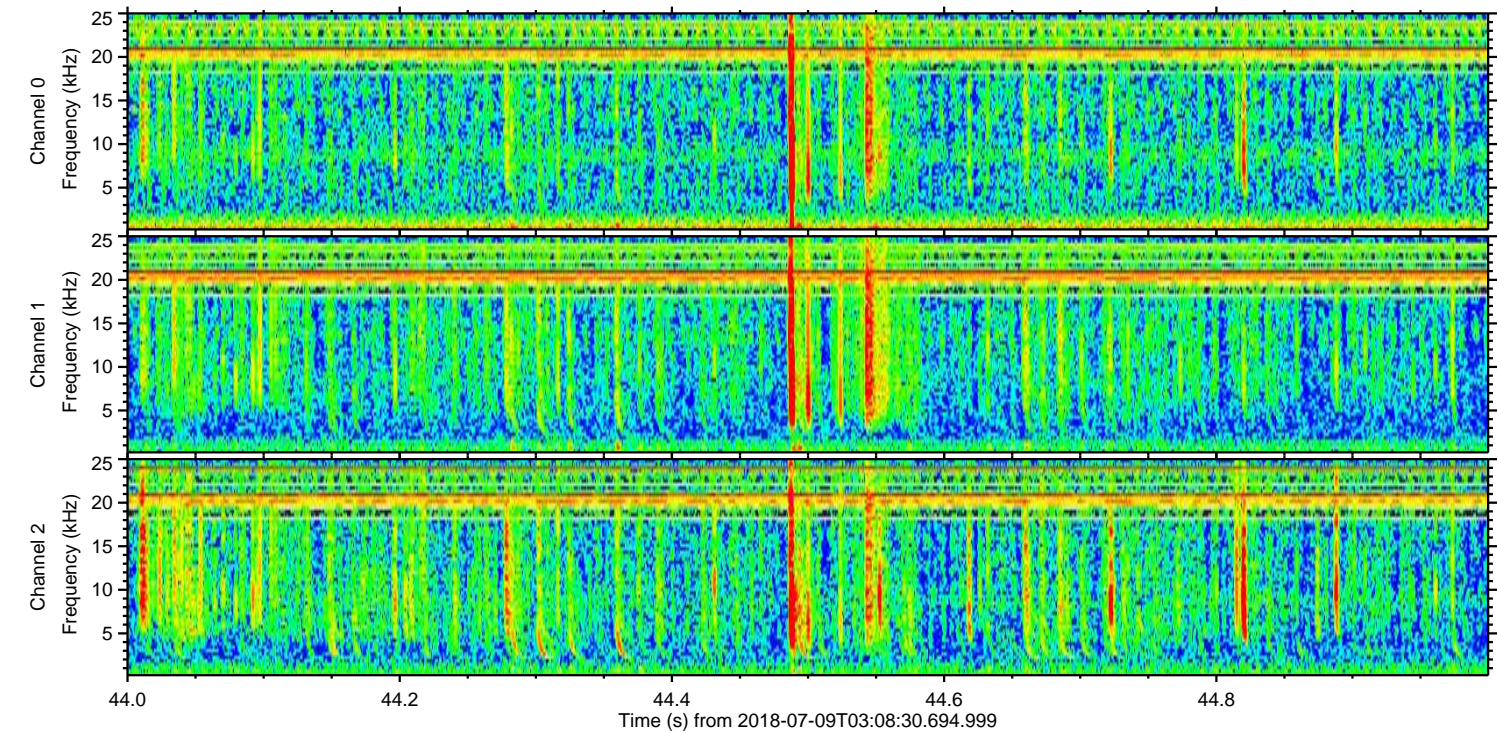
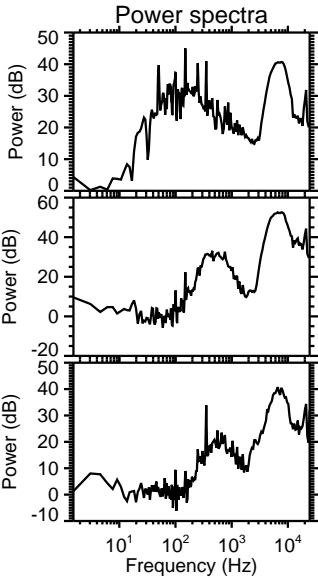
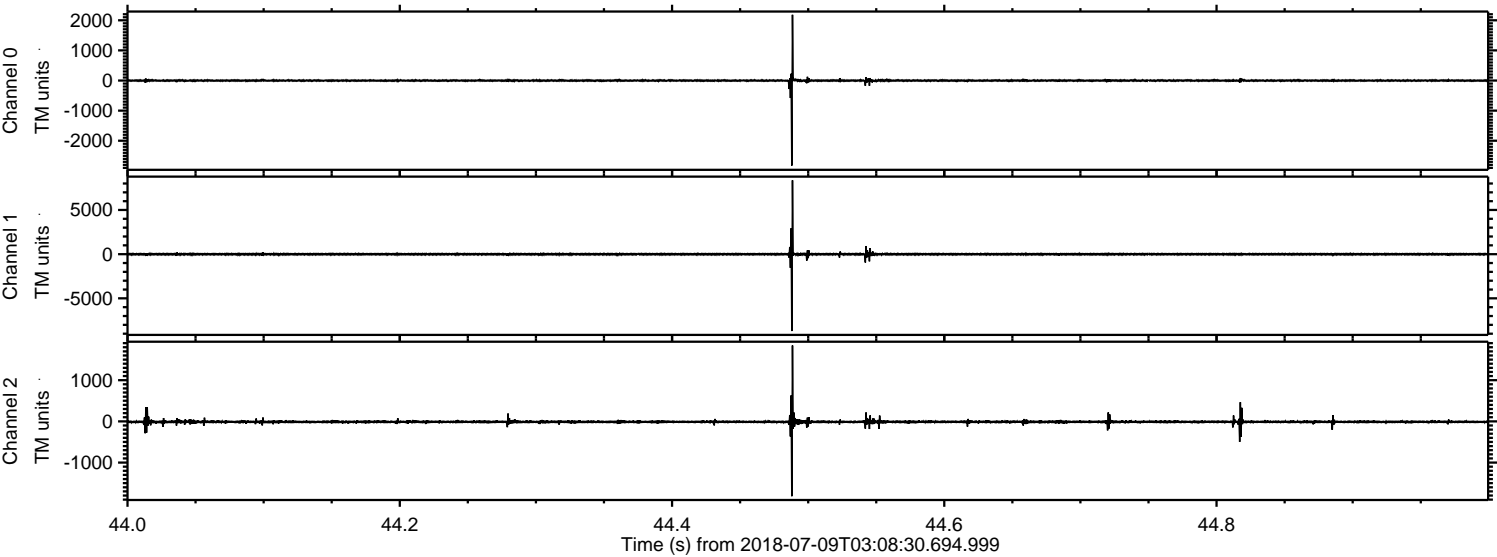
# ELMAVAN 3D WAVEFORMS (Measured data sampled at 50 kHz) 51000 packets of 144 samples from 2018-07-09T03:08:30.694.999.

Processed Mon Jul 9 05:16:06 2018 by ELM ver.2012-10-06 from 001\_\_elm20180709\_030829\_\_dat00.bin





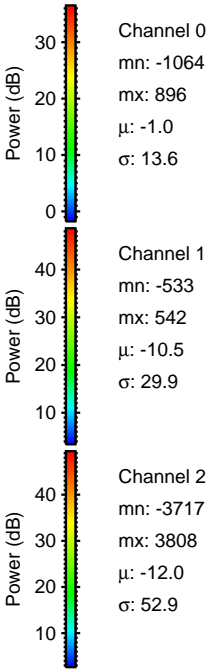
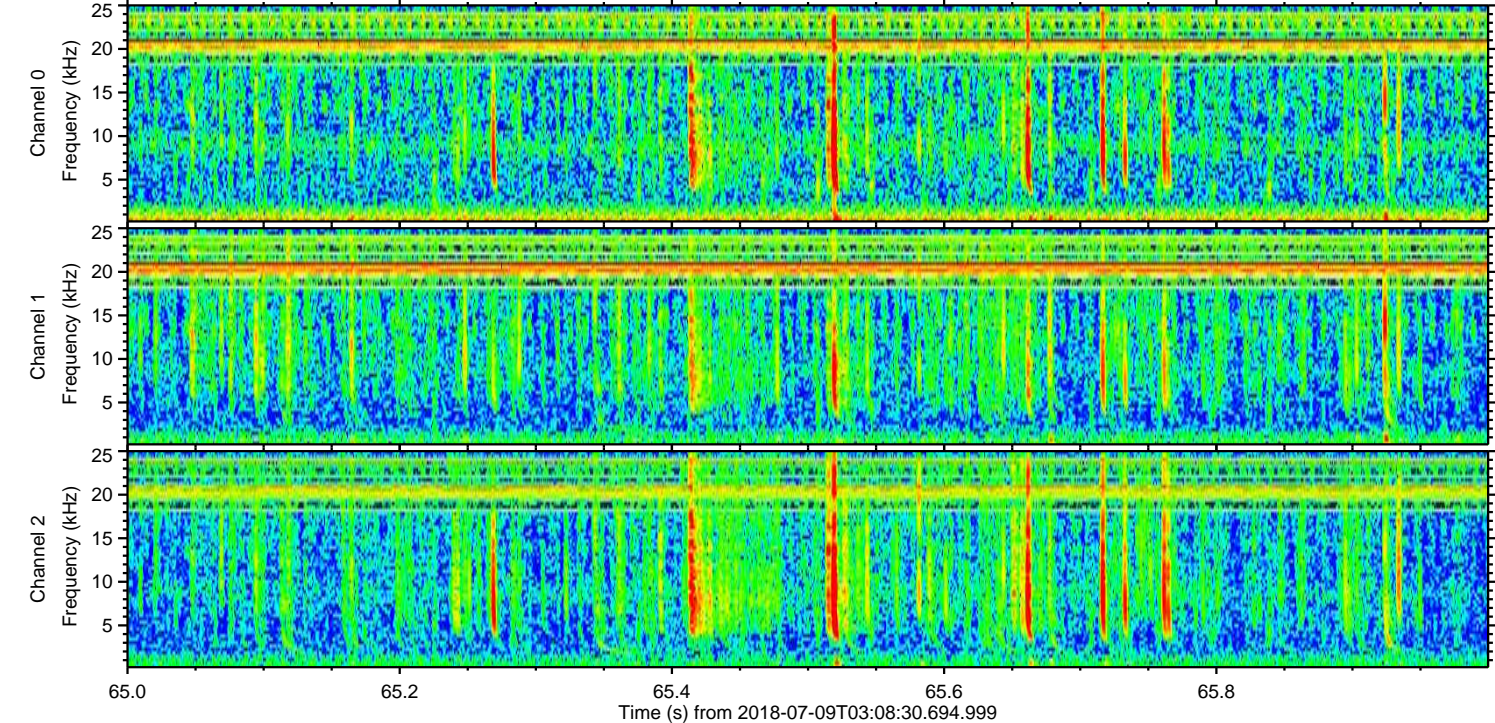
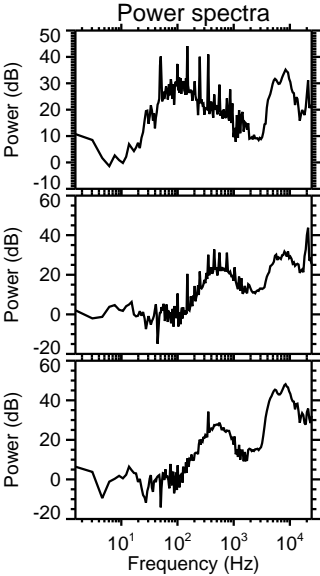
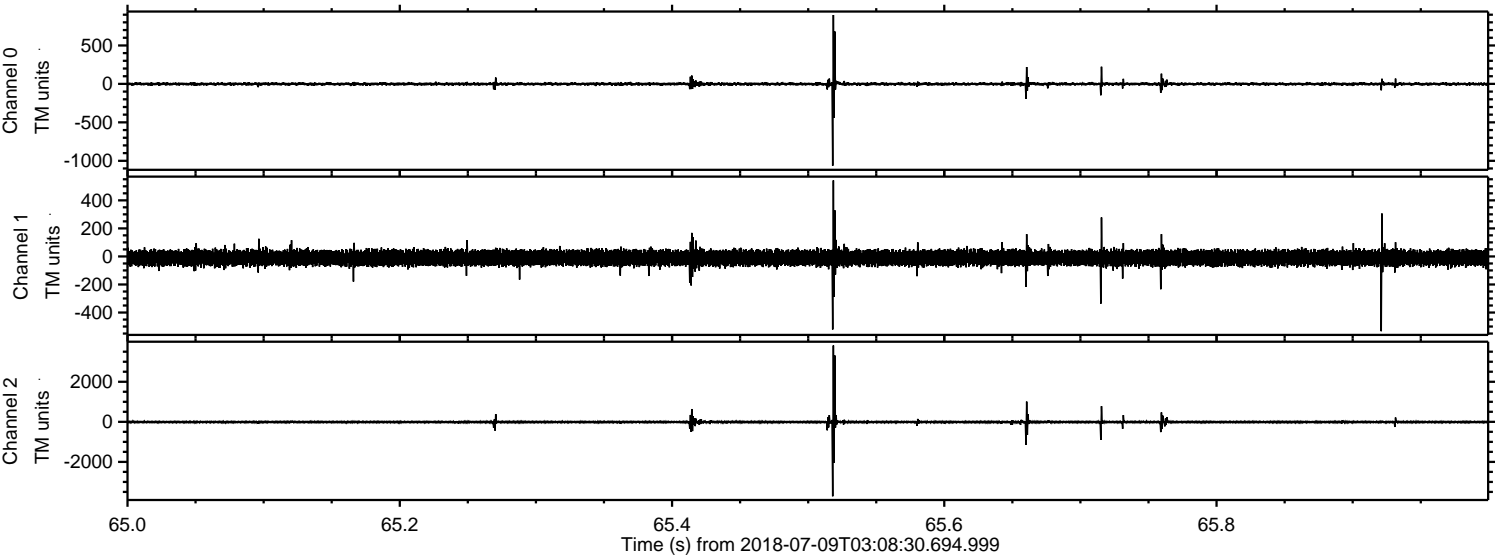
Processed Mon Jul 9 05:16:13 2018 by ELM ver.2012-10-06 from 001\_\_elm20180709\_030829\_\_dat00.bin





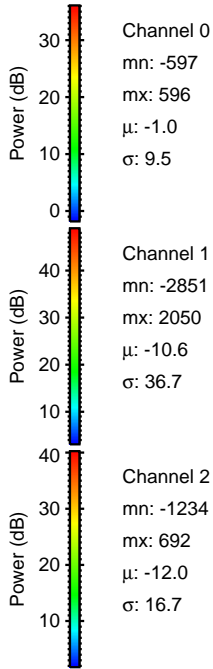
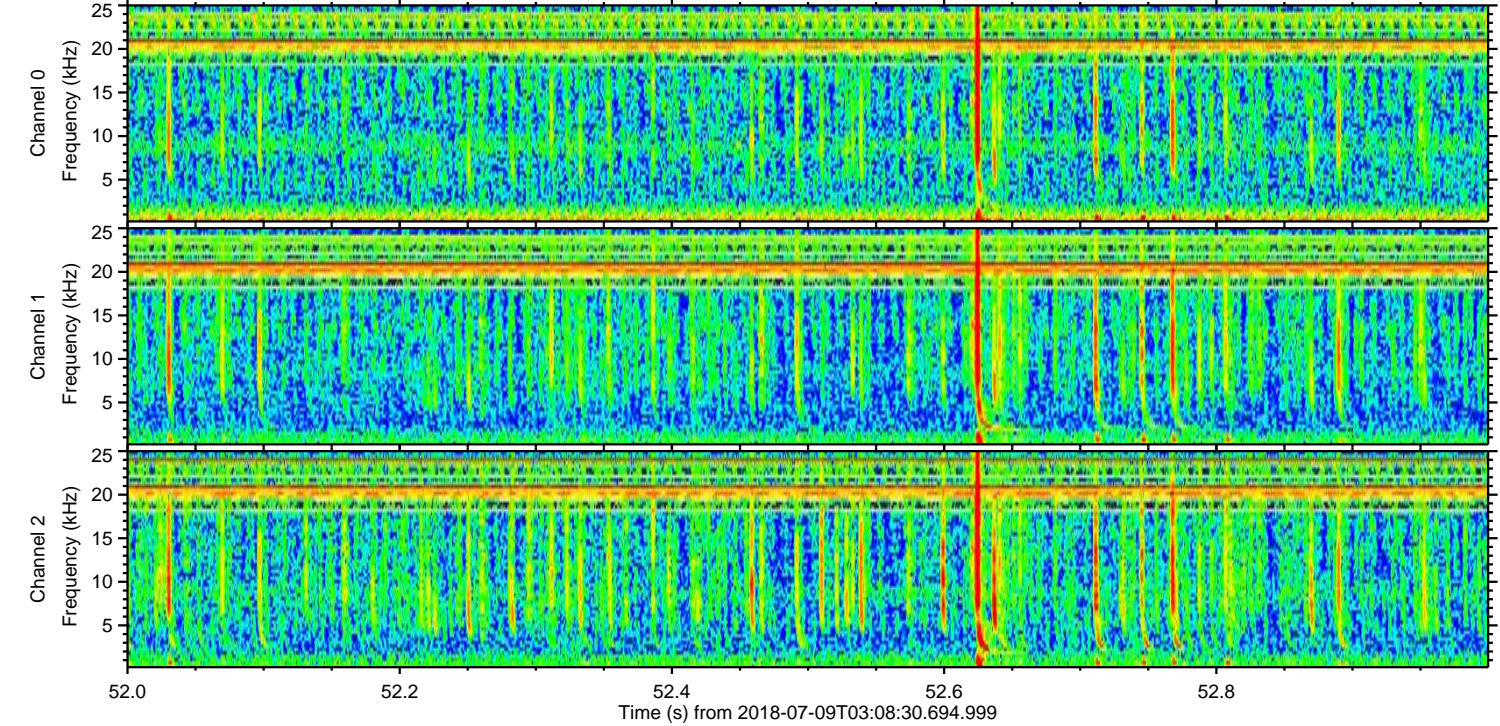
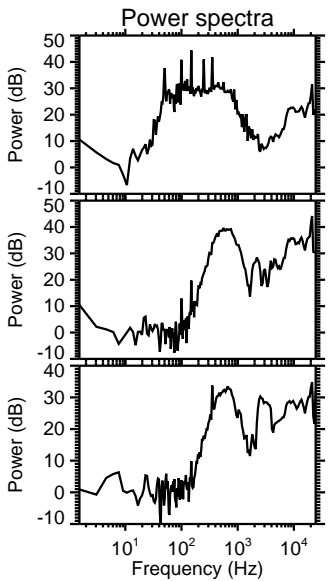
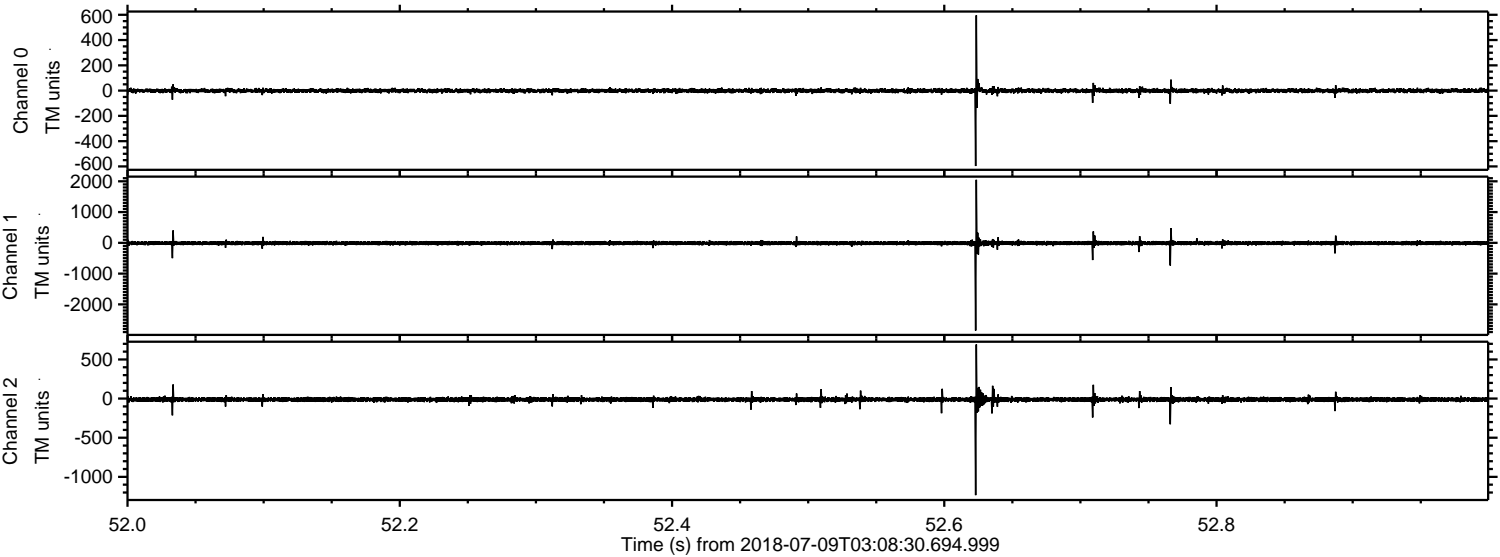
ELMAVAN 3D WAVEFORMS (Measured data sampled at 50 kHz) 51000 packets of 144 samples from 2018-07-09T03:08:30.694.999. Part 66/147

Processed Mon Jul 9 05:16:14 2018 by ELM ver.2012-10-06 from 001\_\_elm20180709\_030829\_\_dat00.bin



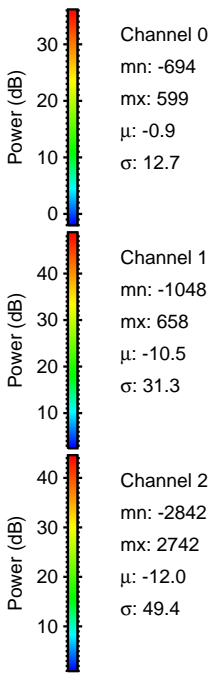
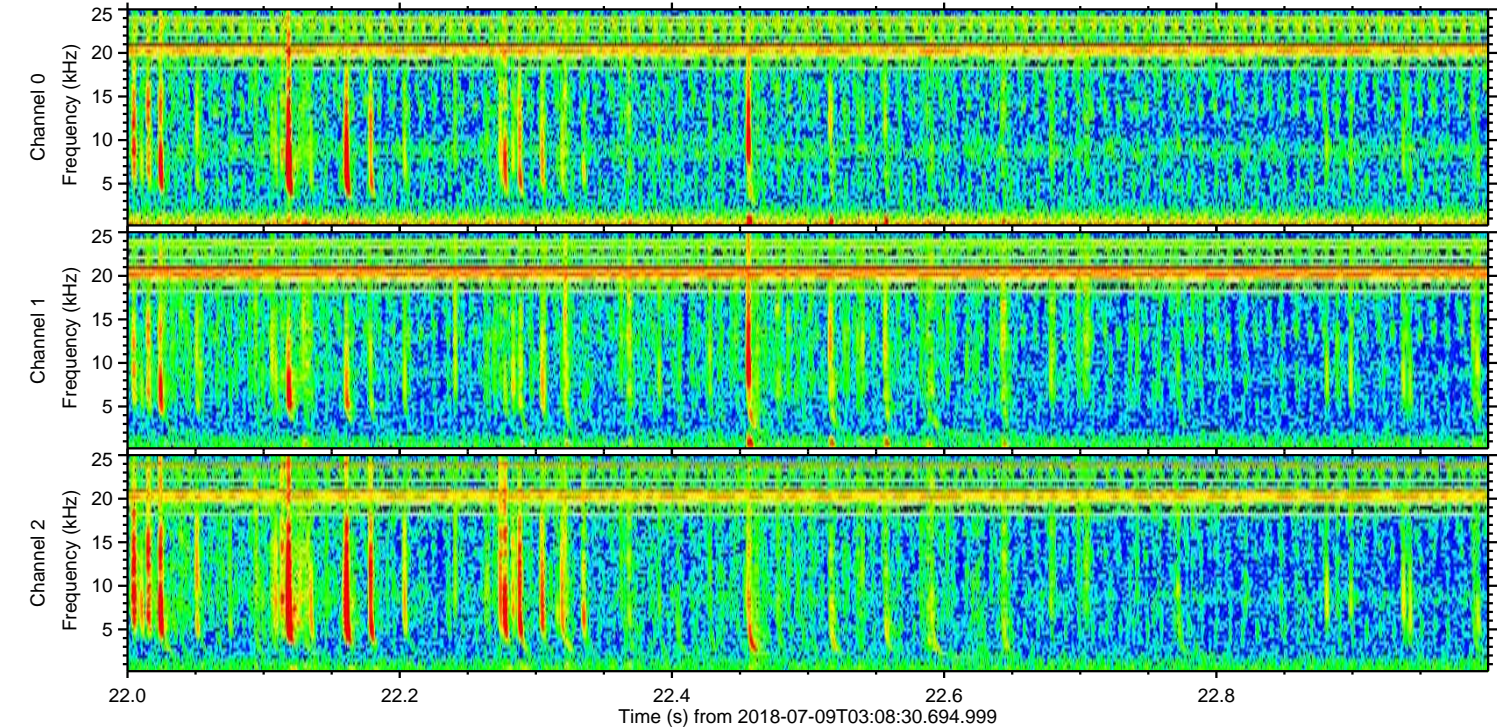
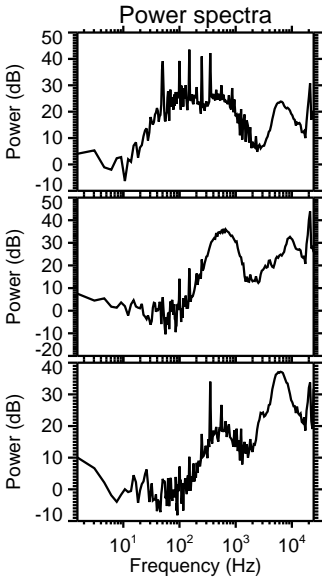
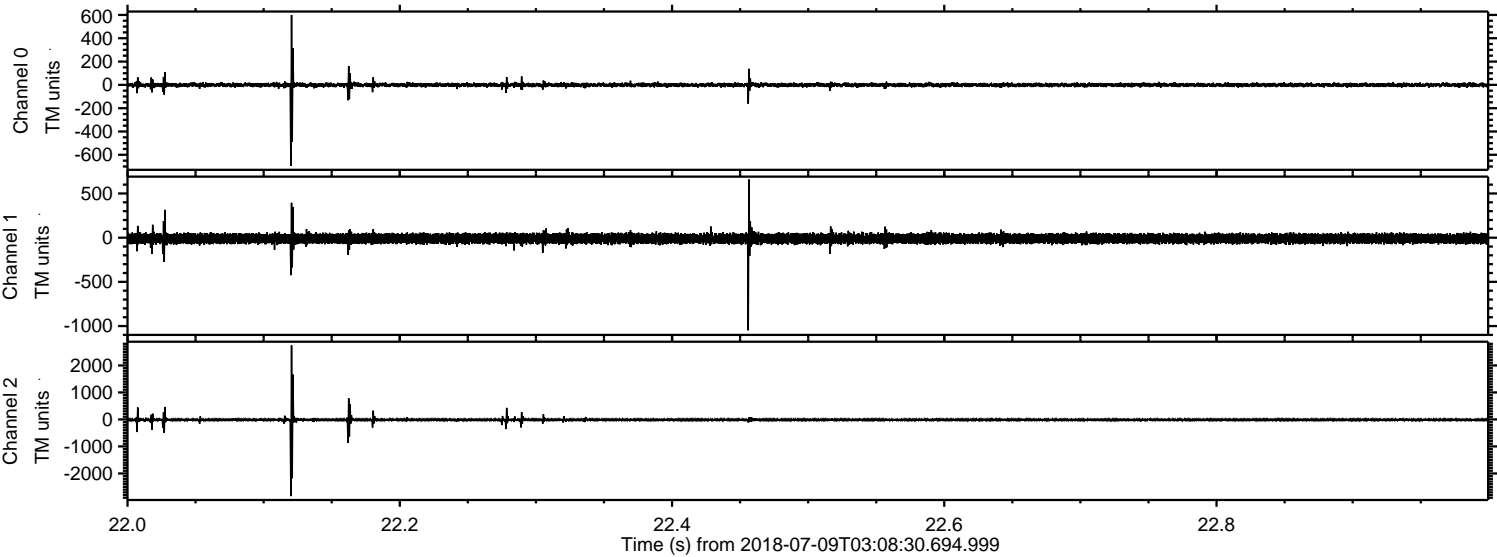


Processed Mon Jul 9 05:16:14 2018 by ELM ver.2012-10-06 from 001\_\_elm20180709\_030829\_\_dat00.bin



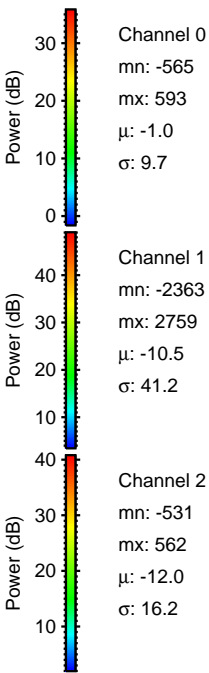
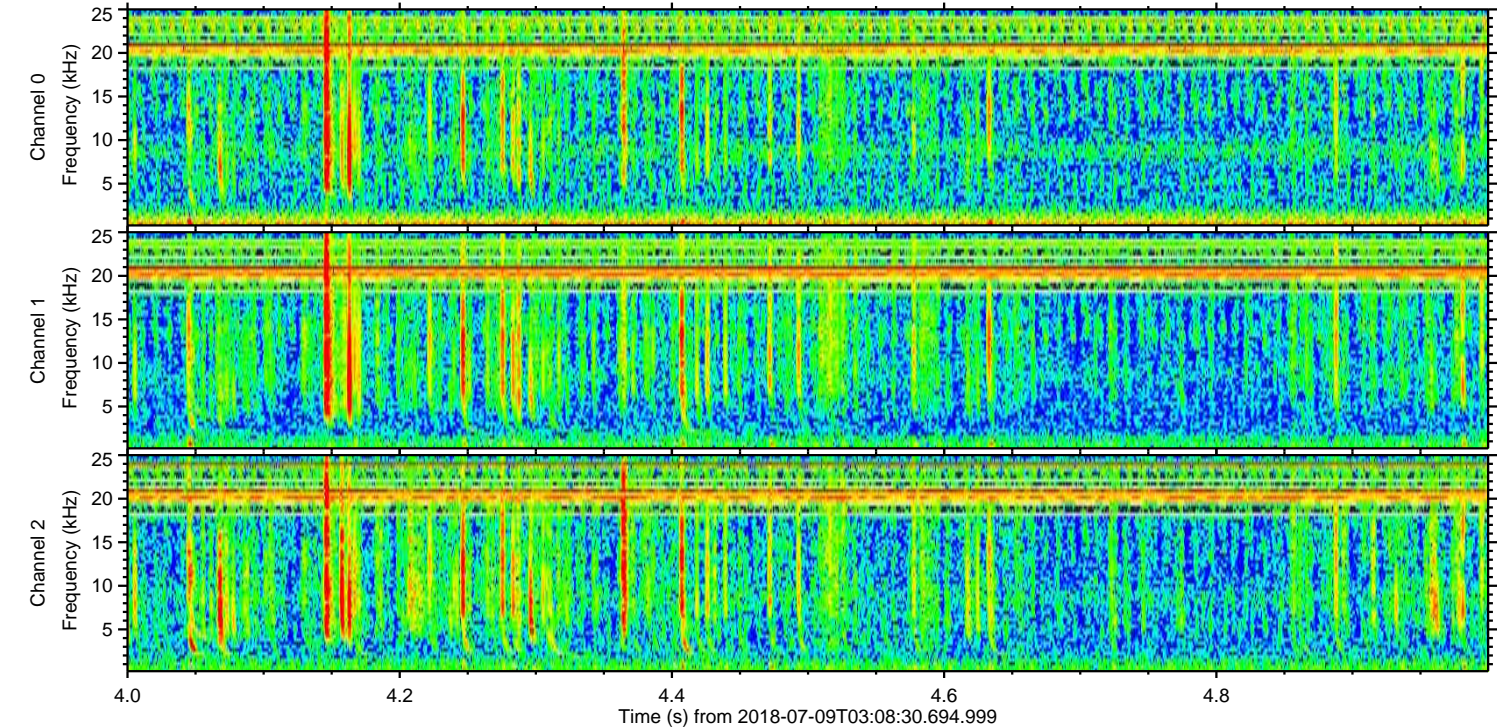
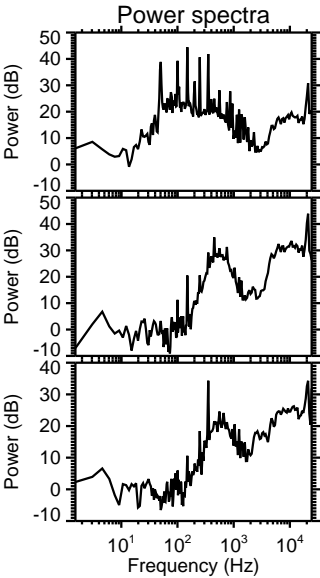
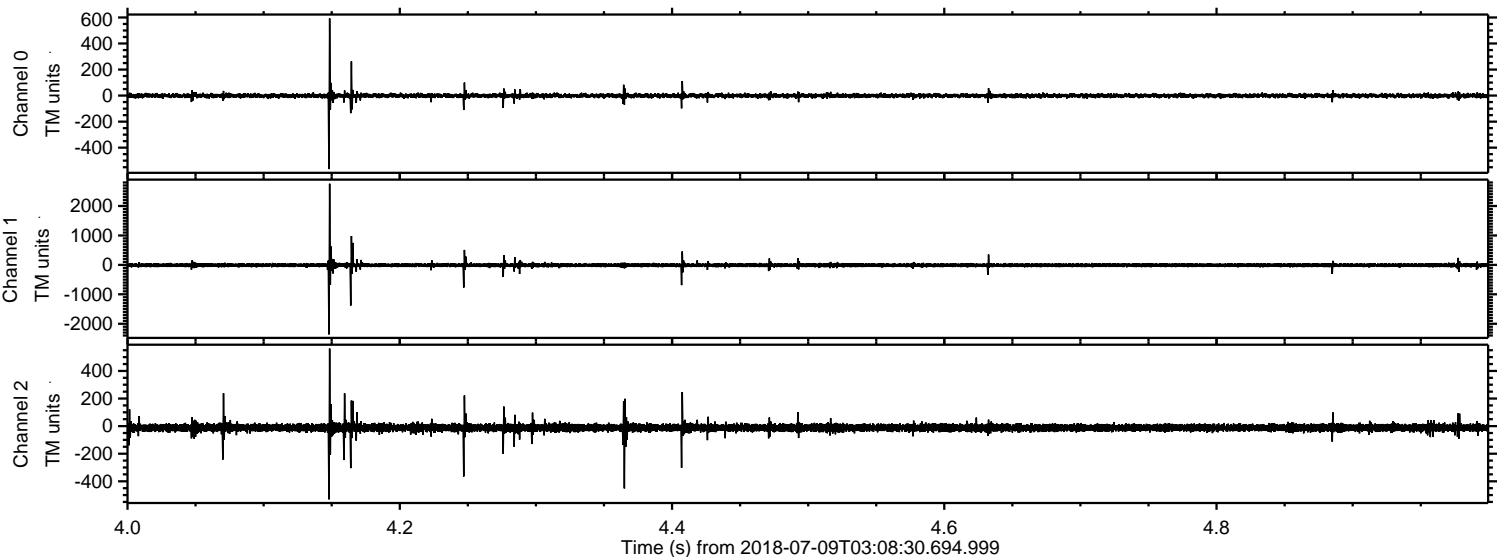


Processed Mon Jul 9 05:16:15 2018 by ELM ver.2012-10-06 from 001\_\_elm20180709\_030829\_\_dat00.bin



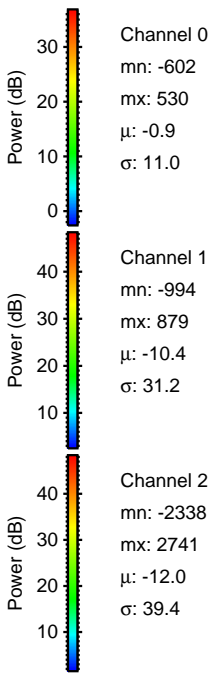
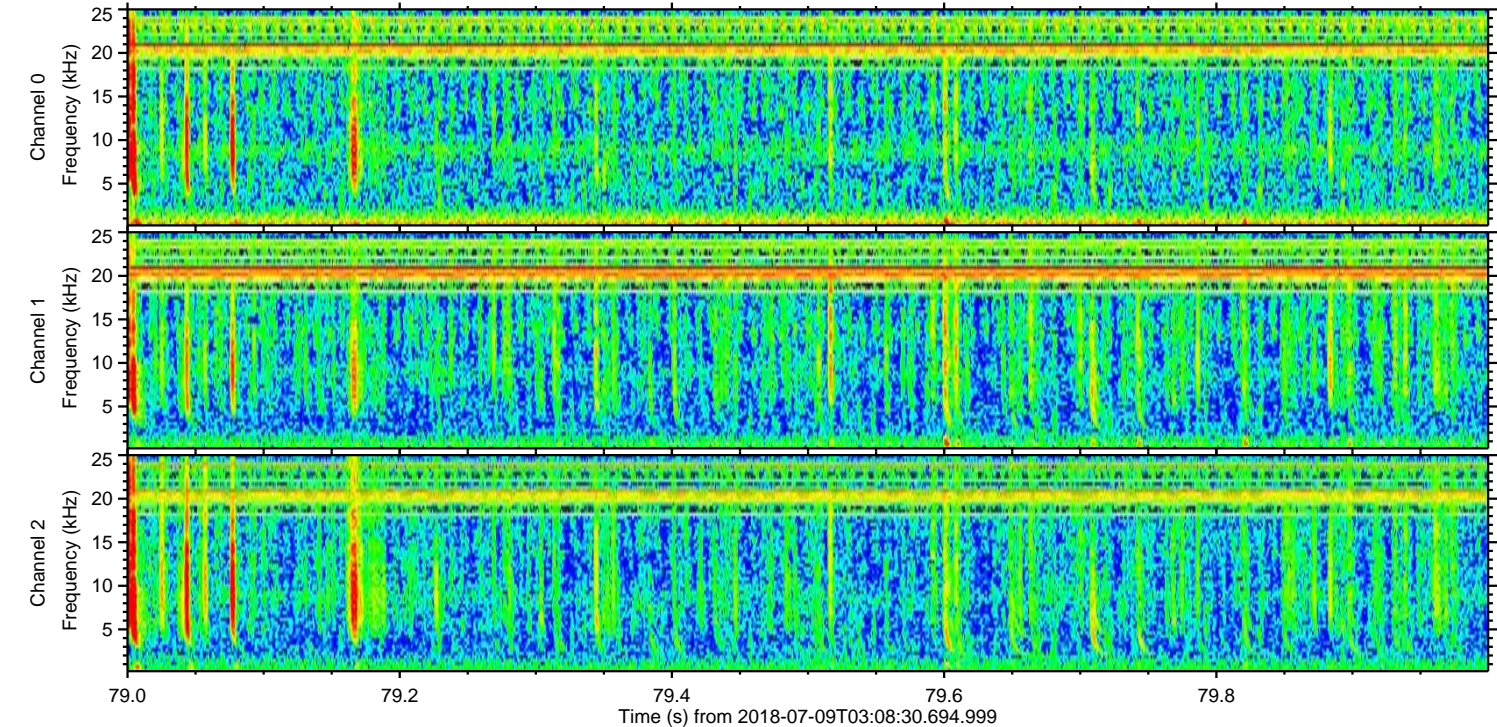
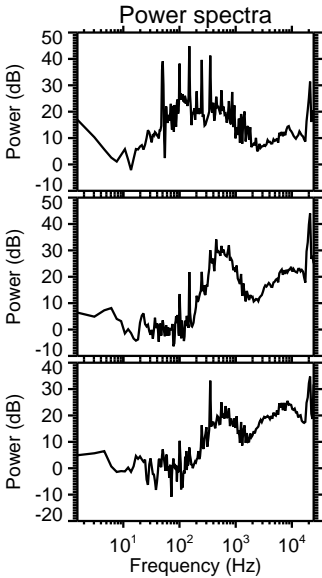
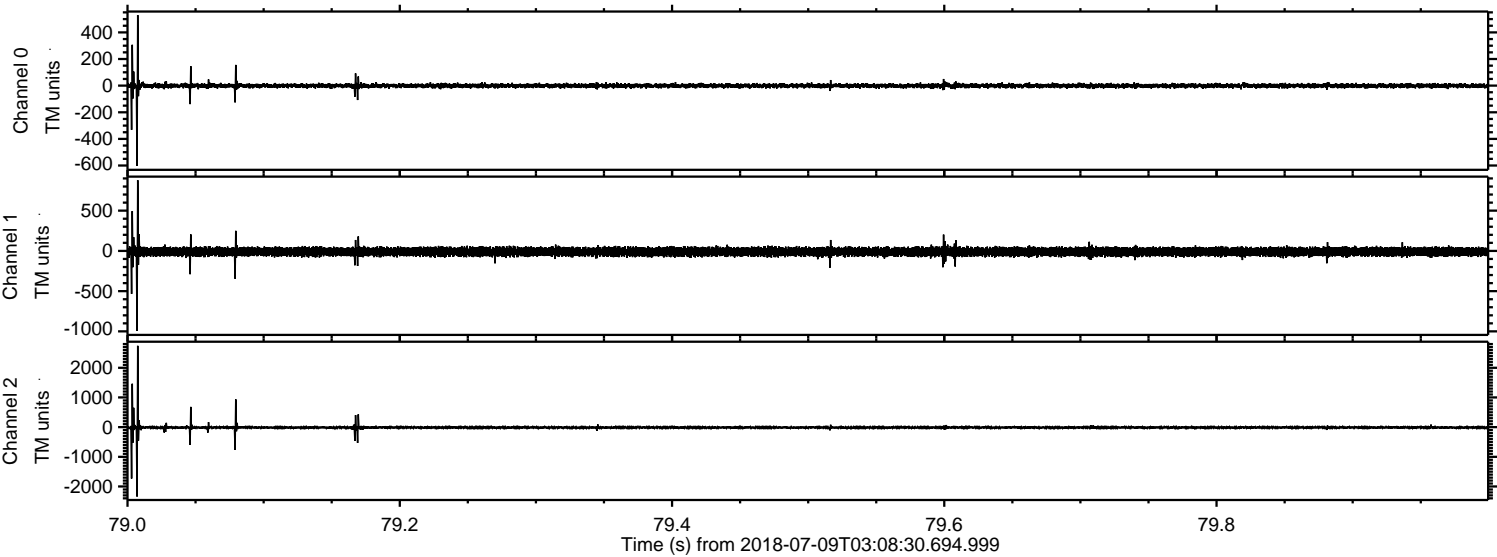


Processed Mon Jul 9 05:16:16 2018 by ELM ver.2012-10-06 from 001\_\_elm20180709\_030829\_\_dat00.bin



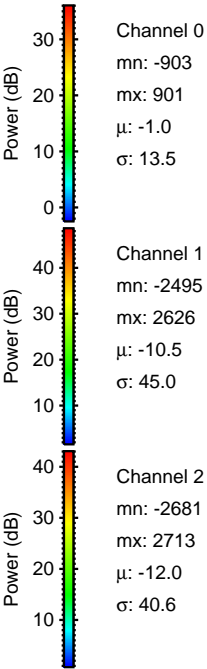
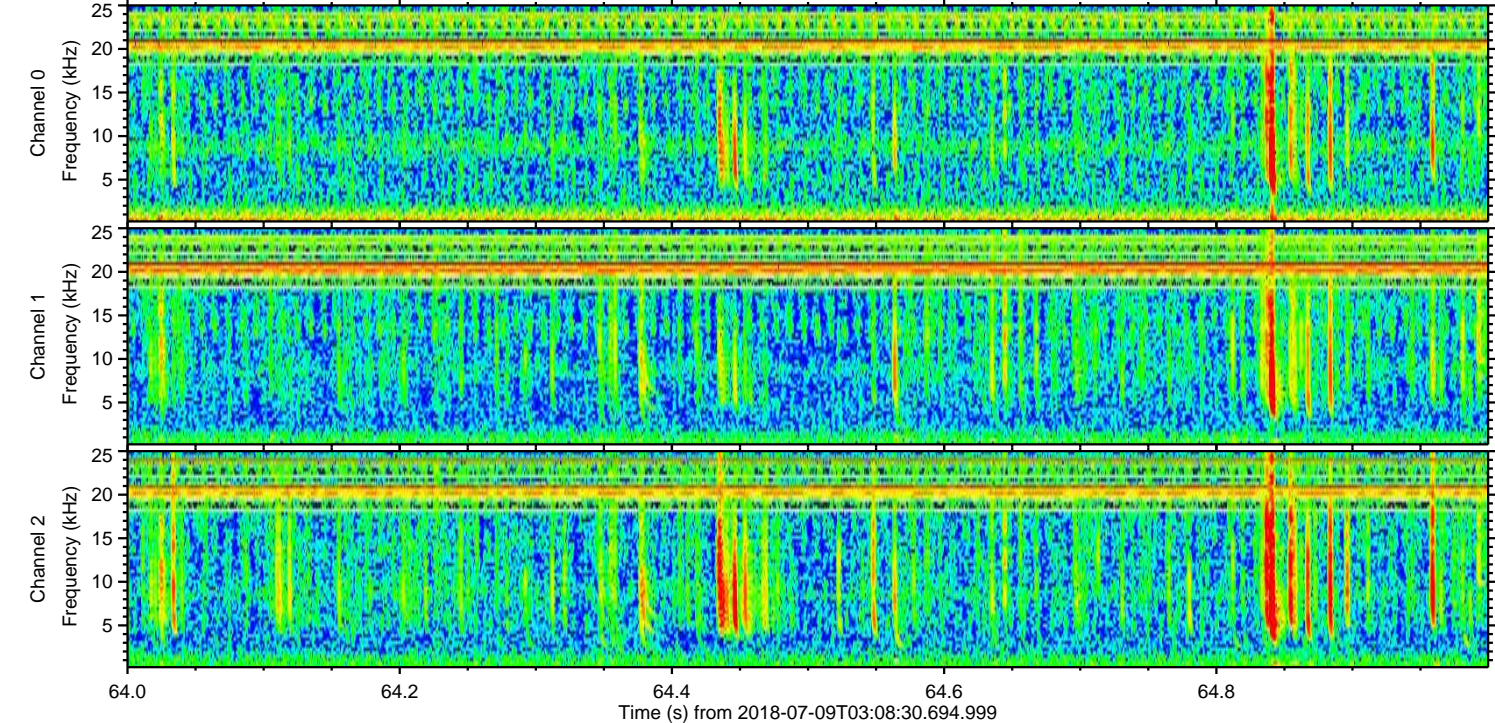
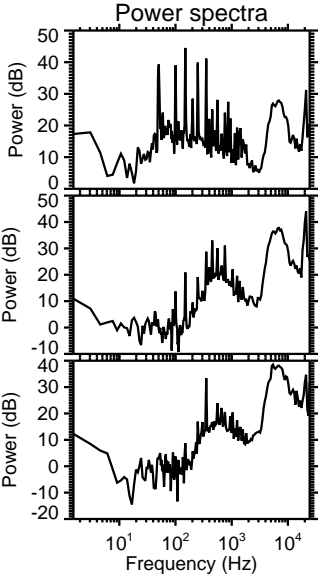
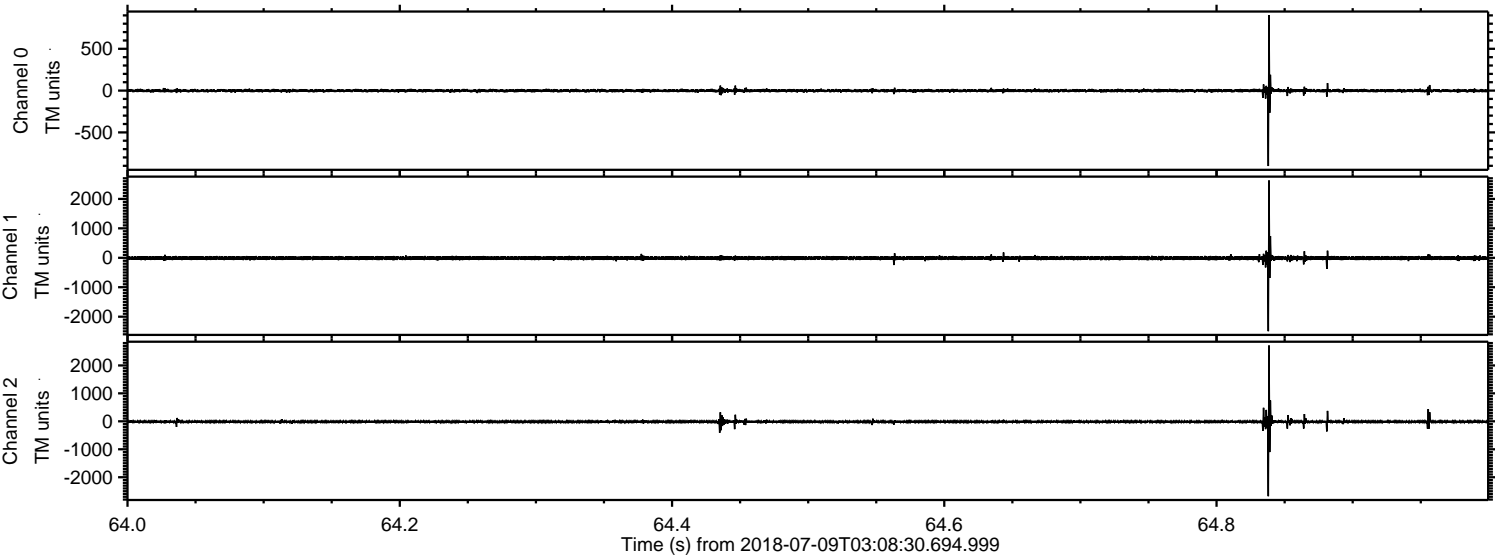


Processed Mon Jul 9 05:16:17 2018 by ELM ver.2012-10-06 from 001\_\_elm20180709\_030829\_\_dat00.bin





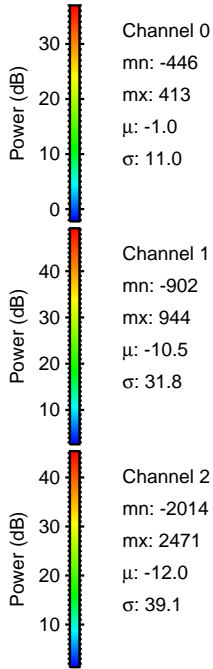
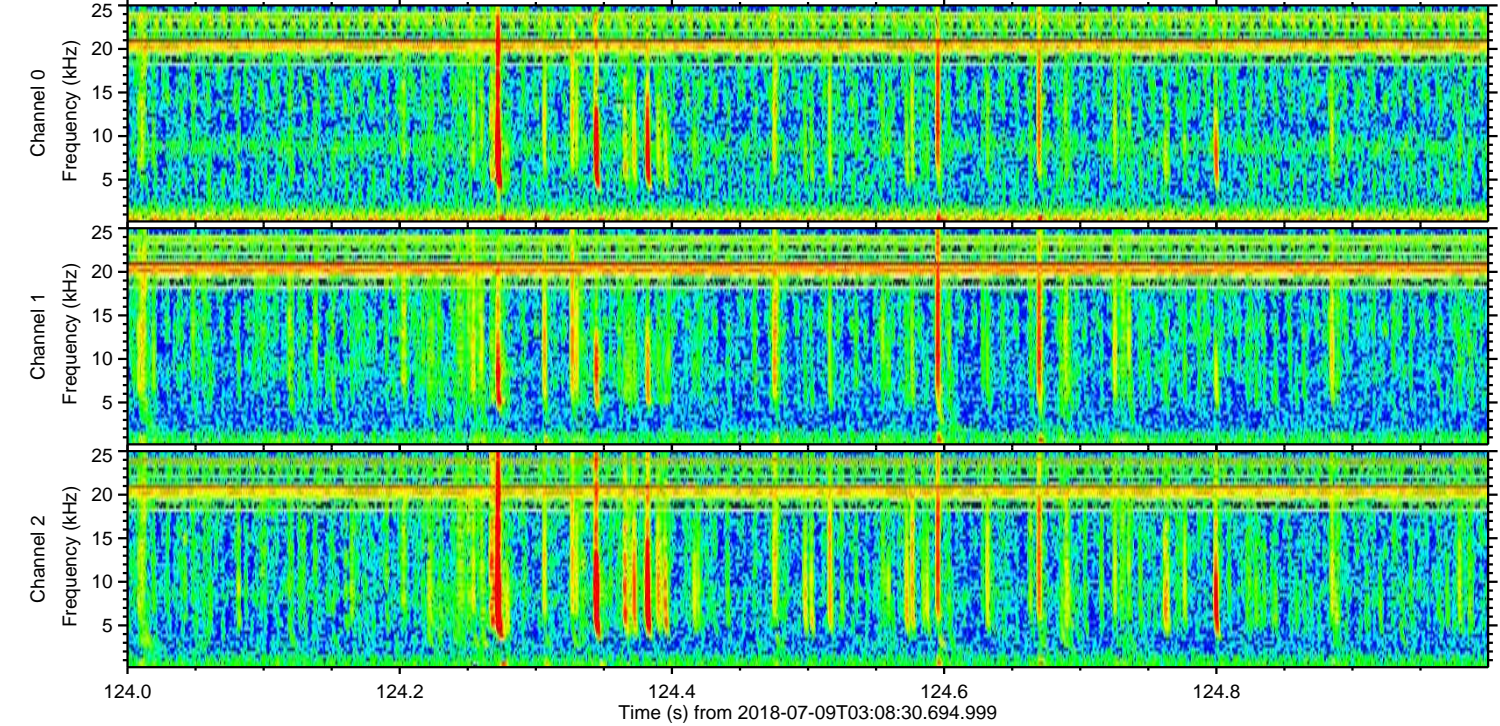
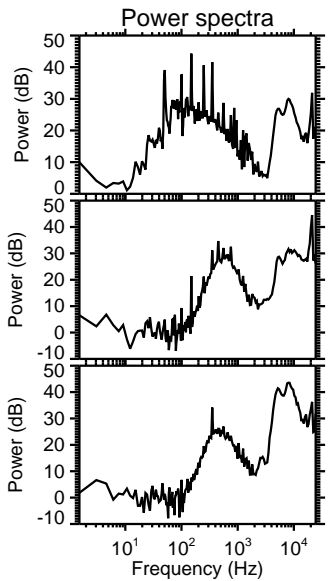
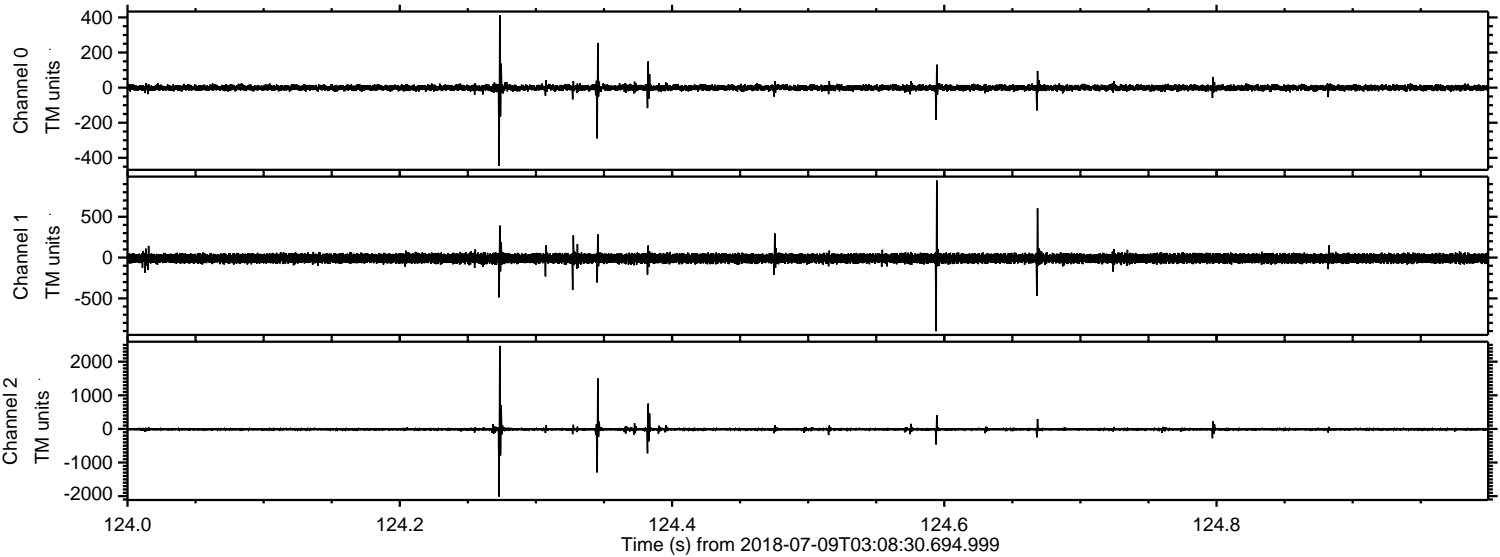
Processed Mon Jul 9 05:16:17 2018 by ELM ver.2012-10-06 from 001\_\_elm20180709\_030829\_\_dat00.bin





ELMAVAN 3D WAVEFORMS (Measured data sampled at 50 kHz) 51000 packets of 144 samples from 2018-07-09T03:08:30.694.999. Part 125/147

Processed Mon Jul 9 05:16:18 2018 by ELM ver.2012-10-06 from 001\_\_elm20180709\_030829\_\_dat00.bin





Processed Mon Jul 9 05:16:19 2018 by ELM ver.2012-10-06 from 001\_\_elm20180709\_030829\_\_dat00.bin

