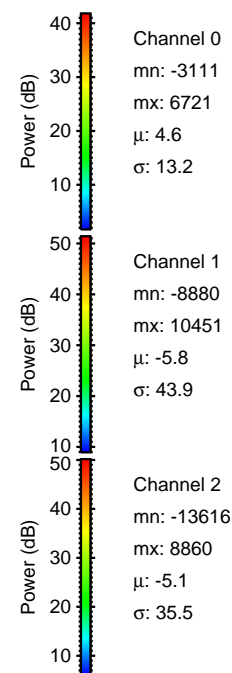
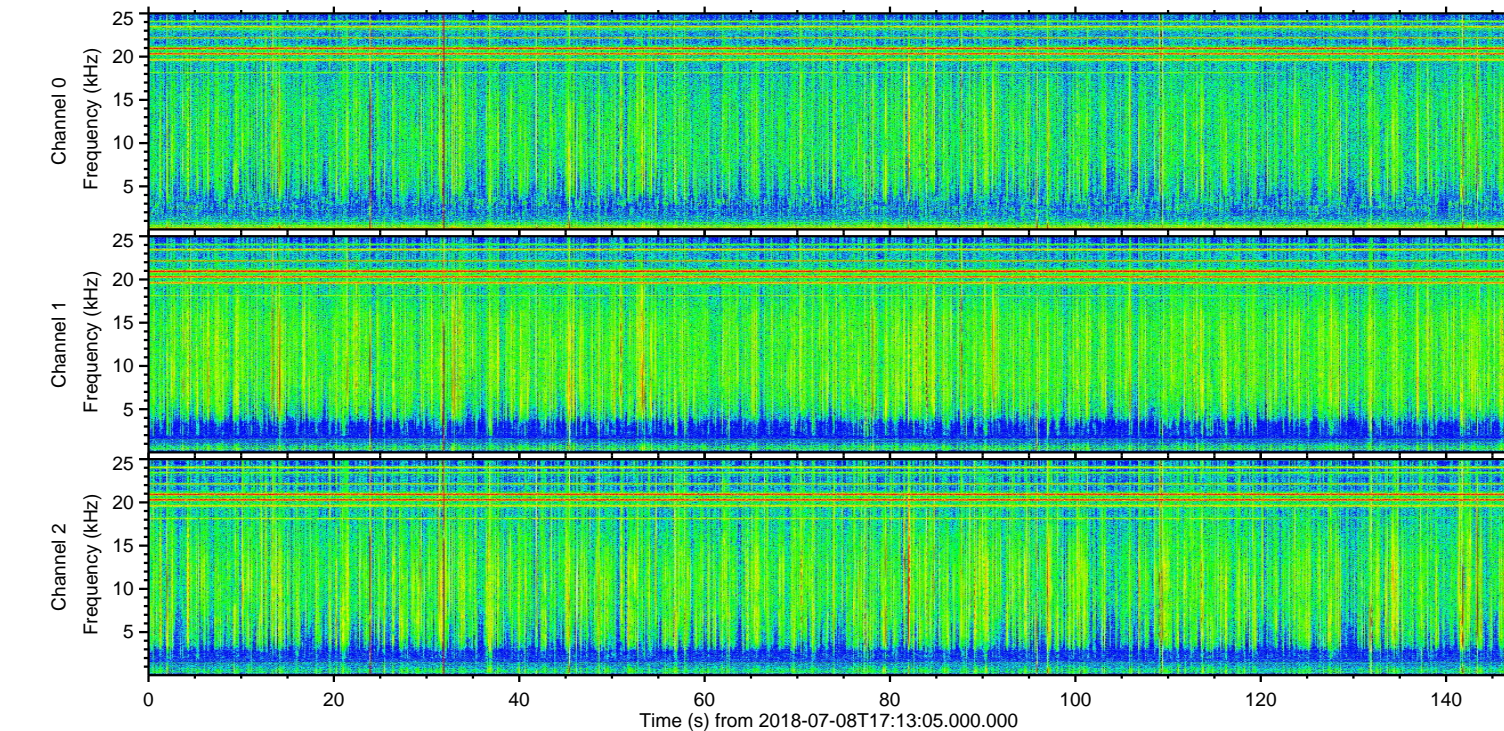
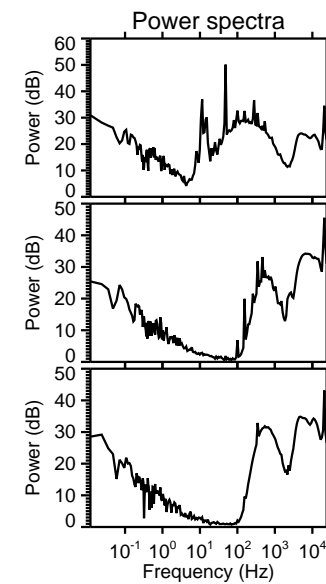
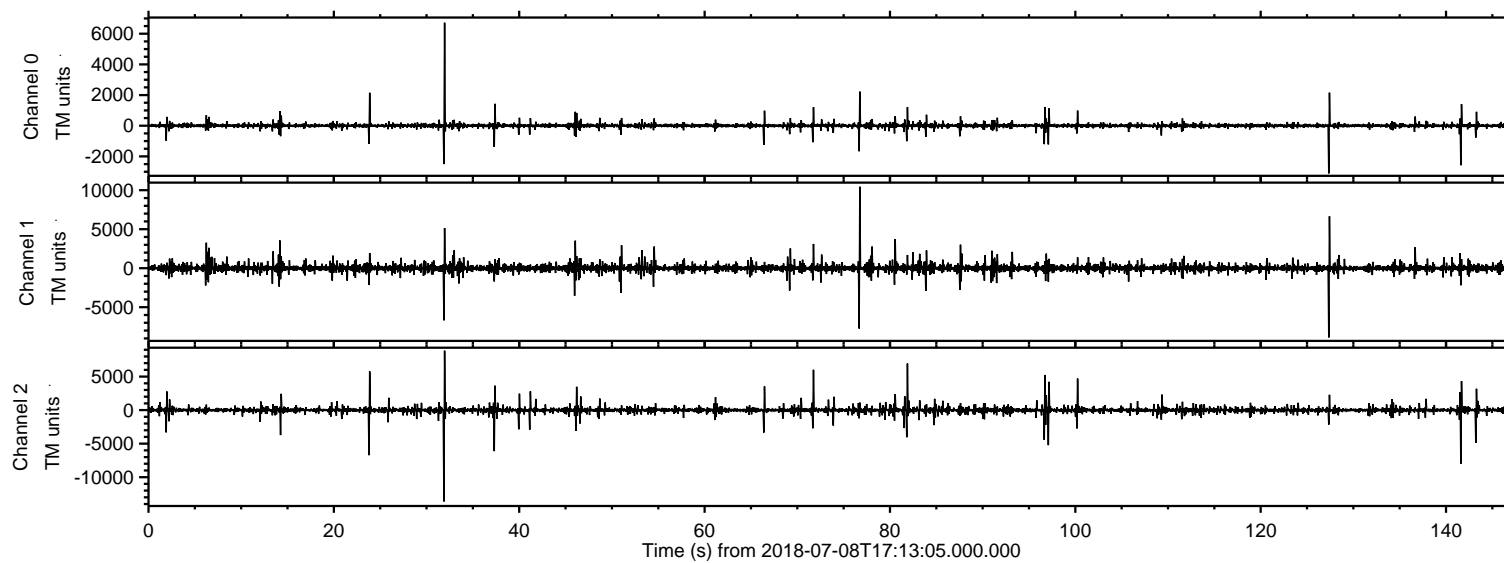
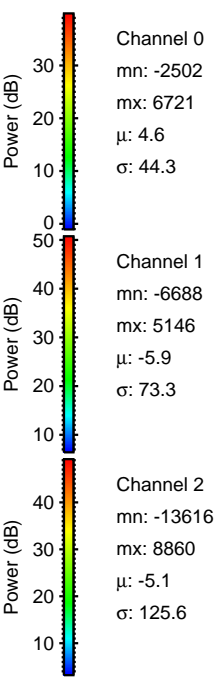
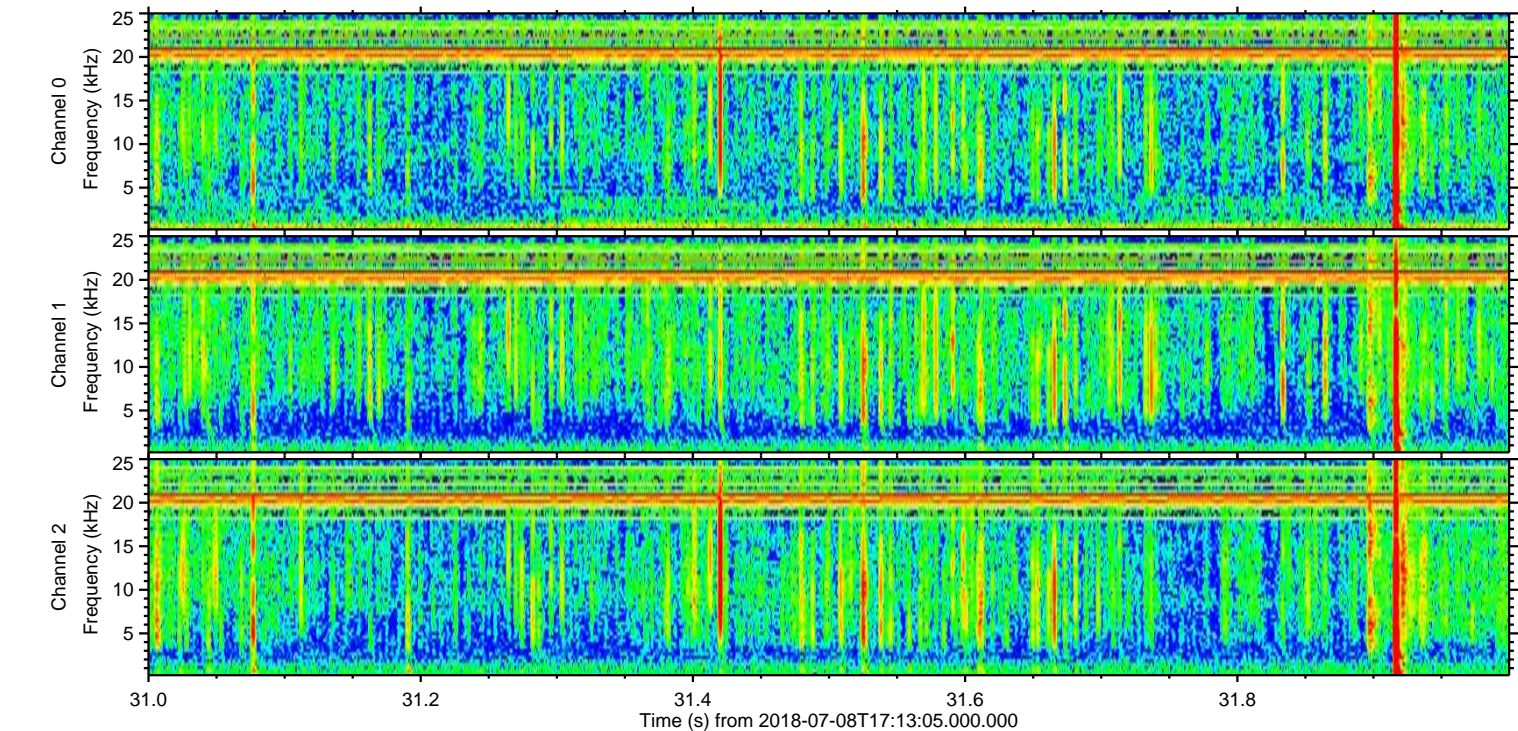
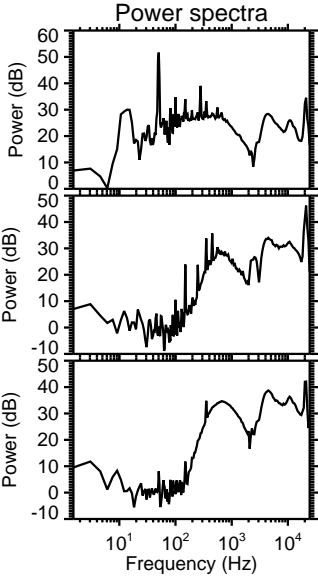
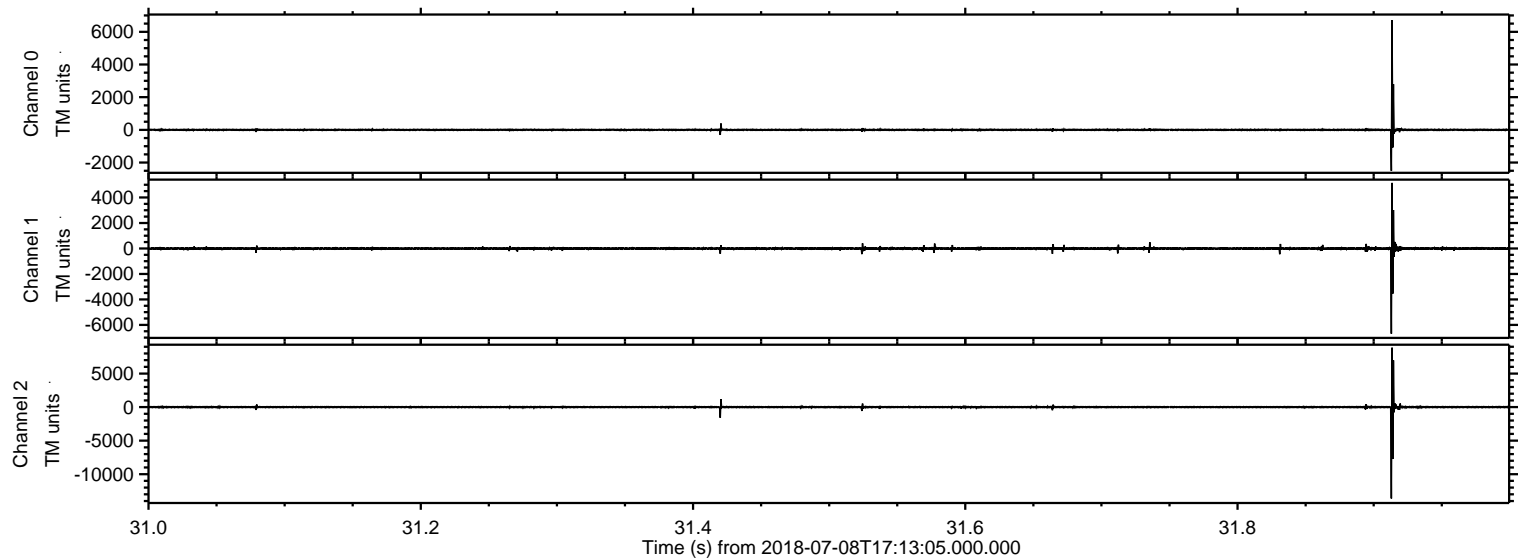


ELMAVAN 3D WAVEFORMS (Measured data sampled at 50 kHz) 51000 packets of 144 samples from 2018-07-08T17:13:05.000.000.

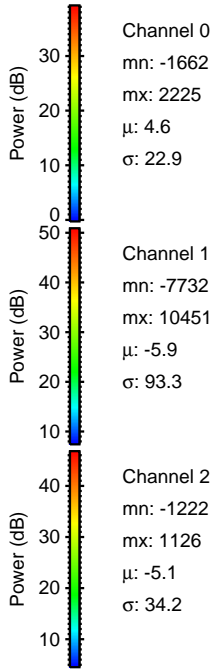
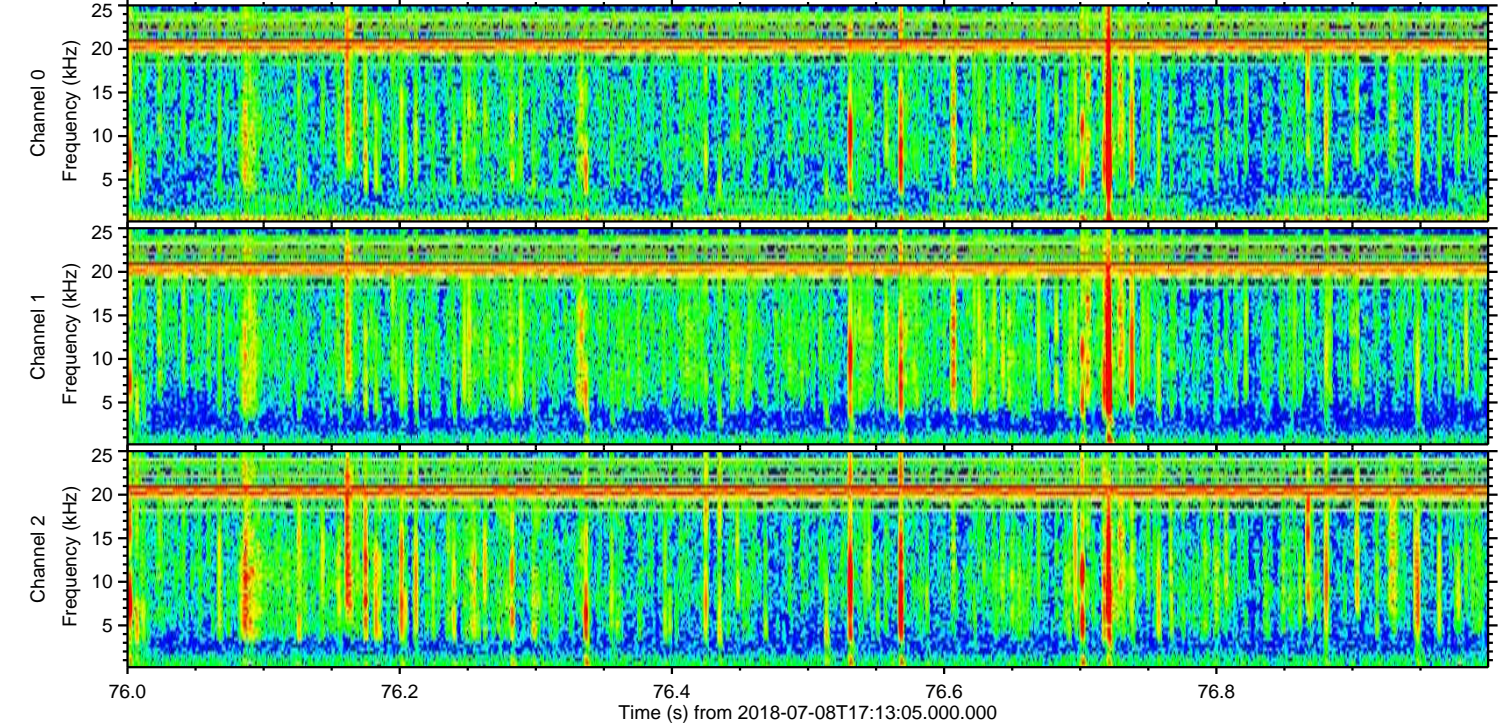
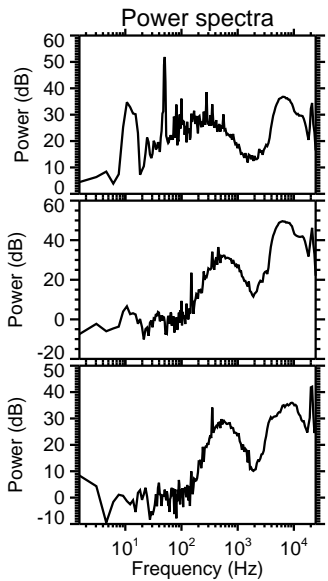
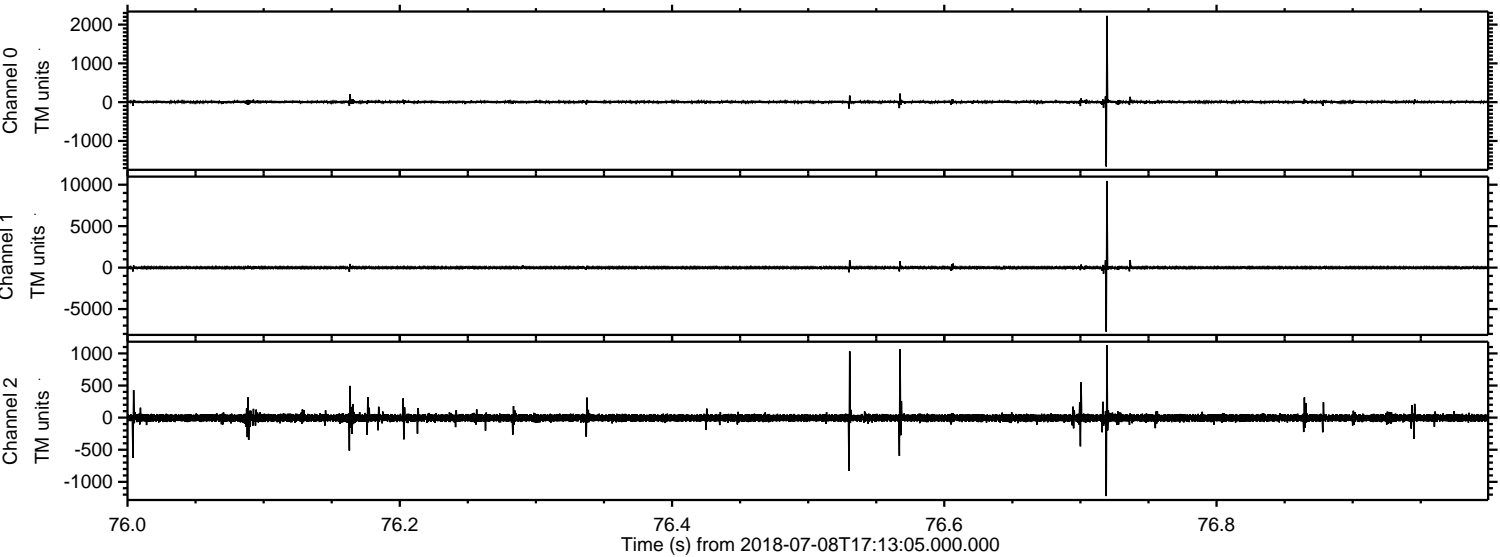
Processed Sun Jul 8 19:20:19 2018 by ELM ver.2012-10-06 from 001__elm20180708_171303__dat00.bin



Processed Sun Jul 8 19:20:26 2018 by ELM ver.2012-10-06 from 001__elm20180708_171303__dat00.bin

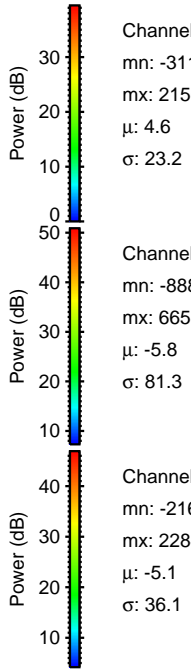
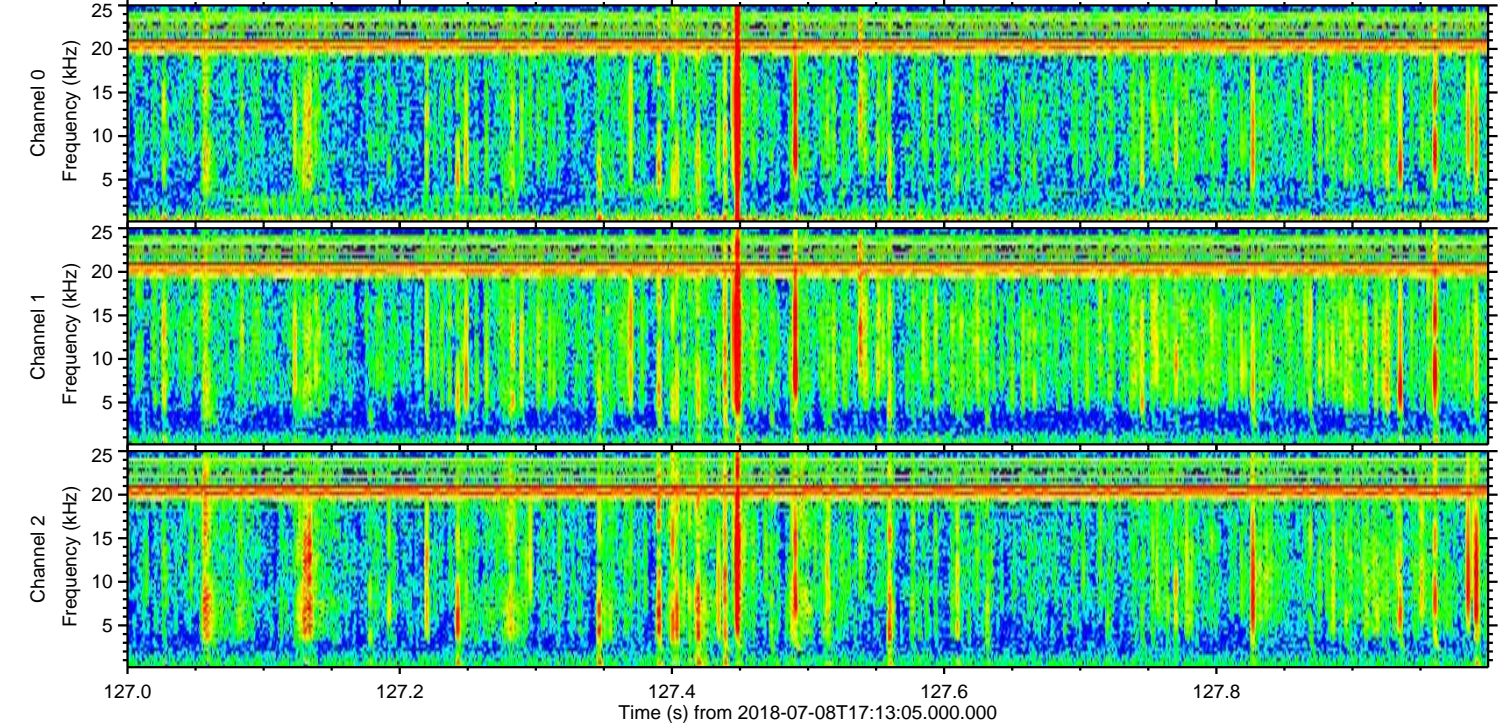
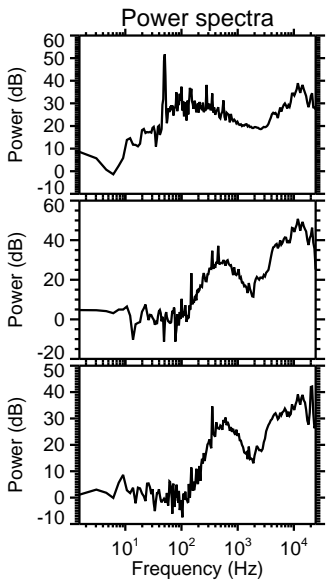
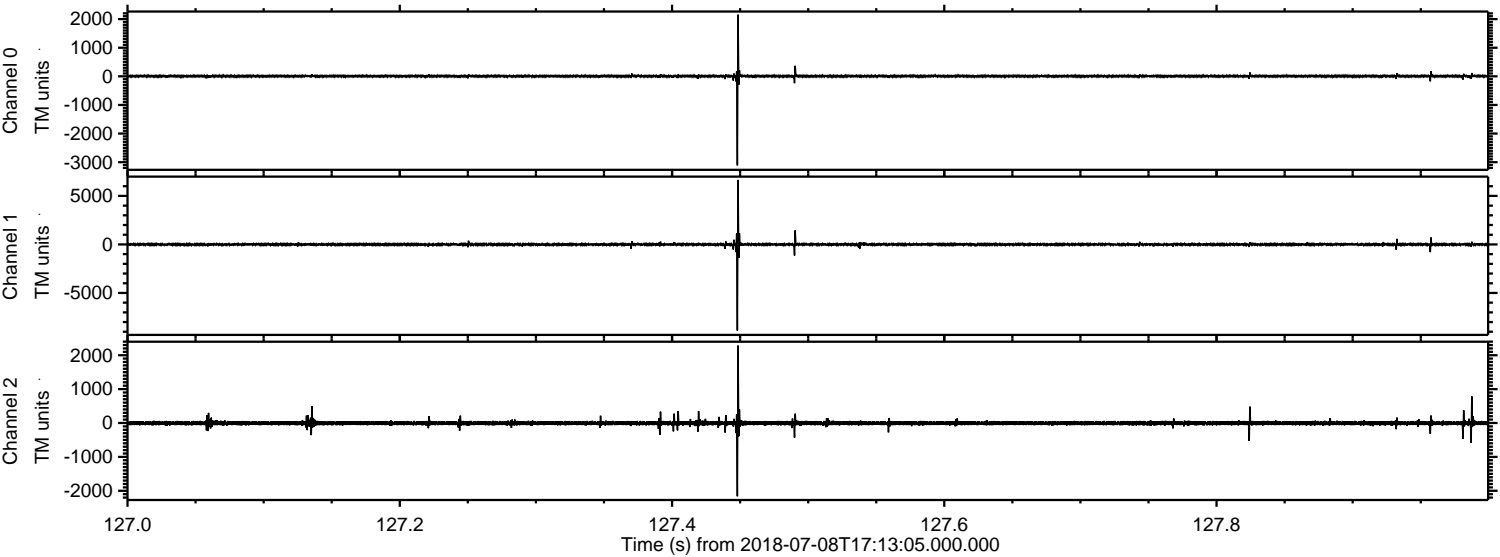


Processed Sun Jul 8 19:20:26 2018 by ELM ver.2012-10-06 from 001__elm20180708_171303__dat00.bin



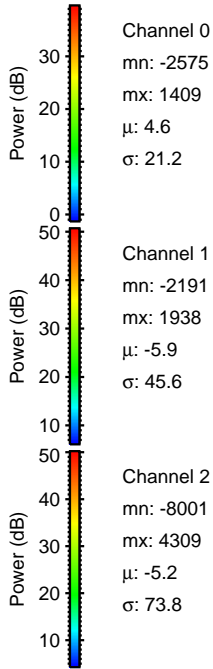
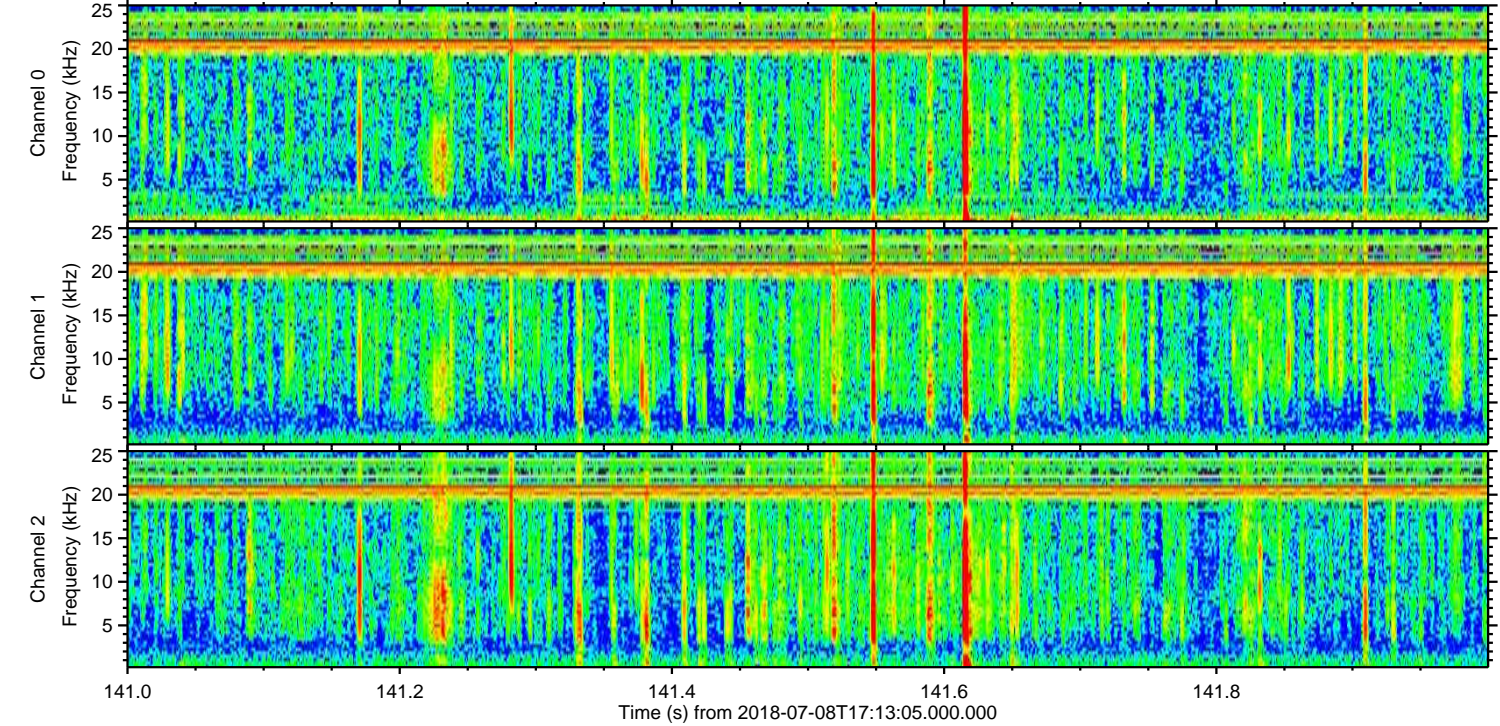
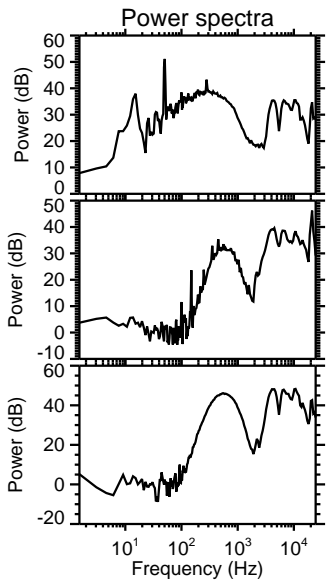
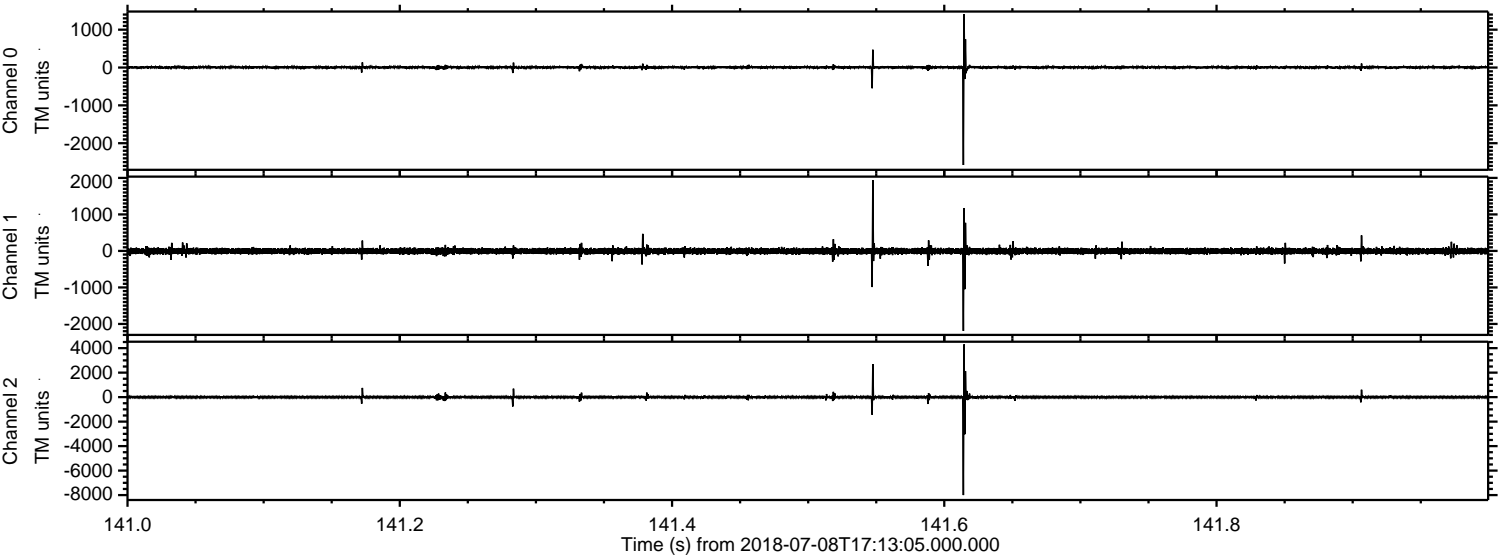
ELMAVAN 3D WAVEFORMS (Measured data sampled at 50 kHz) 51000 packets of 144 samples from 2018-07-08T17:13:05.000.000. Part 128/147

Processed Sun Jul 8 19:20:27 2018 by ELM ver.2012-10-06 from 001__elm20180708_171303__dat00.bin

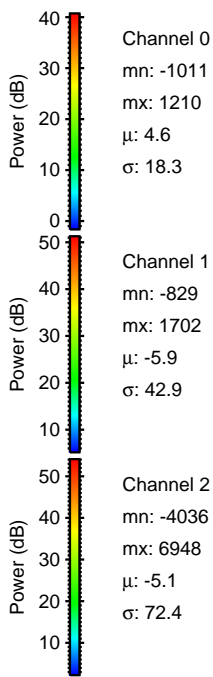
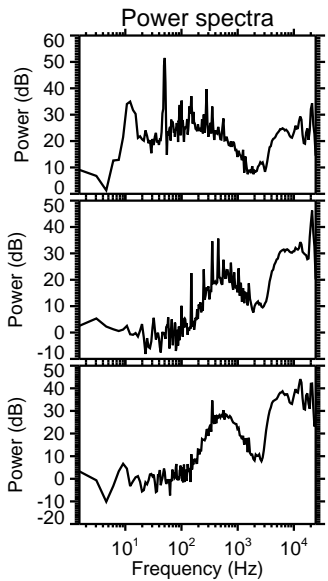
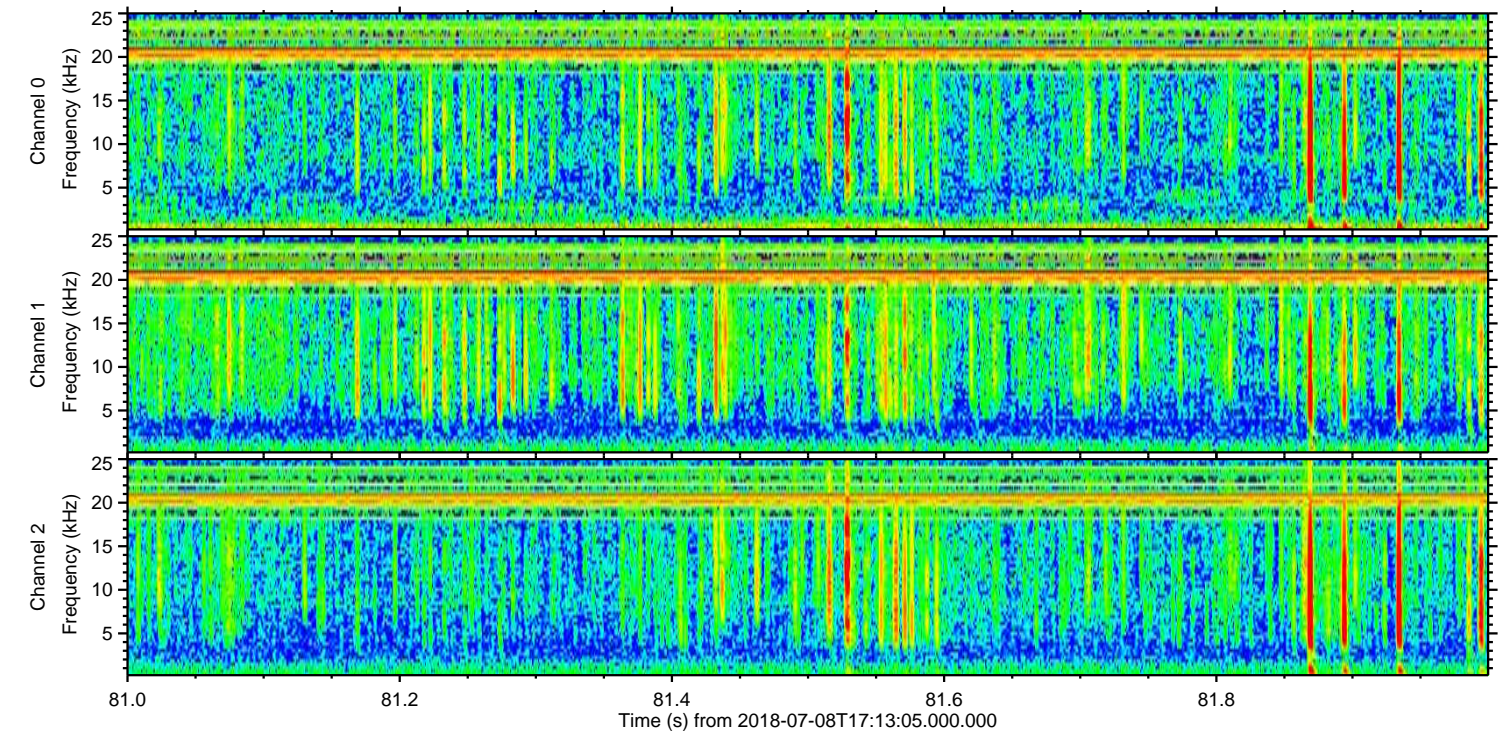
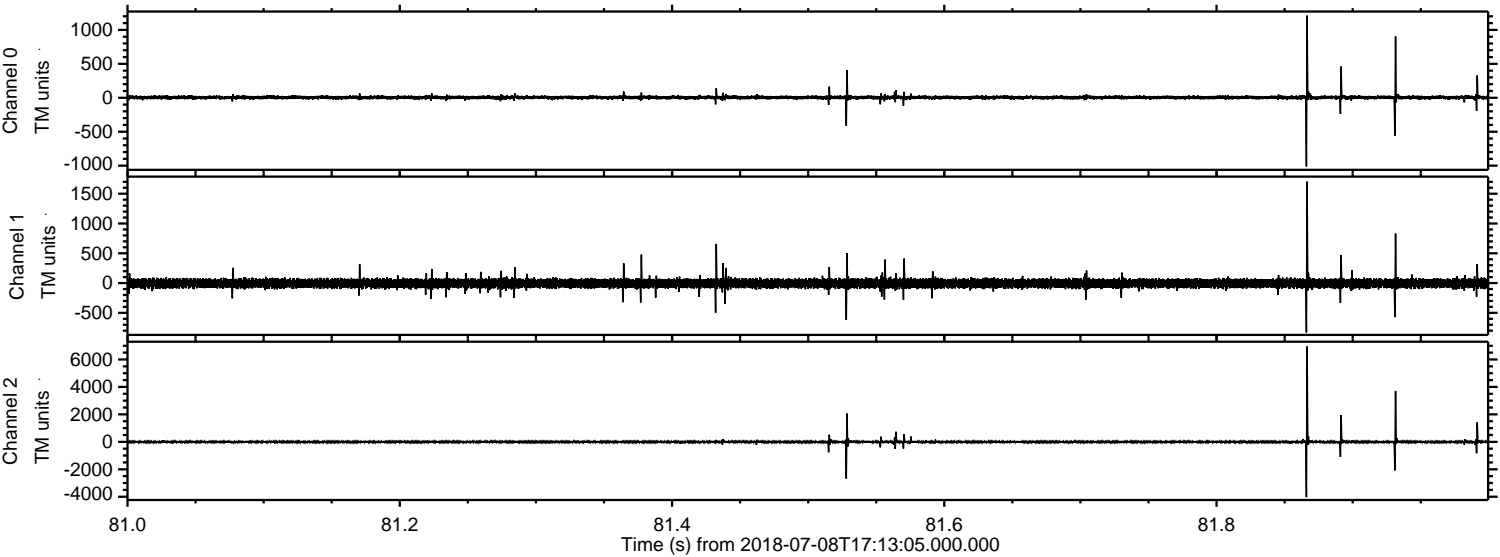


ELMAVAN 3D WAVEFORMS (Measured data sampled at 50 kHz) 51000 packets of 144 samples from 2018-07-08T17:13:05.000.000. Part 142/147

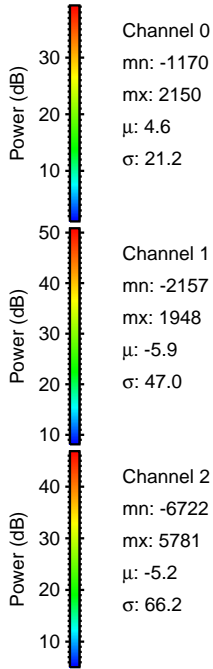
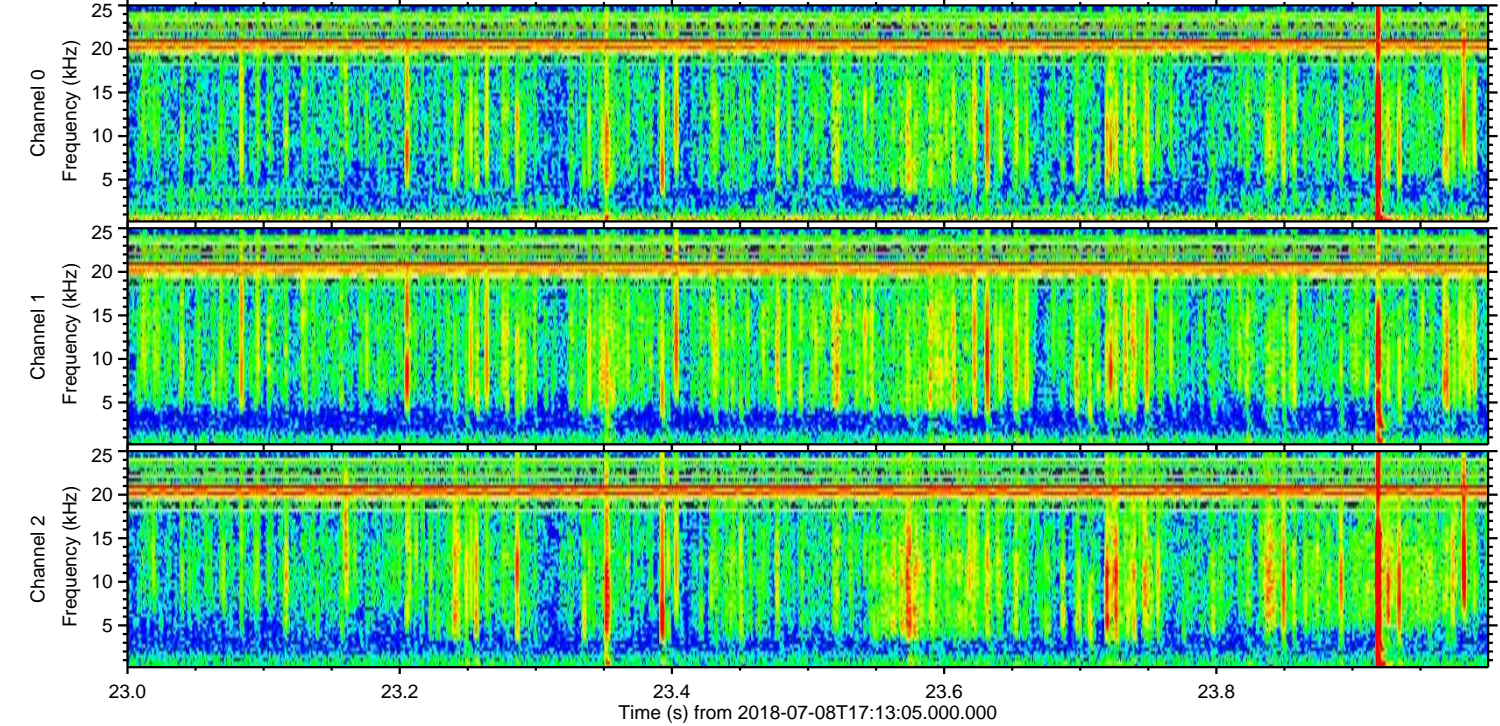
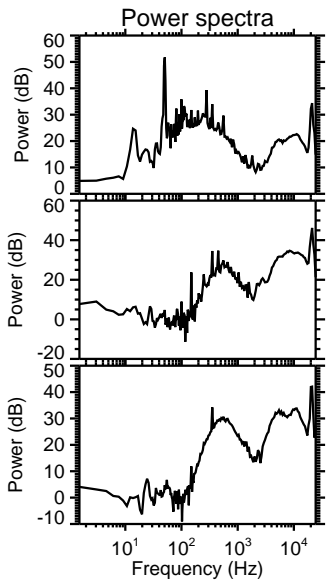
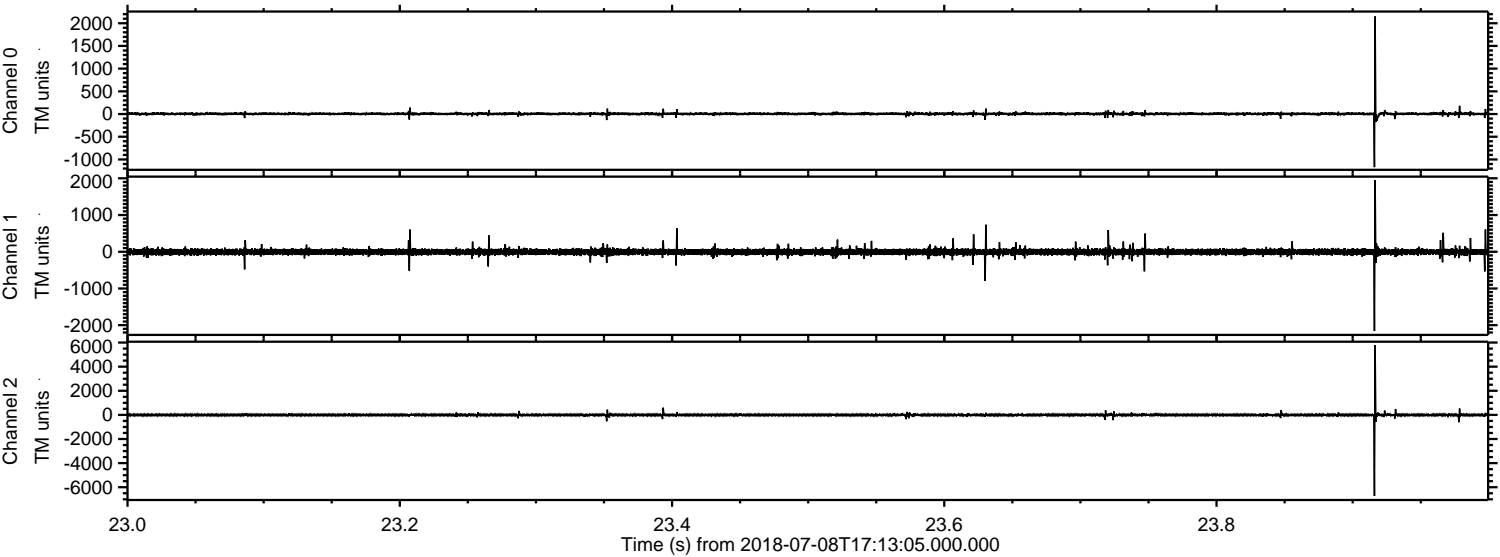
Processed Sun Jul 8 19:20:28 2018 by ELM ver.2012-10-06 from 001__elm20180708_171303__dat00.bin



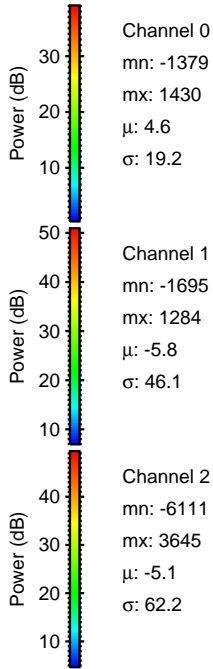
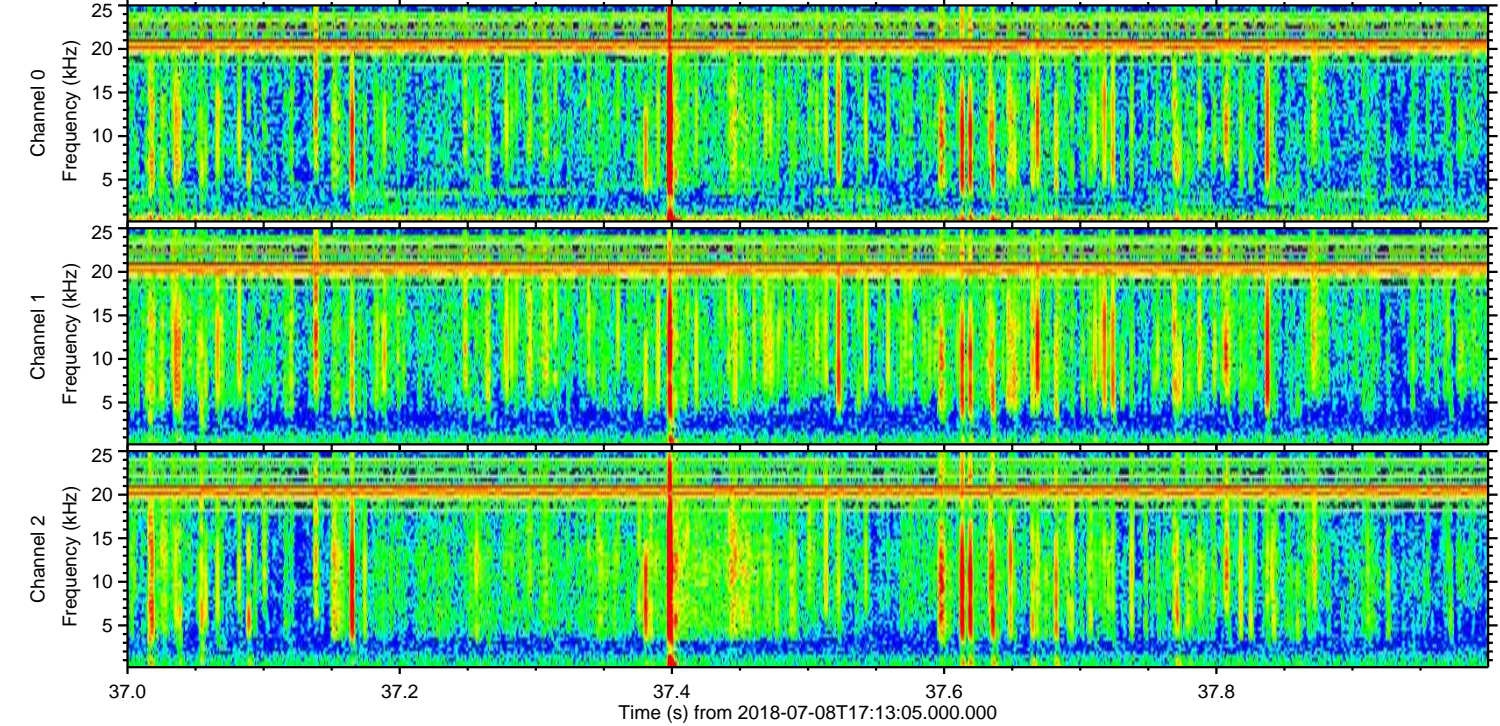
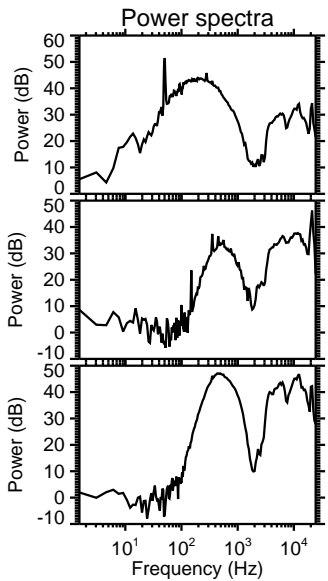
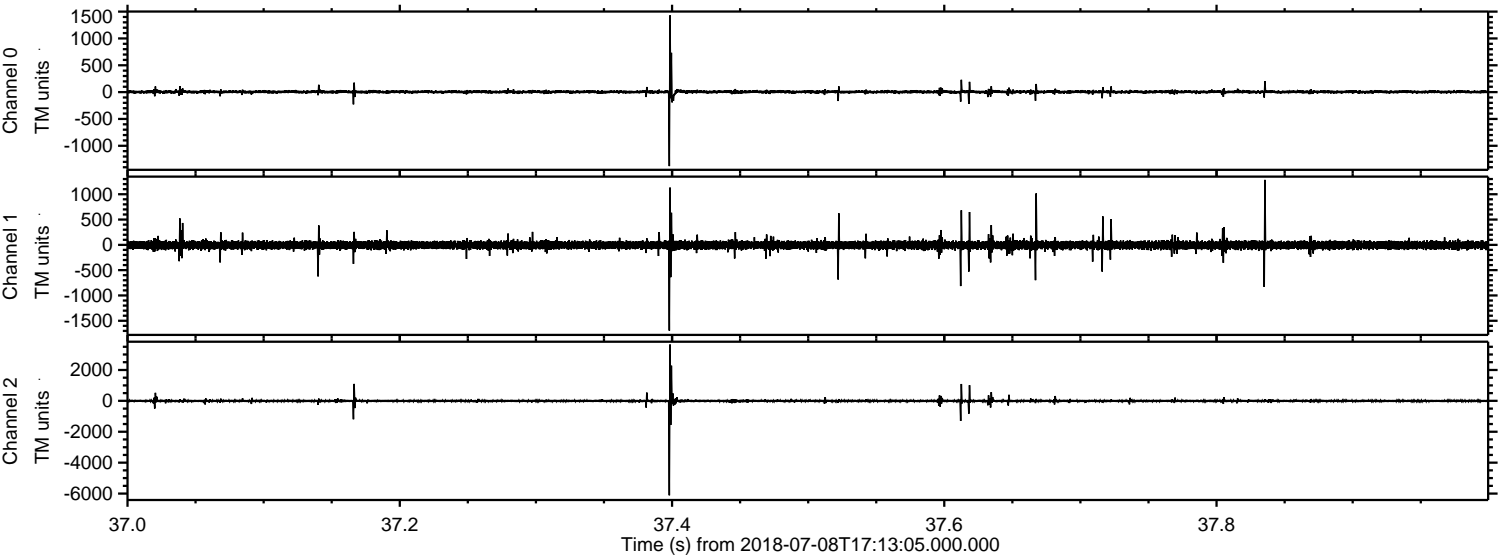
Processed Sun Jul 8 19:20:29 2018 by ELM ver.2012-10-06 from 001__elm20180708_171303__dat00.bin



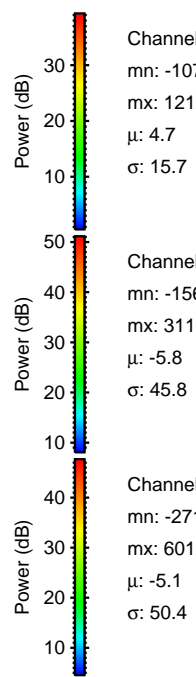
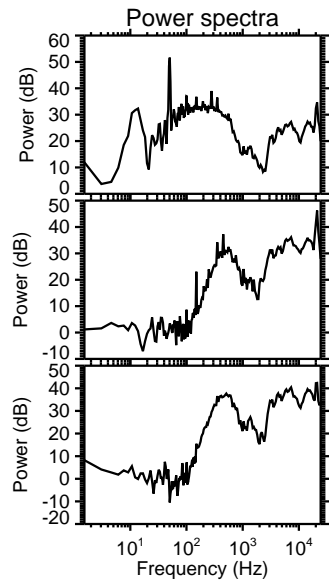
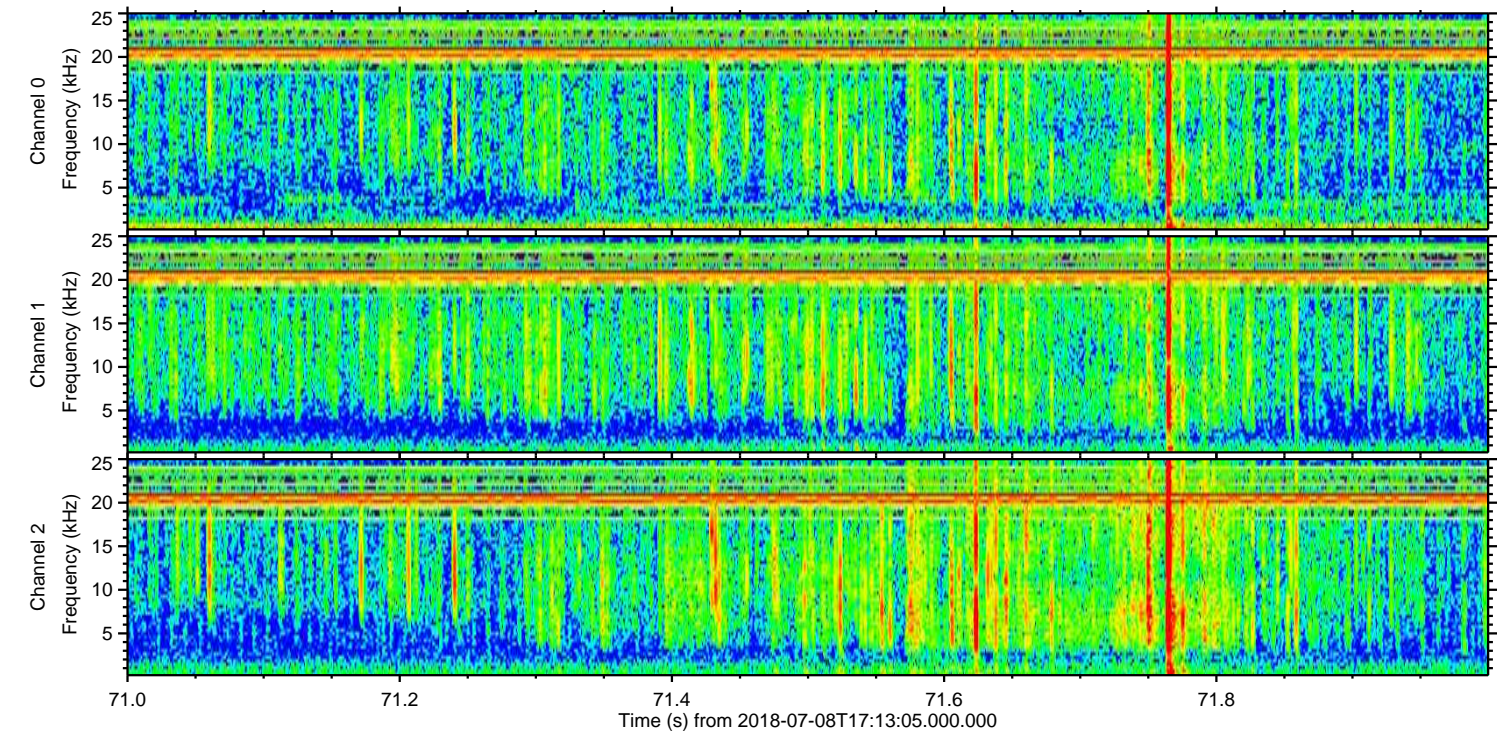
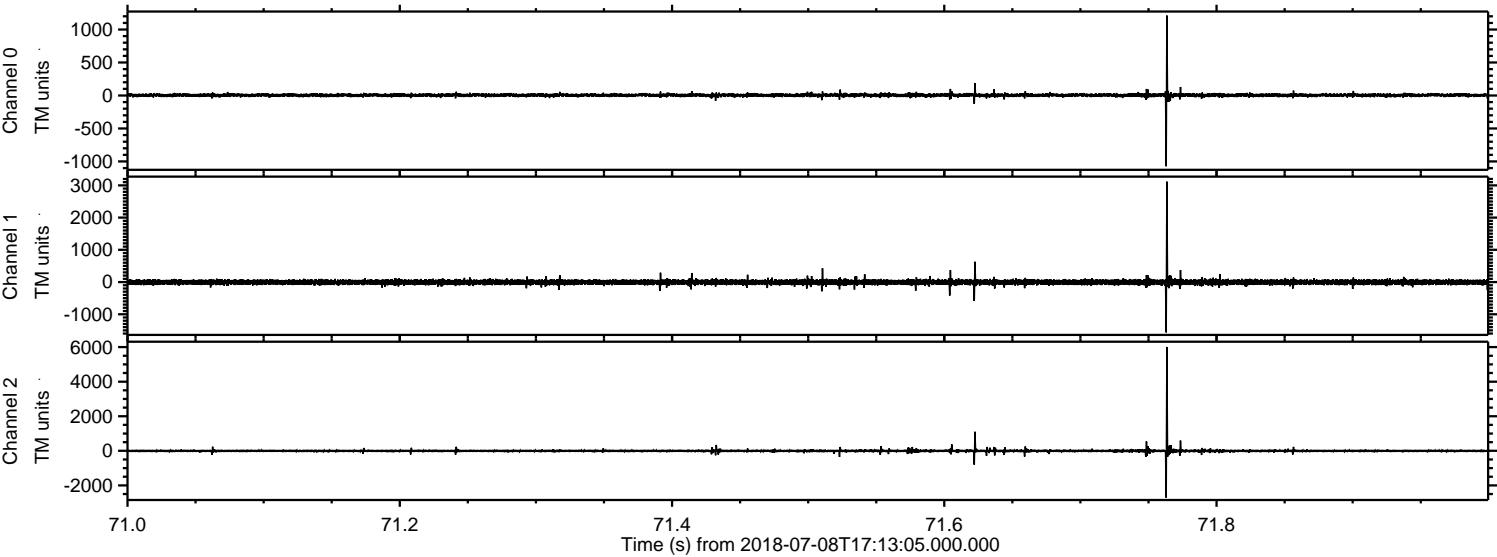
Processed Sun Jul 8 19:20:29 2018 by ELM ver.2012-10-06 from 001__elm20180708_171303__dat00.bin



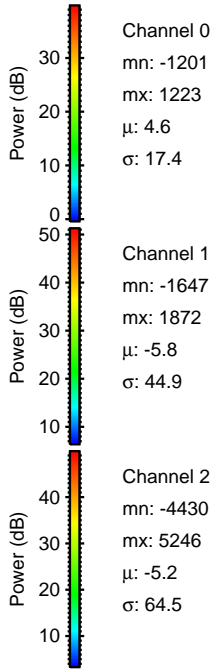
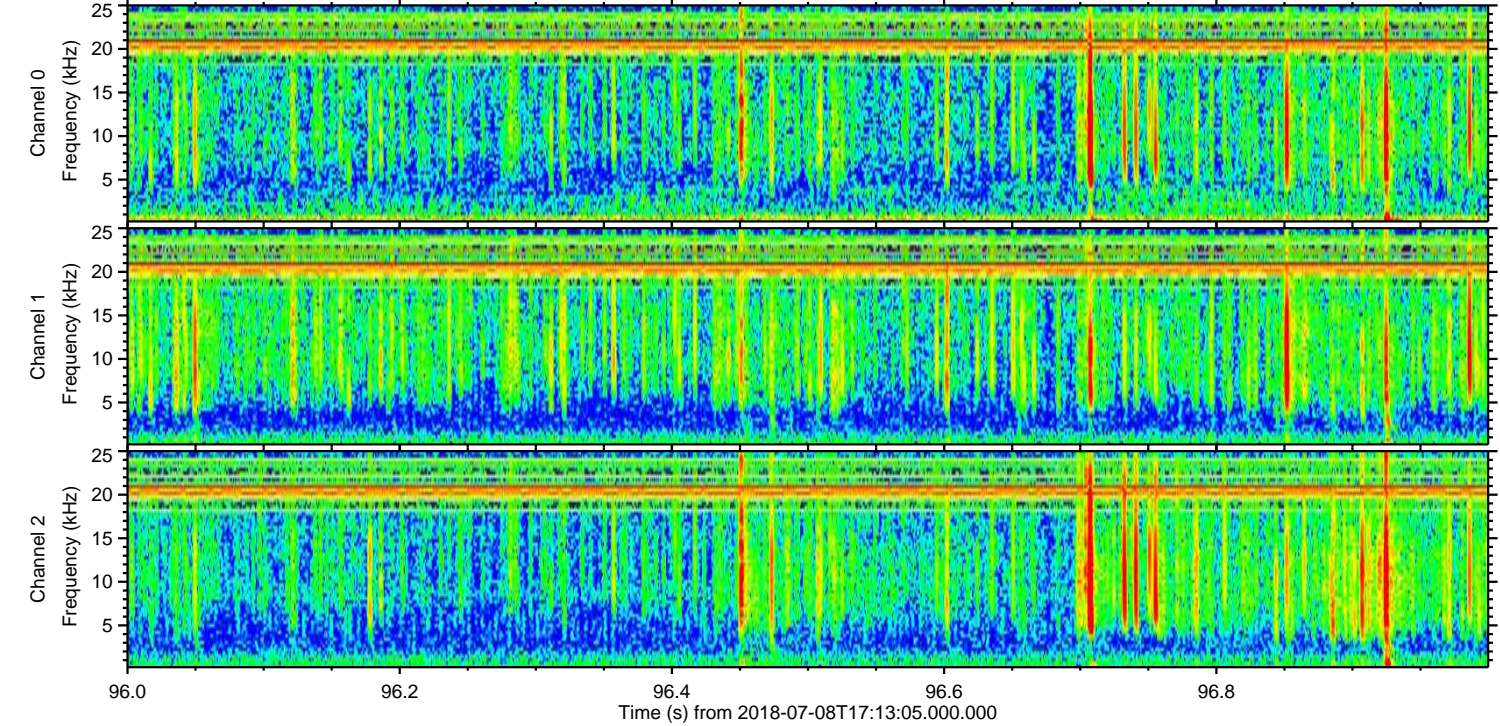
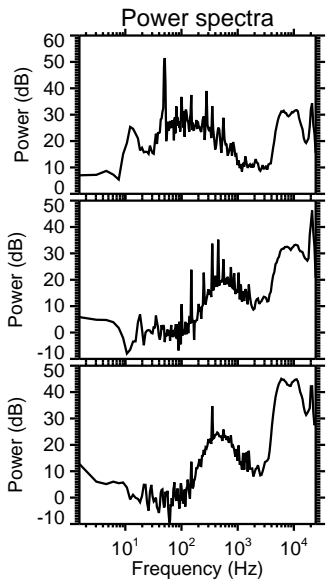
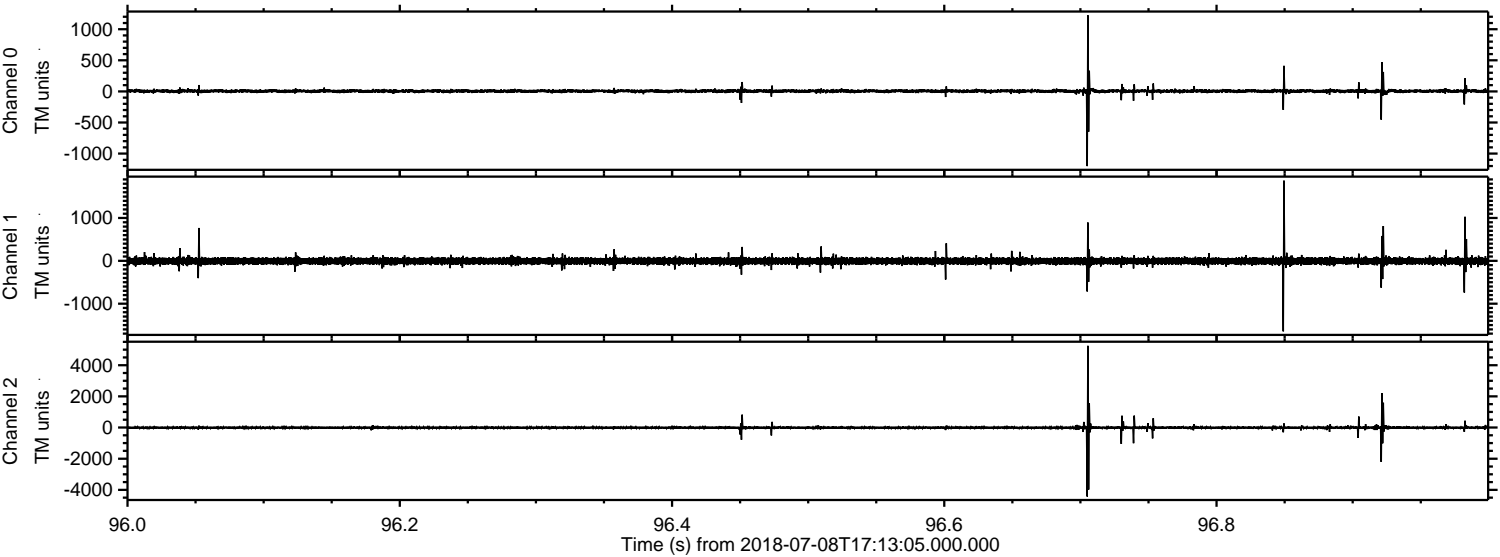
Processed Sun Jul 8 19:20:30 2018 by ELM ver.2012-10-06 from 001__elm20180708_171303__dat00.bin



Processed Sun Jul 8 19:20:31 2018 by ELM ver.2012-10-06 from 001__elm20180708_171303__dat00.bin



Processed Sun Jul 8 19:20:32 2018 by ELM ver.2012-10-06 from 001__elm20180708_171303__dat00.bin



Channel 0
mn: -1201
mx: 1223
 μ : 4.6
 σ : 17.4

Channel 1
mn: -1647
mx: 1872
 μ : -5.8
 σ : 44.9

Channel 2
mn: -4430
mx: 5246
 μ : -5.2
 σ : 64.5

