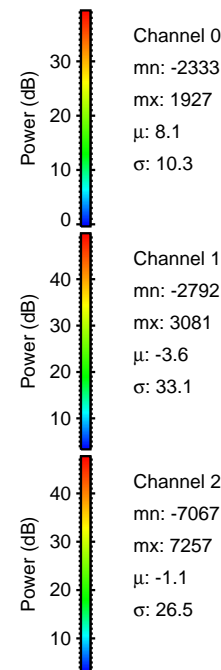
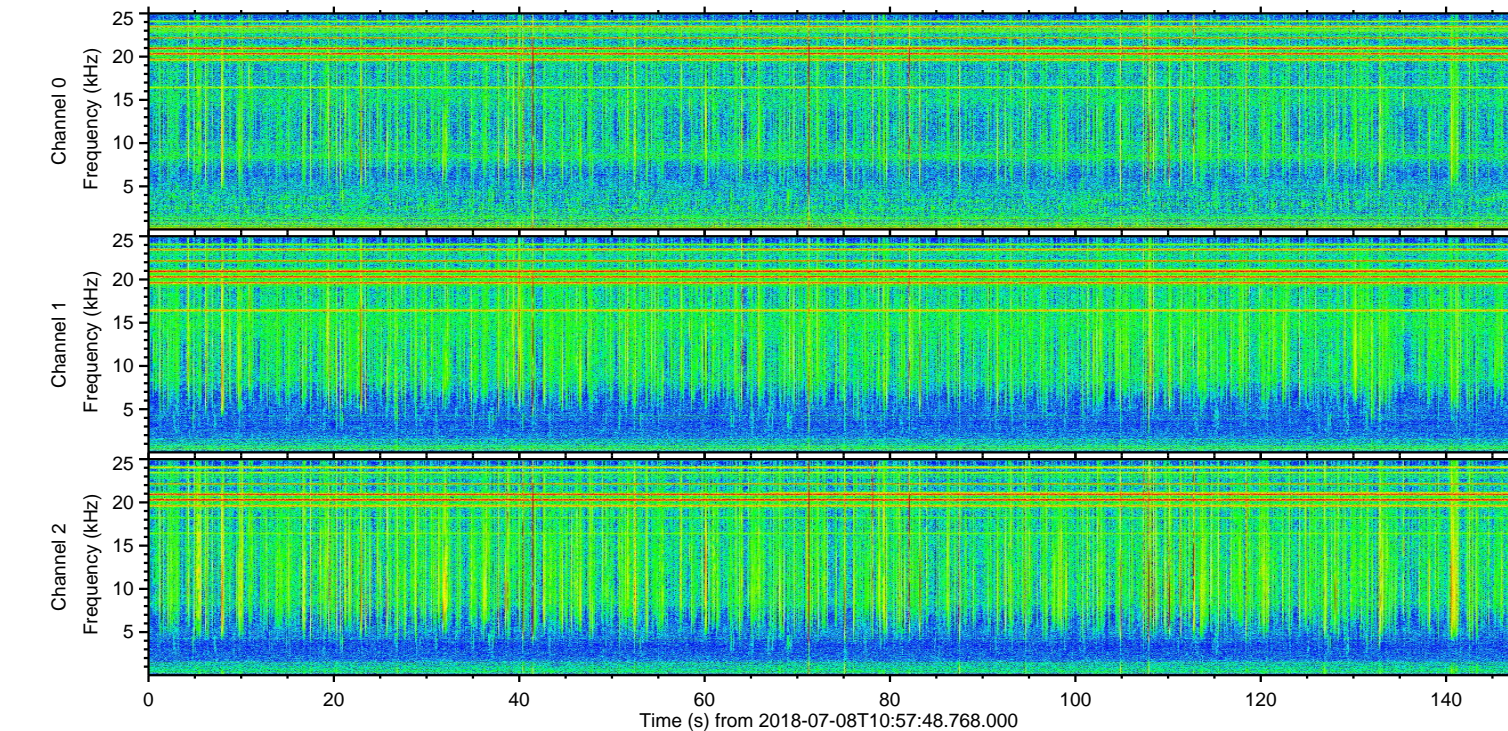
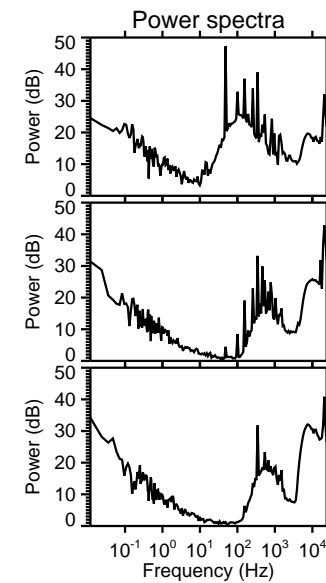
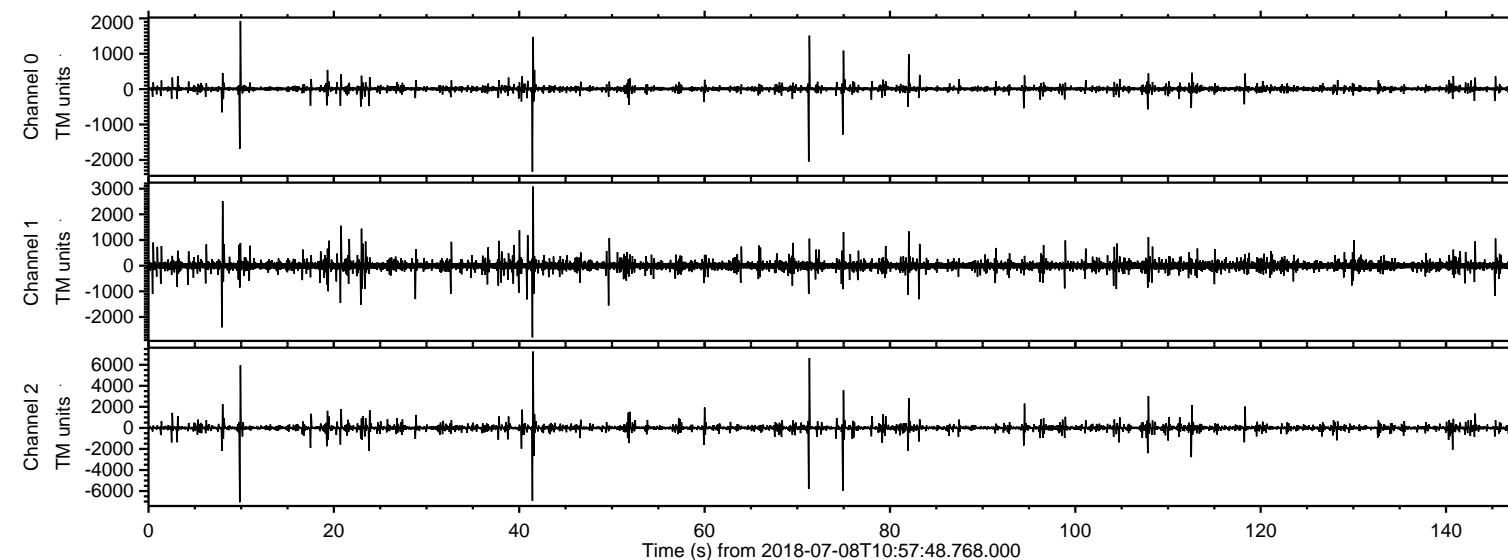
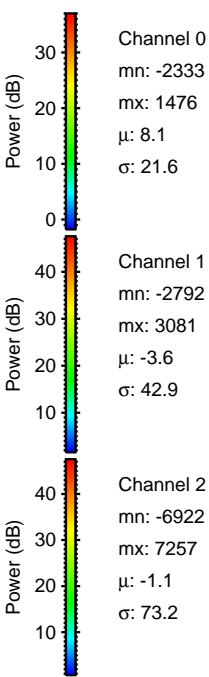
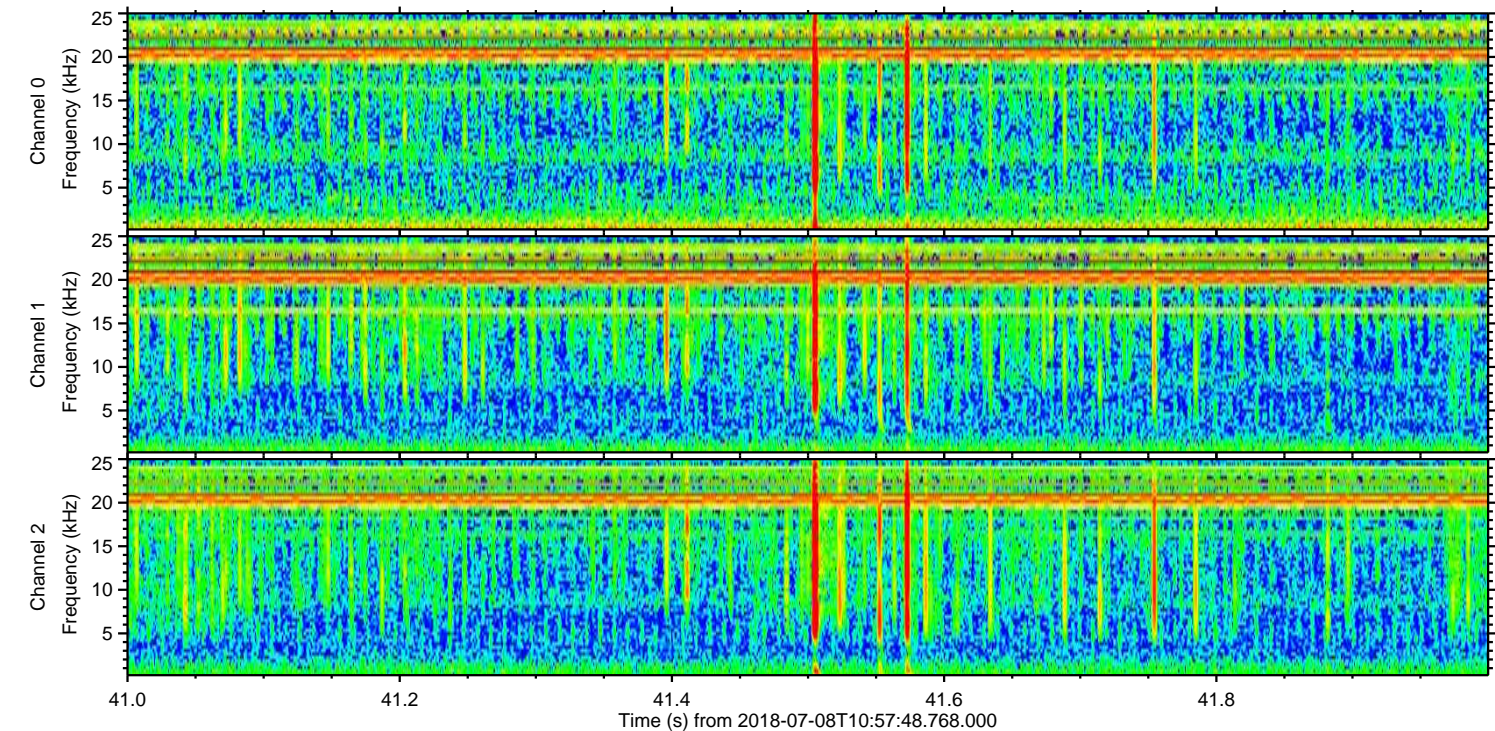
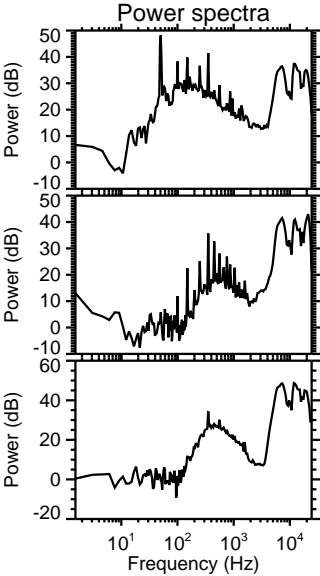
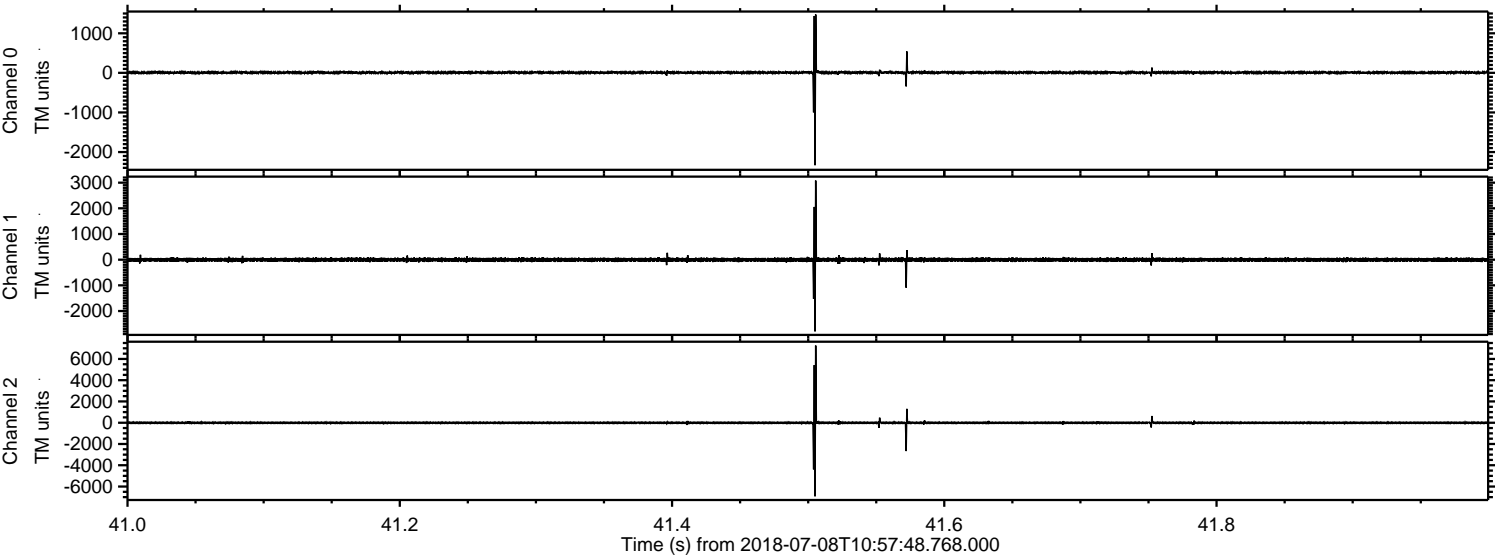


ELMAVAN 3D WAVEFORMS (Measured data sampled at 50 kHz) 51000 packets of 144 samples from 2018-07-08T10:57:48.768.000.

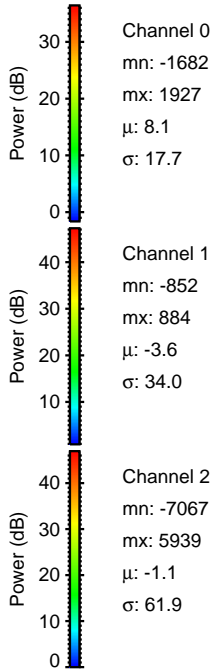
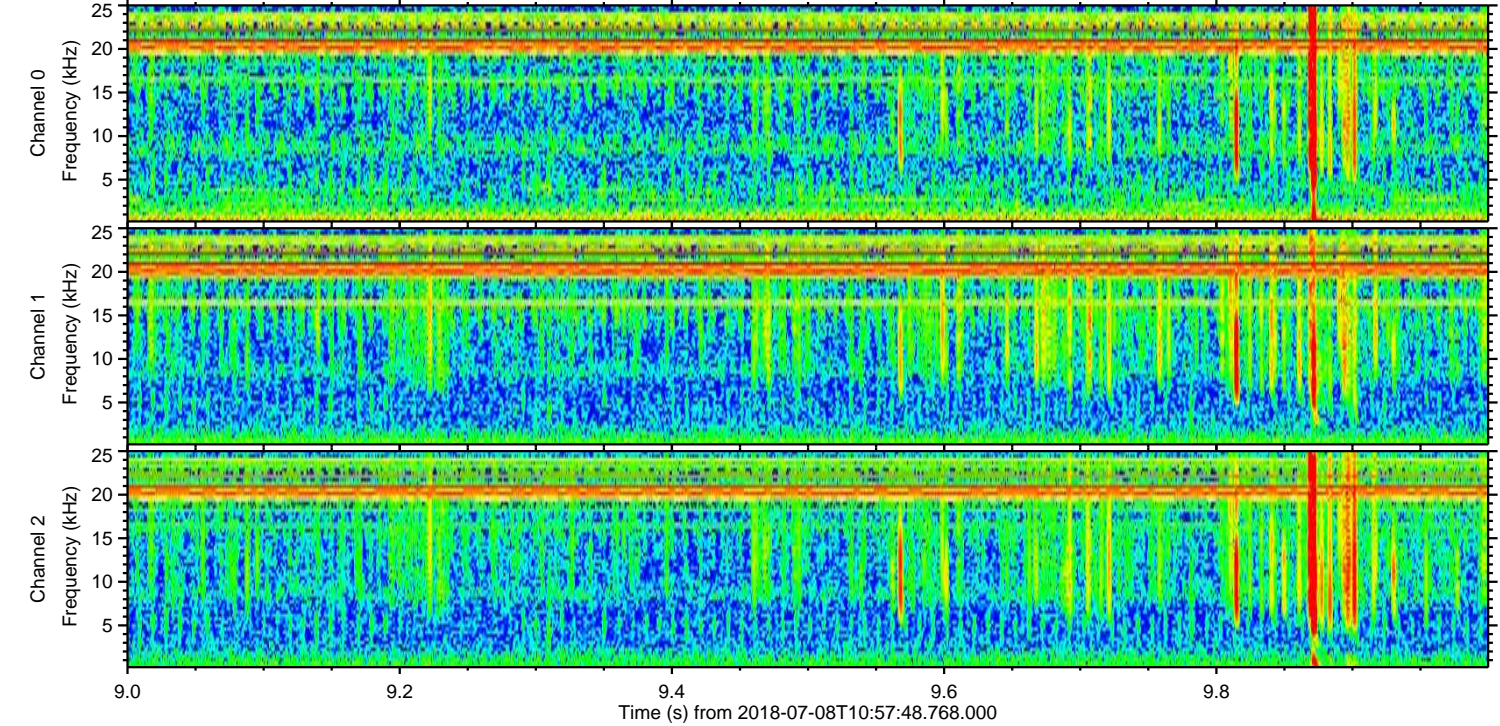
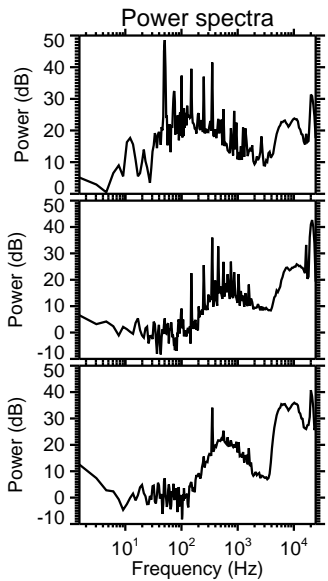
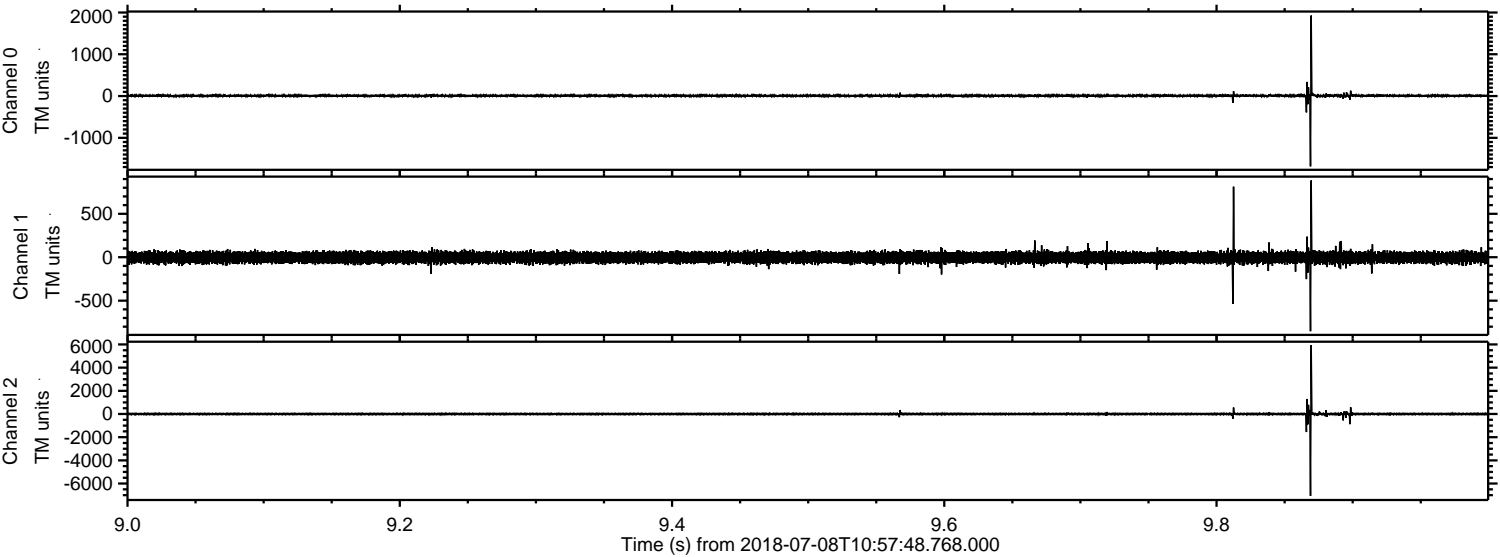
Processed Sun Jul 8 13:05:07 2018 by ELM ver.2012-10-06 from 001__elm20180708_105747__dat00.bin



Processed Sun Jul 8 13:05:14 2018 by ELM ver.2012-10-06 from 001__elm20180708_105747__dat00.bin



Processed Sun Jul 8 13:05:14 2018 by ELM ver.2012-10-06 from 001__elm20180708_105747__dat00.bin

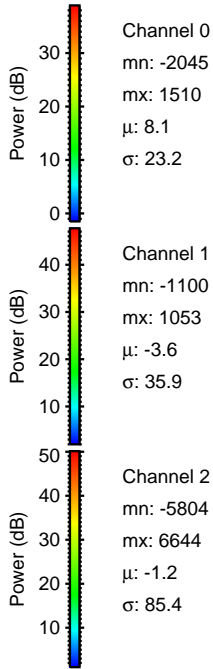
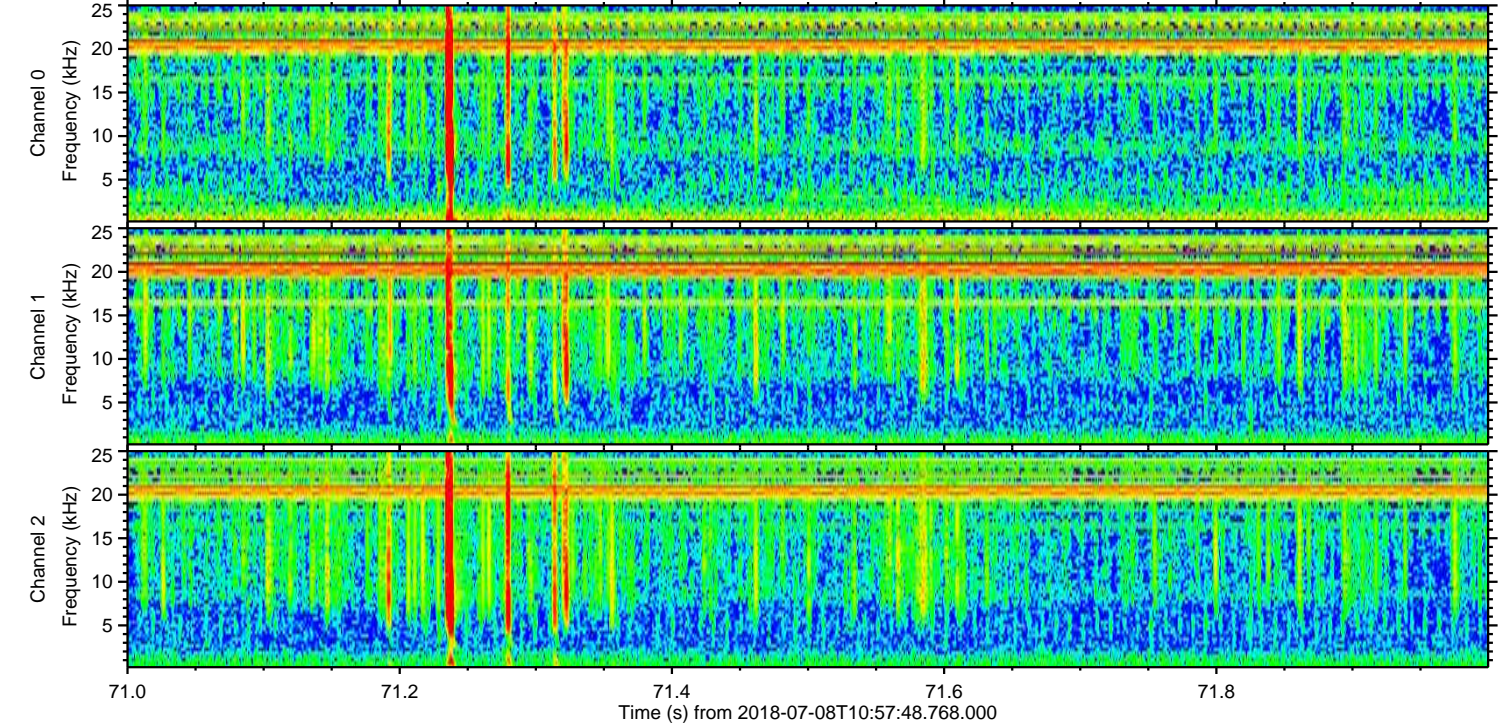
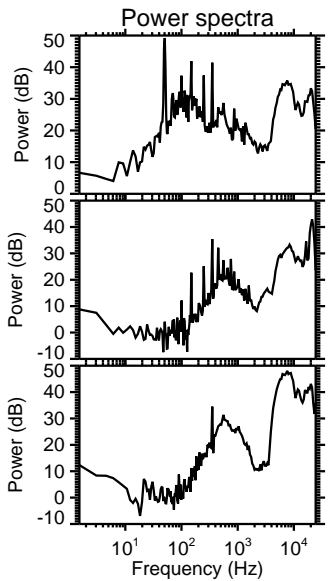
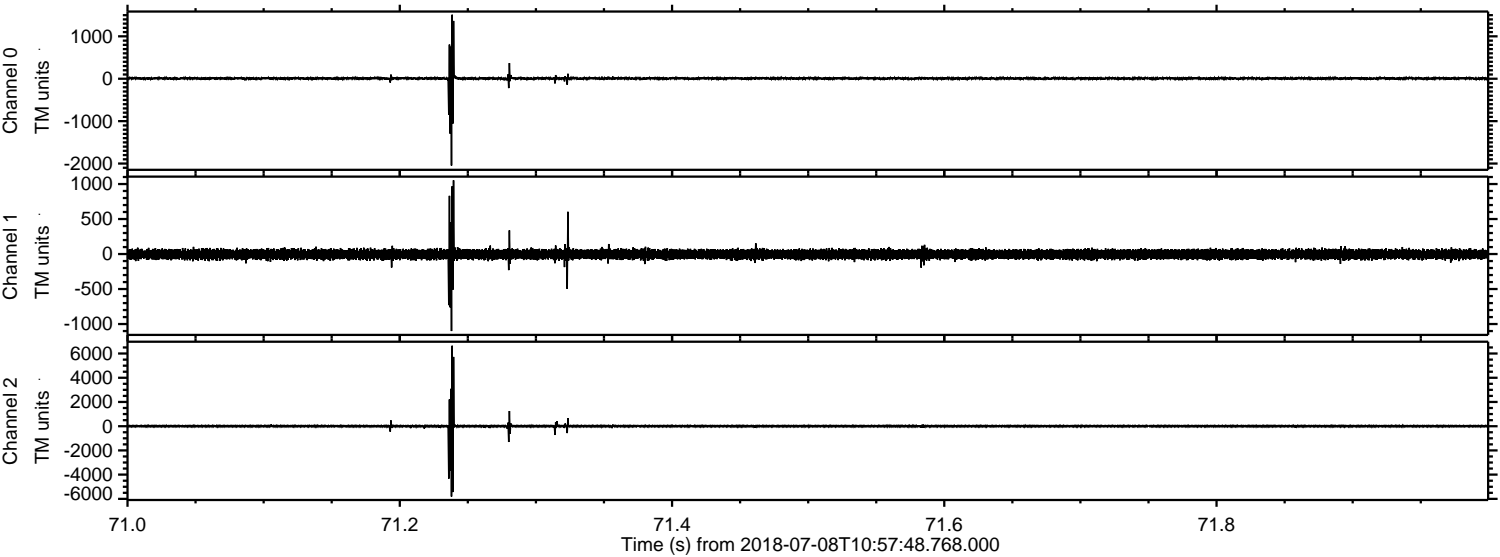


Channel 0
mn: -1682
mx: 1927
 μ : 8.1
 σ : 17.7

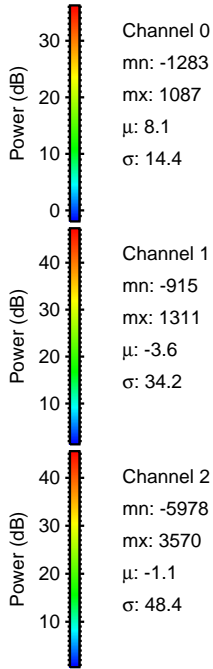
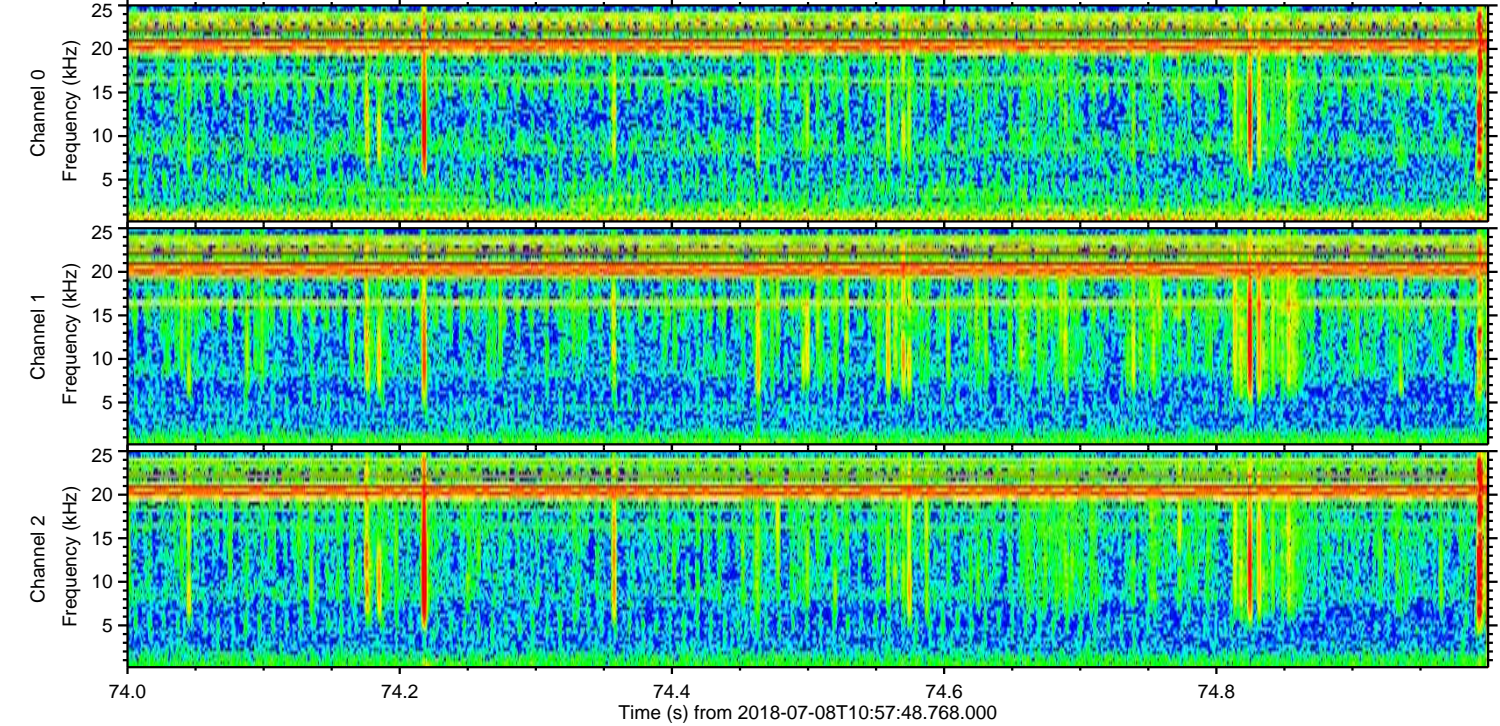
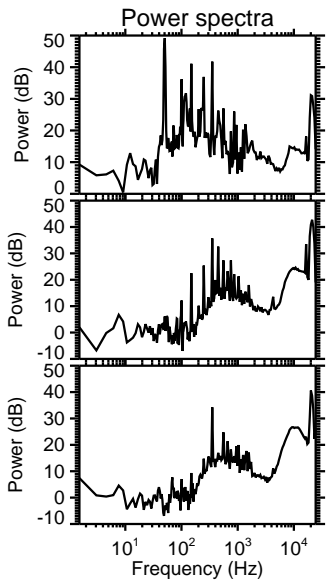
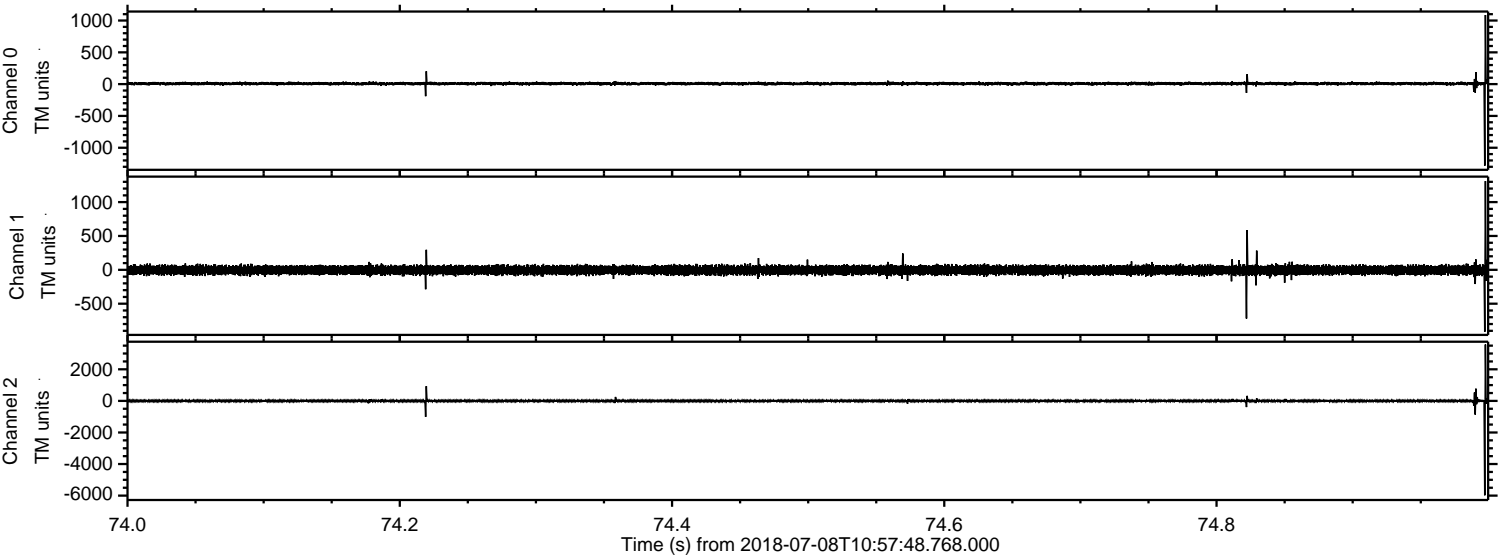
Channel 1
mn: -852
mx: 884
 μ : -3.6
 σ : 34.0

Channel 2
mn: -7067
mx: 5939
 μ : -1.1
 σ : 61.9

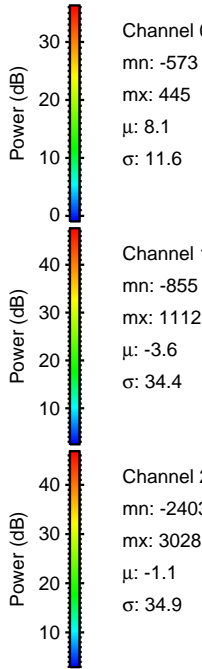
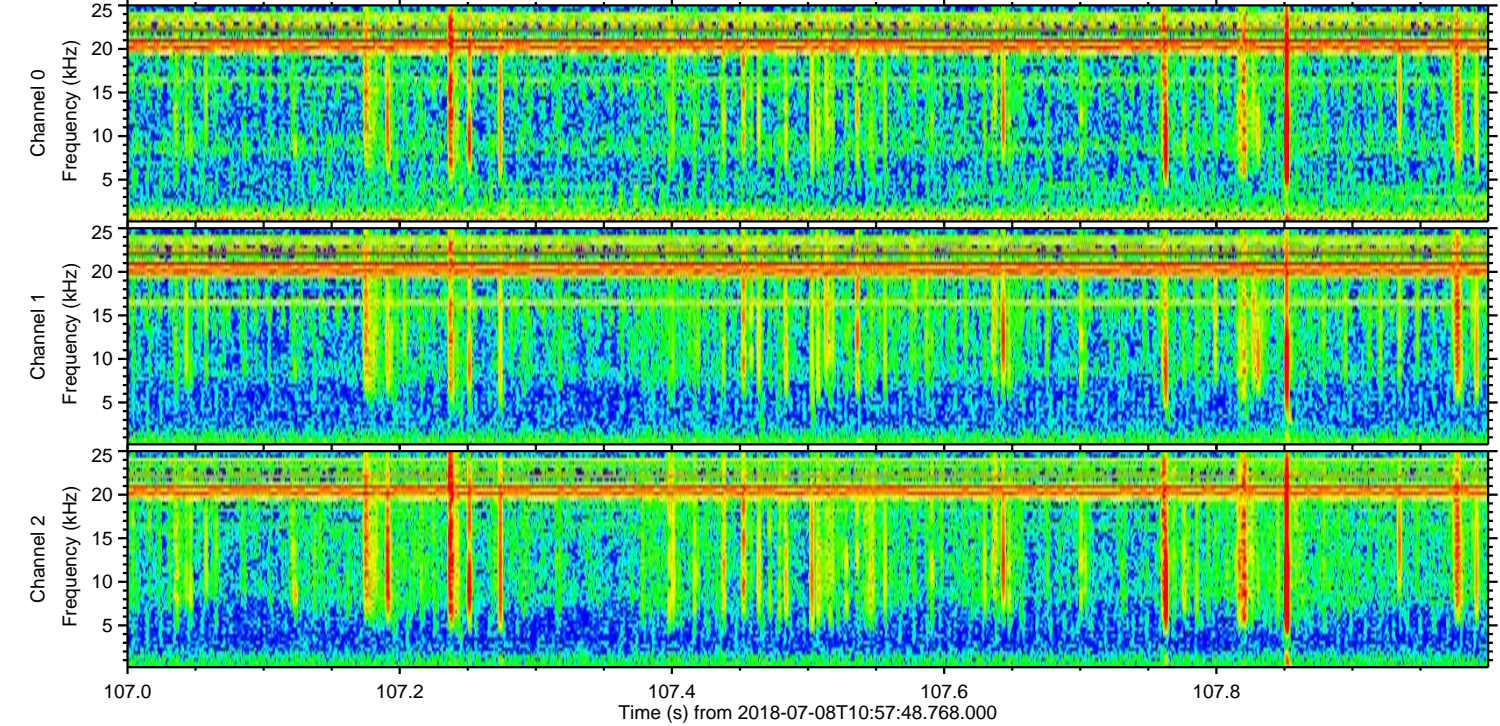
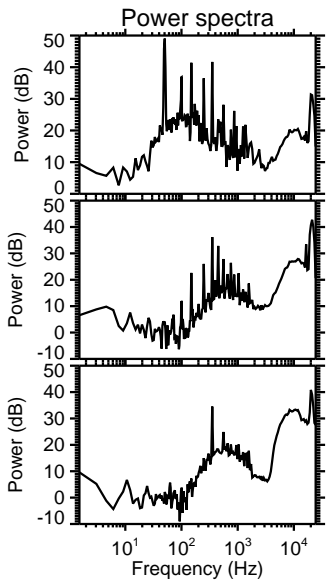
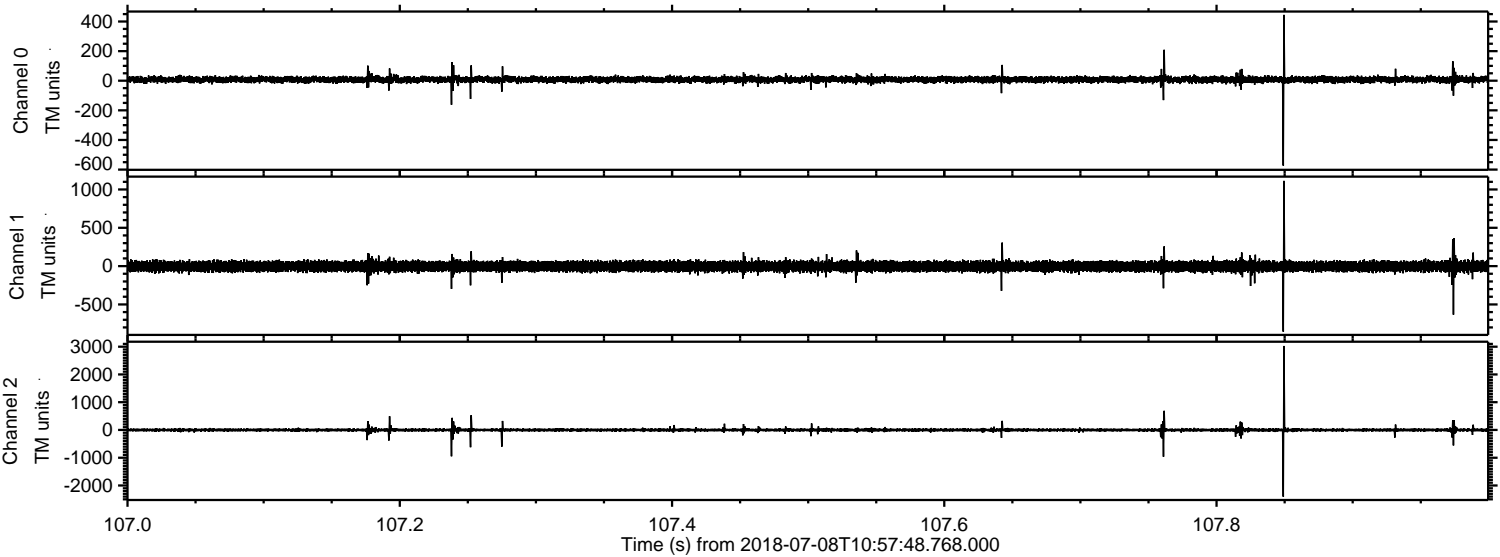
Processed Sun Jul 8 13:05:15 2018 by ELM ver.2012-10-06 from 001__elm20180708_105747__dat00.bin



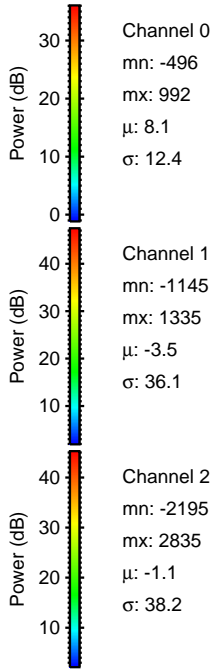
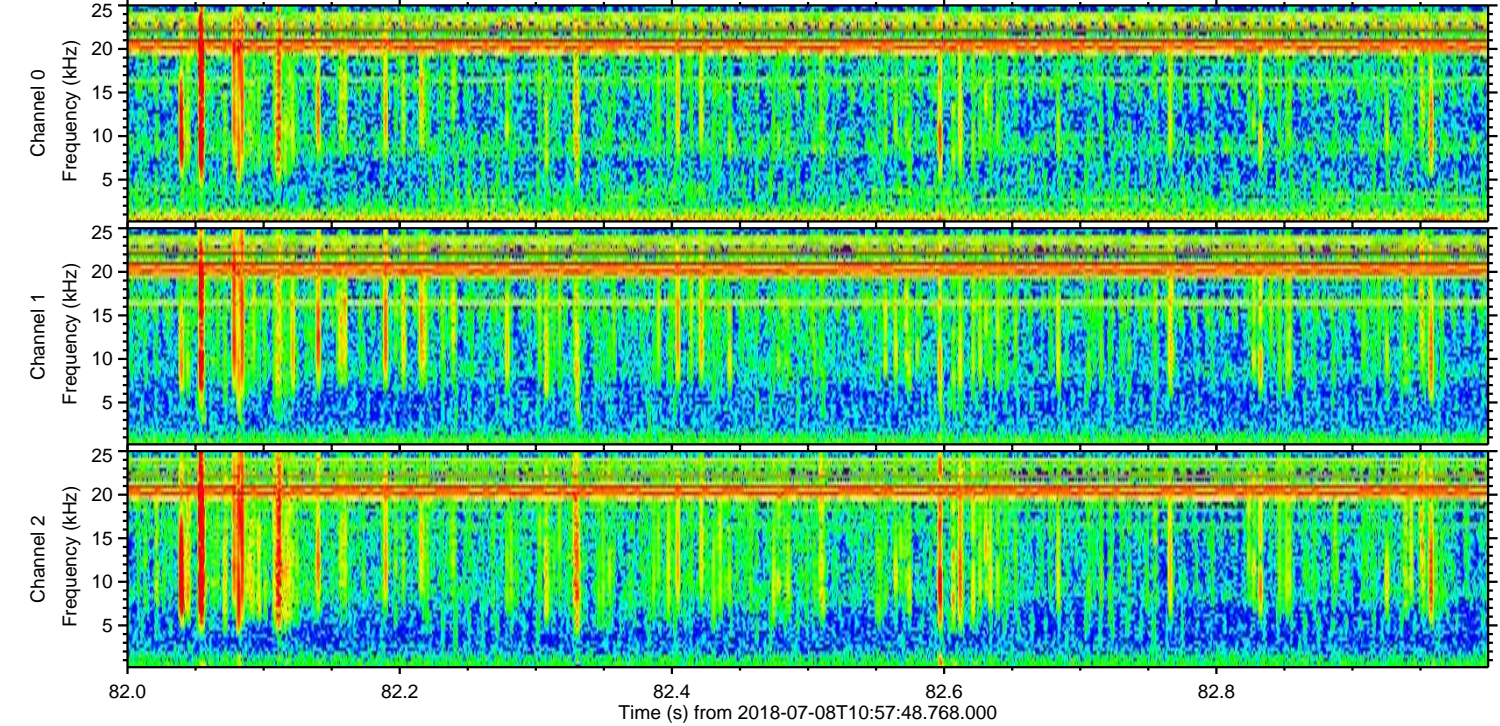
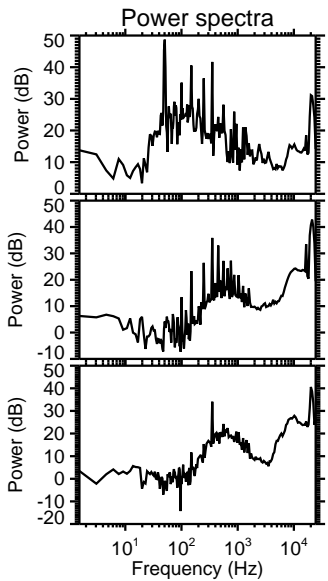
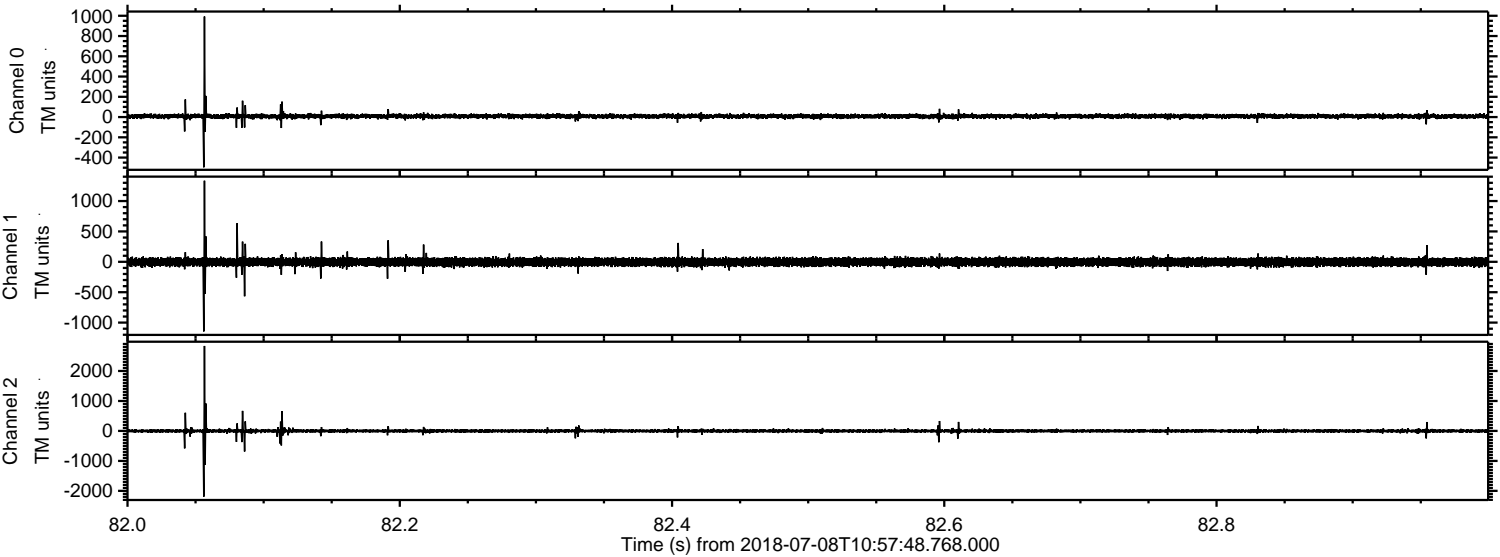
Processed Sun Jul 8 13:05:16 2018 by ELM ver.2012-10-06 from 001__elm20180708_105747__dat00.bin



Processed Sun Jul 8 13:05:16 2018 by ELM ver.2012-10-06 from 001__elm20180708_105747__dat00.bin

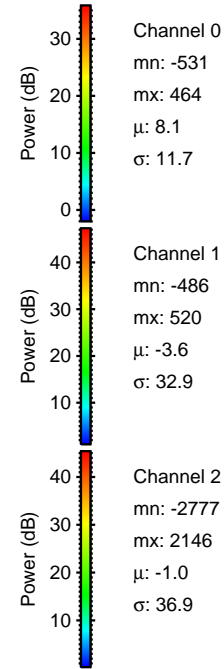
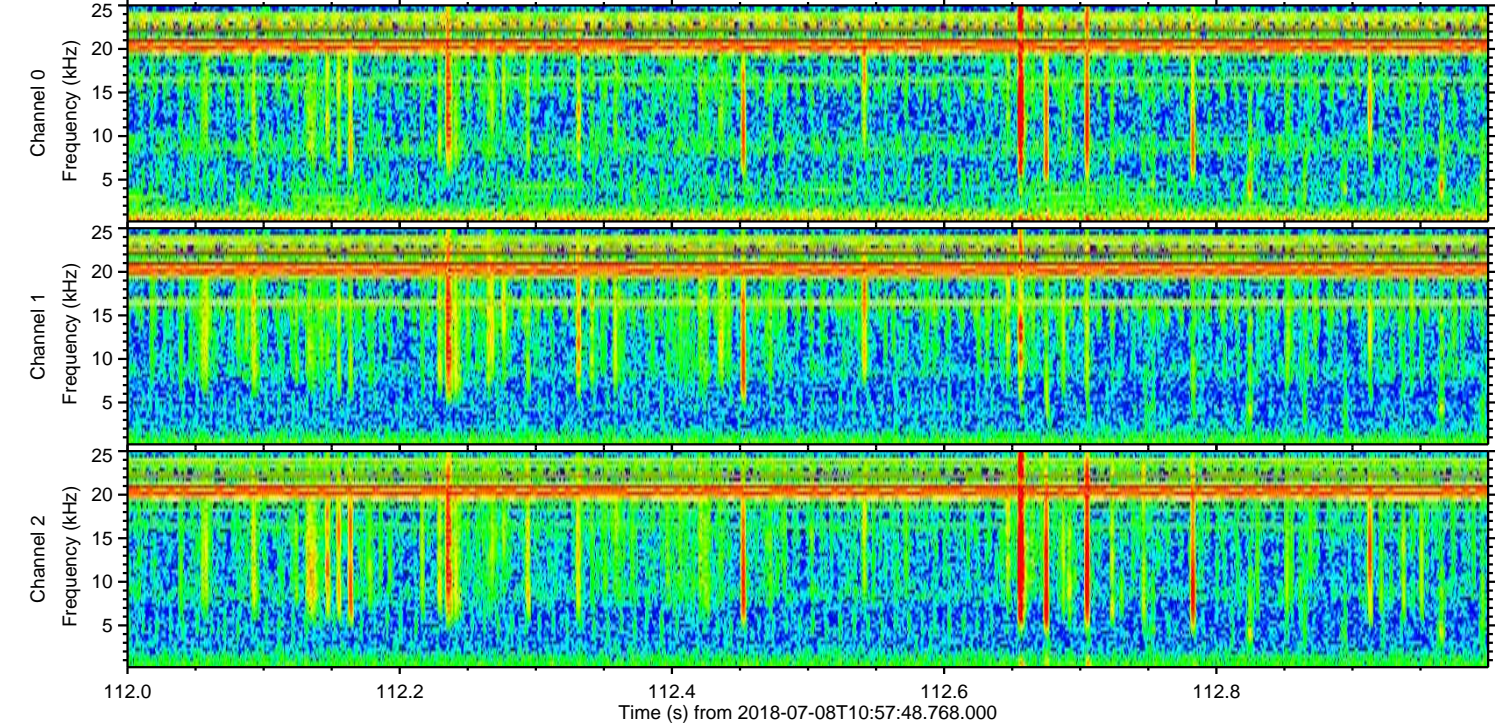
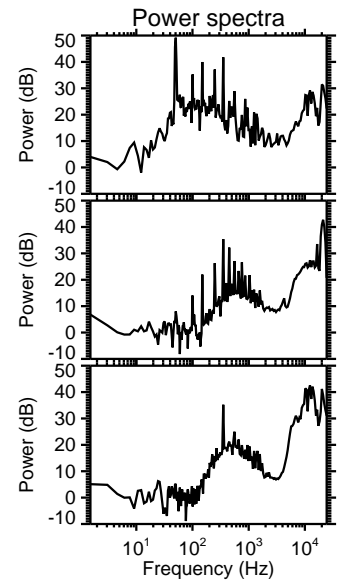
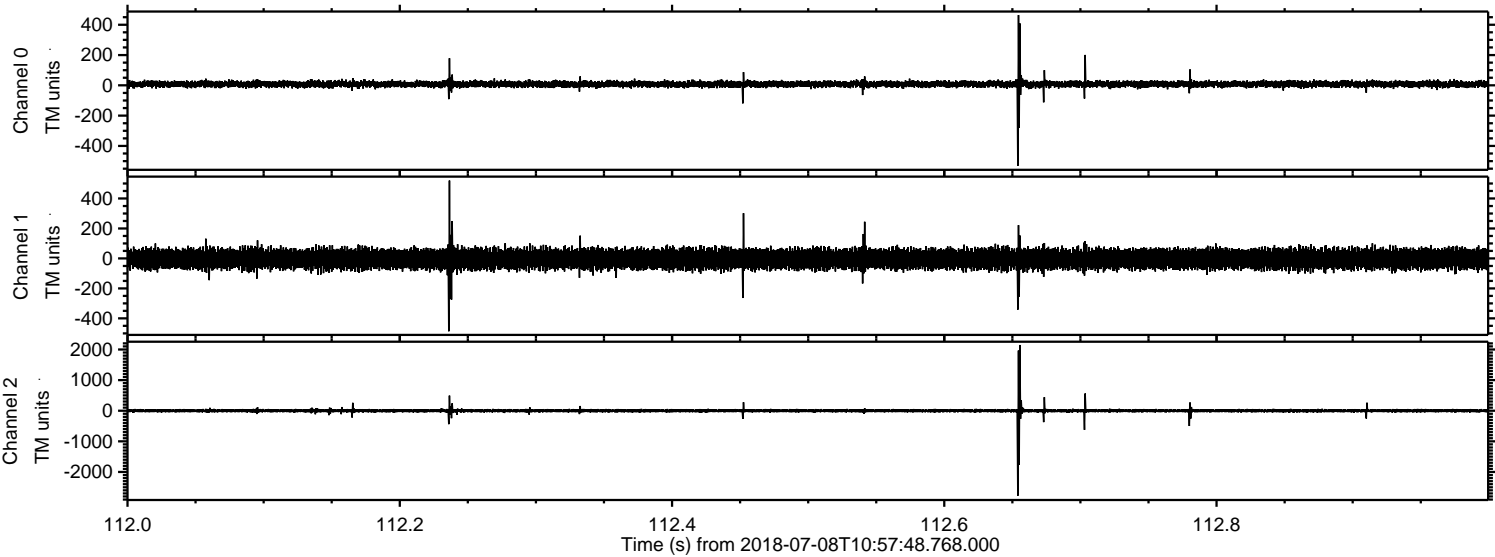


Processed Sun Jul 8 13:05:17 2018 by ELM ver.2012-10-06 from 001__elm20180708_105747__dat00.bin



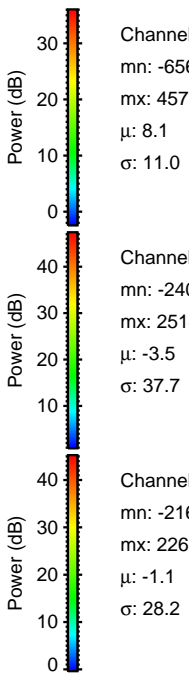
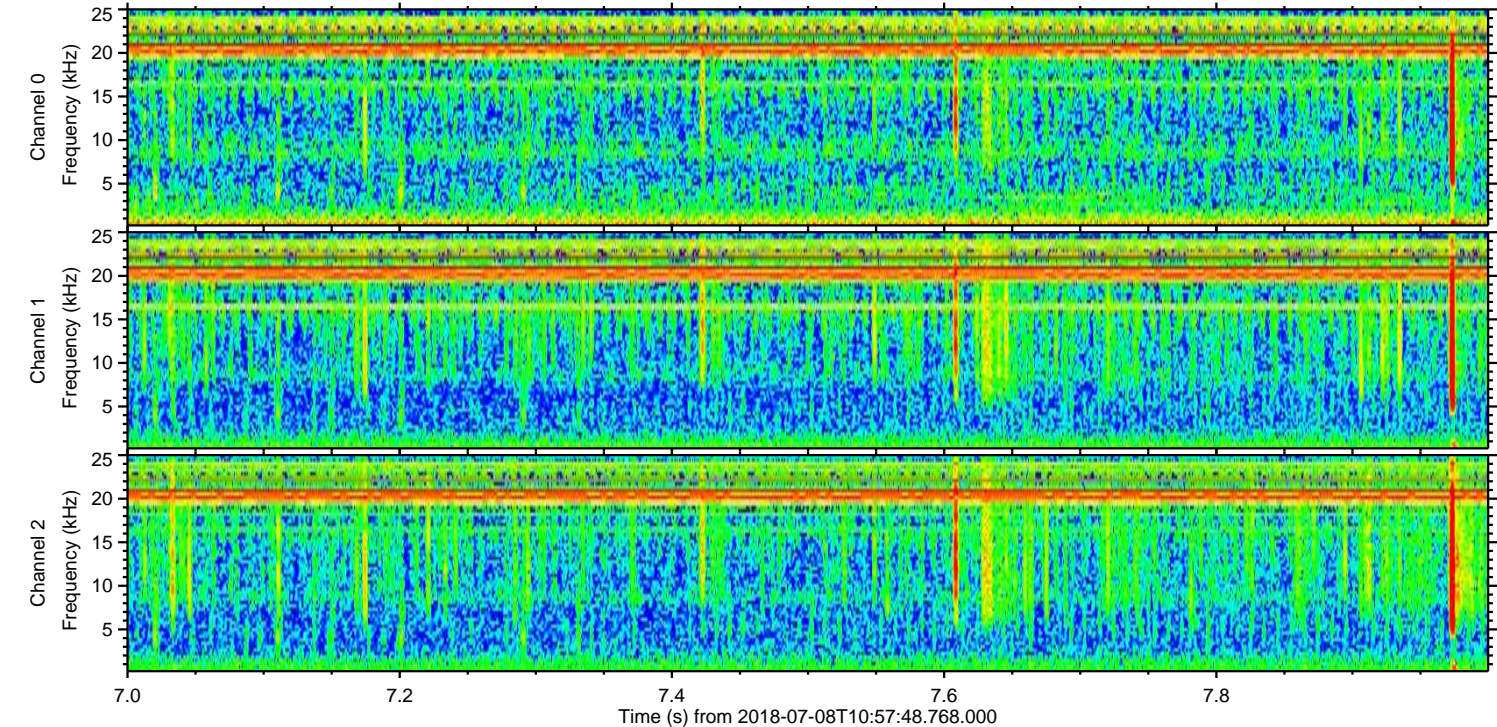
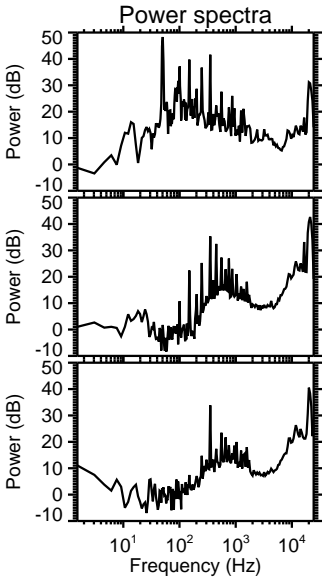
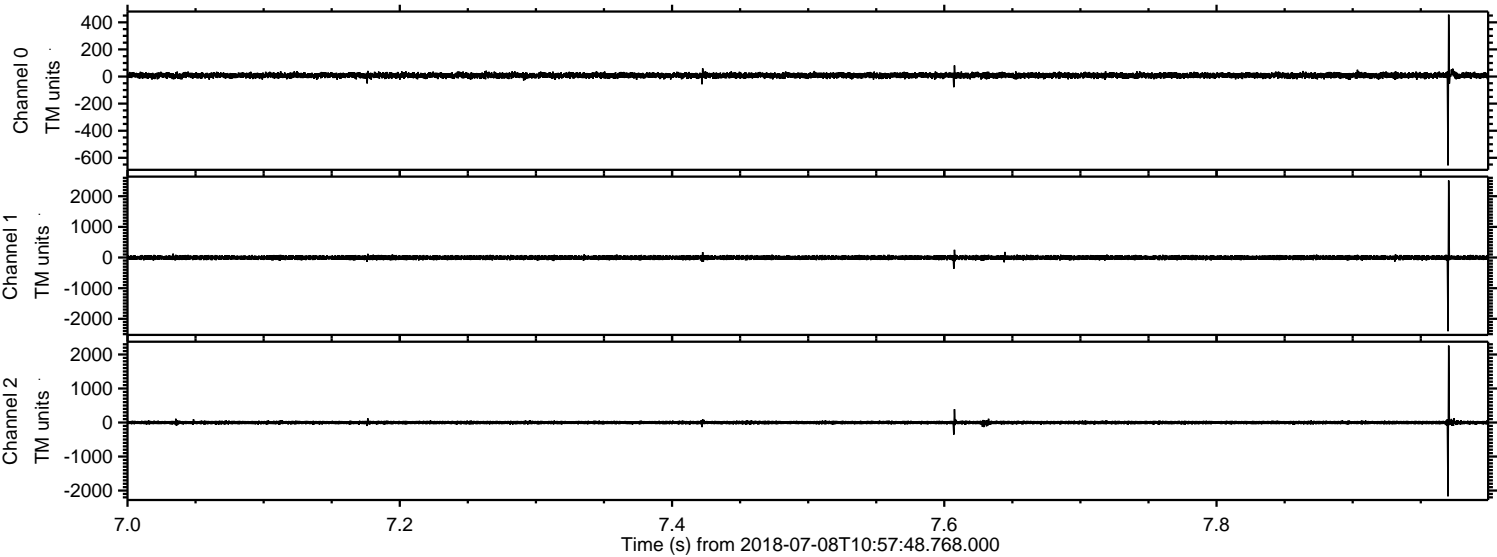
ELMAVAN 3D WAVEFORMS (Measured data sampled at 50 kHz) 51000 packets of 144 samples from 2018-07-08T10:57:48.768.000. Part 113/147

Processed Sun Jul 8 13:05:18 2018 by ELM ver.2012-10-06 from 001__elm20180708_105747__dat00.bin



ELMAVAN 3D WAVEFORMS (Measured data sampled at 50 kHz) 51000 packets of 144 samples from 2018-07-08T10:57:48.768.000. Part 8/147

Processed Sun Jul 8 13:05:19 2018 by ELM ver.2012-10-06 from 001__elm20180708_105747__dat00.bin



Channel 0
mn: -656
mx: 457
 μ : 8.1
 σ : 11.0

Channel 1
mn: -2405
mx: 2514
 μ : -3.5
 σ : 37.7

Channel 2
mn: -2169
mx: 2262
 μ : -1.1
 σ : 28.2

Processed Sun Jul 8 13:05:19 2018 by ELM ver.2012-10-06 from 001__elm20180708_105747__dat00.bin

