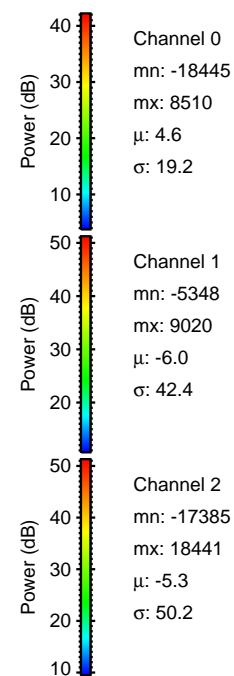
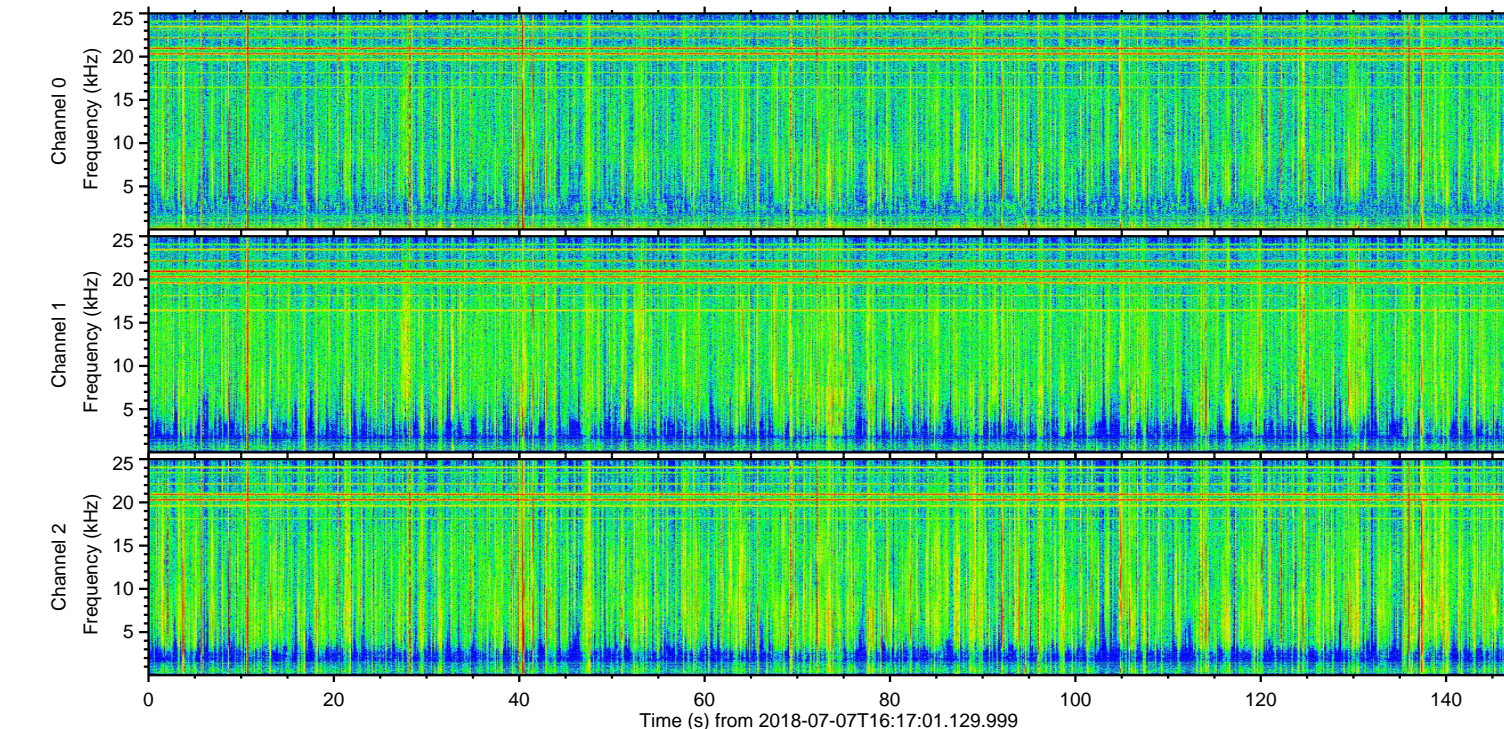
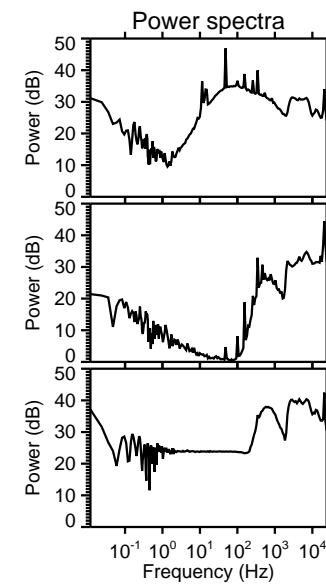
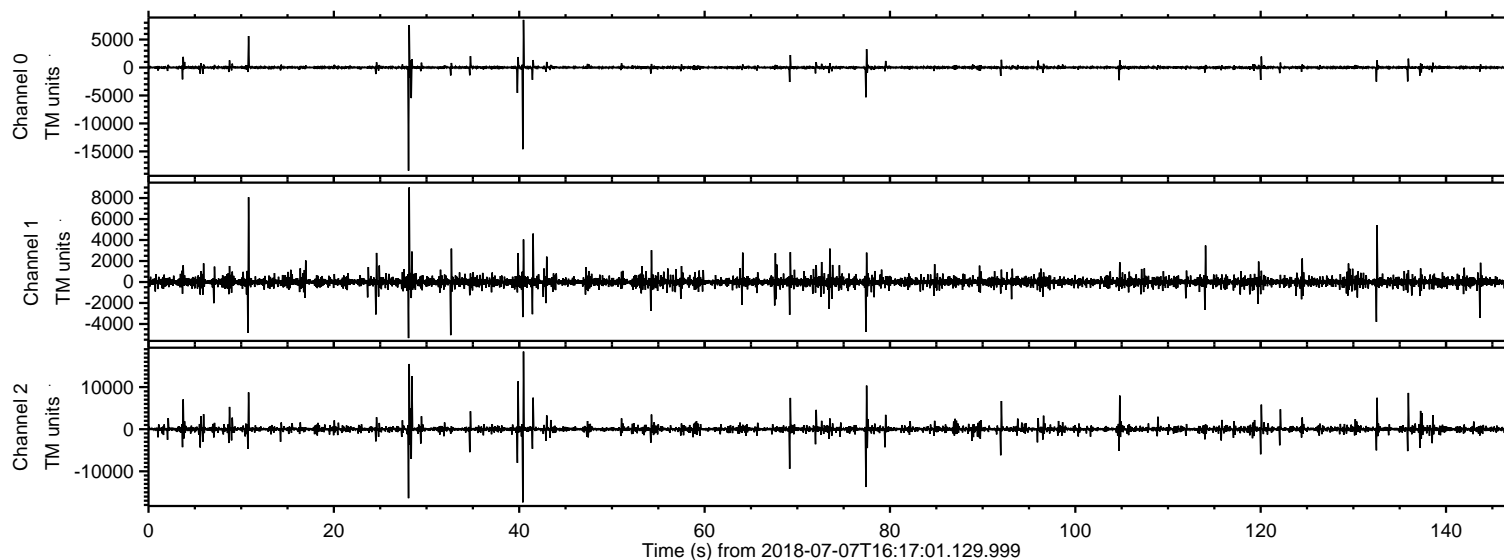


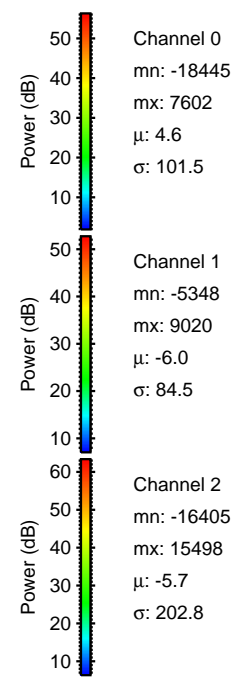
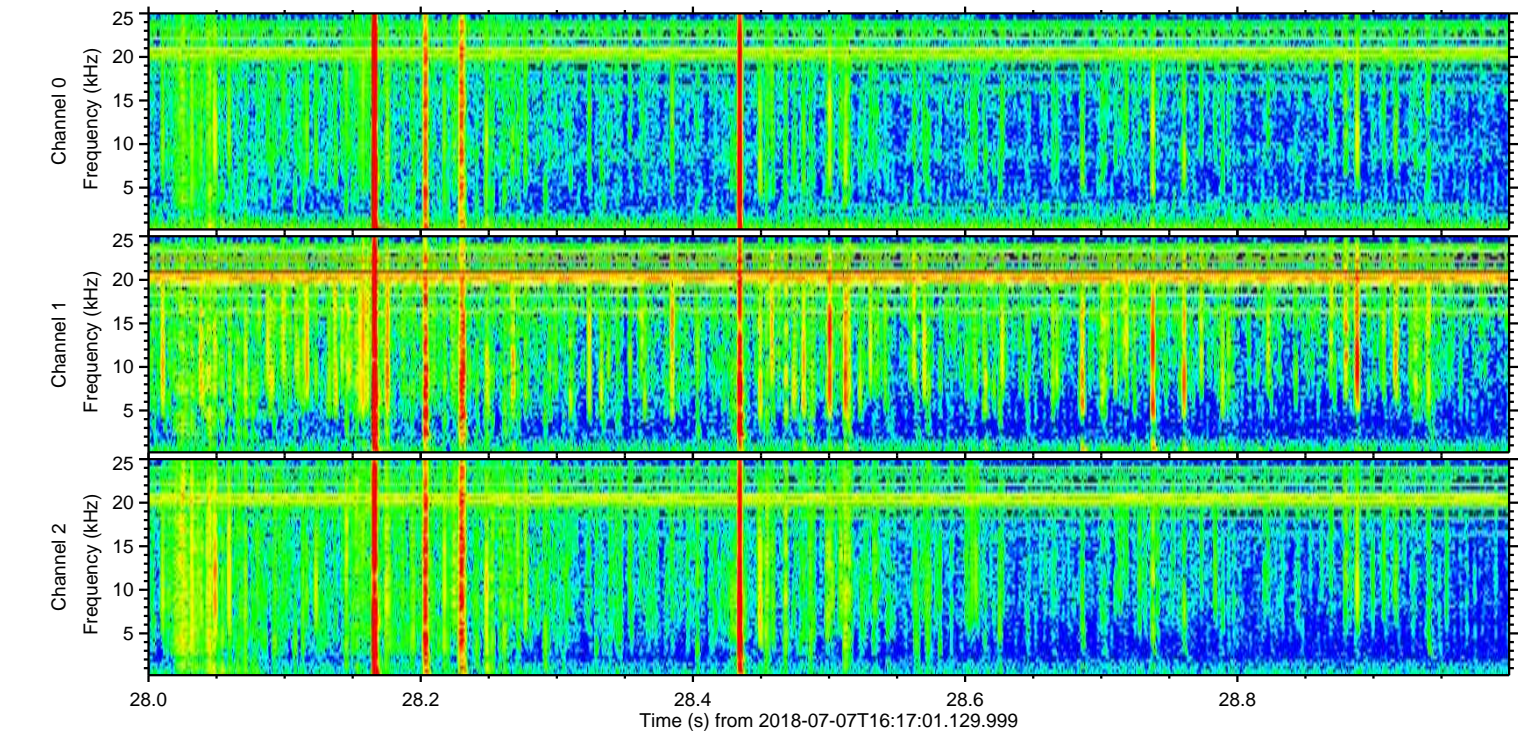
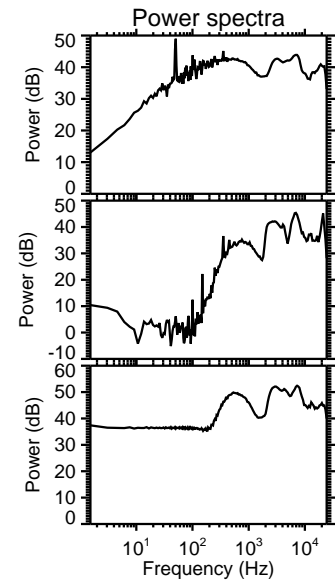
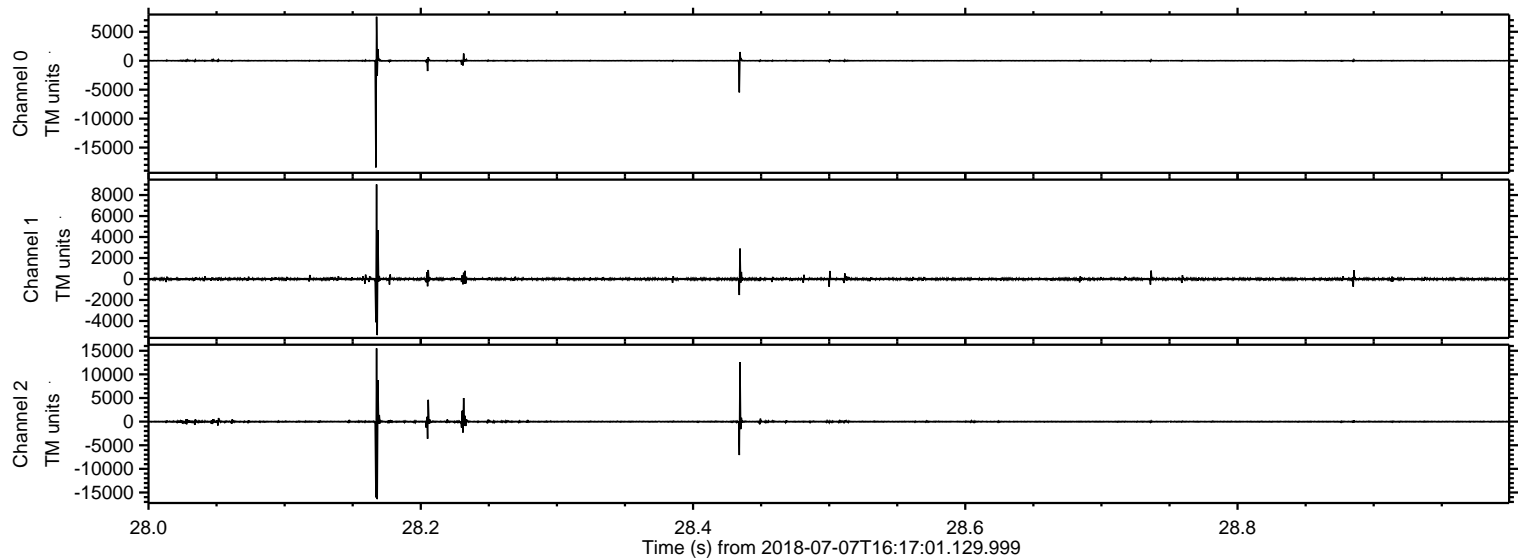
ELMAVAN 3D WAVEFORMS (Measured data sampled at 50 kHz) 51000 packets of 144 samples from 2018-07-07T16:17:01.129.999.

Processed Sat Jul 7 18:24:40 2018 by ELM ver.2012-10-06 from 001\_\_elm20180707\_161700\_\_dat00.bin



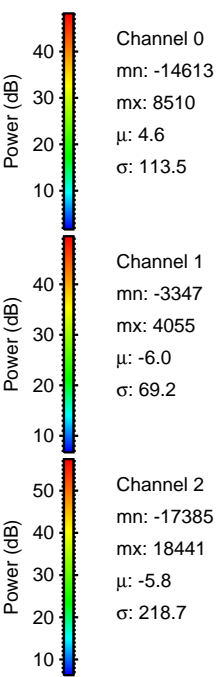
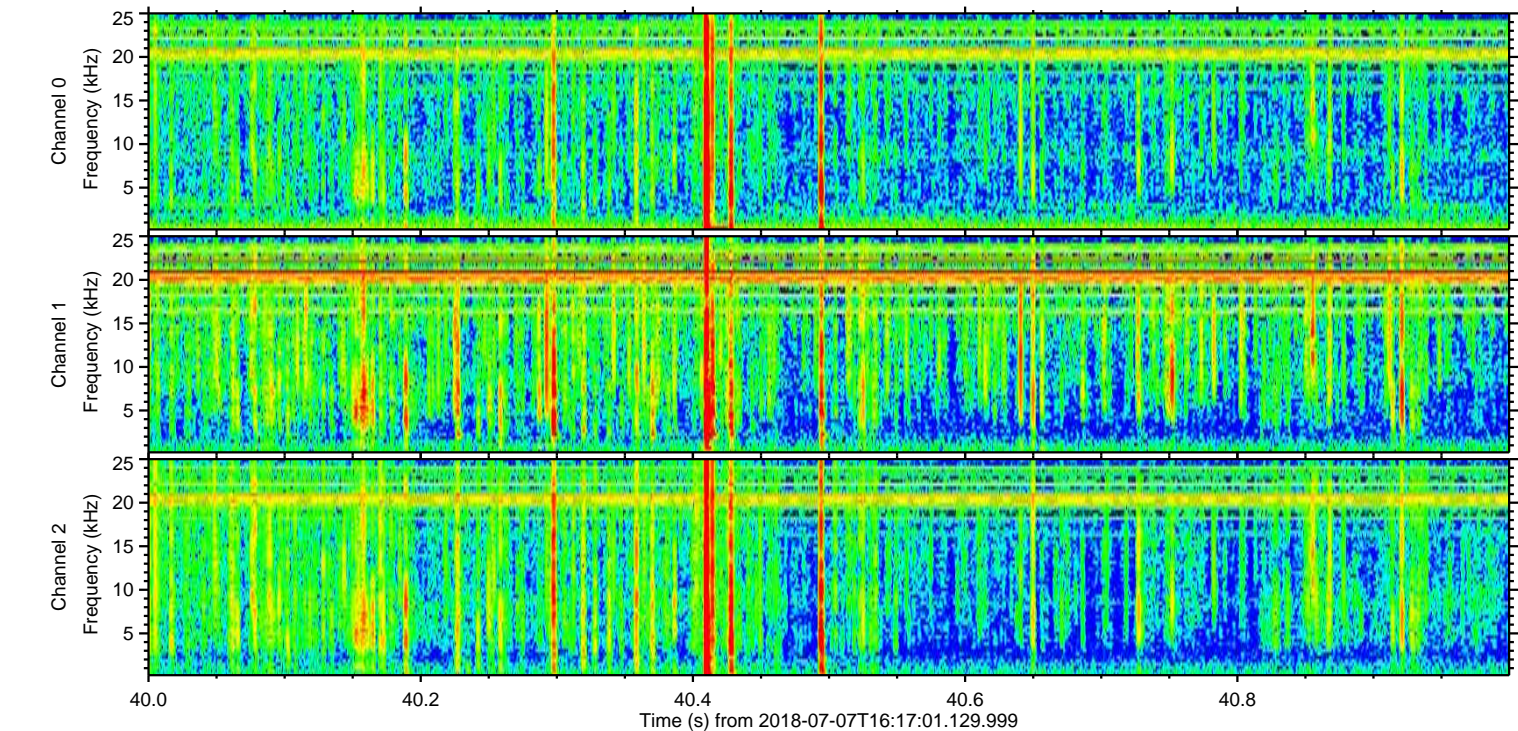
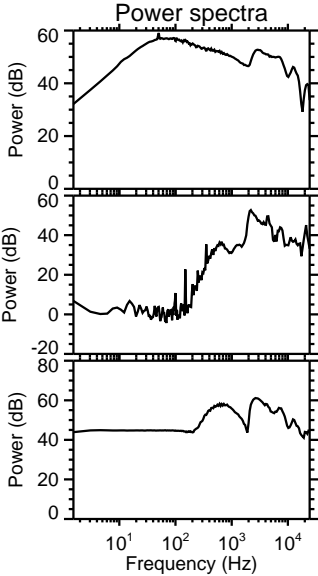
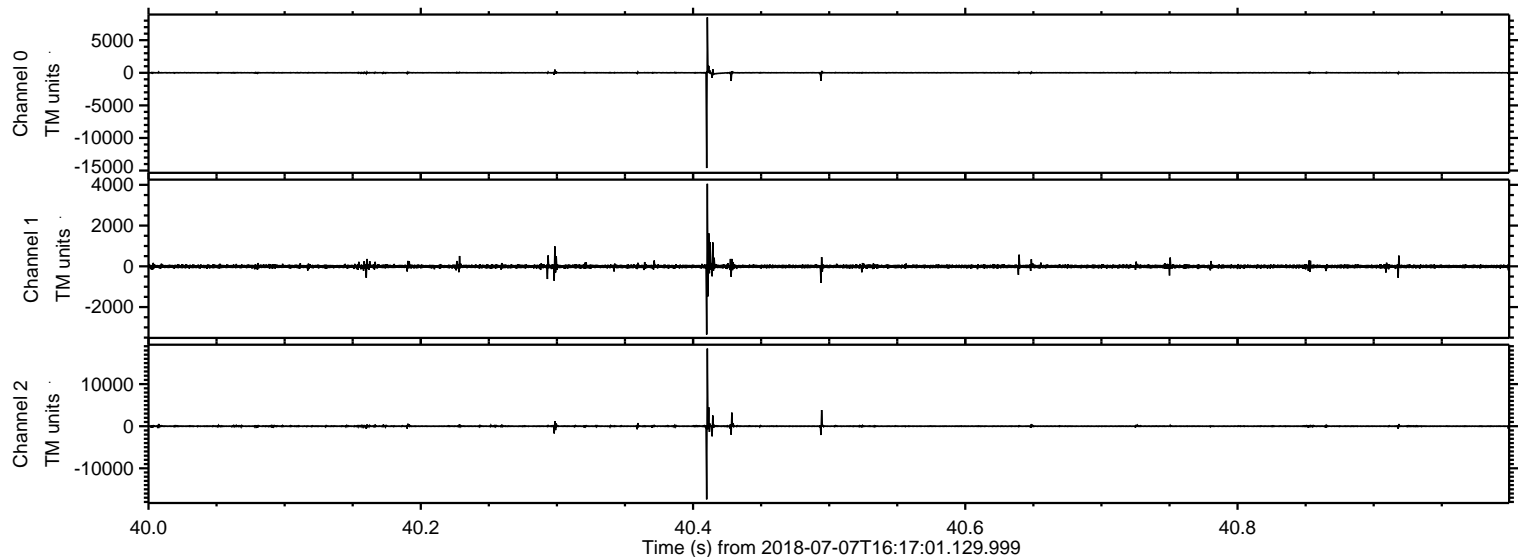


Processed Sat Jul 7 18:24:46 2018 by ELM ver.2012-10-06 from 001\_\_elm20180707\_161700\_\_dat00.bin



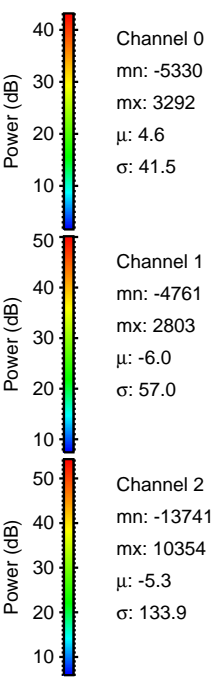
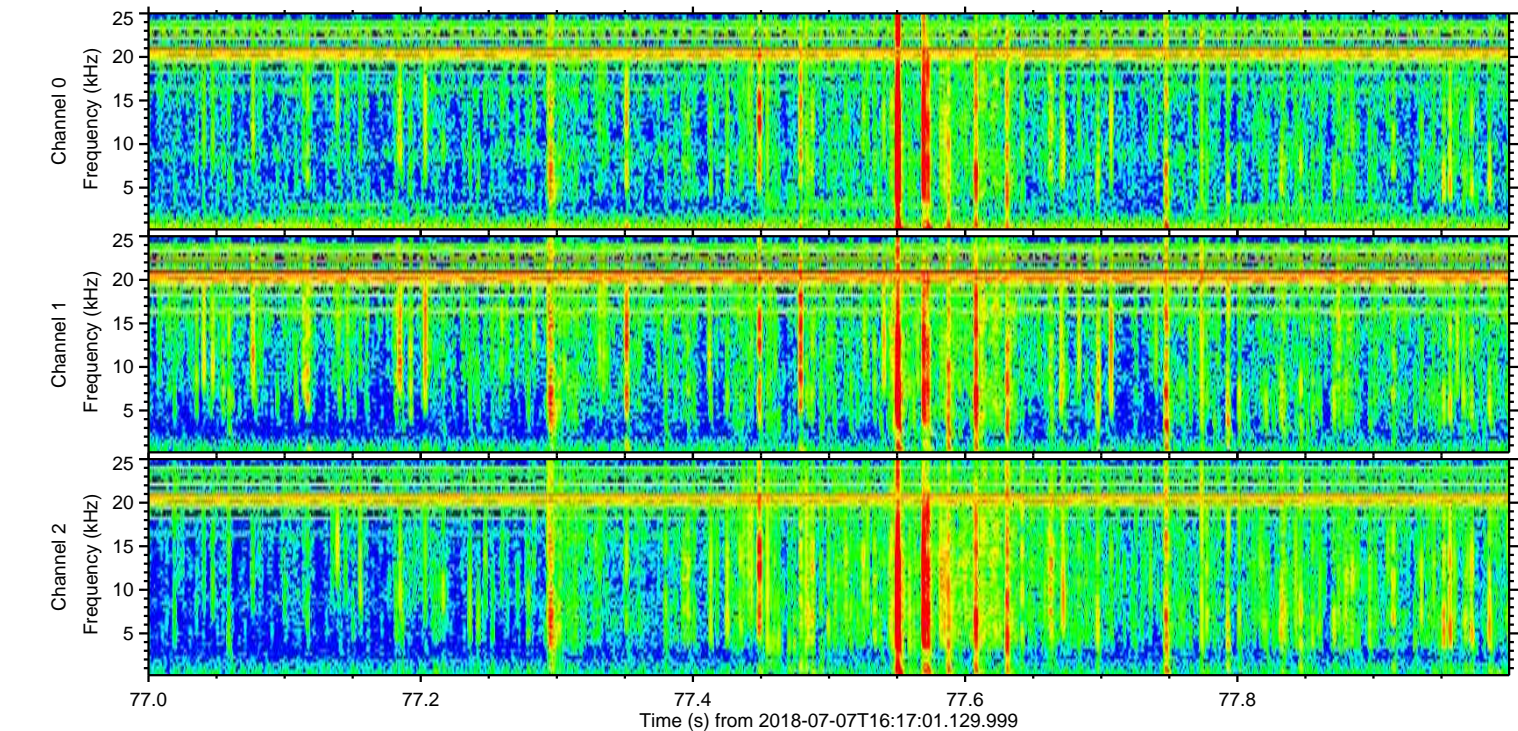
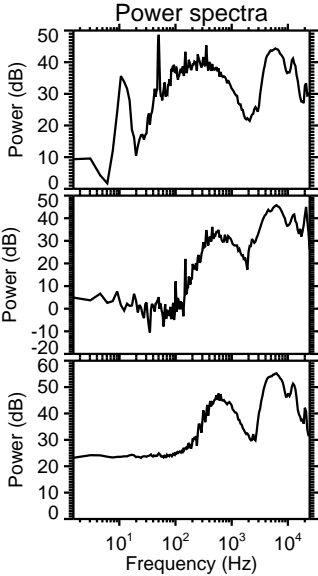
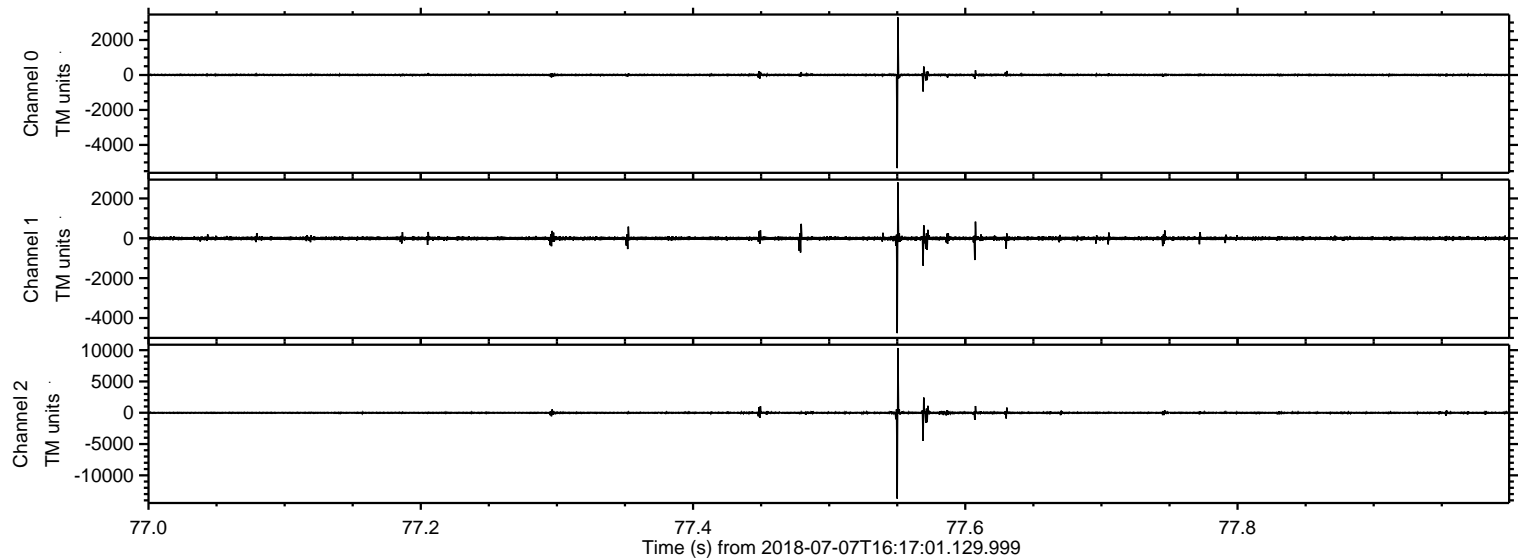


Processed Sat Jul 7 18:24:47 2018 by ELM ver.2012-10-06 from 001\_\_elm20180707\_161700\_\_dat00.bin



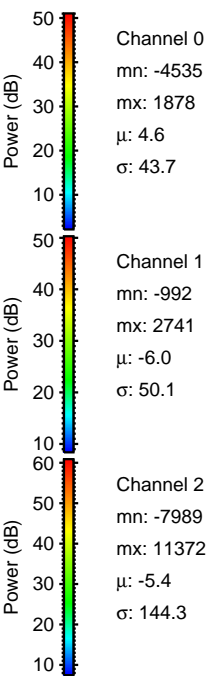
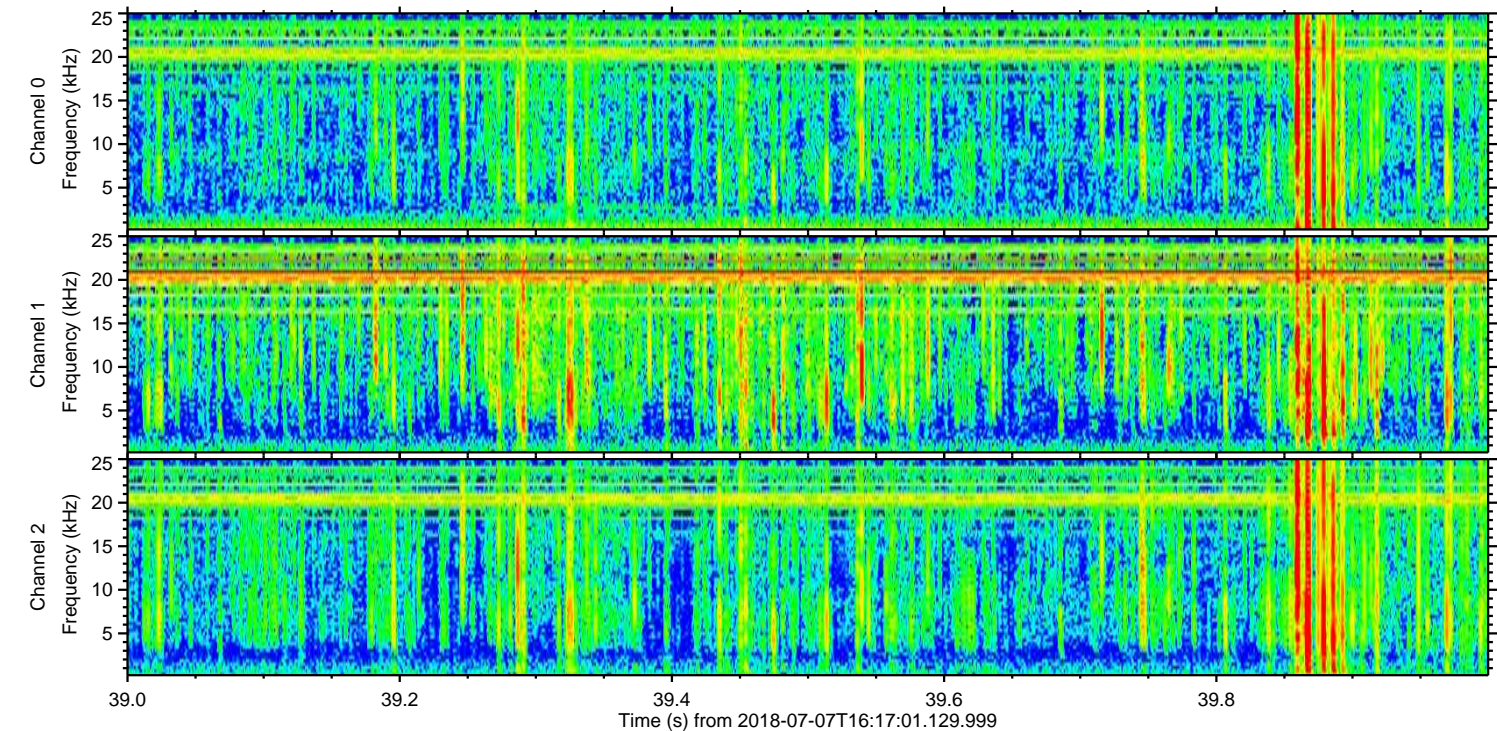
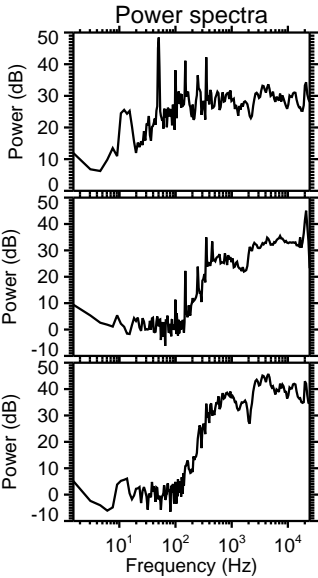
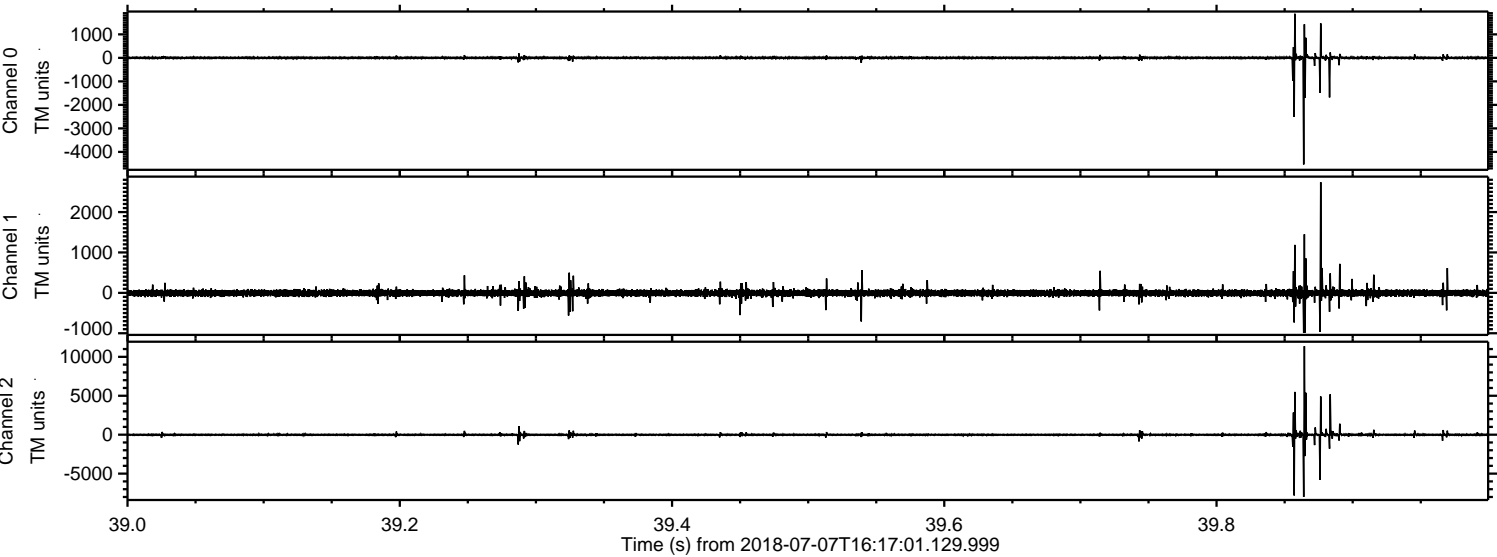


Processed Sat Jul 7 18:24:48 2018 by ELM ver.2012-10-06 from 001\_\_elm20180707\_161700\_\_dat00.bin



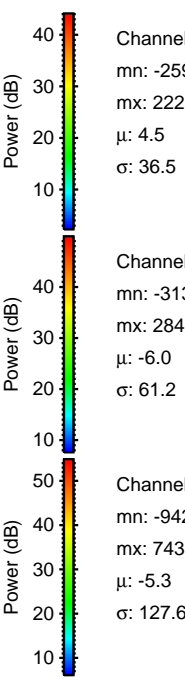
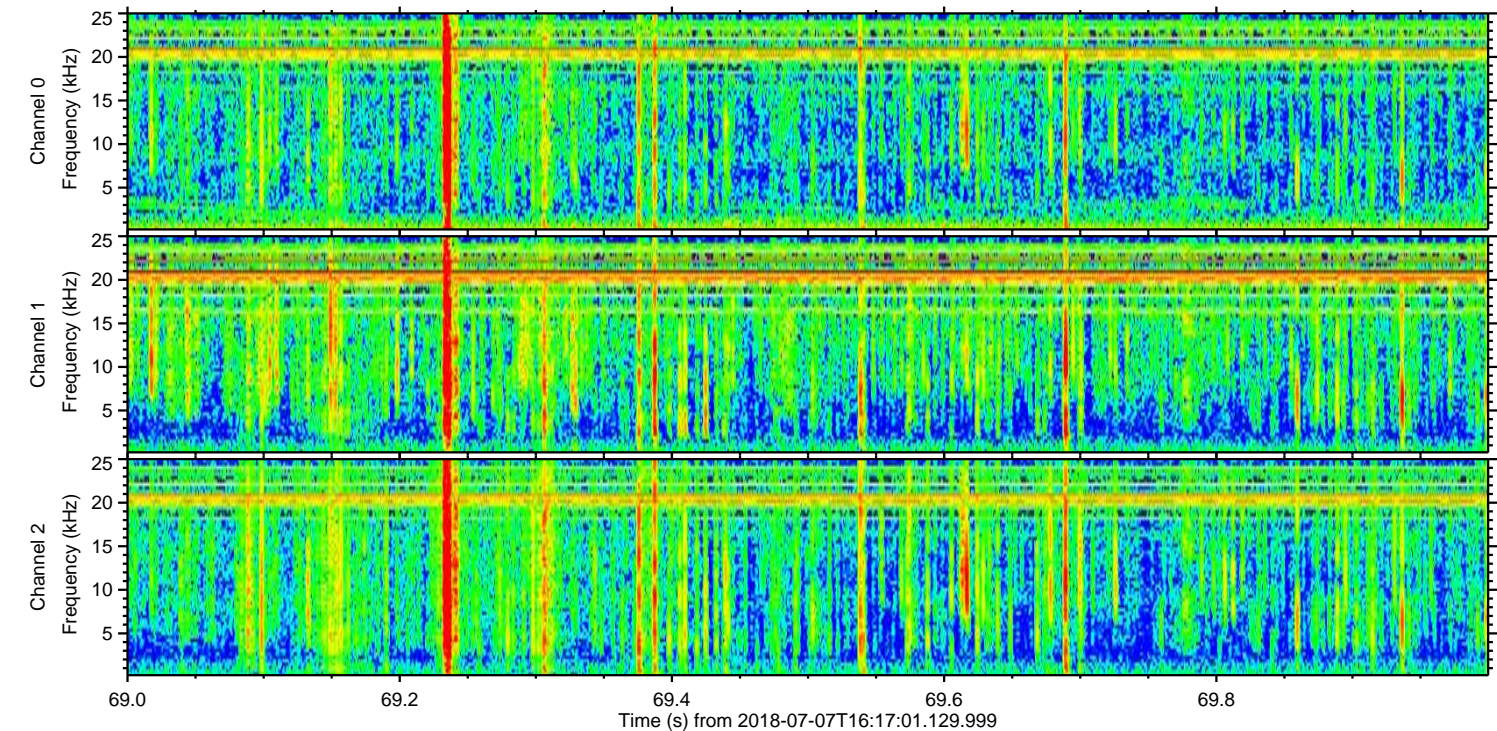
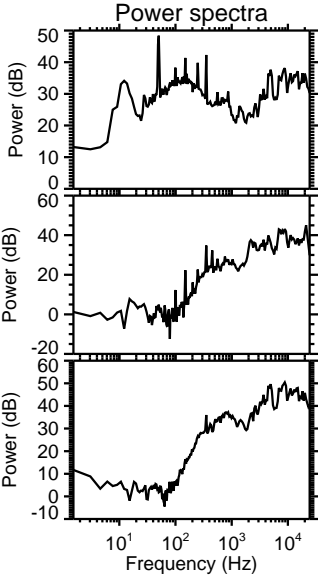
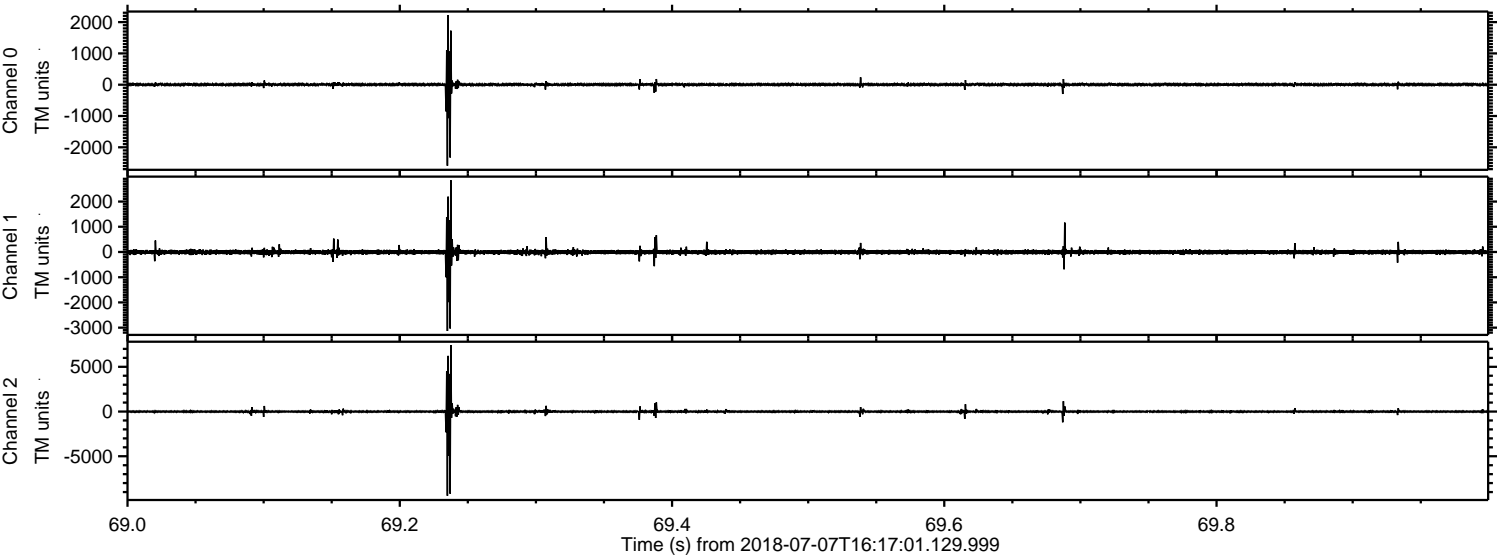


Processed Sat Jul 7 18:24:48 2018 by ELM ver.2012-10-06 from 001\_\_elm20180707\_161700\_\_dat00.bin



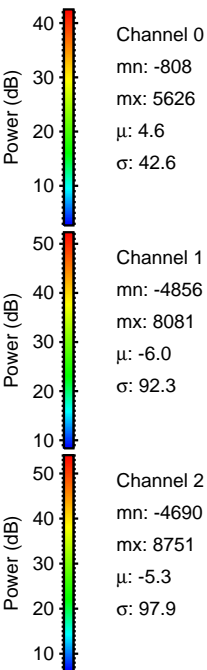
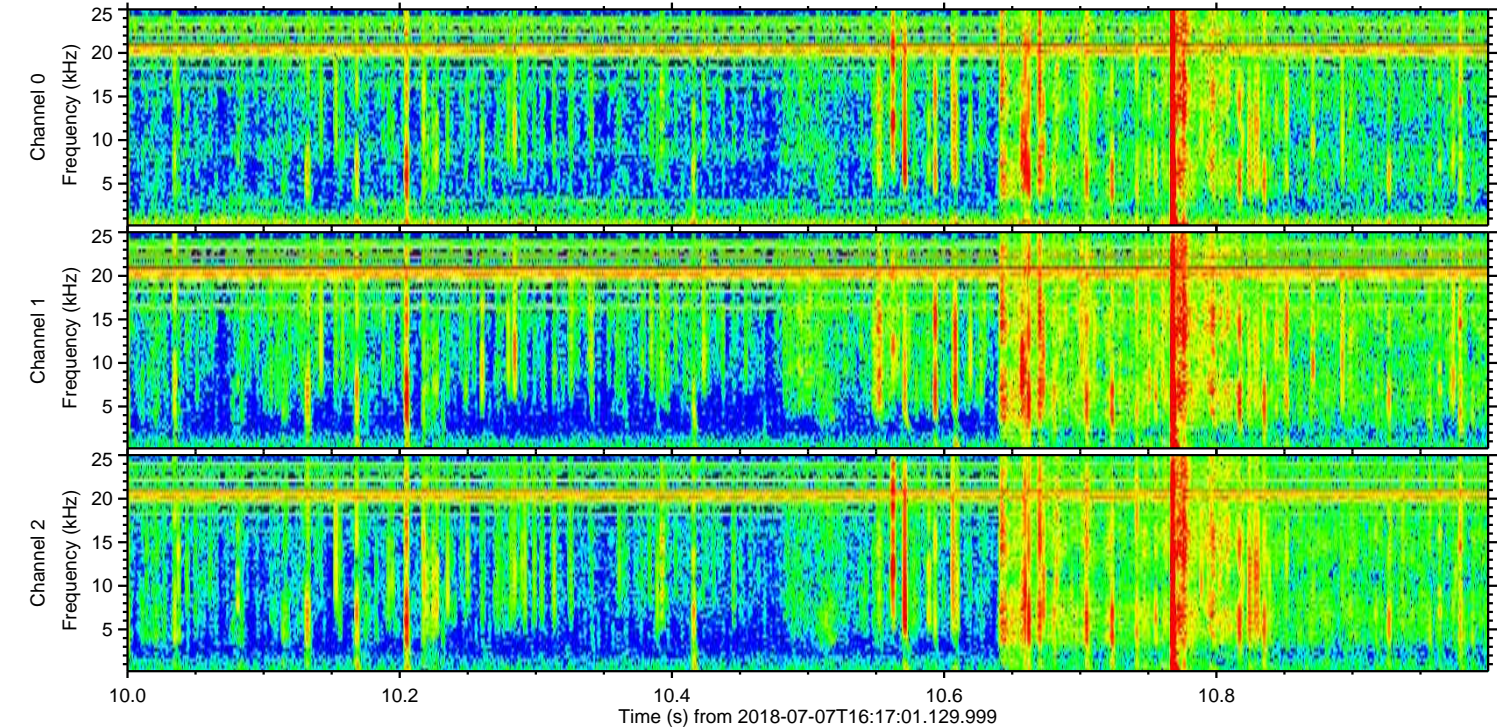
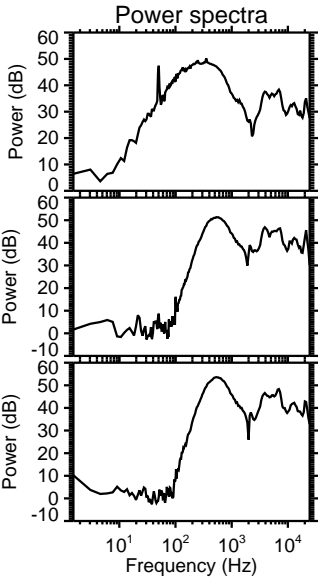
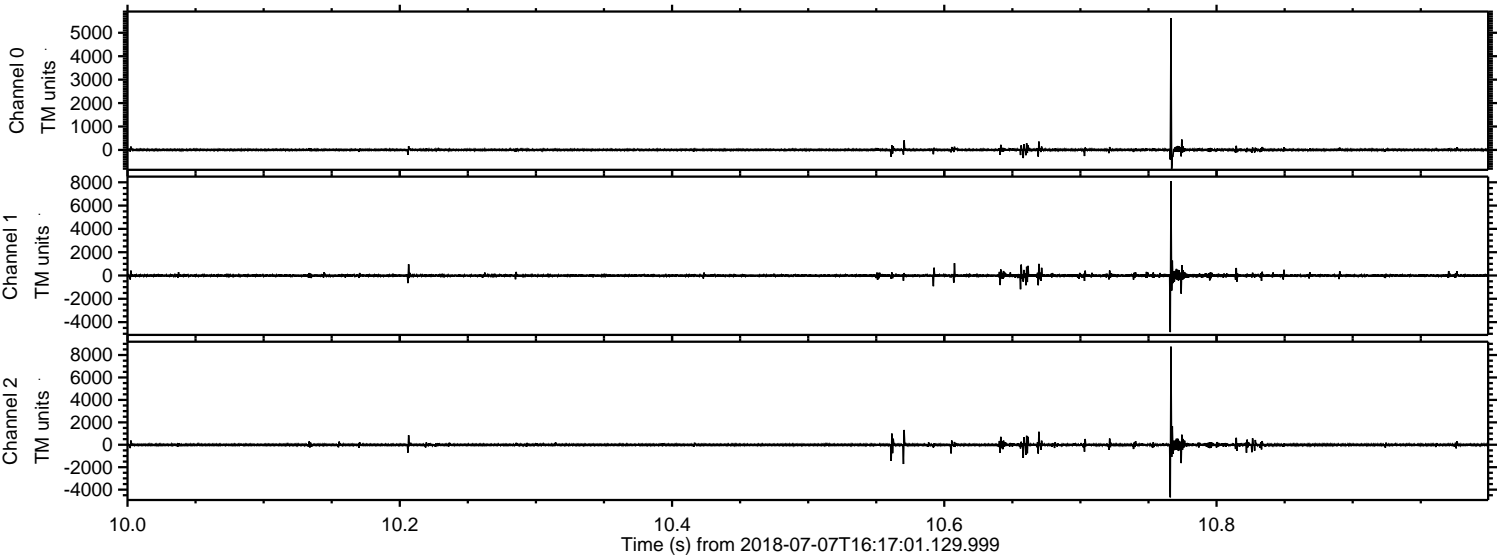


Processed Sat Jul 7 18:24:49 2018 by ELM ver.2012-10-06 from 001\_\_elm20180707\_161700\_\_dat00.bin





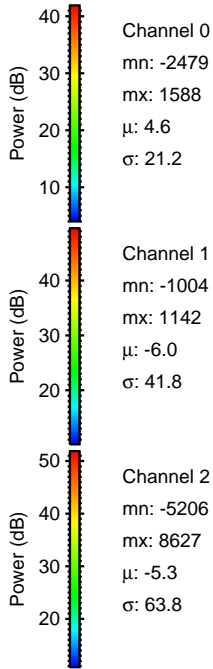
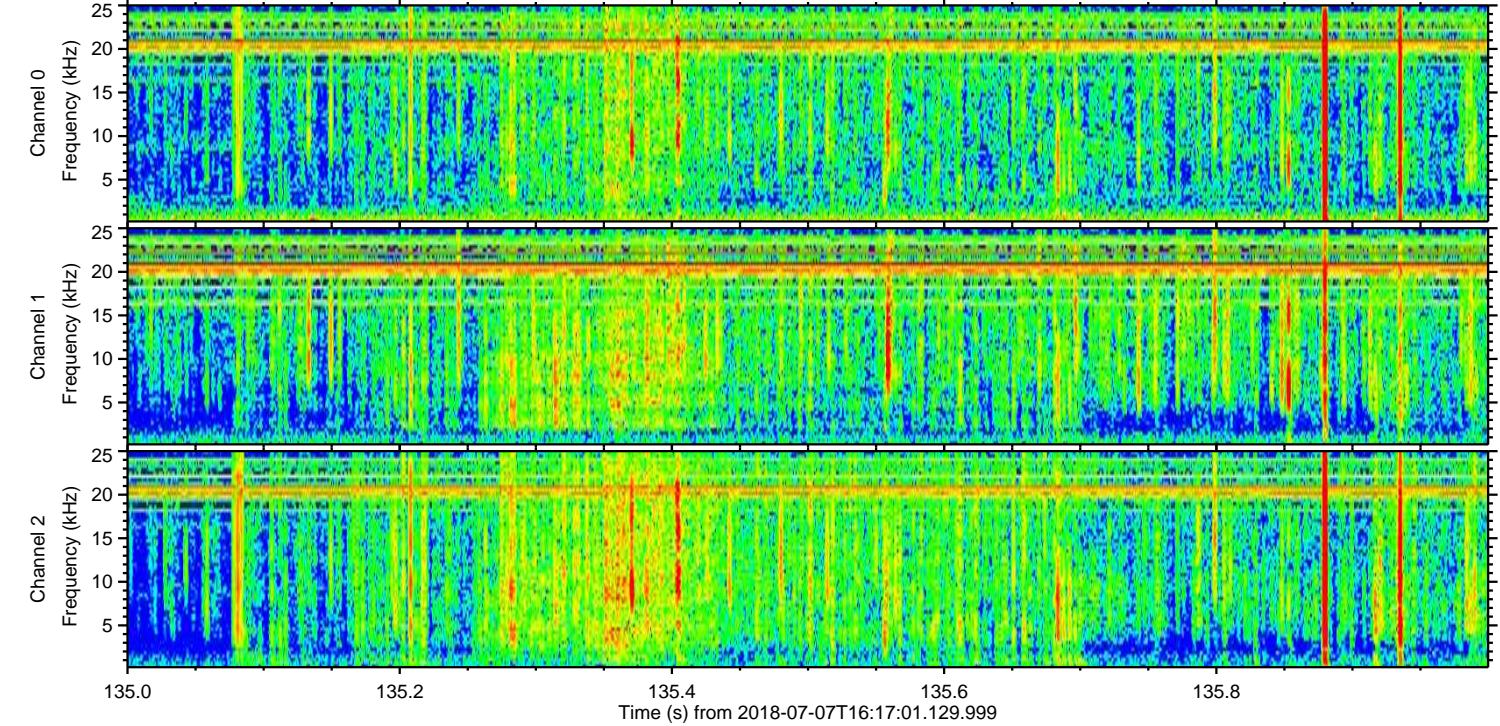
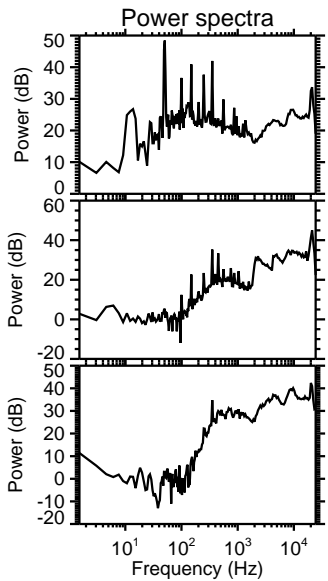
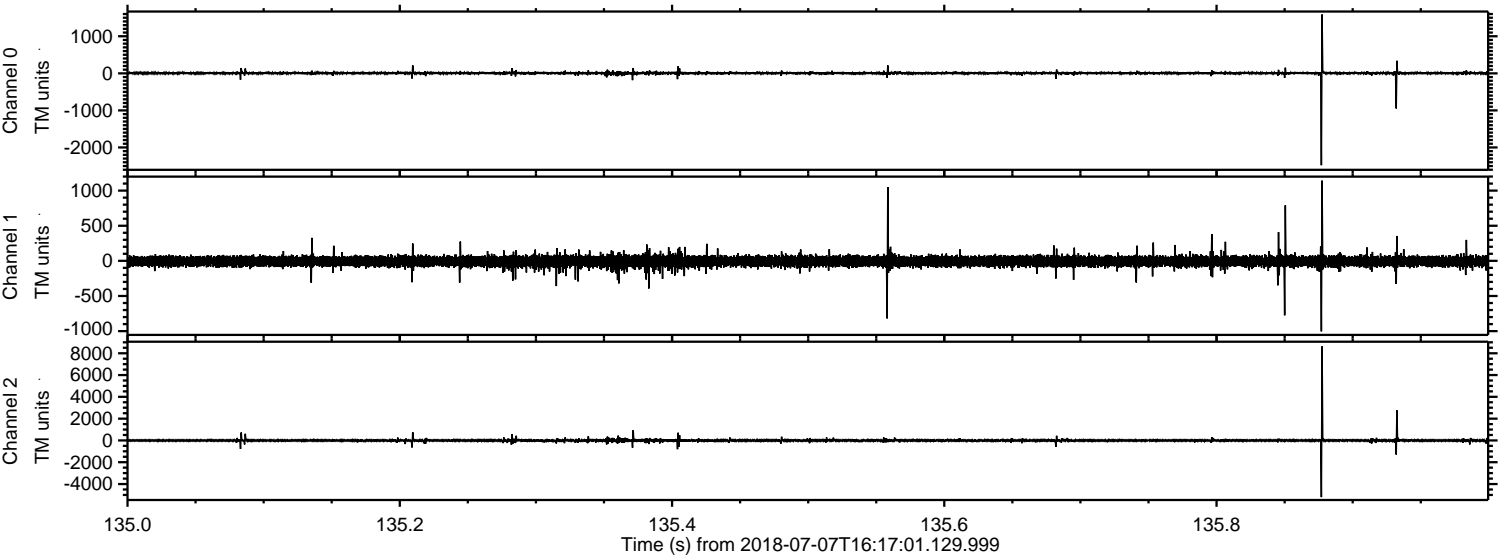
Processed Sat Jul 7 18:24:50 2018 by ELM ver.2012-10-06 from 001\_\_elm20180707\_161700\_\_dat00.bin





ELMAVAN 3D WAVEFORMS (Measured data sampled at 50 kHz) 51000 packets of 144 samples from 2018-07-07T16:17:01.129.999. Part 136/147

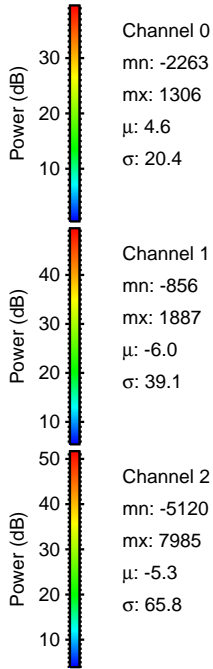
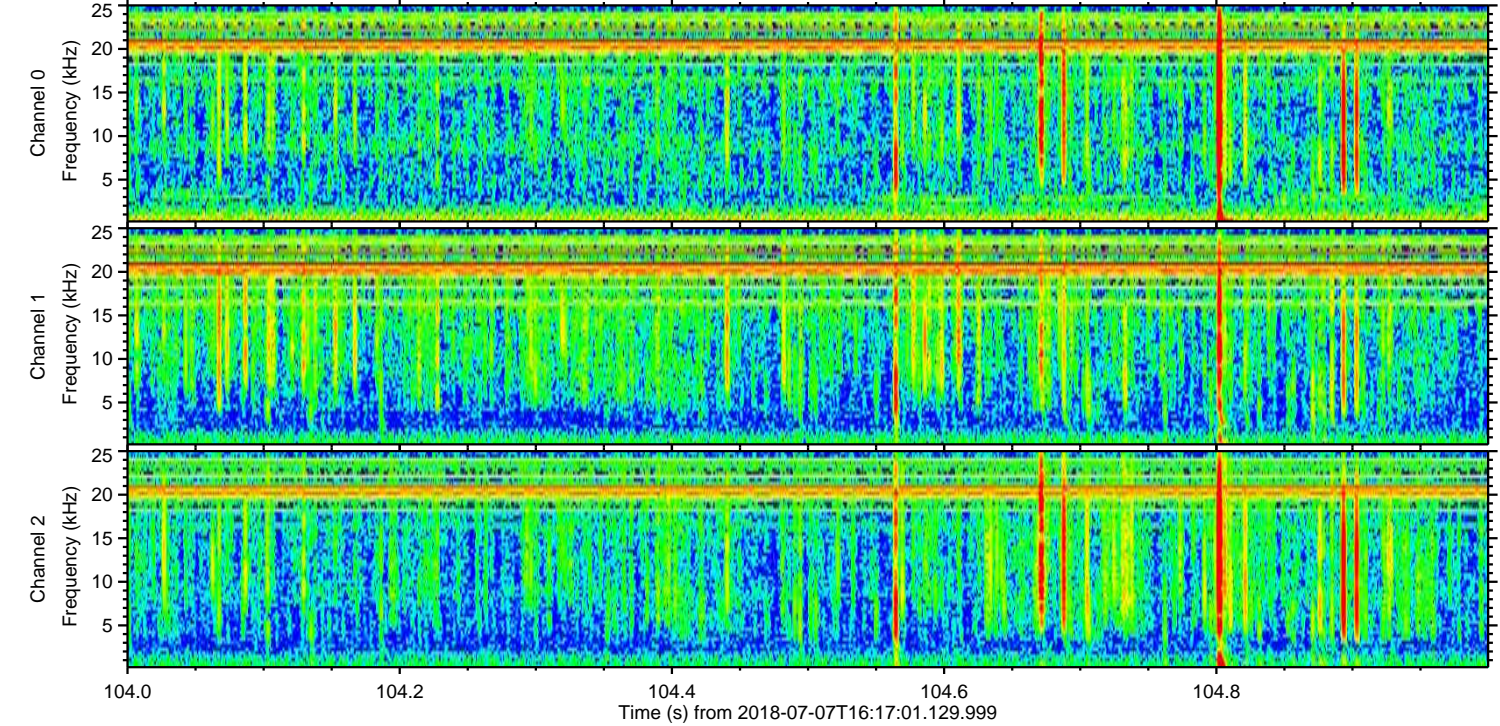
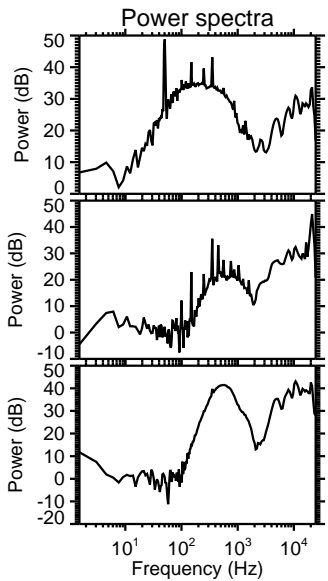
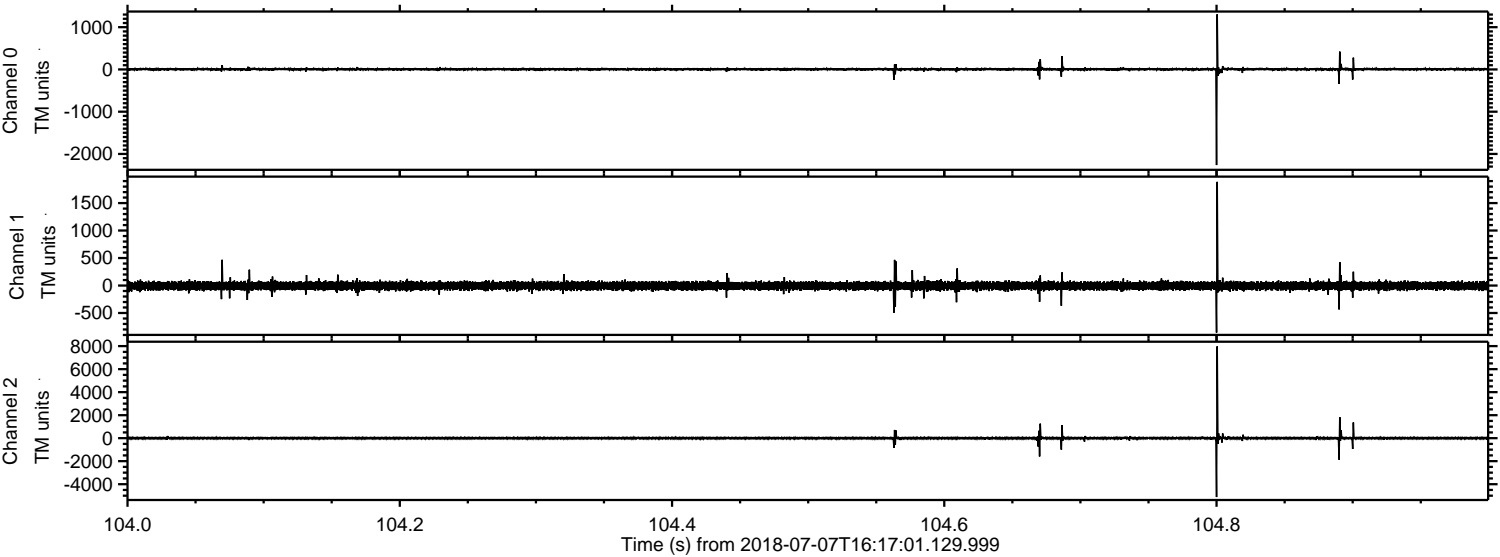
Processed Sat Jul 7 18:24:50 2018 by ELM ver.2012-10-06 from 001\_\_elm20180707\_161700\_\_dat00.bin





ELMAVAN 3D WAVEFORMS (Measured data sampled at 50 kHz) 51000 packets of 144 samples from 2018-07-07T16:17:01.129.999. Part 105/147

Processed Sat Jul 7 18:24:51 2018 by ELM ver.2012-10-06 from 001\_\_elm20180707\_161700\_\_dat00.bin





Processed Sat Jul 7 18:24:52 2018 by ELM ver.2012-10-06 from 001\_\_elm20180707\_161700\_\_dat00.bin

