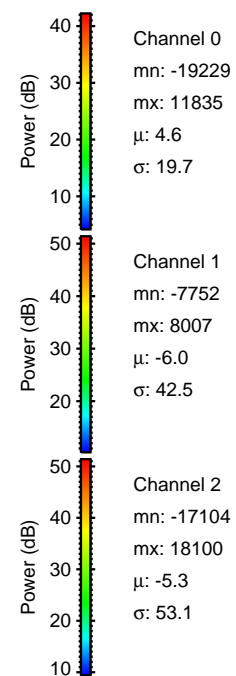
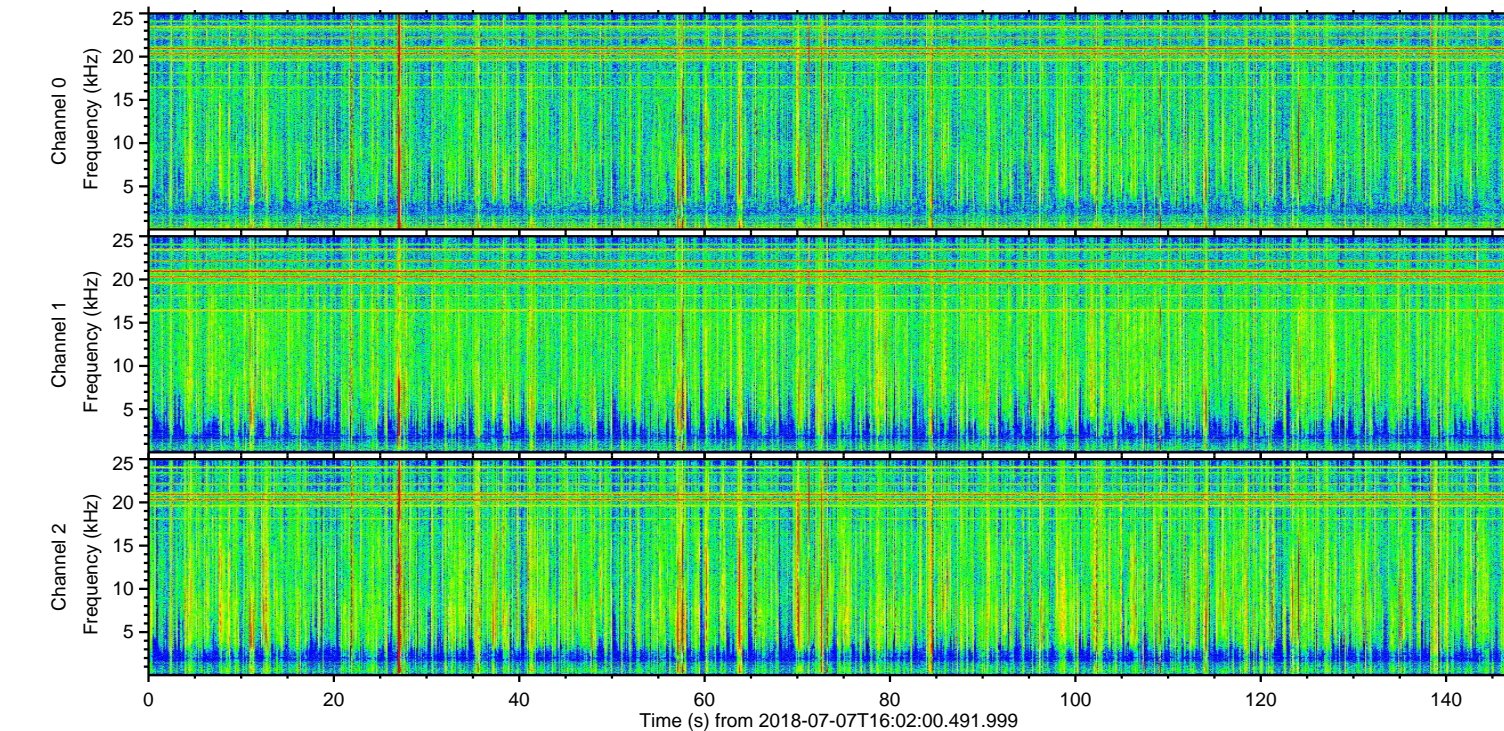
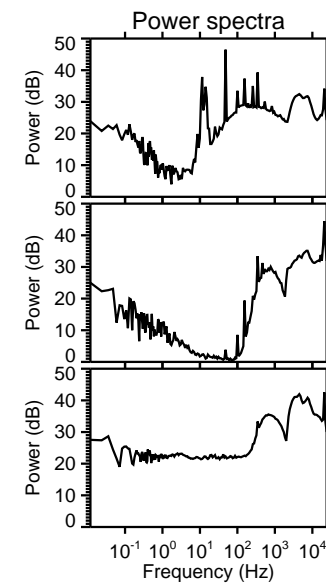
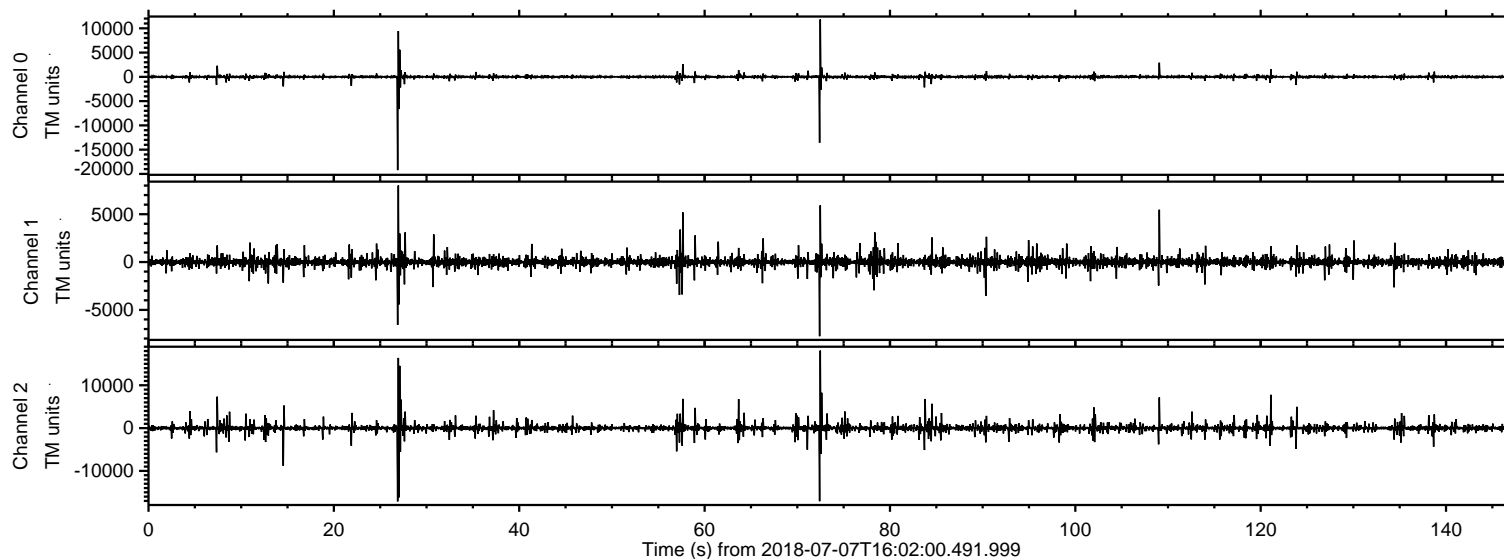
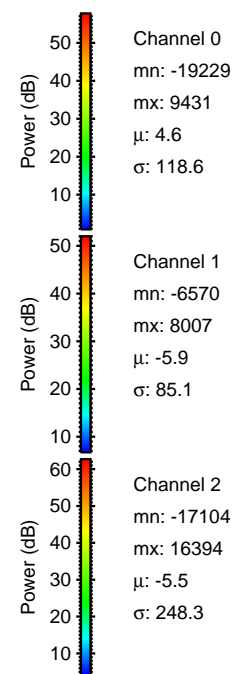
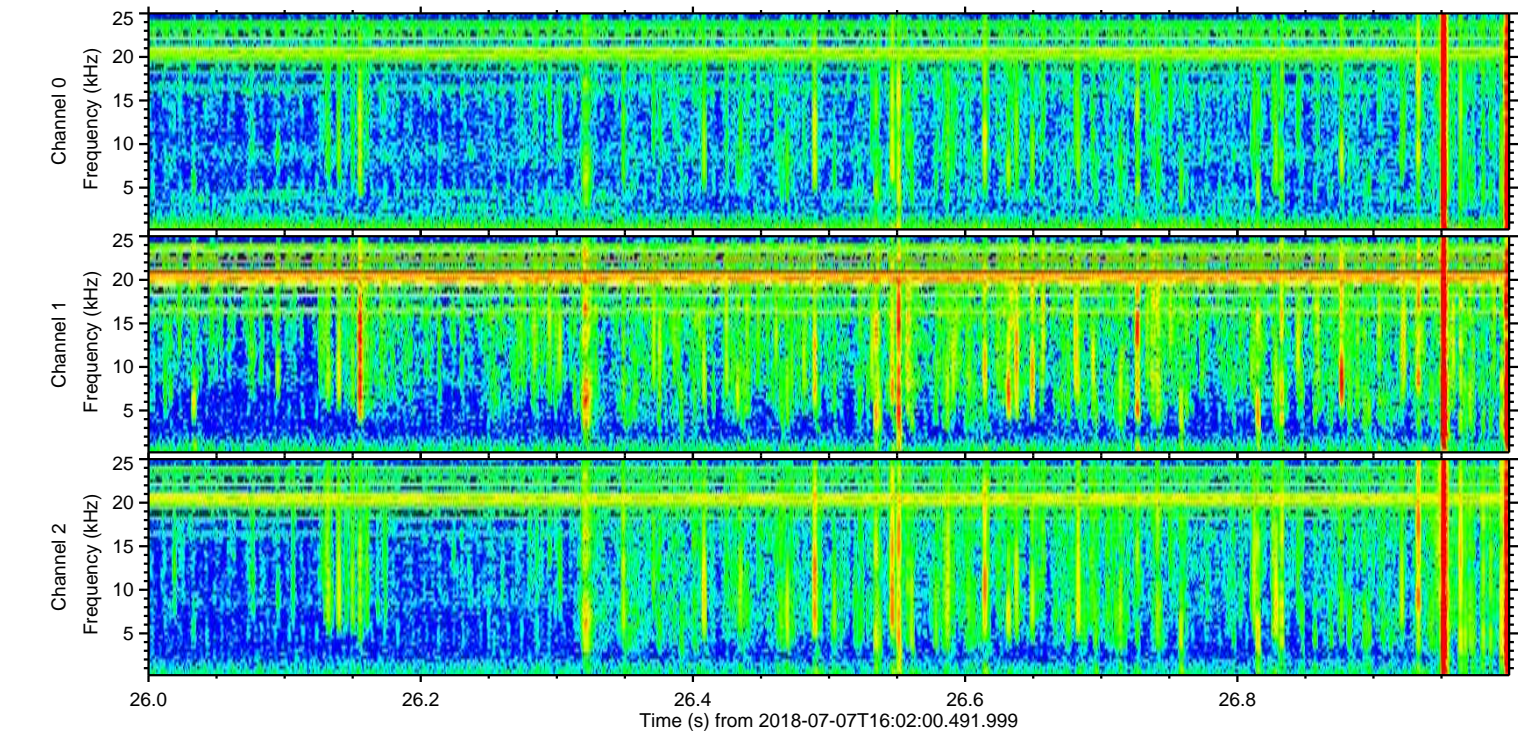
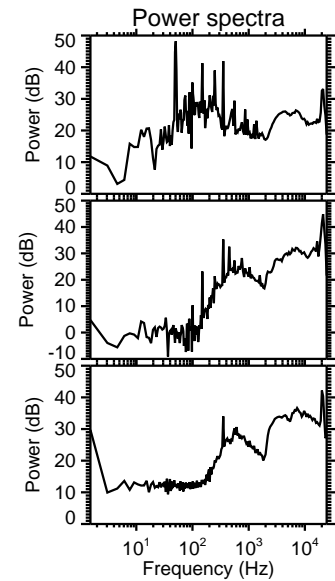
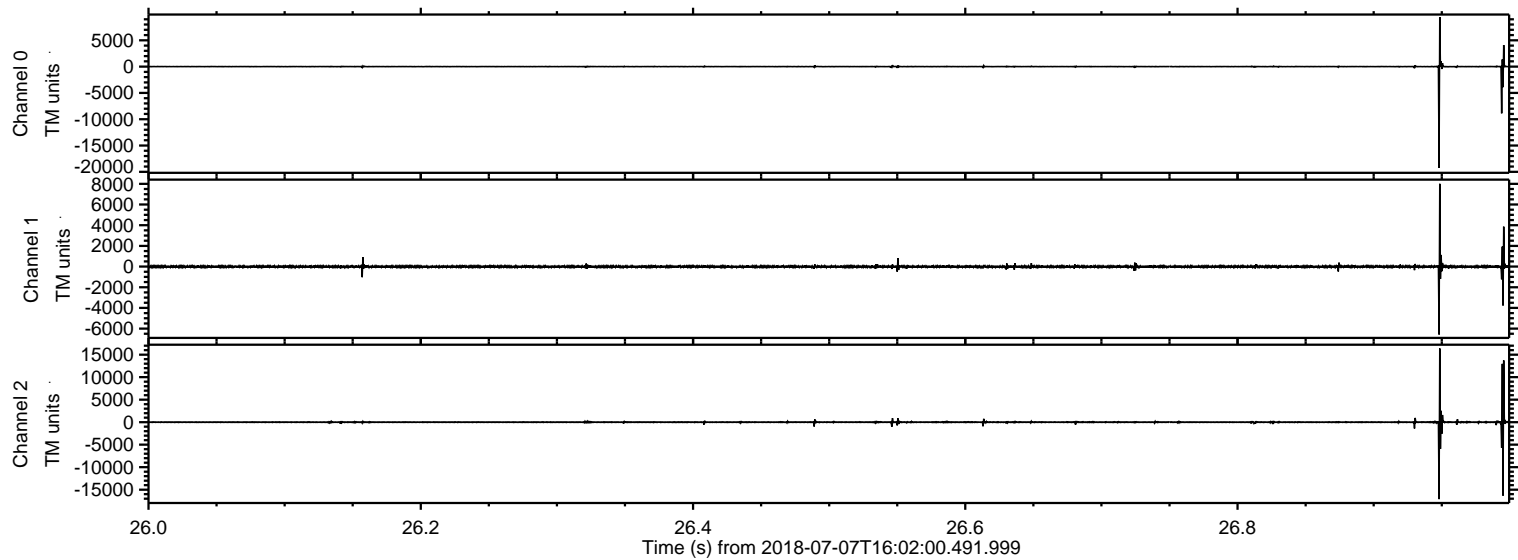


ELMAVAN 3D WAVEFORMS (Measured data sampled at 50 kHz) 51000 packets of 144 samples from 2018-07-07T16:02:00.491.999.

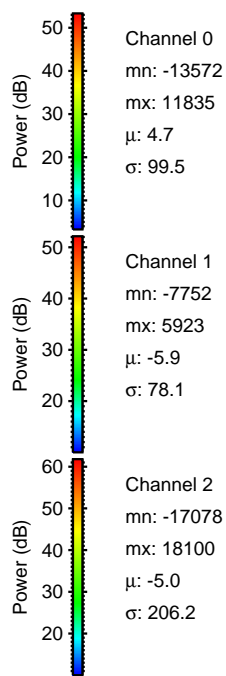
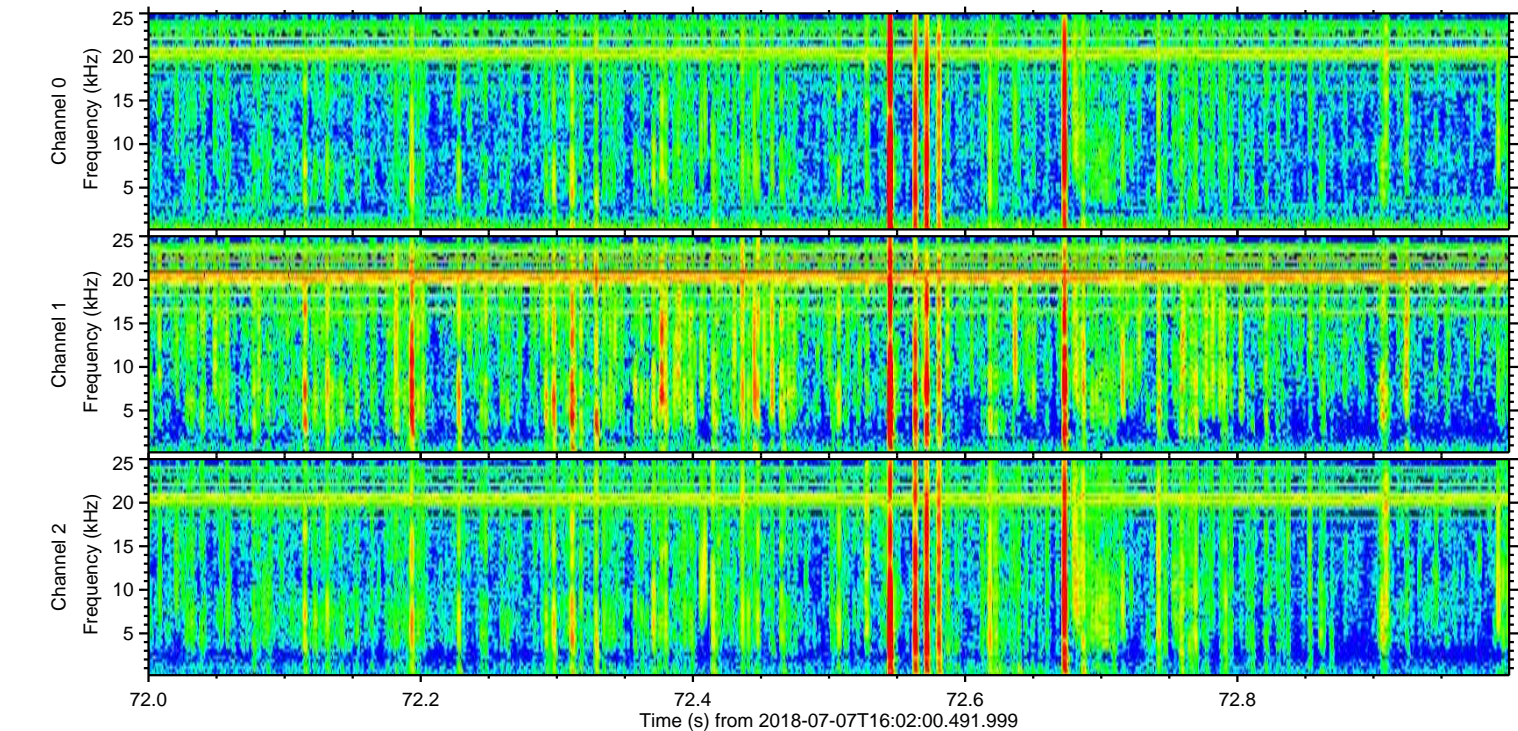
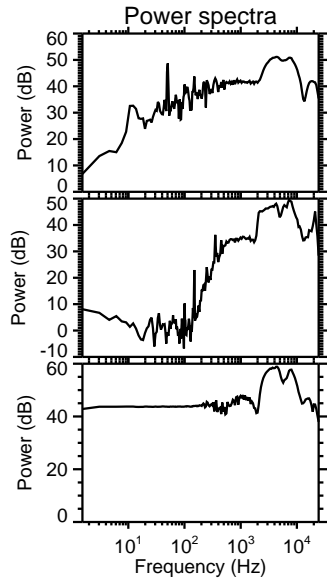
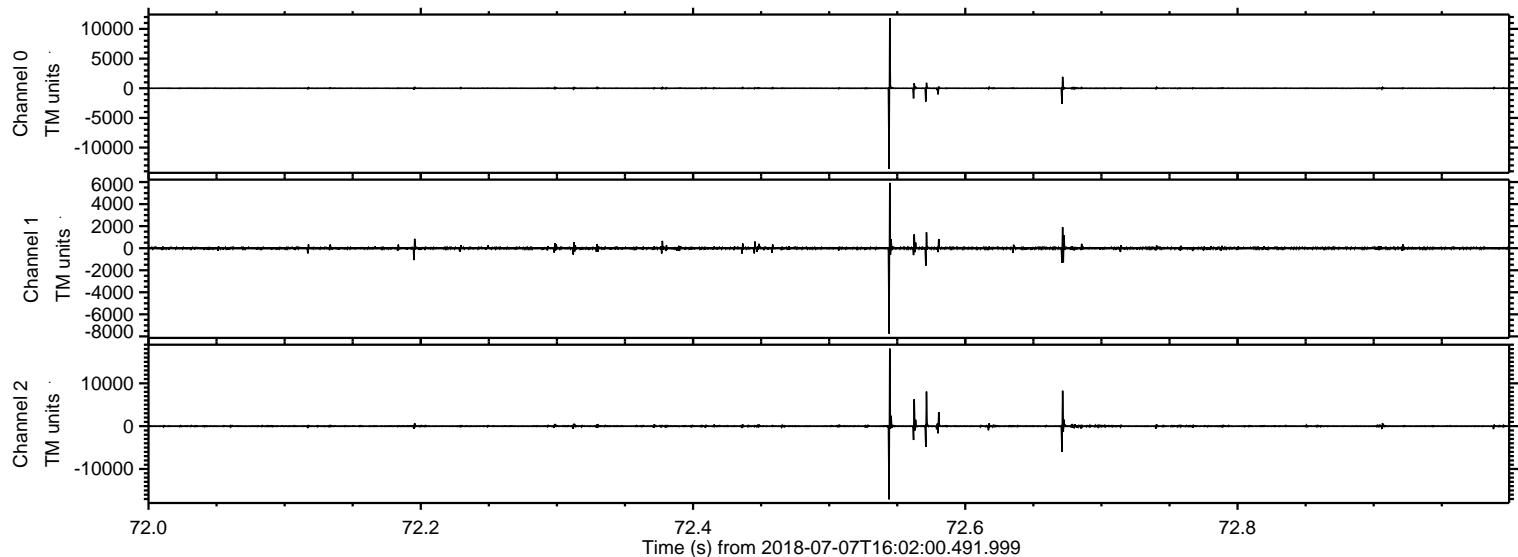
Processed Sat Jul 7 18:10:02 2018 by ELM ver.2012-10-06 from 001__elm20180707_160159__dat00.bin



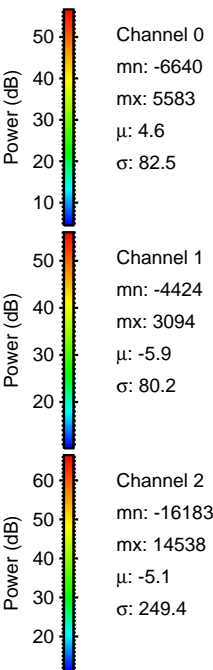
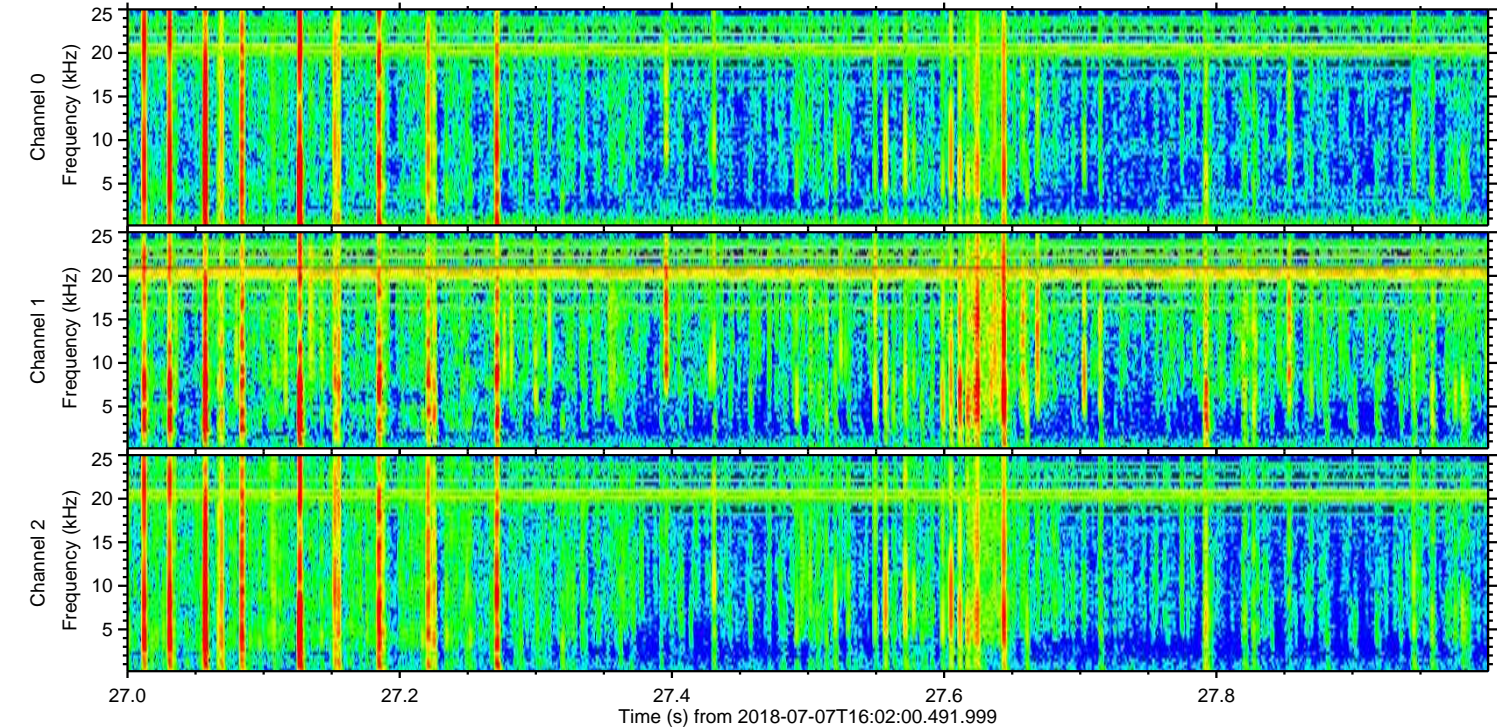
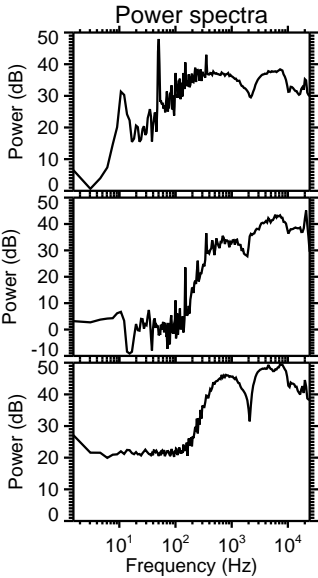
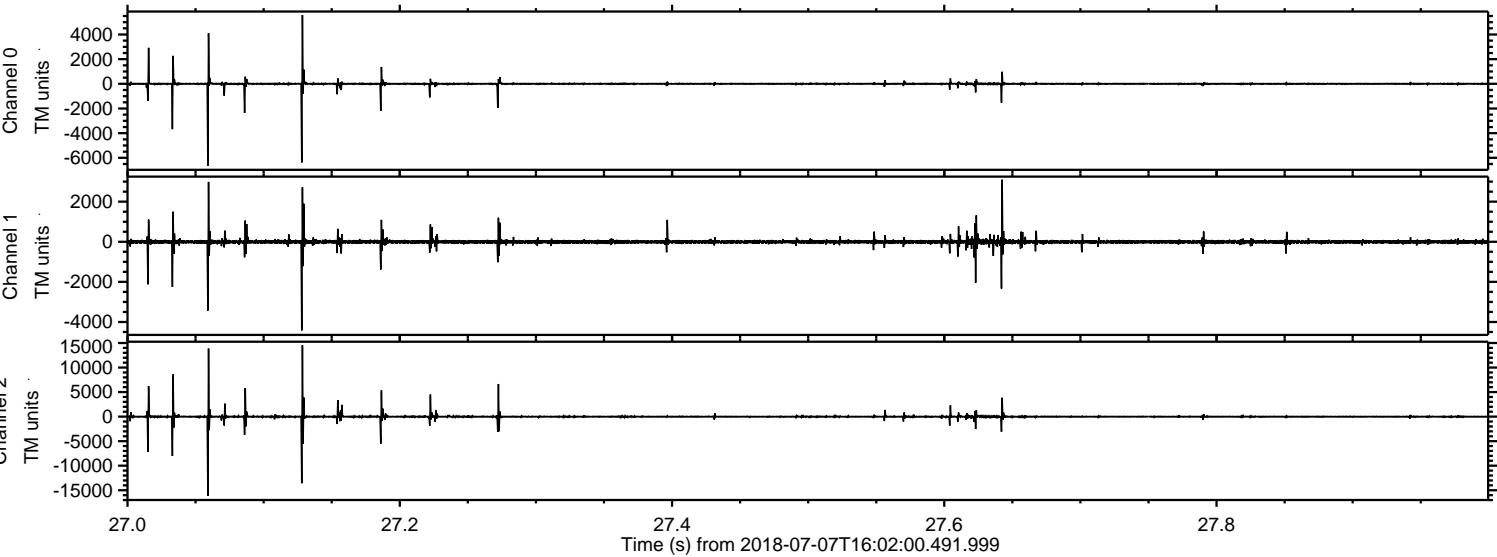
Processed Sat Jul 7 18:10:08 2018 by ELM ver.2012-10-06 from 001__elm20180707_160159__dat00.bin



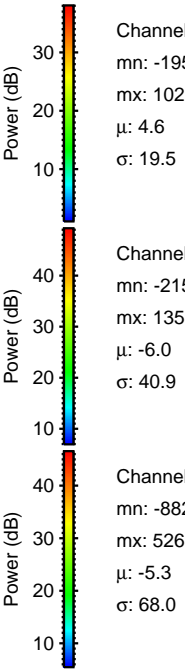
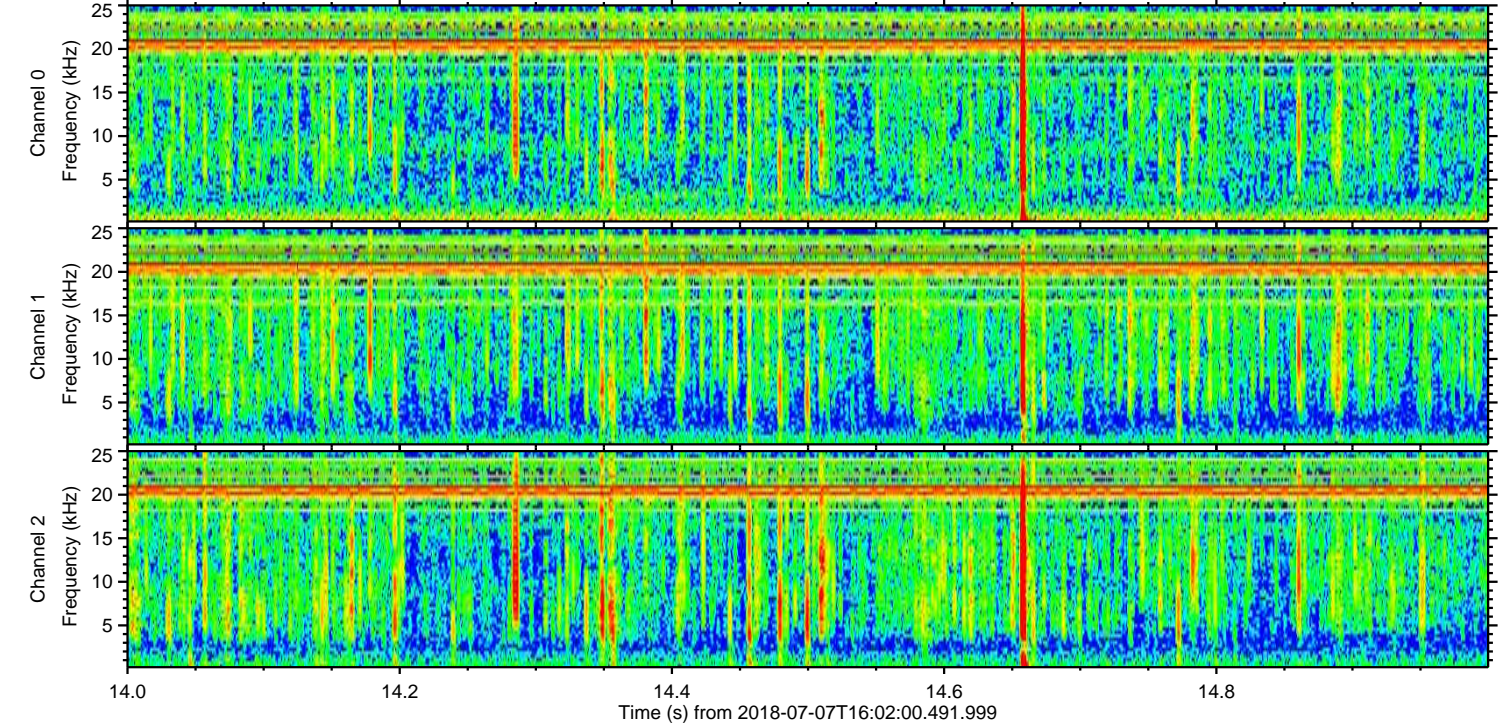
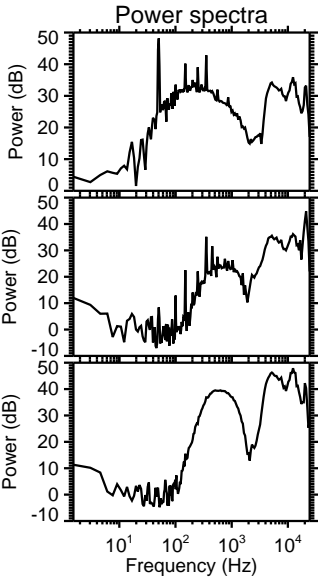
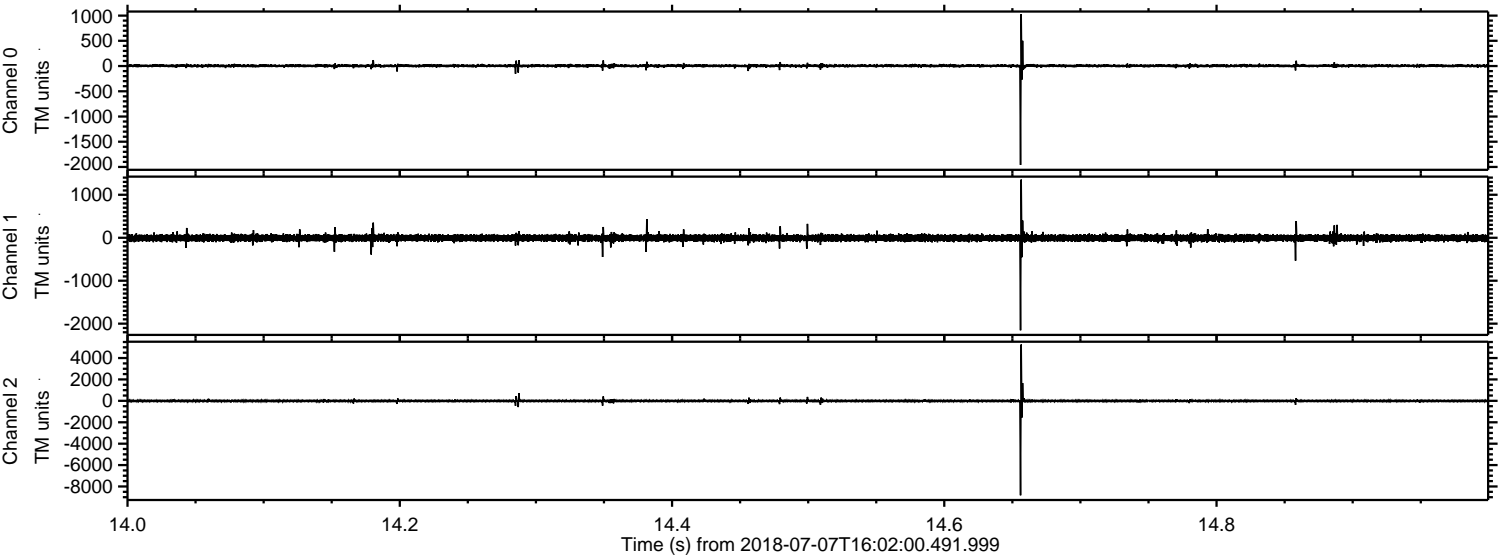
Processed Sat Jul 7 18:10:09 2018 by ELM ver.2012-10-06 from 001__elm20180707_160159__dat00.bin



Processed Sat Jul 7 18:10:10 2018 by ELM ver.2012-10-06 from 001__elm20180707_160159__dat00.bin

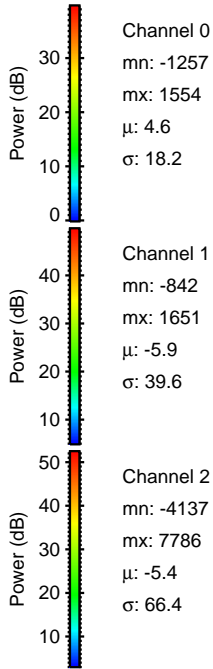
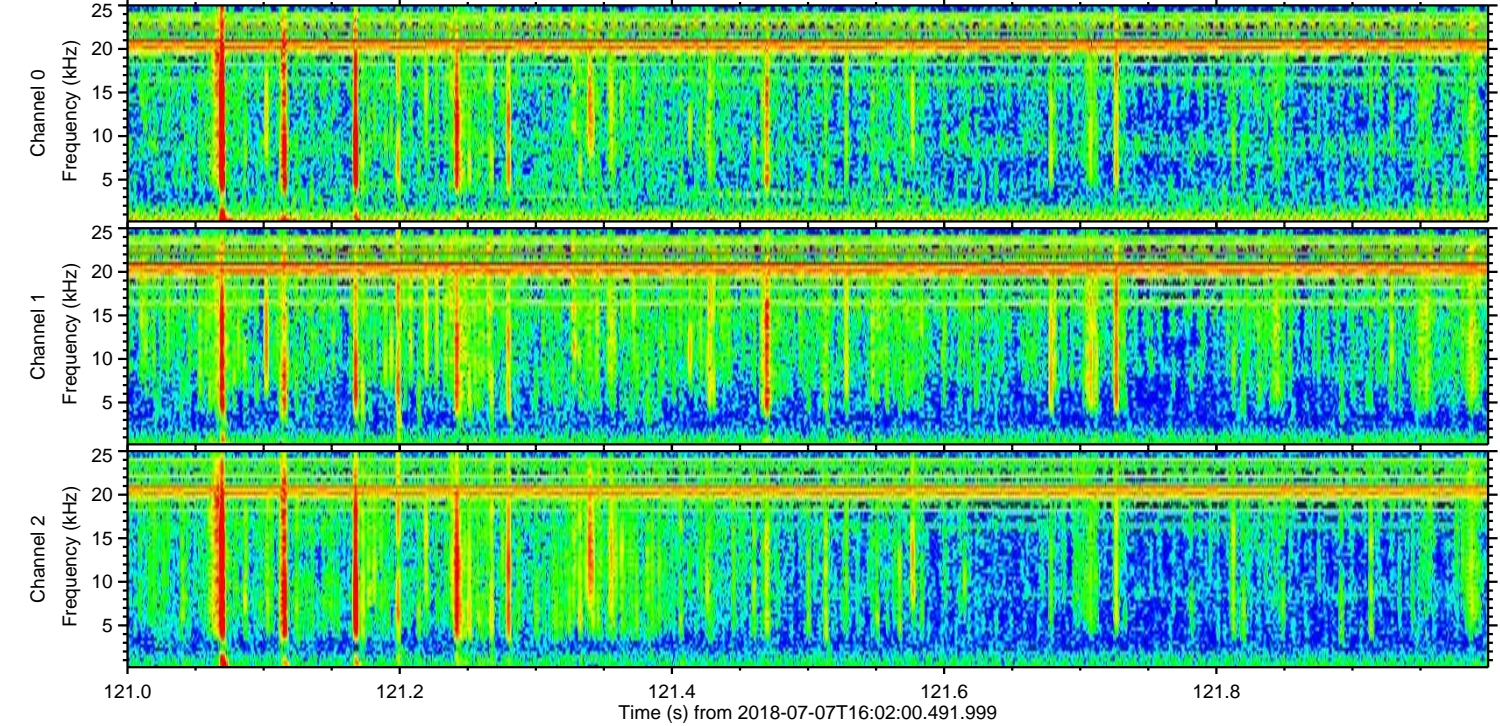
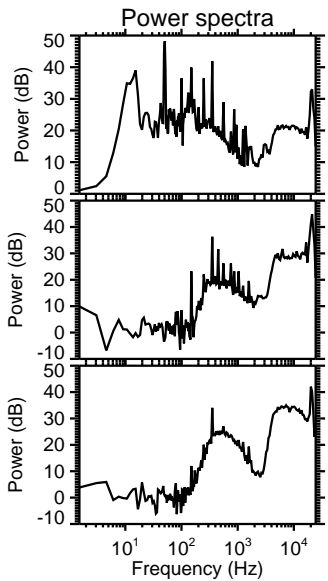
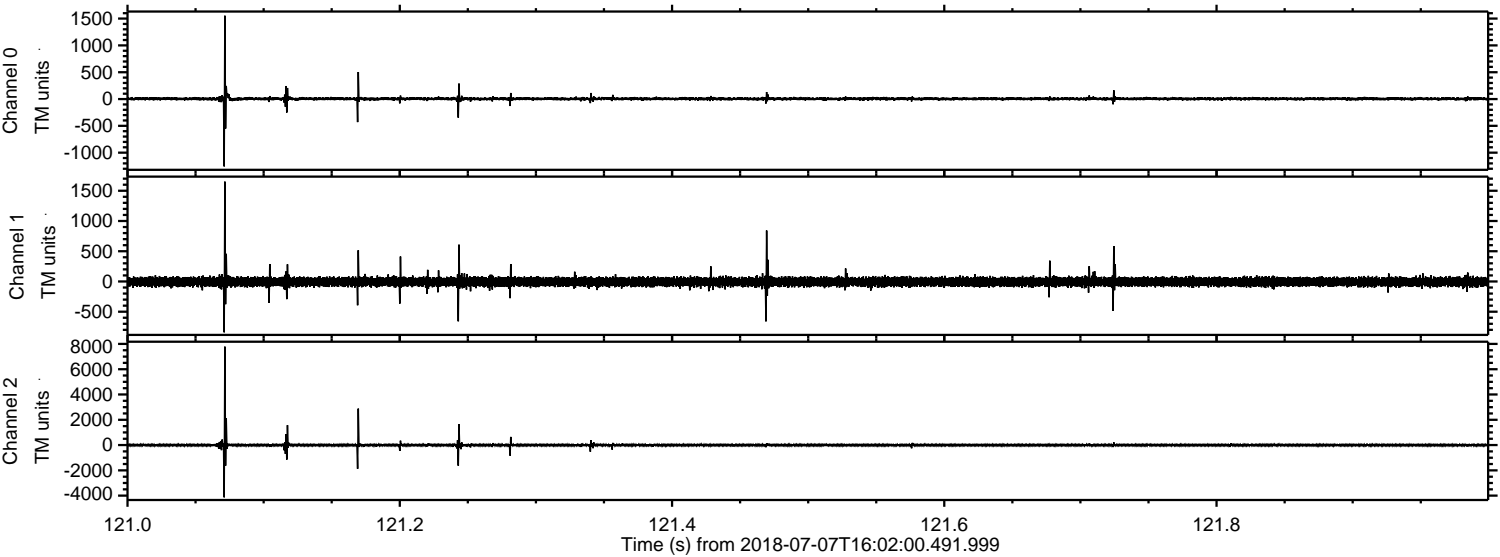


Processed Sat Jul 7 18:10:11 2018 by ELM ver.2012-10-06 from 001__elm20180707_160159__dat00.bin

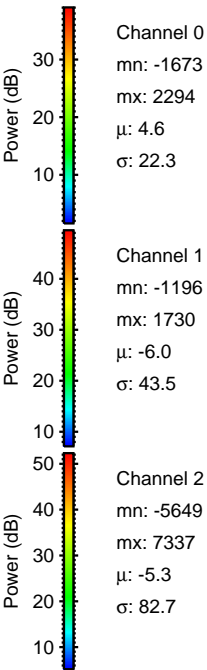
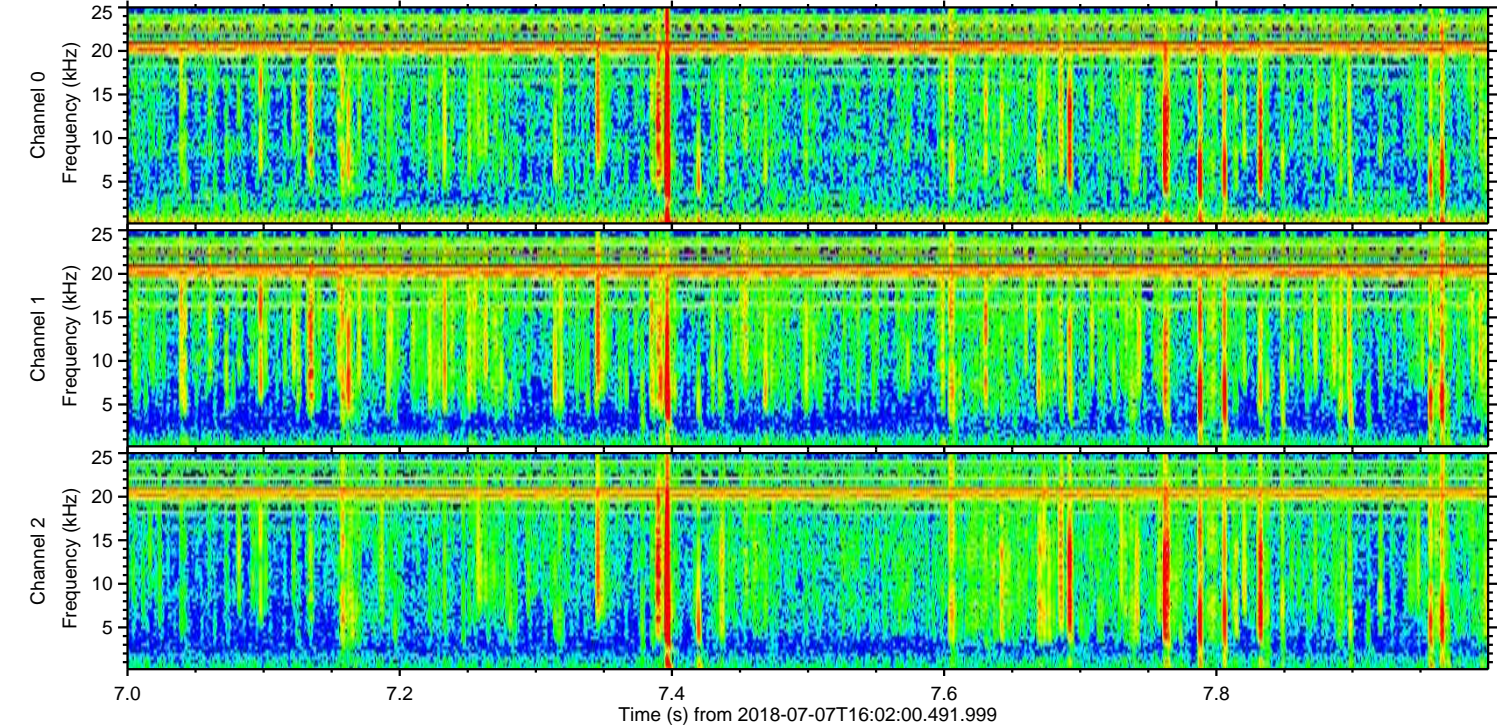
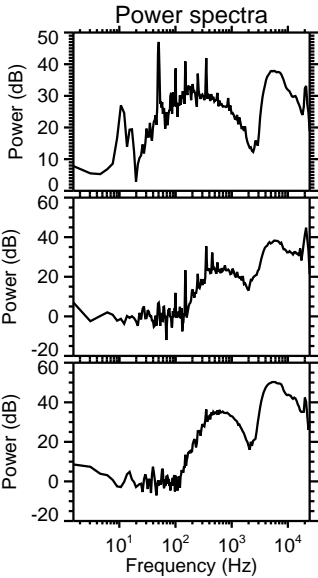
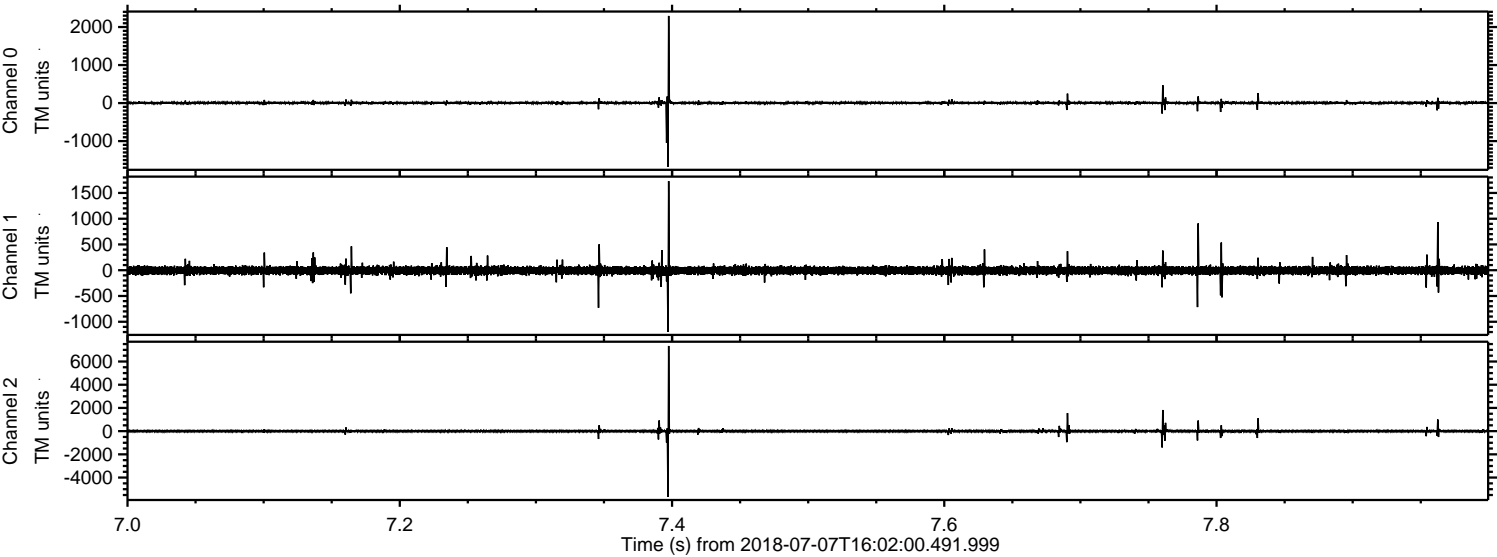


ELMAVAN 3D WAVEFORMS (Measured data sampled at 50 kHz) 51000 packets of 144 samples from 2018-07-07T16:02:00.491.999. Part 122/147

Processed Sat Jul 7 18:10:11 2018 by ELM ver.2012-10-06 from 001__elm20180707_160159__dat00.bin

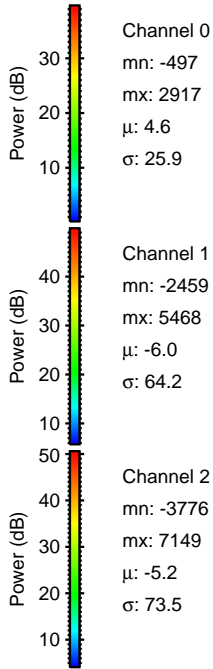
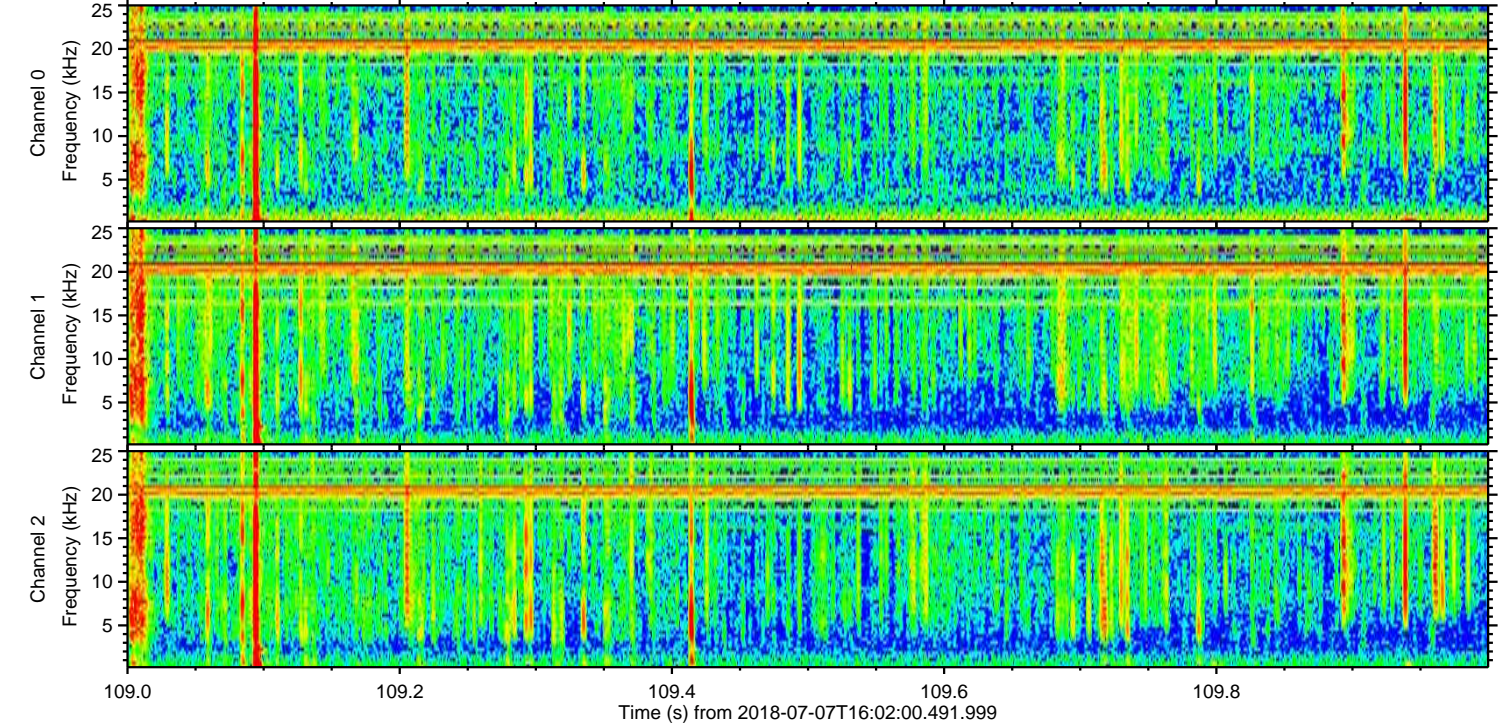
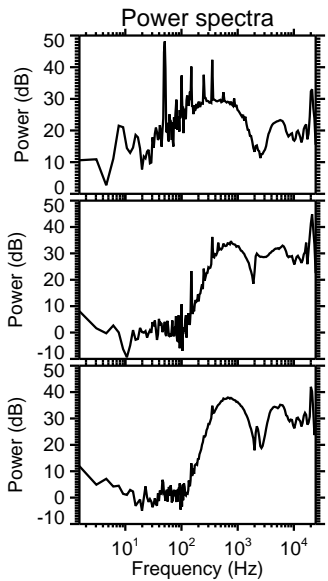
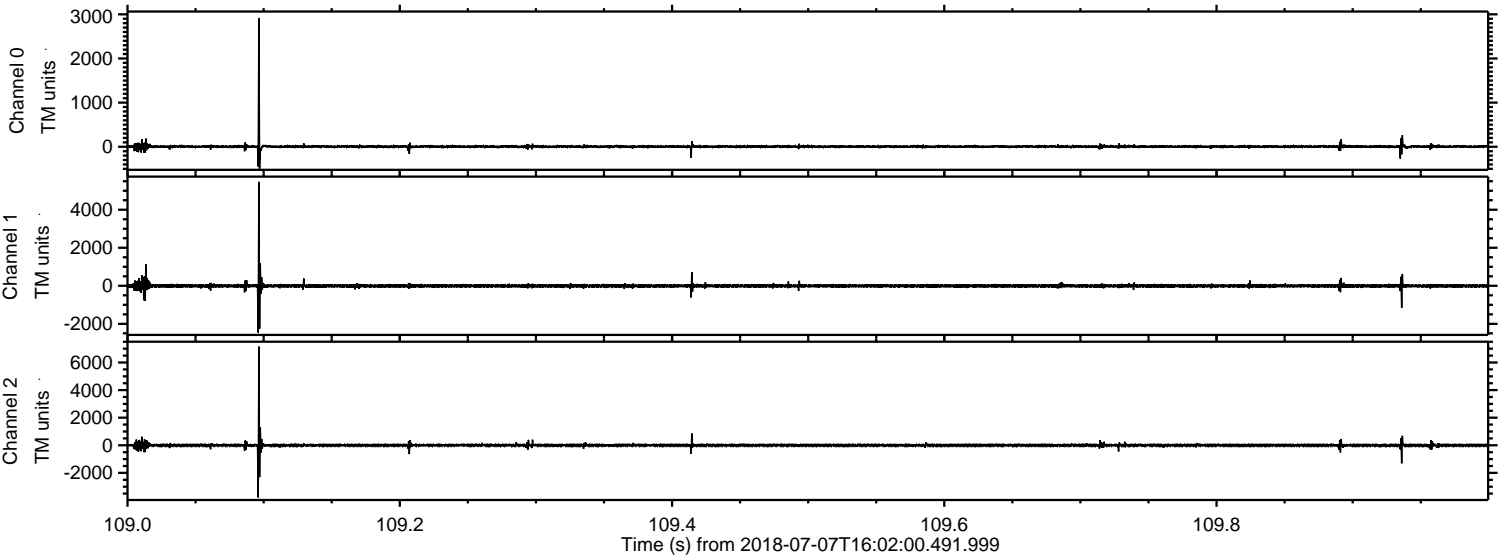


Processed Sat Jul 7 18:10:12 2018 by ELM ver.2012-10-06 from 001__elm20180707_160159__dat00.bin

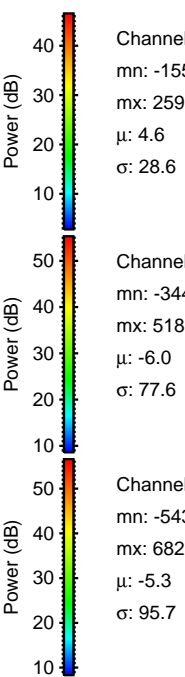
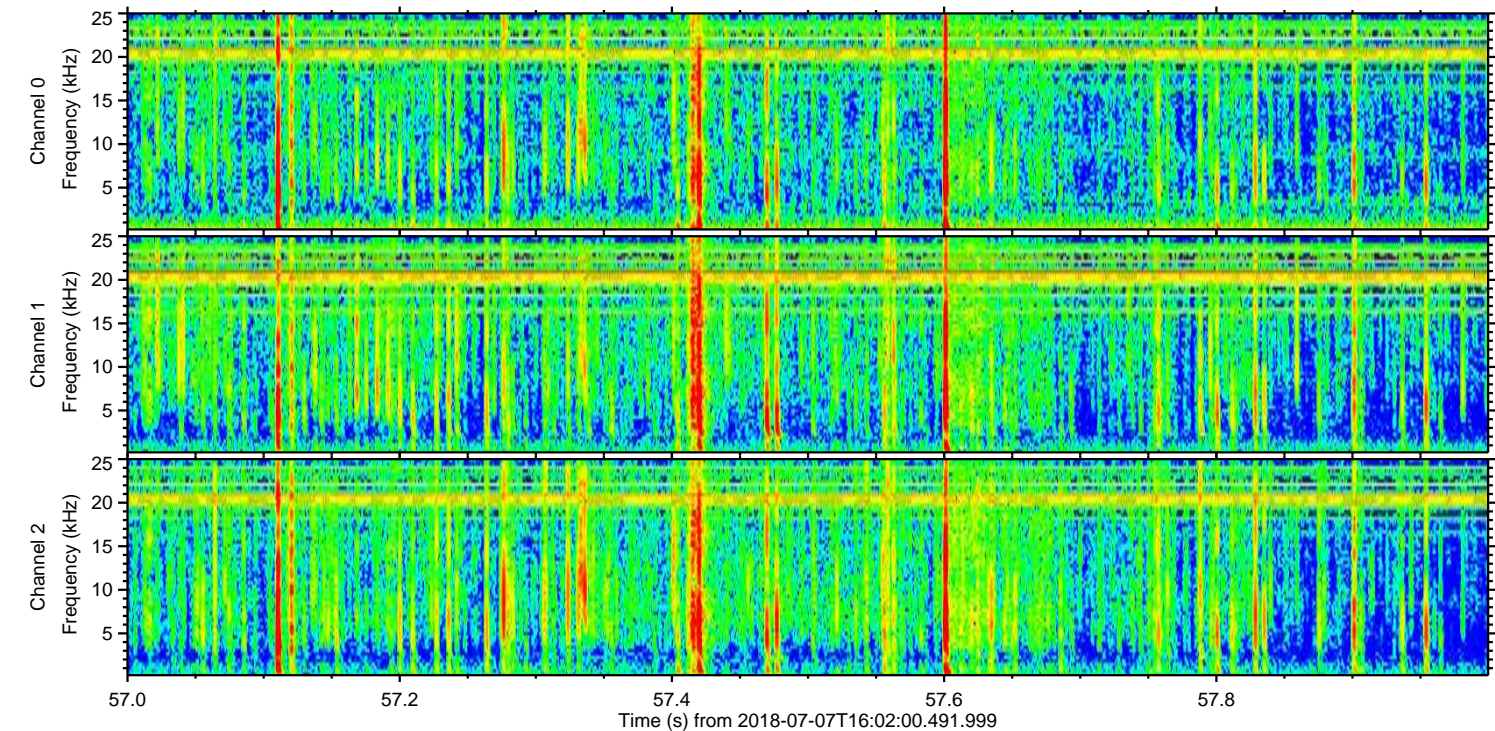
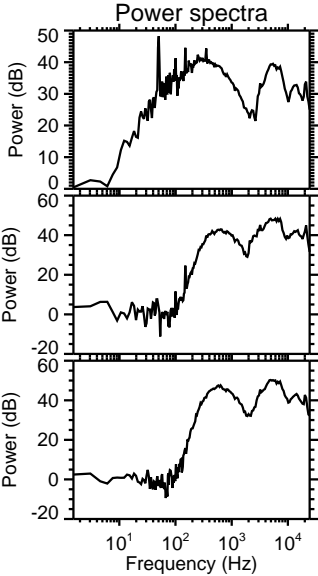
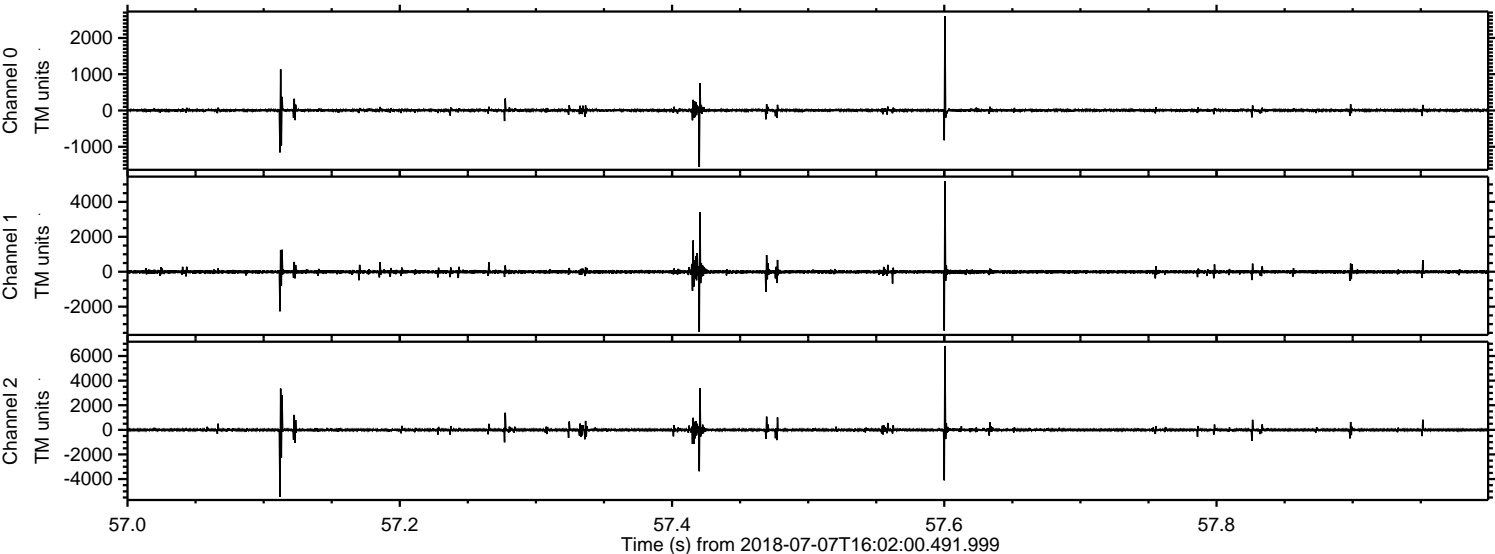


ELMAVAN 3D WAVEFORMS (Measured data sampled at 50 kHz) 51000 packets of 144 samples from 2018-07-07T16:02:00.491.999. Part 110/147

Processed Sat Jul 7 18:10:13 2018 by ELM ver.2012-10-06 from 001__elm20180707_160159__dat00.bin

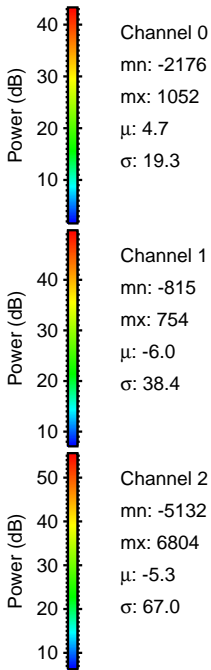
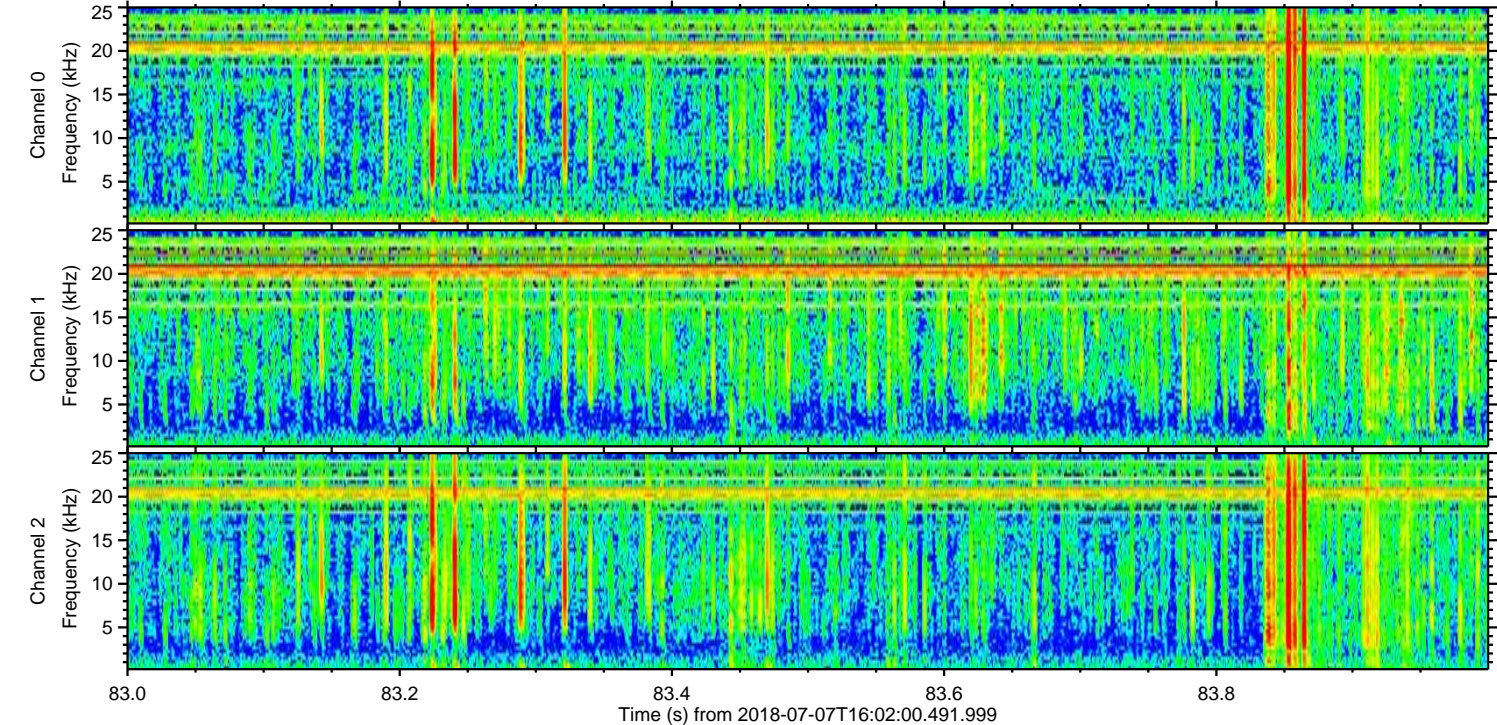
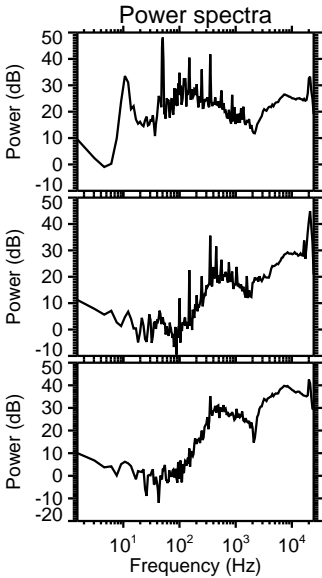
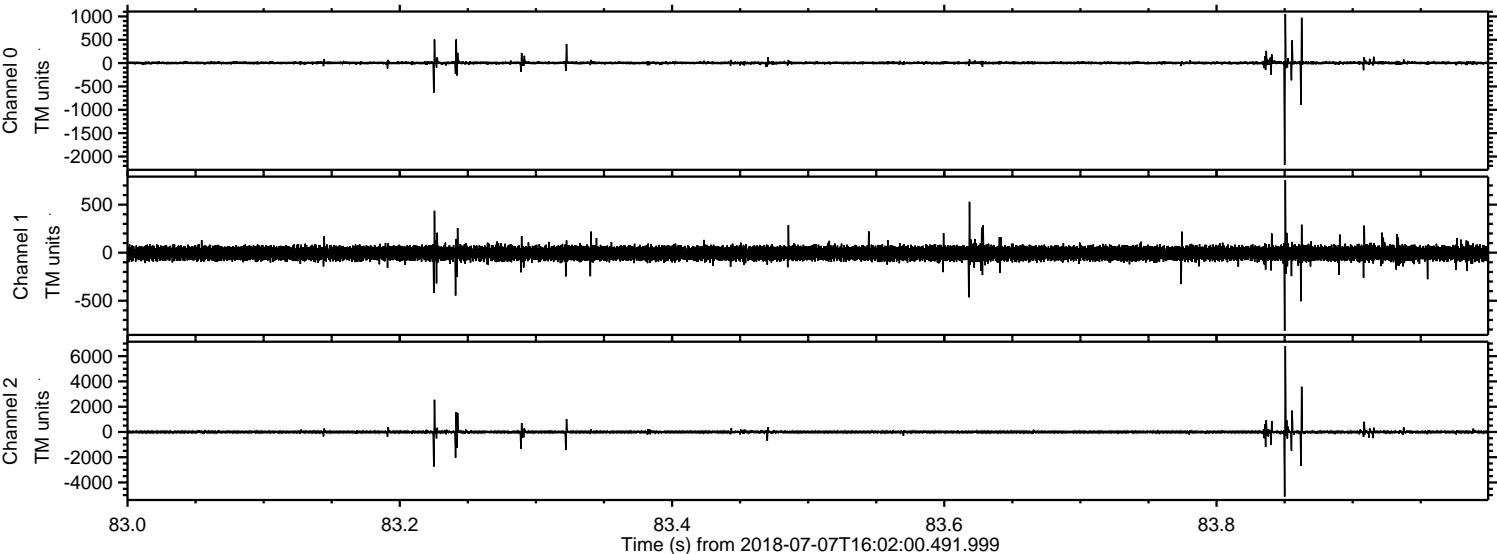


Processed Sat Jul 7 18:10:13 2018 by ELM ver.2012-10-06 from 001__elm20180707_160159__dat00.bin



ELMAVAN 3D WAVEFORMS (Measured data sampled at 50 kHz) 51000 packets of 144 samples from 2018-07-07T16:02:00.491.999. Part 84/147

Processed Sat Jul 7 18:10:14 2018 by ELM ver.2012-10-06 from 001__elm20180707_160159__dat00.bin



Power spectra

Channel 0
mn: -2176
mx: 1052
 μ : 4.7
 σ : 19.3

Channel 1
mn: -815
mx: 754
 μ : -6.0
 σ : 38.4

Channel 2
mn: -5132
mx: 6804
 μ : -5.3
 σ : 67.0

