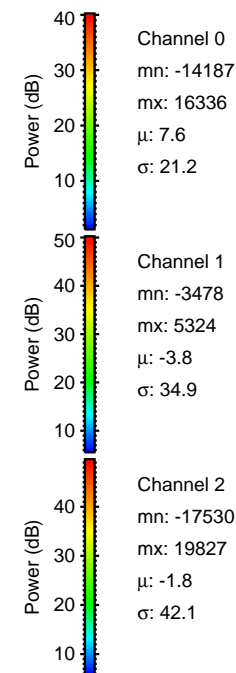
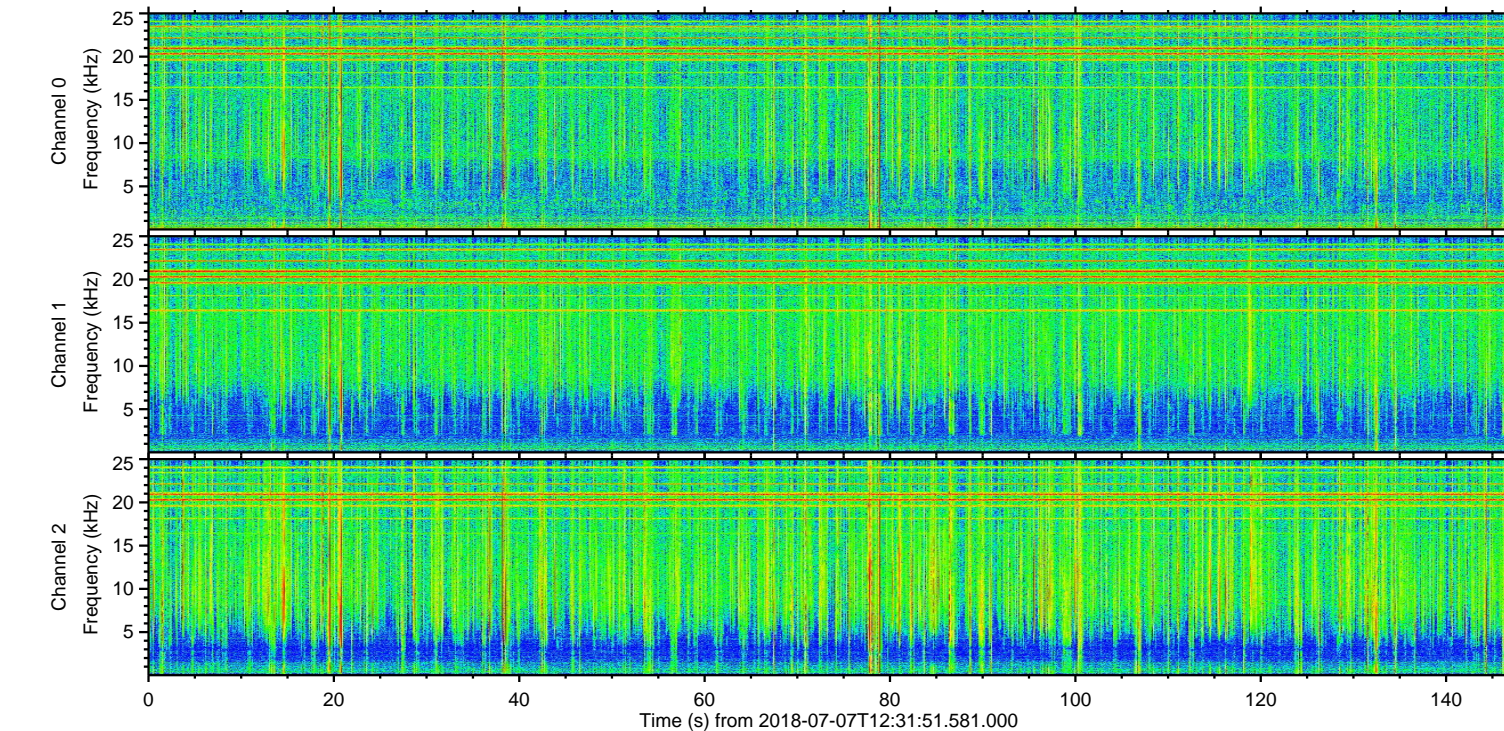
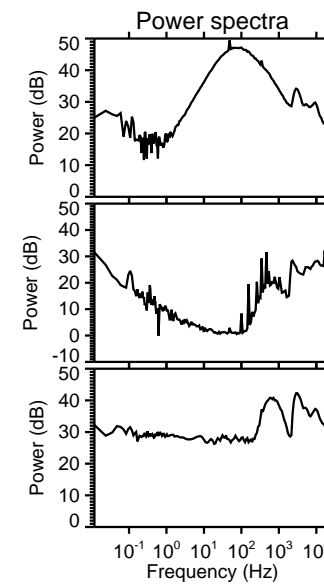
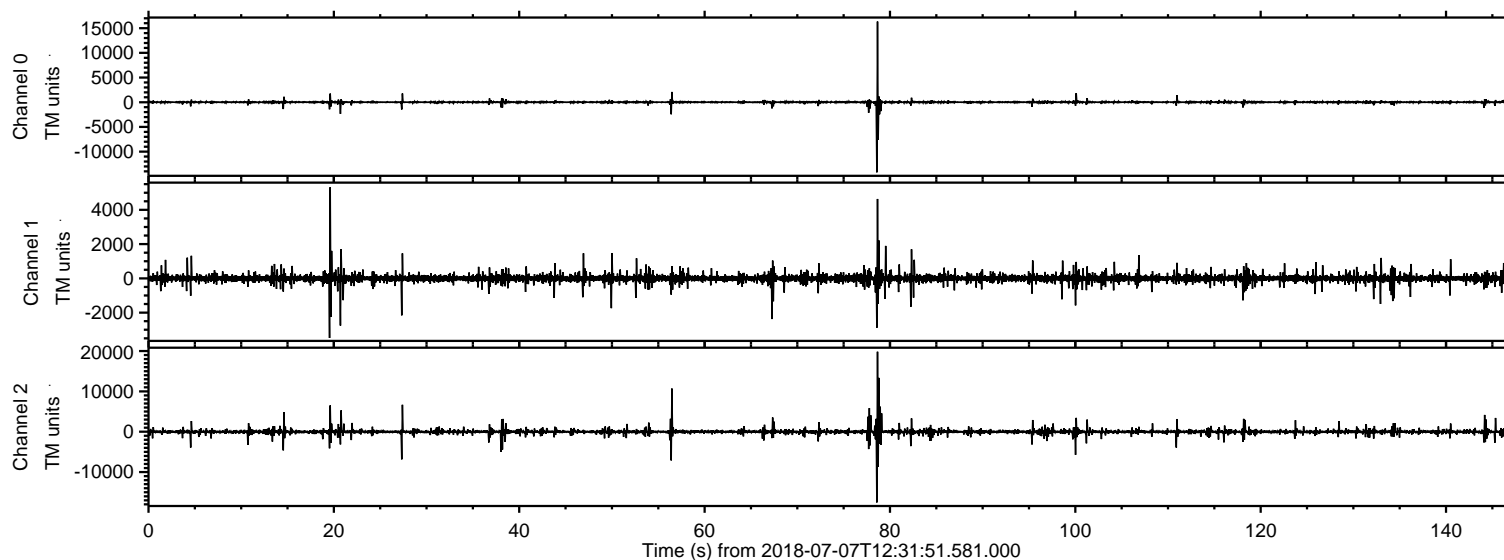


# ELMAVAN 3D WAVEFORMS (Measured data sampled at 50 kHz) 51000 packets of 144 samples from 2018-07-07T12:31:51.581.000.

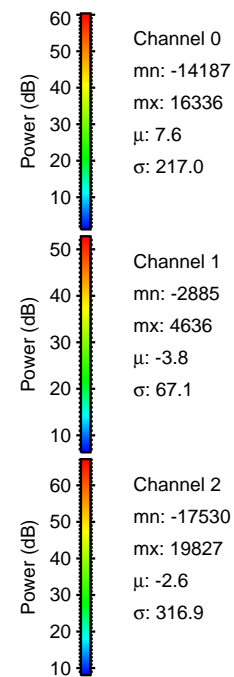
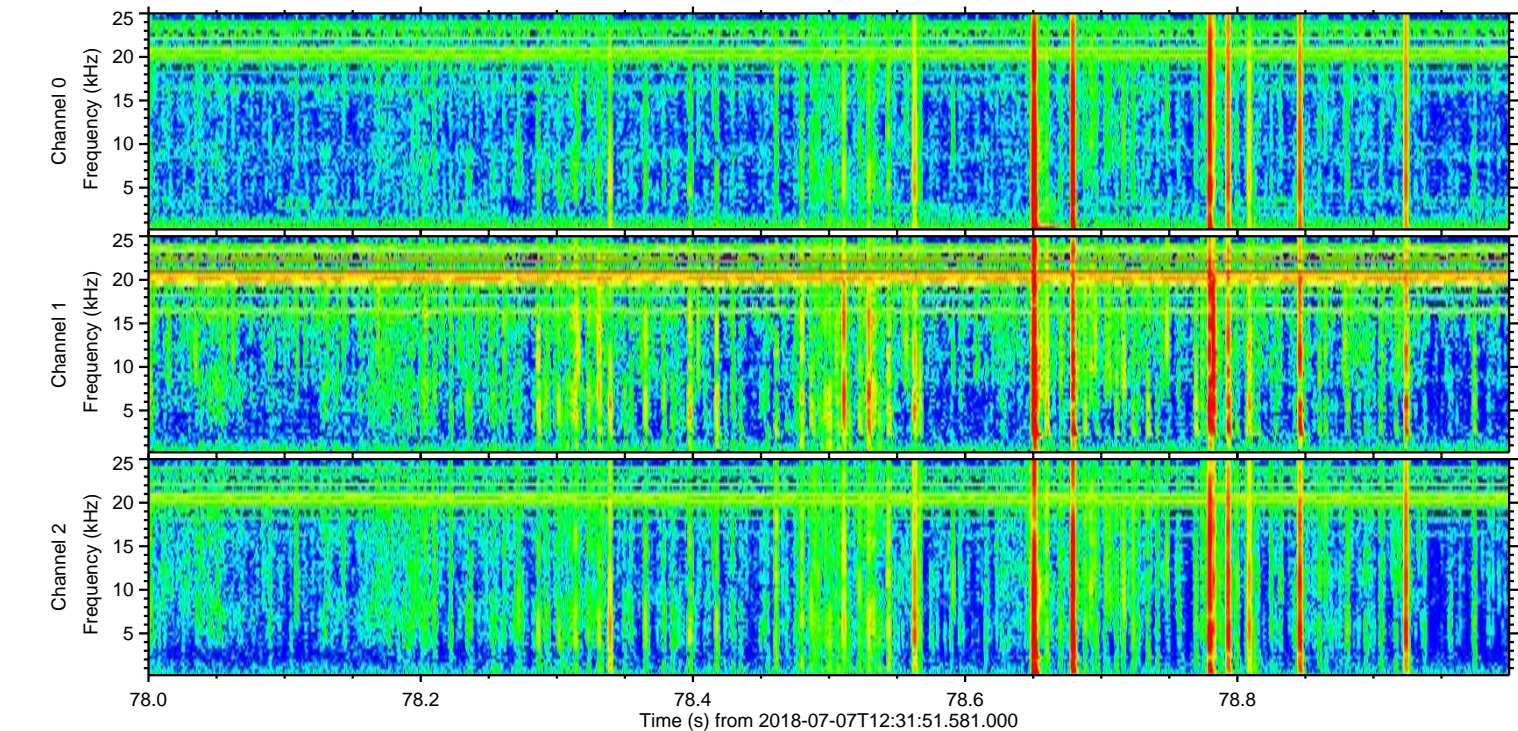
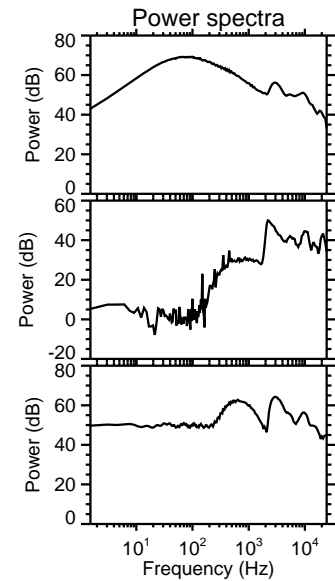
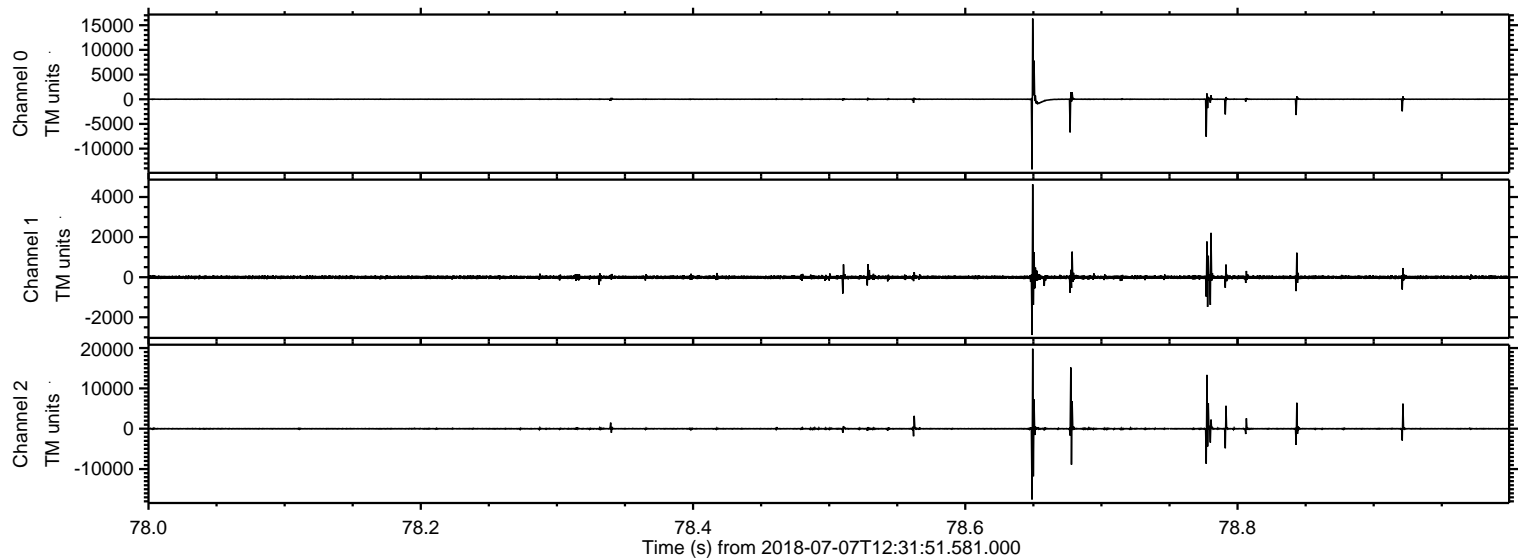
Processed Sat Jul 7 14:39:56 2018 by ELM ver.2012-10-06 from 001\_\_elm20180707\_123150\_\_dat00.bin





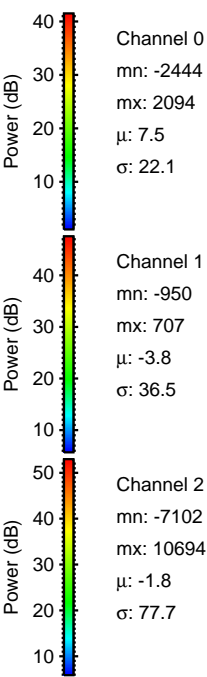
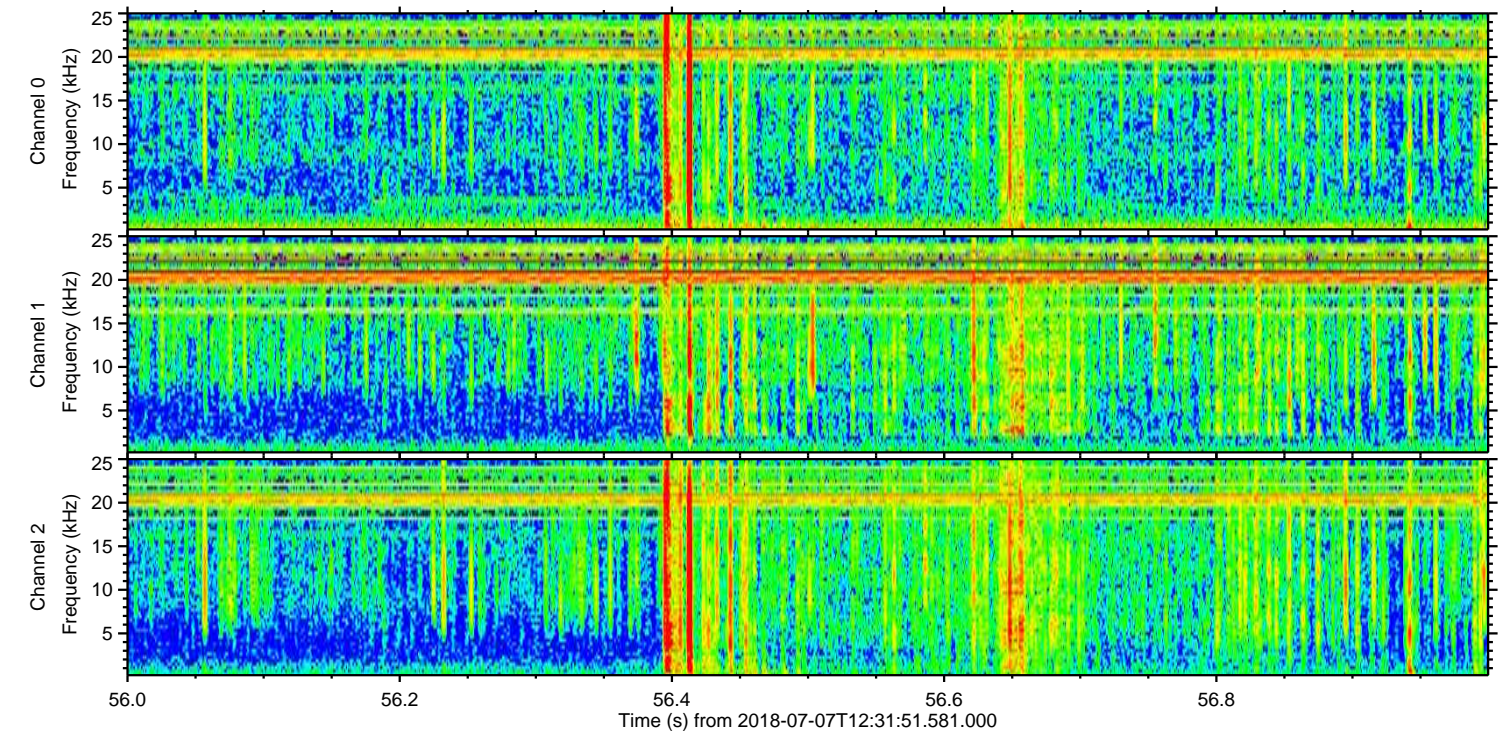
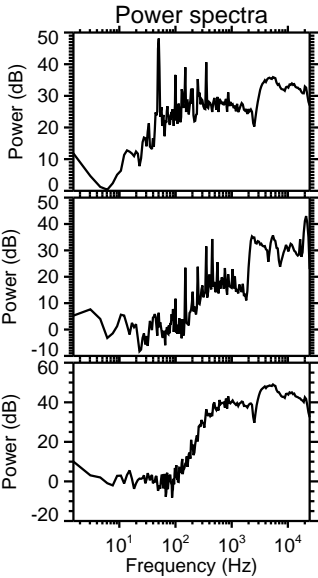
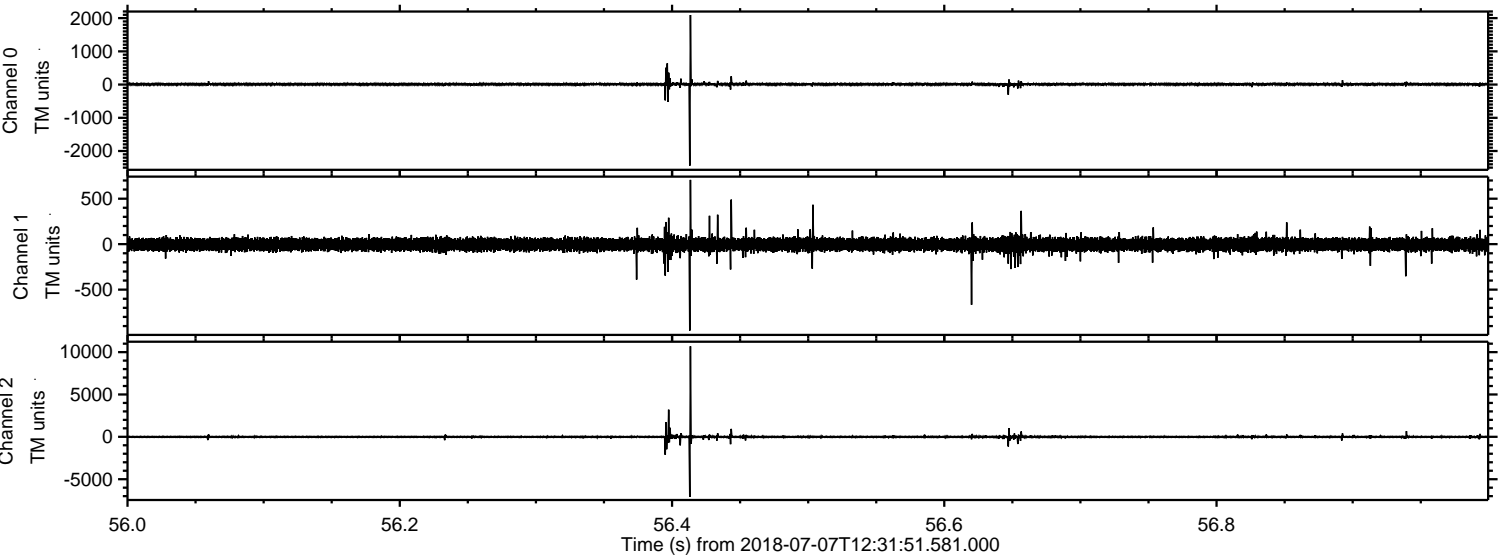
ELMAVAN 3D WAVEFORMS (Measured data sampled at 50 kHz) 51000 packets of 144 samples from 2018-07-07T12:31:51.581.000. Part 79/147

Processed Sat Jul 7 14:40:03 2018 by ELM ver.2012-10-06 from 001\_\_elm20180707\_123150\_\_dat00.bin



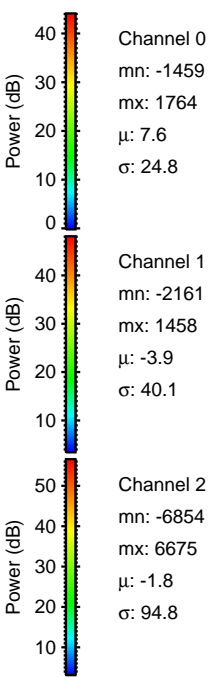
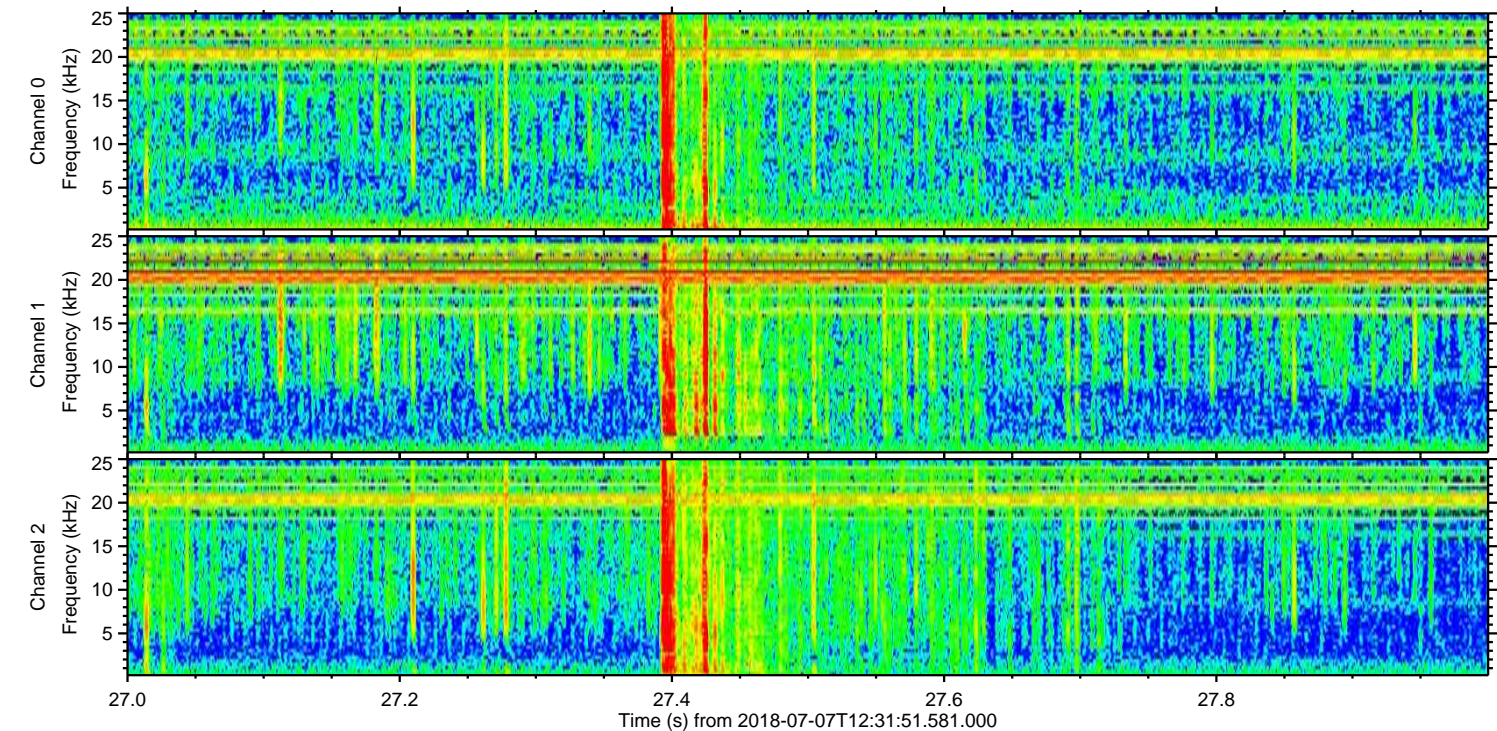
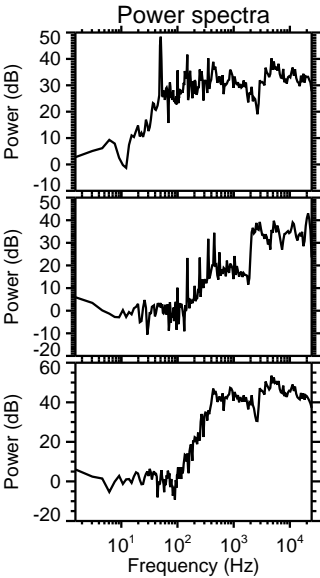
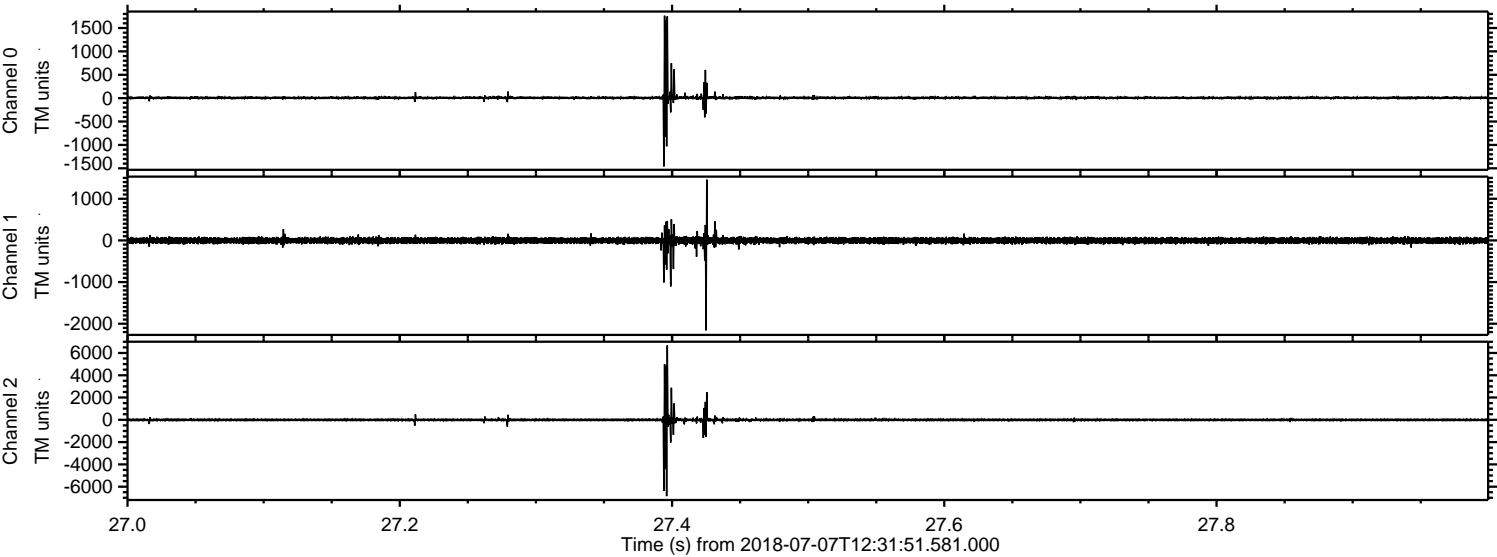


Processed Sat Jul 7 14:40:04 2018 by ELM ver.2012-10-06 from 001\_\_elm20180707\_123150\_\_dat00.bin



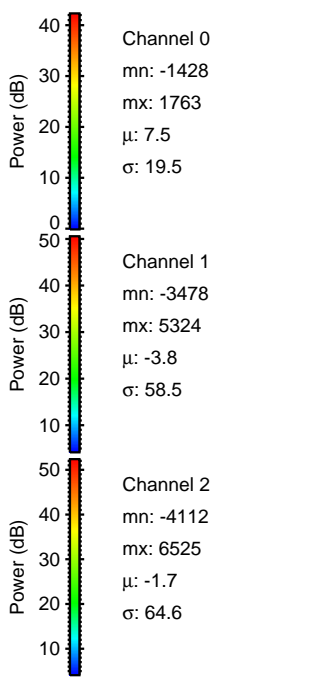
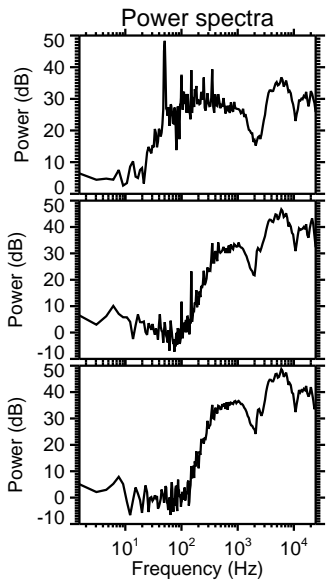
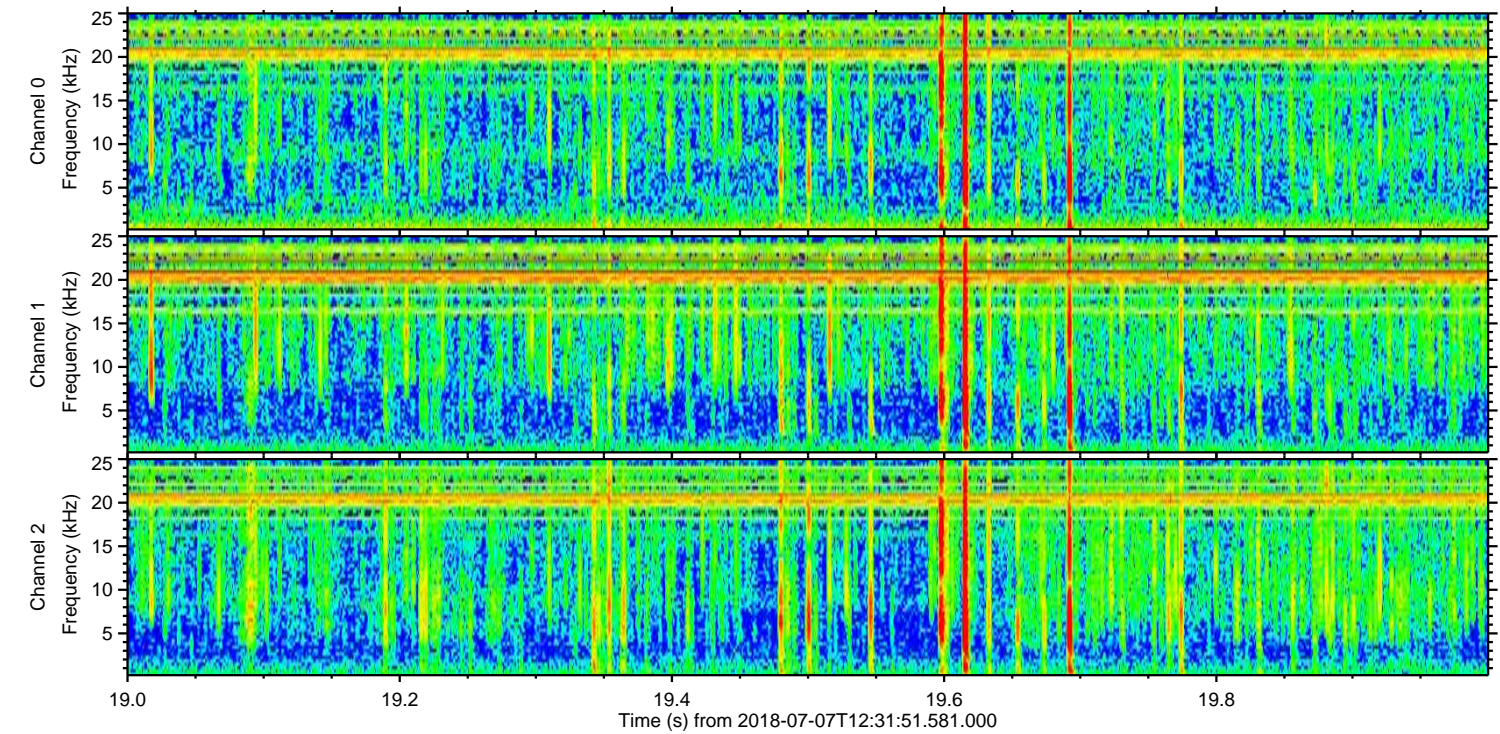
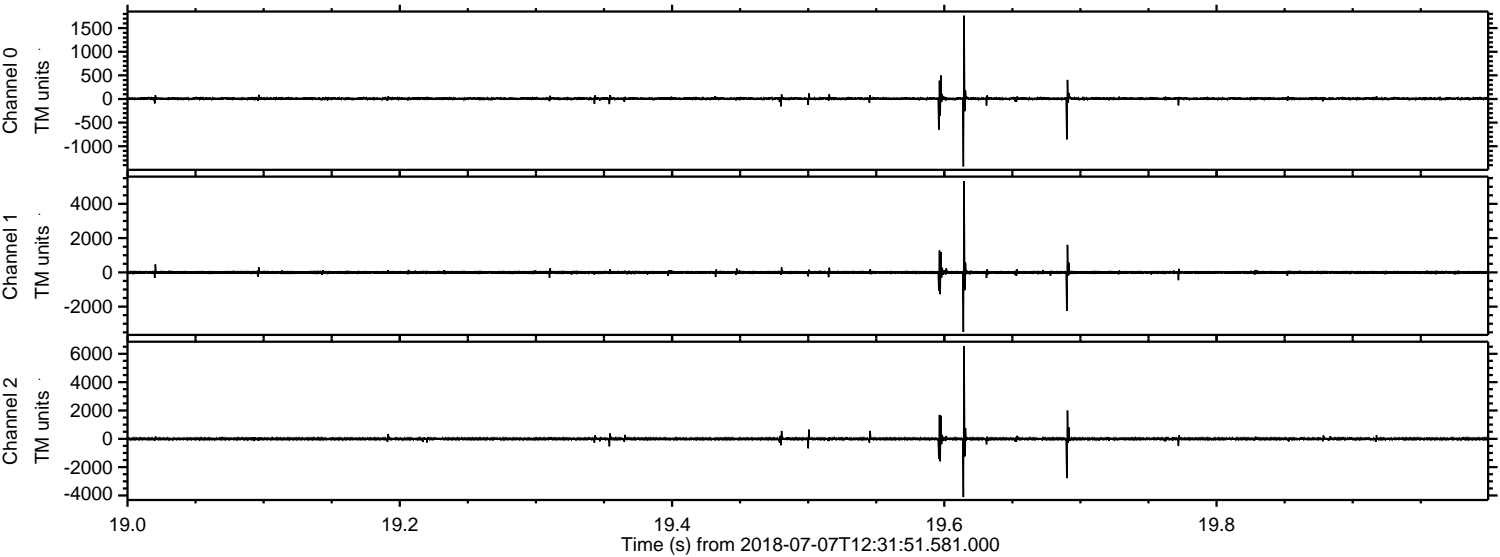


Processed Sat Jul 7 14:40:05 2018 by ELM ver.2012-10-06 from 001\_\_elm20180707\_123150\_\_dat00.bin



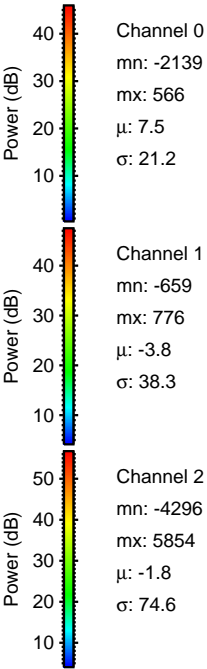
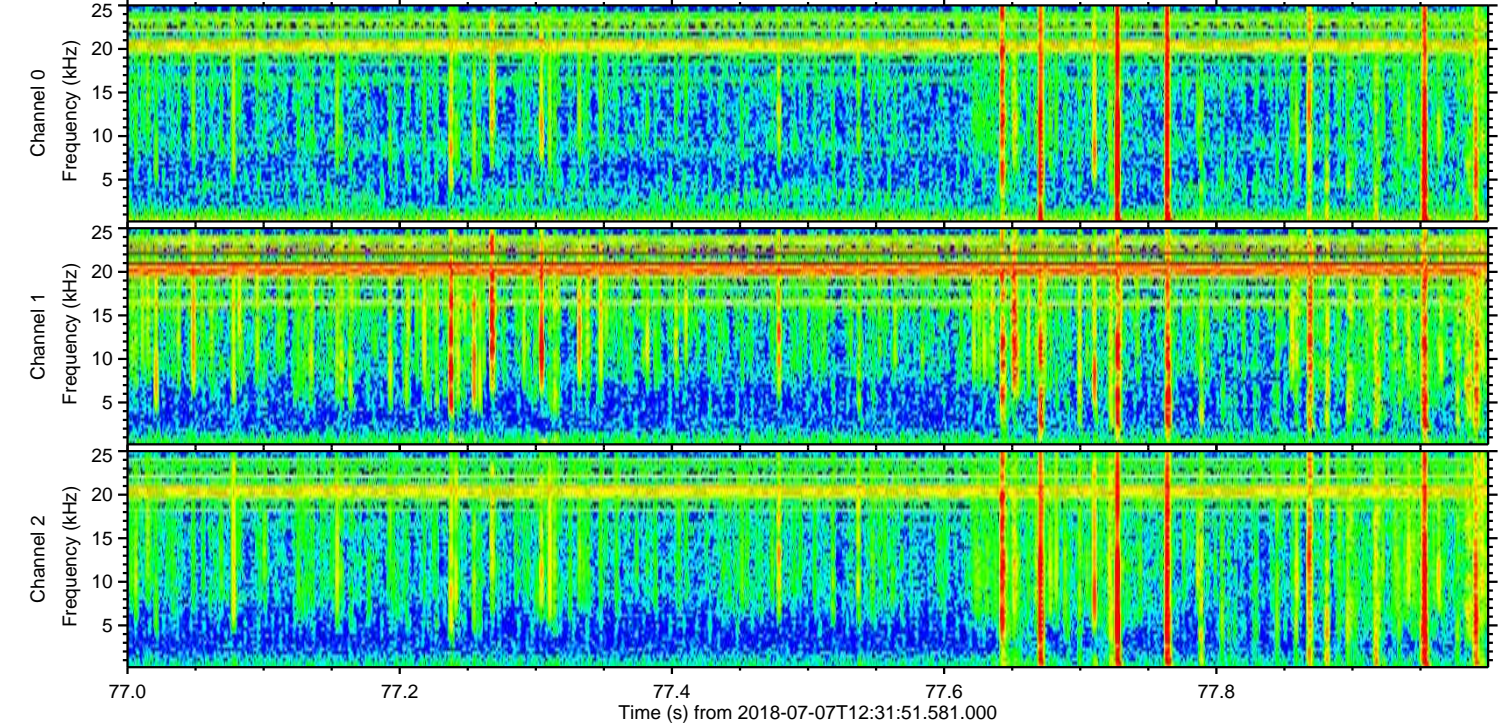
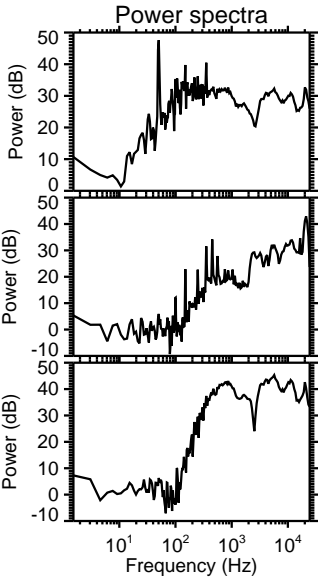
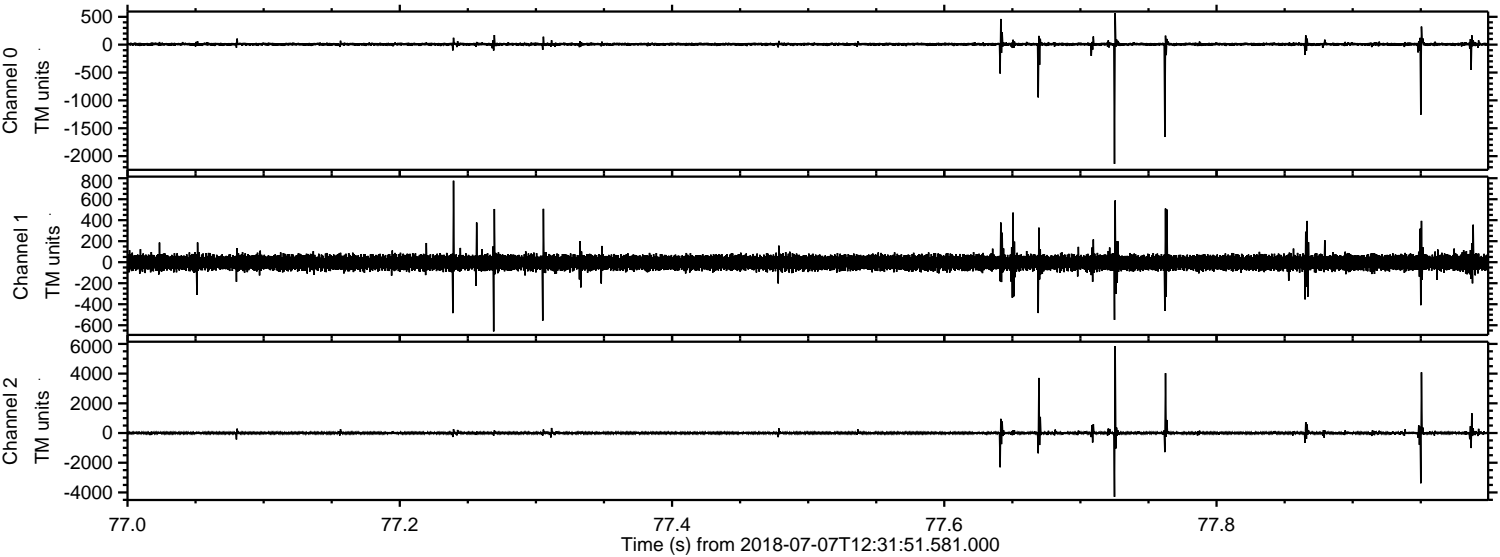


Processed Sat Jul 7 14:40:06 2018 by ELM ver.2012-10-06 from 001\_\_elm20180707\_123150\_\_dat00.bin





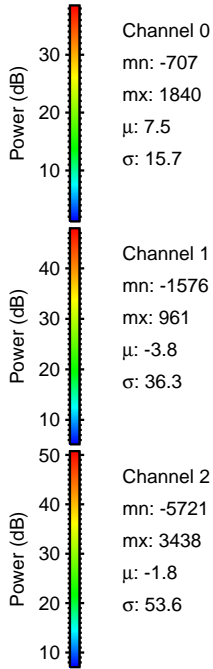
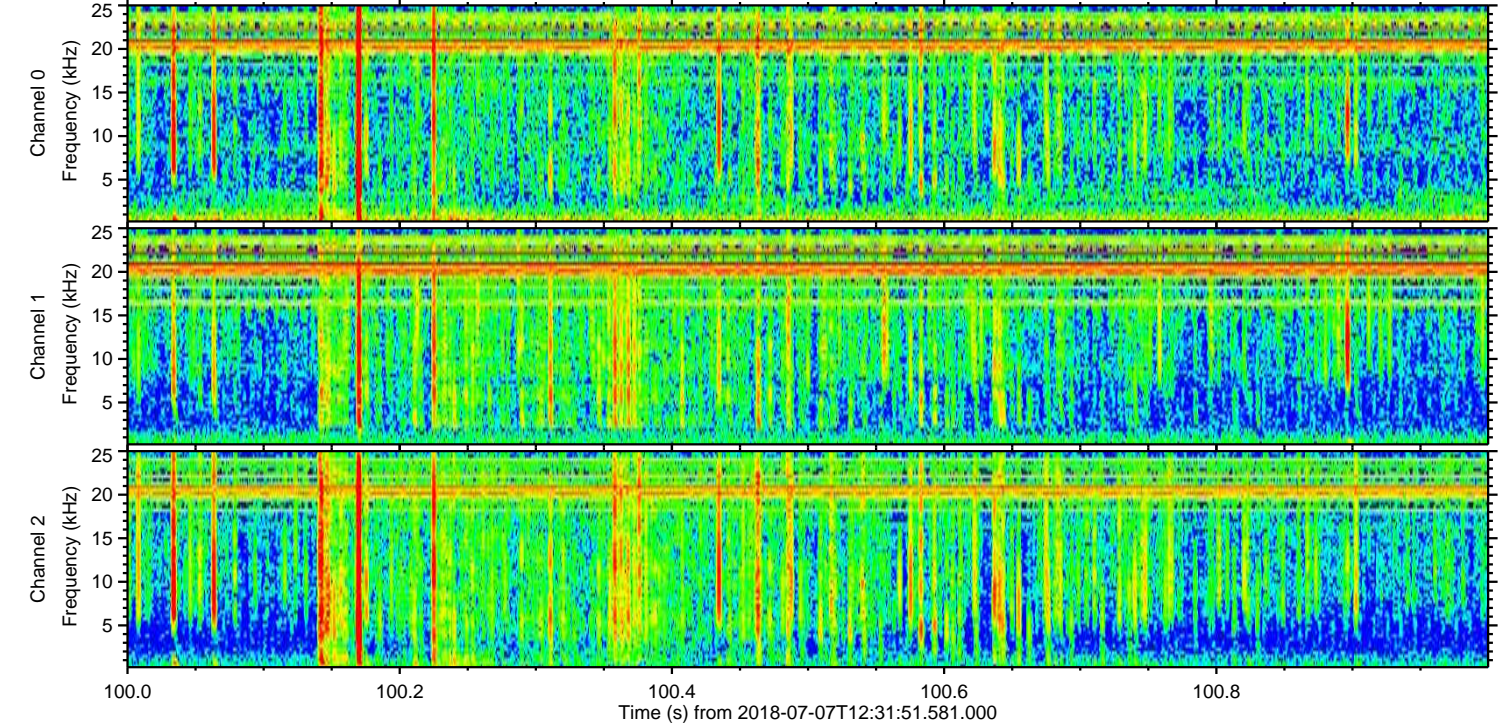
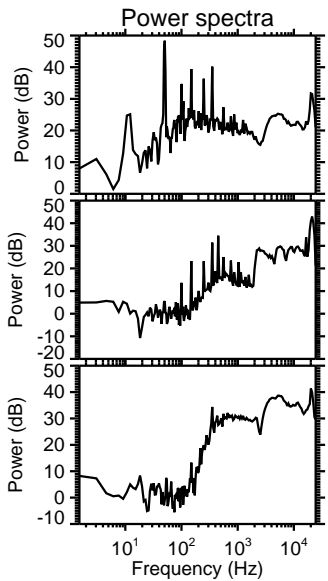
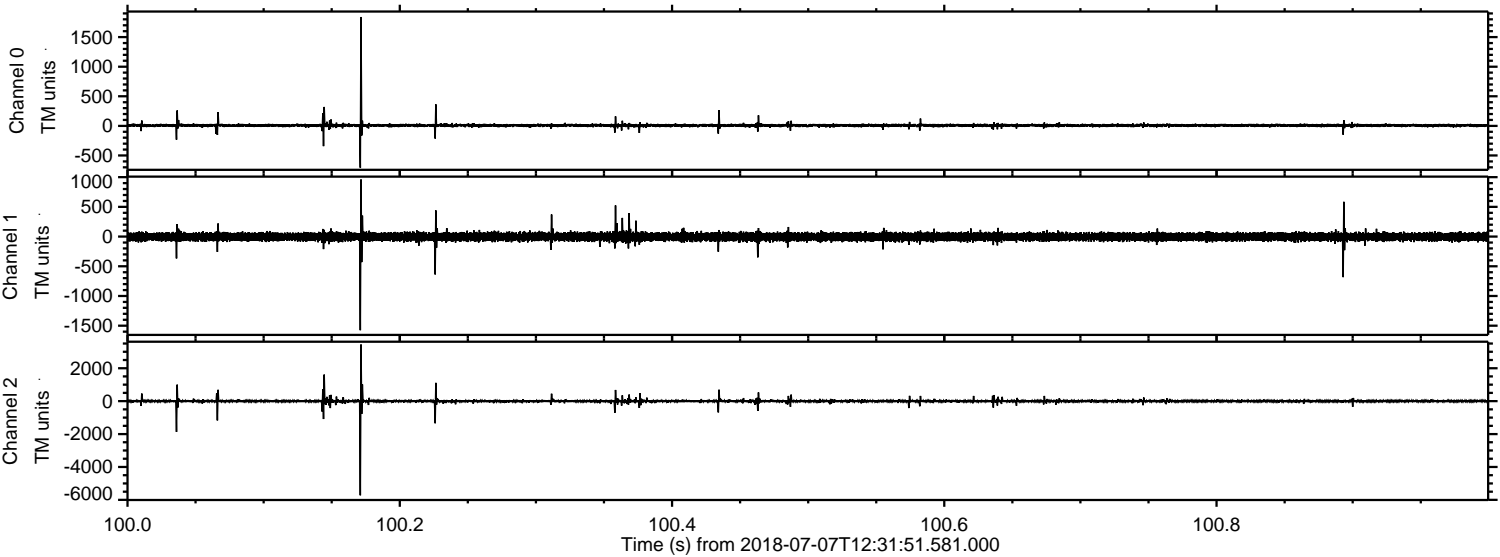
Processed Sat Jul 7 14:40:06 2018 by ELM ver.2012-10-06 from 001\_\_elm20180707\_123150\_\_dat00.bin





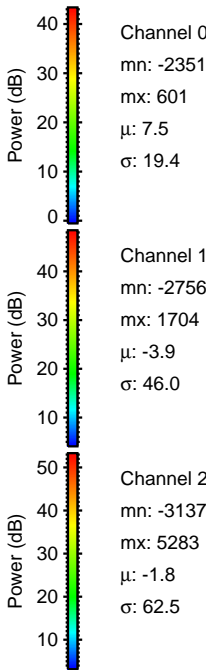
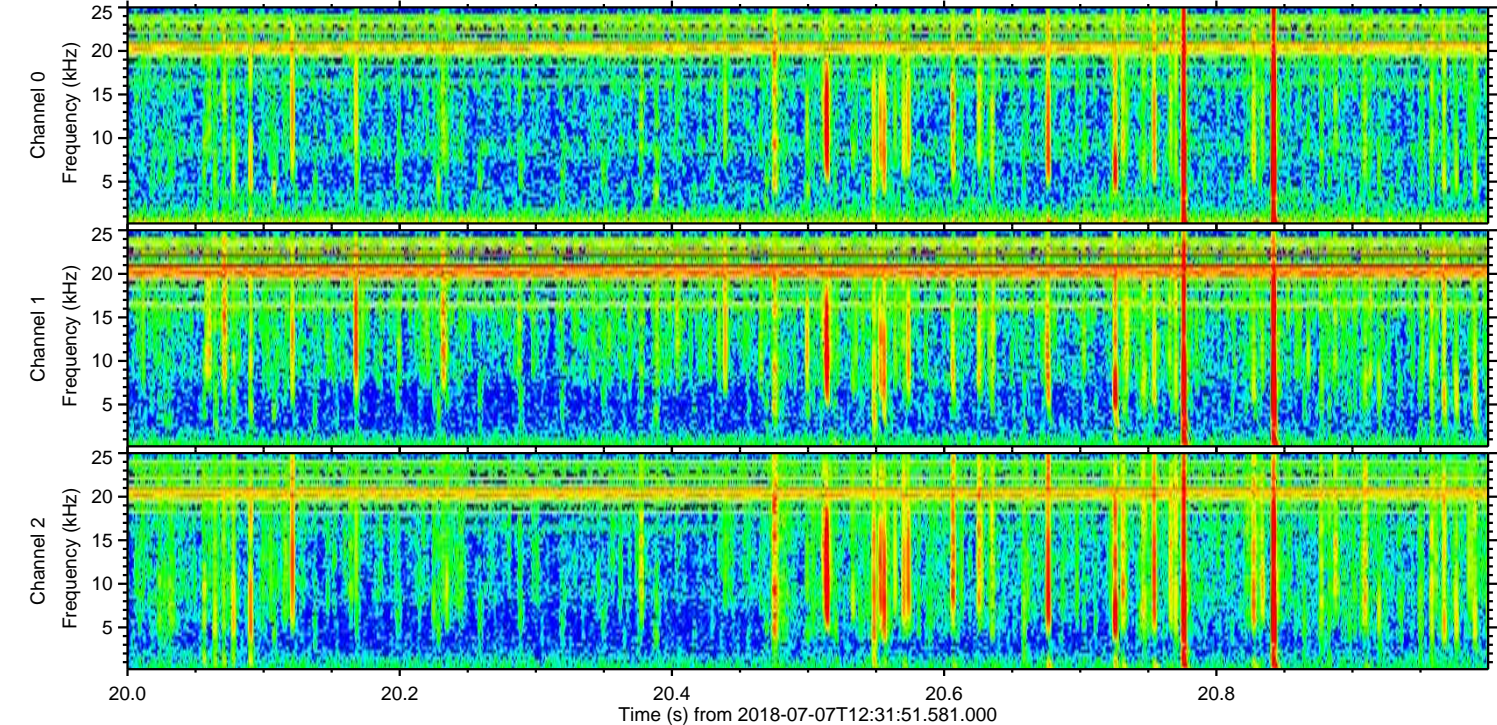
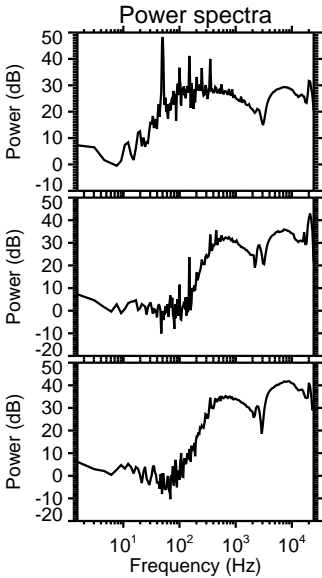
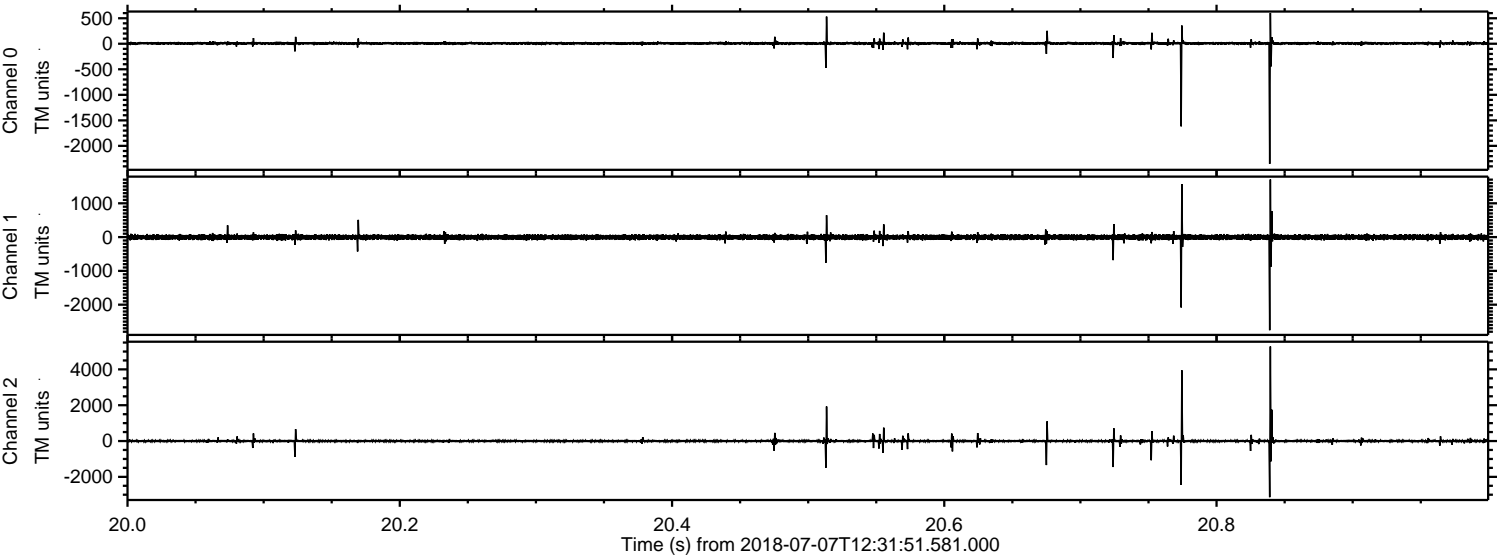
ELMAVAN 3D WAVEFORMS (Measured data sampled at 50 kHz) 51000 packets of 144 samples from 2018-07-07T12:31:51.581.000. Part 101/147

Processed Sat Jul 7 14:40:07 2018 by ELM ver.2012-10-06 from 001\_\_elm20180707\_123150\_\_dat00.bin



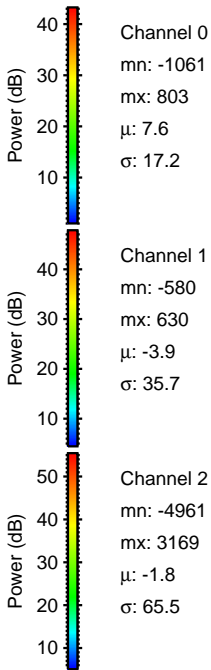
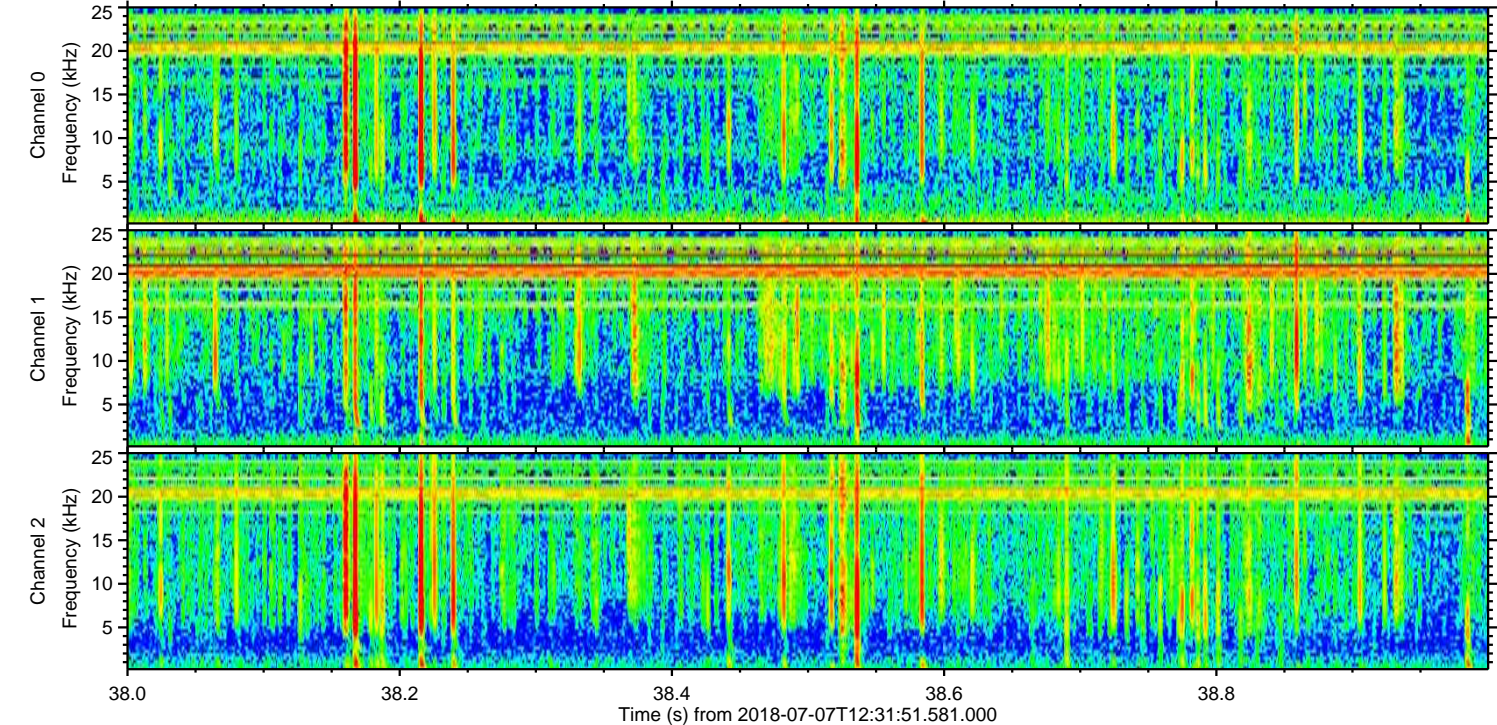
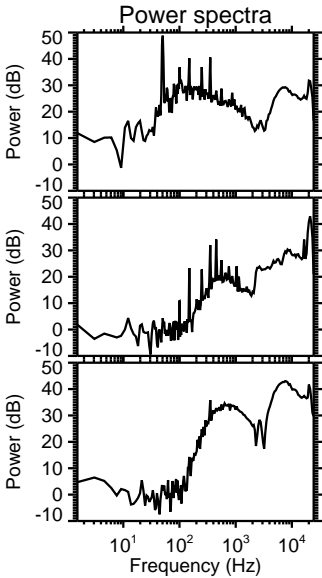
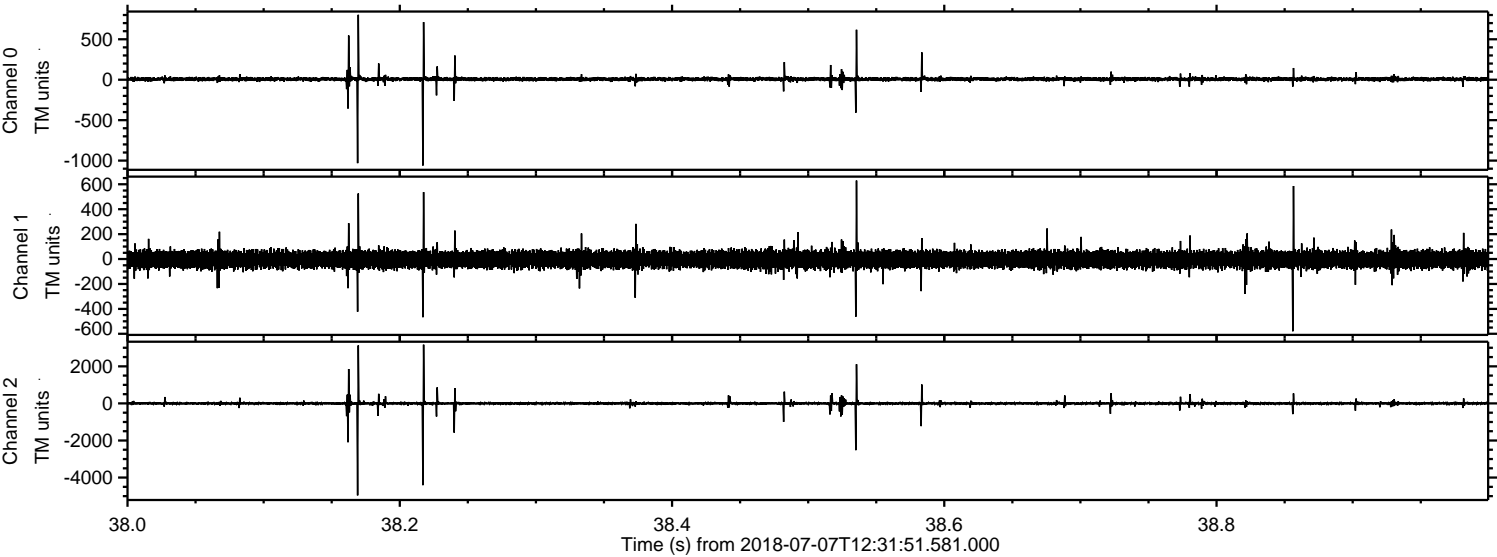


Processed Sat Jul 7 14:40:08 2018 by ELM ver.2012-10-06 from 001\_\_elm20180707\_123150\_\_dat00.bin





Processed Sat Jul 7 14:40:09 2018 by ELM ver.2012-10-06 from 001\_\_elm20180707\_123150\_\_dat00.bin





Processed Sat Jul 7 14:40:10 2018 by ELM ver.2012-10-06 from 001\_\_elm20180707\_123150\_\_dat00.bin

