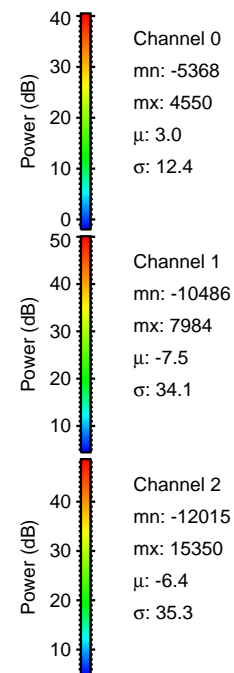
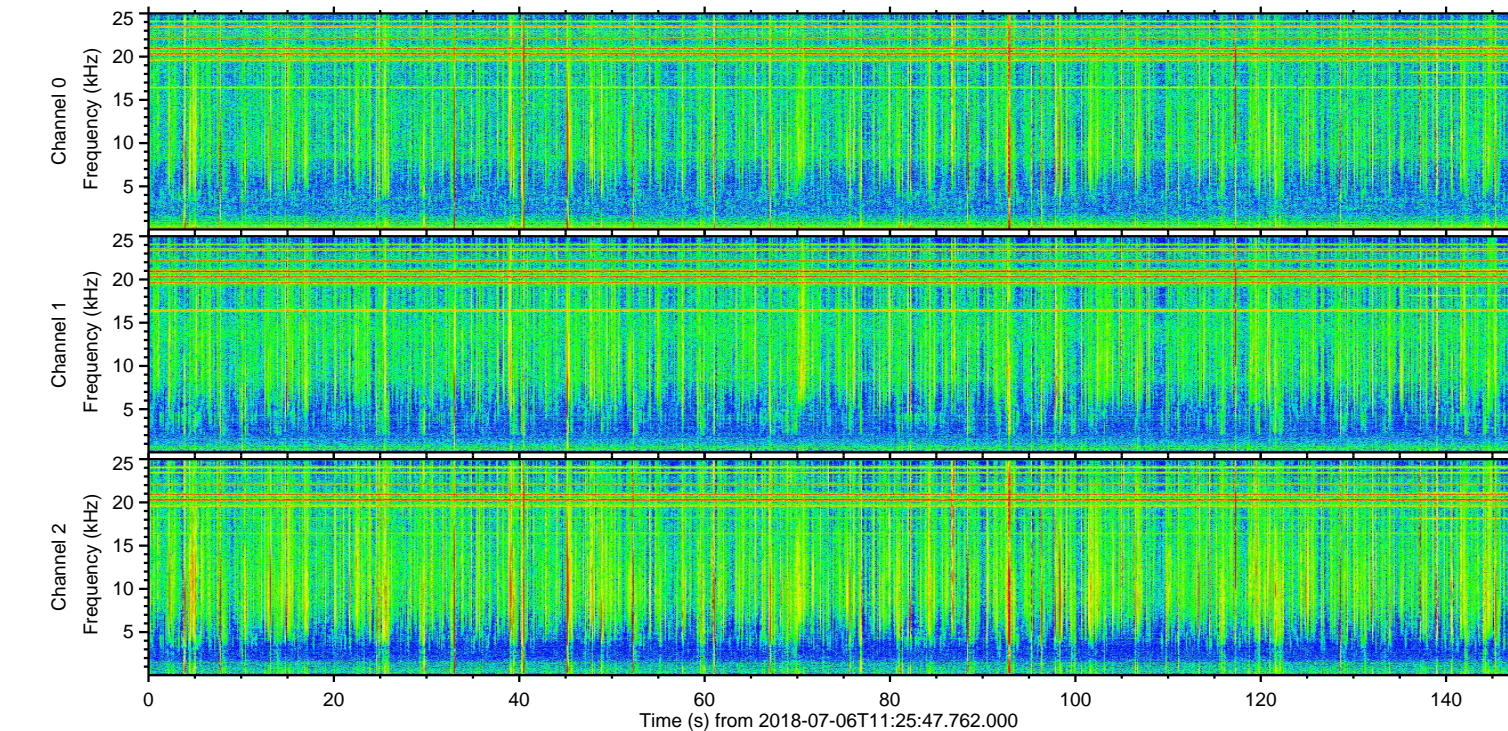
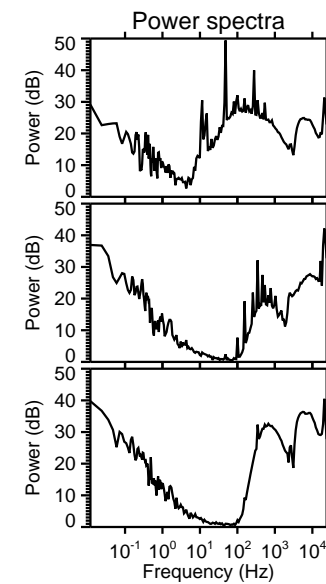
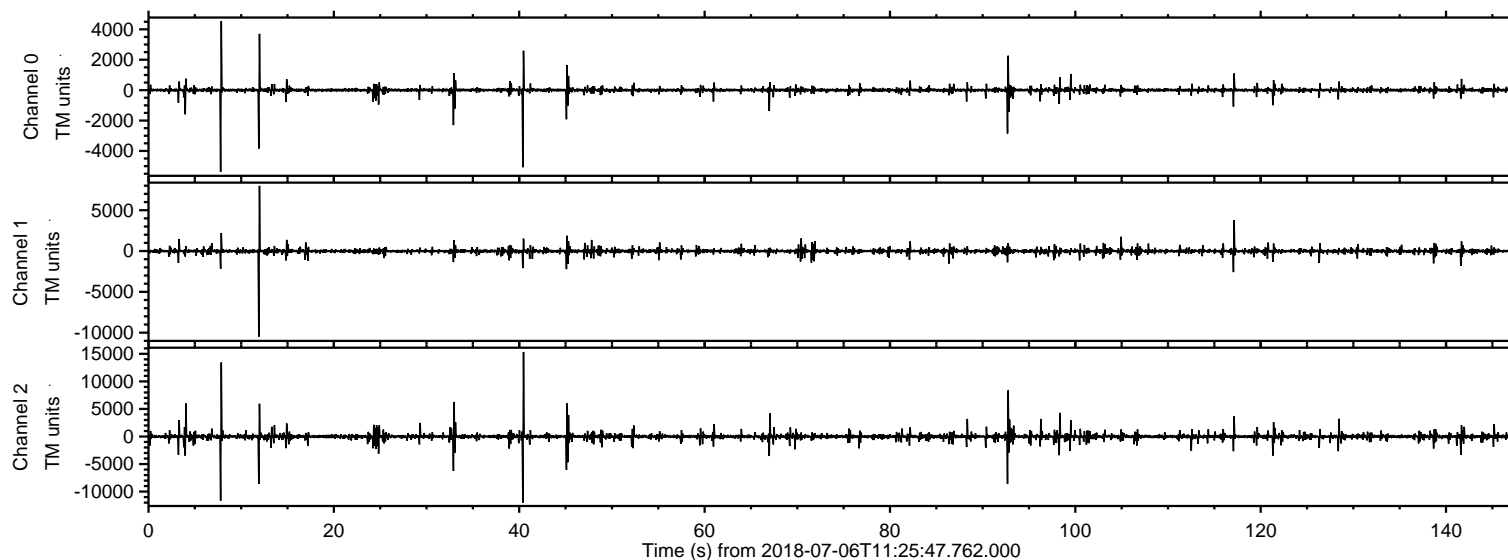


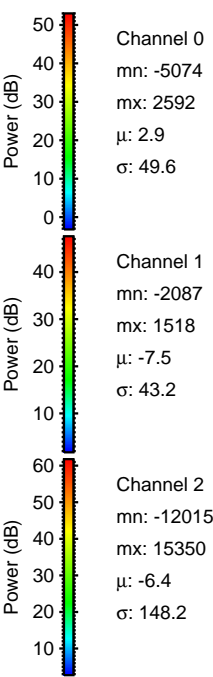
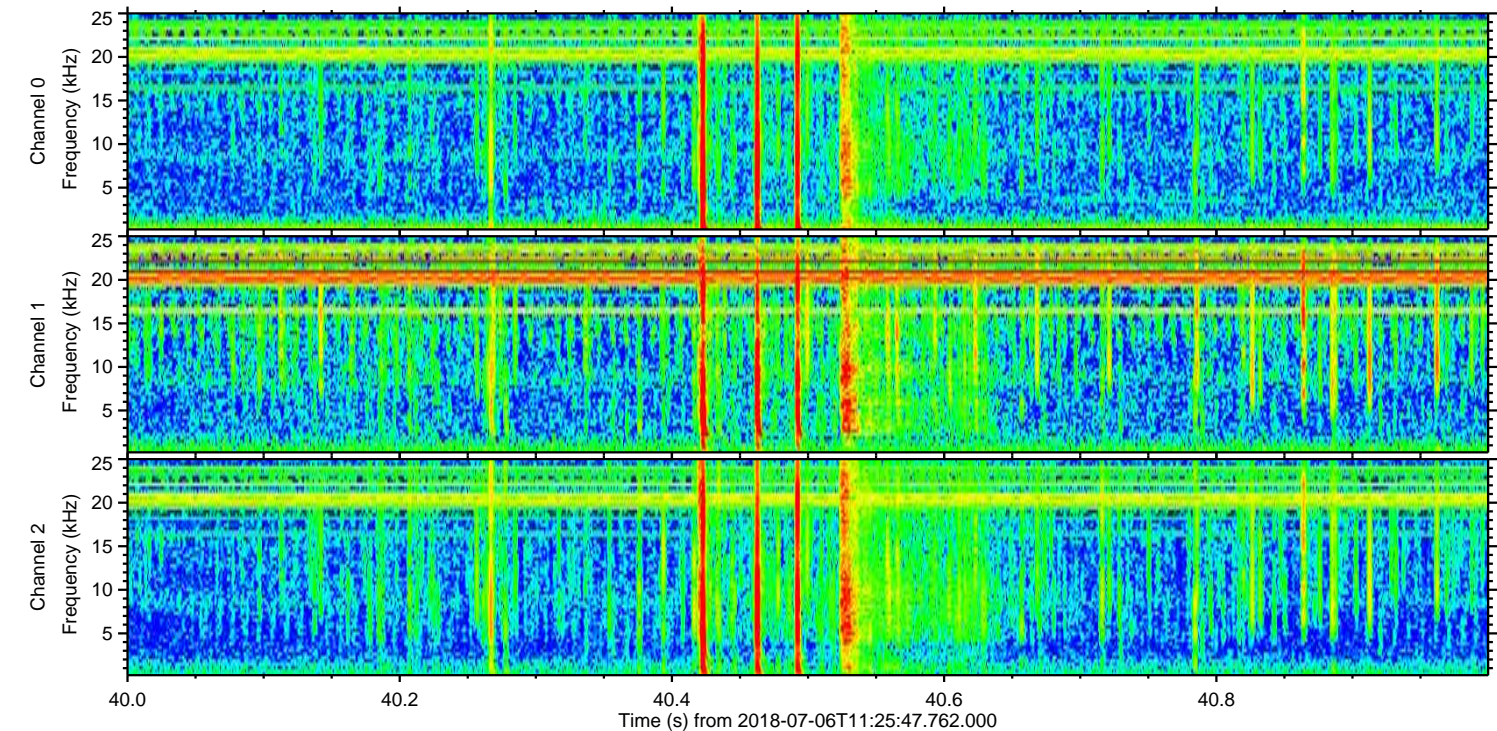
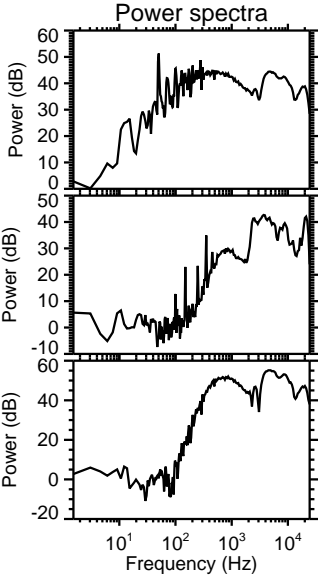
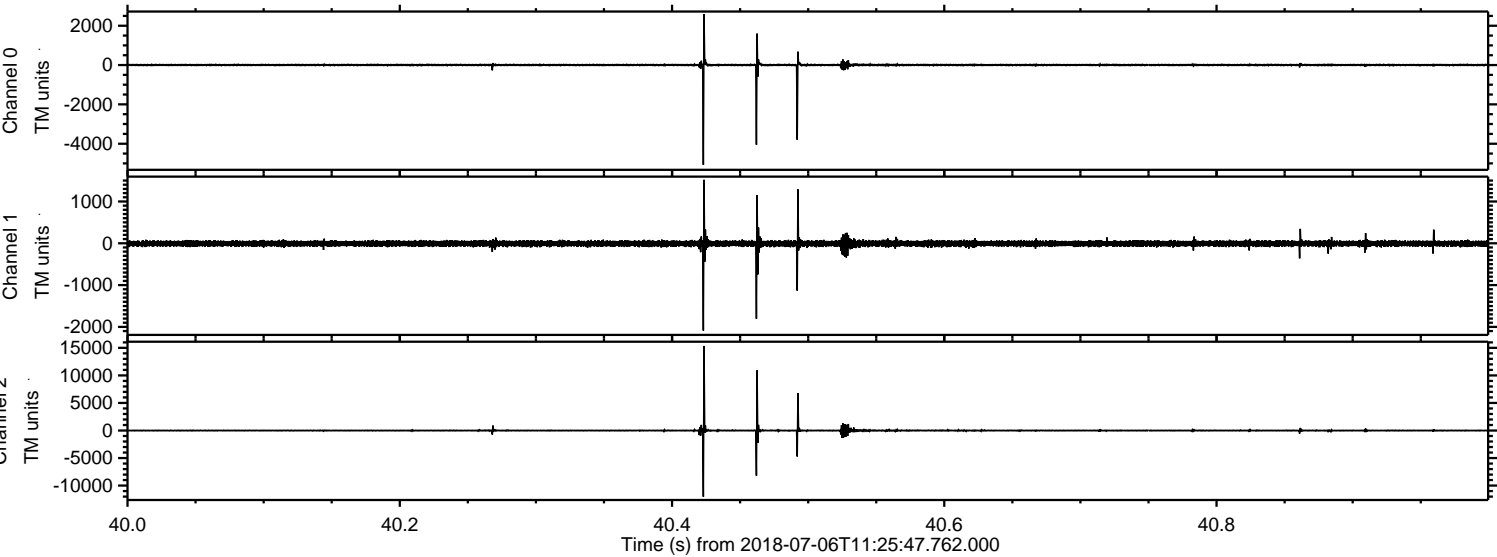
ELMAVAN 3D WAVEFORMS (Measured data sampled at 50 kHz) 51000 packets of 144 samples from 2018-07-06T11:25:47.762.000.

Processed Fri Jul 6 13:33:58 2018 by ELM ver.2012-10-06 from 001\_\_elm20180706\_112546\_\_dat00.bin



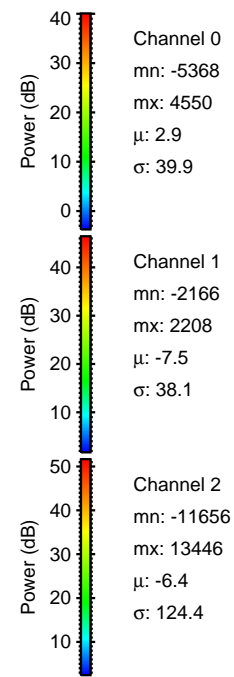
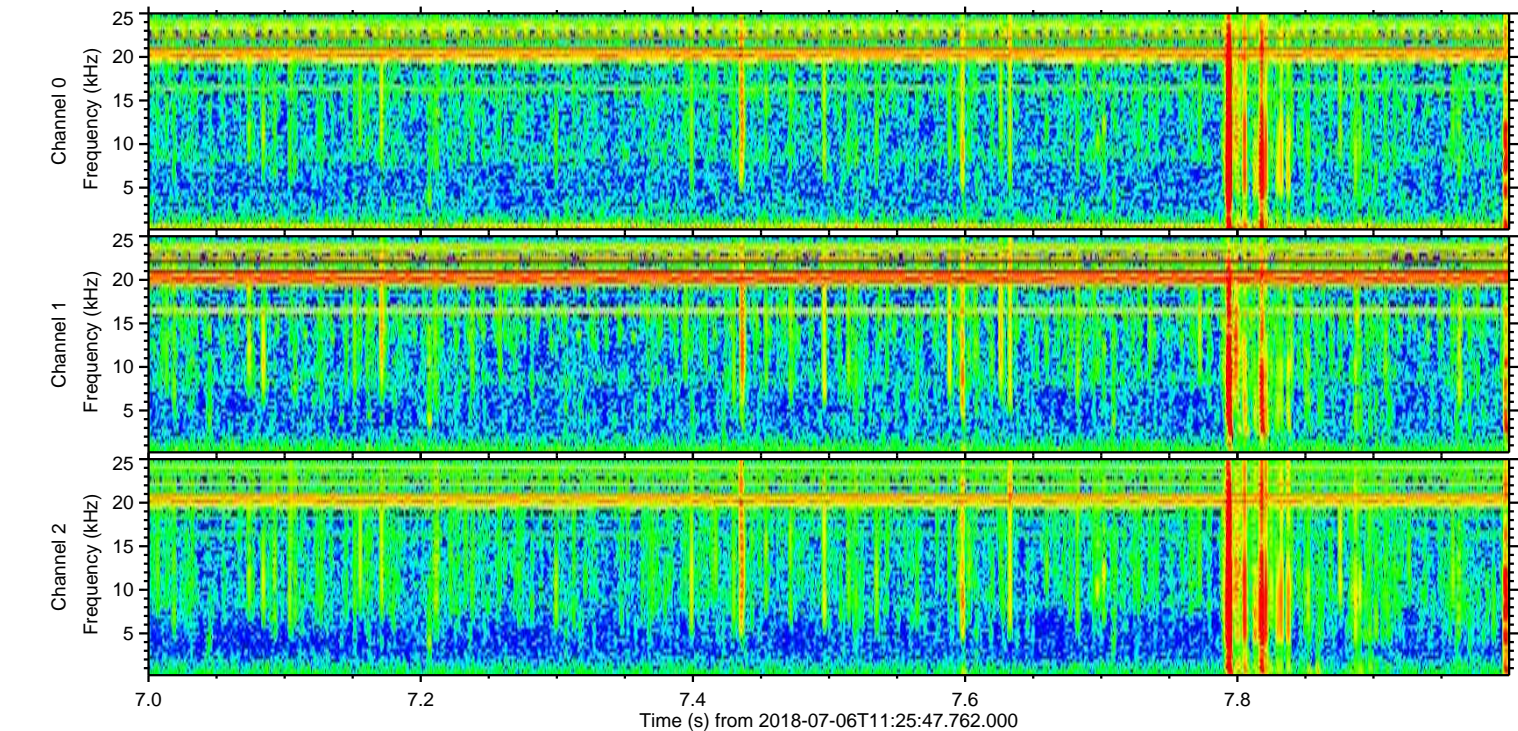
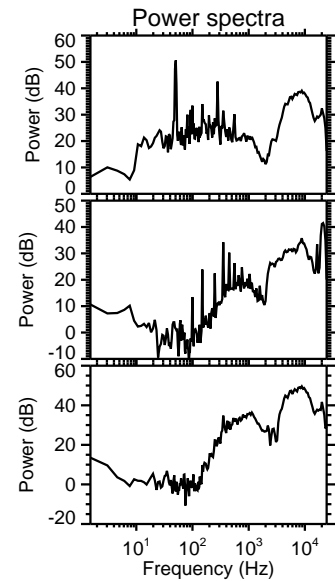
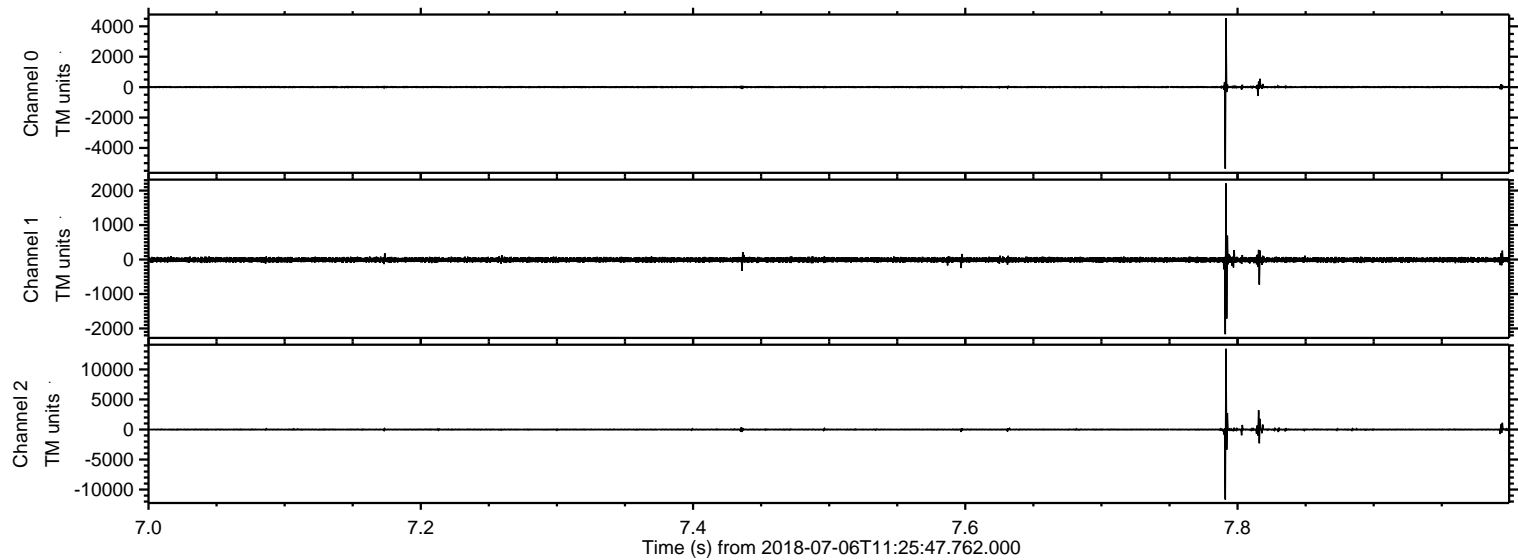


Processed Fri Jul 6 13:34:07 2018 by ELM ver.2012-10-06 from 001\_\_elm20180706\_112546\_\_dat00.bin



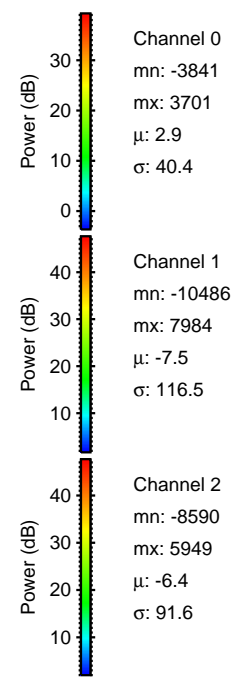
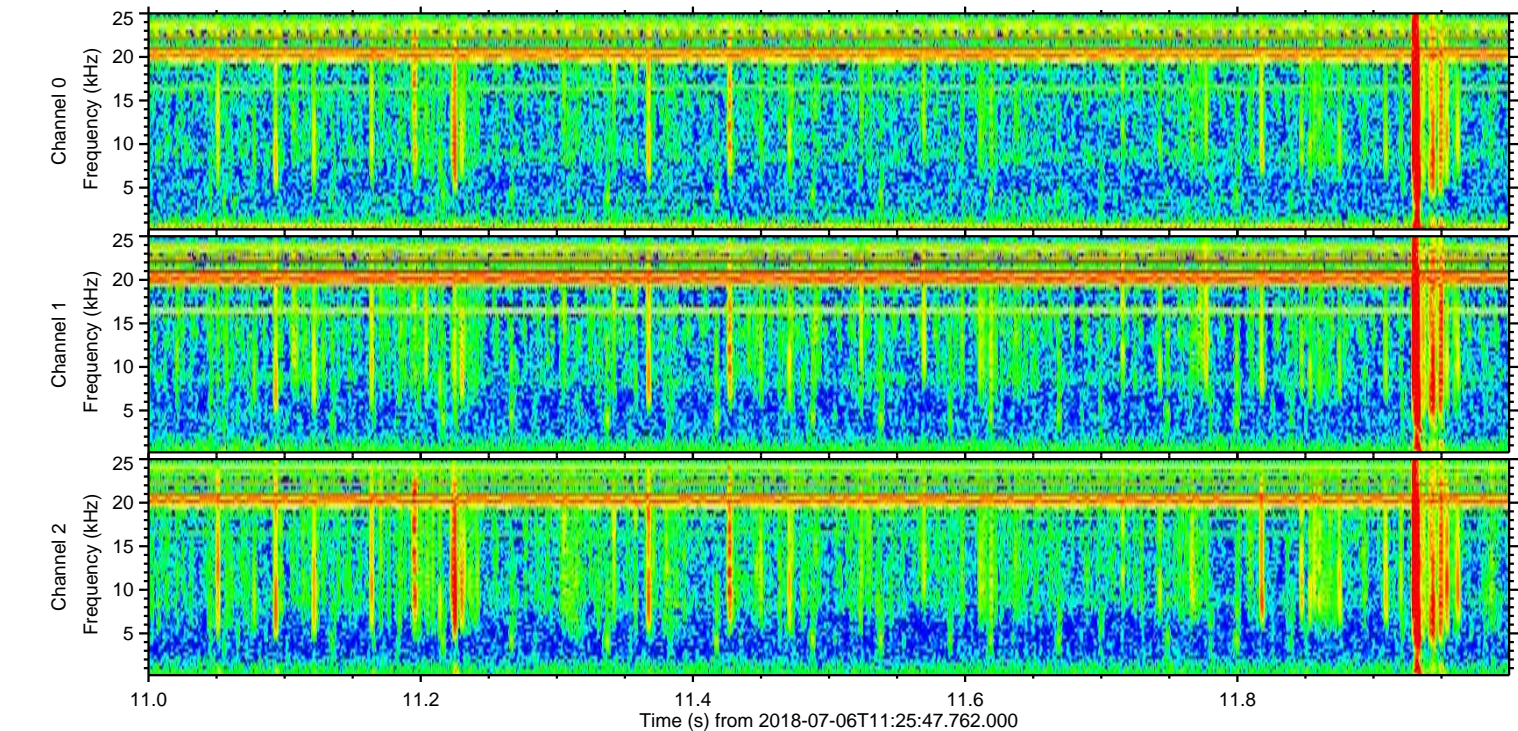
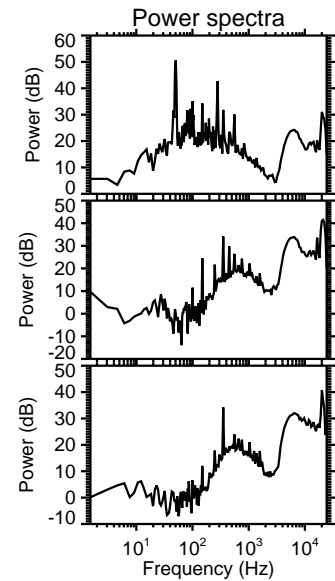
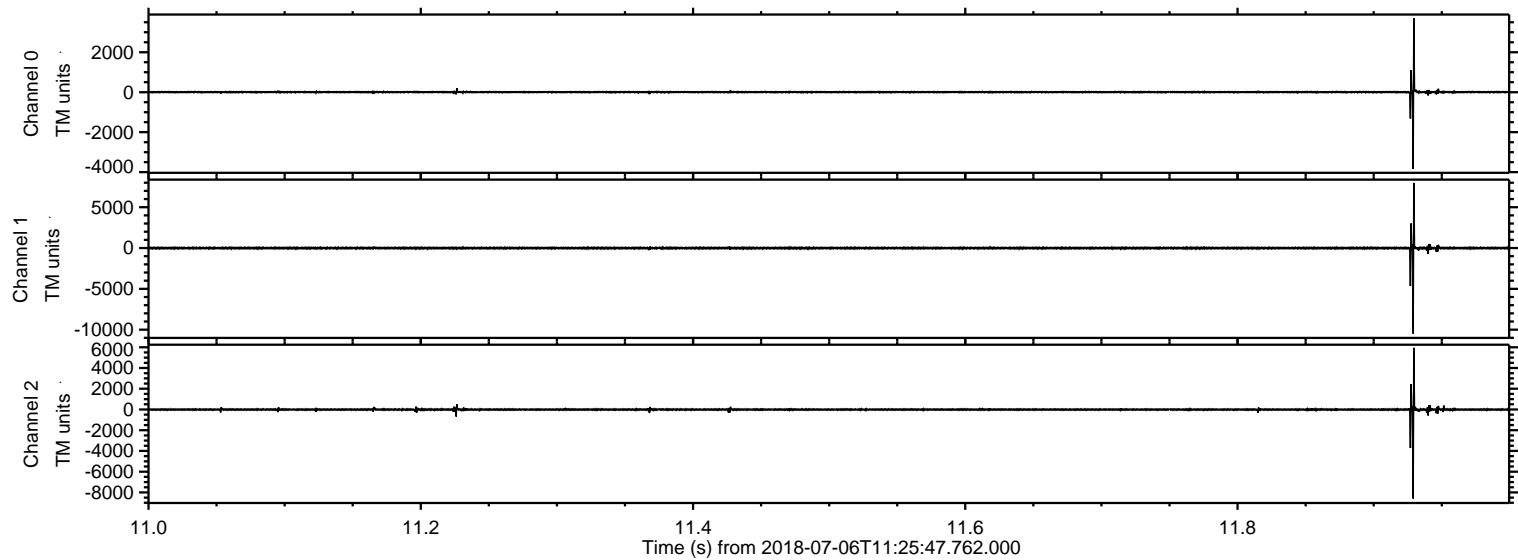


Processed Fri Jul 6 13:34:08 2018 by ELM ver.2012-10-06 from 001\_\_elm20180706\_112546\_\_dat00.bin



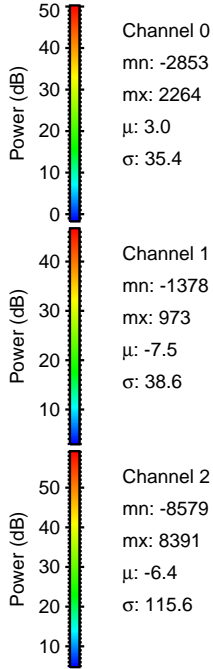
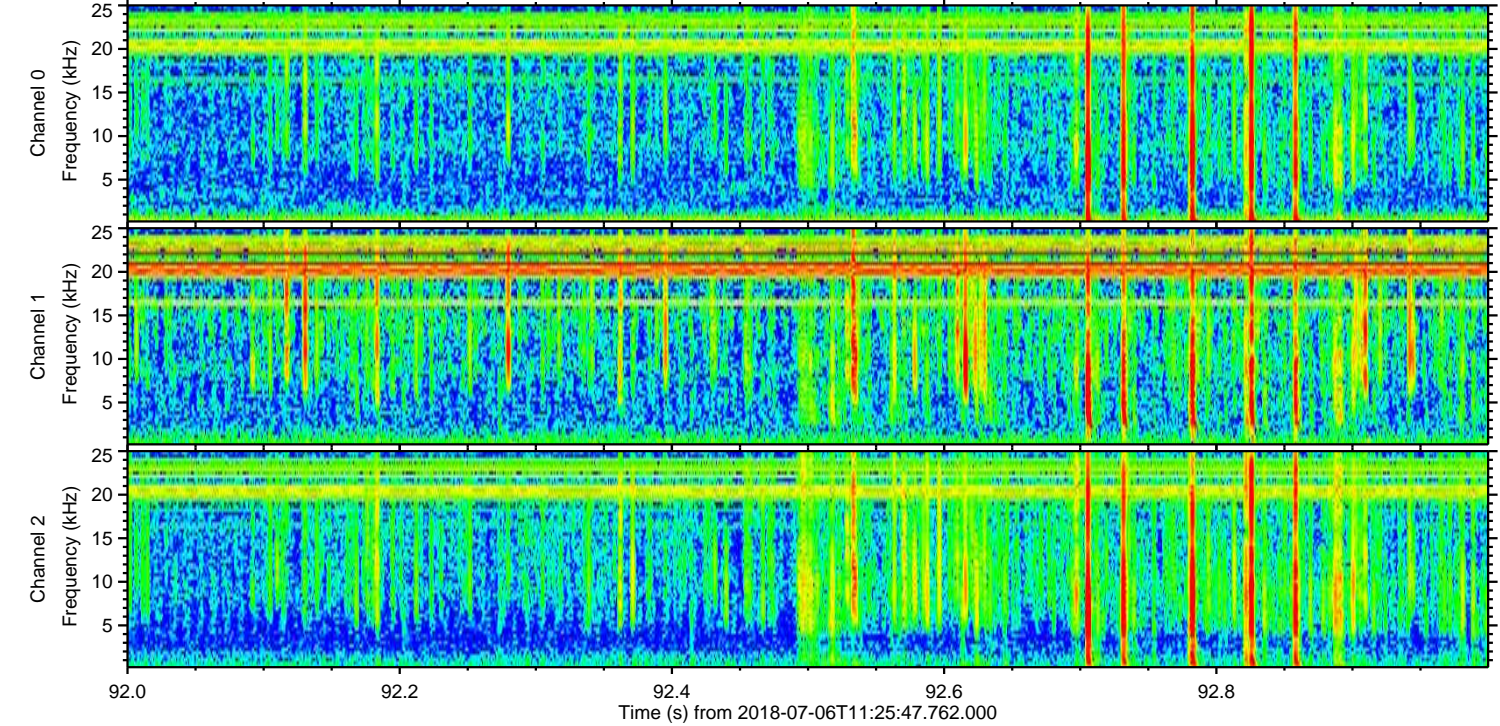
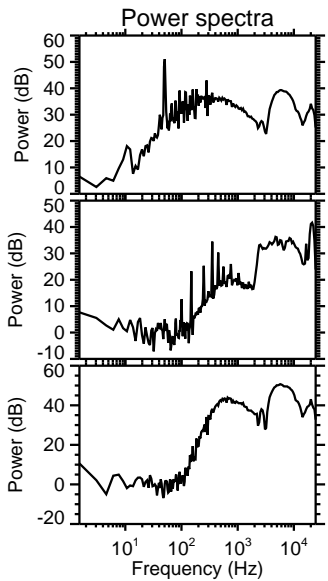
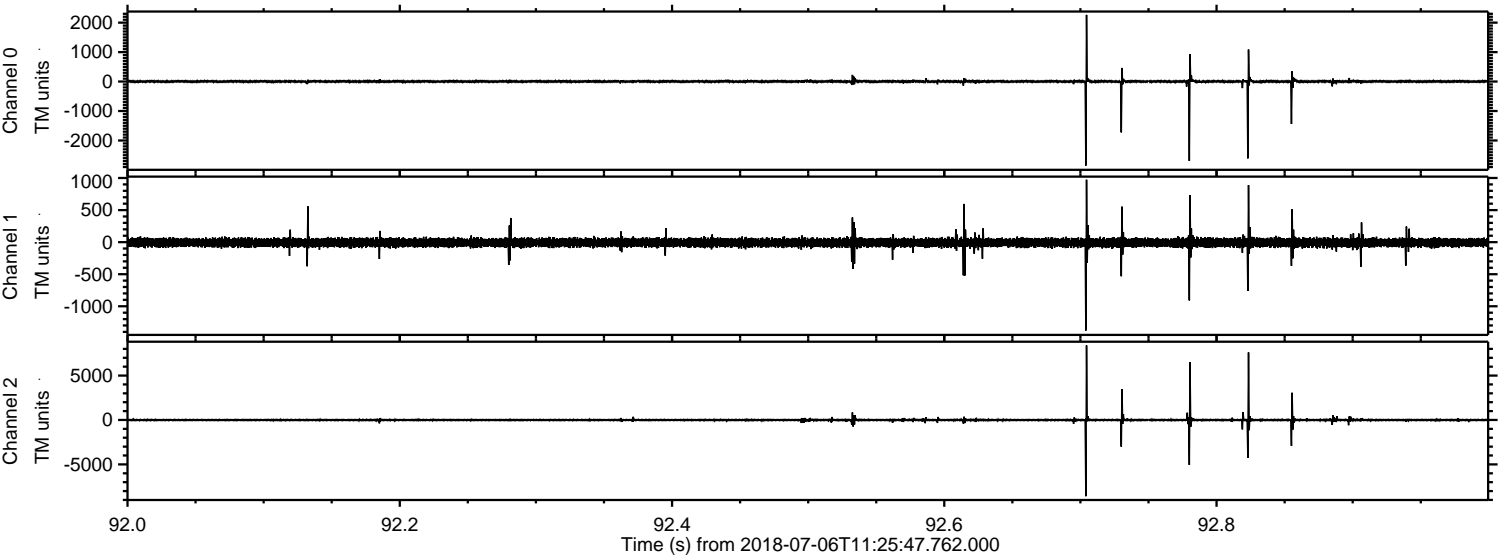


Processed Fri Jul 6 13:34:08 2018 by ELM ver.2012-10-06 from 001\_\_elm20180706\_112546\_\_dat00.bin





Processed Fri Jul 6 13:34:09 2018 by ELM ver.2012-10-06 from 001\_\_elm20180706\_112546\_\_dat00.bin



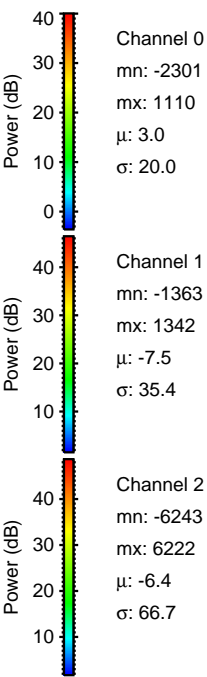
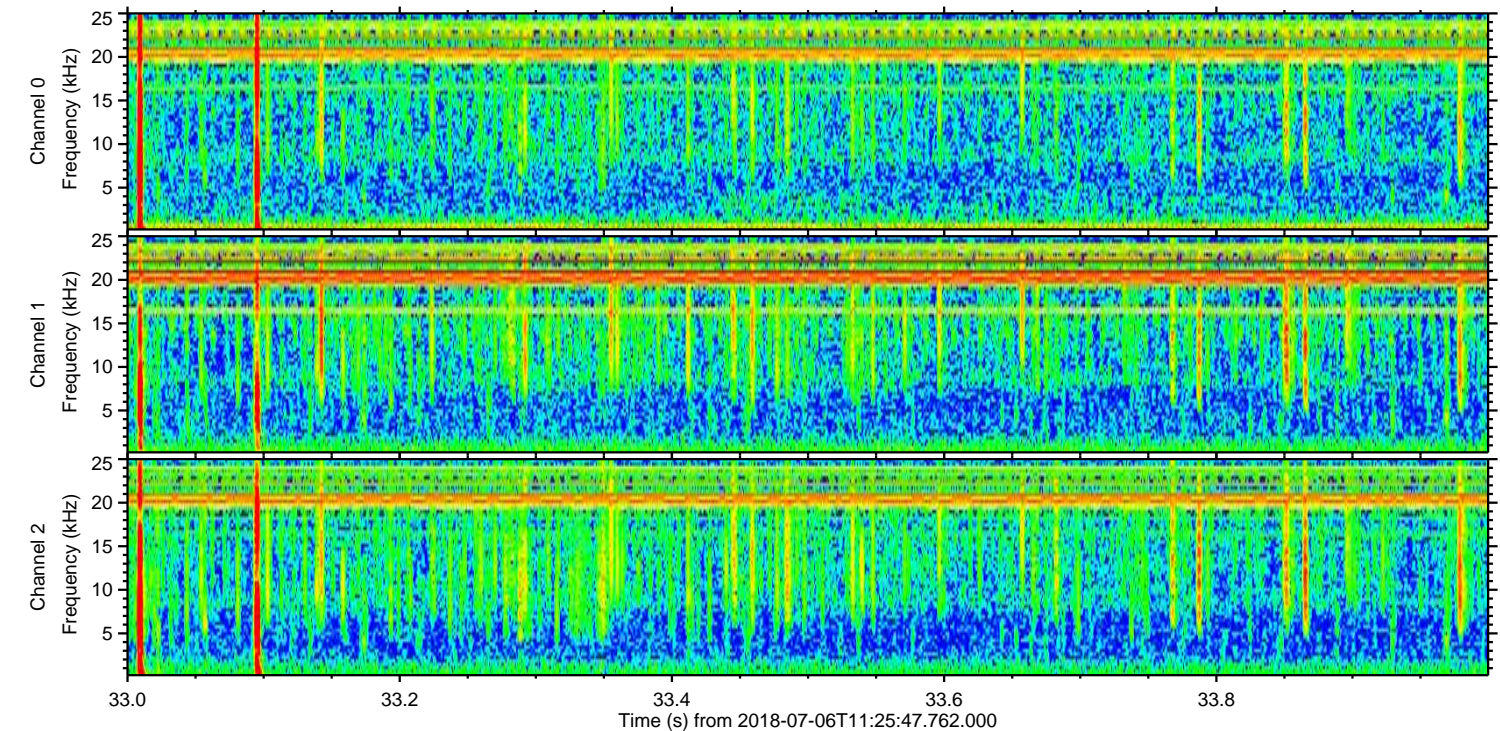
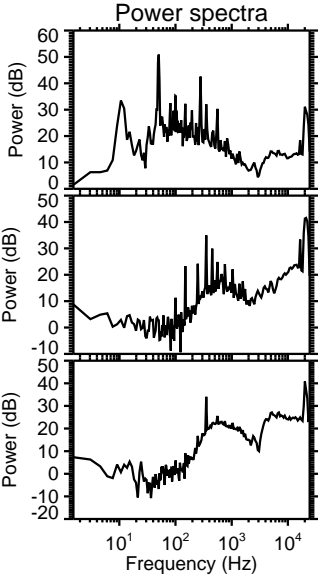
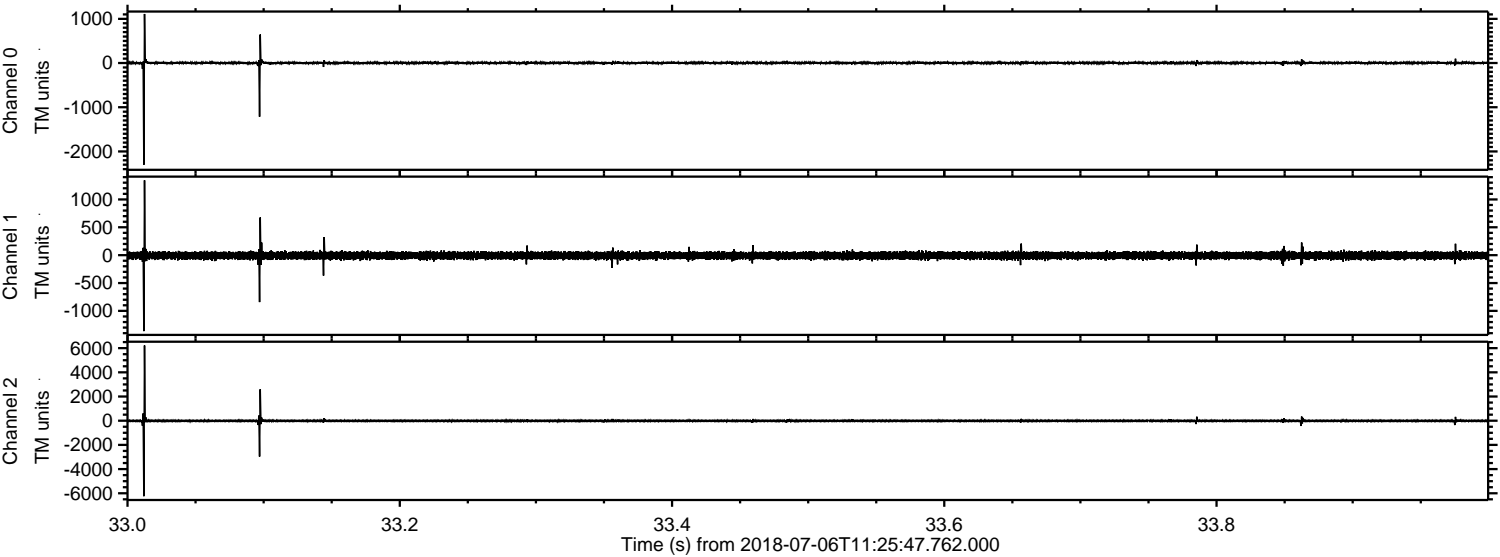
Channel 0  
mn: -2853  
mx: 2264  
 $\mu$ : 3.0  
 $\sigma$ : 35.4

Channel 1  
mn: -1378  
mx: 973  
 $\mu$ : -7.5  
 $\sigma$ : 38.6

Channel 2  
mn: -8579  
mx: 8391  
 $\mu$ : -6.4  
 $\sigma$ : 115.6

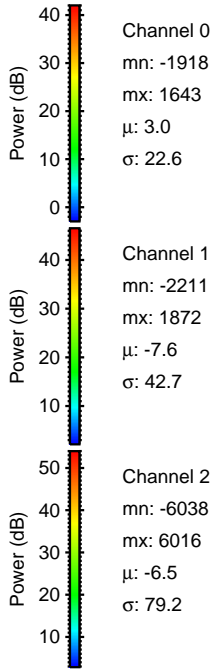
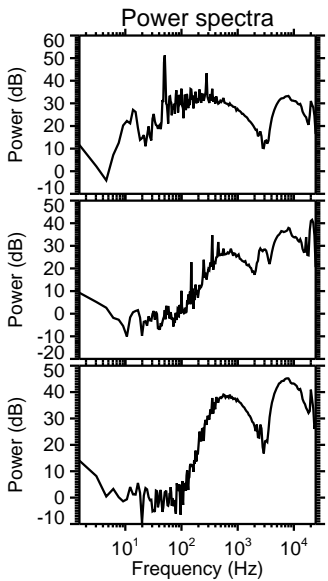
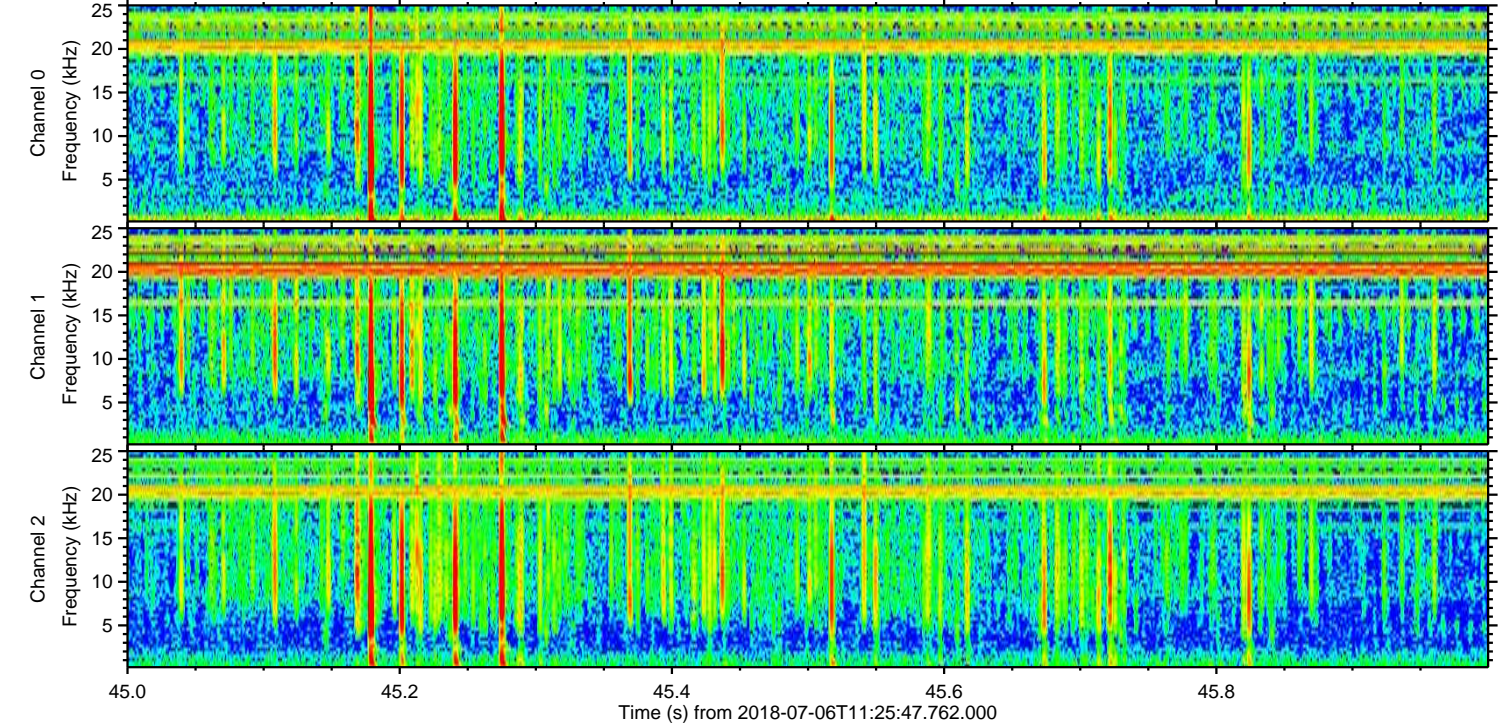
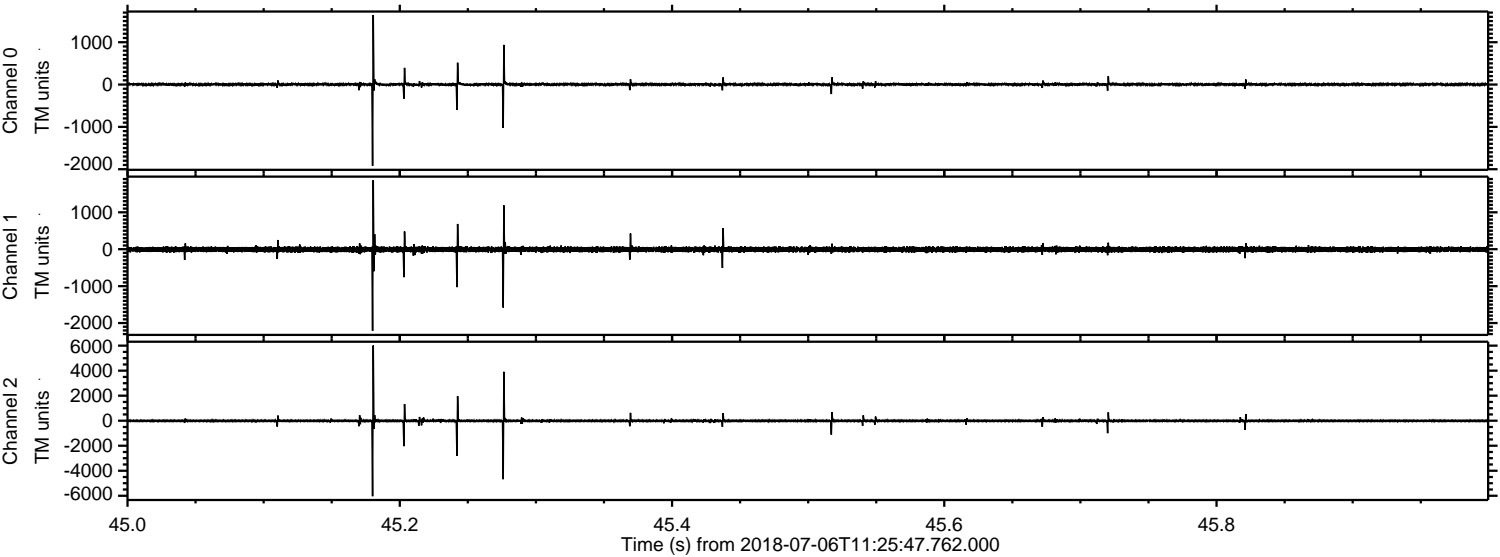


Processed Fri Jul 6 13:34:10 2018 by ELM ver.2012-10-06 from 001\_\_elm20180706\_112546\_\_dat00.bin



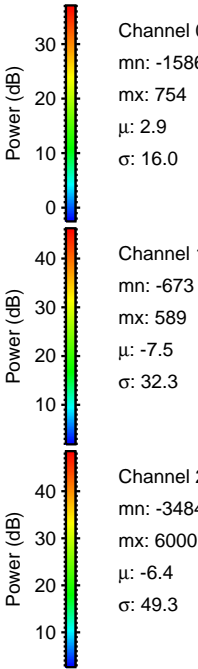
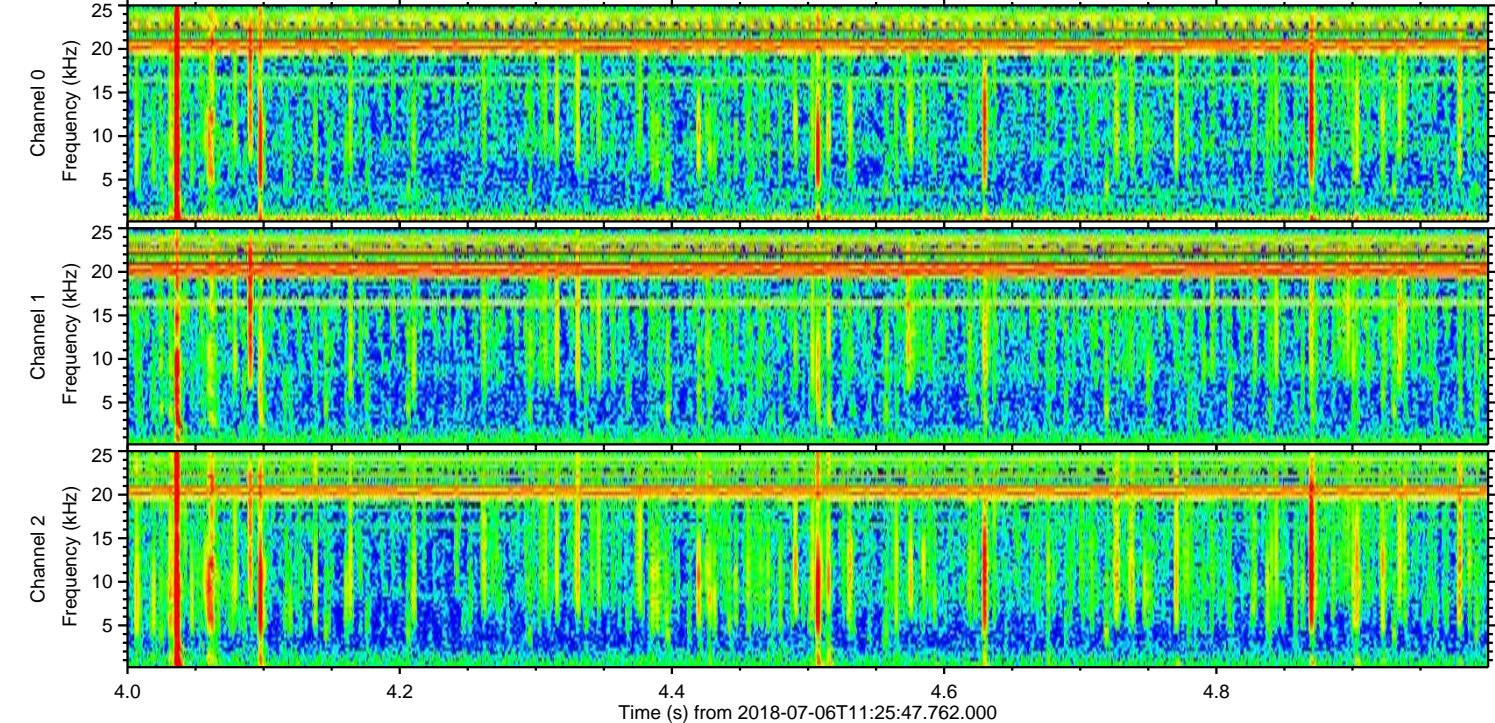
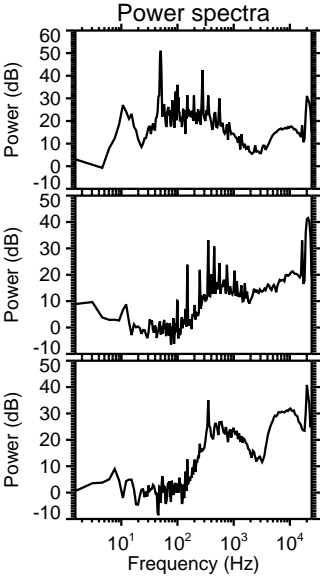
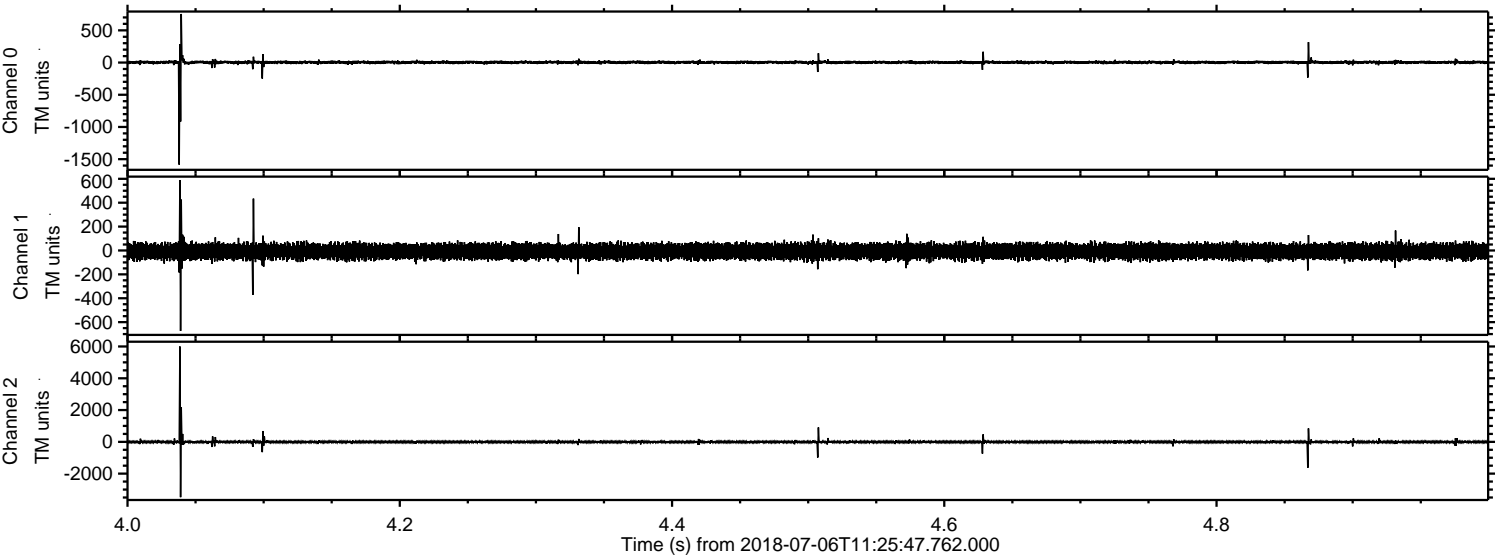


Processed Fri Jul 6 13:34:11 2018 by ELM ver.2012-10-06 from 001\_\_elm20180706\_112546\_\_dat00.bin



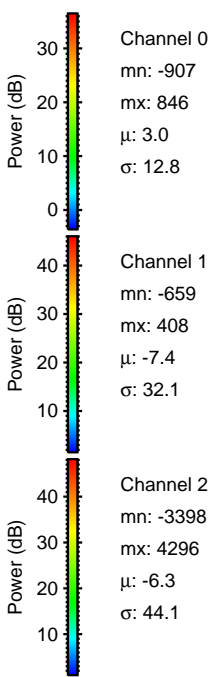
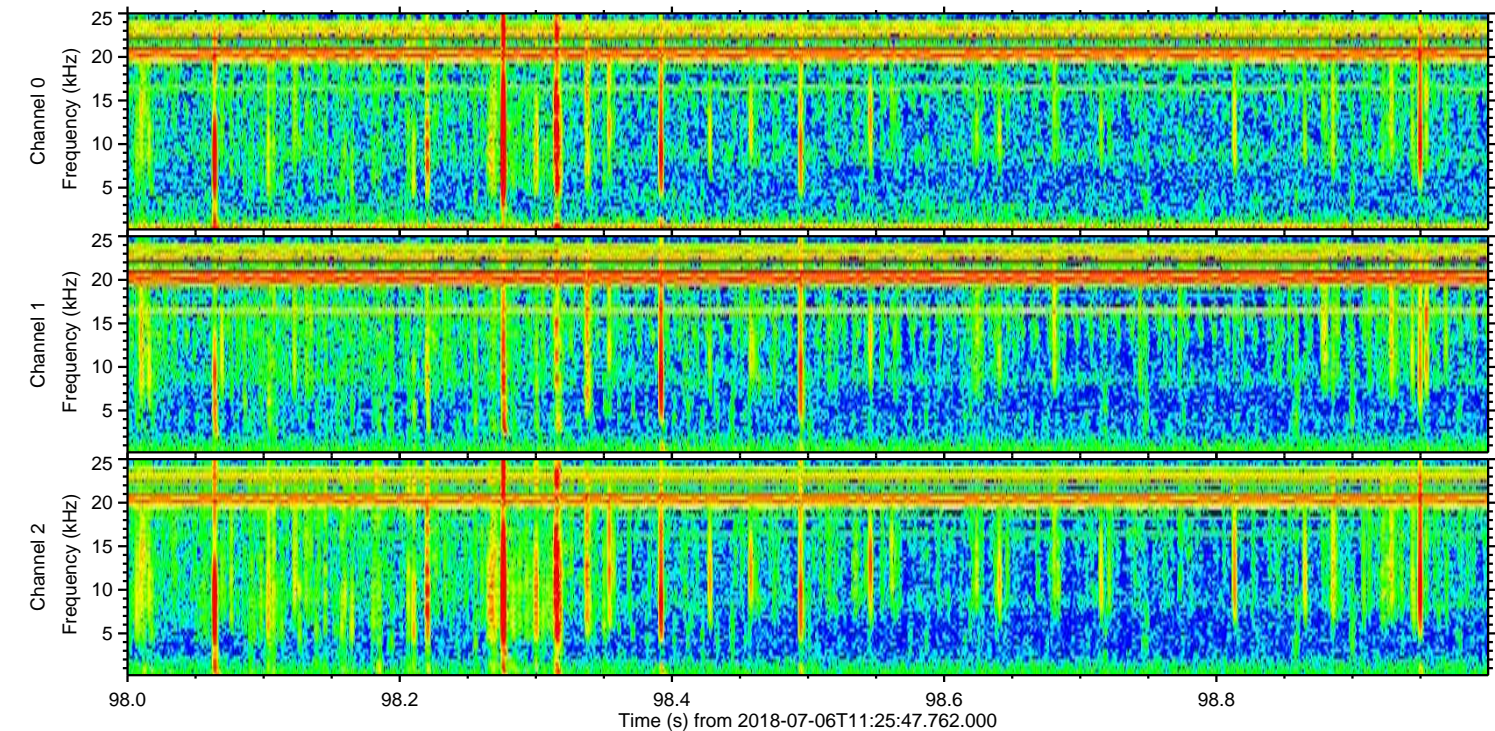
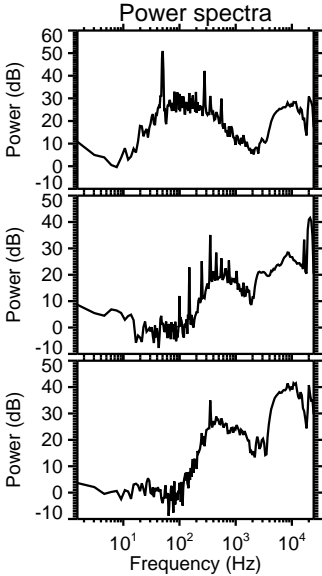
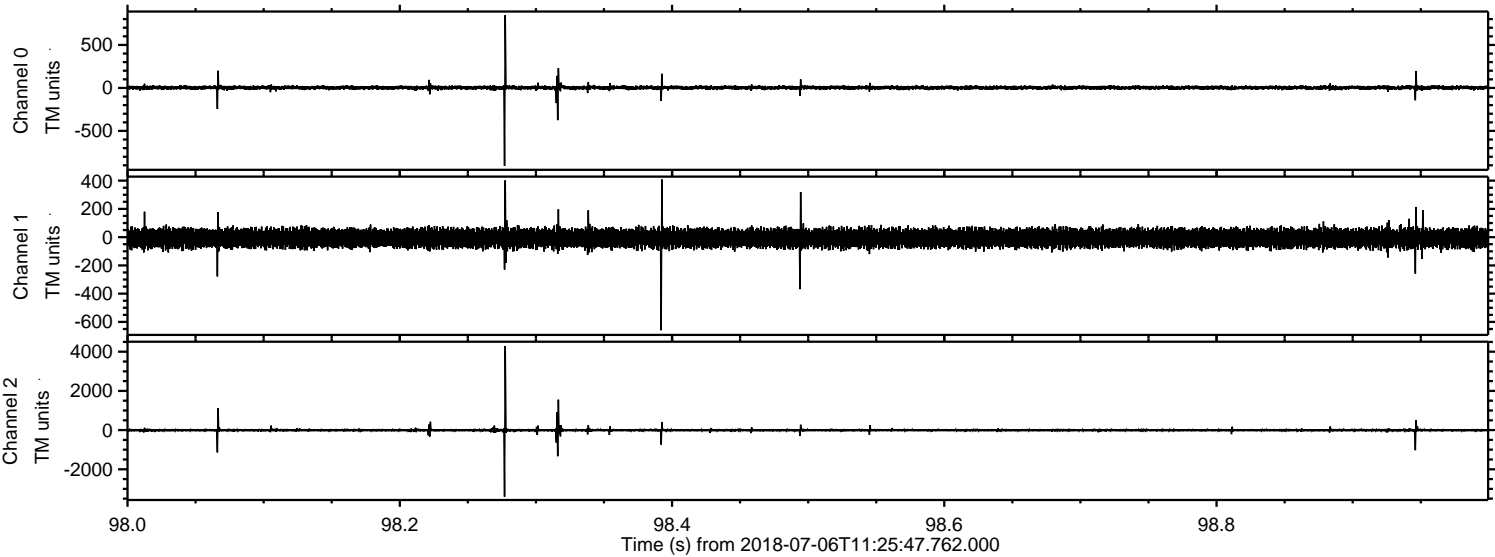


Processed Fri Jul 6 13:34:12 2018 by ELM ver.2012-10-06 from 001\_\_elm20180706\_112546\_\_dat00.bin



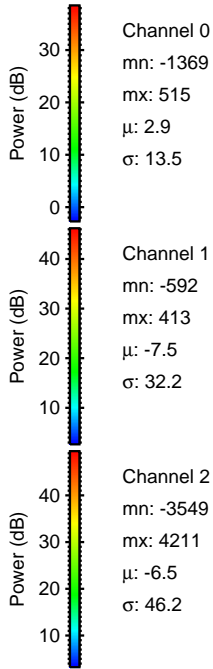
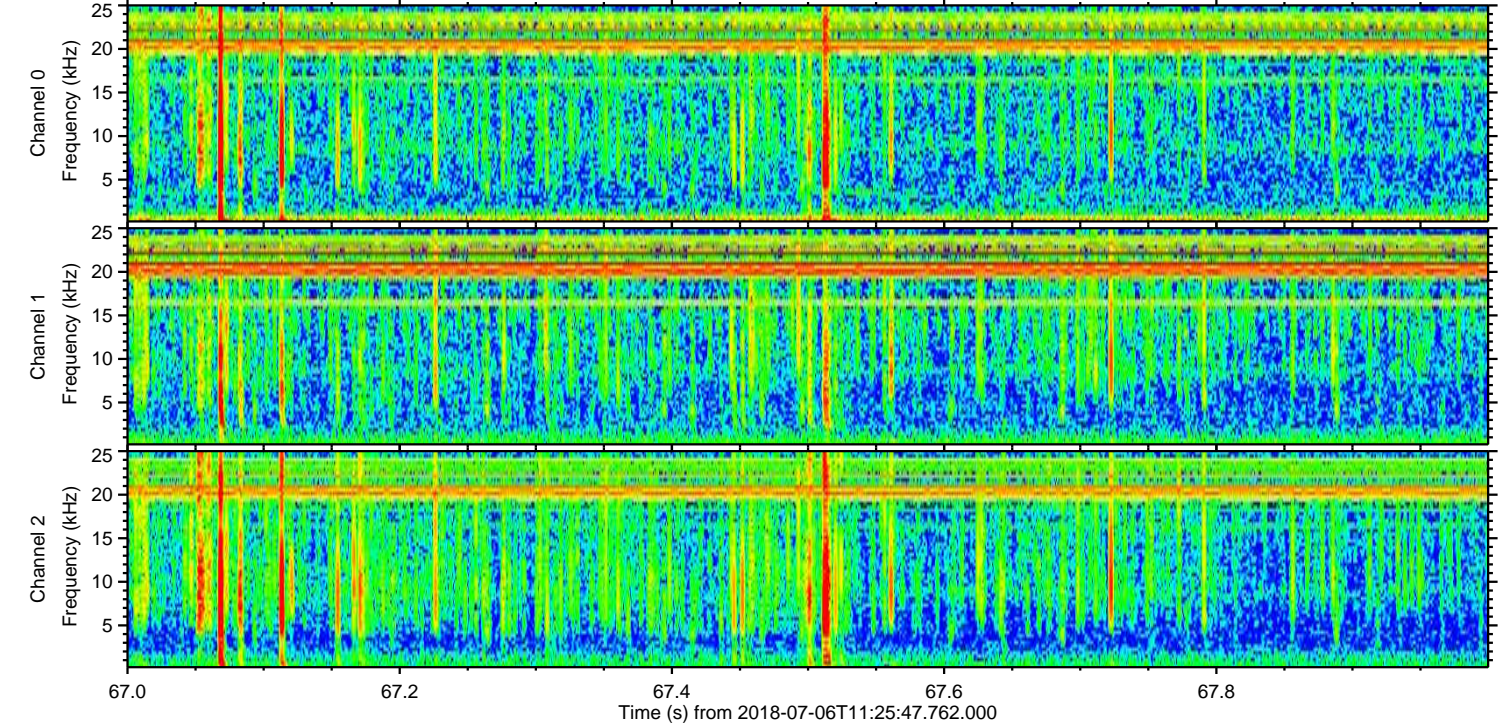
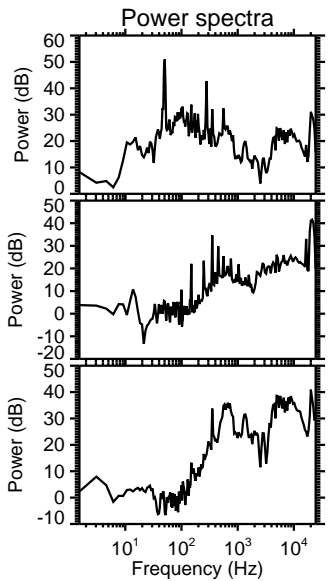
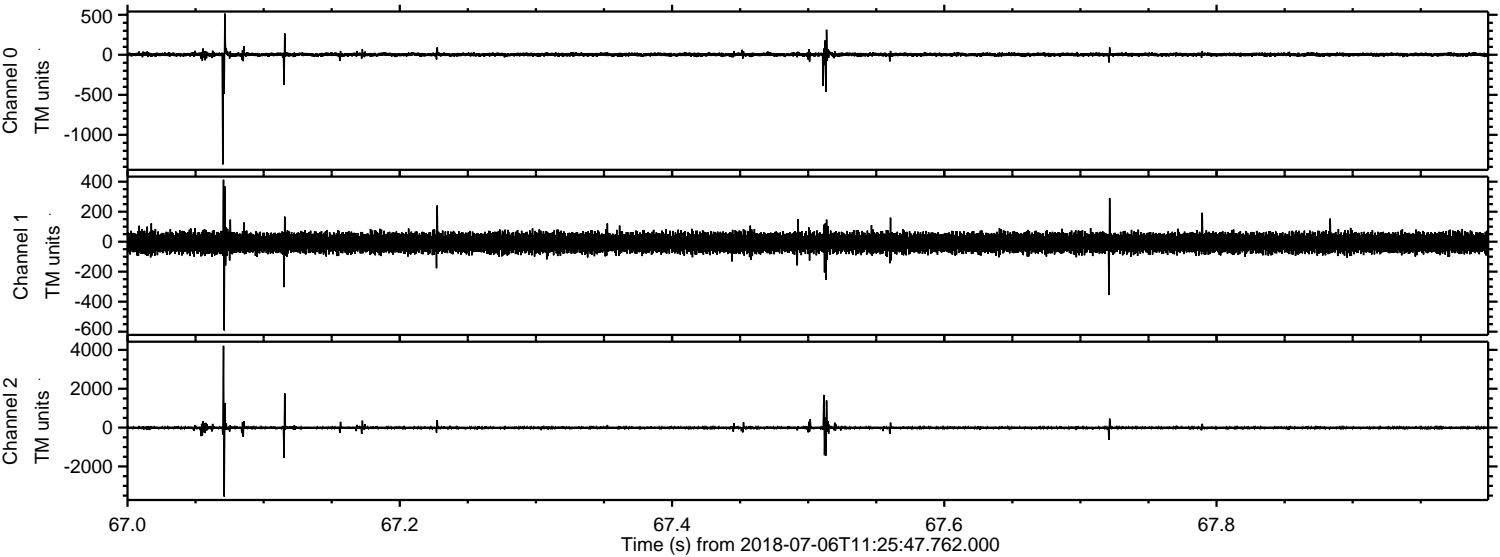


Processed Fri Jul 6 13:34:13 2018 by ELM ver.2012-10-06 from 001\_\_elm20180706\_112546\_\_dat00.bin





Processed Fri Jul 6 13:34:14 2018 by ELM ver.2012-10-06 from 001\_\_elm20180706\_112546\_\_dat00.bin



Channel 0  
mn: -1369  
mx: 515  
 $\mu$ : 2.9  
 $\sigma$ : 13.5

Channel 1  
mn: -592  
mx: 413  
 $\mu$ : -7.5  
 $\sigma$ : 32.2

Channel 2  
mn: -3549  
mx: 4211  
 $\mu$ : -6.5  
 $\sigma$ : 46.2



