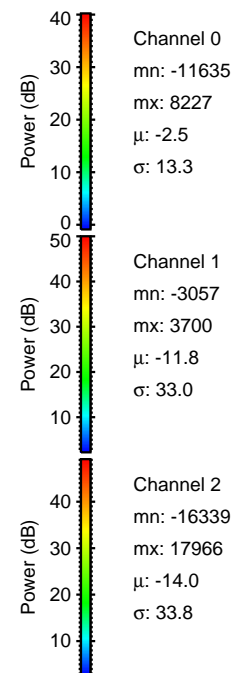
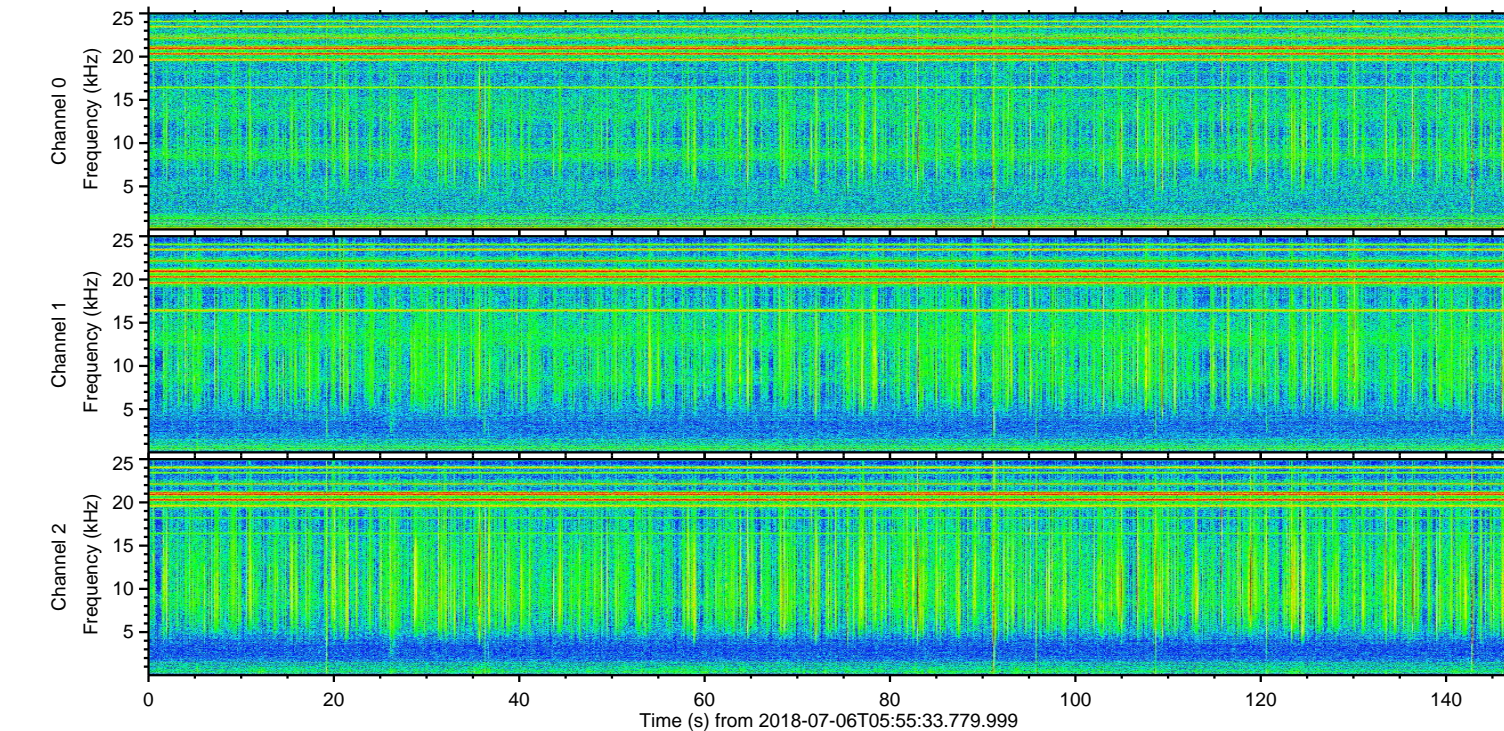
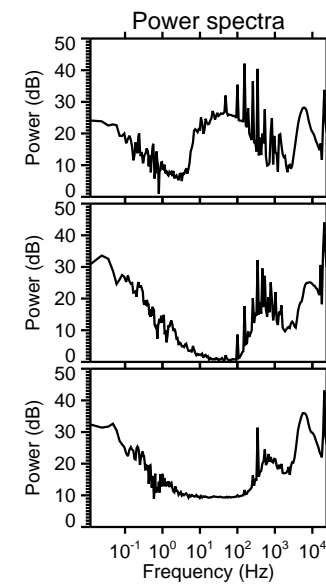
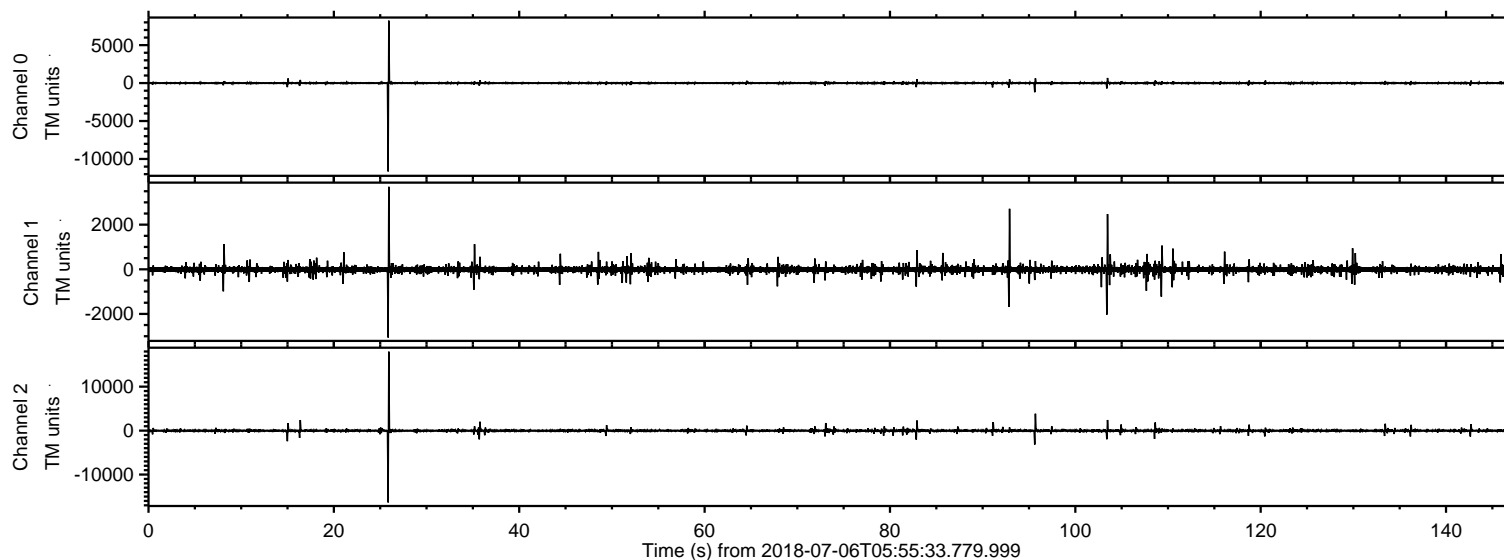
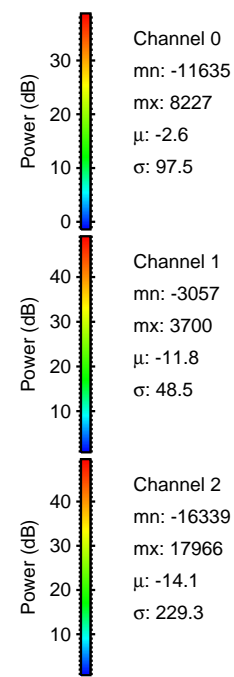
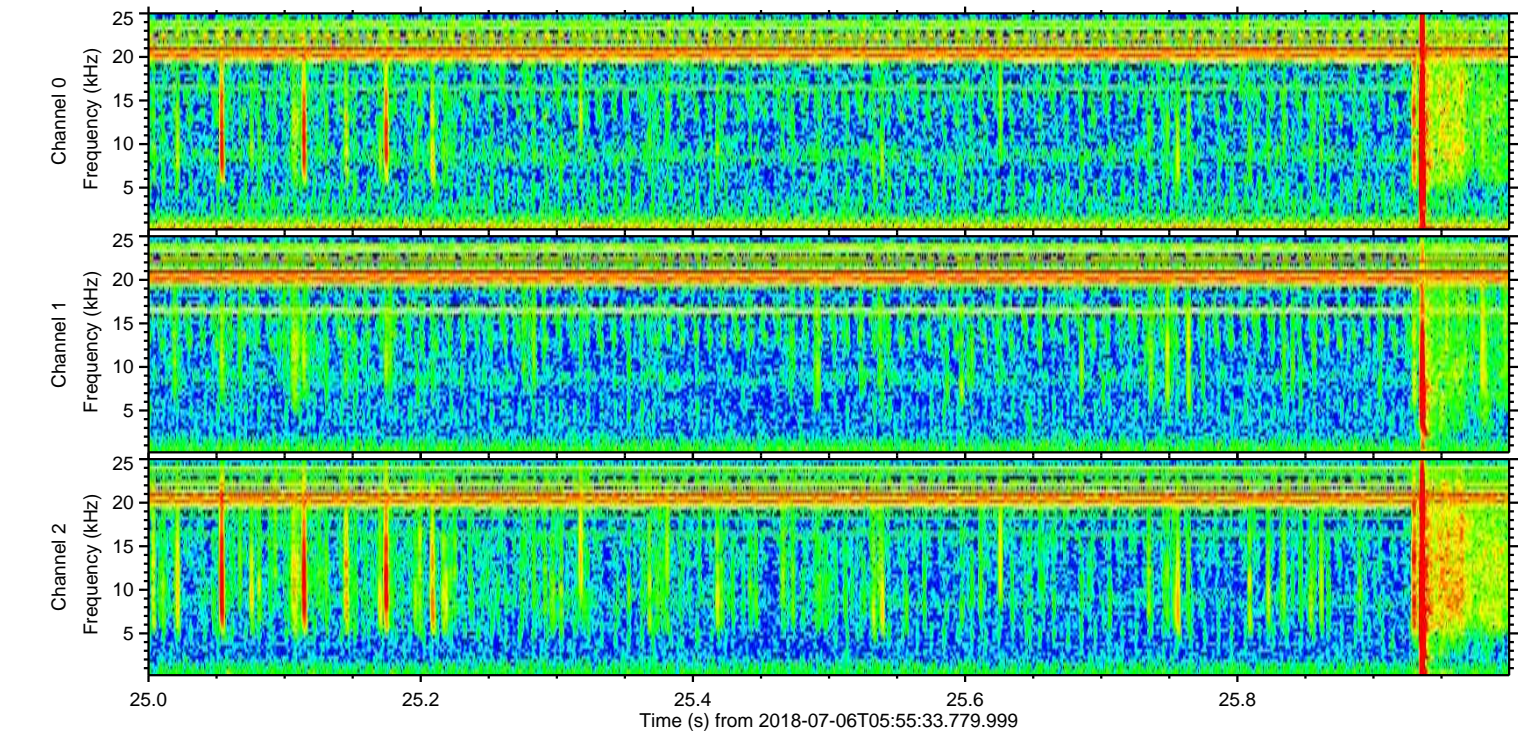
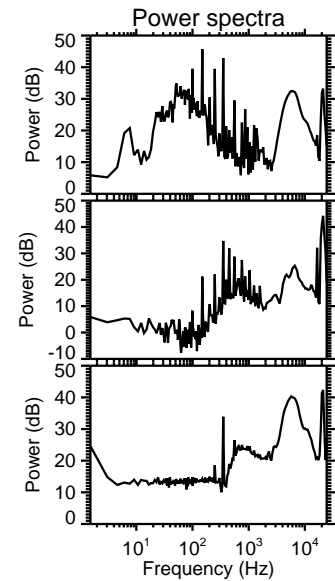
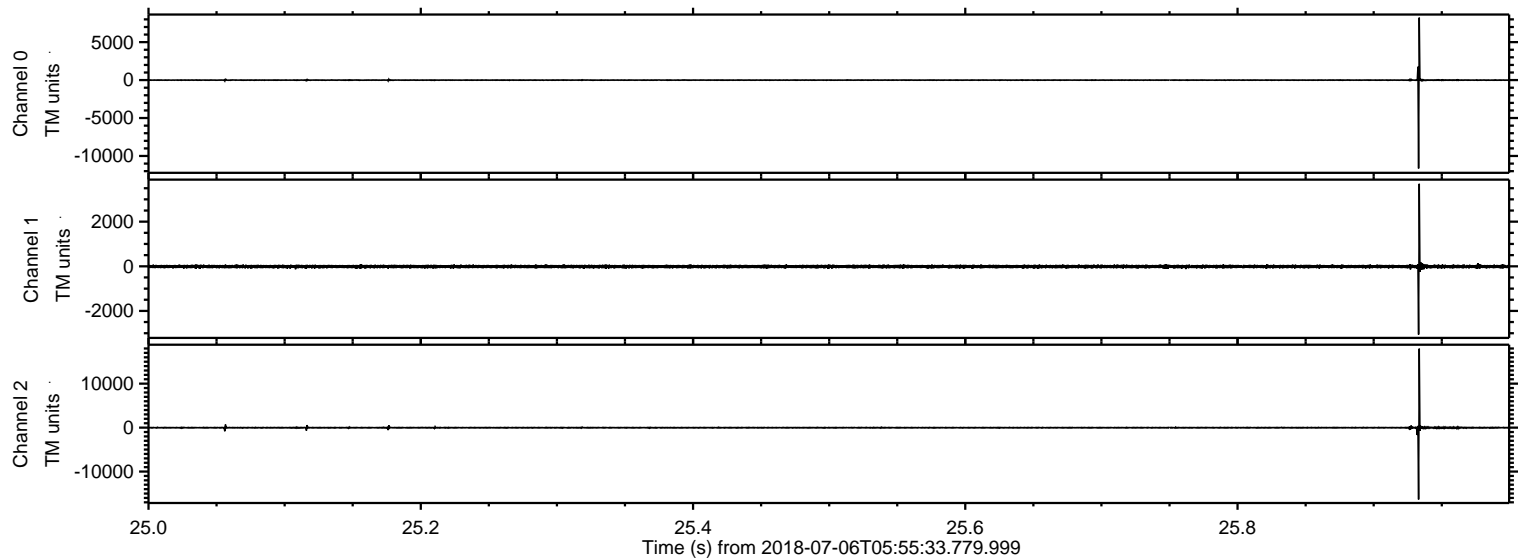


ELMAVAN 3D WAVEFORMS (Measured data sampled at 50 kHz) 51000 packets of 144 samples from 2018-07-06T05:55:33.779.999.

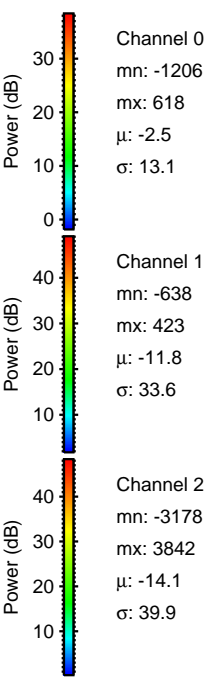
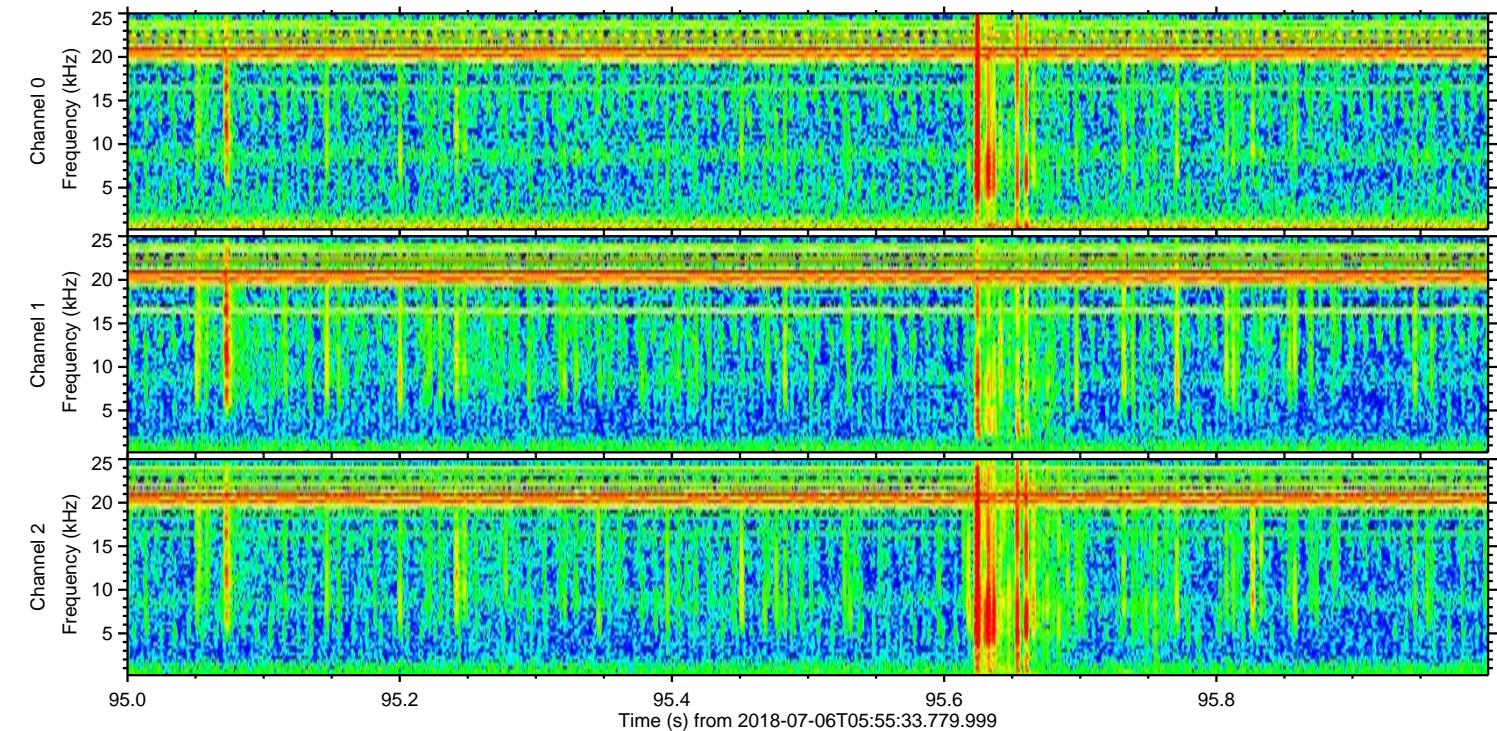
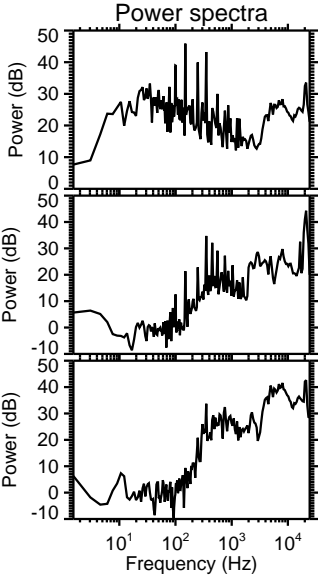
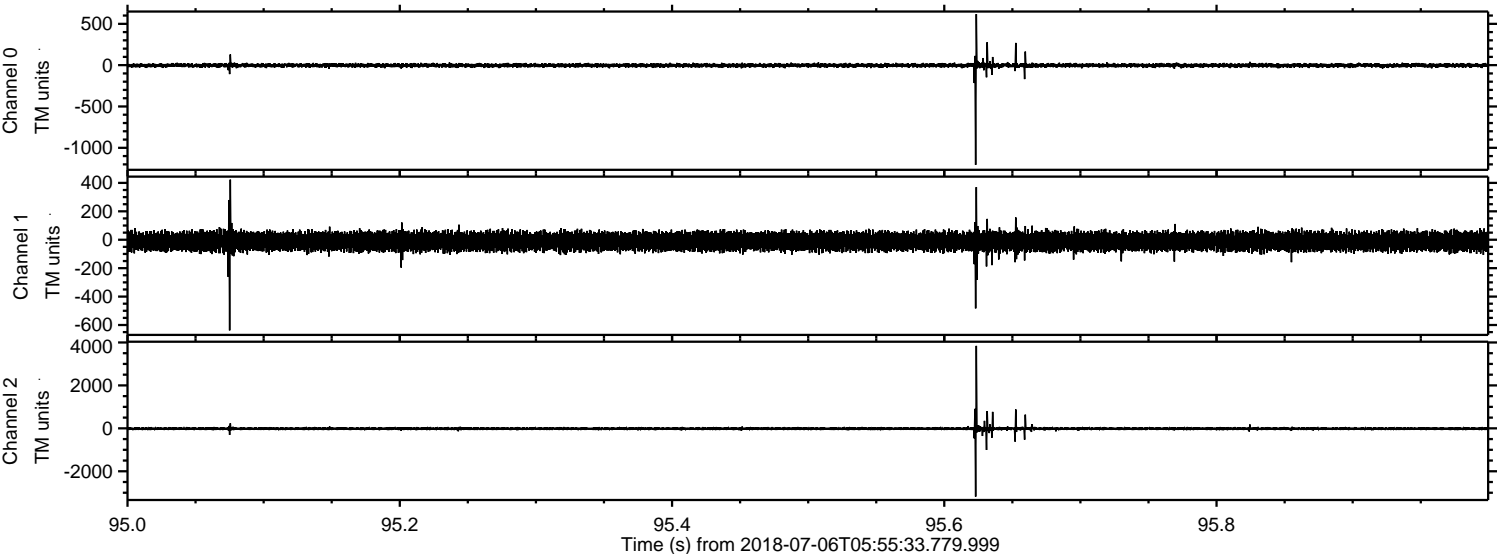
Processed Fri Jul 6 08:03:11 2018 by ELM ver.2012-10-06 from 001__elm20180706_055532__dat00.bin



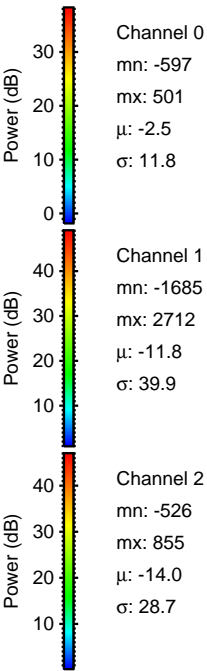
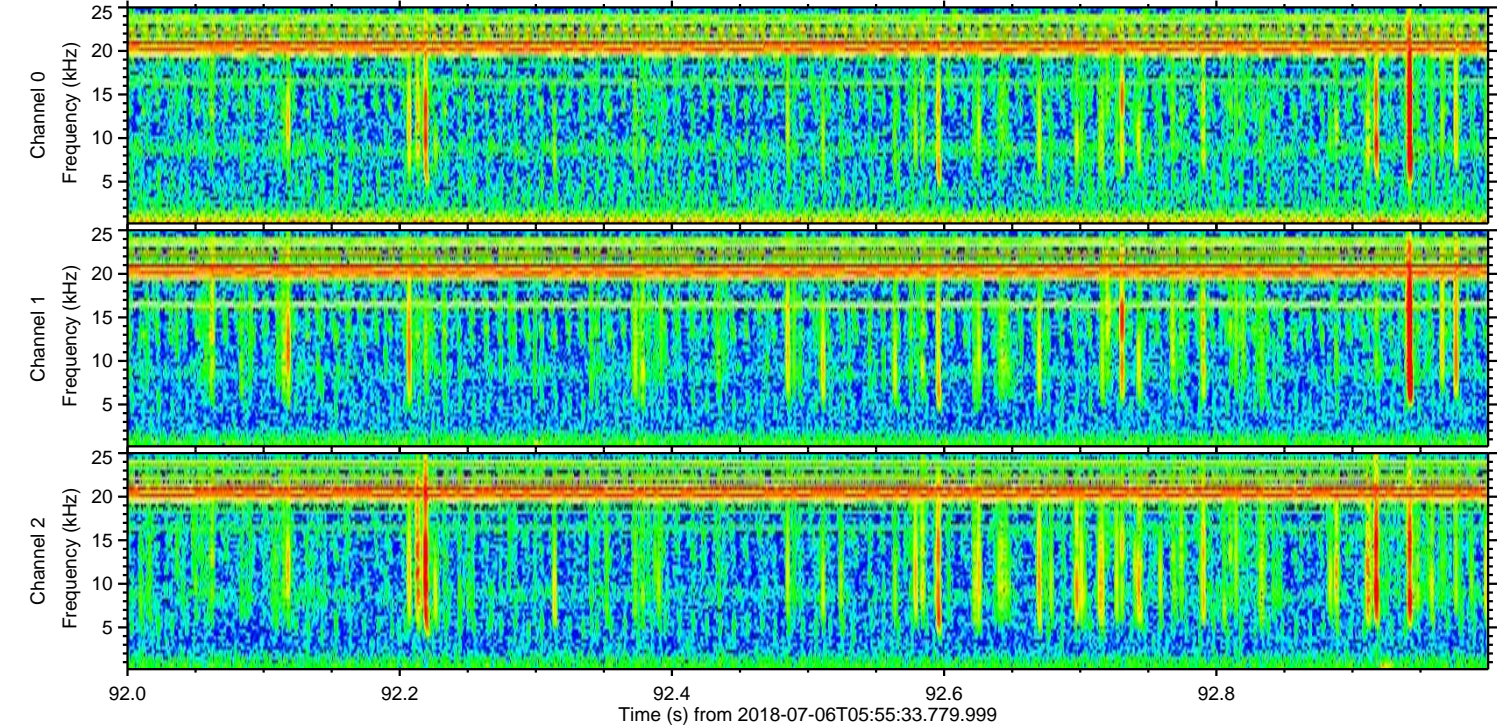
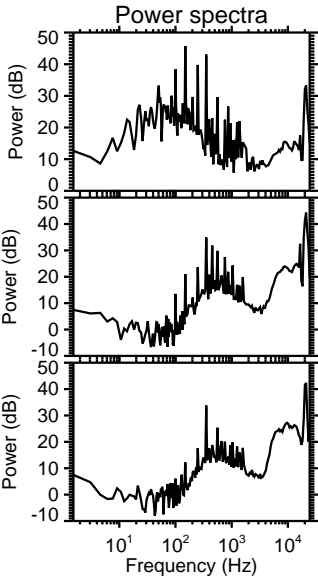
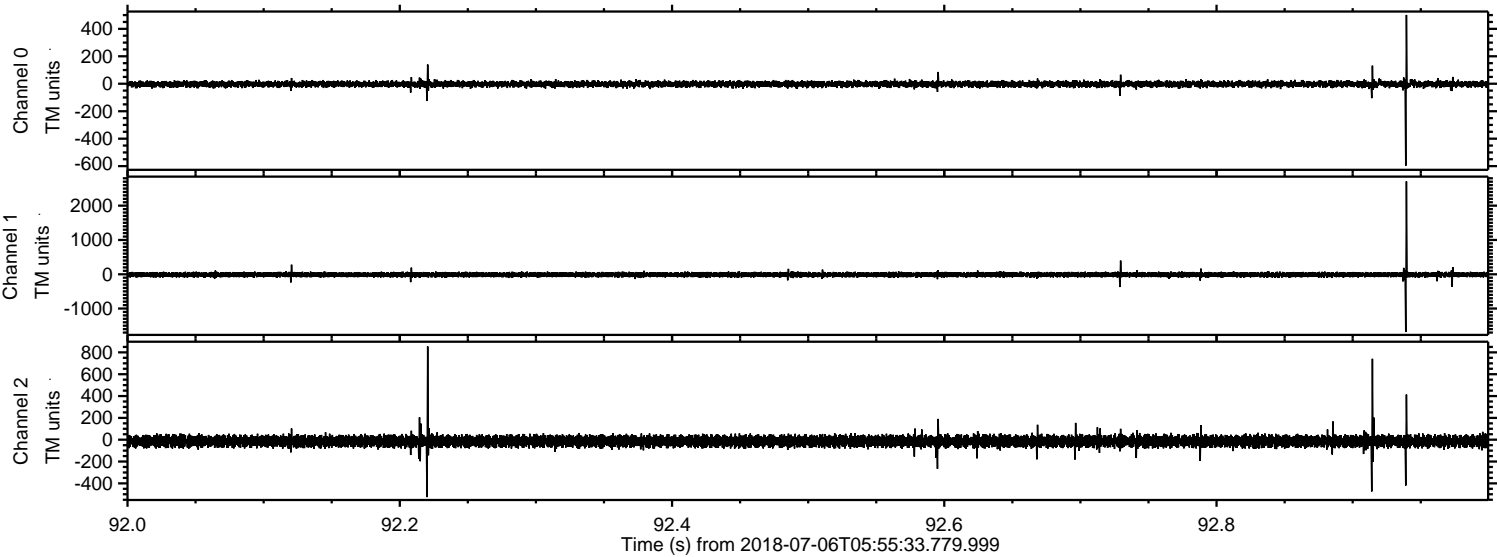
Processed Fri Jul 6 08:03:17 2018 by ELM ver.2012-10-06 from 001__elm20180706_055532__dat00.bin



Processed Fri Jul 6 08:03:18 2018 by ELM ver.2012-10-06 from 001__elm20180706_055532__dat00.bin

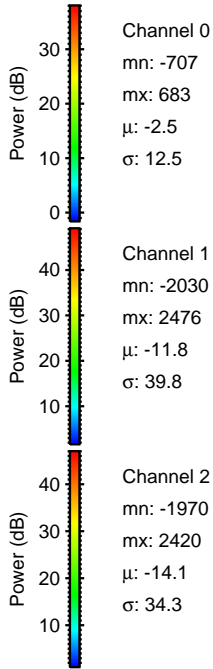
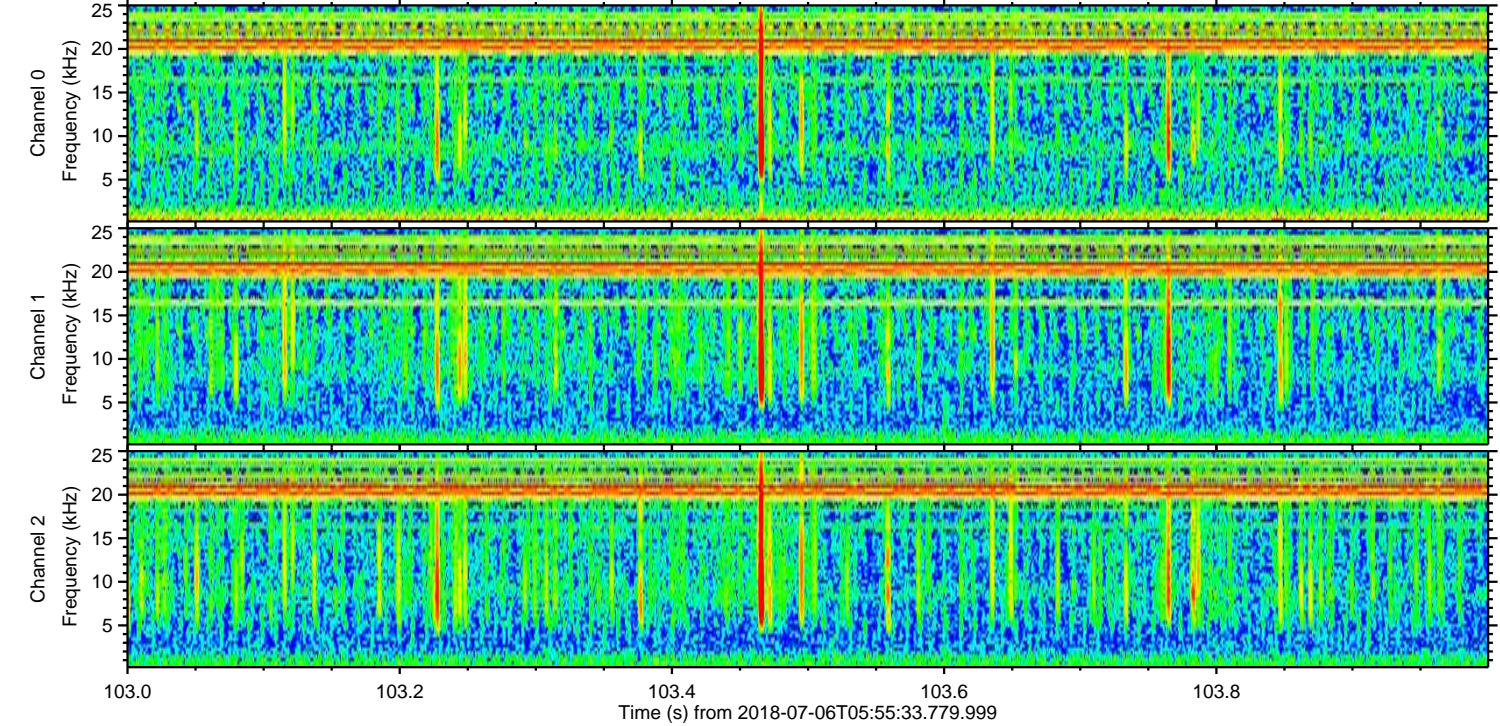
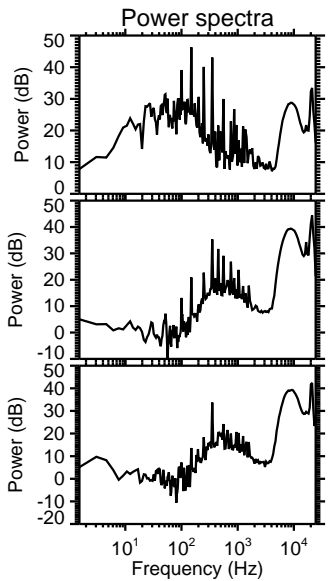
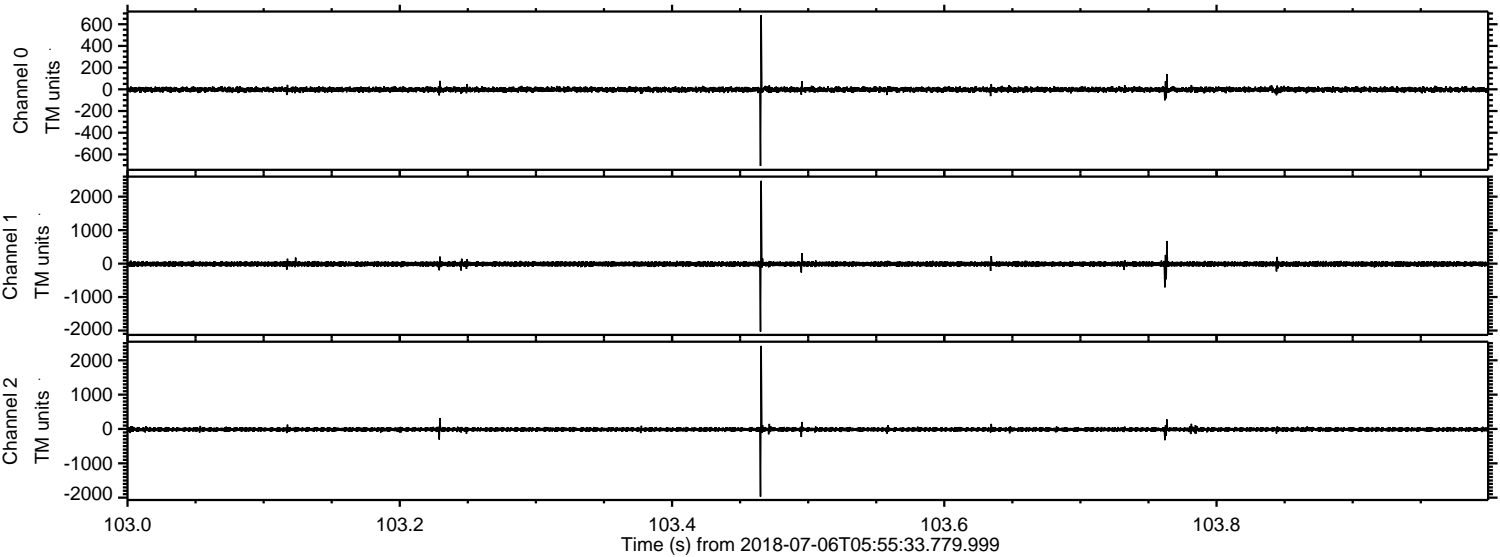


Processed Fri Jul 6 08:03:19 2018 by ELM ver.2012-10-06 from 001__elm20180706_055532__dat00.bin



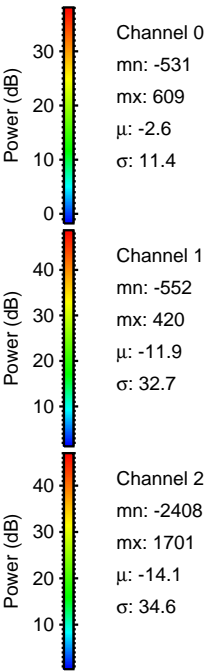
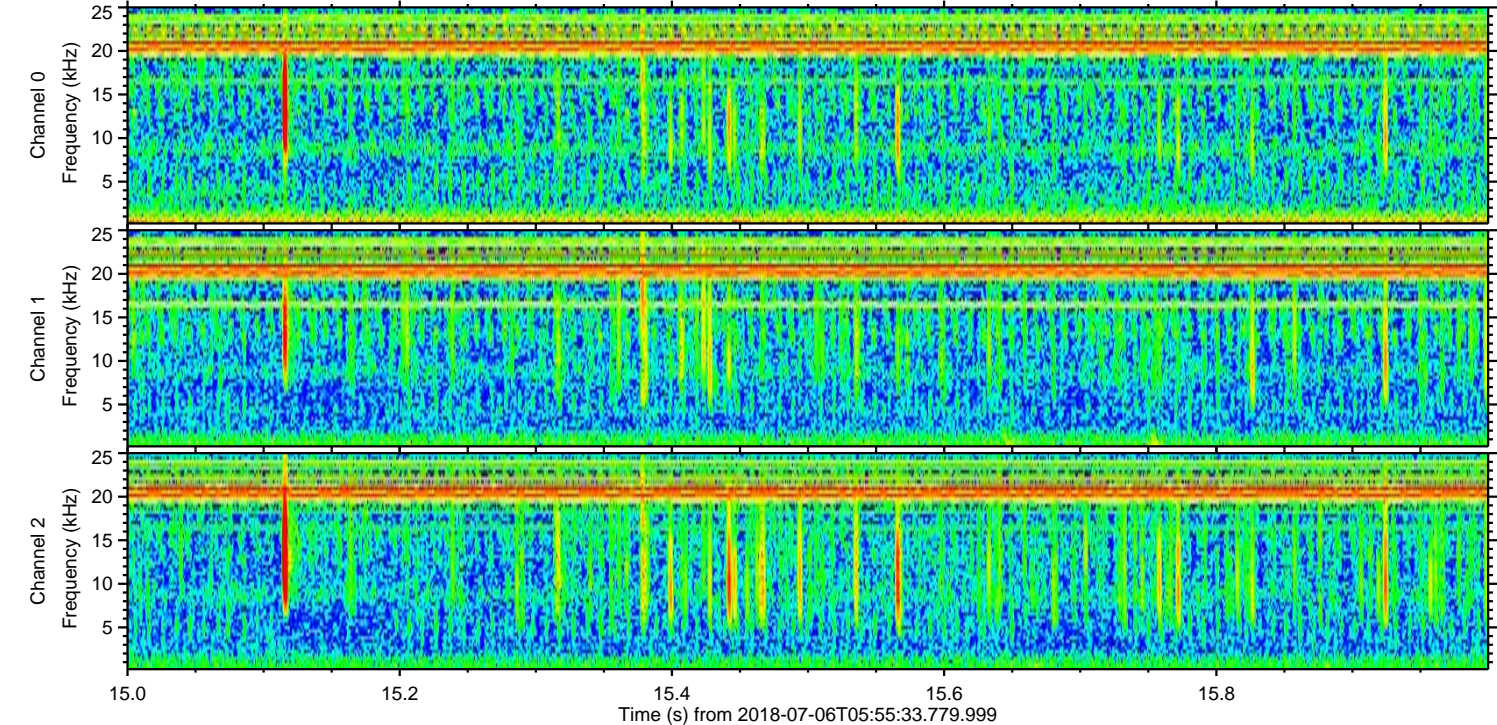
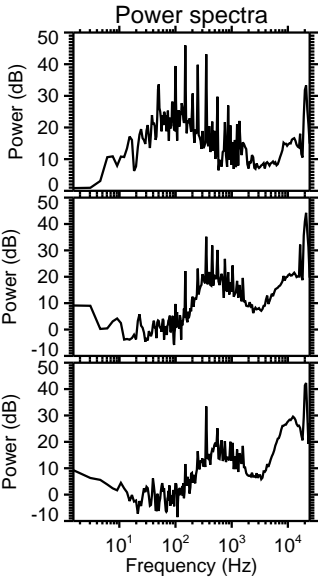
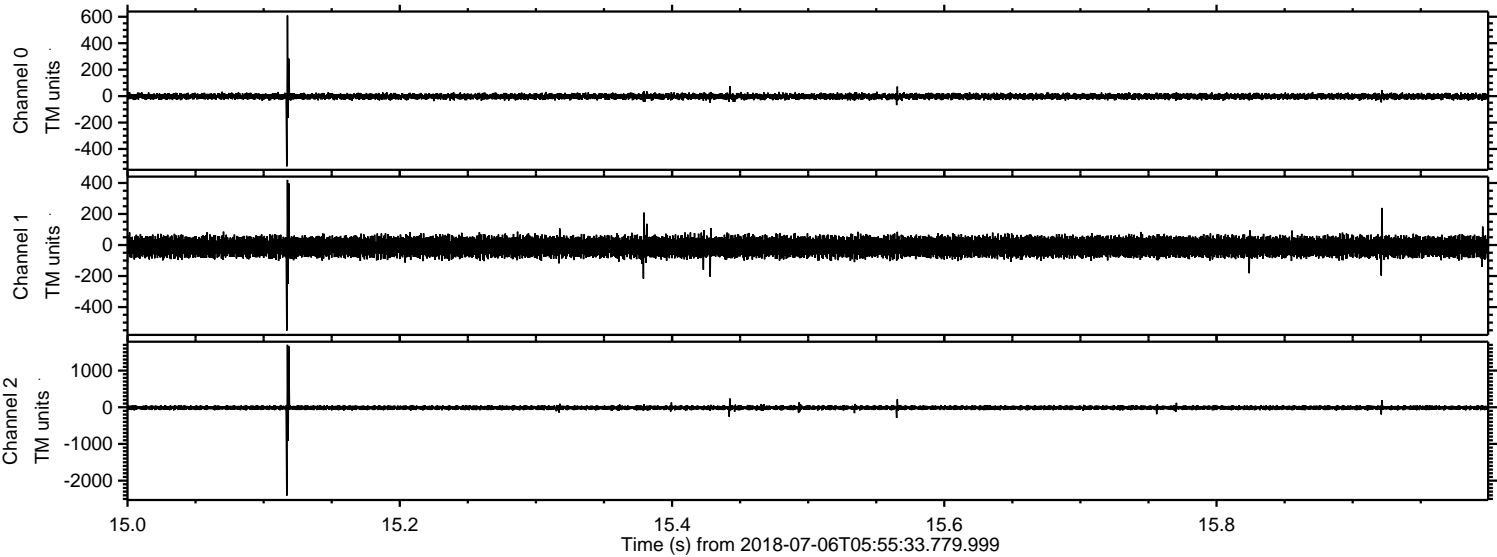
ELMAVAN 3D WAVEFORMS (Measured data sampled at 50 kHz) 51000 packets of 144 samples from 2018-07-06T05:55:33.779.999. Part 104/147

Processed Fri Jul 6 08:03:20 2018 by ELM ver.2012-10-06 from 001__elm20180706_055532__dat00.bin



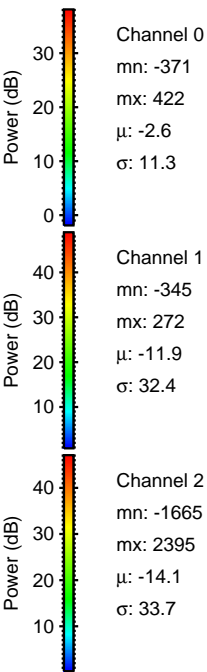
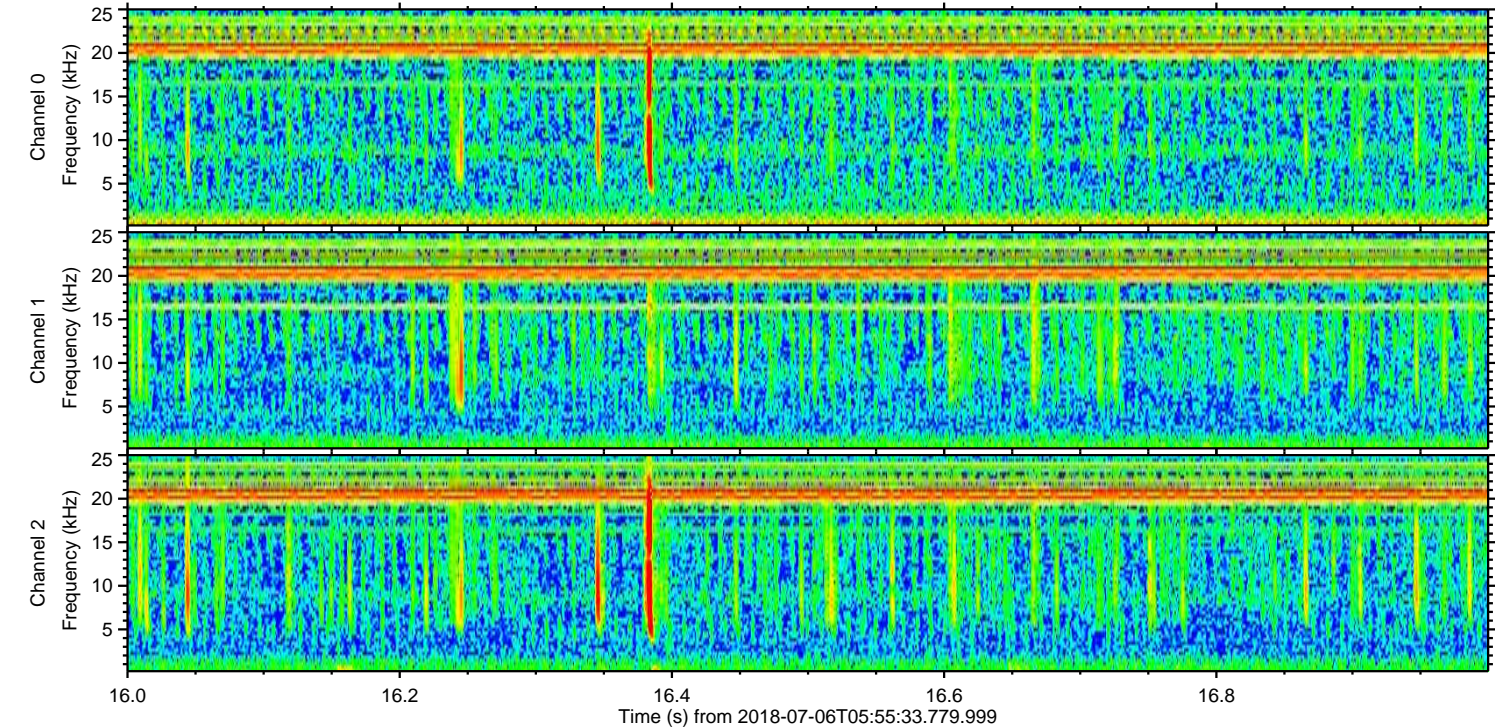
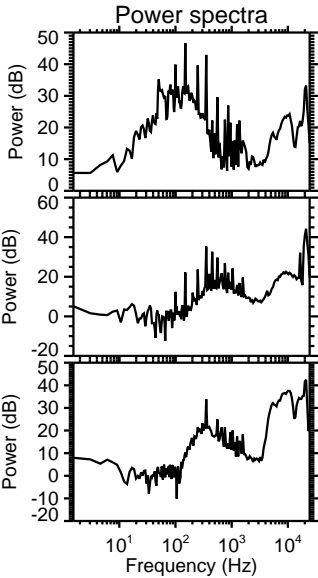
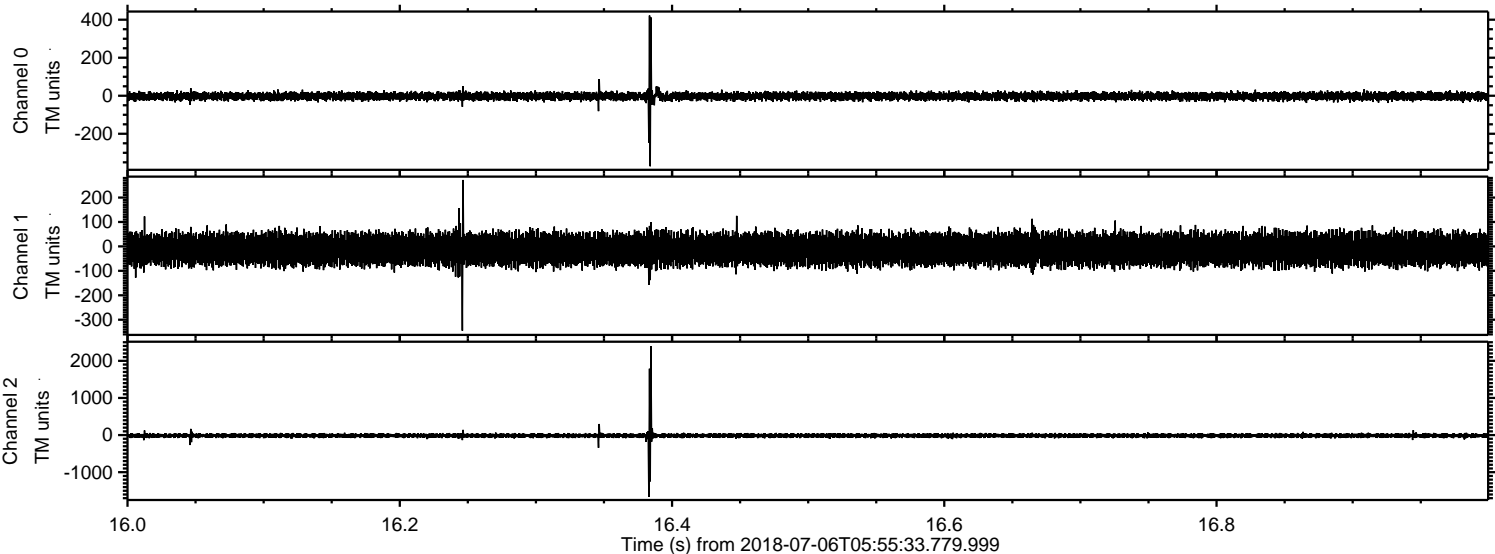
ELMAVAN 3D WAVEFORMS (Measured data sampled at 50 kHz) 51000 packets of 144 samples from 2018-07-06T05:55:33.779.999. Part 16/147

Processed Fri Jul 6 08:03:20 2018 by ELM ver.2012-10-06 from 001__elm20180706_055532__dat00.bin

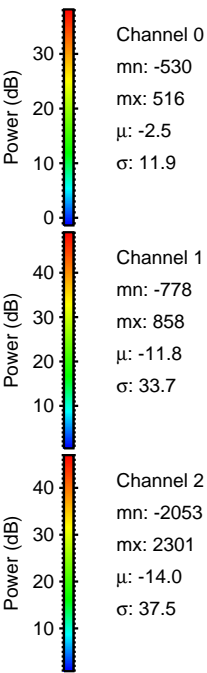
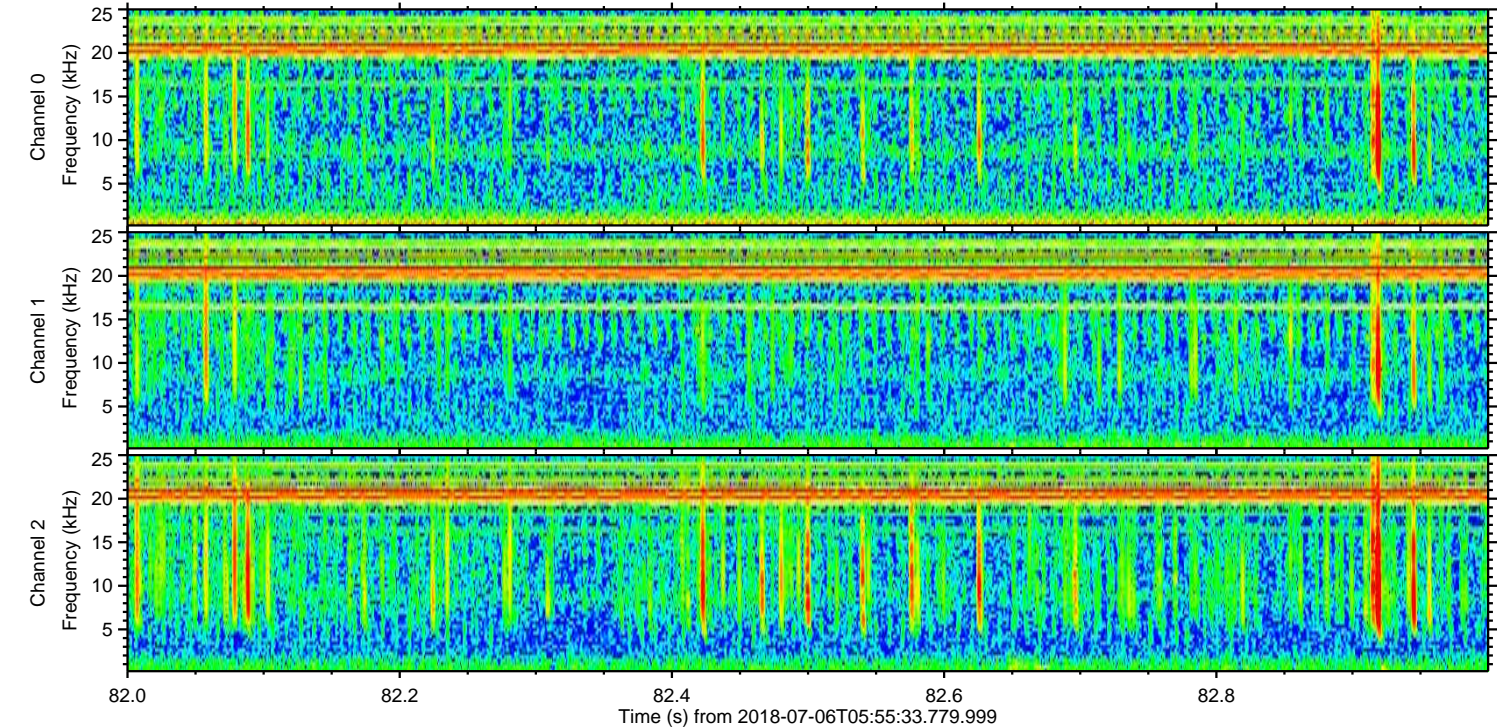
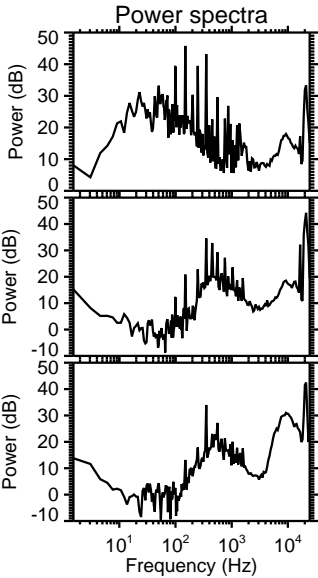
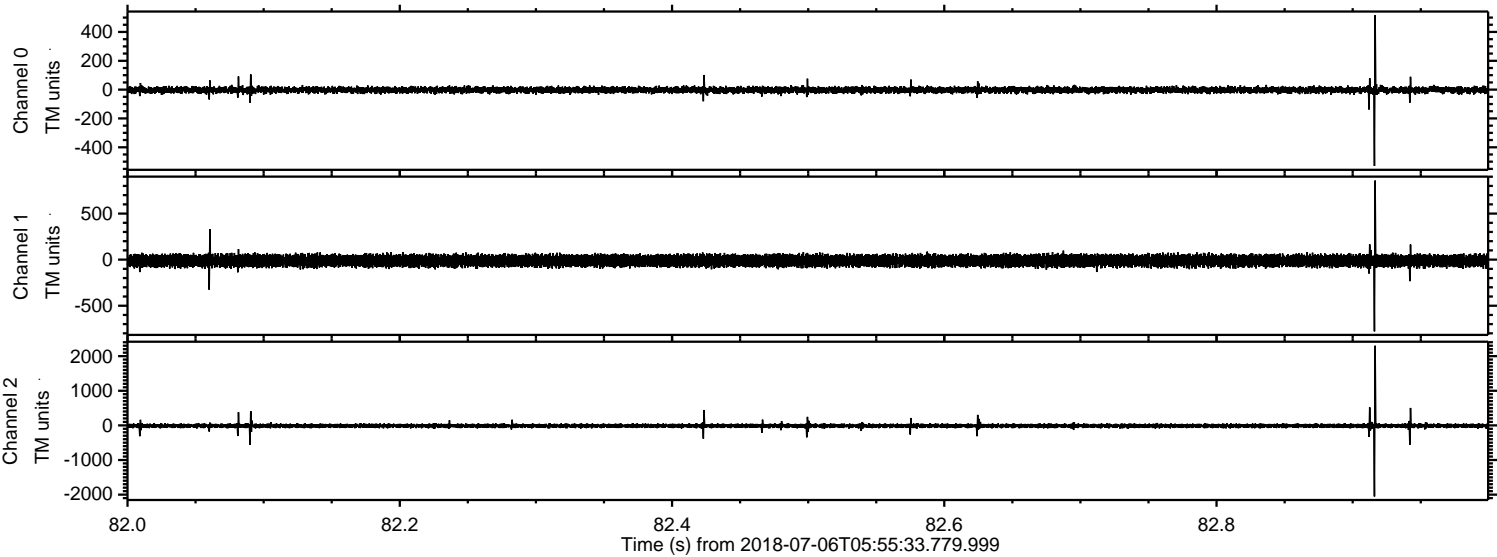


ELMAVAN 3D WAVEFORMS (Measured data sampled at 50 kHz) 51000 packets of 144 samples from 2018-07-06T05:55:33.779.999. Part 17/147

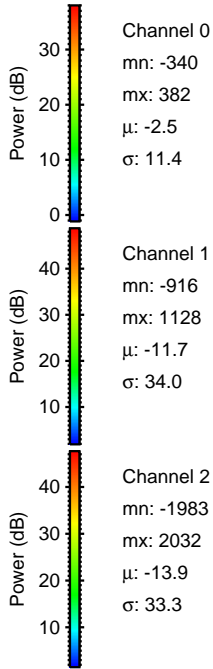
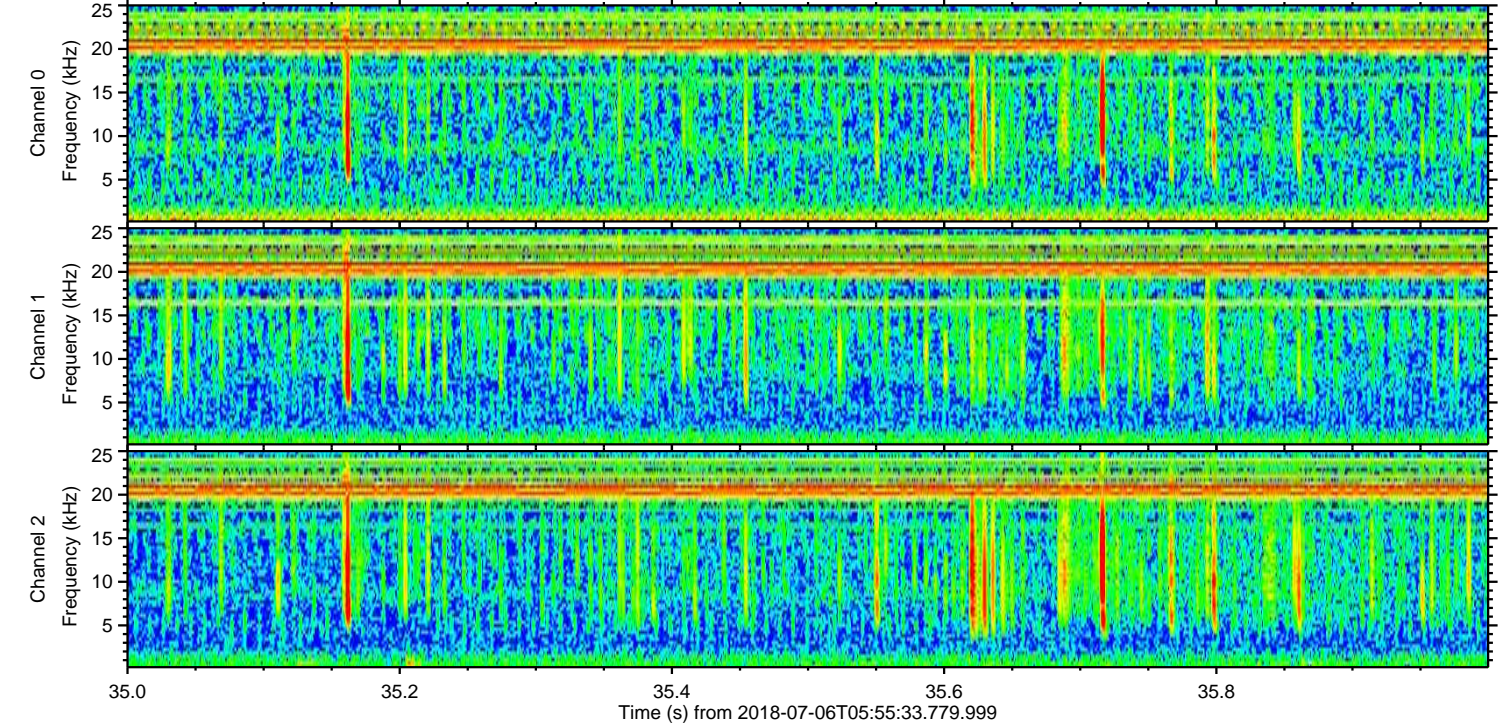
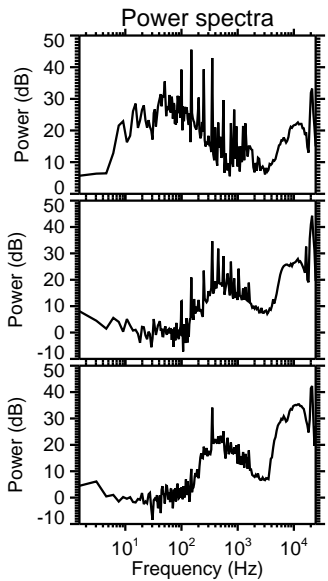
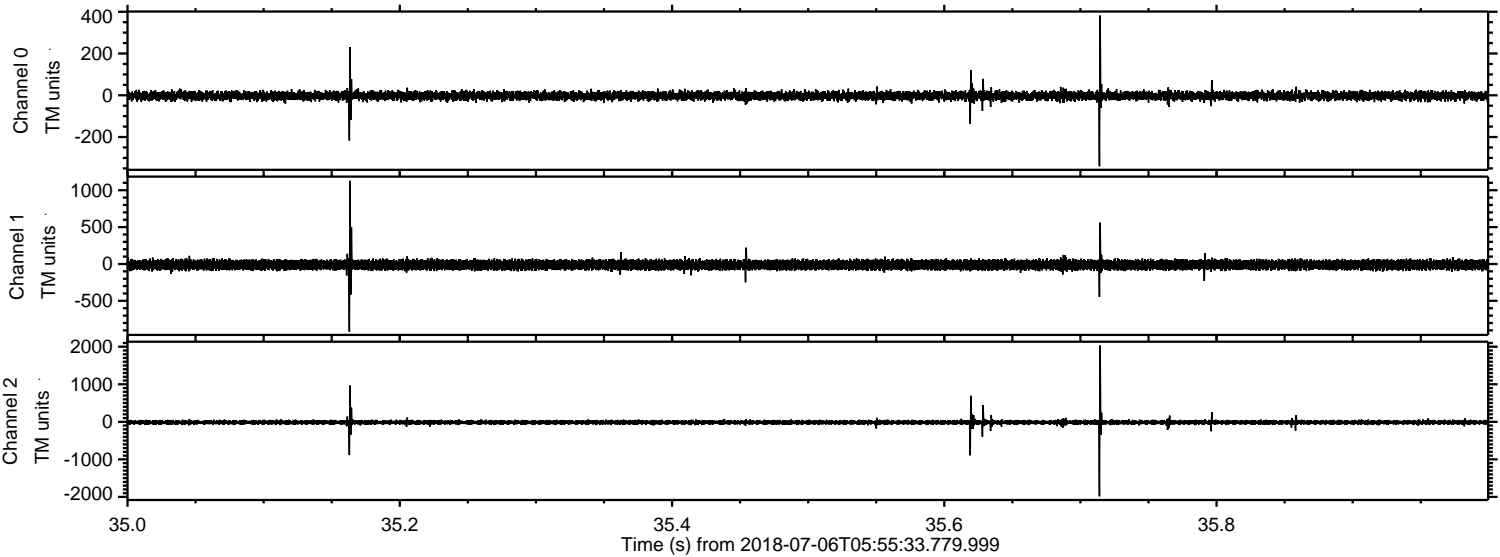
Processed Fri Jul 6 08:03:21 2018 by ELM ver.2012-10-06 from 001__elm20180706_055532__dat00.bin



Processed Fri Jul 6 08:03:22 2018 by ELM ver.2012-10-06 from 001__elm20180706_055532__dat00.bin



Processed Fri Jul 6 08:03:23 2018 by ELM ver.2012-10-06 from 001__elm20180706_055532__dat00.bin

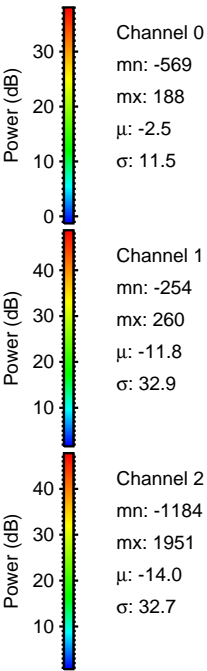
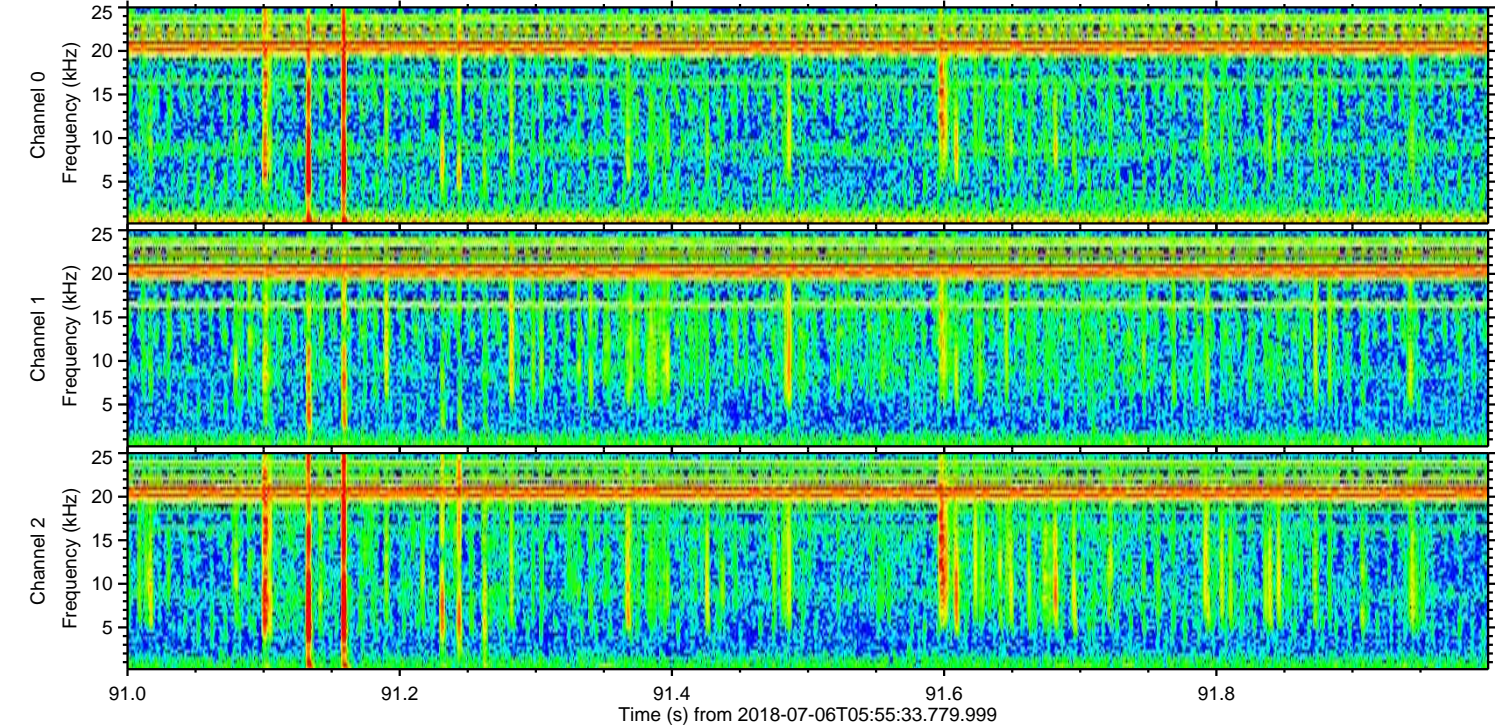
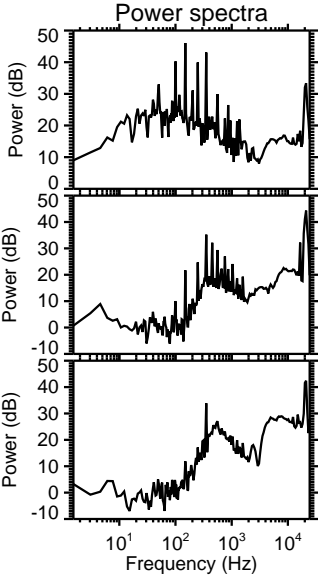
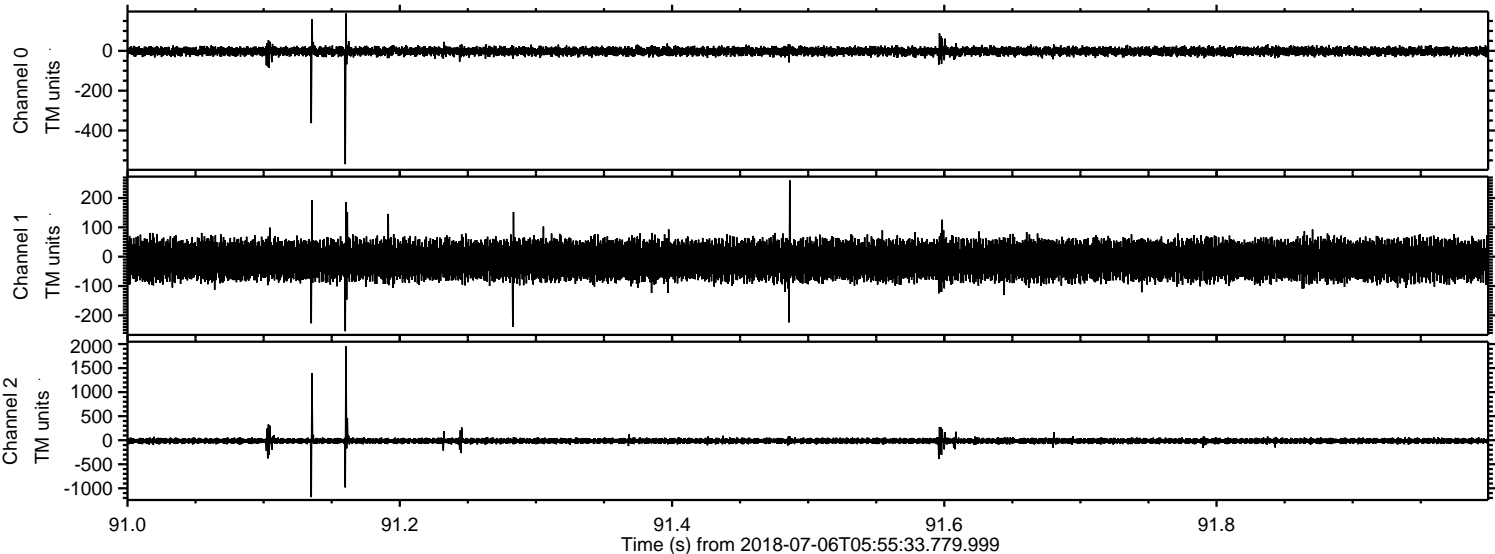


Channel 0
mn: -340
mx: 382
 μ : -2.5
 σ : 11.4

Channel 1
mn: -916
mx: 1128
 μ : -11.7
 σ : 34.0

Channel 2
mn: -1983
mx: 2032
 μ : -13.9
 σ : 33.3

Processed Fri Jul 6 08:03:24 2018 by ELM ver.2012-10-06 from 001__elm20180706_055532__dat00.bin



Channel 0
mn: -569
mx: 188
 μ : -2.5
 σ : 11.5

Channel 1
mn: -254
mx: 260
 μ : -11.8
 σ : 32.9

Channel 2
mn: -1184
mx: 1951
 μ : -14.0
 σ : 32.7

