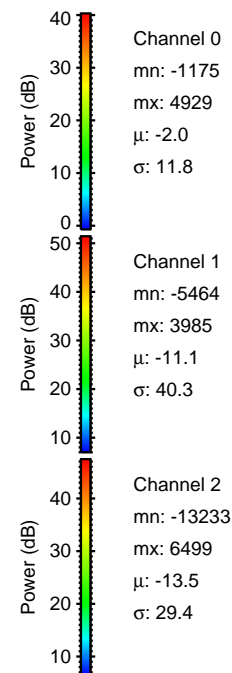
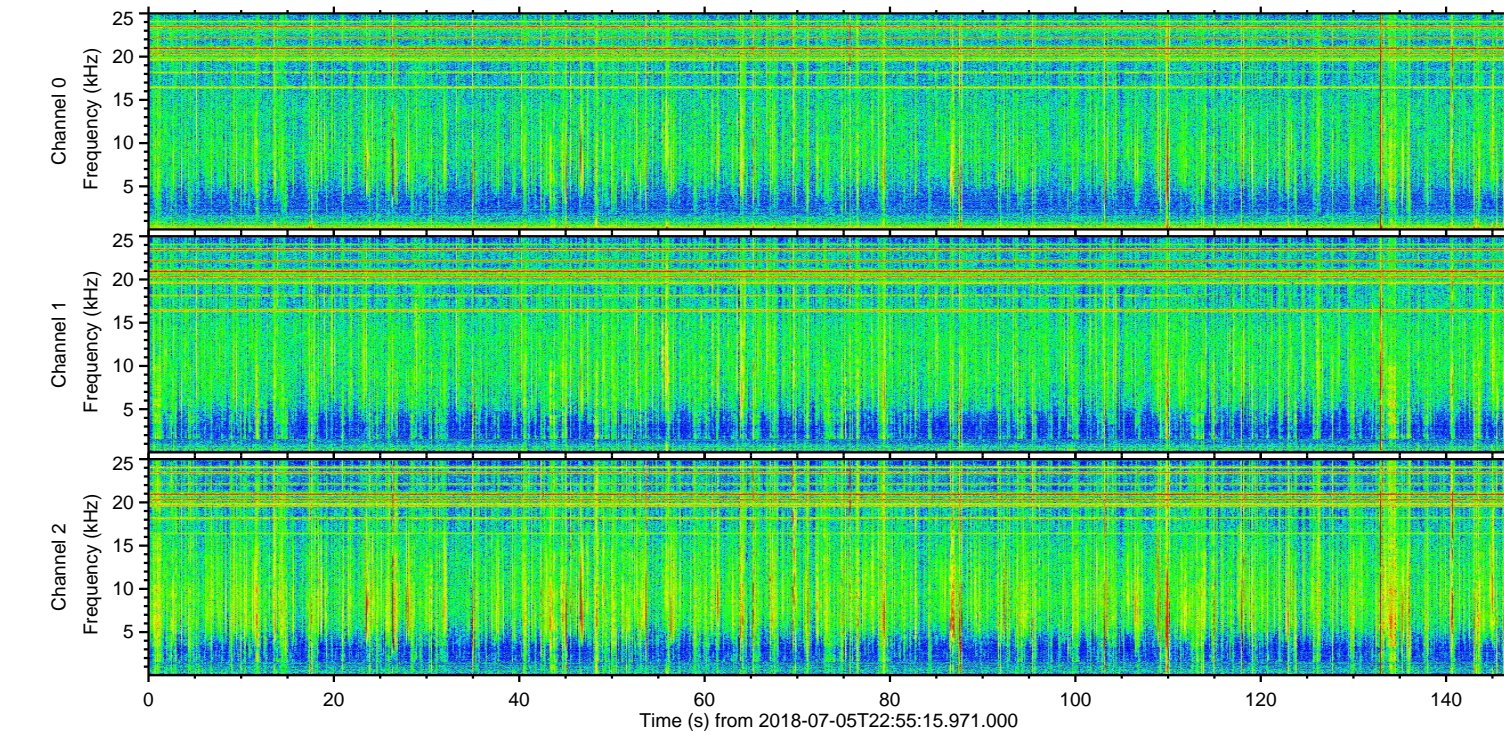
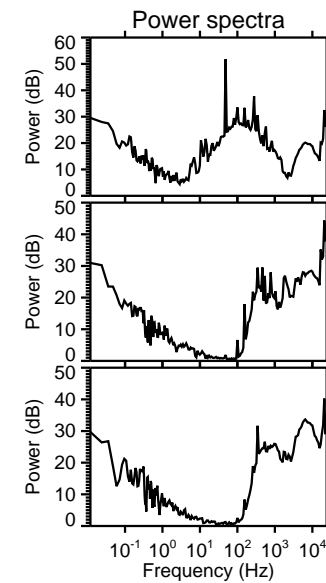
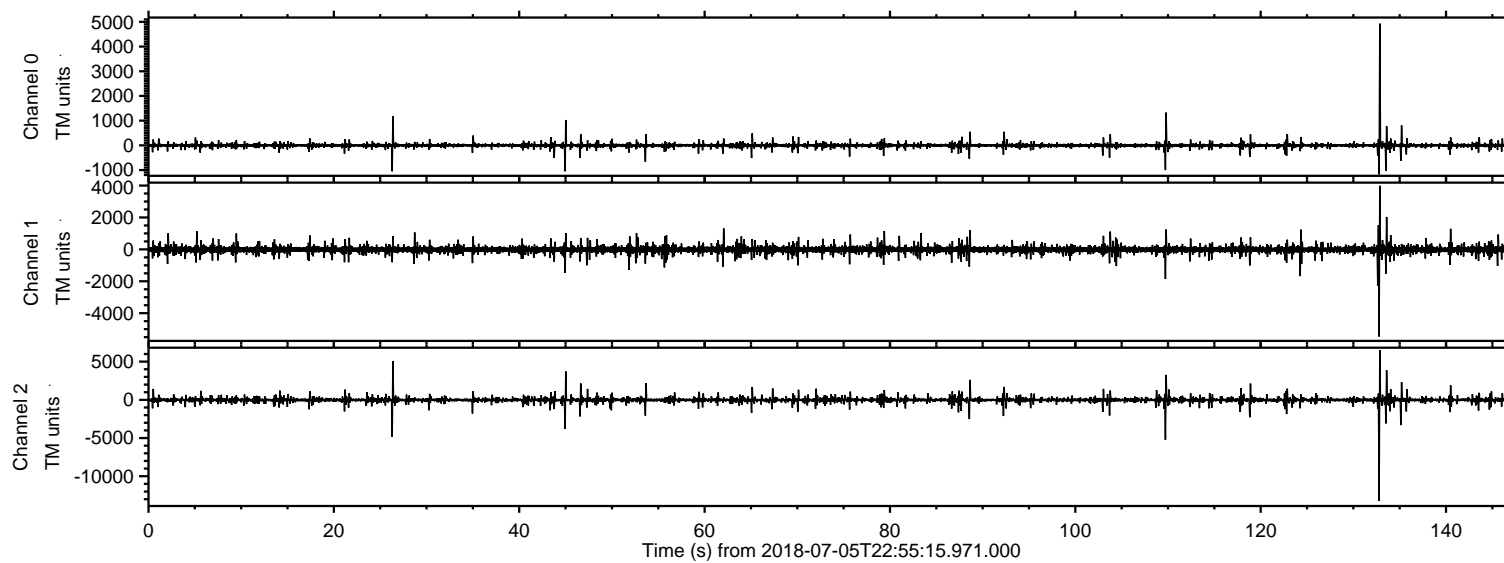


# ELMAVAN 3D WAVEFORMS (Measured data sampled at 50 kHz) 51000 packets of 144 samples from 2018-07-05T22:55:15.971.000.

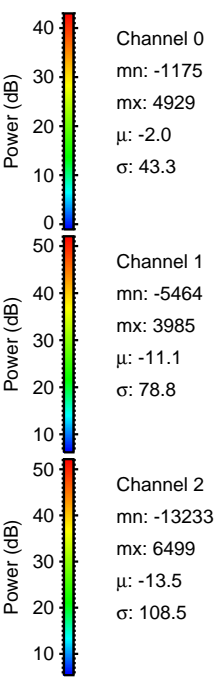
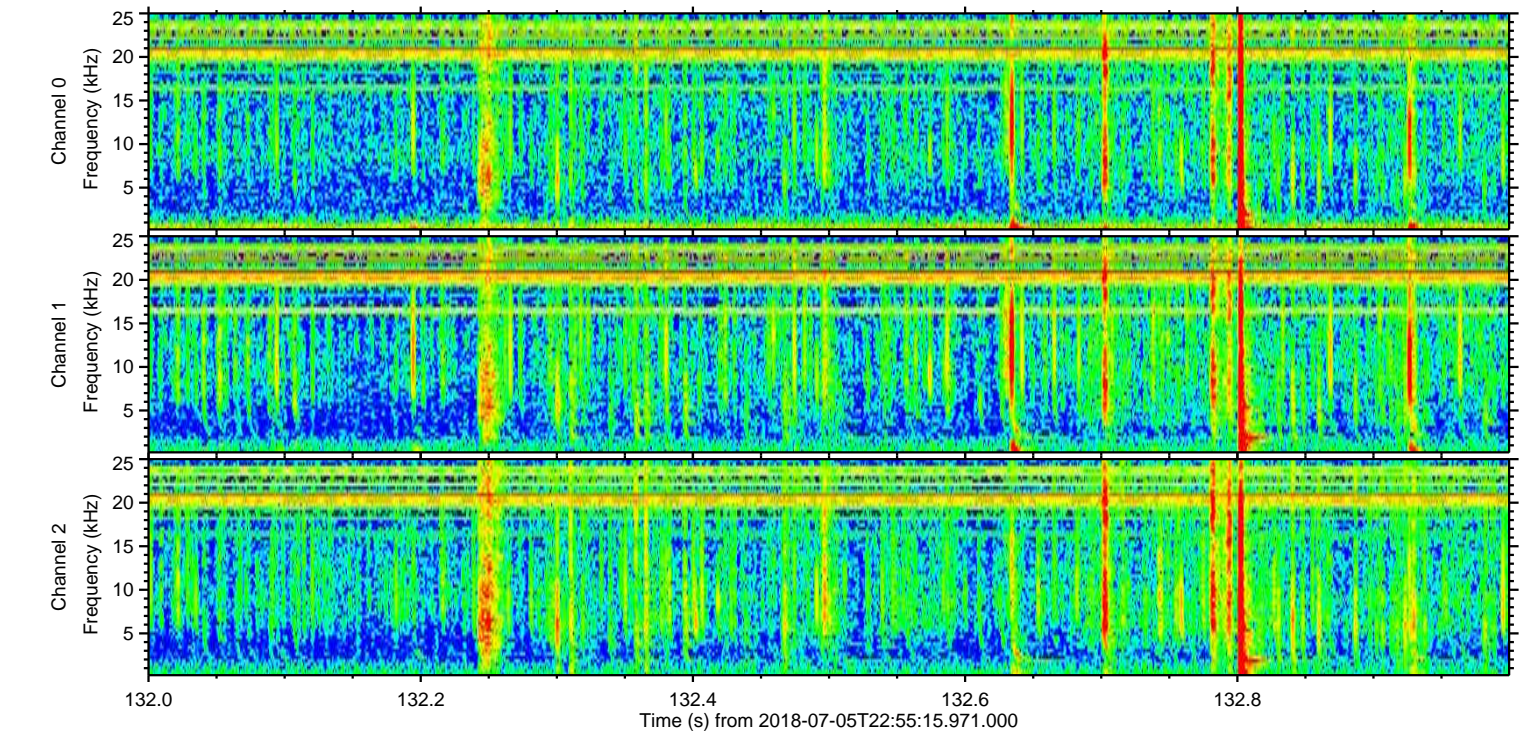
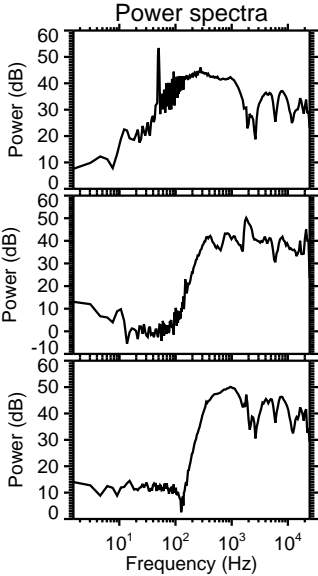
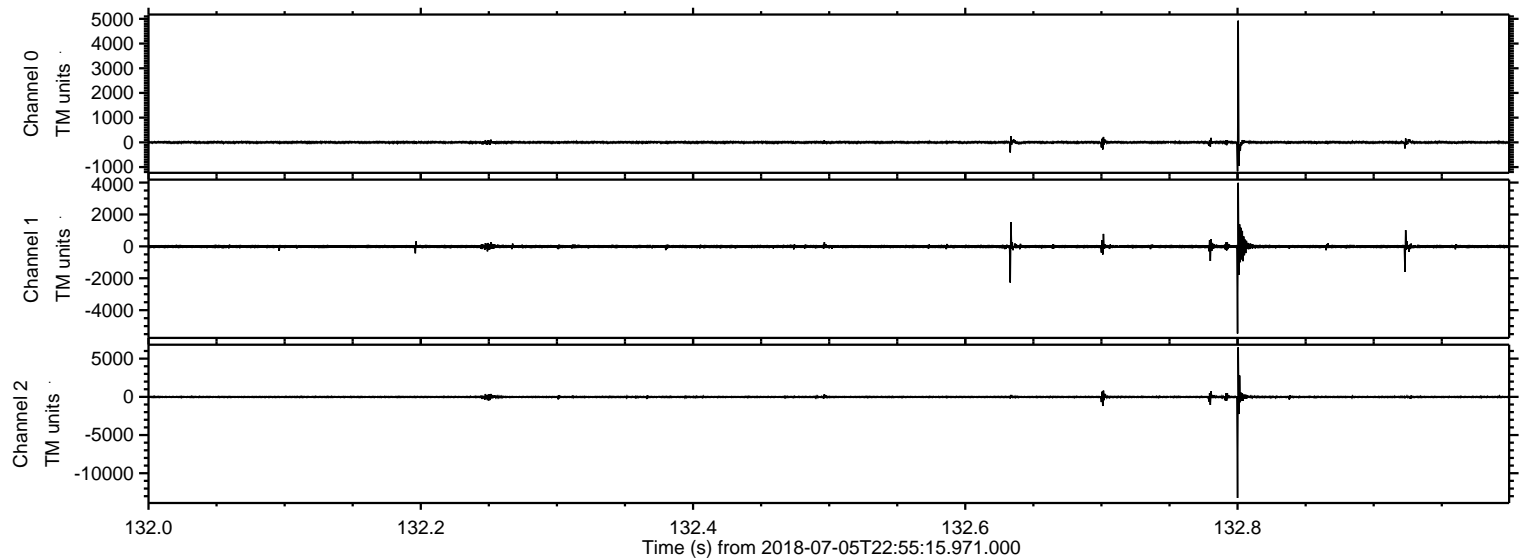
Processed Fri Jul 6 01:03:05 2018 by ELM ver.2012-10-06 from 001\_\_elm20180705\_225514\_\_dat00.bin





ELMAVAN 3D WAVEFORMS (Measured data sampled at 50 kHz) 51000 packets of 144 samples from 2018-07-05T22:55:15.971.000. Part 133/147

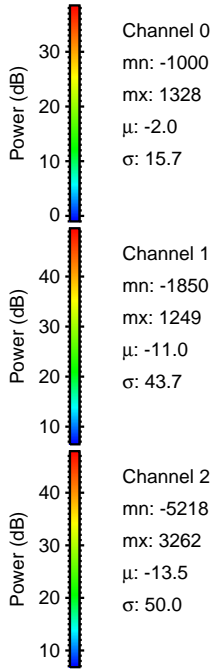
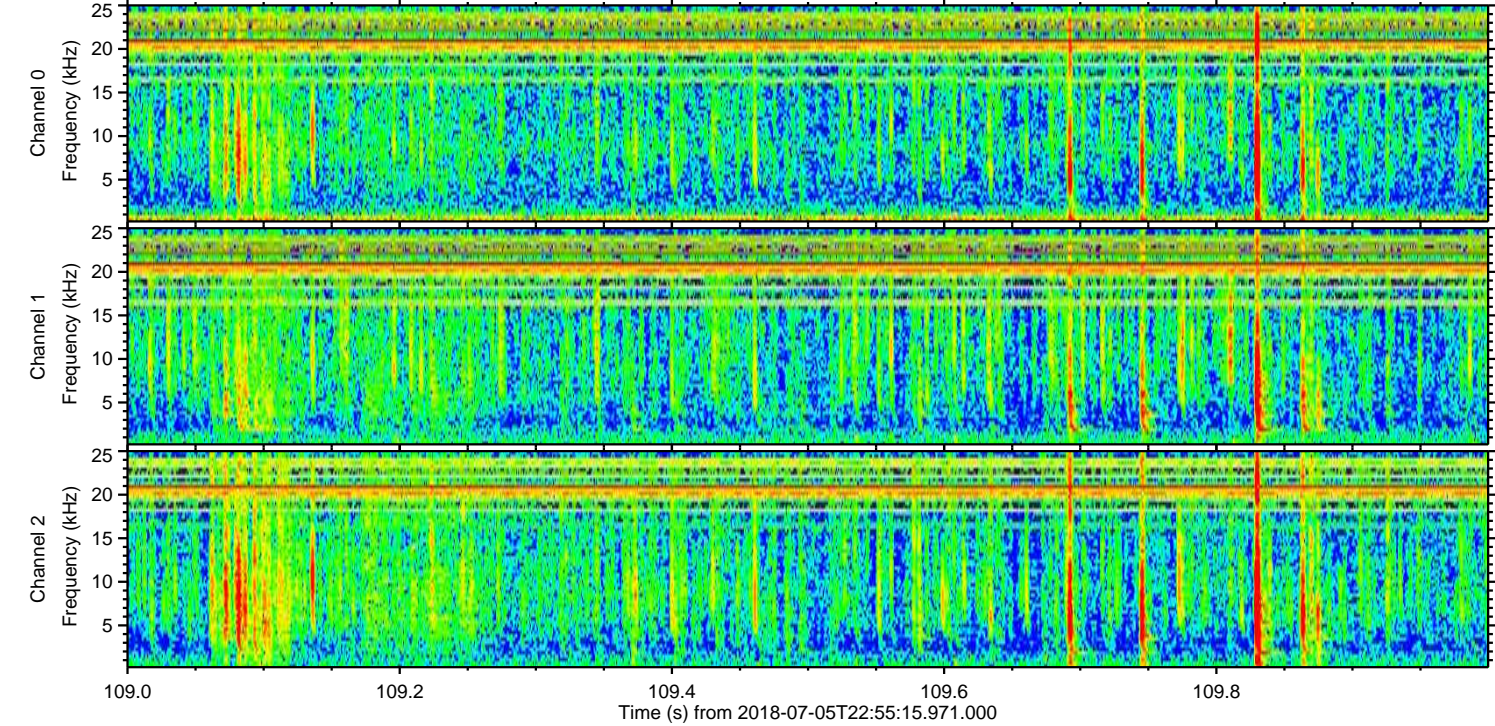
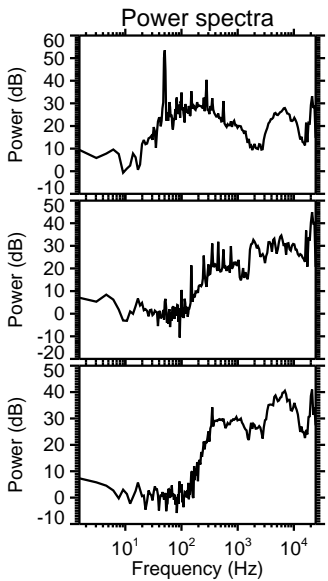
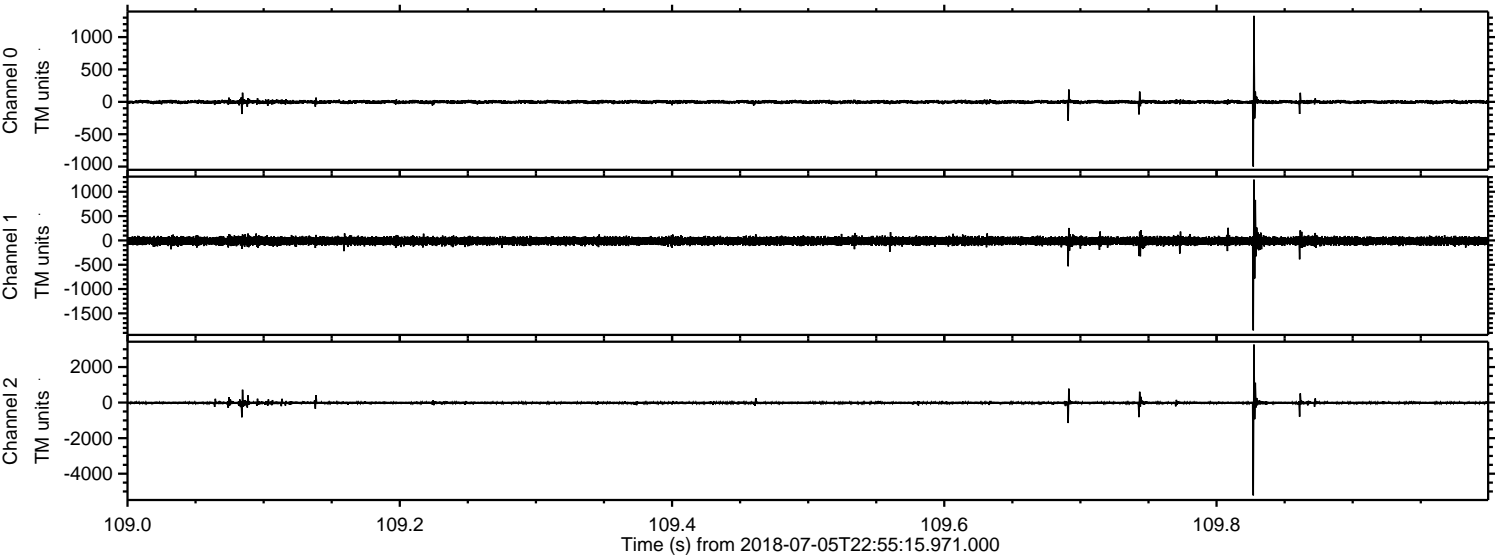
Processed Fri Jul 6 01:03:12 2018 by ELM ver.2012-10-06 from 001\_\_elm20180705\_225514\_\_dat00.bin





ELMAVAN 3D WAVEFORMS (Measured data sampled at 50 kHz) 51000 packets of 144 samples from 2018-07-05T22:55:15.971.000. Part 110/147

Processed Fri Jul 6 01:03:13 2018 by ELM ver.2012-10-06 from 001\_\_elm20180705\_225514\_\_dat00.bin



Channel 0  
mn: -1000  
mx: 1328  
 $\mu$ : -2.0  
 $\sigma$ : 15.7

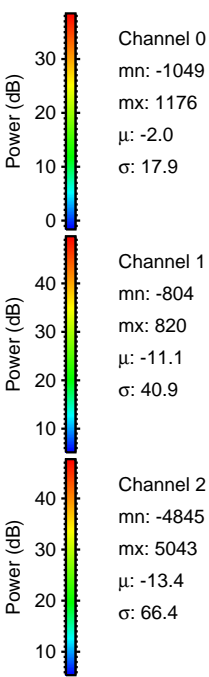
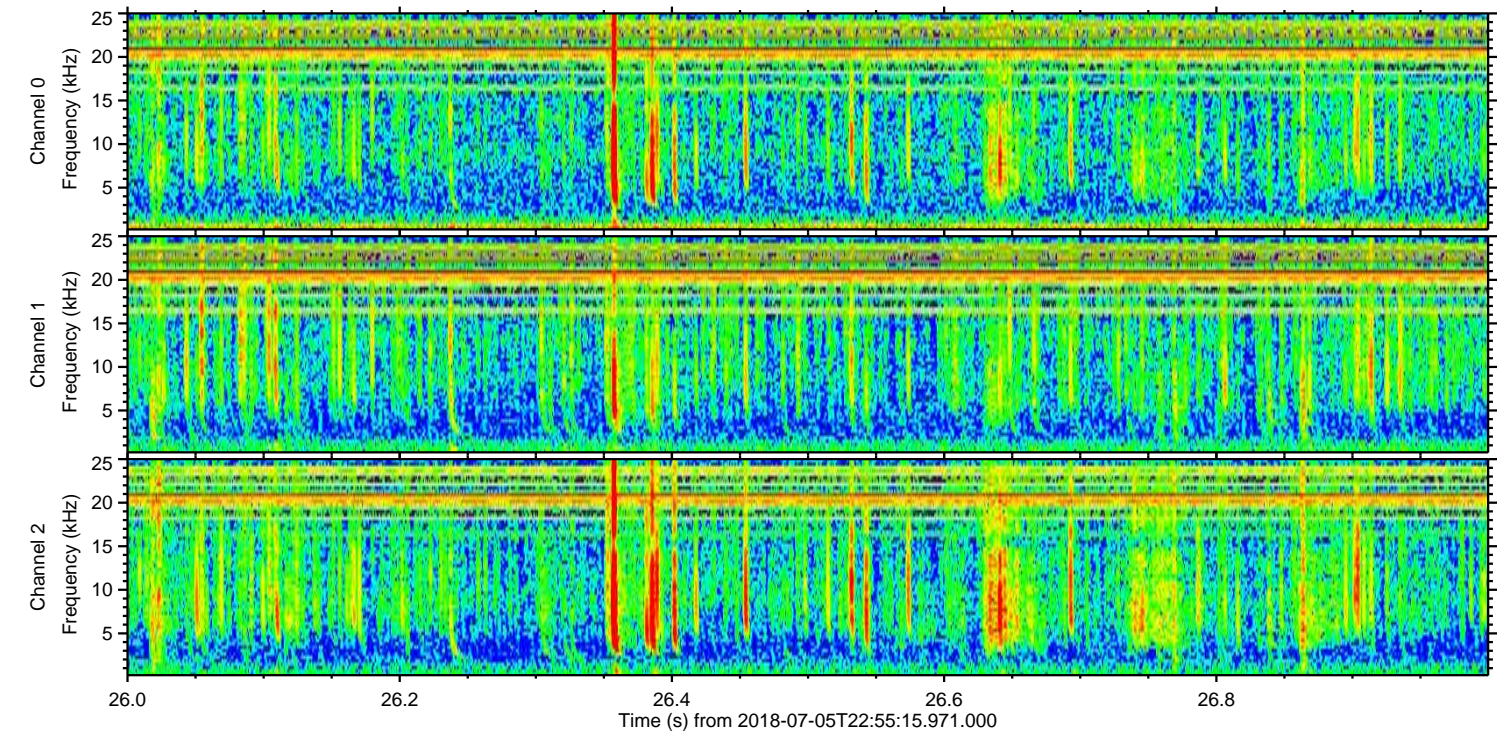
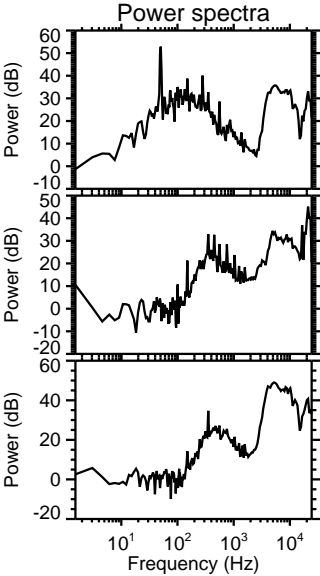
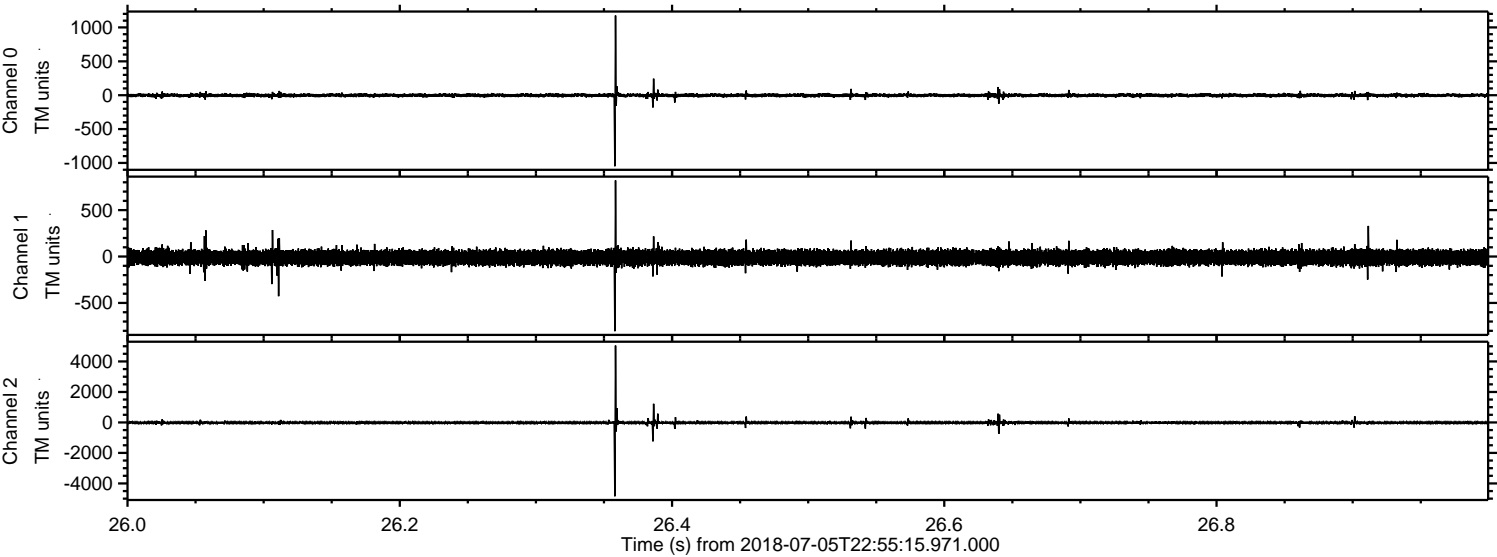
Channel 1  
mn: -1850  
mx: 1249  
 $\mu$ : -11.0  
 $\sigma$ : 43.7

Channel 2  
mn: -5218  
mx: 3262  
 $\mu$ : -13.5  
 $\sigma$ : 50.0



ELMAVAN 3D WAVEFORMS (Measured data sampled at 50 kHz) 51000 packets of 144 samples from 2018-07-05T22:55:15.971.000. Part 27/147

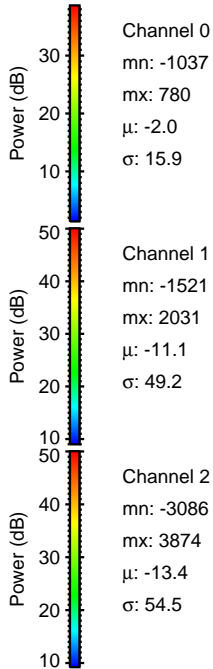
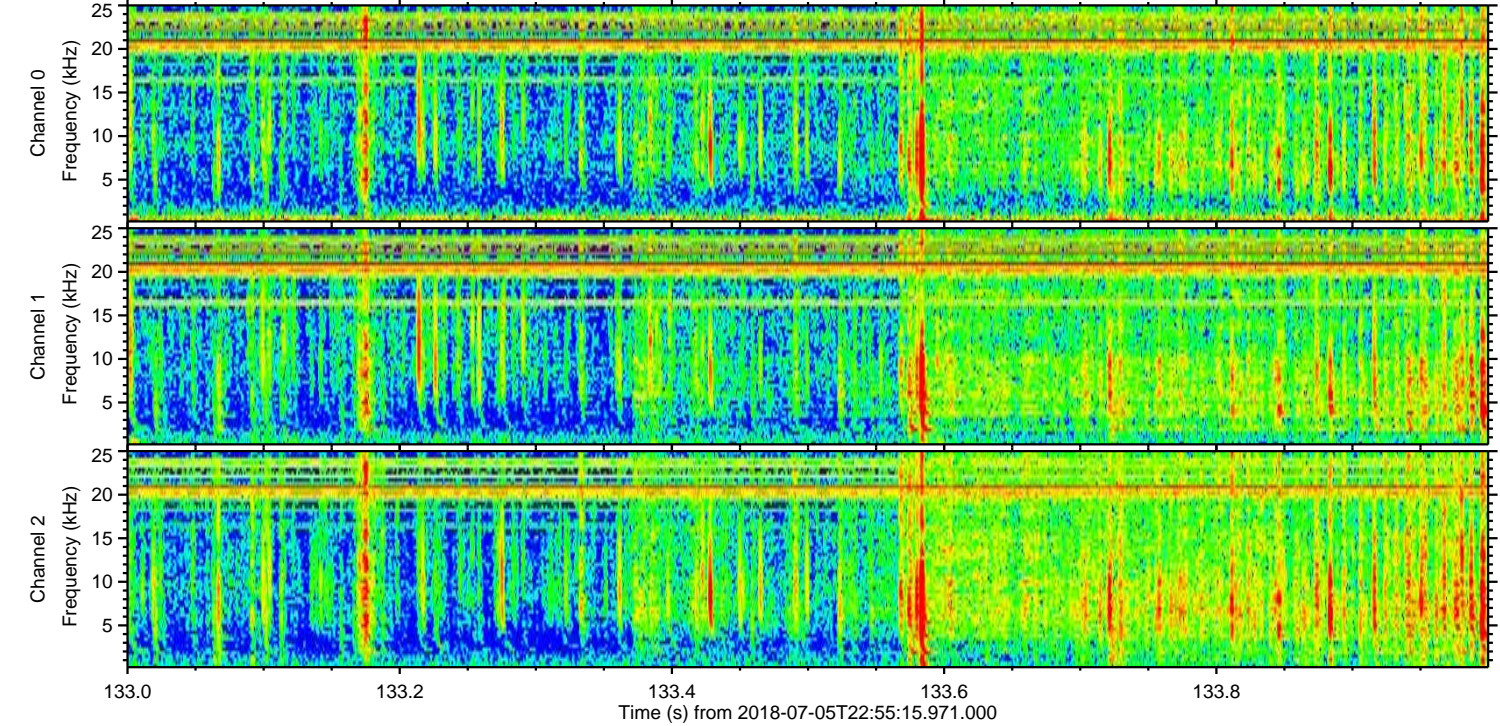
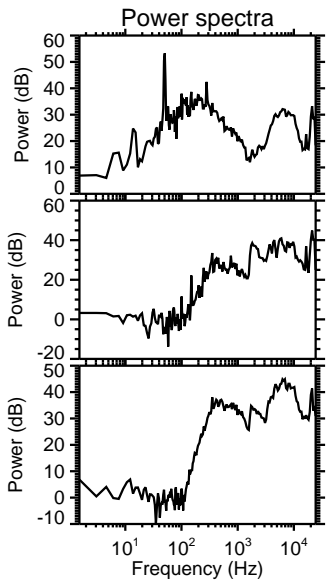
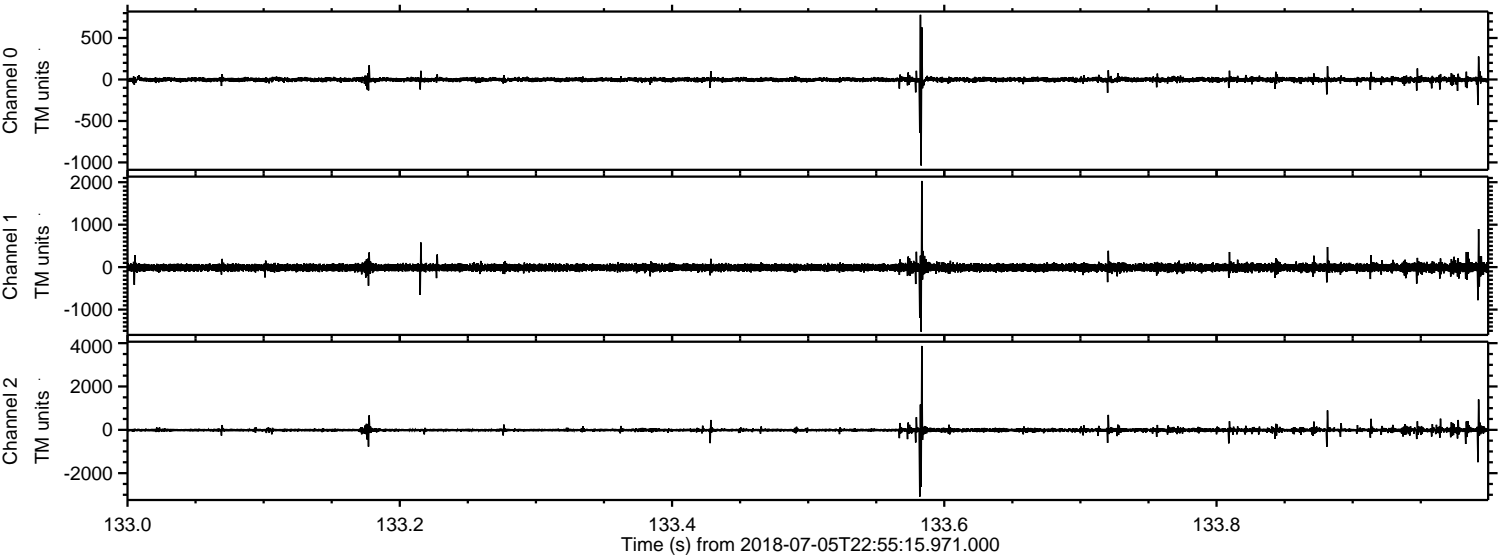
Processed Fri Jul 6 01:03:13 2018 by ELM ver.2012-10-06 from 001\_\_elm20180705\_225514\_\_dat00.bin





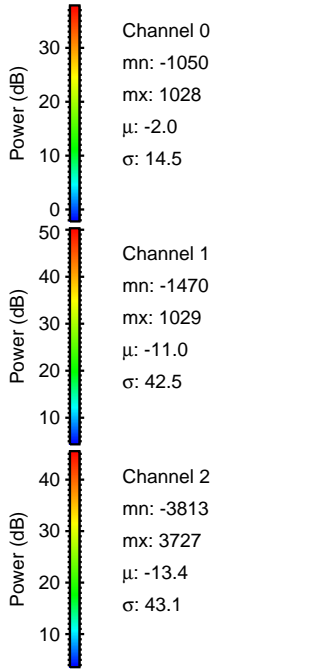
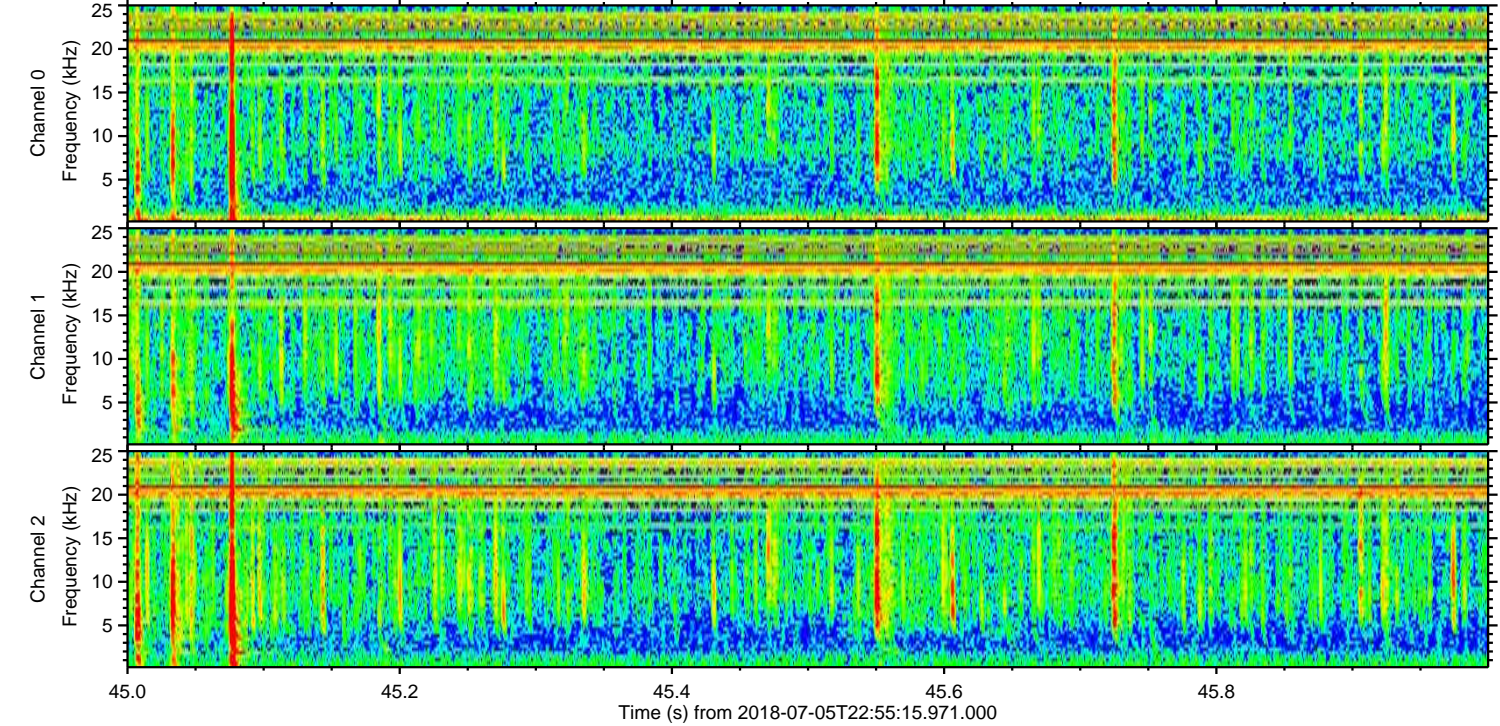
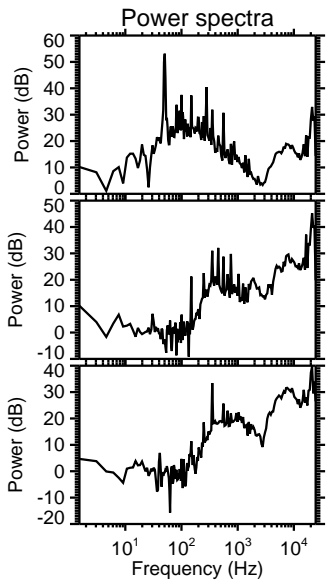
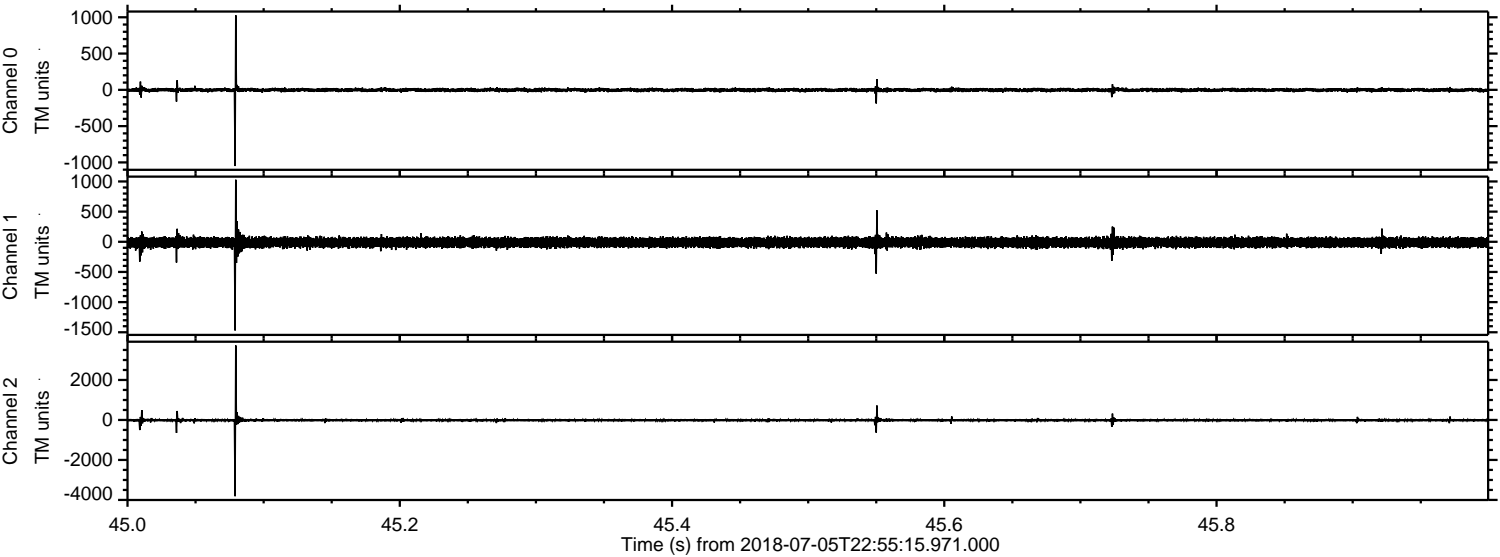
ELMAVAN 3D WAVEFORMS (Measured data sampled at 50 kHz) 51000 packets of 144 samples from 2018-07-05T22:55:15.971.000. Part 134/147

Processed Fri Jul 6 01:03:14 2018 by ELM ver.2012-10-06 from 001\_\_elm20180705\_225514\_\_dat00.bin





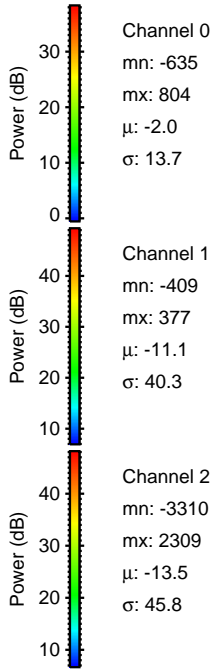
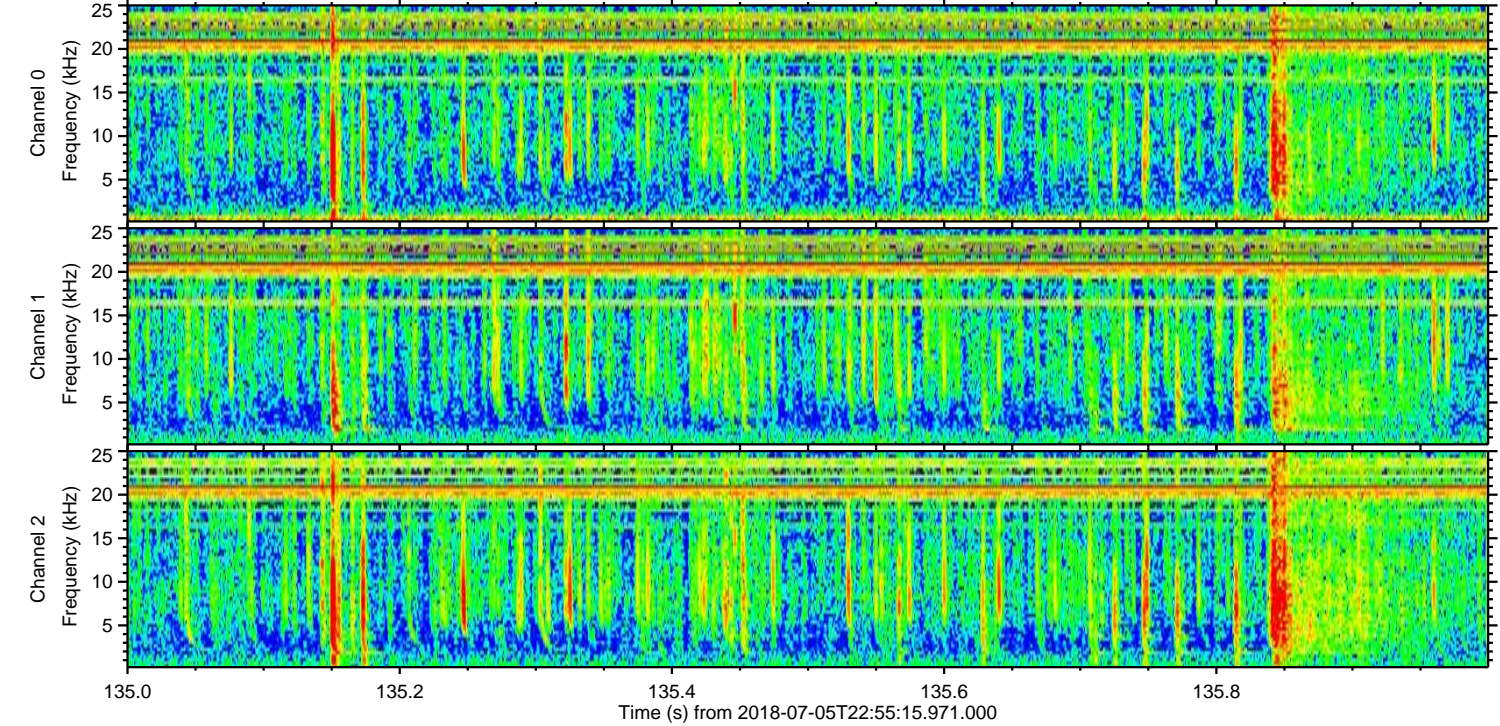
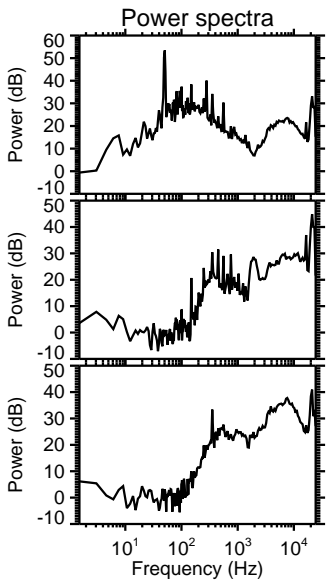
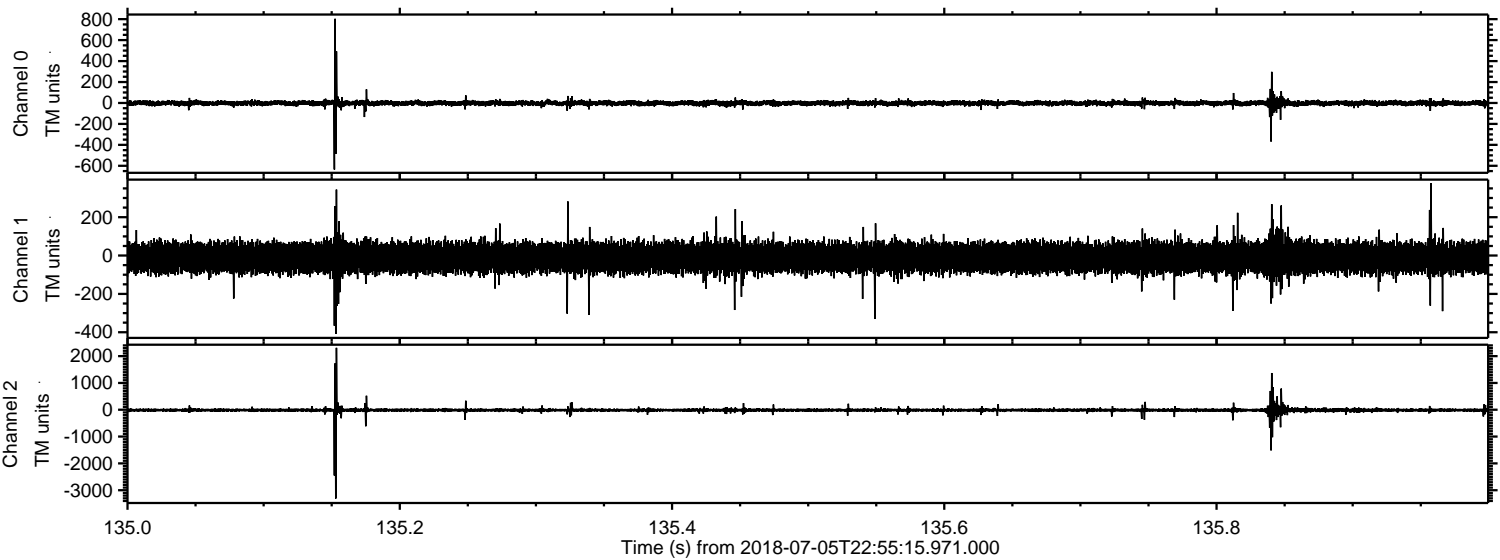
Processed Fri Jul 6 01:03:15 2018 by ELM ver.2012-10-06 from 001\_\_elm20180705\_225514\_\_dat00.bin





ELMAVAN 3D WAVEFORMS (Measured data sampled at 50 kHz) 51000 packets of 144 samples from 2018-07-05T22:55:15.971.000. Part 136/147

Processed Fri Jul 6 01:03:16 2018 by ELM ver.2012-10-06 from 001\_\_elm20180705\_225514\_\_dat00.bin



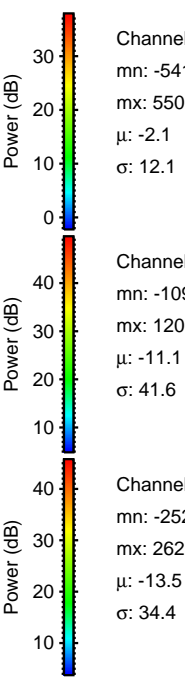
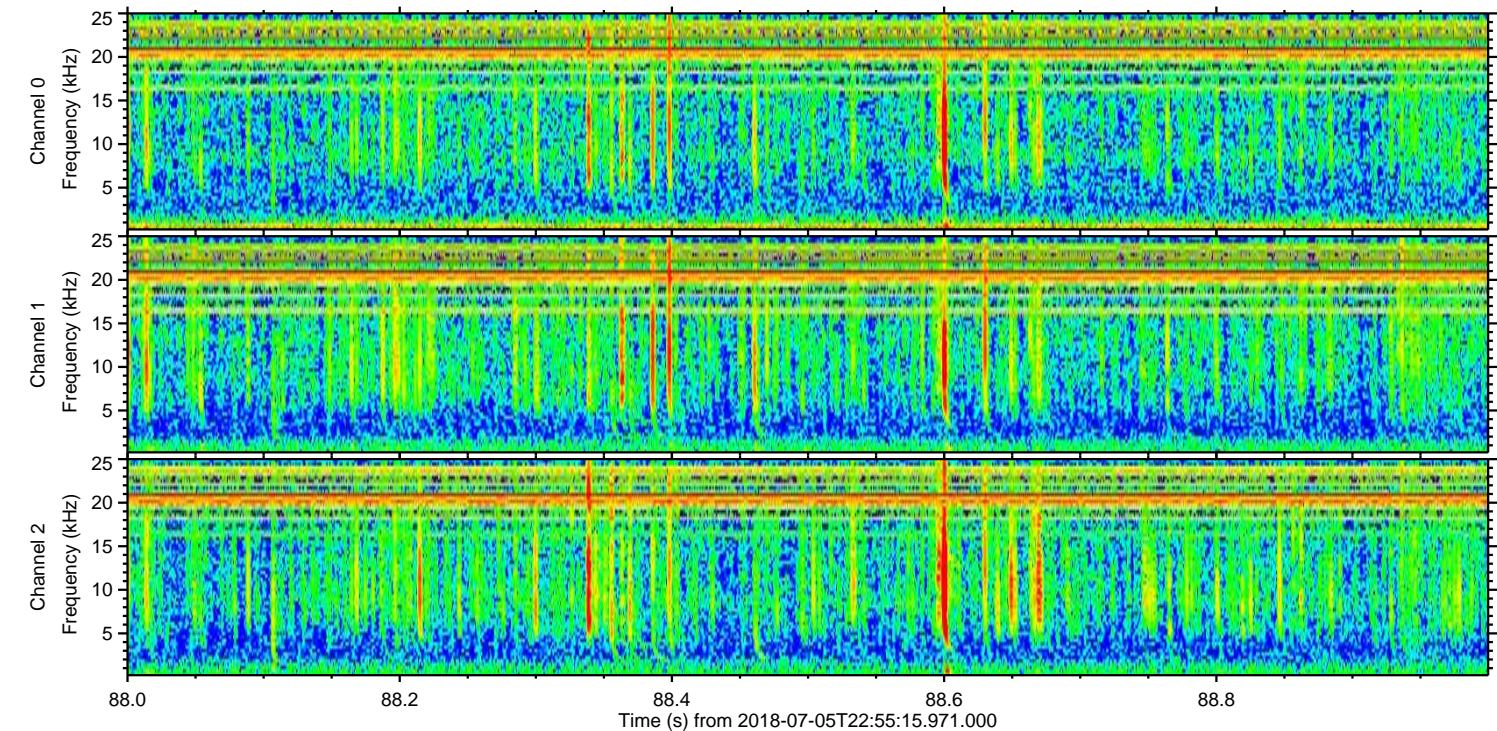
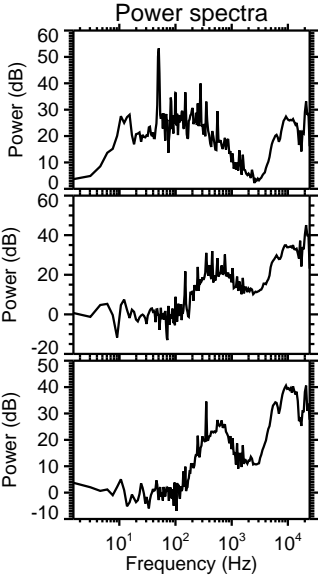
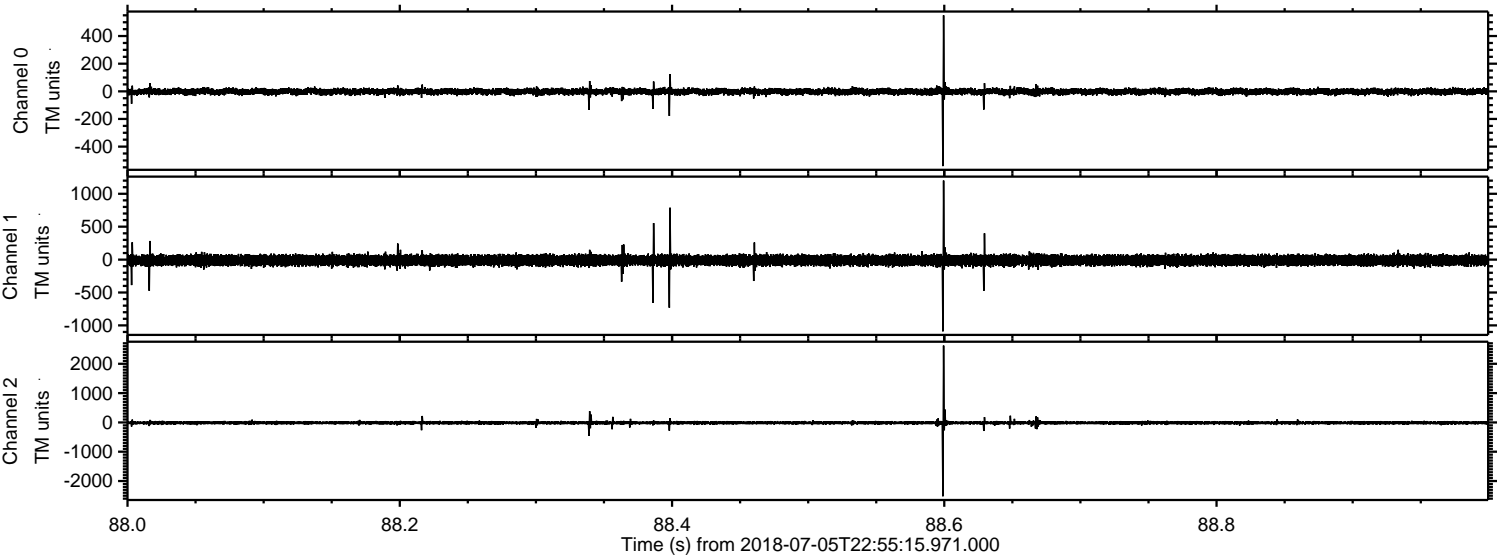
Channel 0  
mn: -635  
mx: 804  
 $\mu$ : -2.0  
 $\sigma$ : 13.7

Channel 1  
mn: -409  
mx: 377  
 $\mu$ : -11.1  
 $\sigma$ : 40.3

Channel 2  
mn: -3310  
mx: 2309  
 $\mu$ : -13.5  
 $\sigma$ : 45.8



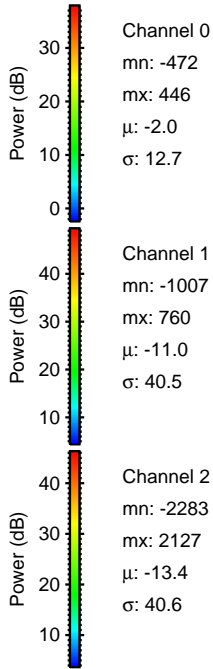
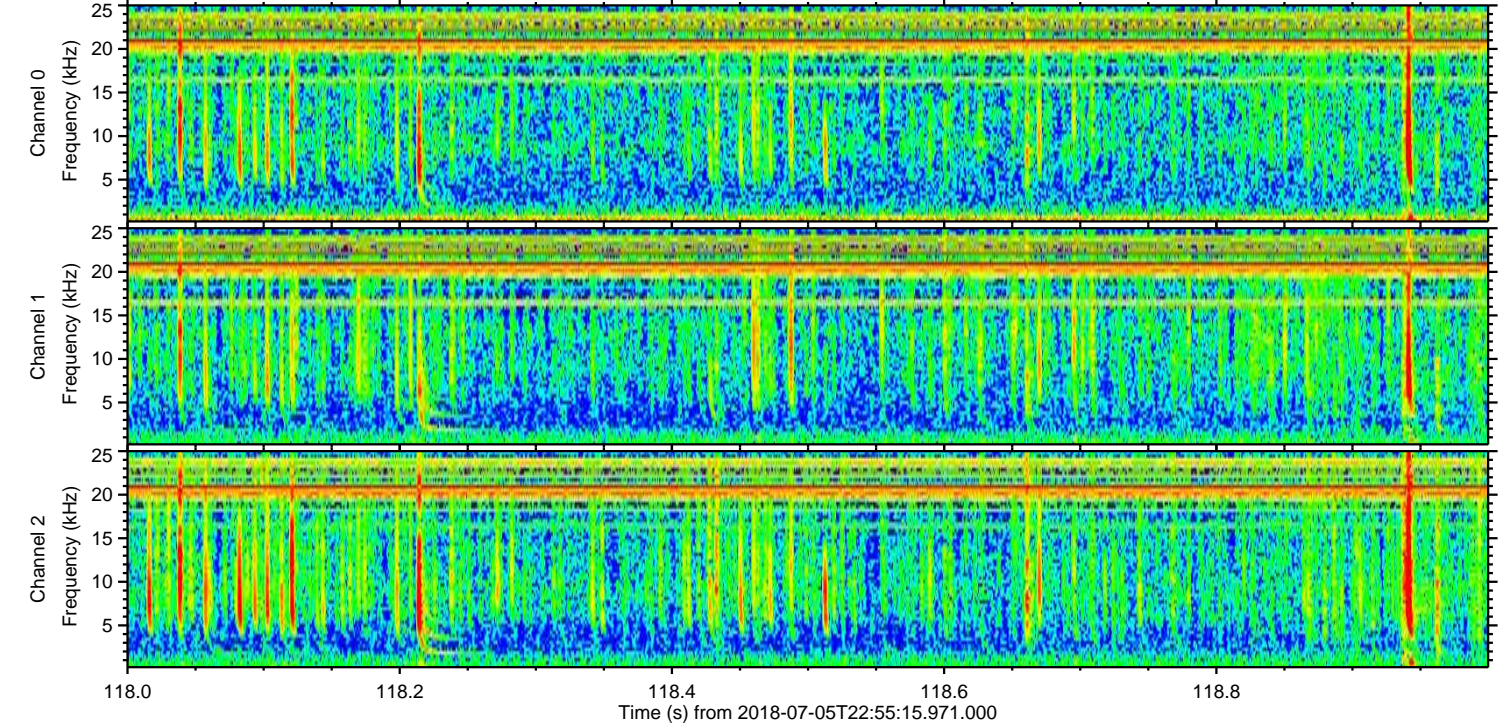
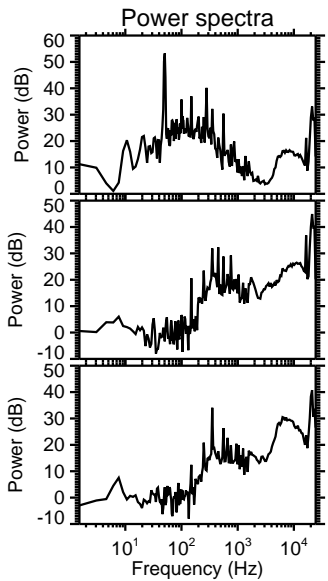
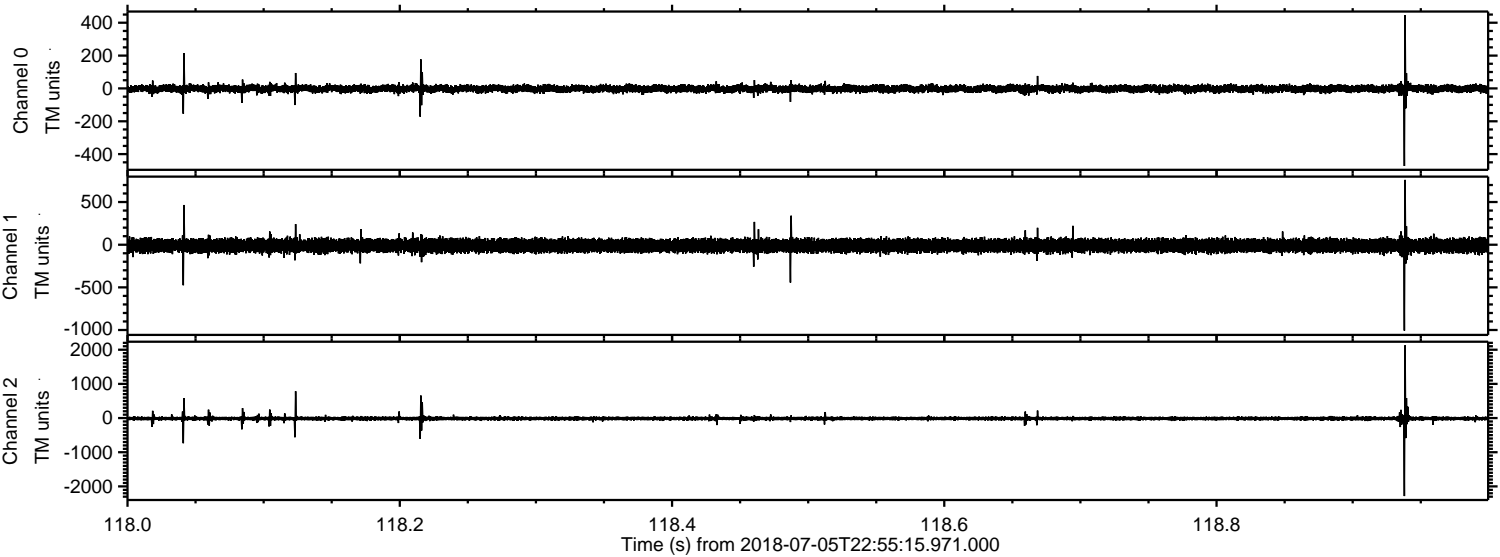
Processed Fri Jul 6 01:03:17 2018 by ELM ver.2012-10-06 from 001\_\_elm20180705\_225514\_\_dat00.bin





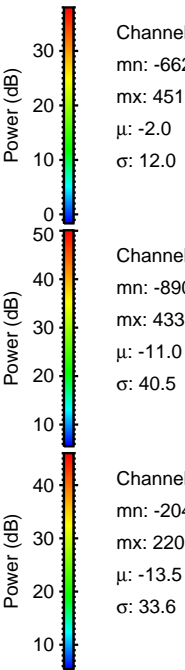
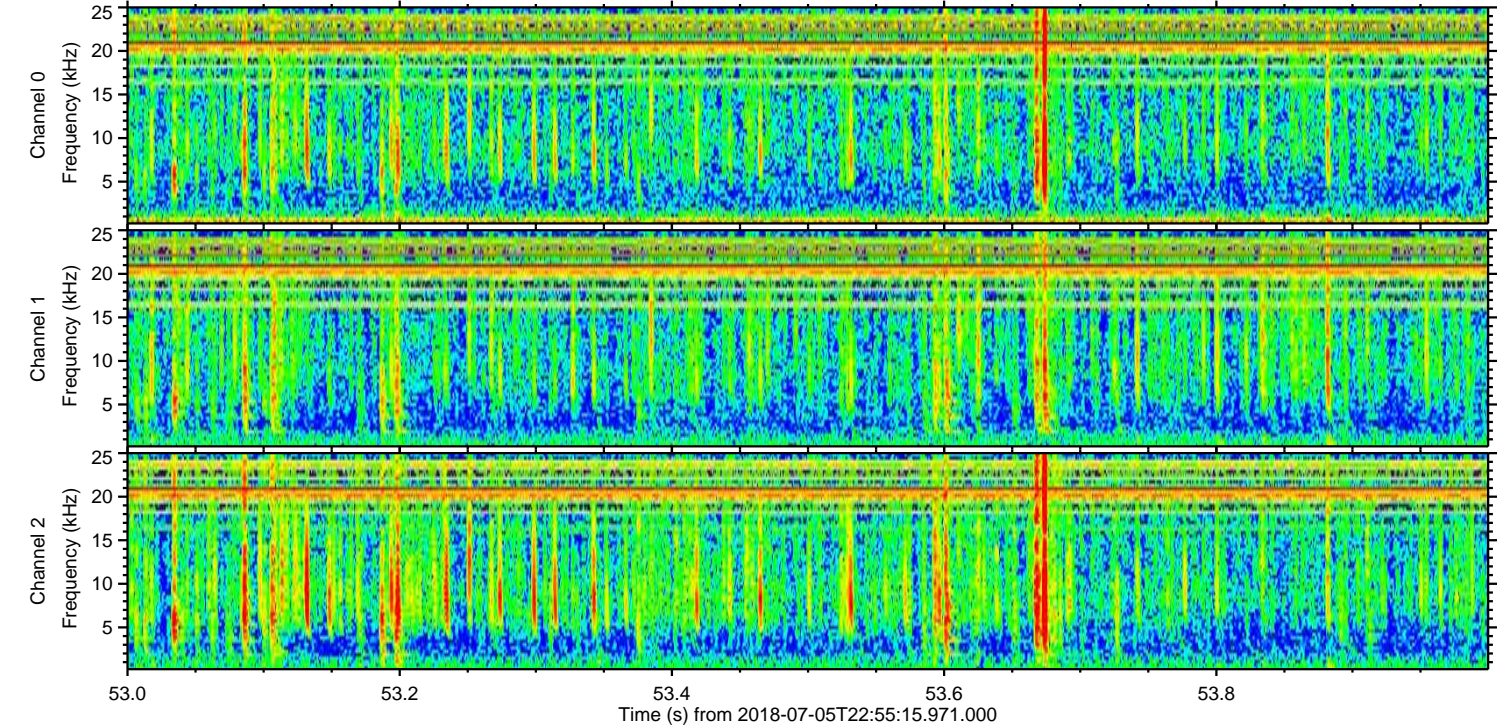
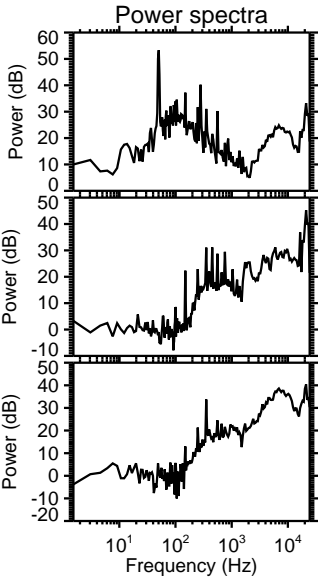
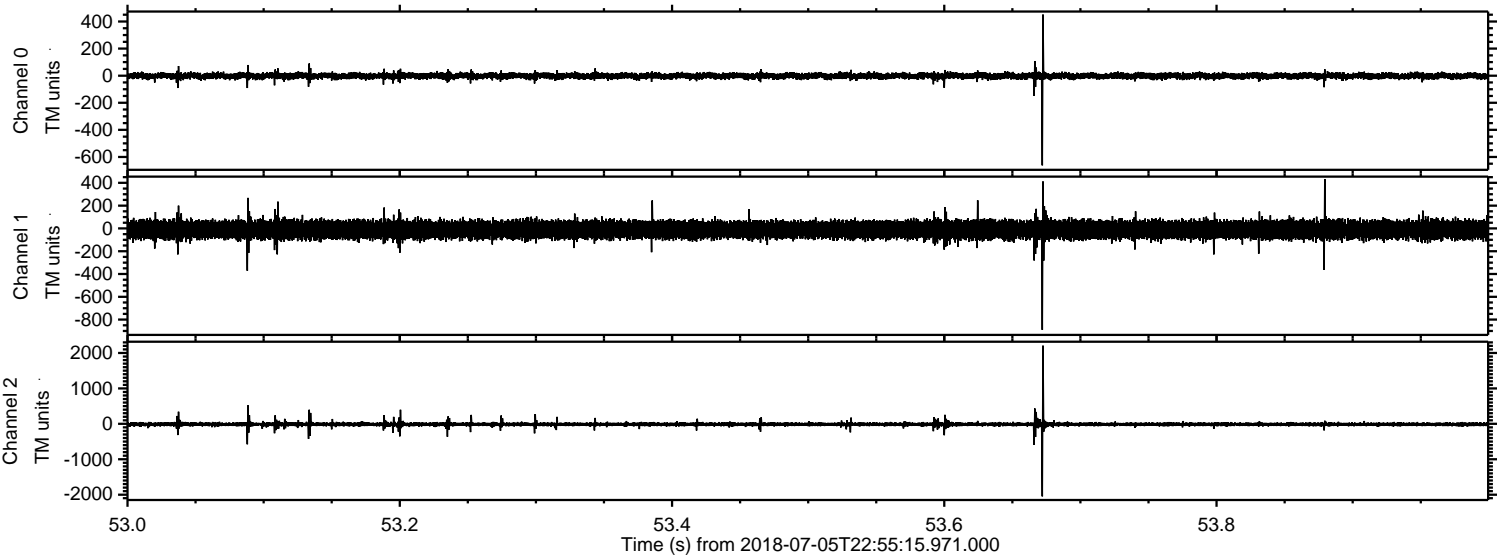
ELMAVAN 3D WAVEFORMS (Measured data sampled at 50 kHz) 51000 packets of 144 samples from 2018-07-05T22:55:15.971.000. Part 119/147

Processed Fri Jul 6 01:03:17 2018 by ELM ver.2012-10-06 from 001\_\_elm20180705\_225514\_\_dat00.bin





Processed Fri Jul 6 01:03:18 2018 by ELM ver.2012-10-06 from 001\_\_elm20180705\_225514\_\_dat00.bin



Channel 0  
mn: -662  
mx: 451  
 $\mu$ : -2.0  
 $\sigma$ : 12.0

Channel 1  
mn: -890  
mx: 433  
 $\mu$ : -11.0  
 $\sigma$ : 40.5

Channel 2  
mn: -2048  
mx: 2208  
 $\mu$ : -13.5  
 $\sigma$ : 33.6



Processed Fri Jul 6 01:03:19 2018 by ELM ver.2012-10-06 from 001\_\_elm20180705\_225514\_\_dat00.bin

