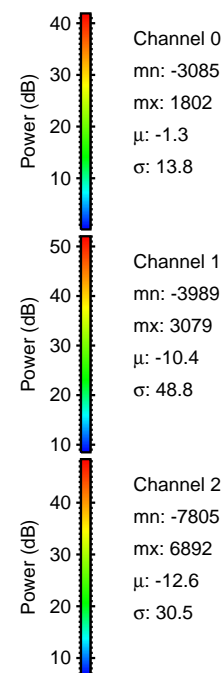
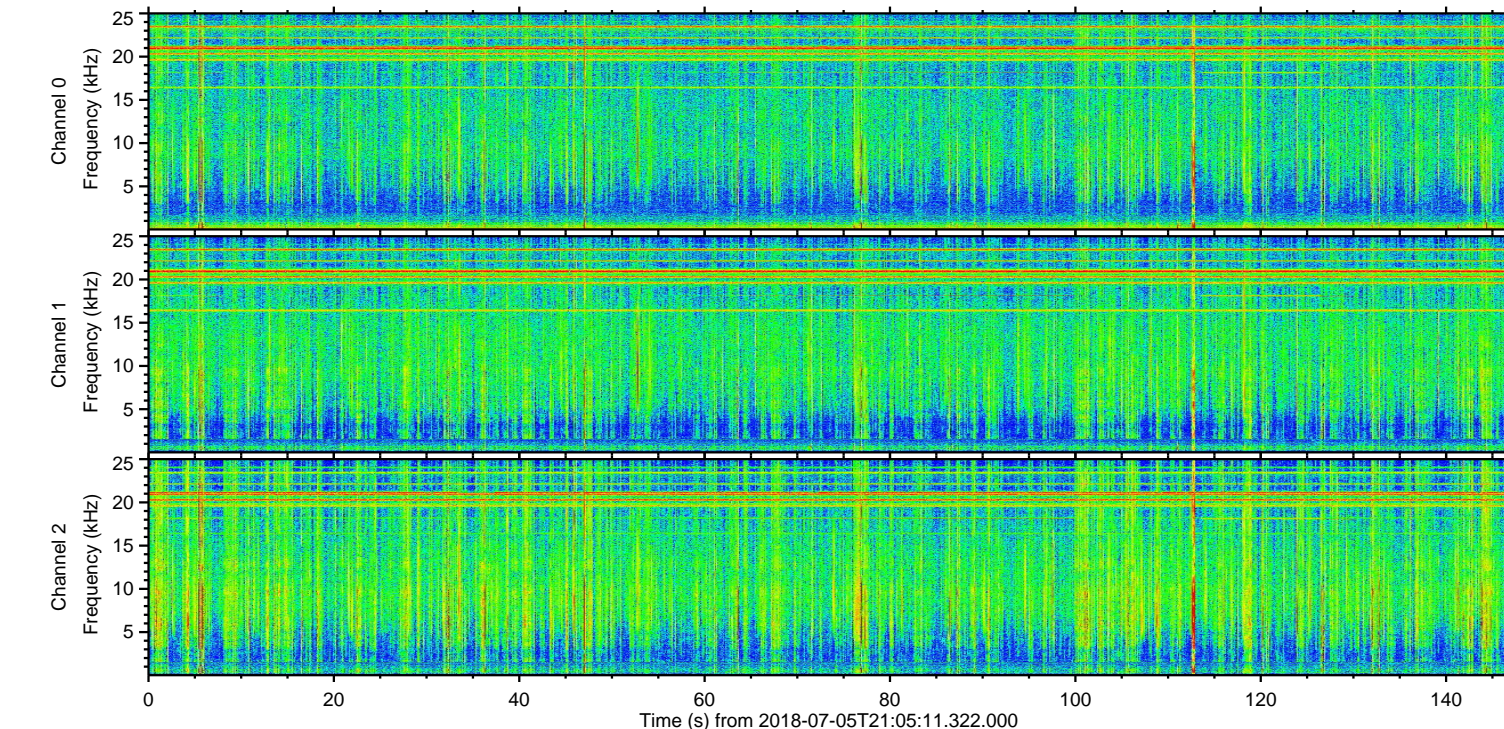
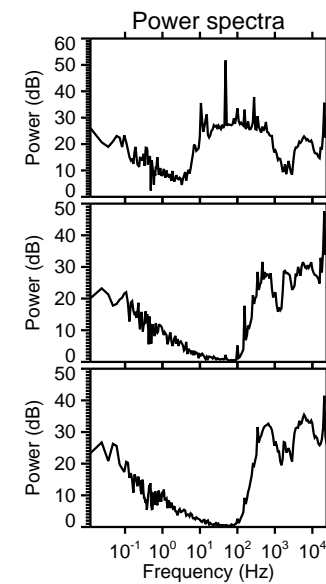
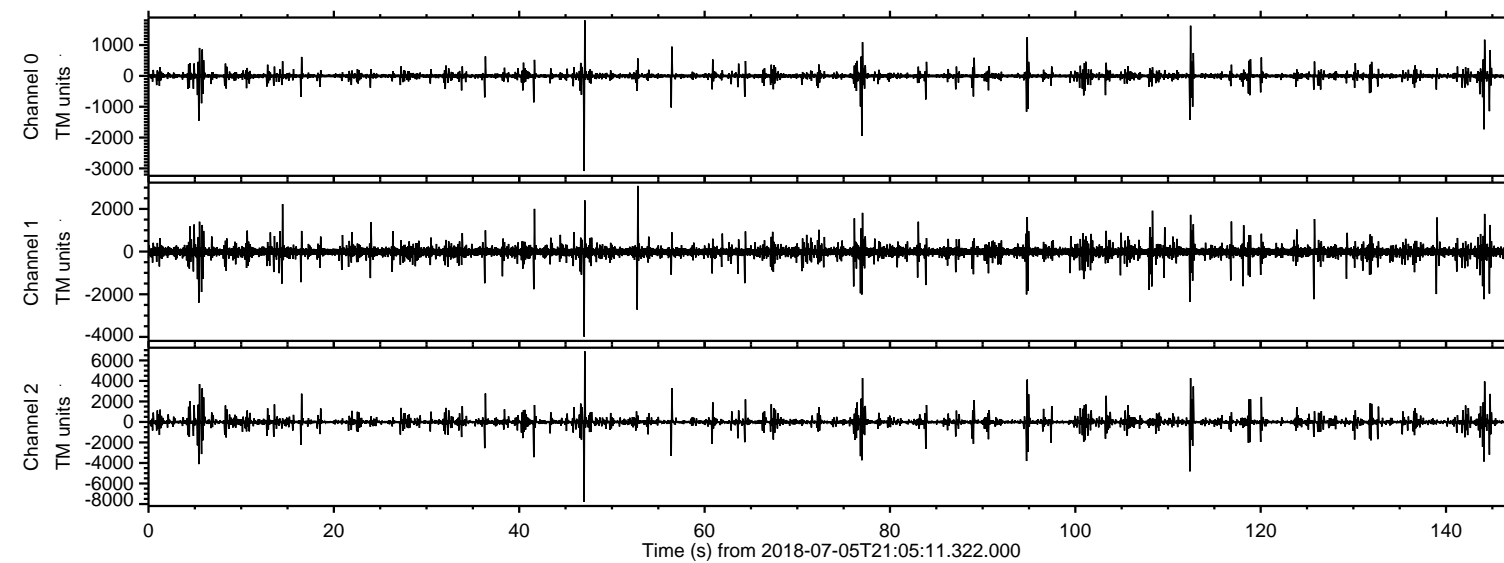
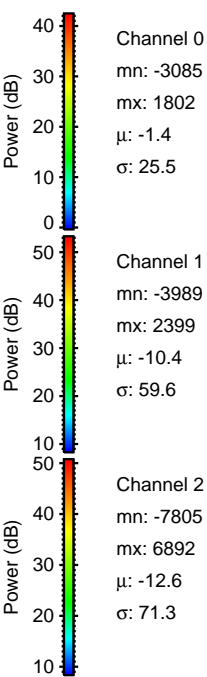
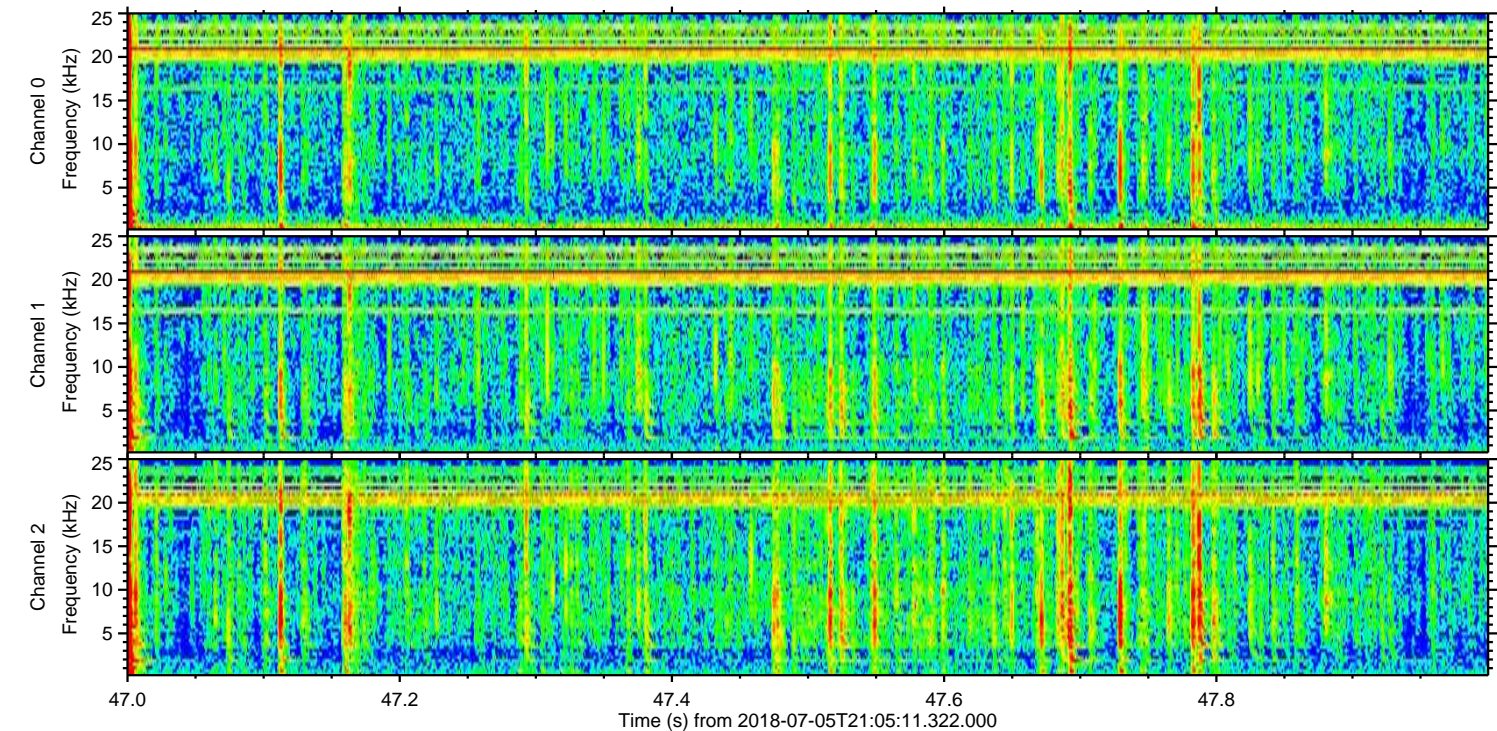
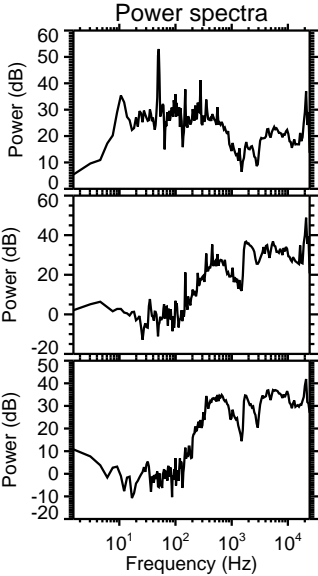
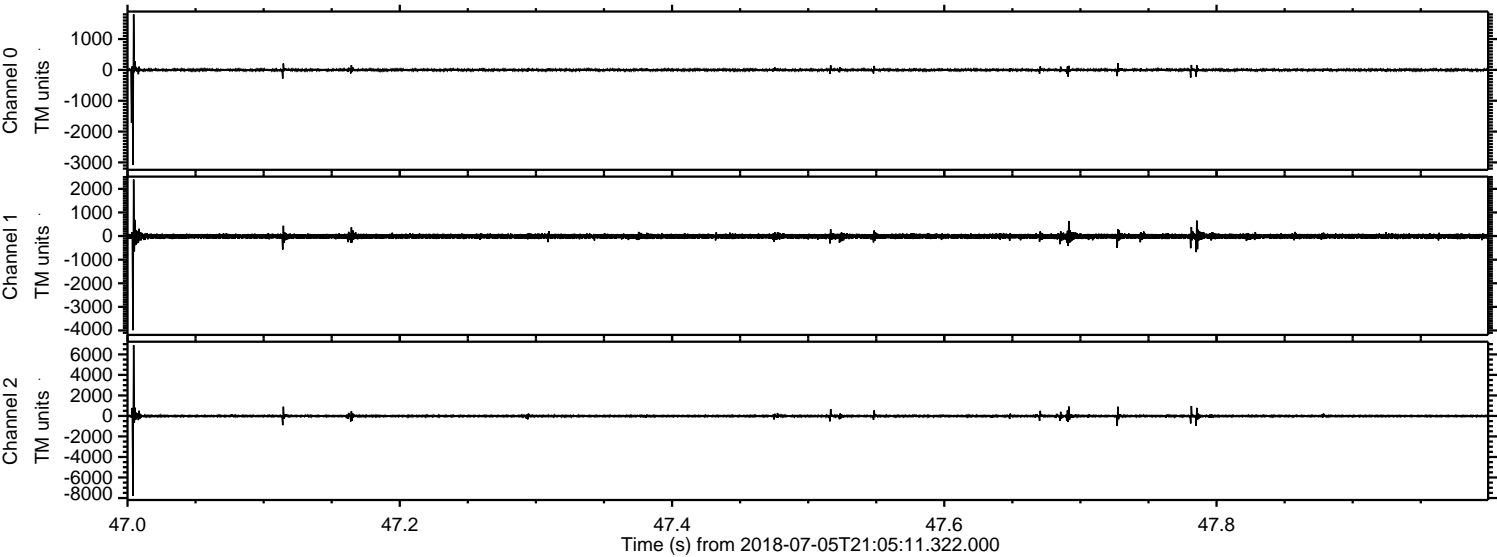


ELMAVAN 3D WAVEFORMS (Measured data sampled at 50 kHz) 51000 packets of 144 samples from 2018-07-05T21:05:11.322.000.

Processed Thu Jul 5 23:12:50 2018 by ELM ver.2012-10-06 from 001__elm20180705_210510__dat00.bin

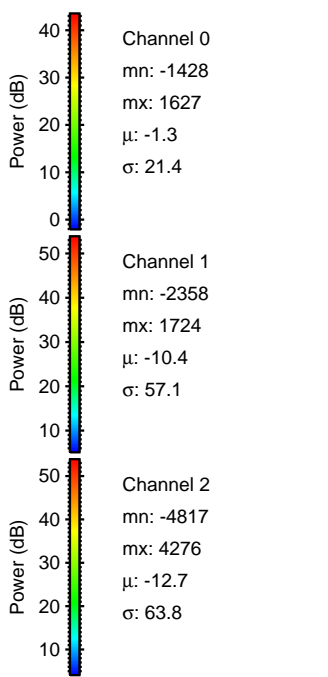
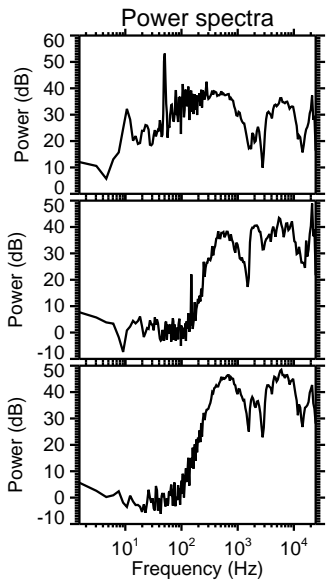
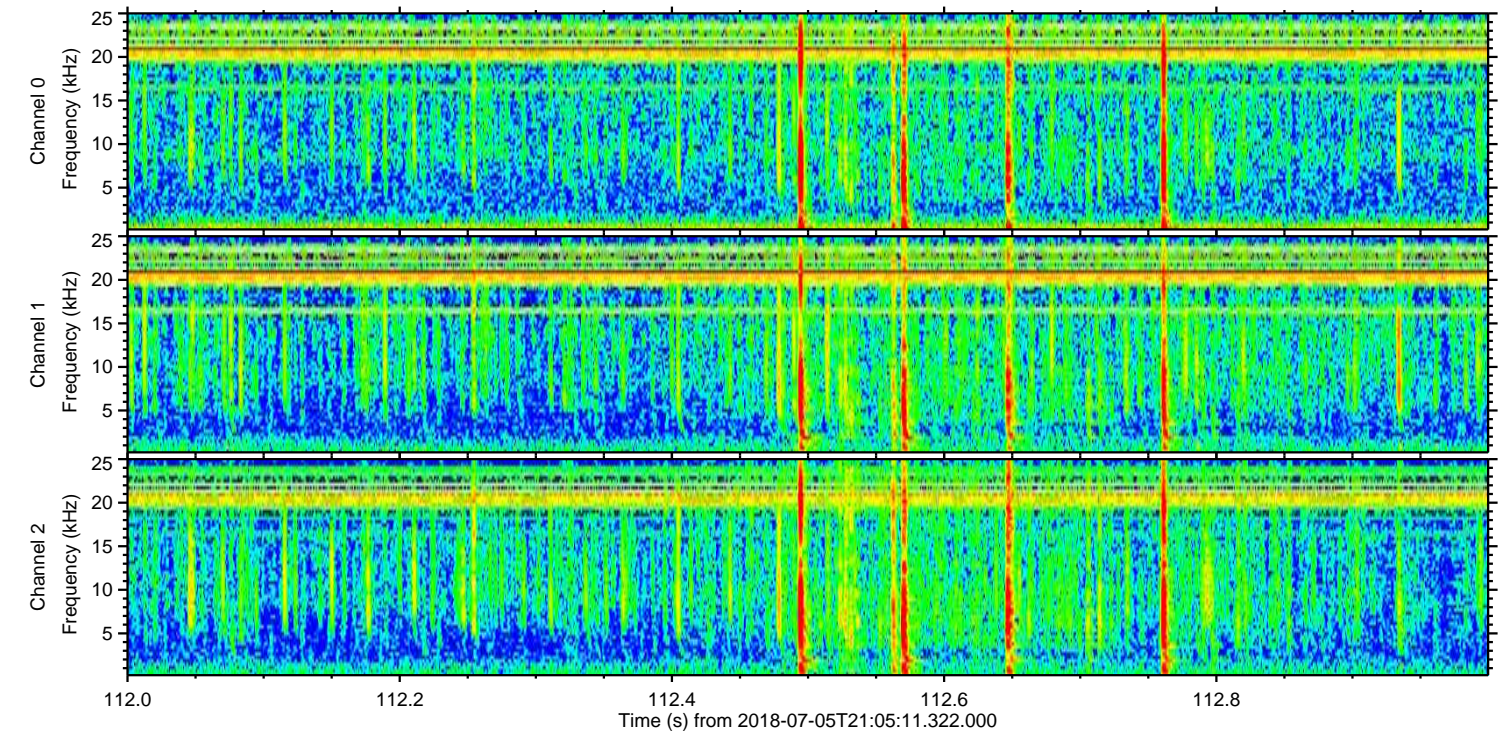
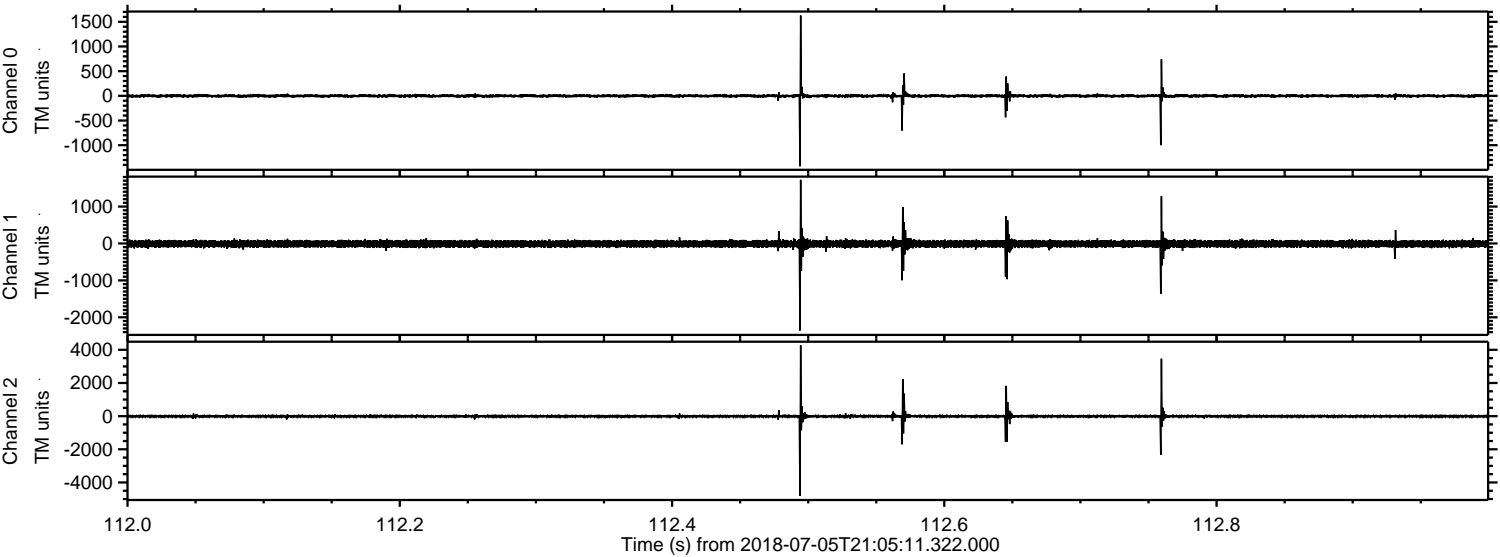


Processed Thu Jul 5 23:12:57 2018 by ELM ver.2012-10-06 from 001__elm20180705_210510__dat00.bin

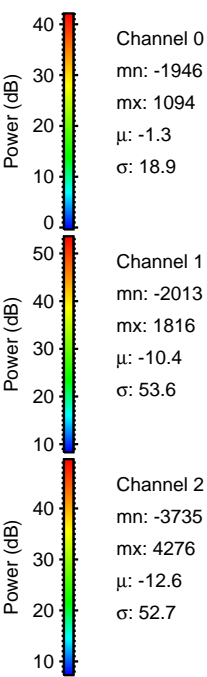
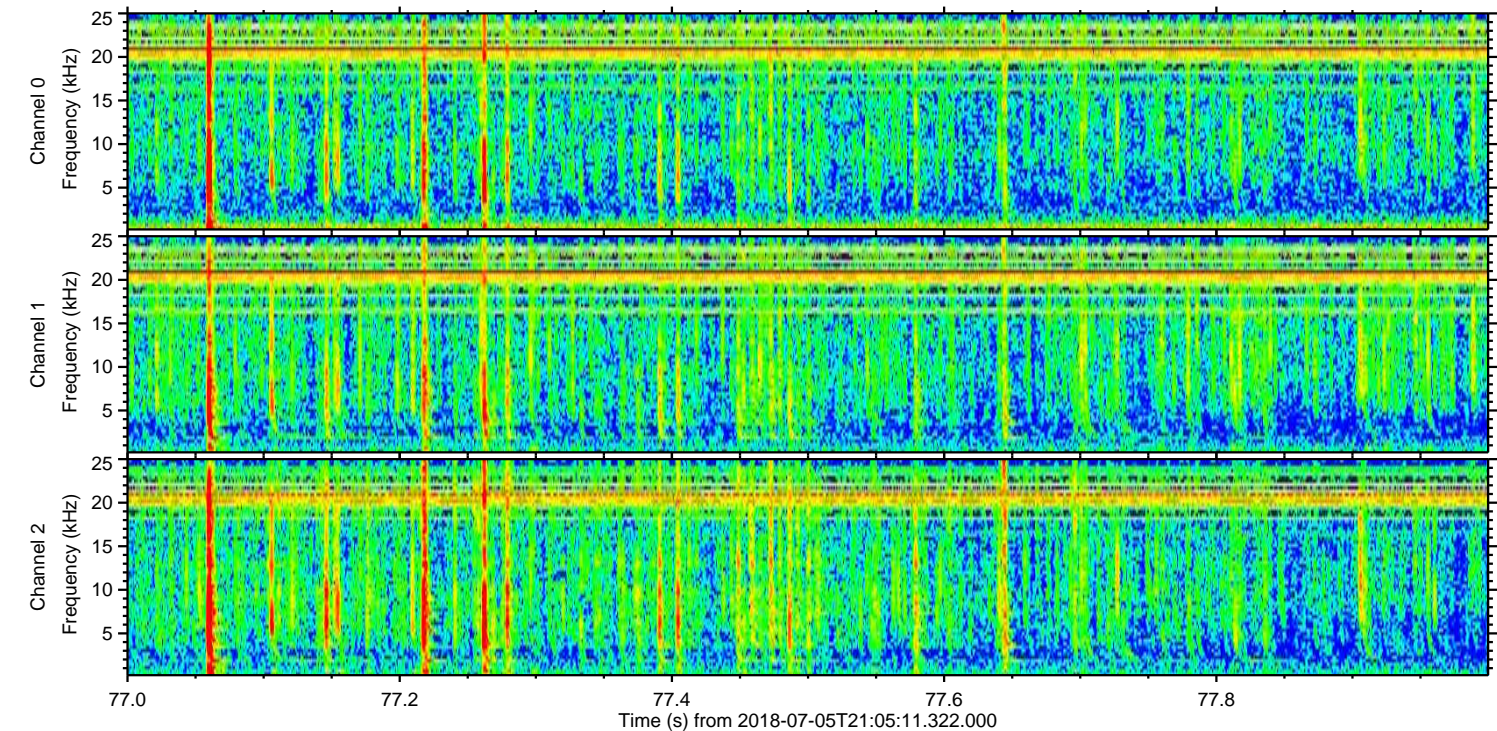
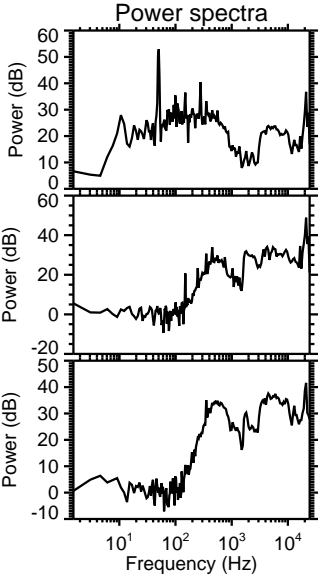
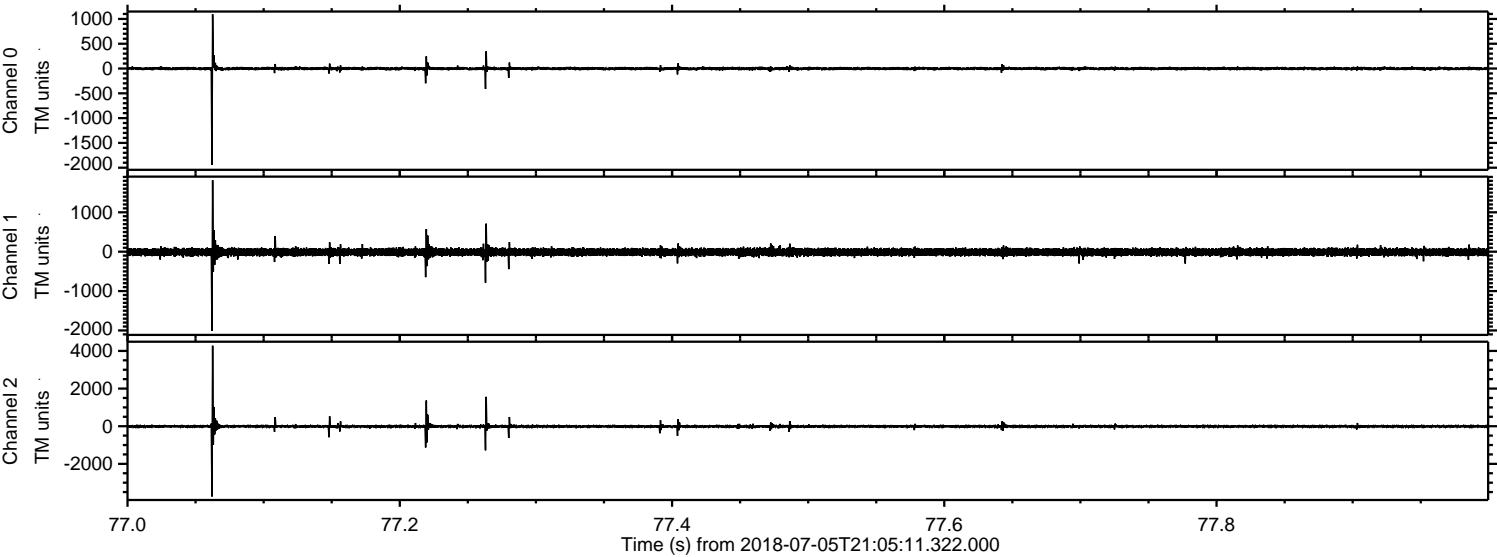


ELMAVAN 3D WAVEFORMS (Measured data sampled at 50 kHz) 51000 packets of 144 samples from 2018-07-05T21:05:11.322.000. Part 113/147

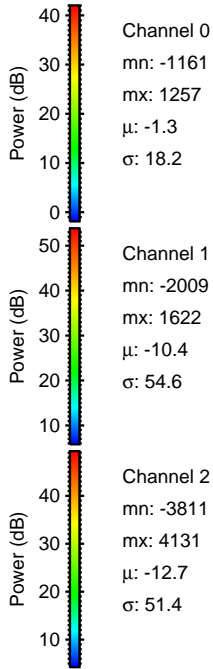
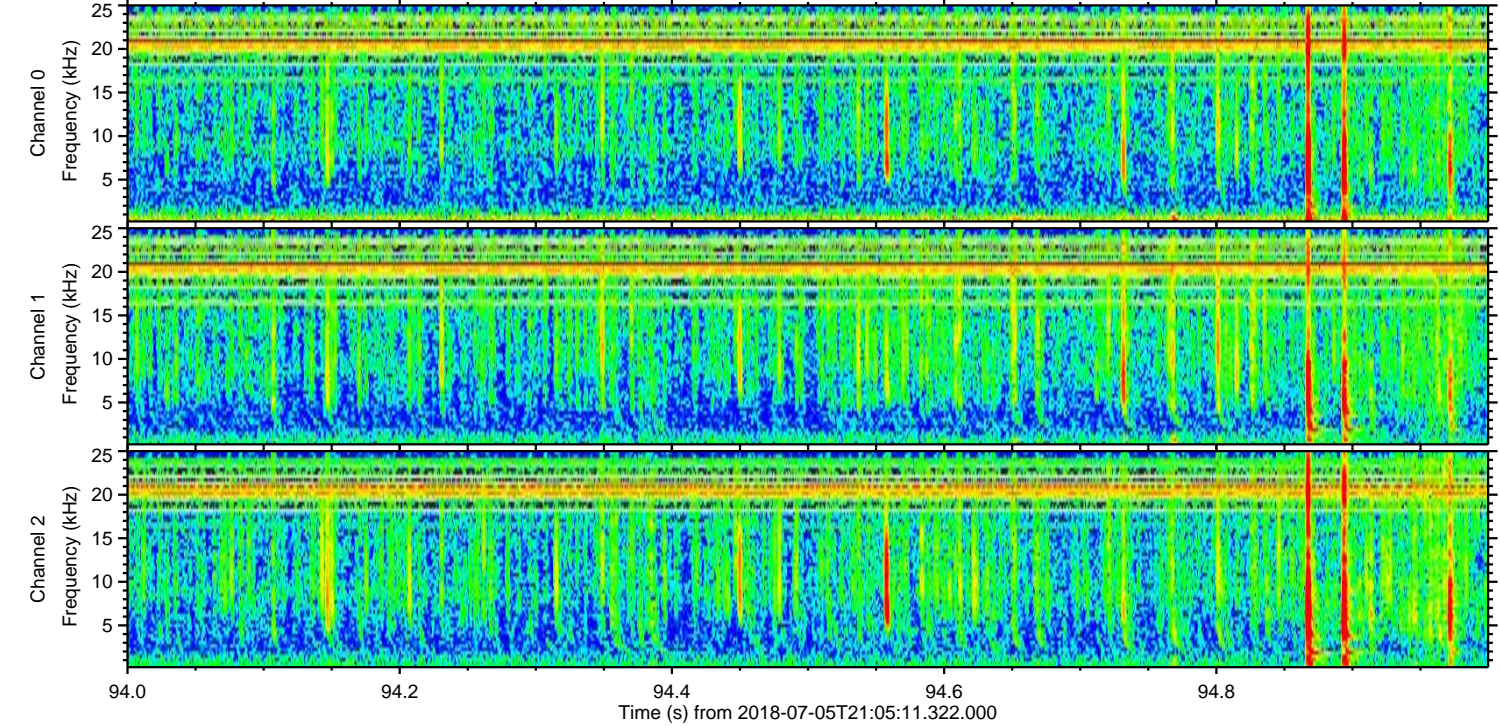
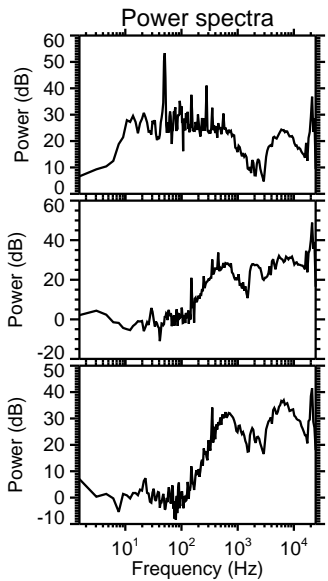
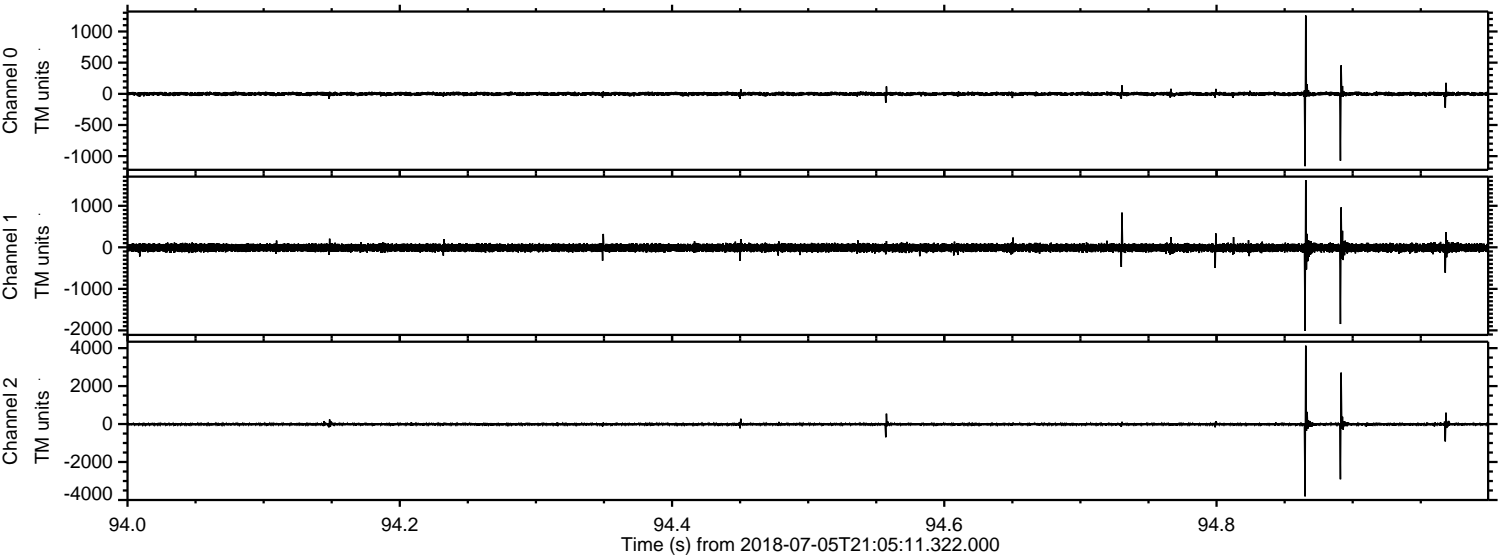
Processed Thu Jul 5 23:12:58 2018 by ELM ver.2012-10-06 from 001__elm20180705_210510__dat00.bin



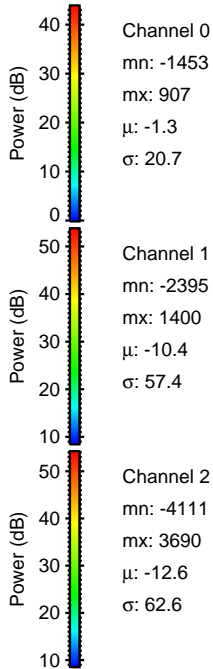
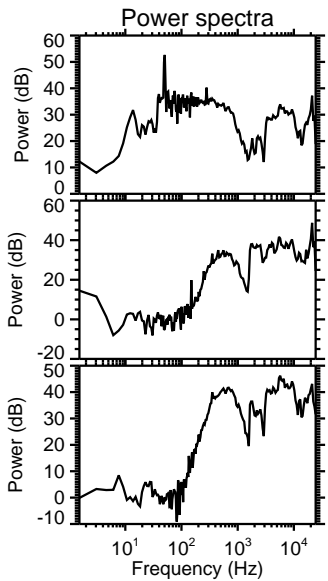
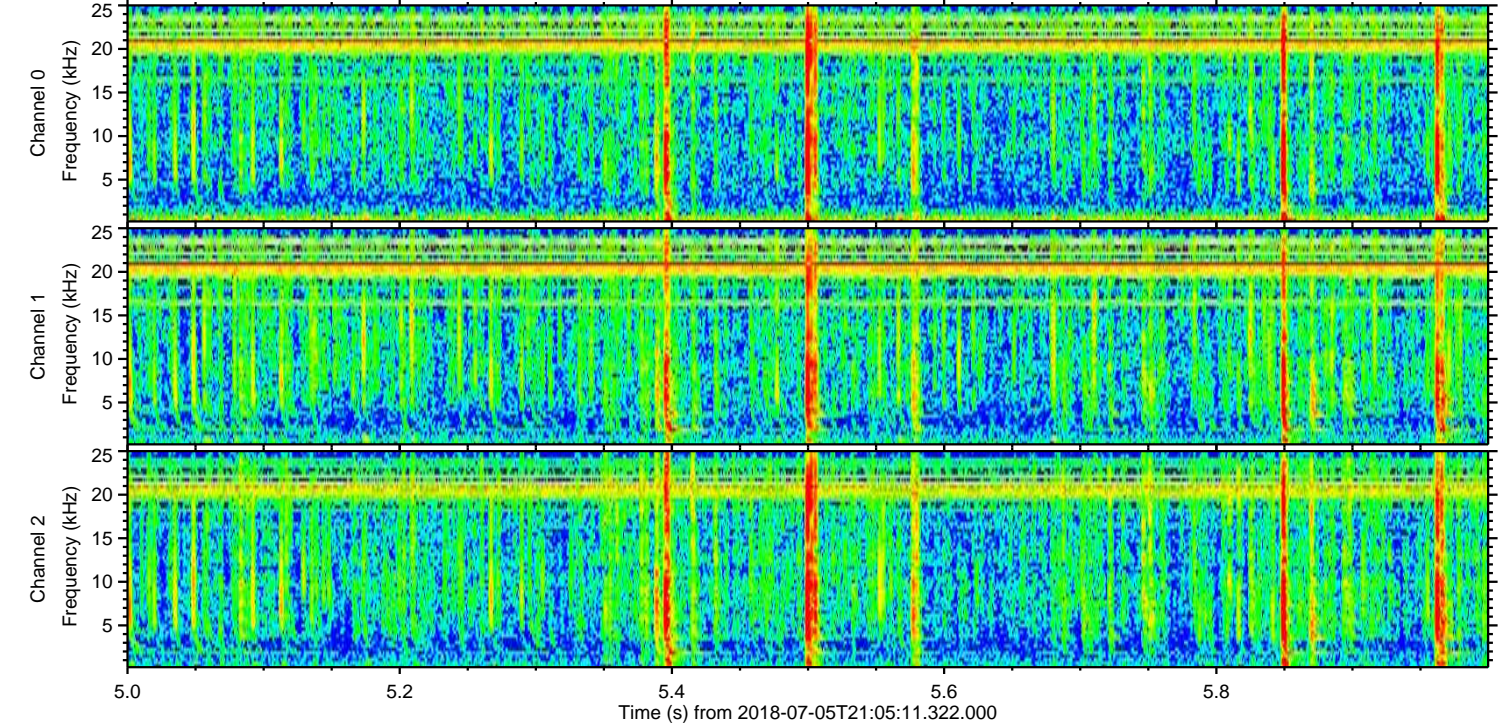
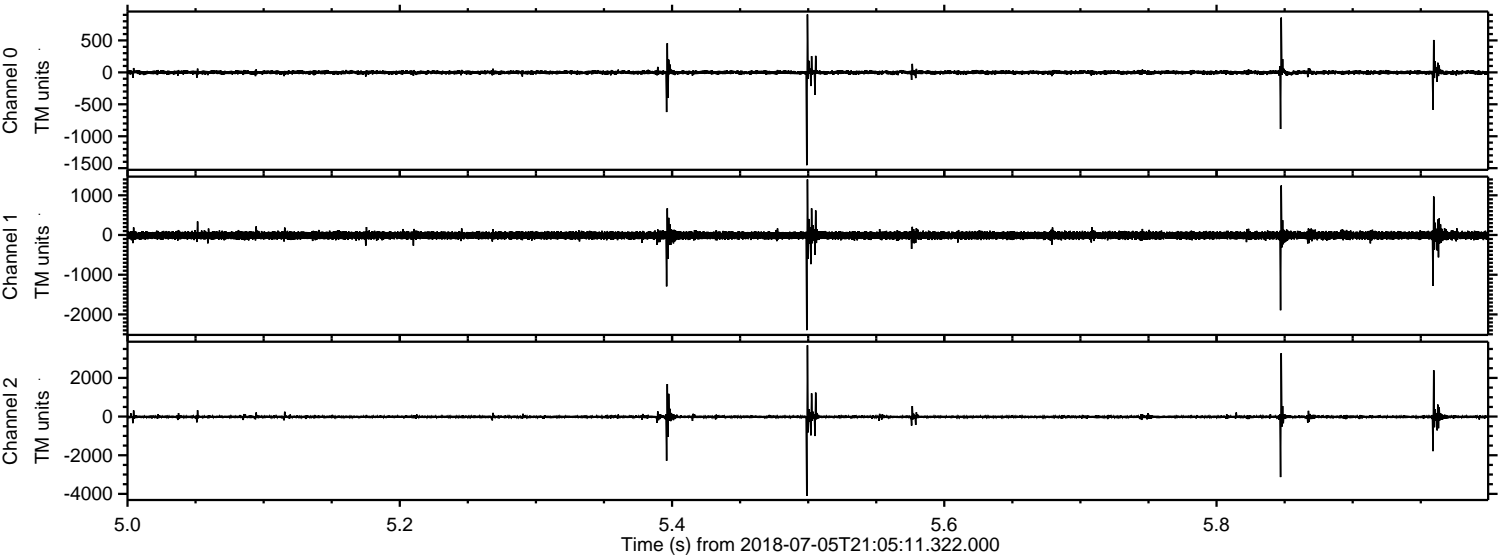
Processed Thu Jul 5 23:12:58 2018 by ELM ver.2012-10-06 from 001__elm20180705_210510__dat00.bin



Processed Thu Jul 5 23:12:59 2018 by ELM ver.2012-10-06 from 001__elm20180705_210510__dat00.bin

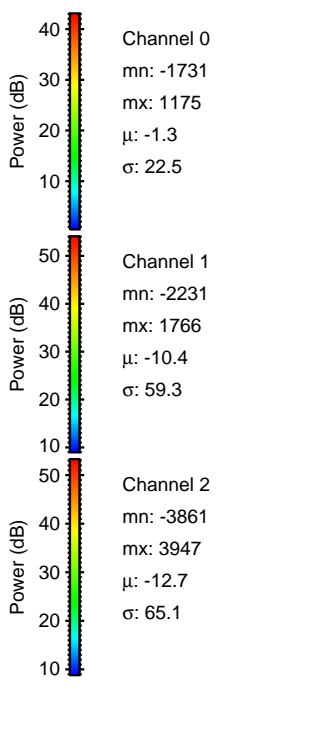
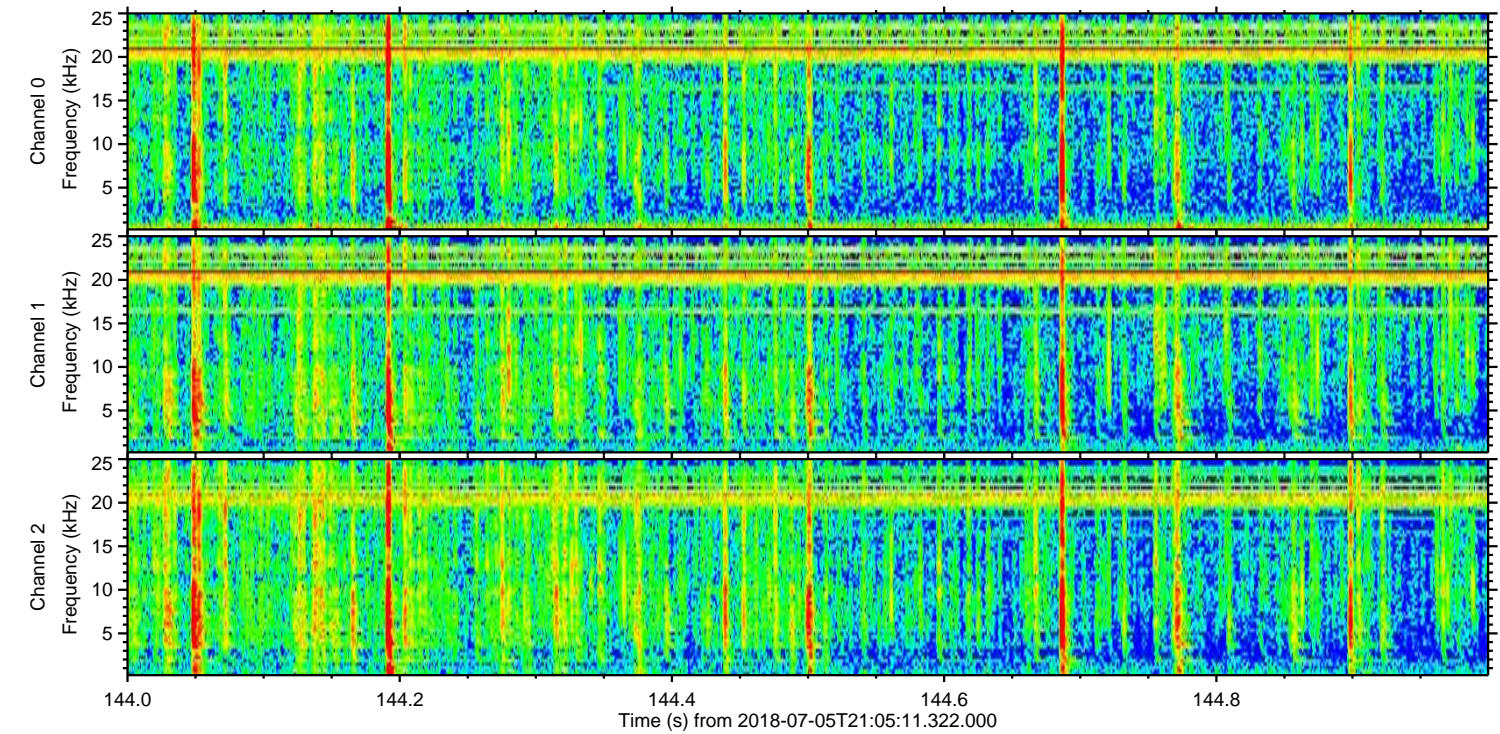
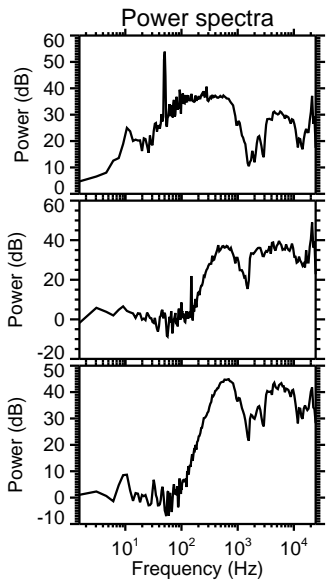
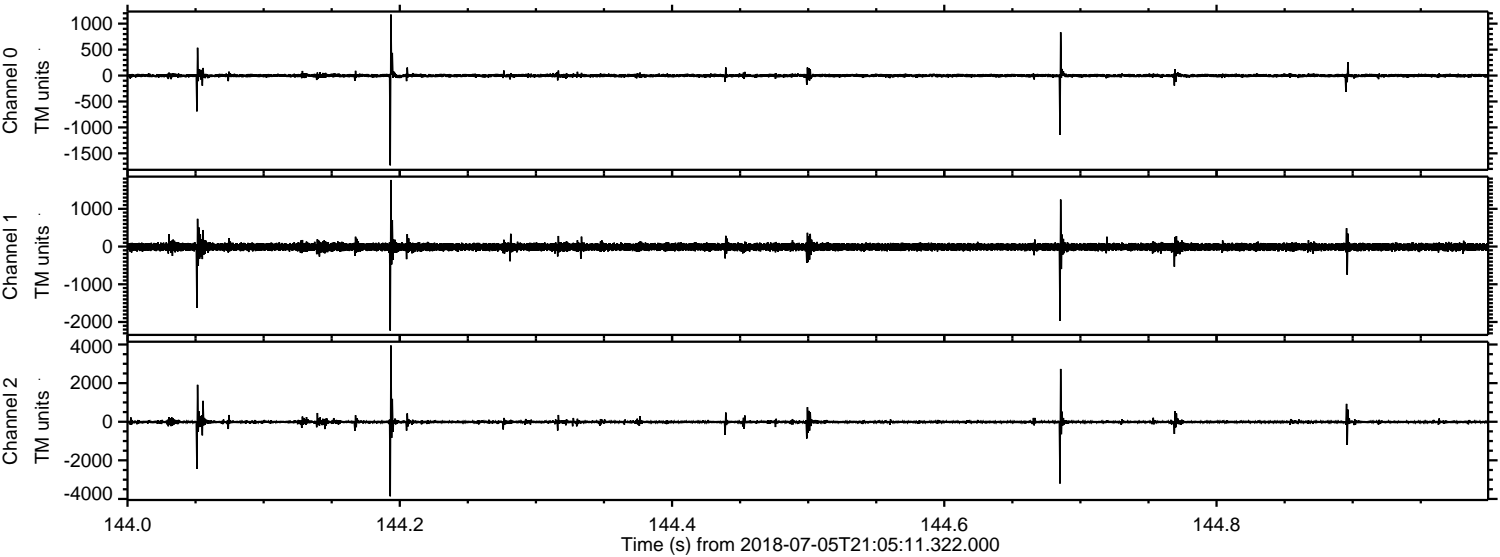


Processed Thu Jul 5 23:13:00 2018 by ELM ver.2012-10-06 from 001__elm20180705_210510__dat00.bin

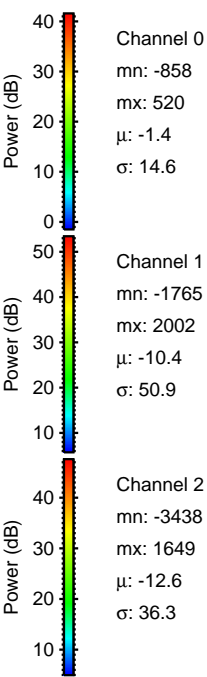
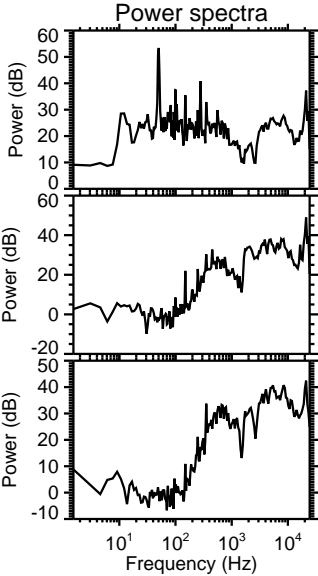
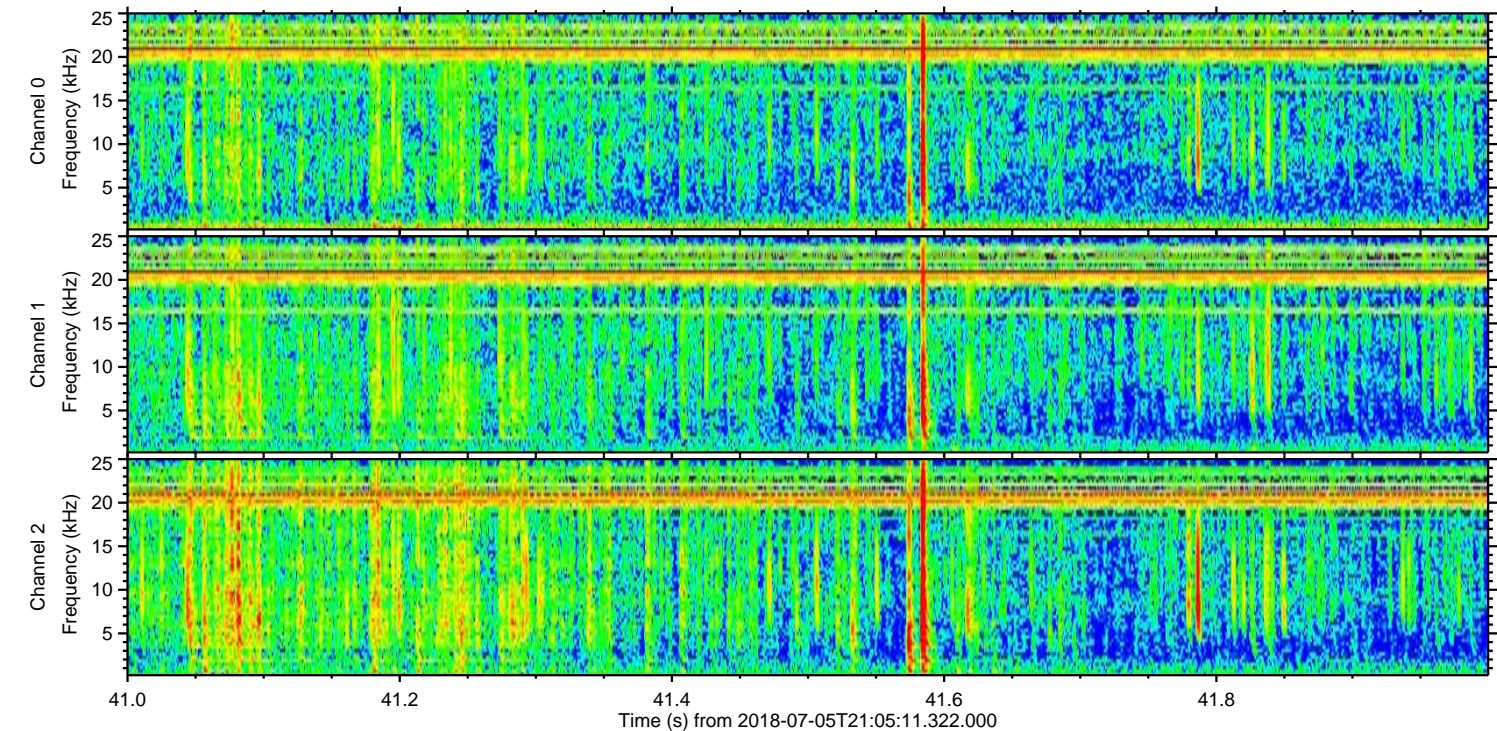
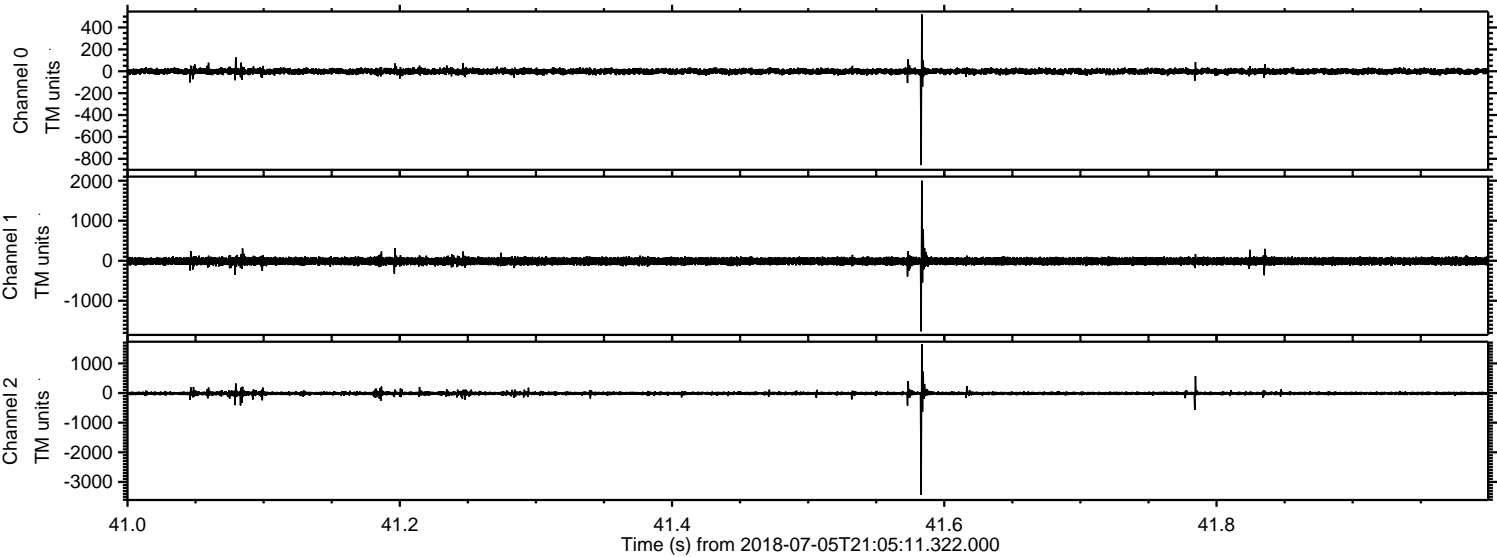


ELMAVAN 3D WAVEFORMS (Measured data sampled at 50 kHz) 51000 packets of 144 samples from 2018-07-05T21:05:11.322.000. Part 145/147

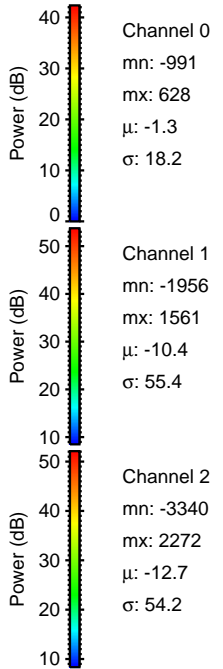
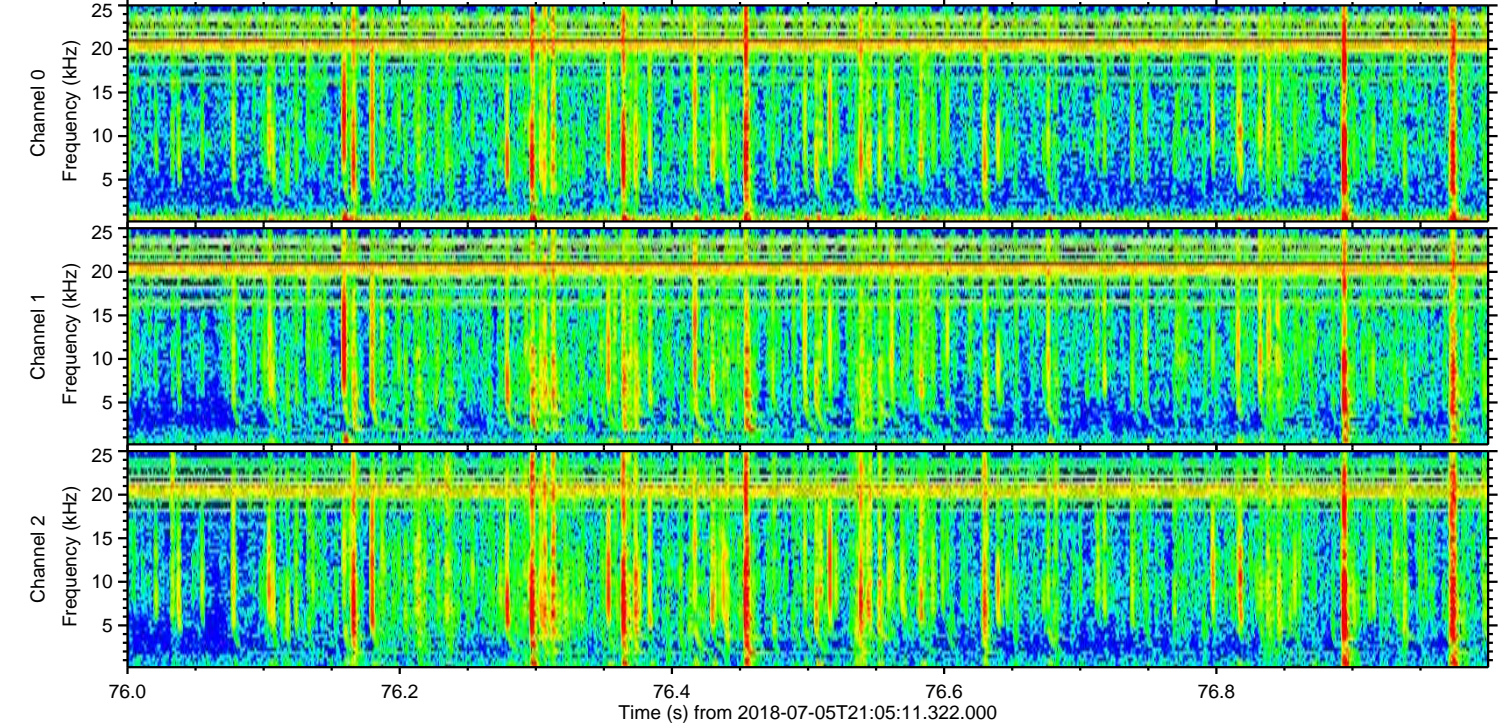
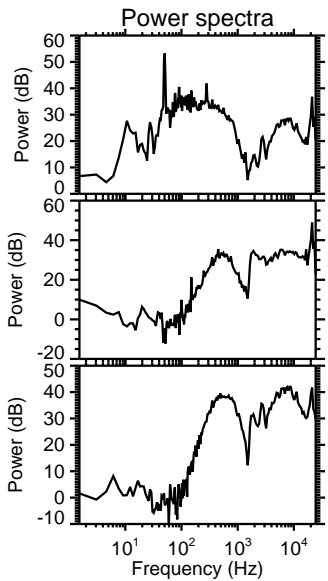
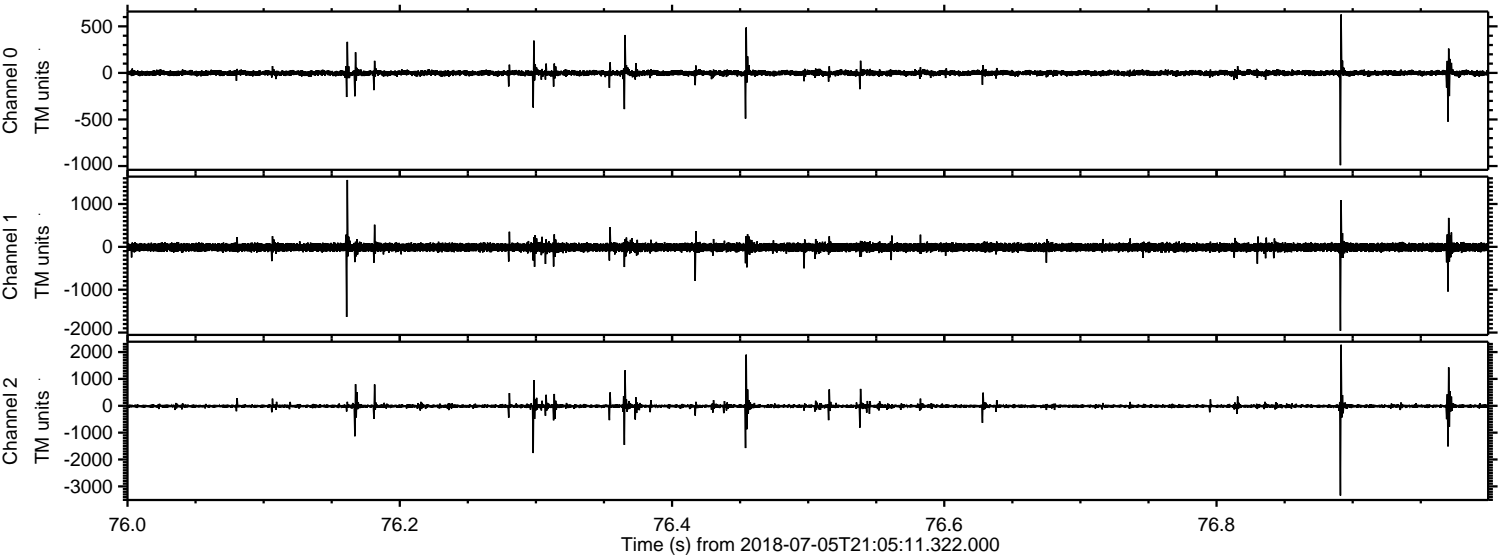
Processed Thu Jul 5 23:13:00 2018 by ELM ver.2012-10-06 from 001__elm20180705_210510__dat00.bin



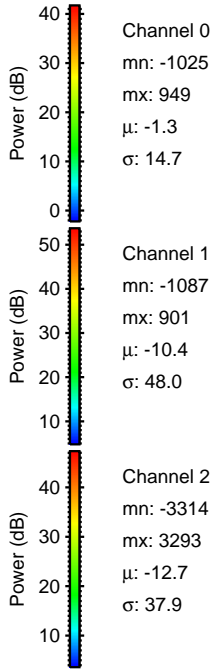
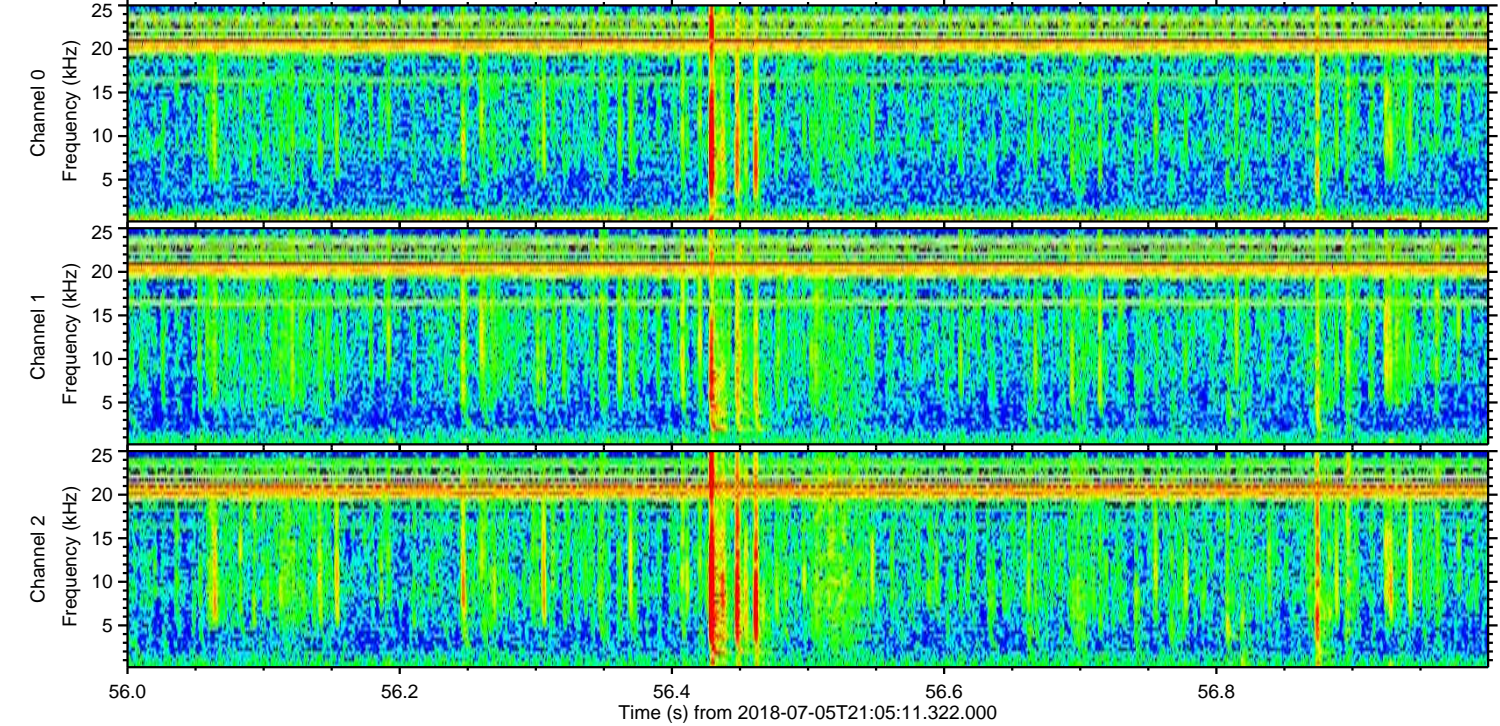
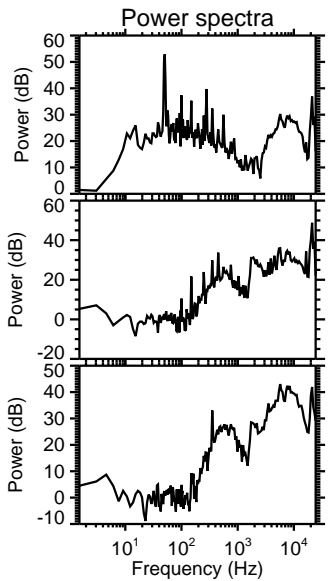
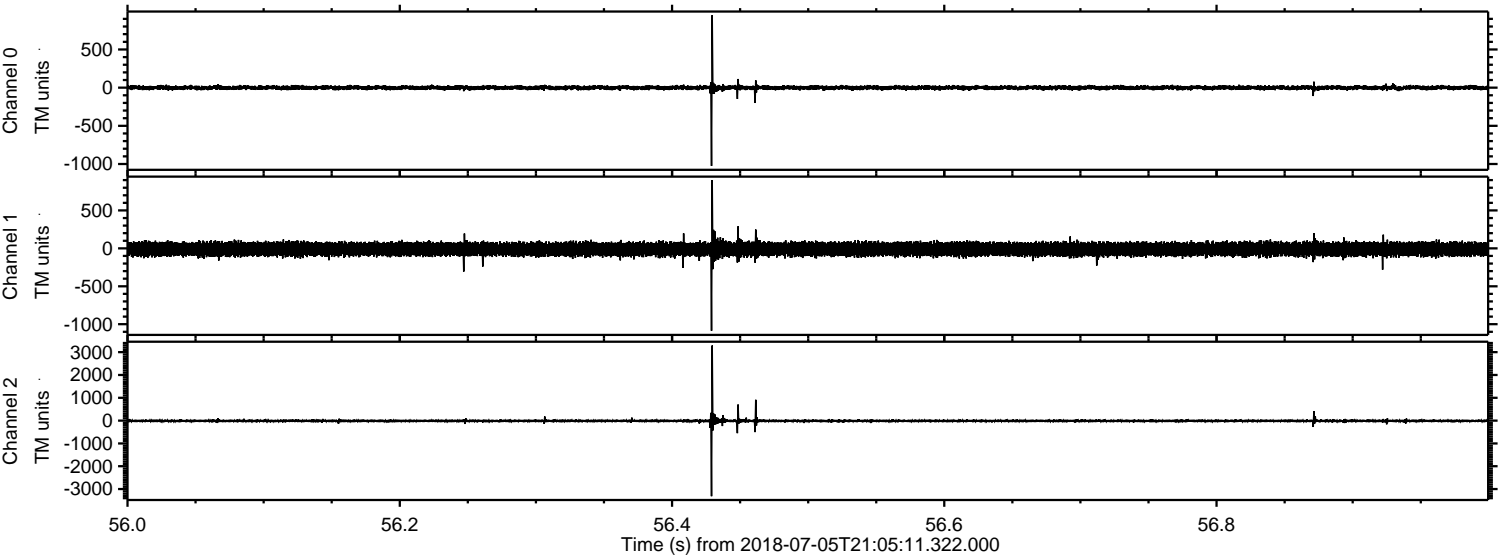
Processed Thu Jul 5 23:13:01 2018 by ELM ver.2012-10-06 from 001__elm20180705_210510__dat00.bin



Processed Thu Jul 5 23:13:02 2018 by ELM ver.2012-10-06 from 001__elm20180705_210510__dat00.bin



Processed Thu Jul 5 23:13:03 2018 by ELM ver.2012-10-06 from 001__elm20180705_210510__dat00.bin



Channel 0
mn: -1025
mx: 949
 μ : -1.3
 σ : 14.7

Channel 1
mn: -1087
mx: 901
 μ : -10.4
 σ : 48.0

Channel 2
mn: -3314
mx: 3293
 μ : -12.7
 σ : 37.9

