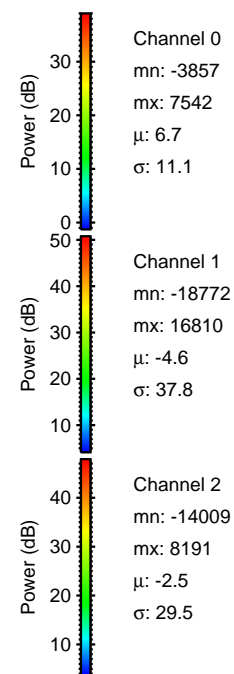
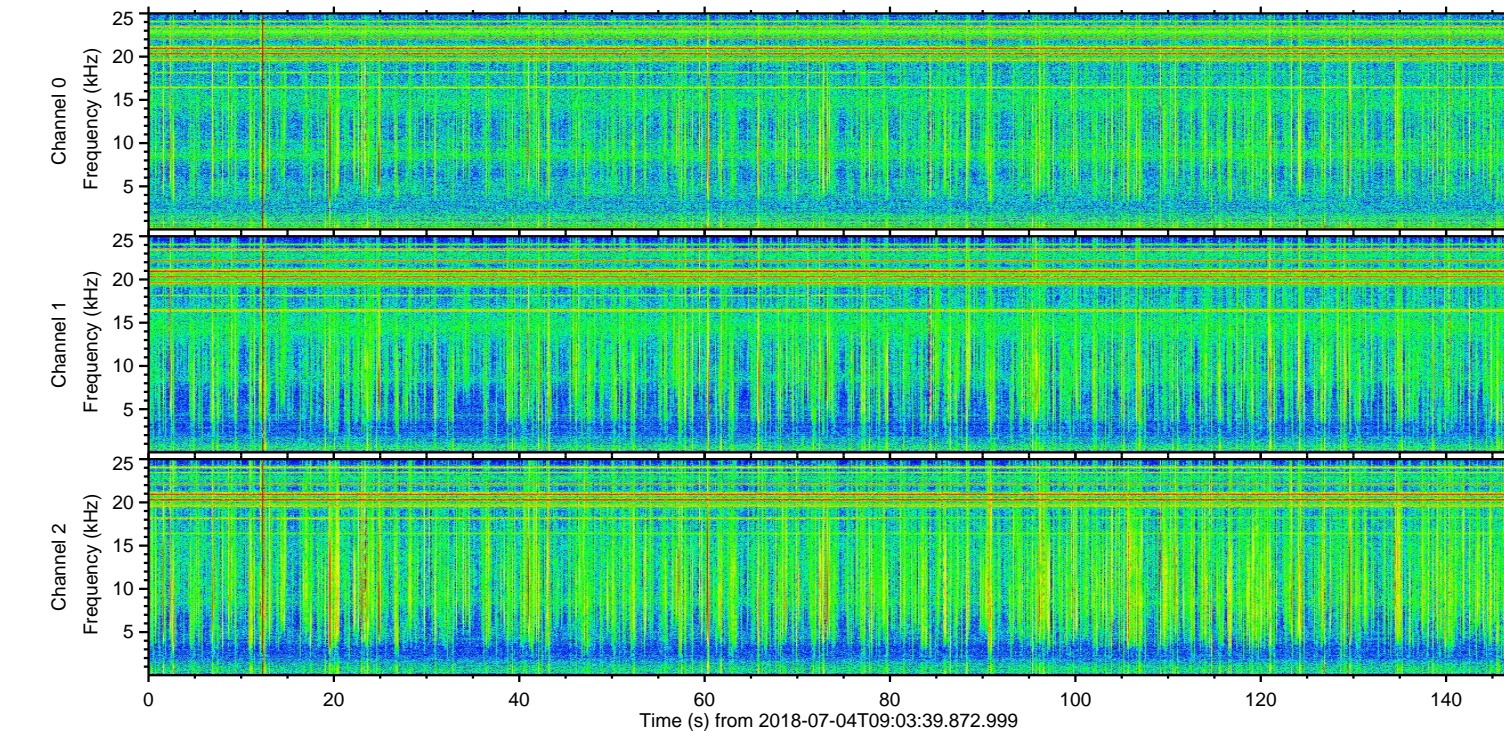
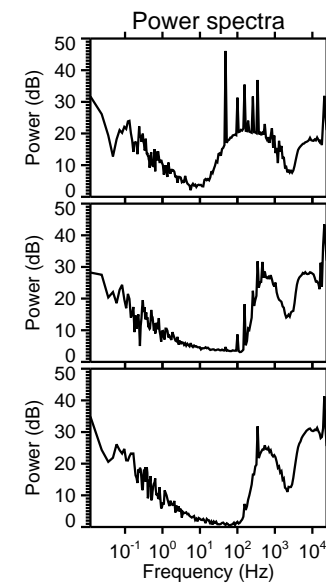
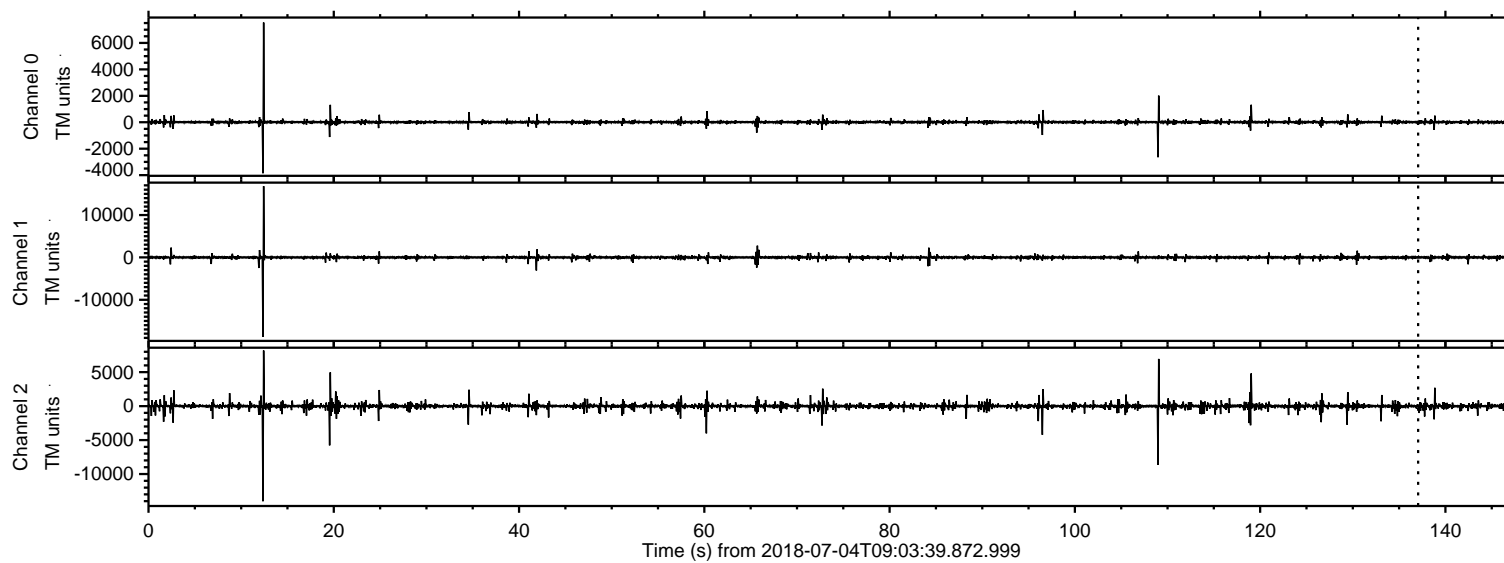


ELMAVAN 3D WAVEFORMS (Measured data sampled at 50 kHz) 50999 packets of 144 samples from 2018-07-04T09:03:39.872.999.

Processed Wed Jul 4 11:11:22 2018 by ELM ver.2012-10-06 from 001__elm20180704_090338__dat00.bin

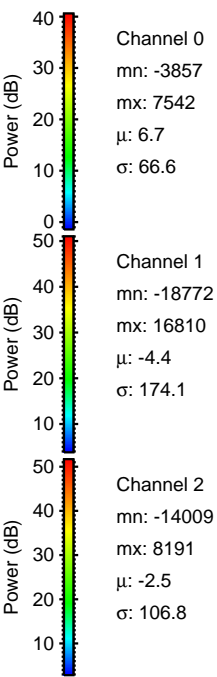
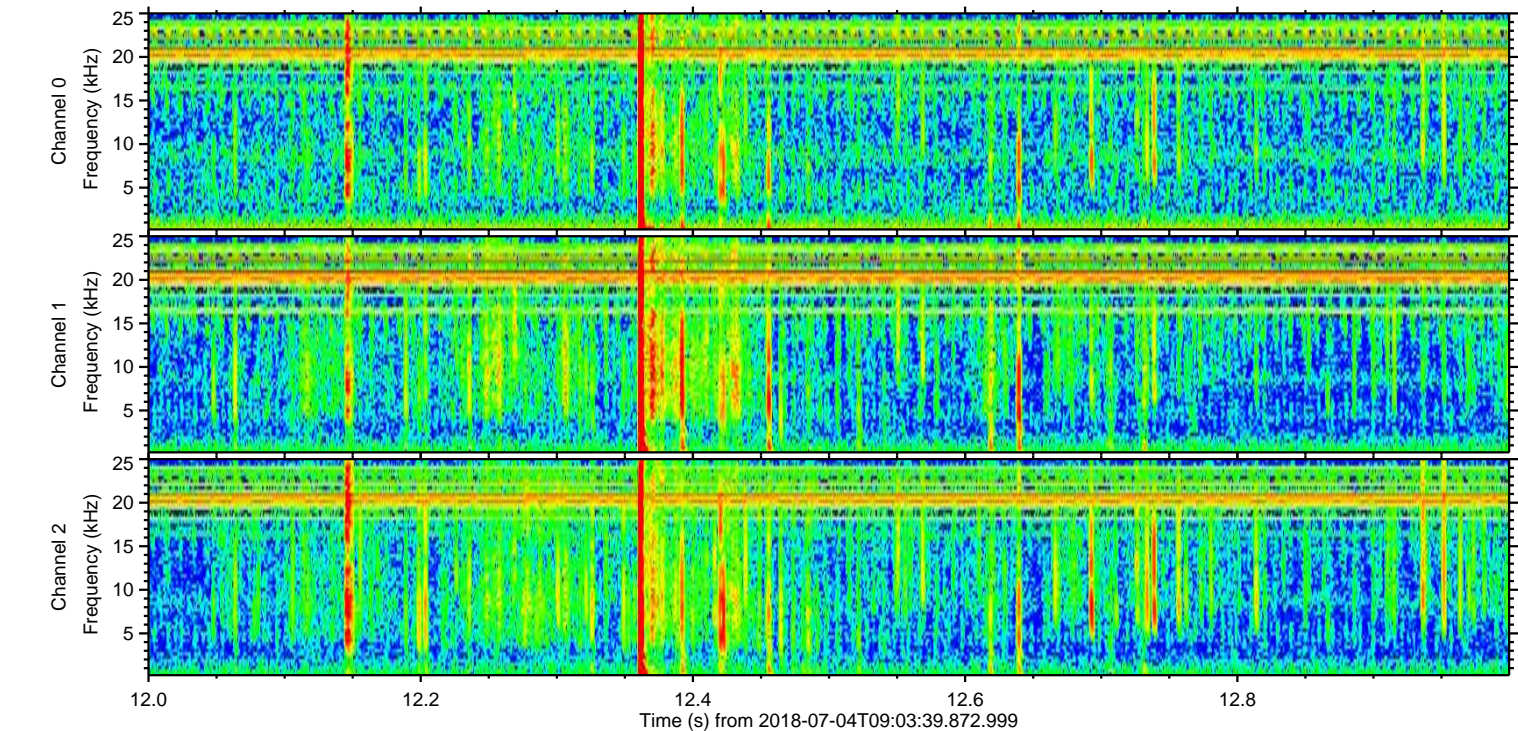
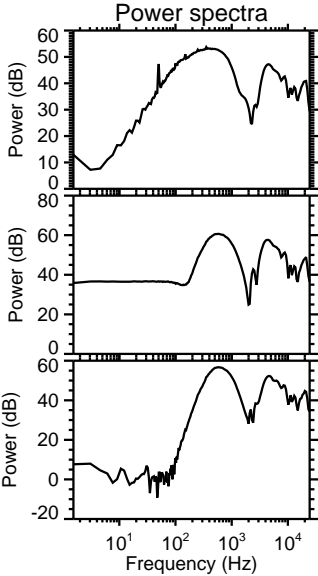
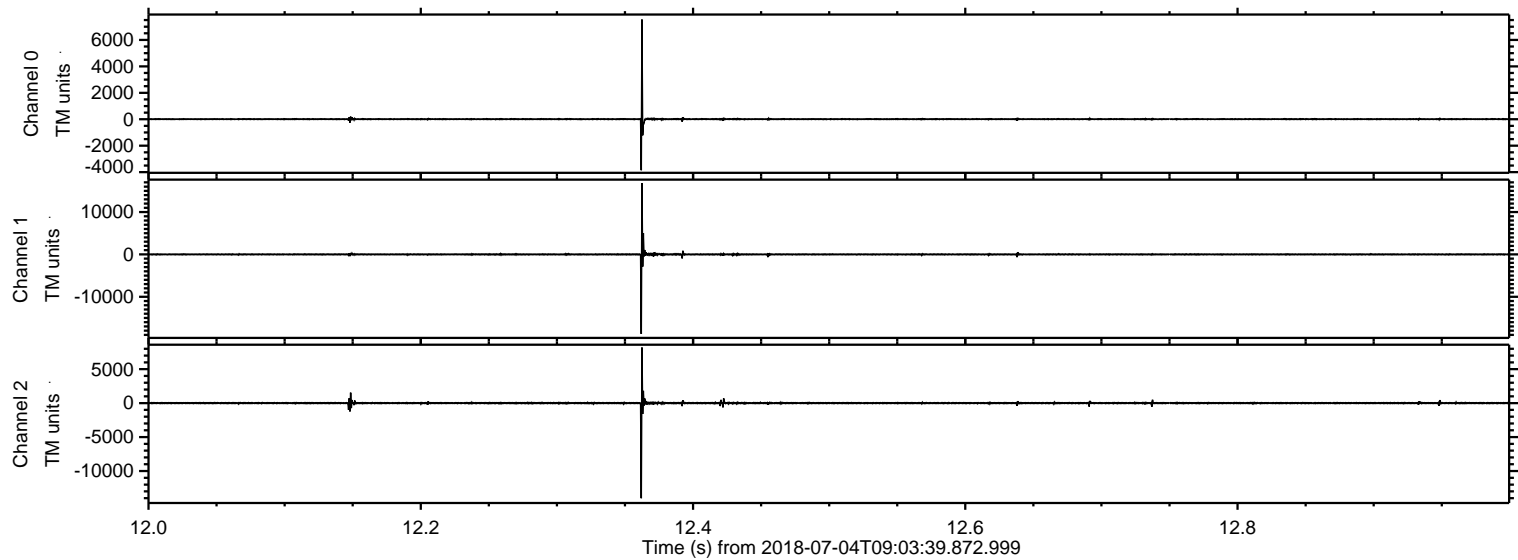


Channel 0
mn: -3857
mx: 7542
 μ : 6.7
 σ : 11.1

Channel 1
mn: -18772
mx: 16810
 μ : -4.6
 σ : 37.8

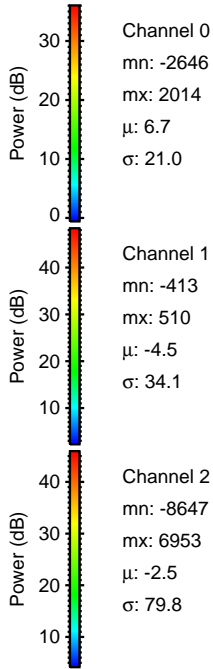
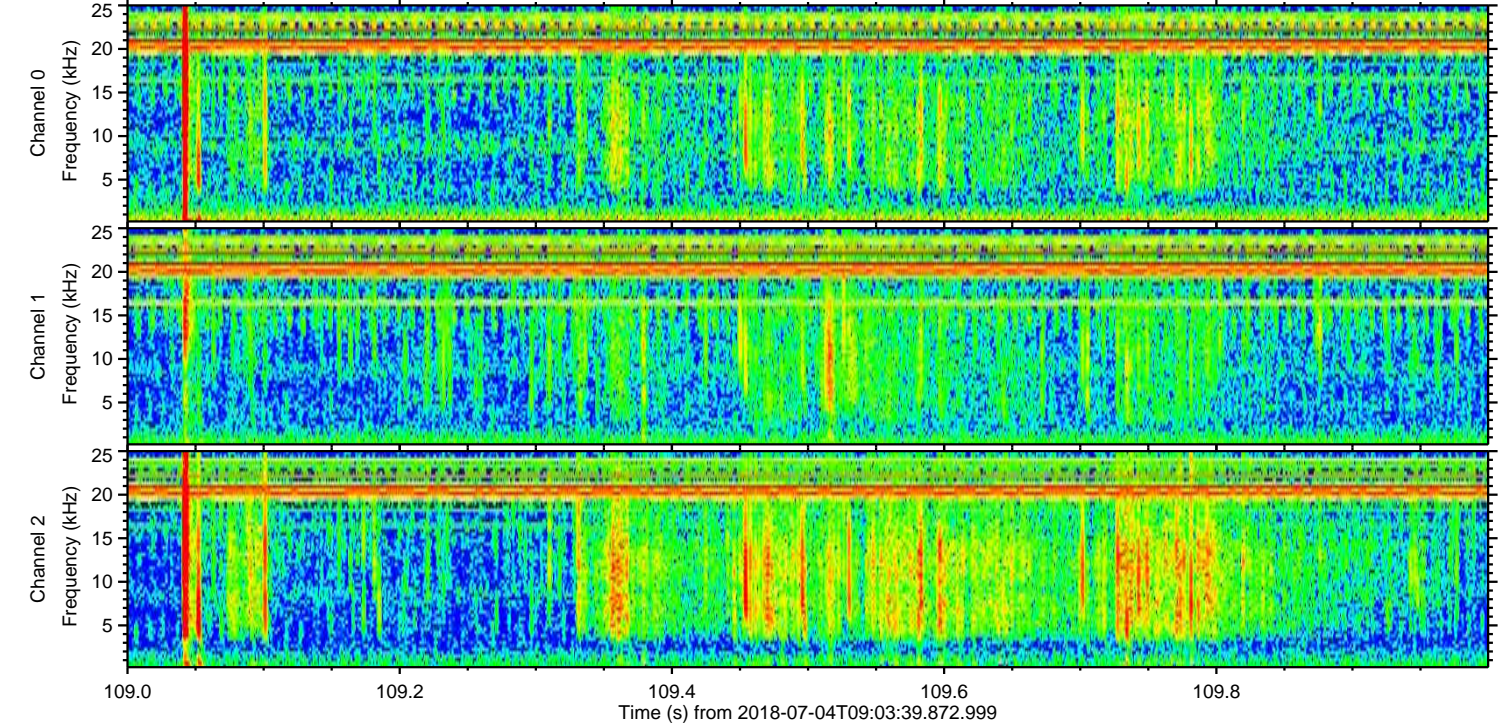
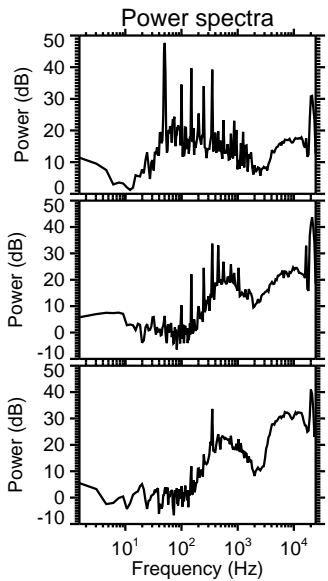
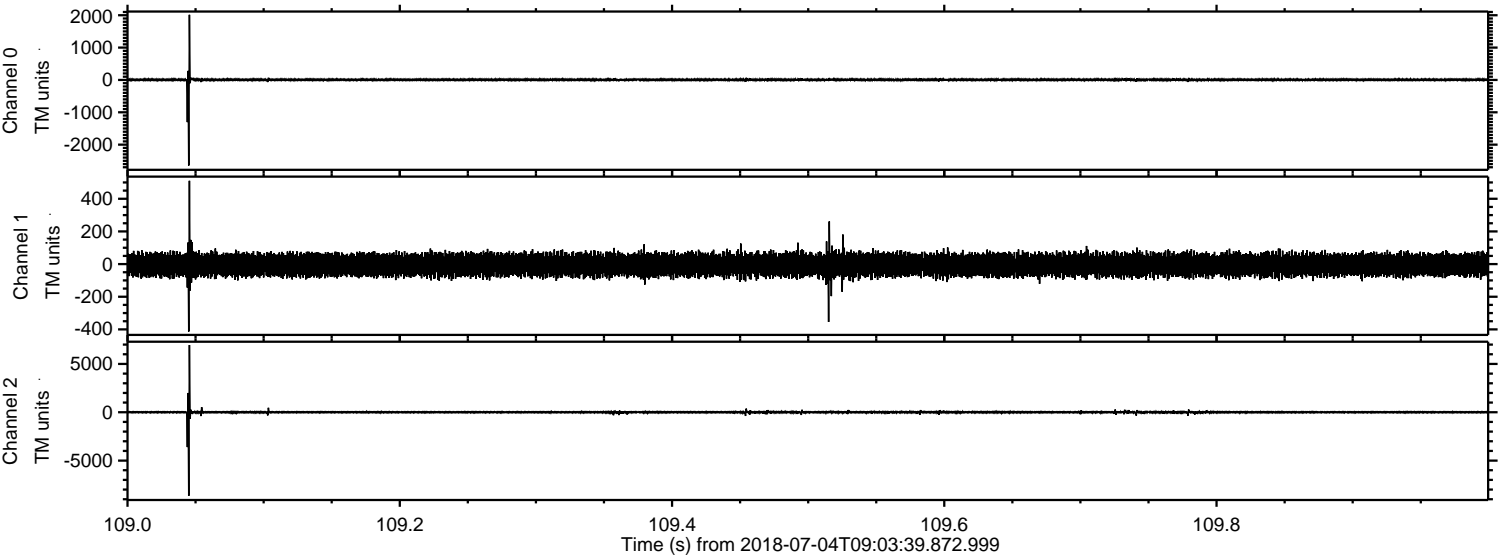
Channel 2
mn: -14009
mx: 8191
 μ : -2.5
 σ : 29.5

Processed Wed Jul 4 11:11:30 2018 by ELM ver.2012-10-06 from 001__elm20180704_090338__dat00.bin



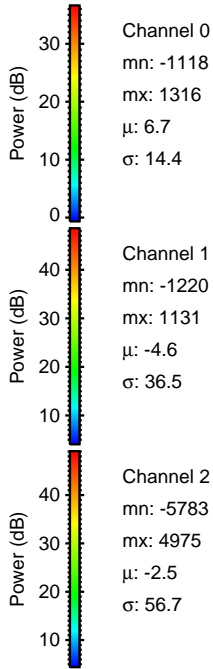
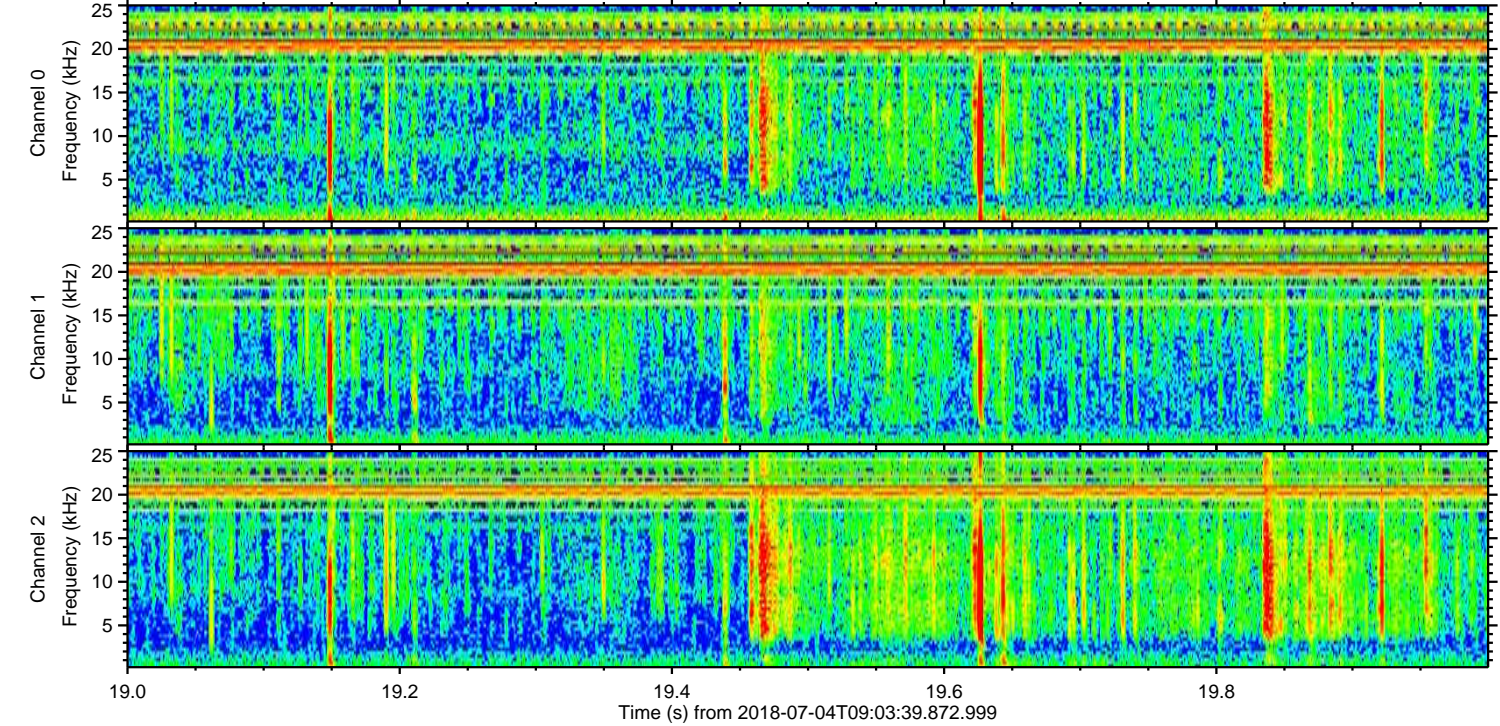
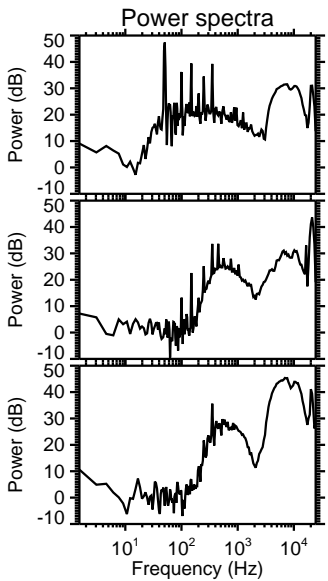
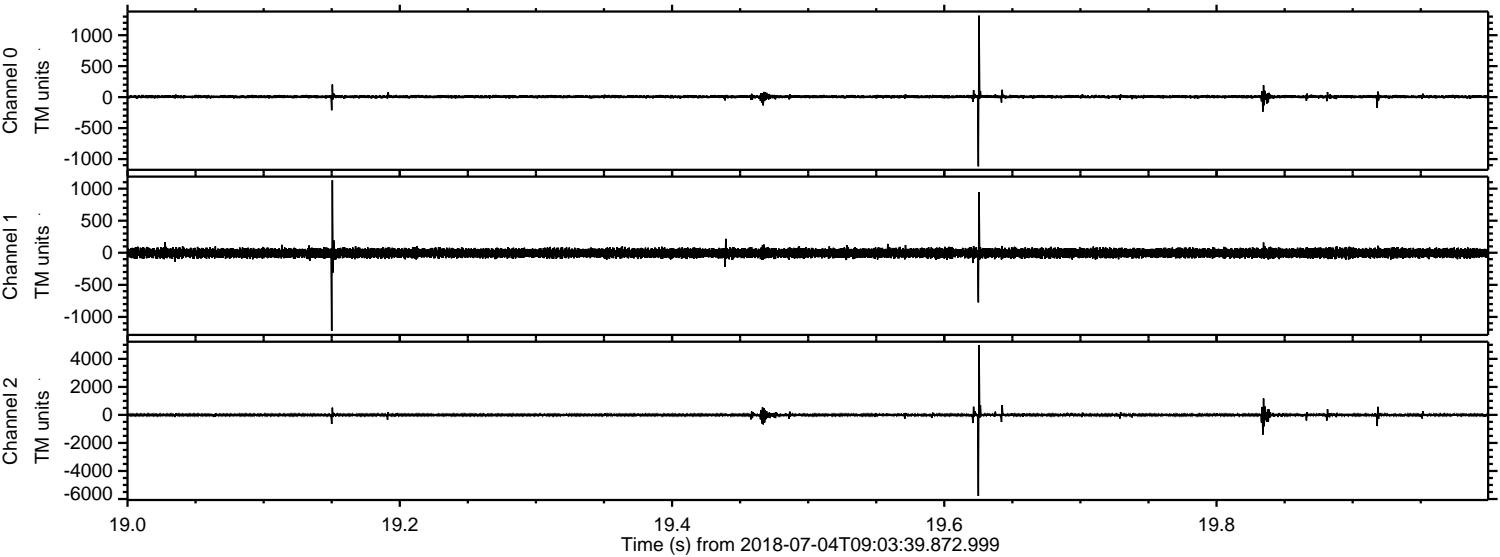
ELMAVAN 3D WAVEFORMS (Measured data sampled at 50 kHz) 50999 packets of 144 samples from 2018-07-04T09:03:39.872.999. Part 110/147

Processed Wed Jul 4 11:11:31 2018 by ELM ver.2012-10-06 from 001__elm20180704_090338__dat00.bin



ELMAVAN 3D WAVEFORMS (Measured data sampled at 50 kHz) 50999 packets of 144 samples from 2018-07-04T09:03:39.872.999. Part 20/147

Processed Wed Jul 4 11:11:31 2018 by ELM ver.2012-10-06 from 001__elm20180704_090338__dat00.bin



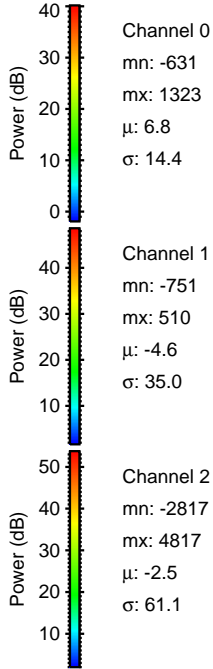
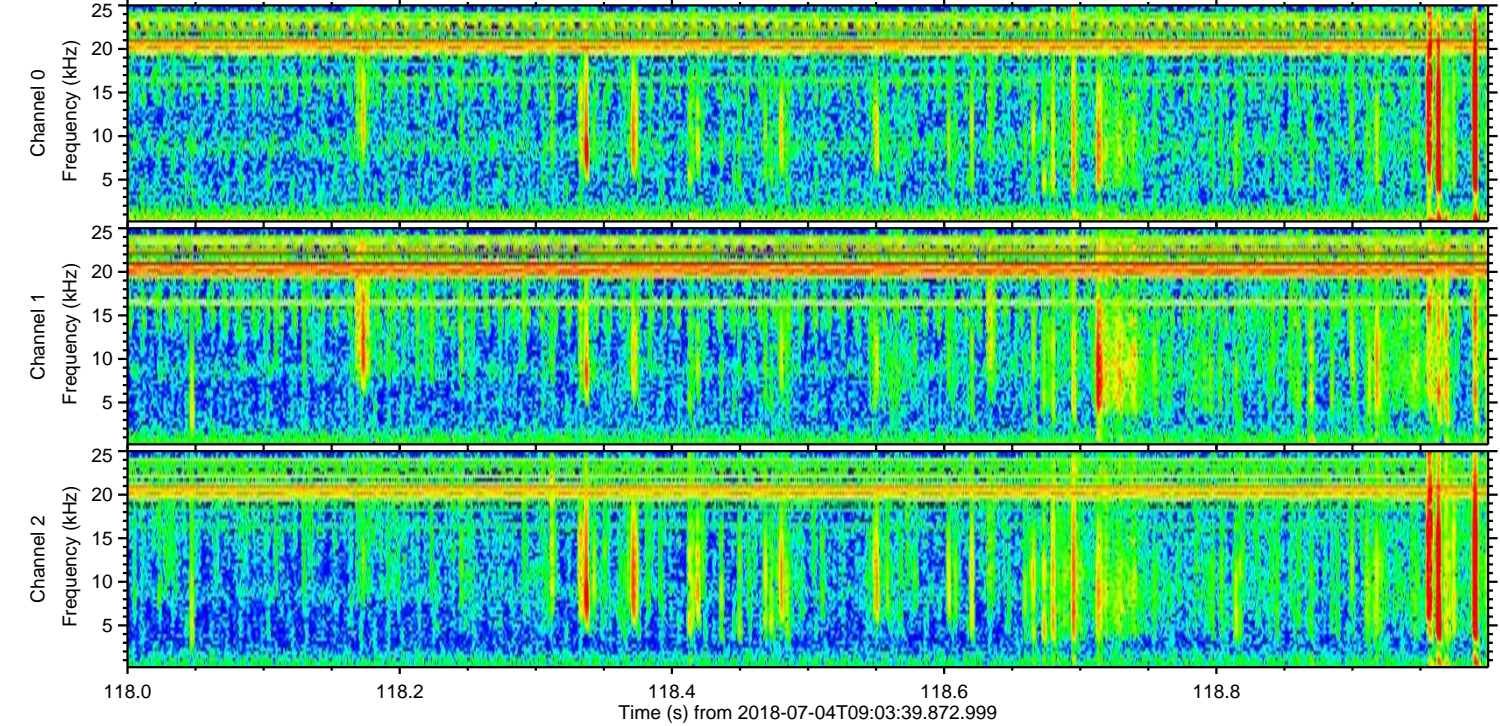
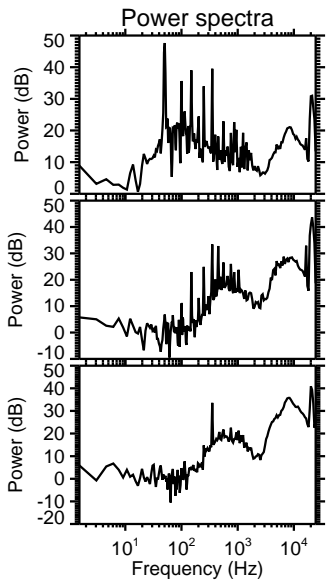
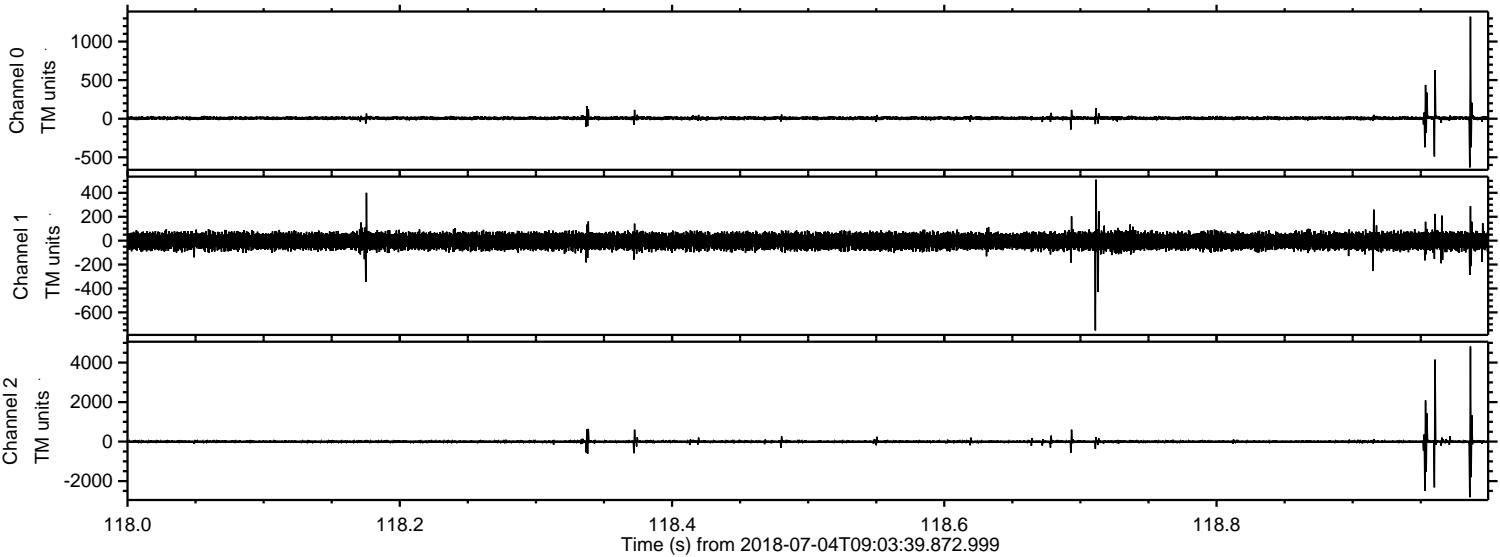
Channel 0
mn: -1118
mx: 1316
 μ : 6.7
 σ : 14.4

Channel 1
mn: -1220
mx: 1131
 μ : -4.6
 σ : 36.5

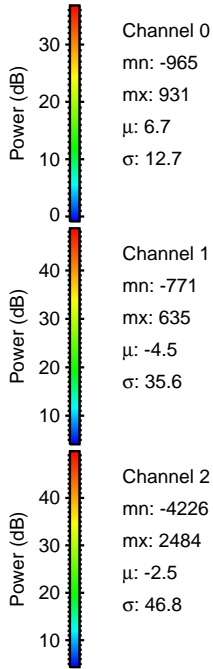
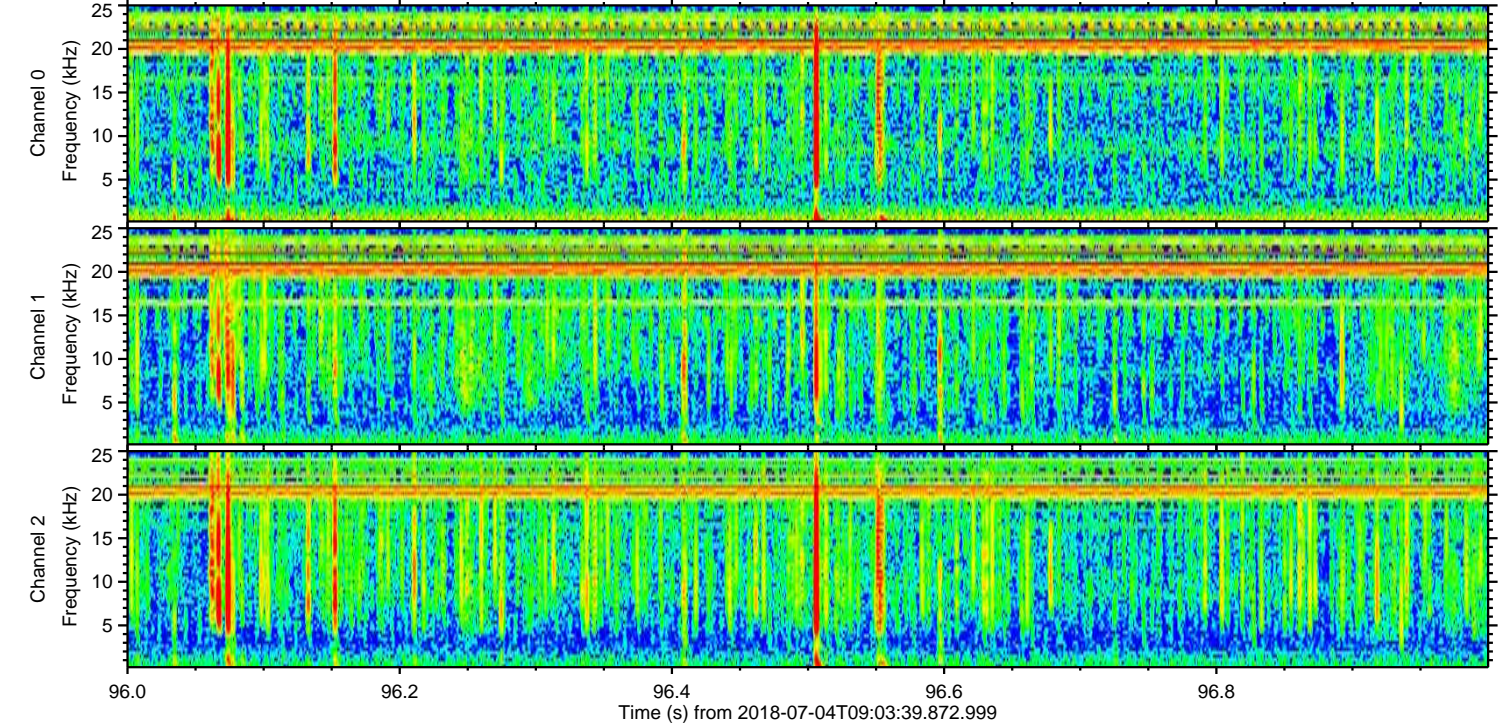
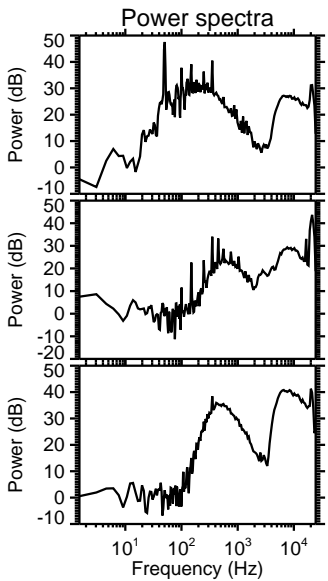
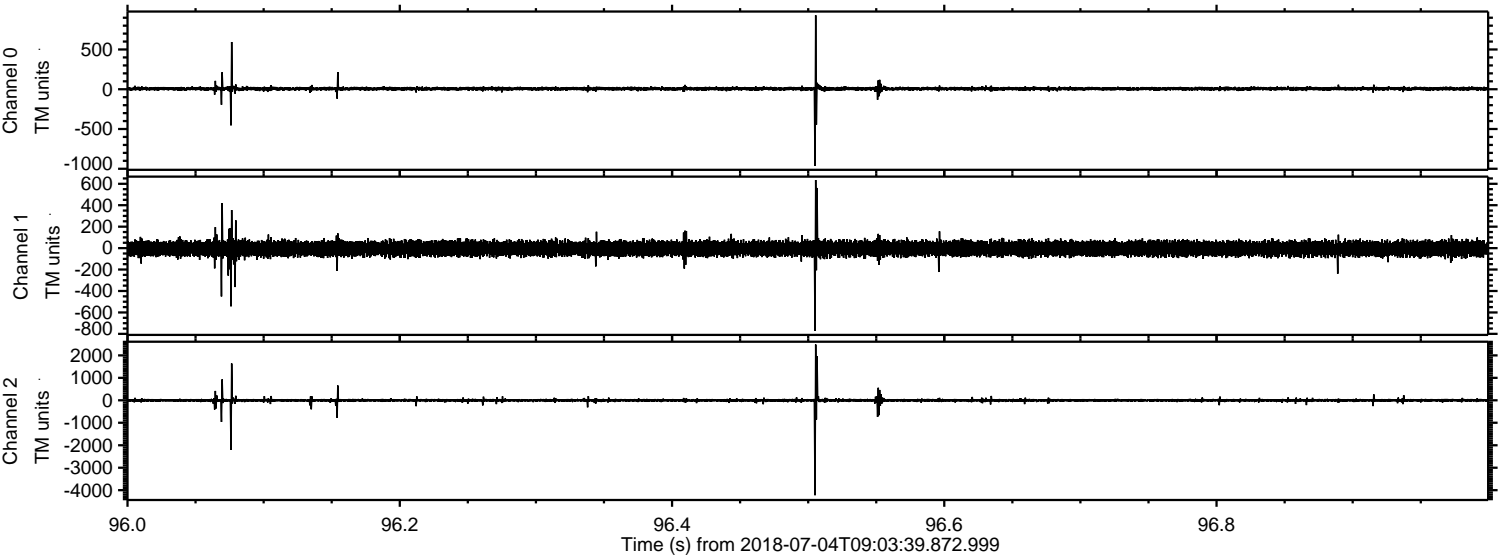
Channel 2
mn: -5783
mx: 4975
 μ : -2.5
 σ : 56.7

ELMAVAN 3D WAVEFORMS (Measured data sampled at 50 kHz) 50999 packets of 144 samples from 2018-07-04T09:03:39.872.999. Part 119/147

Processed Wed Jul 4 11:11:33 2018 by ELM ver.2012-10-06 from 001__elm20180704_090338__dat00.bin



Processed Wed Jul 4 11:11:33 2018 by ELM ver.2012-10-06 from 001__elm20180704_090338__dat00.bin

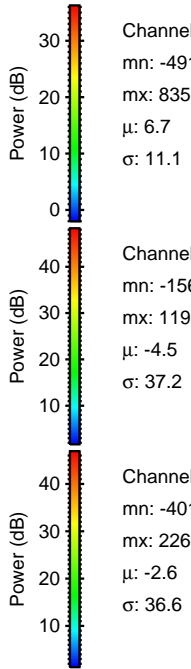
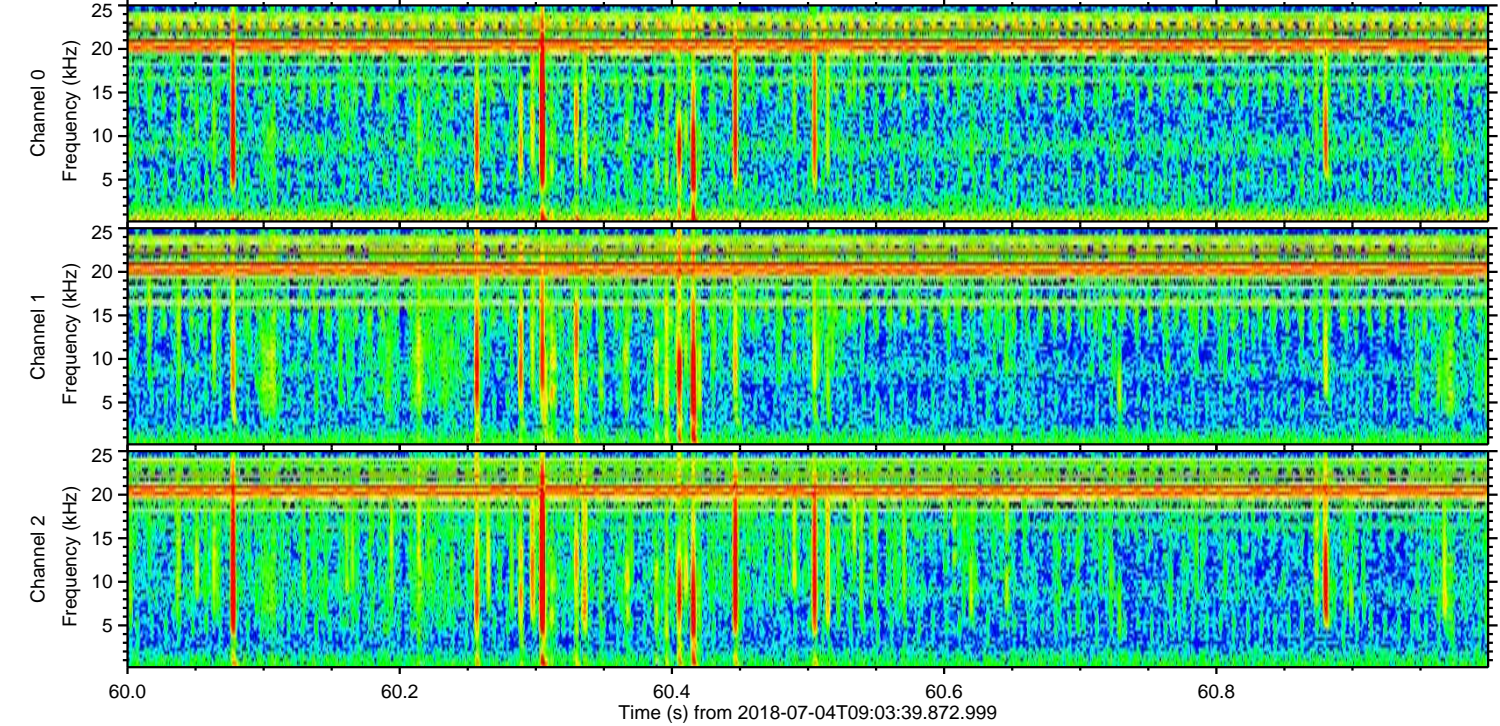
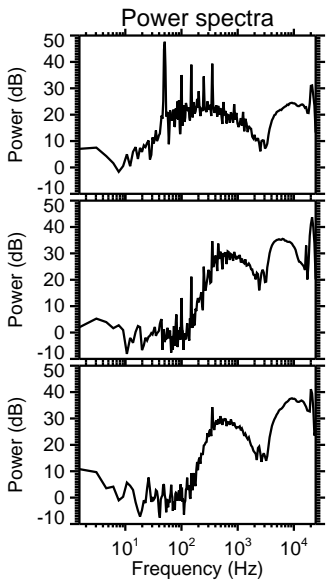
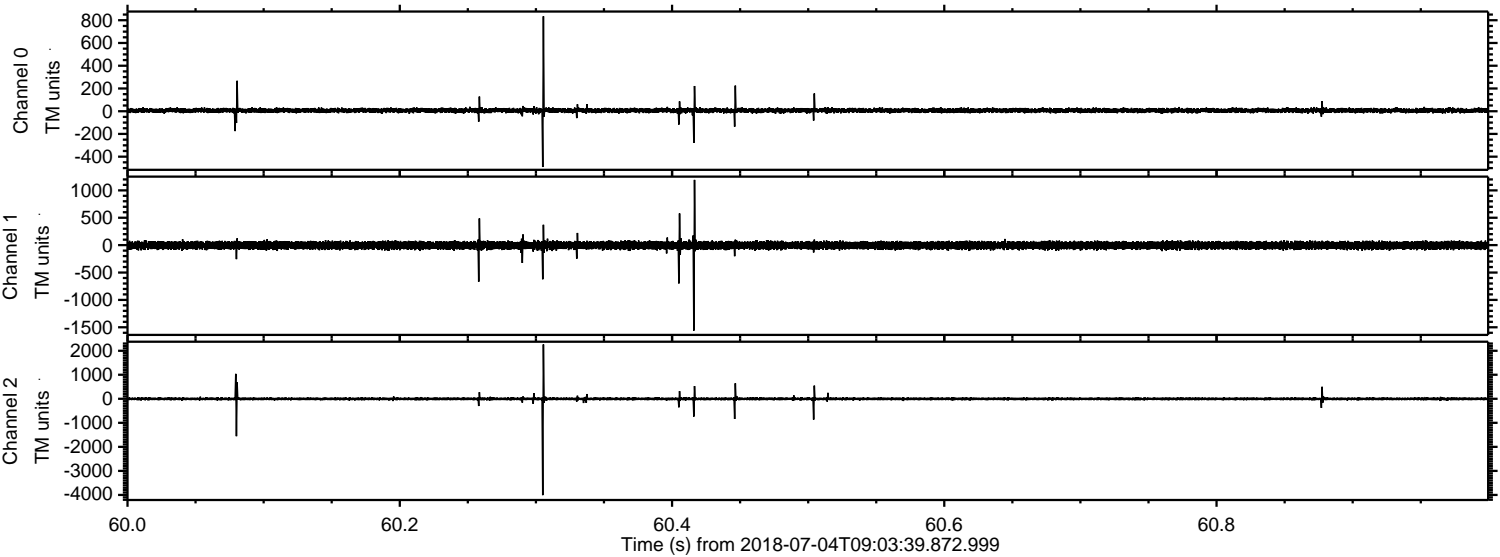


Channel 0
mn: -965
mx: 931
 μ : 6.7
 σ : 12.7

Channel 1
mn: -771
mx: 635
 μ : -4.5
 σ : 35.6

Channel 2
mn: -4226
mx: 2484
 μ : -2.5
 σ : 46.8

Processed Wed Jul 4 11:11:34 2018 by ELM ver.2012-10-06 from 001__elm20180704_090338__dat00.bin

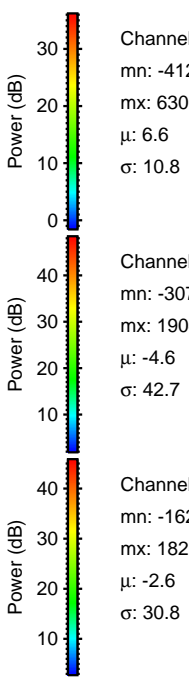
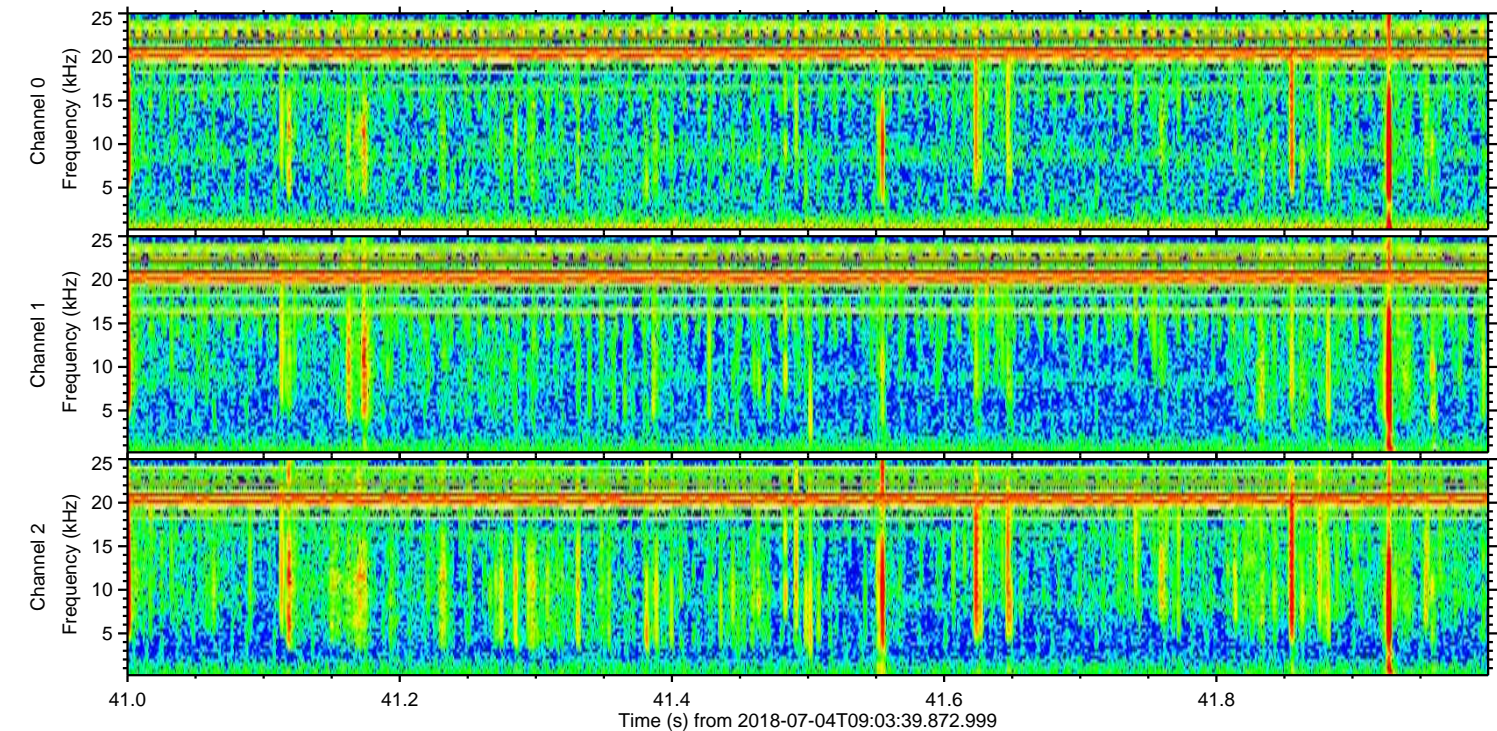
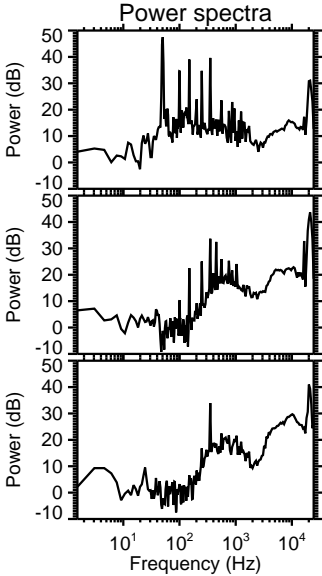
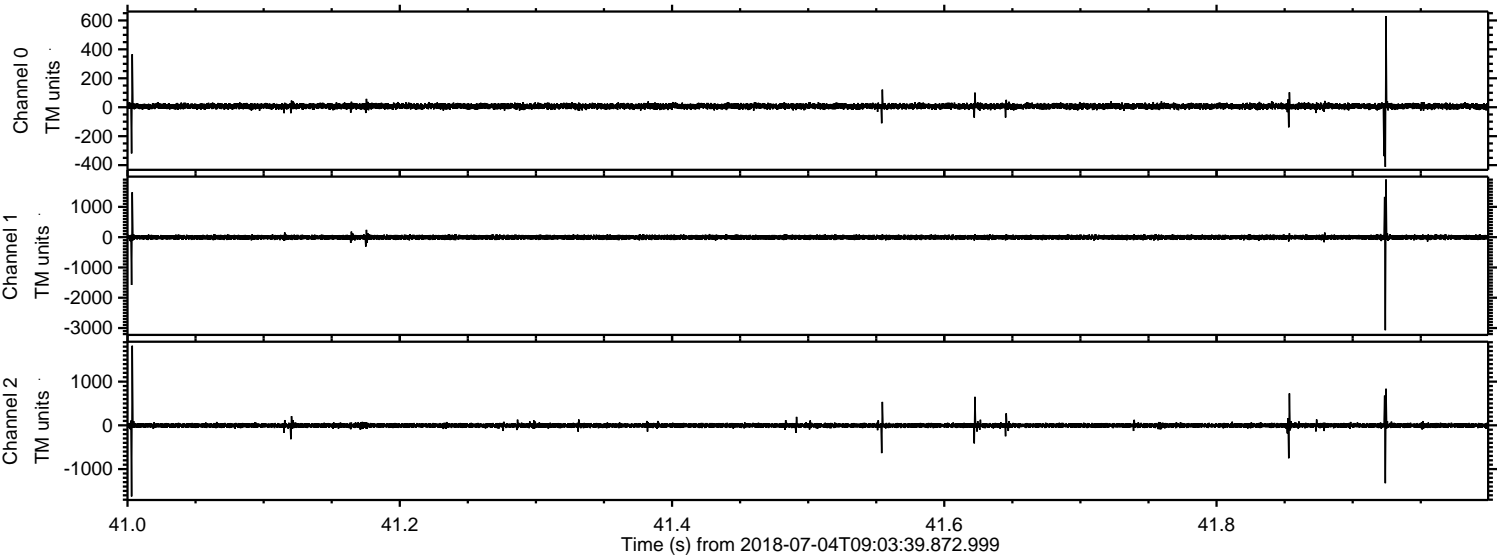


Channel 0
mn: -491
mx: 835
 μ : 6.7
 σ : 11.1

Channel 1
mn: -1561
mx: 1191
 μ : -4.5
 σ : 37.2

Channel 2
mn: -4010
mx: 2263
 μ : -2.6
 σ : 36.6

Processed Wed Jul 4 11:11:34 2018 by ELM ver.2012-10-06 from 001__elm20180704_090338__dat00.bin

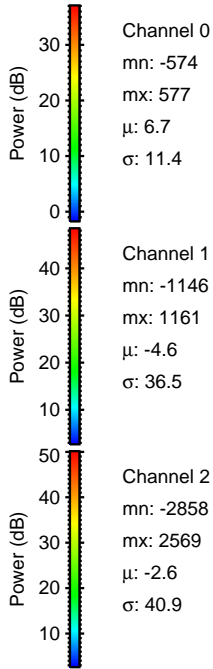
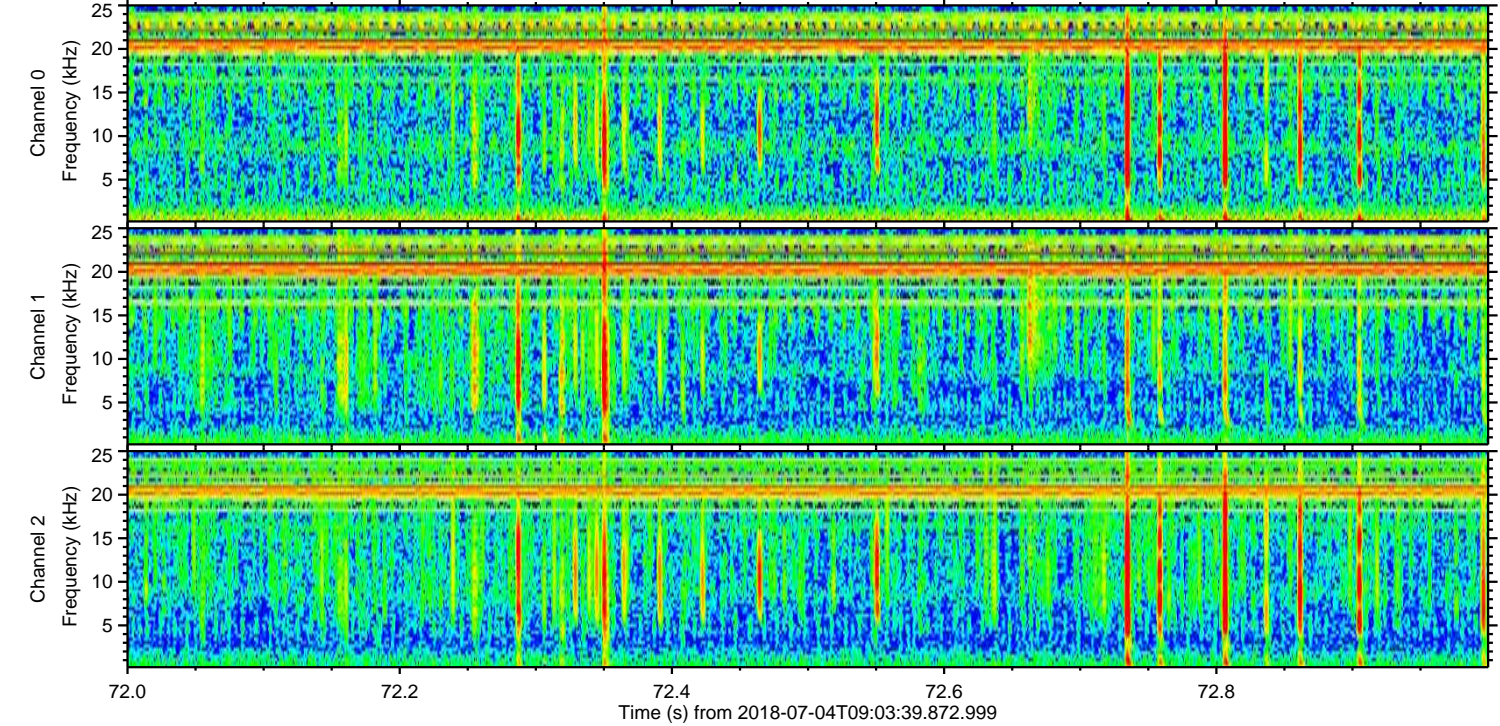
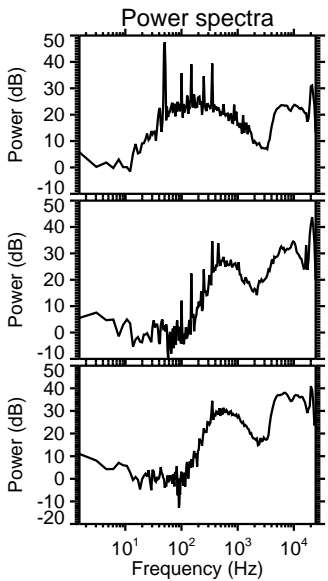
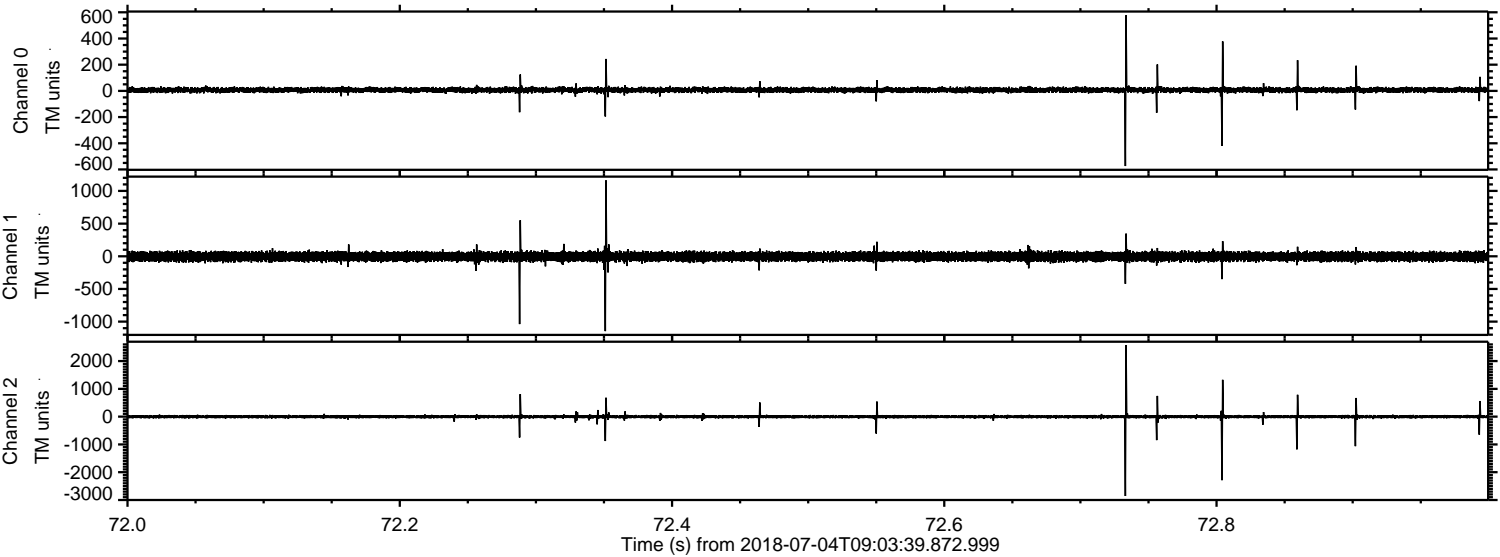


Channel 0
mn: -412
mx: 630
 μ : 6.6
 σ : 10.8

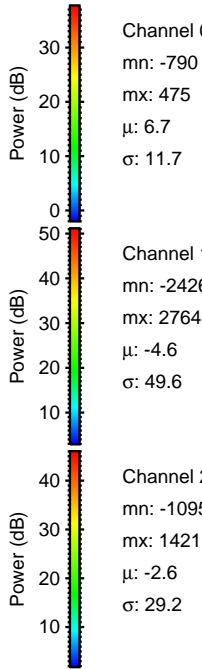
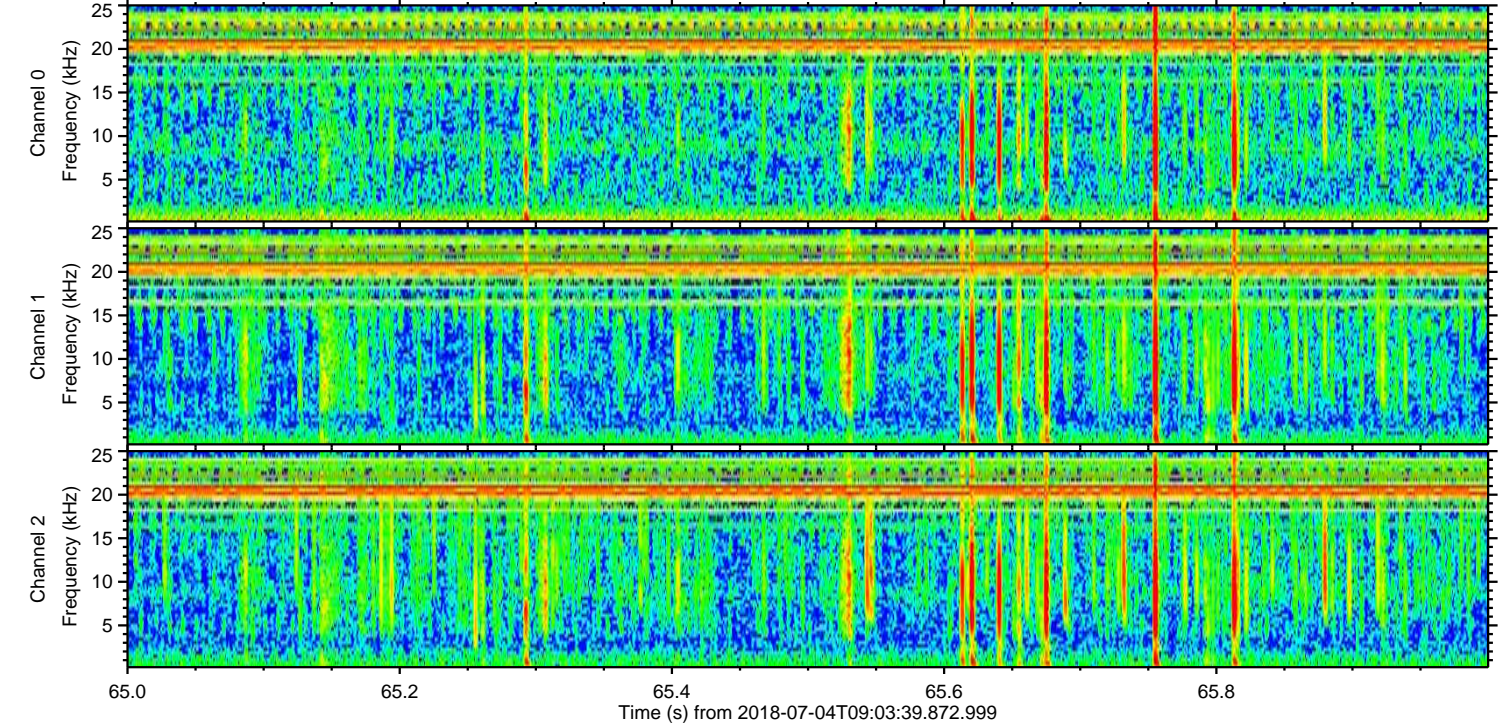
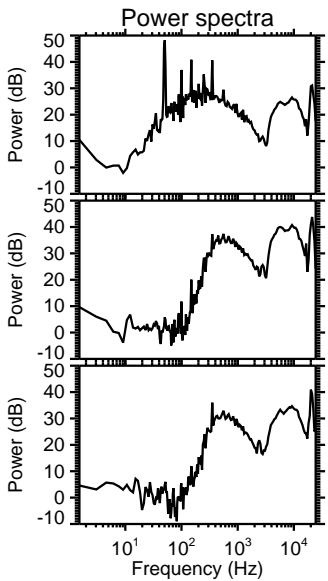
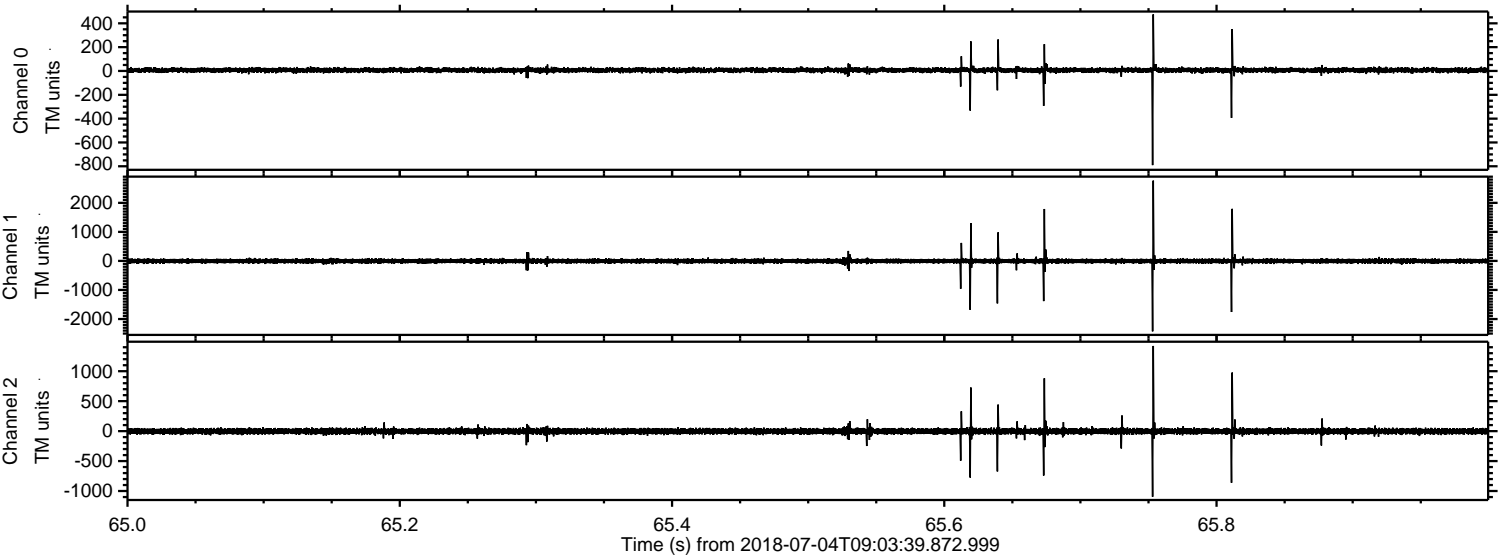
Channel 1
mn: -3074
mx: 1904
 μ : -4.6
 σ : 42.7

Channel 2
mn: -1626
mx: 1821
 μ : -2.6
 σ : 30.8

Processed Wed Jul 4 11:11:35 2018 by ELM ver.2012-10-06 from 001__elm20180704_090338__dat00.bin



Processed Wed Jul 4 11:11:36 2018 by ELM ver.2012-10-06 from 001__elm20180704_090338__dat00.bin



Processed Wed Jul 4 11:11:36 2018 by ELM ver.2012-10-06 from 001__elm20180704_090338__dat00.bin

