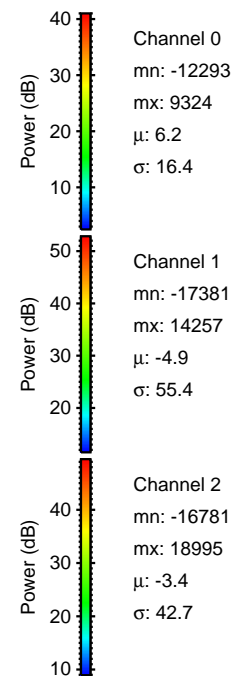
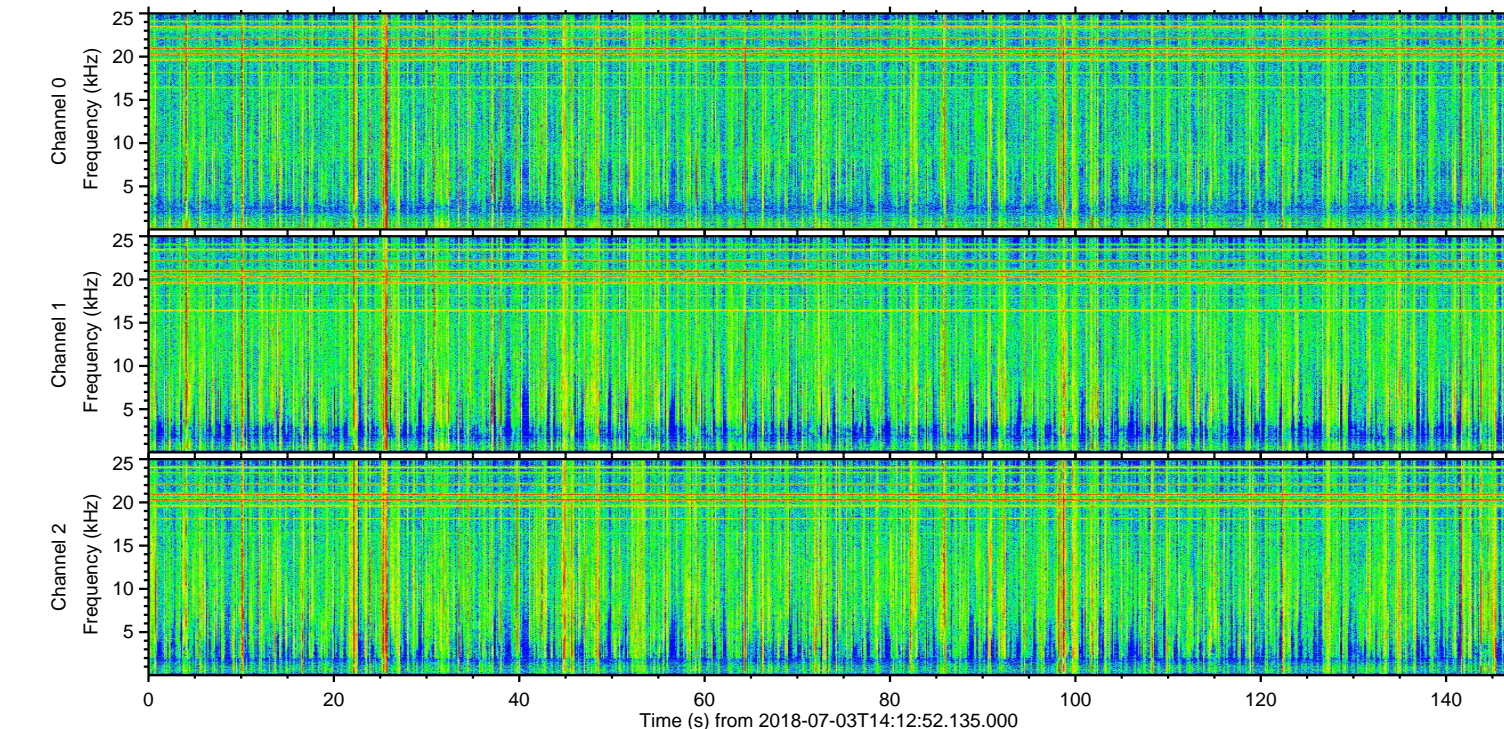
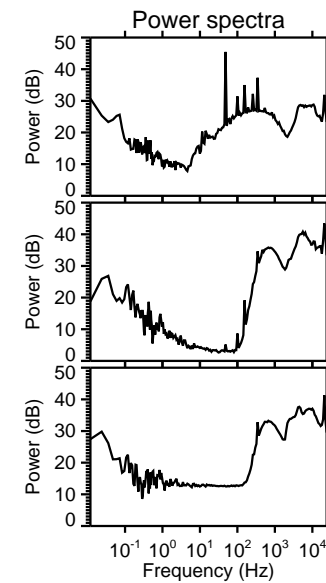
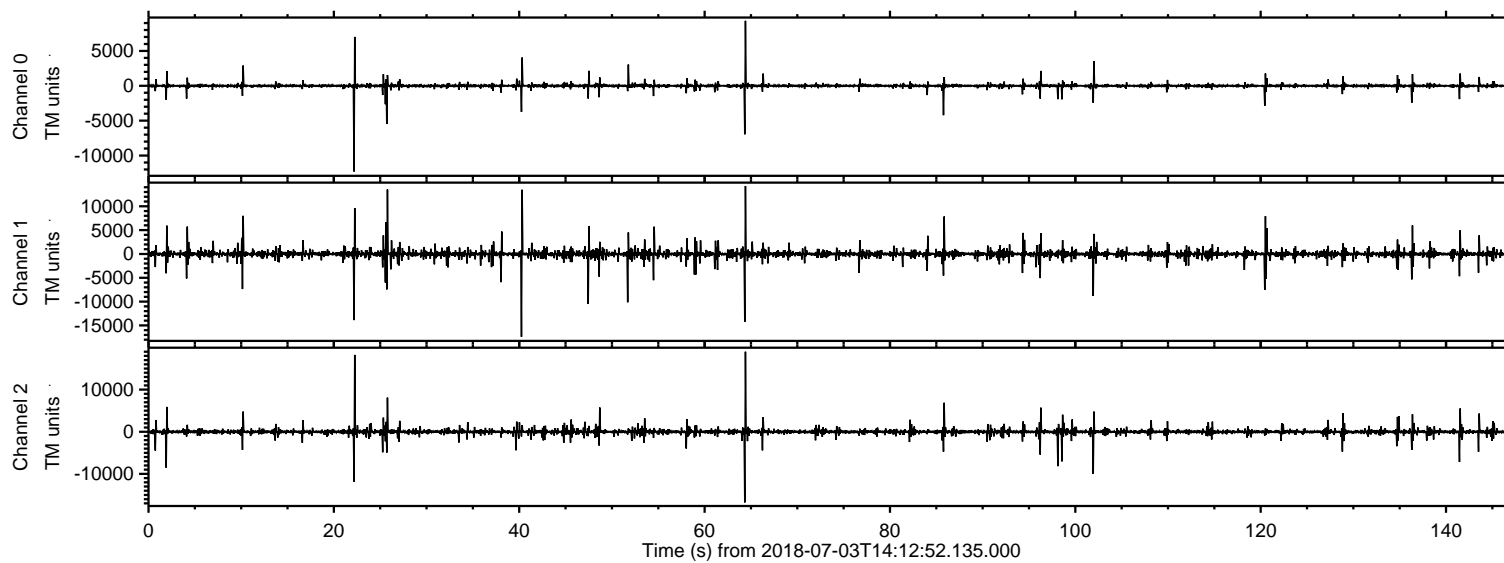
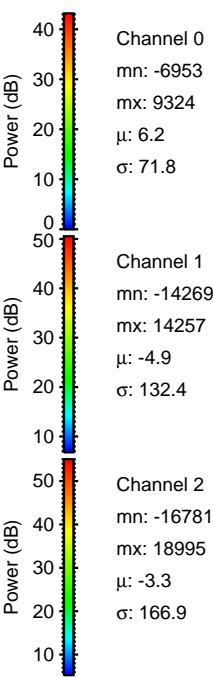
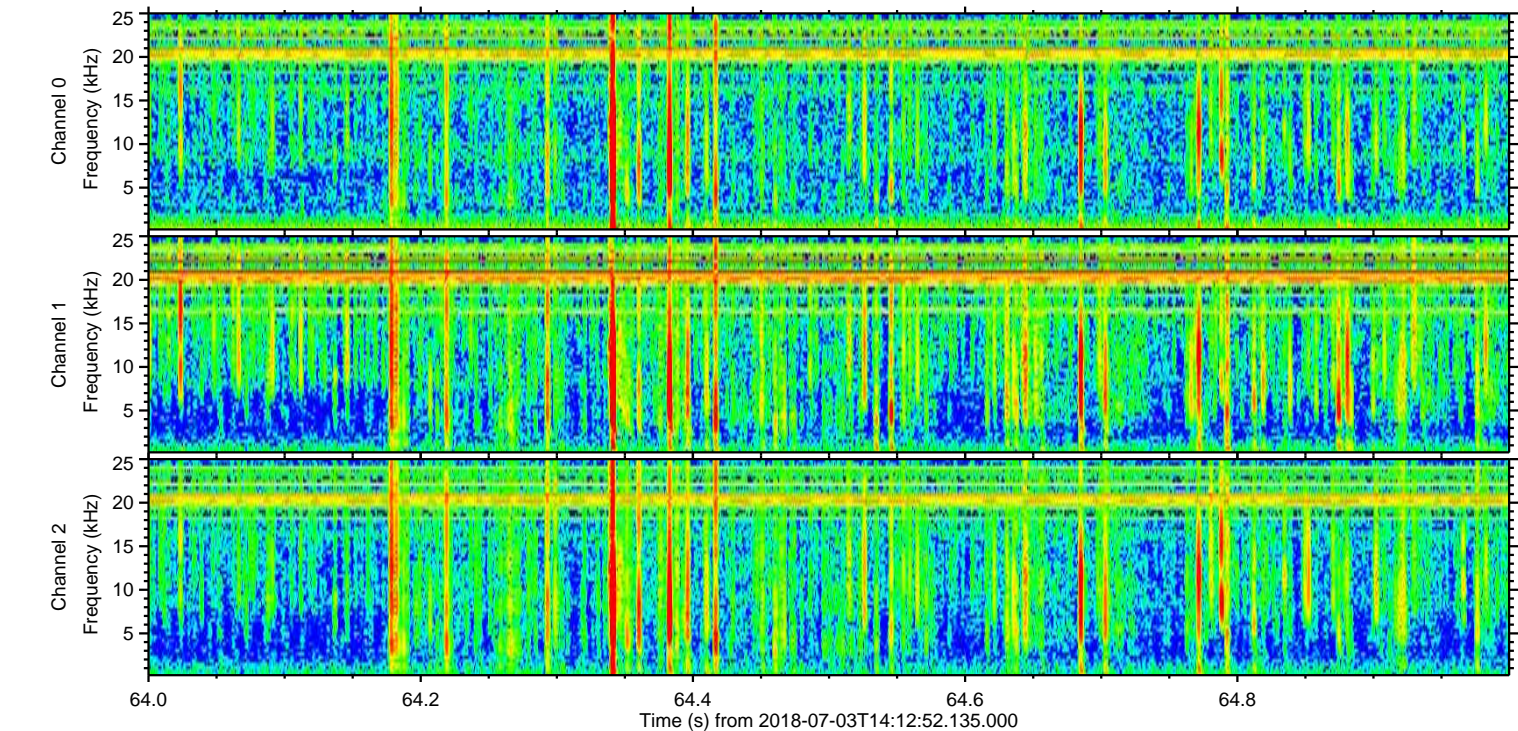
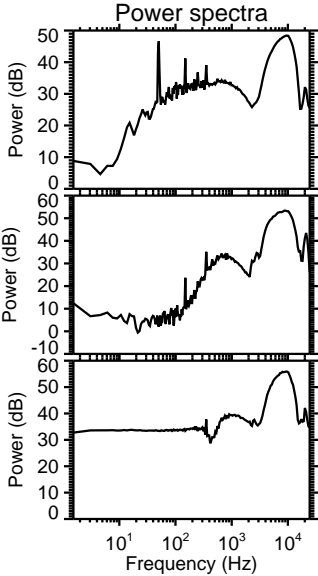
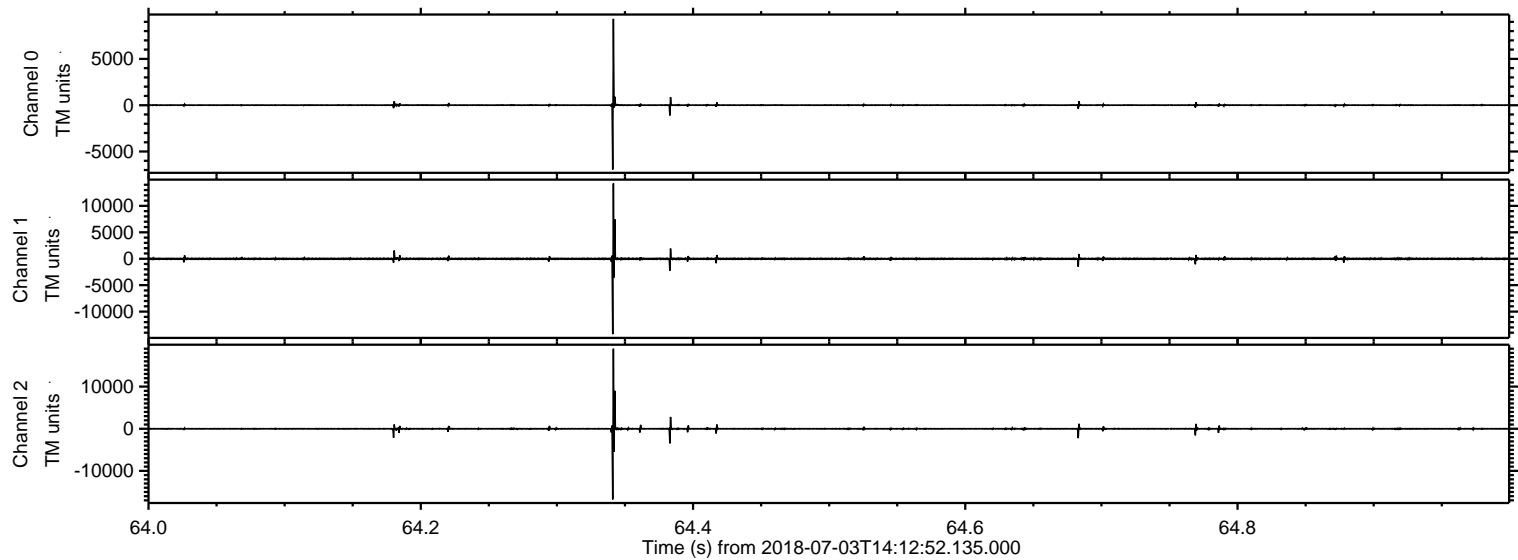


ELMAVAN 3D WAVEFORMS (Measured data sampled at 50 kHz) 51000 packets of 144 samples from 2018-07-03T14:12:52.135.000.

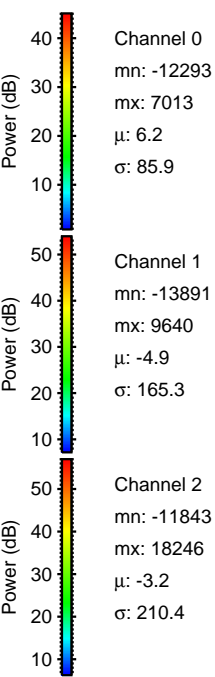
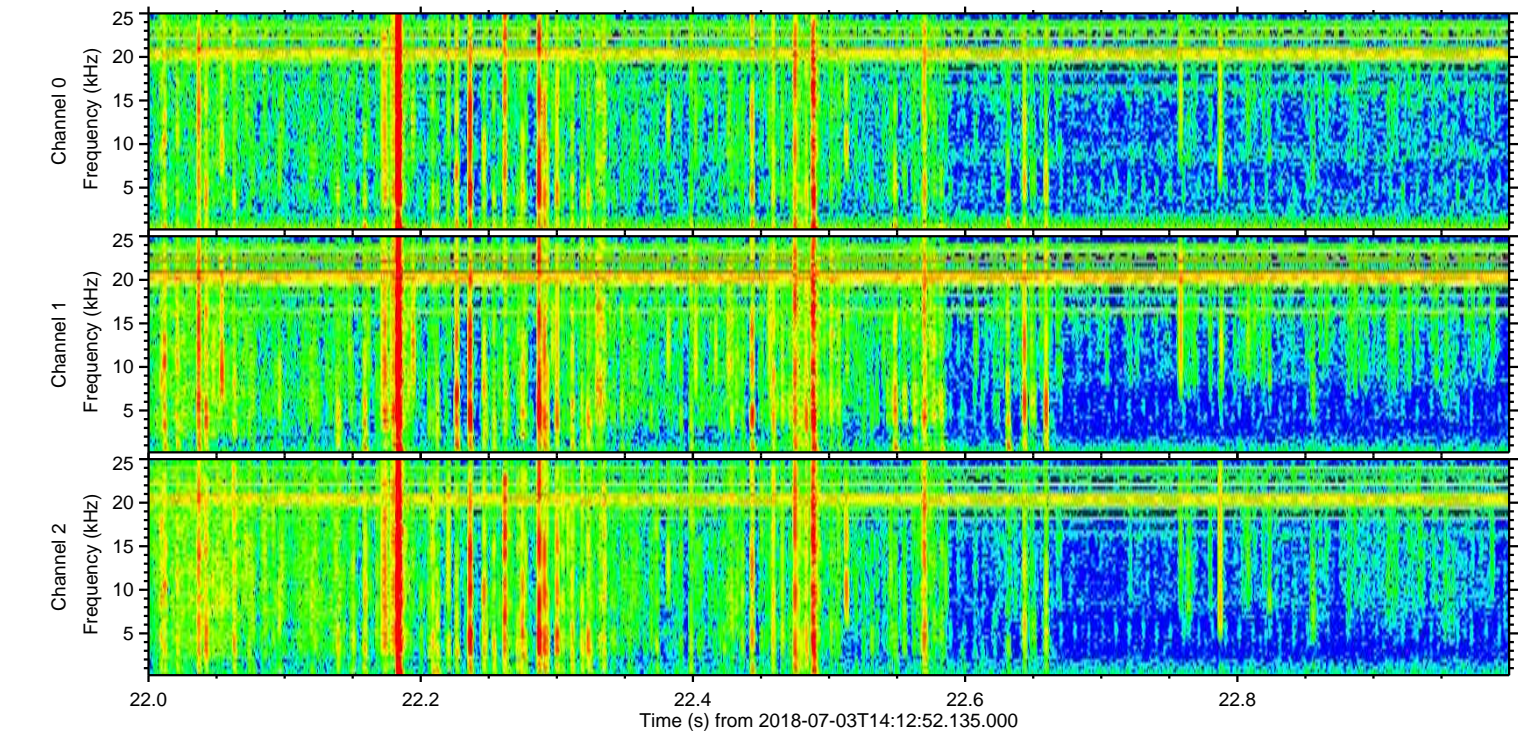
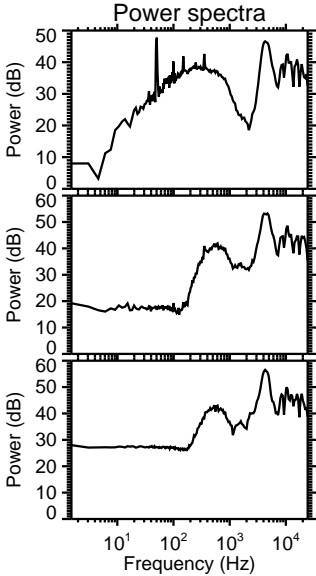
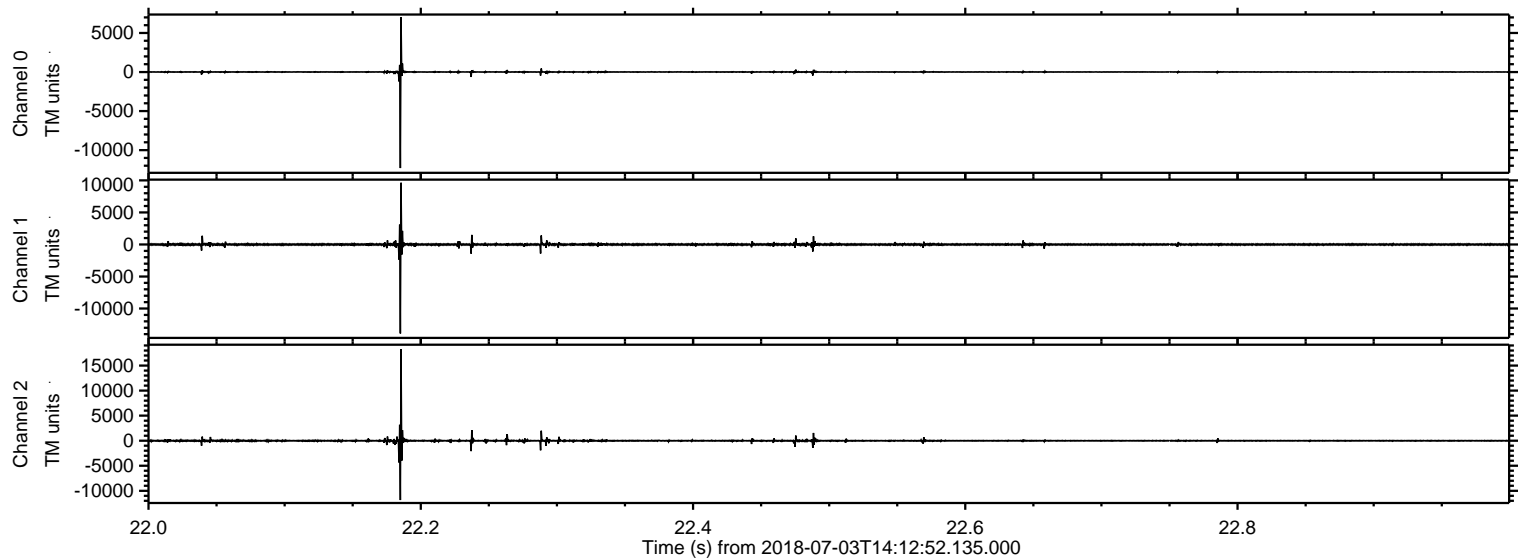
Processed Tue Jul 3 16:20:49 2018 by ELM ver.2012-10-06 from 001__elm20180703_141251__dat00.bin



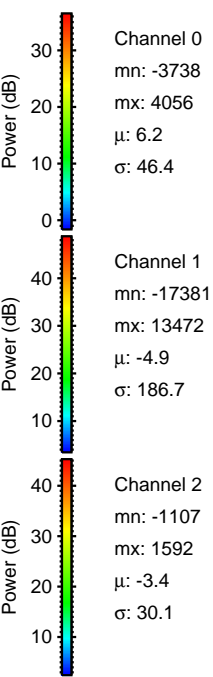
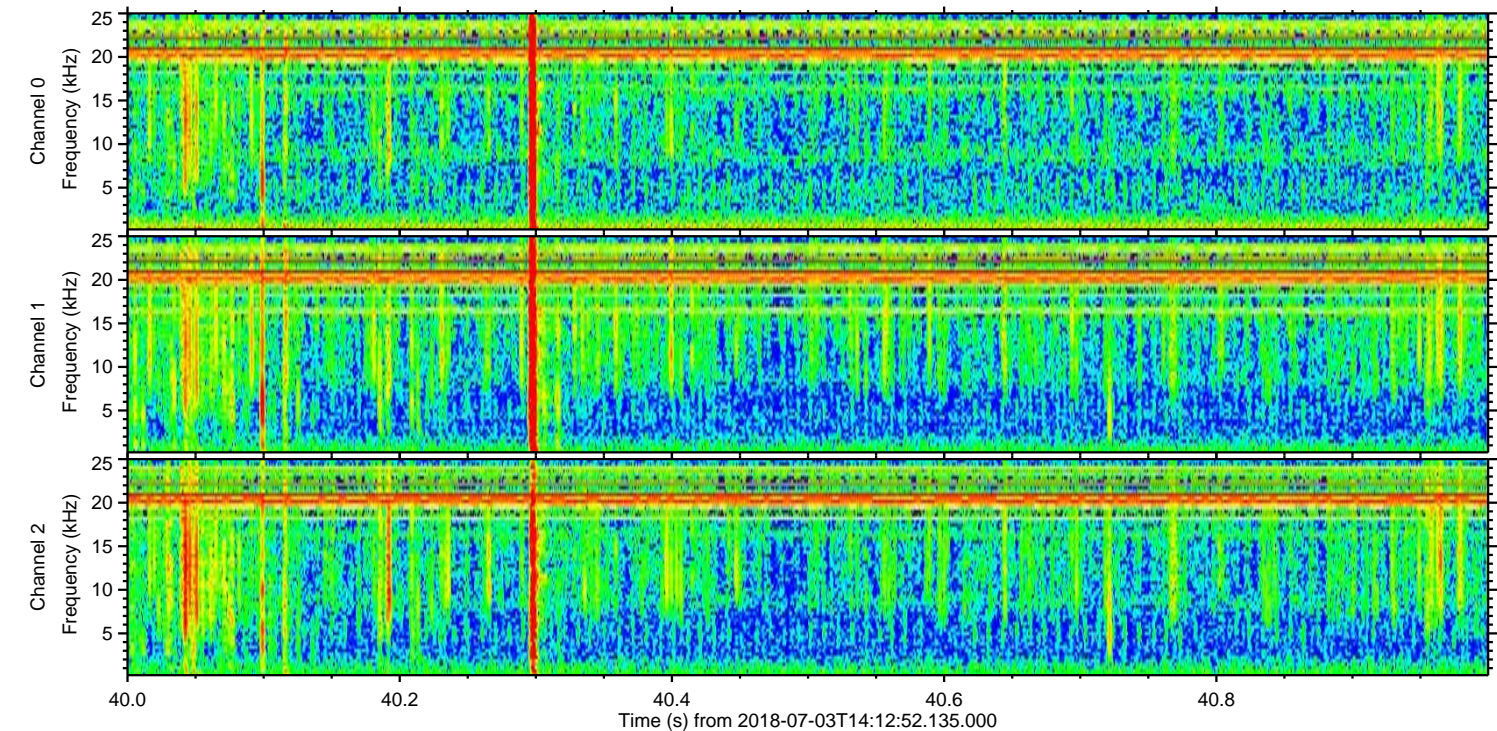
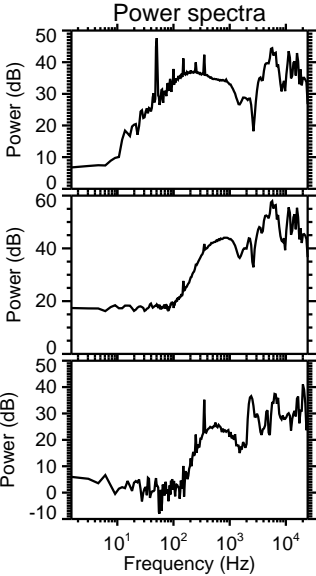
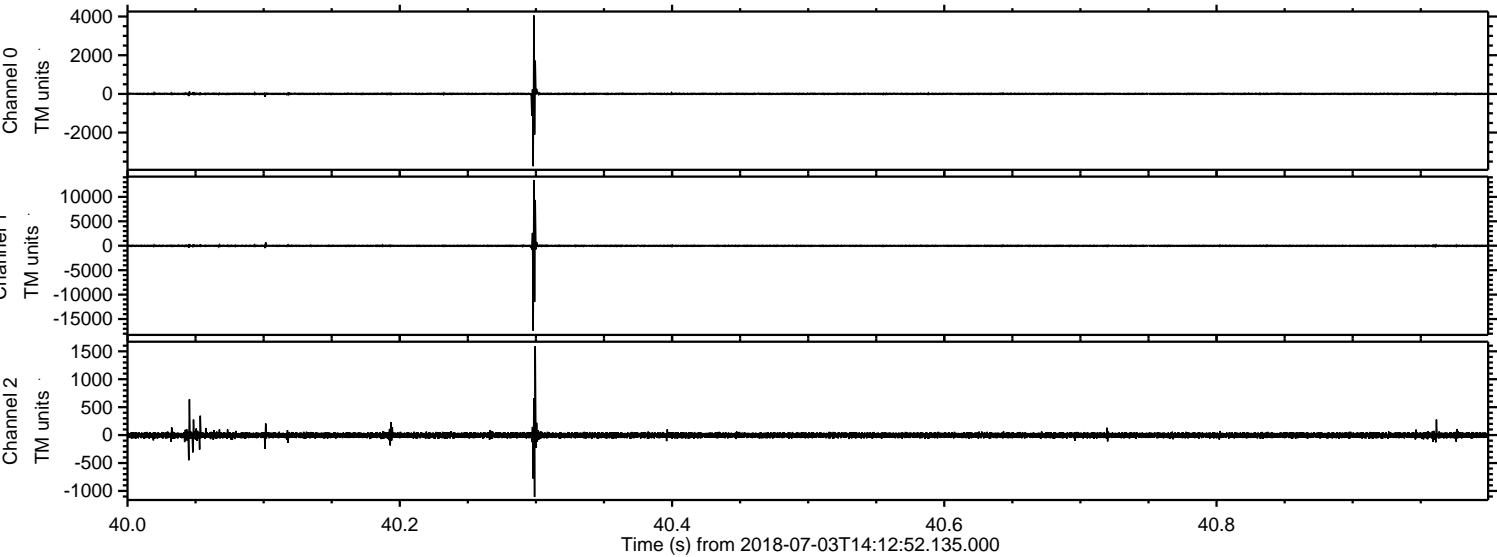
Processed Tue Jul 3 16:20:56 2018 by ELM ver.2012-10-06 from 001__elm20180703_141251__dat00.bin



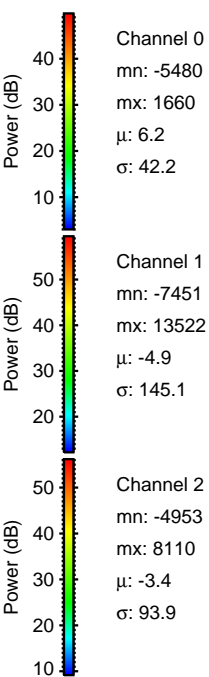
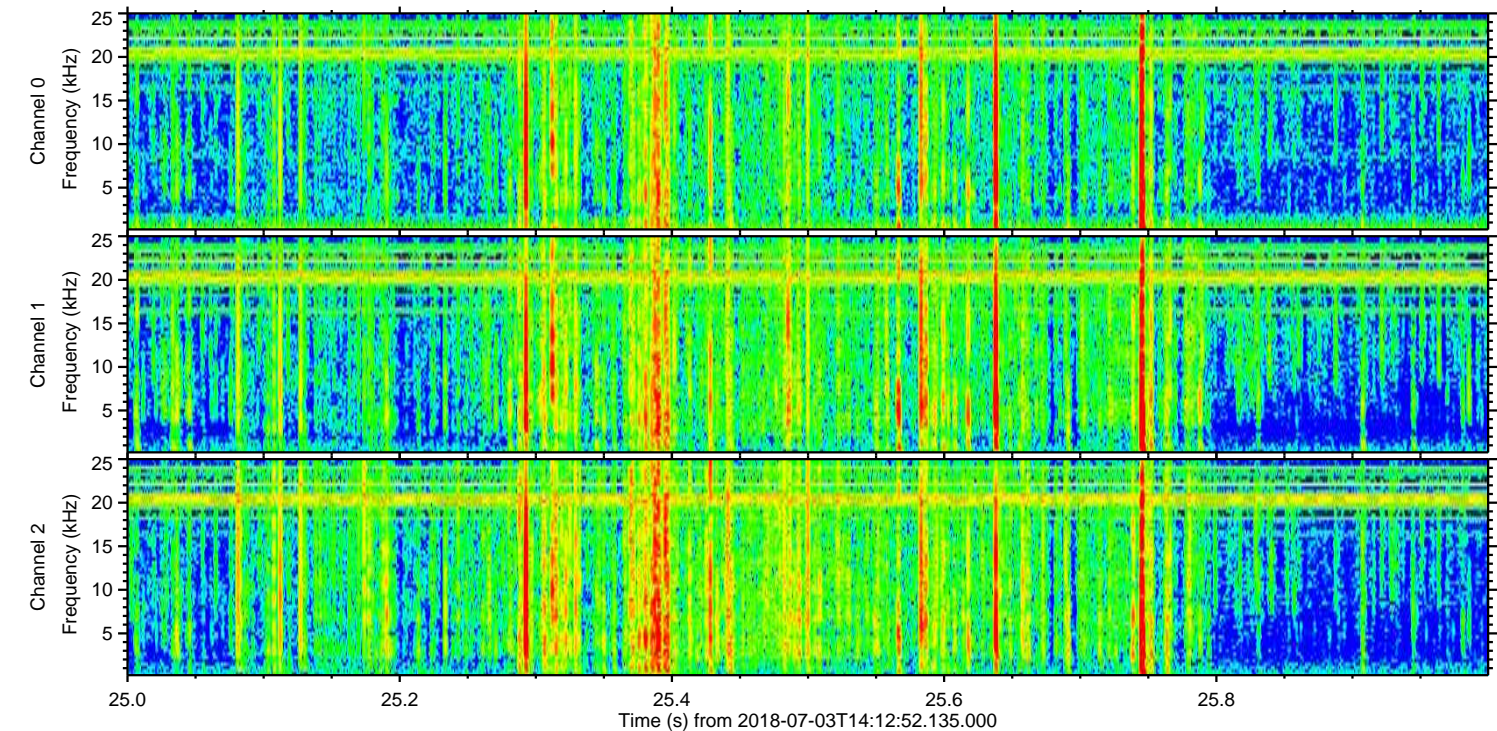
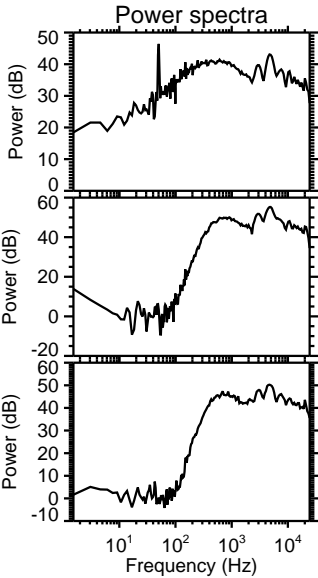
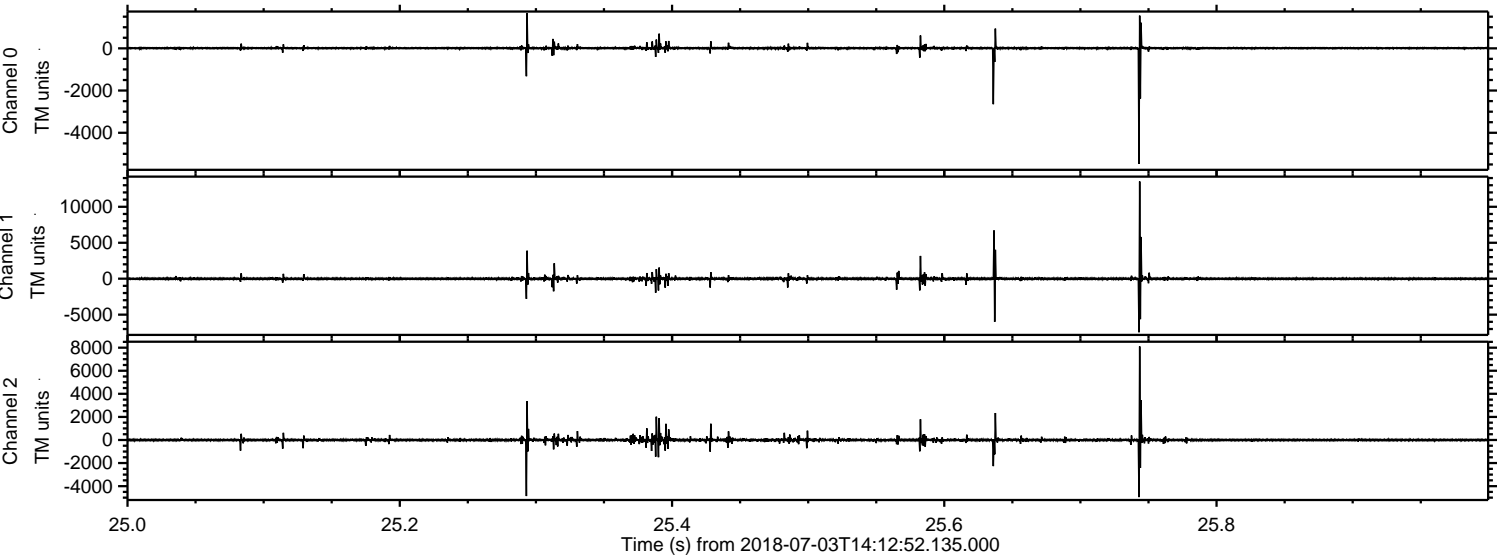
Processed Tue Jul 3 16:20:57 2018 by ELM ver.2012-10-06 from 001__elm20180703_141251__dat00.bin



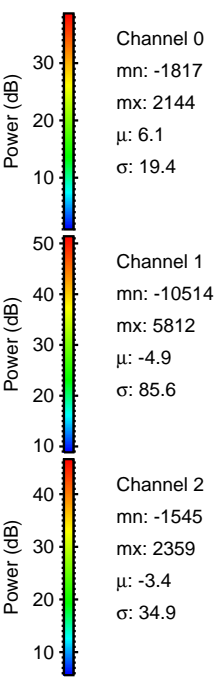
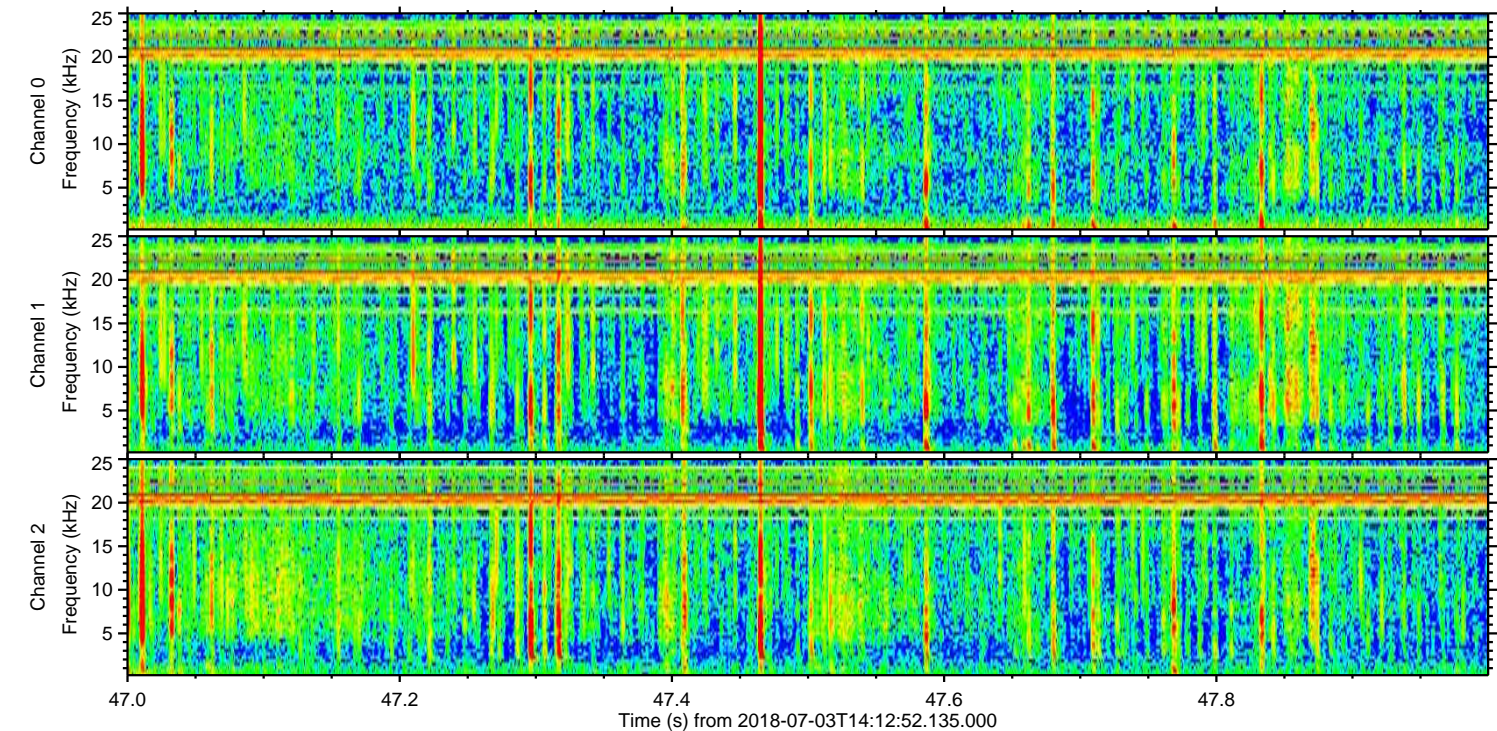
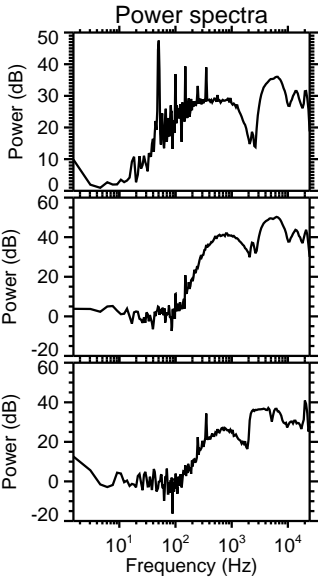
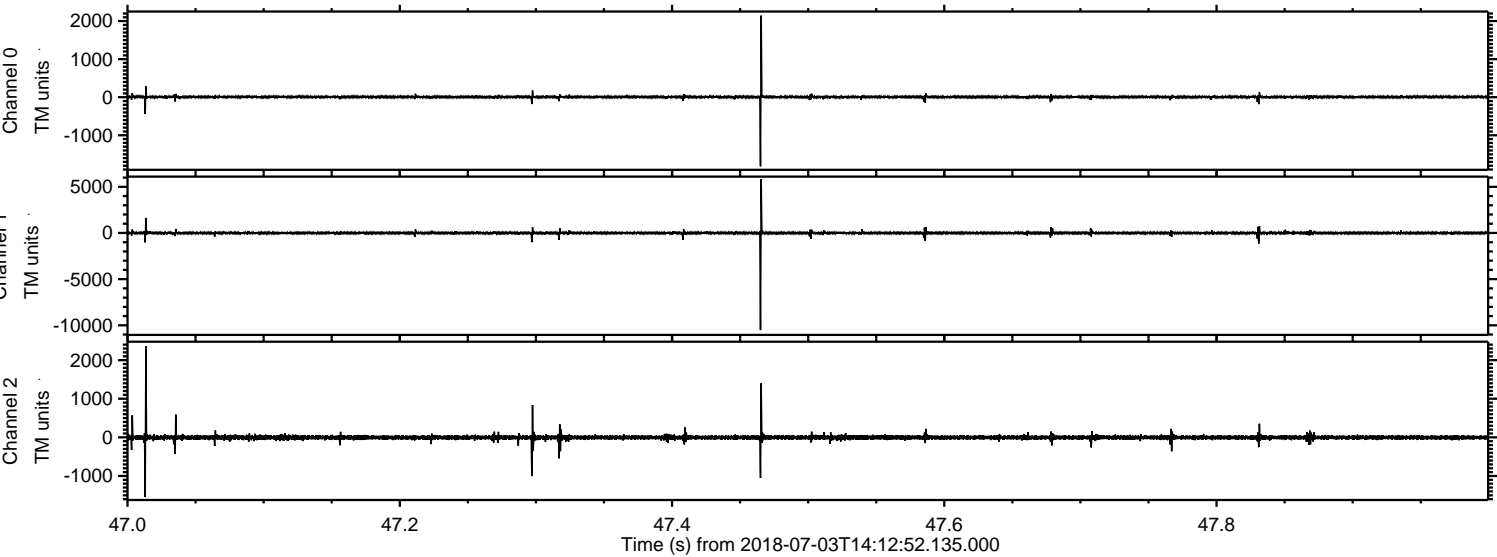
Processed Tue Jul 3 16:20:58 2018 by ELM ver.2012-10-06 from 001__elm20180703_141251__dat00.bin



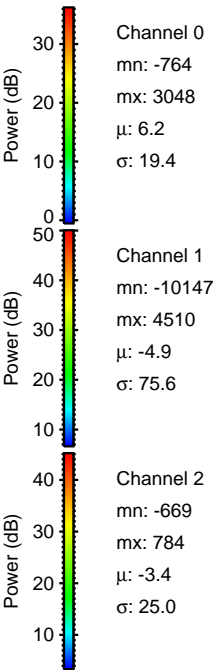
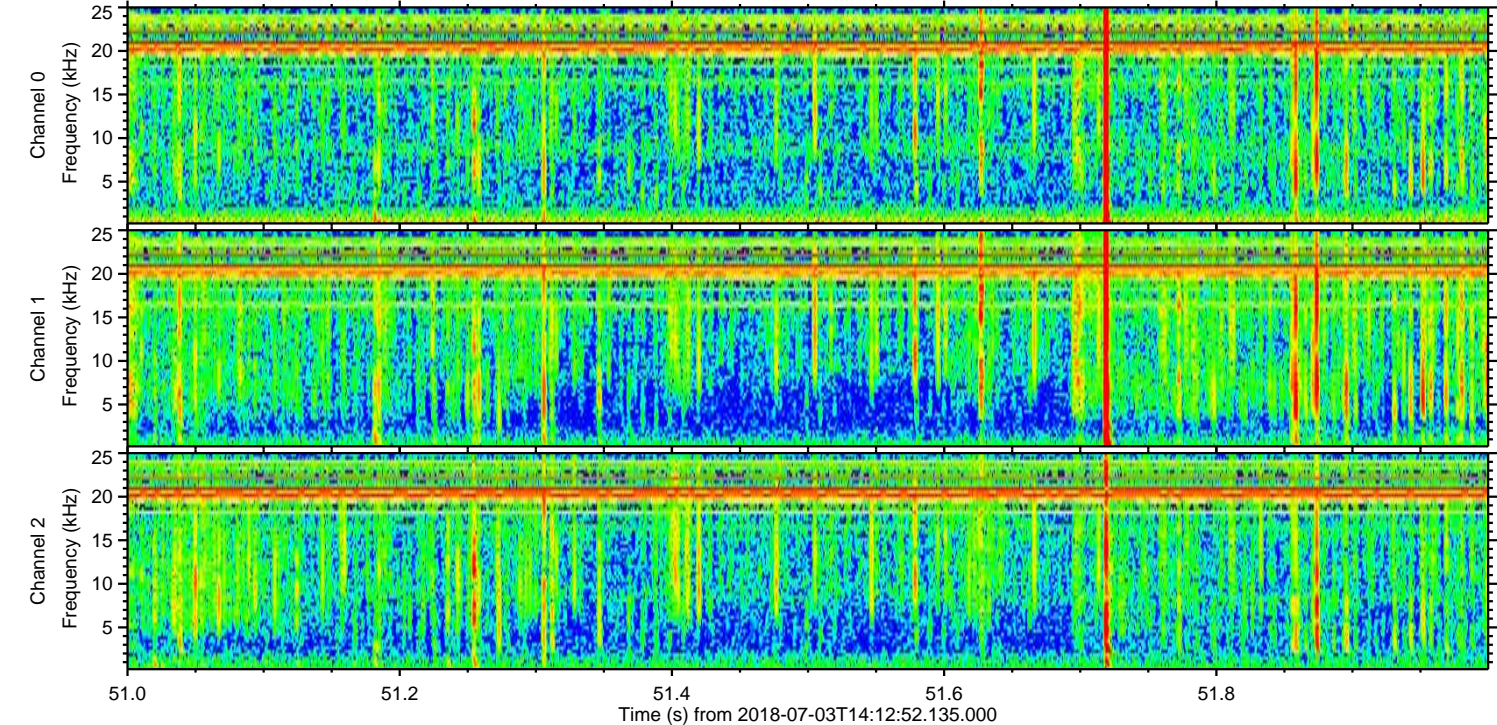
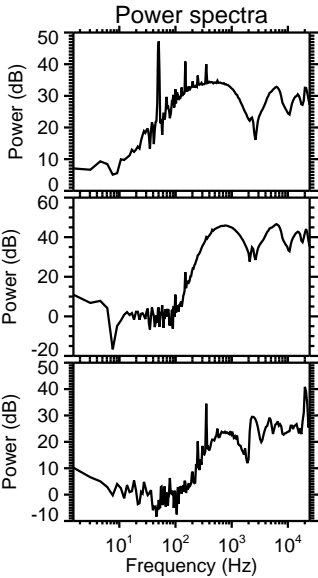
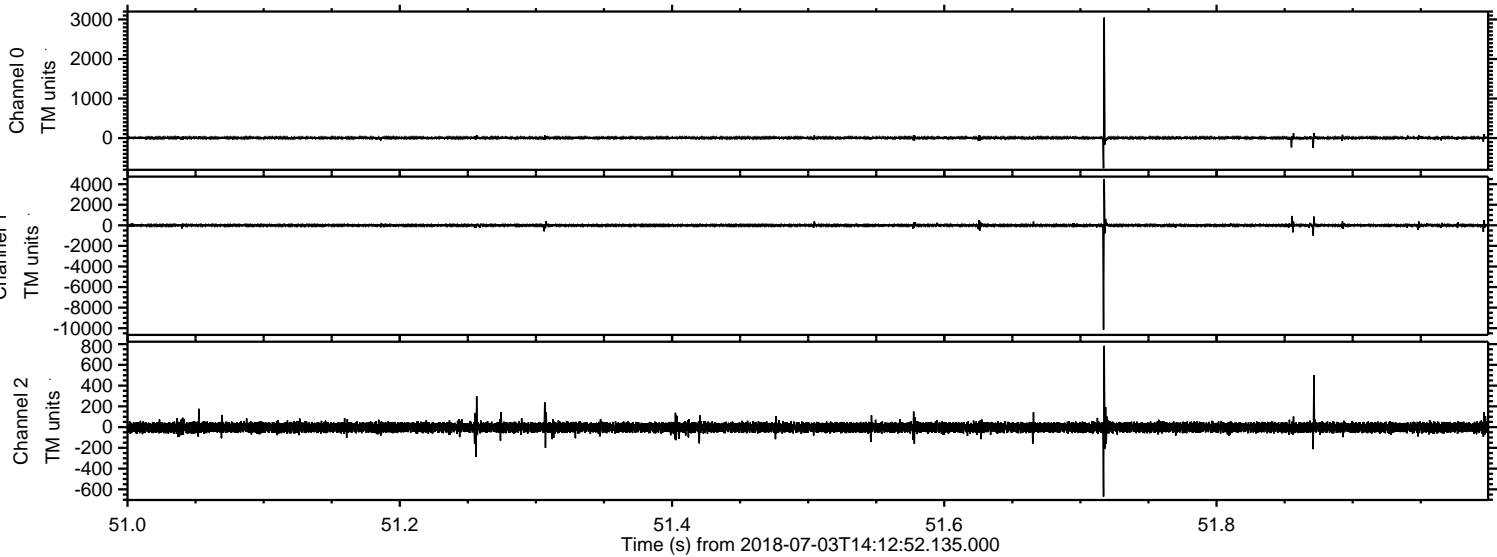
Processed Tue Jul 3 16:20:58 2018 by ELM ver.2012-10-06 from 001__elm20180703_141251__dat00.bin



Processed Tue Jul 3 16:20:59 2018 by ELM ver.2012-10-06 from 001__elm20180703_141251__dat00.bin



Processed Tue Jul 3 16:21:00 2018 by ELM ver.2012-10-06 from 001__elm20180703_141251__dat00.bin



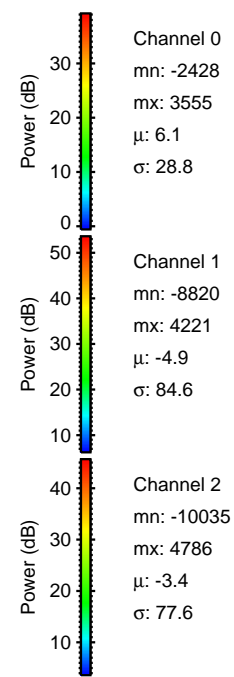
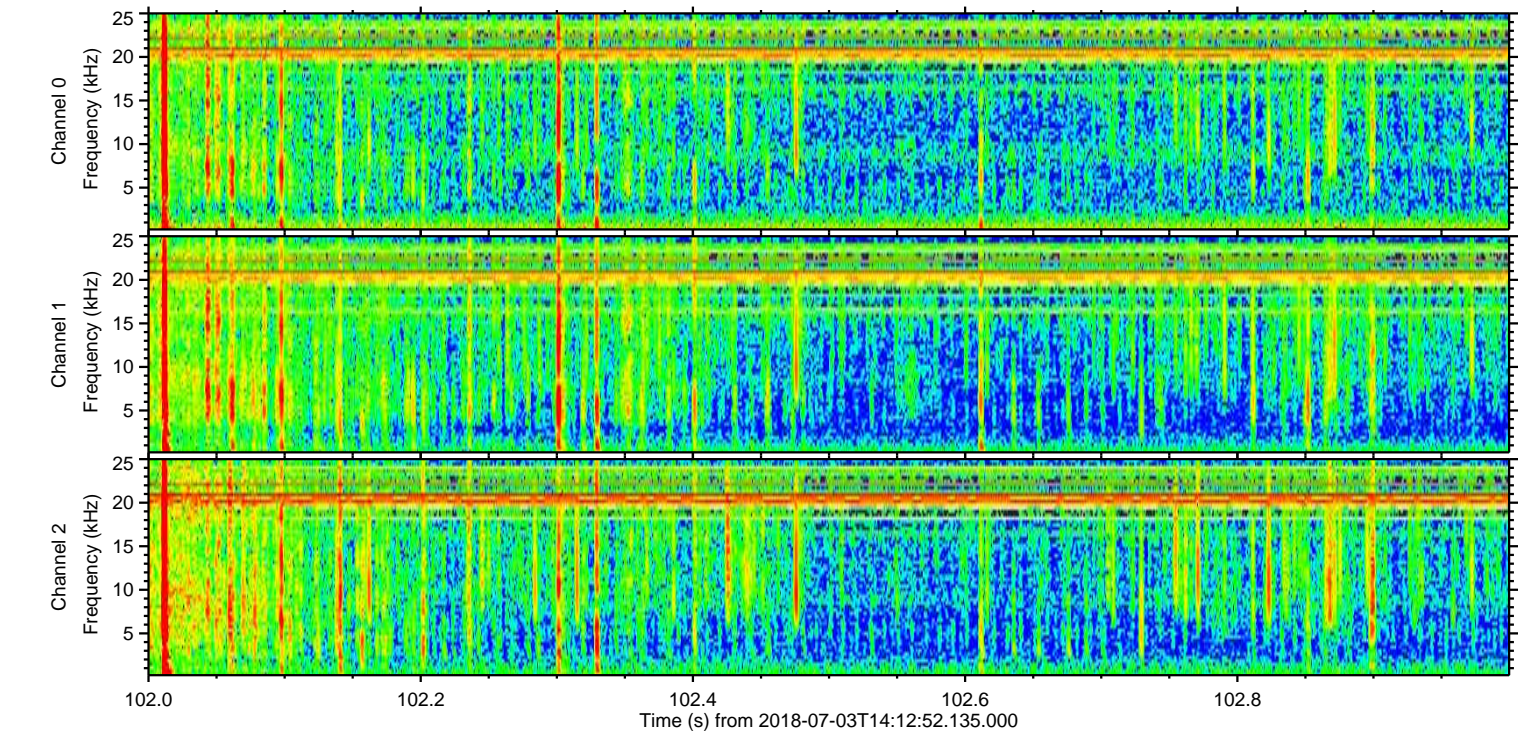
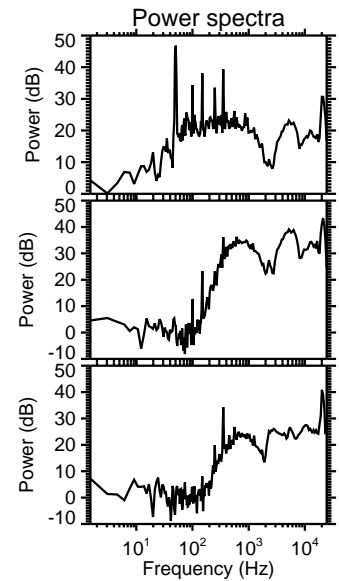
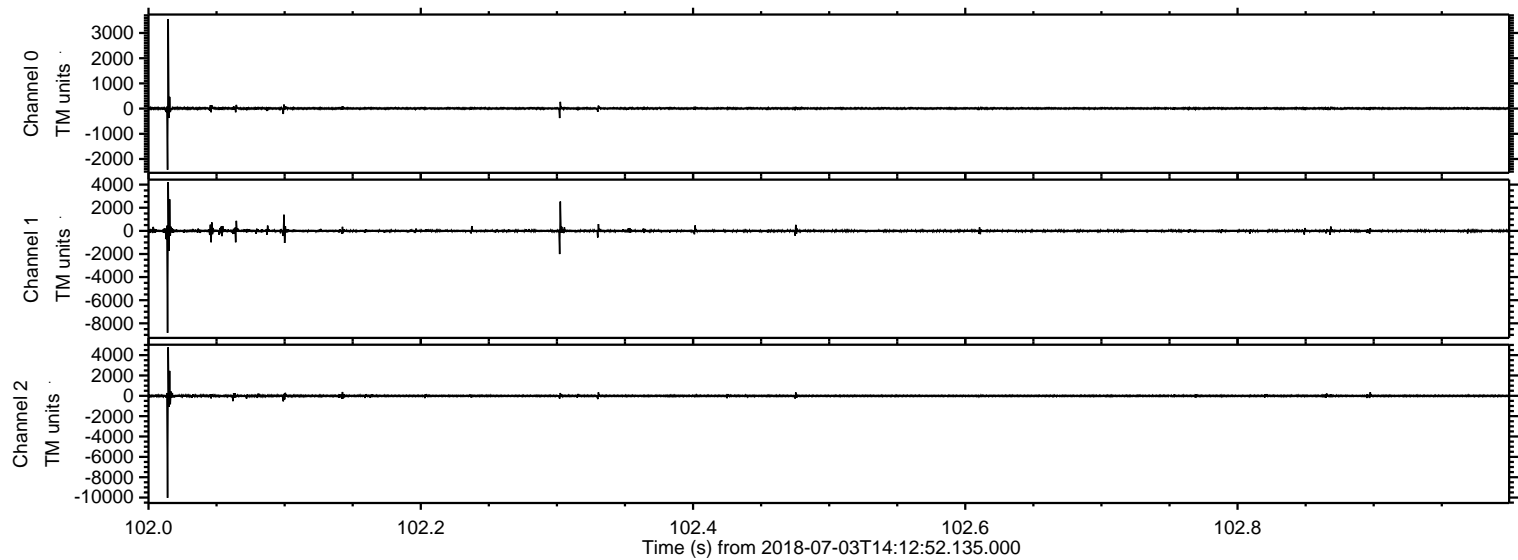
Channel 0
mn: -764
mx: 3048
 μ : 6.2
 σ : 19.4

Channel 1
mn: -10147
mx: 4510
 μ : -4.9
 σ : 75.6

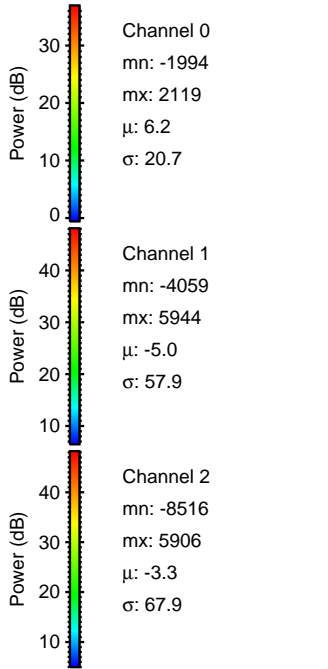
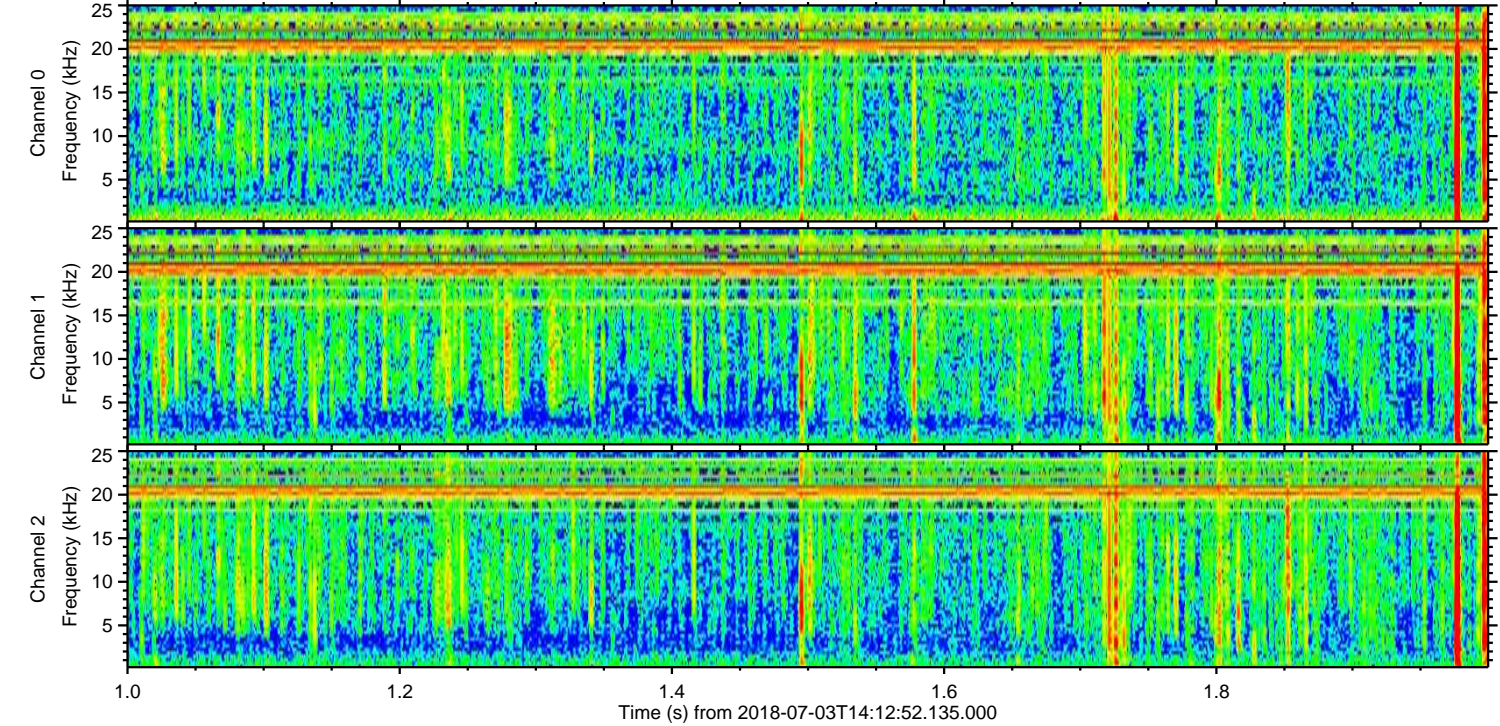
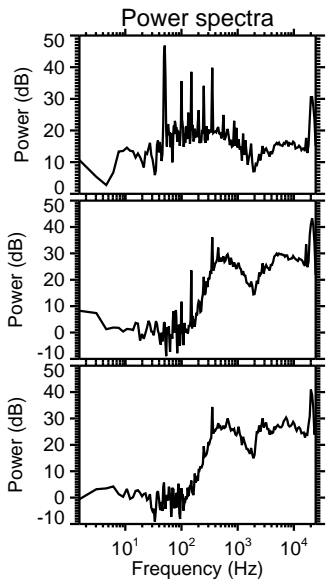
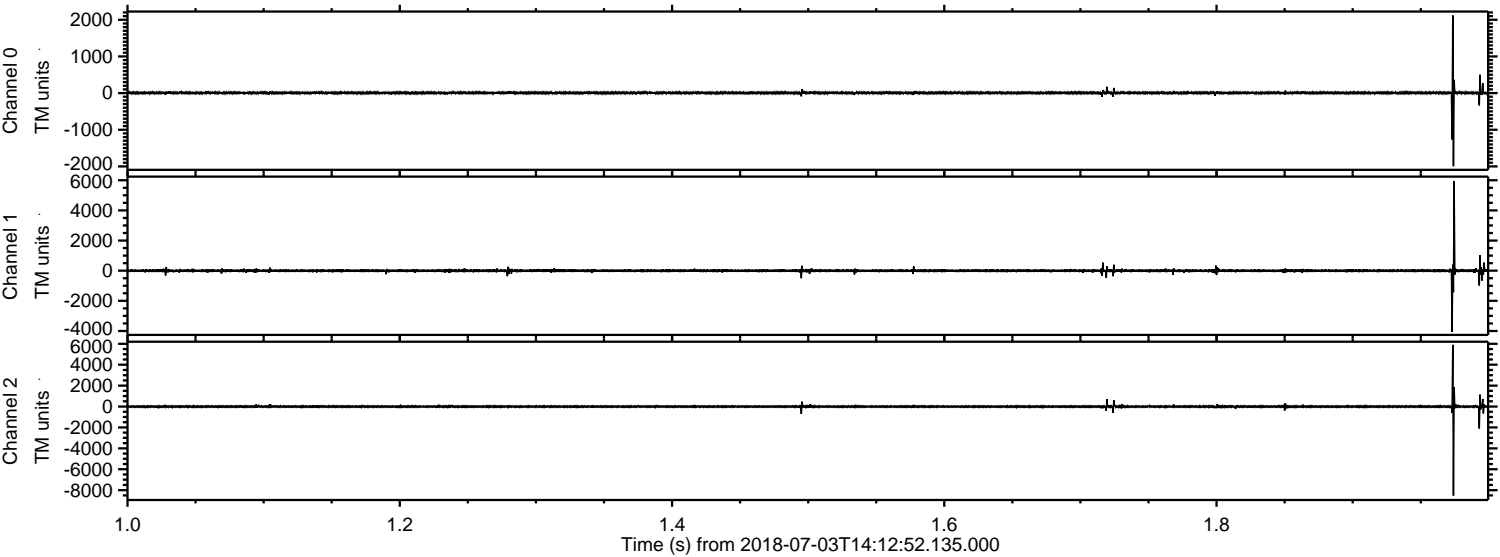
Channel 2
mn: -669
mx: 784
 μ : -3.4
 σ : 25.0

ELMAVAN 3D WAVEFORMS (Measured data sampled at 50 kHz) 51000 packets of 144 samples from 2018-07-03T14:12:52.135.000. Part 103/147

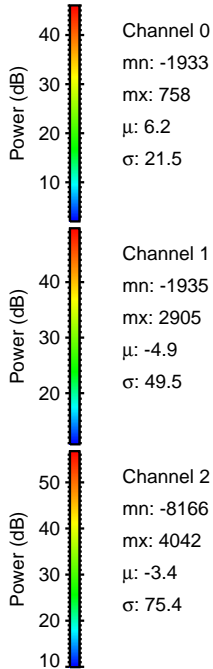
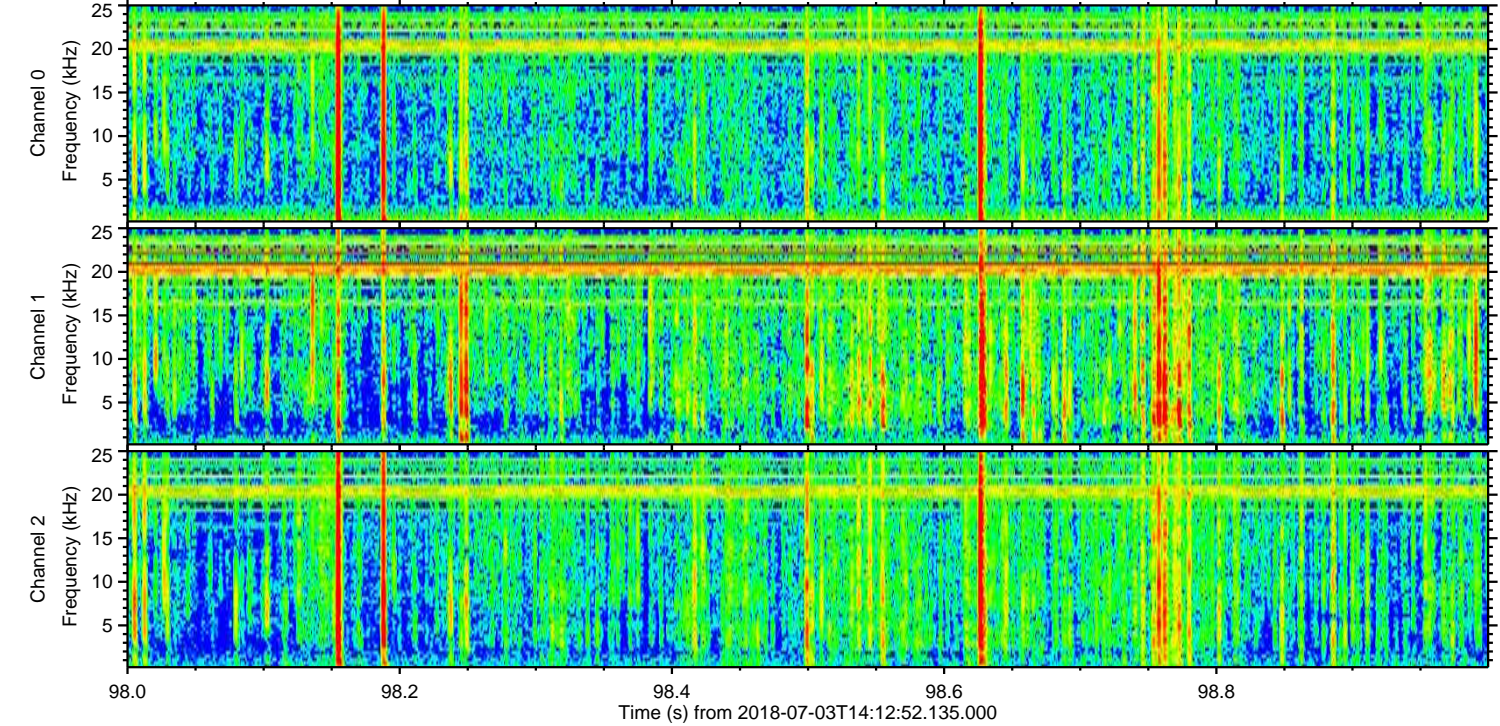
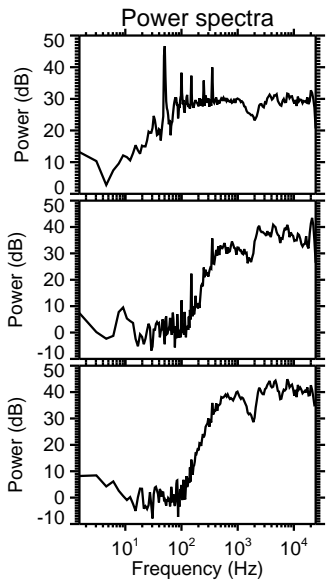
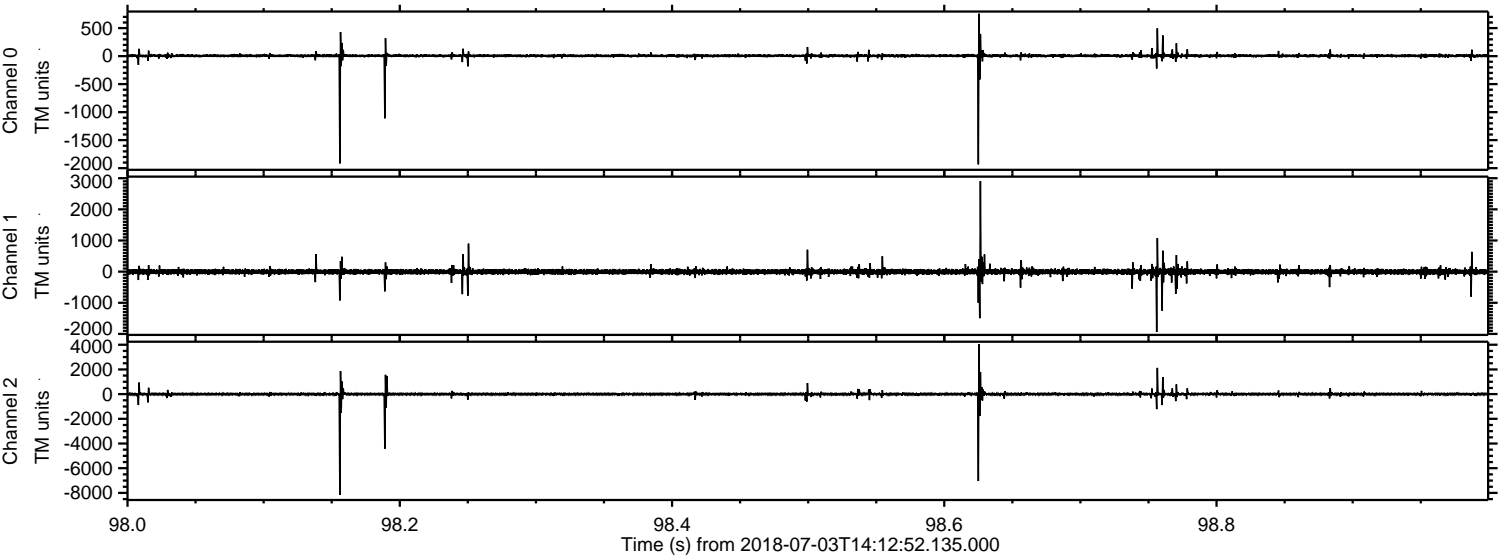
Processed Tue Jul 3 16:21:00 2018 by ELM ver.2012-10-06 from 001__elm20180703_141251__dat00.bin



Processed Tue Jul 3 16:21:01 2018 by ELM ver.2012-10-06 from 001__elm20180703_141251__dat00.bin



Processed Tue Jul 3 16:21:02 2018 by ELM ver.2012-10-06 from 001__elm20180703_141251__dat00.bin



Channel 0
mn: -1933
mx: 758
 μ : 6.2
 σ : 21.5

Channel 1
mn: -1935
mx: 2905
 μ : -4.9
 σ : 49.5

Channel 2
mn: -8166
mx: 4042
 μ : -3.4
 σ : 75.4

