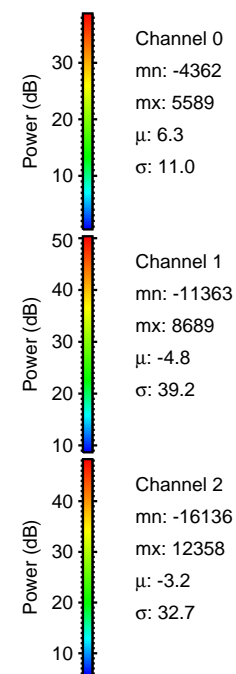
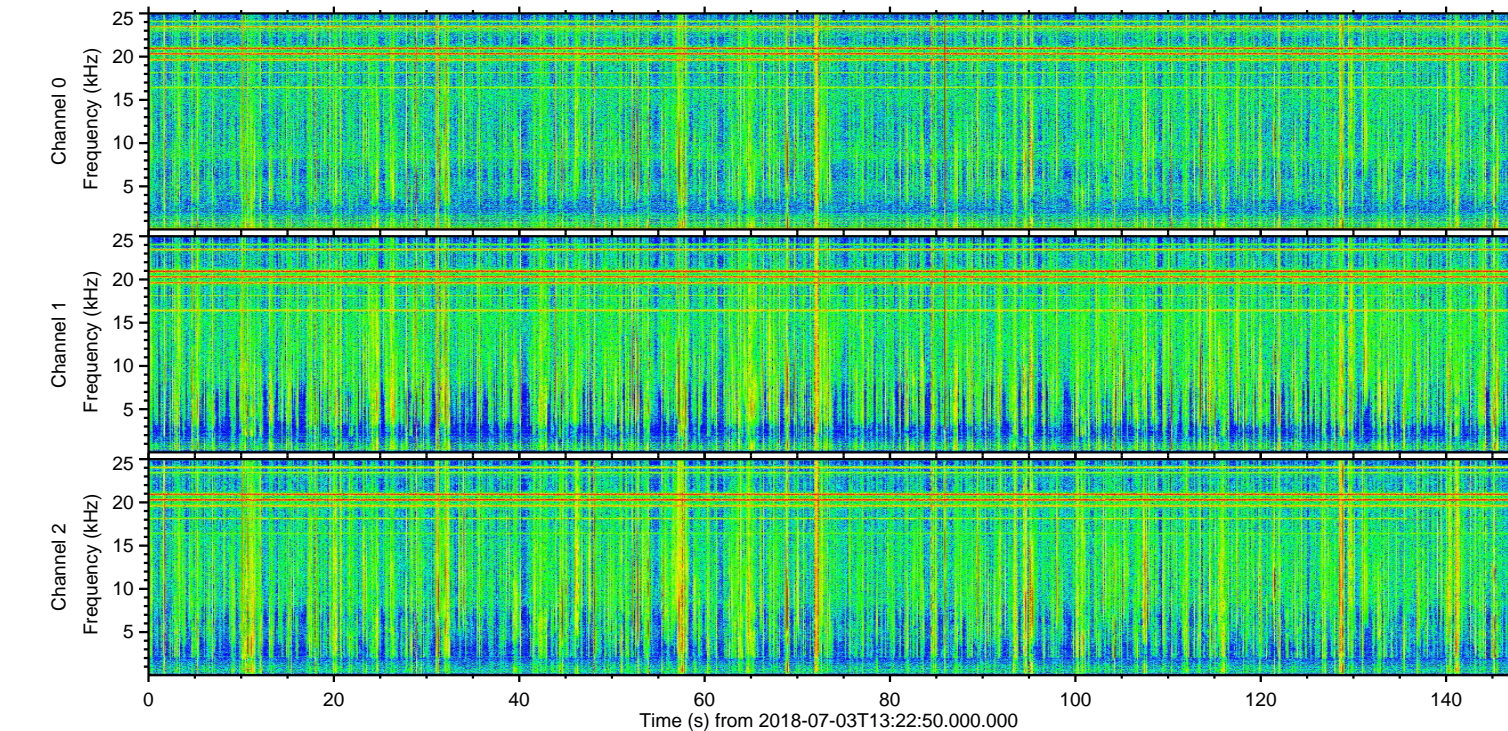
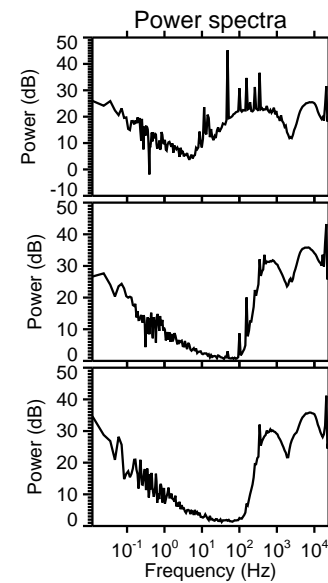
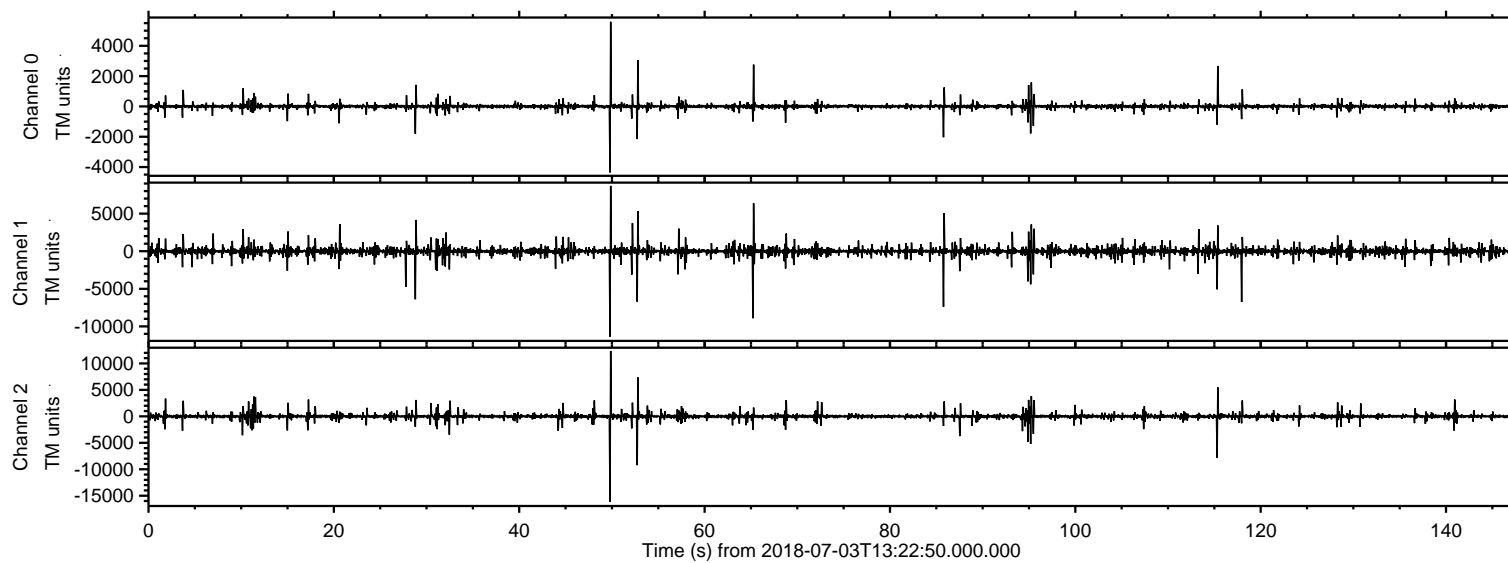
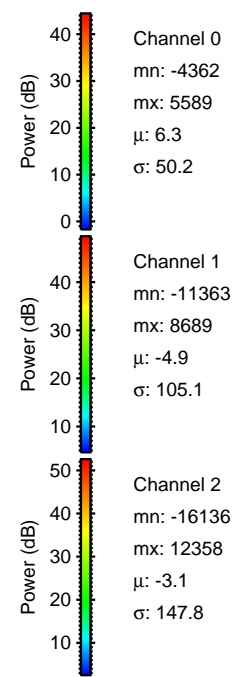
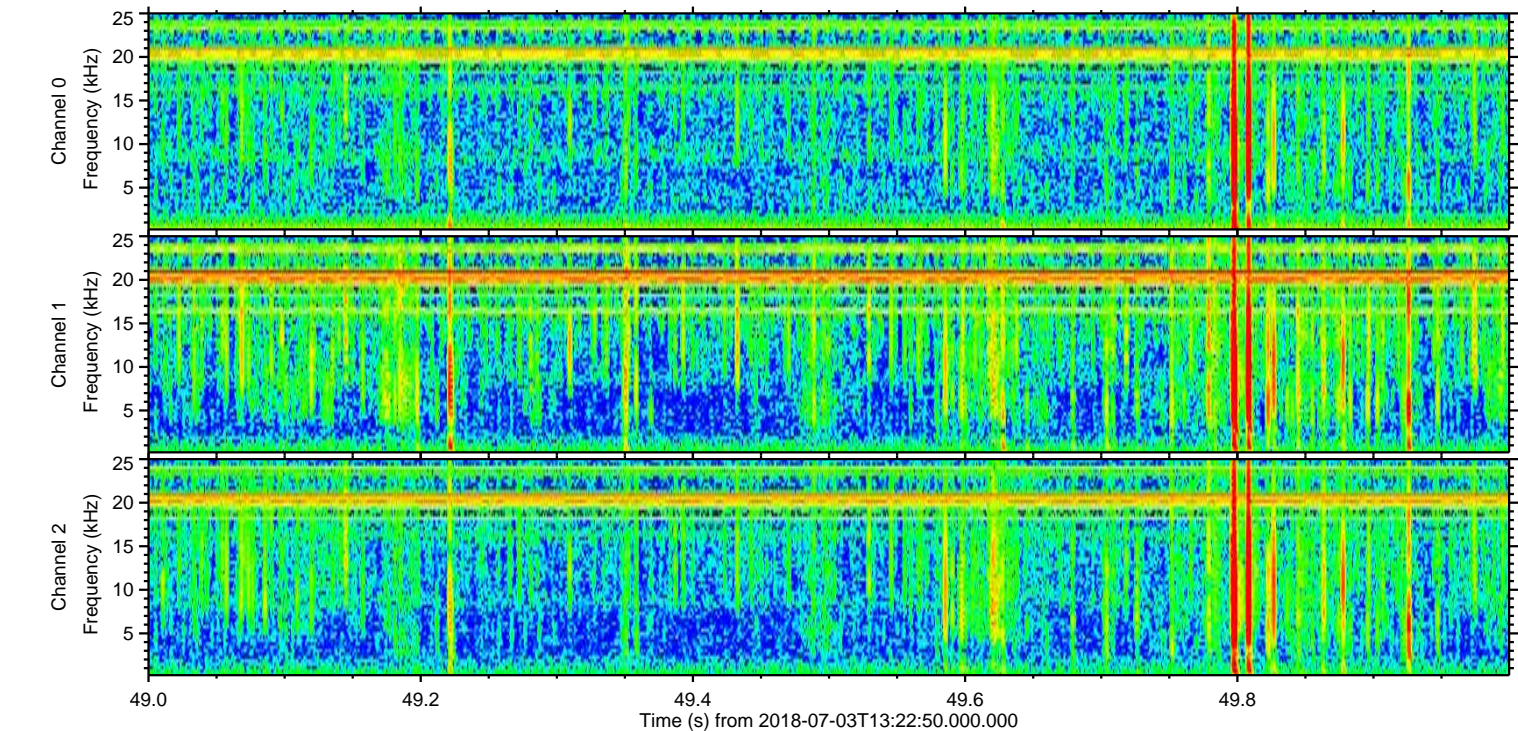
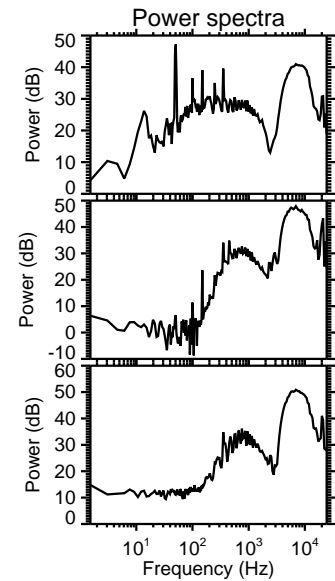
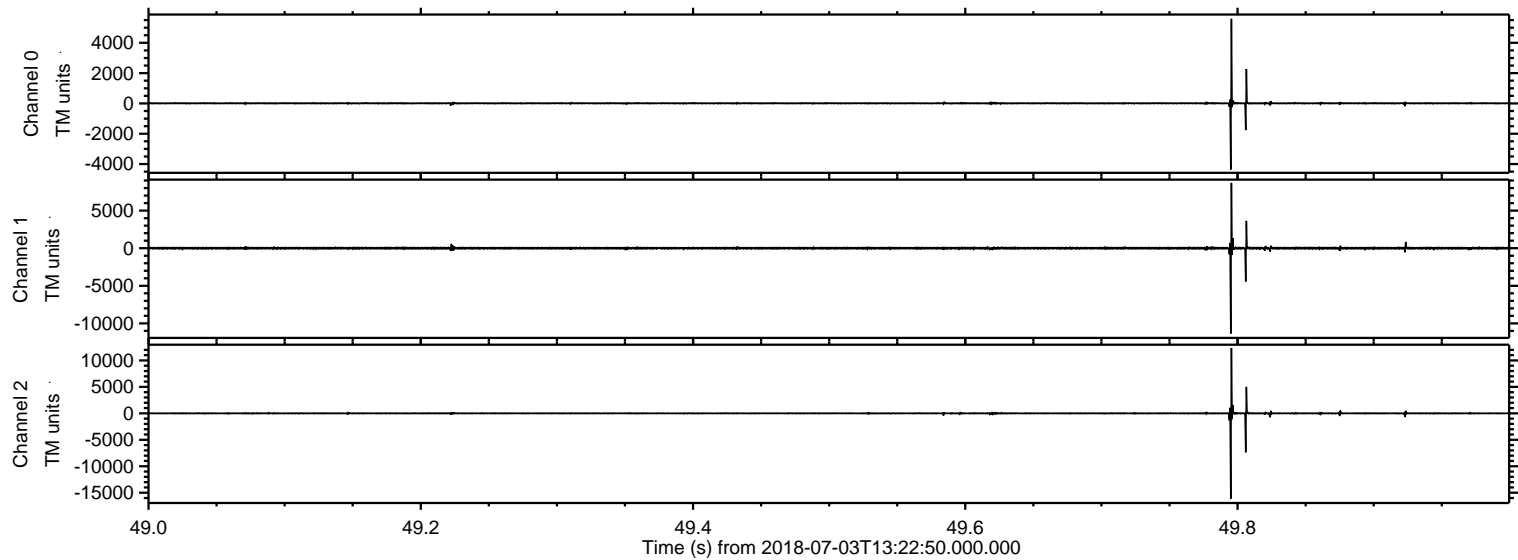


ELMAVAN 3D WAVEFORMS (Measured data sampled at 50 kHz) 51000 packets of 144 samples from 2018-07-03T13:22:50.000.000.

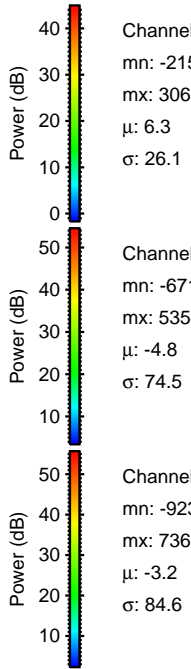
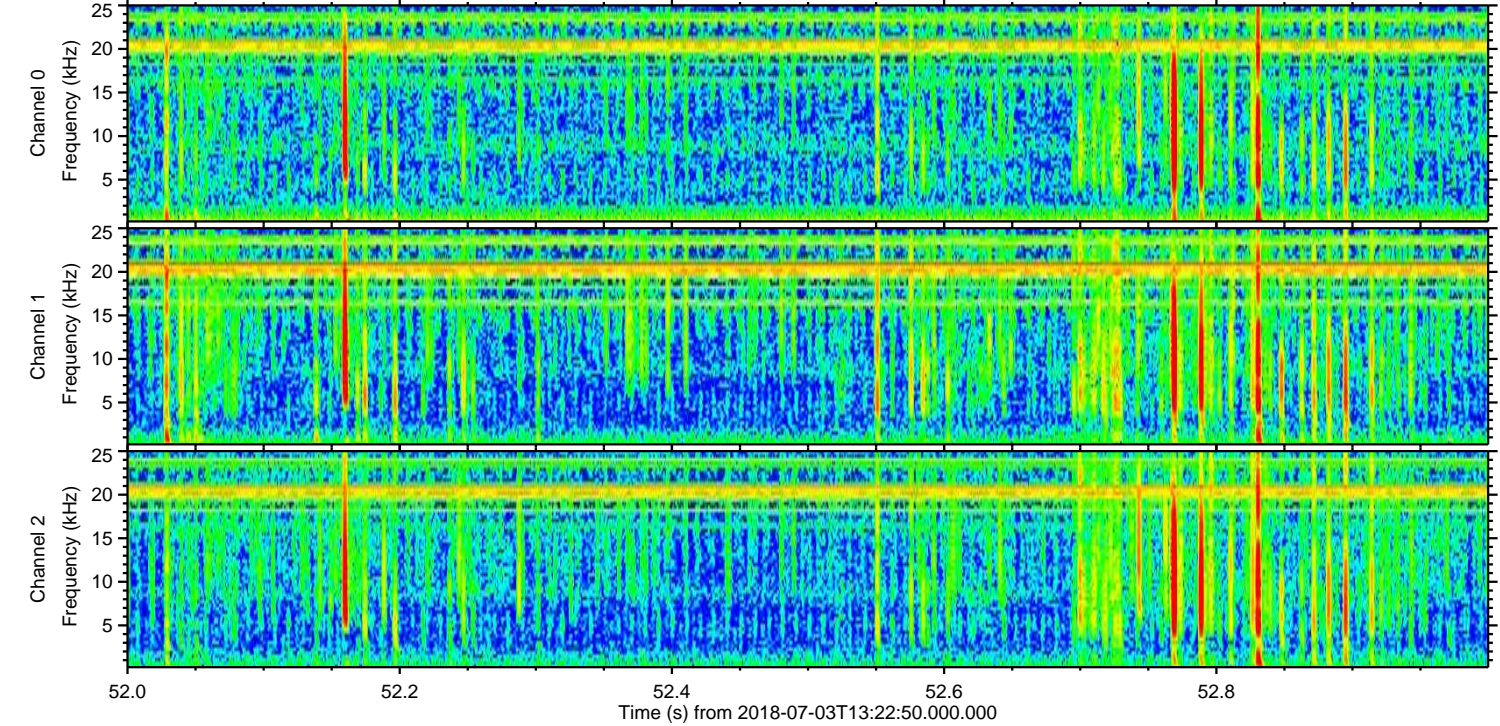
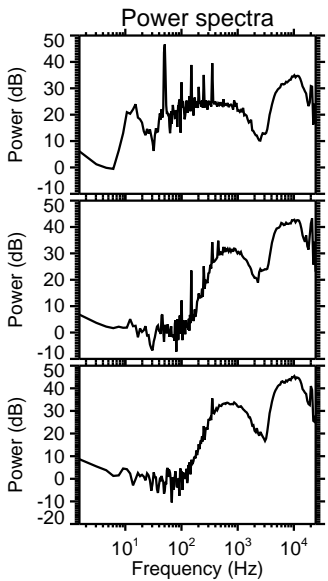
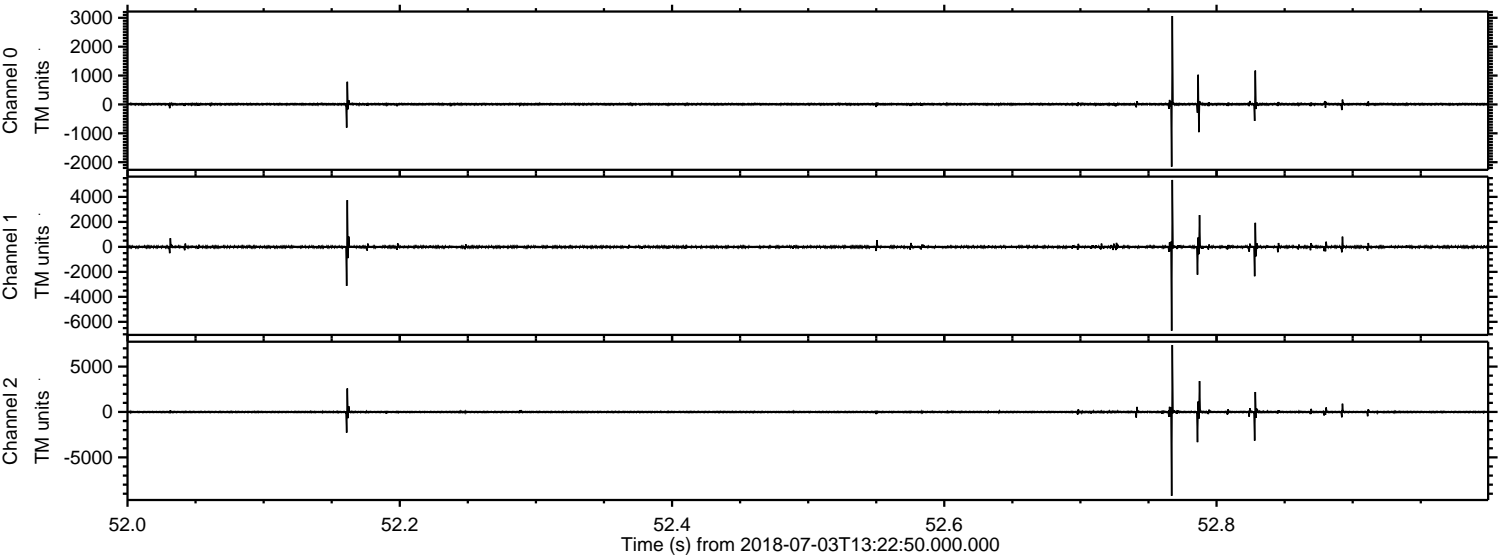
Processed Tue Jul 3 15:30:25 2018 by ELM ver.2012-10-06 from 001__elm20180703_132248__dat00.bin



Processed Tue Jul 3 15:30:31 2018 by ELM ver.2012-10-06 from 001__elm20180703_132248__dat00.bin



Processed Tue Jul 3 15:30:31 2018 by ELM ver.2012-10-06 from 001__elm20180703_132248__dat00.bin

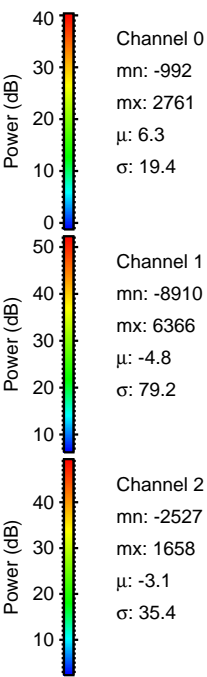
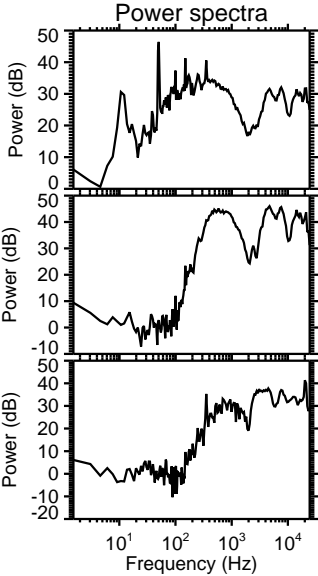
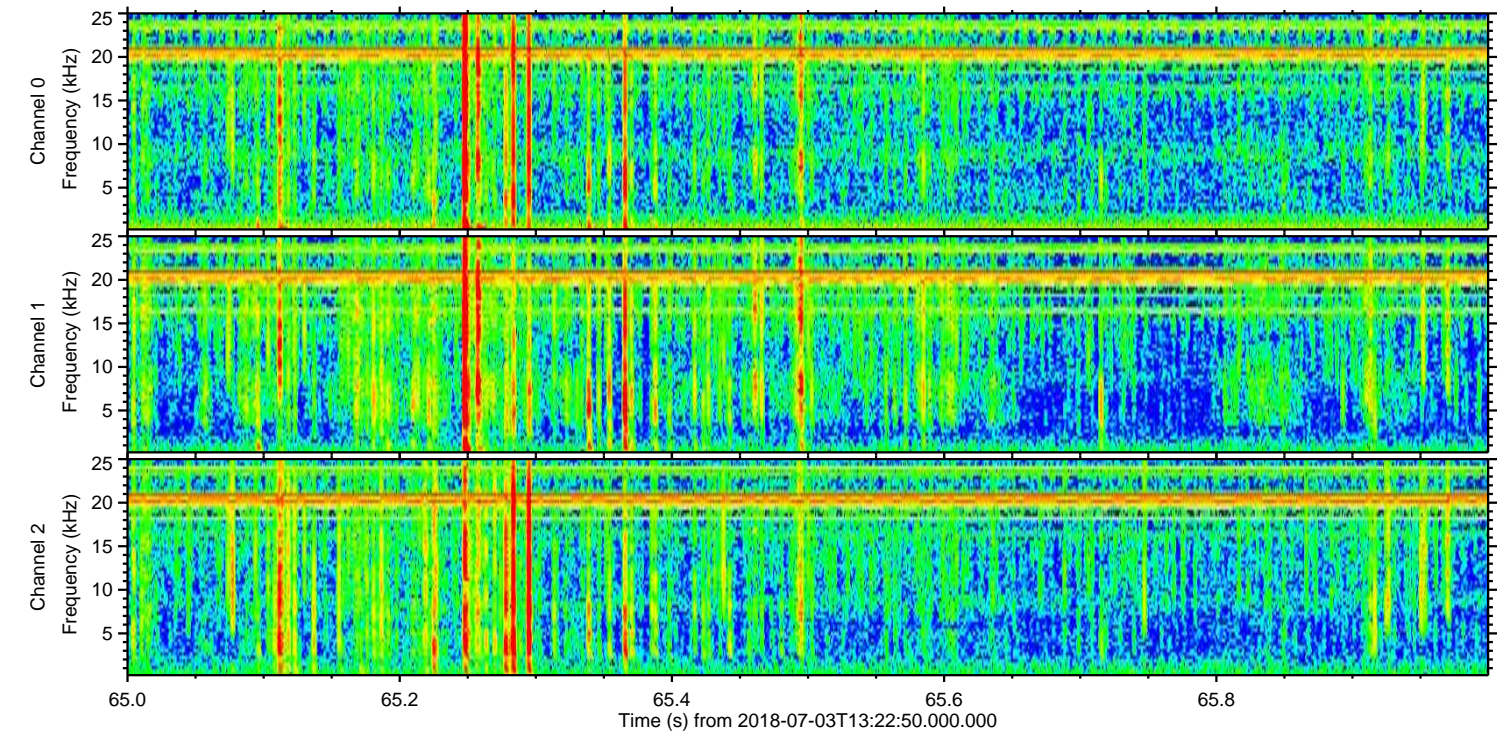
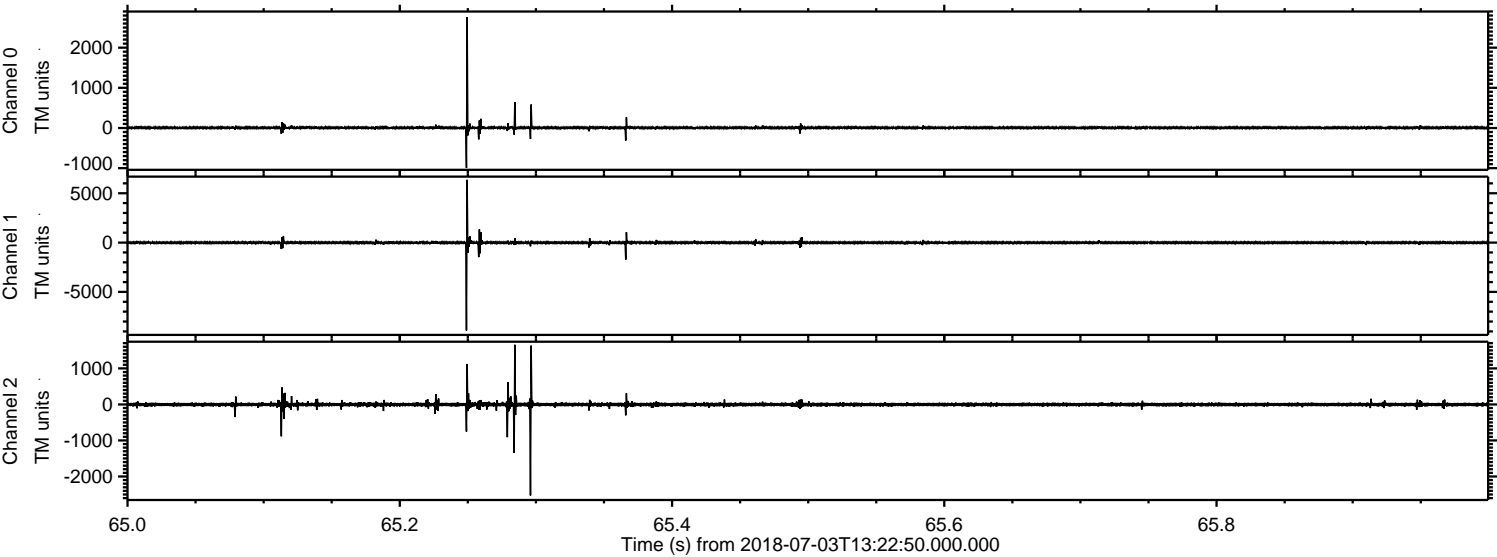


Channel 0
mn: -2157
mx: 3065
 μ : 6.3
 σ : 26.1

Channel 1
mn: -6711
mx: 5354
 μ : -4.8
 σ : 74.5

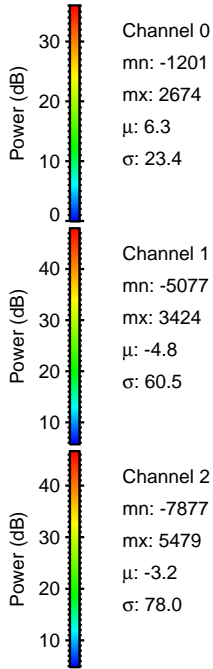
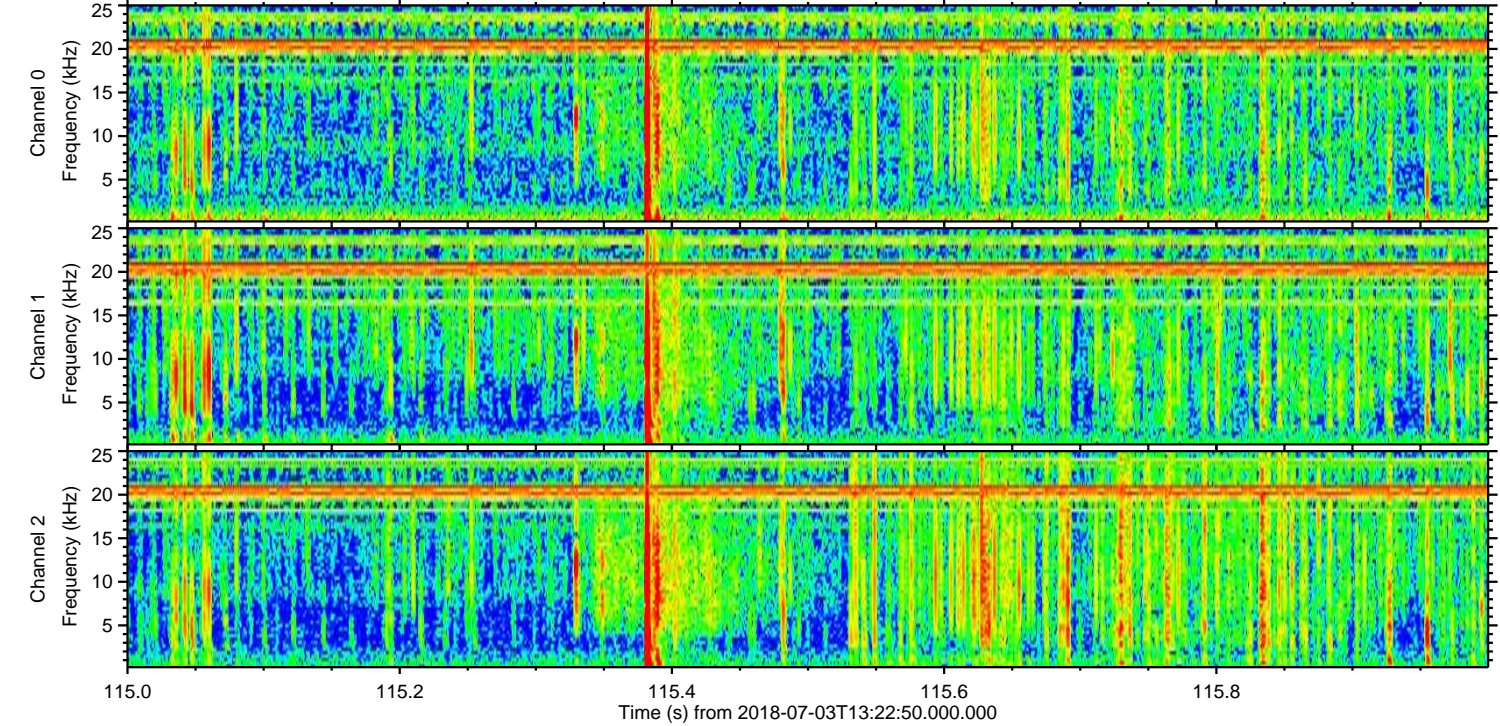
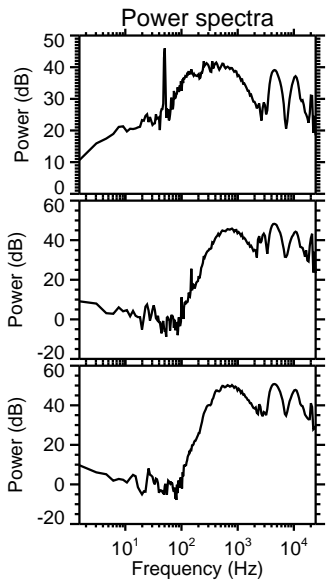
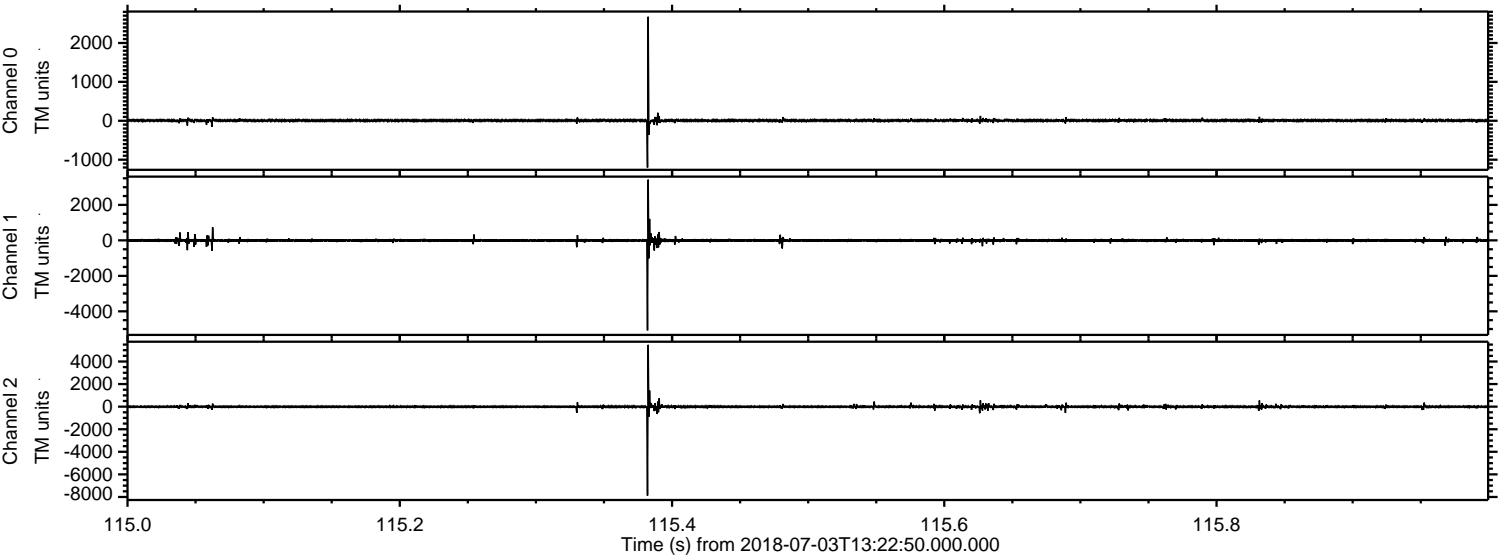
Channel 2
mn: -9230
mx: 7366
 μ : -3.2
 σ : 84.6

Processed Tue Jul 3 15:30:32 2018 by ELM ver.2012-10-06 from 001__elm20180703_132248__dat00.bin

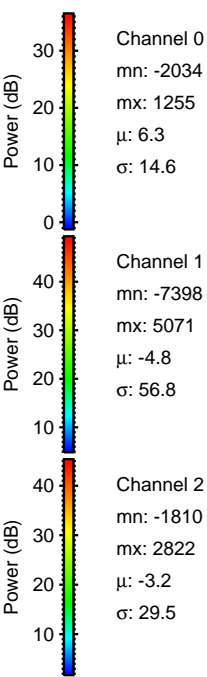
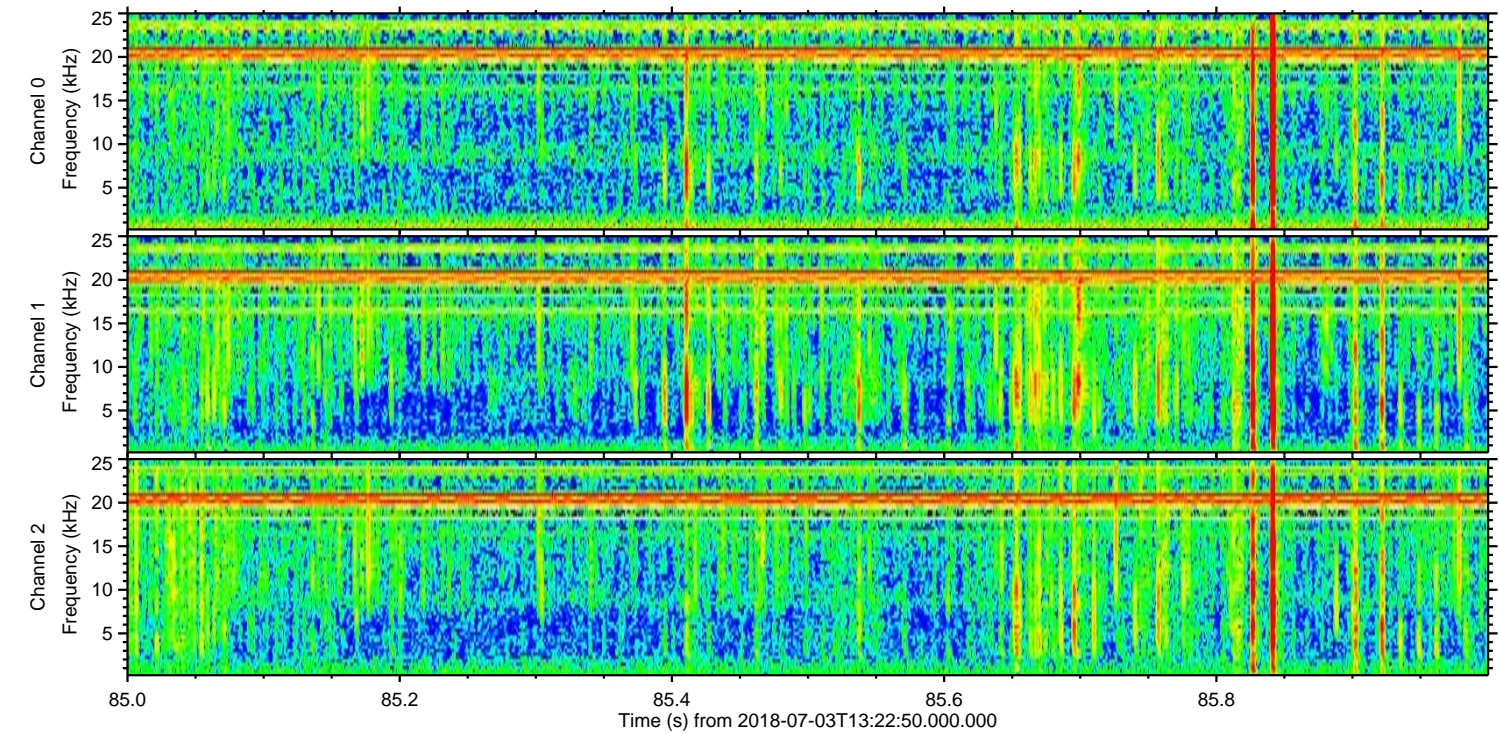
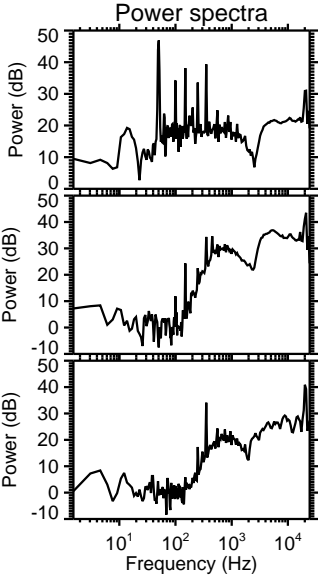
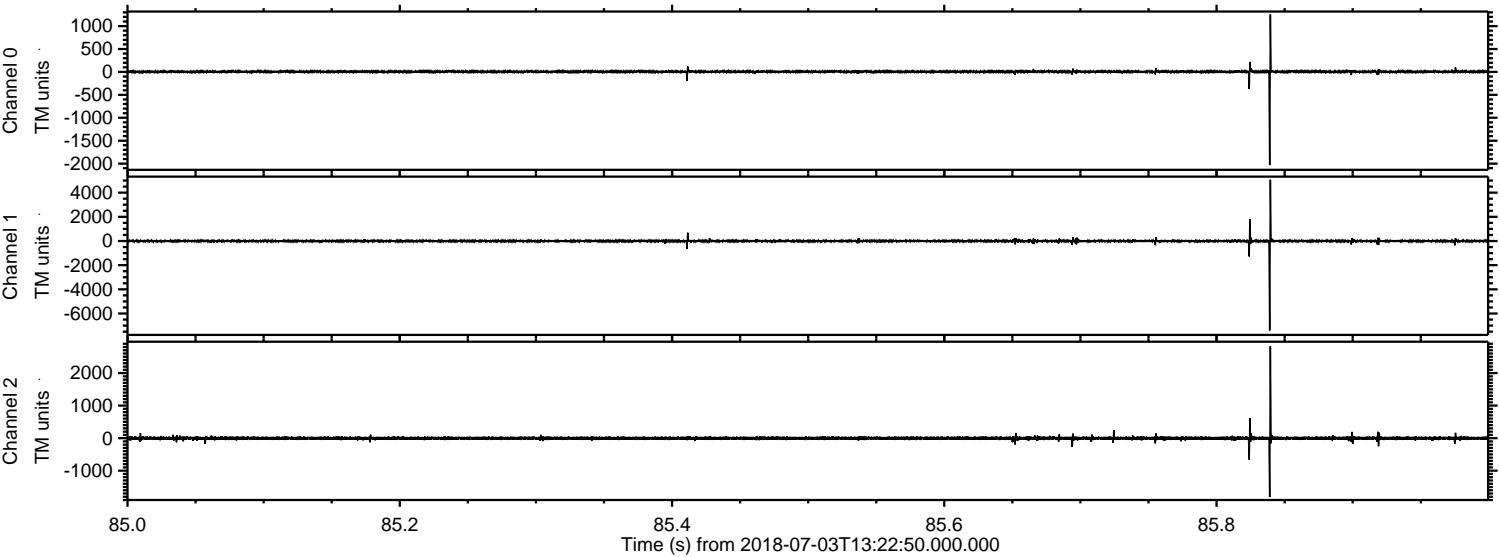


ELMAVAN 3D WAVEFORMS (Measured data sampled at 50 kHz) 51000 packets of 144 samples from 2018-07-03T13:22:50.000.000. Part 116/147

Processed Tue Jul 3 15:30:33 2018 by ELM ver.2012-10-06 from 001__elm20180703_132248__dat00.bin

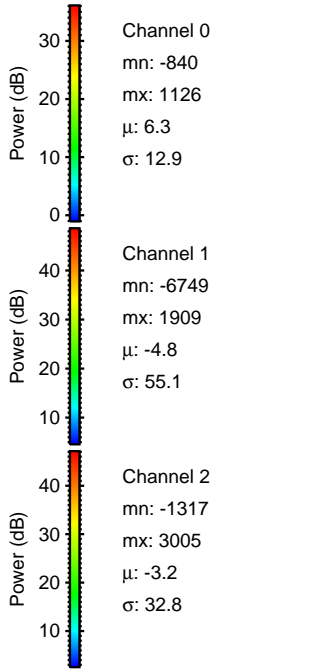
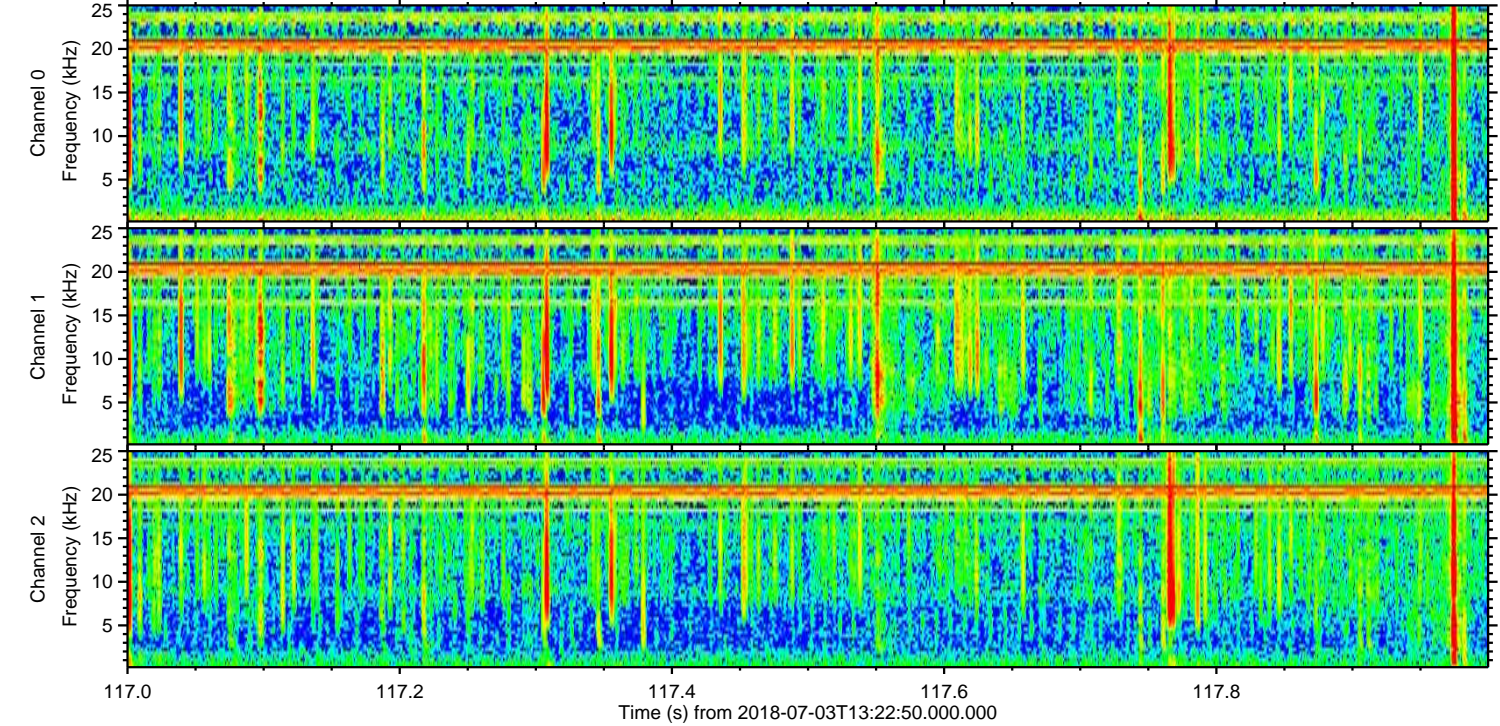
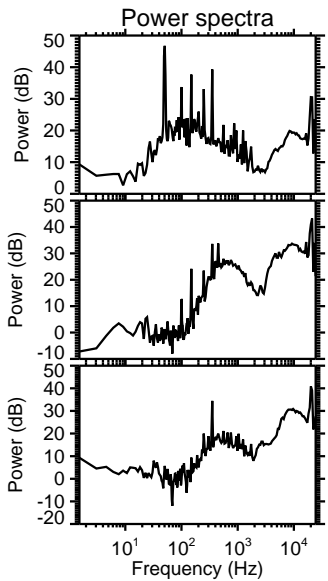
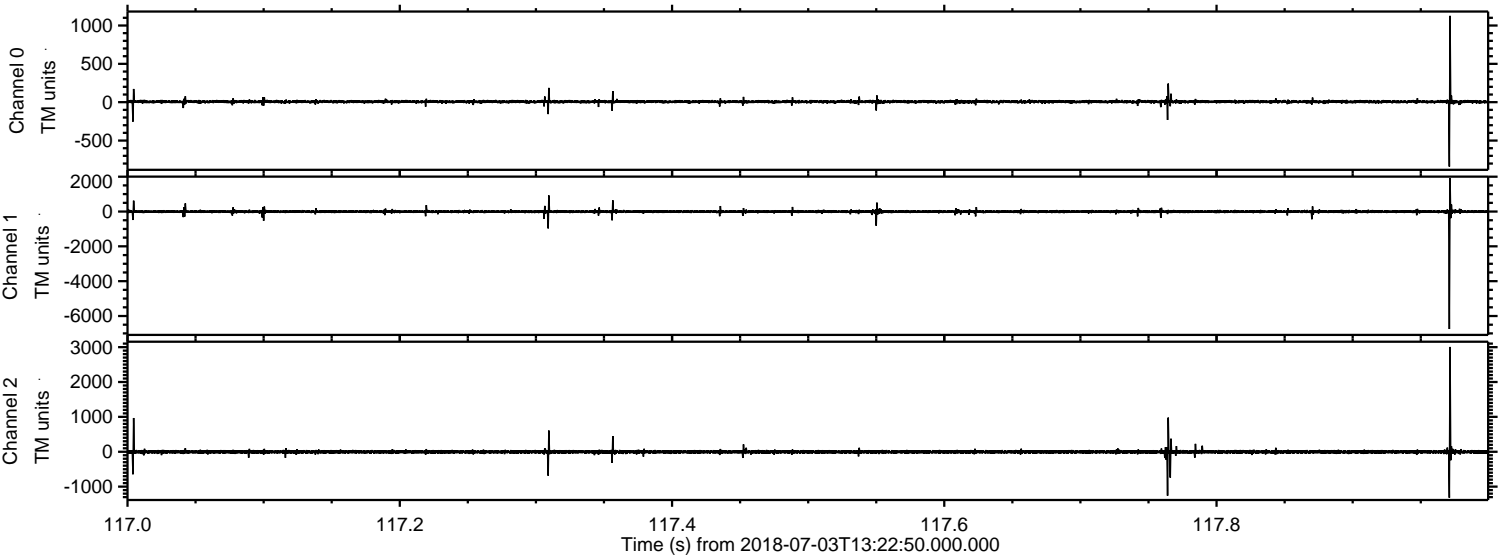


Processed Tue Jul 3 15:30:33 2018 by ELM ver.2012-10-06 from 001__elm20180703_132248__dat00.bin

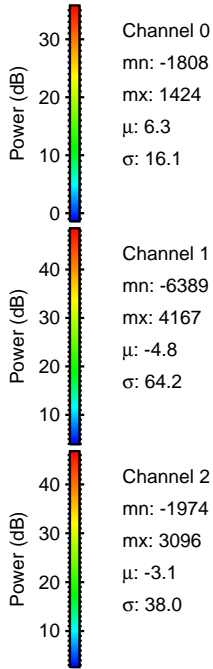
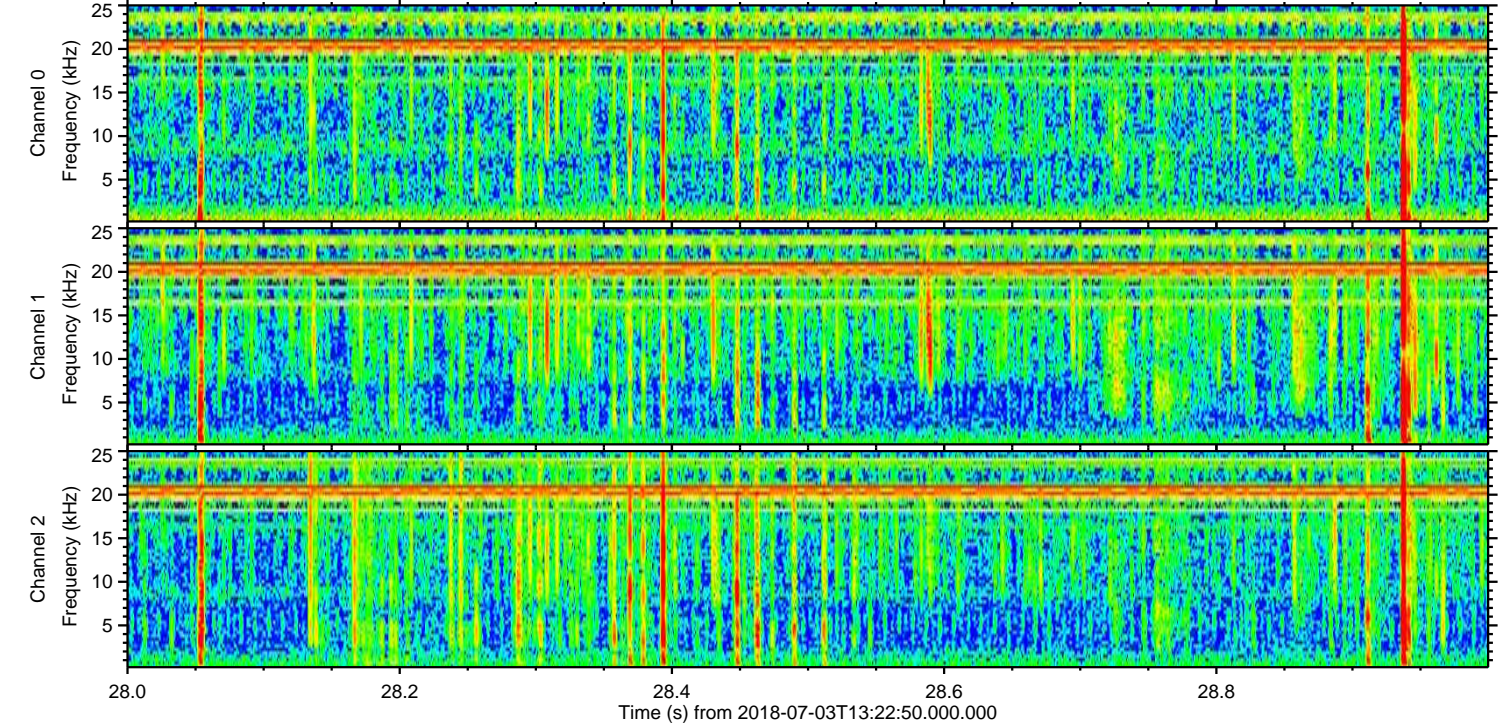
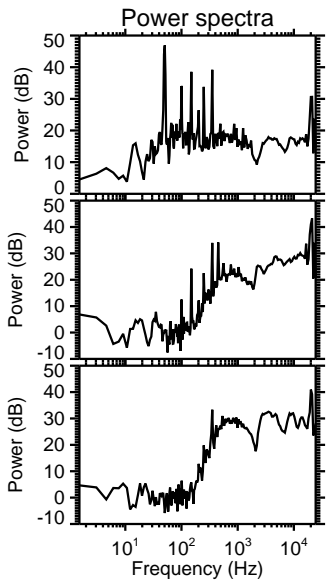
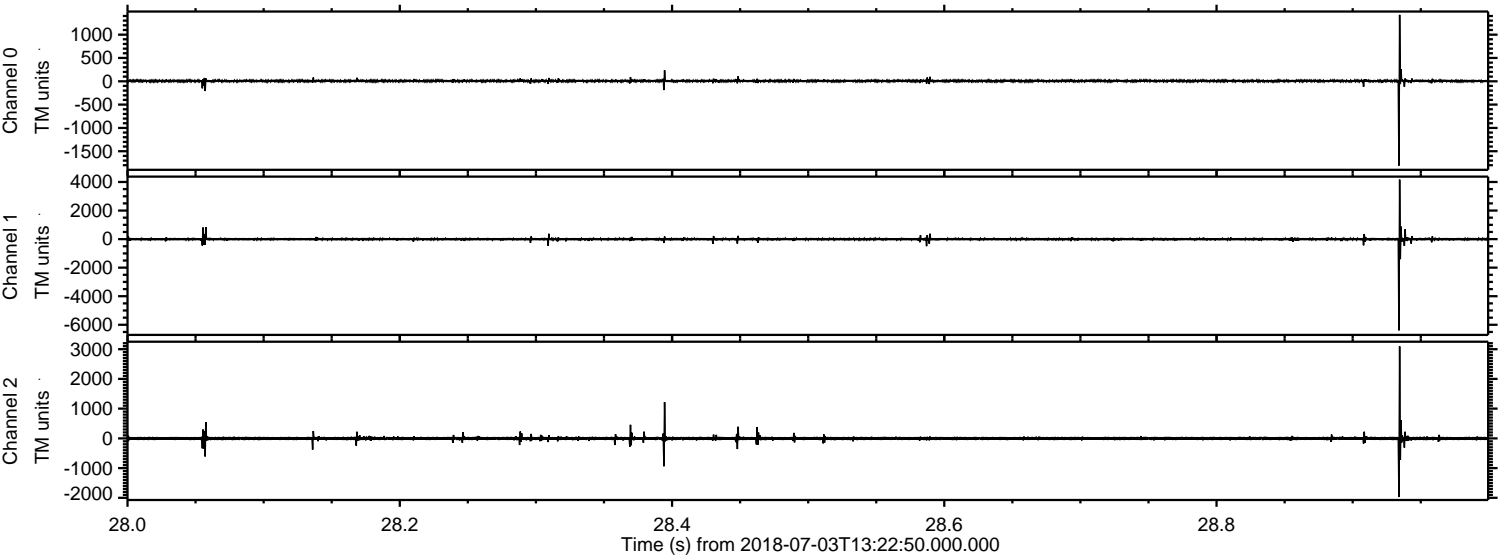


ELMAVAN 3D WAVEFORMS (Measured data sampled at 50 kHz) 51000 packets of 144 samples from 2018-07-03T13:22:50.000.000. Part 118/147

Processed Tue Jul 3 15:30:34 2018 by ELM ver.2012-10-06 from 001__elm20180703_132248__dat00.bin



Processed Tue Jul 3 15:30:35 2018 by ELM ver.2012-10-06 from 001__elm20180703_132248__dat00.bin

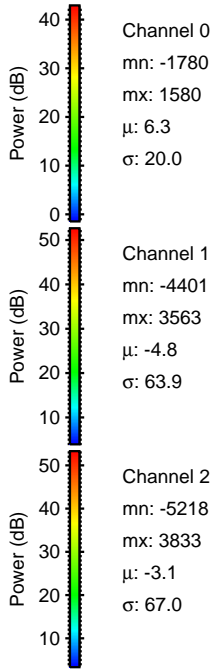
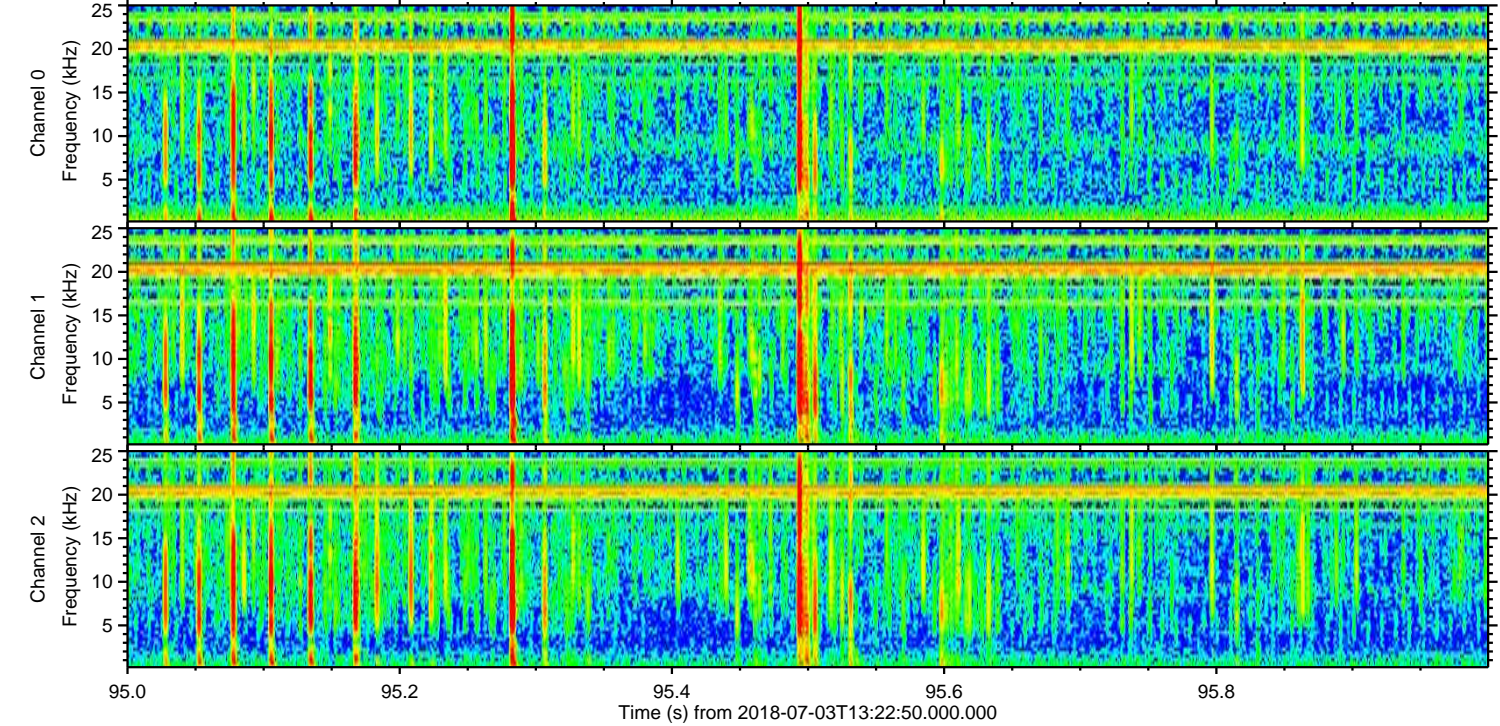
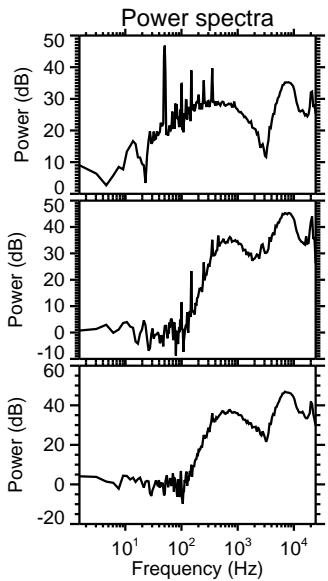
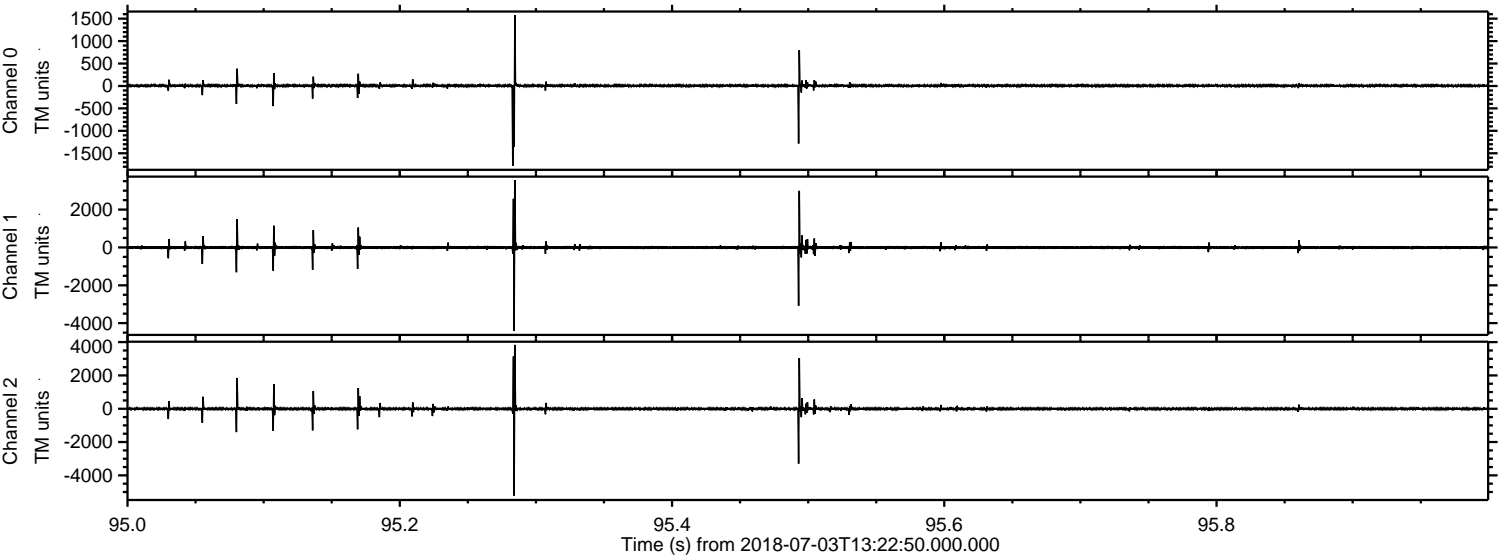


Channel 0
mn: -1808
mx: 1424
 μ : 6.3
 σ : 16.1

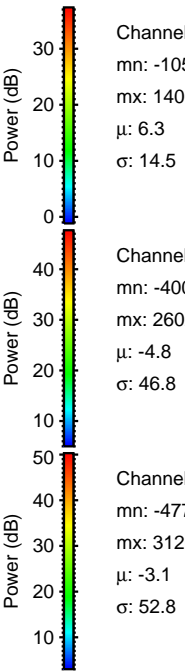
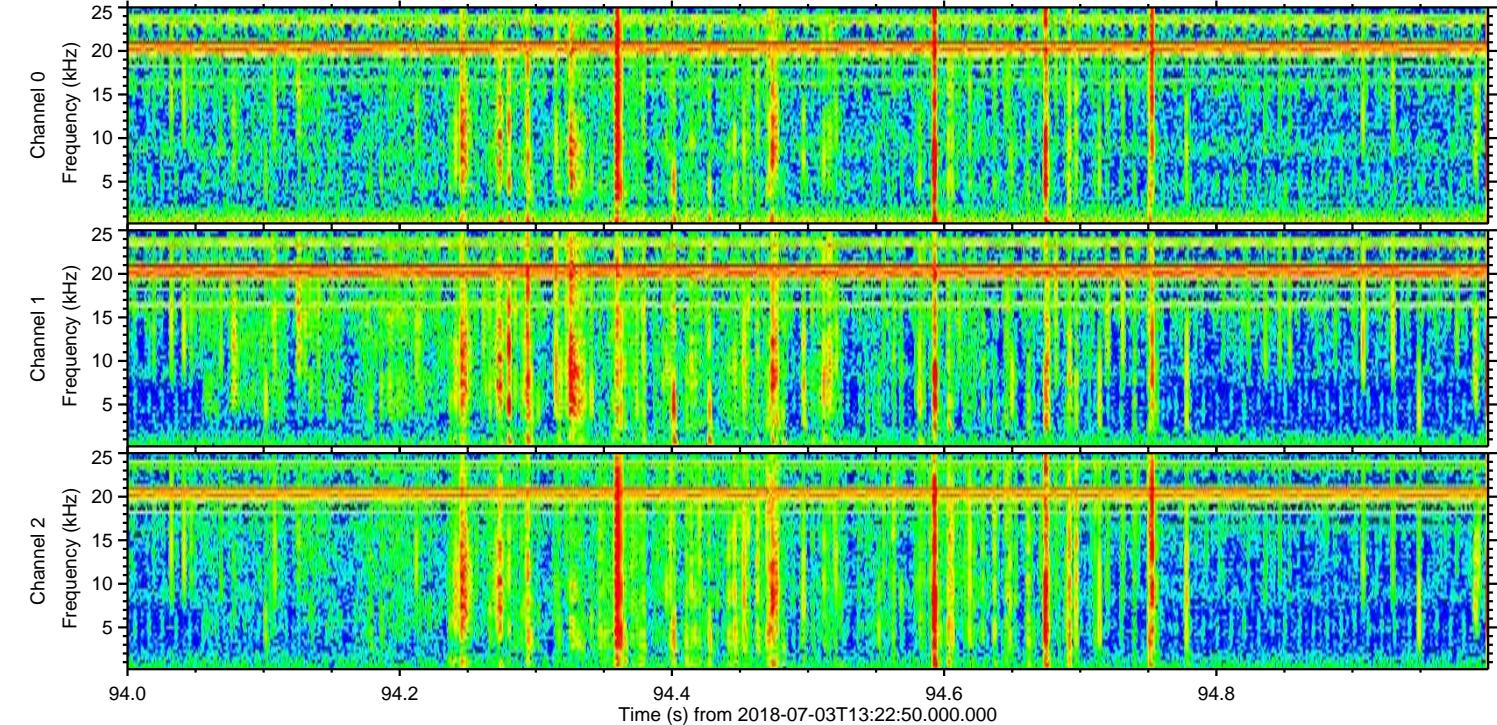
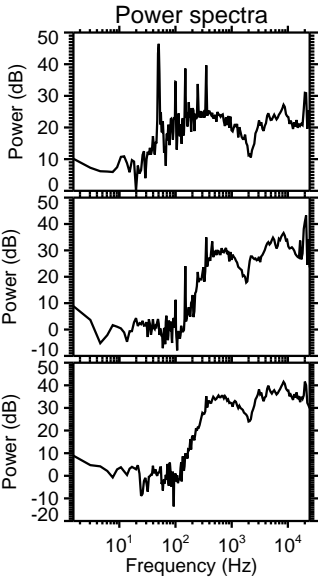
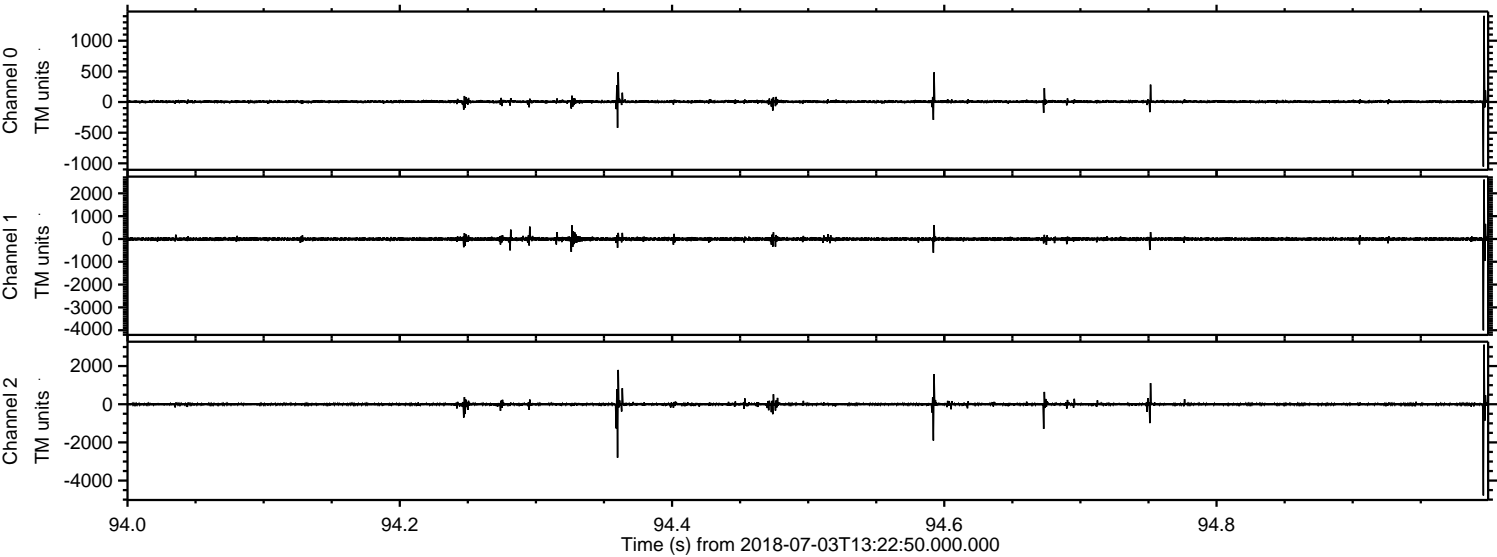
Channel 1
mn: -6389
mx: 4167
 μ : -4.8
 σ : 64.2

Channel 2
mn: -1974
mx: 3096
 μ : -3.1
 σ : 38.0

Processed Tue Jul 3 15:30:35 2018 by ELM ver.2012-10-06 from 001__elm20180703_132248__dat00.bin



Processed Tue Jul 3 15:30:36 2018 by ELM ver.2012-10-06 from 001__elm20180703_132248__dat00.bin



Processed Tue Jul 3 15:30:36 2018 by ELM ver.2012-10-06 from 001__elm20180703_132248__dat00.bin

