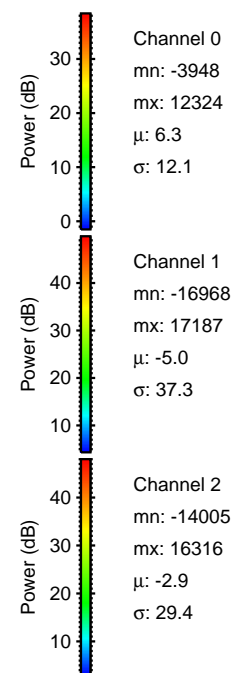
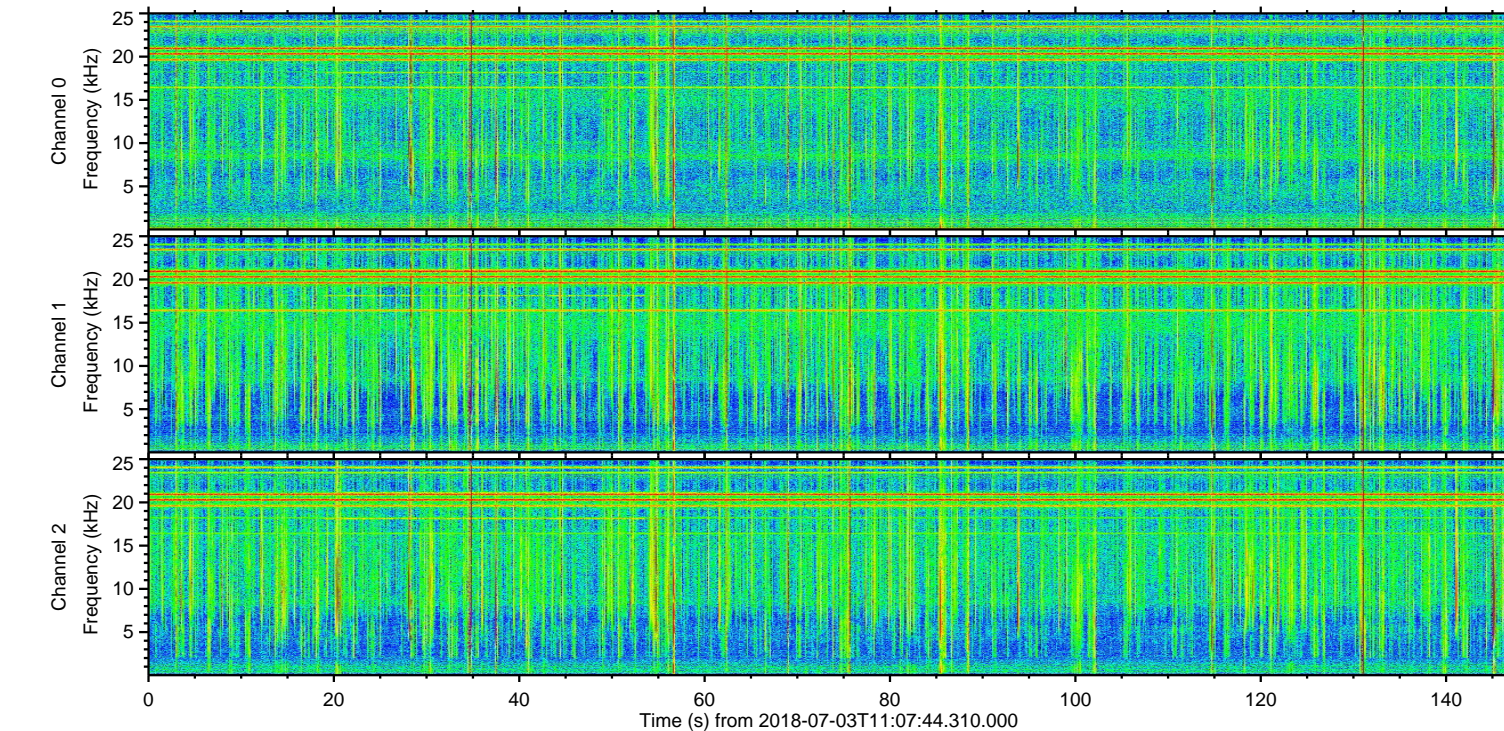
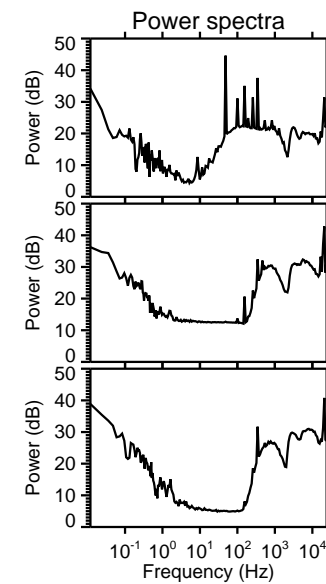
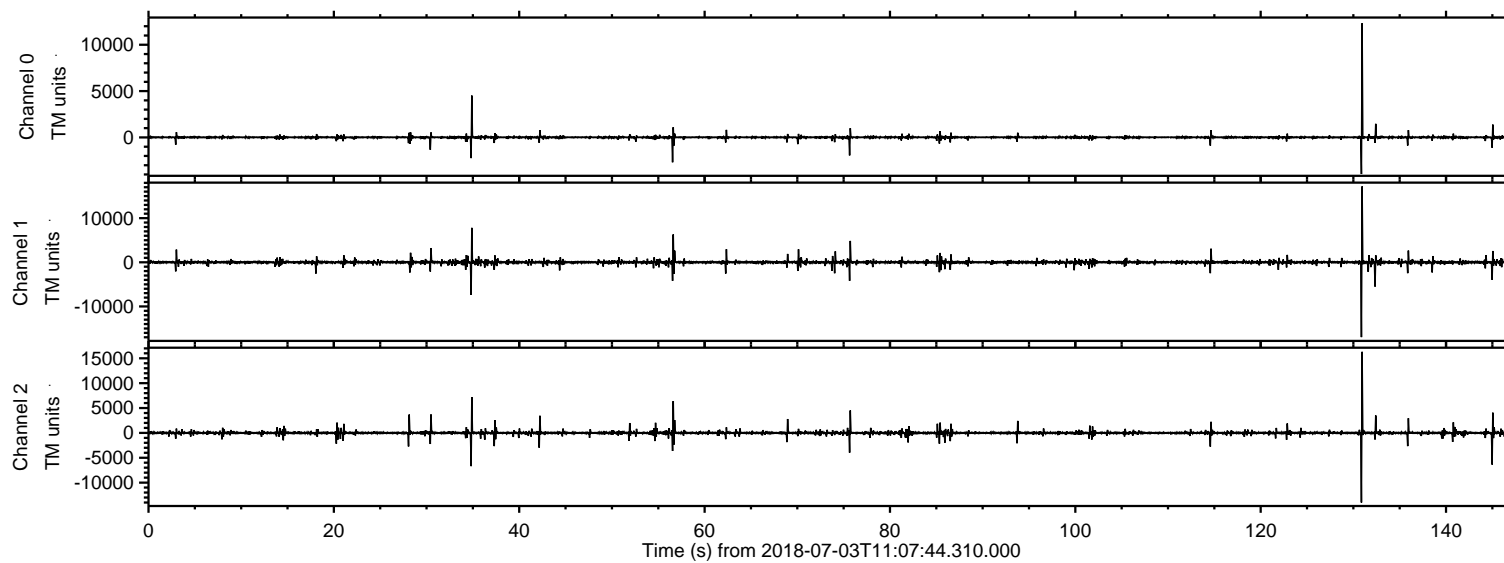


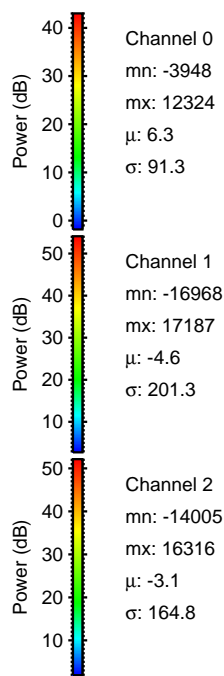
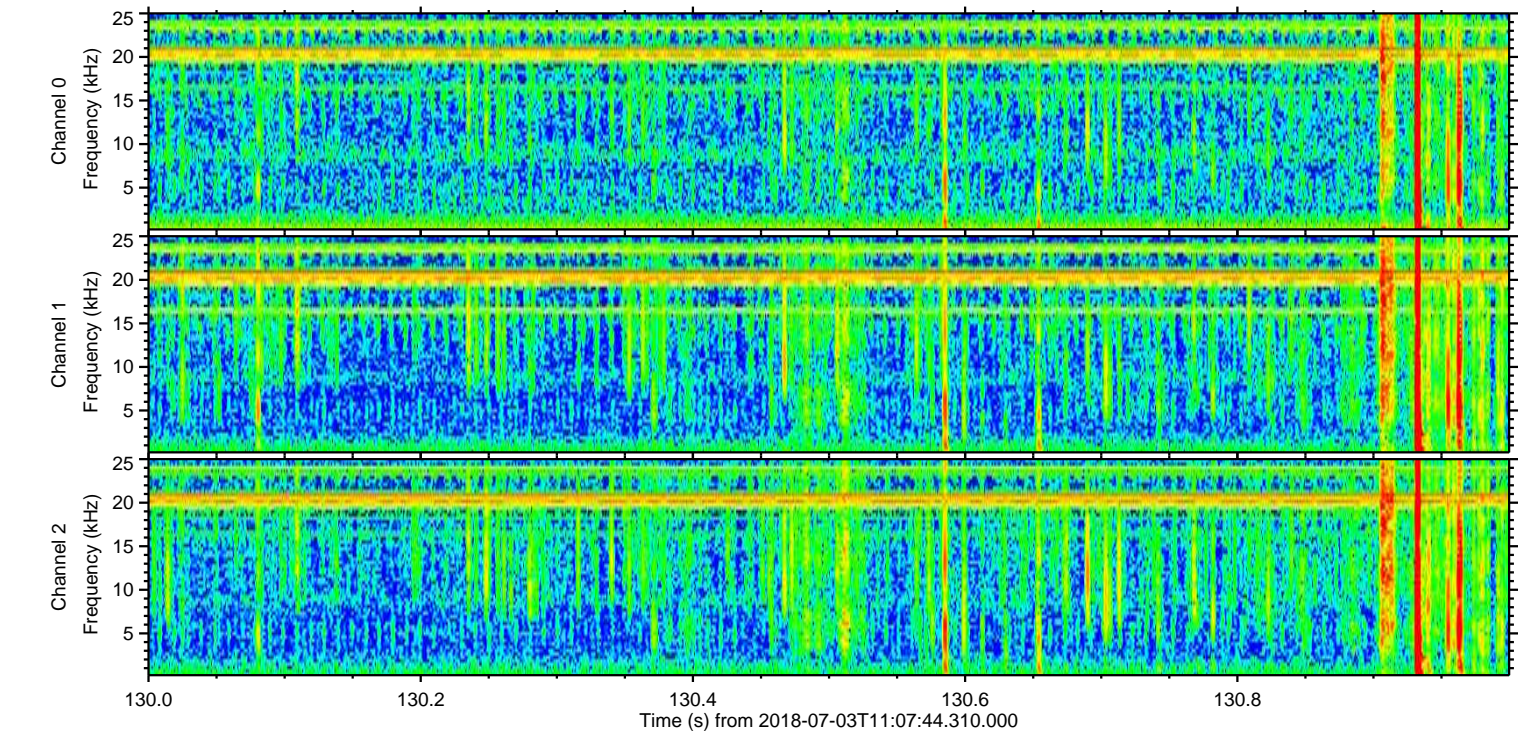
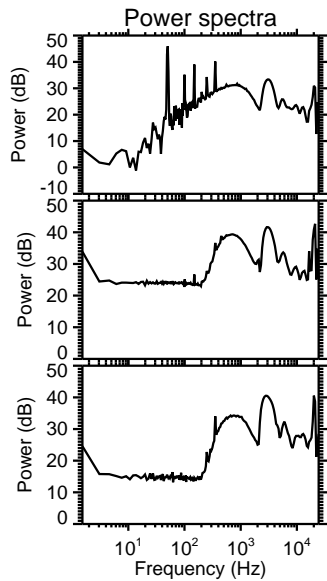
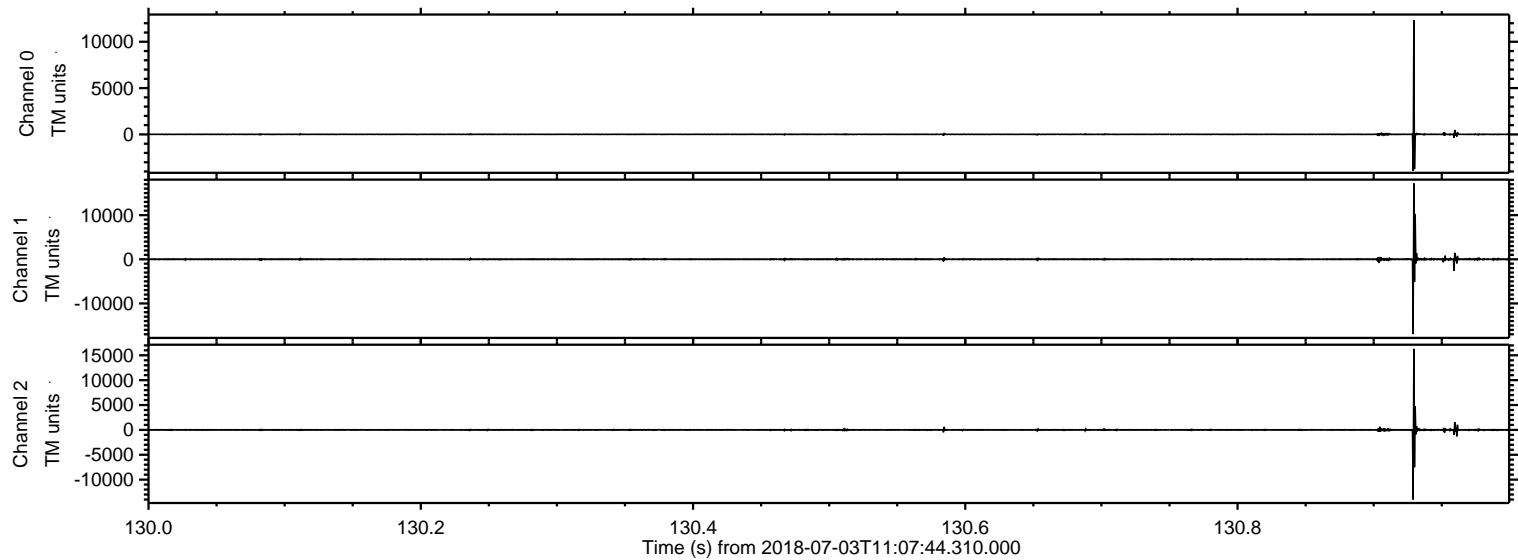
ELMAVAN 3D WAVEFORMS (Measured data sampled at 50 kHz) 51000 packets of 144 samples from 2018-07-03T11:07:44.310.000.

Processed Tue Jul 3 13:15:37 2018 by ELM ver.2012-10-06 from 001__elm20180703_110743__dat00.bin

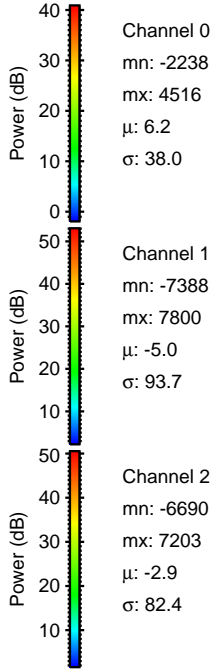
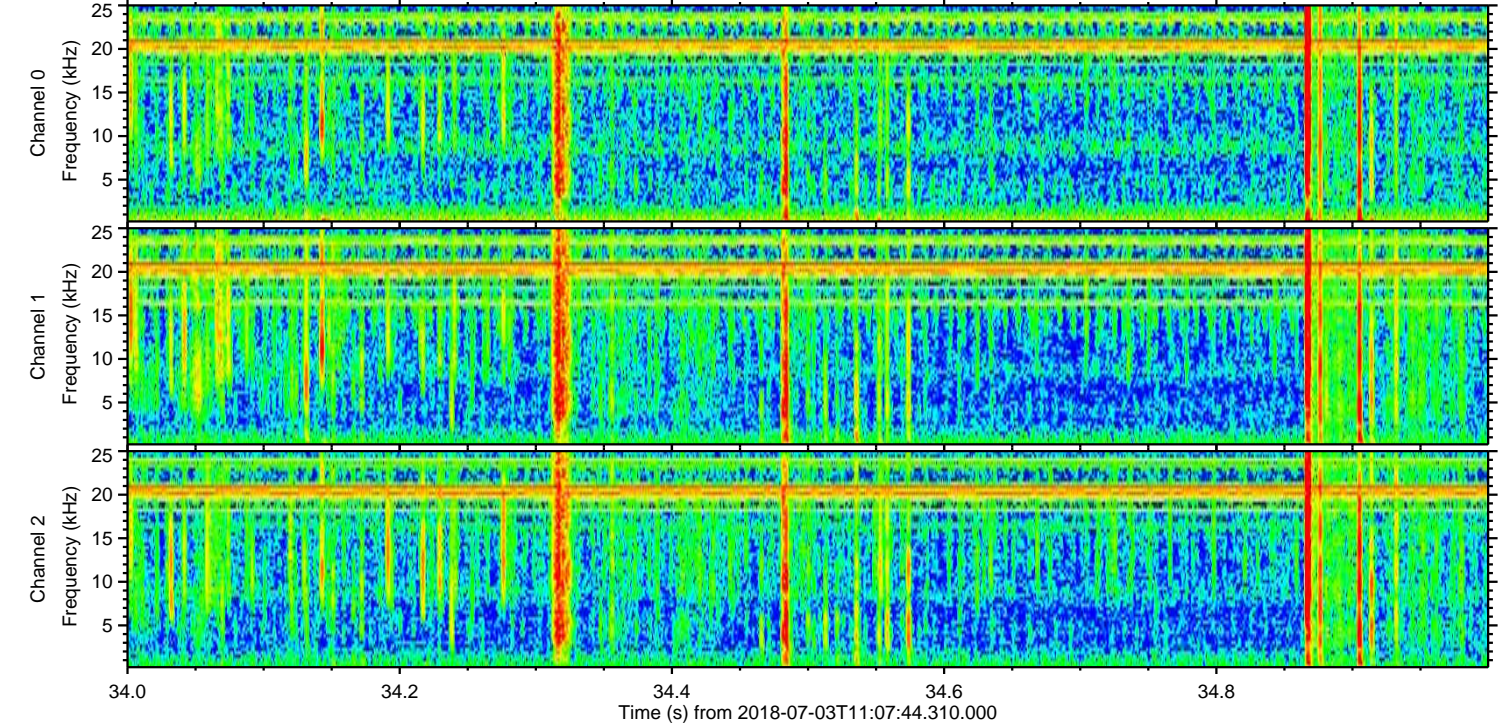
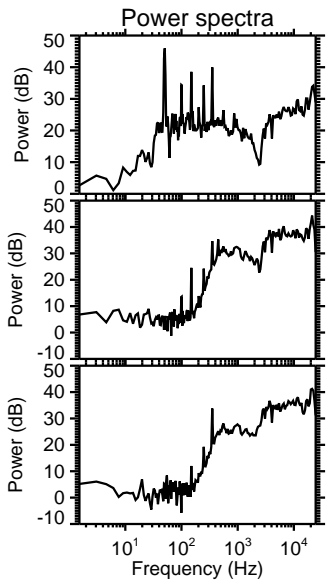
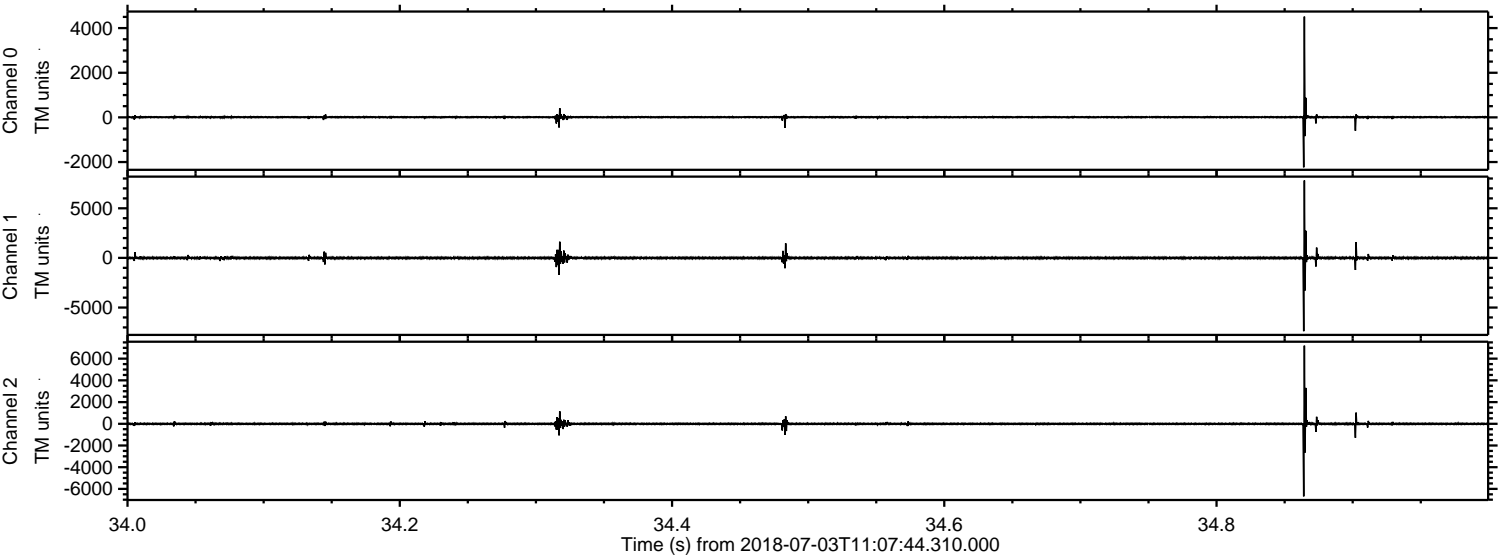


ELMAVAN 3D WAVEFORMS (Measured data sampled at 50 kHz) 51000 packets of 144 samples from 2018-07-03T11:07:44.310.000. Part 131/147

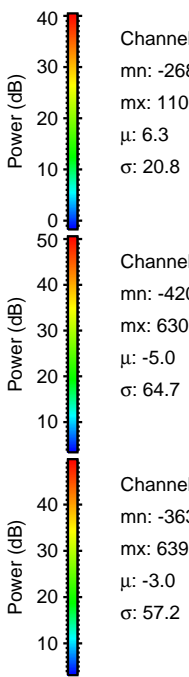
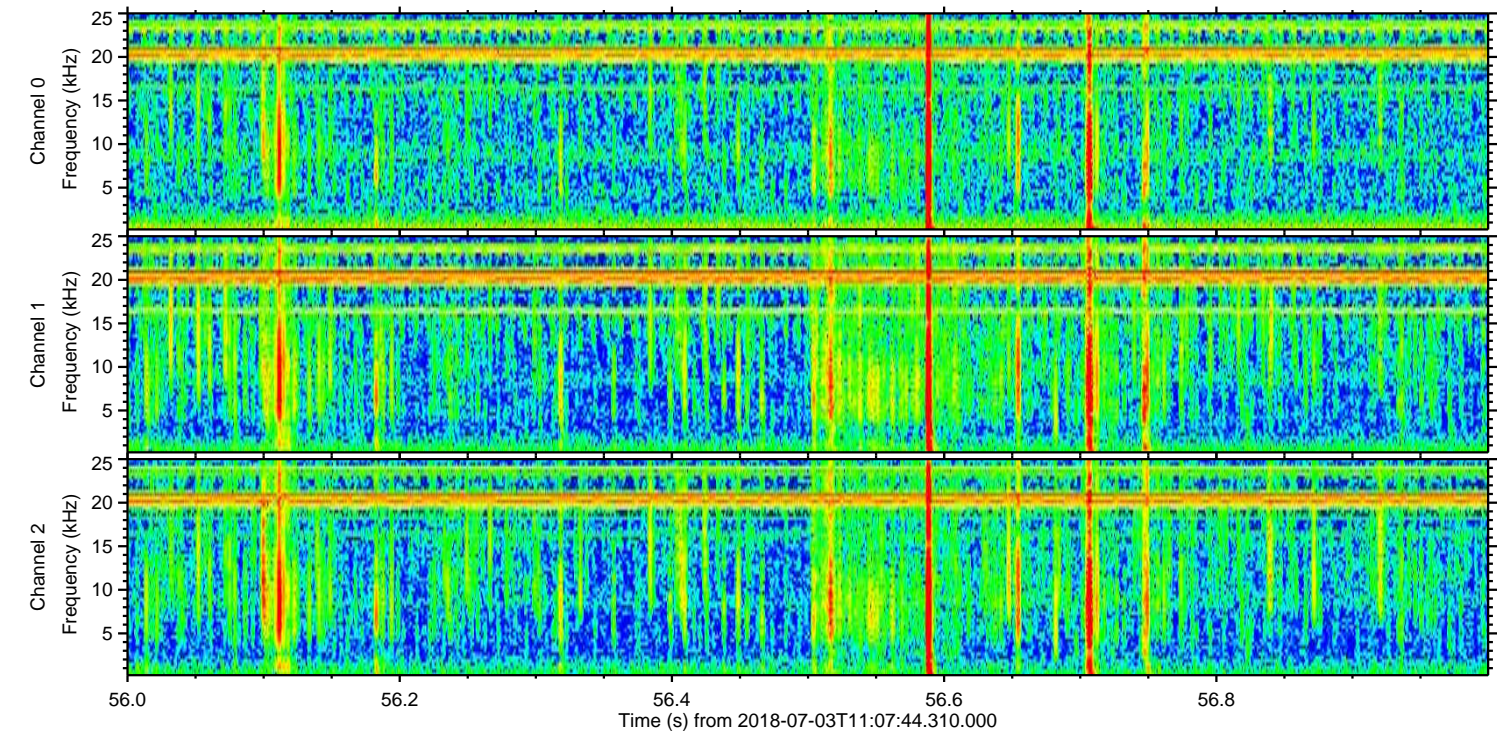
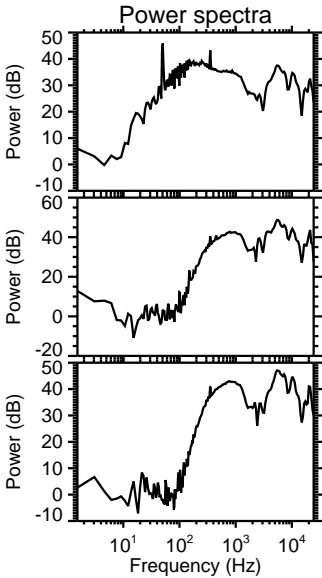
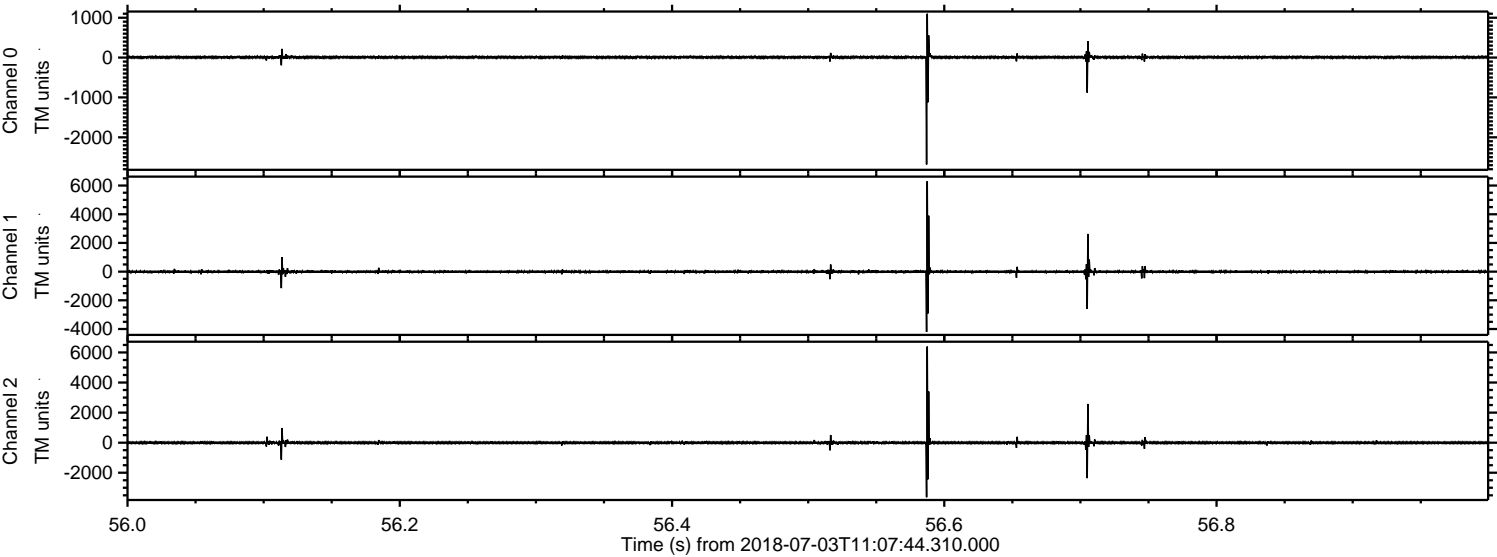
Processed Tue Jul 3 13:15:45 2018 by ELM ver.2012-10-06 from 001__elm20180703_110743__dat00.bin



Processed Tue Jul 3 13:15:46 2018 by ELM ver.2012-10-06 from 001__elm20180703_110743__dat00.bin

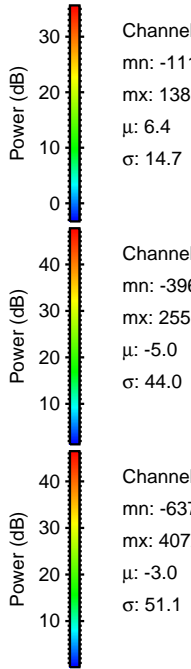
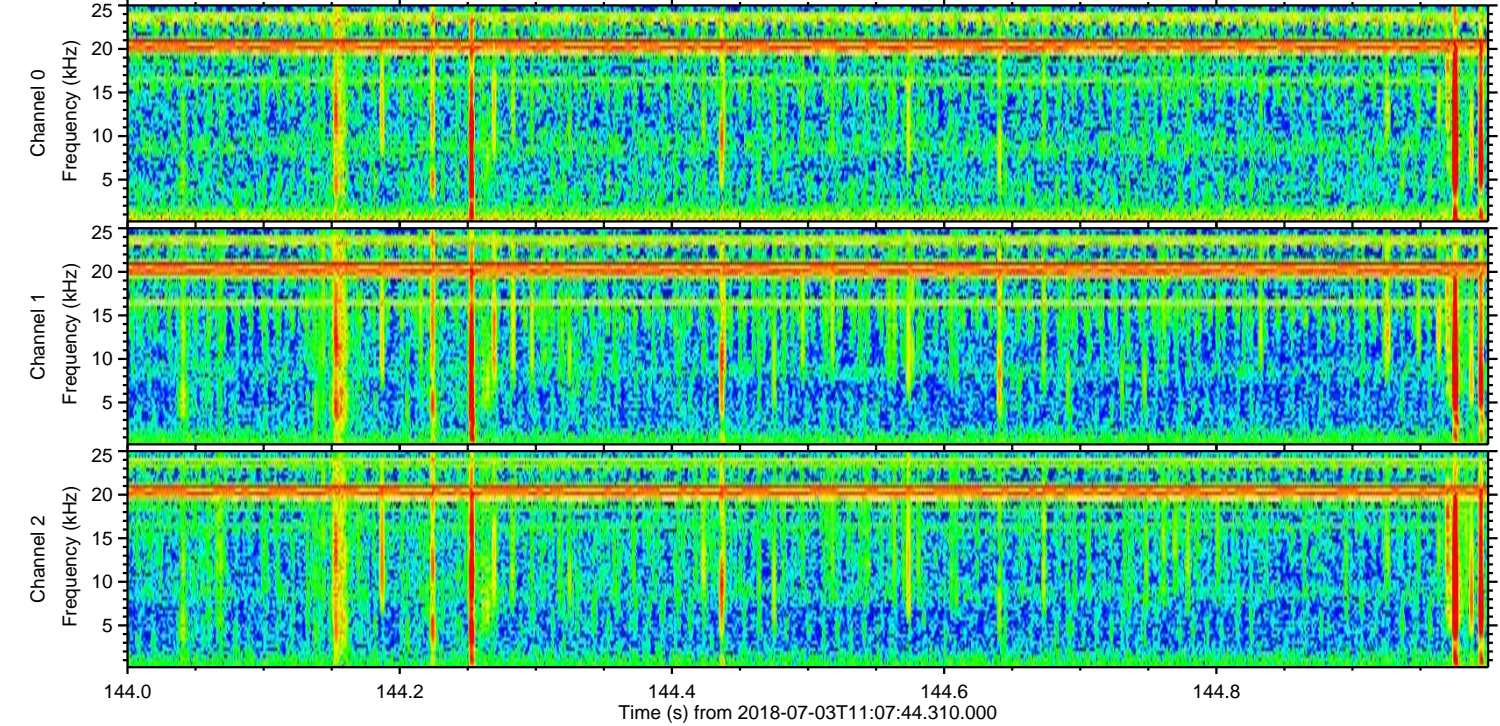
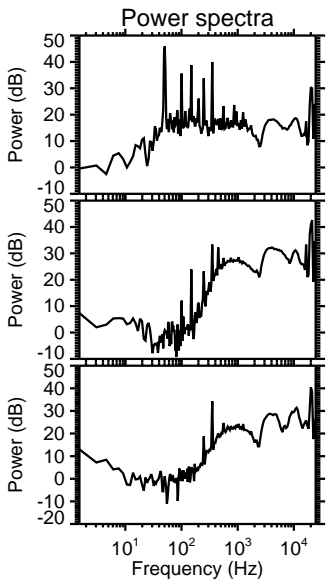
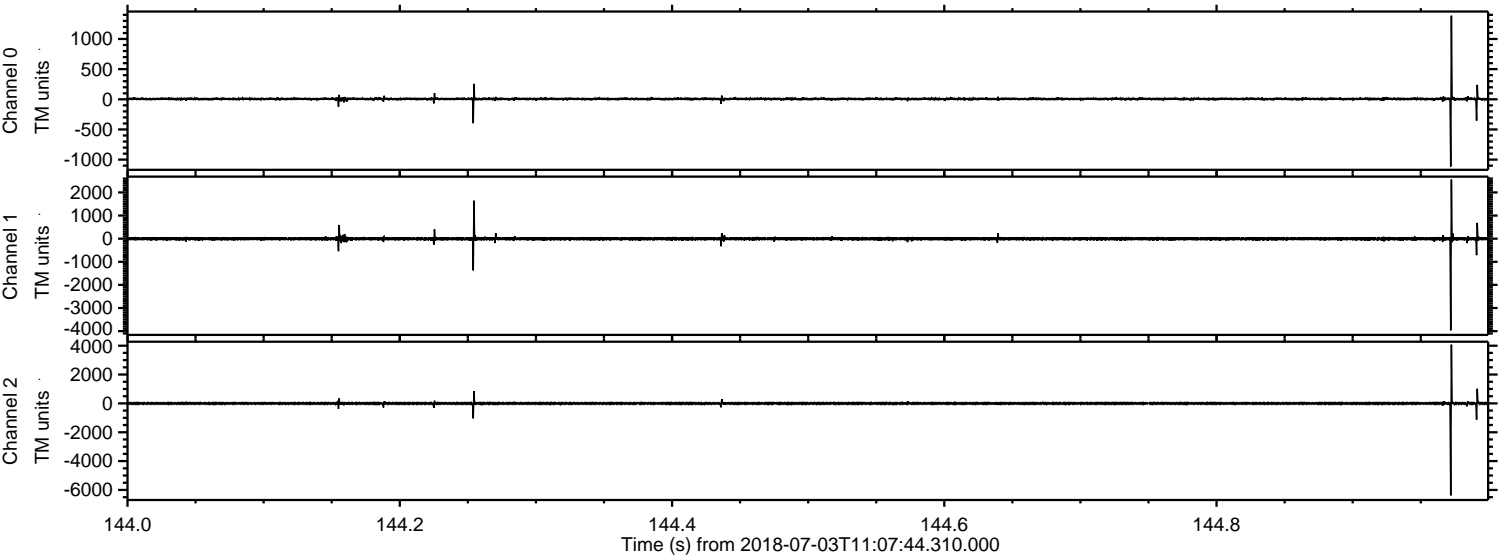


Processed Tue Jul 3 13:15:47 2018 by ELM ver.2012-10-06 from 001__elm20180703_110743__dat00.bin



ELMAVAN 3D WAVEFORMS (Measured data sampled at 50 kHz) 51000 packets of 144 samples from 2018-07-03T11:07:44.310.000. Part 145/147

Processed Tue Jul 3 13:15:47 2018 by ELM ver.2012-10-06 from 001__elm20180703_110743__dat00.bin



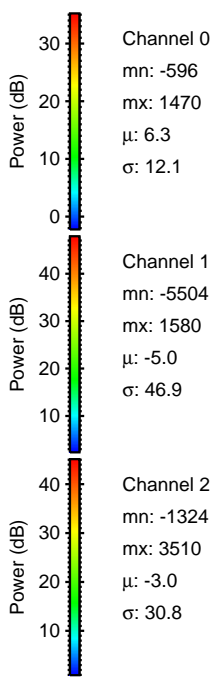
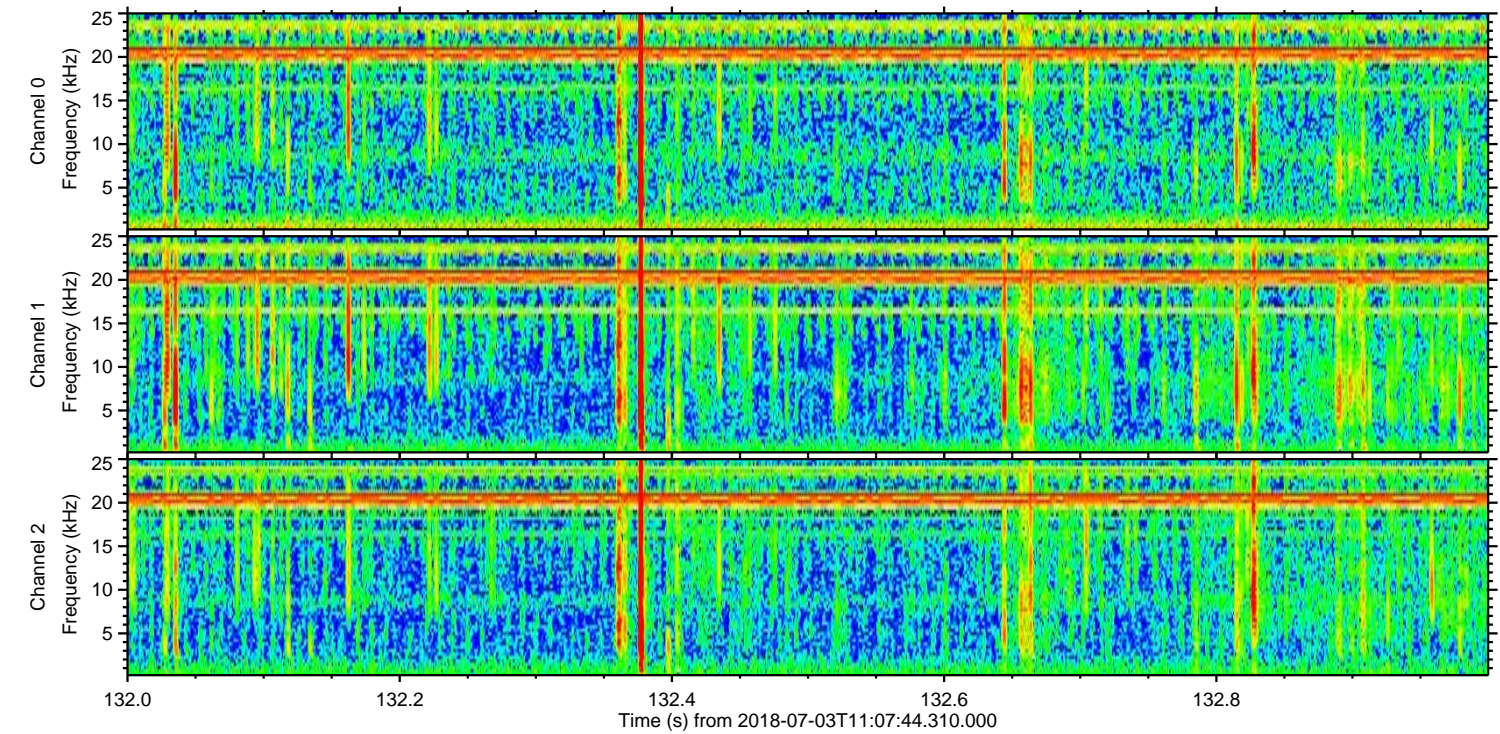
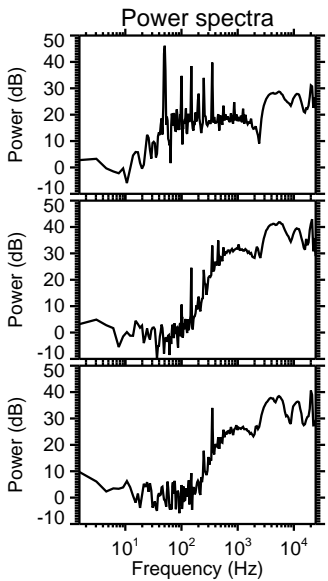
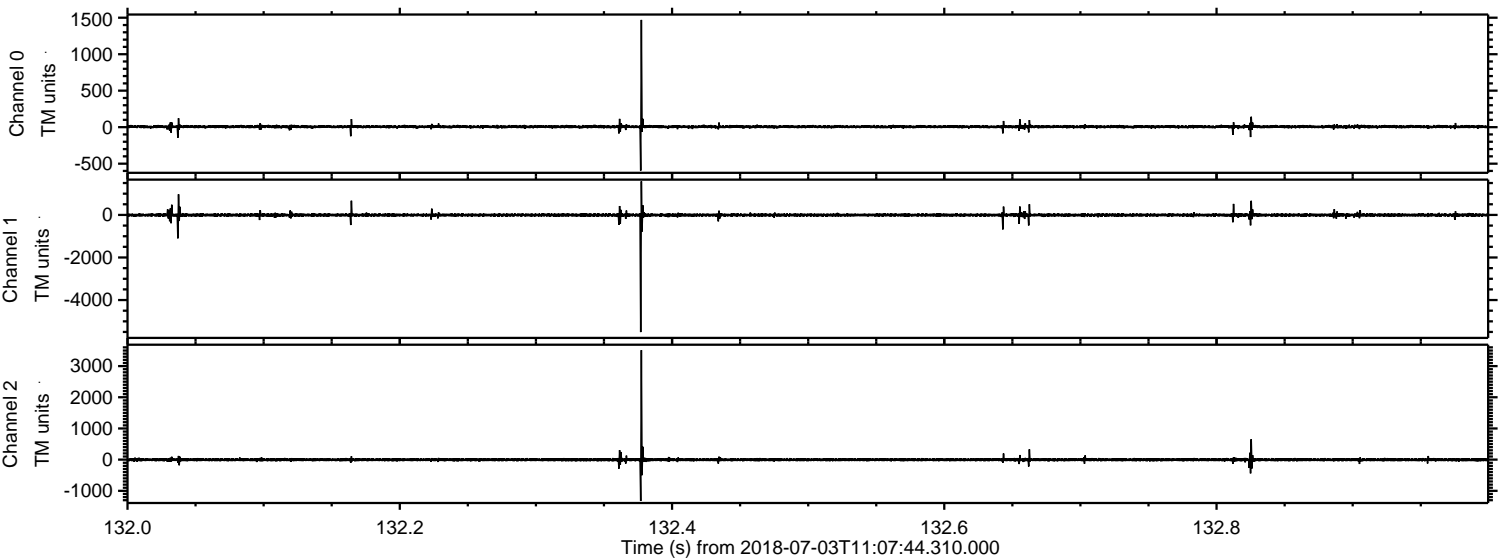
Channel 0
mn: -1113
mx: 1386
 μ : 6.4
 σ : 14.7

Channel 1
mn: -3965
mx: 2556
 μ : -5.0
 σ : 44.0

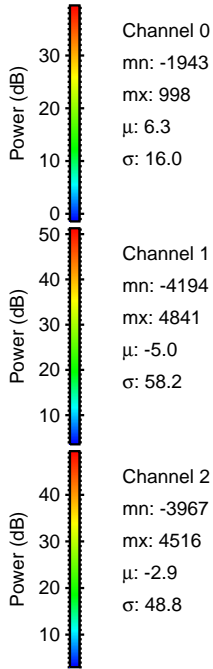
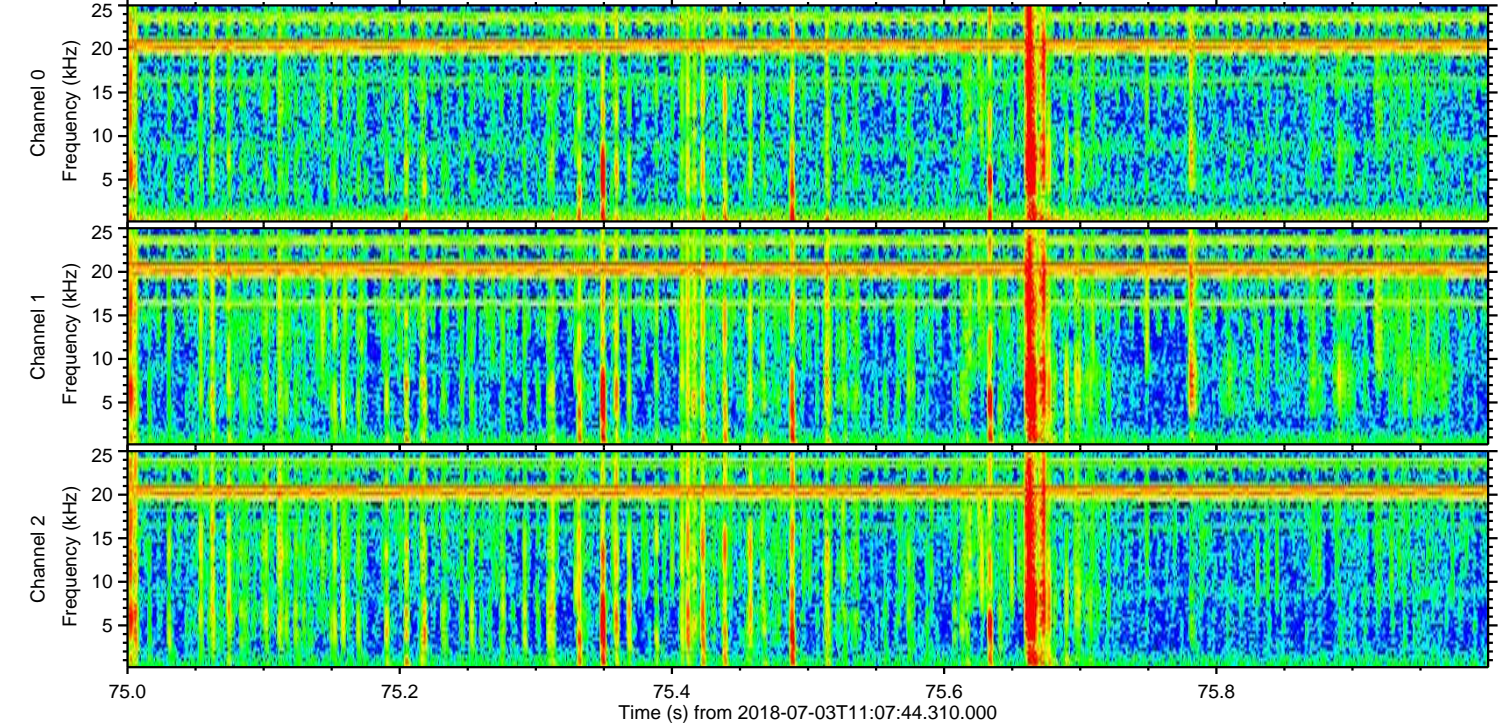
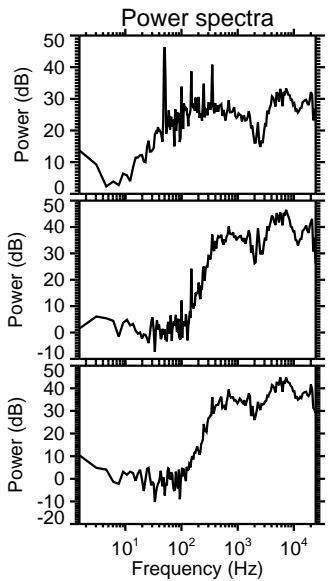
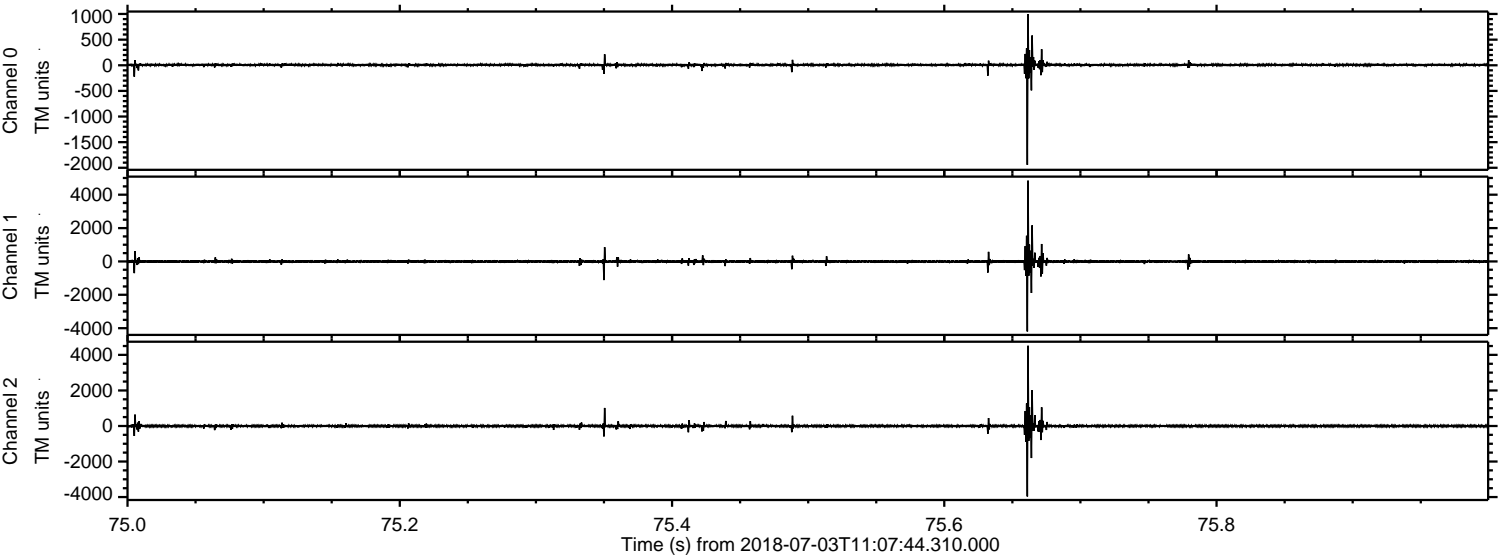
Channel 2
mn: -6377
mx: 4072
 μ : -3.0
 σ : 51.1

ELMAVAN 3D WAVEFORMS (Measured data sampled at 50 kHz) 51000 packets of 144 samples from 2018-07-03T11:07:44.310.000. Part 133/147

Processed Tue Jul 3 13:15:49 2018 by ELM ver.2012-10-06 from 001__elm20180703_110743__dat00.bin



Processed Tue Jul 3 13:15:49 2018 by ELM ver.2012-10-06 from 001__elm20180703_110743__dat00.bin

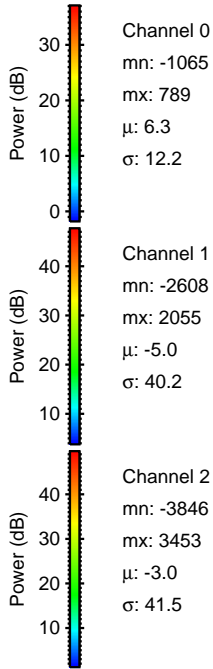
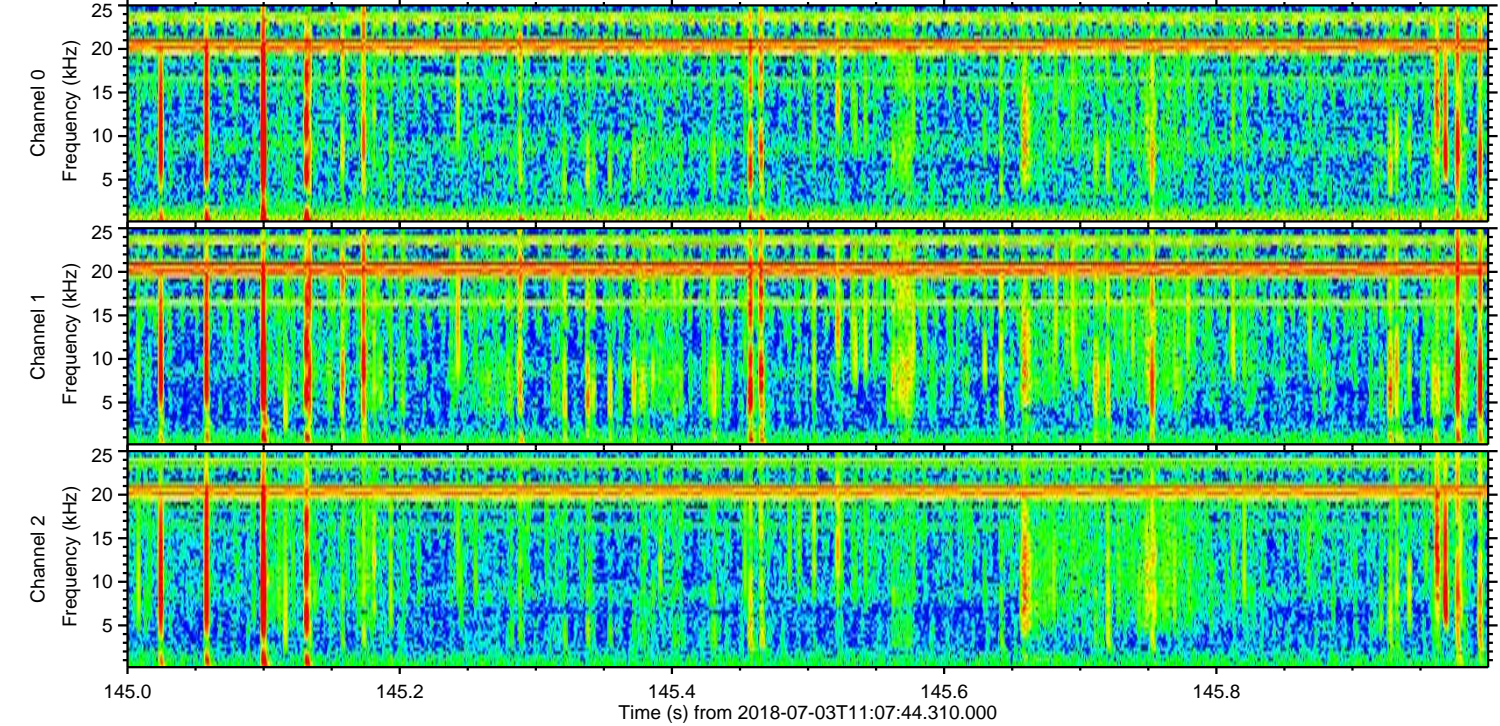
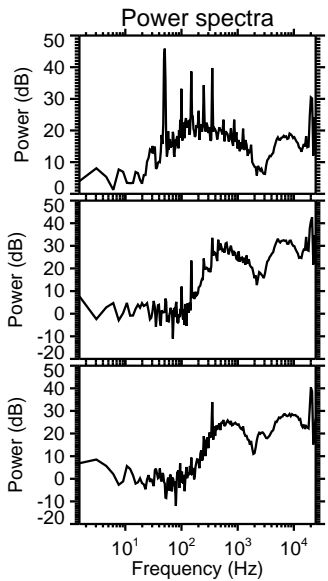
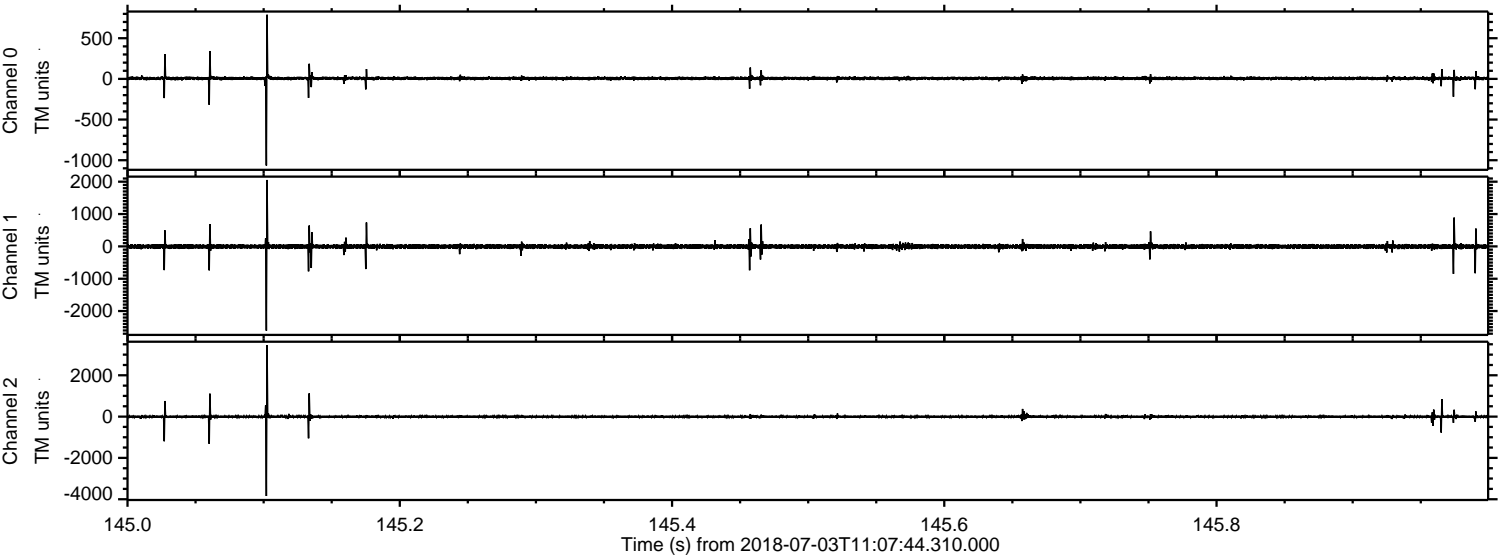


Channel 0
mn: -1943
mx: 998
 μ : 6.3
 σ : 16.0

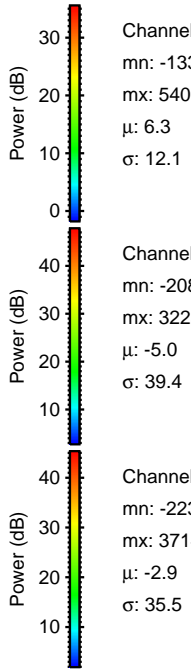
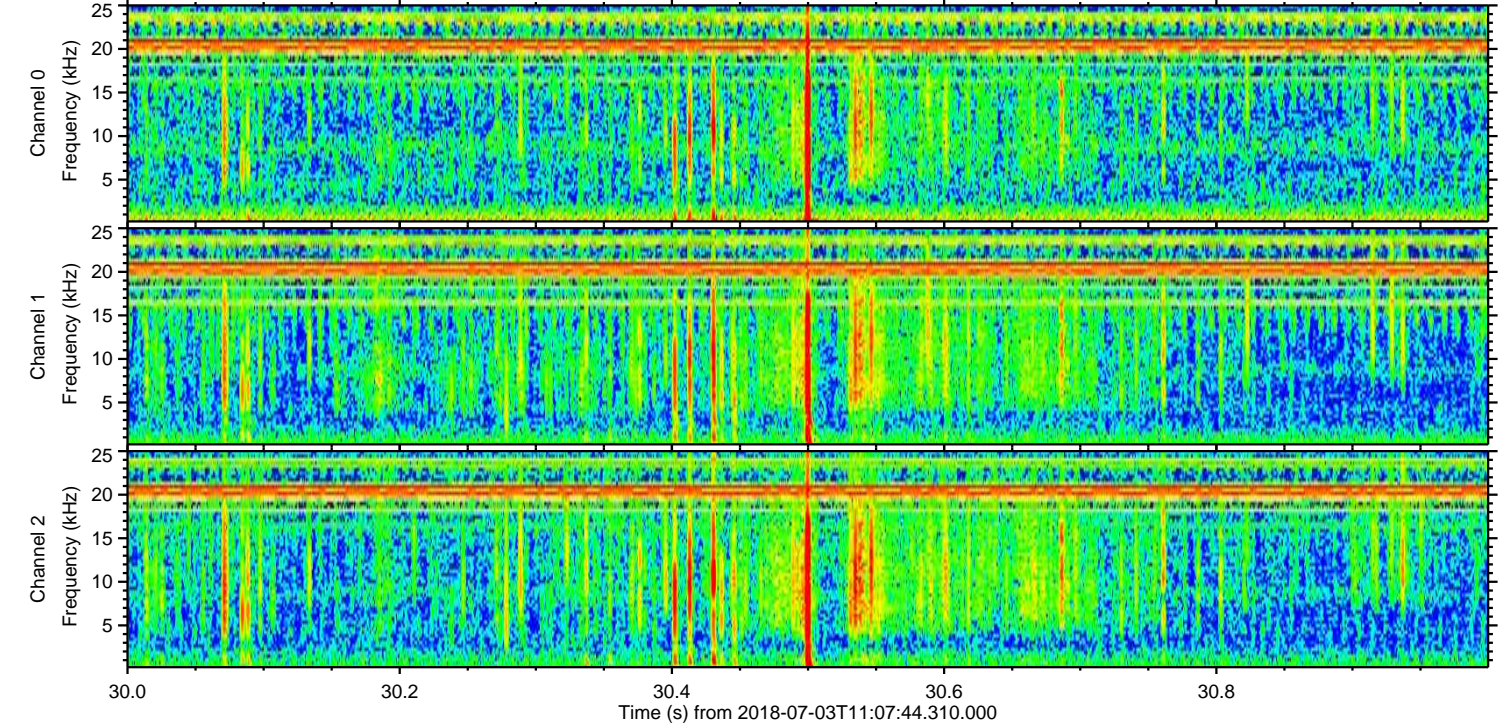
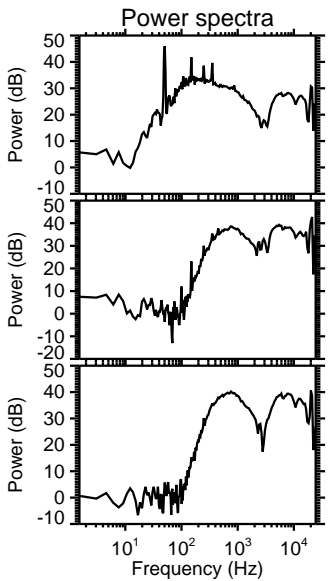
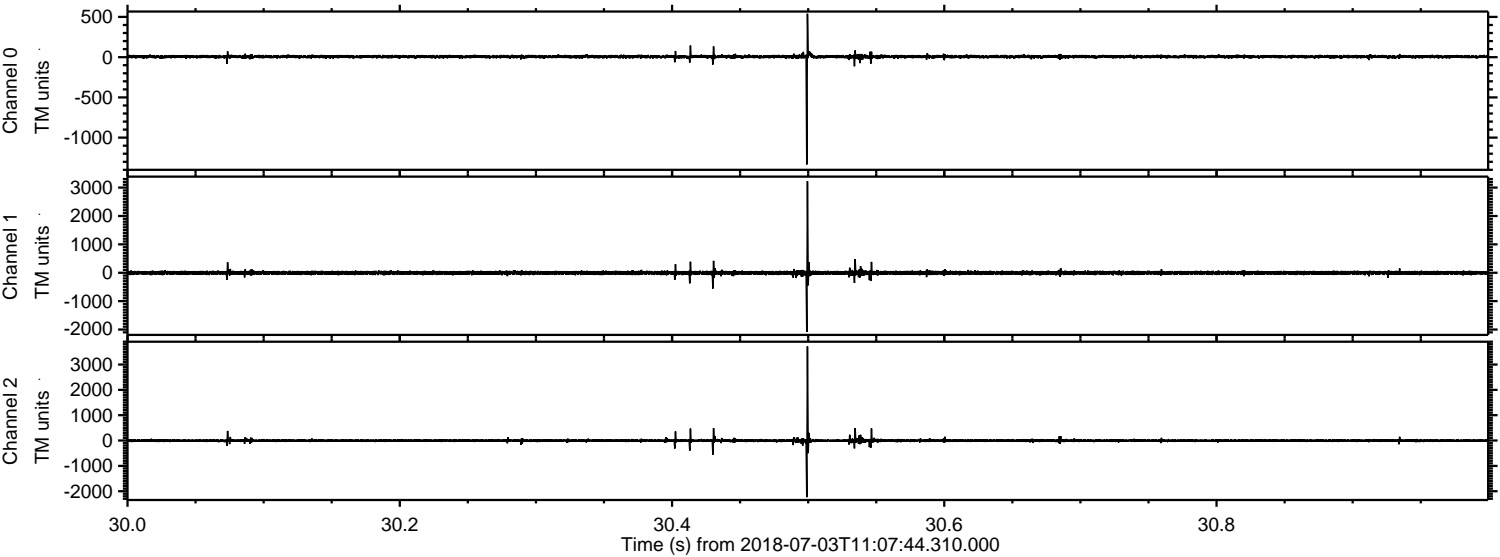
Channel 1
mn: -4194
mx: 4841
 μ : -5.0
 σ : 58.2

Channel 2
mn: -3967
mx: 4516
 μ : -2.9
 σ : 48.8

Processed Tue Jul 3 13:15:50 2018 by ELM ver.2012-10-06 from 001__elm20180703_110743__dat00.bin



Processed Tue Jul 3 13:15:51 2018 by ELM ver.2012-10-06 from 001__elm20180703_110743__dat00.bin



Channel 0
mn: -1333
mx: 540
 μ : 6.3
 σ : 12.1

Channel 1
mn: -2086
mx: 3225
 μ : -5.0
 σ : 39.4

Channel 2
mn: -2235
mx: 3714
 μ : -2.9
 σ : 35.5

Processed Tue Jul 3 13:15:52 2018 by ELM ver.2012-10-06 from 001__elm20180703_110743__dat00.bin

