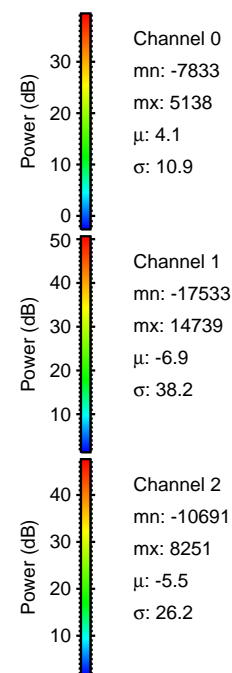
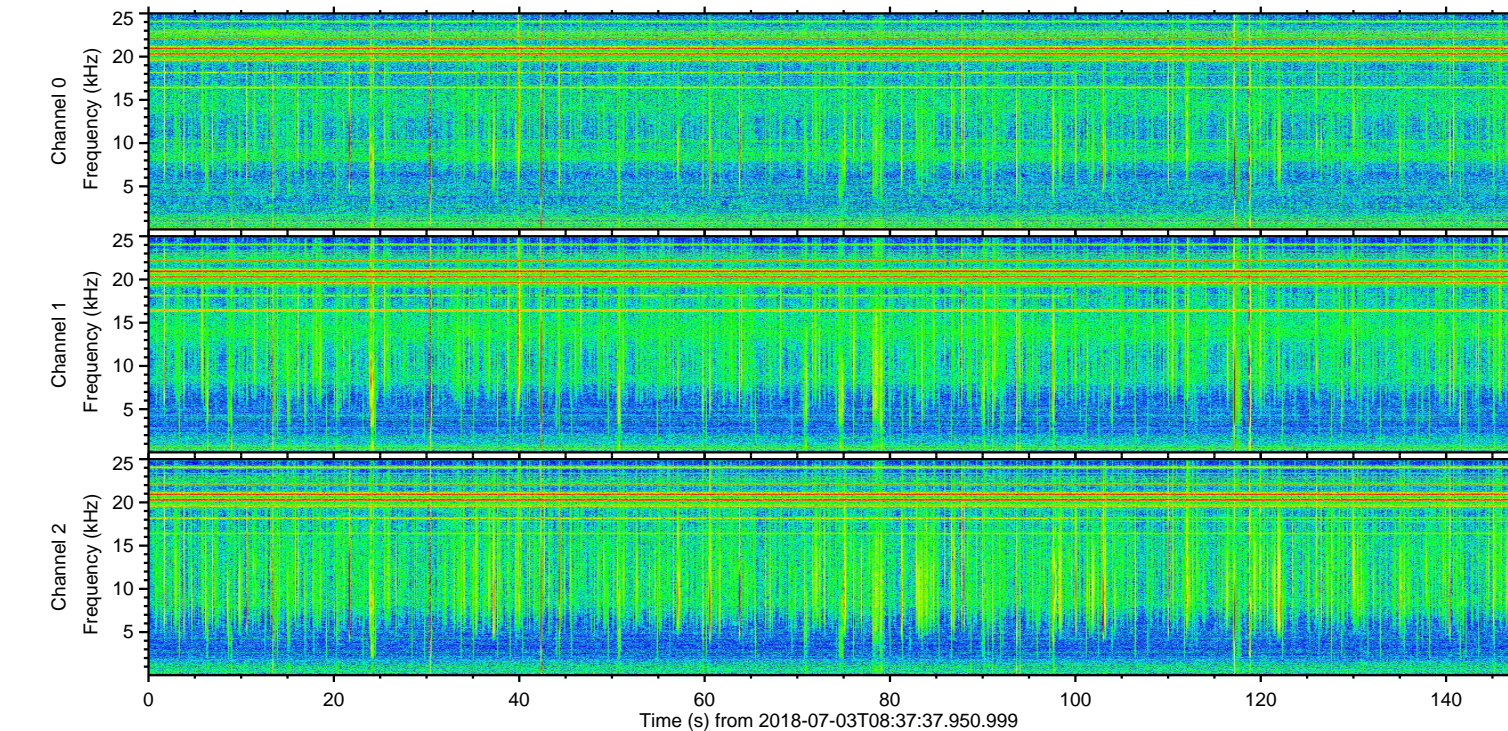
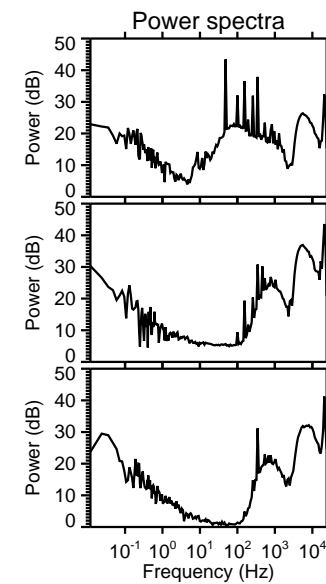
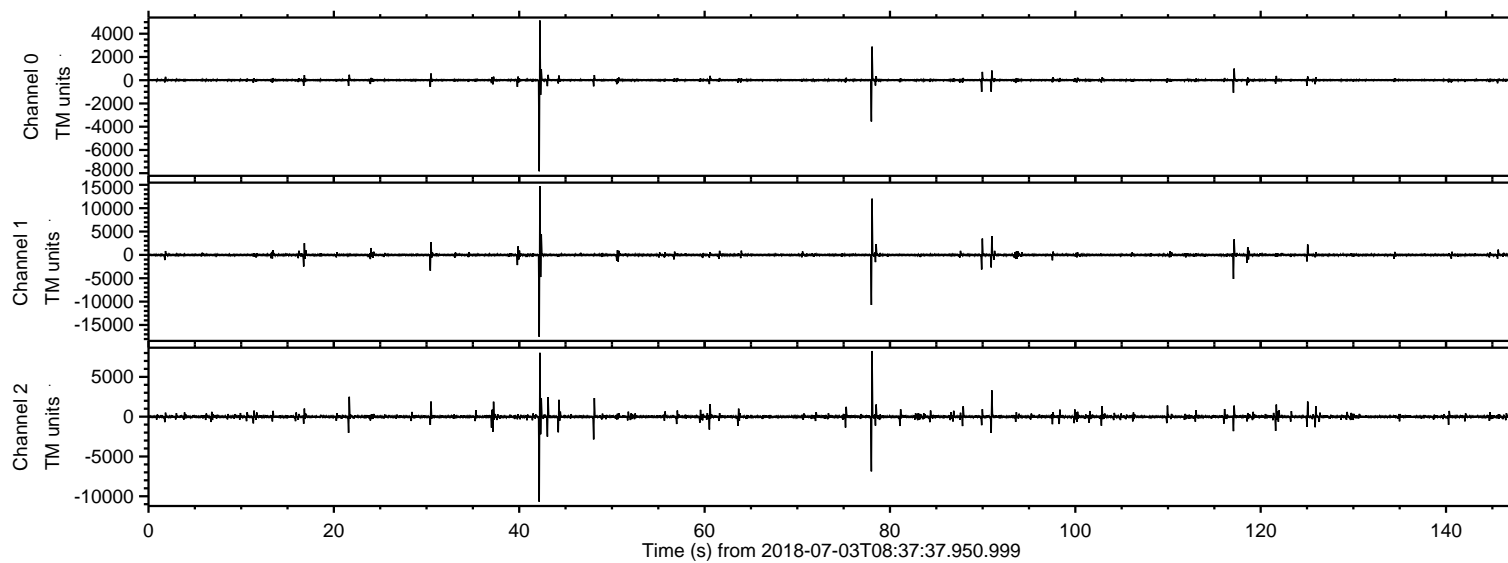


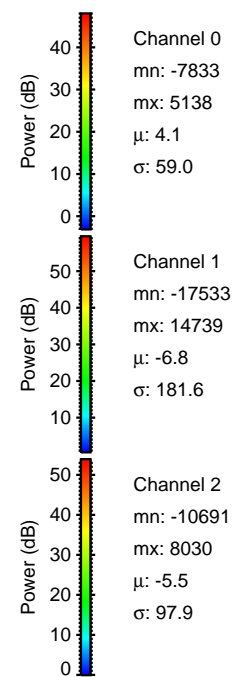
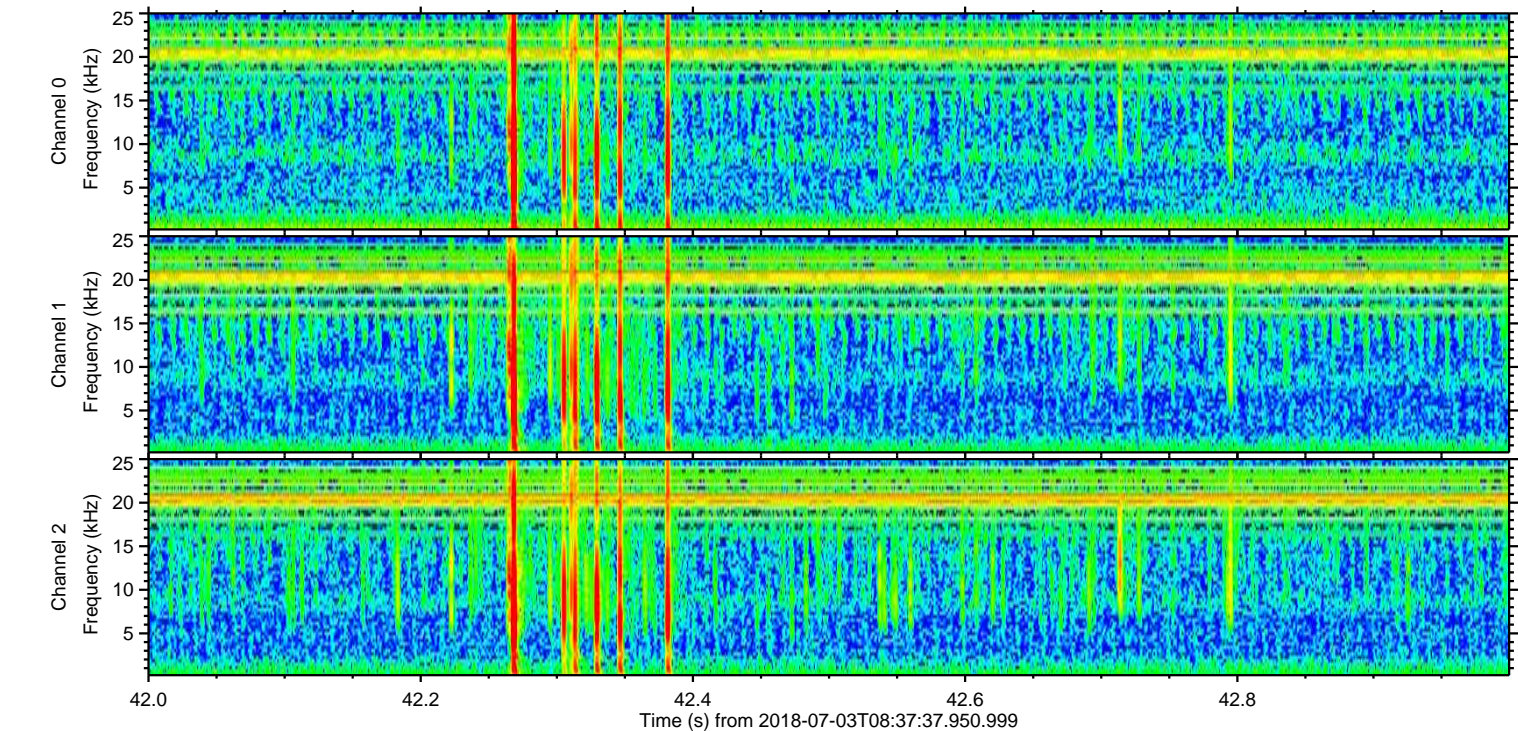
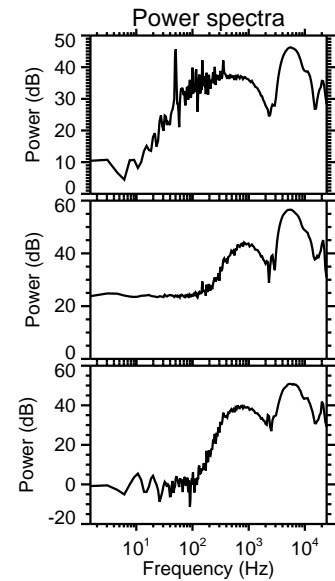
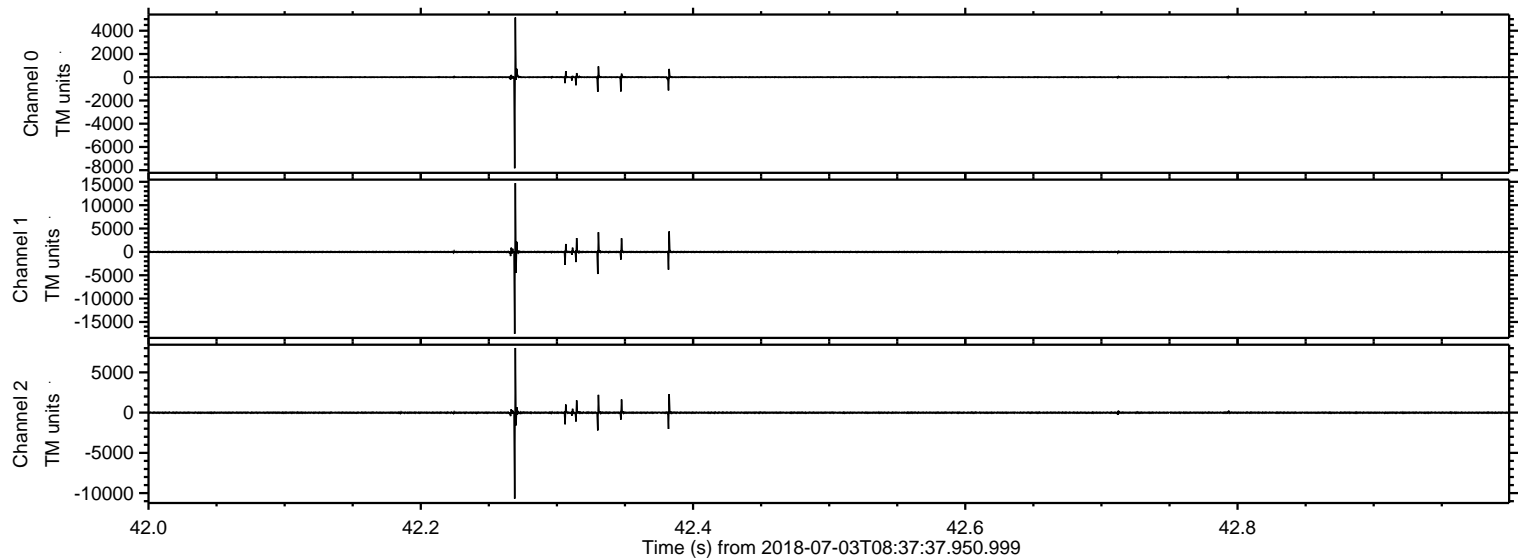
# ELMAVAN 3D WAVEFORMS (Measured data sampled at 50 kHz) 51000 packets of 144 samples from 2018-07-03T08:37:37.950.999.

Processed Tue Jul 3 10:45:05 2018 by ELM ver.2012-10-06 from 001\_\_elm20180703\_083736\_\_dat00.bin



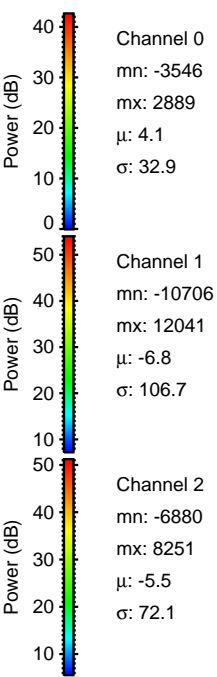
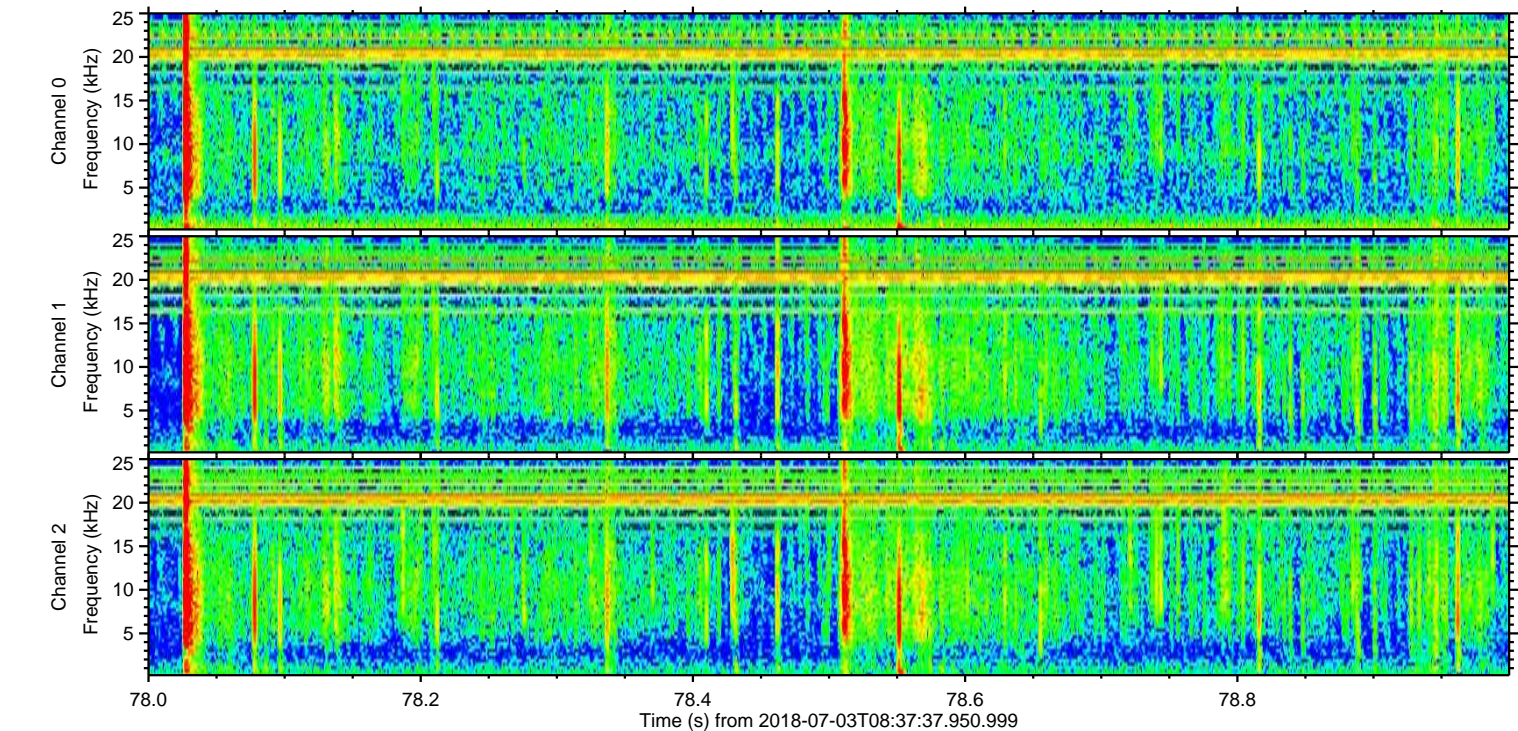
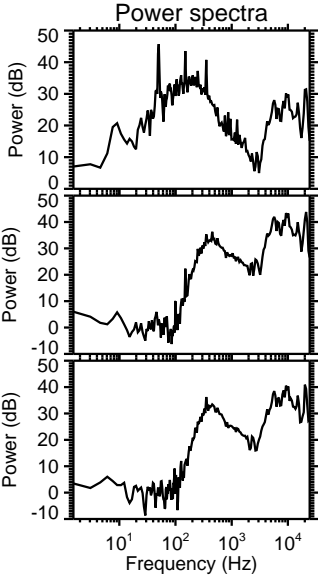
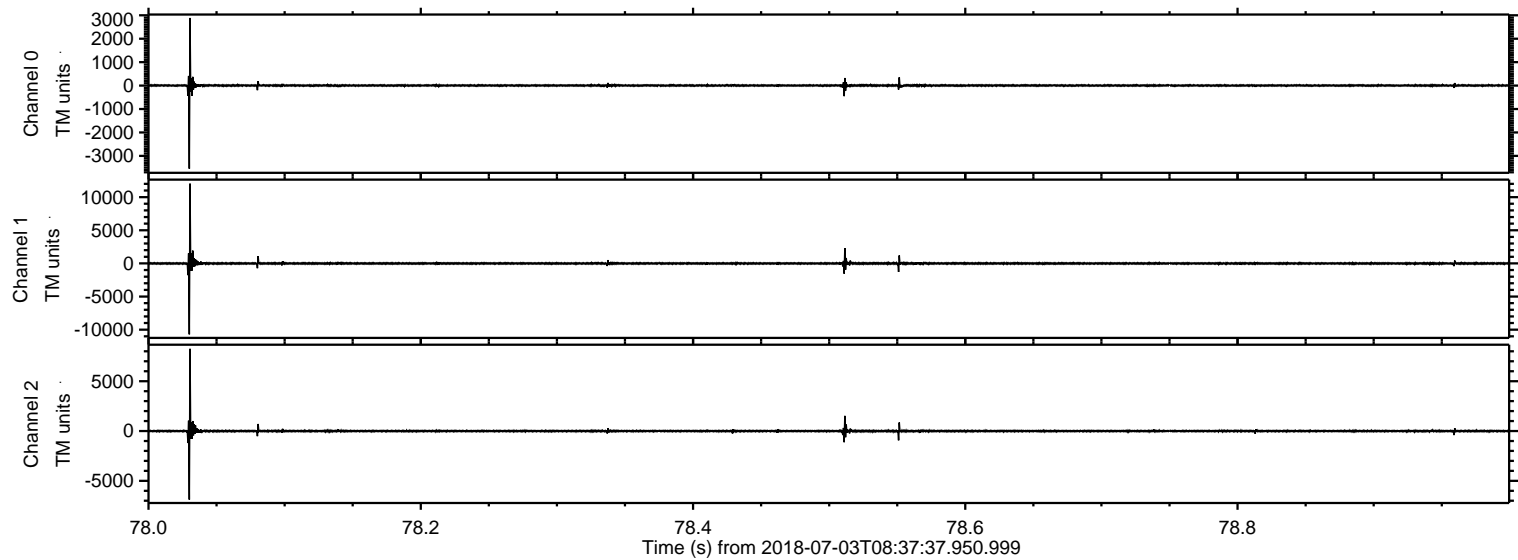


Processed Tue Jul 3 10:45:10 2018 by ELM ver.2012-10-06 from 001\_\_elm20180703\_083736\_\_dat00.bin





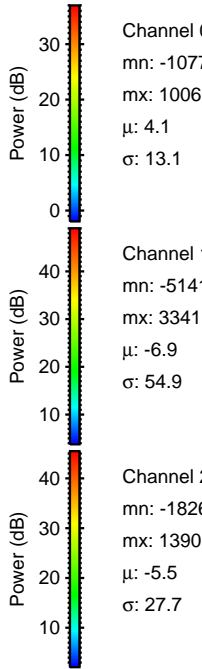
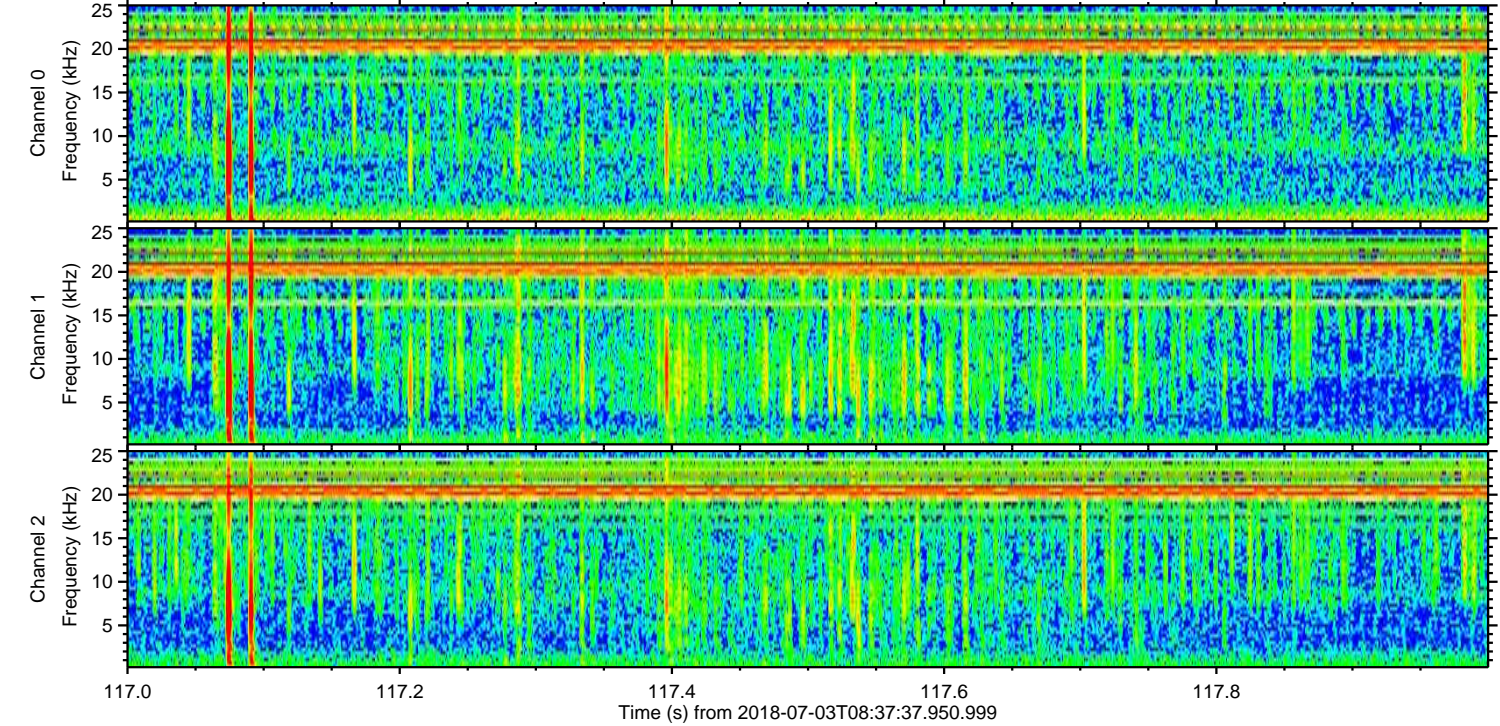
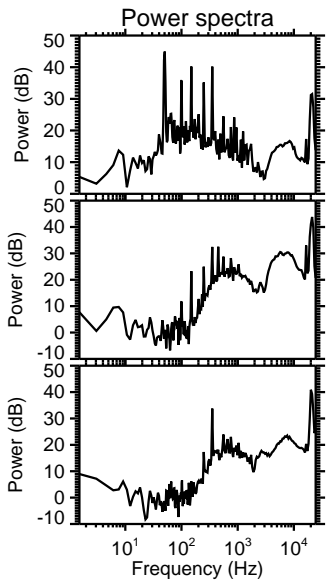
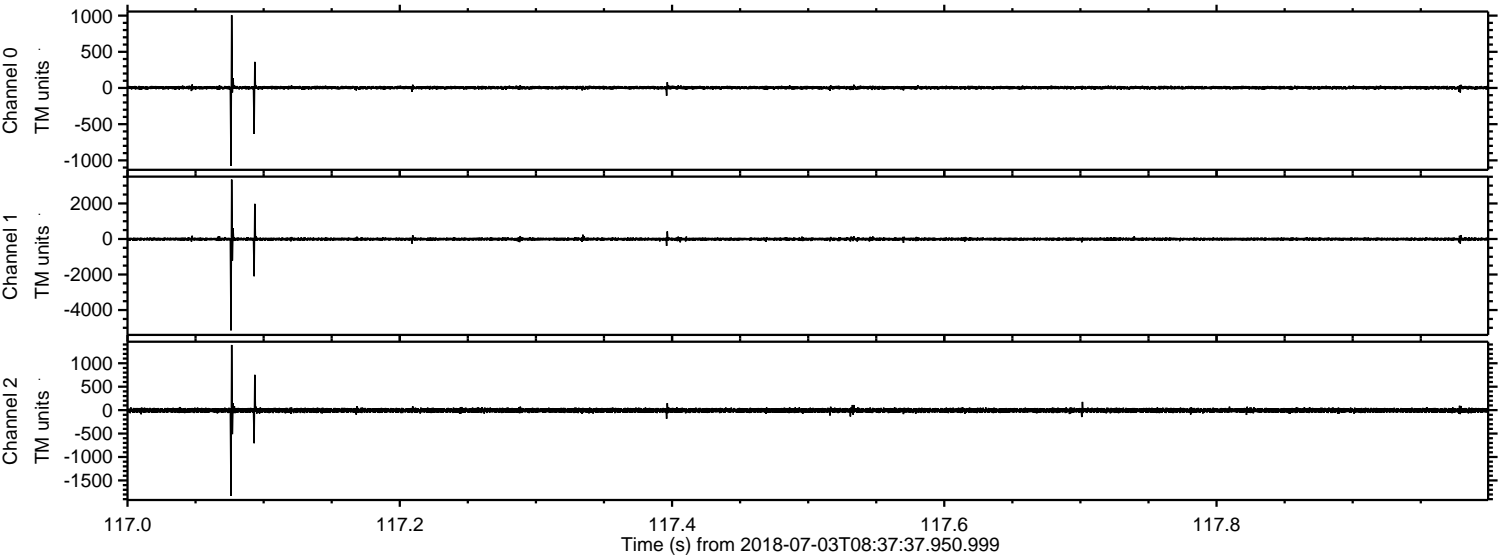
Processed Tue Jul 3 10:45:11 2018 by ELM ver.2012-10-06 from 001\_\_elm20180703\_083736\_\_dat00.bin





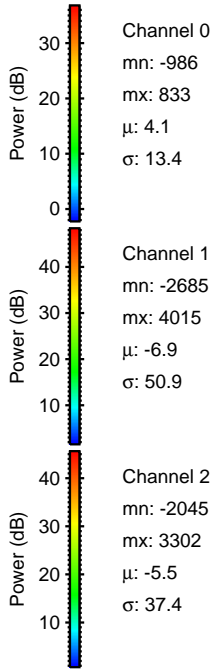
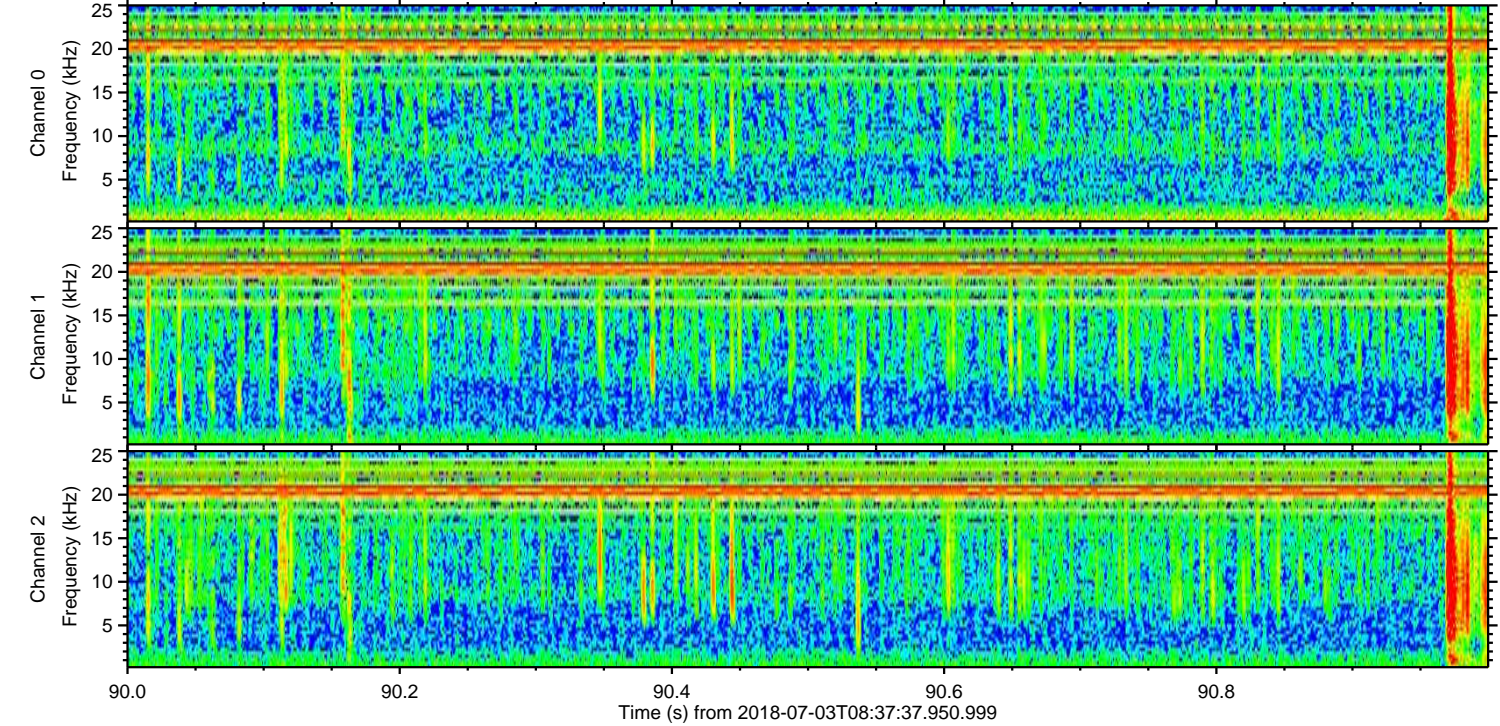
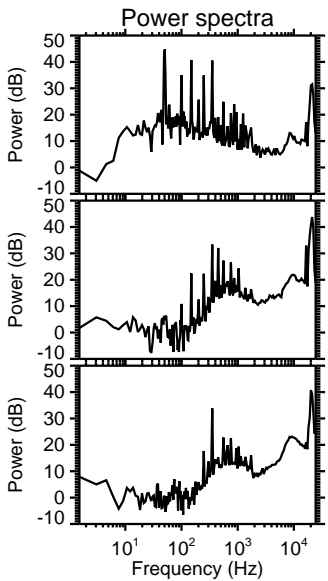
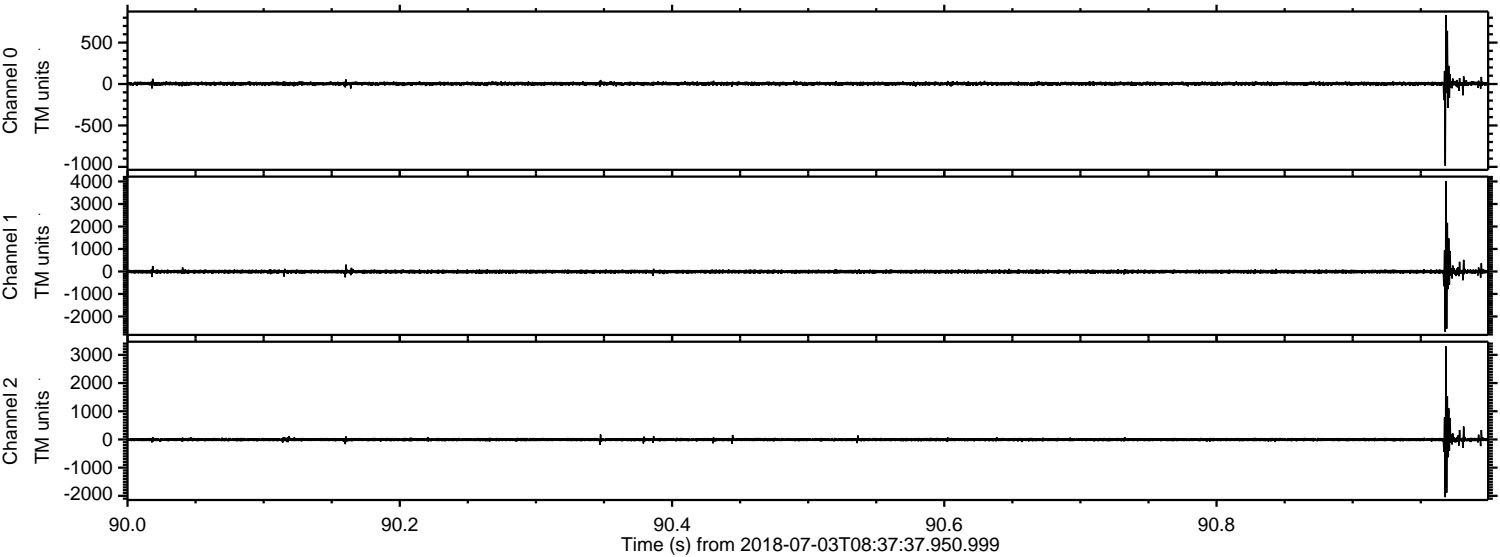
ELMAVAN 3D WAVEFORMS (Measured data sampled at 50 kHz) 51000 packets of 144 samples from 2018-07-03T08:37:37.950.999. Part 118/147

Processed Tue Jul 3 10:45:12 2018 by ELM ver.2012-10-06 from 001\_\_elm20180703\_083736\_\_dat00.bin



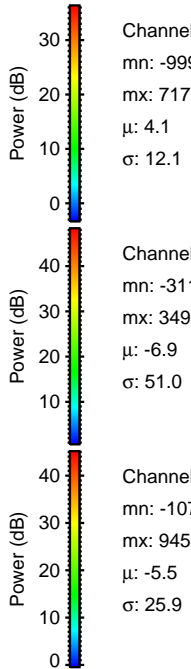
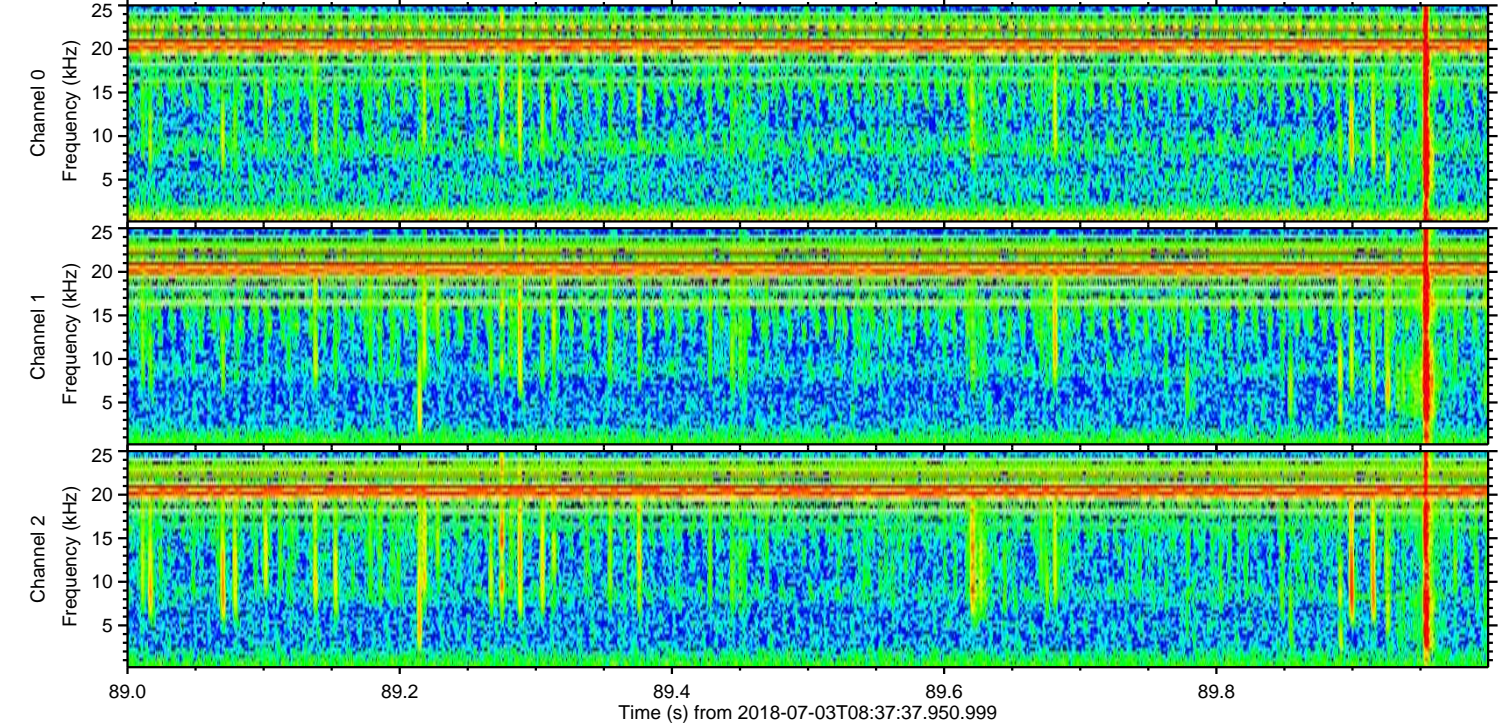
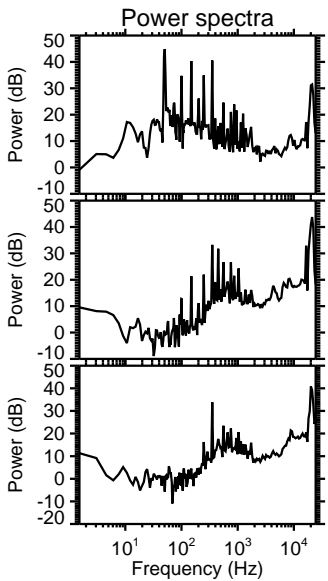
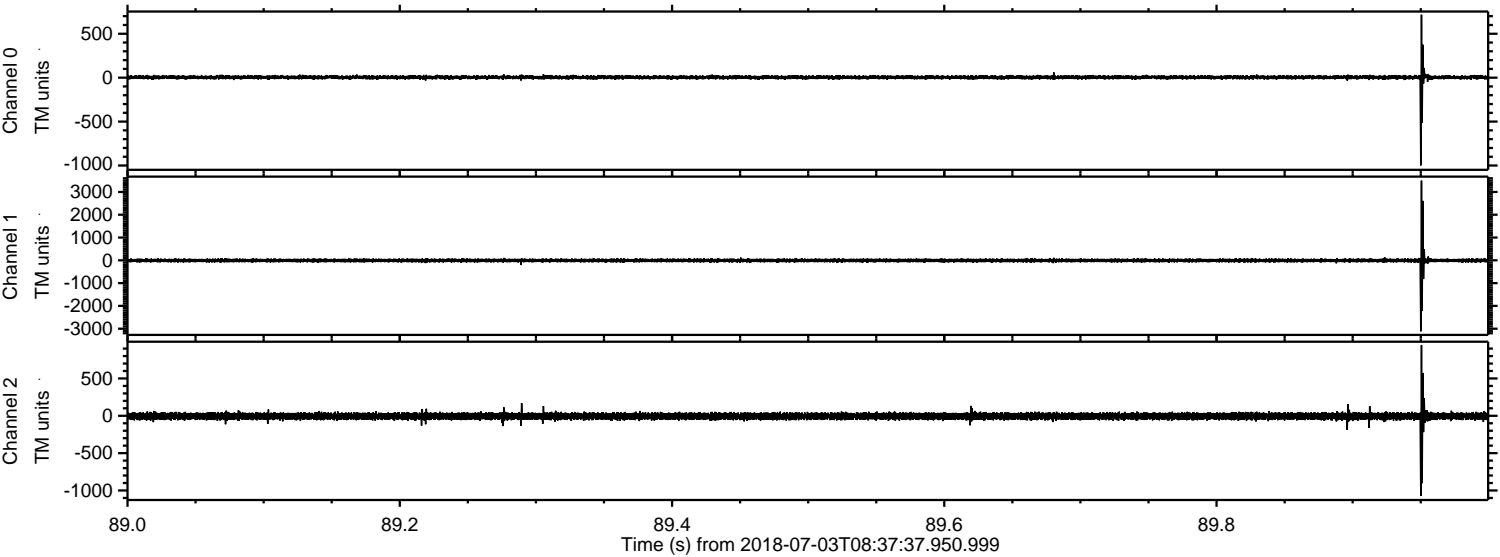


Processed Tue Jul 3 10:45:12 2018 by ELM ver.2012-10-06 from 001\_\_elm20180703\_083736\_\_dat00.bin



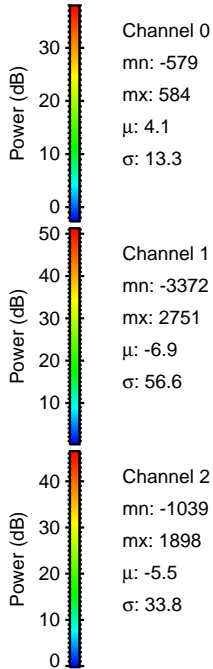
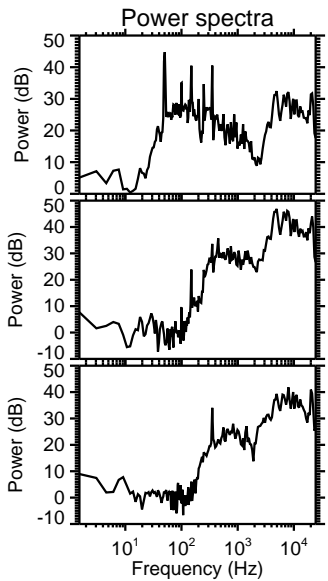
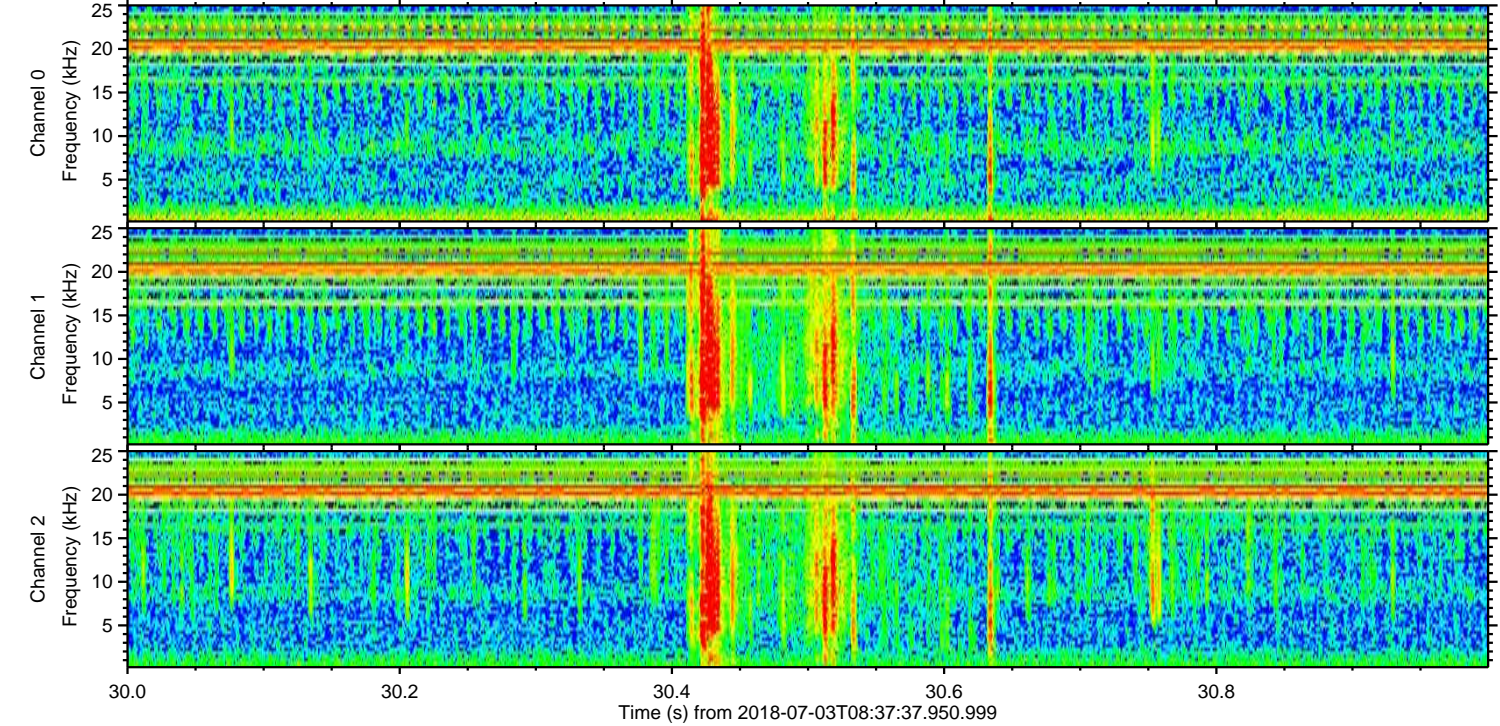
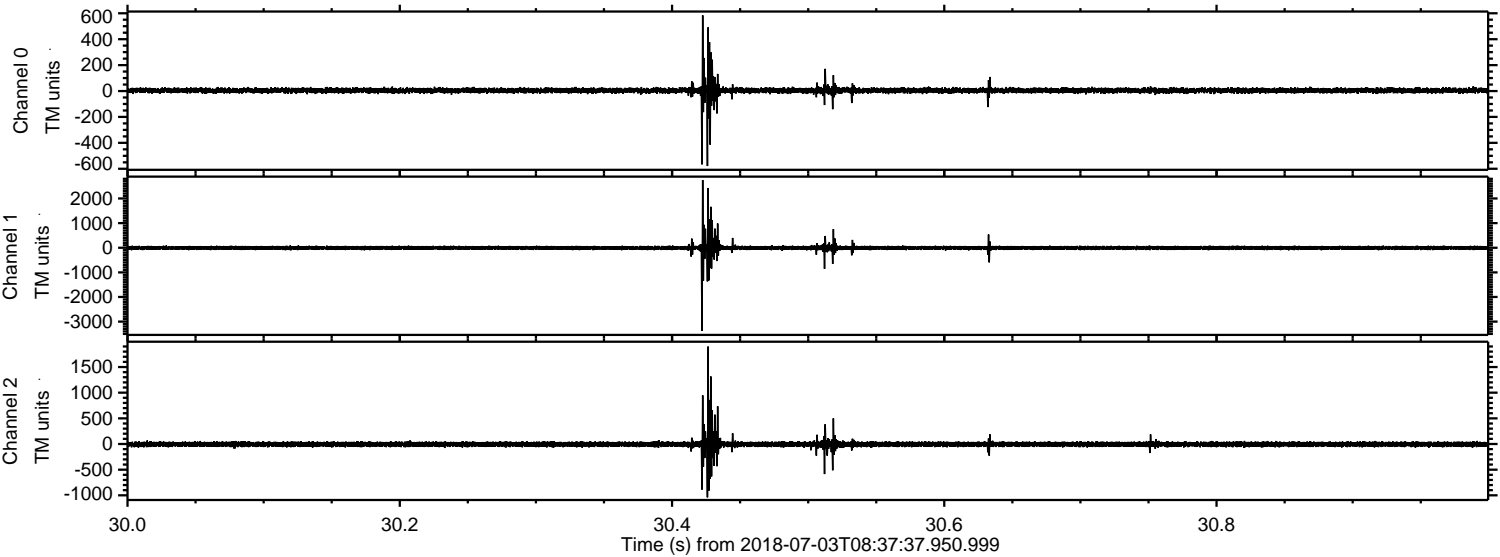


Processed Tue Jul 3 10:45:13 2018 by ELM ver.2012-10-06 from 001\_\_elm20180703\_083736\_\_dat00.bin



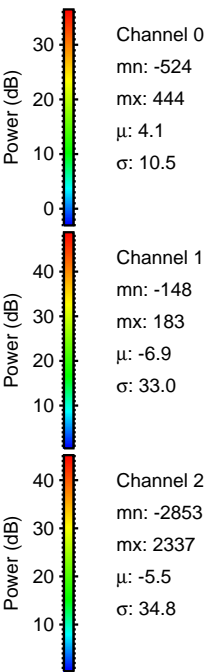
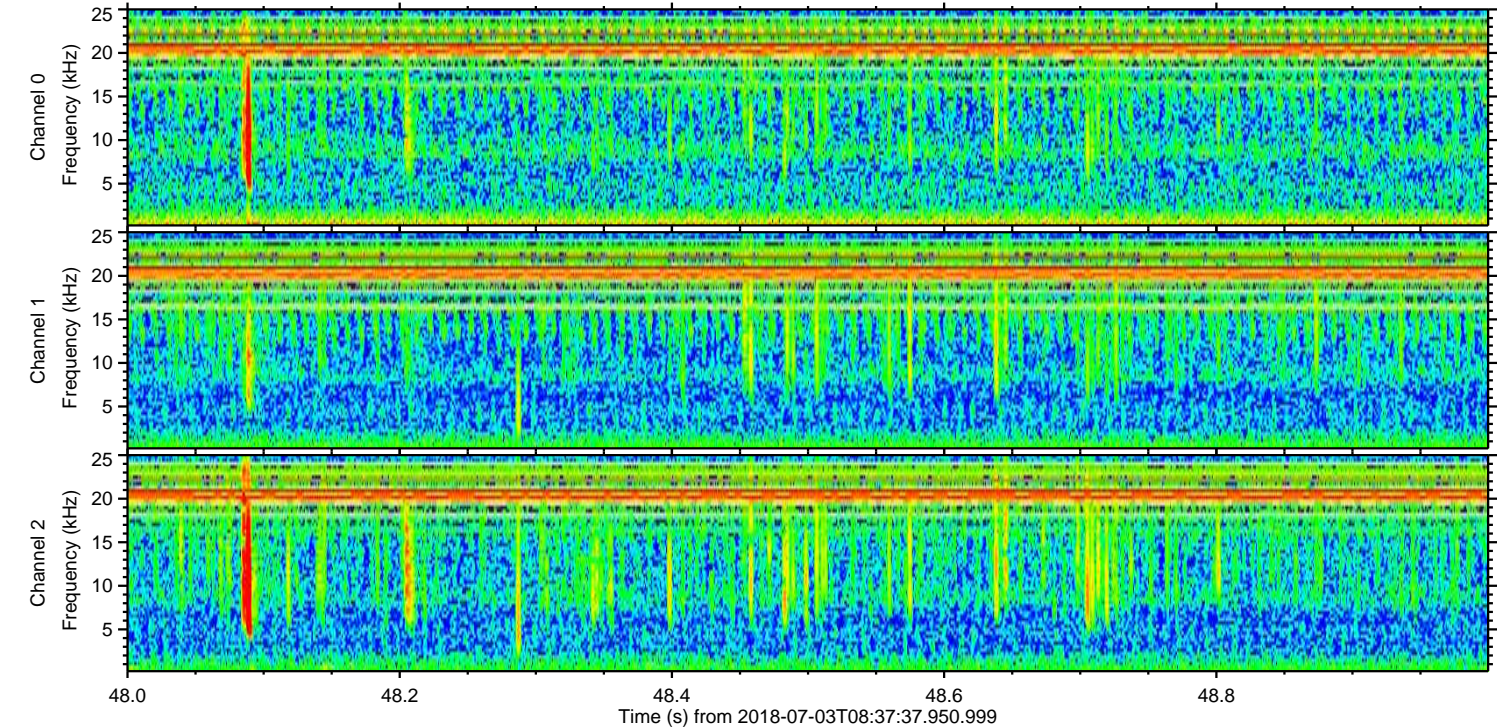
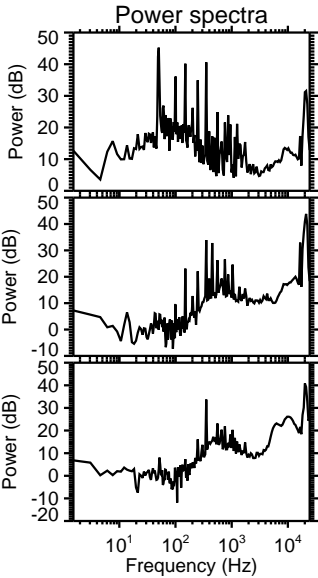
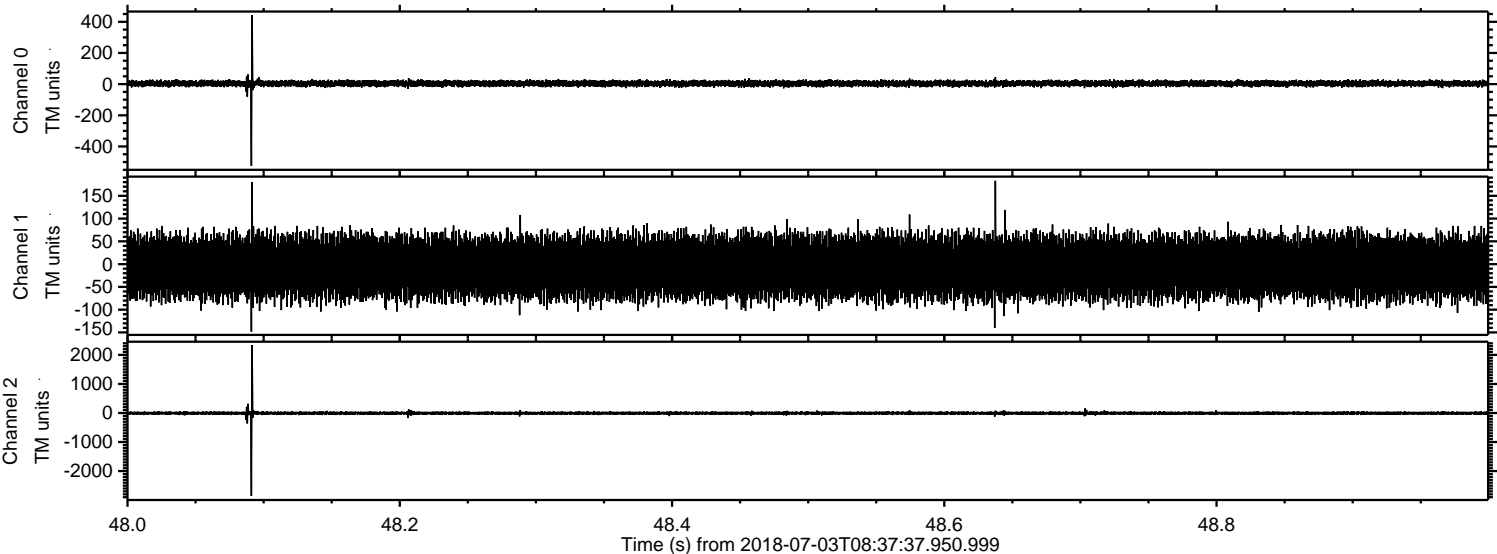


Processed Tue Jul 3 10:45:14 2018 by ELM ver.2012-10-06 from 001\_\_elm20180703\_083736\_\_dat00.bin





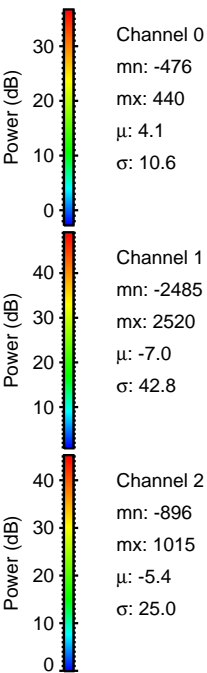
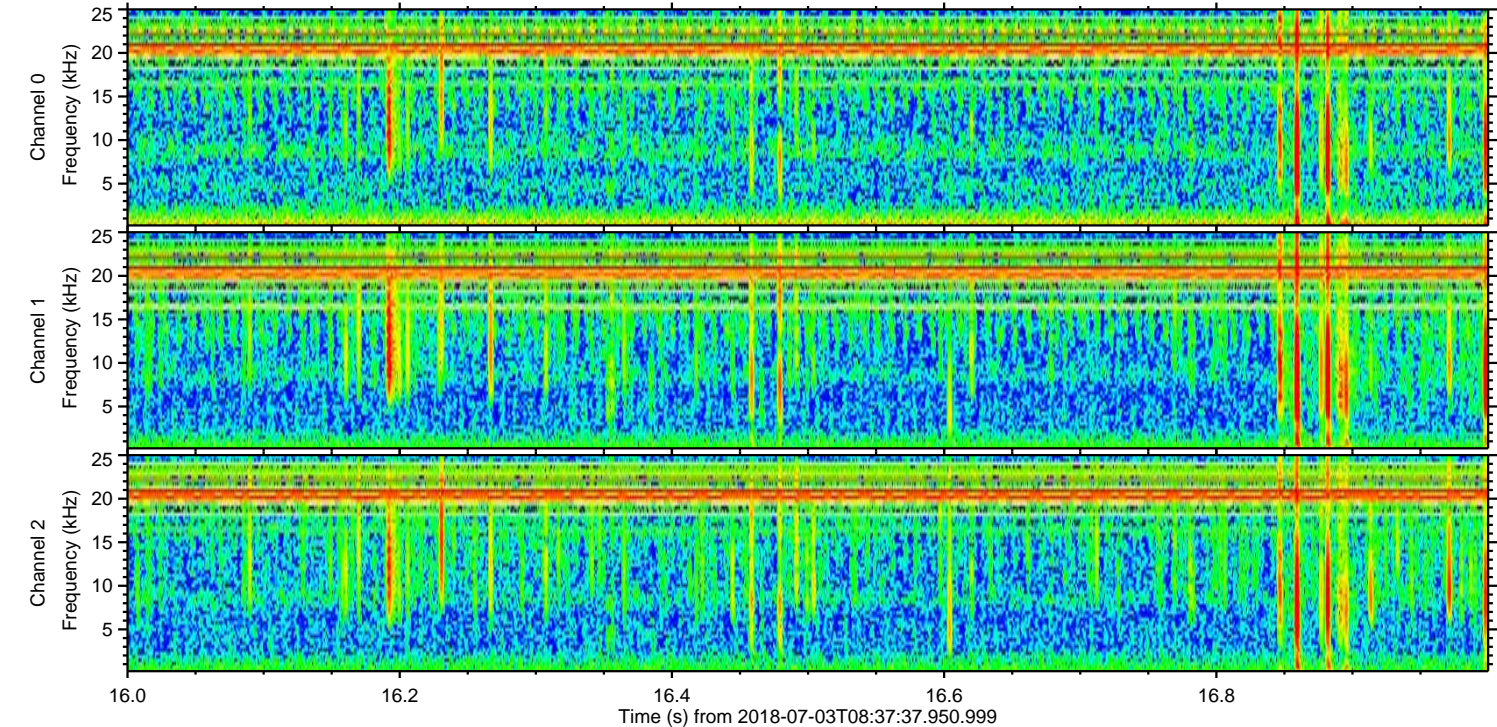
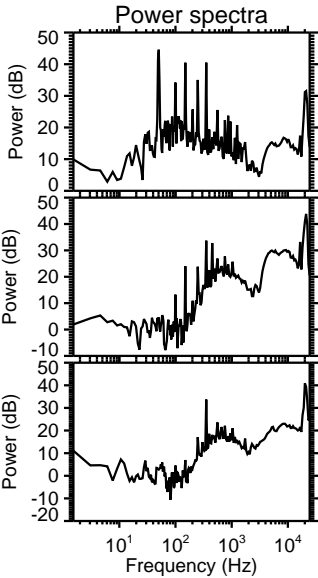
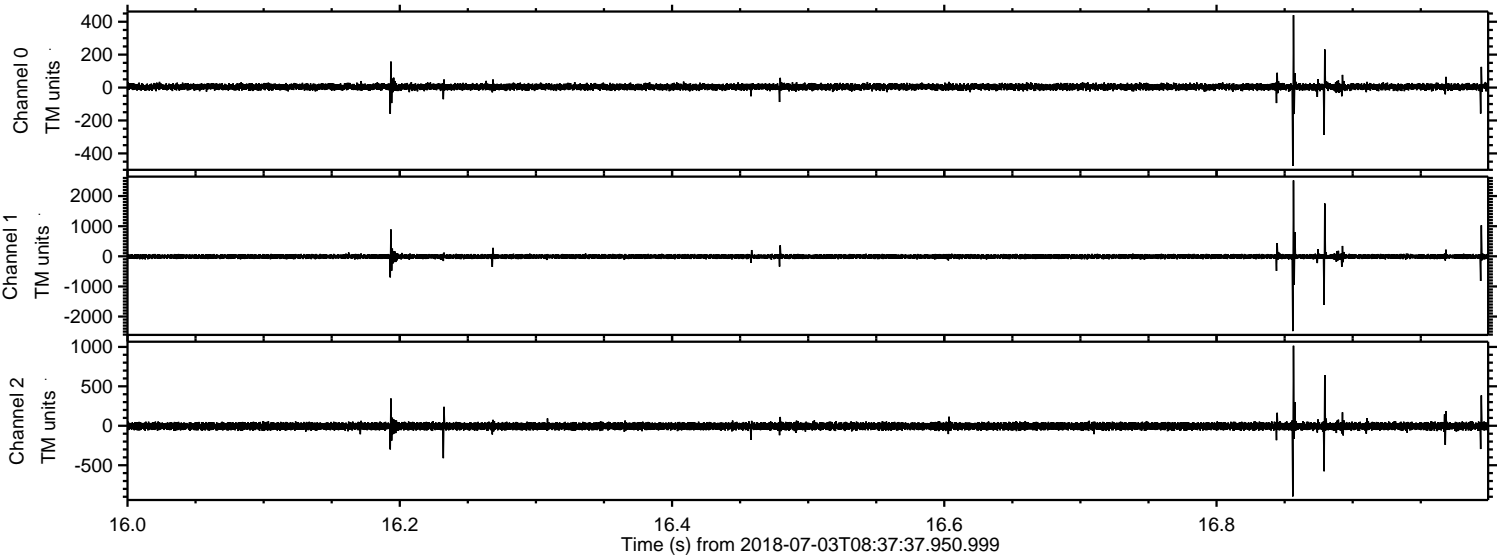
Processed Tue Jul 3 10:45:14 2018 by ELM ver.2012-10-06 from 001\_\_elm20180703\_083736\_\_dat00.bin





ELMAVAN 3D WAVEFORMS (Measured data sampled at 50 kHz) 51000 packets of 144 samples from 2018-07-03T08:37:37.950.999. Part 17/147

Processed Tue Jul 3 10:45:15 2018 by ELM ver.2012-10-06 from 001\_\_elm20180703\_083736\_\_dat00.bin





Processed Tue Jul 3 10:45:16 2018 by ELM ver.2012-10-06 from 001\_\_elm20180703\_083736\_\_dat00.bin

