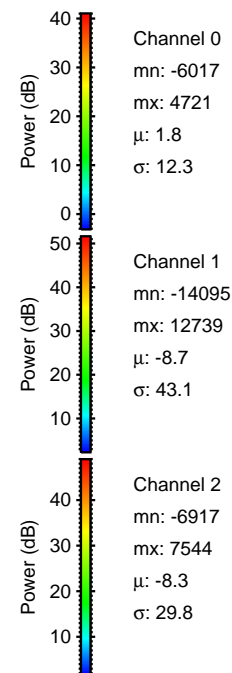
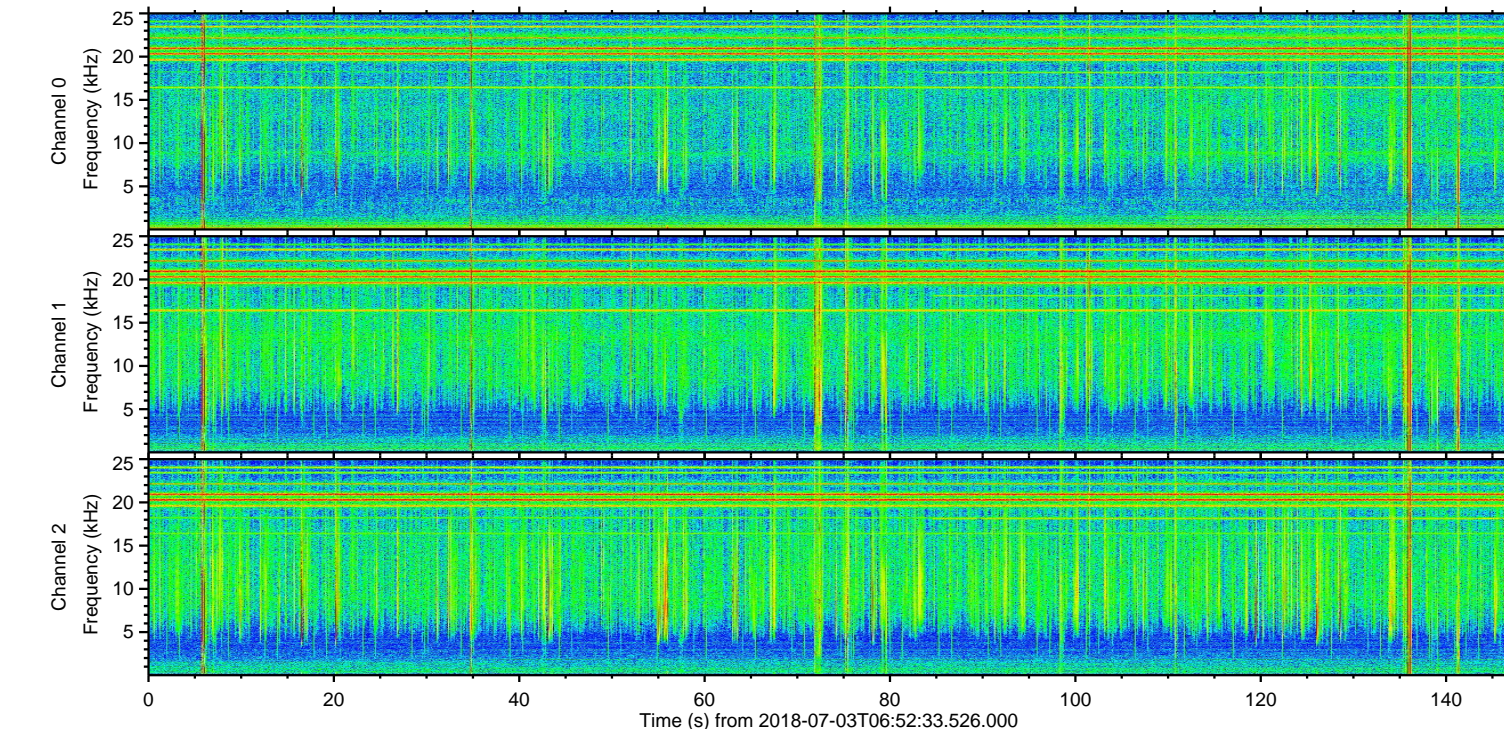
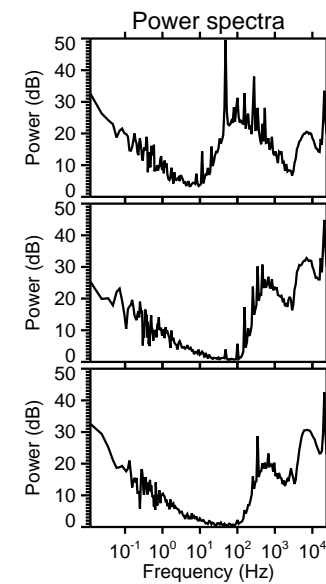
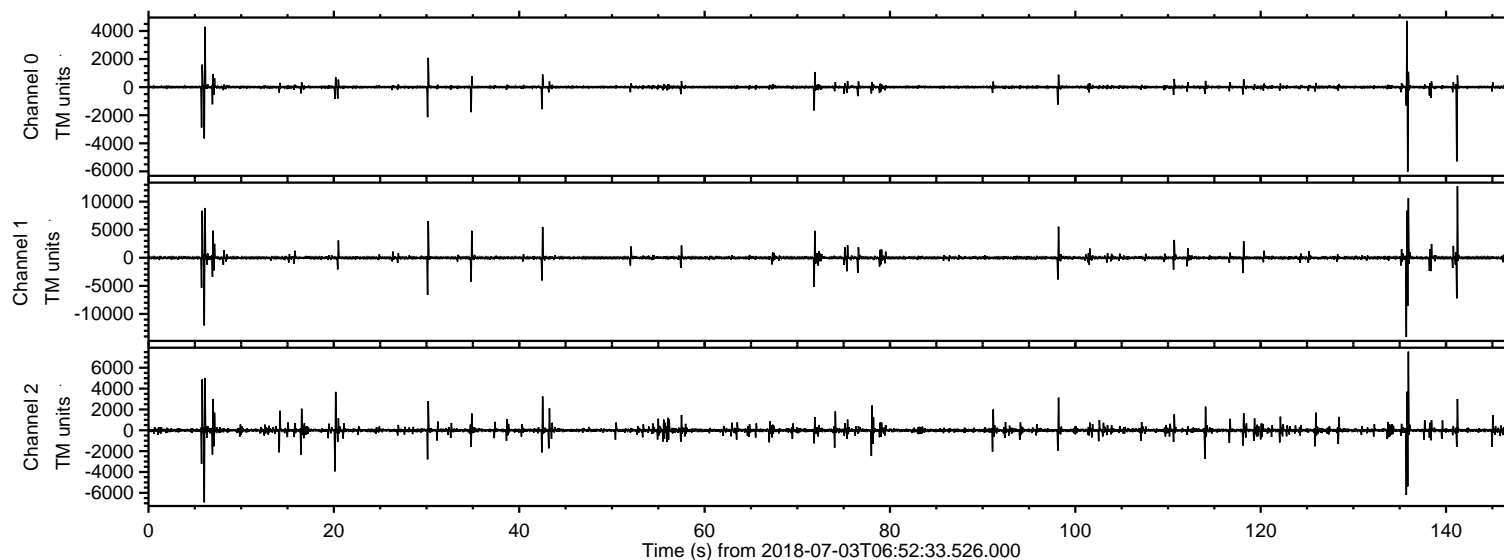


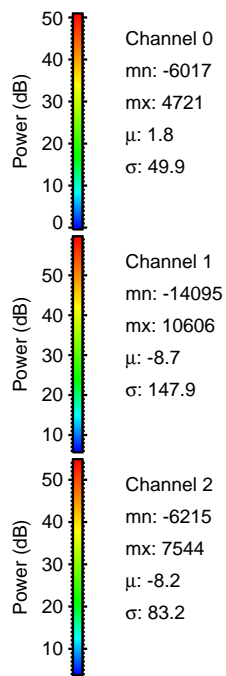
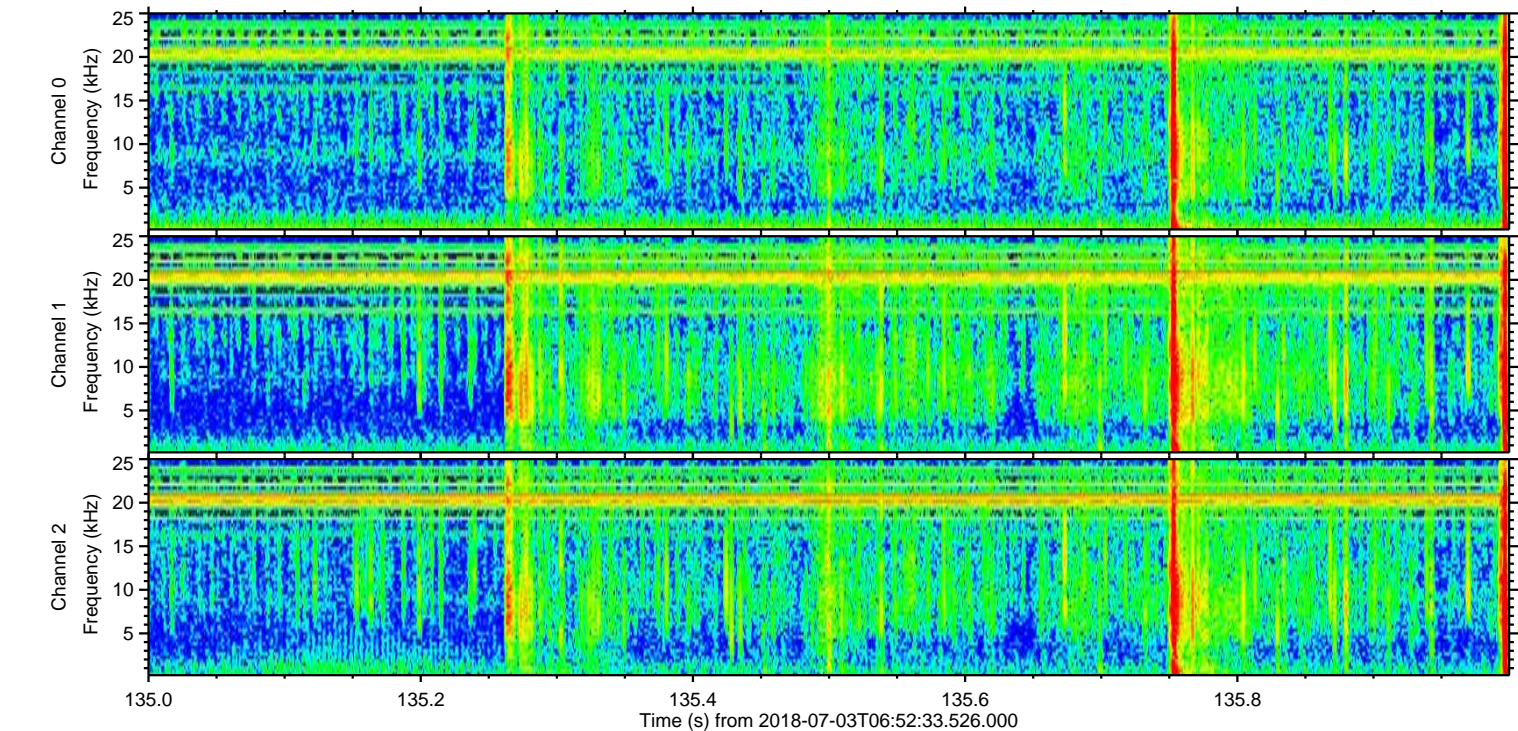
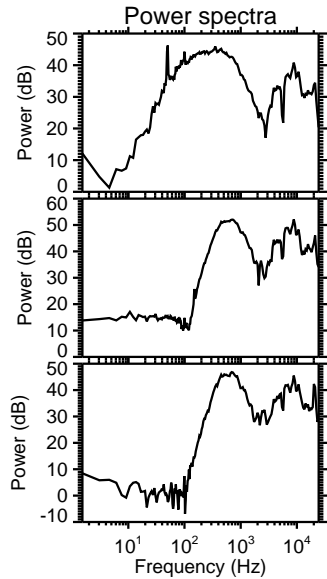
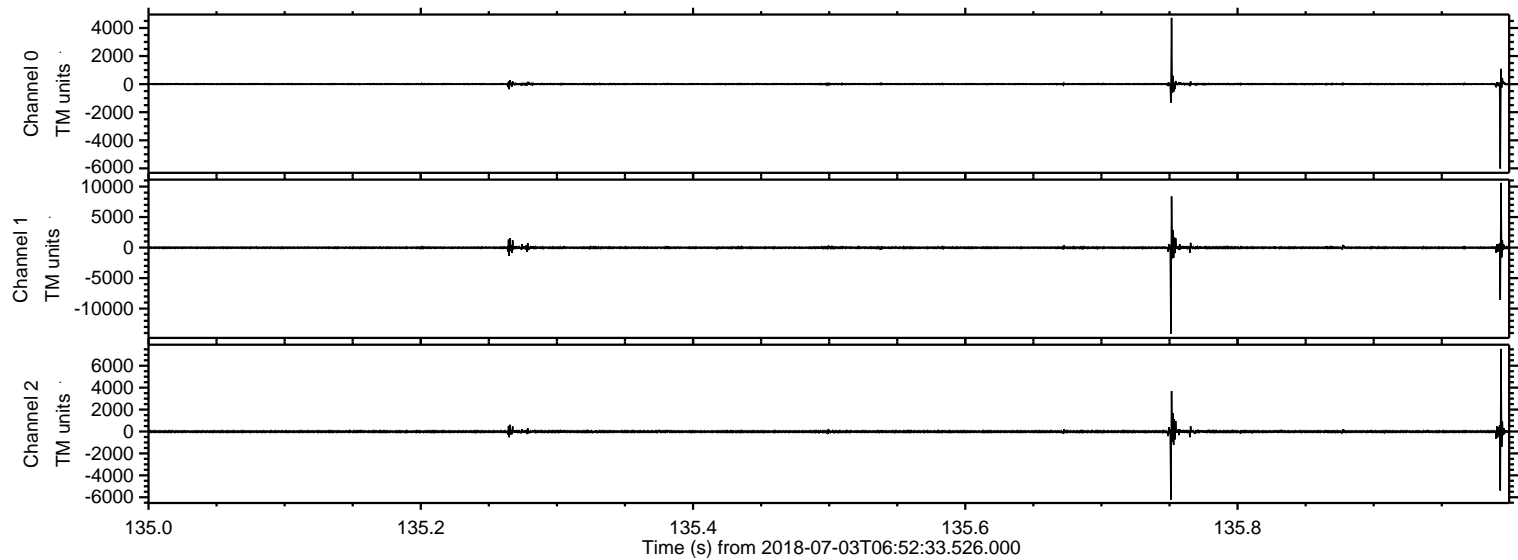
ELMAVAN 3D WAVEFORMS (Measured data sampled at 50 kHz) 51000 packets of 144 samples from 2018-07-03T06:52:33.526.000.

Processed Tue Jul 3 09:00:33 2018 by ELM ver.2012-10-06 from 001__elm20180703_065232__dat00.bin



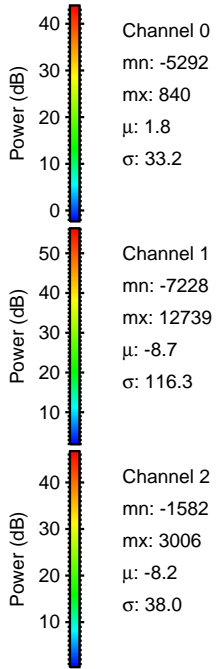
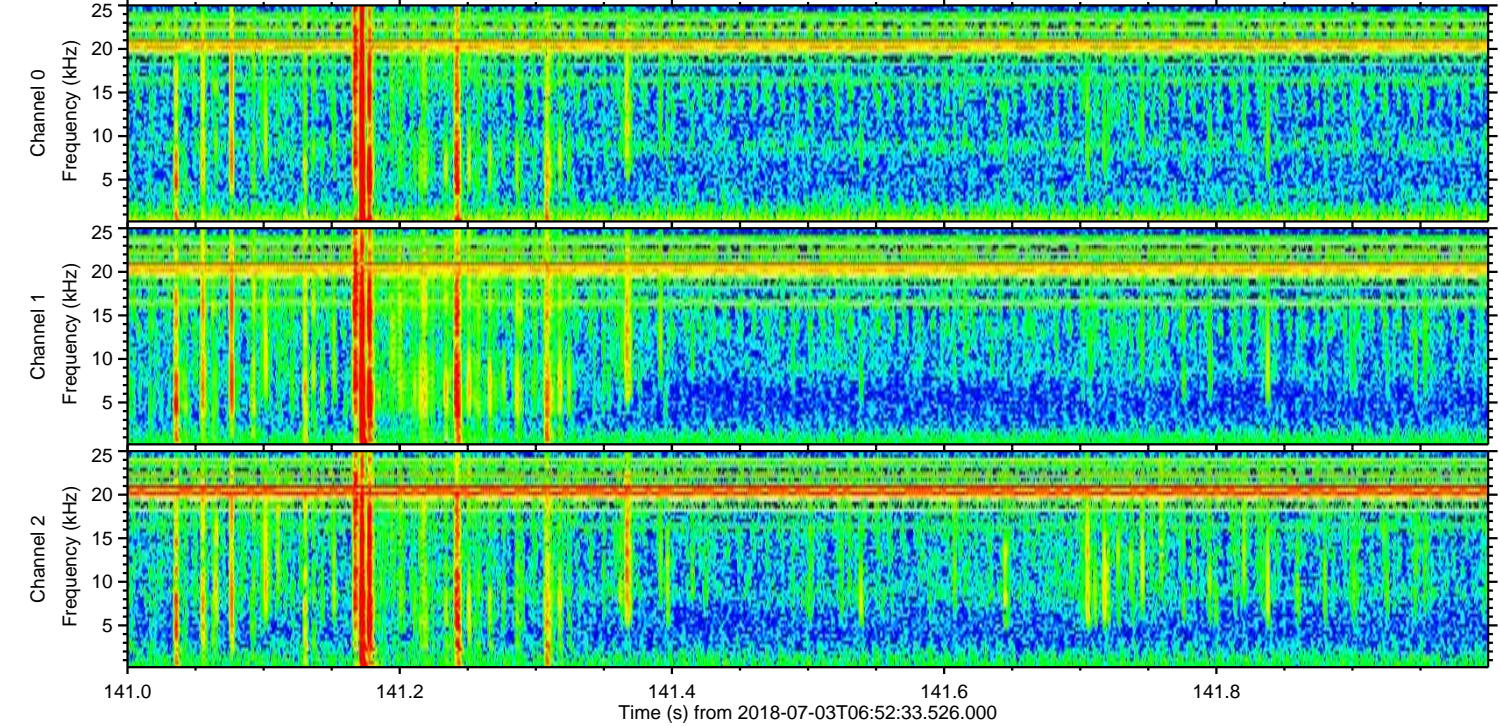
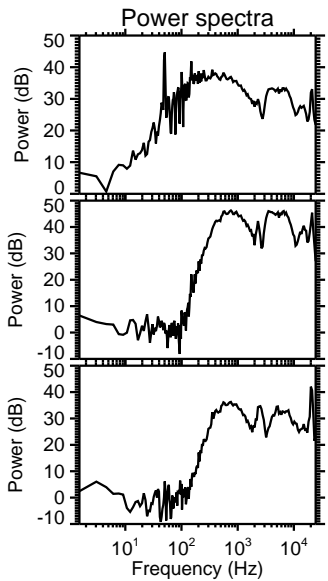
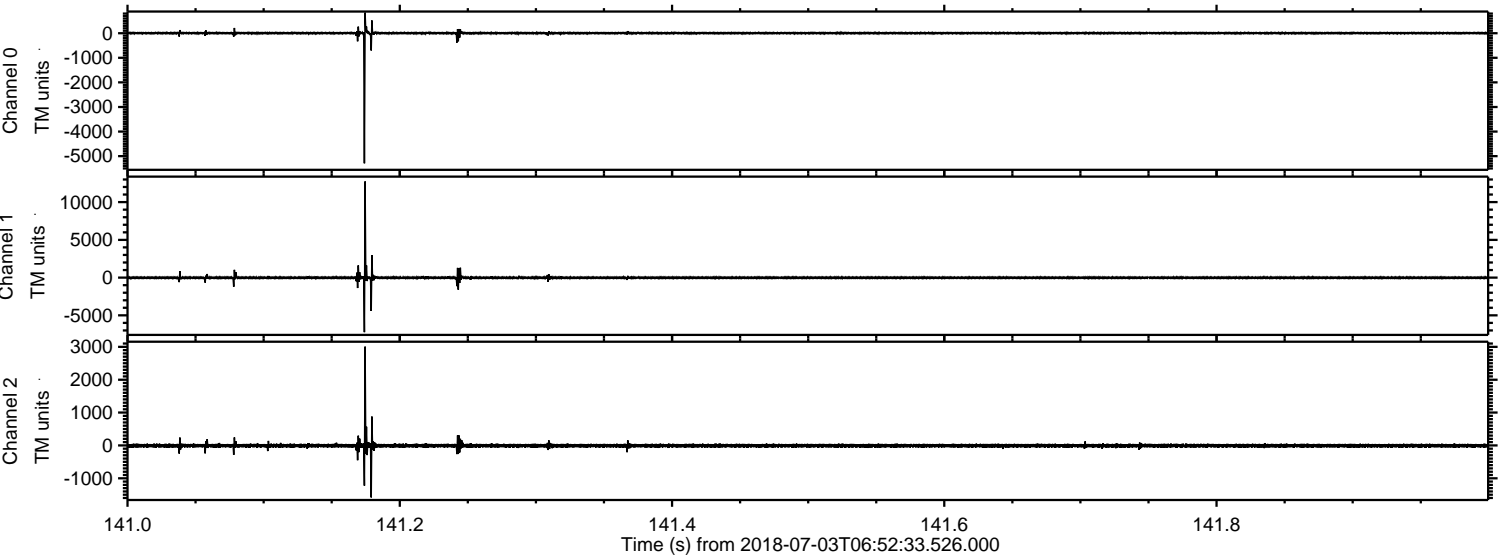
ELMAVAN 3D WAVEFORMS (Measured data sampled at 50 kHz) 51000 packets of 144 samples from 2018-07-03T06:52:33.526.000. Part 136/147

Processed Tue Jul 3 09:00:41 2018 by ELM ver.2012-10-06 from 001__elm20180703_065232__dat00.bin

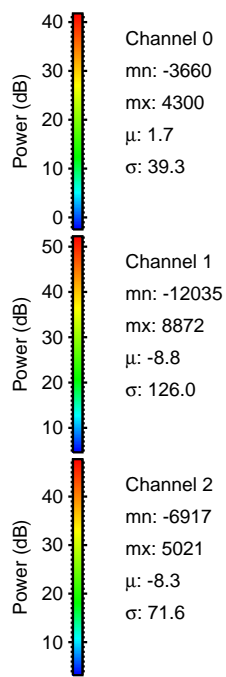
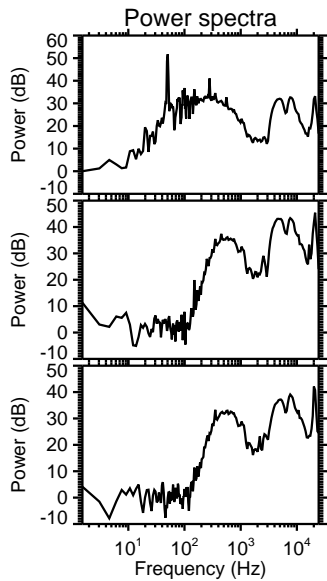
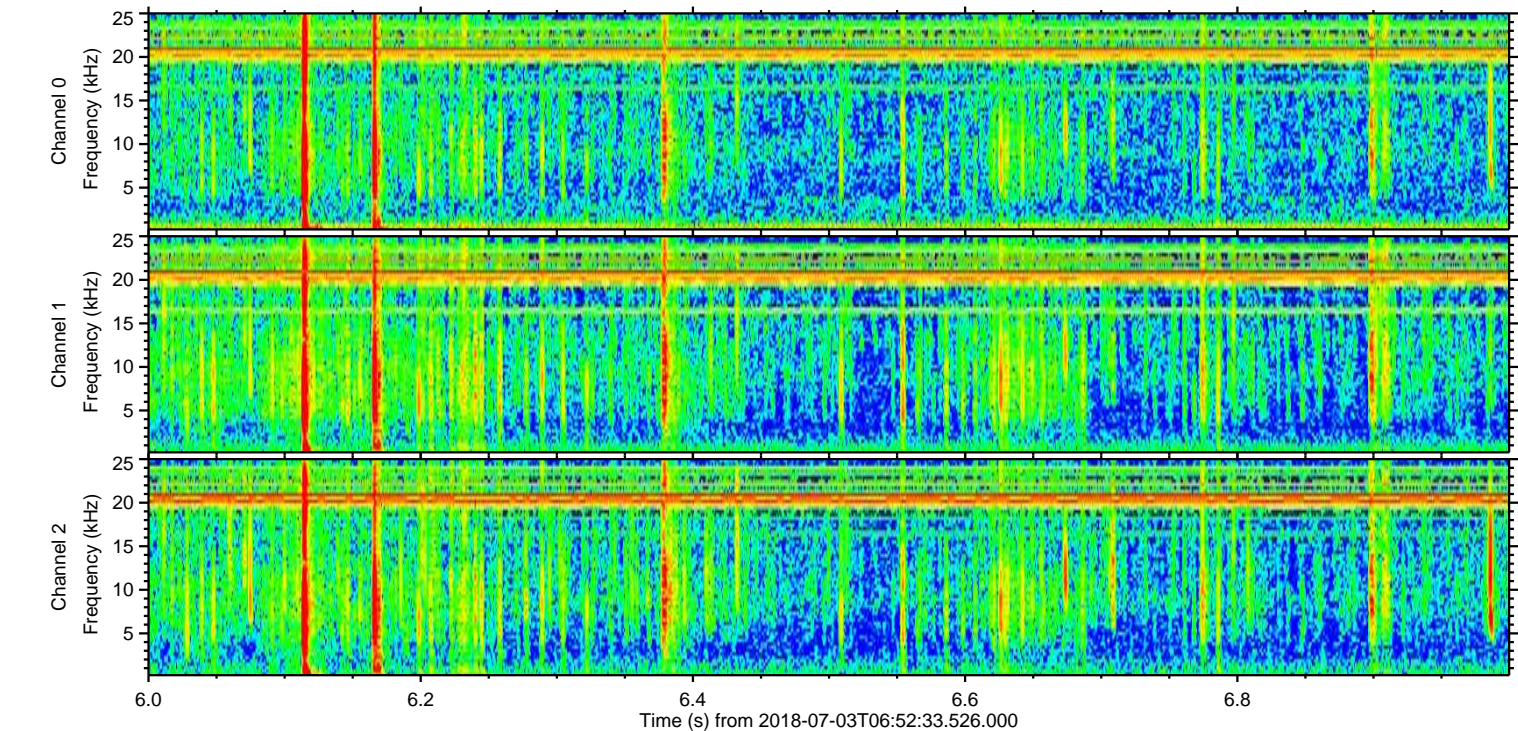
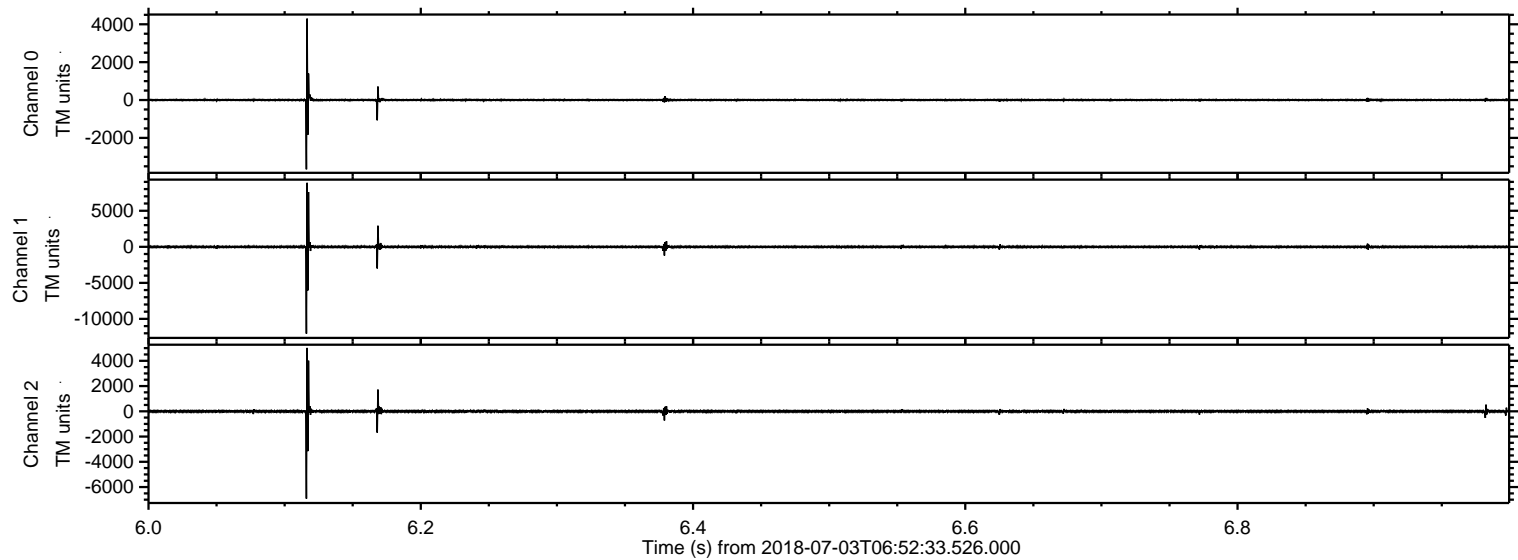


ELMAVAN 3D WAVEFORMS (Measured data sampled at 50 kHz) 51000 packets of 144 samples from 2018-07-03T06:52:33.526.000. Part 142/147

Processed Tue Jul 3 09:00:41 2018 by ELM ver.2012-10-06 from 001__elm20180703_065232__dat00.bin

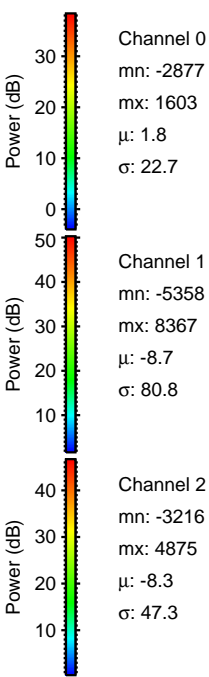
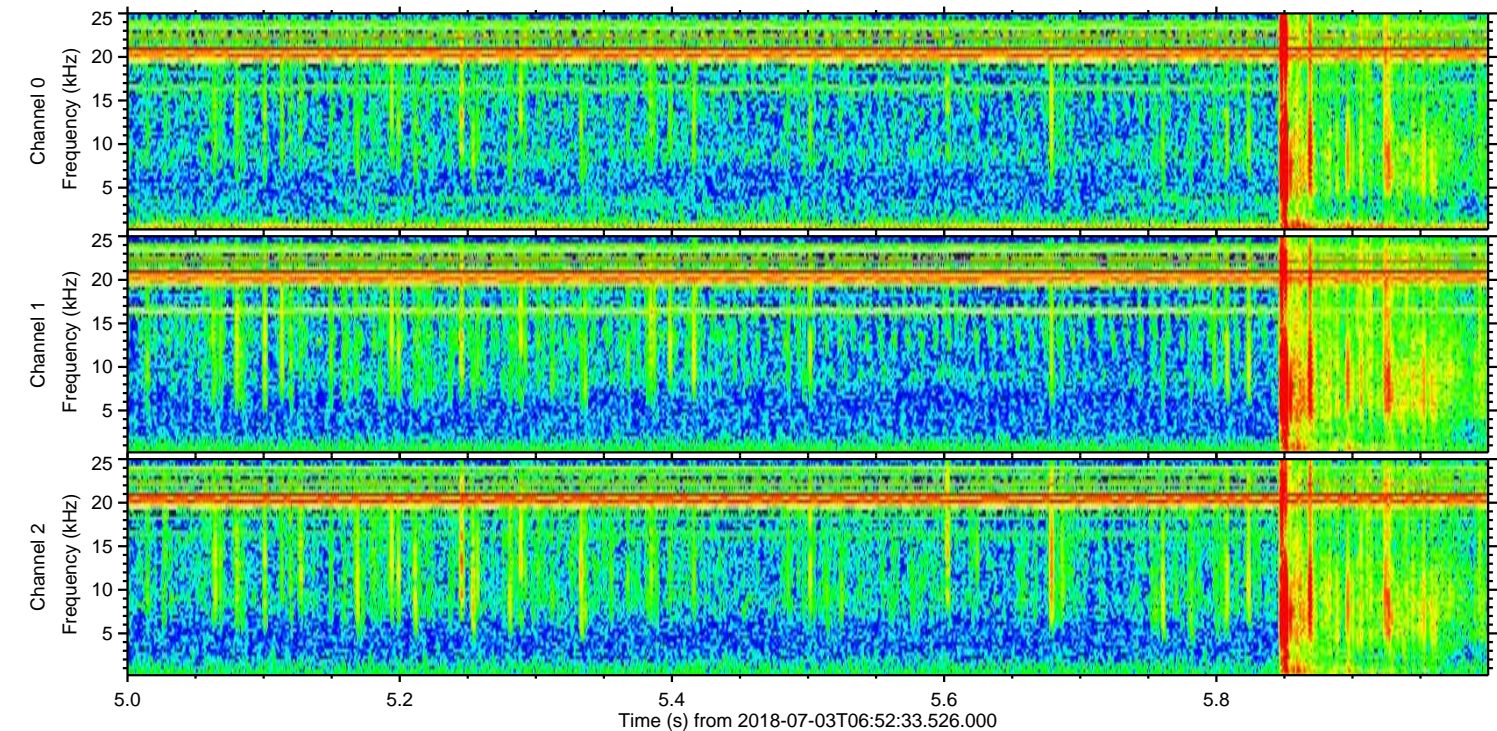
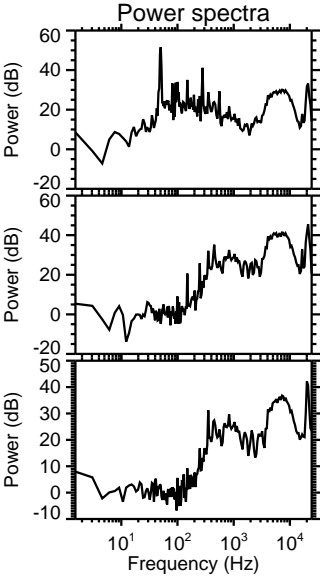
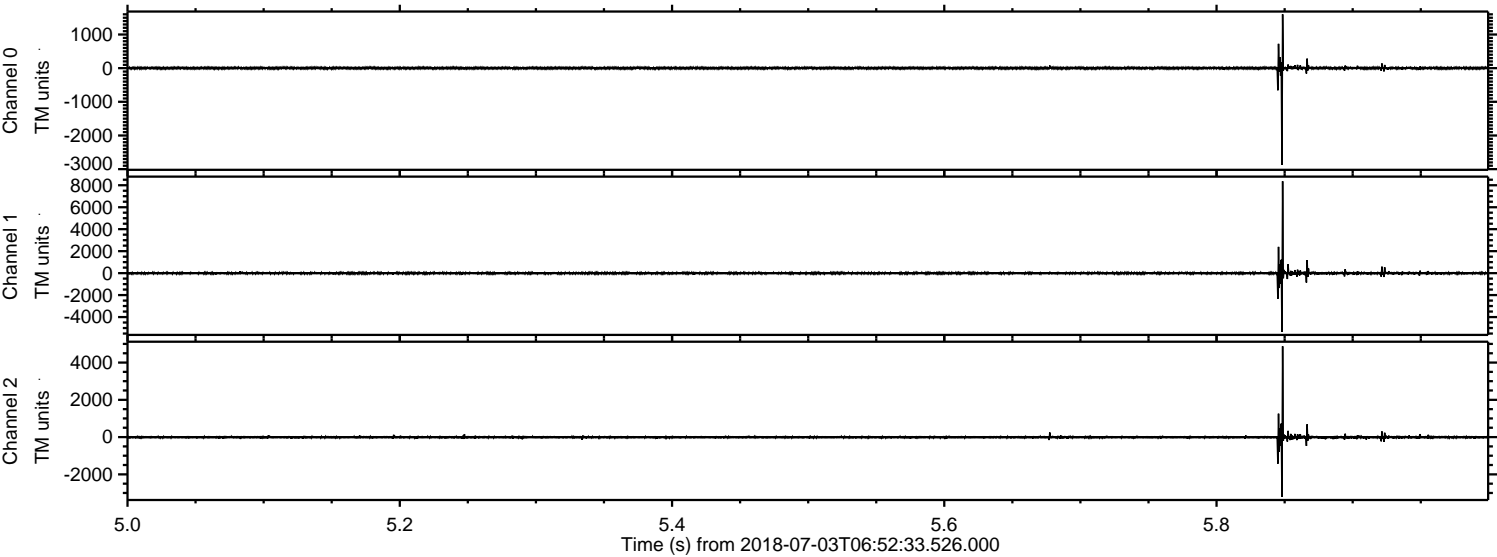


Processed Tue Jul 3 09:00:42 2018 by ELM ver.2012-10-06 from 001__elm20180703_065232__dat00.bin

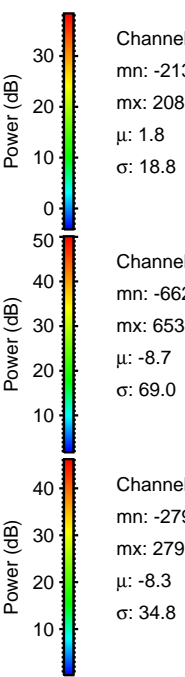
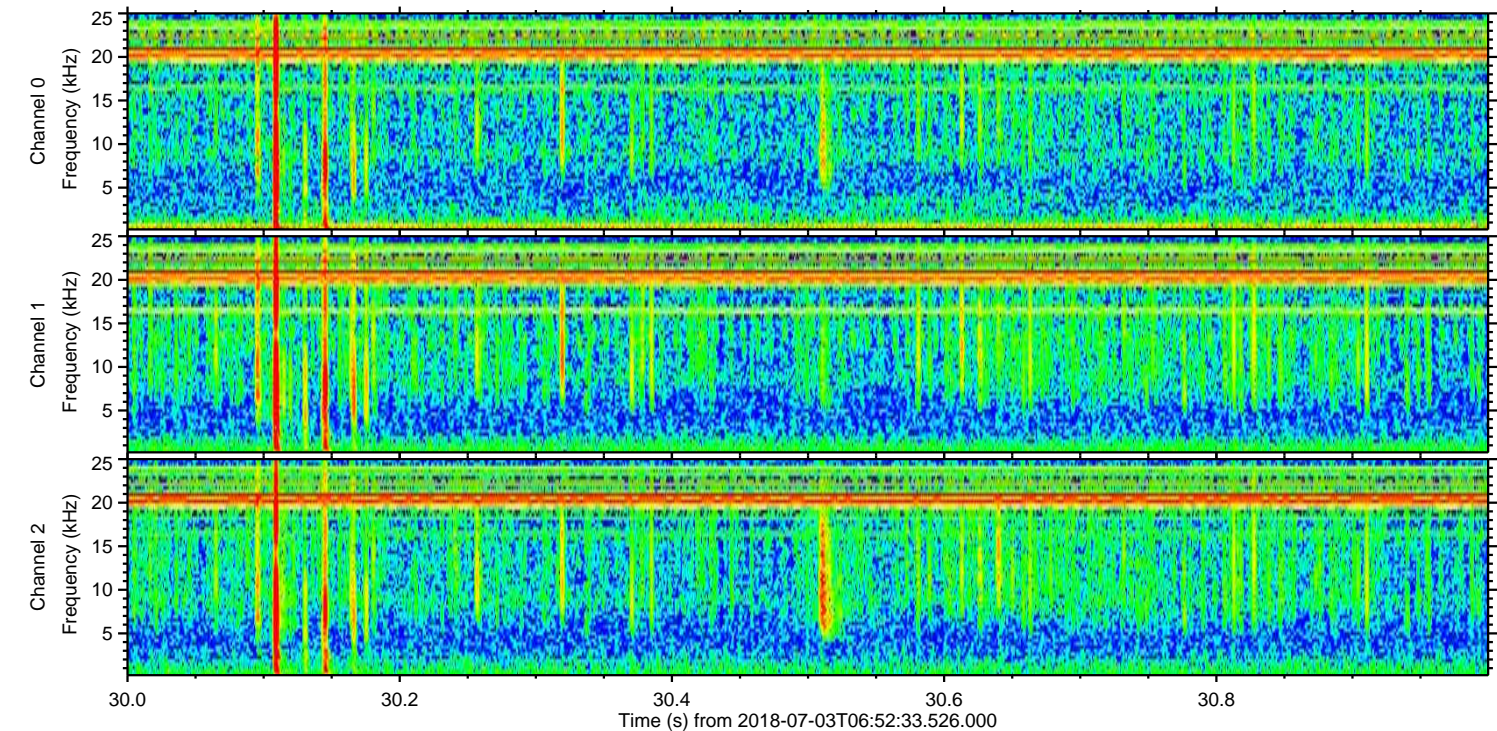
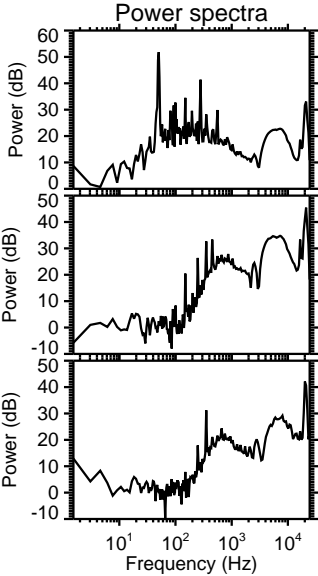
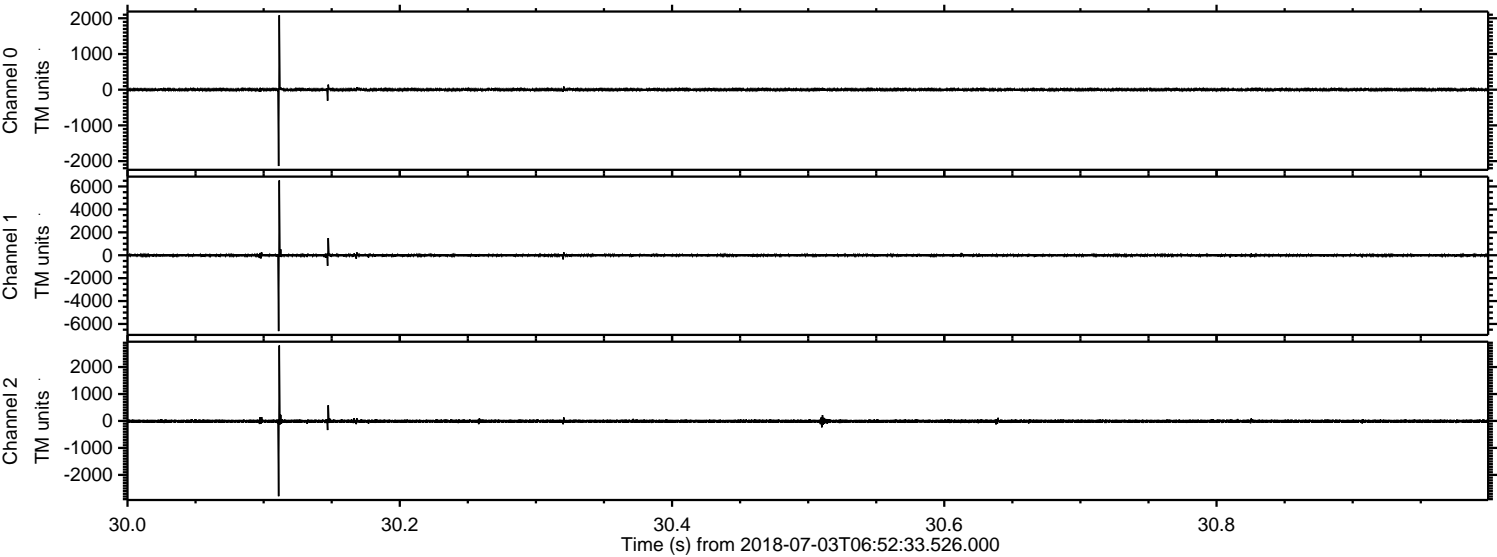


ELMAVAN 3D WAVEFORMS (Measured data sampled at 50 kHz) 51000 packets of 144 samples from 2018-07-03T06:52:33.526.000. Part 6/147

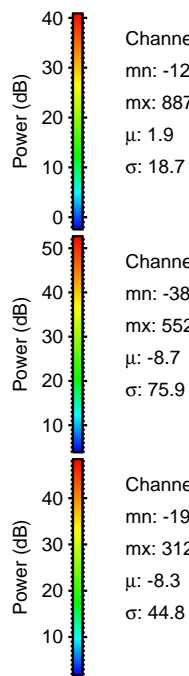
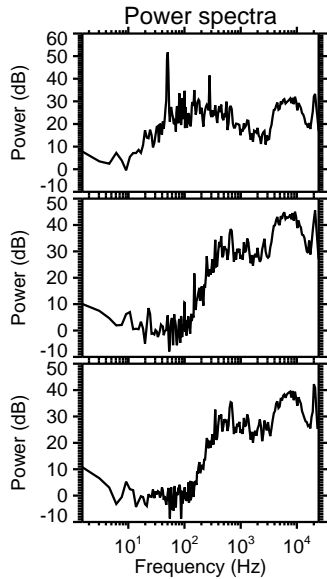
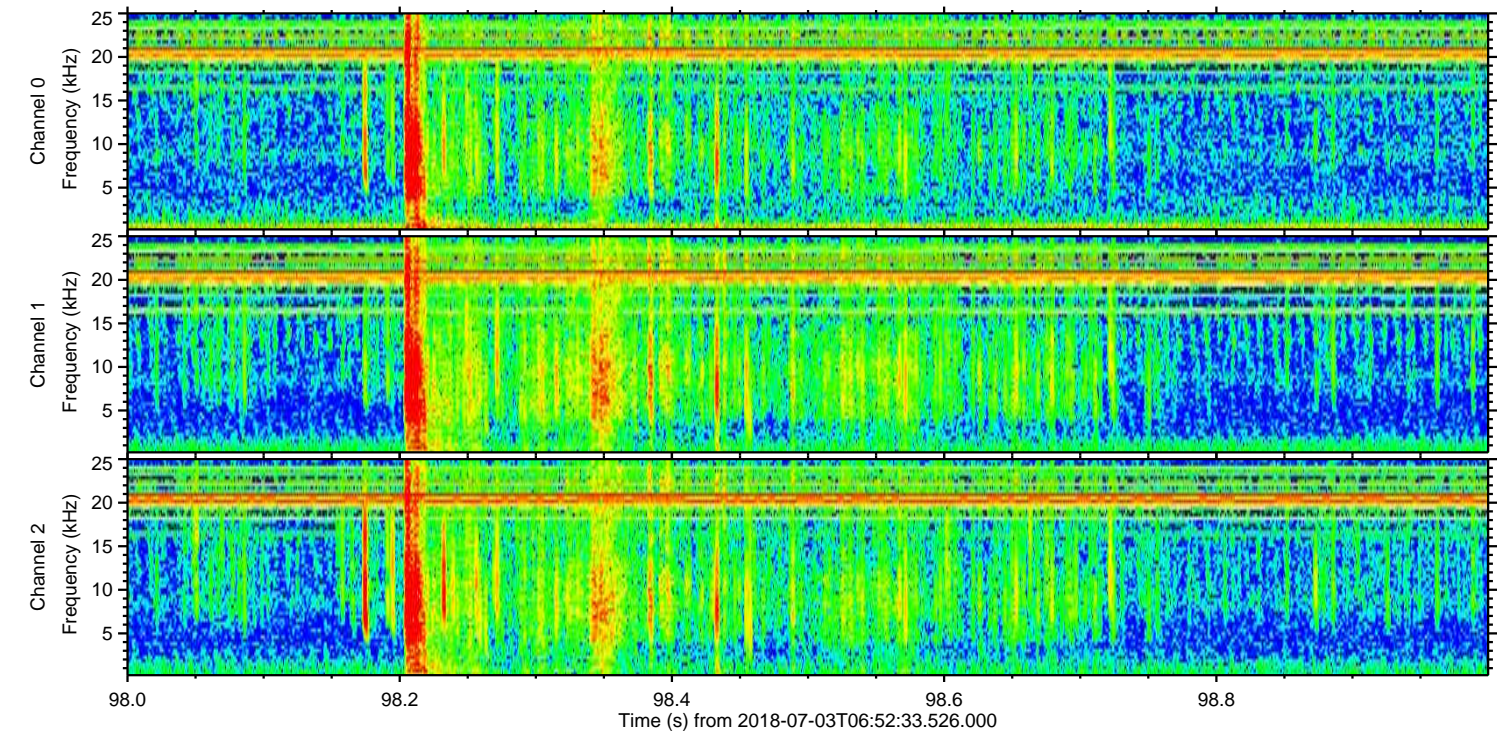
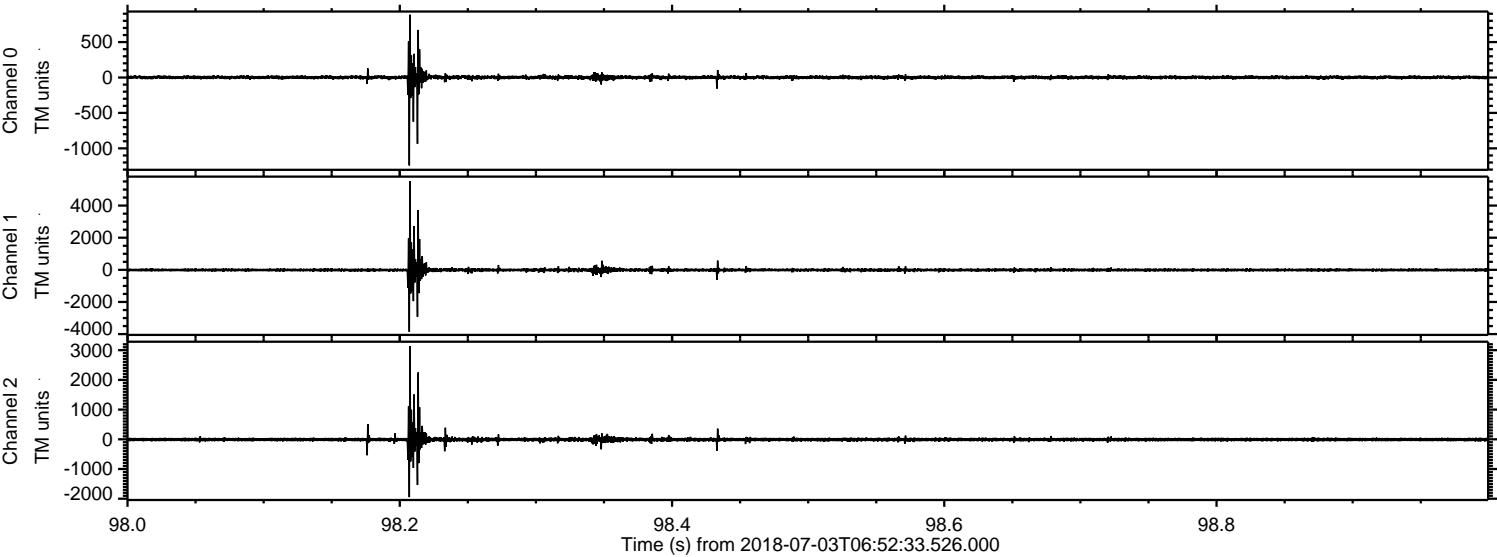
Processed Tue Jul 3 09:00:43 2018 by ELM ver.2012-10-06 from 001__elm20180703_065232__dat00.bin



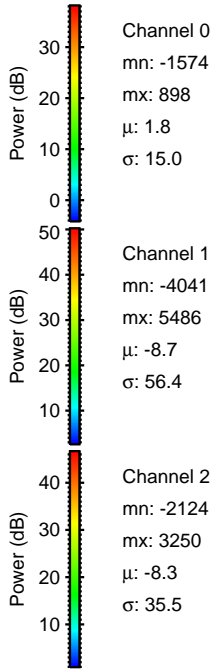
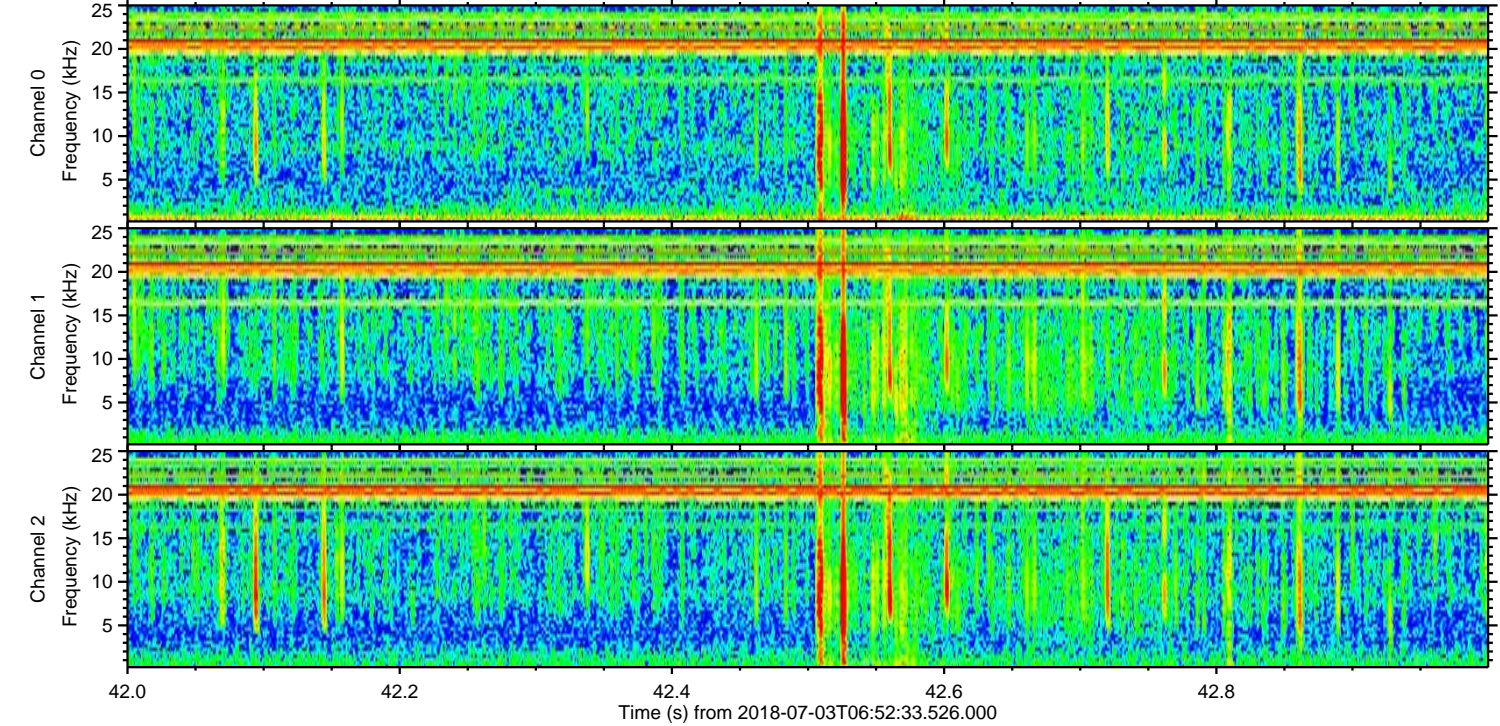
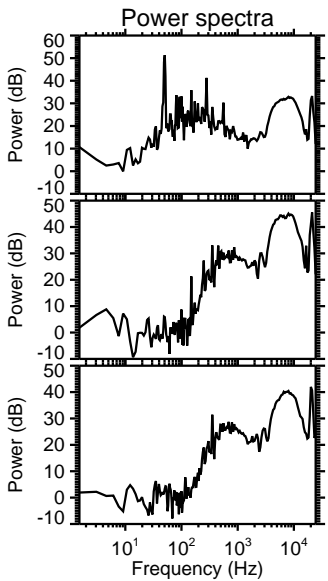
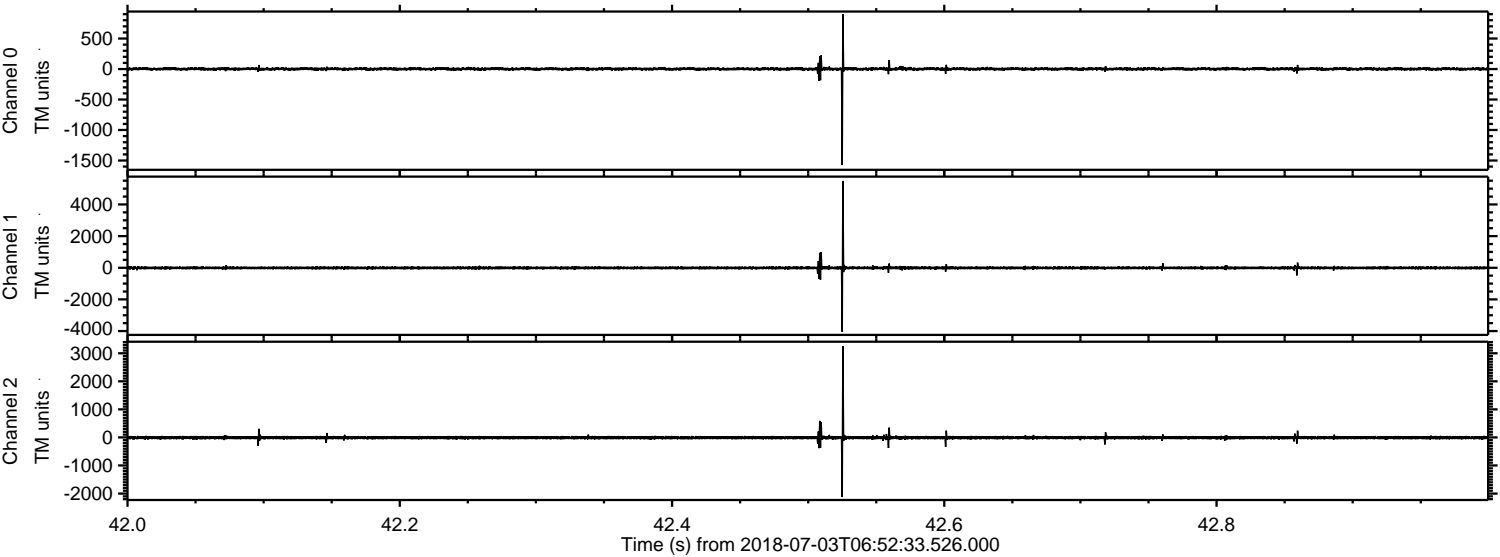
Processed Tue Jul 3 09:00:44 2018 by ELM ver.2012-10-06 from 001__elm20180703_065232__dat00.bin



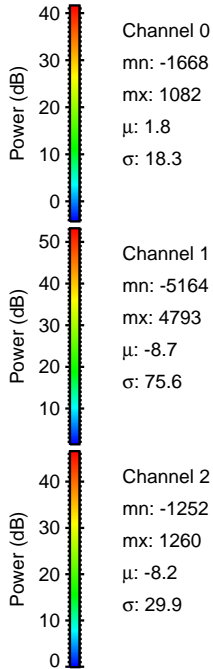
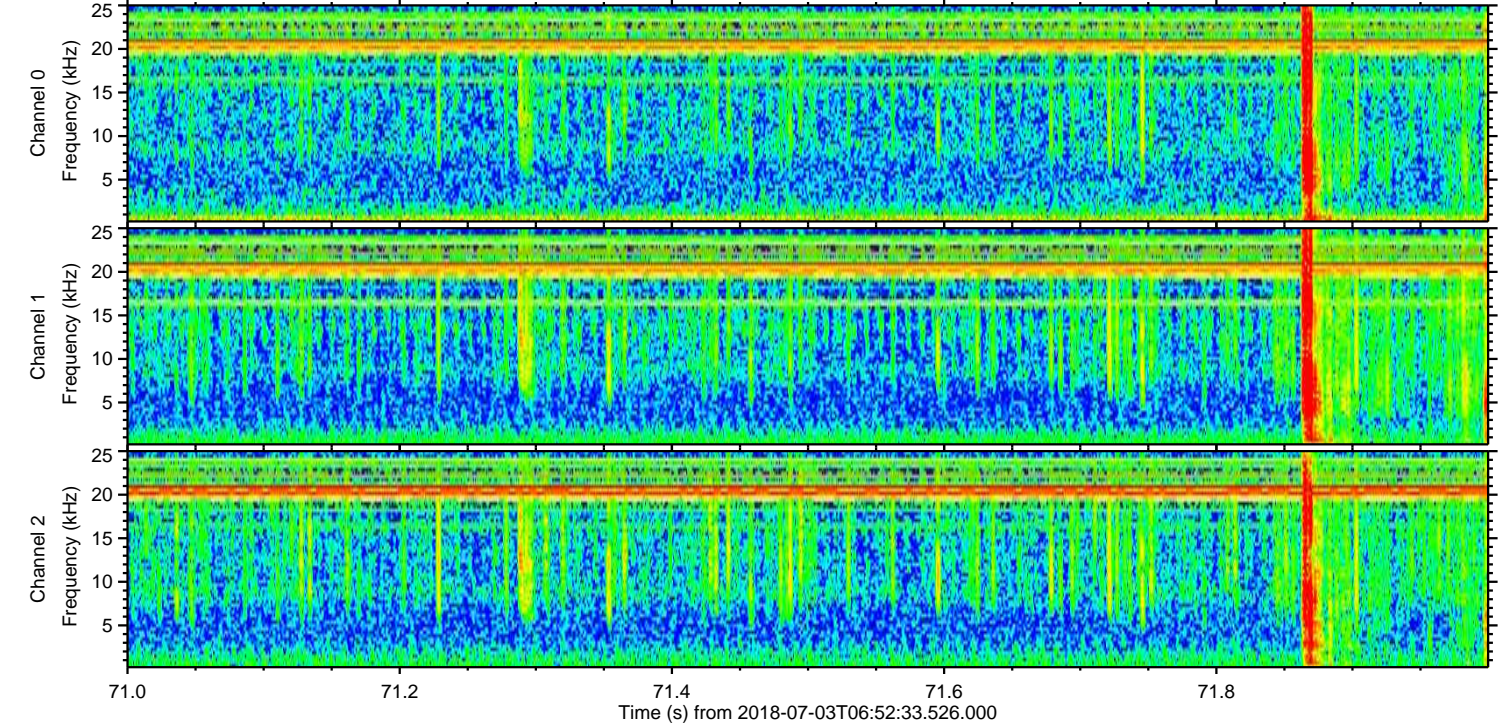
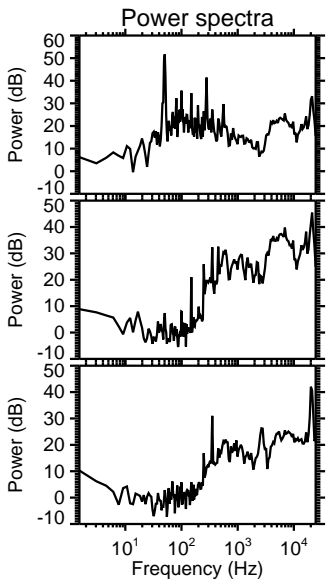
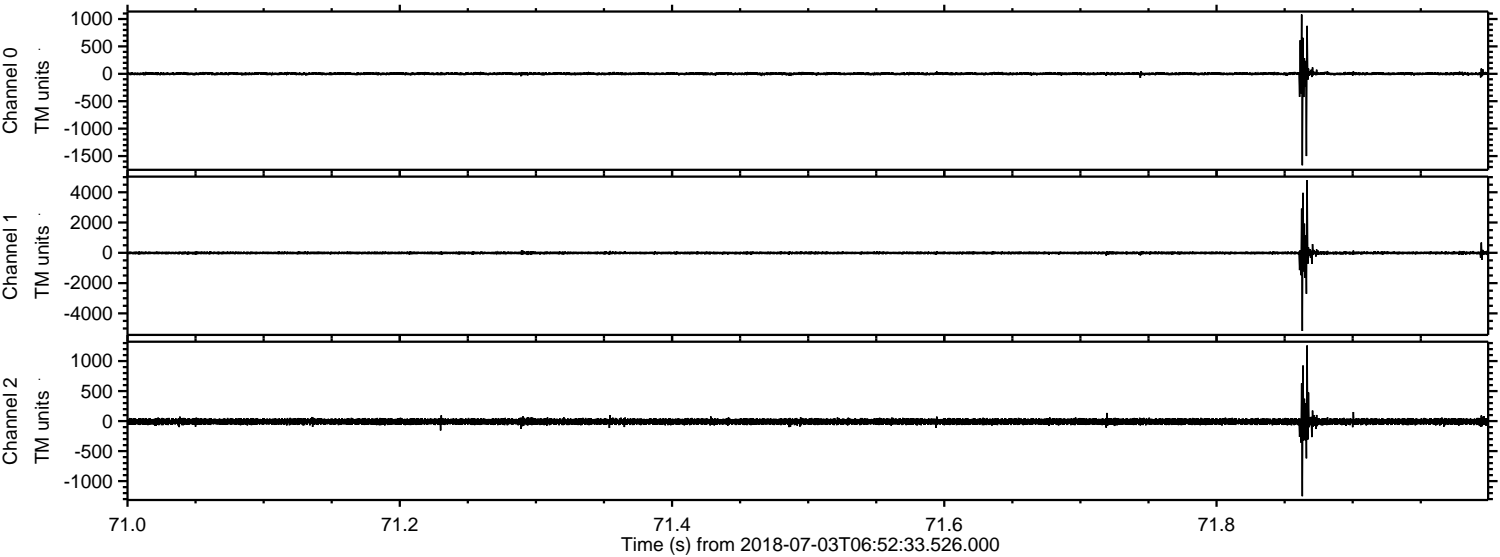
Processed Tue Jul 3 09:00:44 2018 by ELM ver.2012-10-06 from 001__elm20180703_065232__dat00.bin



Processed Tue Jul 3 09:00:45 2018 by ELM ver.2012-10-06 from 001__elm20180703_065232__dat00.bin



Processed Tue Jul 3 09:00:46 2018 by ELM ver.2012-10-06 from 001__elm20180703_065232__dat00.bin



Channel 0
mn: -1668
mx: 1082
 μ : 1.8
 σ : 18.3

Channel 1
mn: -5164
mx: 4793
 μ : -8.7
 σ : 75.6

Channel 2
mn: -1252
mx: 1260
 μ : -8.2
 σ : 29.9

Processed Tue Jul 3 09:00:47 2018 by ELM ver.2012-10-06 from 001__elm20180703_065232__dat00.bin

