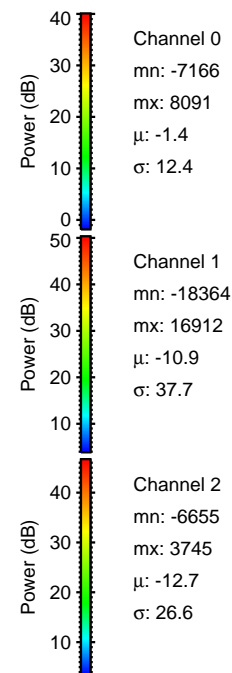
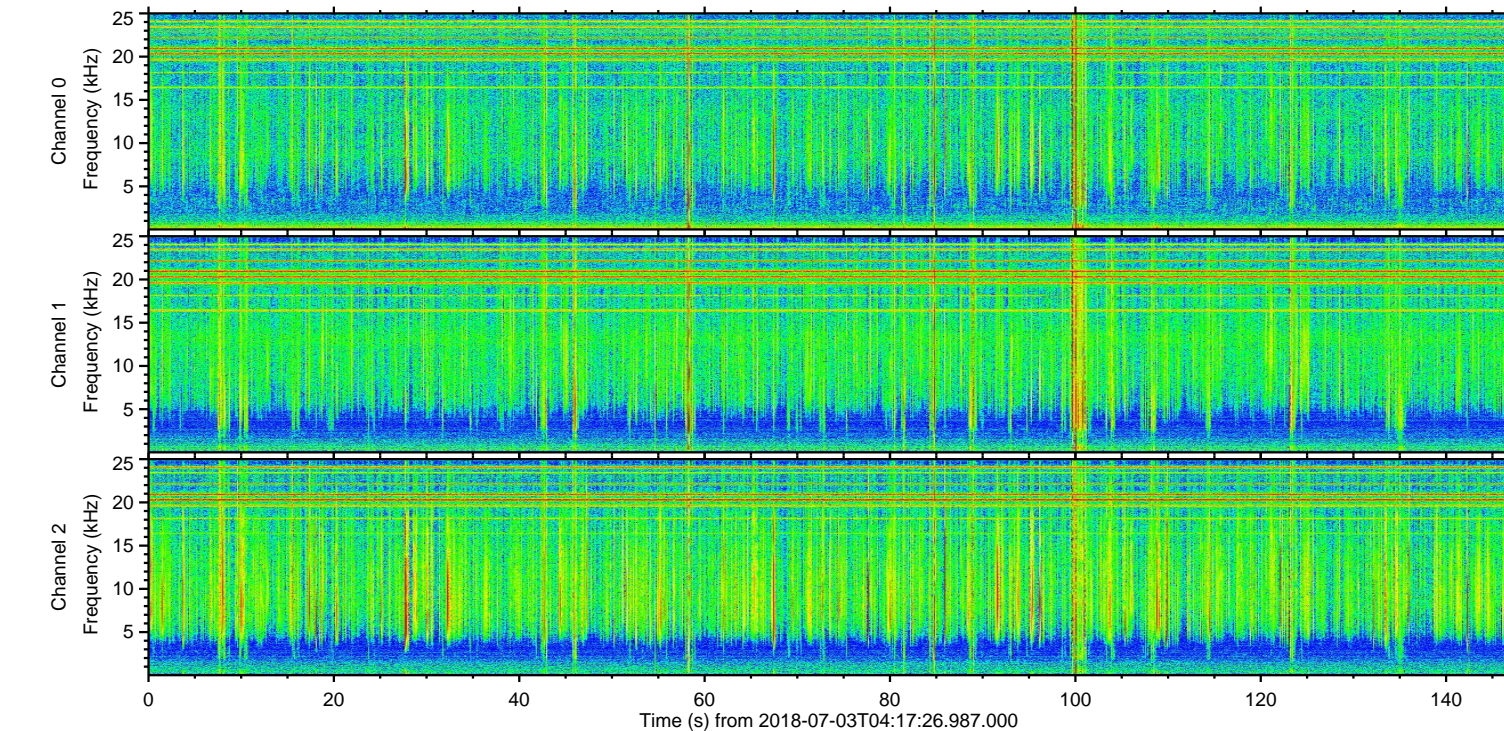
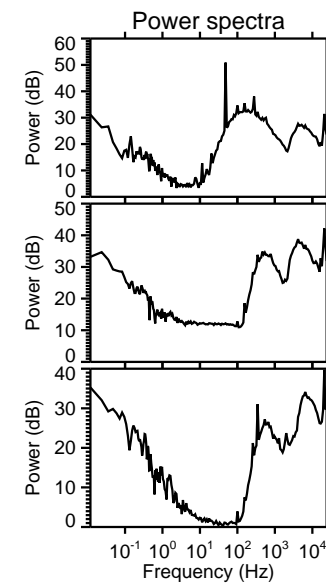
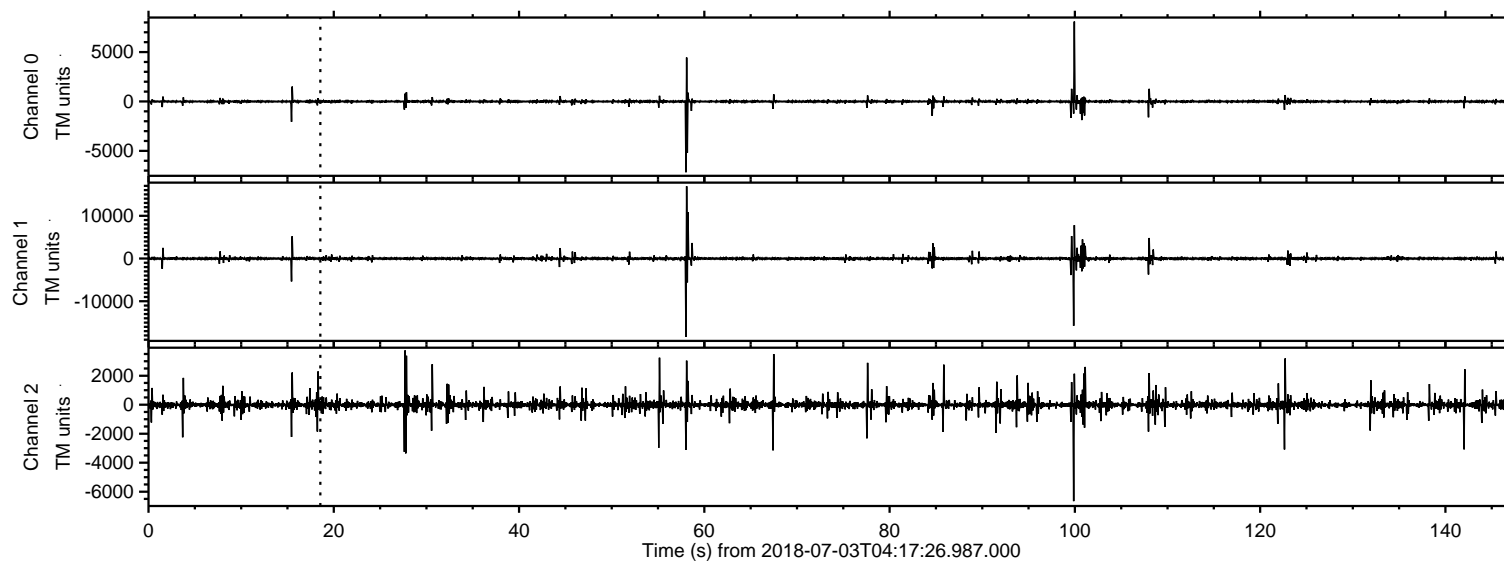
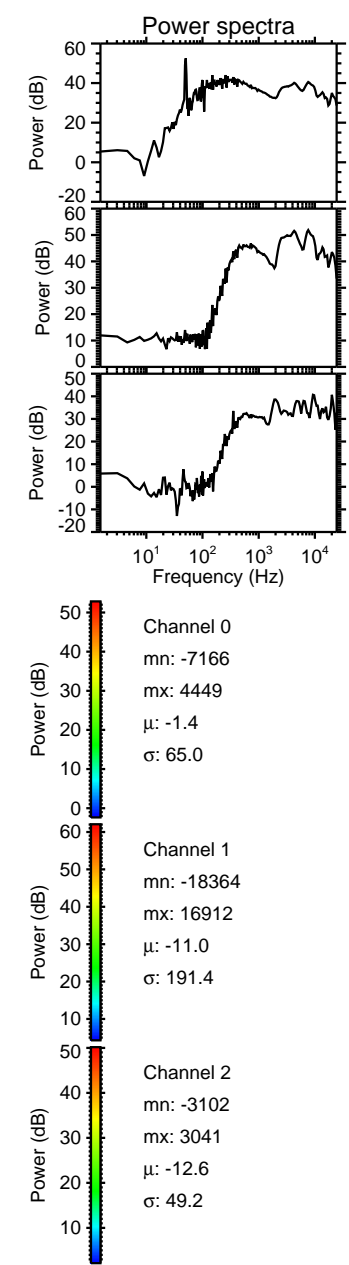
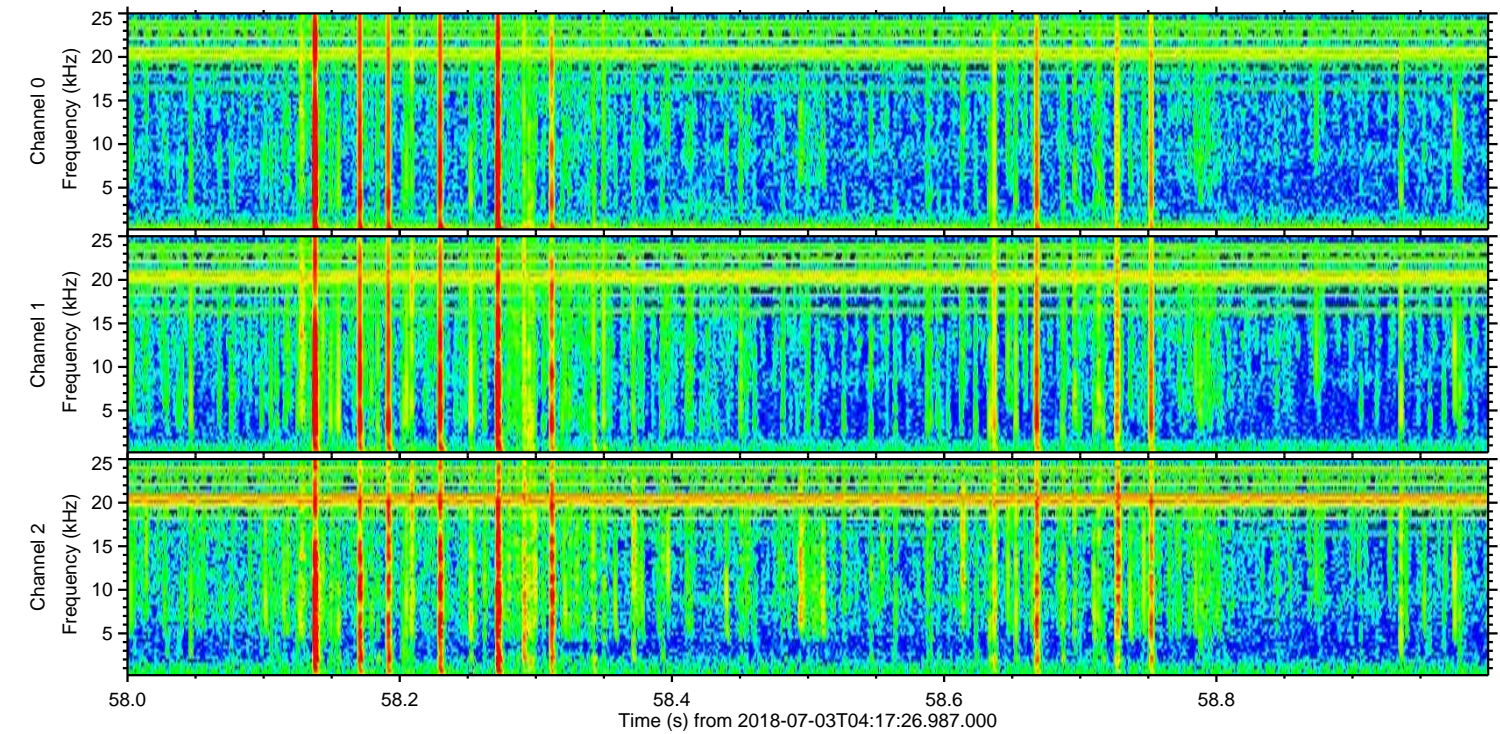
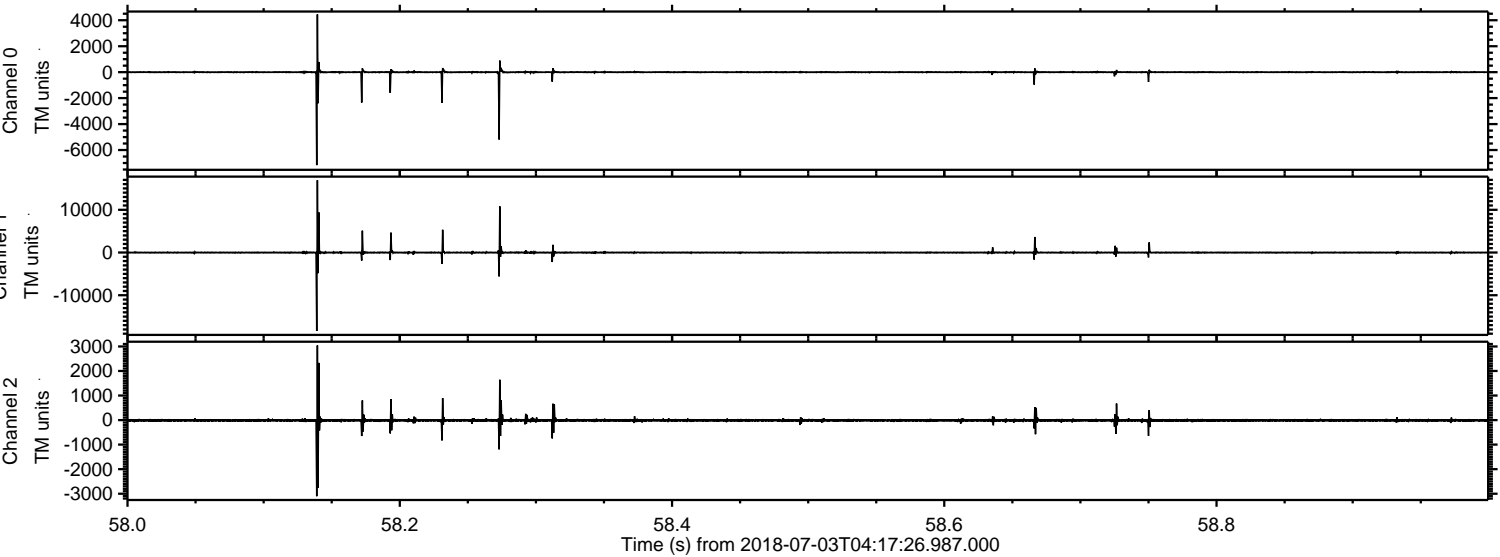


ELMAVAN 3D WAVEFORMS (Measured data sampled at 50 kHz) 50999 packets of 144 samples from 2018-07-03T04:17:26.987.000.

Processed Tue Jul 3 06:25:21 2018 by ELM ver.2012-10-06 from 001__elm20180703_041725__dat00.bin

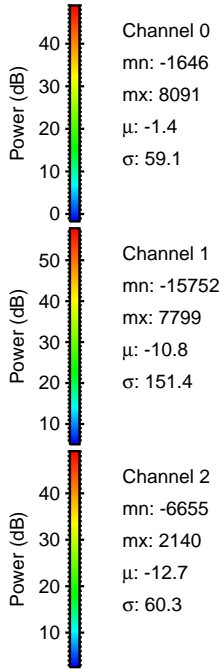
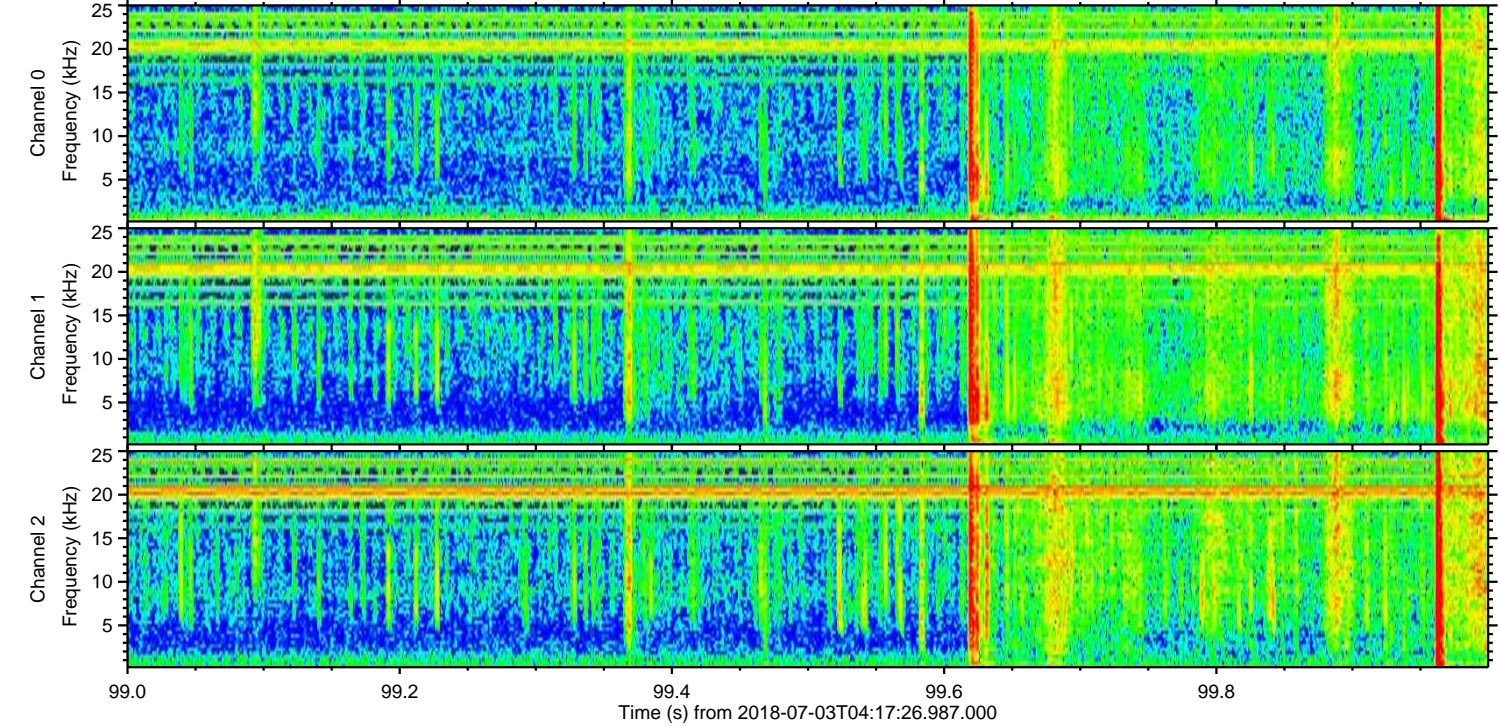
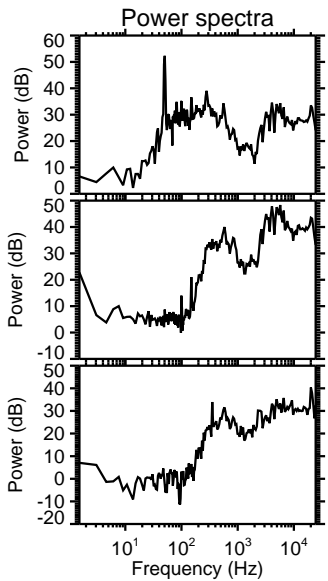
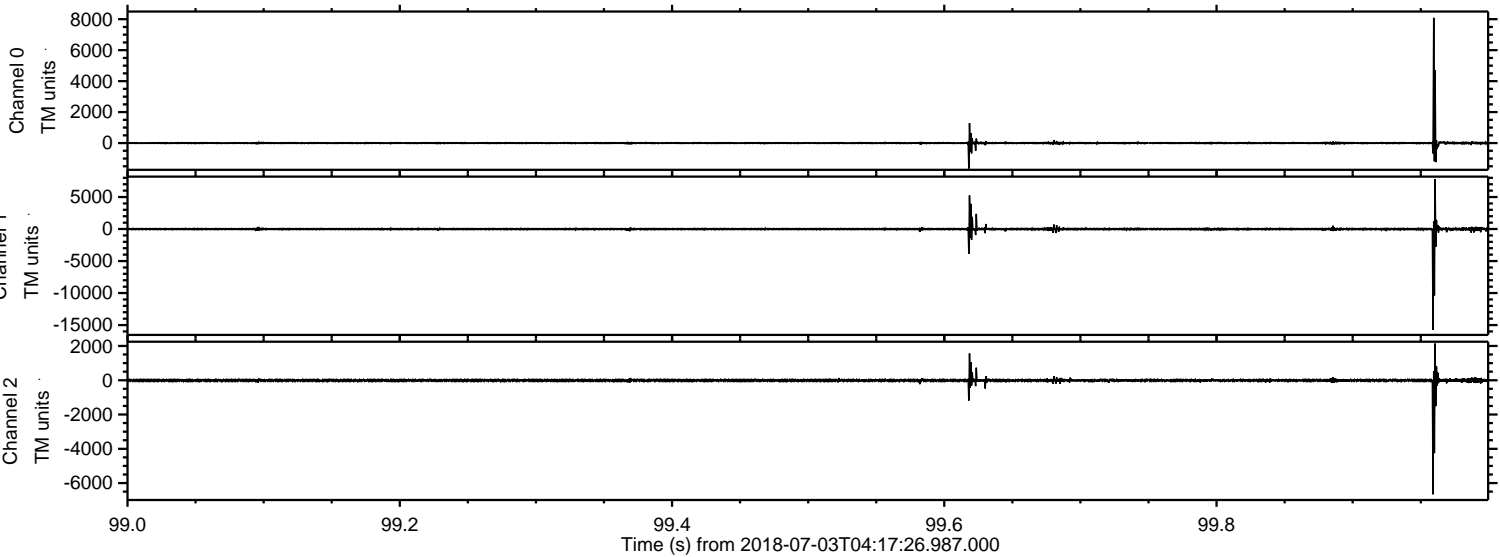


Processed Tue Jul 3 06:25:27 2018 by ELM ver.2012-10-06 from 001__elm20180703_041725__dat00.bin

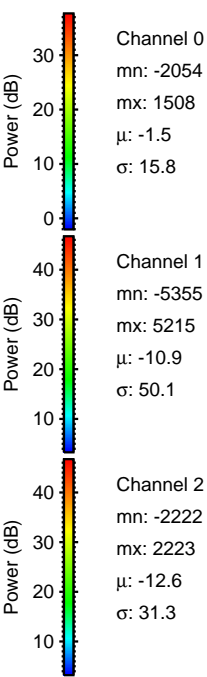
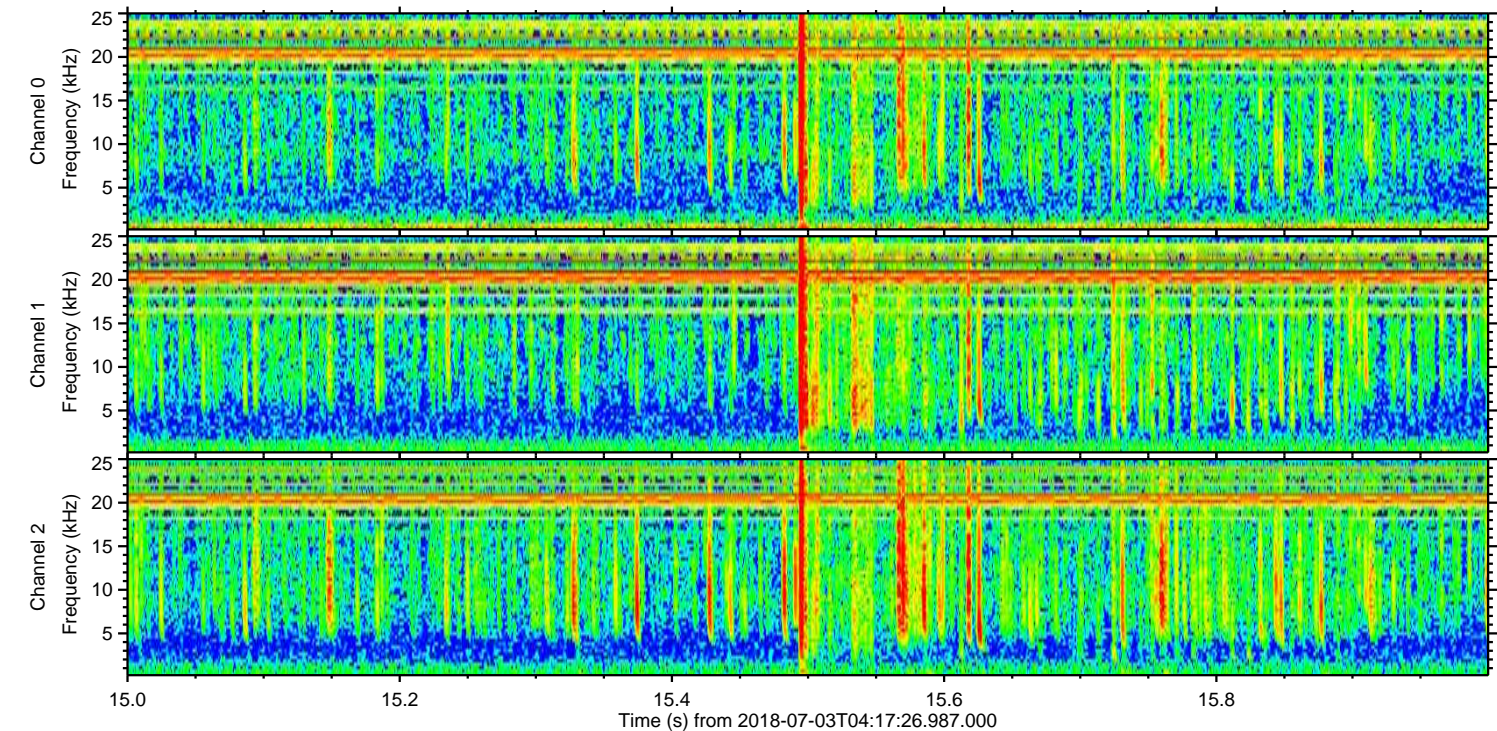
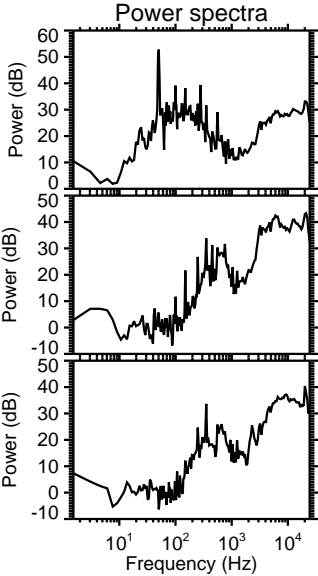
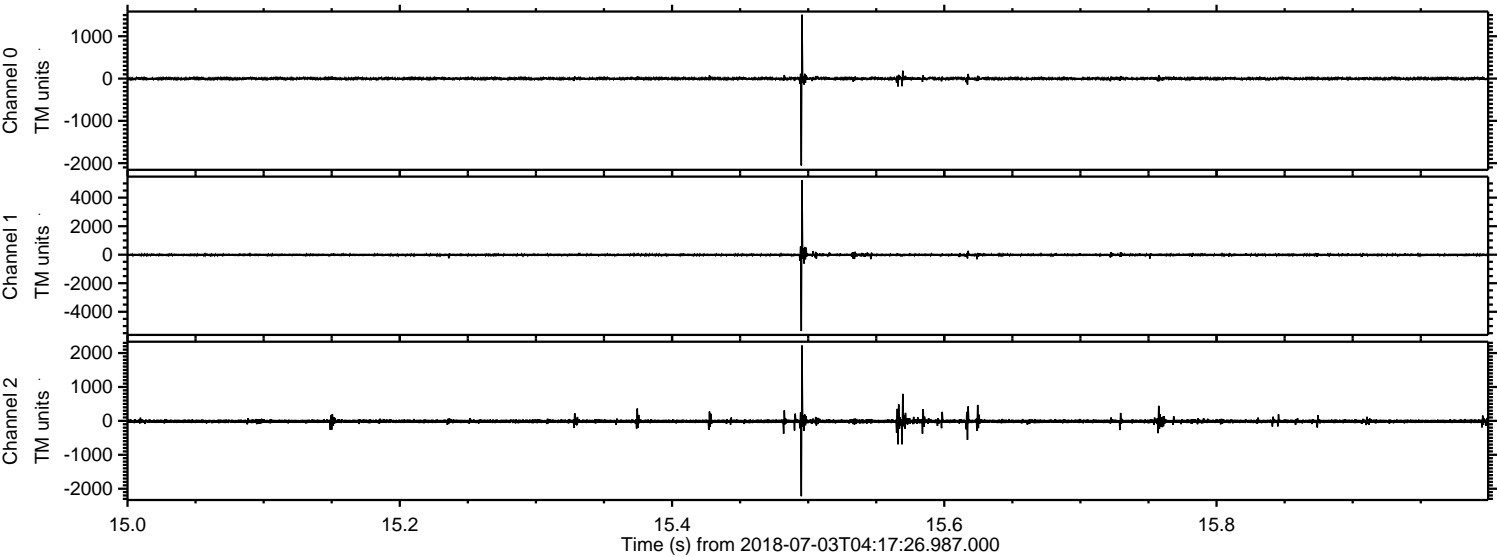


ELMAVAN 3D WAVEFORMS (Measured data sampled at 50 kHz) 50999 packets of 144 samples from 2018-07-03T04:17:26.987.000. Part 100/147

Processed Tue Jul 3 06:25:28 2018 by ELM ver.2012-10-06 from 001__elm20180703_041725__dat00.bin

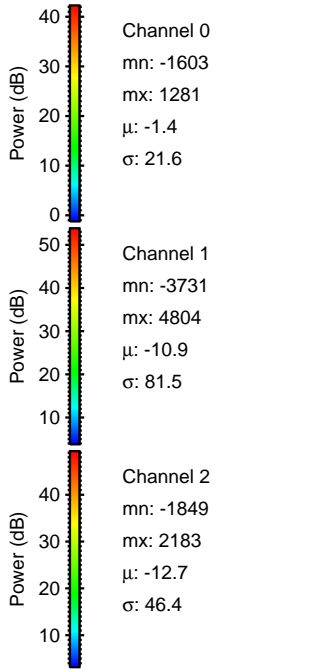
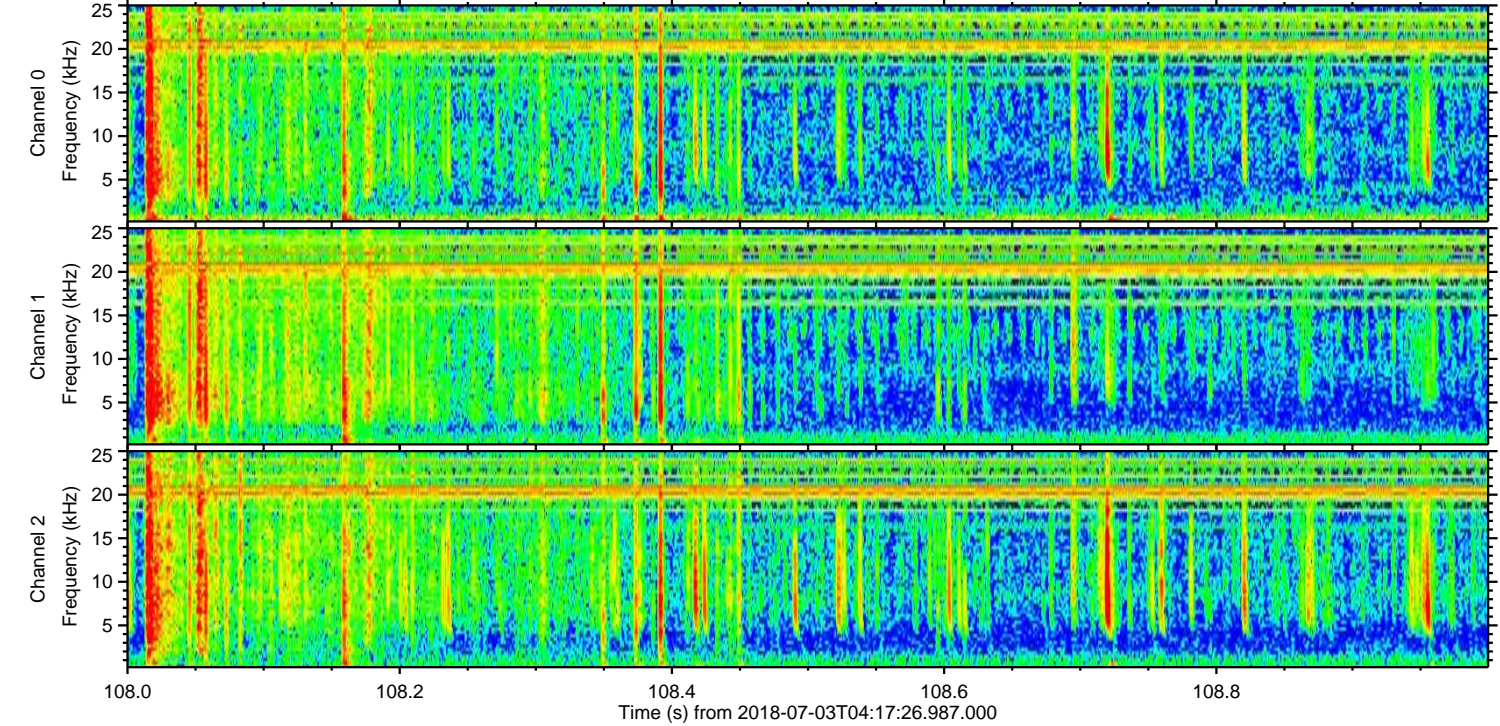
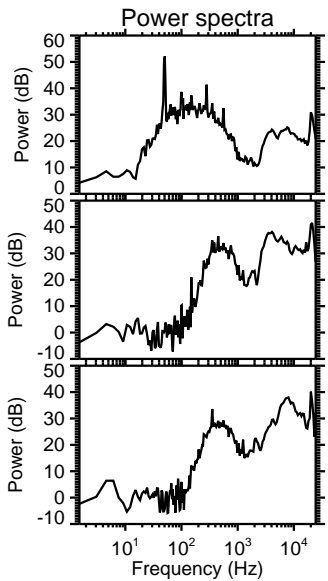
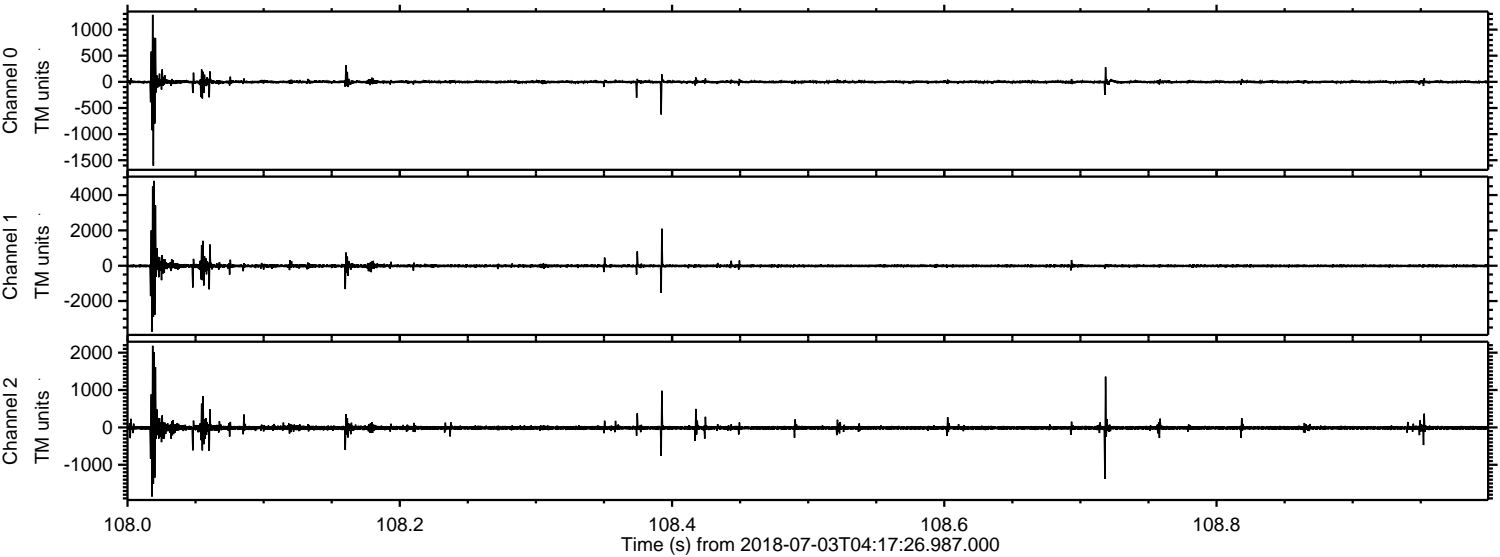


Processed Tue Jul 3 06:25:29 2018 by ELM ver.2012-10-06 from 001__elm20180703_041725__dat00.bin

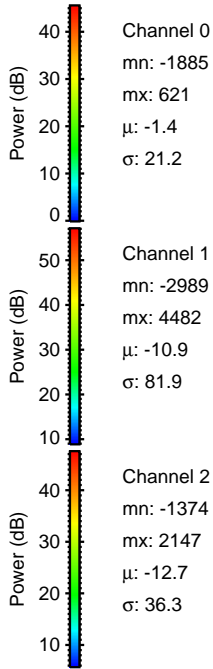
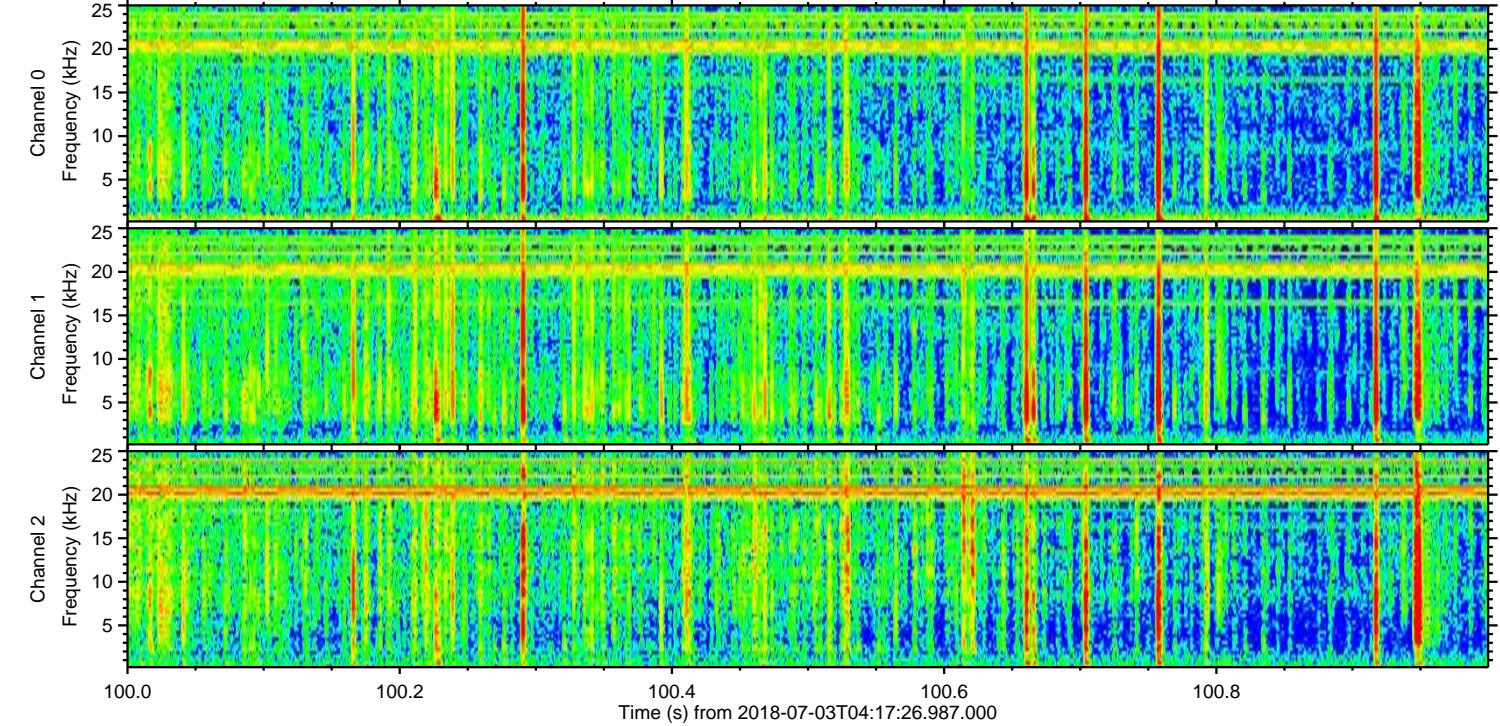
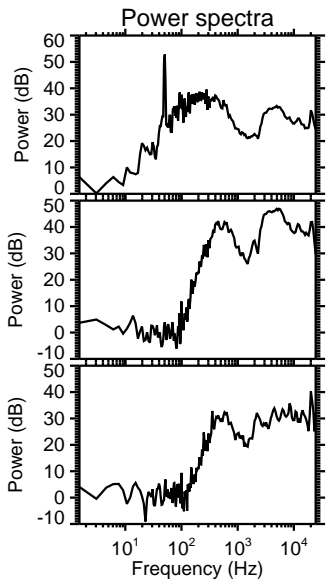
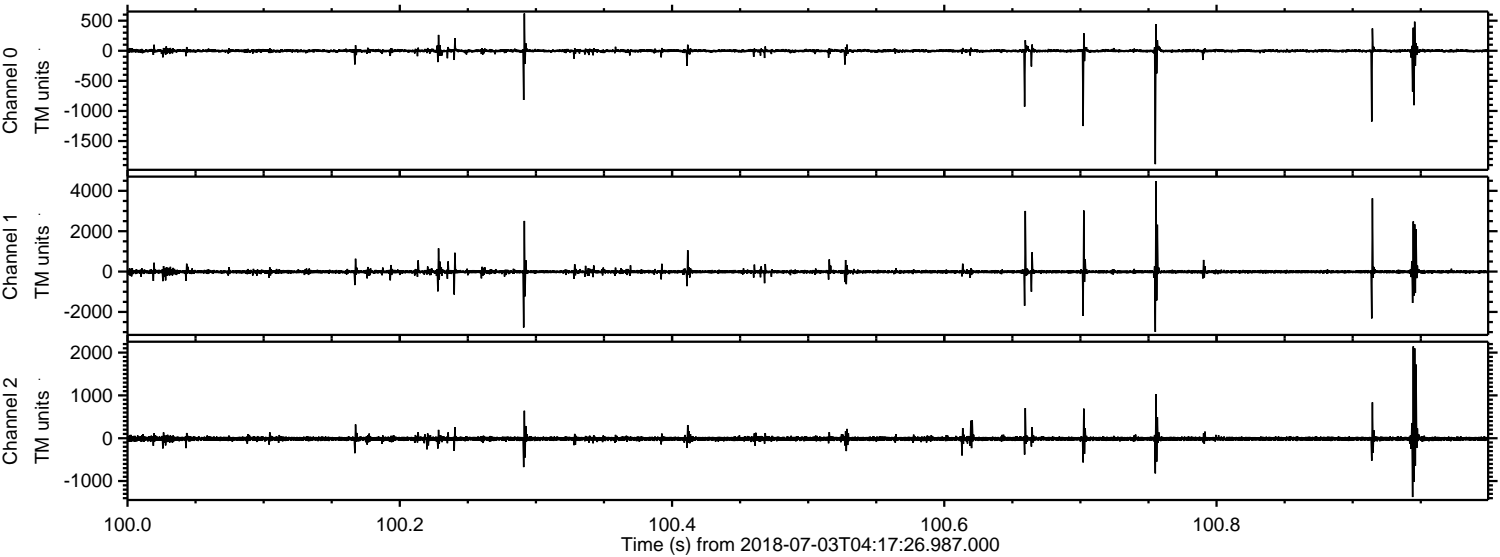


ELMAVAN 3D WAVEFORMS (Measured data sampled at 50 kHz) 50999 packets of 144 samples from 2018-07-03T04:17:26.987.000. Part 109/147

Processed Tue Jul 3 06:25:29 2018 by ELM ver.2012-10-06 from 001__elm20180703_041725__dat00.bin



Processed Tue Jul 3 06:25:30 2018 by ELM ver.2012-10-06 from 001__elm20180703_041725__dat00.bin

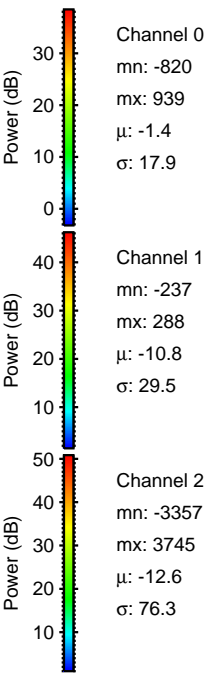
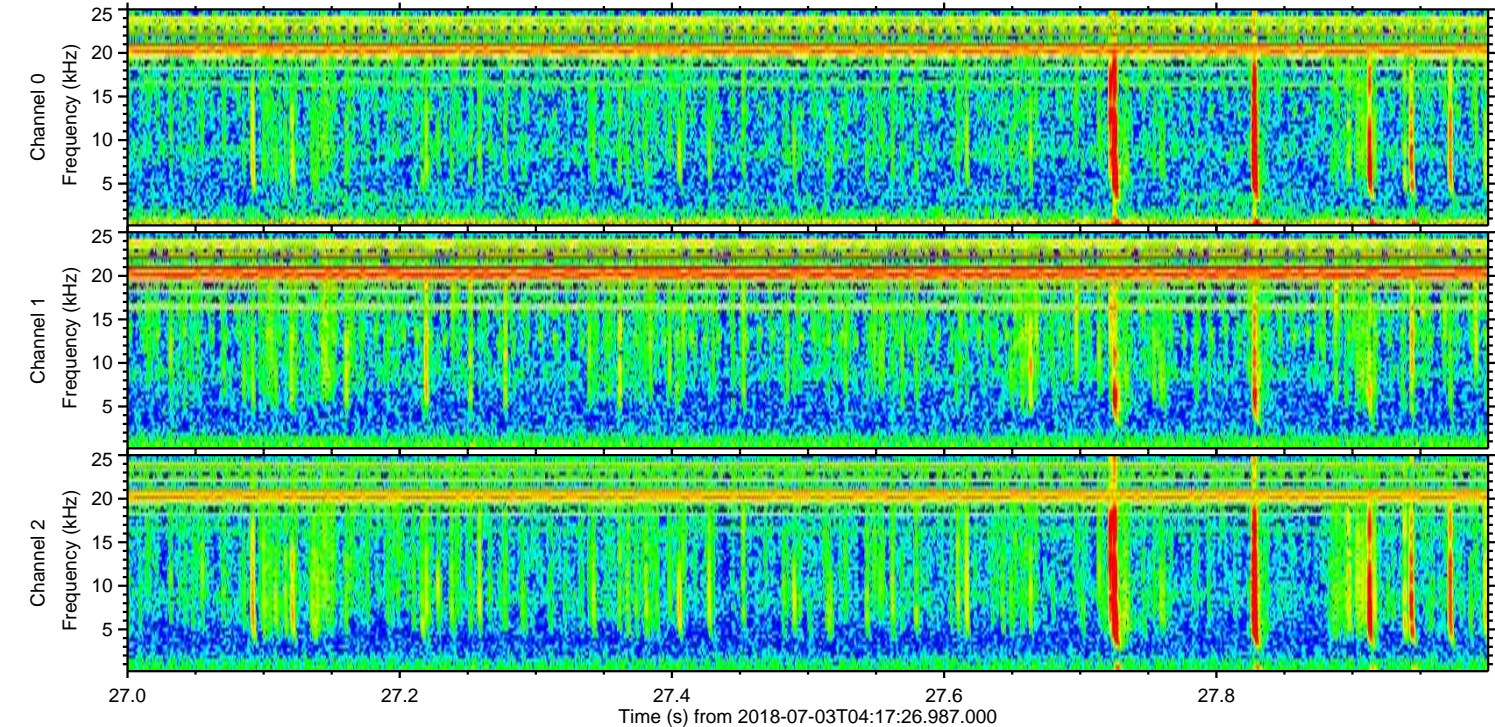
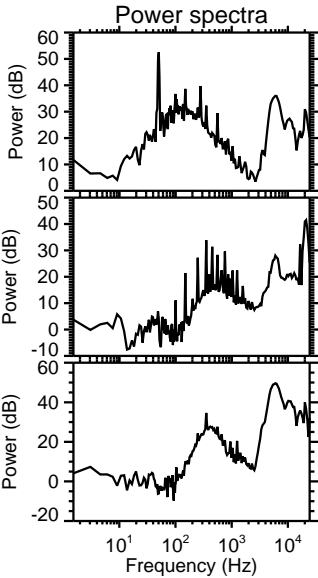
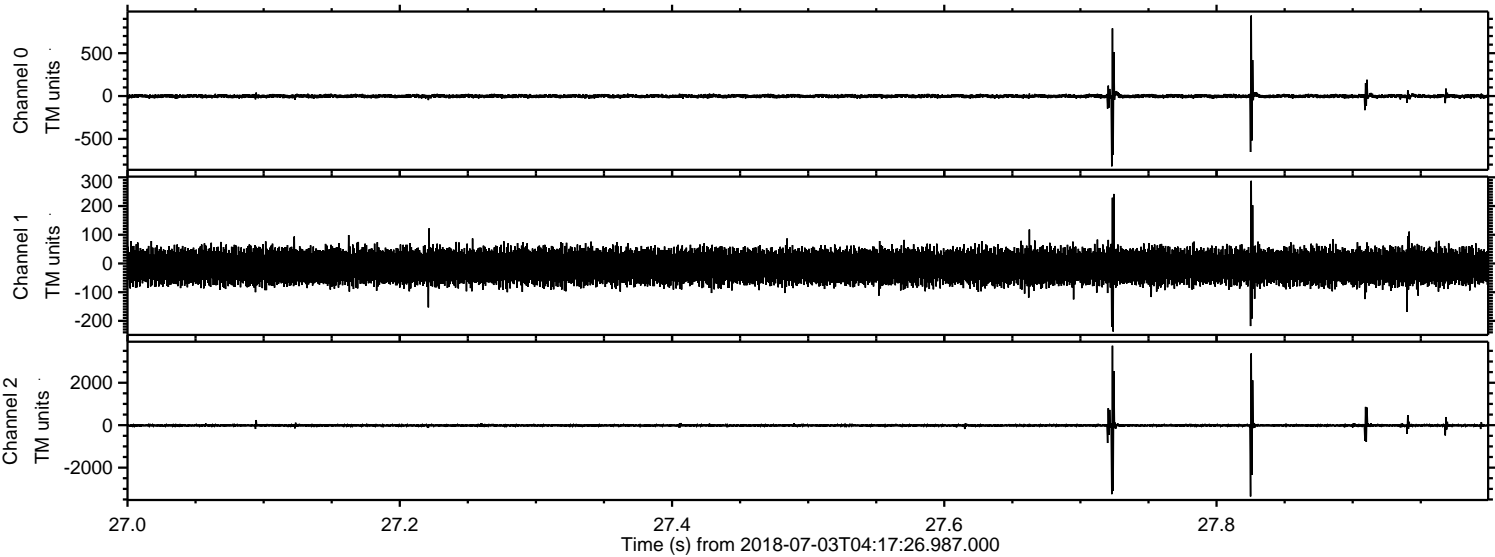


Channel 0
mn: -1885
mx: 621
 μ : -1.4
 σ : 21.2

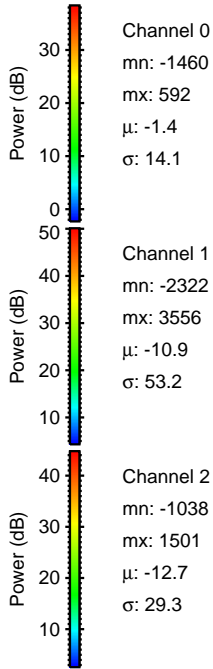
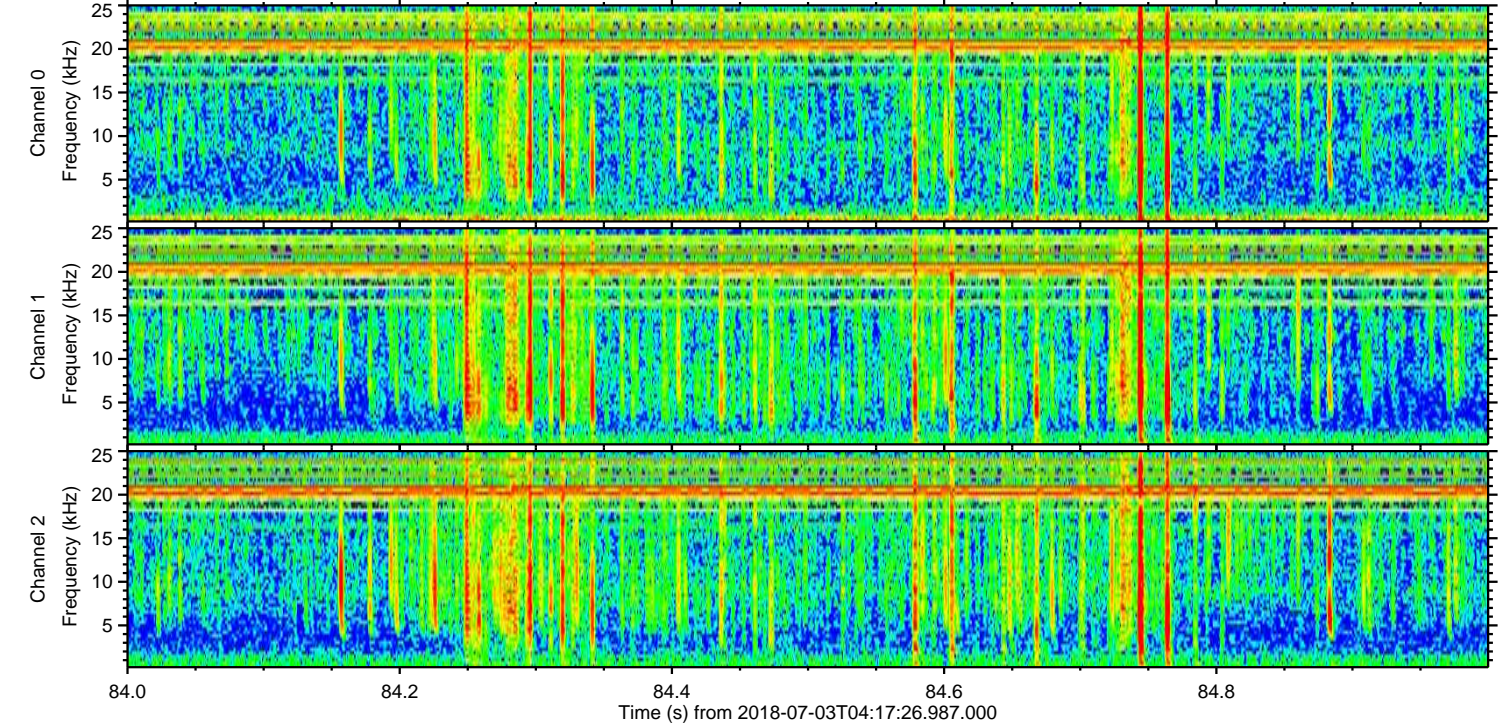
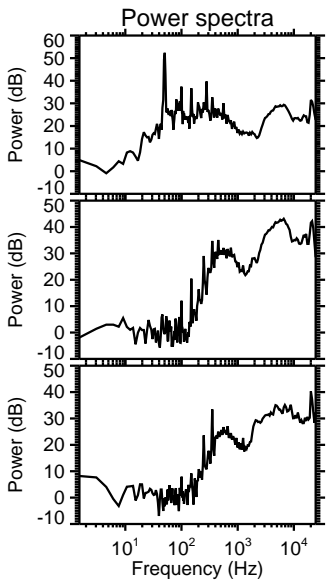
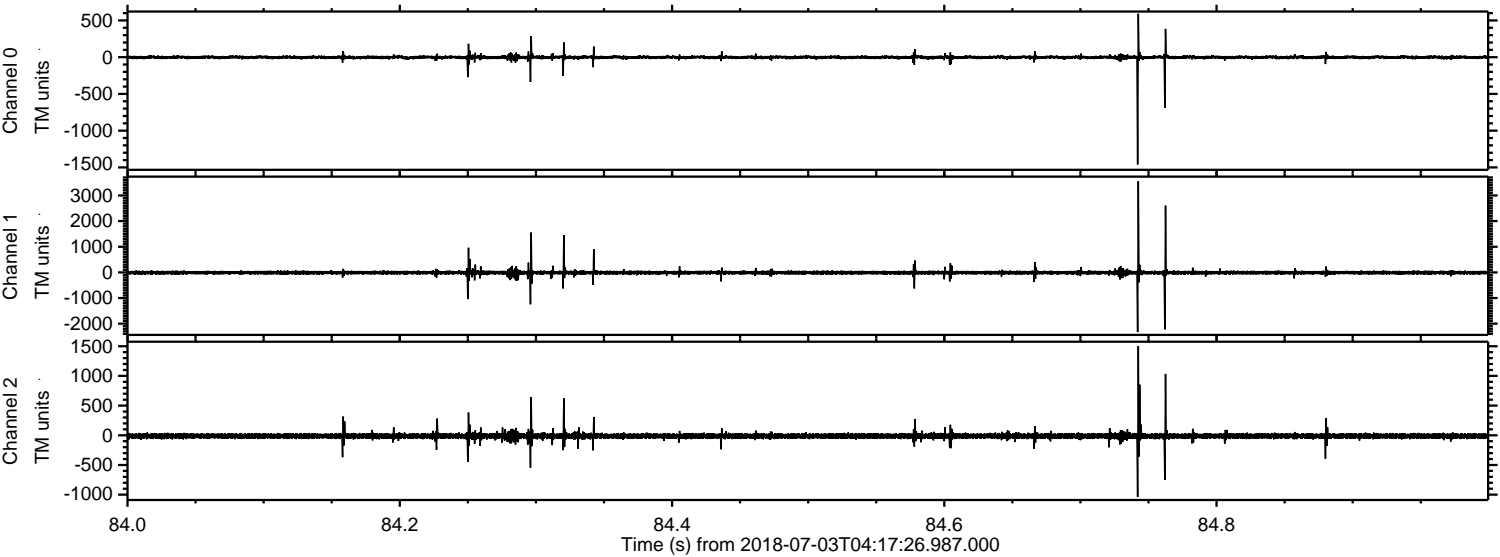
Channel 1
mn: -2989
mx: 4482
 μ : -10.9
 σ : 81.9

Channel 2
mn: -1374
mx: 2147
 μ : -12.7
 σ : 36.3

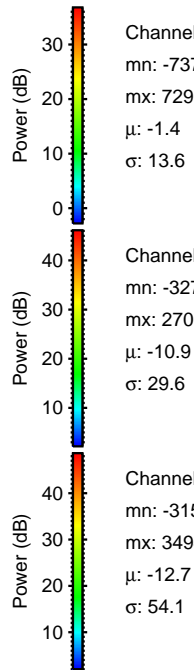
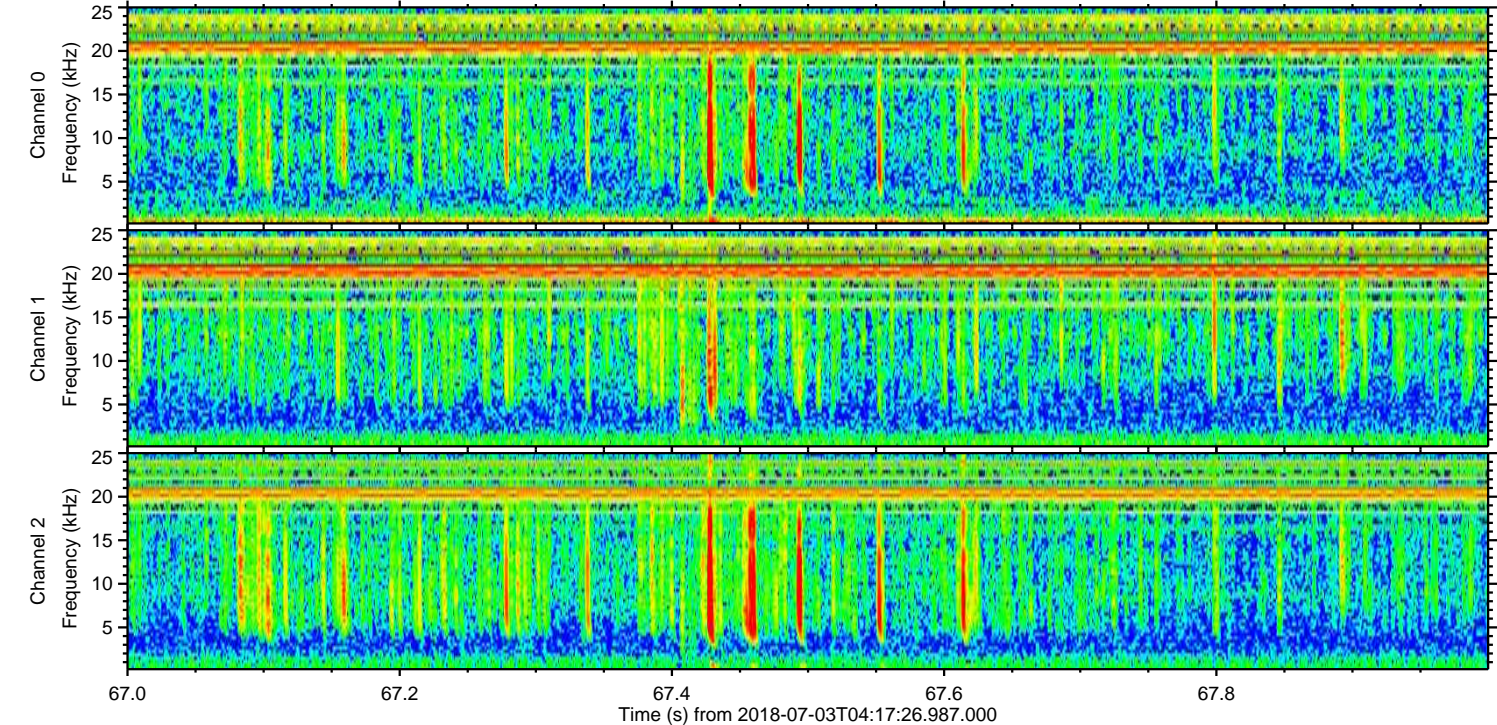
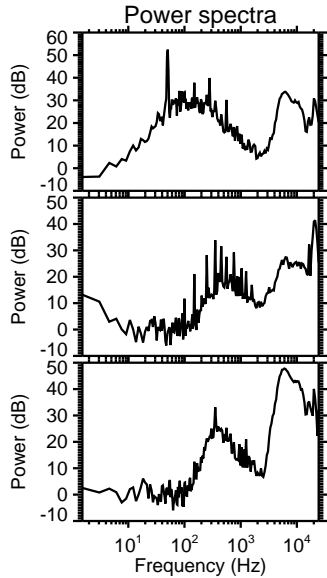
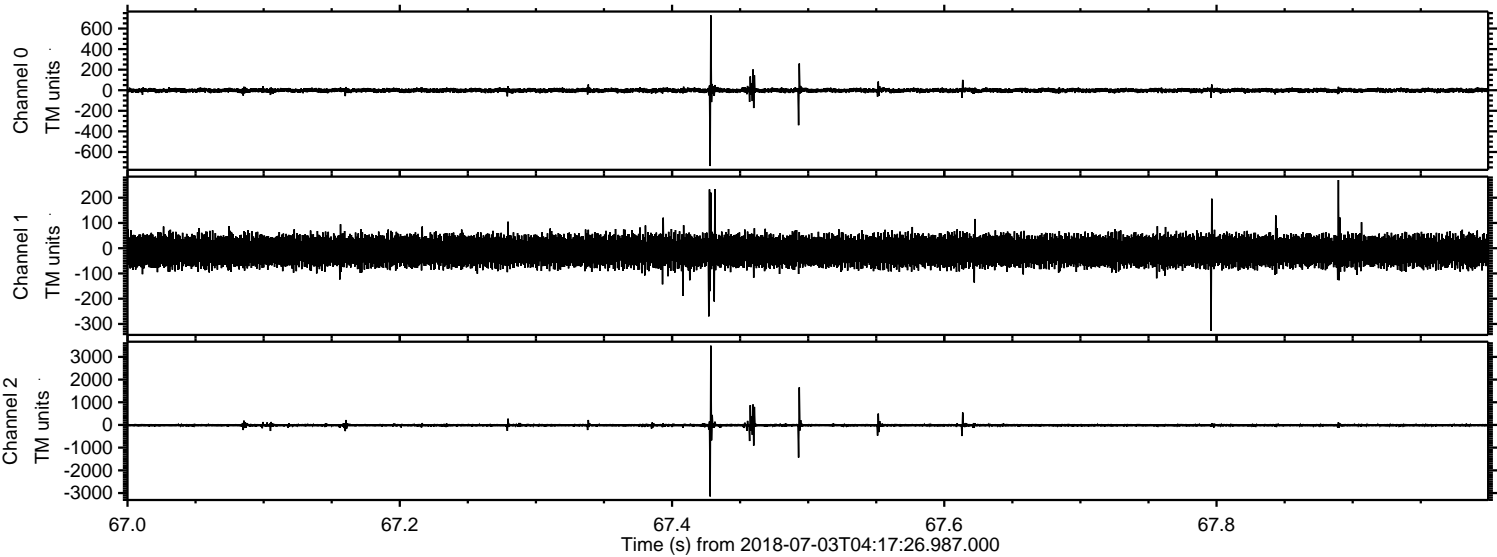
Processed Tue Jul 3 06:25:30 2018 by ELM ver.2012-10-06 from 001__elm20180703_041725__dat00.bin



Processed Tue Jul 3 06:25:31 2018 by ELM ver.2012-10-06 from 001__elm20180703_041725__dat00.bin



Processed Tue Jul 3 06:25:32 2018 by ELM ver.2012-10-06 from 001__elm20180703_041725__dat00.bin



Channel 0
mn: -737
mx: 729
 μ : -1.4
 σ : 13.6

Channel 1
mn: -327
mx: 270
 μ : -10.9
 σ : 29.6

Channel 2
mn: -3150
mx: 3494
 μ : -12.7
 σ : 54.1

Processed Tue Jul 3 06:25:32 2018 by ELM ver.2012-10-06 from 001__elm20180703_041725__dat00.bin

