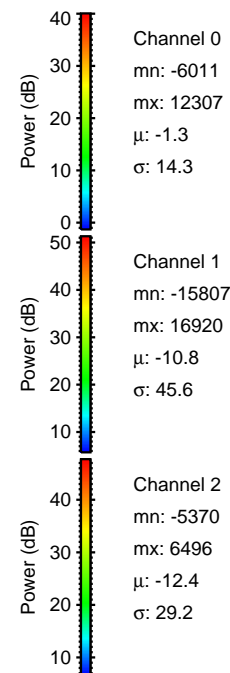
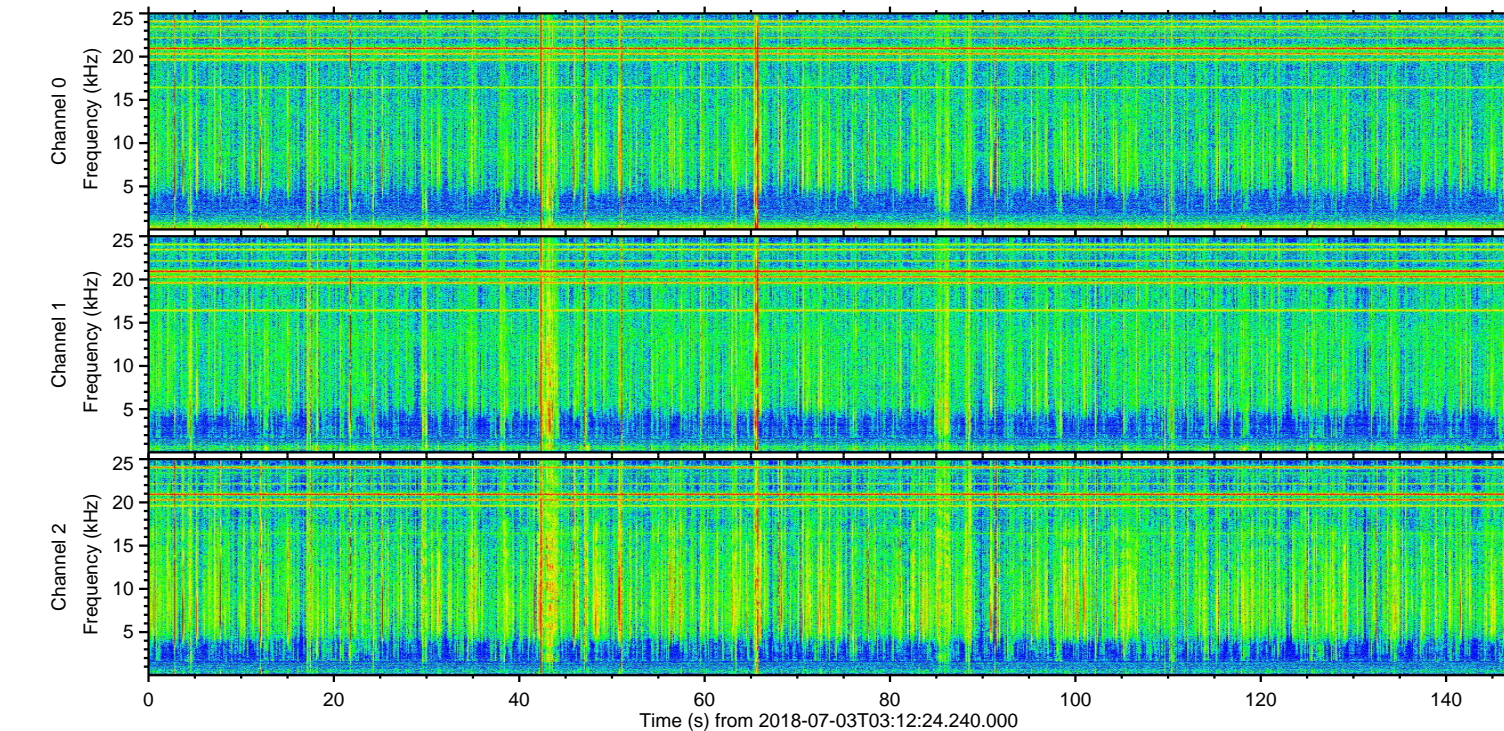
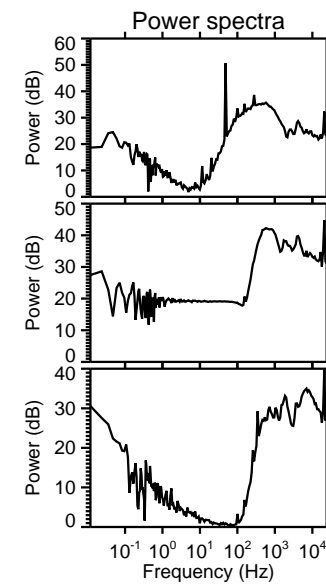
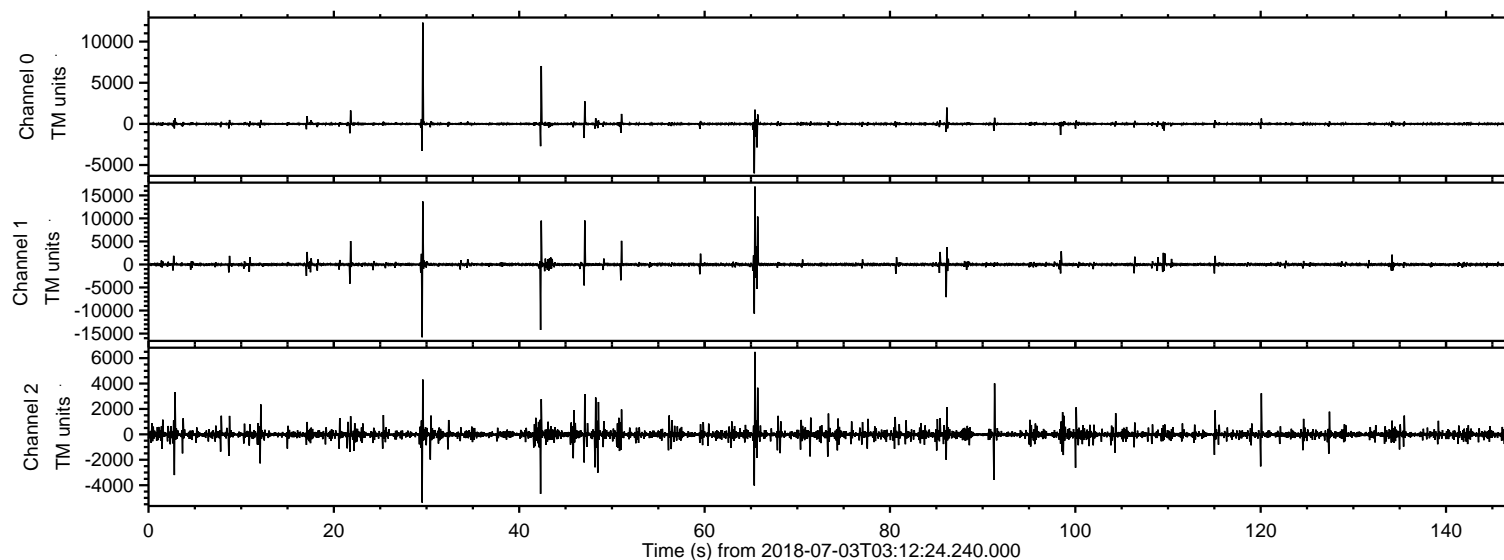
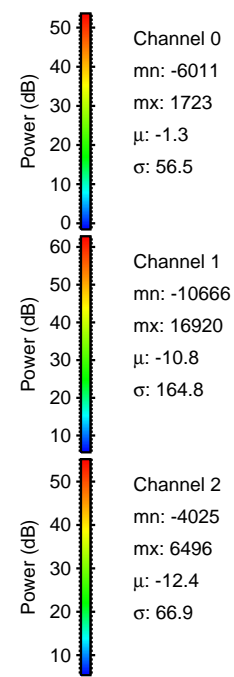
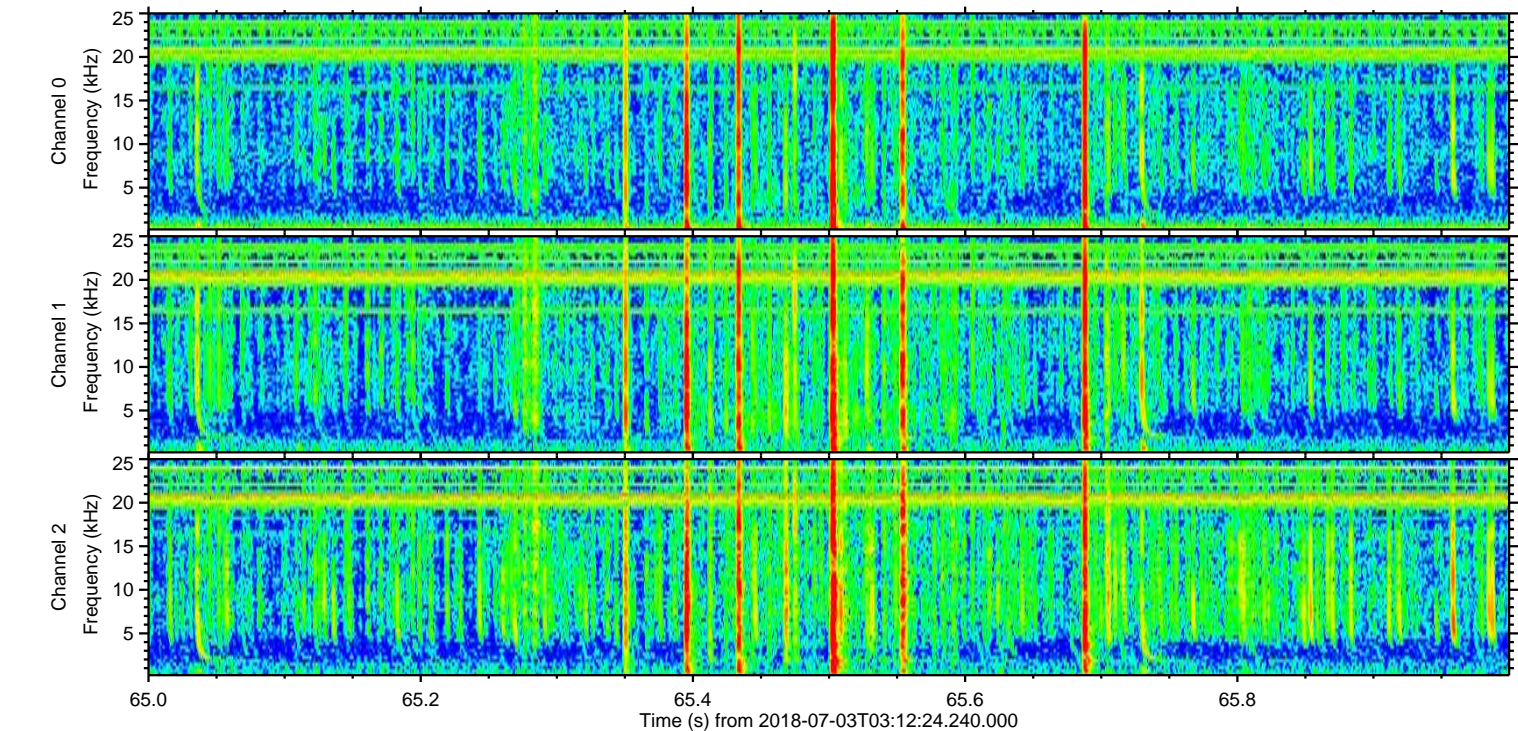
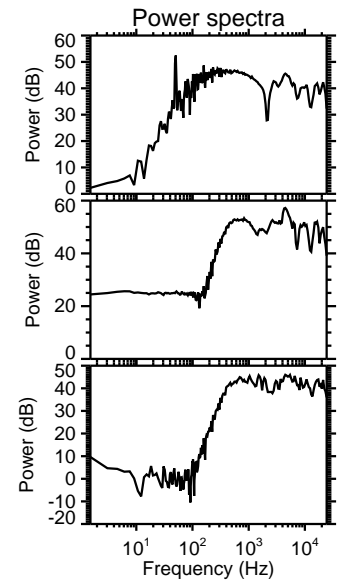
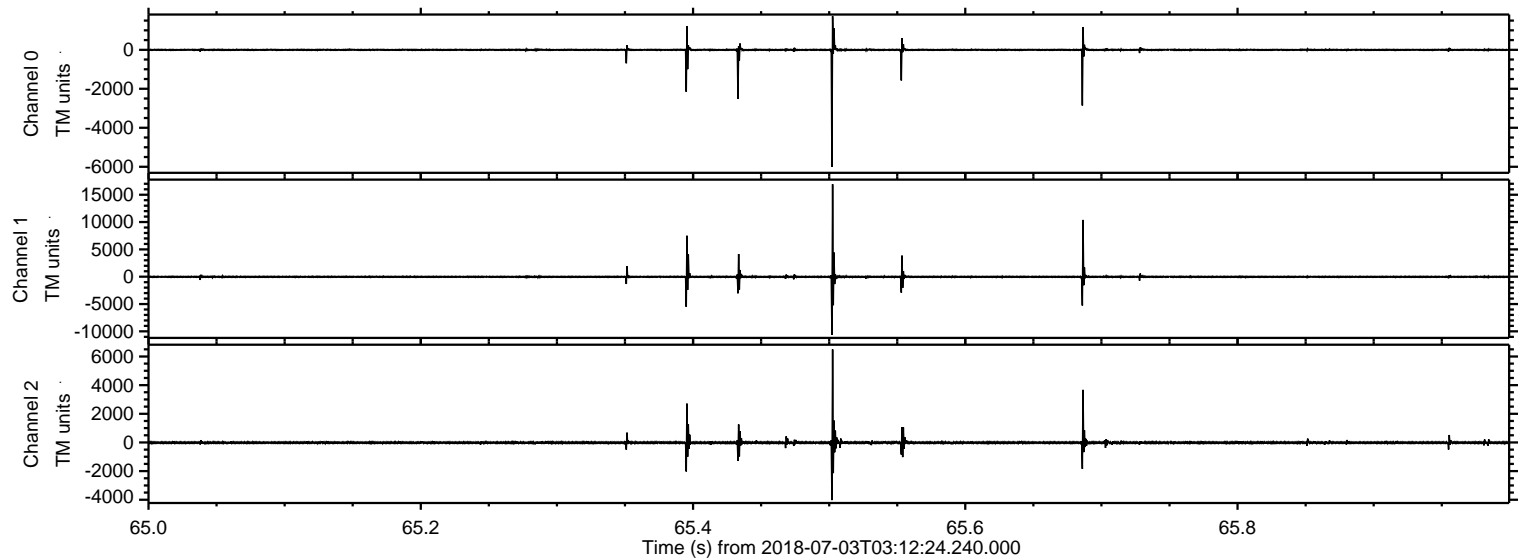


ELMAVAN 3D WAVEFORMS (Measured data sampled at 50 kHz) 51000 packets of 144 samples from 2018-07-03T03:12:24.240.000.

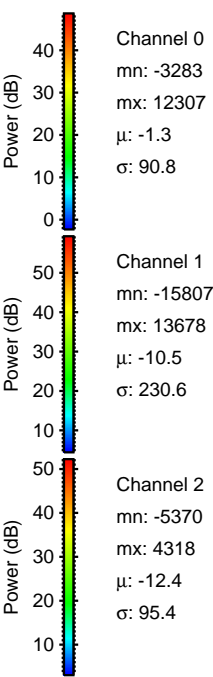
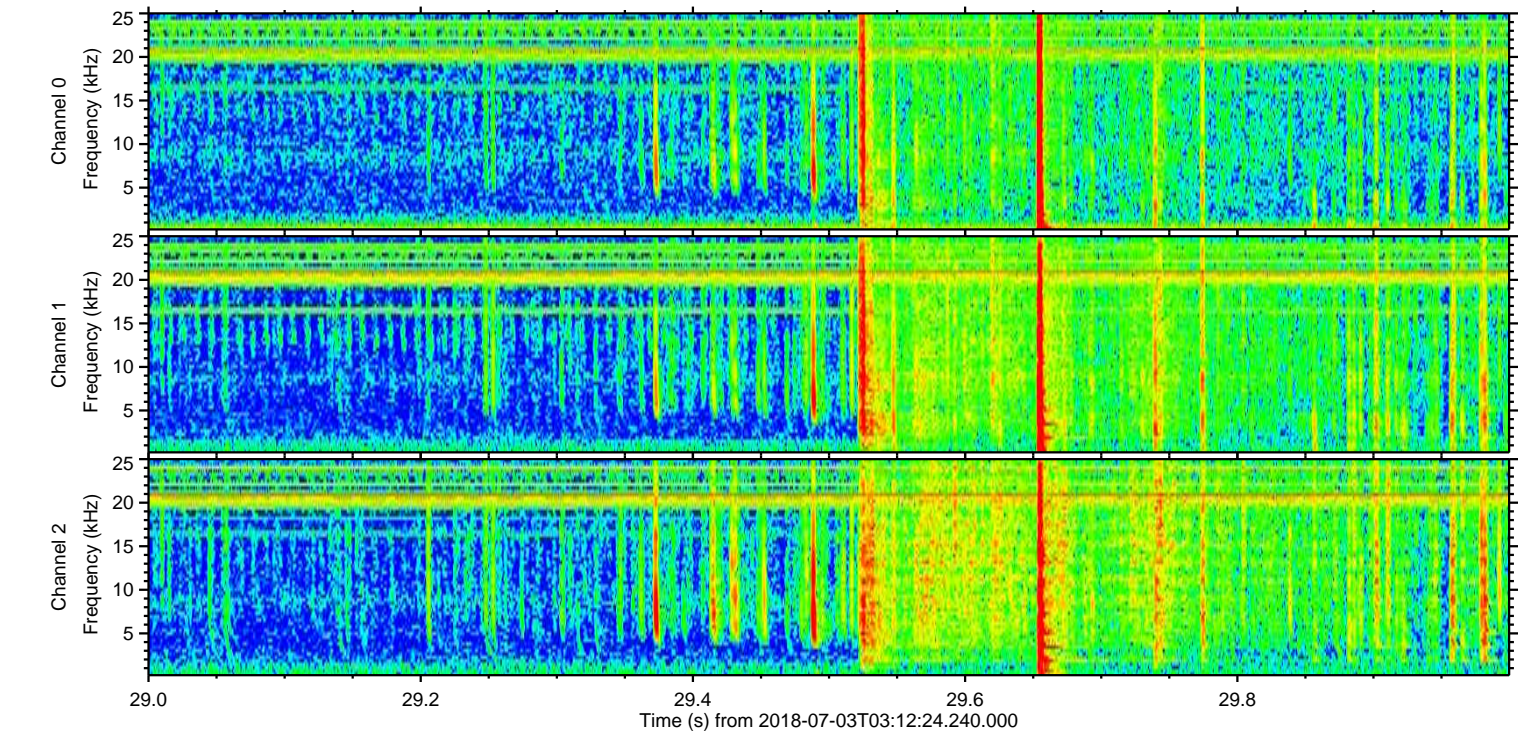
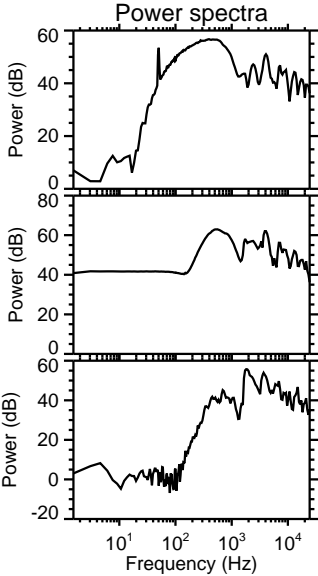
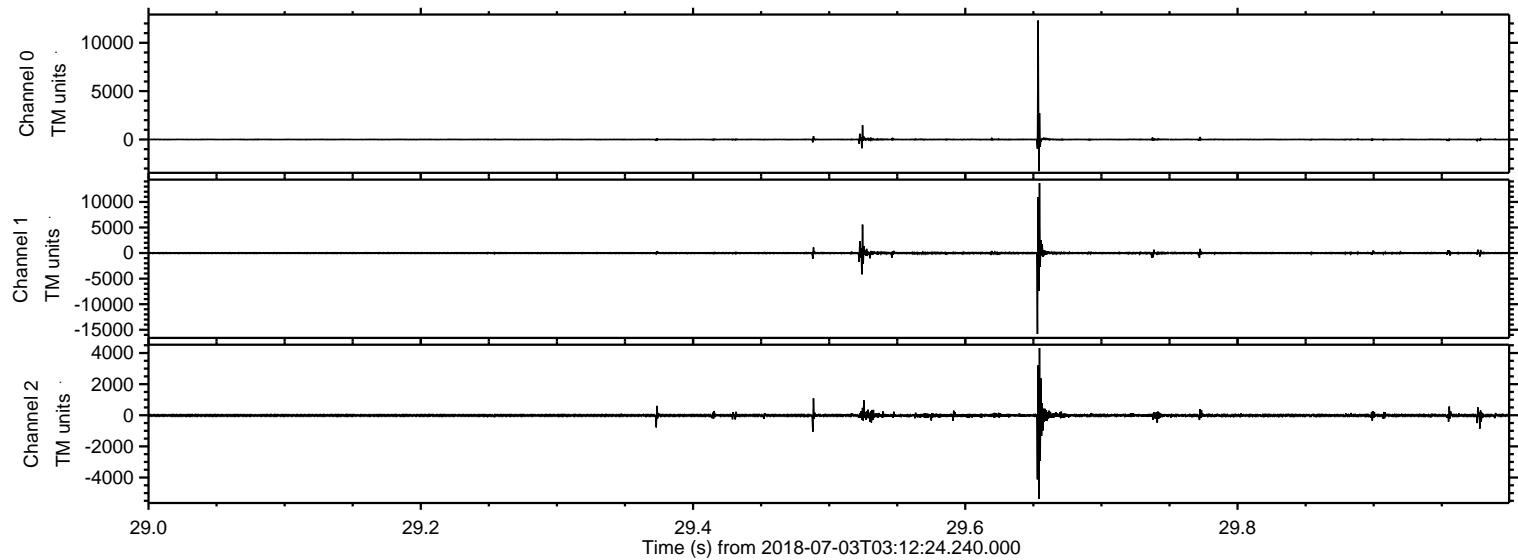
Processed Tue Jul 3 05:19:57 2018 by ELM ver.2012-10-06 from 001__elm20180703_031223__dat00.bin



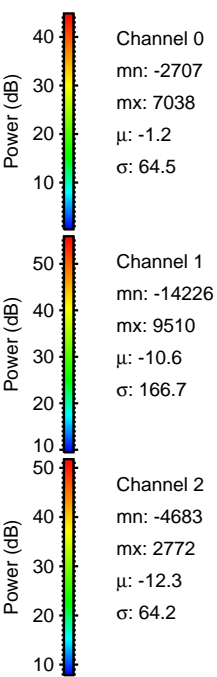
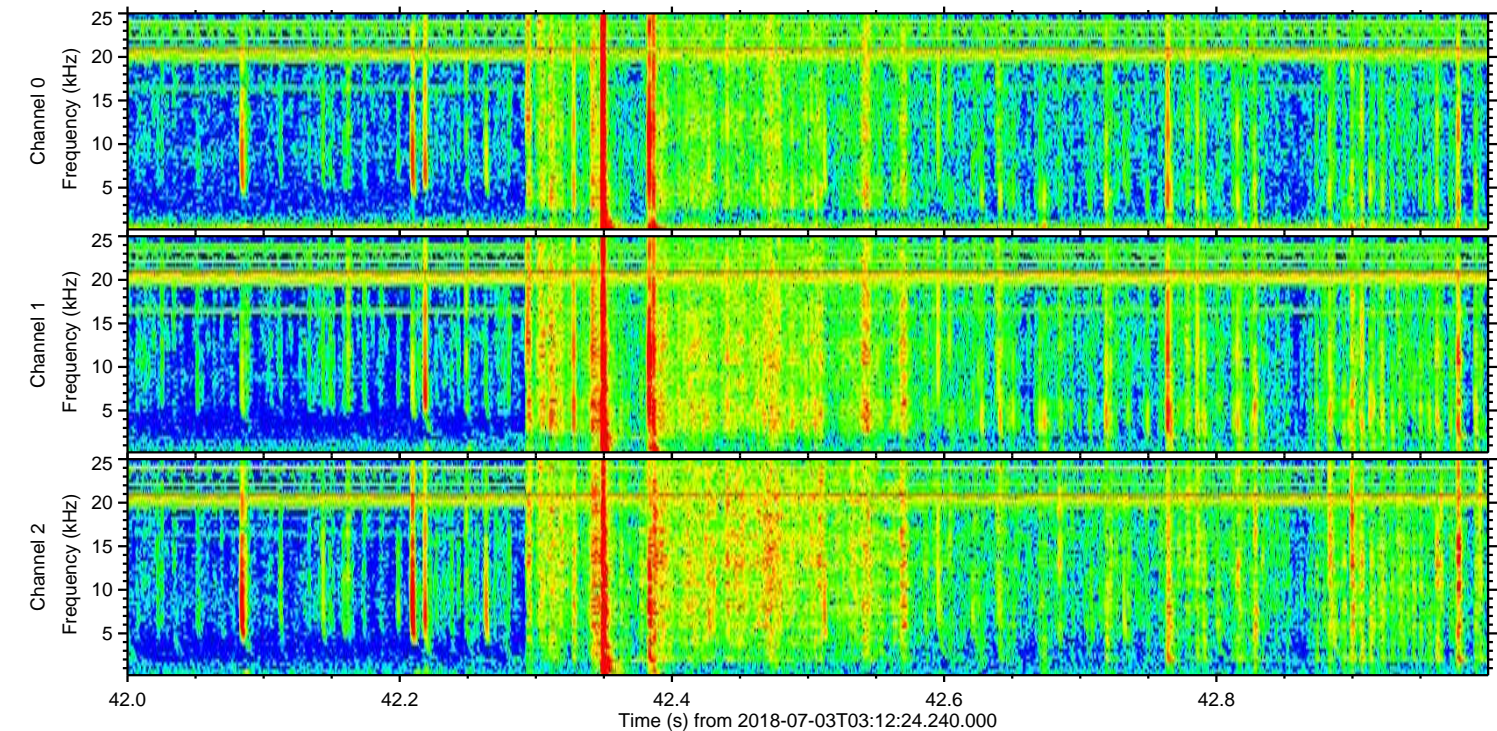
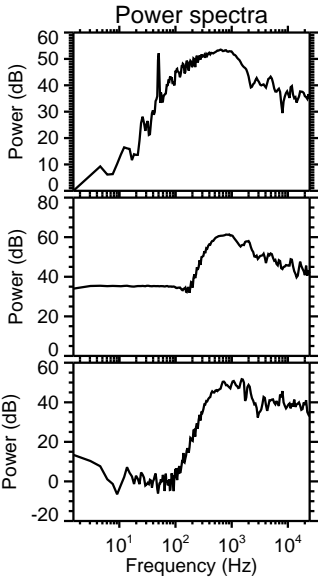
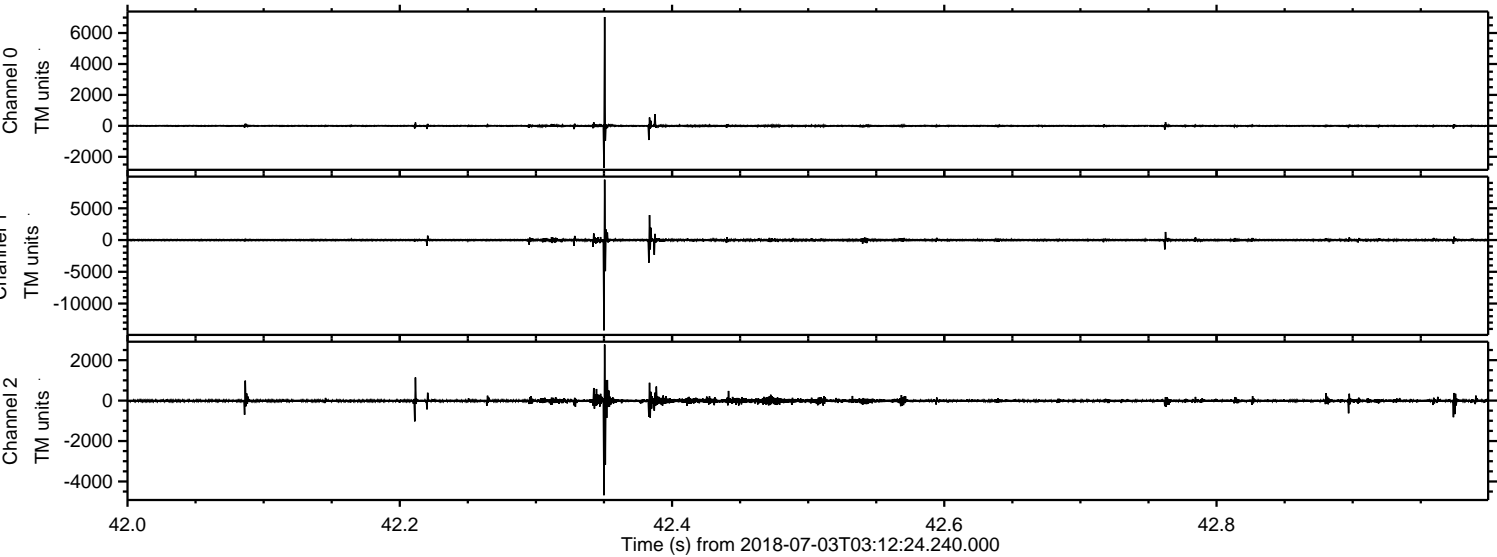
Processed Tue Jul 3 05:20:03 2018 by ELM ver.2012-10-06 from 001__elm20180703_031223__dat00.bin



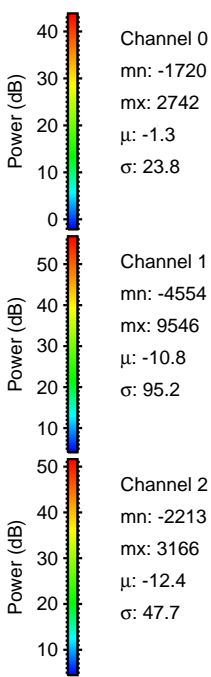
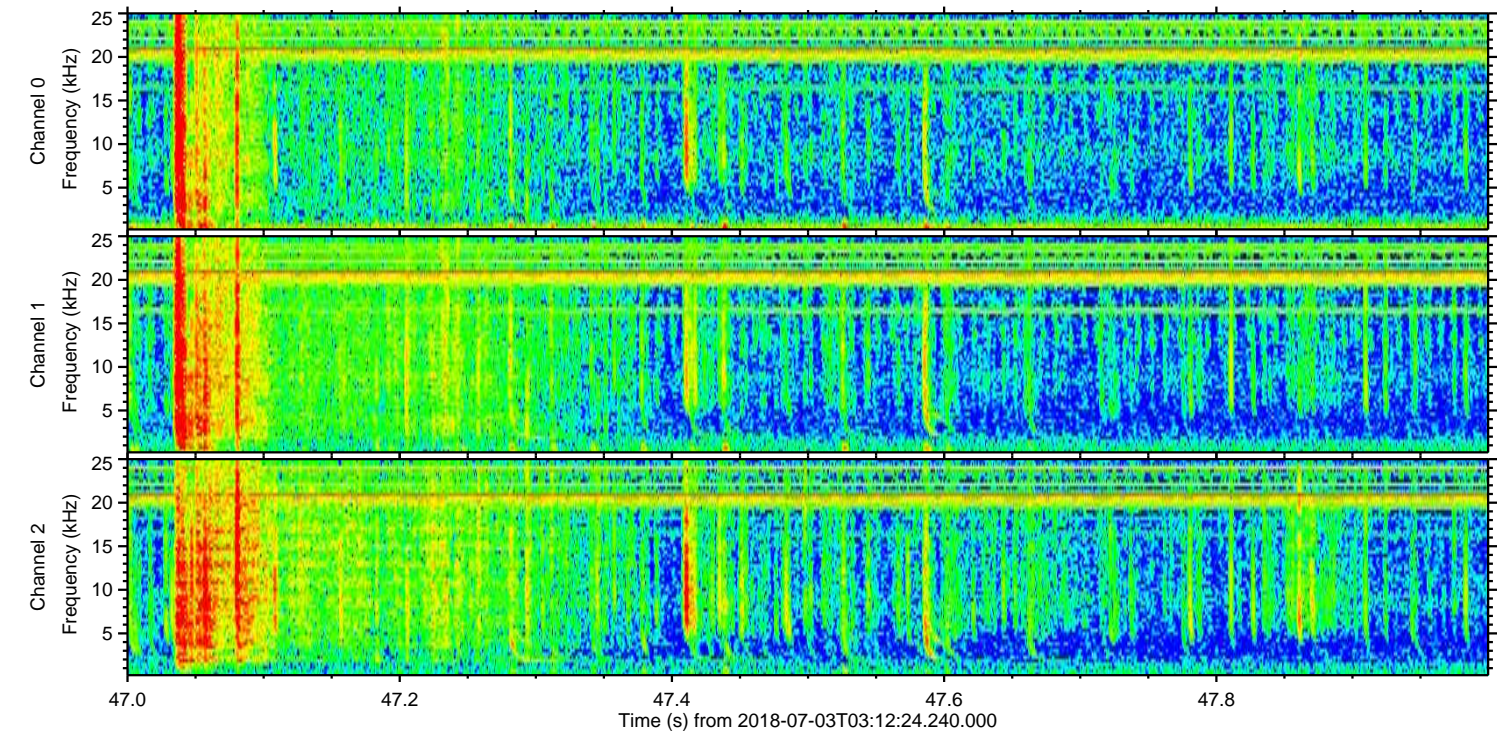
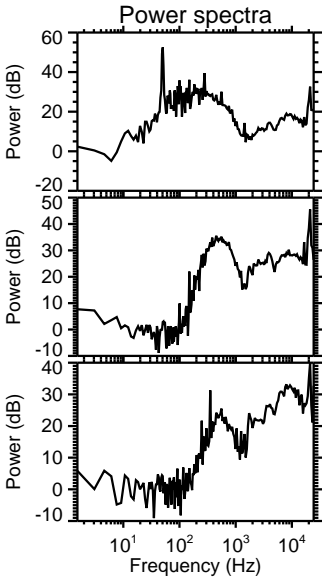
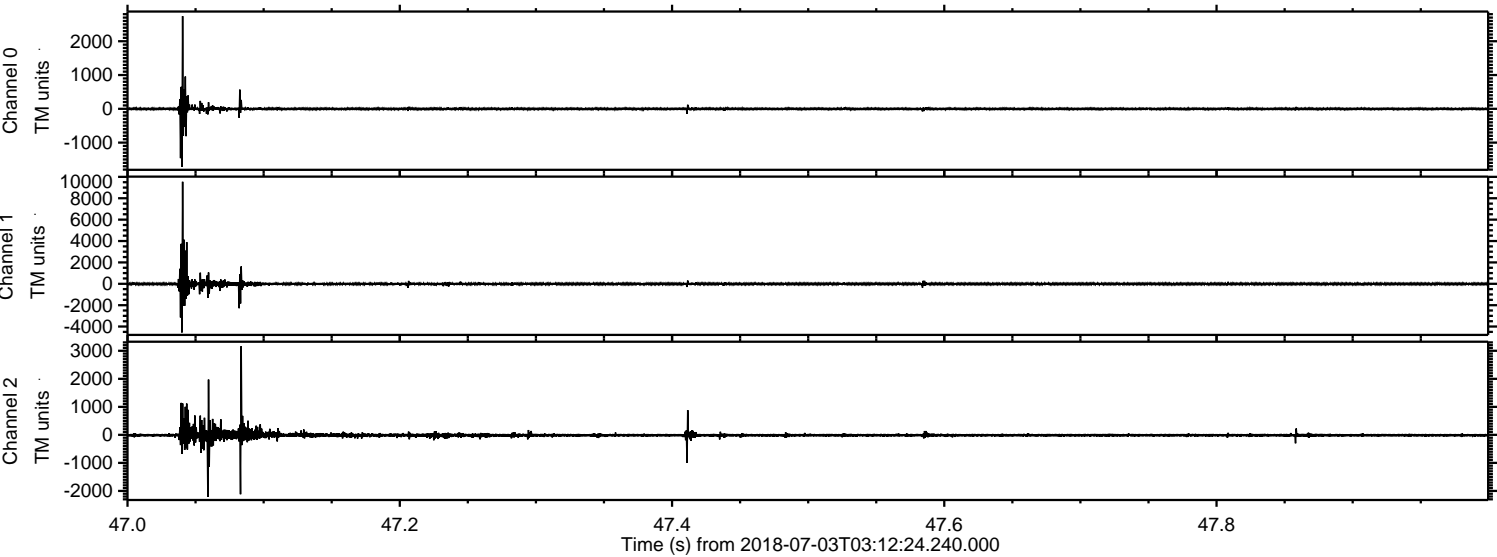
Processed Tue Jul 3 05:20:03 2018 by ELM ver.2012-10-06 from 001__elm20180703_031223__dat00.bin



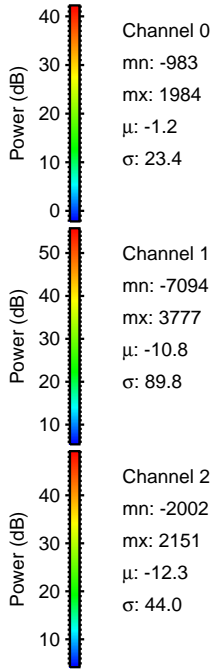
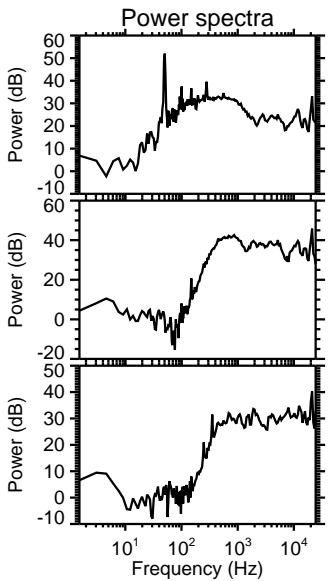
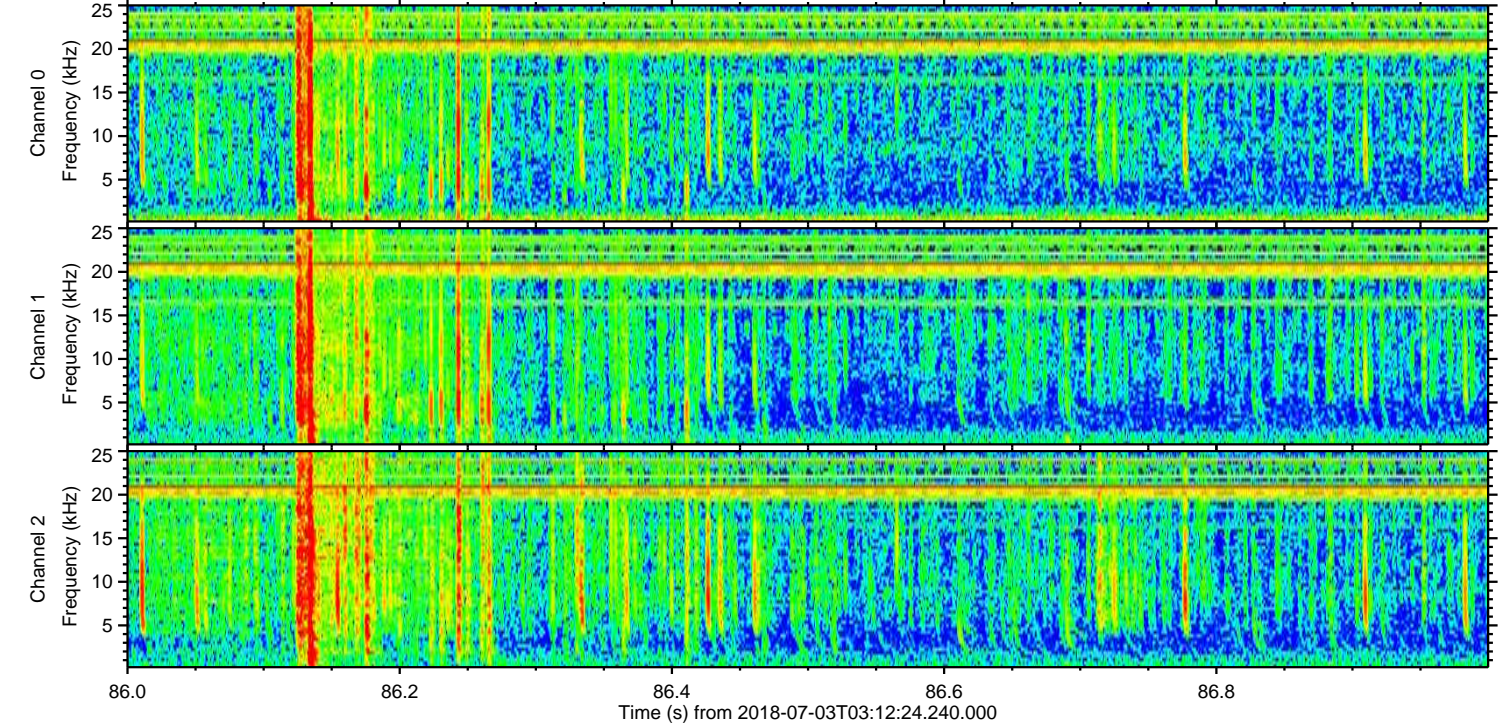
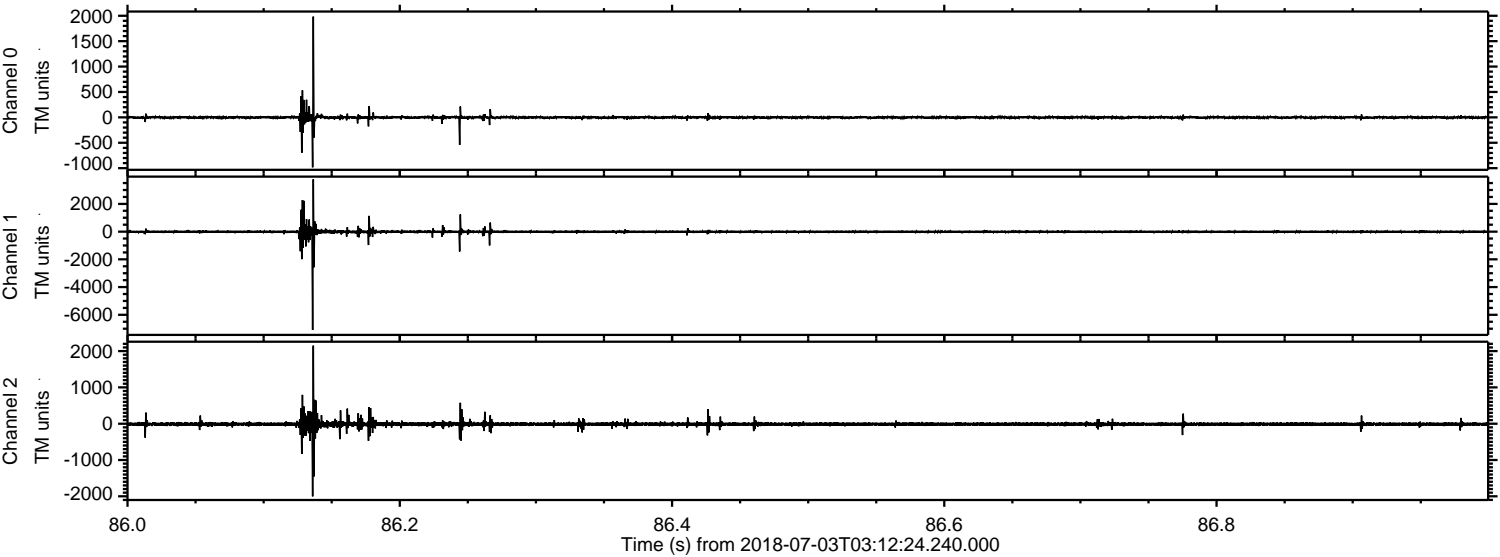
Processed Tue Jul 3 05:20:04 2018 by ELM ver.2012-10-06 from 001__elm20180703_031223__dat00.bin



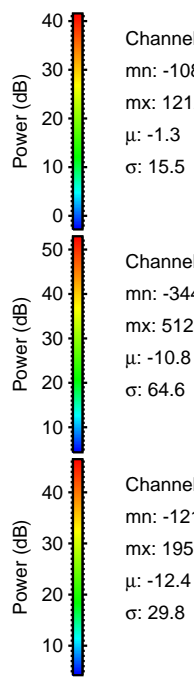
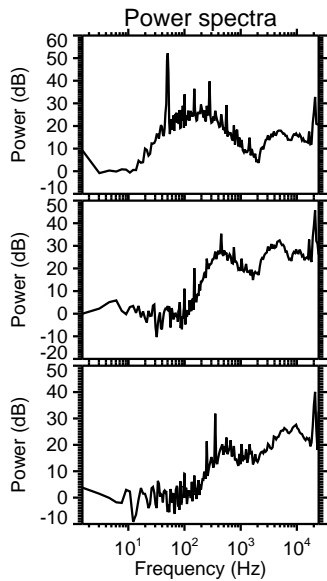
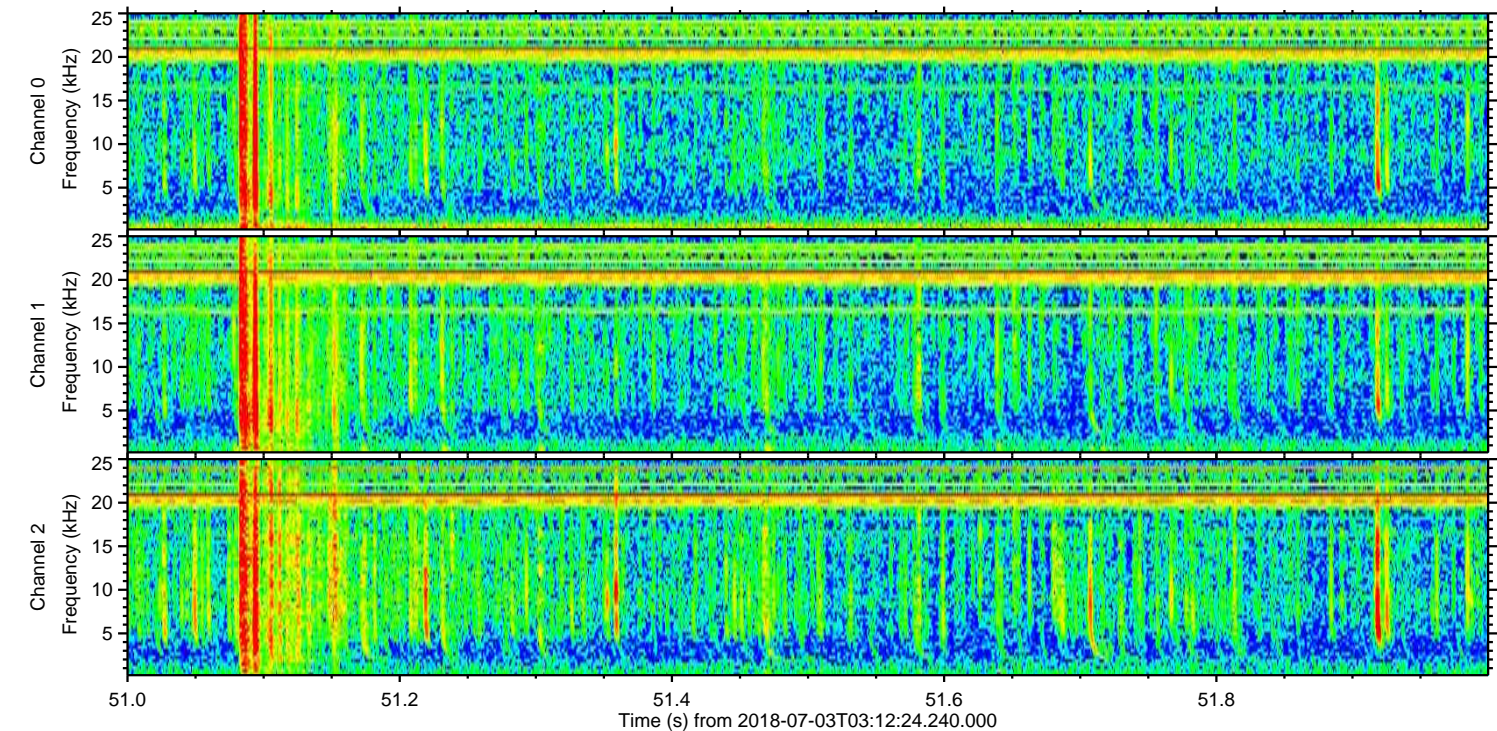
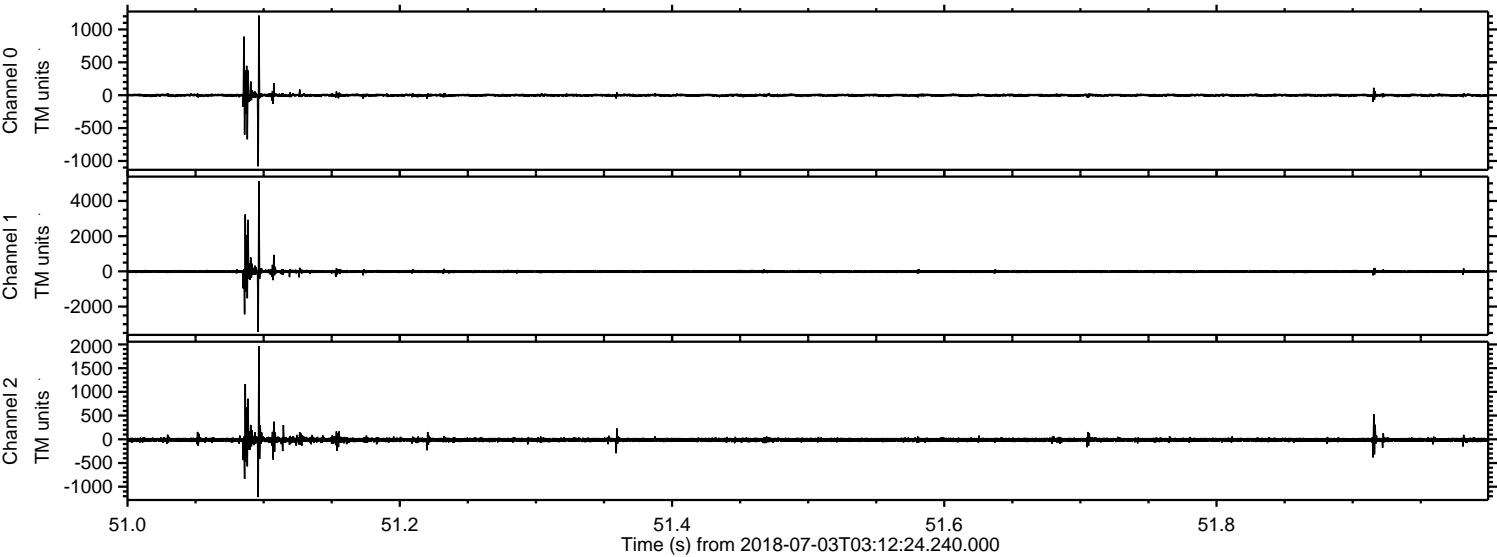
Processed Tue Jul 3 05:20:05 2018 by ELM ver.2012-10-06 from 001__elm20180703_031223__dat00.bin



Processed Tue Jul 3 05:20:05 2018 by ELM ver.2012-10-06 from 001__elm20180703_031223__dat00.bin



Processed Tue Jul 3 05:20:06 2018 by ELM ver.2012-10-06 from 001__elm20180703_031223__dat00.bin

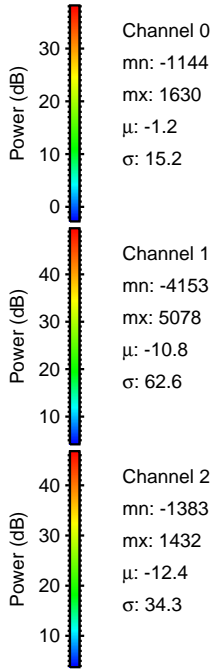
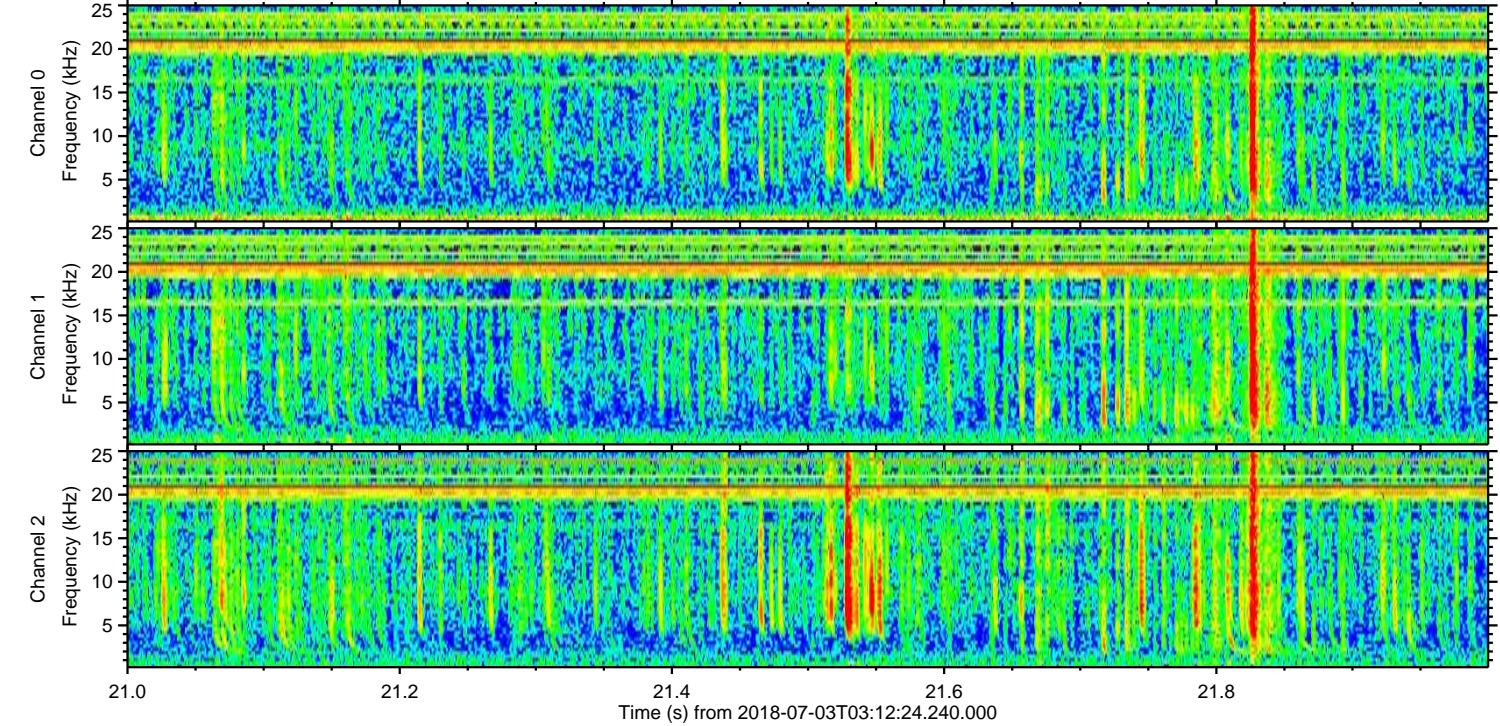
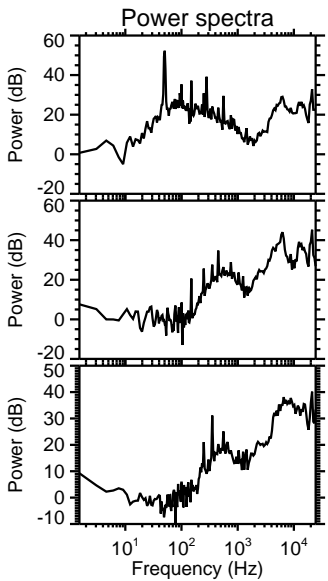
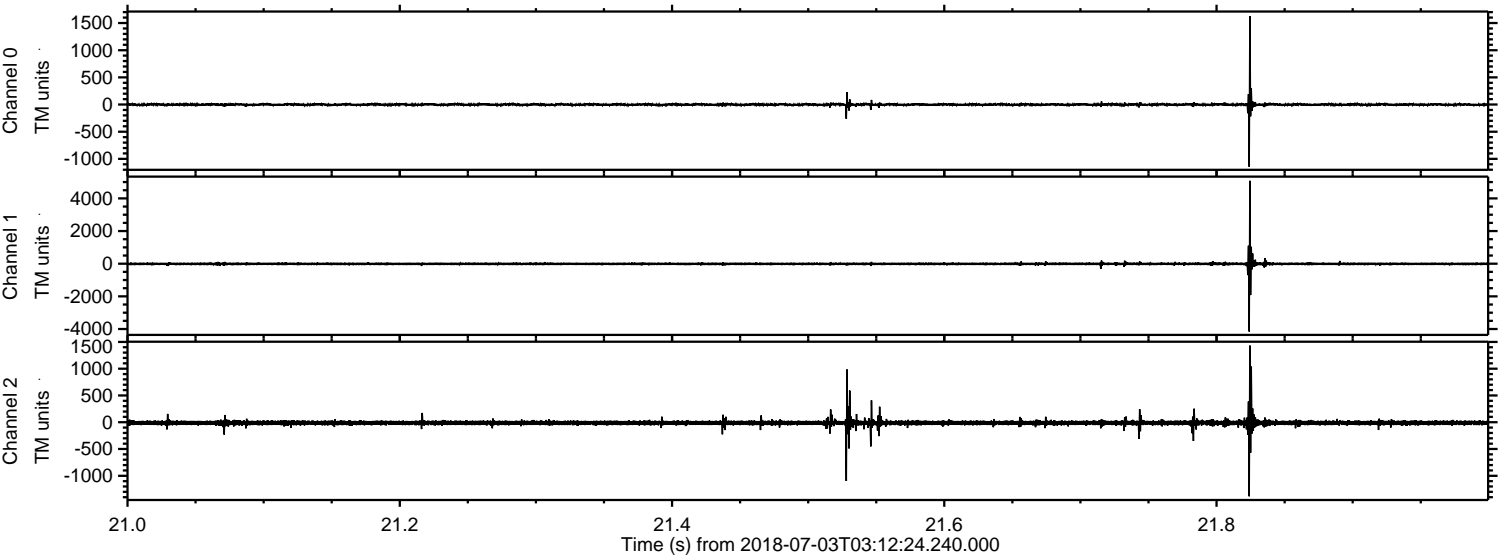


Channel 0
mn: -1081
mx: 1212
 μ : -1.3
 σ : 15.5

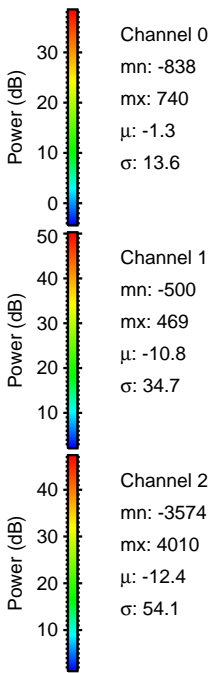
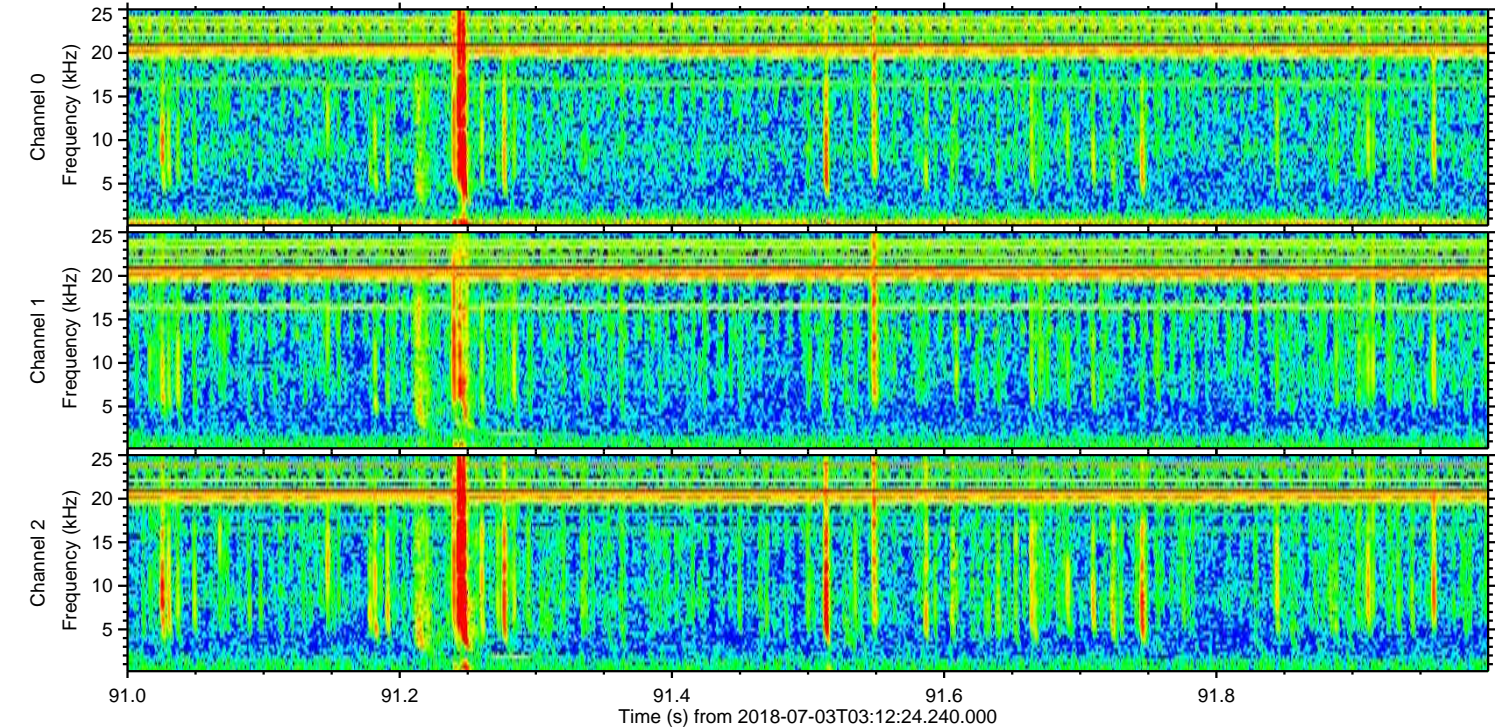
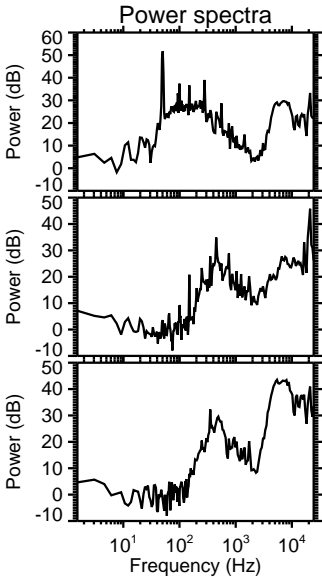
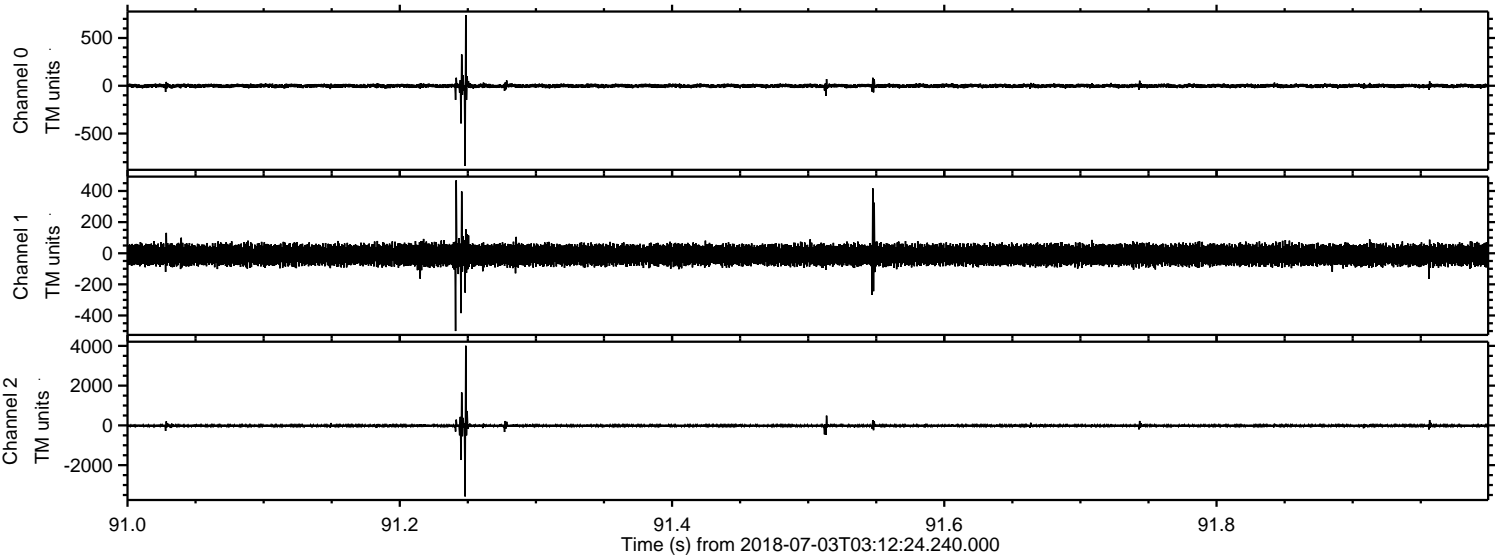
Channel 1
mn: -3440
mx: 5128
 μ : -10.8
 σ : 64.6

Channel 2
mn: -1219
mx: 1959
 μ : -12.4
 σ : 29.8

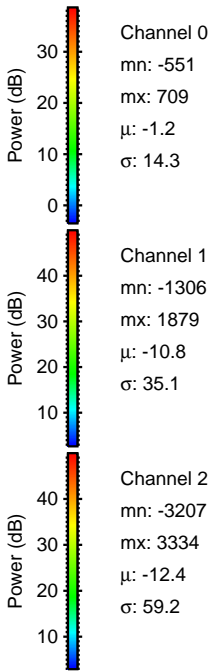
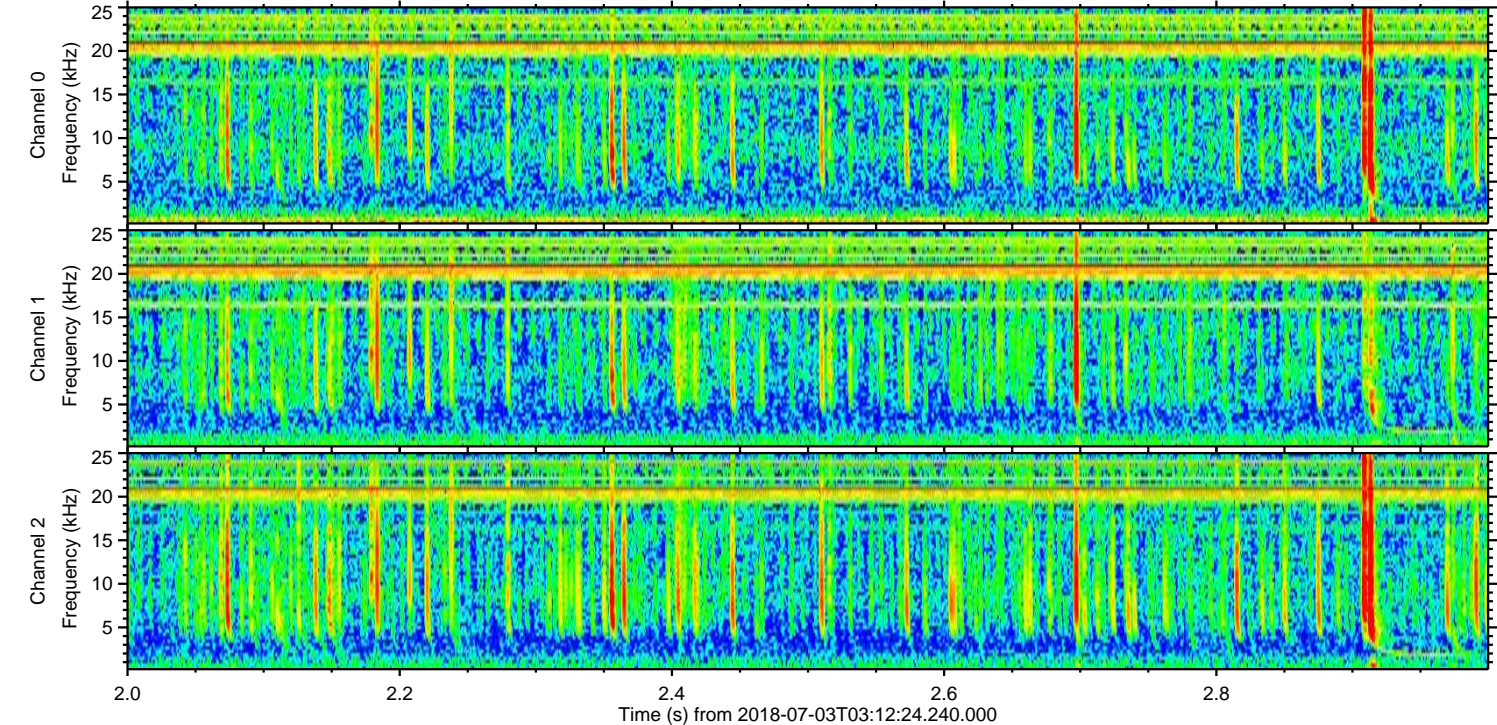
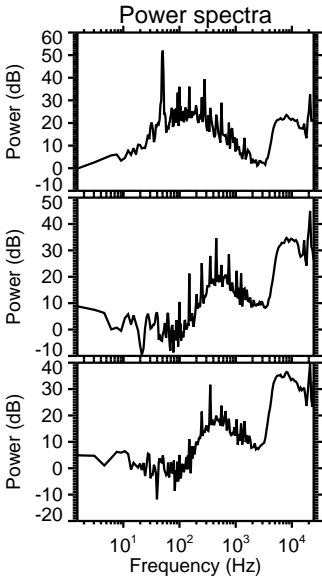
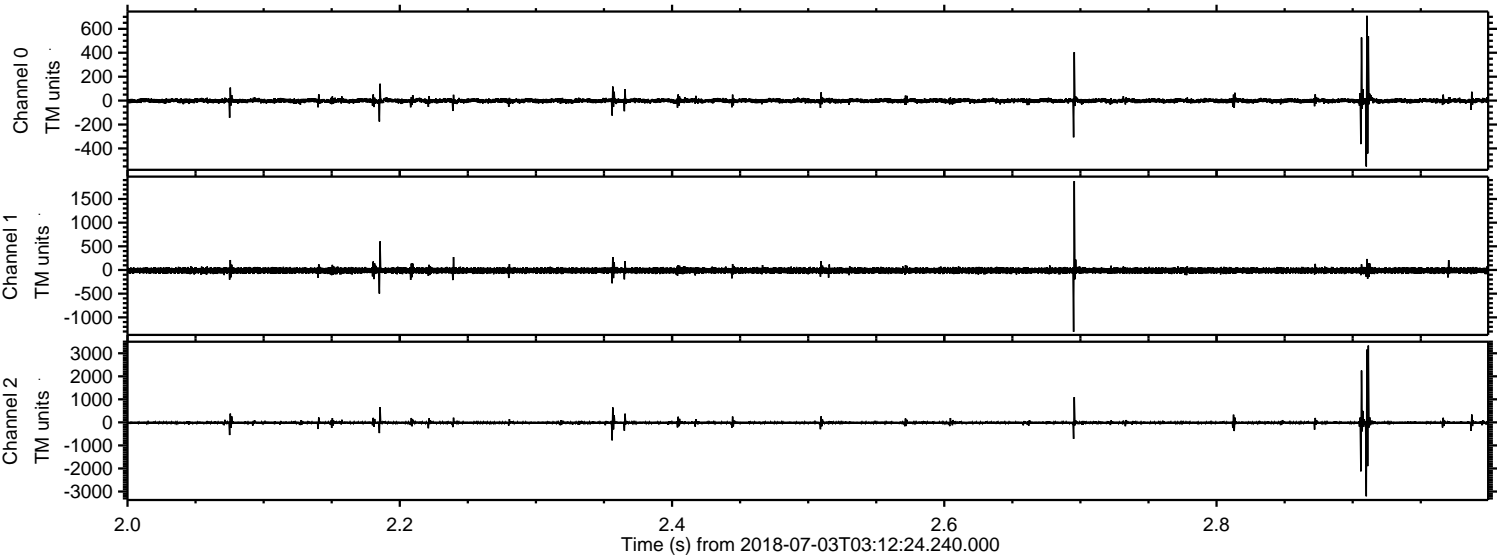
Processed Tue Jul 3 05:20:06 2018 by ELM ver.2012-10-06 from 001__elm20180703_031223__dat00.bin



Processed Tue Jul 3 05:20:07 2018 by ELM ver.2012-10-06 from 001__elm20180703_031223__dat00.bin



Processed Tue Jul 3 05:20:08 2018 by ELM ver.2012-10-06 from 001__elm20180703_031223__dat00.bin



ELMAVAN 3D WAVEFORMS (Measured data sampled at 50 kHz) 51000 packets of 144 samples from 2018-07-03T03:12:24.240.000. Part 115/147

