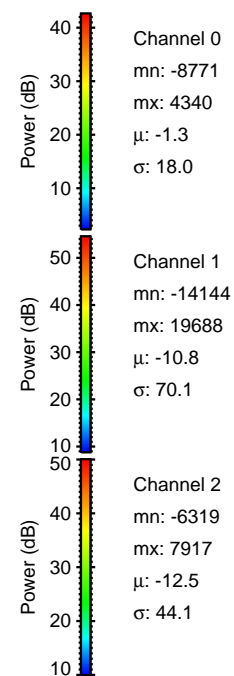
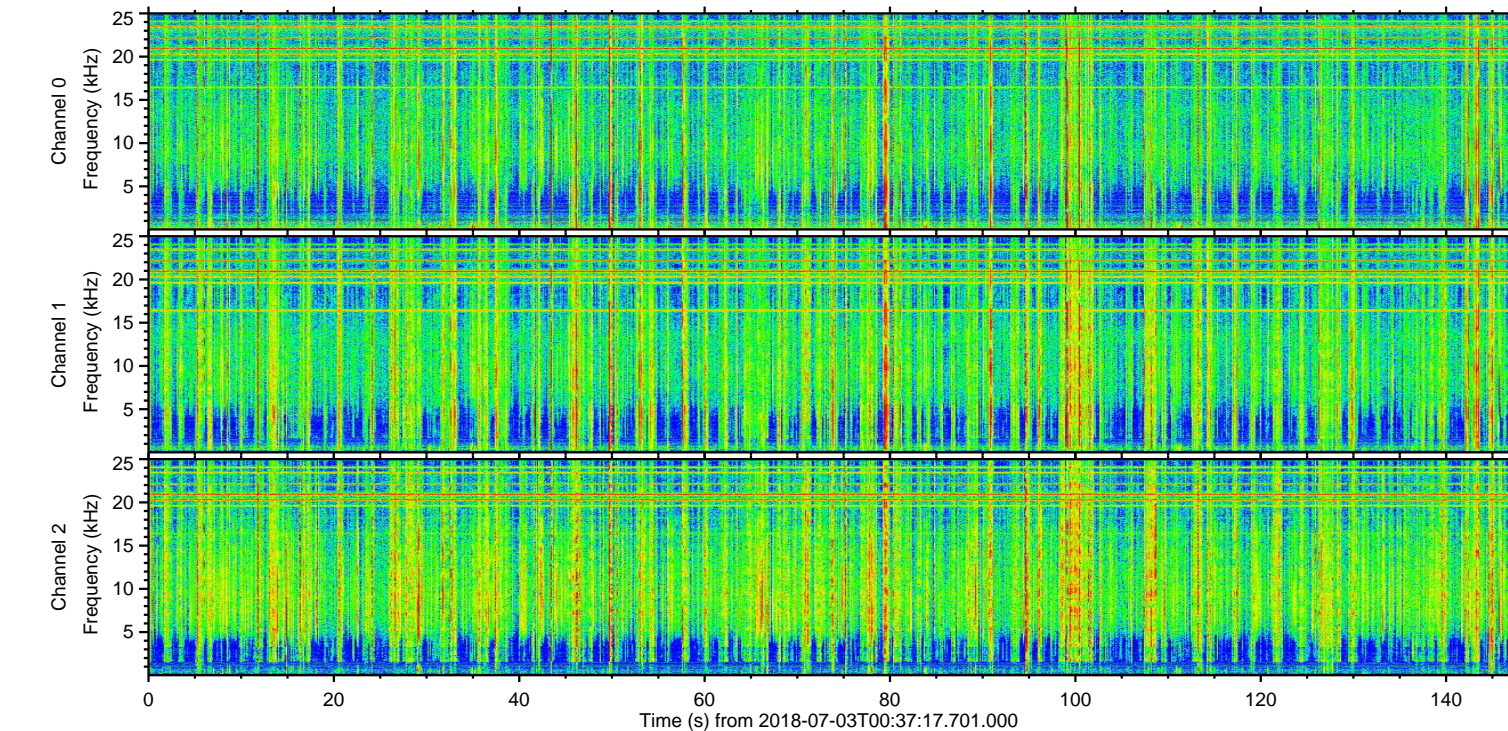
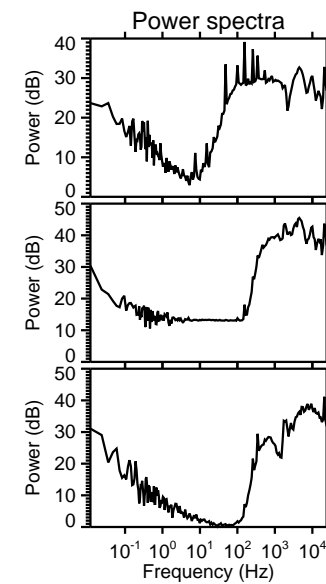
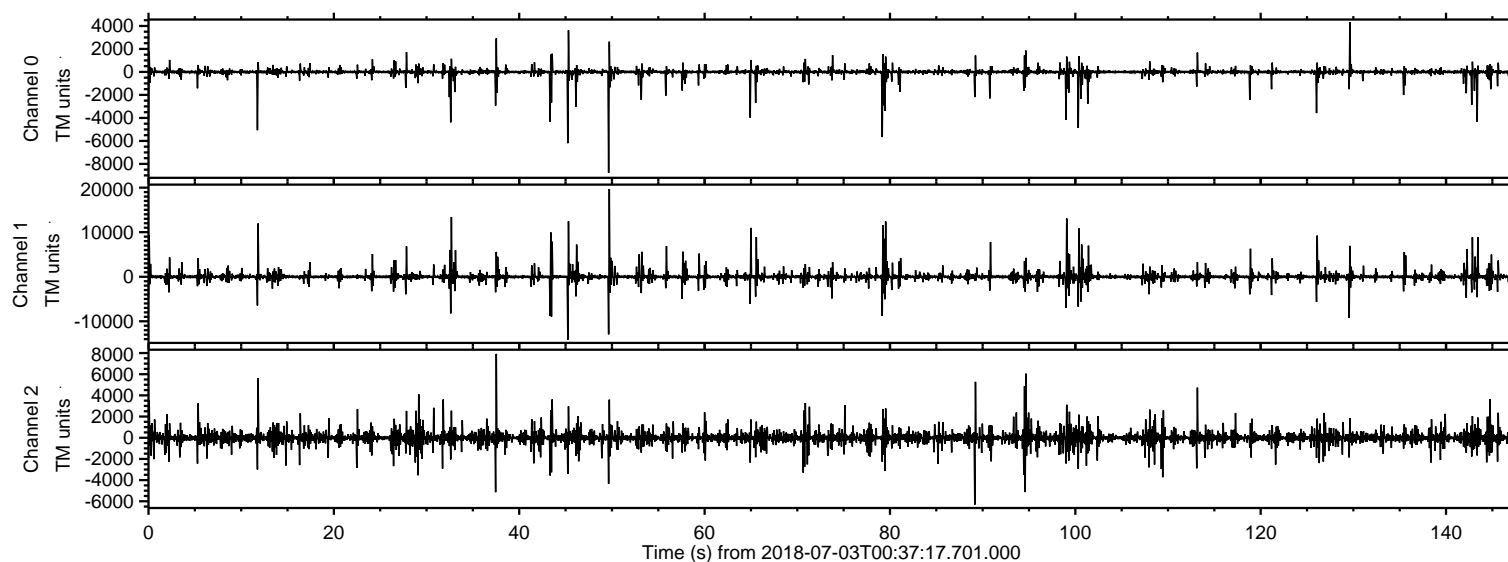


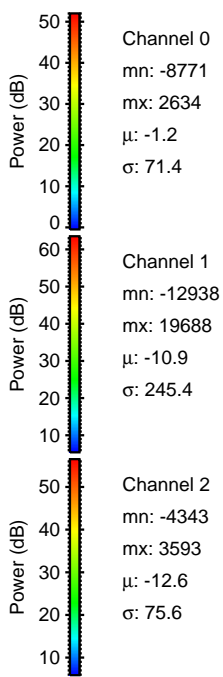
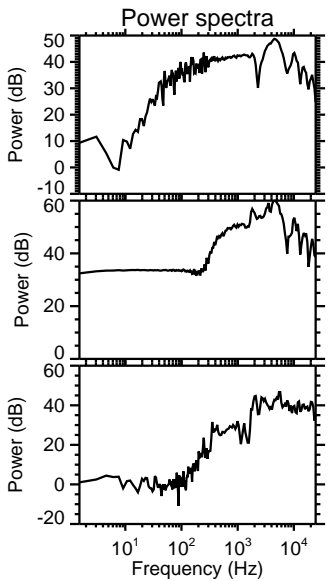
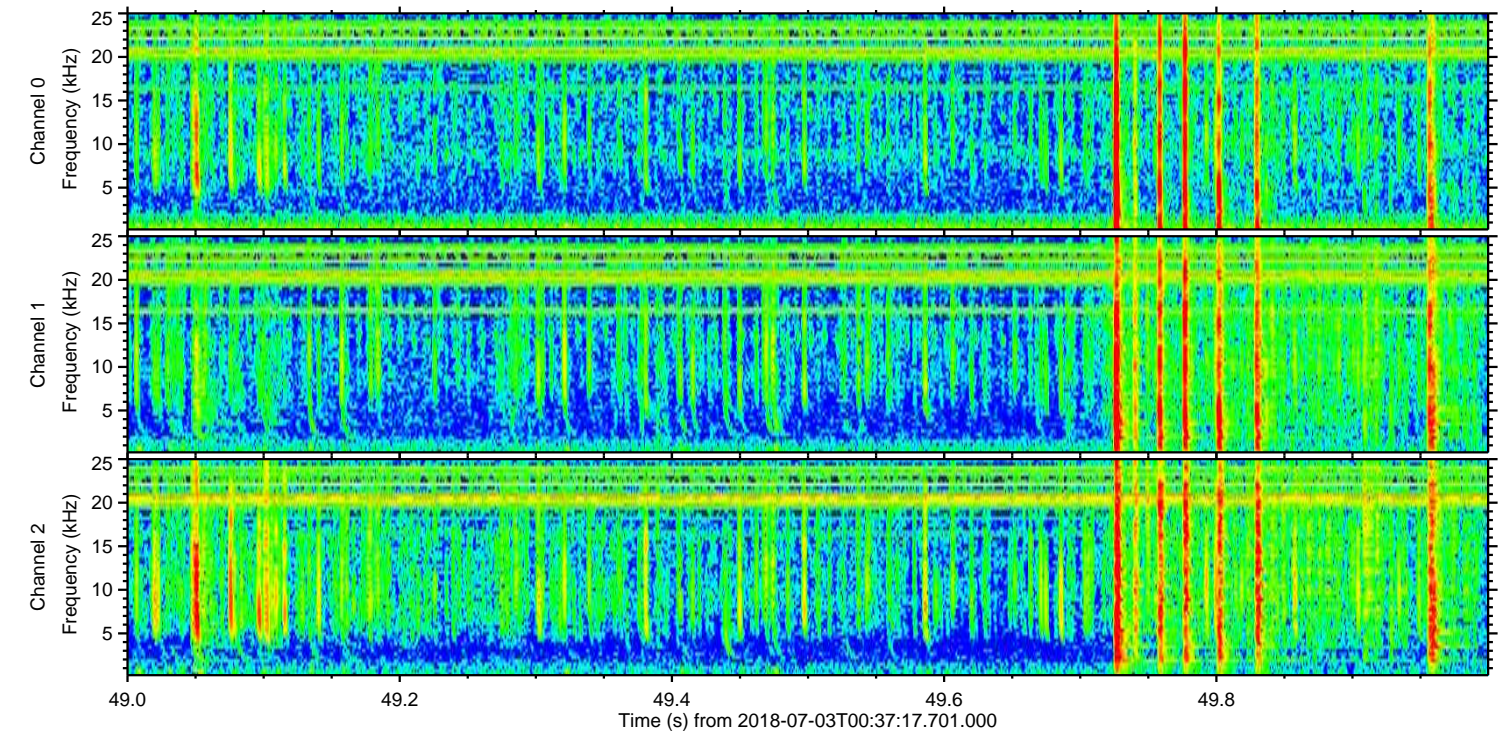
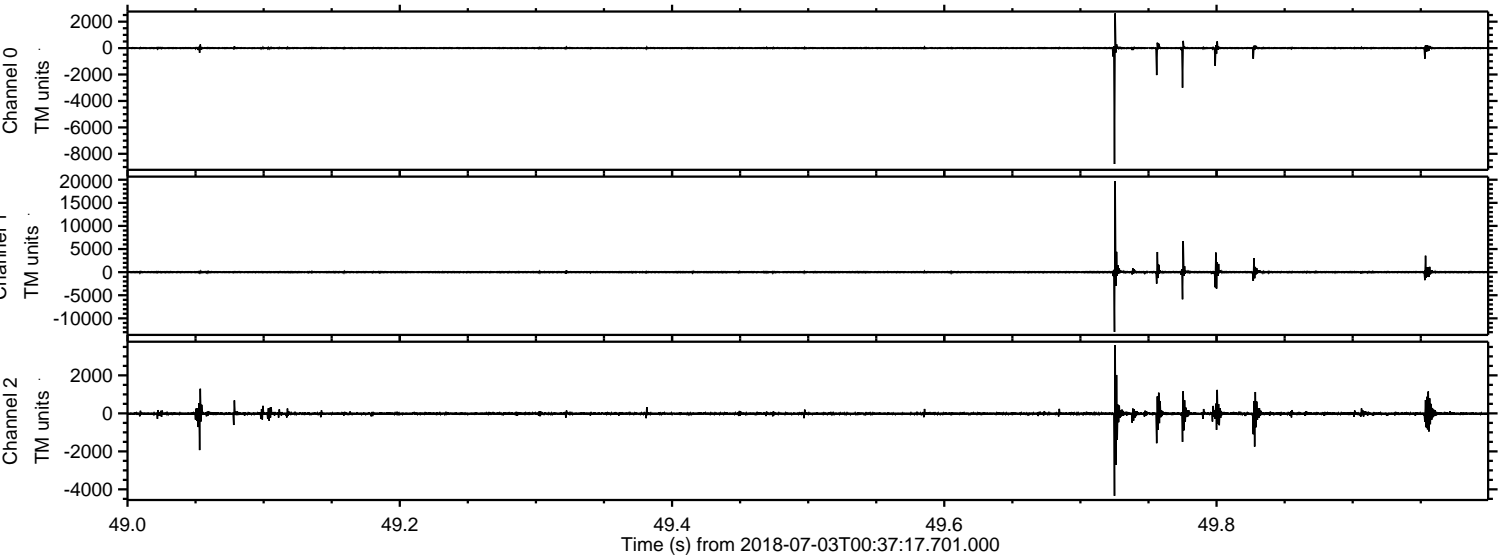
# ELMAVAN 3D WAVEFORMS (Measured data sampled at 50 kHz) 51000 packets of 144 samples from 2018-07-03T00:37:17.701.000.

Processed Tue Jul 3 02:45:23 2018 by ELM ver.2012-10-06 from 001\_\_elm20180703\_003716\_\_dat00.bin



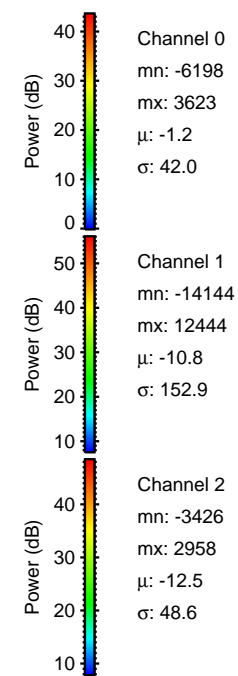
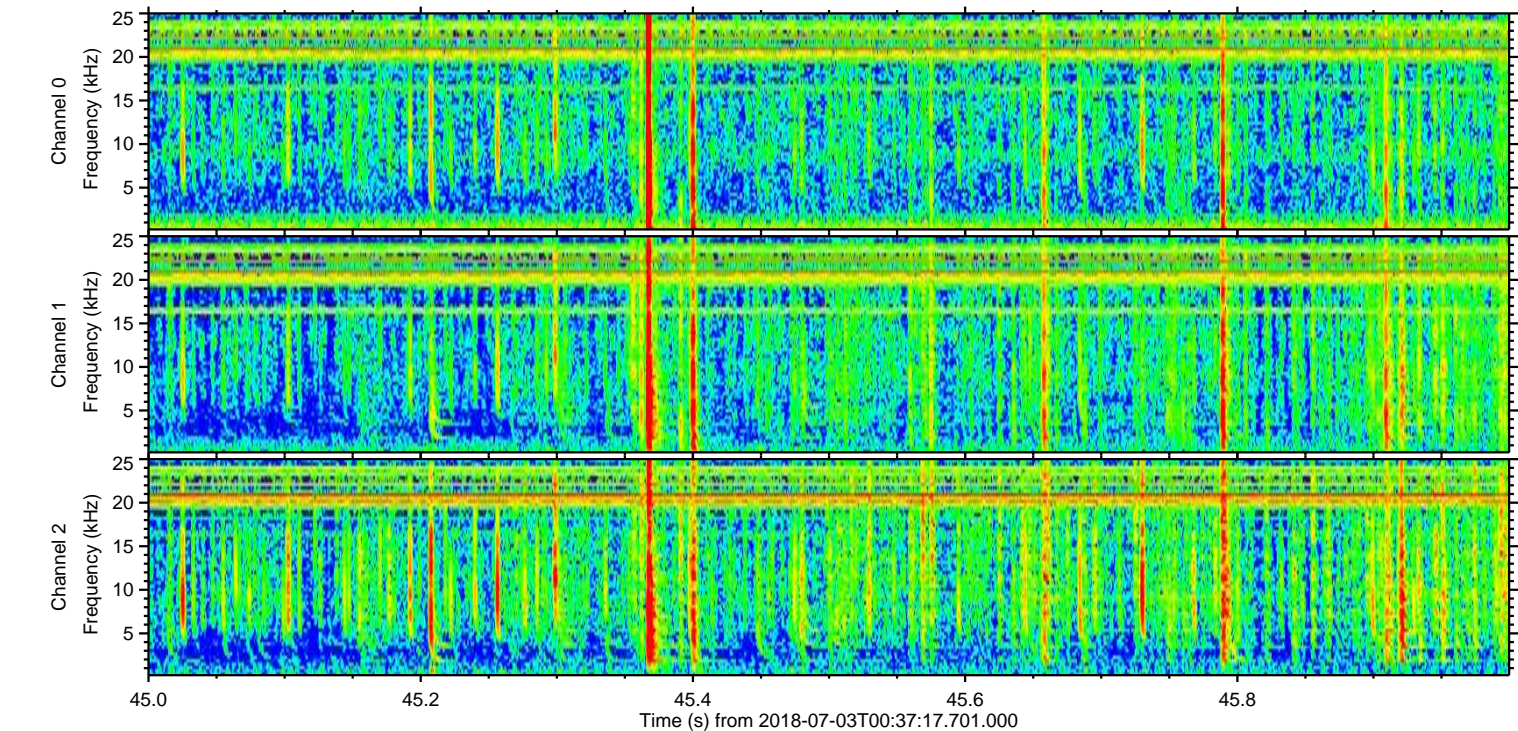
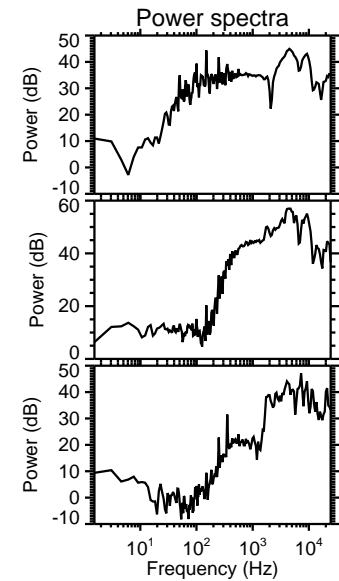
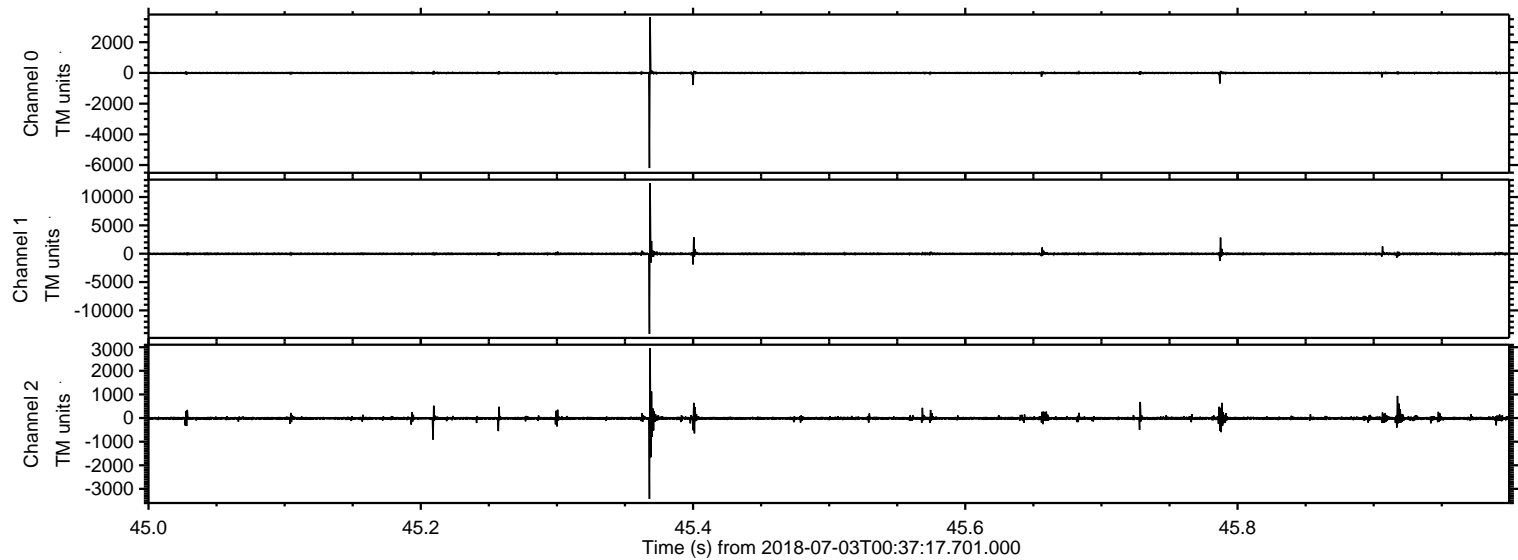


Processed Tue Jul 3 02:45:30 2018 by ELM ver.2012-10-06 from 001\_\_elm20180703\_003716\_\_dat00.bin



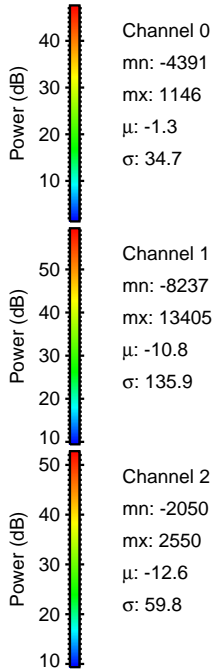
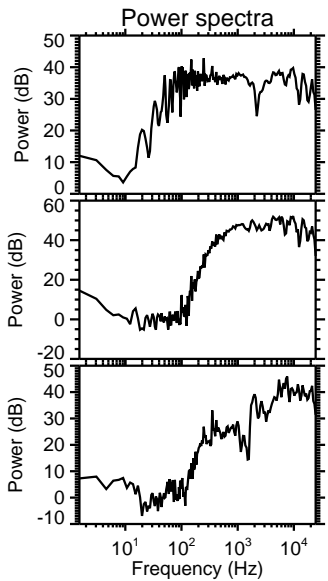
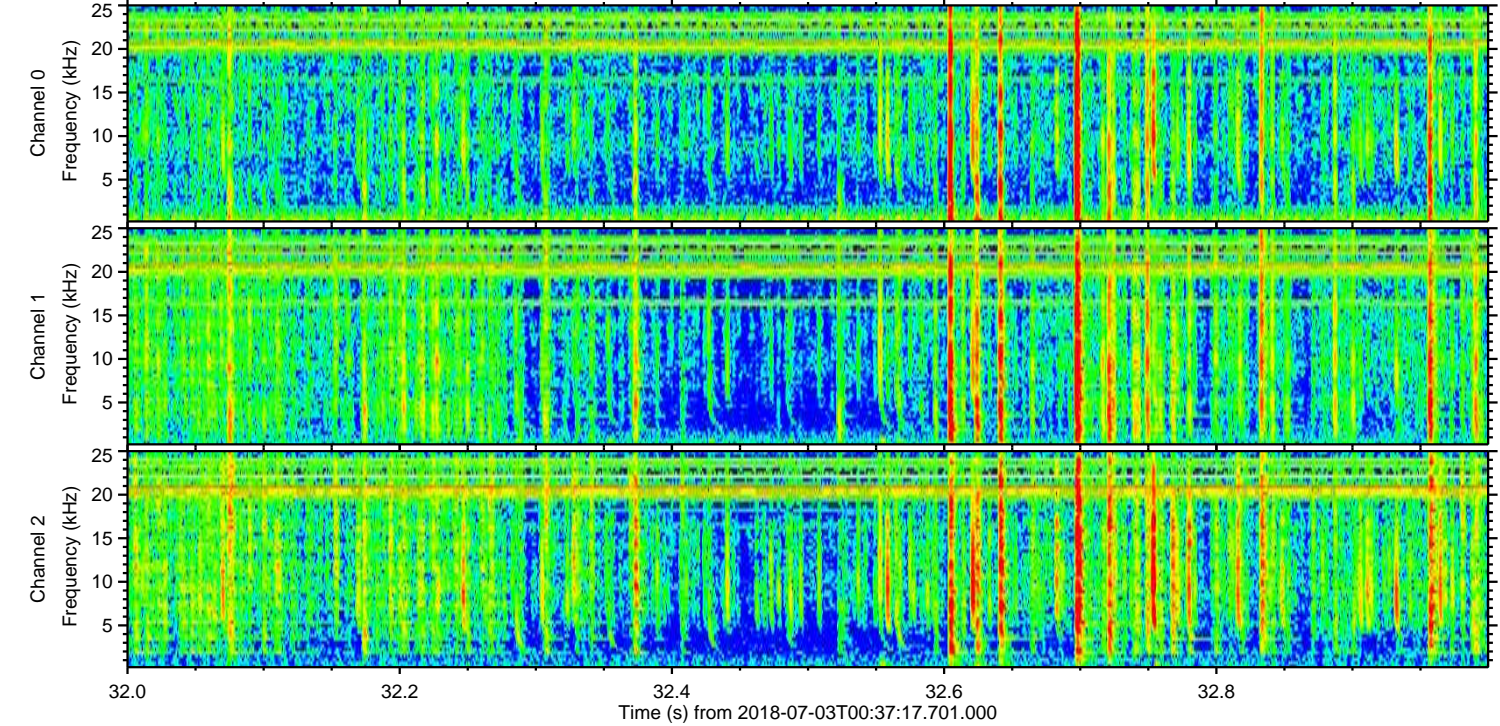
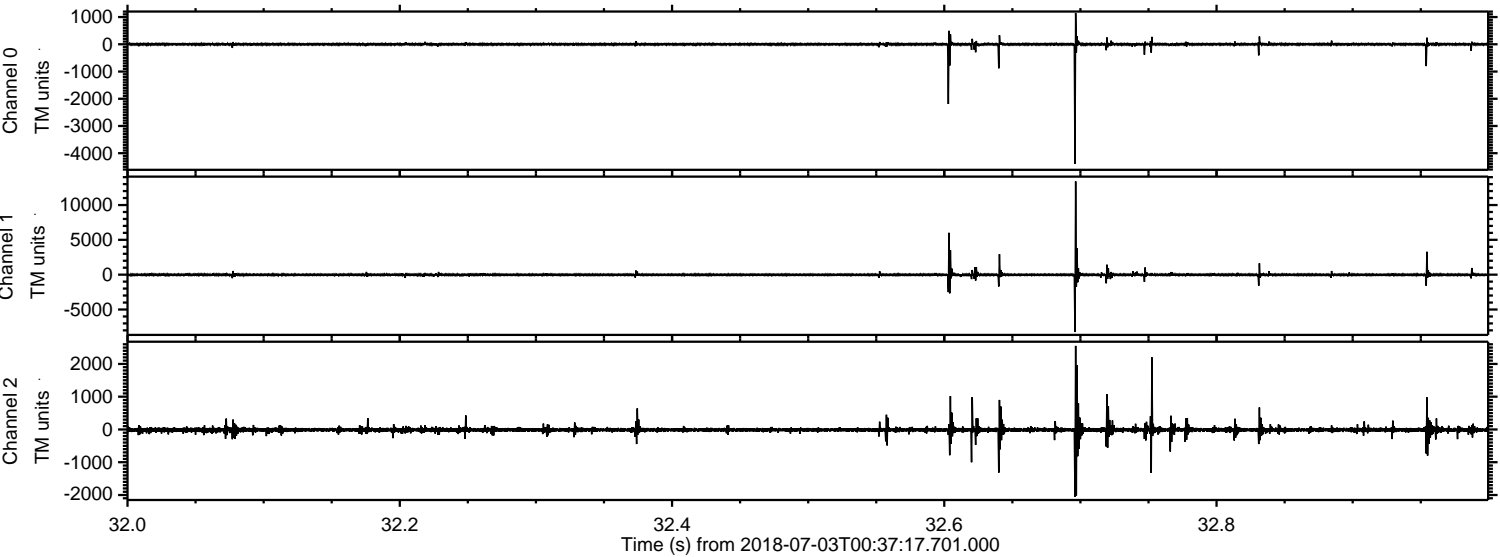


Processed Tue Jul 3 02:45:30 2018 by ELM ver.2012-10-06 from 001\_\_elm20180703\_003716\_\_dat00.bin





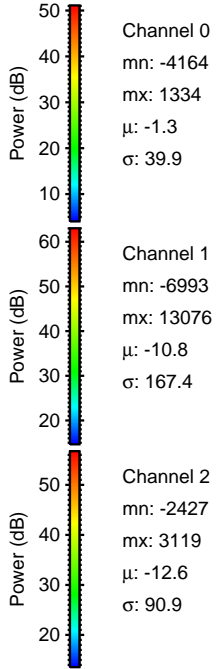
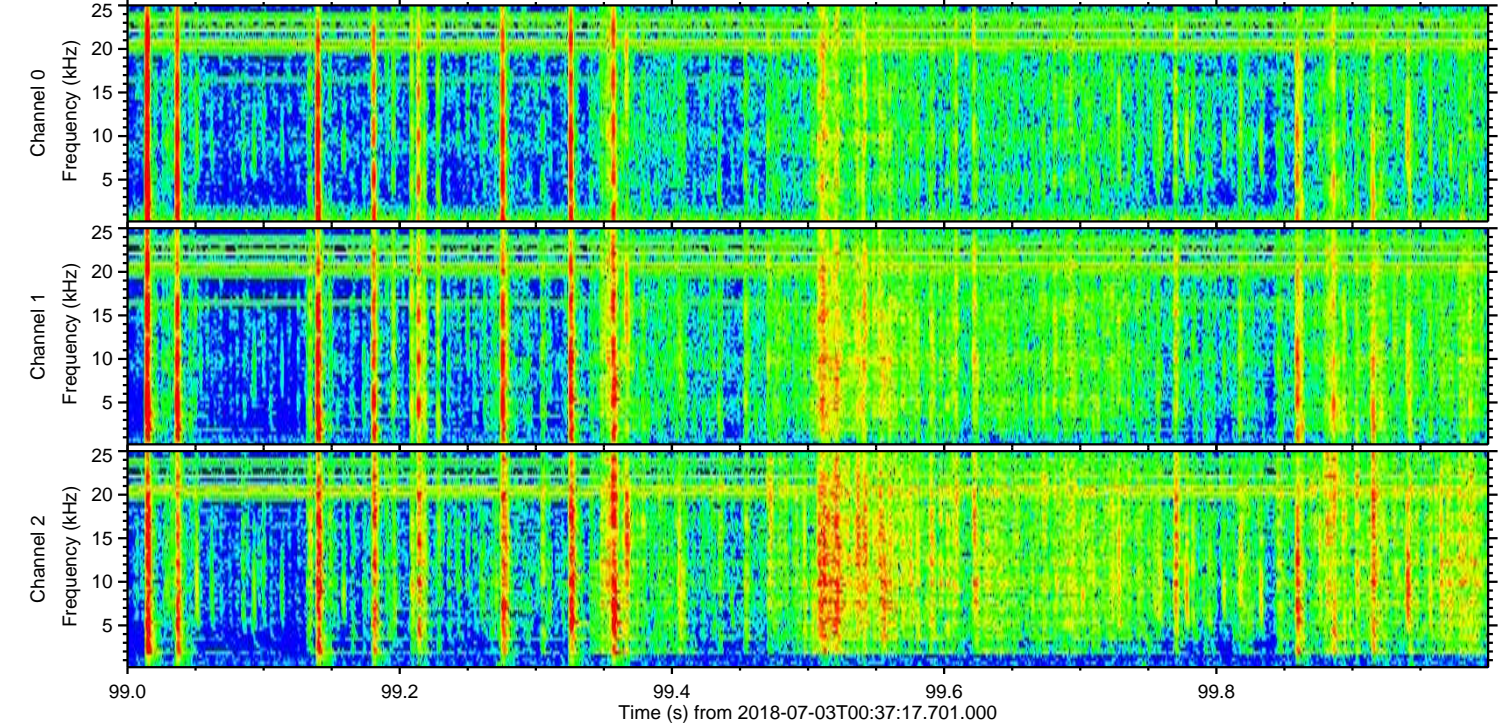
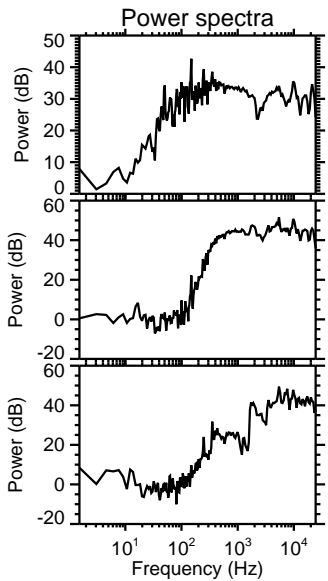
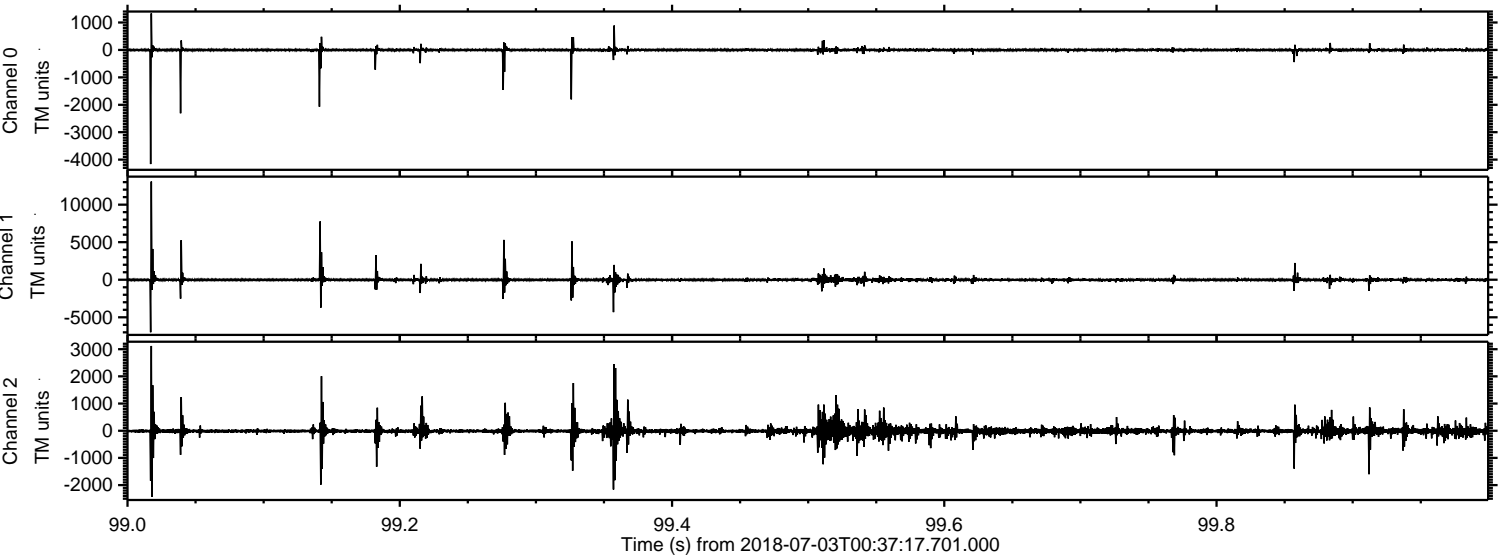
Processed Tue Jul 3 02:45:31 2018 by ELM ver.2012-10-06 from 001\_\_elm20180703\_003716\_\_dat00.bin



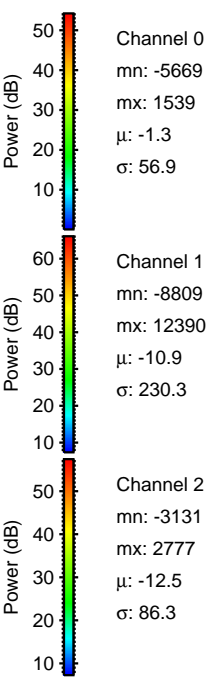
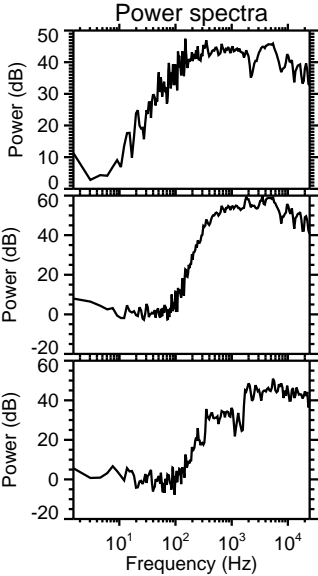
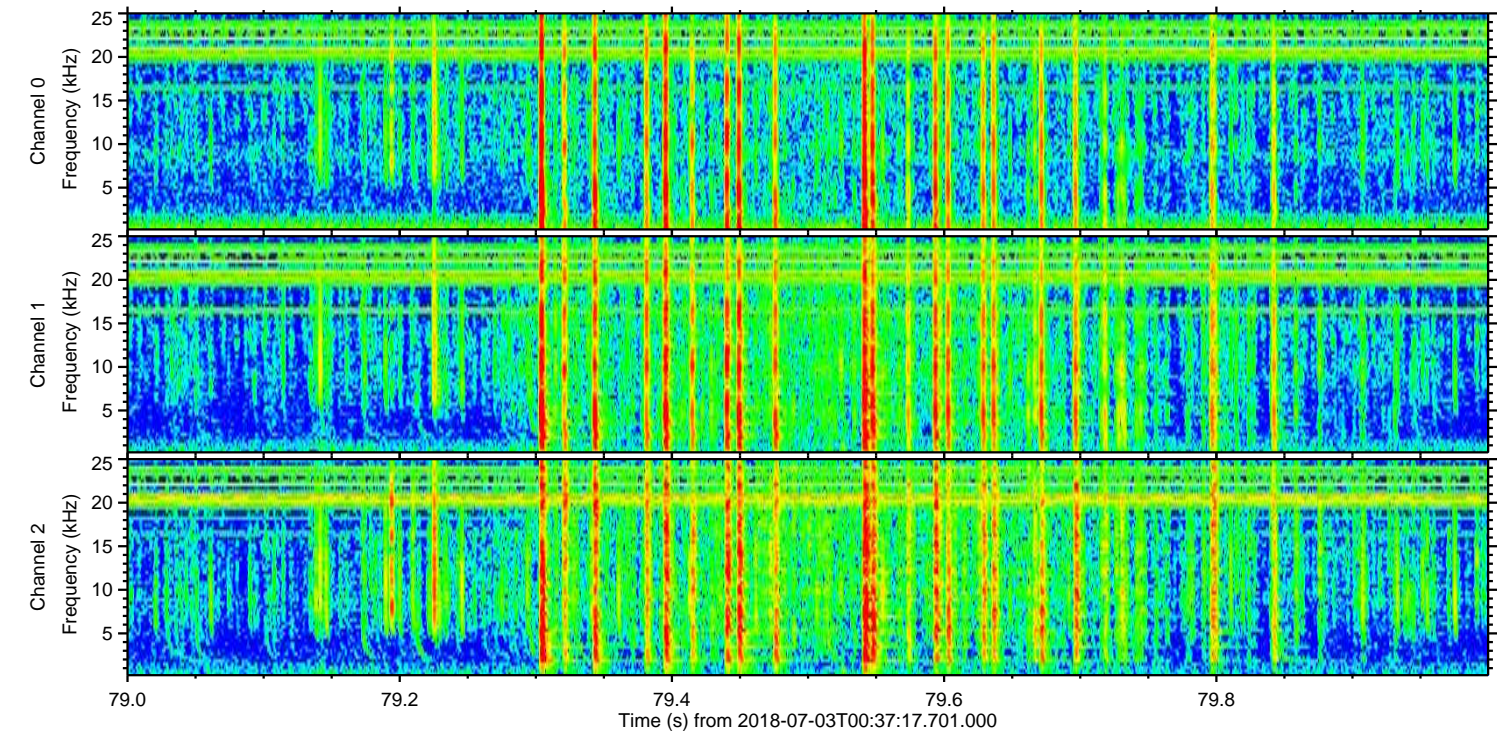
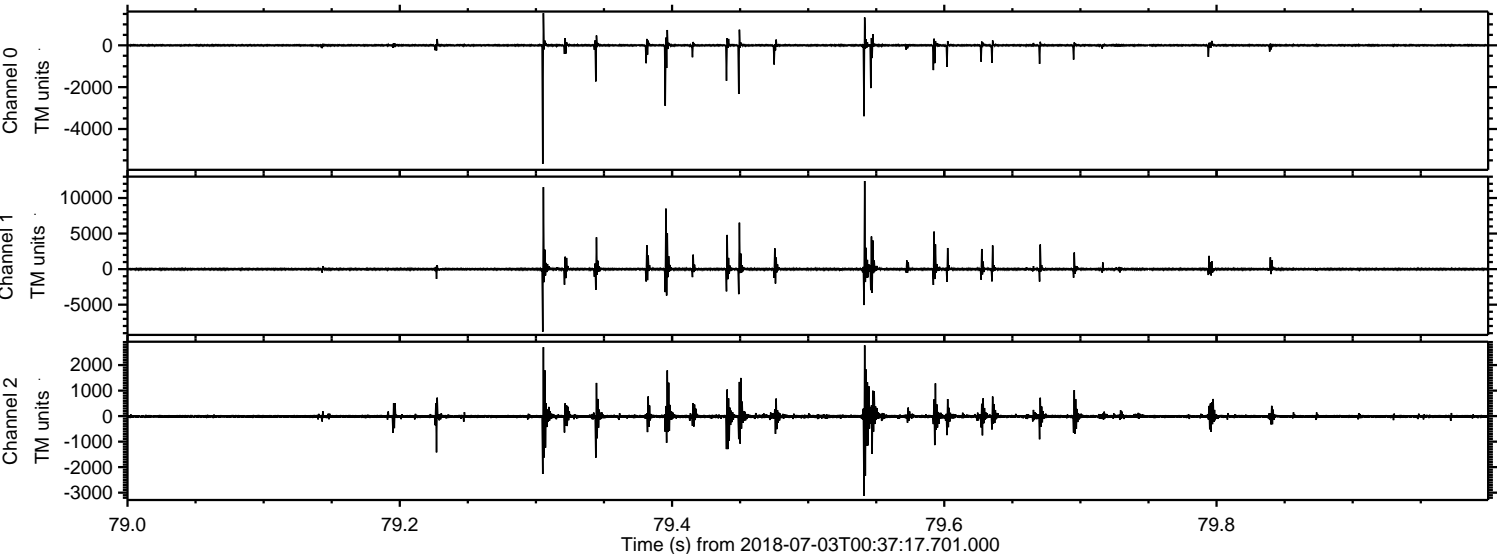


ELMAVAN 3D WAVEFORMS (Measured data sampled at 50 kHz) 51000 packets of 144 samples from 2018-07-03T00:37:17.701.000. Part 100/147

Processed Tue Jul 3 02:45:32 2018 by ELM ver.2012-10-06 from 001\_\_elm20180703\_003716\_\_dat00.bin

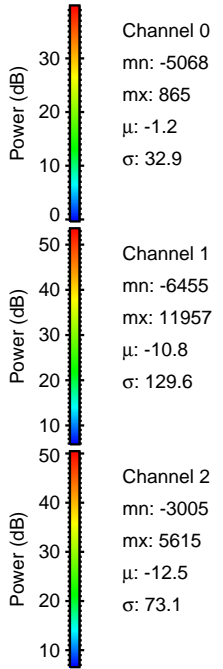
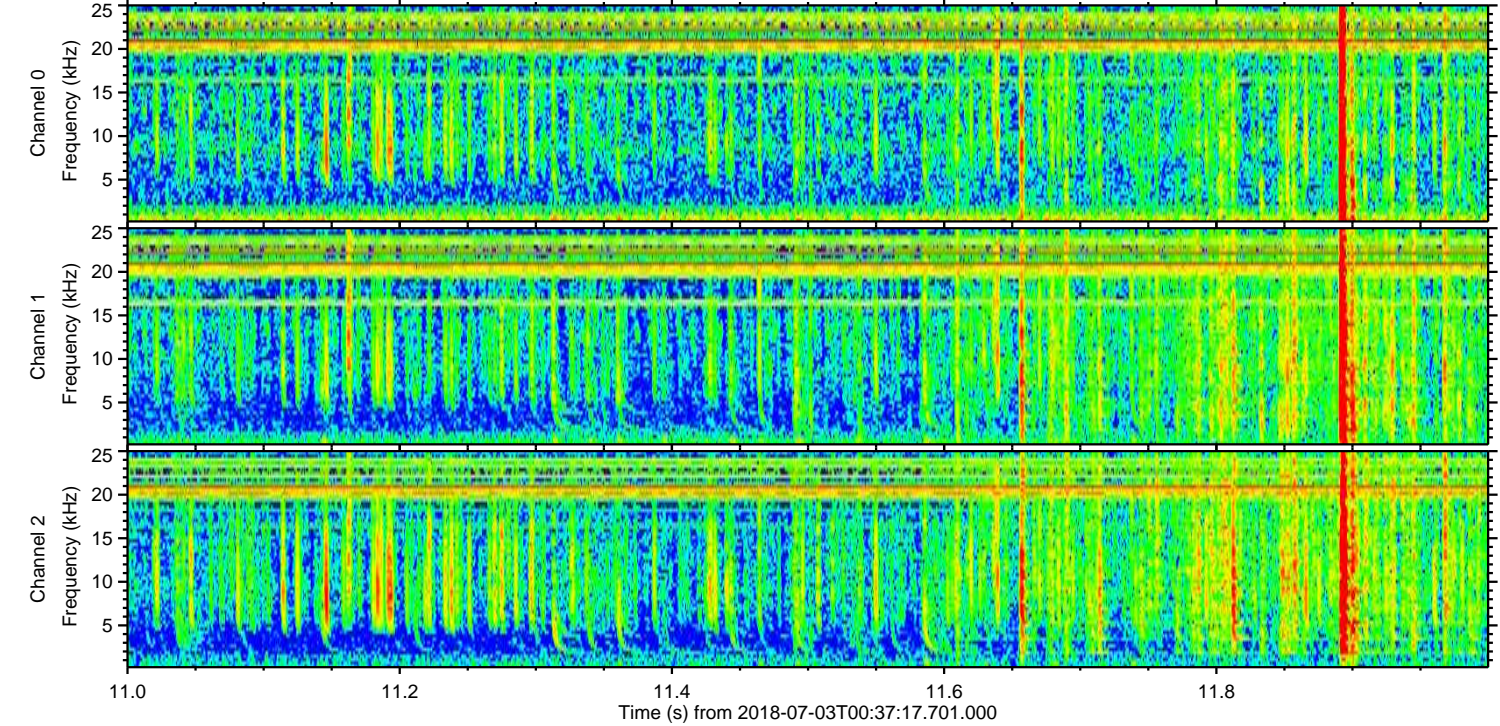
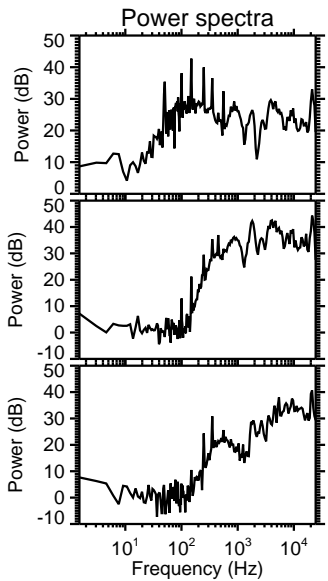
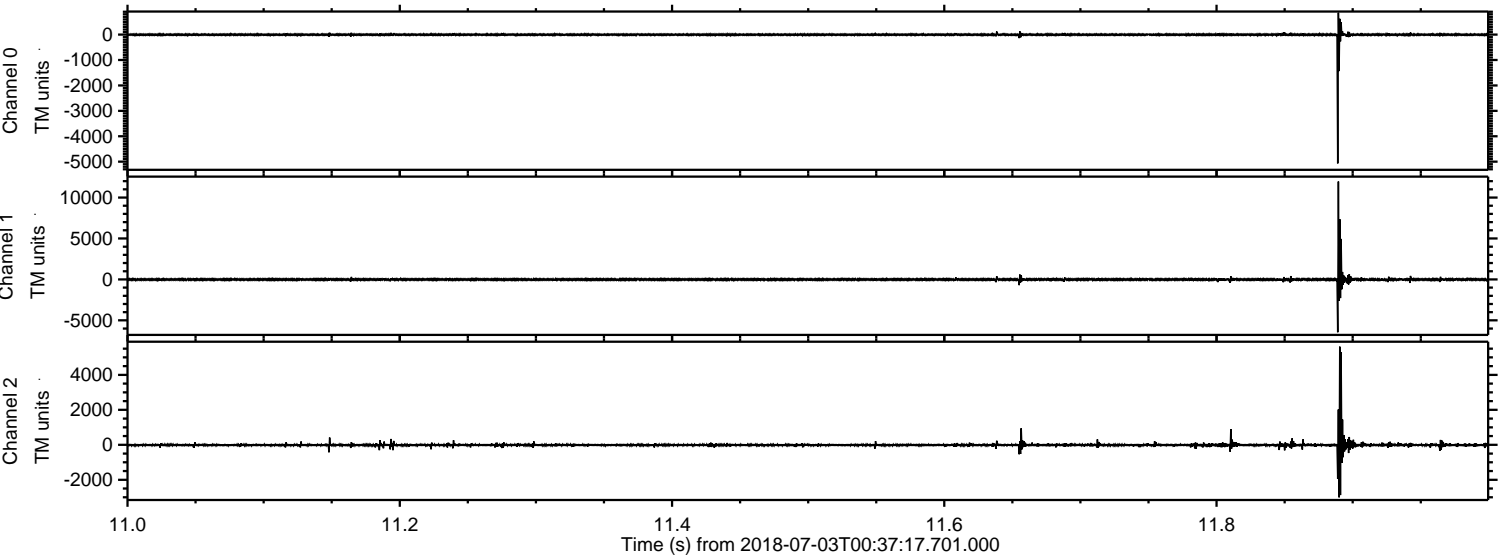


Processed Tue Jul 3 02:45:32 2018 by ELM ver.2012-10-06 from 001\_\_elm20180703\_003716\_\_dat00.bin



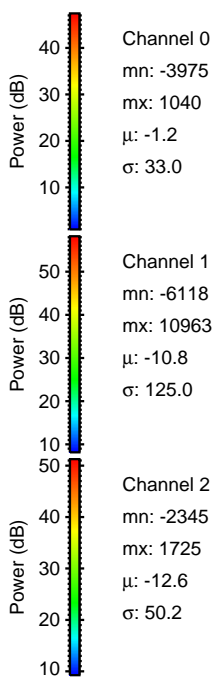
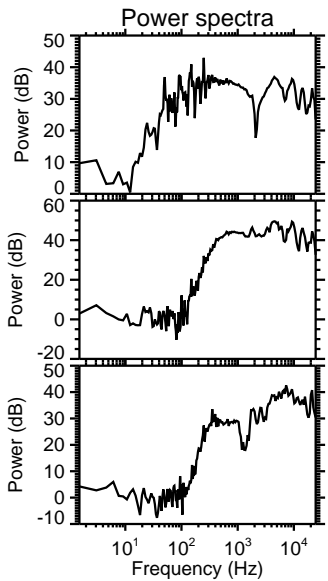
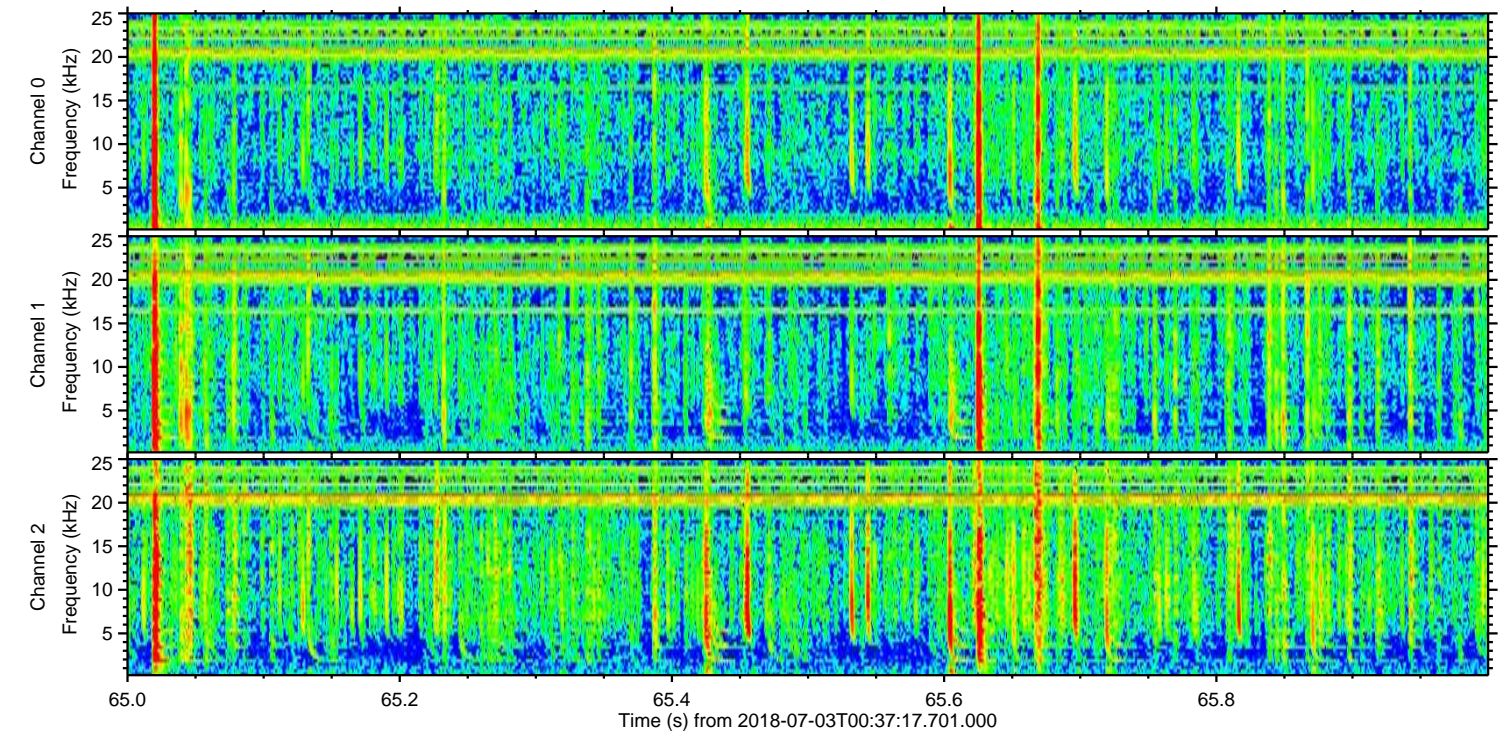
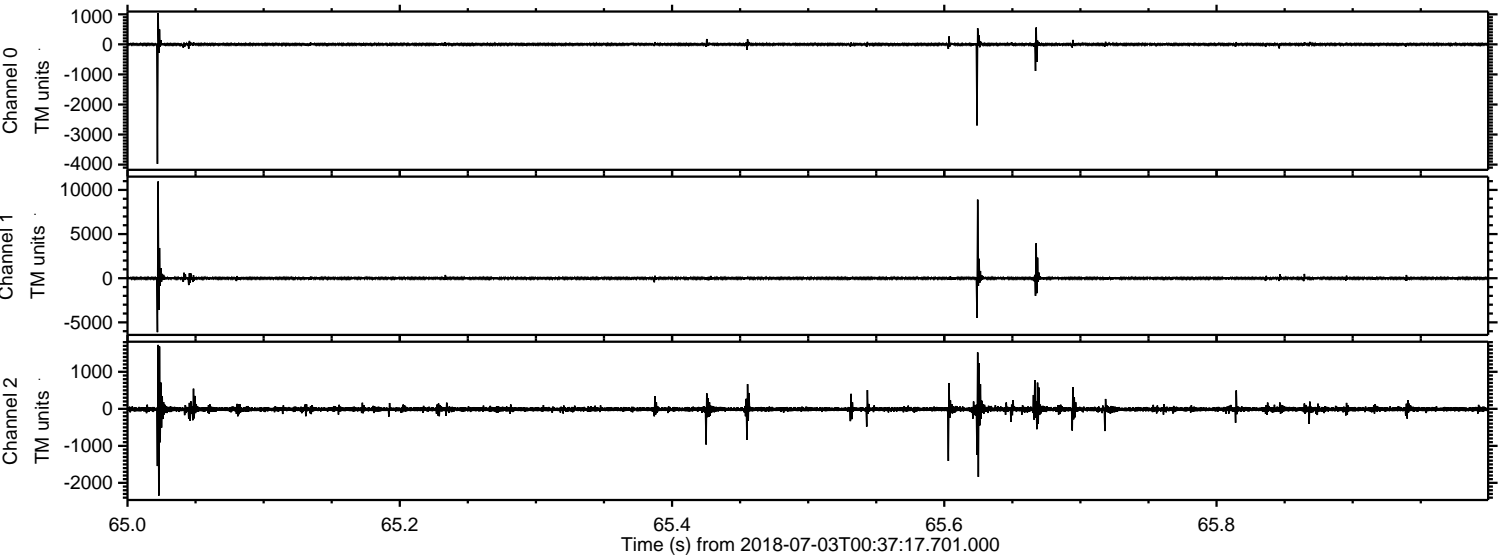


Processed Tue Jul 3 02:45:33 2018 by ELM ver.2012-10-06 from 001\_\_elm20180703\_003716\_\_dat00.bin





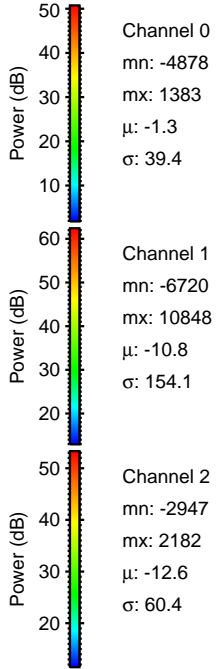
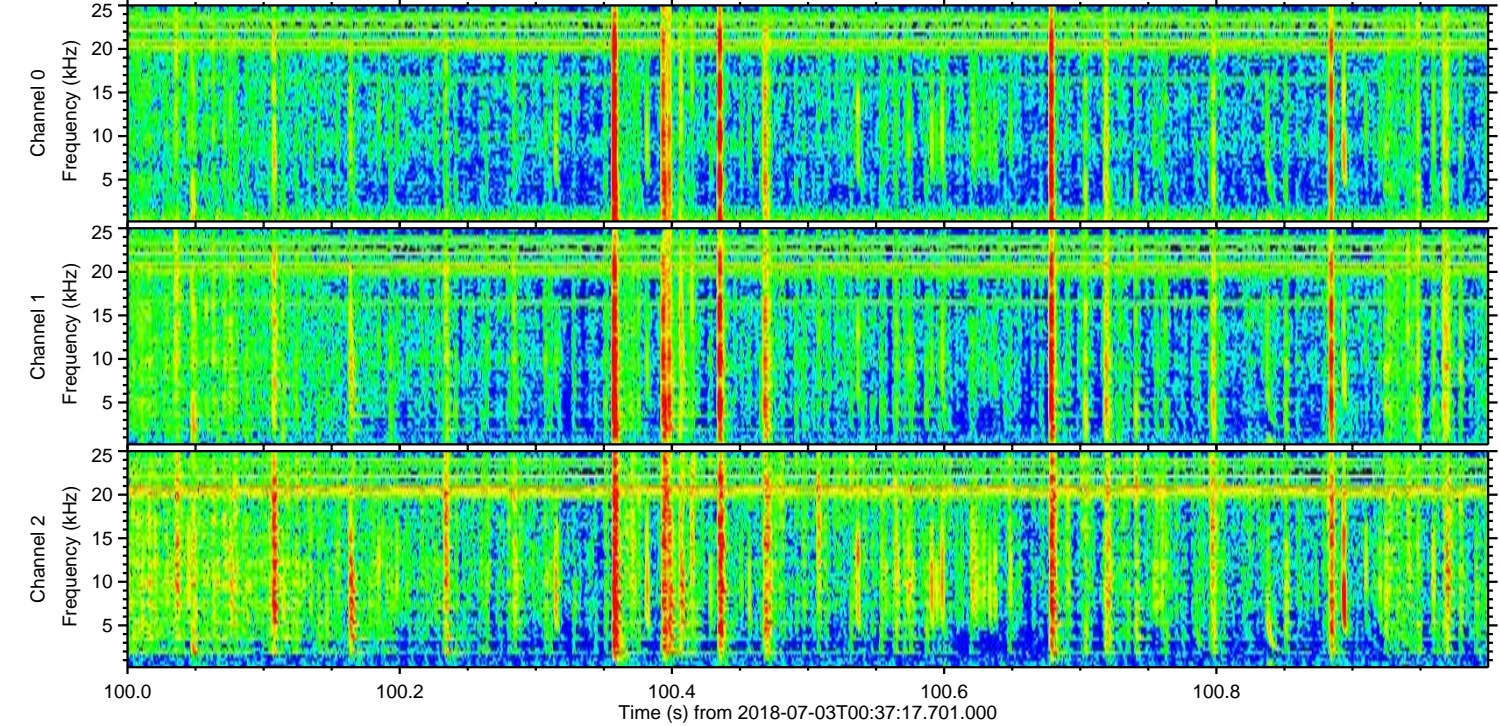
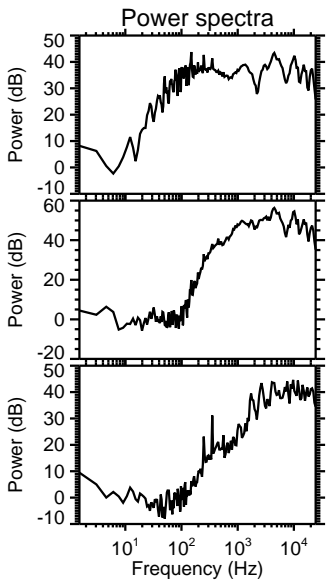
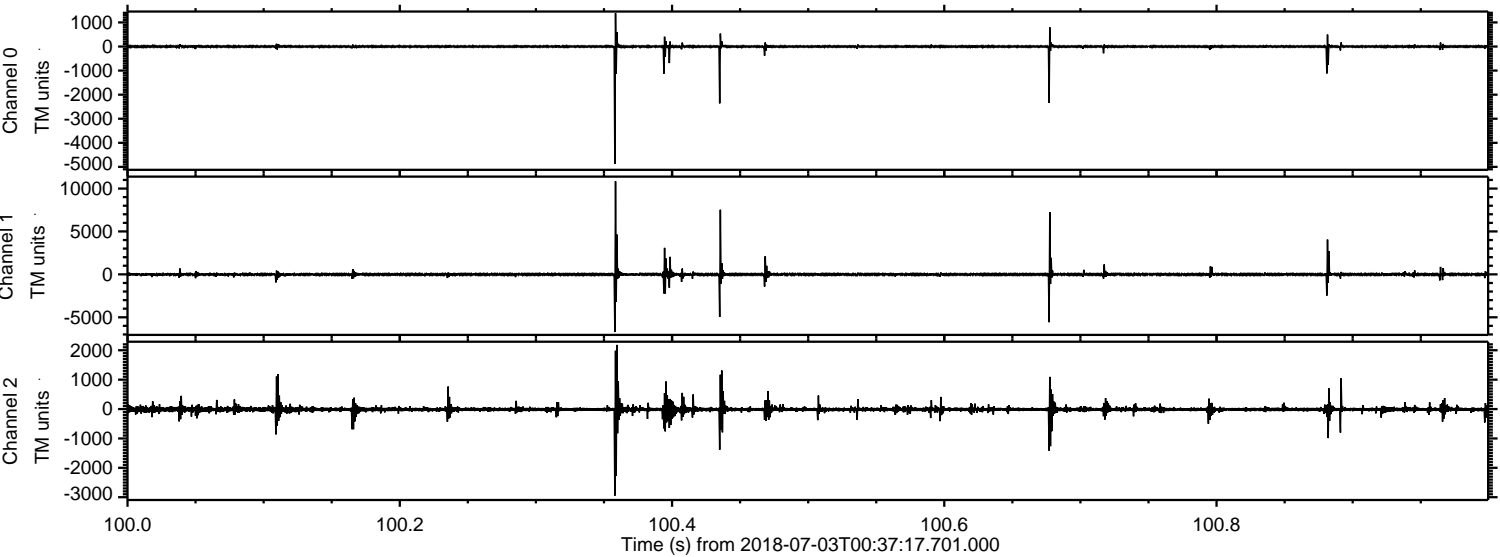
Processed Tue Jul 3 02:45:34 2018 by ELM ver.2012-10-06 from 001\_\_elm20180703\_003716\_\_dat00.bin





ELMAVAN 3D WAVEFORMS (Measured data sampled at 50 kHz) 51000 packets of 144 samples from 2018-07-03T00:37:17.701.000. Part 101/147

Processed Tue Jul 3 02:45:34 2018 by ELM ver.2012-10-06 from 001\_\_elm20180703\_003716\_\_dat00.bin



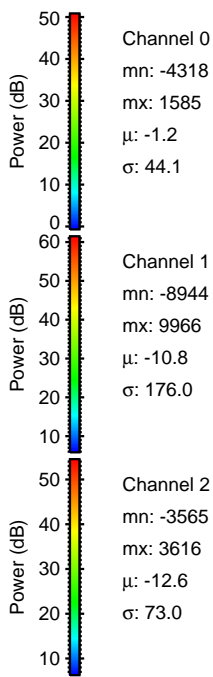
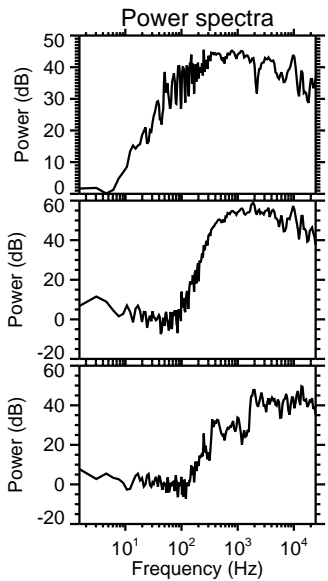
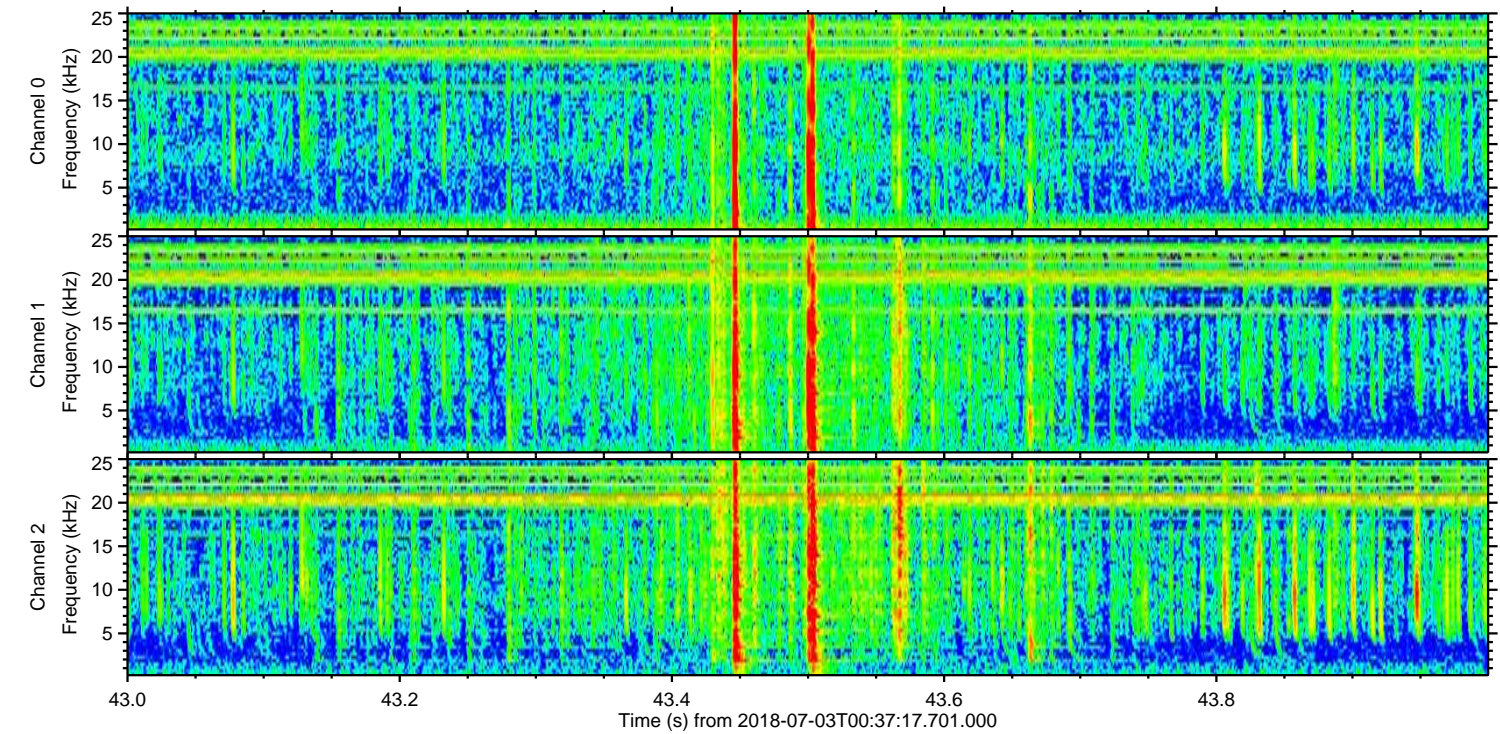
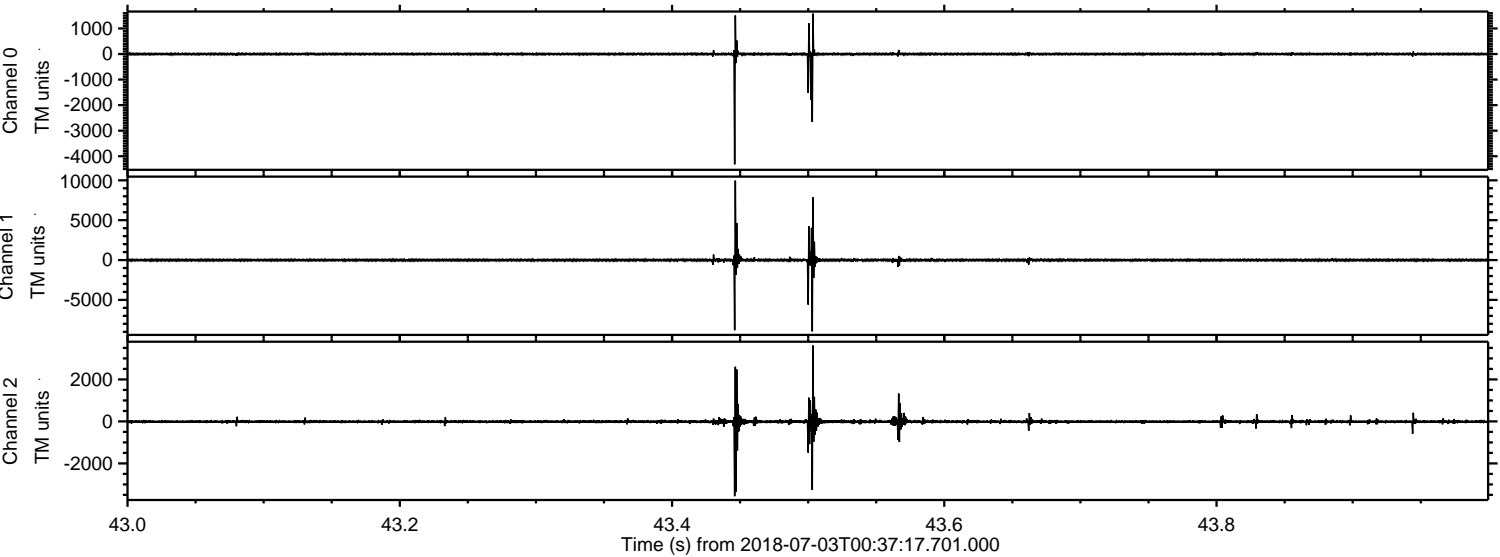
Channel 0  
mn: -4878  
mx: 1383  
 $\mu$ : -1.3  
 $\sigma$ : 39.4

Channel 1  
mn: -6720  
mx: 10848  
 $\mu$ : -10.8  
 $\sigma$ : 154.1

Channel 2  
mn: -2947  
mx: 2182  
 $\mu$ : -12.6  
 $\sigma$ : 60.4



Processed Tue Jul 3 02:45:35 2018 by ELM ver.2012-10-06 from 001\_\_elm20180703\_003716\_\_dat00.bin





Processed Tue Jul 3 02:45:36 2018 by ELM ver.2012-10-06 from 001\_\_elm20180703\_003716\_\_dat00.bin

