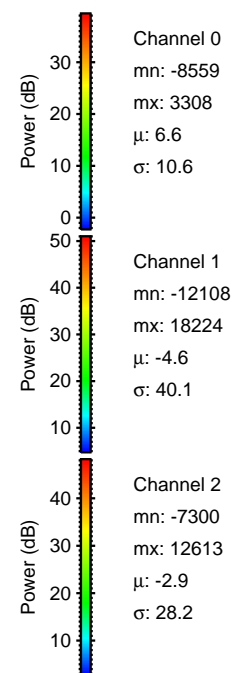
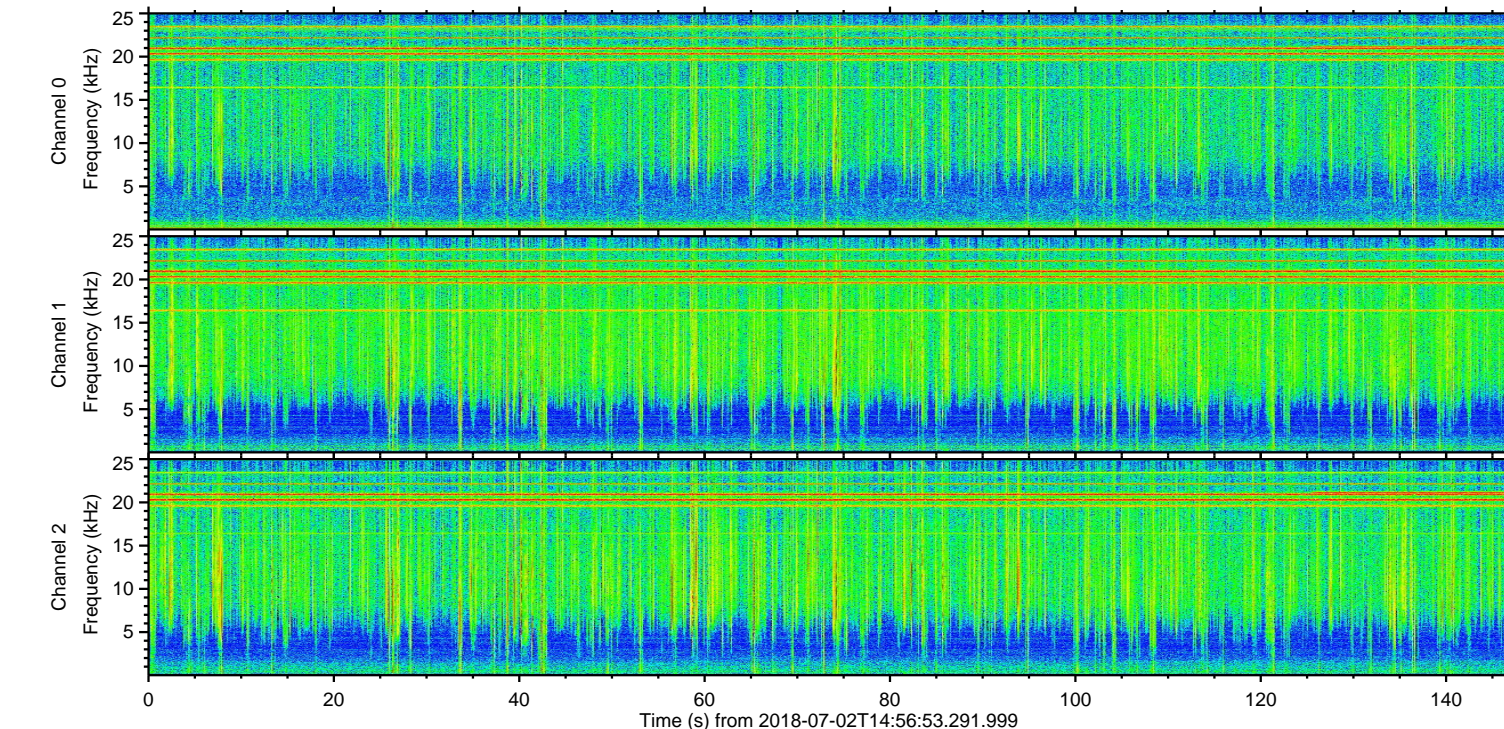
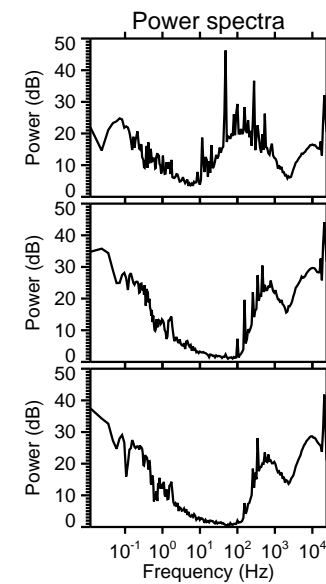
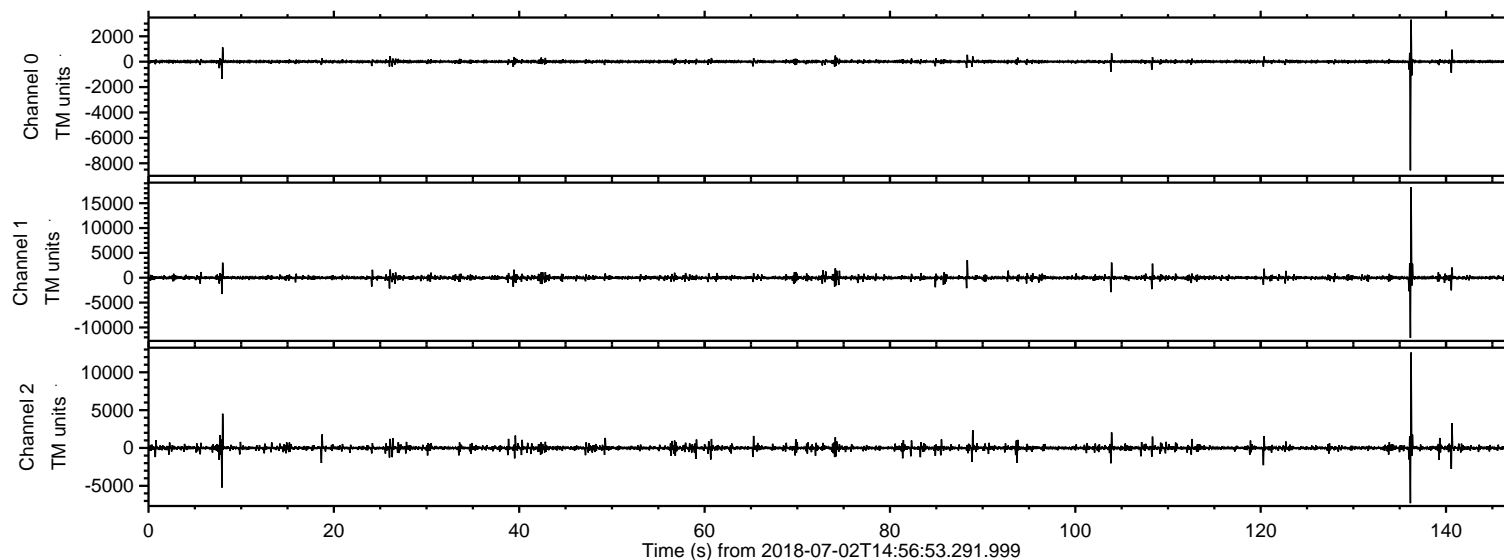


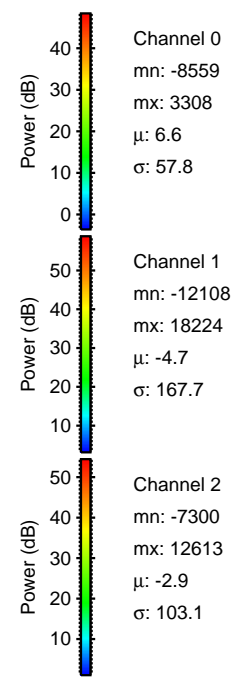
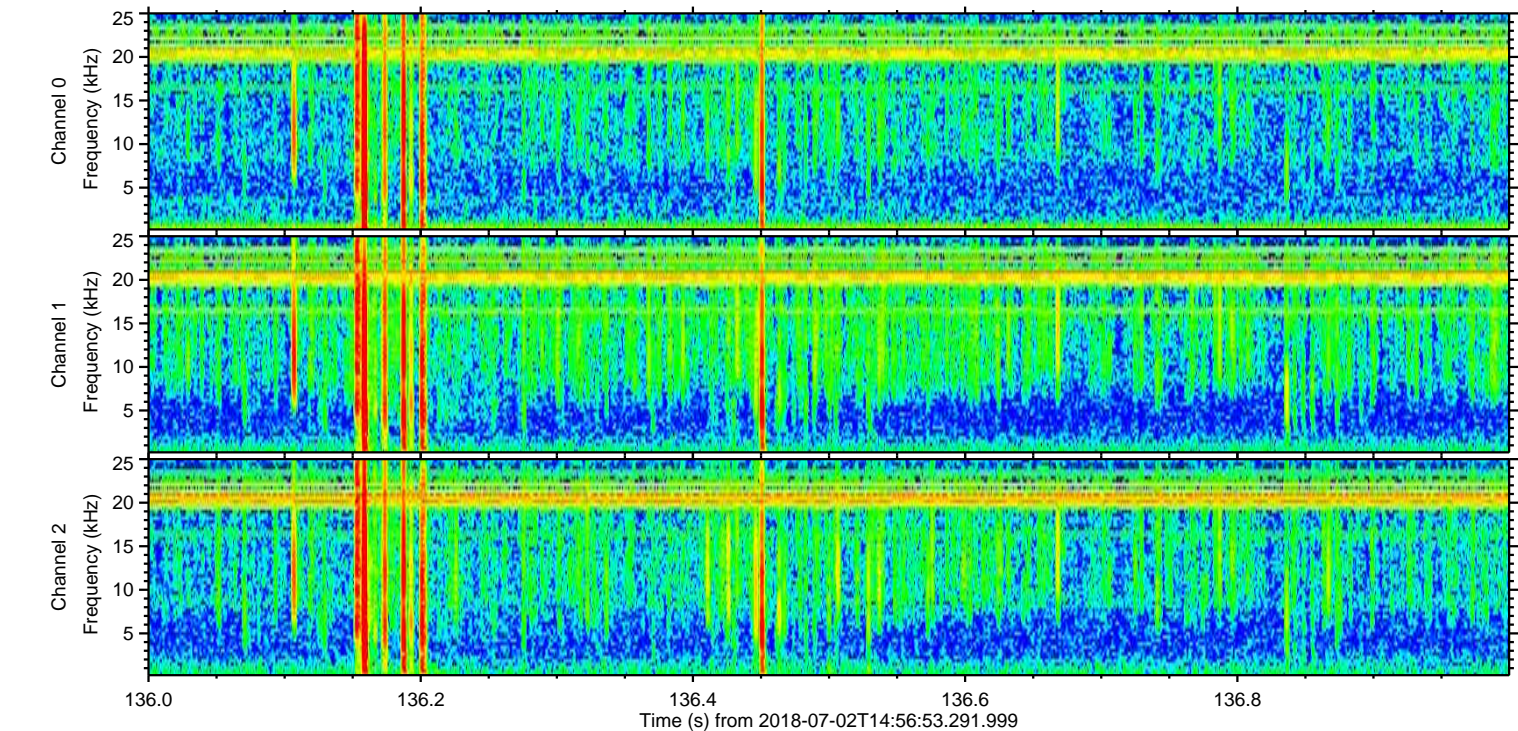
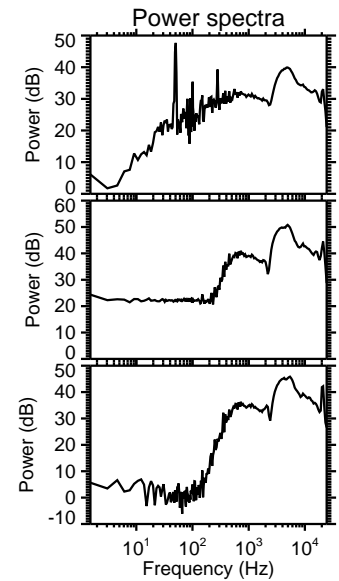
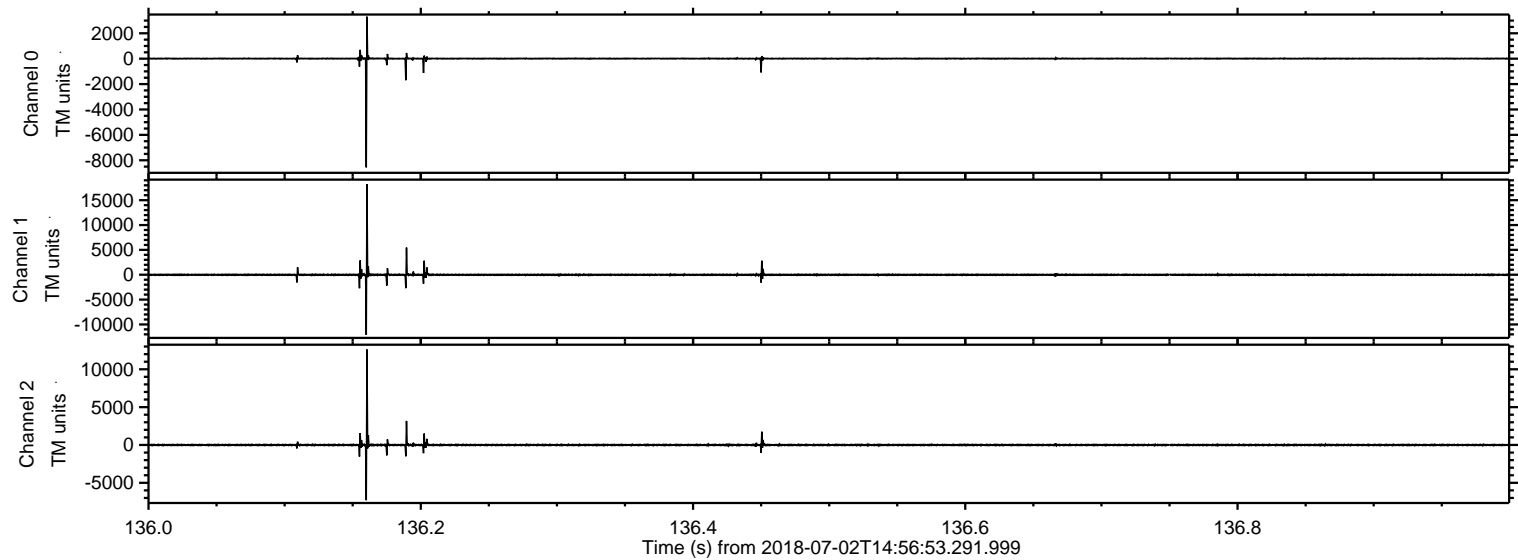
ELMAVAN 3D WAVEFORMS (Measured data sampled at 50 kHz) 51000 packets of 144 samples from 2018-07-02T14:56:53.291.999.

Processed Mon Jul 2 17:04:30 2018 by ELM ver.2012-10-06 from 001__elm20180702_145652__dat00.bin

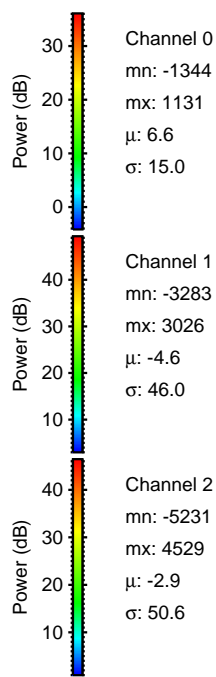
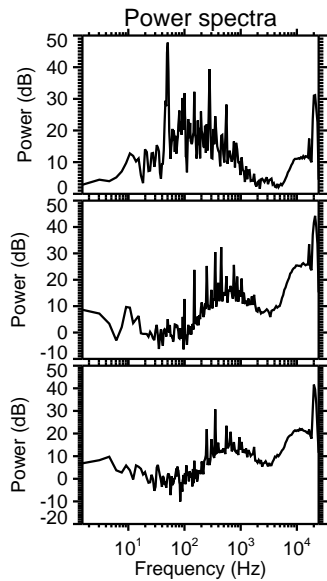
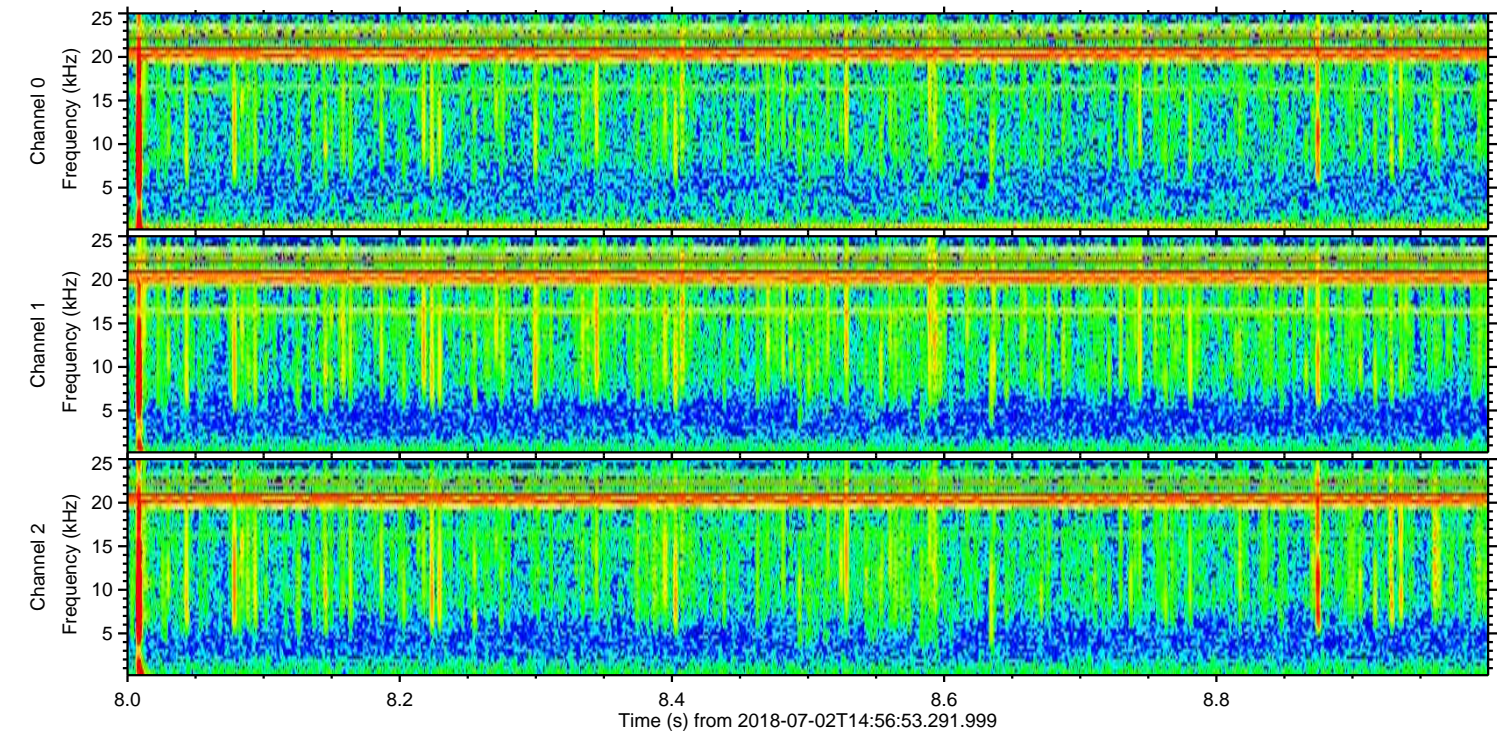
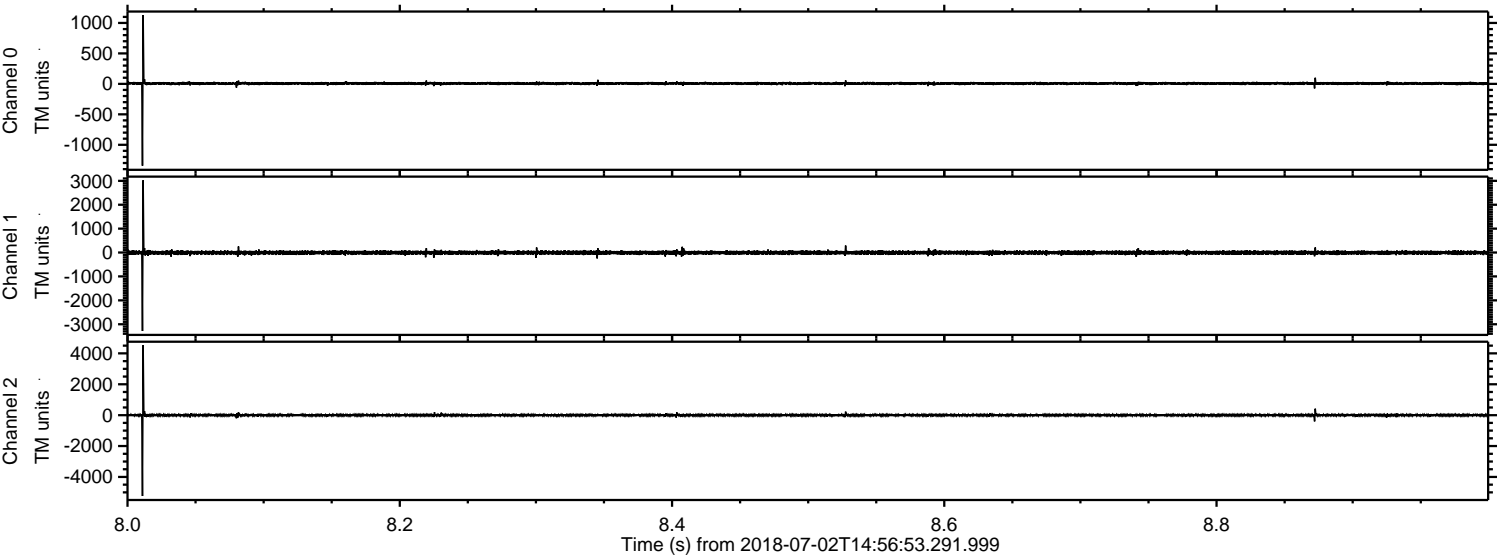


ELMAVAN 3D WAVEFORMS (Measured data sampled at 50 kHz) 51000 packets of 144 samples from 2018-07-02T14:56:53.291.999. Part 137/147

Processed Mon Jul 2 17:04:36 2018 by ELM ver.2012-10-06 from 001__elm20180702_145652__dat00.bin



Processed Mon Jul 2 17:04:37 2018 by ELM ver.2012-10-06 from 001__elm20180702_145652__dat00.bin

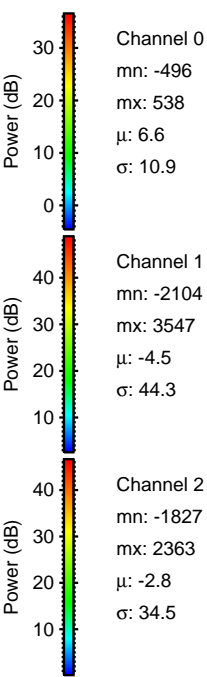
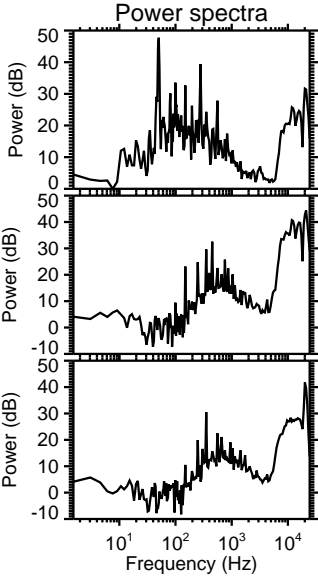
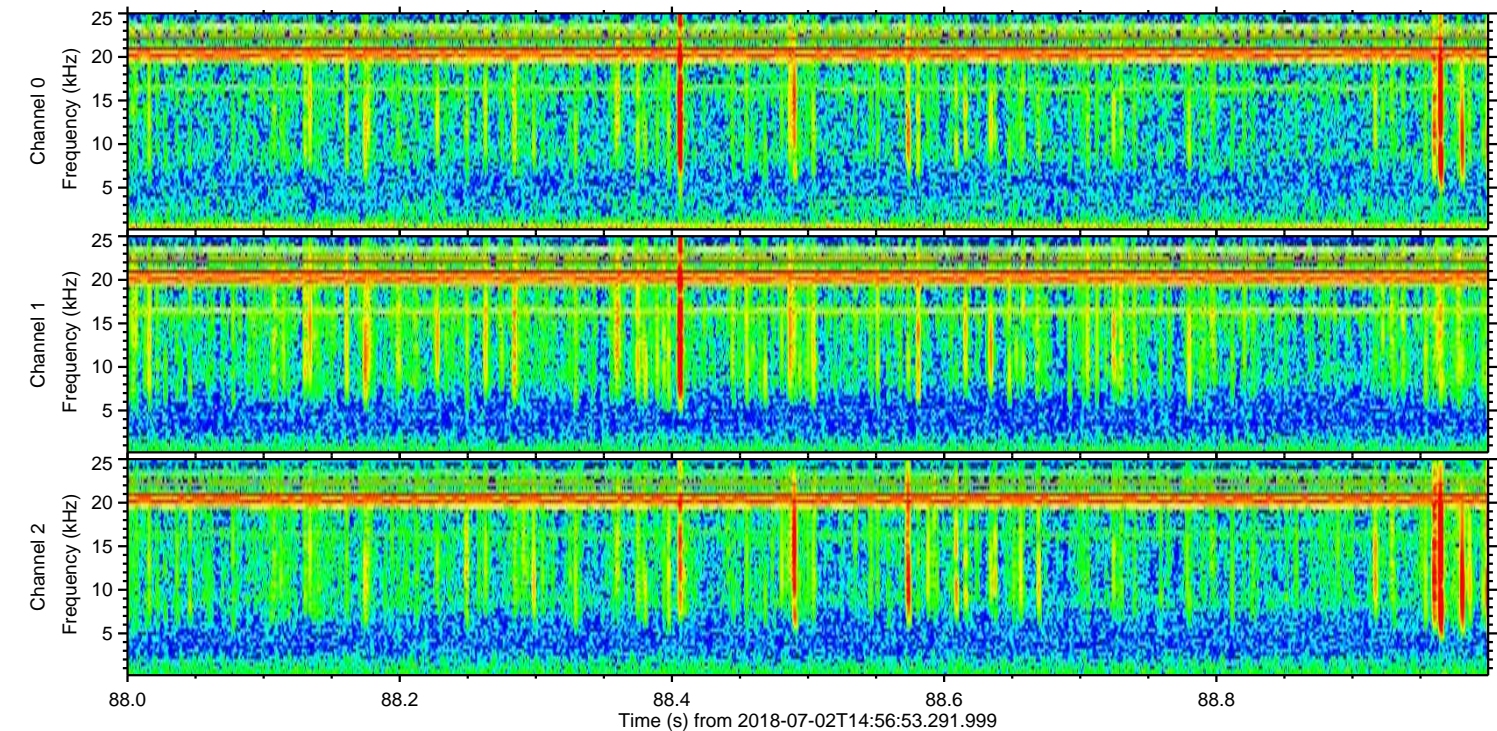
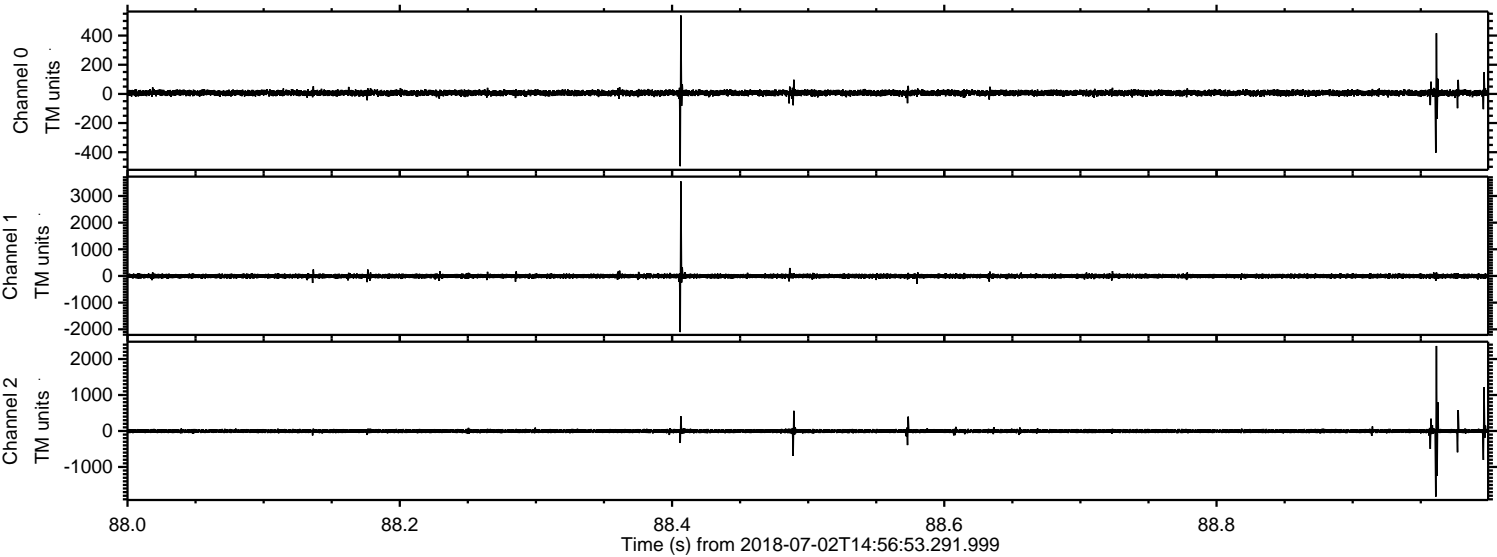


Channel 0
mn: -1344
mx: 1131
 μ : 6.6
 σ : 15.0

Channel 1
mn: -3283
mx: 3026
 μ : -4.6
 σ : 46.0

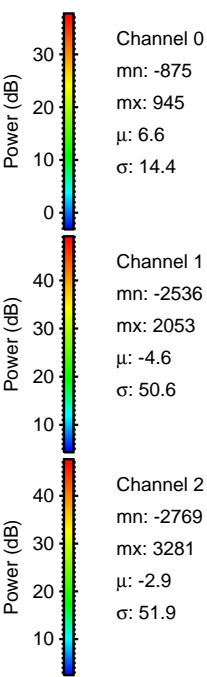
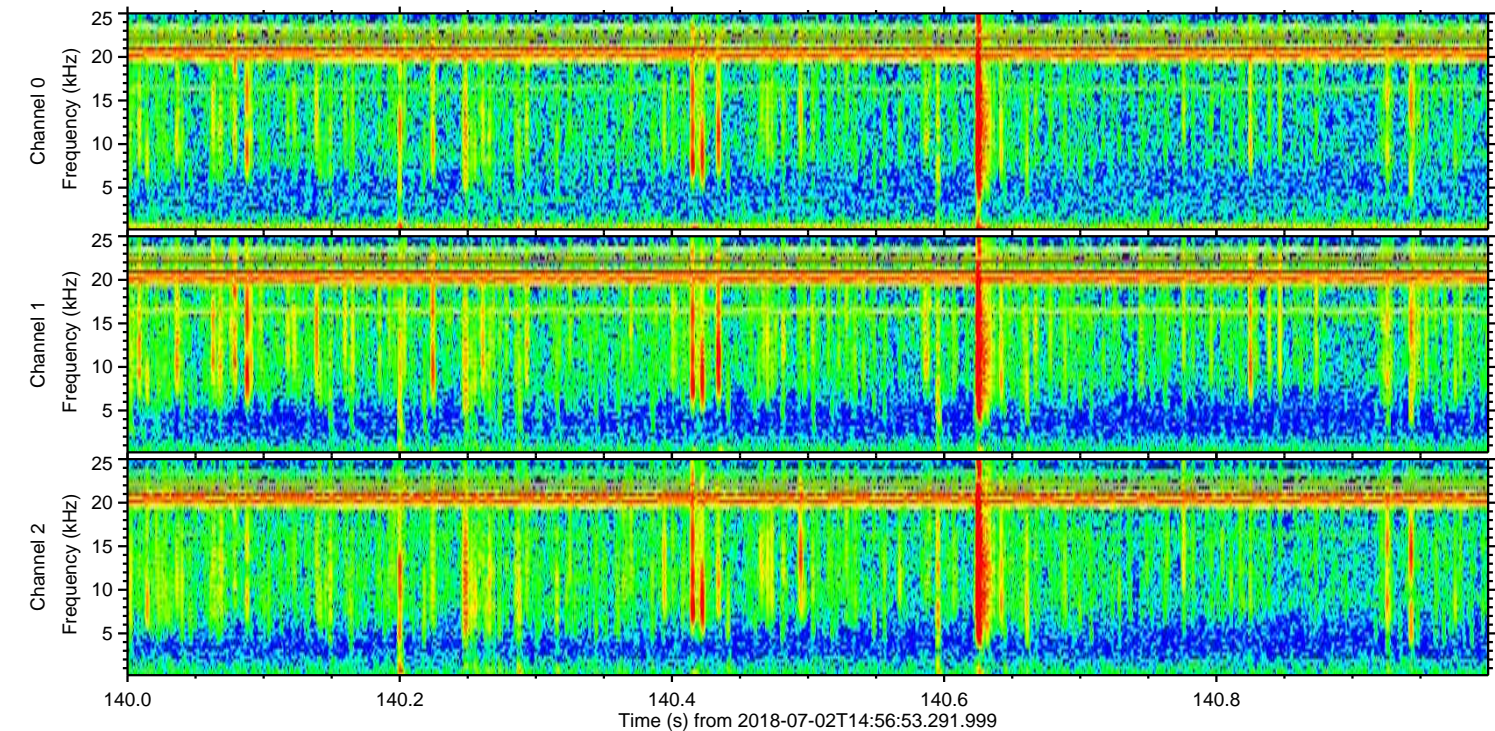
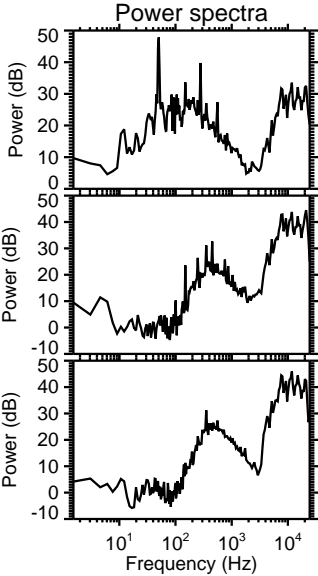
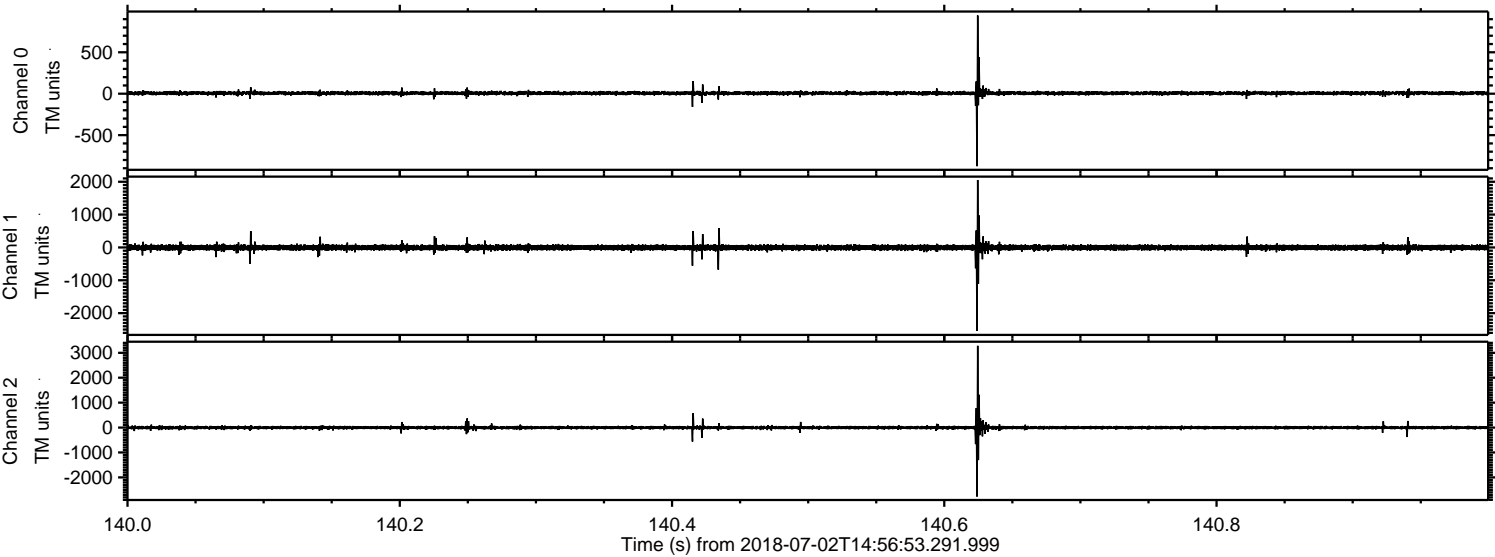
Channel 2
mn: -5231
mx: 4529
 μ : -2.9
 σ : 50.6

Processed Mon Jul 2 17:04:38 2018 by ELM ver.2012-10-06 from 001__elm20180702_145652__dat00.bin



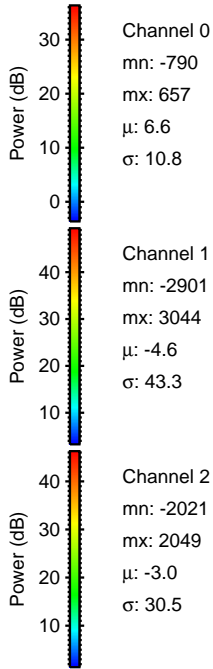
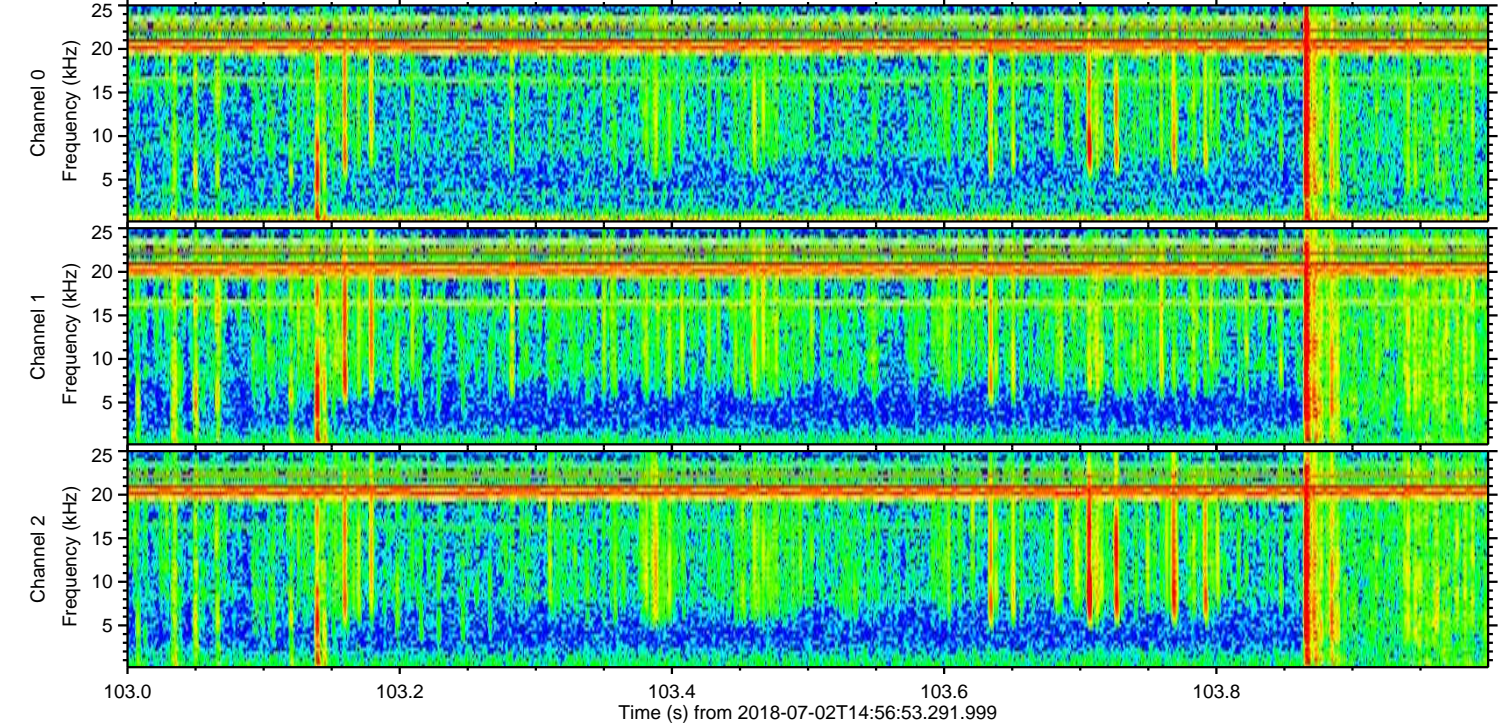
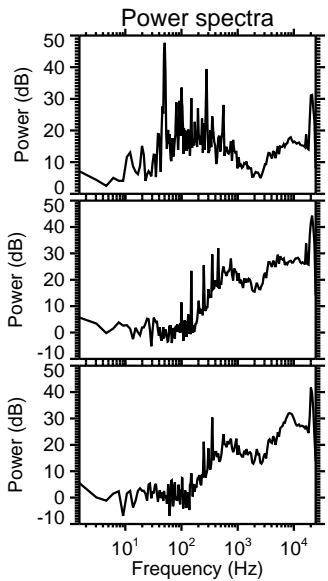
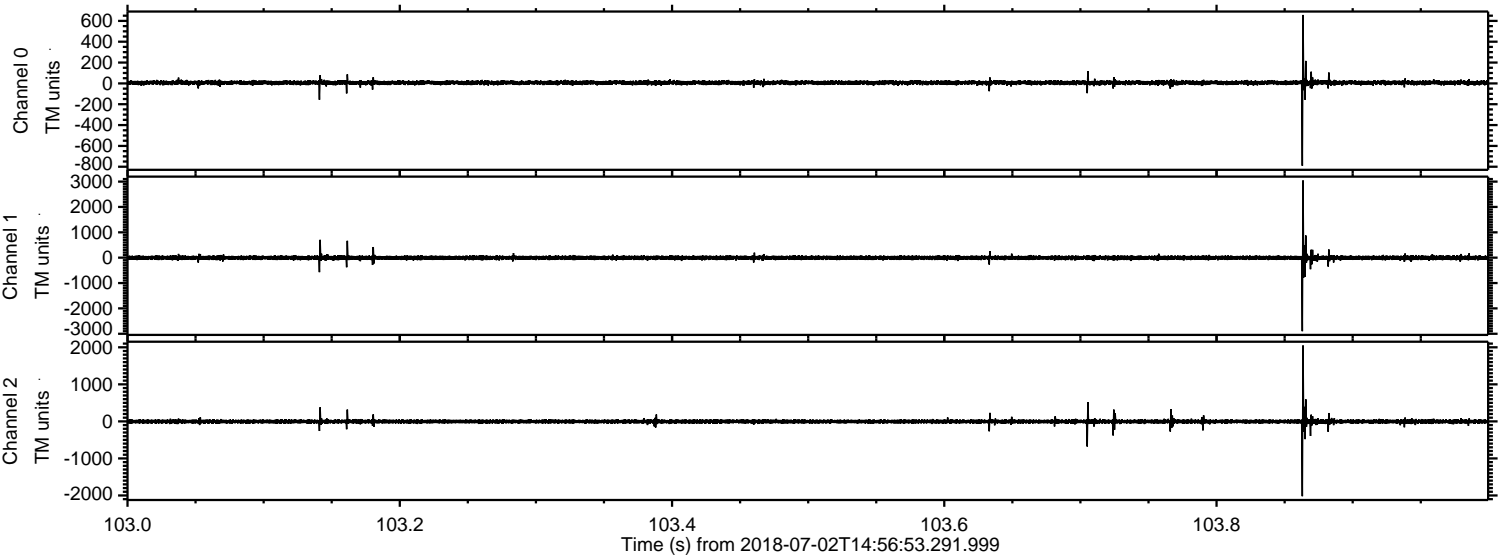
ELMAVAN 3D WAVEFORMS (Measured data sampled at 50 kHz) 51000 packets of 144 samples from 2018-07-02T14:56:53.291.999. Part 141/147

Processed Mon Jul 2 17:04:39 2018 by ELM ver.2012-10-06 from 001__elm20180702_145652__dat00.bin

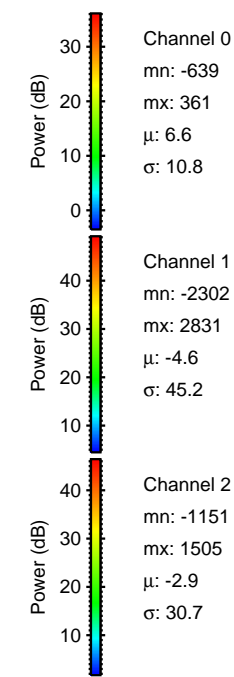
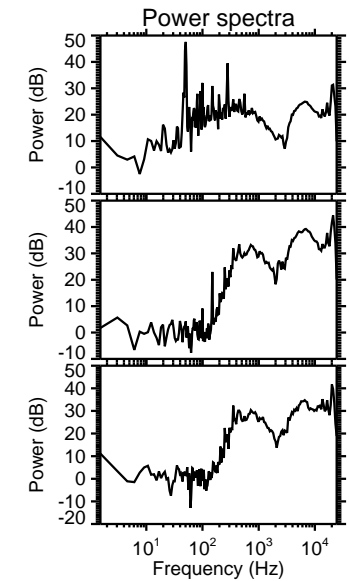
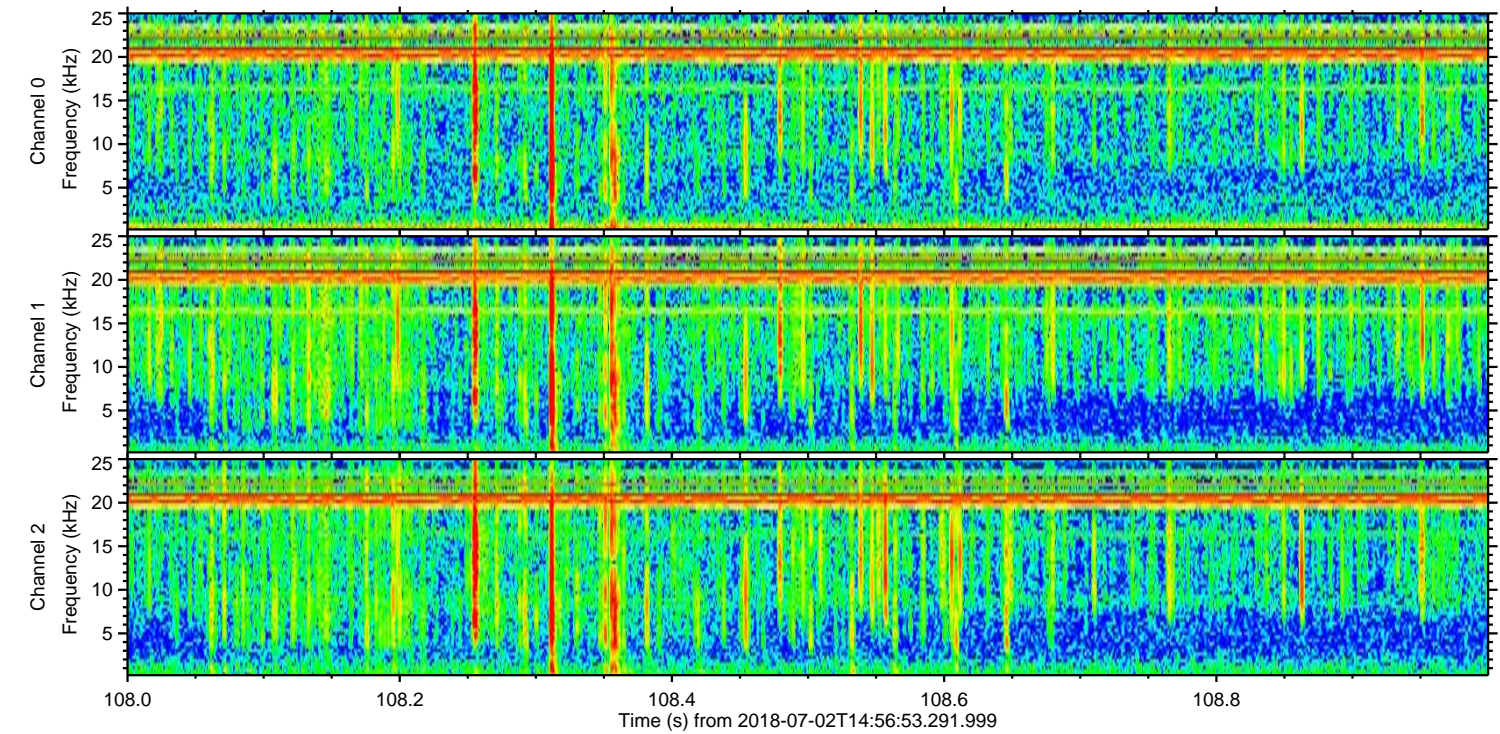
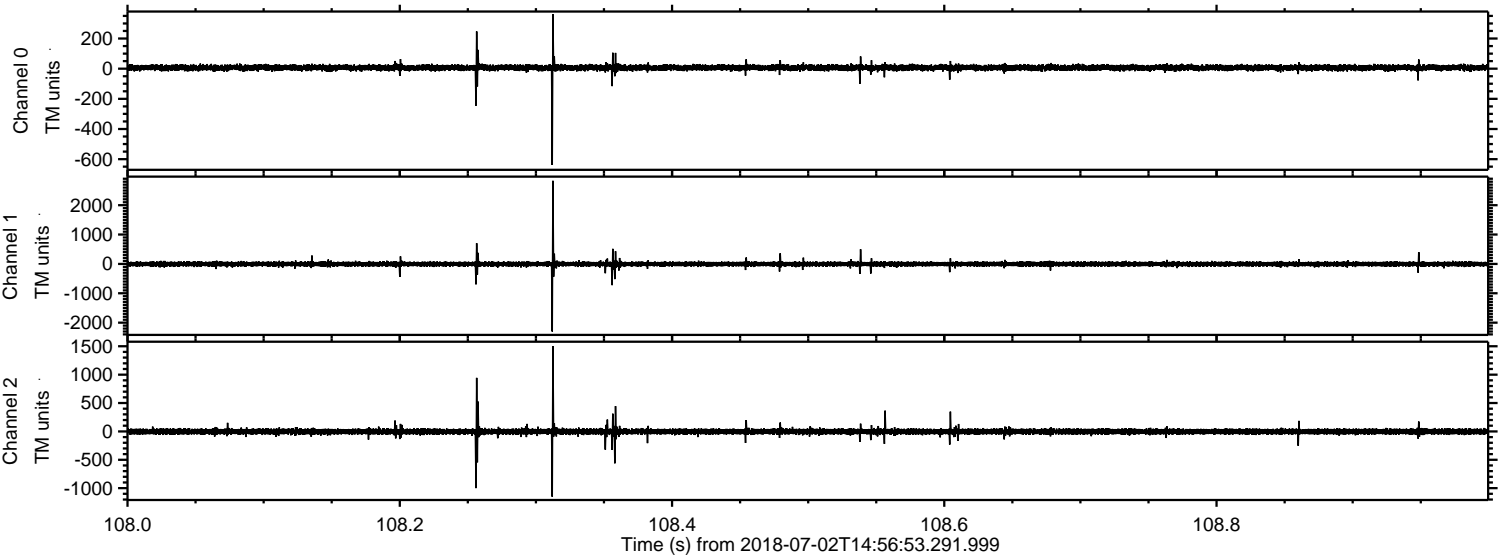


ELMAVAN 3D WAVEFORMS (Measured data sampled at 50 kHz) 51000 packets of 144 samples from 2018-07-02T14:56:53.291.999. Part 104/147

Processed Mon Jul 2 17:04:40 2018 by ELM ver.2012-10-06 from 001__elm20180702_145652__dat00.bin

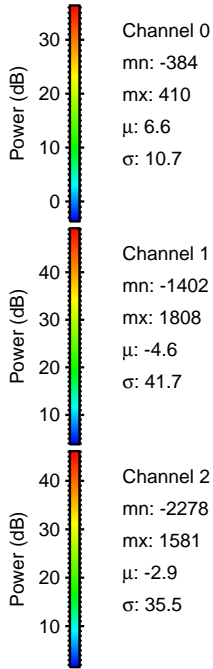
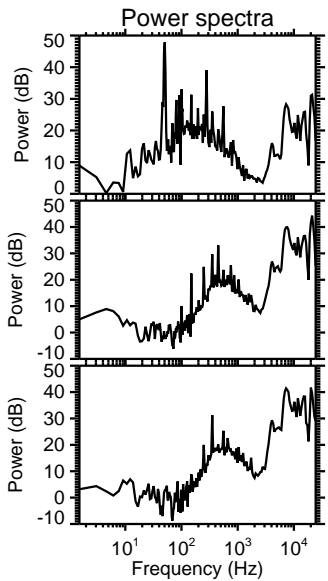
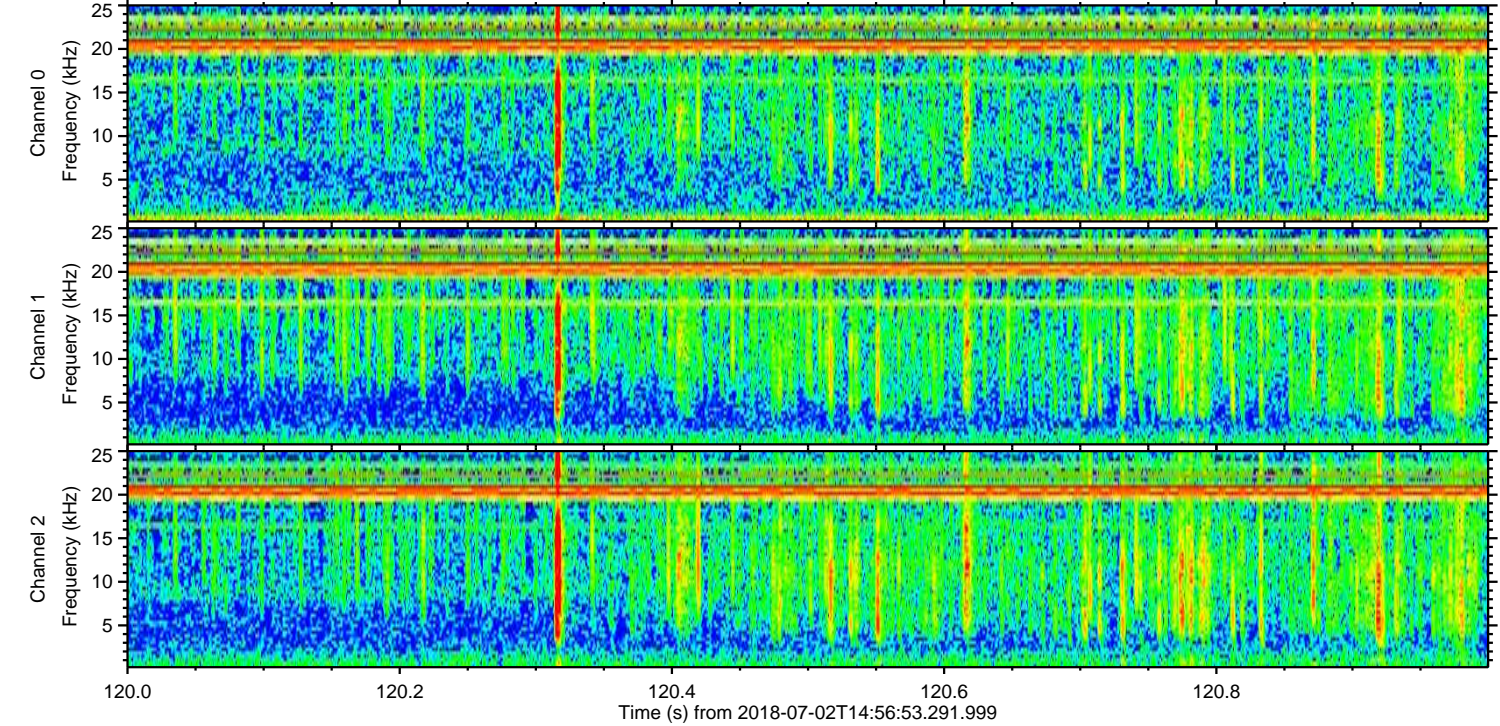
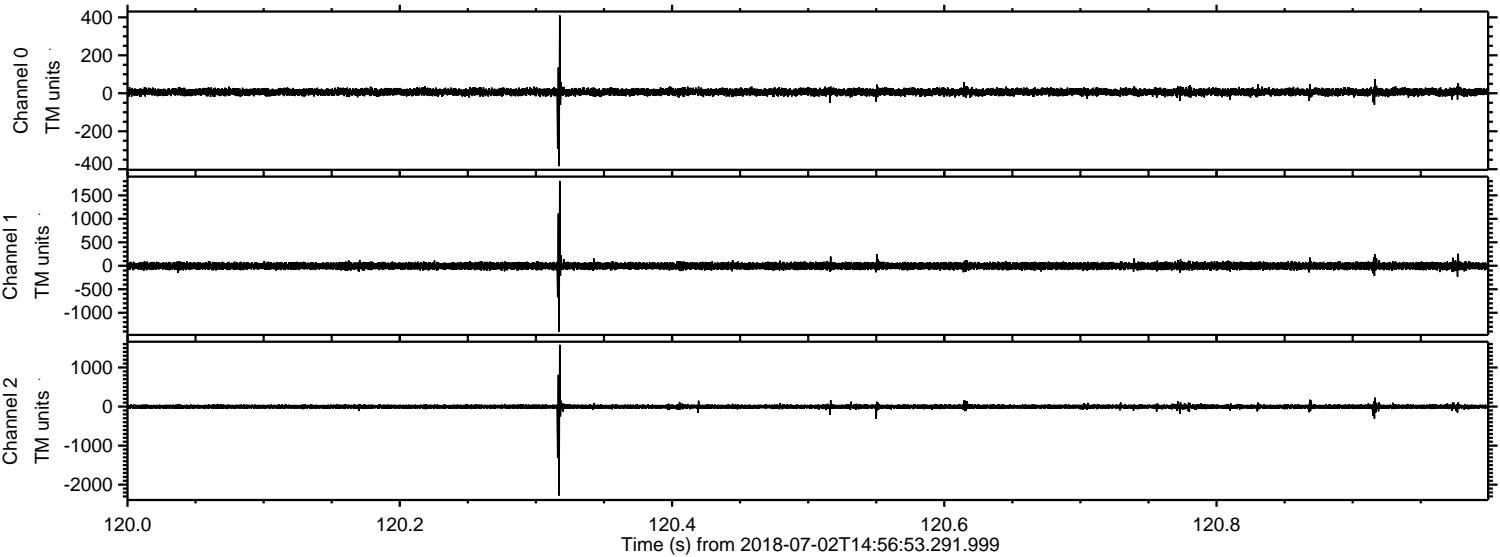


Processed Mon Jul 2 17:04:40 2018 by ELM ver.2012-10-06 from 001__elm20180702_145652__dat00.bin

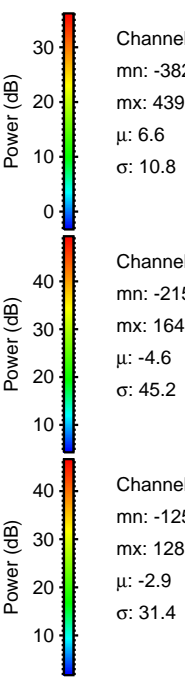
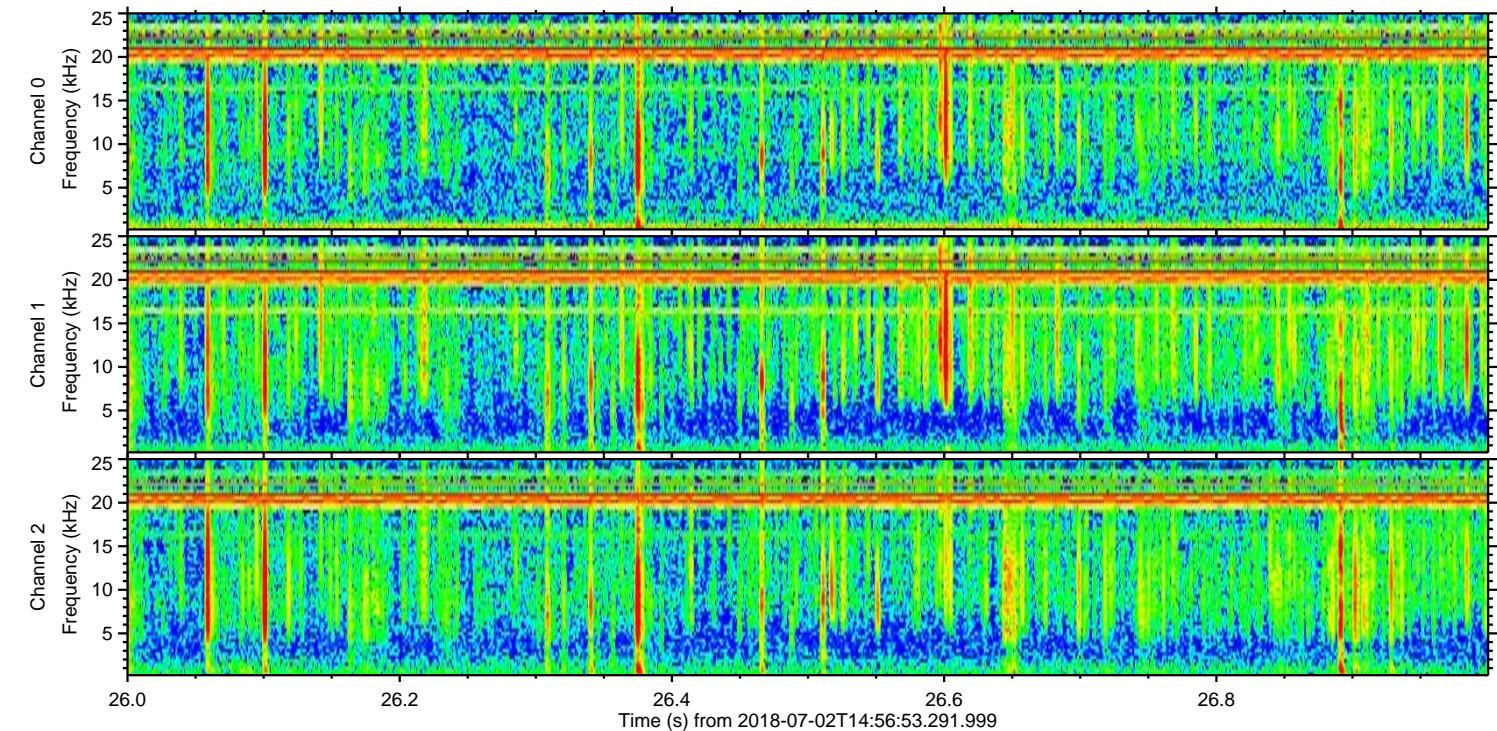
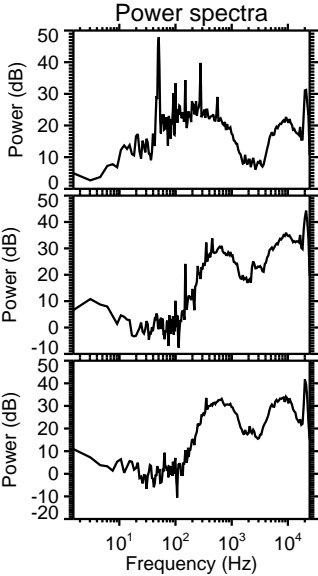
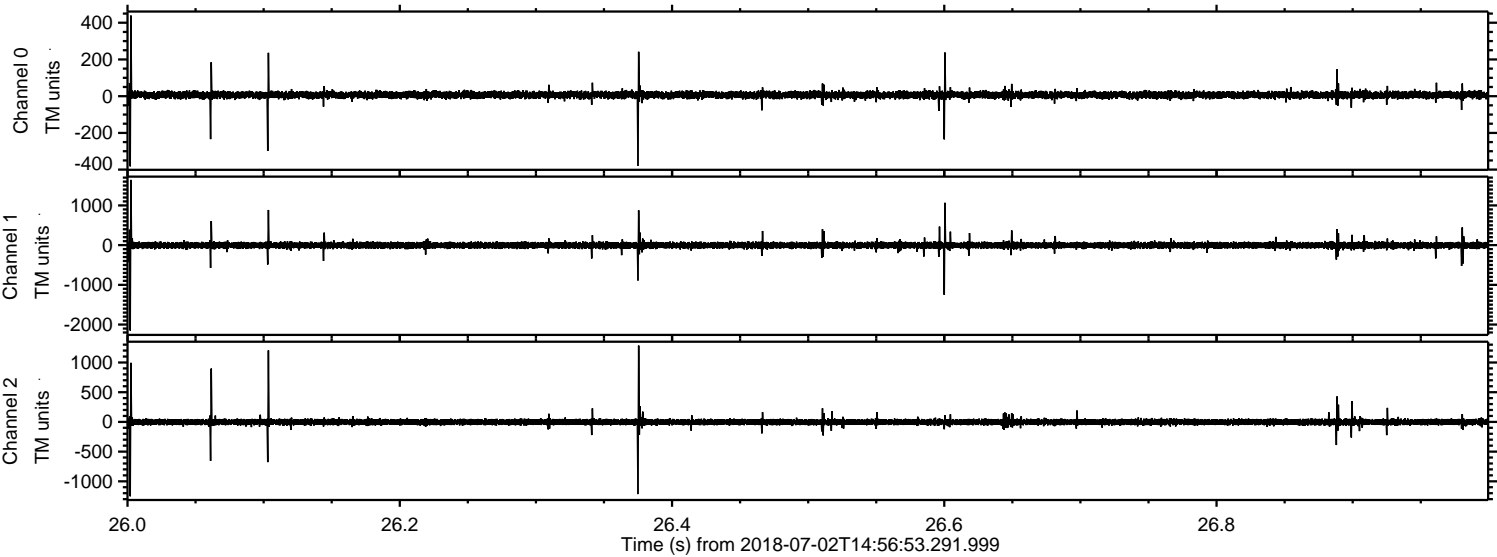


ELMAVAN 3D WAVEFORMS (Measured data sampled at 50 kHz) 51000 packets of 144 samples from 2018-07-02T14:56:53.291.999. Part 121/147

Processed Mon Jul 2 17:04:41 2018 by ELM ver.2012-10-06 from 001__elm20180702_145652__dat00.bin



Processed Mon Jul 2 17:04:42 2018 by ELM ver.2012-10-06 from 001__elm20180702_145652__dat00.bin



Channel 0
mn: -382
mx: 439
 μ : 6.6
 σ : 10.8

Channel 1
mn: -2153
mx: 1643
 μ : -4.6
 σ : 45.2

Channel 2
mn: -1252
mx: 1285
 μ : -2.9
 σ : 31.4

Processed Mon Jul 2 17:04:43 2018 by ELM ver.2012-10-06 from 001__elm20180702_145652__dat00.bin

