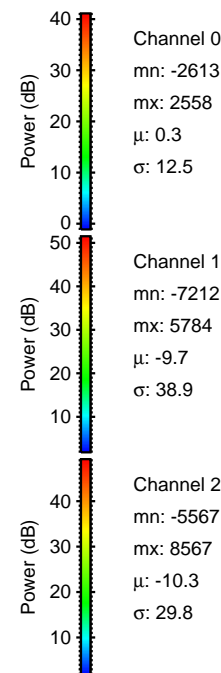
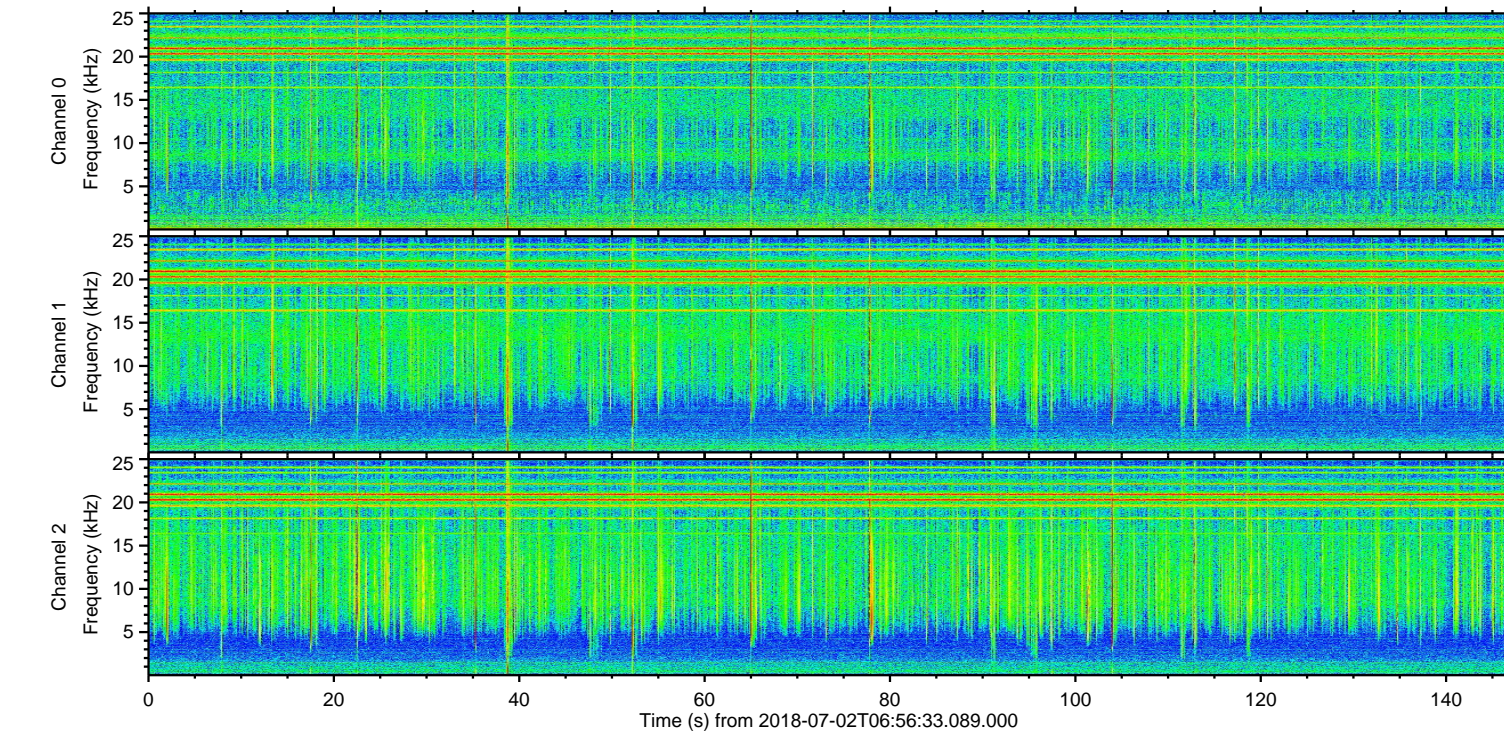
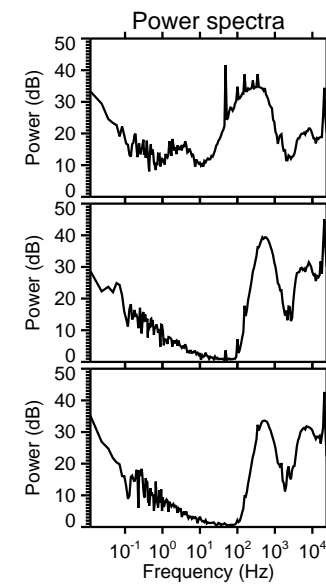
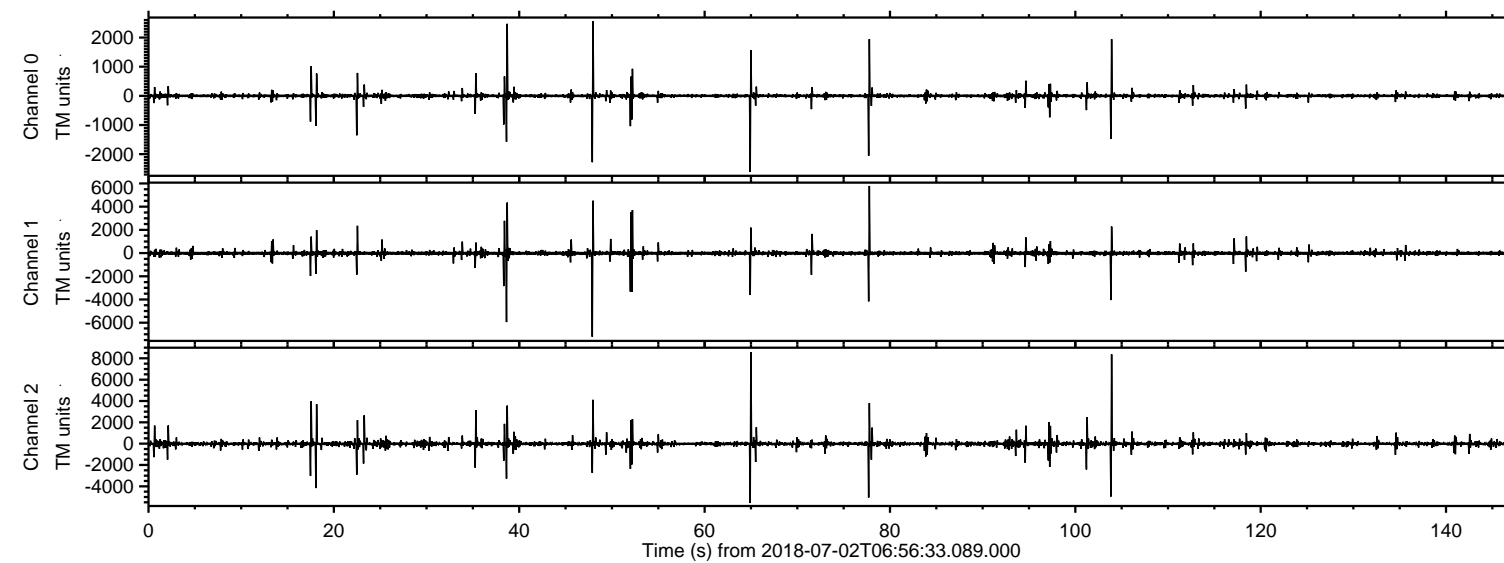
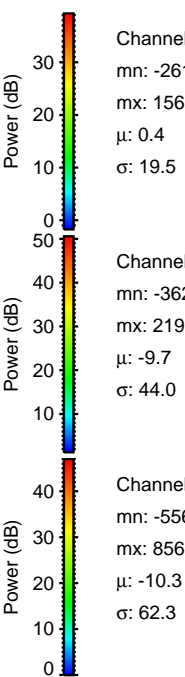
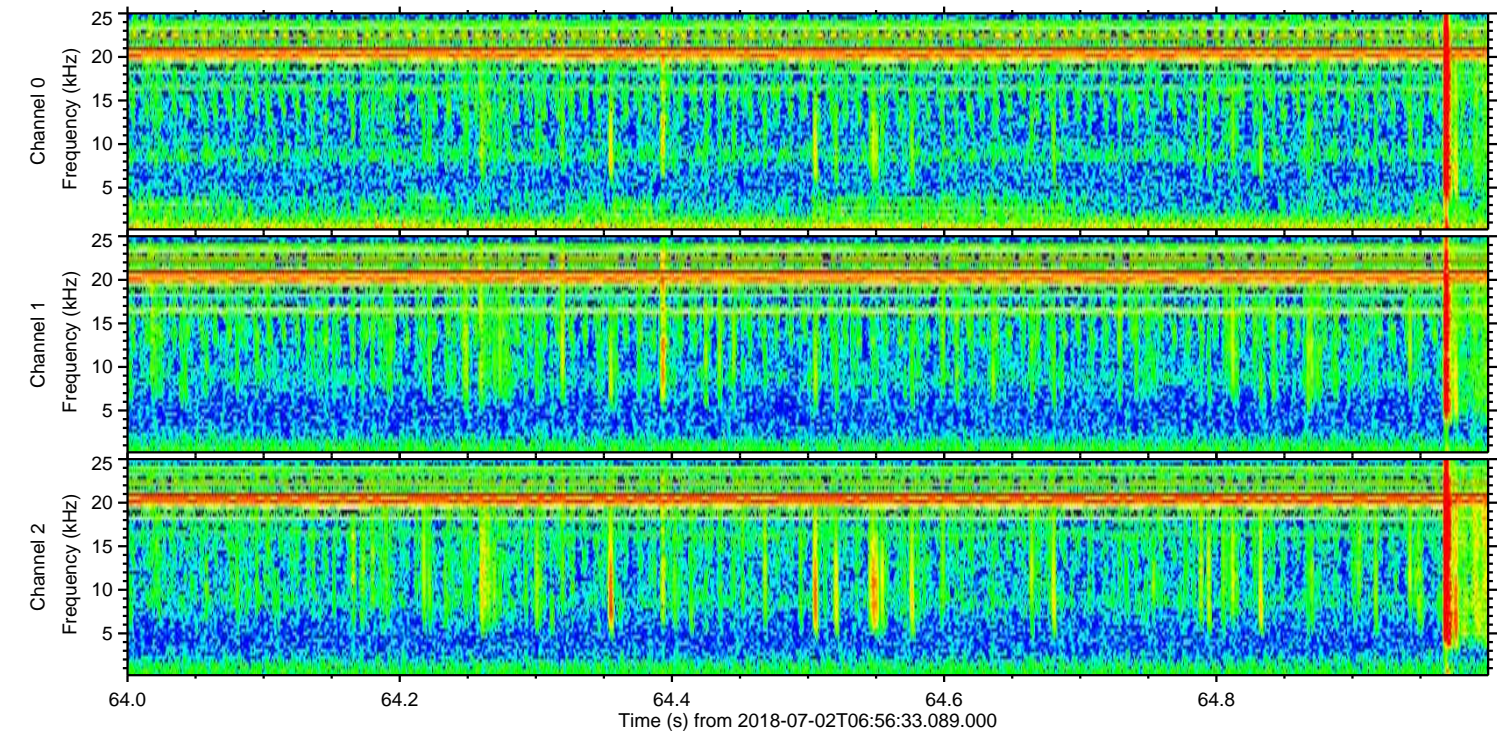
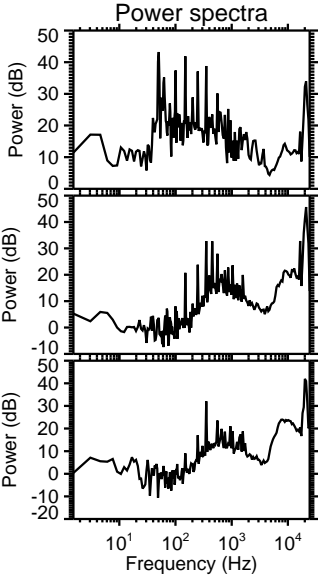
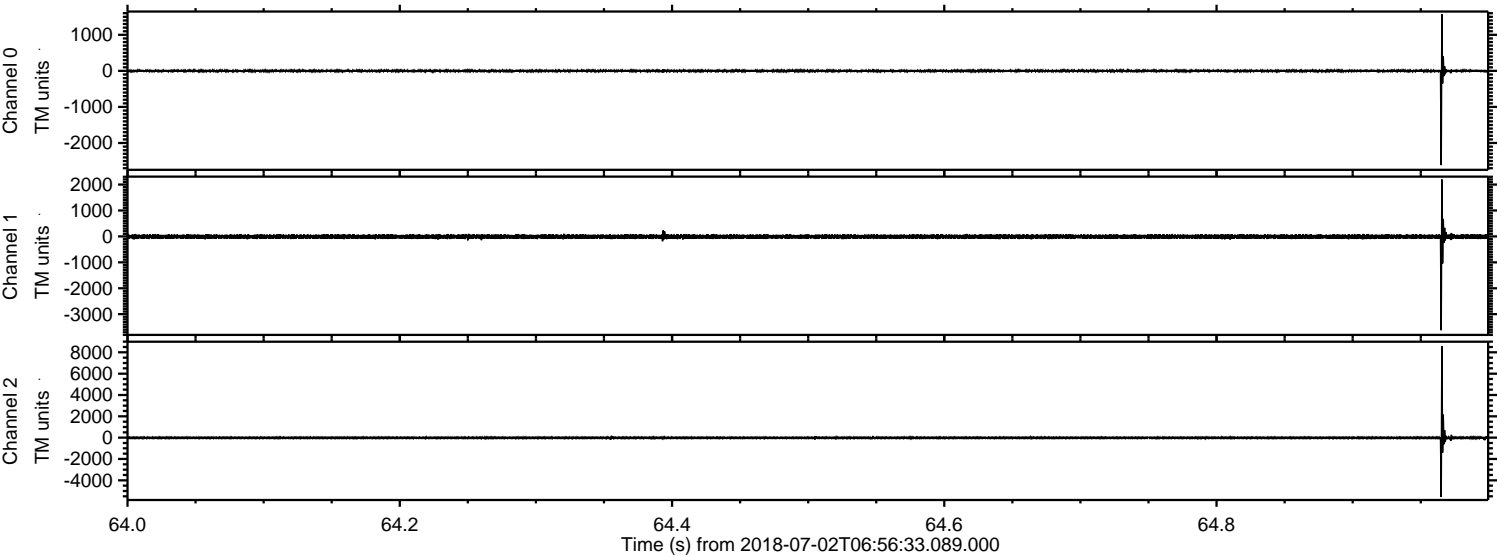


ELMAVAN 3D WAVEFORMS (Measured data sampled at 50 kHz) 51000 packets of 144 samples from 2018-07-02T06:56:33.089.000.

Processed Mon Jul 2 09:04:16 2018 by ELM ver.2012-10-06 from 001__elm20180702_065632__dat00.bin

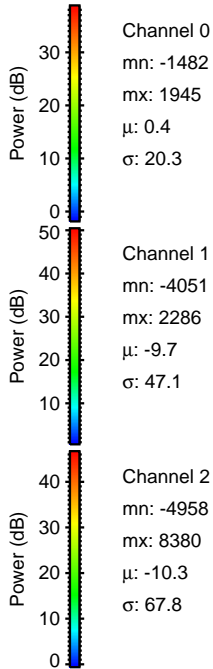
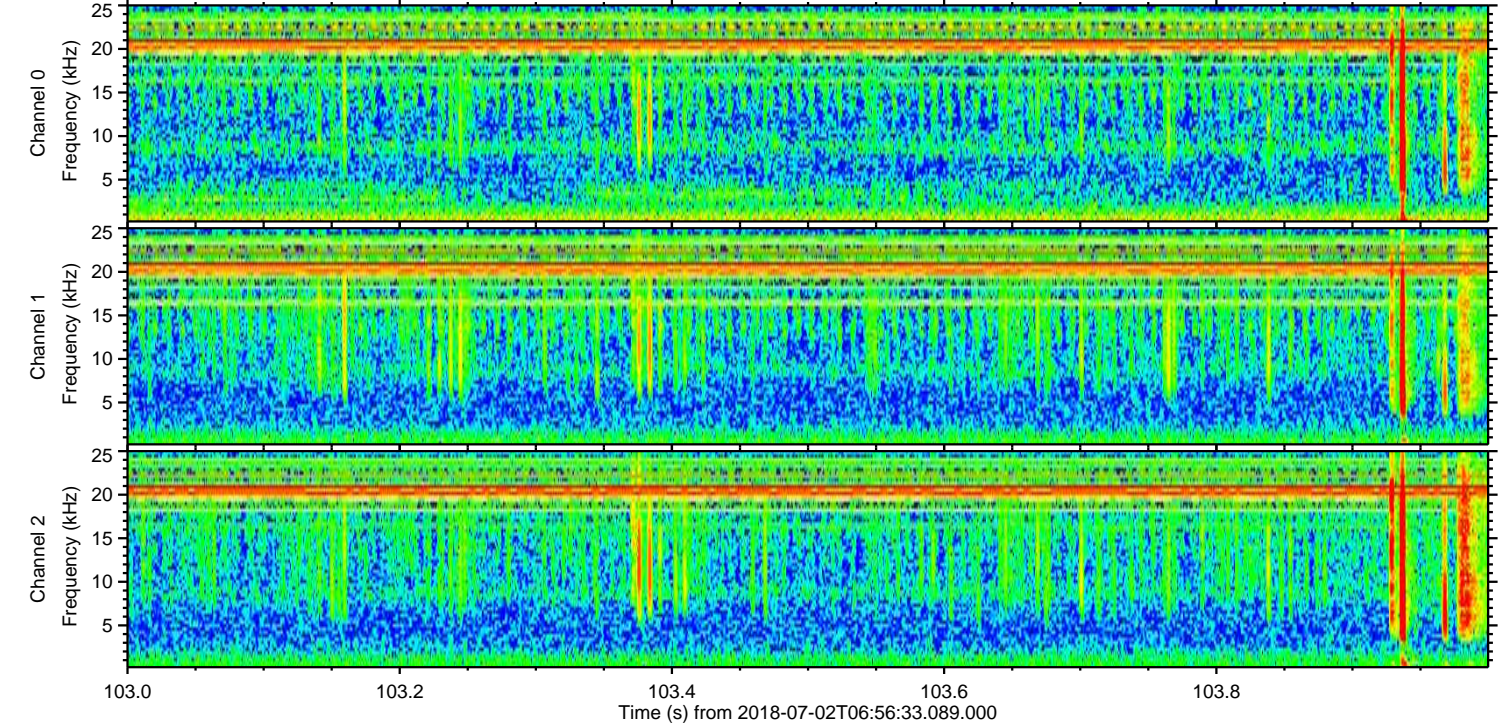
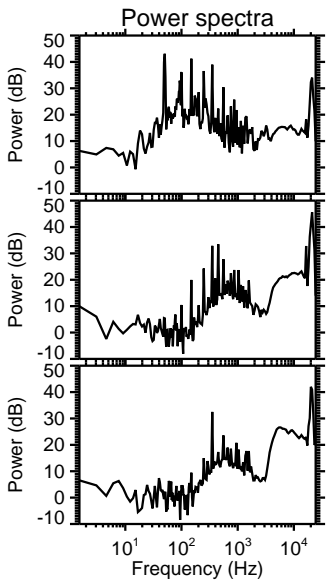
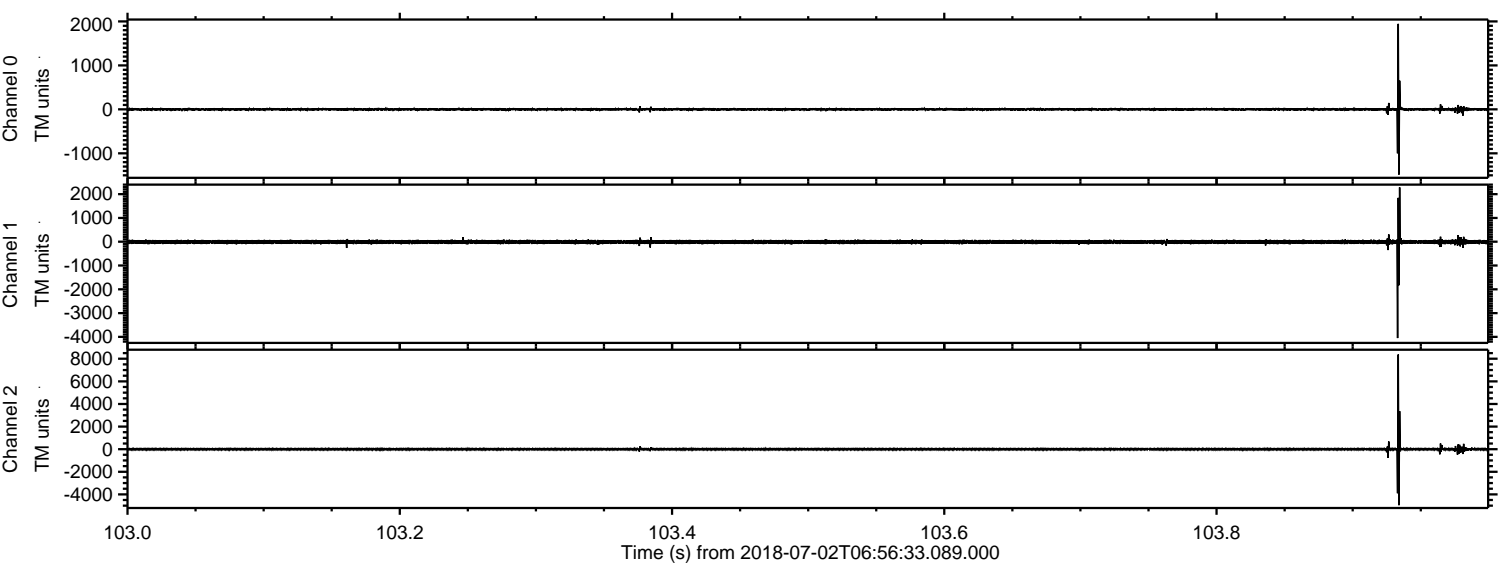


Processed Mon Jul 2 09:04:22 2018 by ELM ver.2012-10-06 from 001__elm20180702_065632__dat00.bin

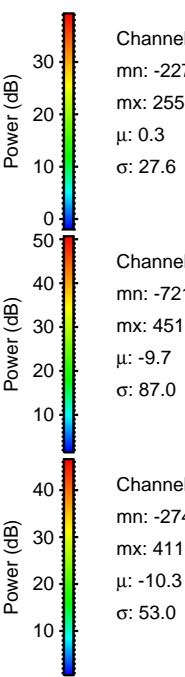
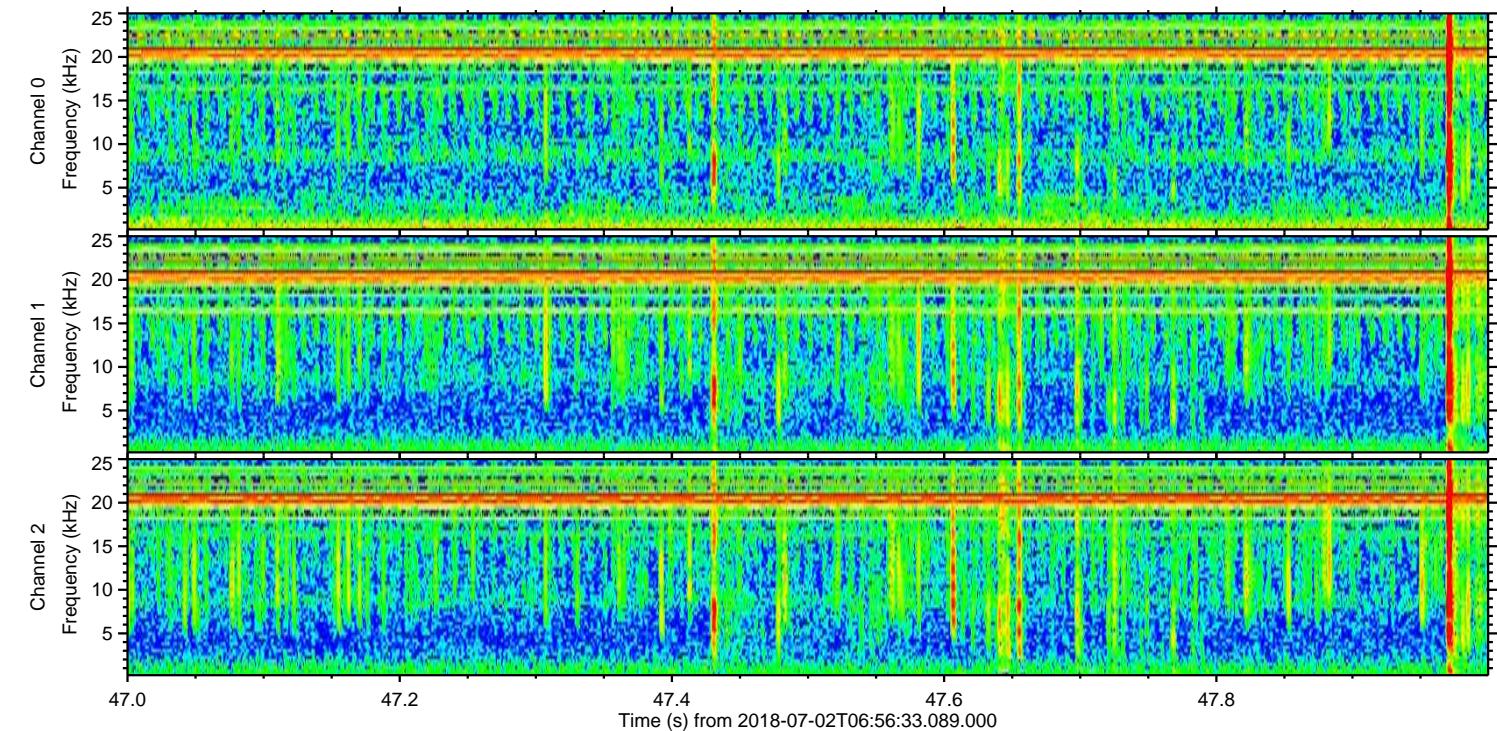
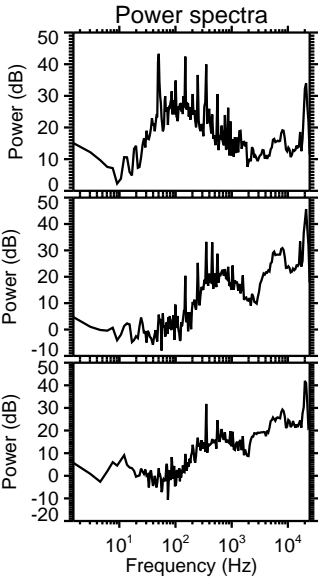
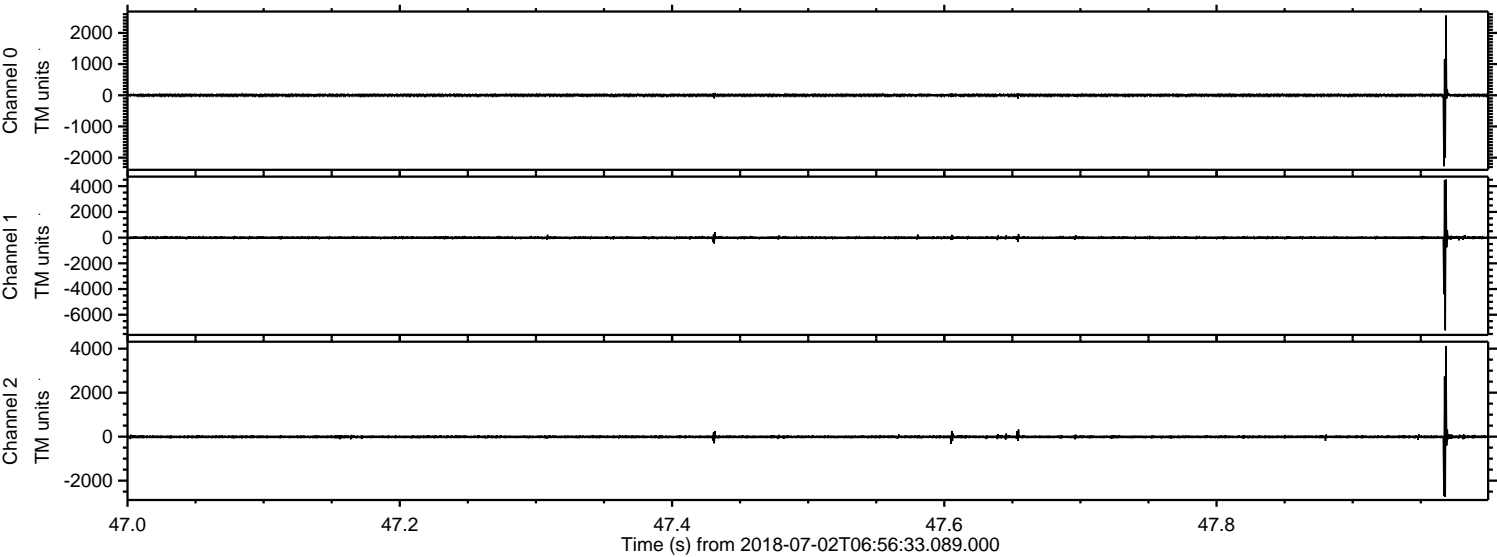


ELMAVAN 3D WAVEFORMS (Measured data sampled at 50 kHz) 51000 packets of 144 samples from 2018-07-02T06:56:33.089.000. Part 104/147

Processed Mon Jul 2 09:04:22 2018 by ELM ver.2012-10-06 from 001__elm20180702_065632__dat00.bin



Processed Mon Jul 2 09:04:23 2018 by ELM ver.2012-10-06 from 001__elm20180702_065632__dat00.bin

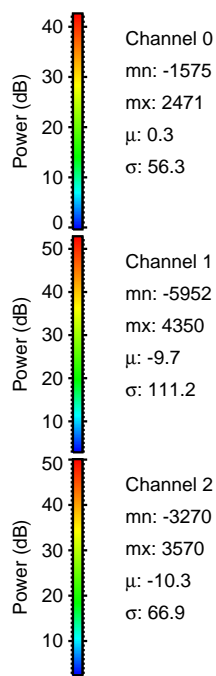
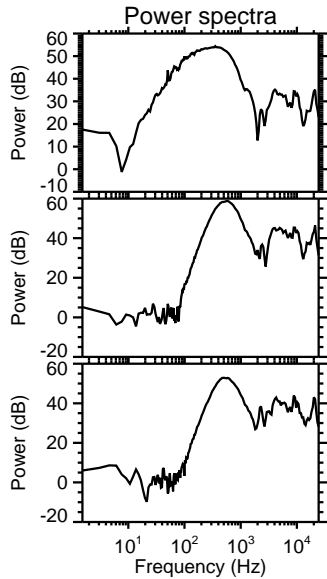
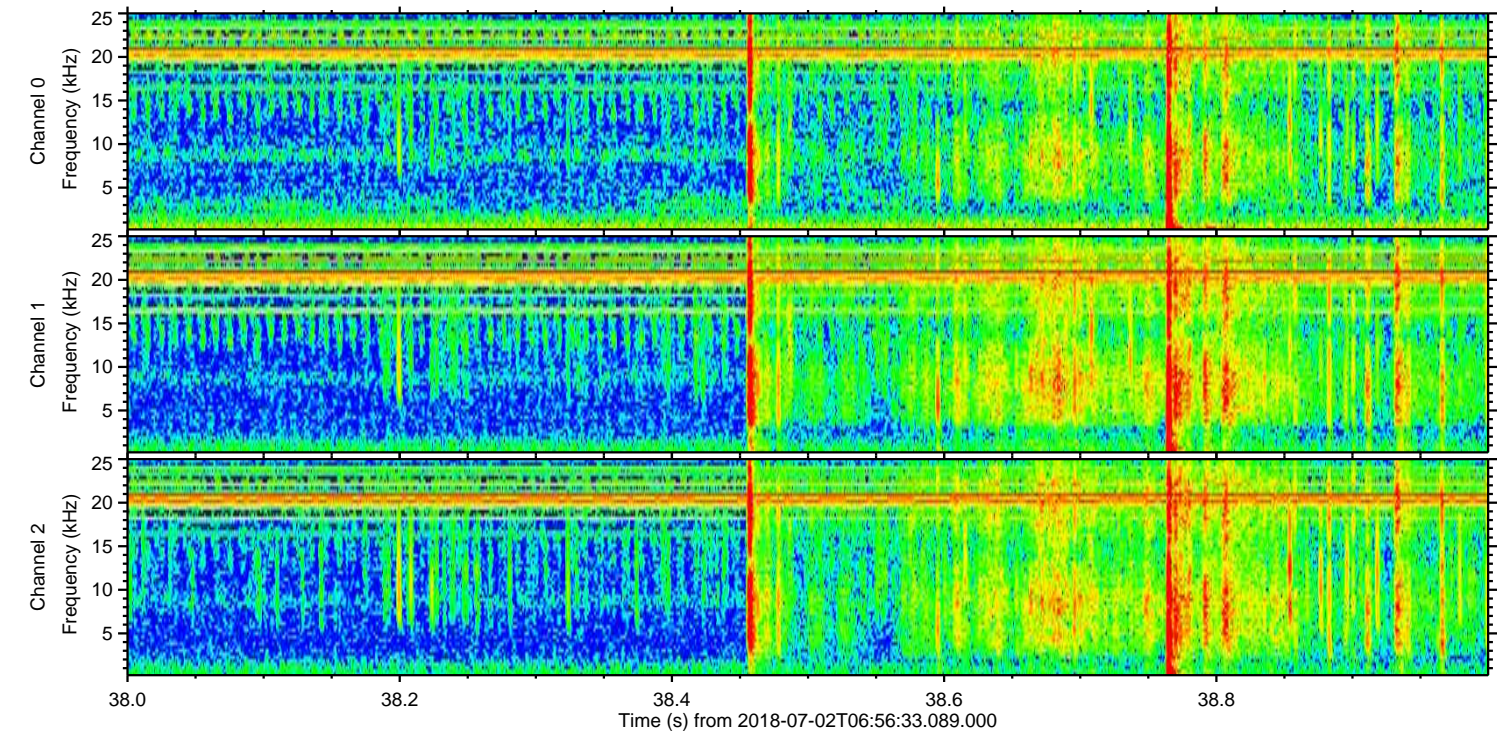
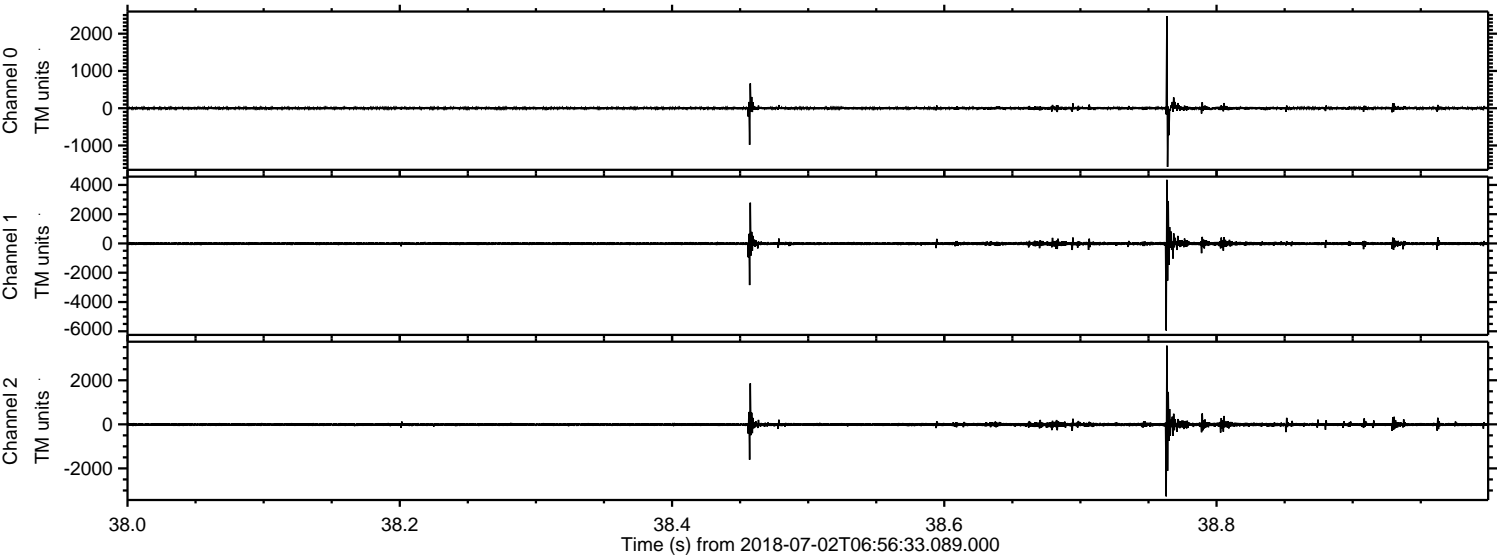


Channel 0
mn: -2277
mx: 2558
μ: 0.3
σ: 27.6

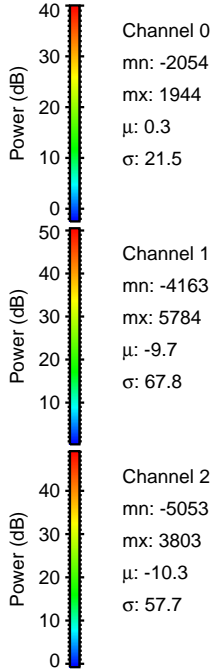
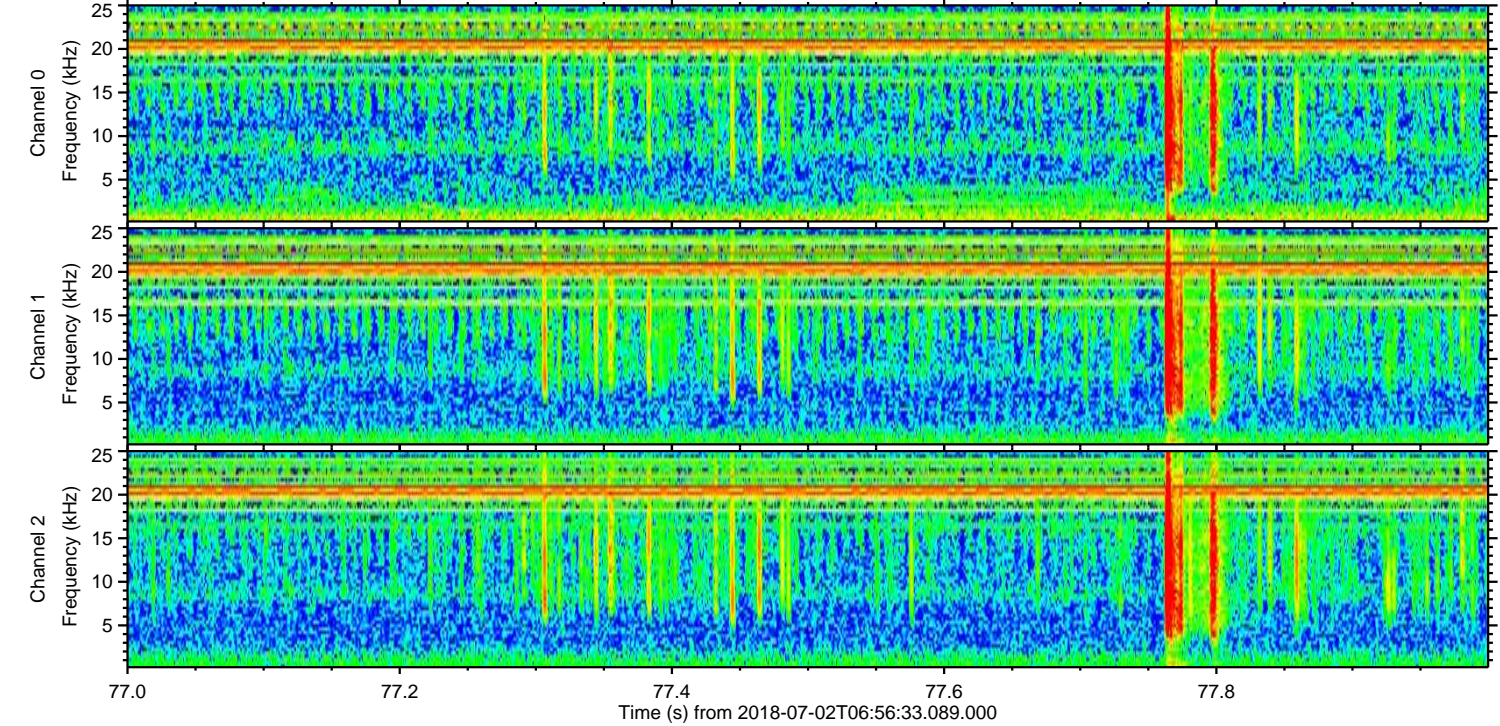
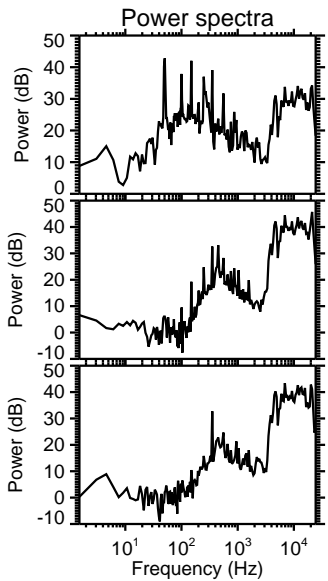
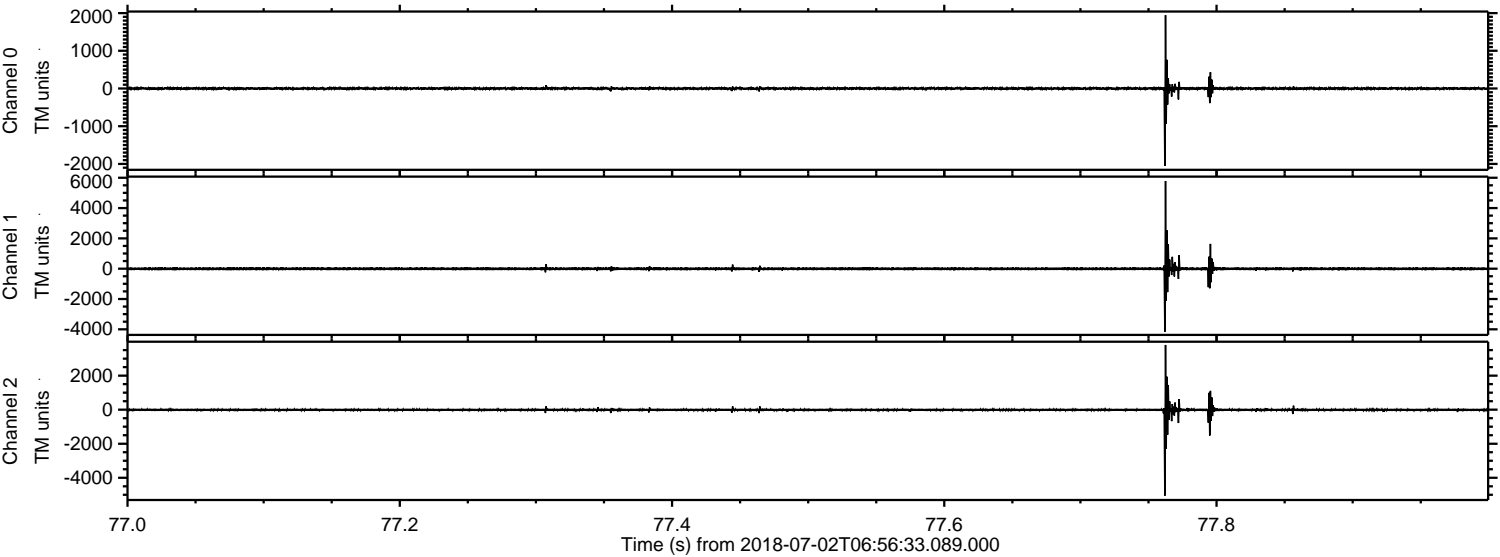
Channel 1
mn: -7212
mx: 4518
μ: -9.7
σ: 87.0

Channel 2
mn: -2743
mx: 4110
μ: -10.3
σ: 53.0

Processed Mon Jul 2 09:04:24 2018 by ELM ver.2012-10-06 from 001__elm20180702_065632__dat00.bin



Processed Mon Jul 2 09:04:24 2018 by ELM ver.2012-10-06 from 001__elm20180702_065632__dat00.bin

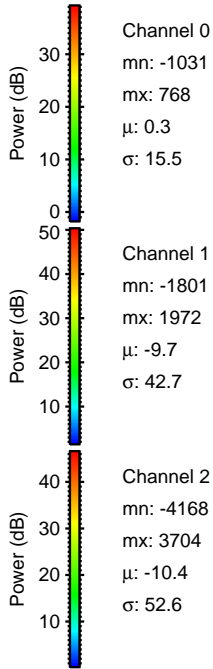
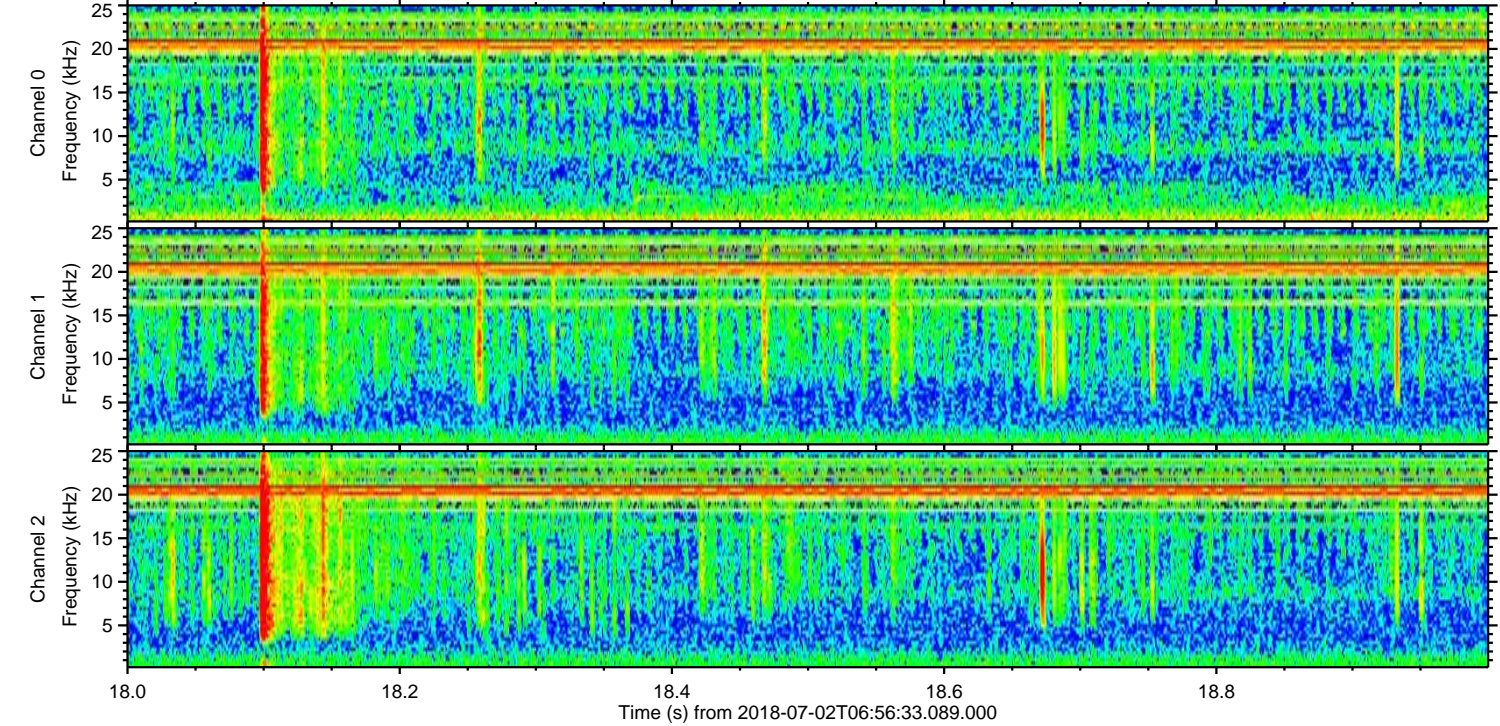
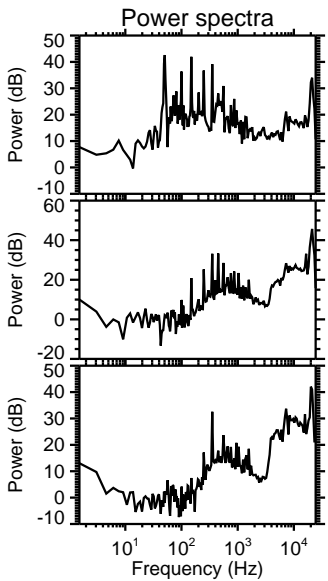
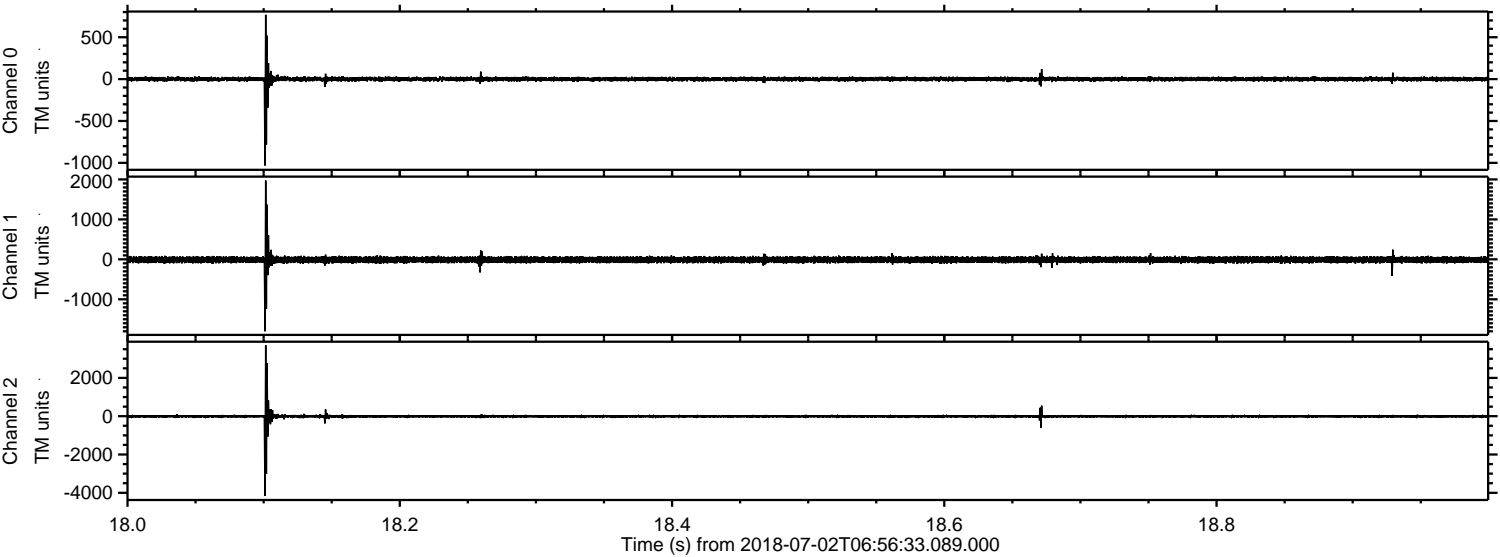


Channel 0
mn: -2054
mx: 1944
 μ : 0.3
 σ : 21.5

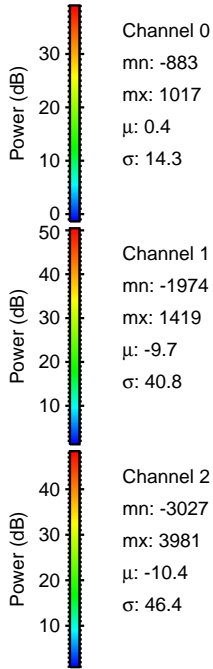
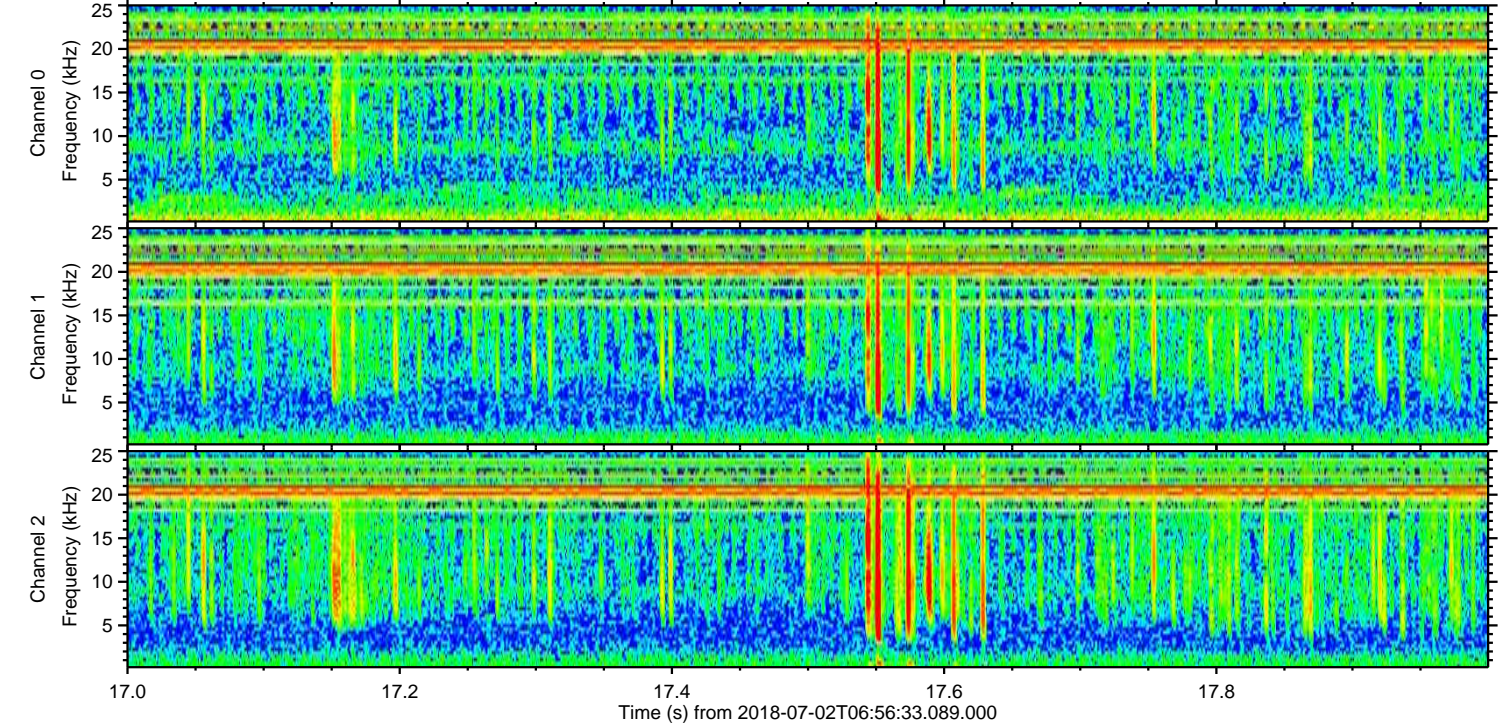
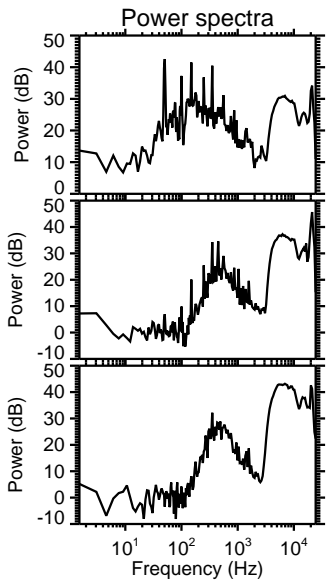
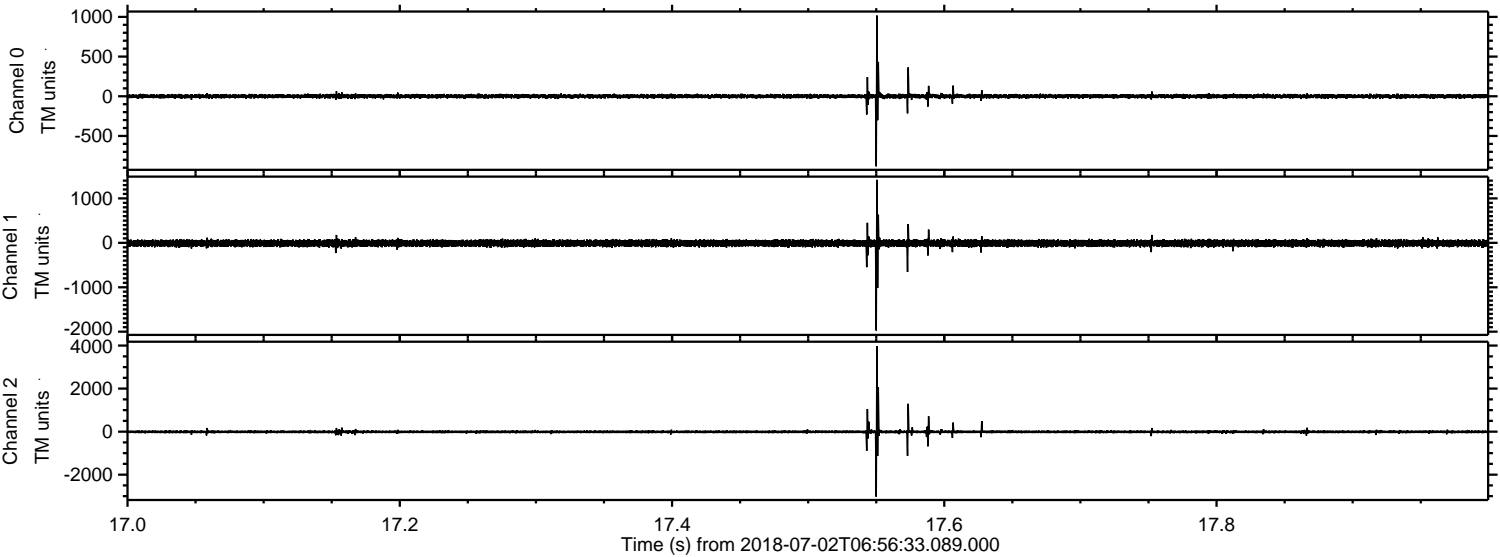
Channel 1
mn: -4163
mx: 5784
 μ : -9.7
 σ : 67.8

Channel 2
mn: -5053
mx: 3803
 μ : -10.3
 σ : 57.7

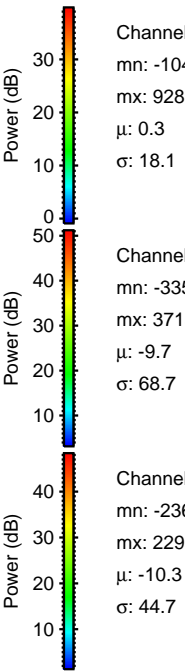
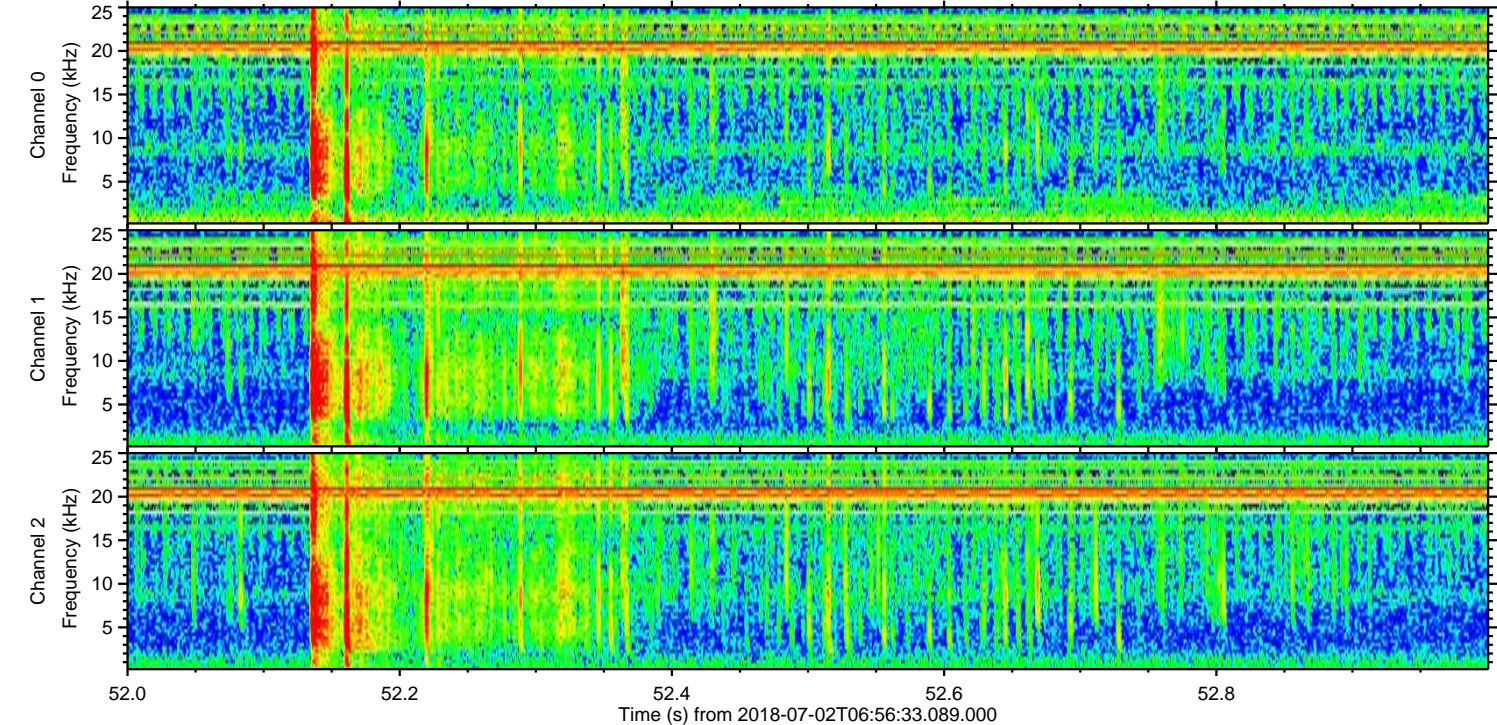
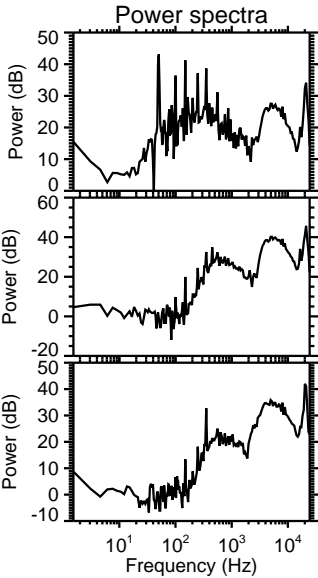
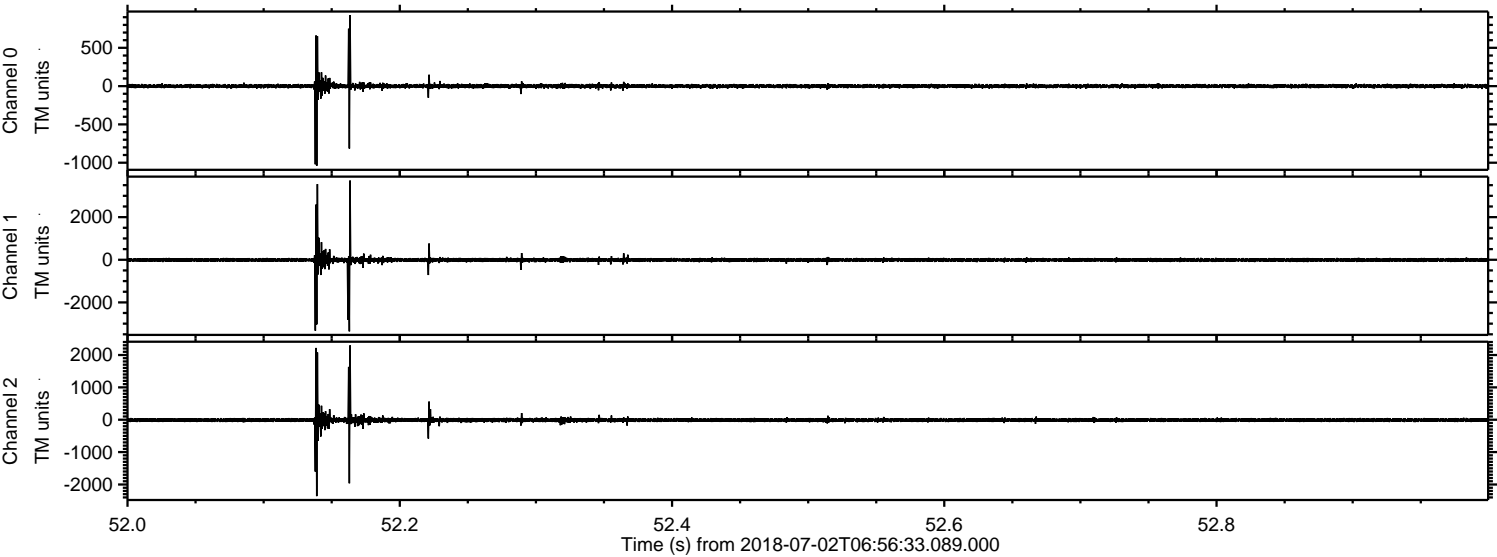
Processed Mon Jul 2 09:04:25 2018 by ELM ver.2012-10-06 from 001__elm20180702_065632__dat00.bin



Processed Mon Jul 2 09:04:26 2018 by ELM ver.2012-10-06 from 001__elm20180702_065632__dat00.bin



Processed Mon Jul 2 09:04:26 2018 by ELM ver.2012-10-06 from 001__elm20180702_065632__dat00.bin



Channel 0
mn: -1041
mx: 928
 μ : 0.3
 σ : 18.1

Channel 1
mn: -3359
mx: 3715
 μ : -9.7
 σ : 68.7

Channel 2
mn: -2361
mx: 2295
 μ : -10.3
 σ : 44.7

Processed Mon Jul 2 09:04:27 2018 by ELM ver.2012-10-06 from 001__elm20180702_065632__dat00.bin

