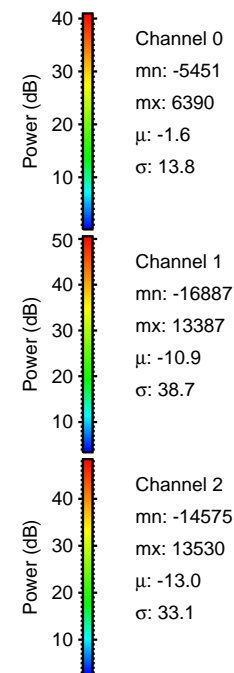
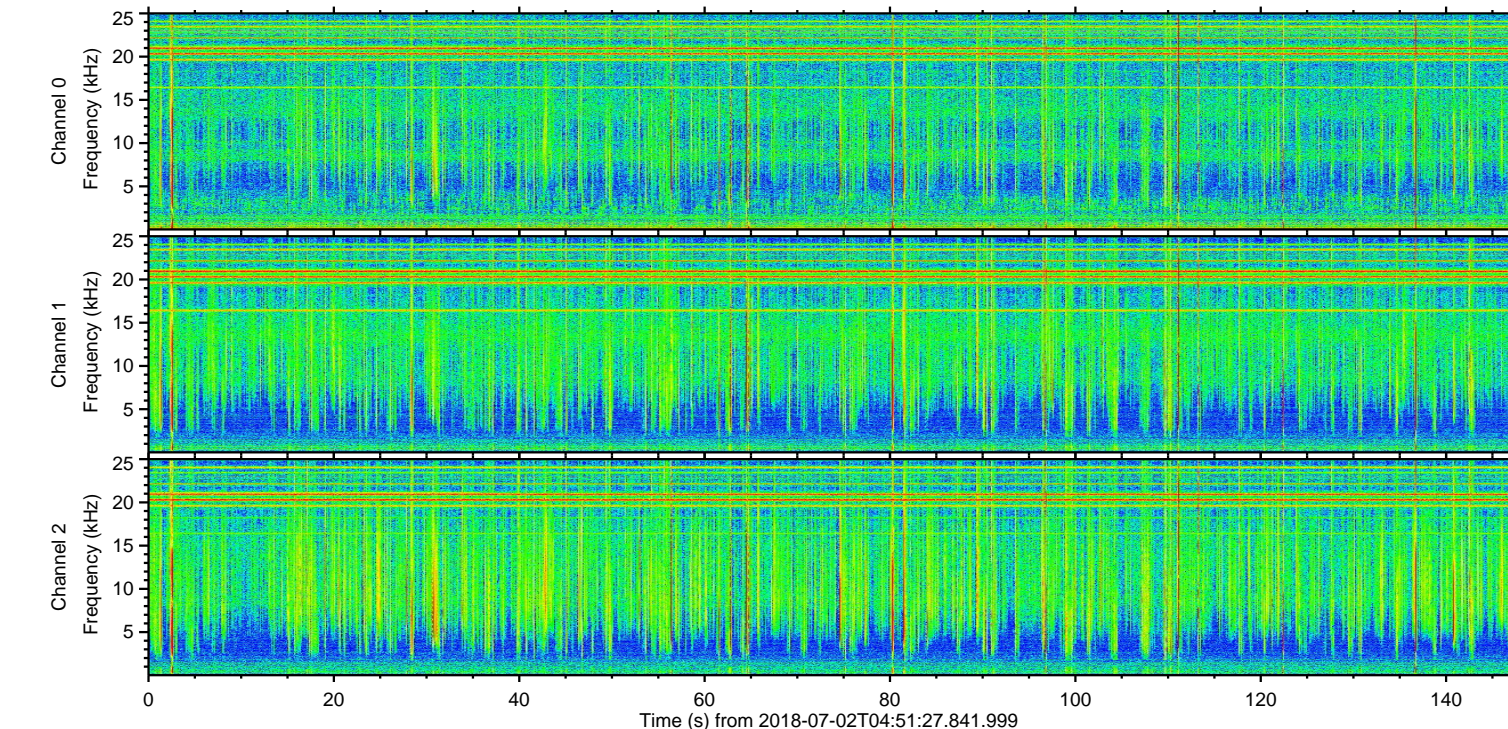
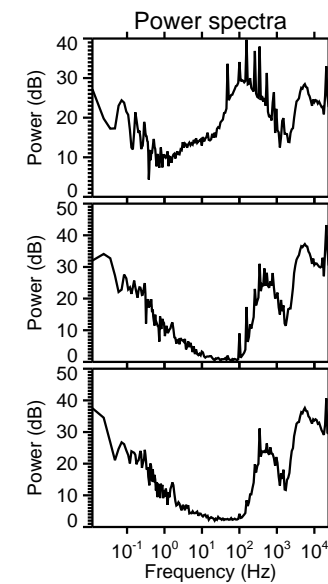
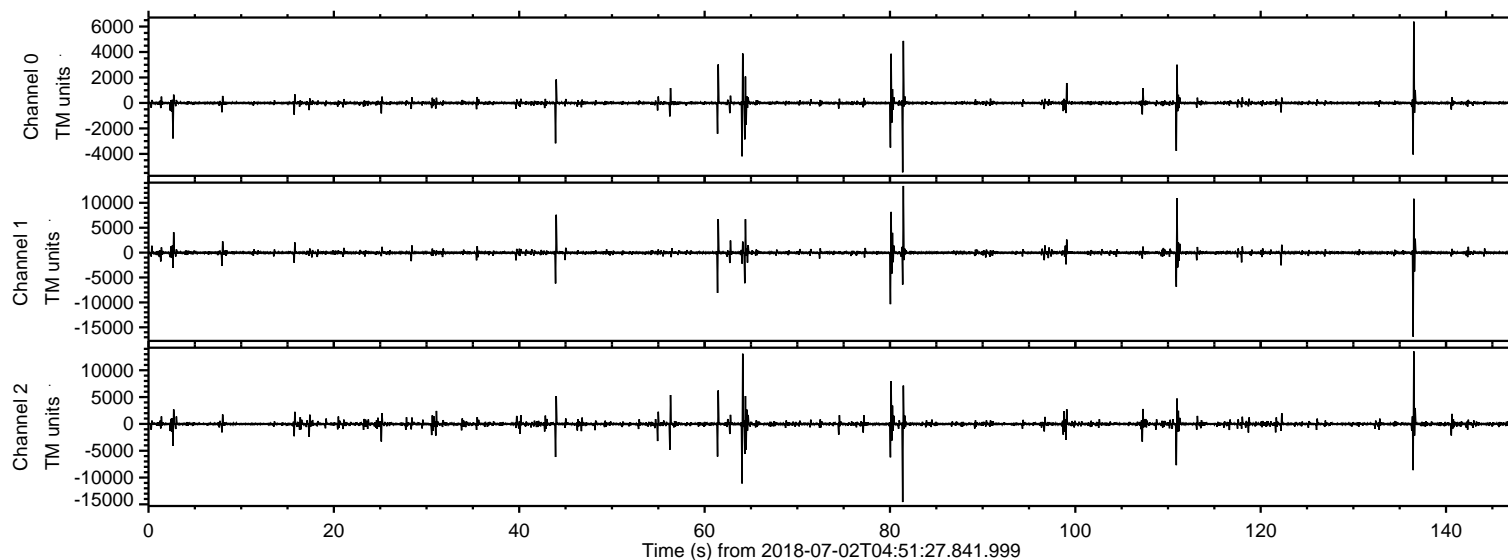


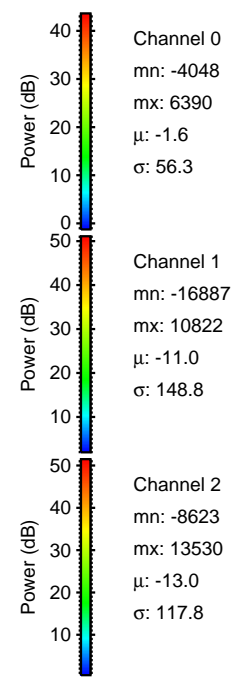
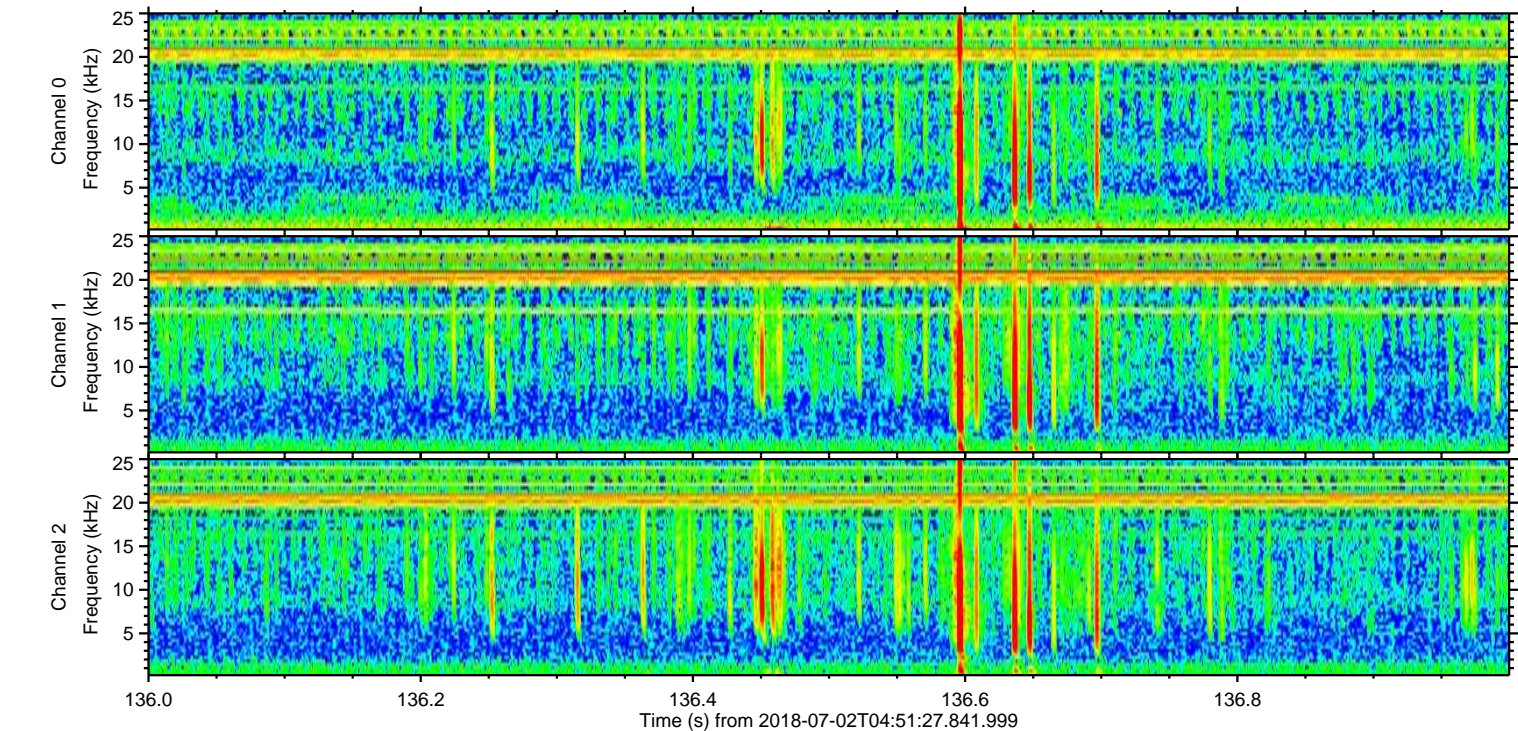
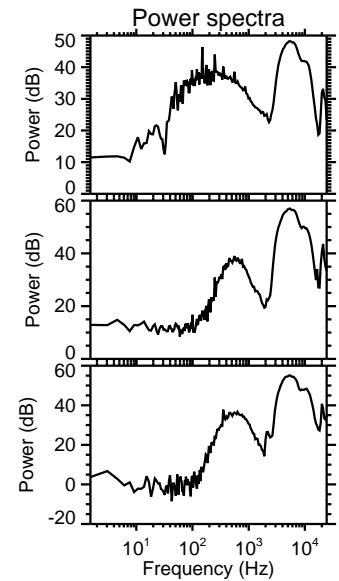
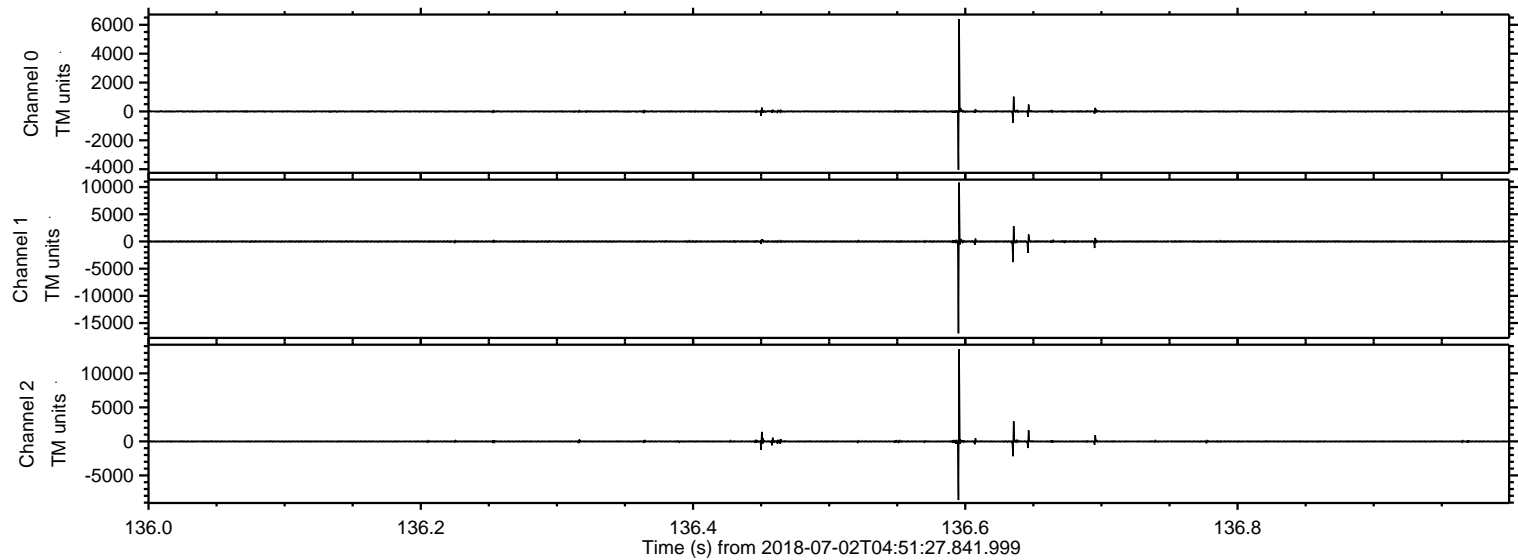
ELMAVAN 3D WAVEFORMS (Measured data sampled at 50 kHz) 51000 packets of 144 samples from 2018-07-02T04:51:27.841.999.

Processed Mon Jul 2 06:59:45 2018 by ELM ver.2012-10-06 from 001__elm20180702_045126__dat00.bin

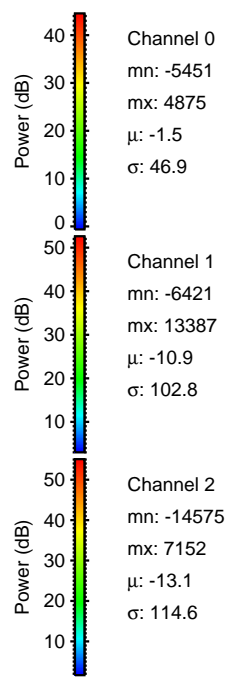
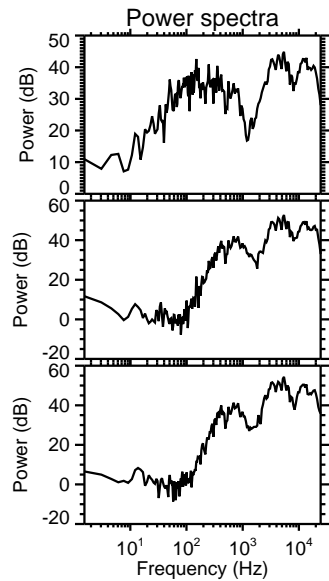
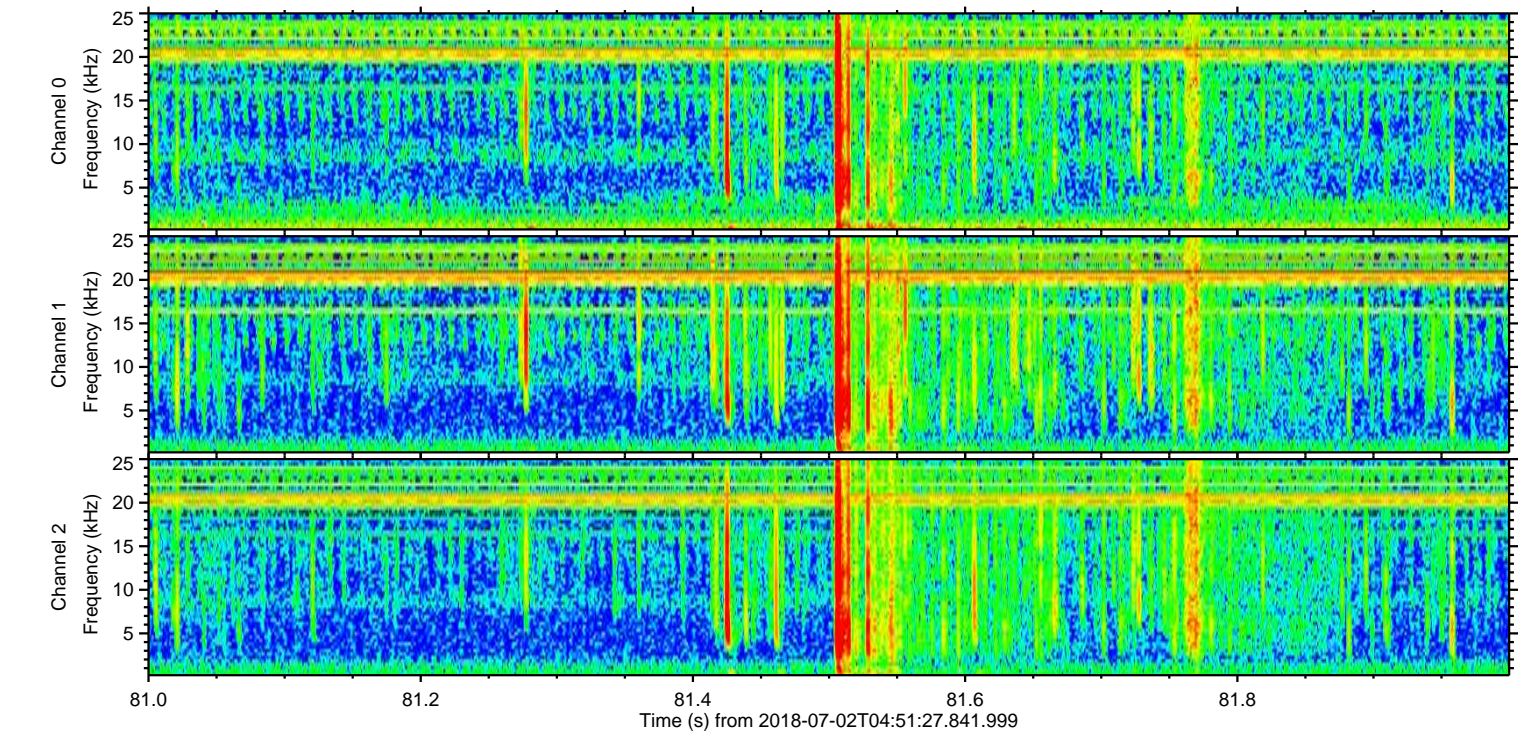
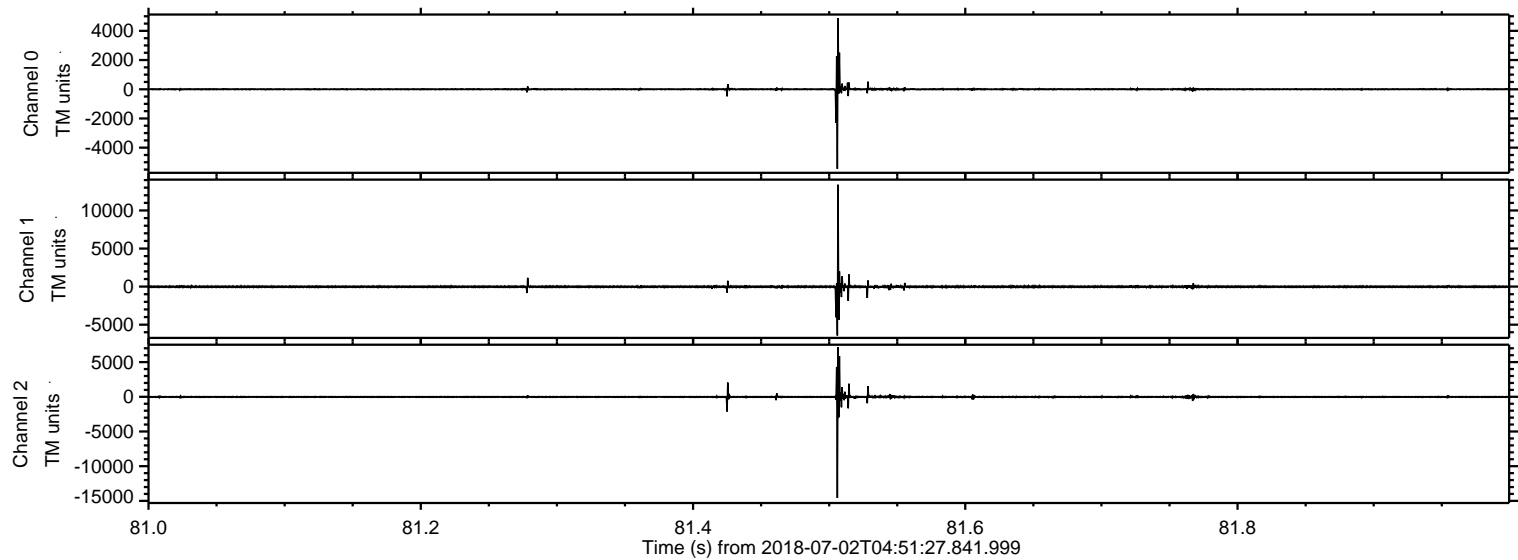


ELMAVAN 3D WAVEFORMS (Measured data sampled at 50 kHz) 51000 packets of 144 samples from 2018-07-02T04:51:27.841.999. Part 137/147

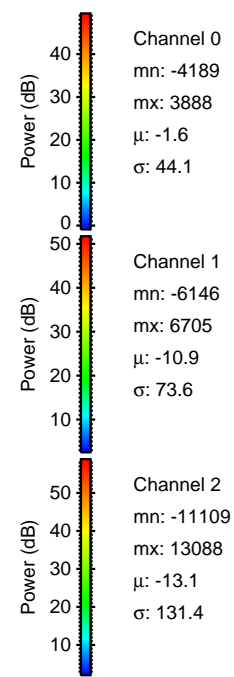
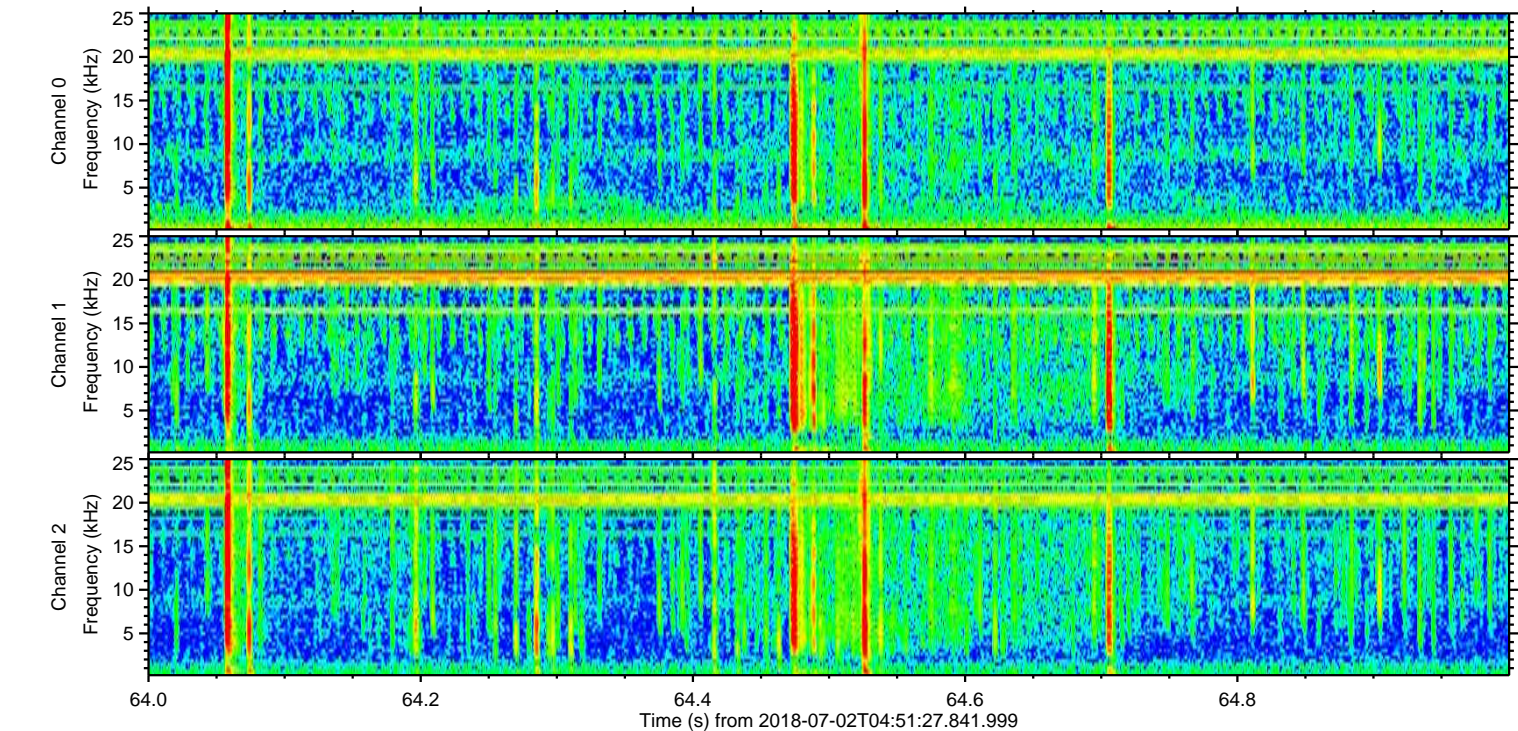
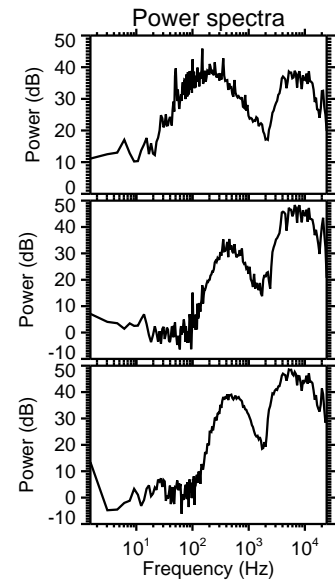
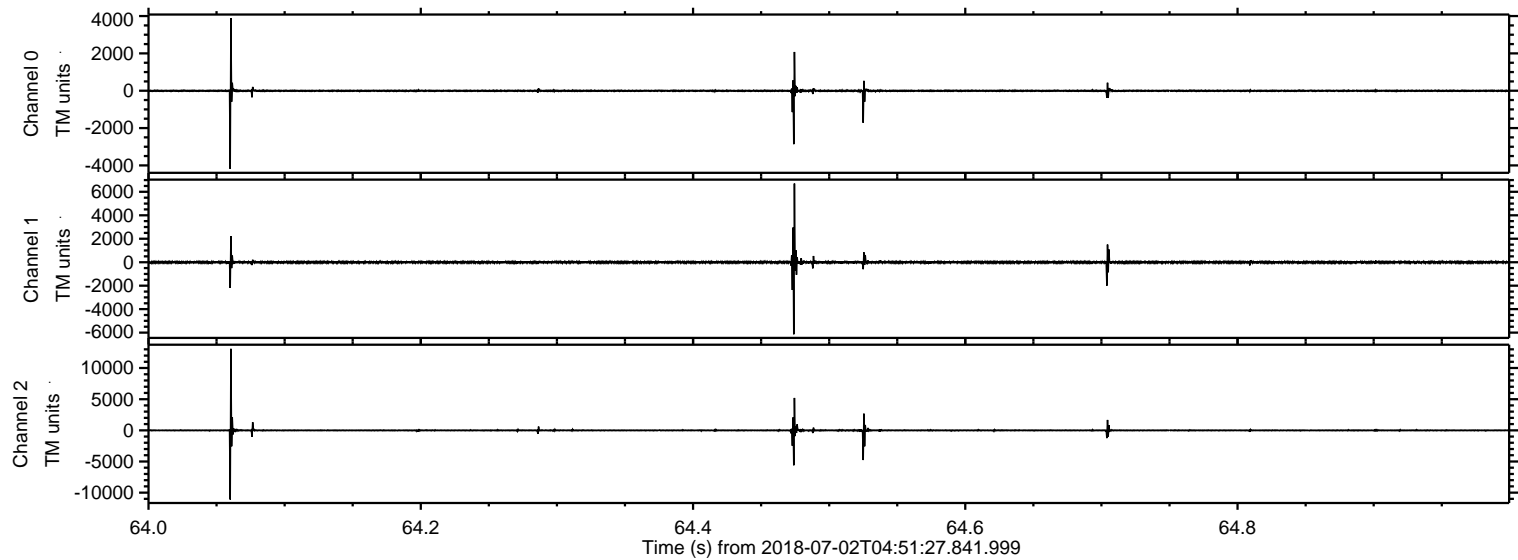
Processed Mon Jul 2 06:59:51 2018 by ELM ver.2012-10-06 from 001__elm20180702_045126__dat00.bin



Processed Mon Jul 2 06:59:52 2018 by ELM ver.2012-10-06 from 001__elm20180702_045126__dat00.bin

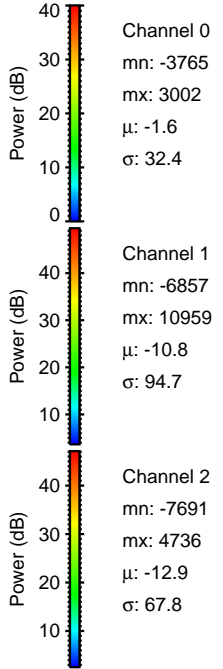
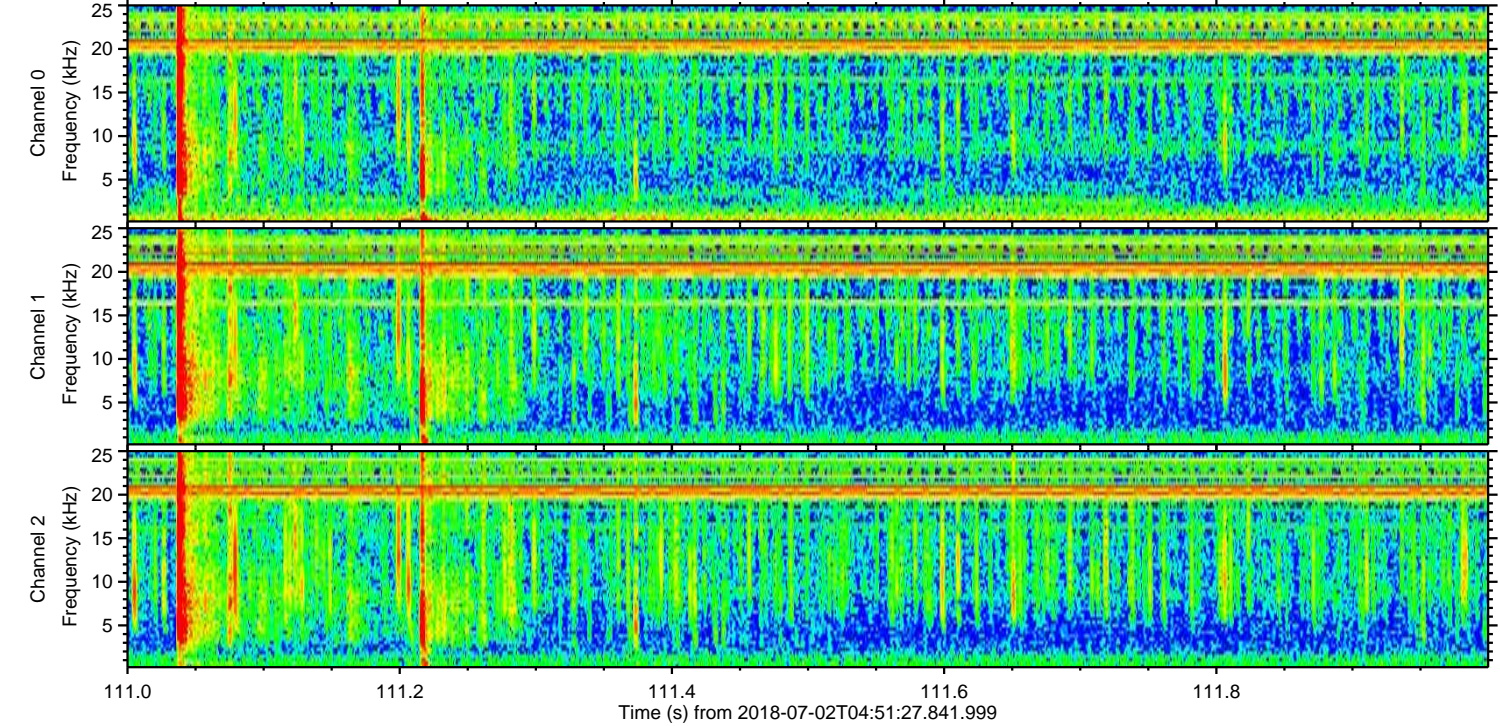
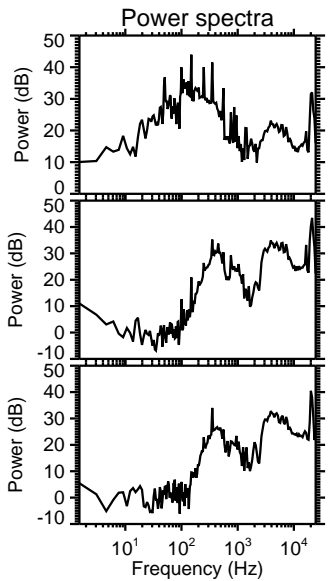
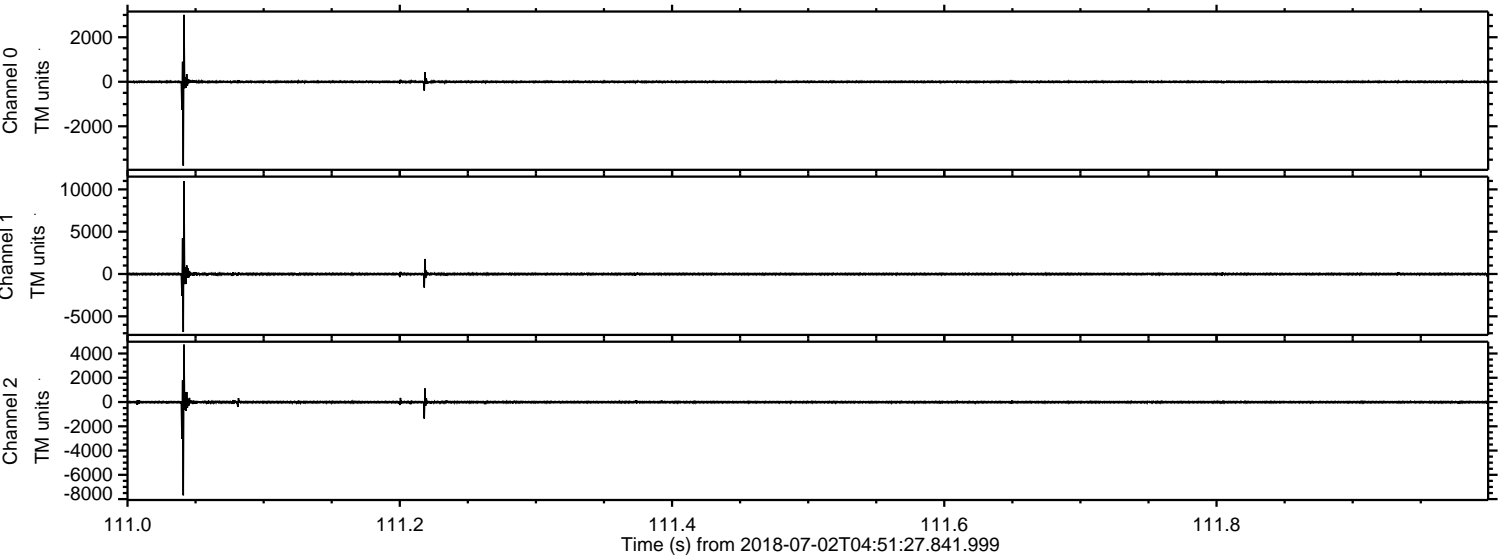


Processed Mon Jul 2 06:59:53 2018 by ELM ver.2012-10-06 from 001__elm20180702_045126__dat00.bin

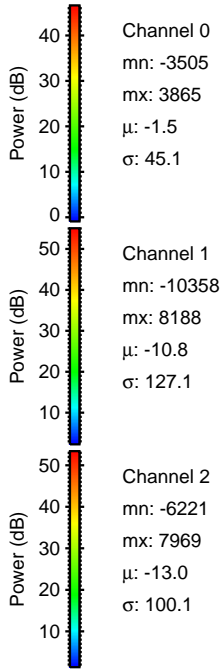
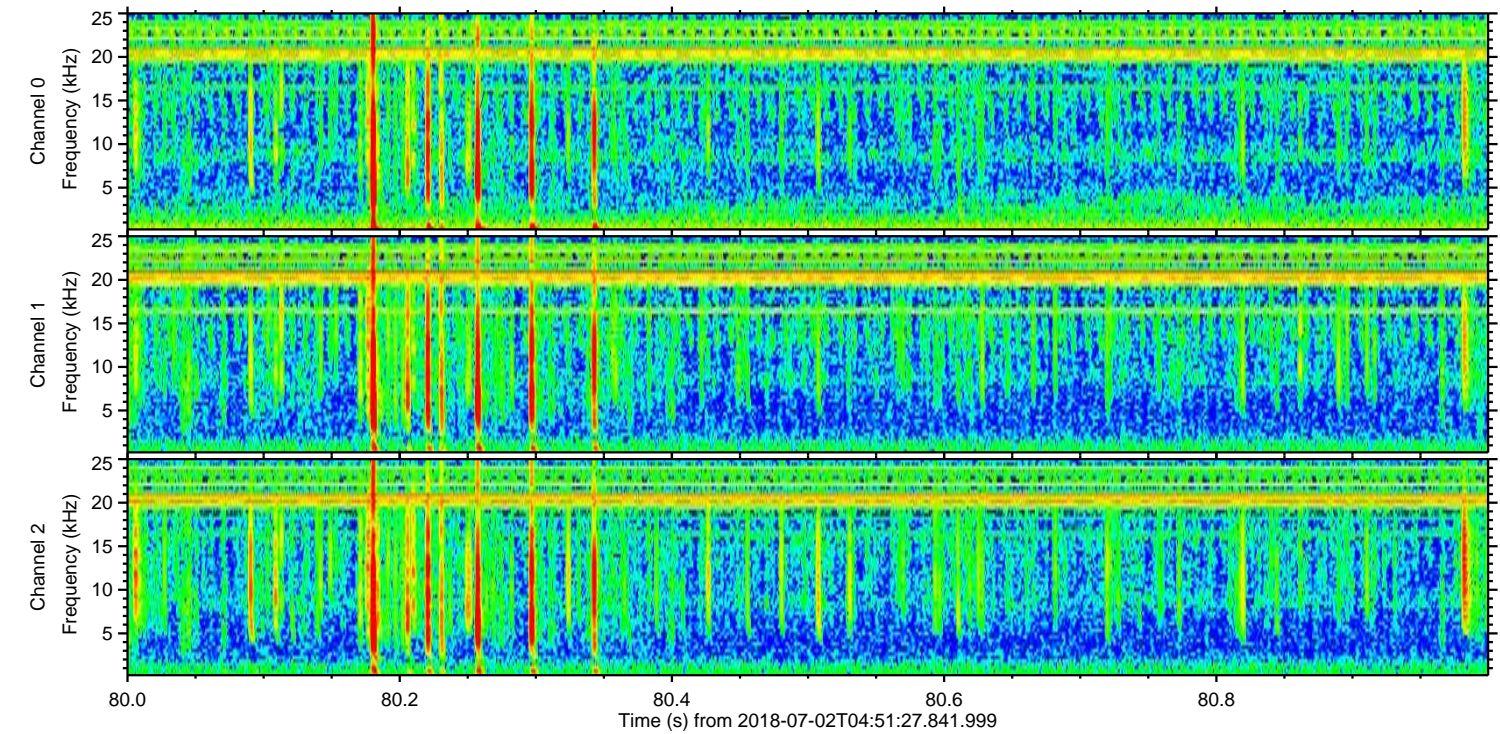
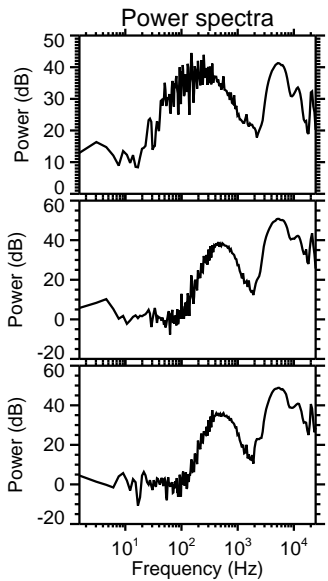
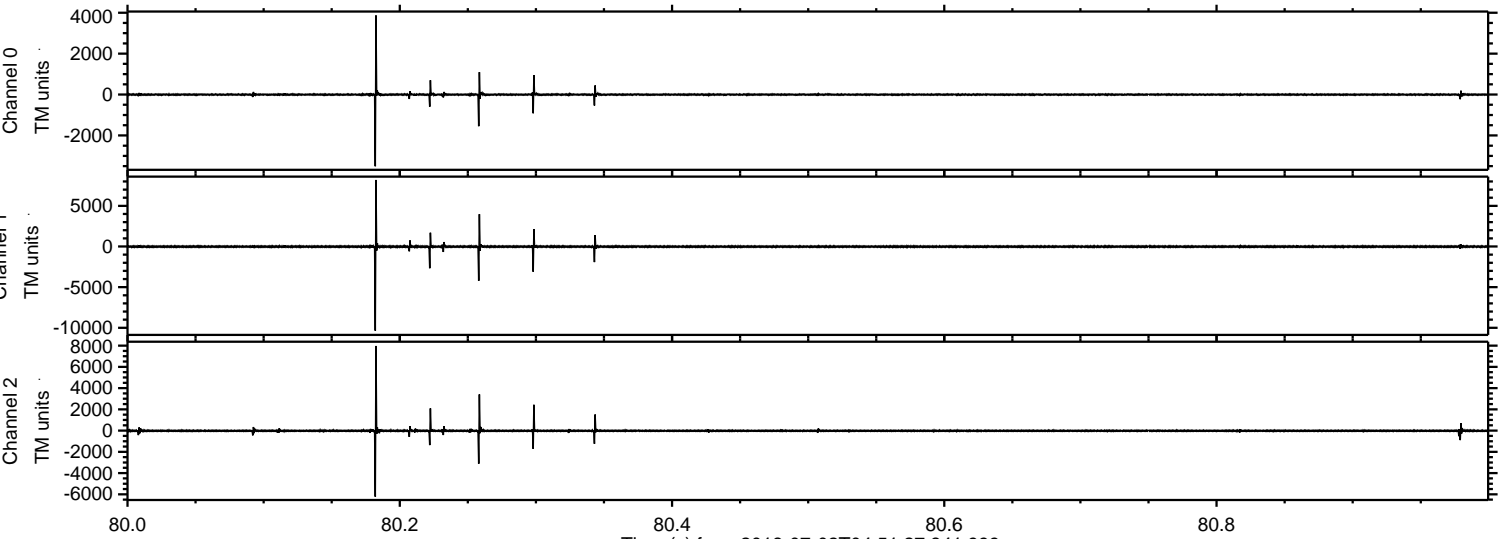


ELMAVAN 3D WAVEFORMS (Measured data sampled at 50 kHz) 51000 packets of 144 samples from 2018-07-02T04:51:27.841.999. Part 112/147

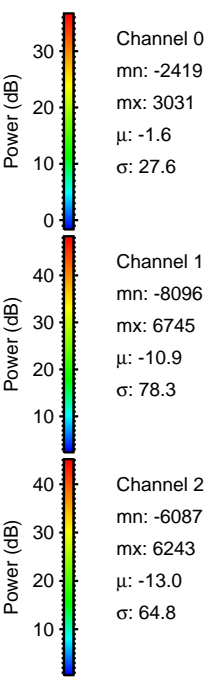
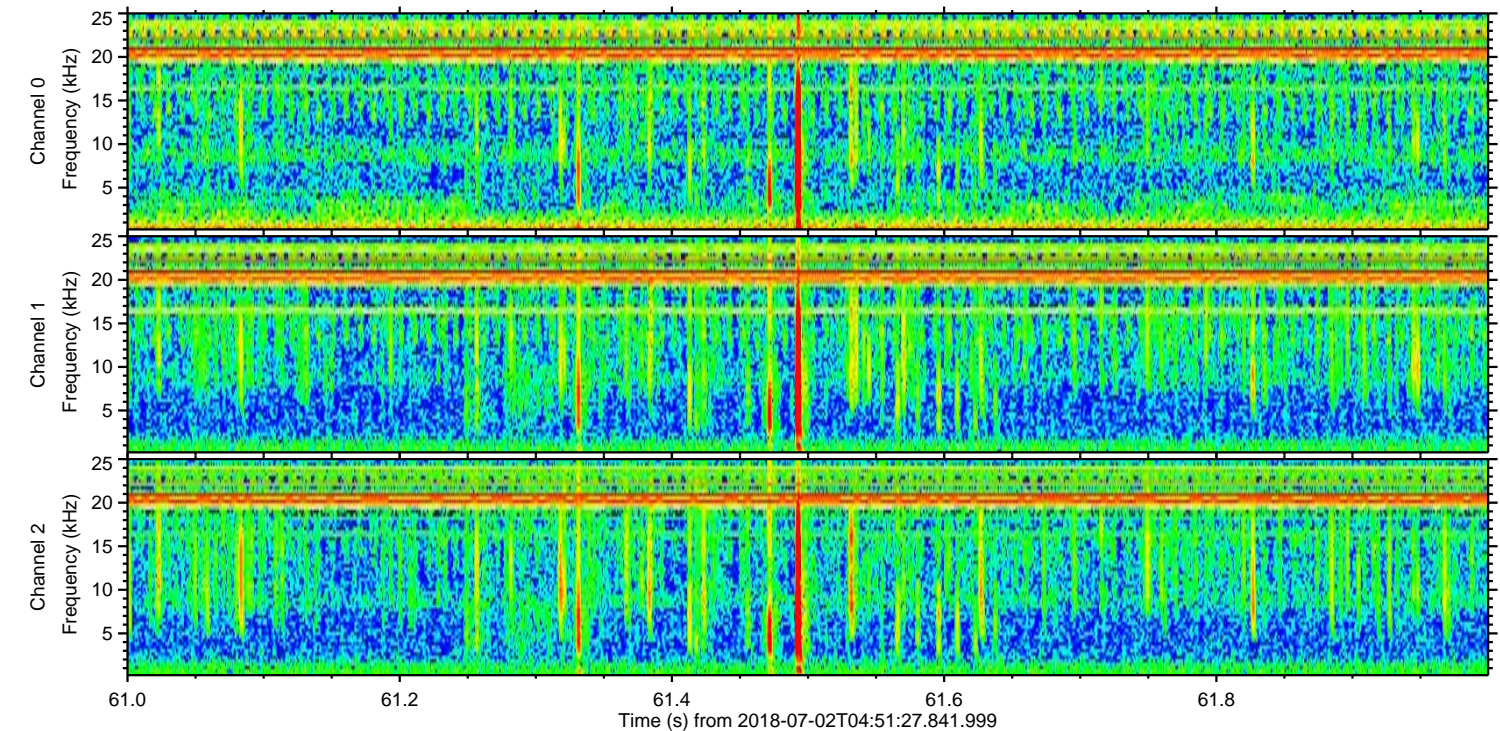
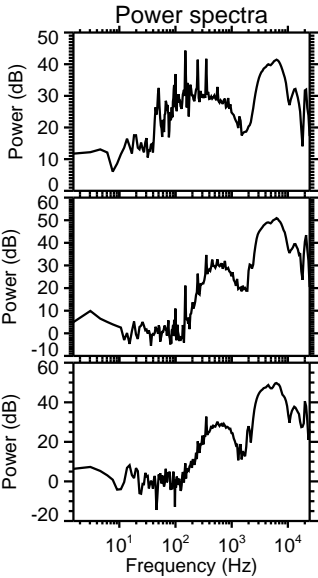
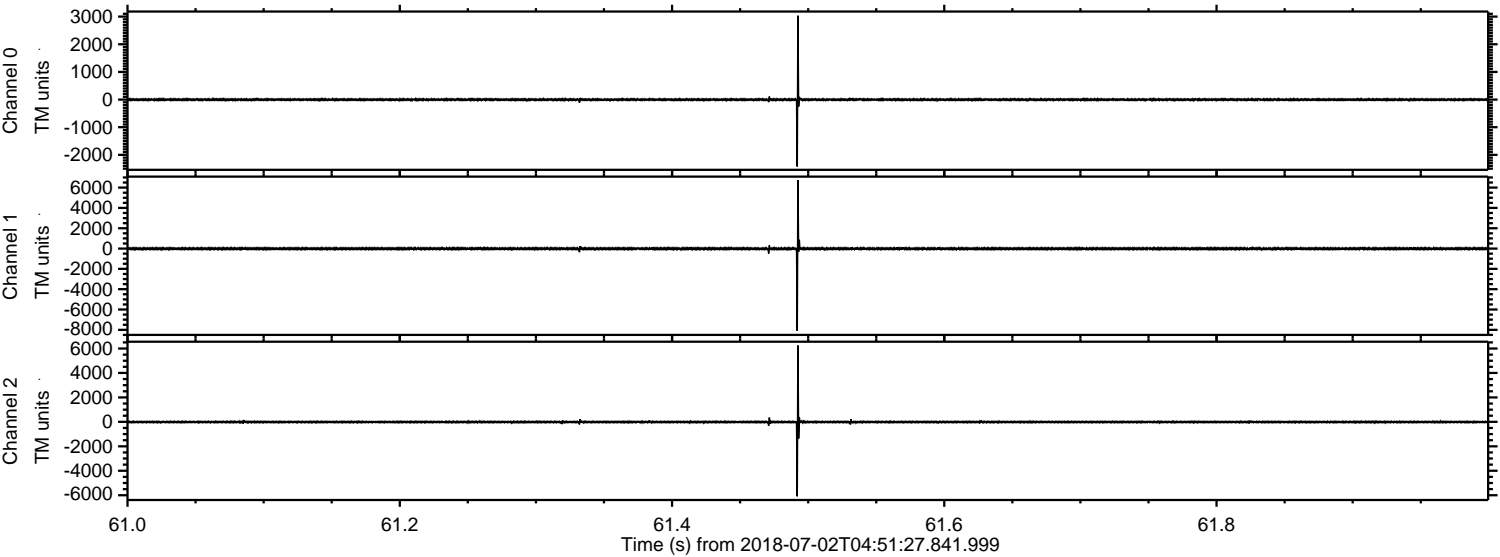
Processed Mon Jul 2 06:59:54 2018 by ELM ver.2012-10-06 from 001__elm20180702_045126__dat00.bin



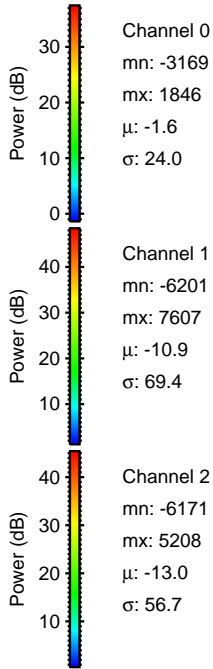
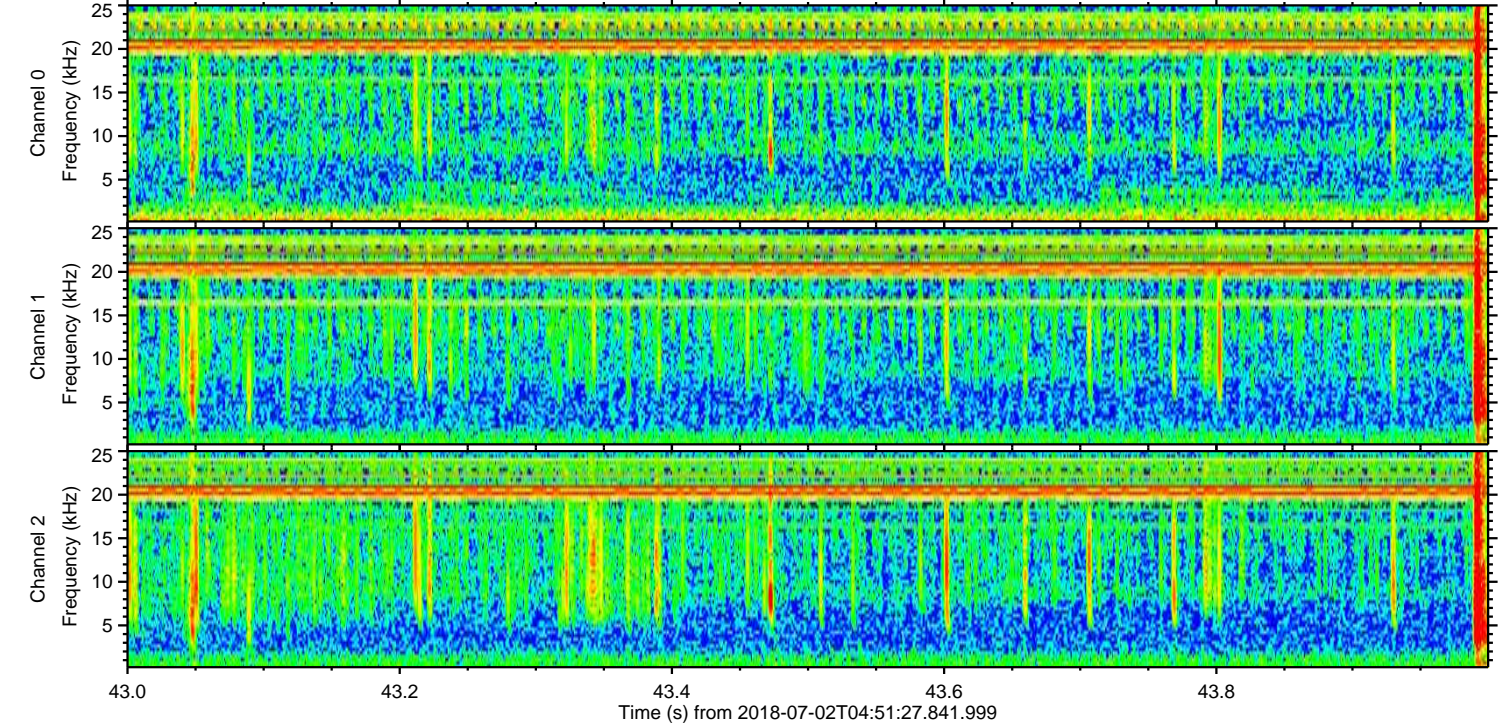
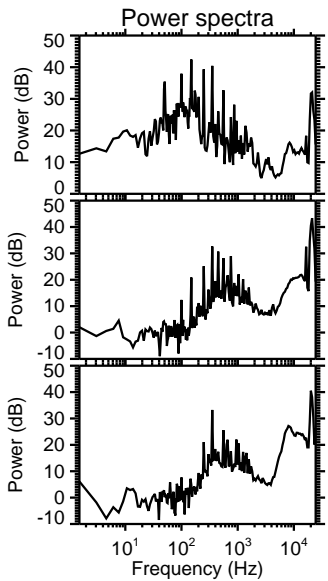
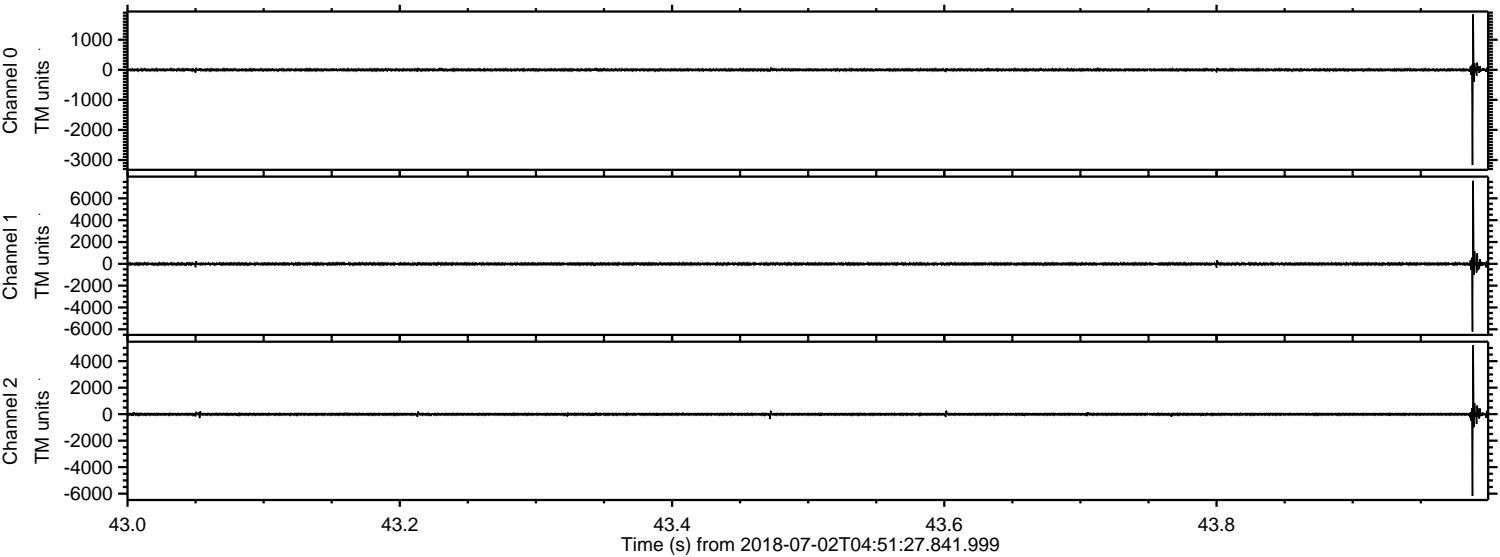
Processed Mon Jul 2 06:59:54 2018 by ELM ver.2012-10-06 from 001__elm20180702_045126__dat00.bin



Processed Mon Jul 2 06:59:55 2018 by ELM ver.2012-10-06 from 001__elm20180702_045126__dat00.bin

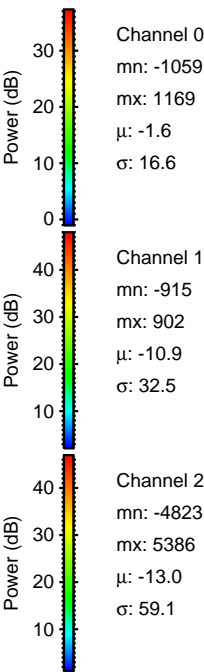
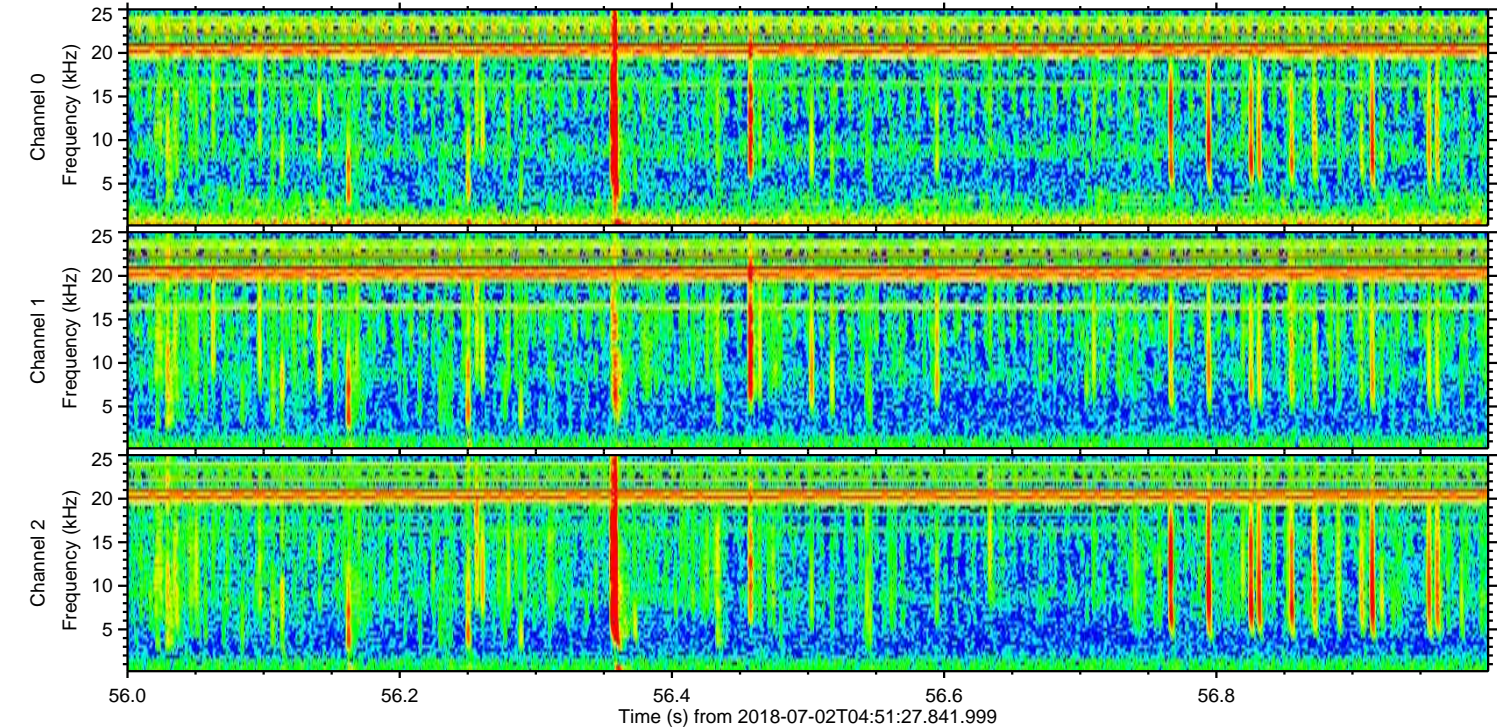
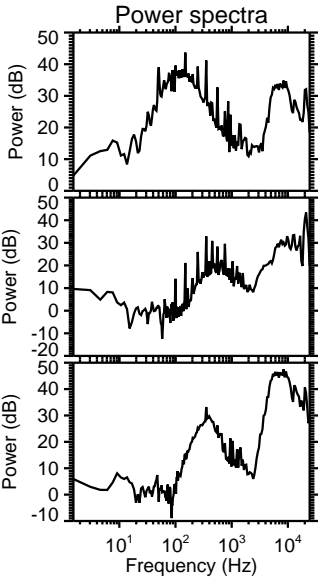
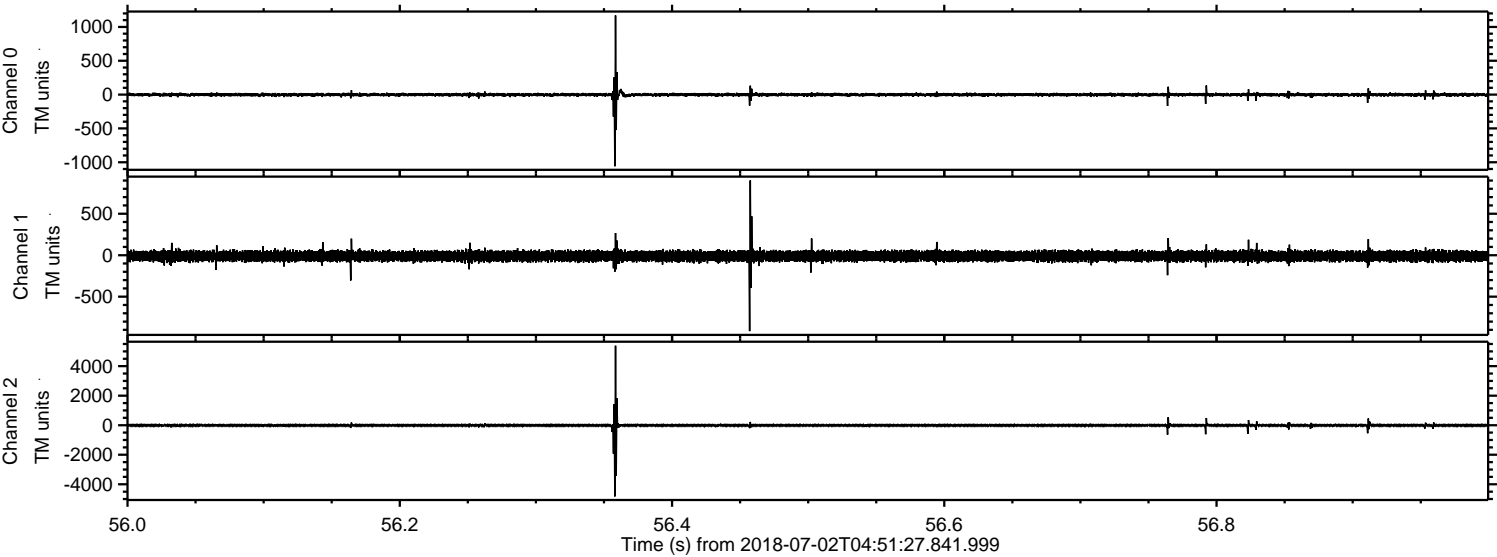


Processed Mon Jul 2 06:59:56 2018 by ELM ver.2012-10-06 from 001__elm20180702_045126__dat00.bin

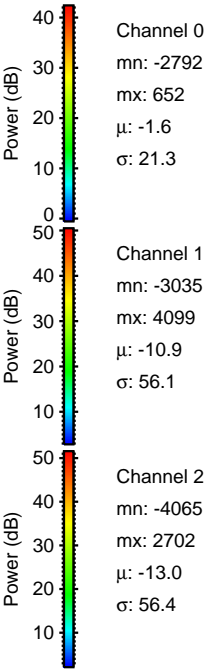
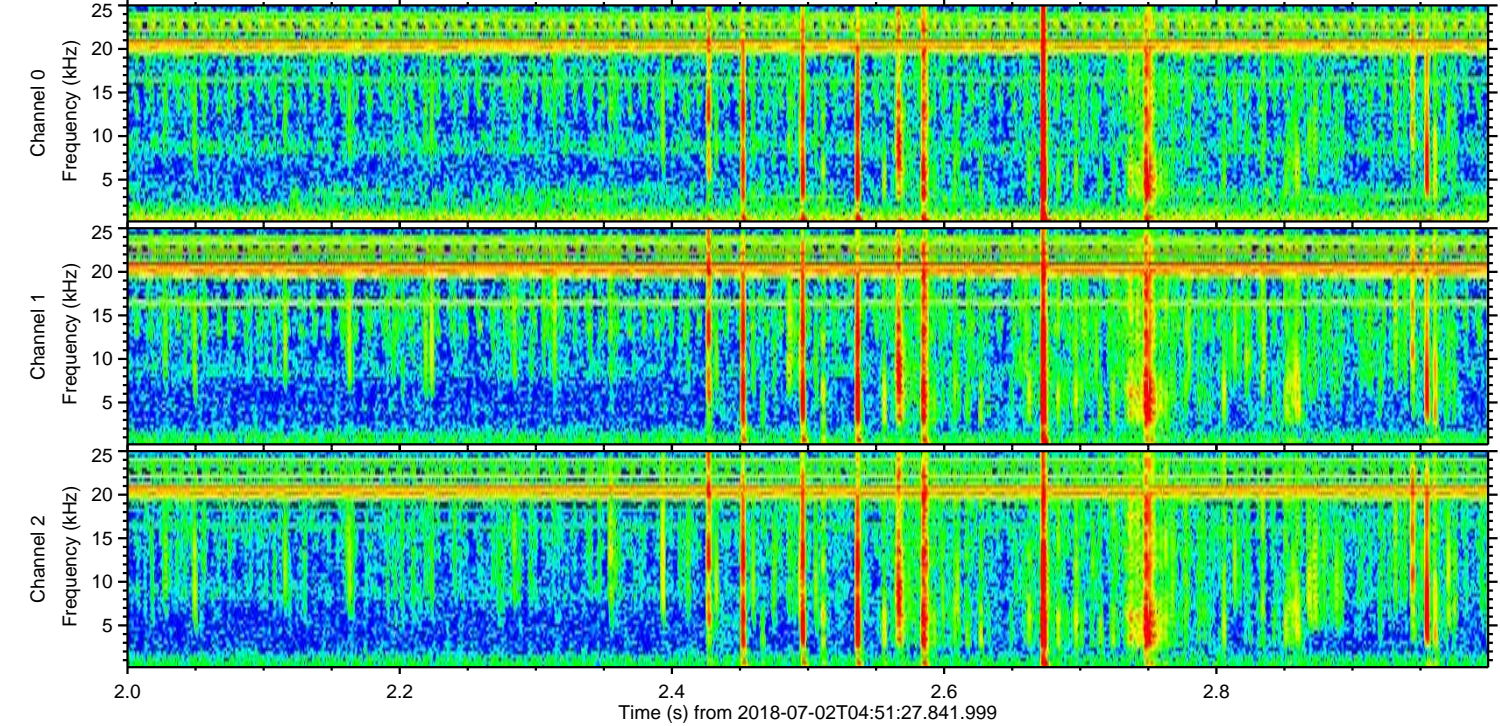
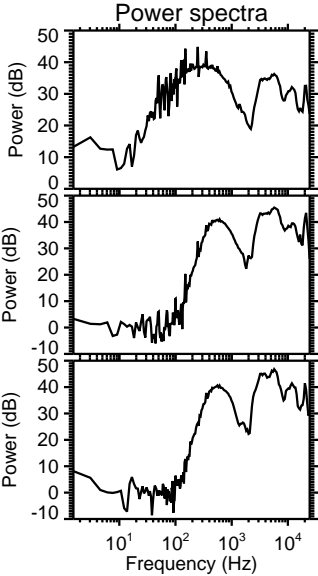
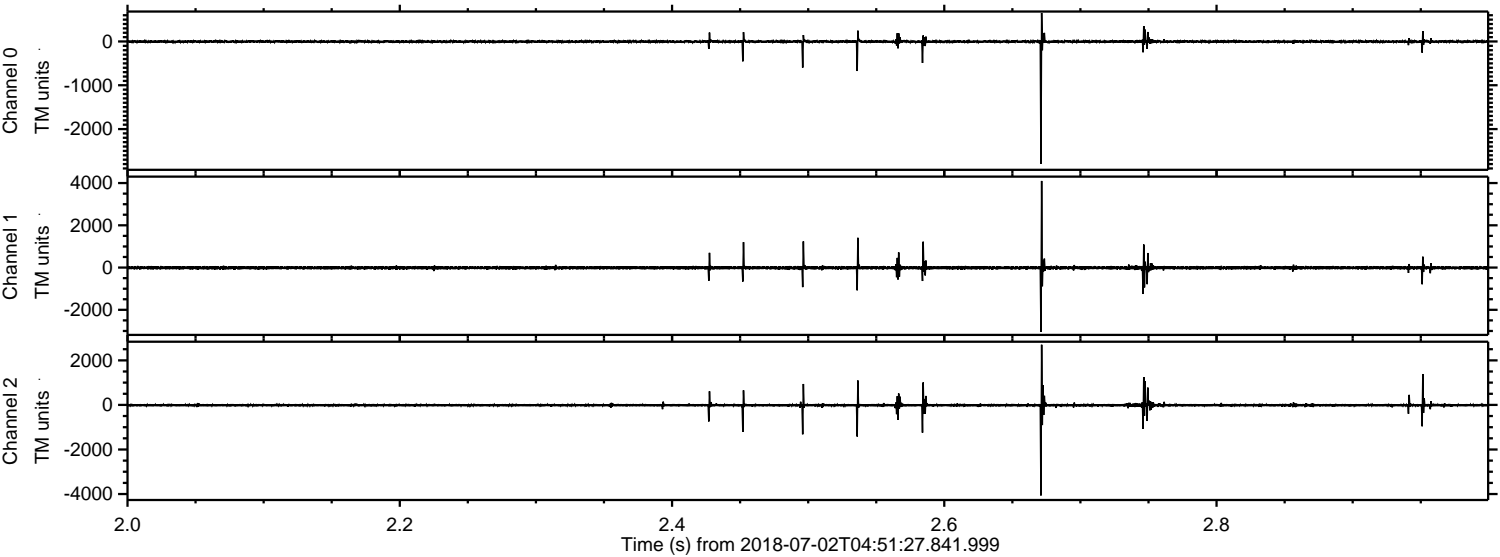


ELMAVAN 3D WAVEFORMS (Measured data sampled at 50 kHz) 51000 packets of 144 samples from 2018-07-02T04:51:27.841.999. Part 57/147

Processed Mon Jul 2 06:59:56 2018 by ELM ver.2012-10-06 from 001__elm20180702_045126__dat00.bin



Processed Mon Jul 2 06:59:57 2018 by ELM ver.2012-10-06 from 001__elm20180702_045126__dat00.bin



Channel 0
mn: -2792
mx: 652
 μ : -1.6
 σ : 21.3

Channel 1
mn: -3035
mx: 4099
 μ : -10.9
 σ : 56.1

Channel 2
mn: -4065
mx: 2702
 μ : -13.0
 σ : 56.4

Processed Mon Jul 2 06:59:58 2018 by ELM ver.2012-10-06 from 001__elm20180702_045126__dat00.bin

