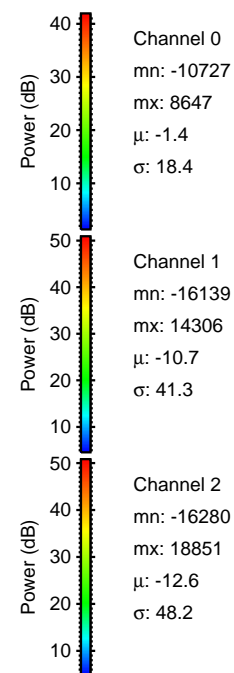
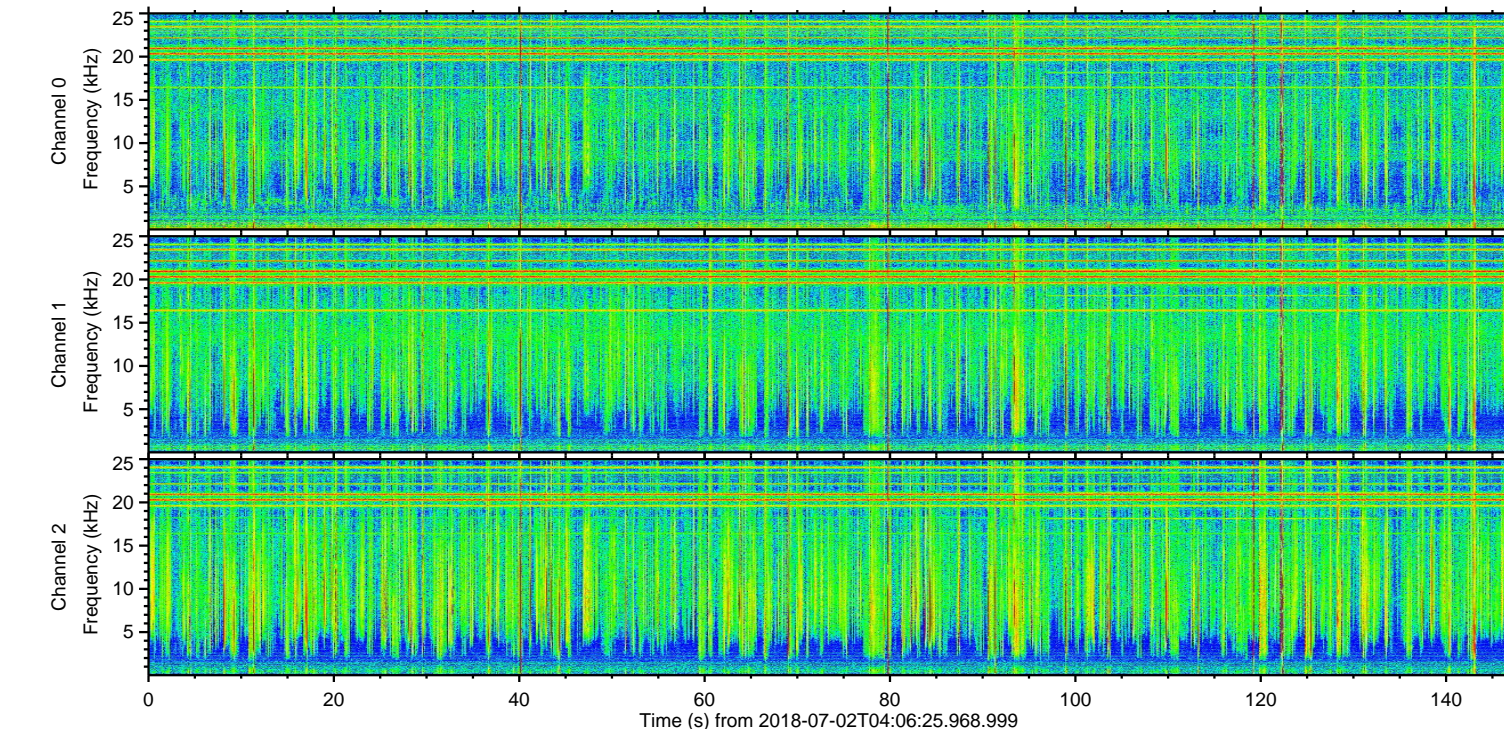
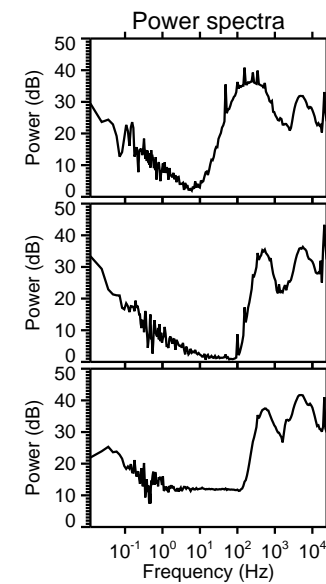
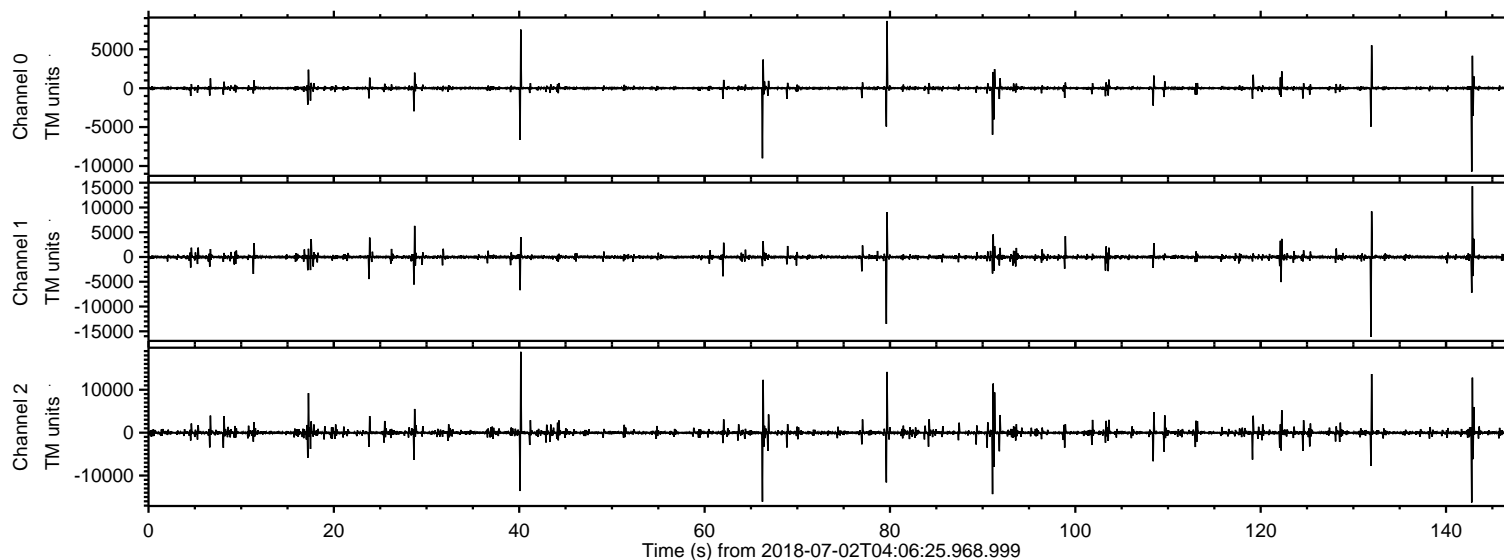
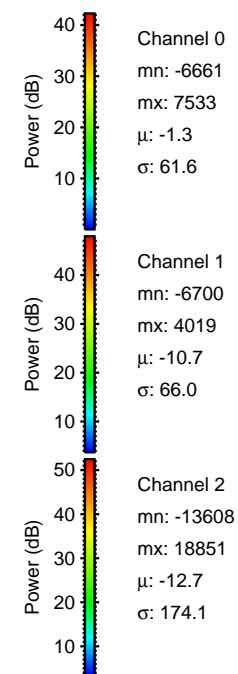
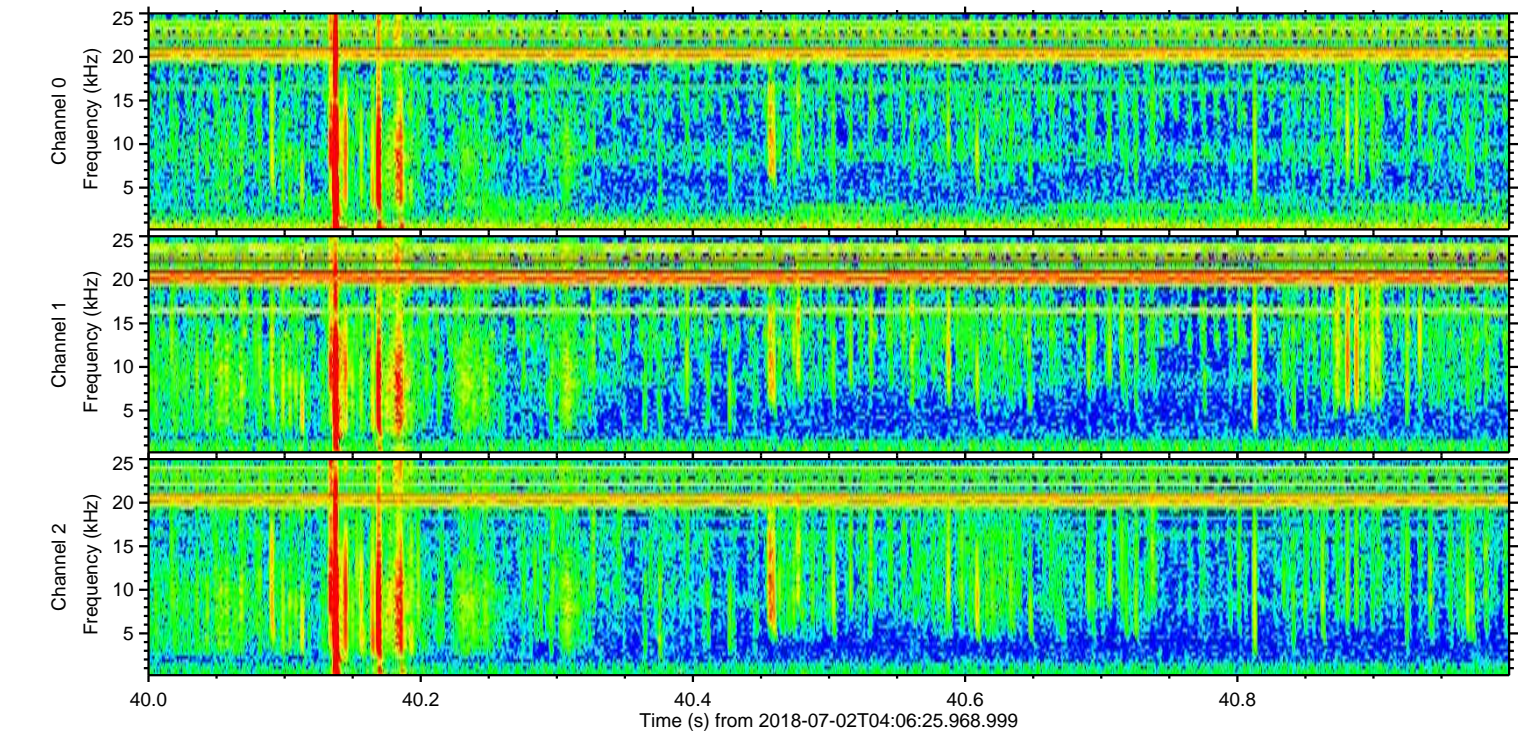
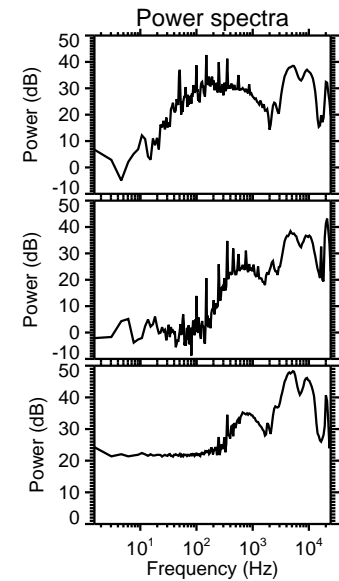
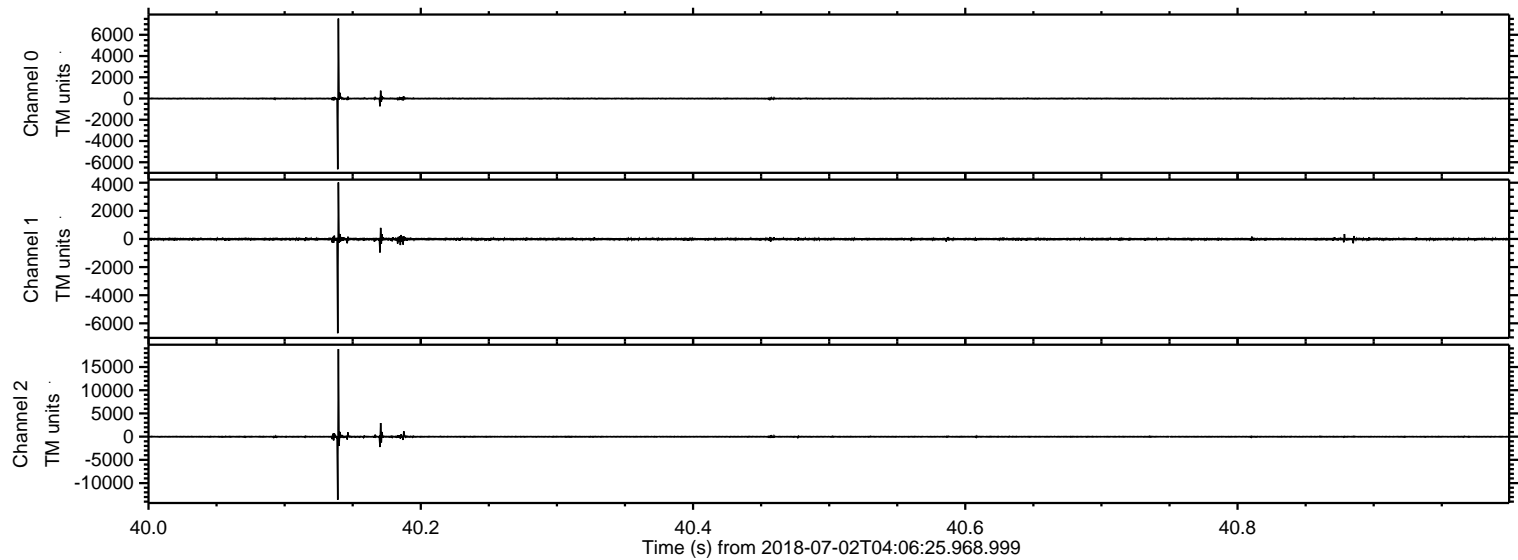


ELMAVAN 3D WAVEFORMS (Measured data sampled at 50 kHz) 51000 packets of 144 samples from 2018-07-02T04:06:25.968.999.

Processed Mon Jul 2 06:14:45 2018 by ELM ver.2012-10-06 from 001__elm20180702_040624__dat00.bin

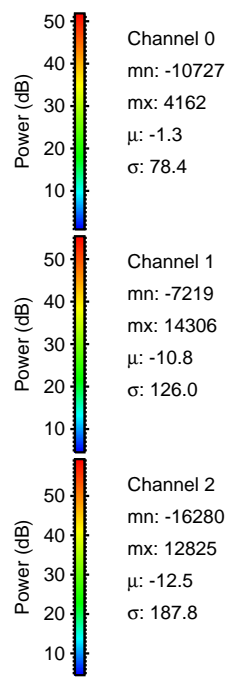
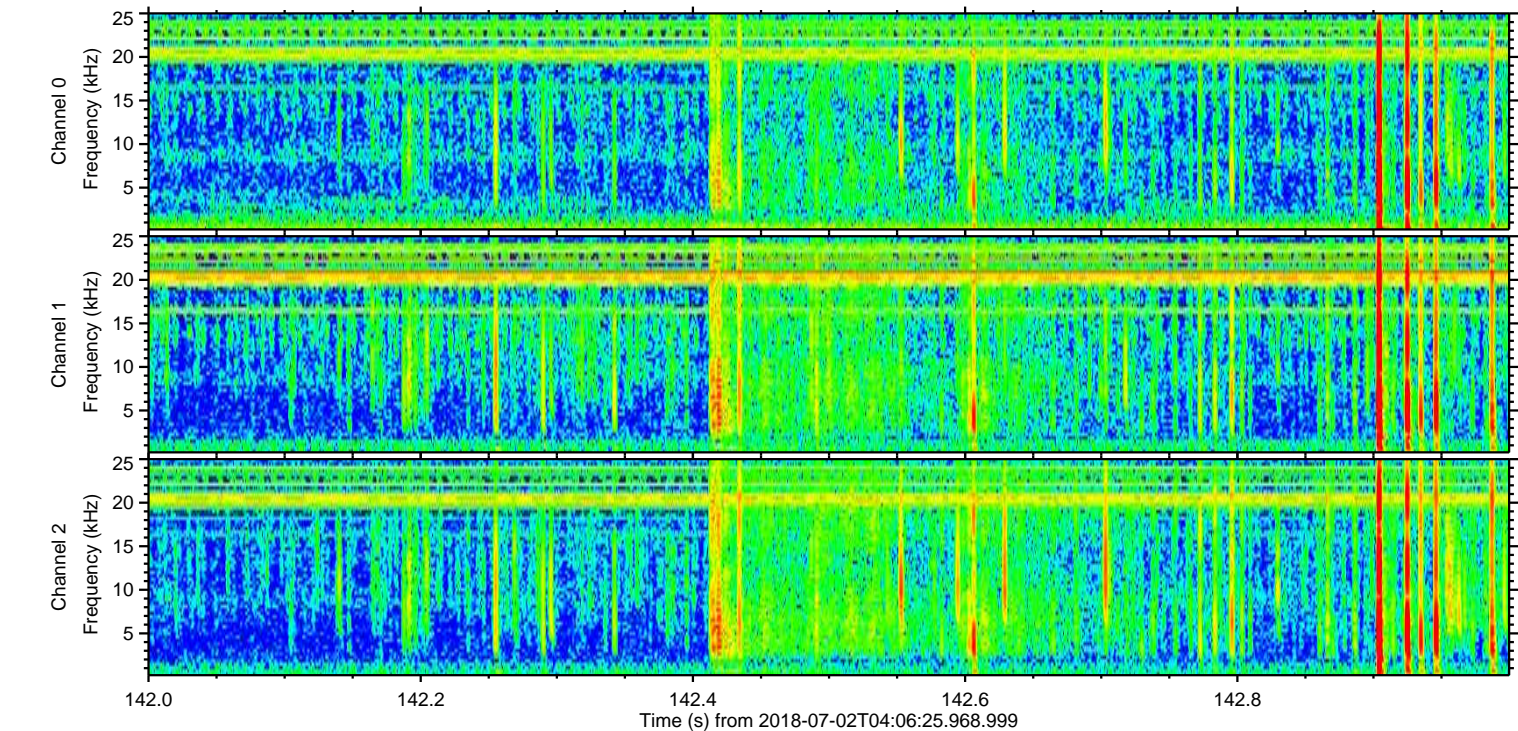
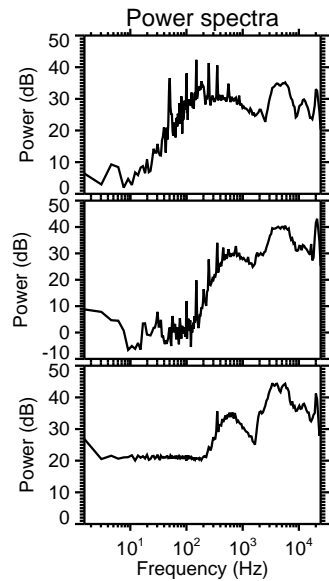
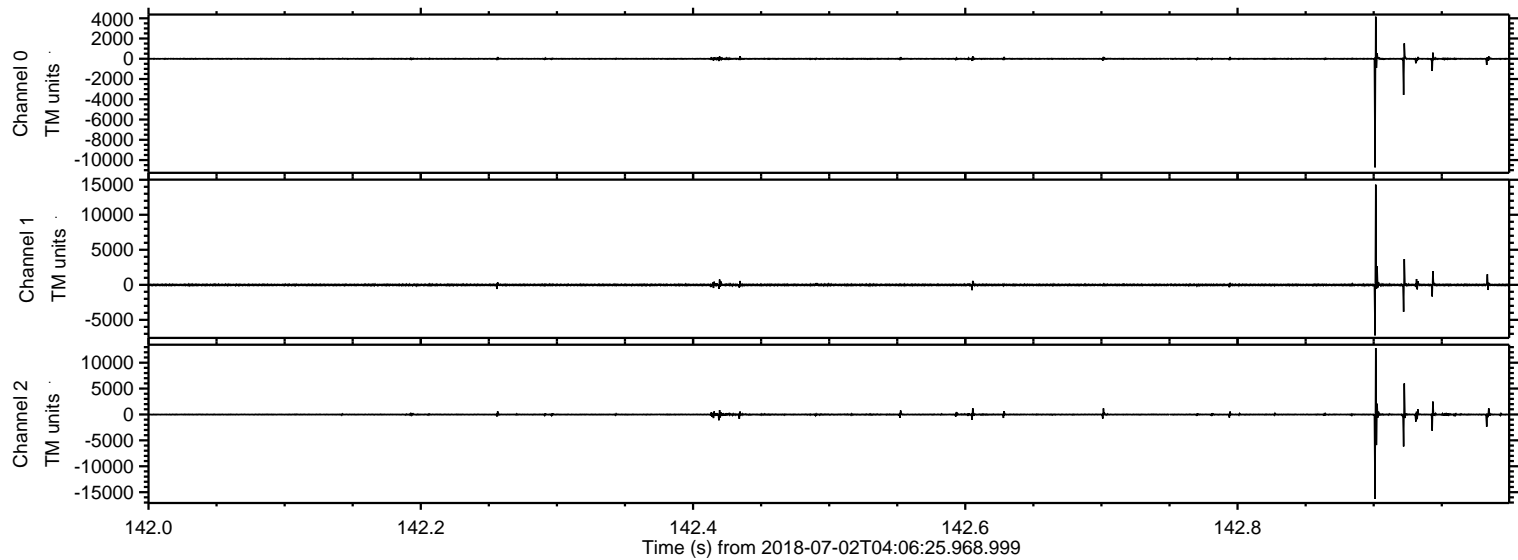


Processed Mon Jul 2 06:14:51 2018 by ELM ver.2012-10-06 from 001__elm20180702_040624__dat00.bin



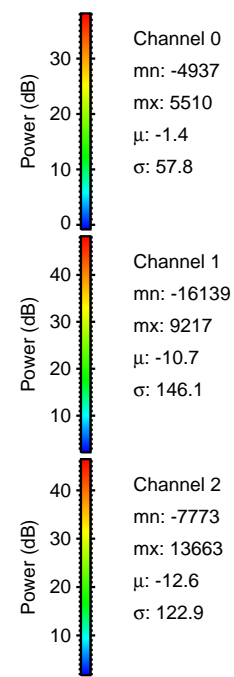
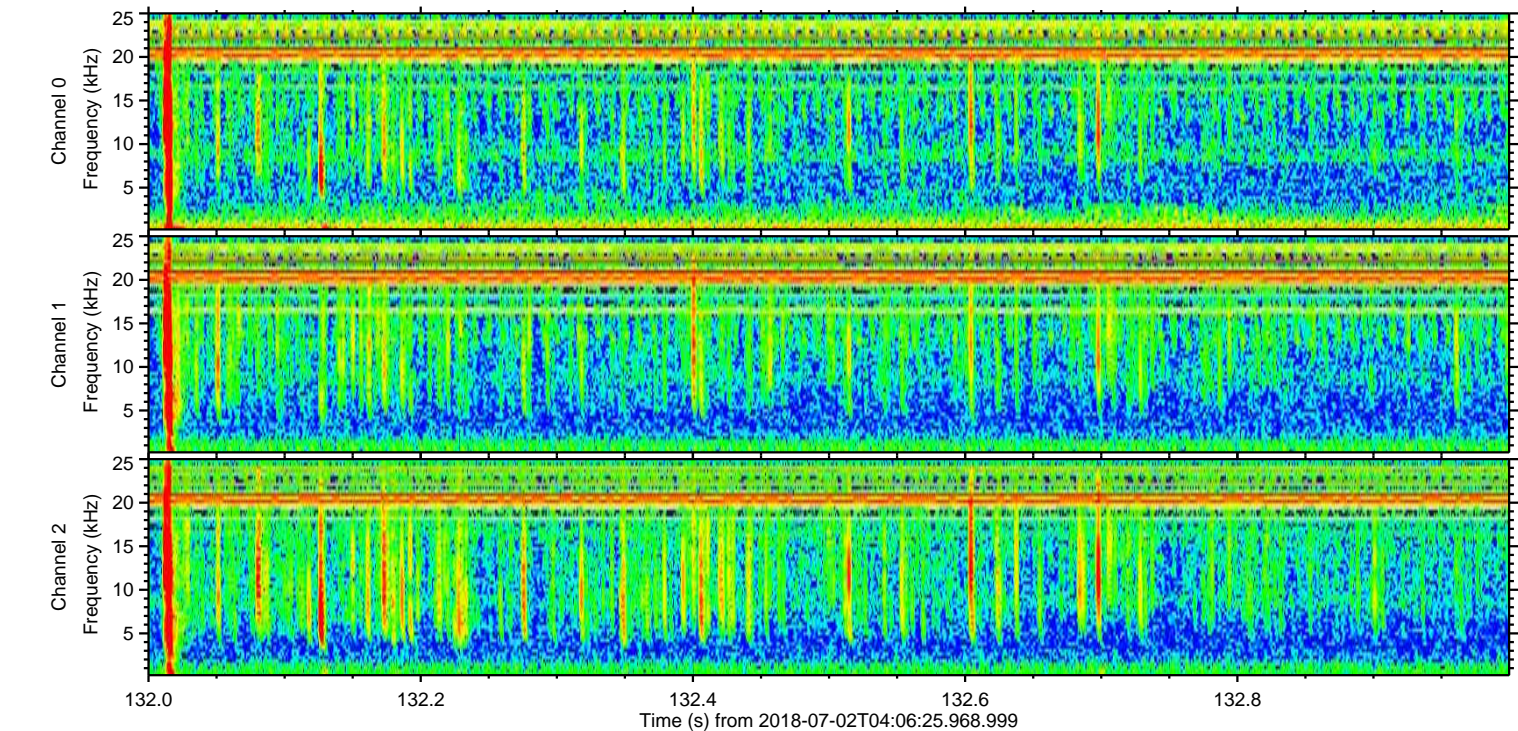
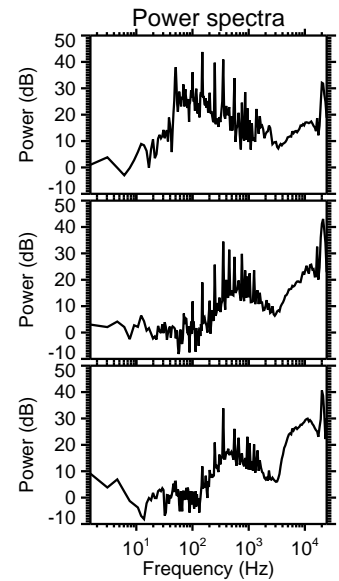
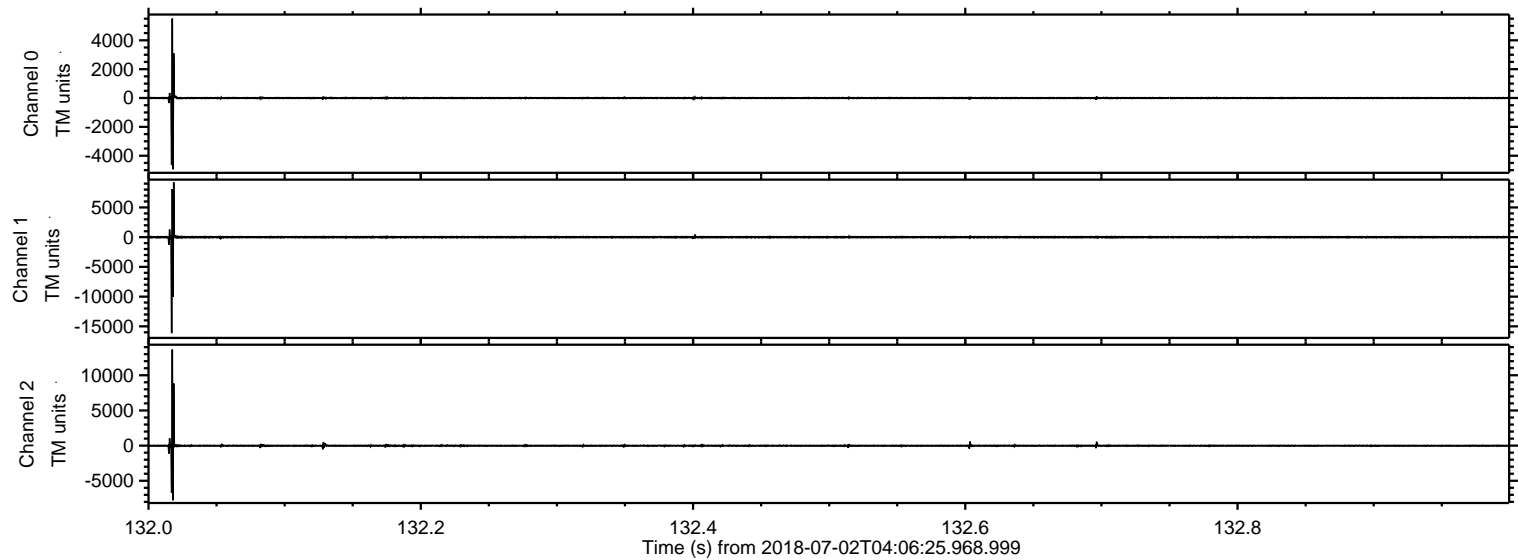
ELMAVAN 3D WAVEFORMS (Measured data sampled at 50 kHz) 51000 packets of 144 samples from 2018-07-02T04:06:25.968.999. Part 143/147

Processed Mon Jul 2 06:14:52 2018 by ELM ver.2012-10-06 from 001__elm20180702_040624__dat00.bin

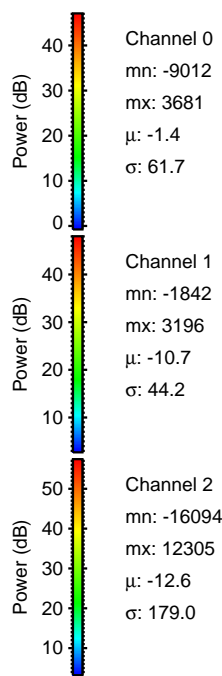
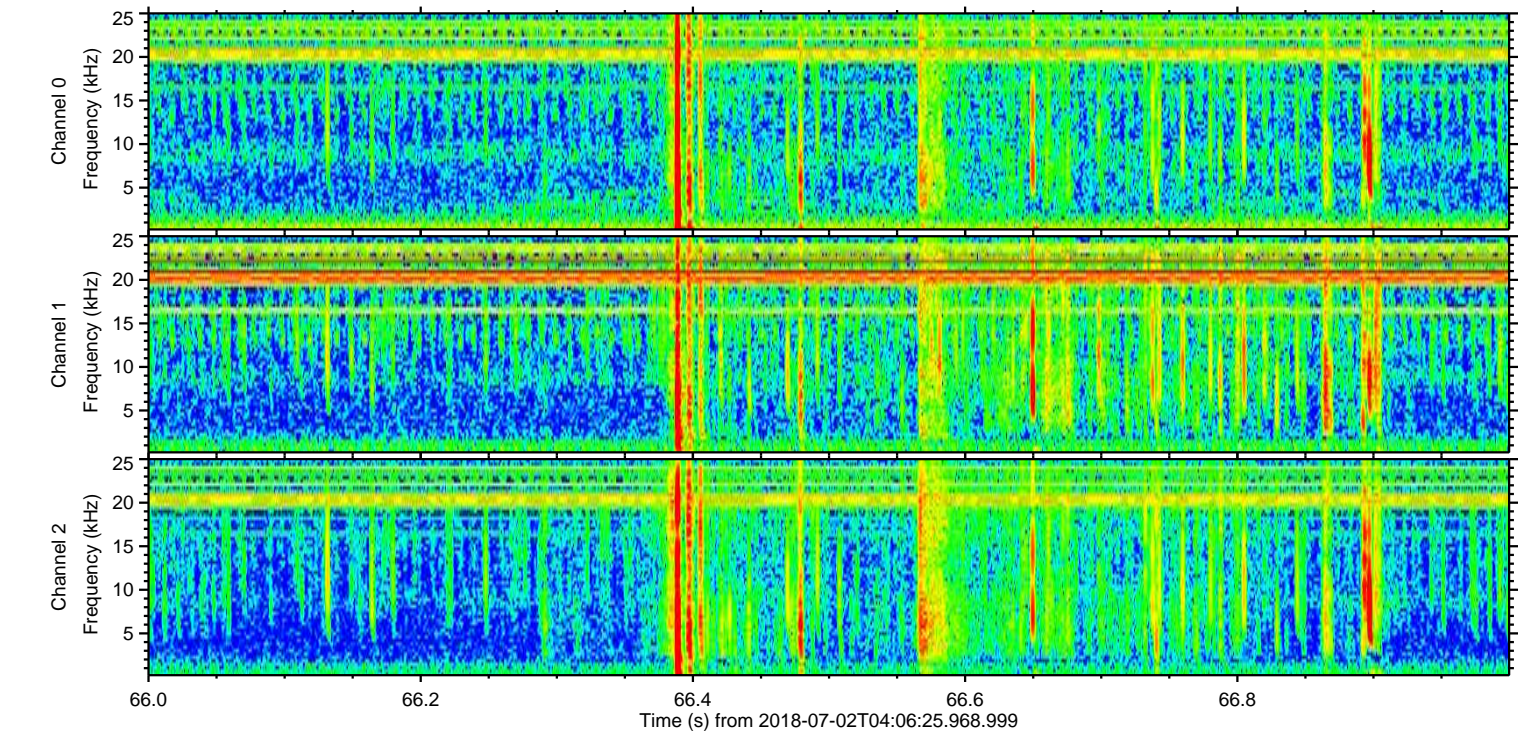
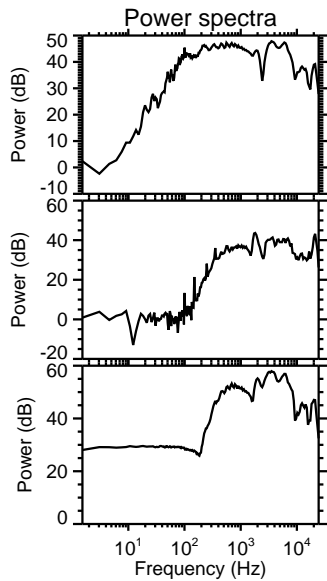
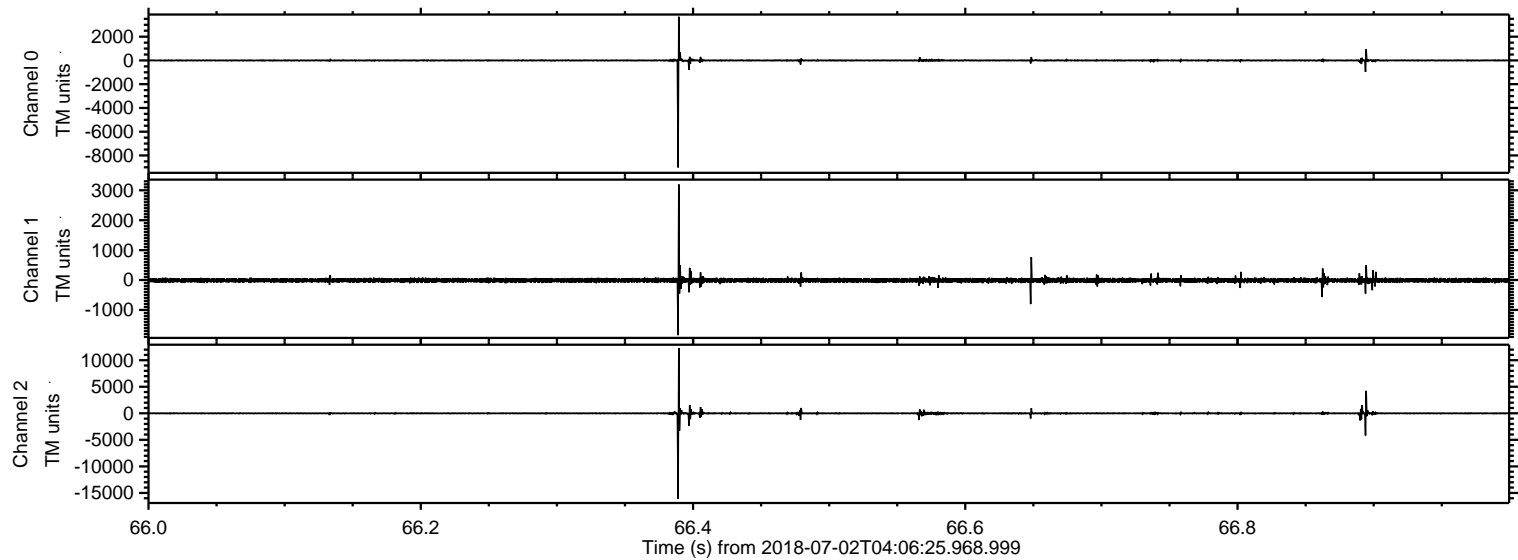


ELMAVAN 3D WAVEFORMS (Measured data sampled at 50 kHz) 51000 packets of 144 samples from 2018-07-02T04:06:25.968.999. Part 133/147

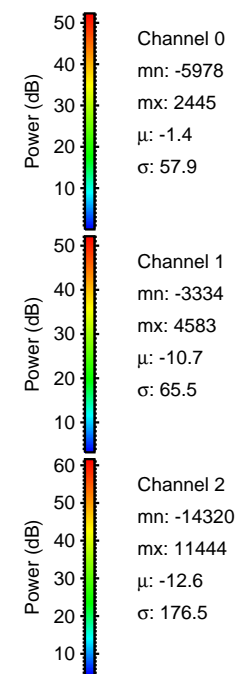
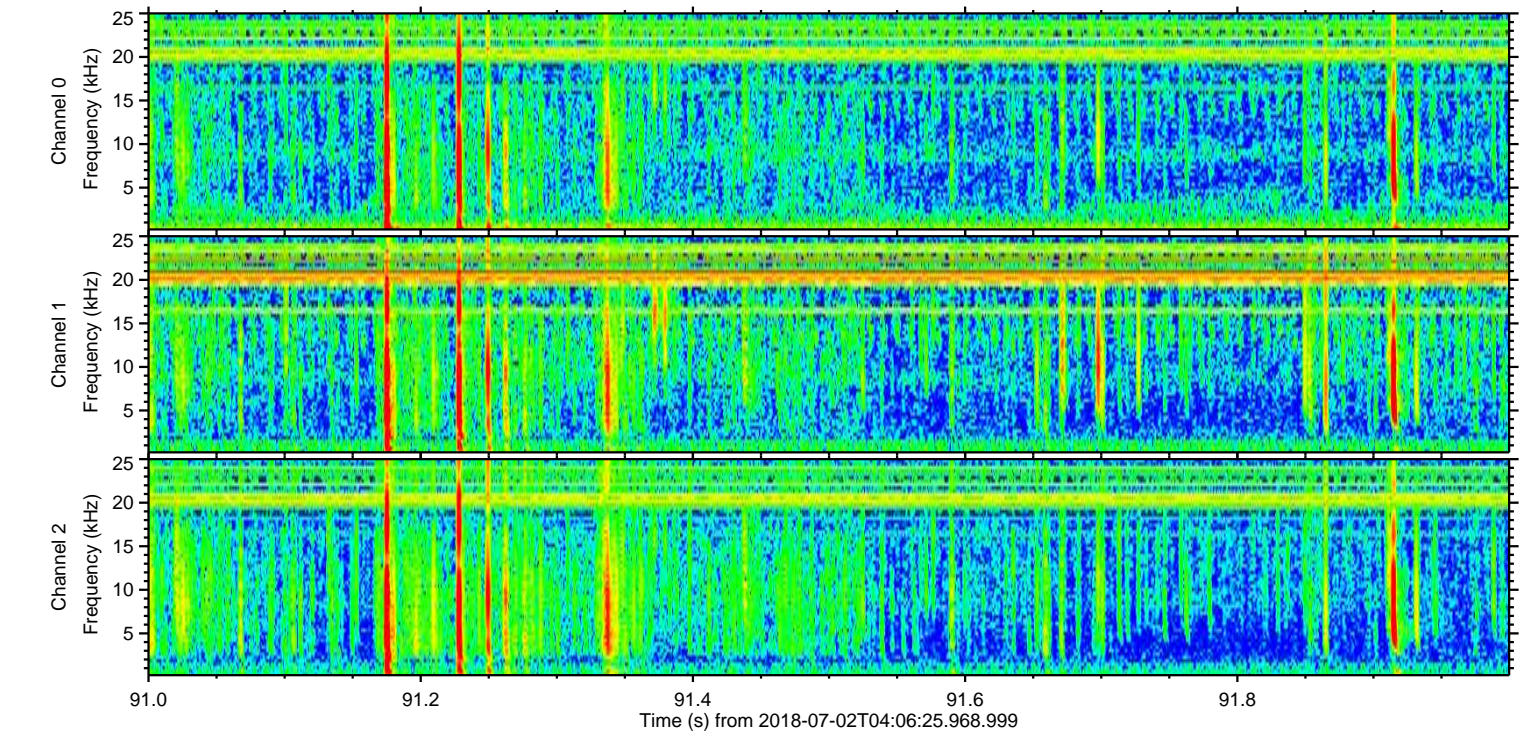
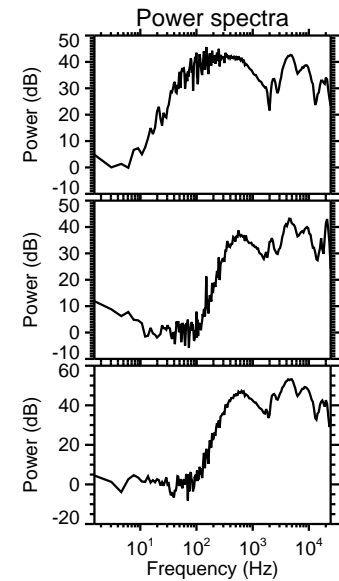
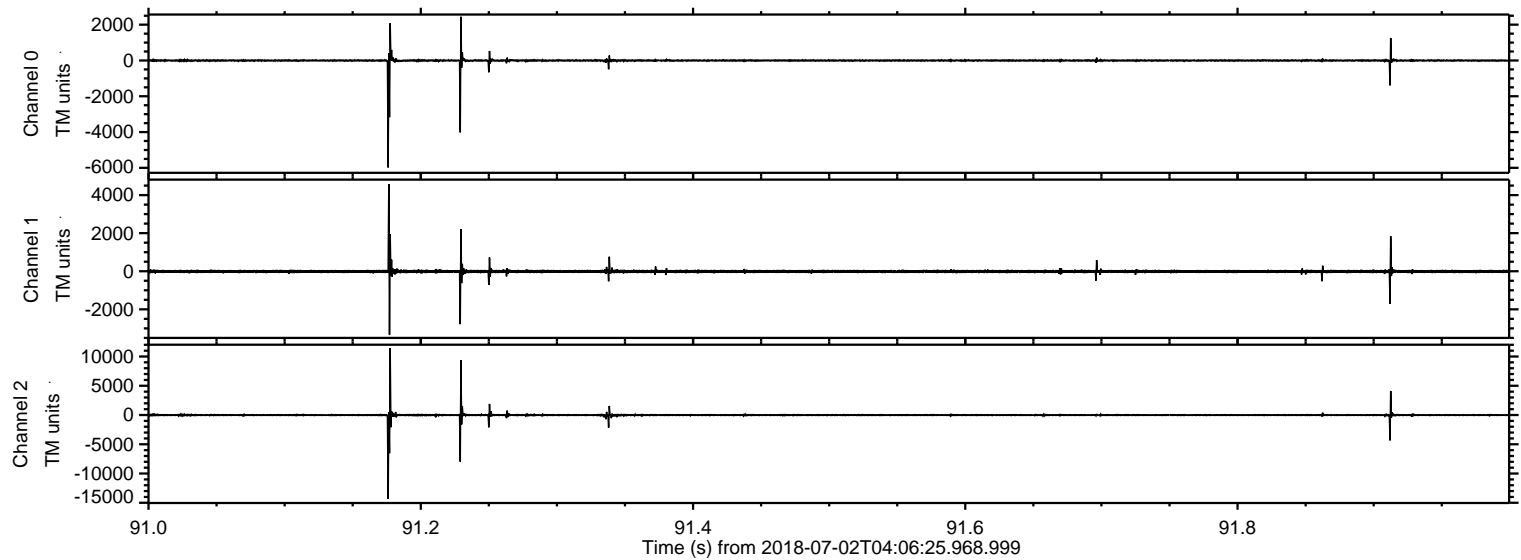
Processed Mon Jul 2 06:14:52 2018 by ELM ver.2012-10-06 from 001__elm20180702_040624__dat00.bin



Processed Mon Jul 2 06:14:53 2018 by ELM ver.2012-10-06 from 001__elm20180702_040624__dat00.bin

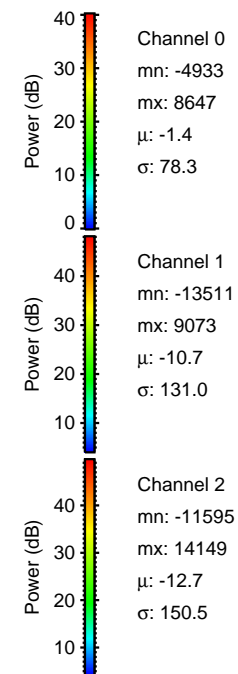
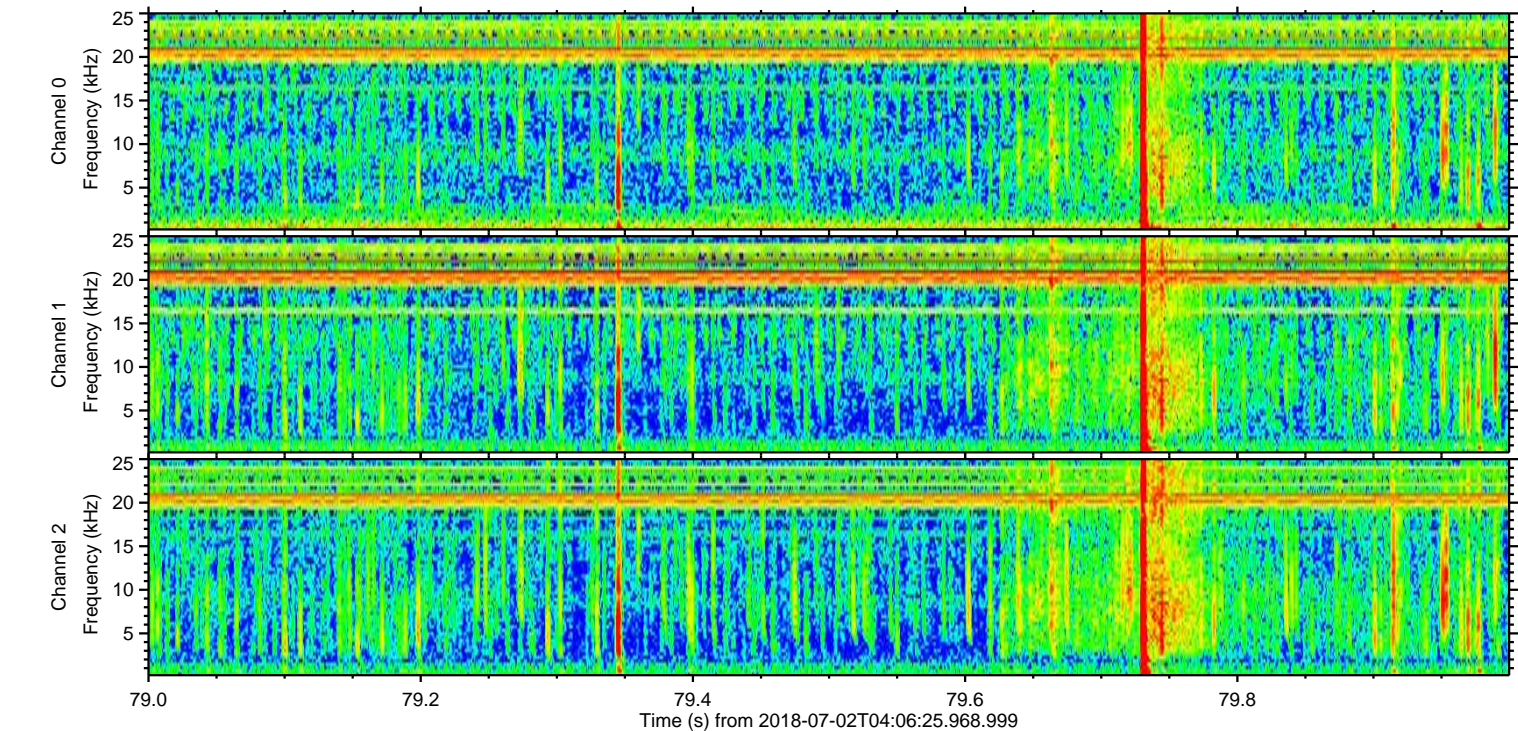
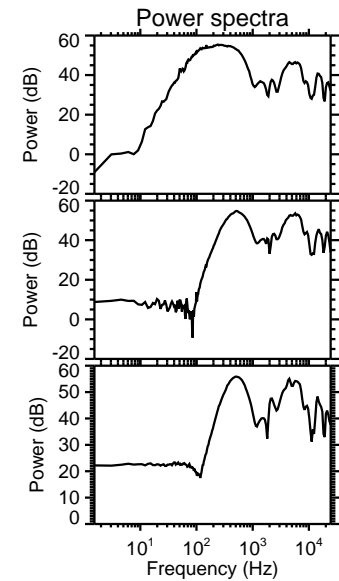
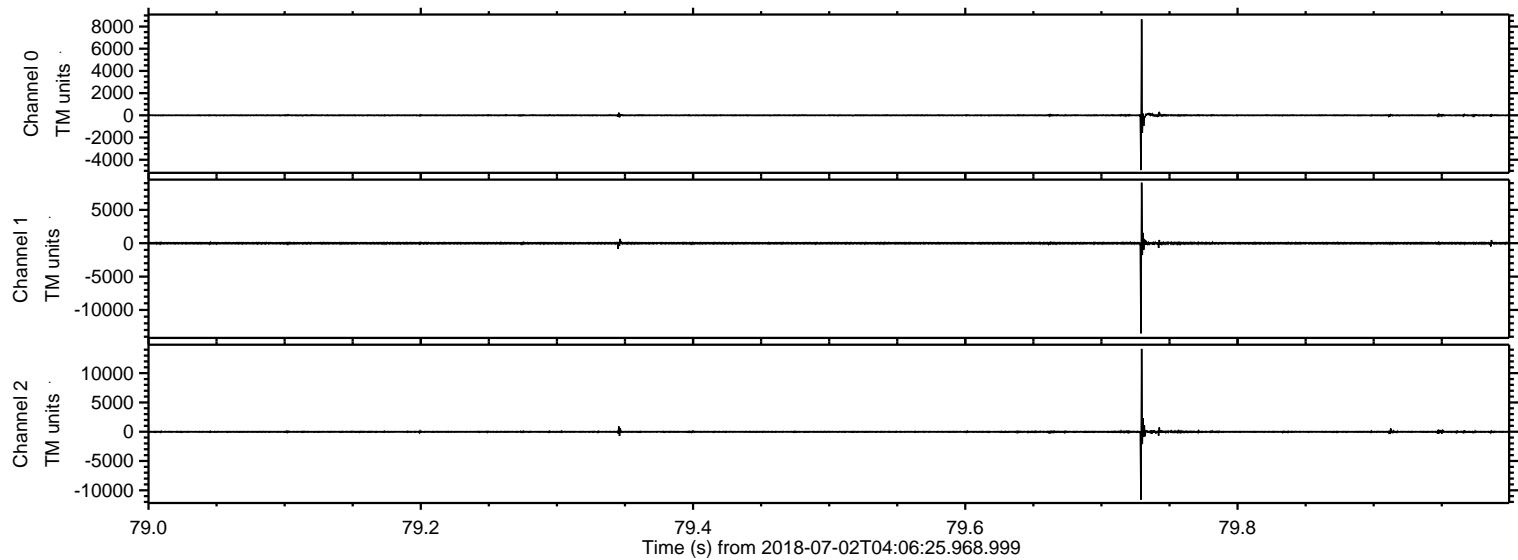


Processed Mon Jul 2 06:14:54 2018 by ELM ver.2012-10-06 from 001__elm20180702_040624__dat00.bin

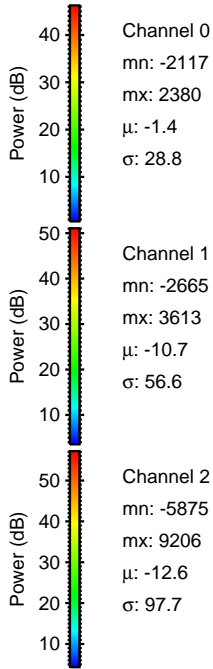
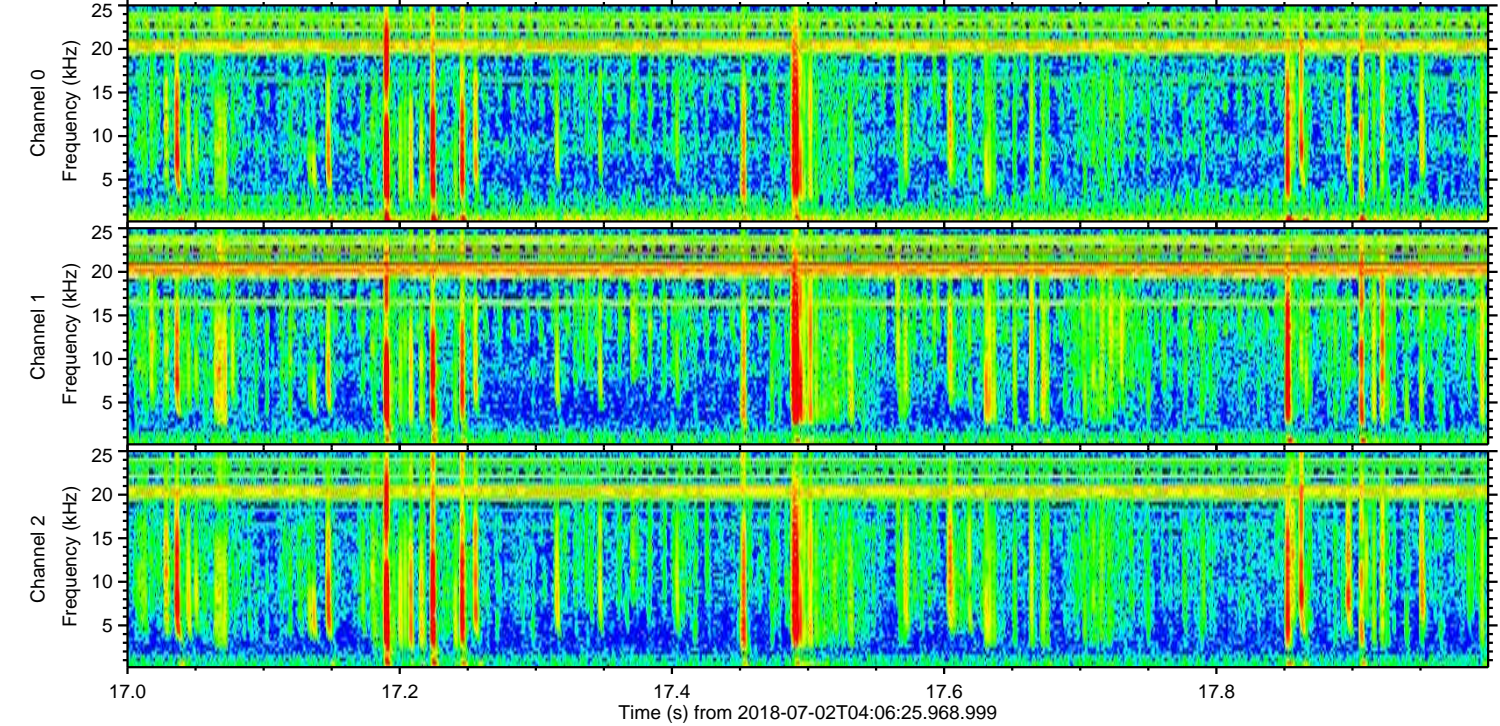
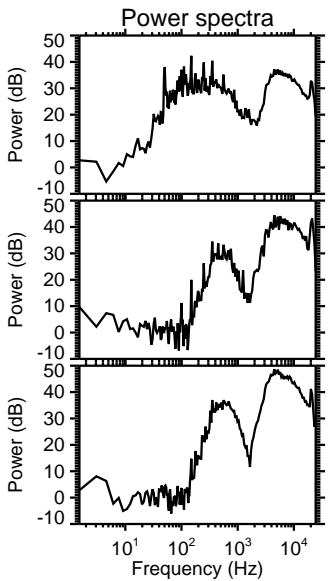
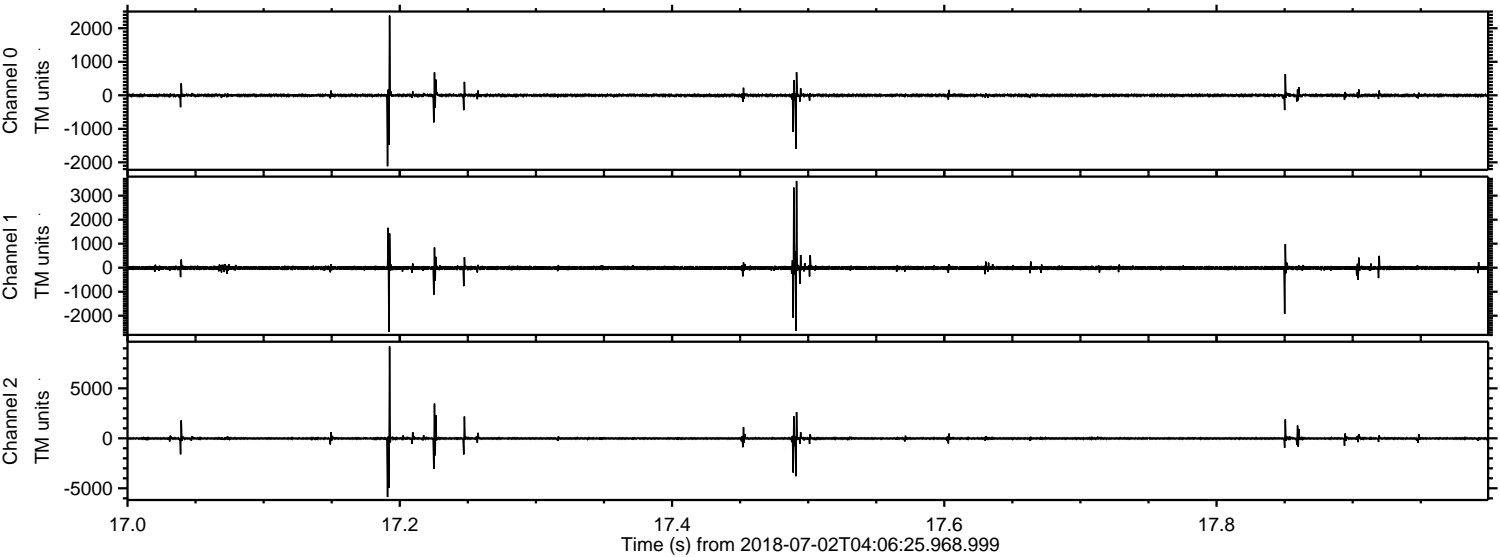


ELMAVAN 3D WAVEFORMS (Measured data sampled at 50 kHz) 51000 packets of 144 samples from 2018-07-02T04:06:25.968.999. Part 80/147

Processed Mon Jul 2 06:14:54 2018 by ELM ver.2012-10-06 from 001__elm20180702_040624__dat00.bin

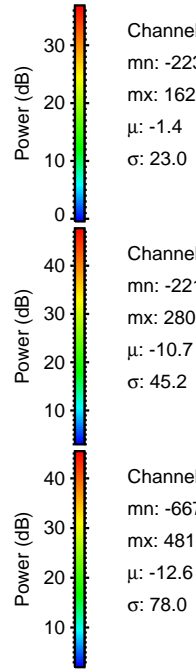
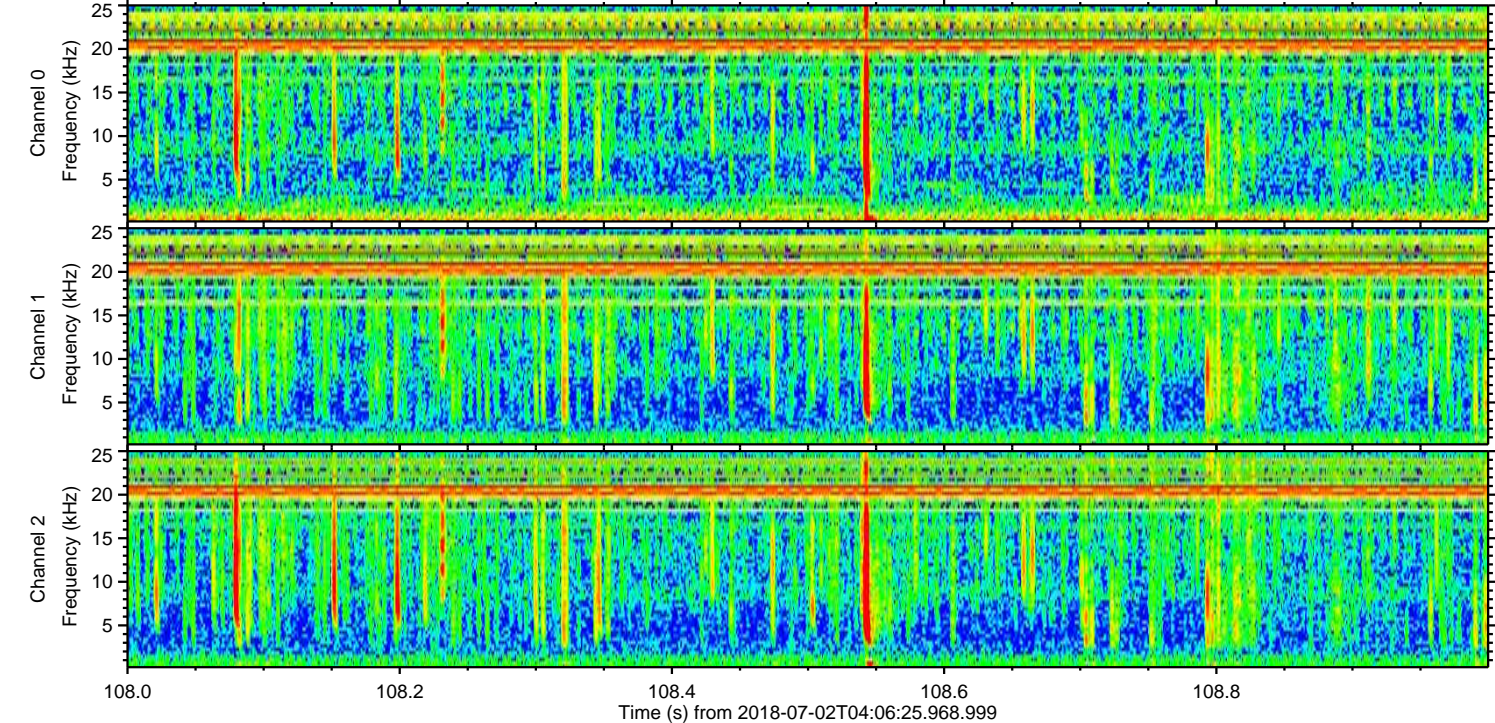
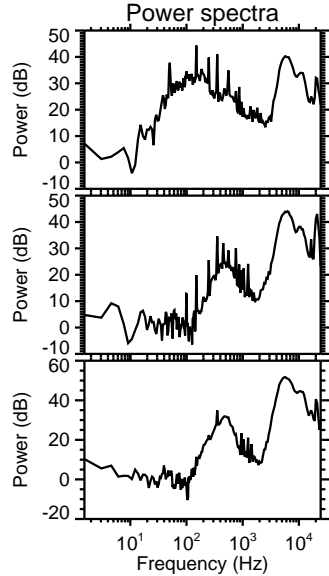
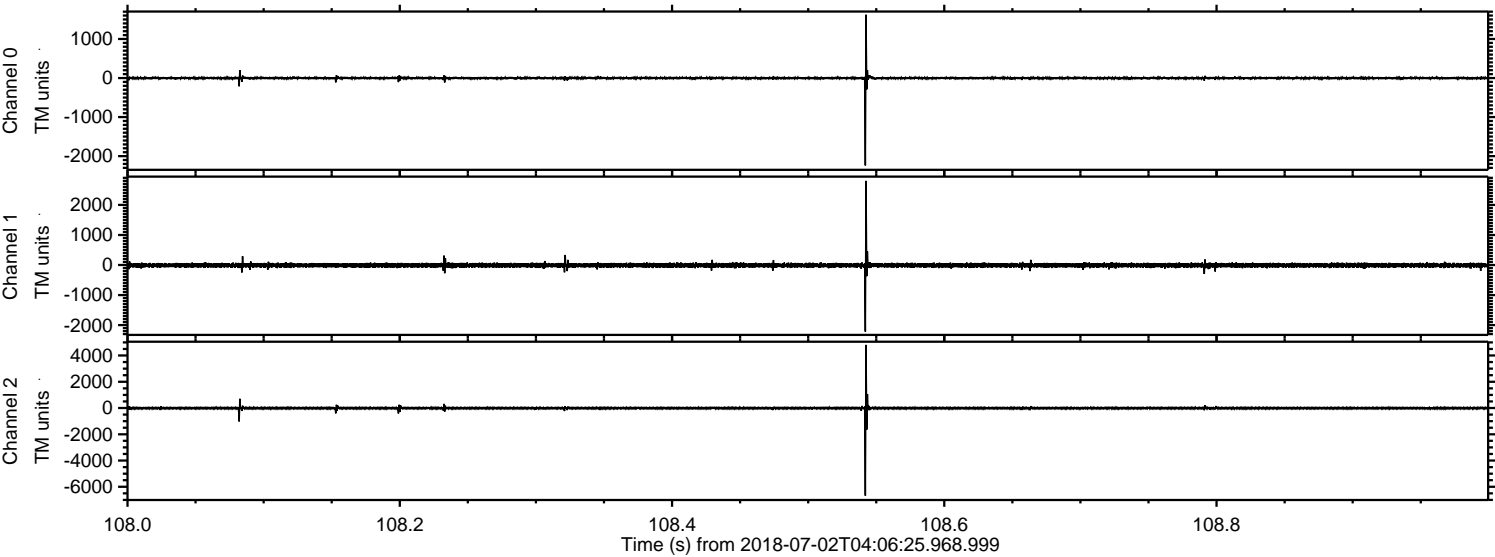


Processed Mon Jul 2 06:14:55 2018 by ELM ver.2012-10-06 from 001__elm20180702_040624__dat00.bin



ELMAVAN 3D WAVEFORMS (Measured data sampled at 50 kHz) 51000 packets of 144 samples from 2018-07-02T04:06:25.968.999. Part 109/147

Processed Mon Jul 2 06:14:56 2018 by ELM ver.2012-10-06 from 001__elm20180702_040624__dat00.bin



Channel 0
mn: -2239
mx: 1622
 μ : -1.4
 σ : 23.0

Channel 1
mn: -2216
mx: 2801
 μ : -10.7
 σ : 45.2

Channel 2
mn: -6672
mx: 4810
 μ : -12.6
 σ : 78.0

Processed Mon Jul 2 06:14:56 2018 by ELM ver.2012-10-06 from 001__elm20180702_040624__dat00.bin

