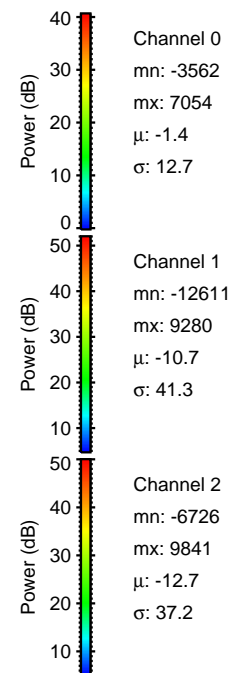
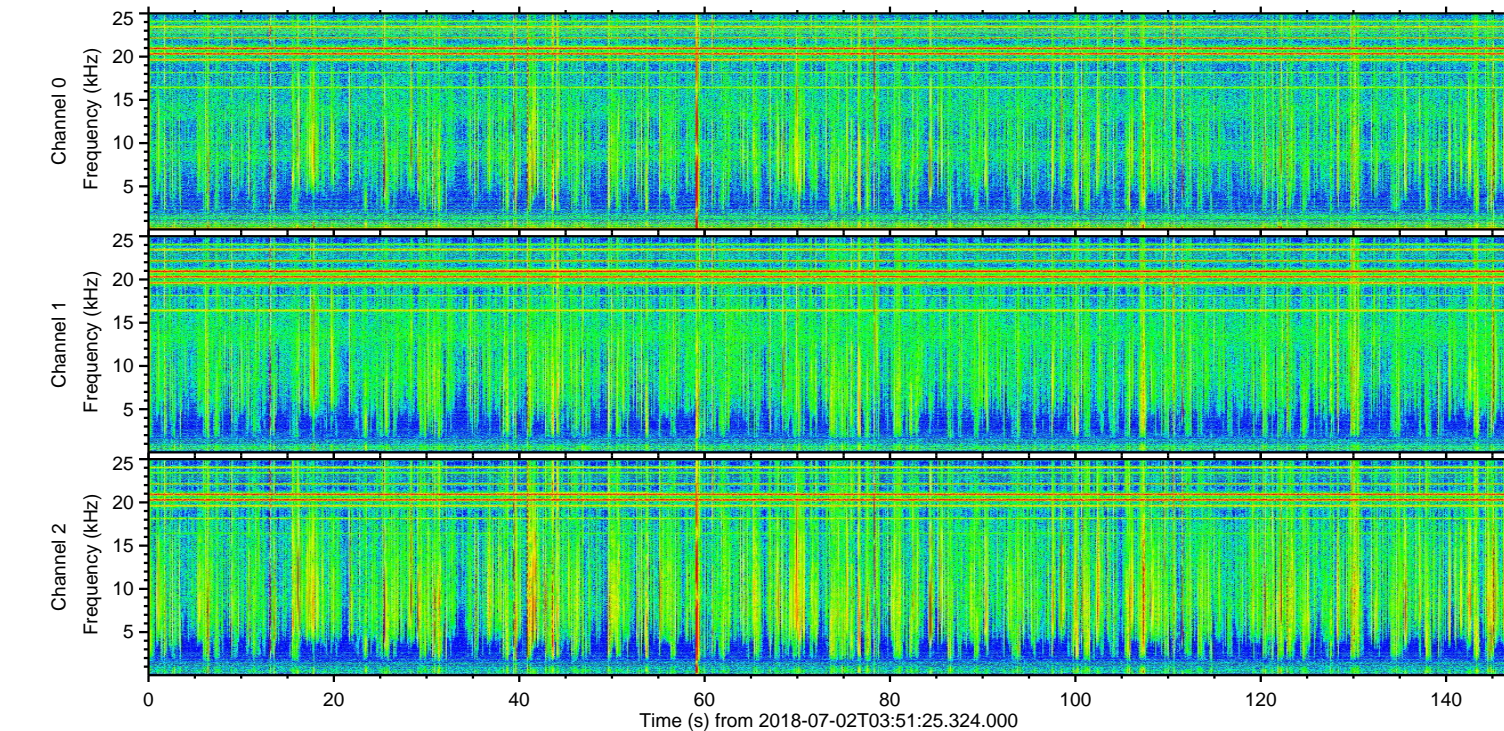
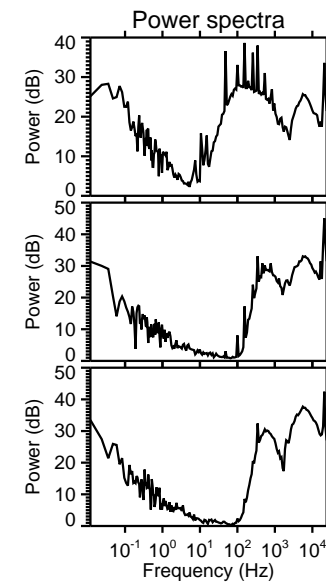
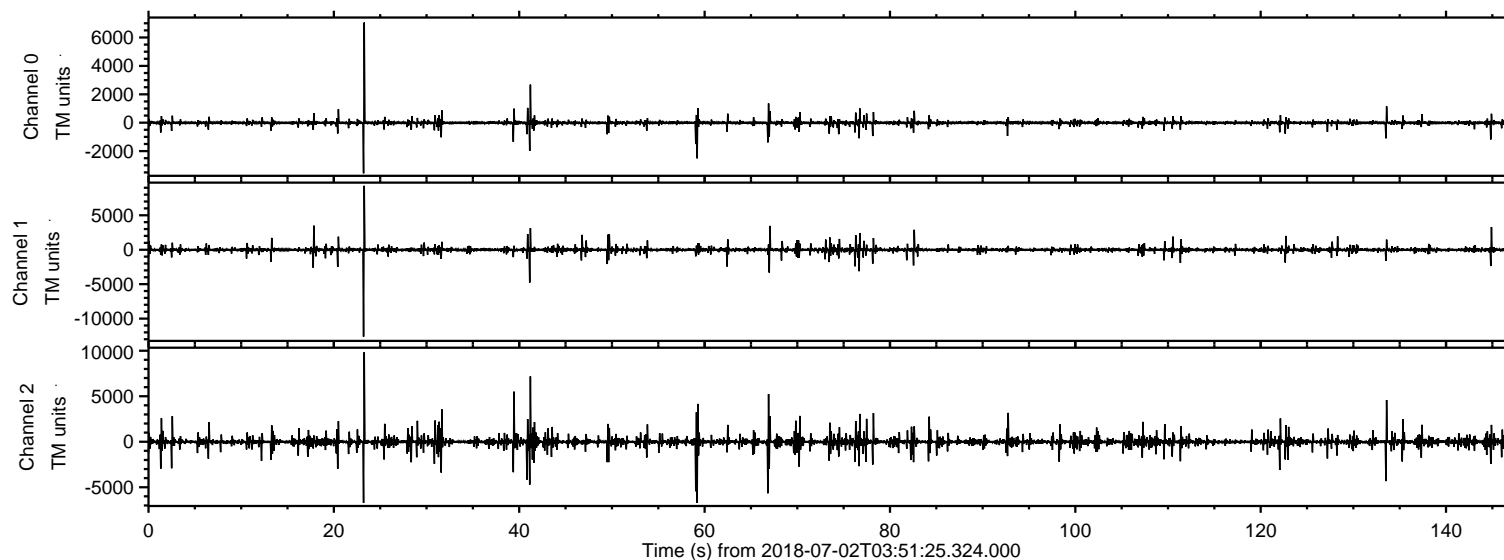


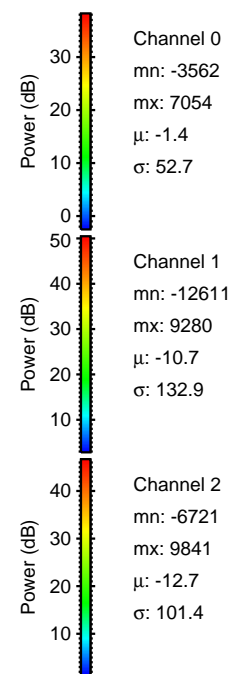
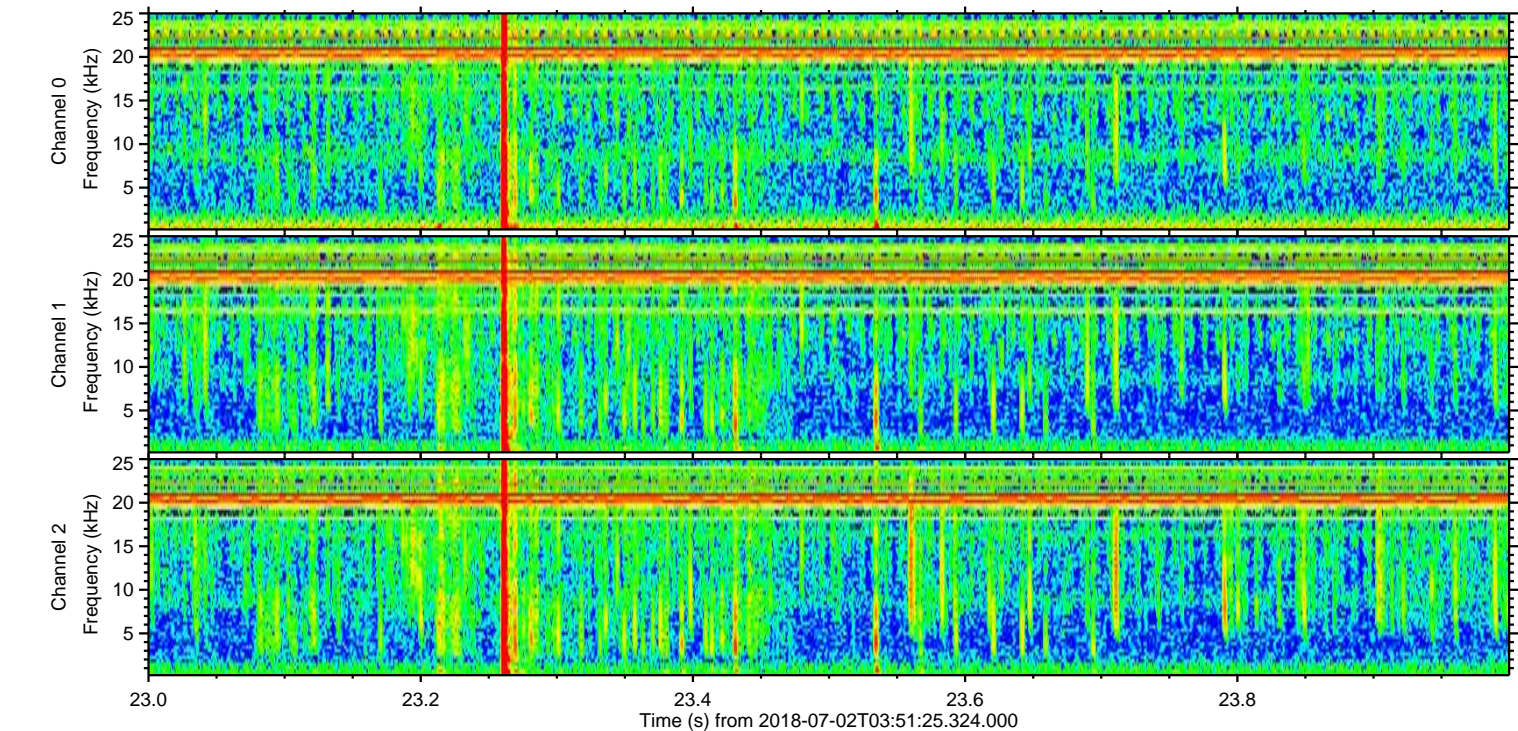
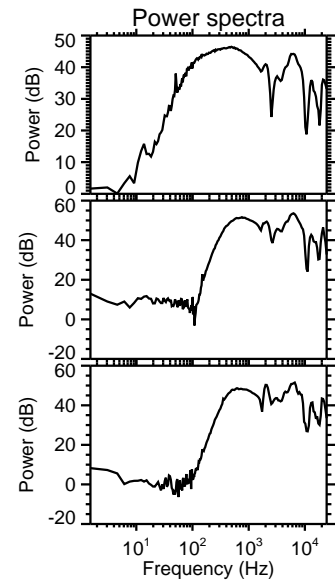
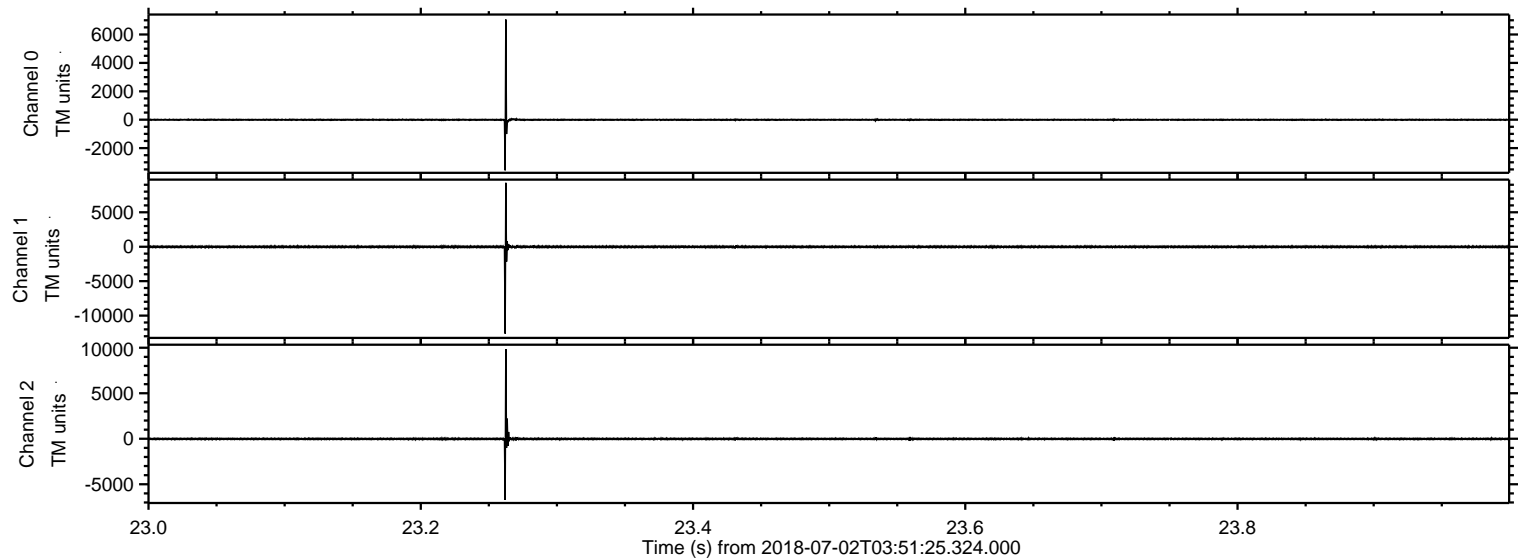
ELMAVAN 3D WAVEFORMS (Measured data sampled at 50 kHz) 51000 packets of 144 samples from 2018-07-02T03:51:25.324.000.

Processed Mon Jul 2 05:59:38 2018 by ELM ver.2012-10-06 from 001__elm20180702_035124__dat00.bin

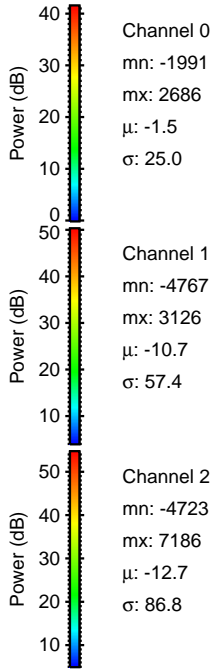
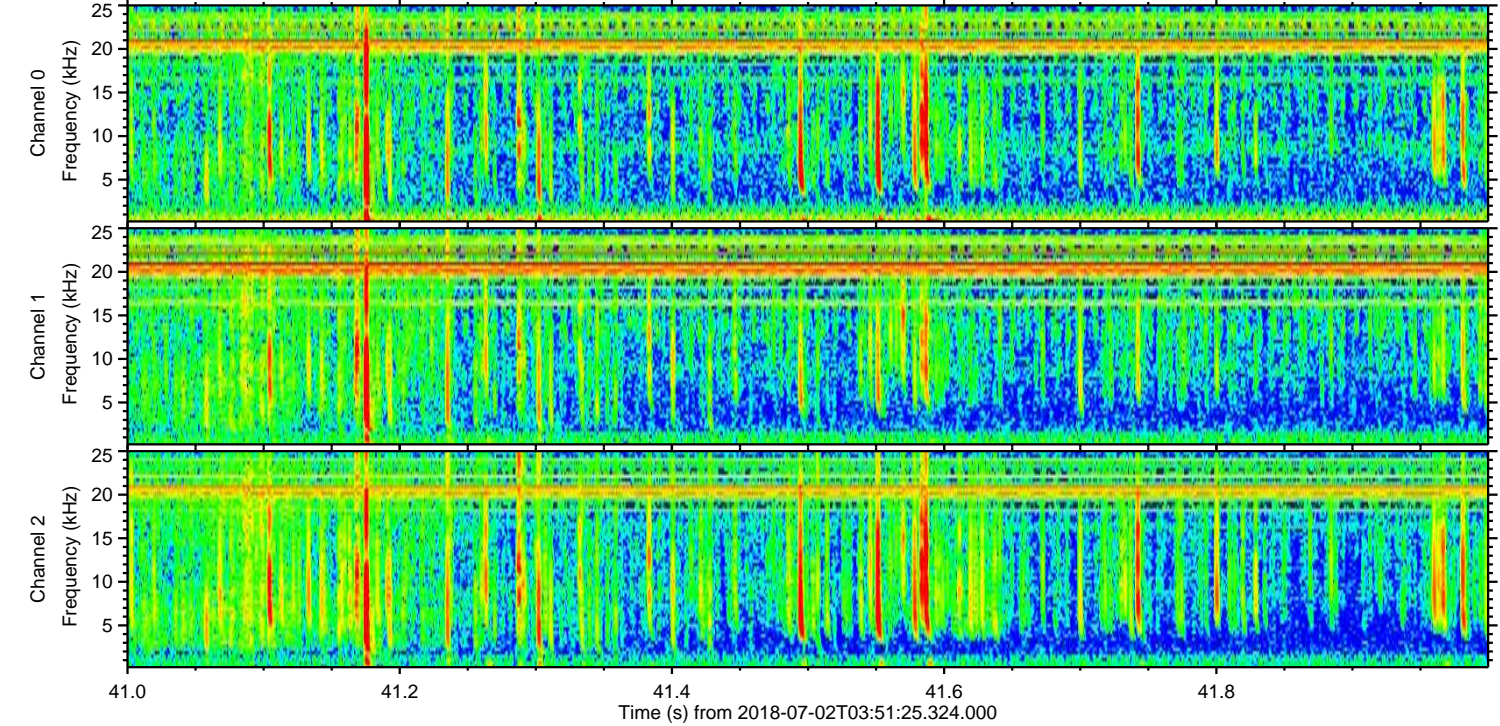
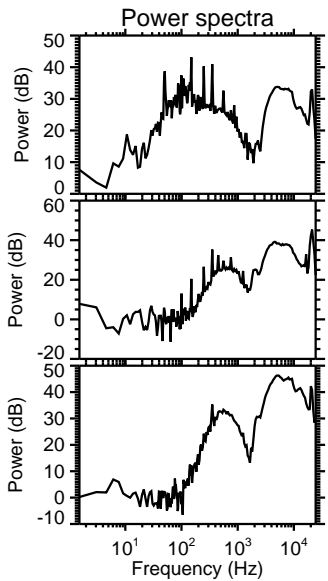
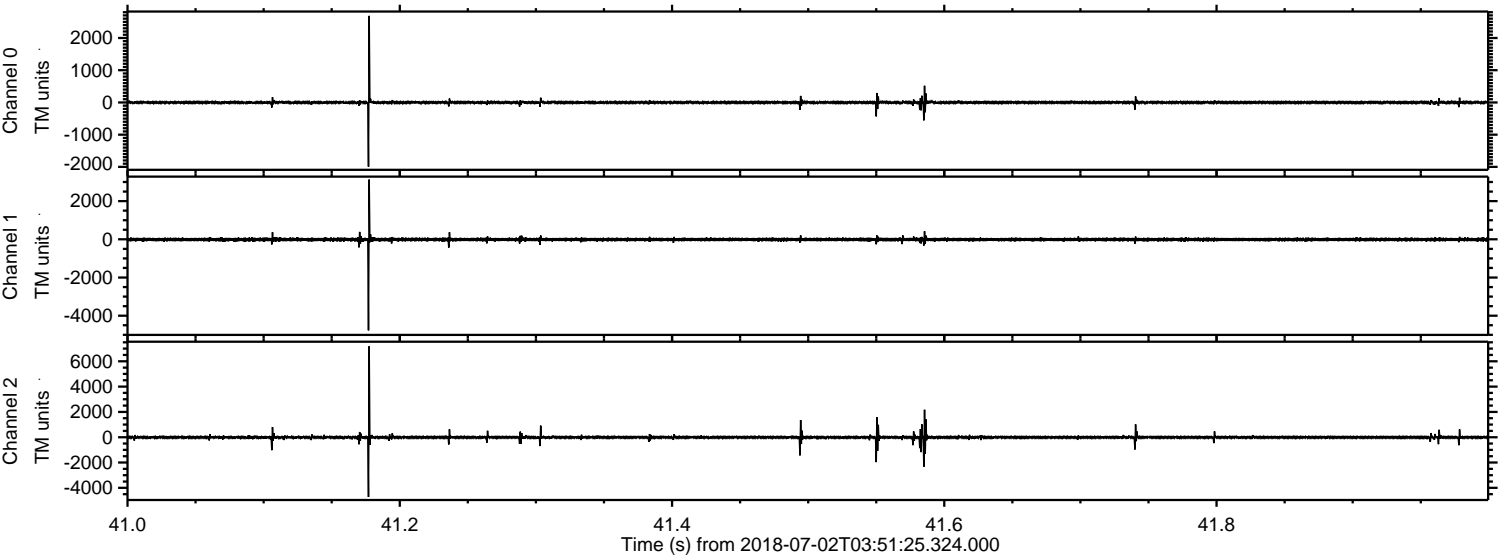


ELMAVAN 3D WAVEFORMS (Measured data sampled at 50 kHz) 51000 packets of 144 samples from 2018-07-02T03:51:25.324.000. Part 24/147

Processed Mon Jul 2 05:59:45 2018 by ELM ver.2012-10-06 from 001__elm20180702_035124__dat00.bin

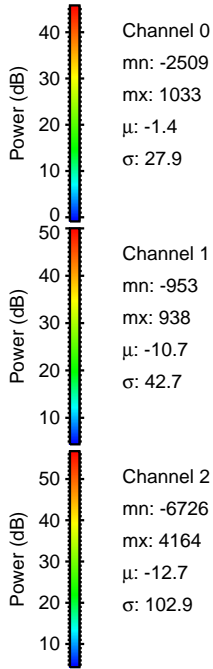
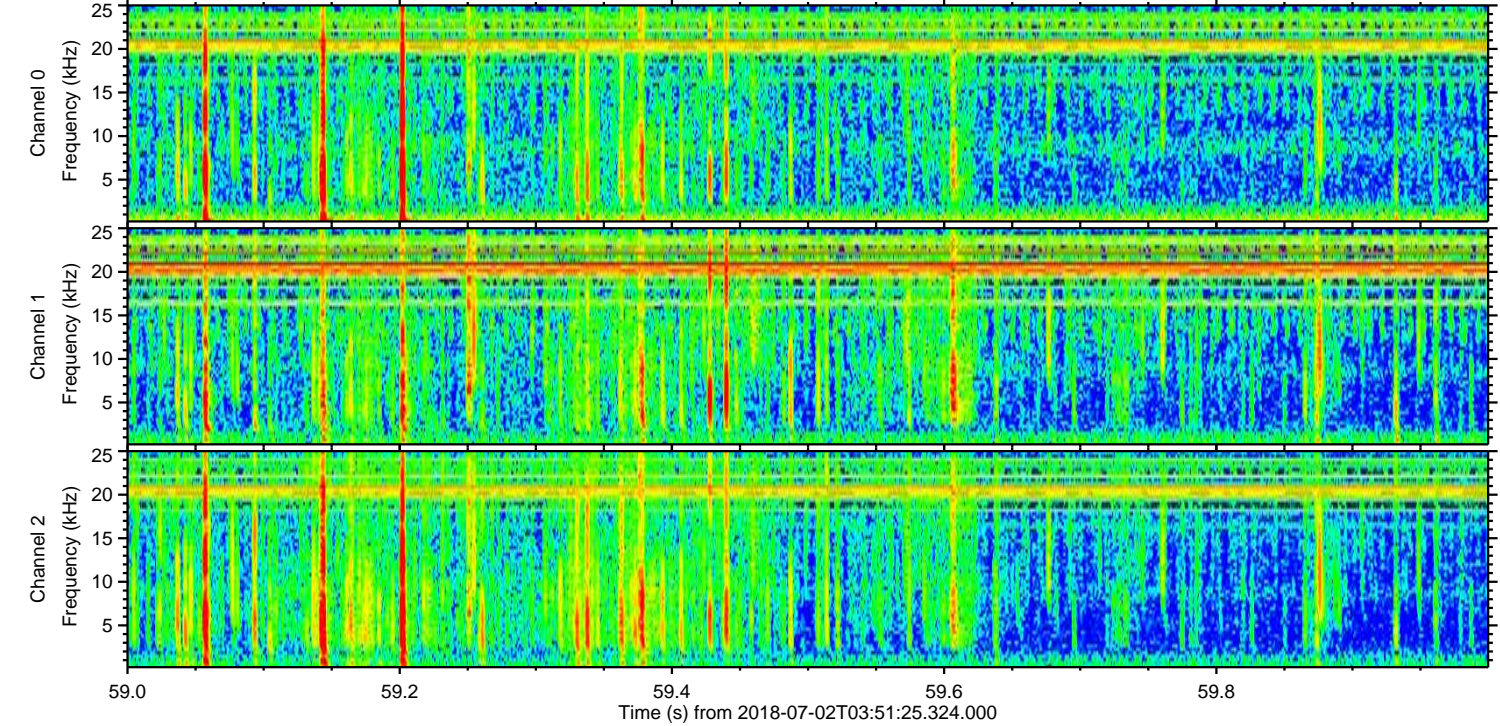
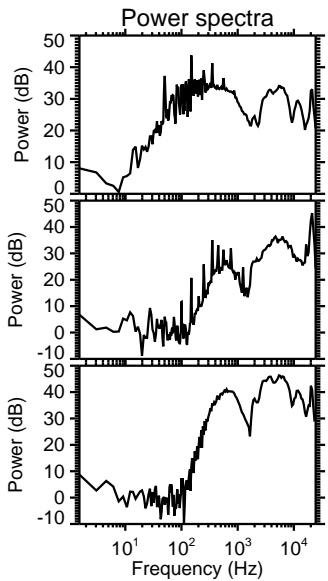
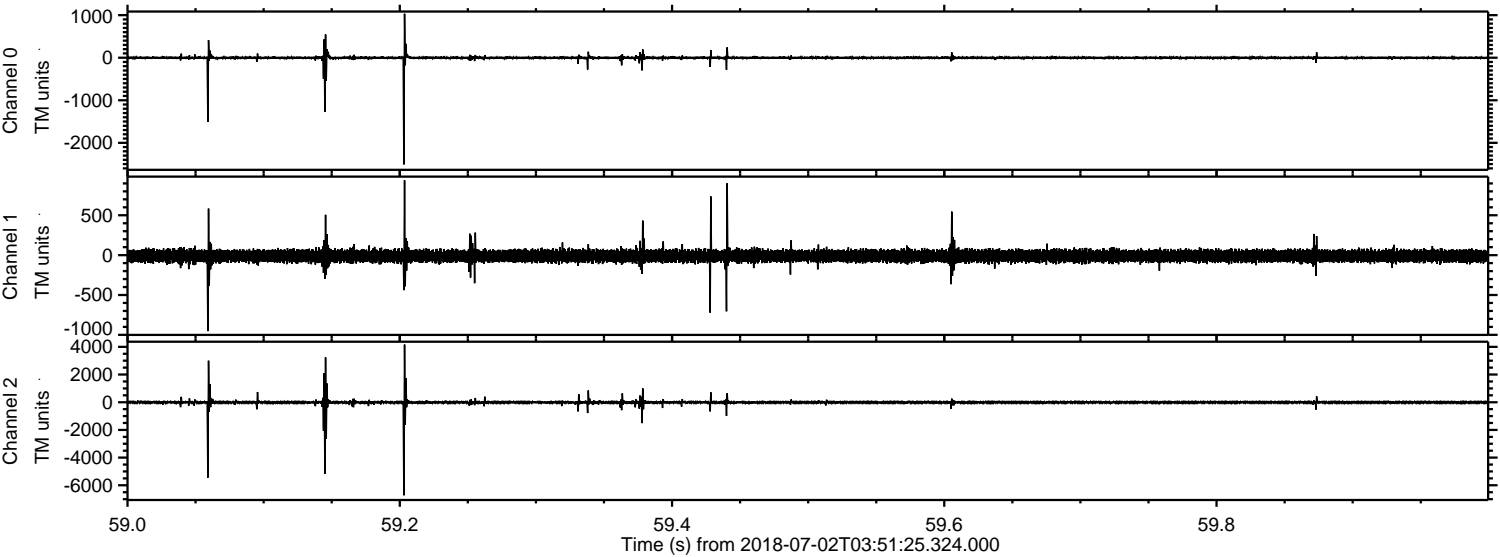


Processed Mon Jul 2 05:59:46 2018 by ELM ver.2012-10-06 from 001__elm20180702_035124__dat00.bin



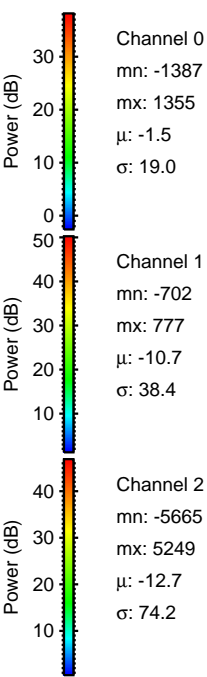
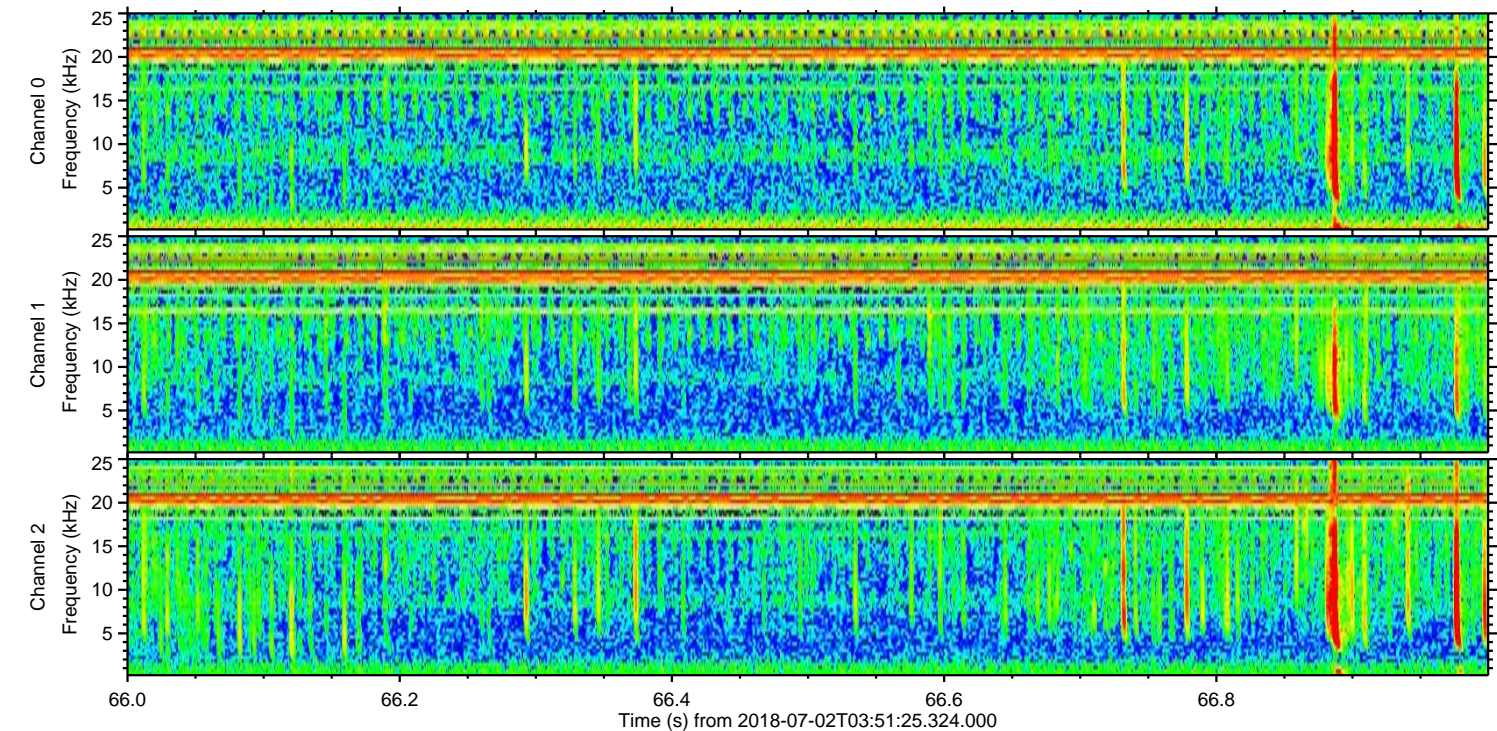
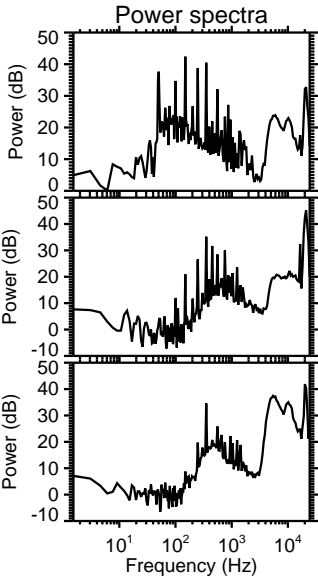
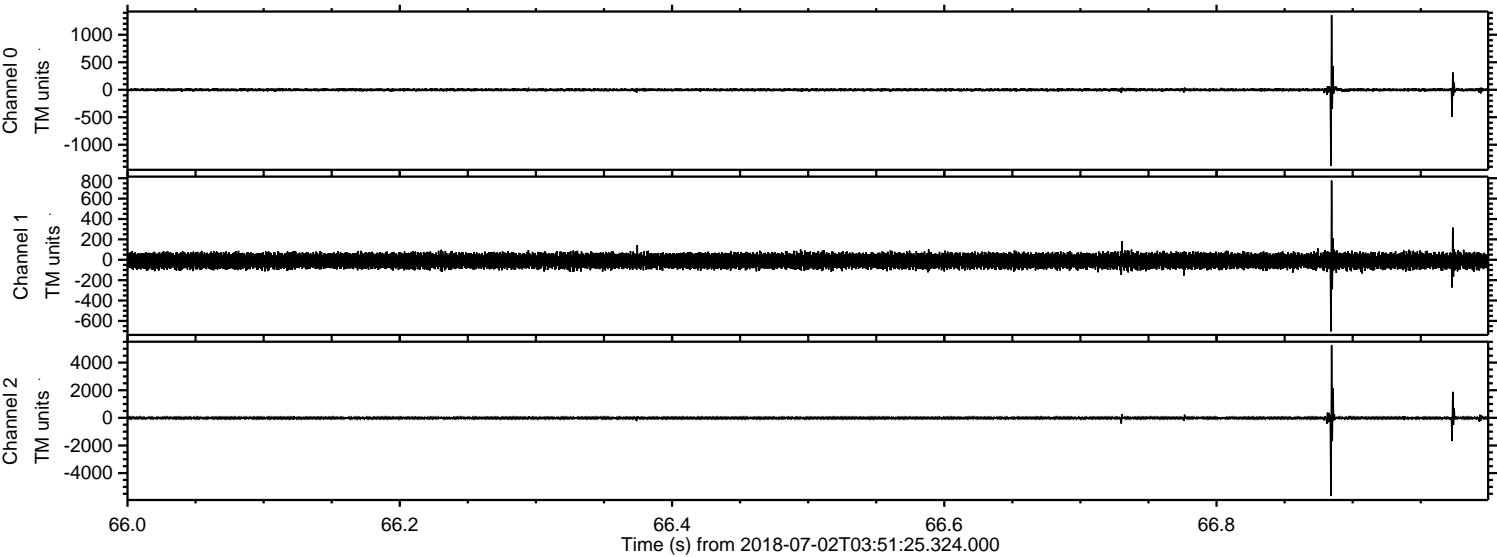
ELMAVAN 3D WAVEFORMS (Measured data sampled at 50 kHz) 51000 packets of 144 samples from 2018-07-02T03:51:25.324.000. Part 60/147

Processed Mon Jul 2 05:59:47 2018 by ELM ver.2012-10-06 from 001__elm20180702_035124__dat00.bin



ELMAVAN 3D WAVEFORMS (Measured data sampled at 50 kHz) 51000 packets of 144 samples from 2018-07-02T03:51:25.324.000. Part 67/147

Processed Mon Jul 2 05:59:48 2018 by ELM ver.2012-10-06 from 001__elm20180702_035124__dat00.bin



Channel 0

mn: -1387
mx: 1355
 μ : -1.5
 σ : 19.0

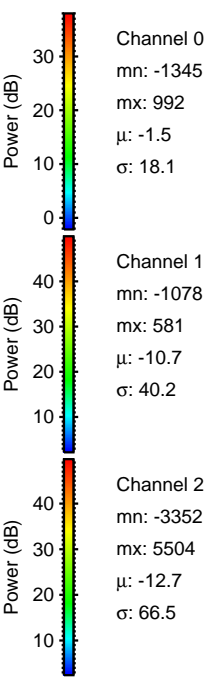
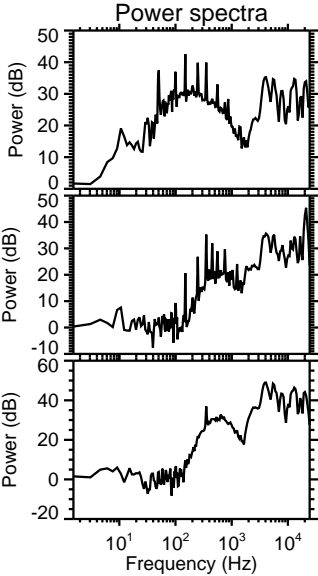
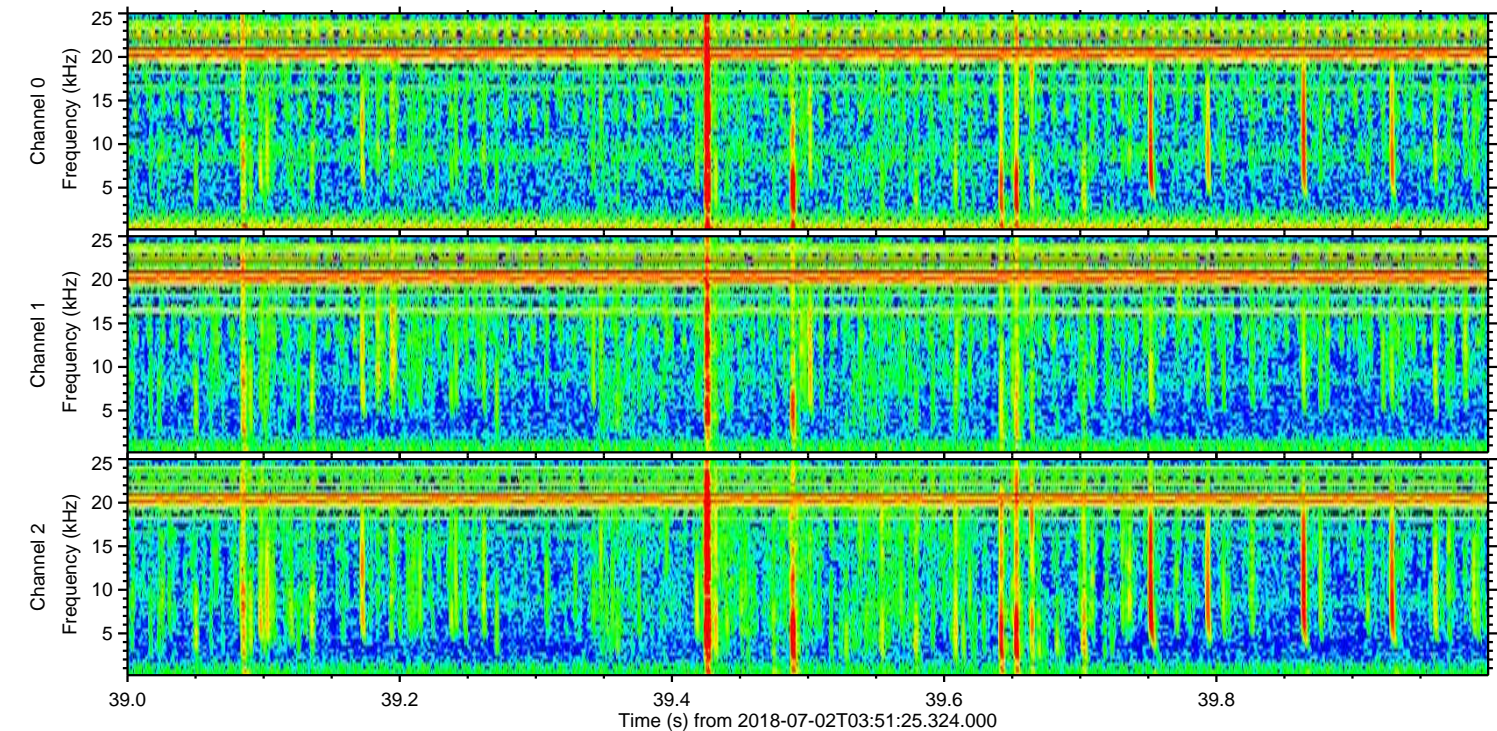
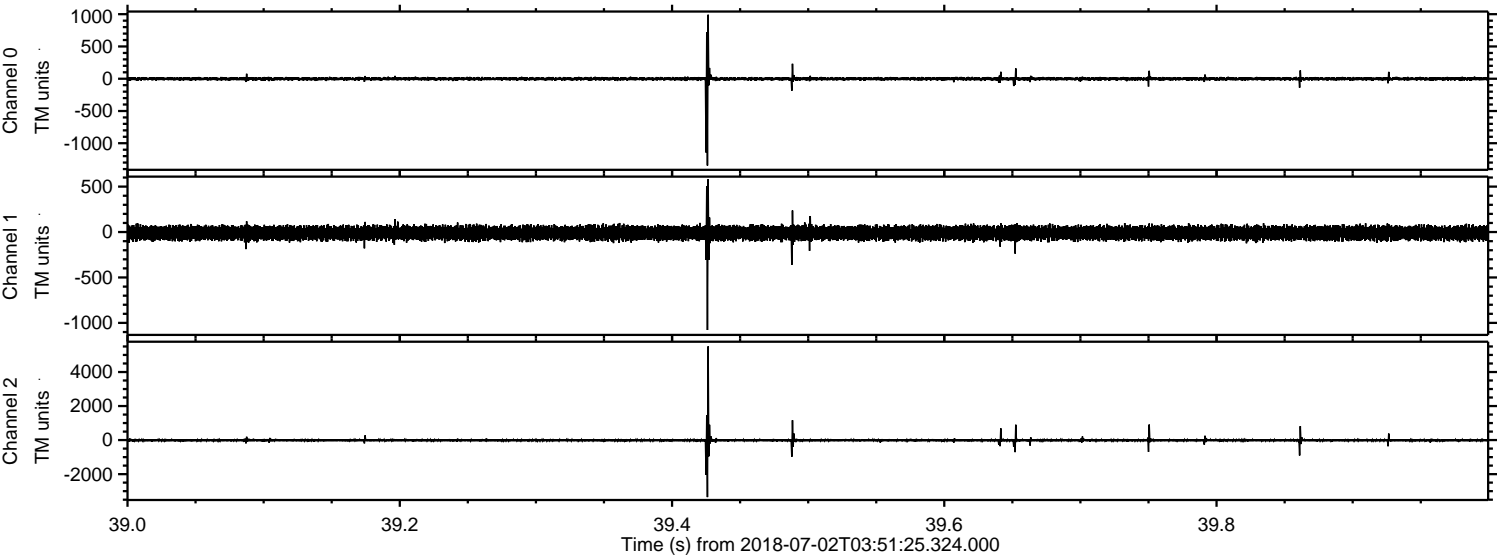
Channel 1

mn: -702
mx: 777
 μ : -10.7
 σ : 38.4

Channel 2

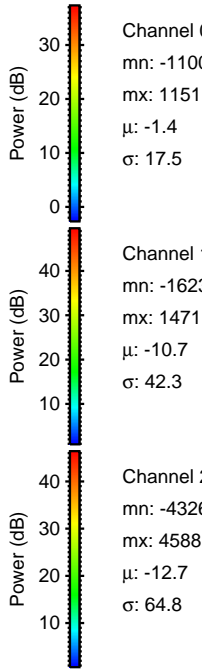
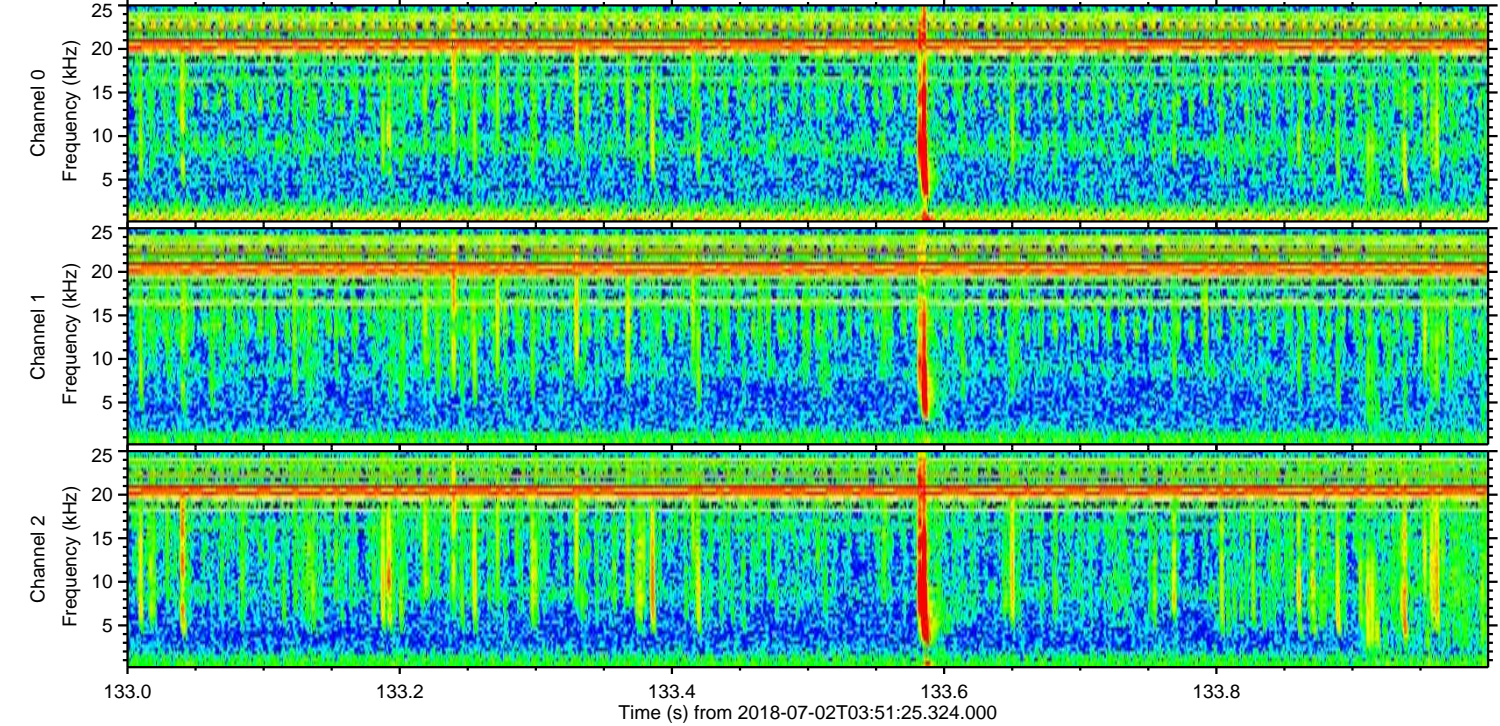
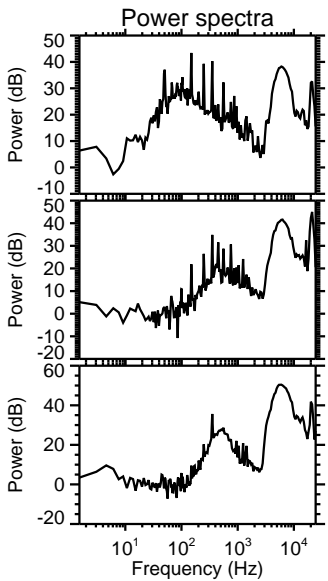
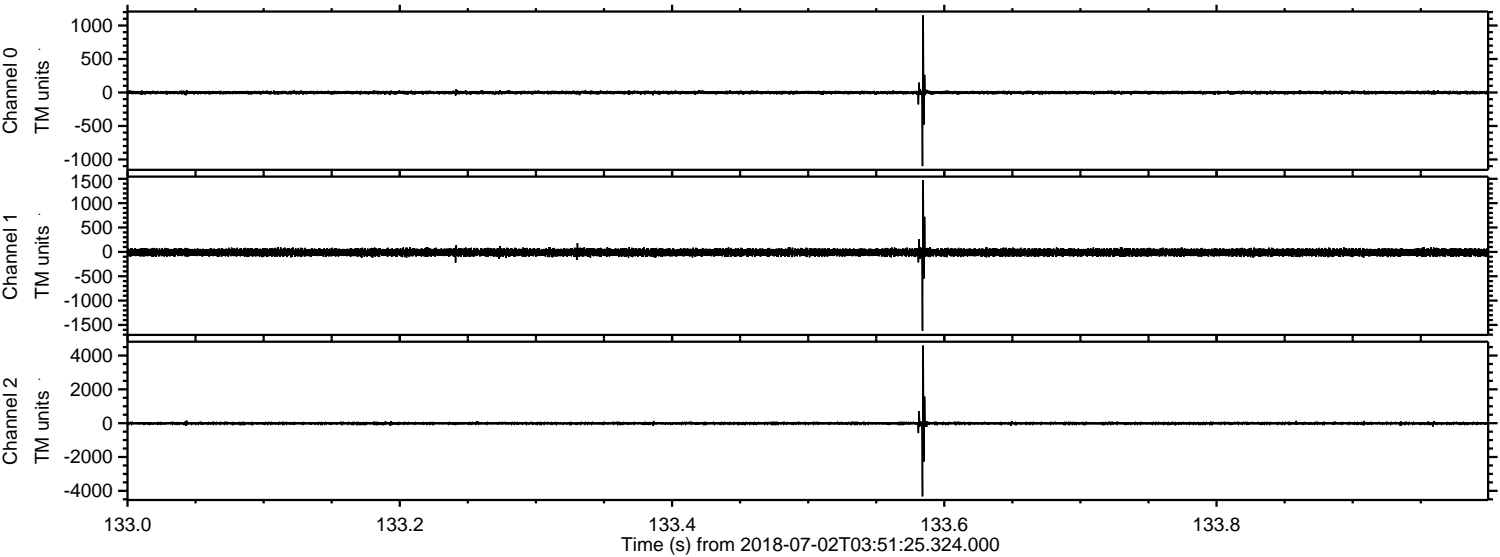
mn: -5665
mx: 5249
 μ : -12.7
 σ : 74.2

Processed Mon Jul 2 05:59:48 2018 by ELM ver.2012-10-06 from 001__elm20180702_035124__dat00.bin



ELMAVAN 3D WAVEFORMS (Measured data sampled at 50 kHz) 51000 packets of 144 samples from 2018-07-02T03:51:25.324.000. Part 134/147

Processed Mon Jul 2 05:59:50 2018 by ELM ver.2012-10-06 from 001__elm20180702_035124__dat00.bin

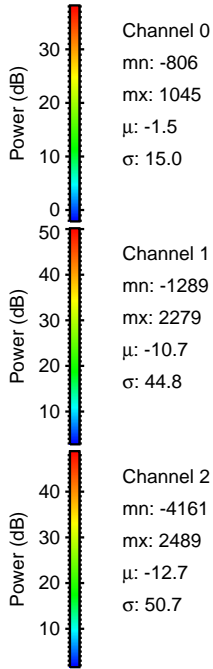
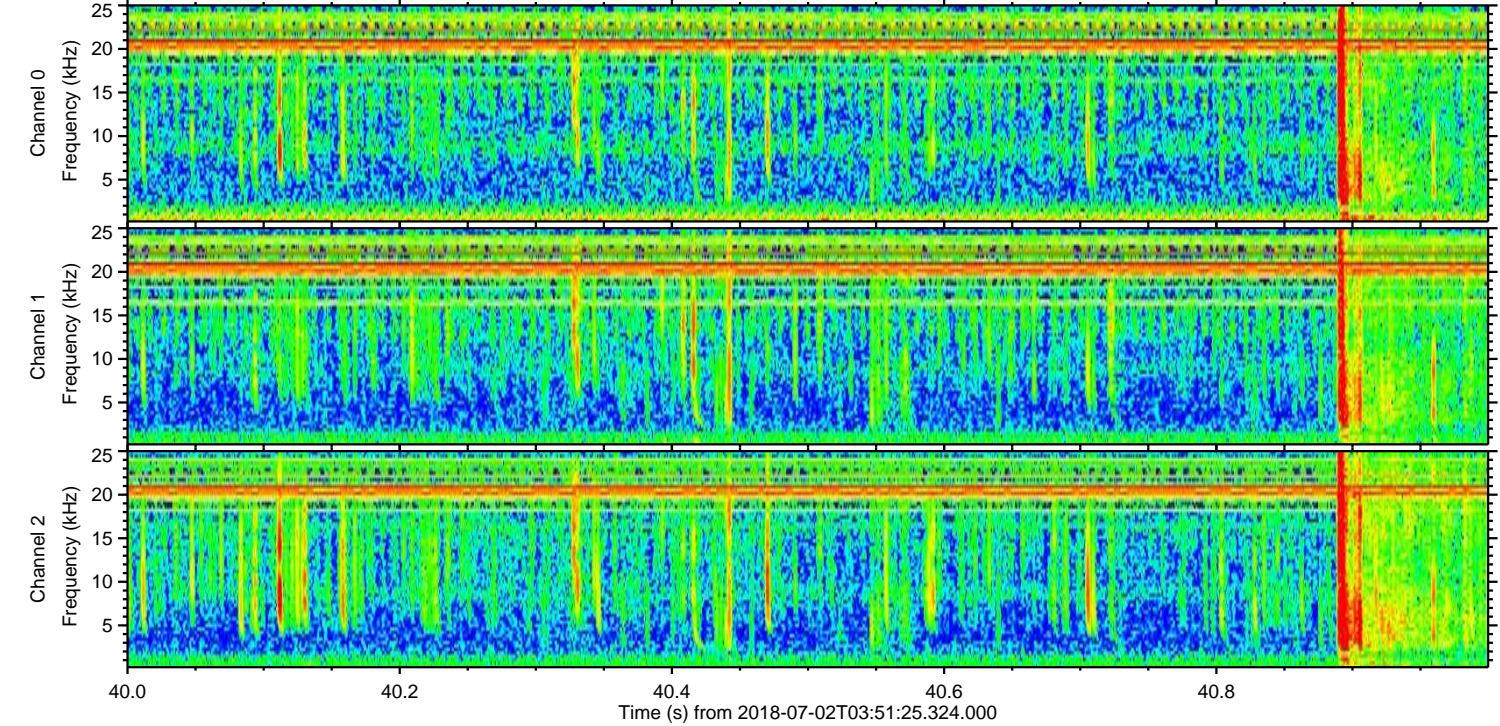
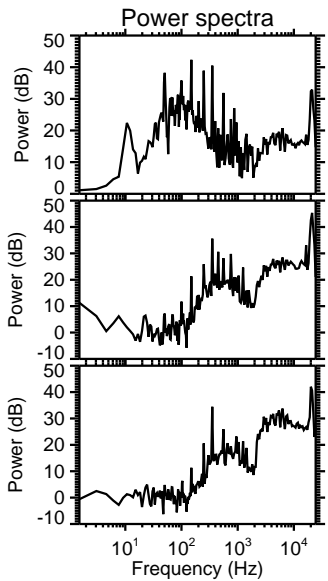
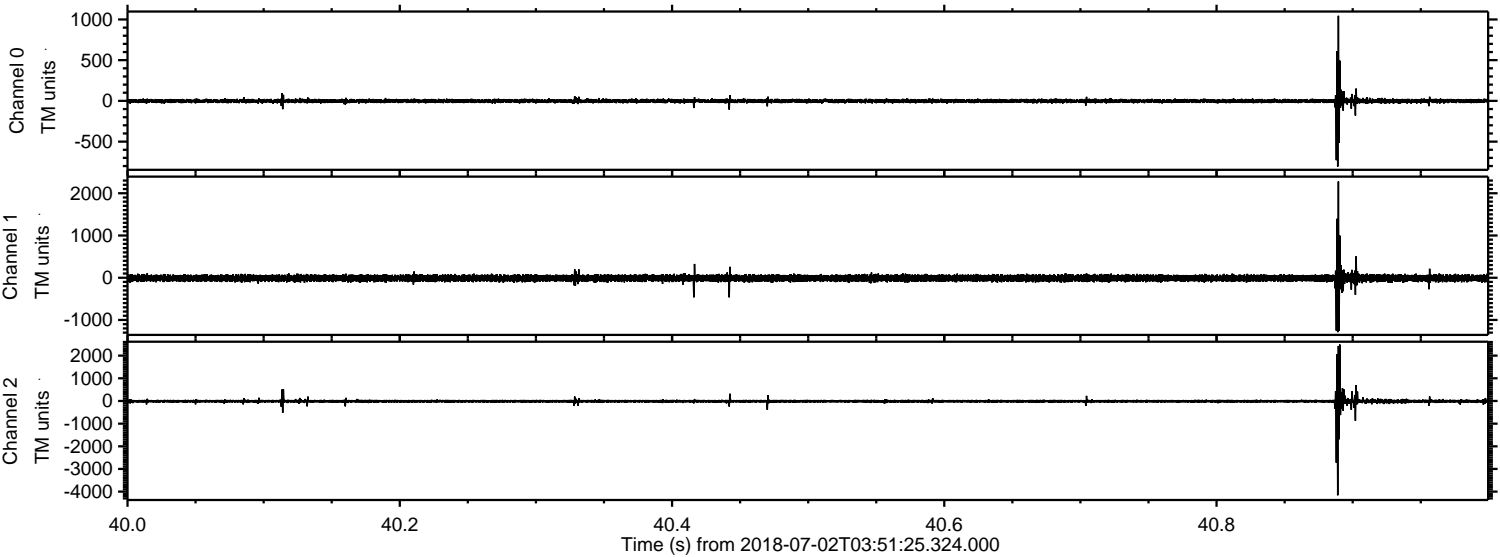


Channel 0
mn: -1100
mx: 1151
 μ : -1.4
 σ : 17.5

Channel 1
mn: -1623
mx: 1471
 μ : -10.7
 σ : 42.3

Channel 2
mn: -4326
mx: 4588
 μ : -12.7
 σ : 64.8

Processed Mon Jul 2 05:59:51 2018 by ELM ver.2012-10-06 from 001__elm20180702_035124__dat00.bin

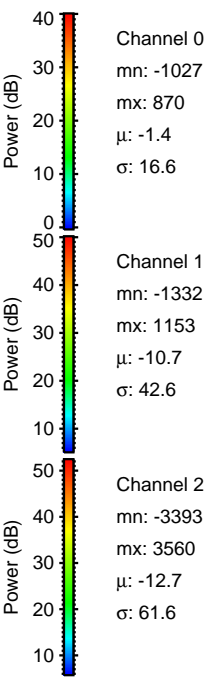
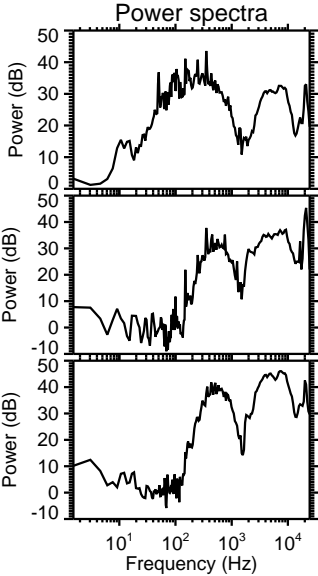
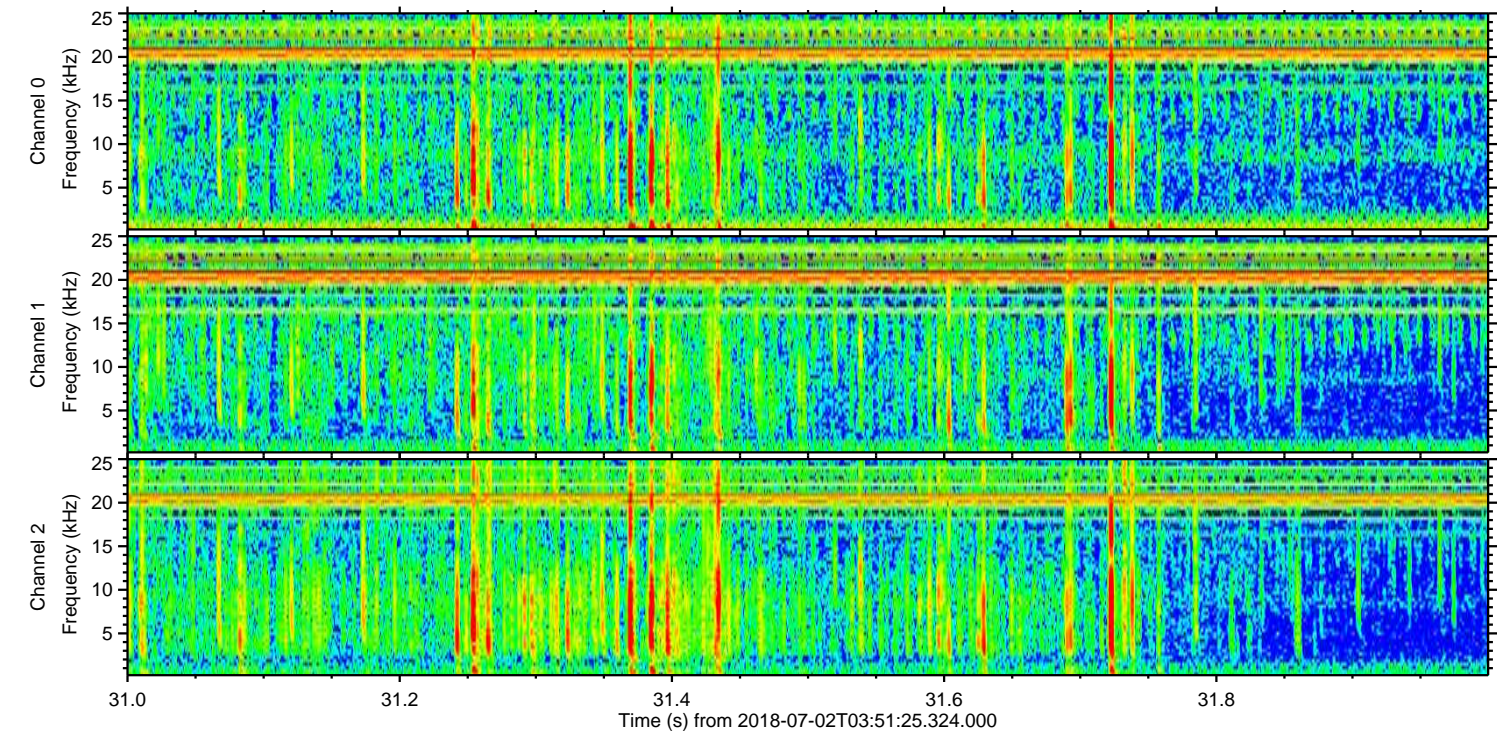
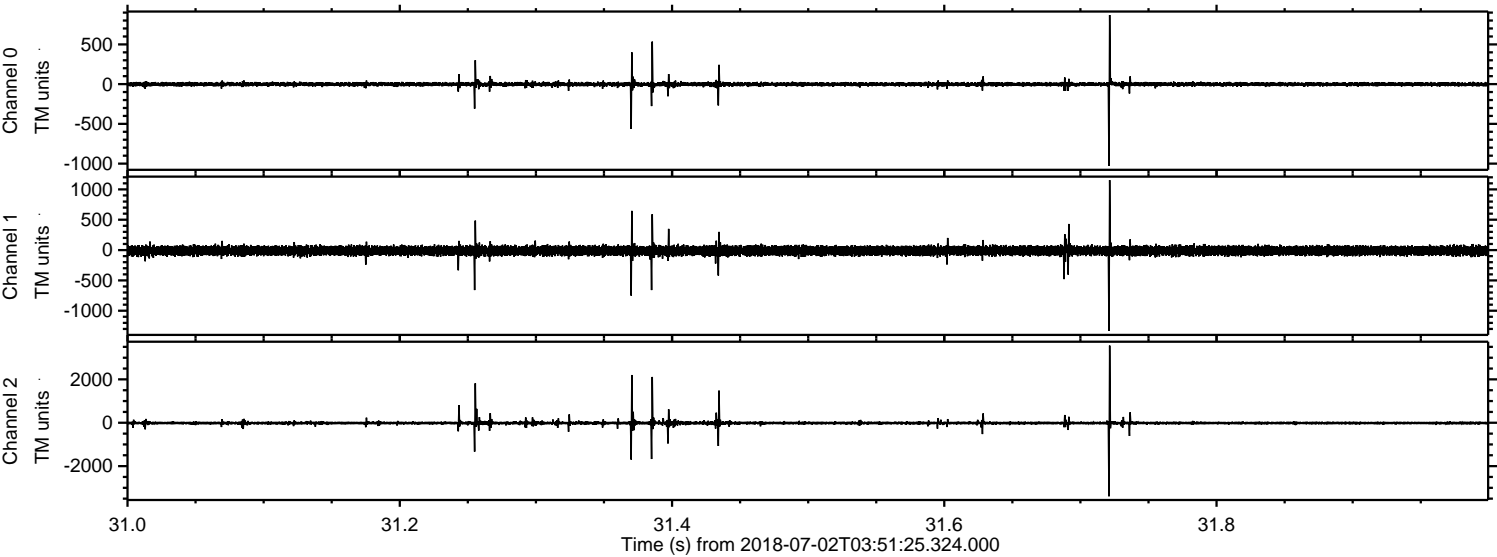


Channel 0
mn: -806
mx: 1045
 μ : -1.5
 σ : 15.0

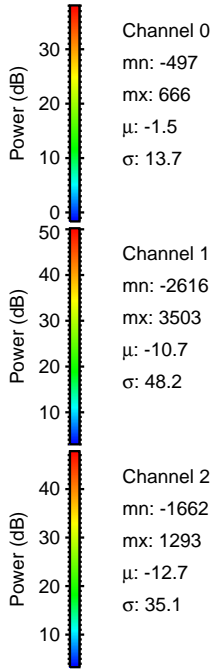
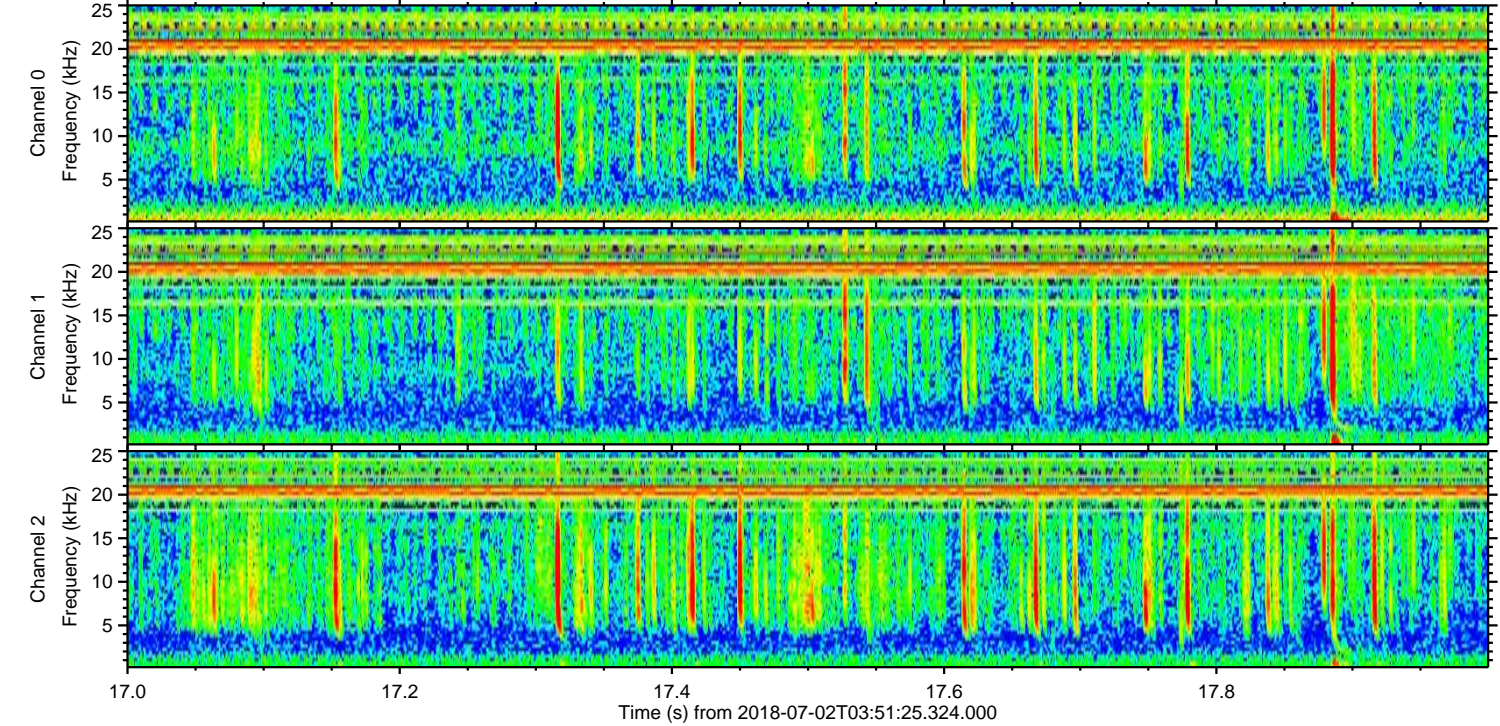
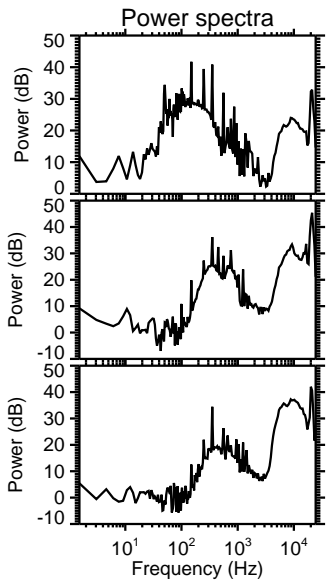
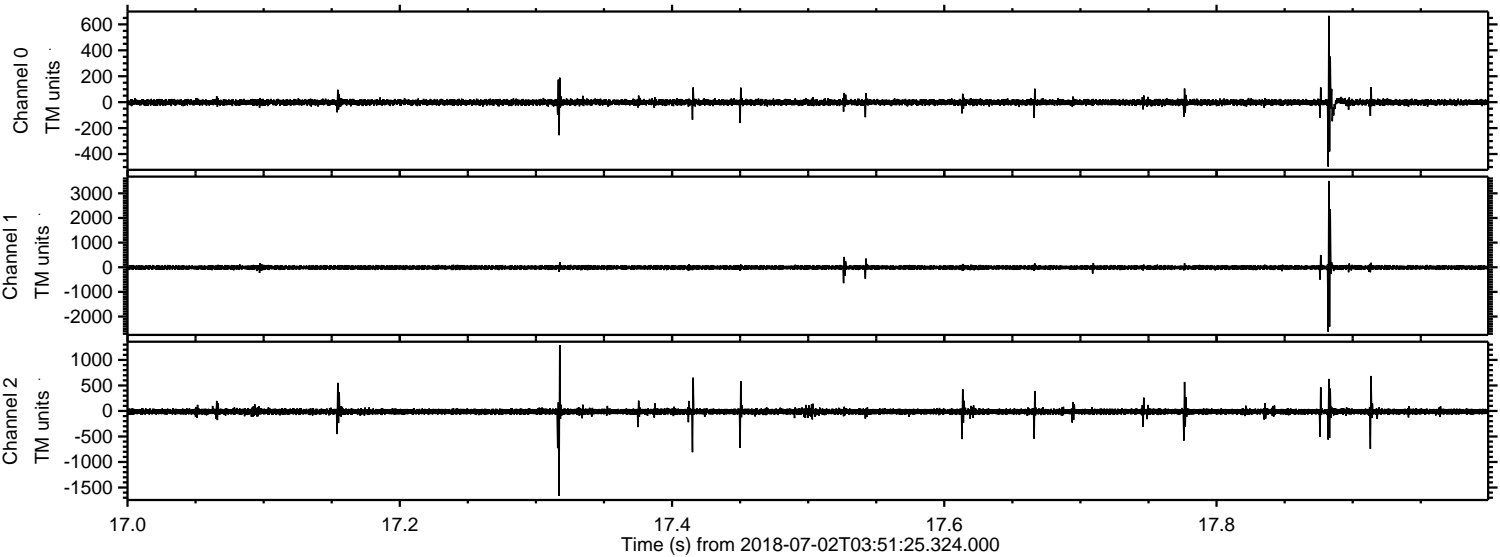
Channel 1
mn: -1289
mx: 2279
 μ : -10.7
 σ : 44.8

Channel 2
mn: -4161
mx: 2489
 μ : -12.7
 σ : 50.7

Processed Mon Jul 2 05:59:51 2018 by ELM ver.2012-10-06 from 001__elm20180702_035124__dat00.bin



Processed Mon Jul 2 05:59:52 2018 by ELM ver.2012-10-06 from 001__elm20180702_035124__dat00.bin



Processed Mon Jul 2 05:59:53 2018 by ELM ver.2012-10-06 from 001__elm20180702_035124__dat00.bin

