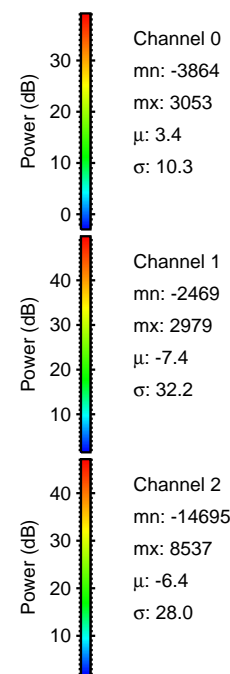
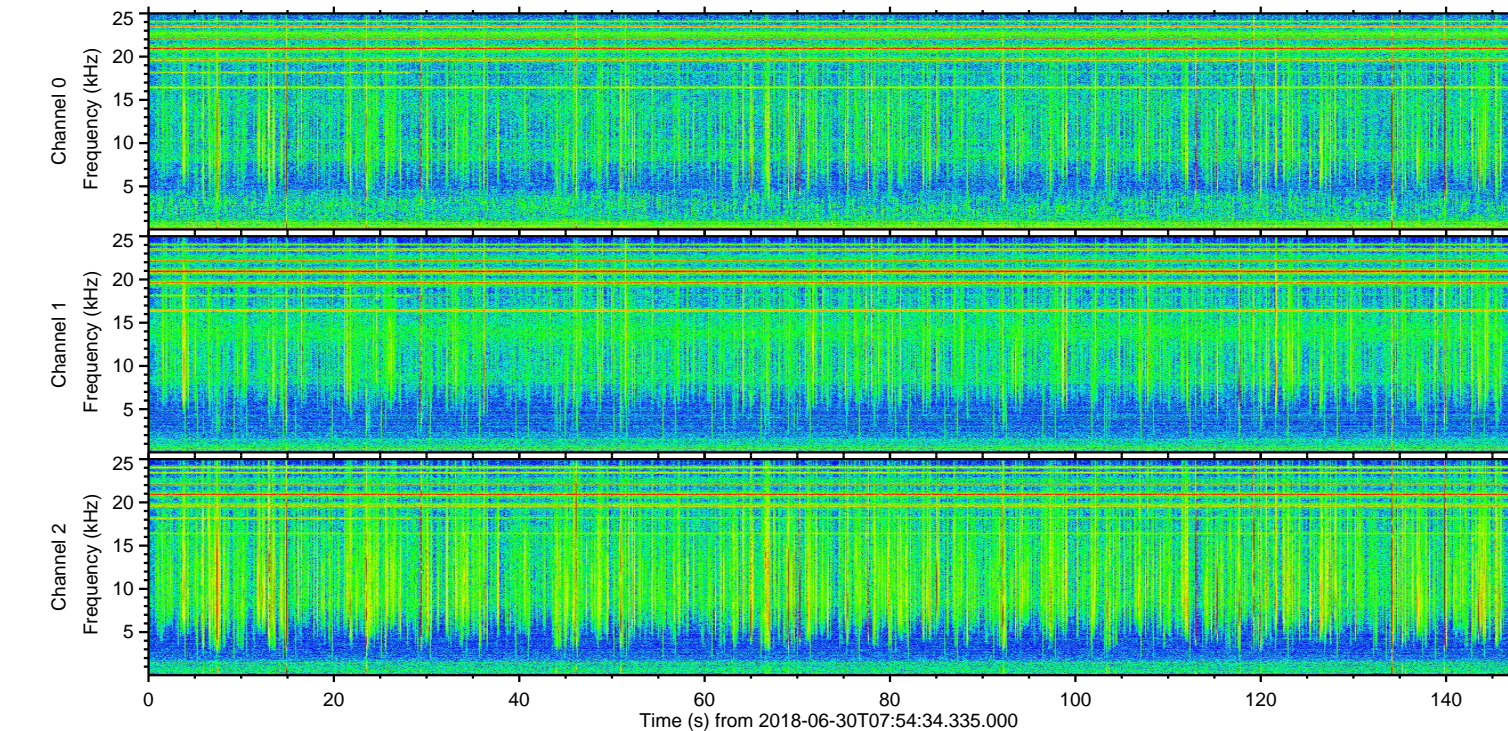
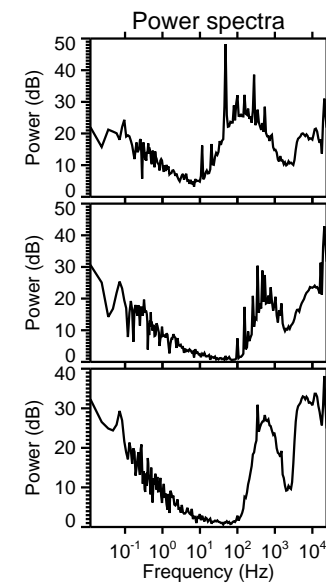
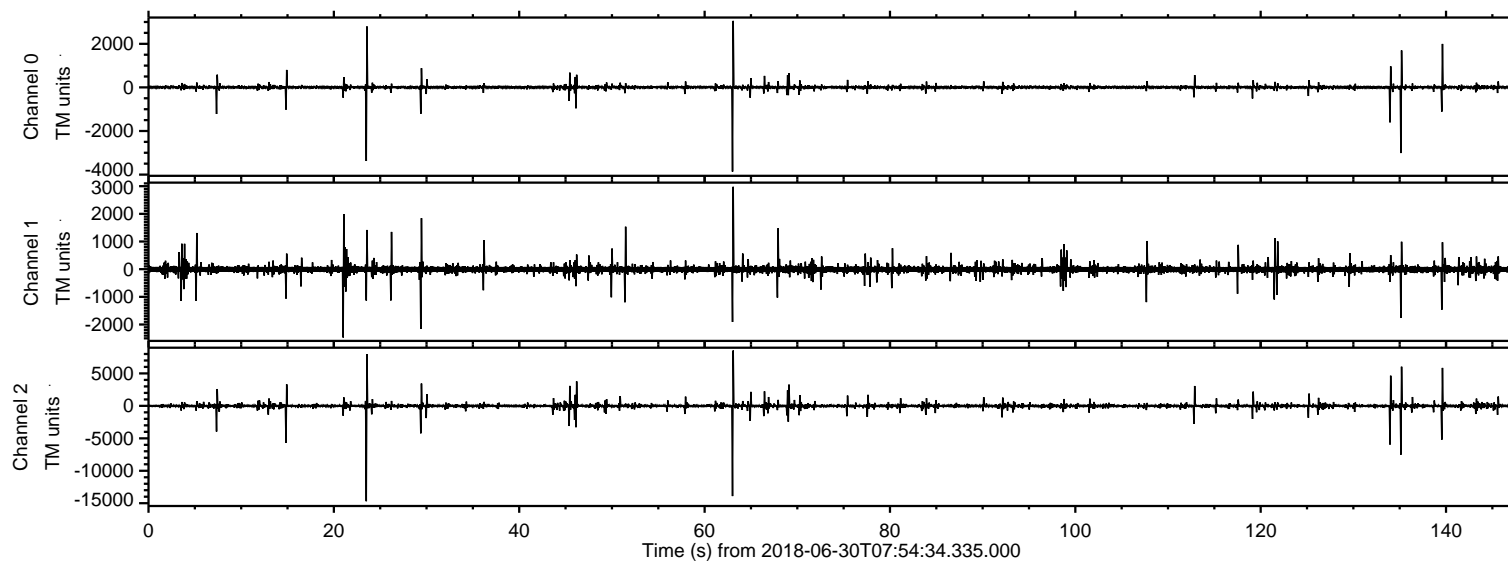
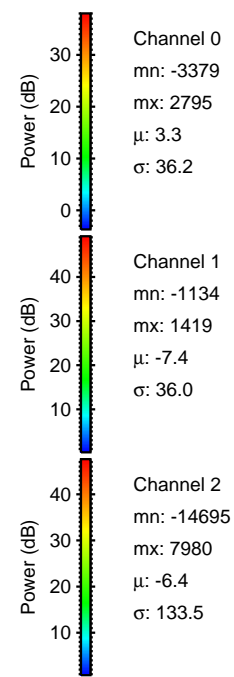
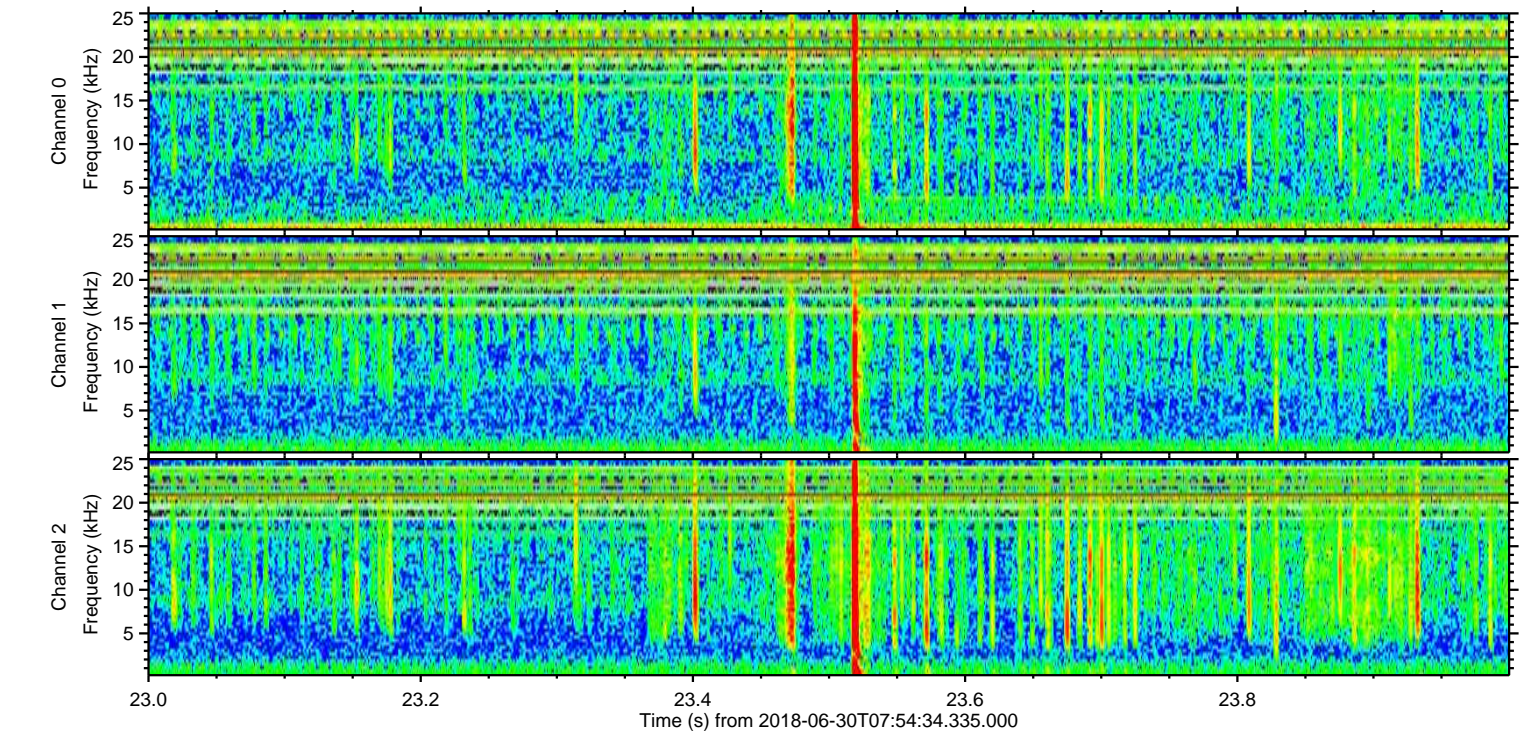
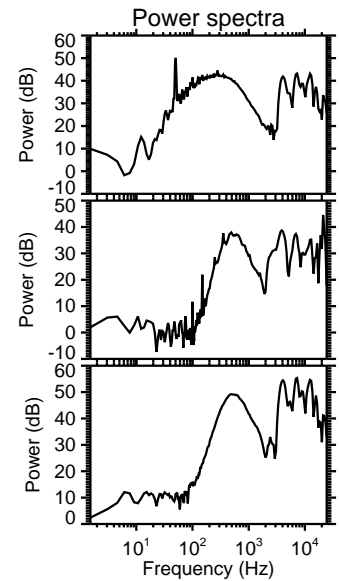
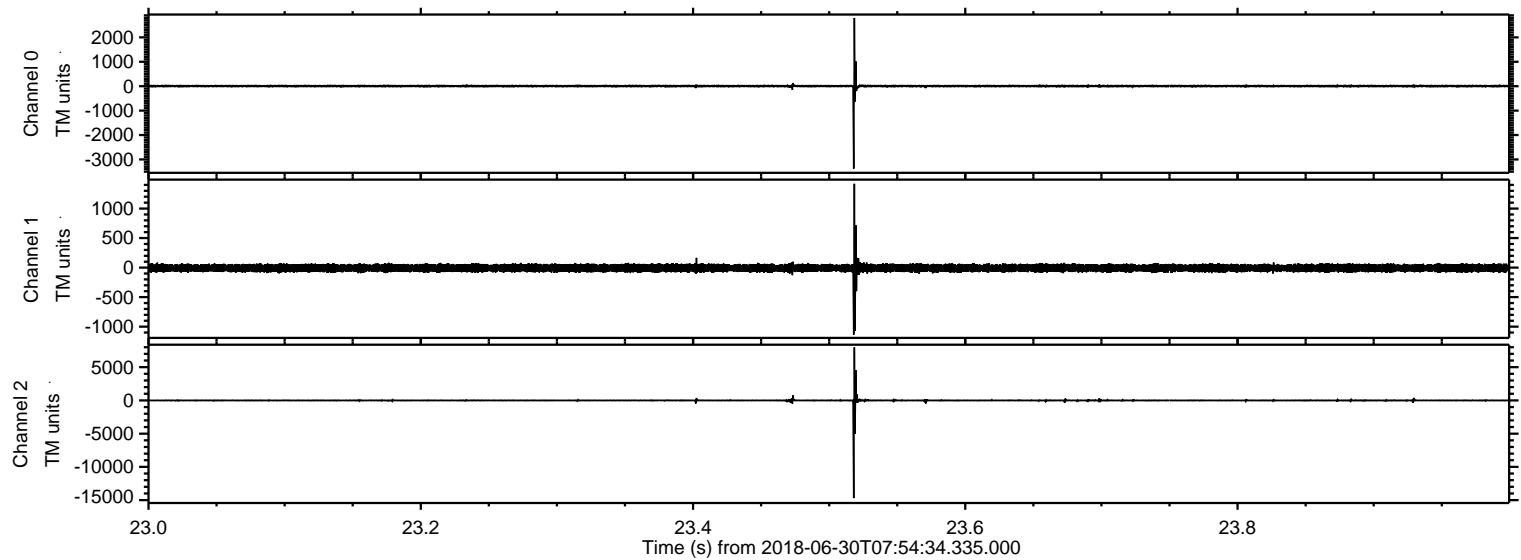


ELMAVAN 3D WAVEFORMS (Measured data sampled at 50 kHz) 51000 packets of 144 samples from 2018-06-30T07:54:34.335.000.

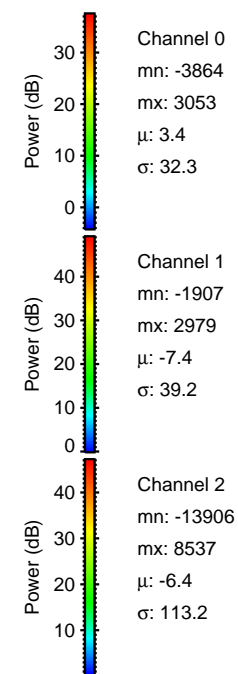
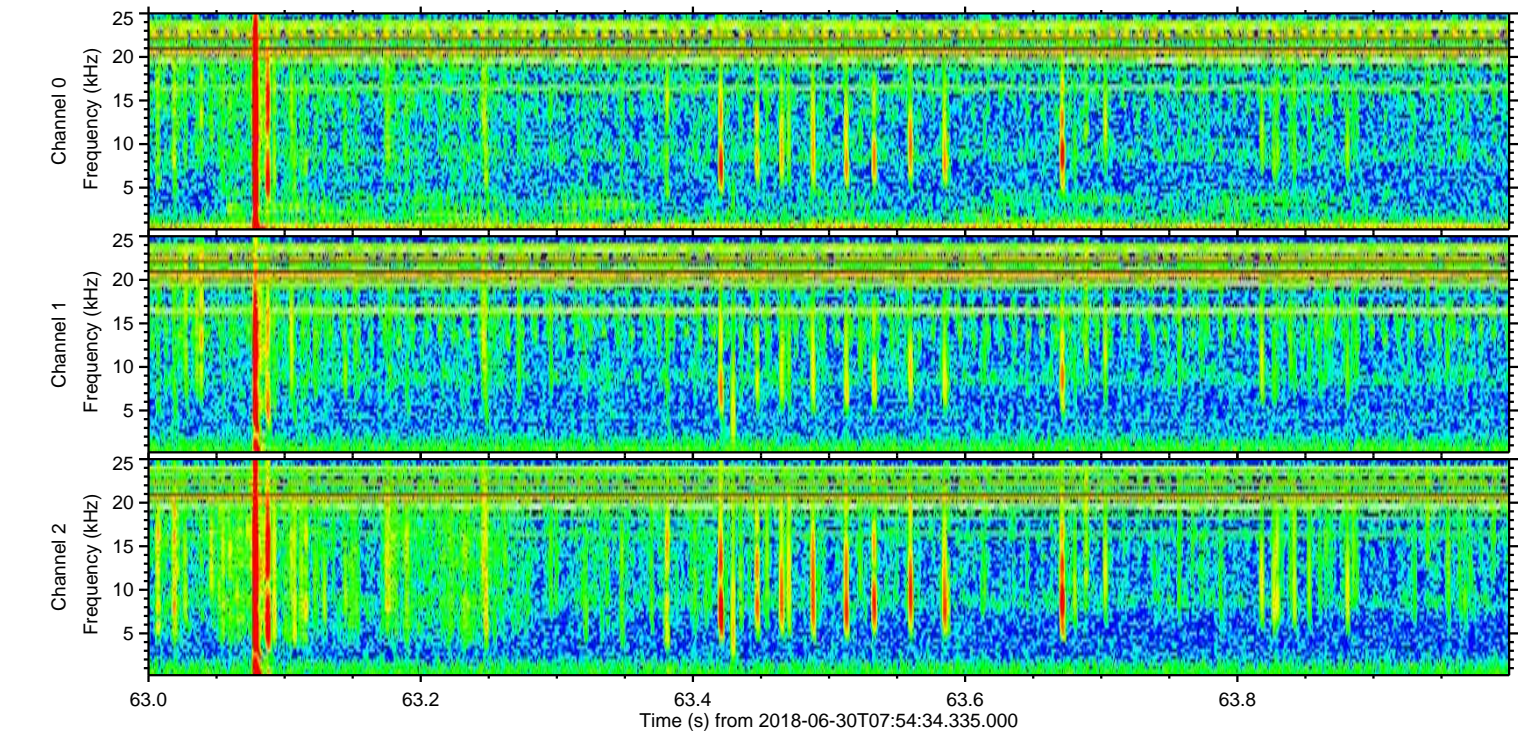
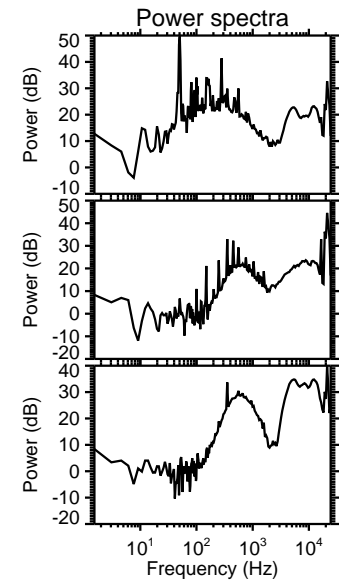
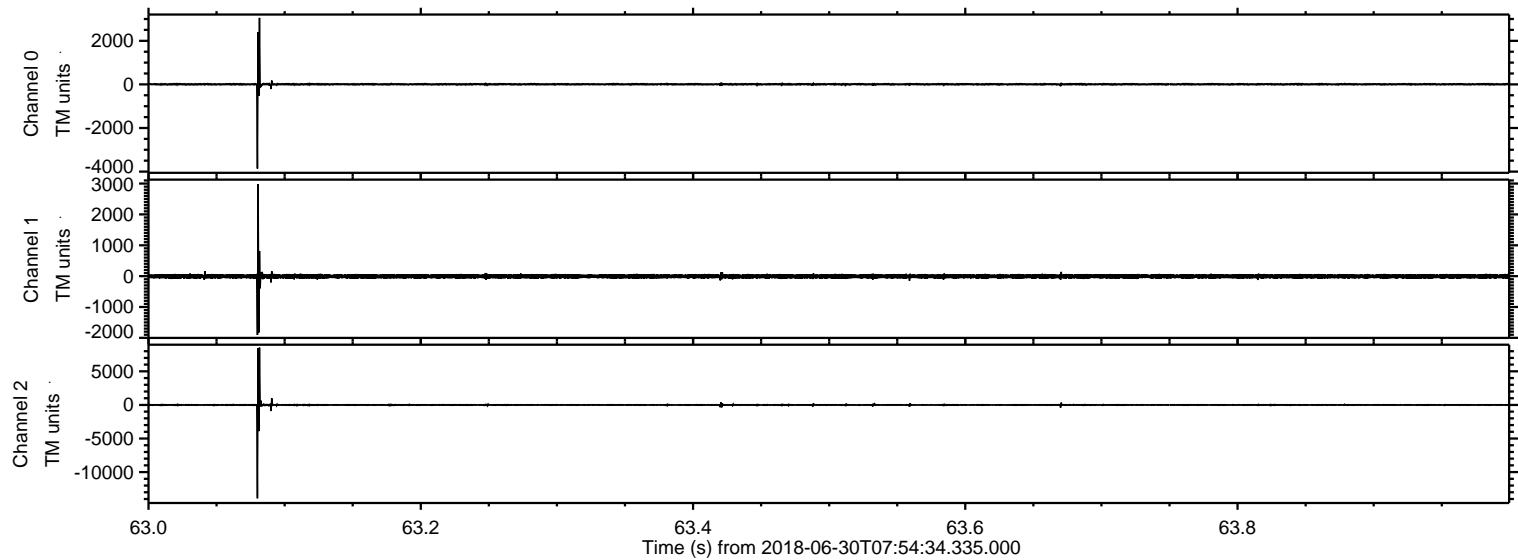
Processed Sat Jun 30 10:02:53 2018 by ELM ver.2012-10-06 from 001__elm20180630_075433__dat00.bin



Processed Sat Jun 30 10:03:02 2018 by ELM ver.2012-10-06 from 001__elm20180630_075433__dat00.bin

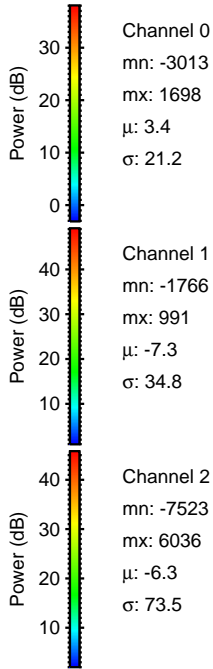
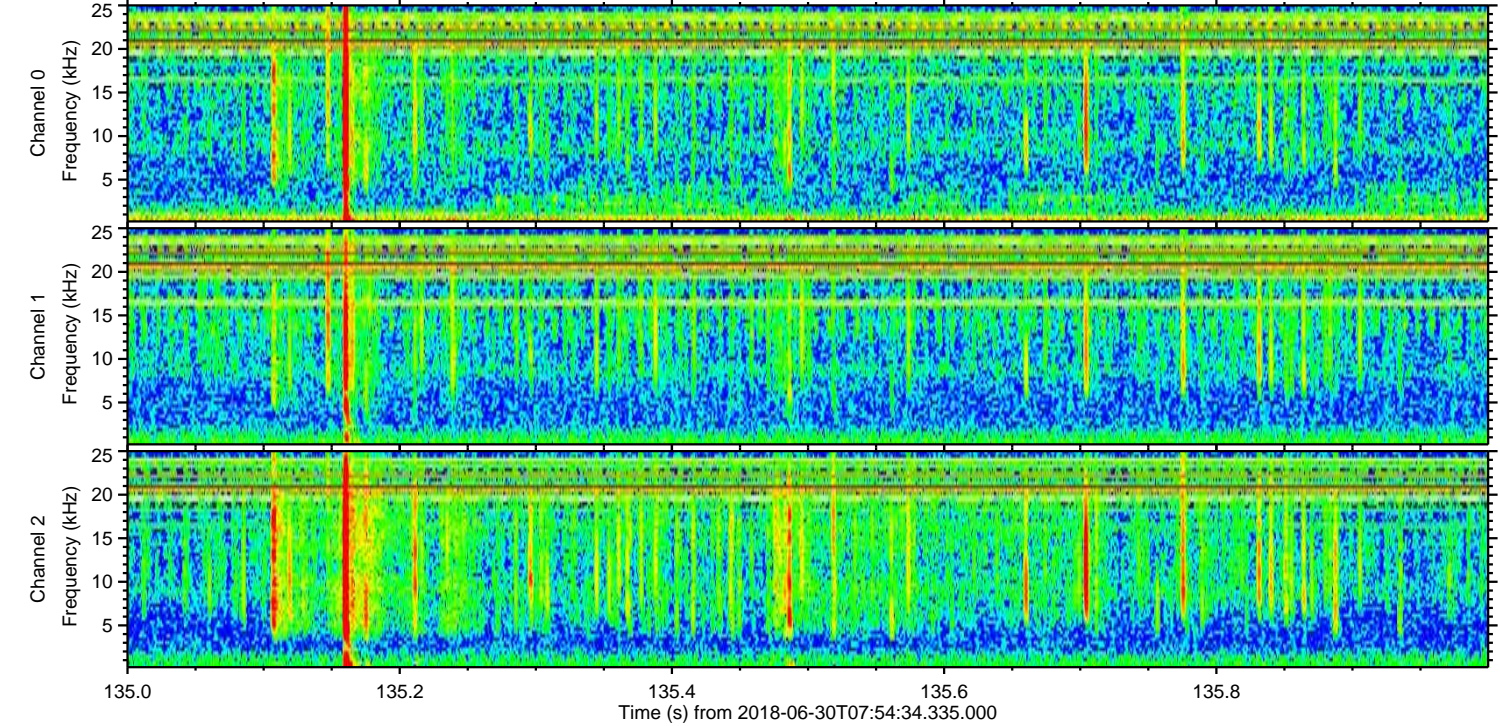
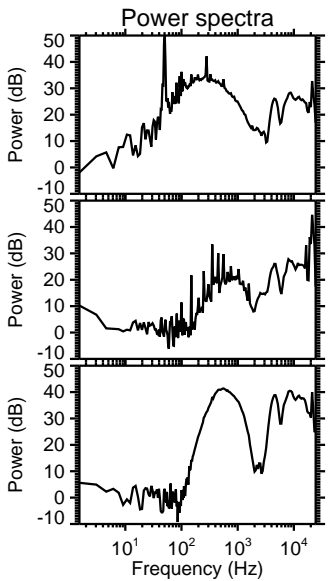
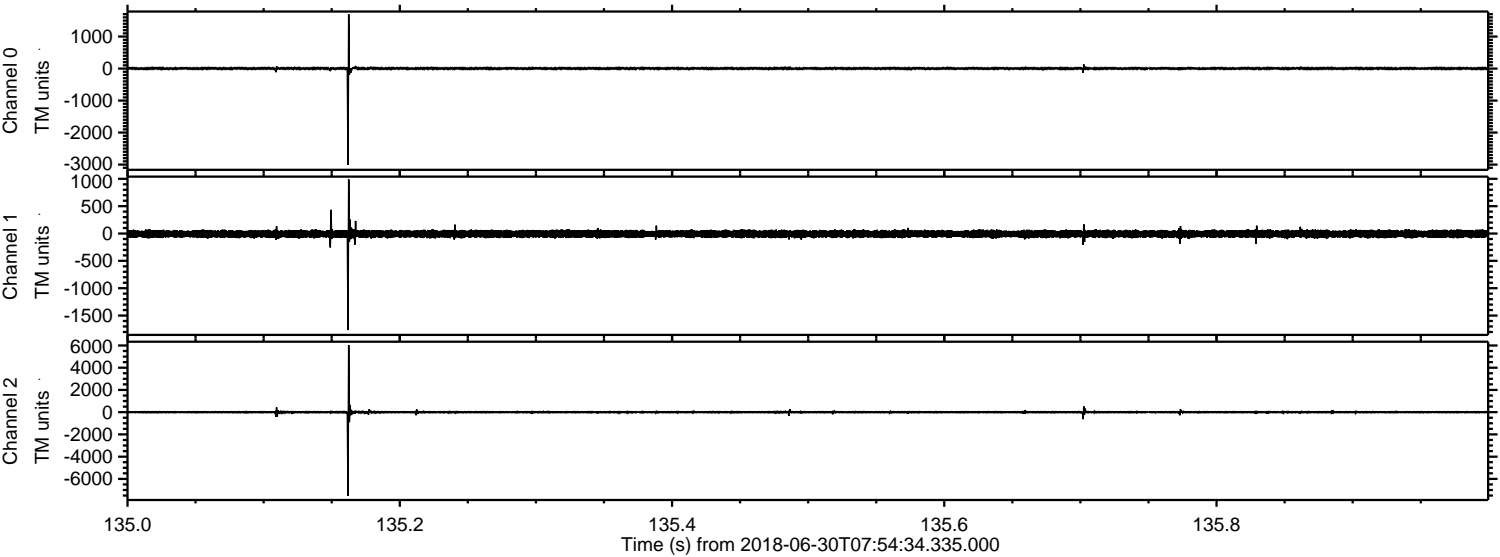


Processed Sat Jun 30 10:03:03 2018 by ELM ver.2012-10-06 from 001__elm20180630_075433__dat00.bin



ELMAVAN 3D WAVEFORMS (Measured data sampled at 50 kHz) 51000 packets of 144 samples from 2018-06-30T07:54:34.335.000. Part 136/147

Processed Sat Jun 30 10:03:04 2018 by ELM ver.2012-10-06 from 001__elm20180630_075433__dat00.bin



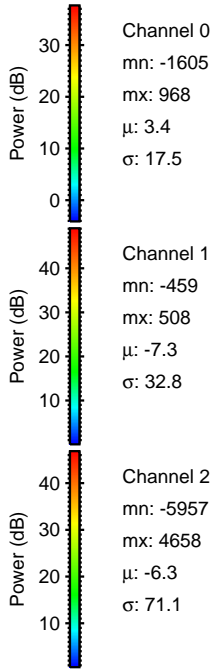
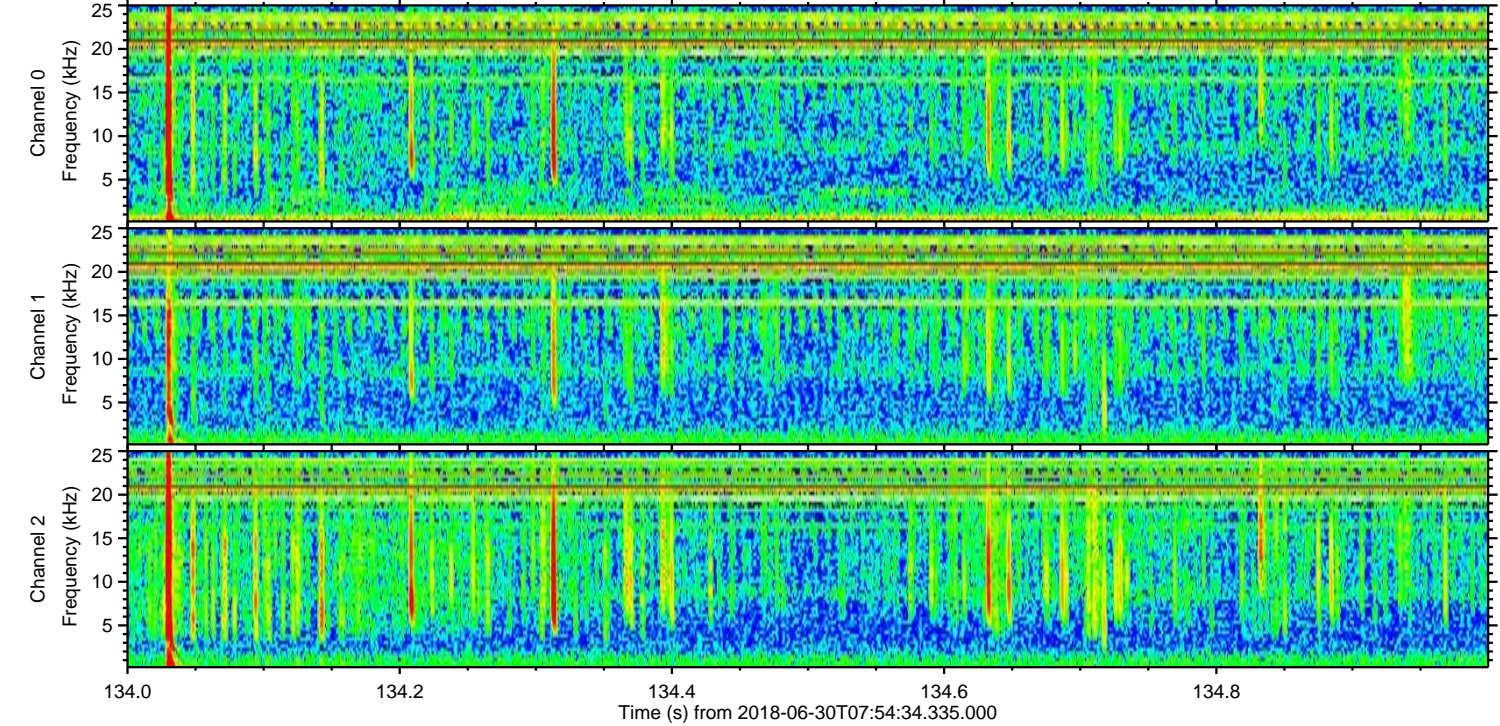
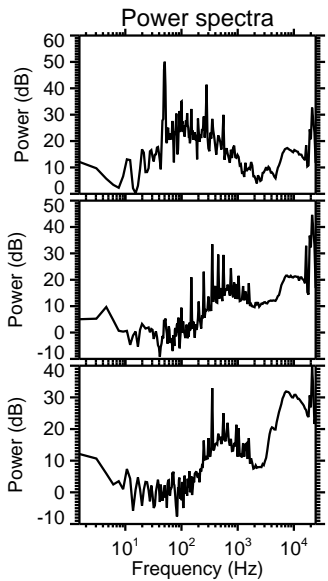
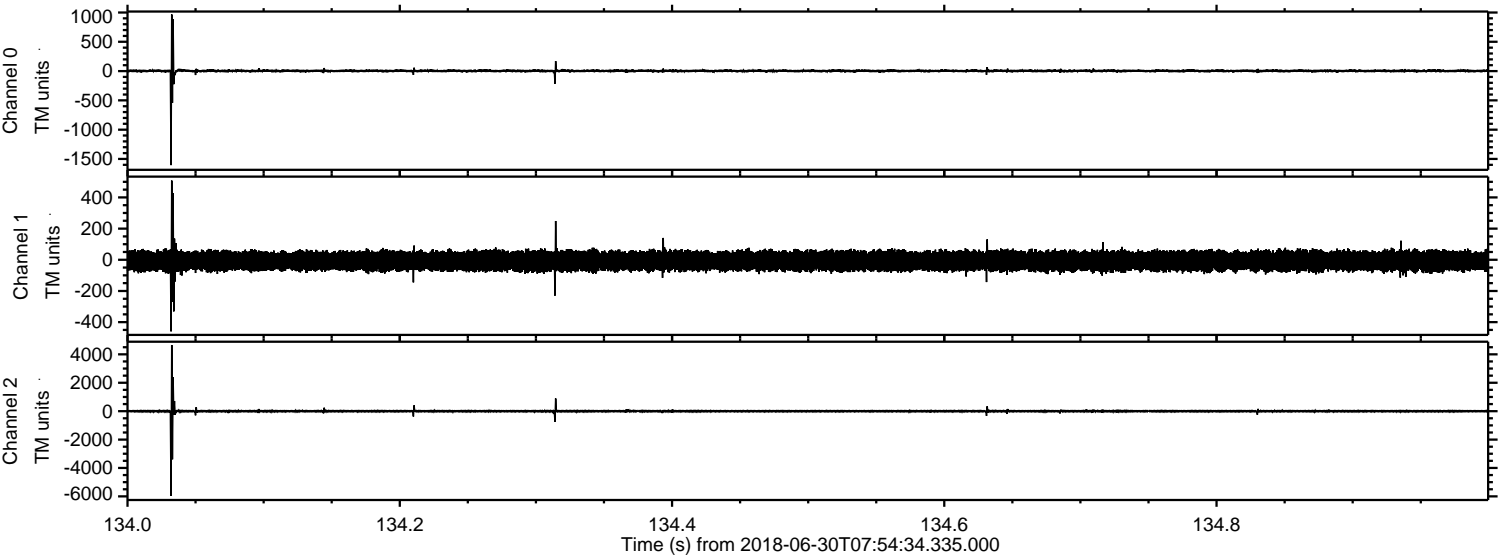
Channel 0
mn: -3013
mx: 1698
 μ : 3.4
 σ : 21.2

Channel 1
mn: -1766
mx: 991
 μ : -7.3
 σ : 34.8

Channel 2
mn: -7523
mx: 6036
 μ : -6.3
 σ : 73.5

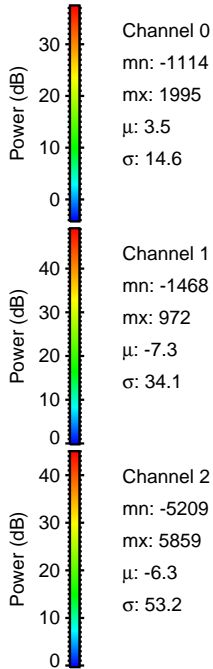
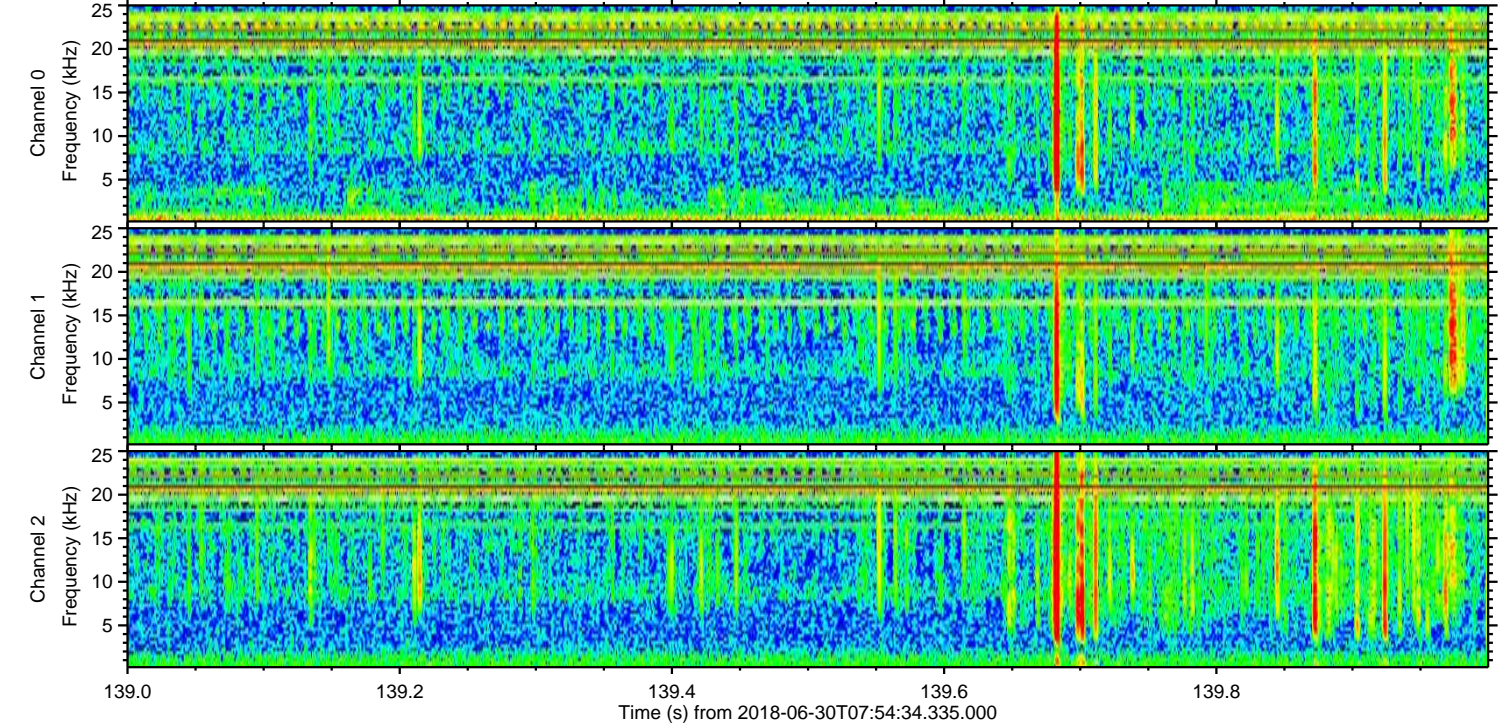
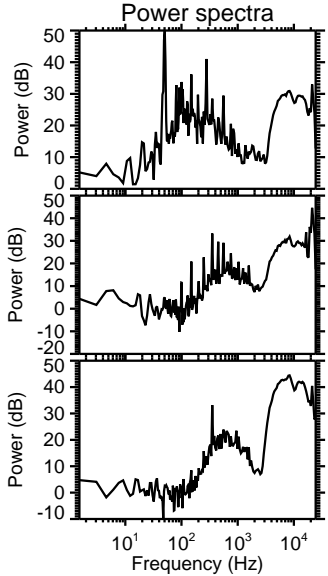
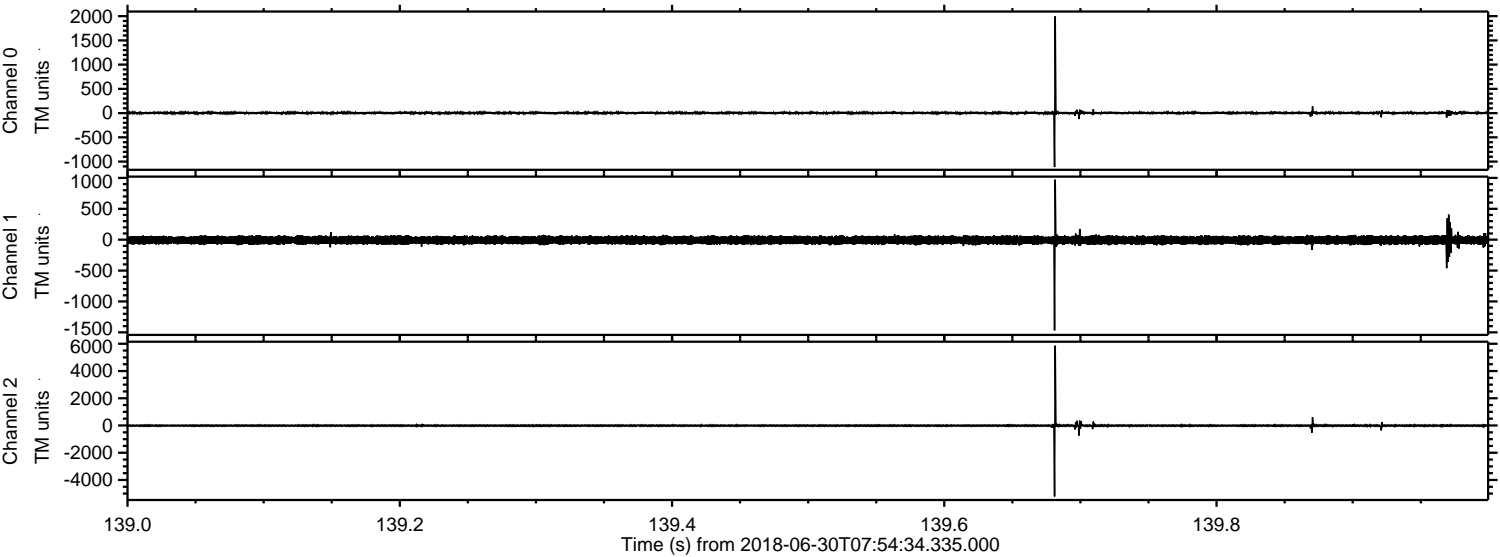
ELMAVAN 3D WAVEFORMS (Measured data sampled at 50 kHz) 51000 packets of 144 samples from 2018-06-30T07:54:34.335.000. Part 135/147

Processed Sat Jun 30 10:03:05 2018 by ELM ver.2012-10-06 from 001__elm20180630_075433__dat00.bin

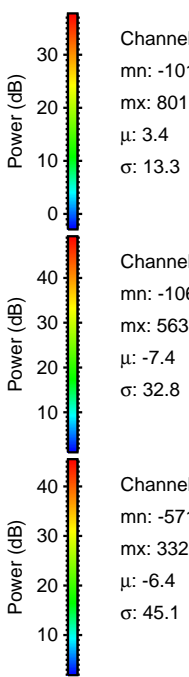
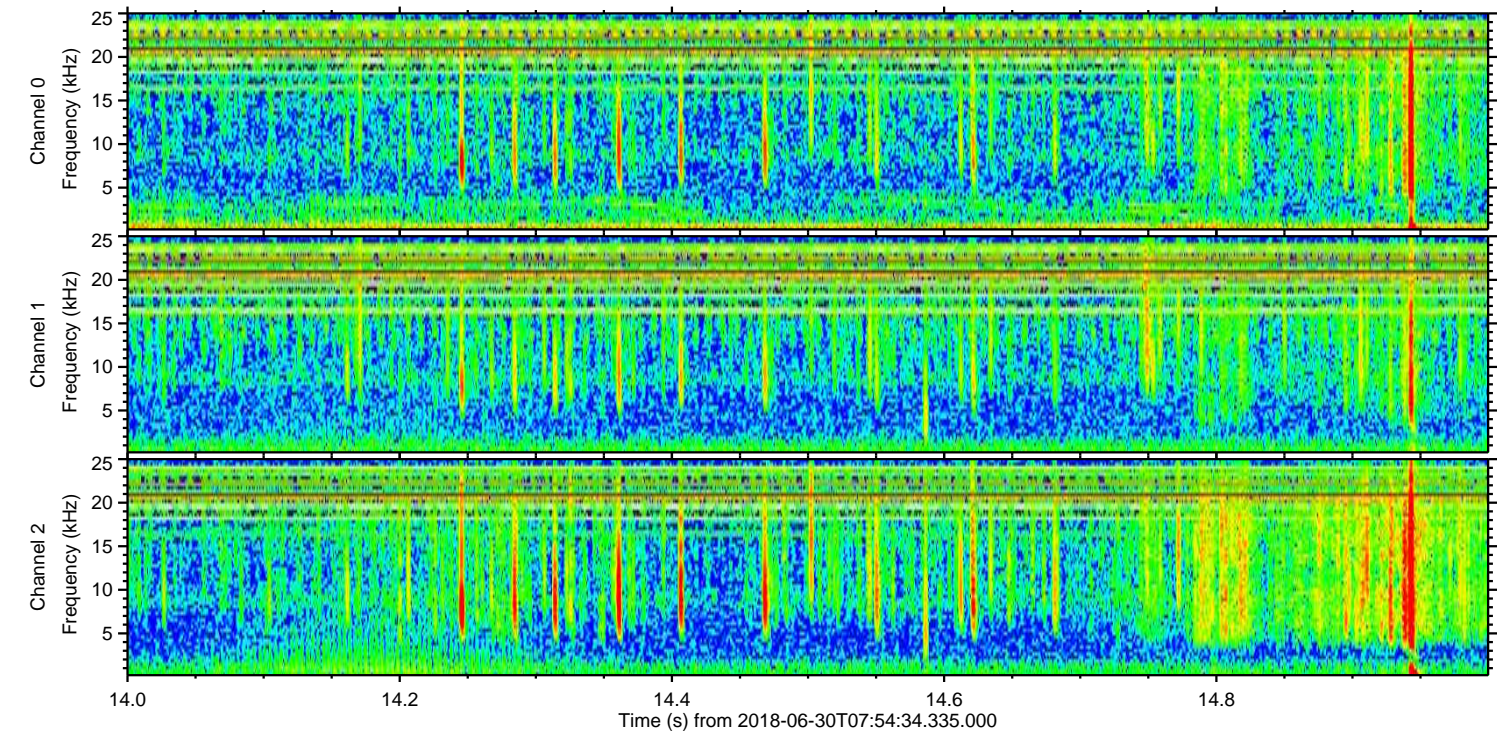
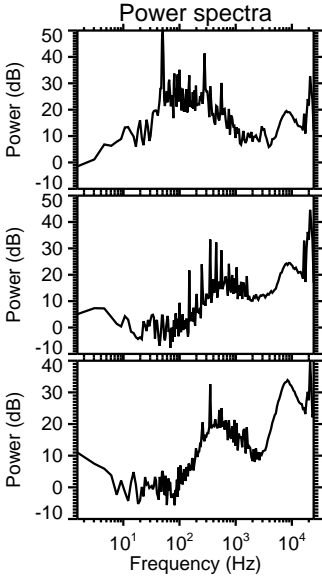
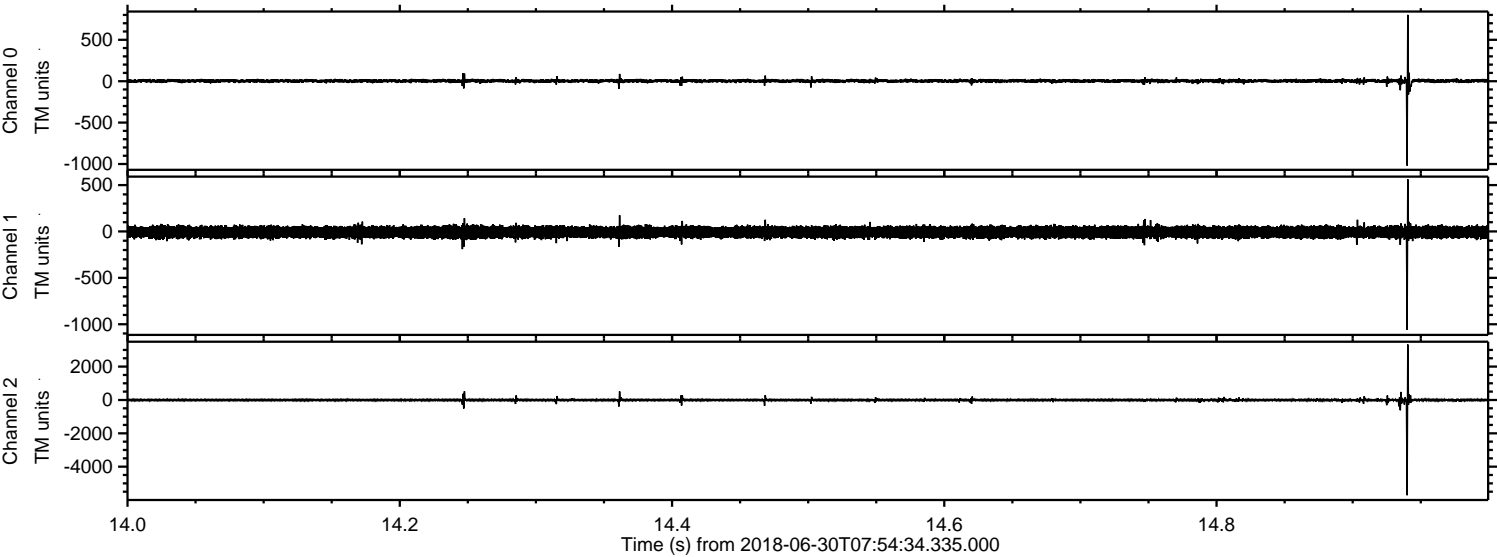


ELMAVAN 3D WAVEFORMS (Measured data sampled at 50 kHz) 51000 packets of 144 samples from 2018-06-30T07:54:34.335.000. Part 140/147

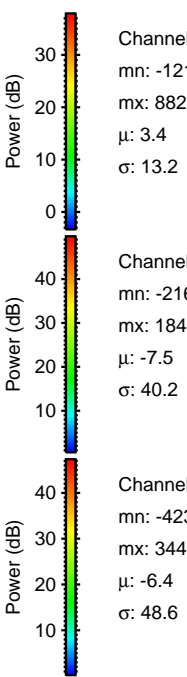
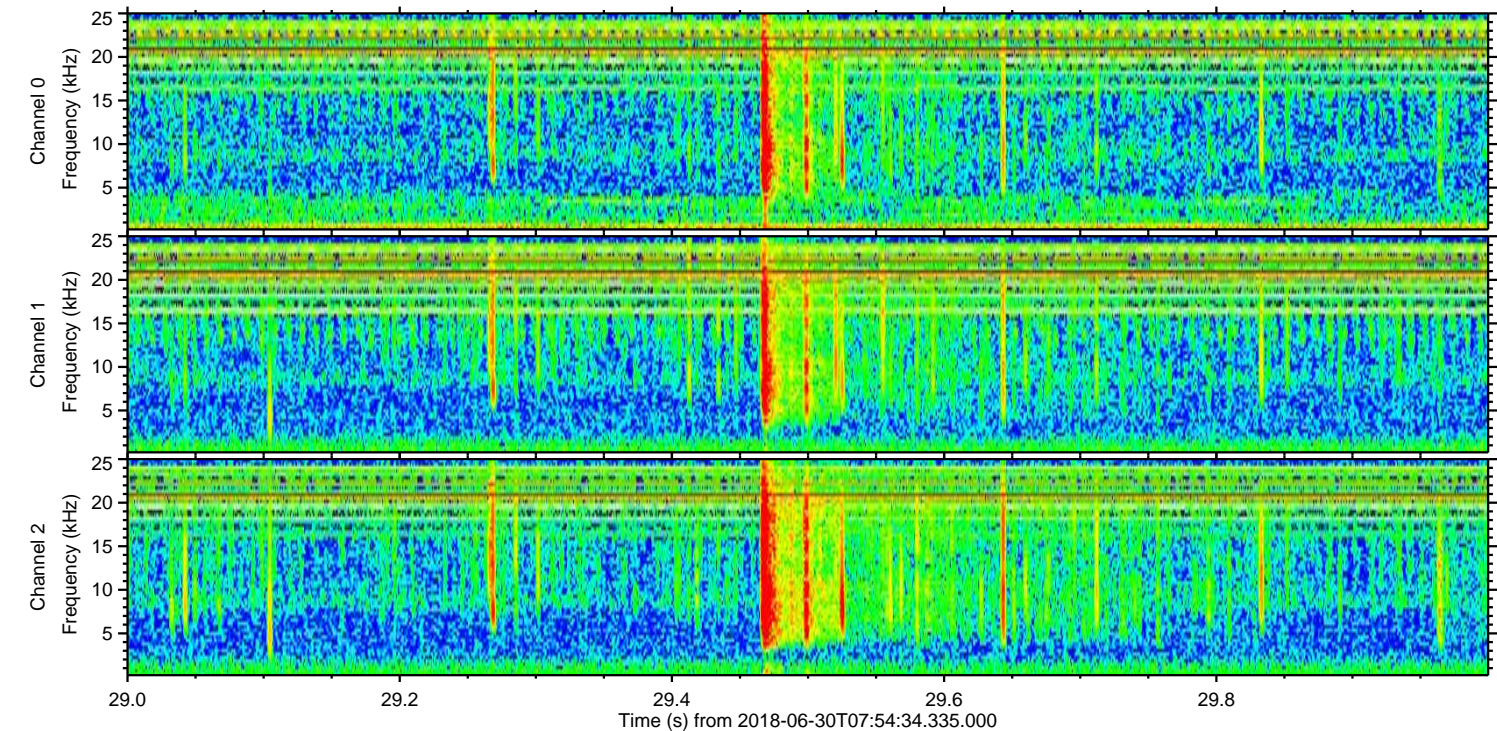
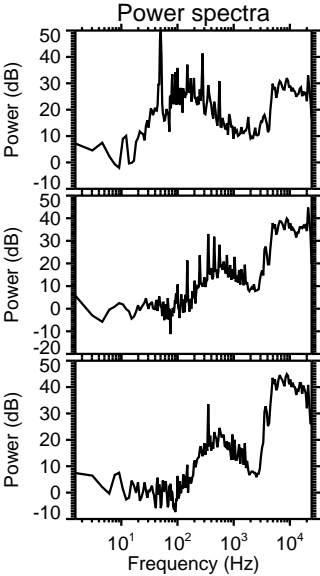
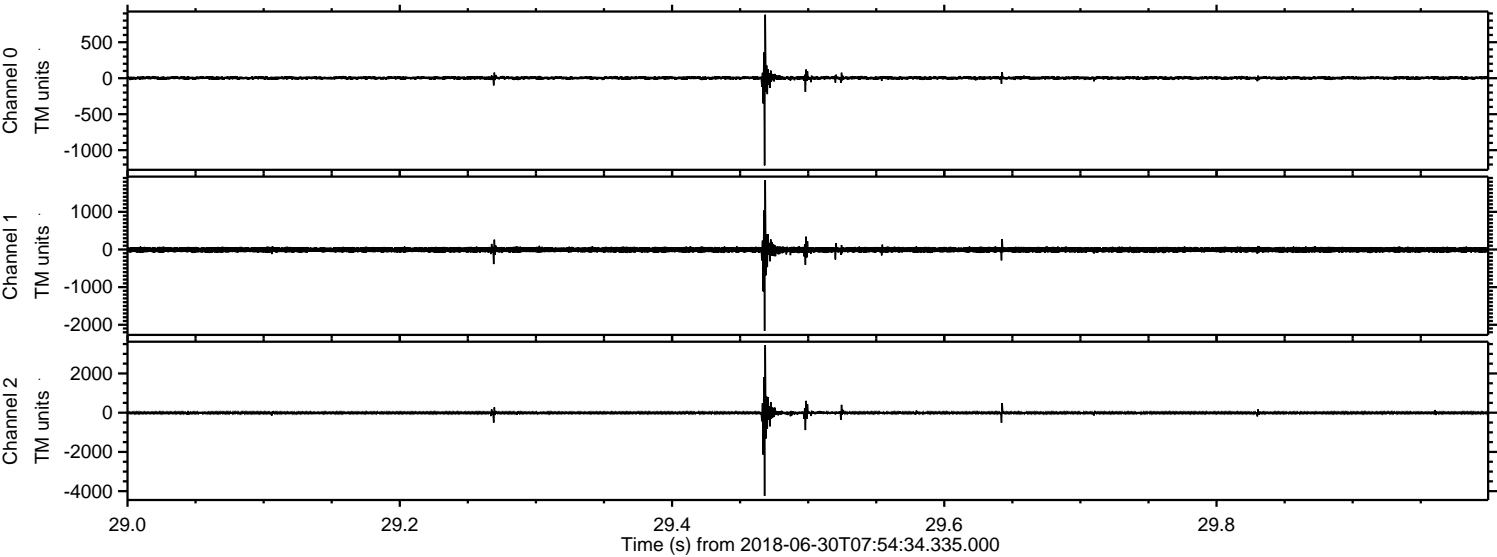
Processed Sat Jun 30 10:03:05 2018 by ELM ver.2012-10-06 from 001__elm20180630_075433__dat00.bin



Processed Sat Jun 30 10:03:06 2018 by ELM ver.2012-10-06 from 001__elm20180630_075433__dat00.bin



Processed Sat Jun 30 10:03:07 2018 by ELM ver.2012-10-06 from 001__elm20180630_075433__dat00.bin

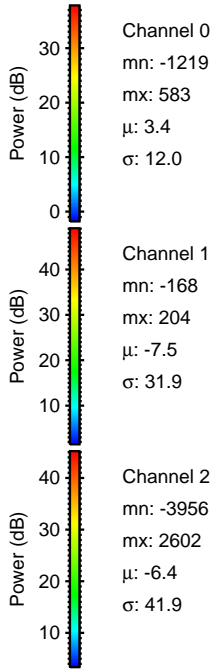
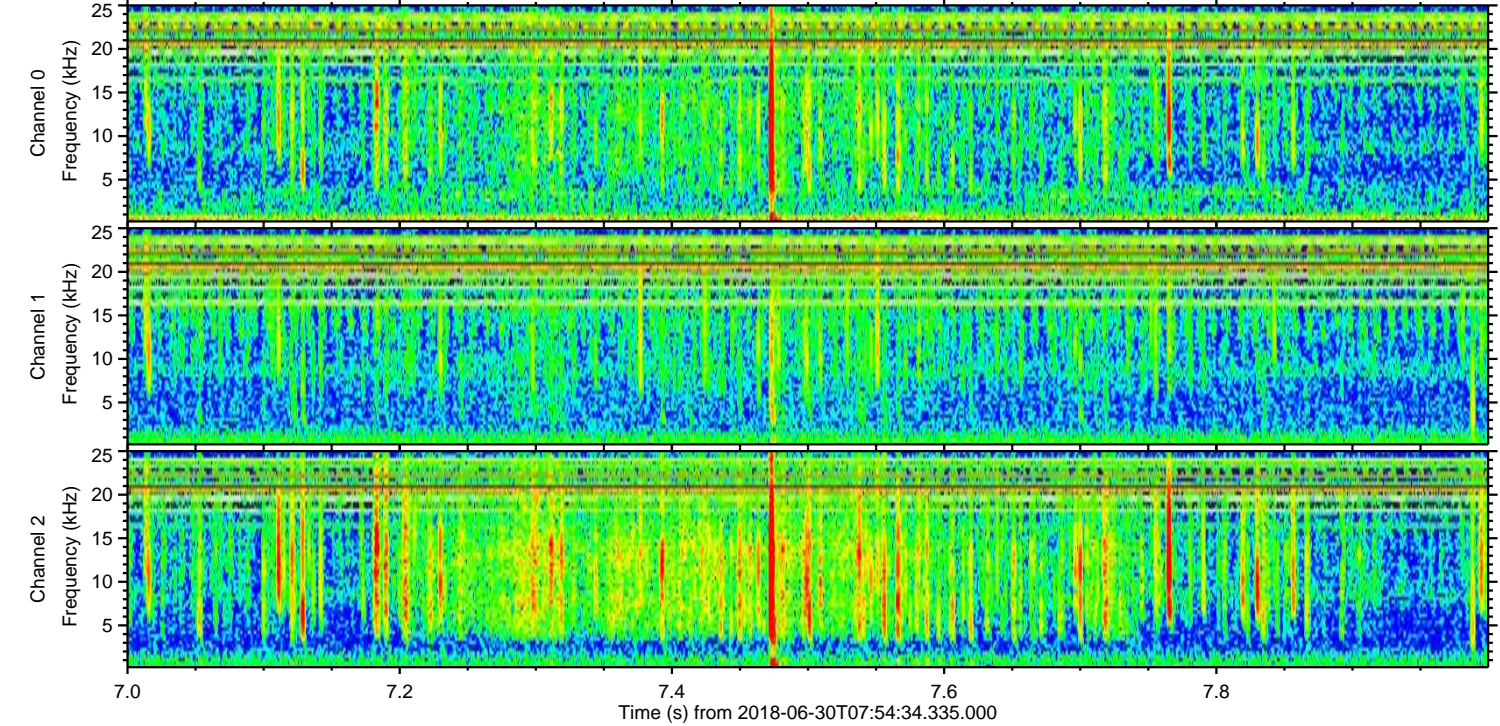
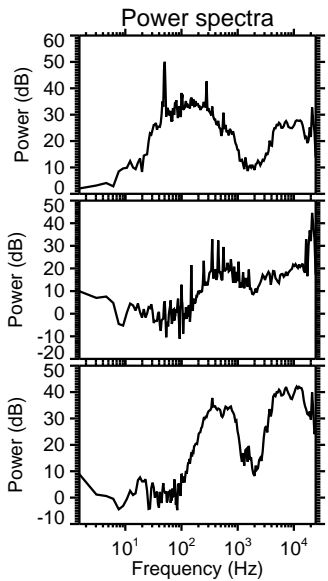
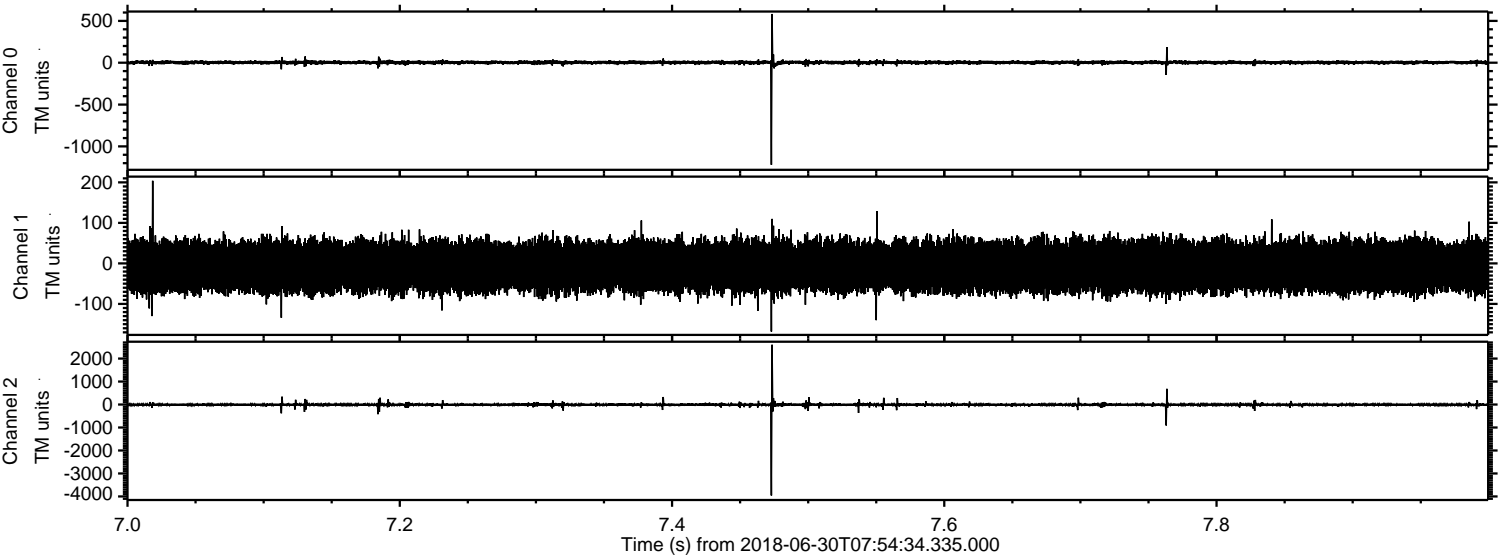


Channel 0
mn: -1213
mx: 882
 μ : 3.4
 σ : 13.2

Channel 1
mn: -2162
mx: 1844
 μ : -7.5
 σ : 40.2

Channel 2
mn: -4238
mx: 3447
 μ : -6.4
 σ : 48.6

Processed Sat Jun 30 10:03:08 2018 by ELM ver.2012-10-06 from 001__elm20180630_075433__dat00.bin



Processed Sat Jun 30 10:03:08 2018 by ELM ver.2012-10-06 from 001__elm20180630_075433__dat00.bin

