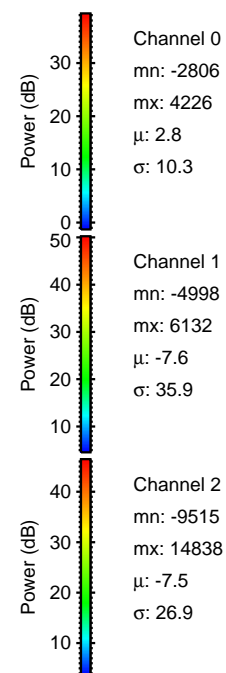
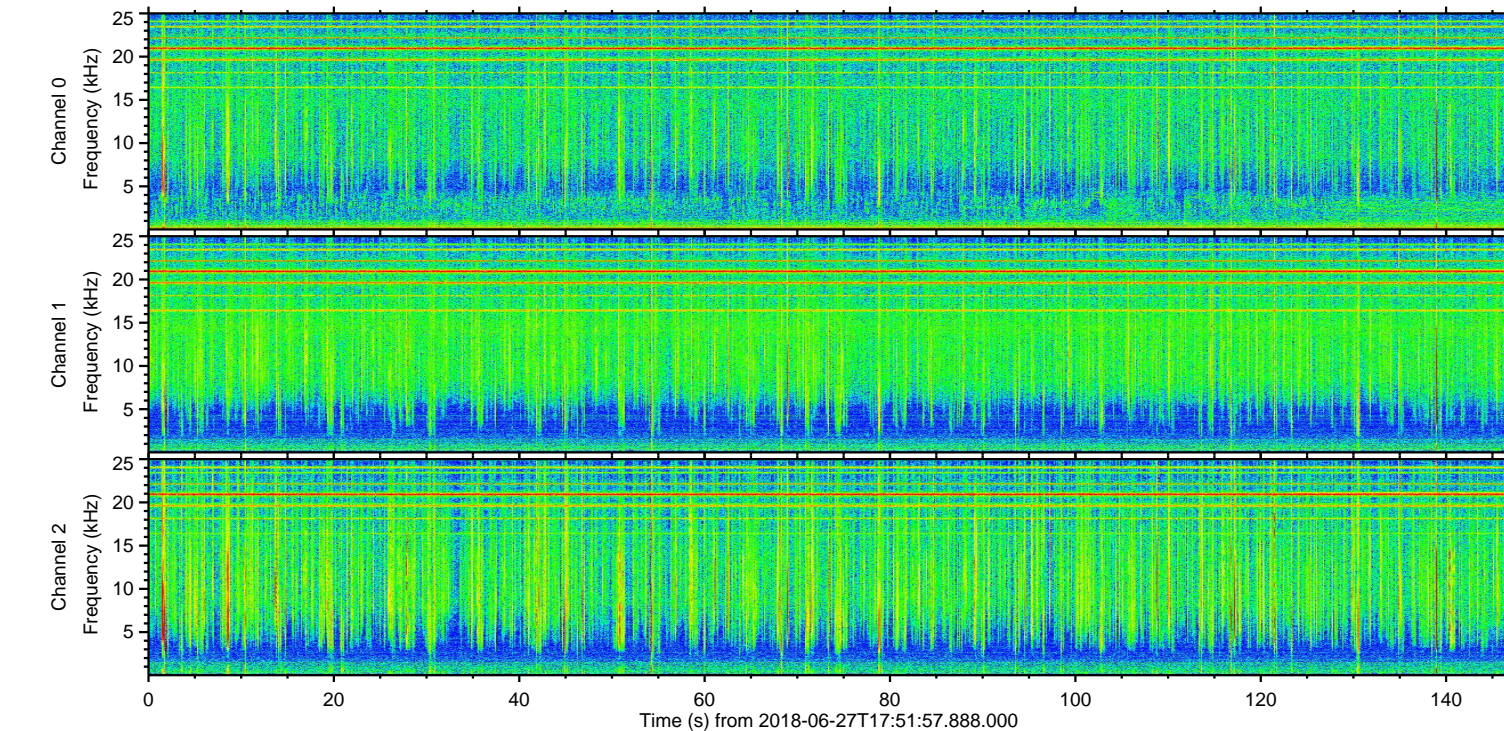
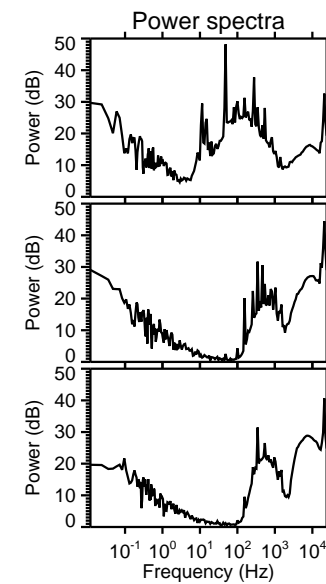
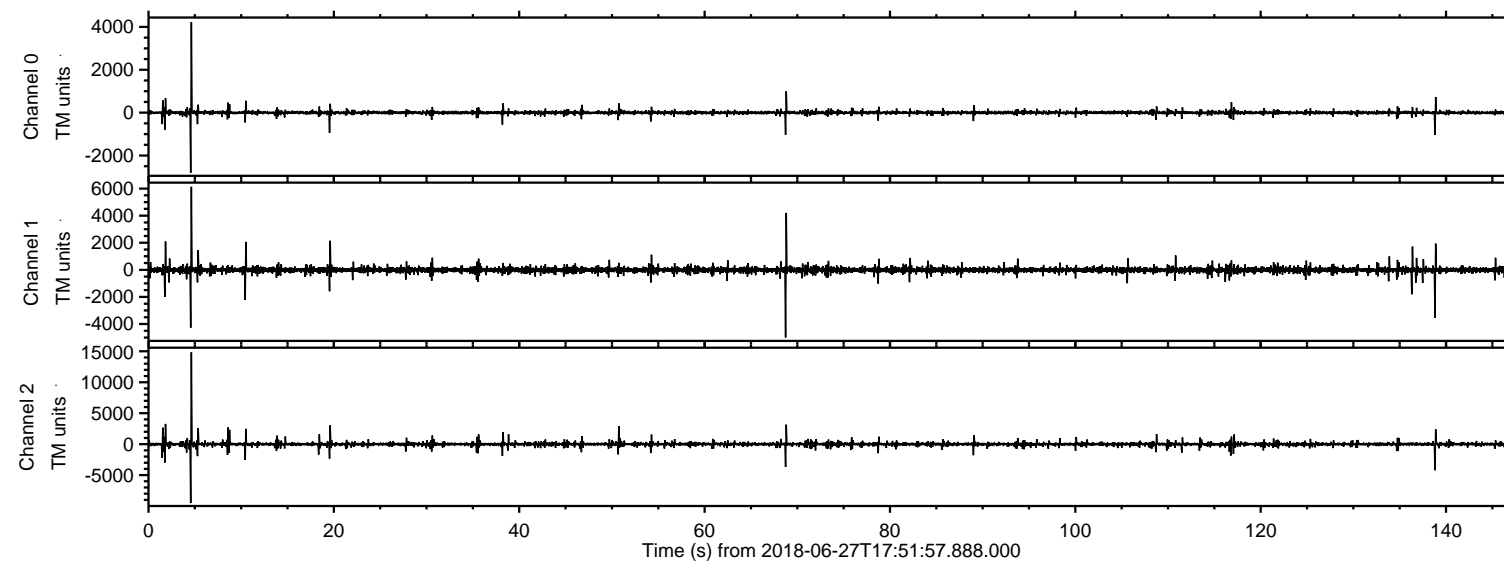


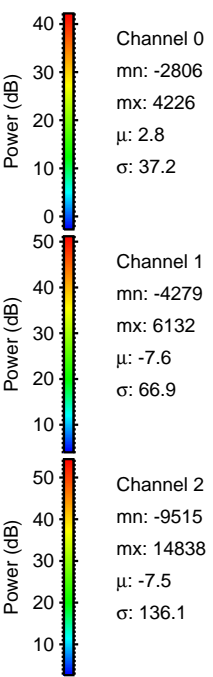
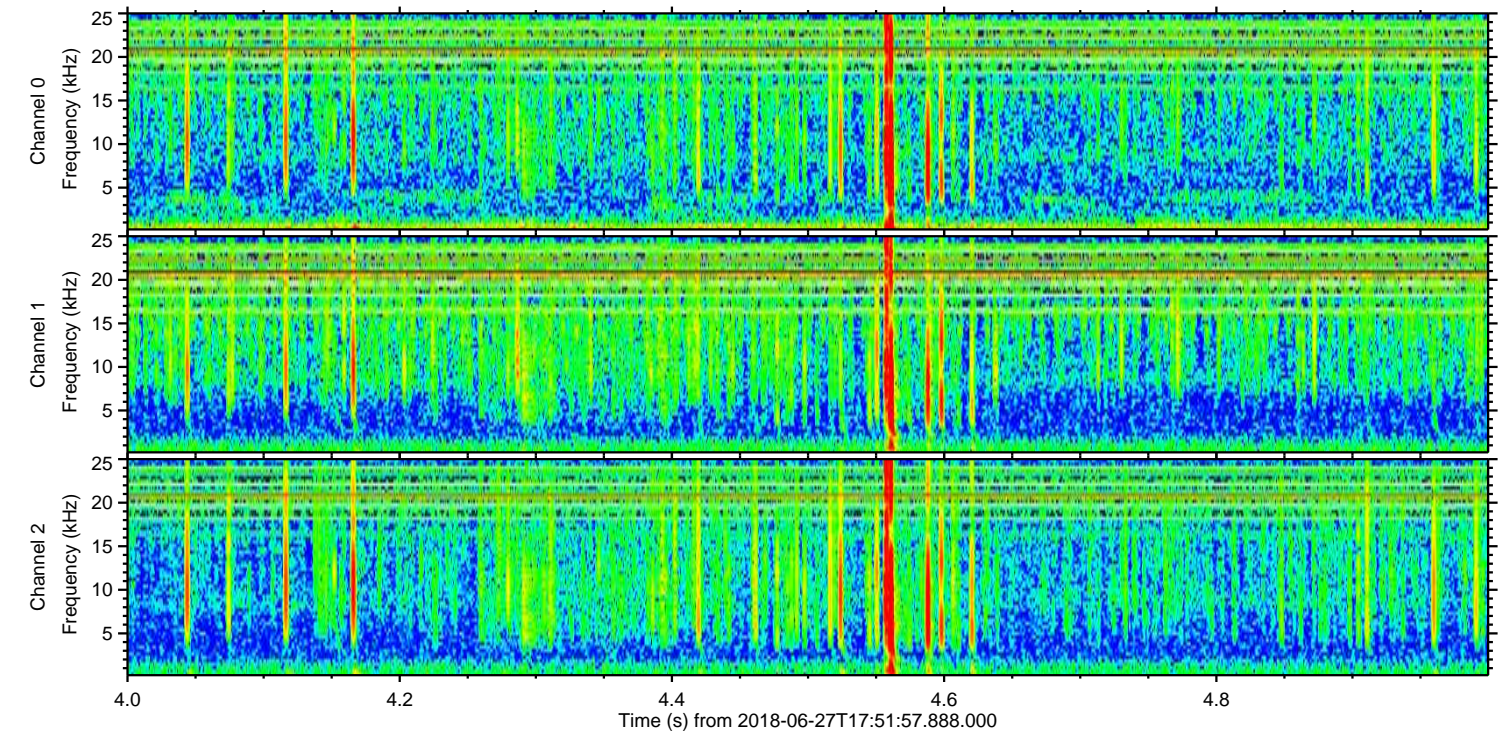
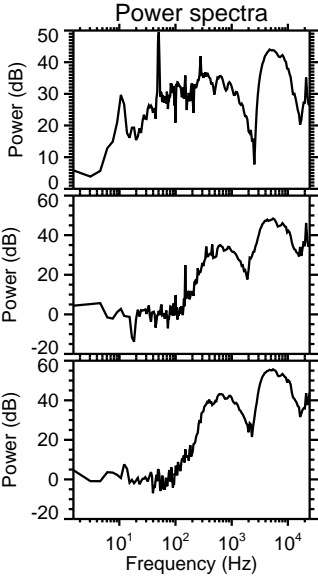
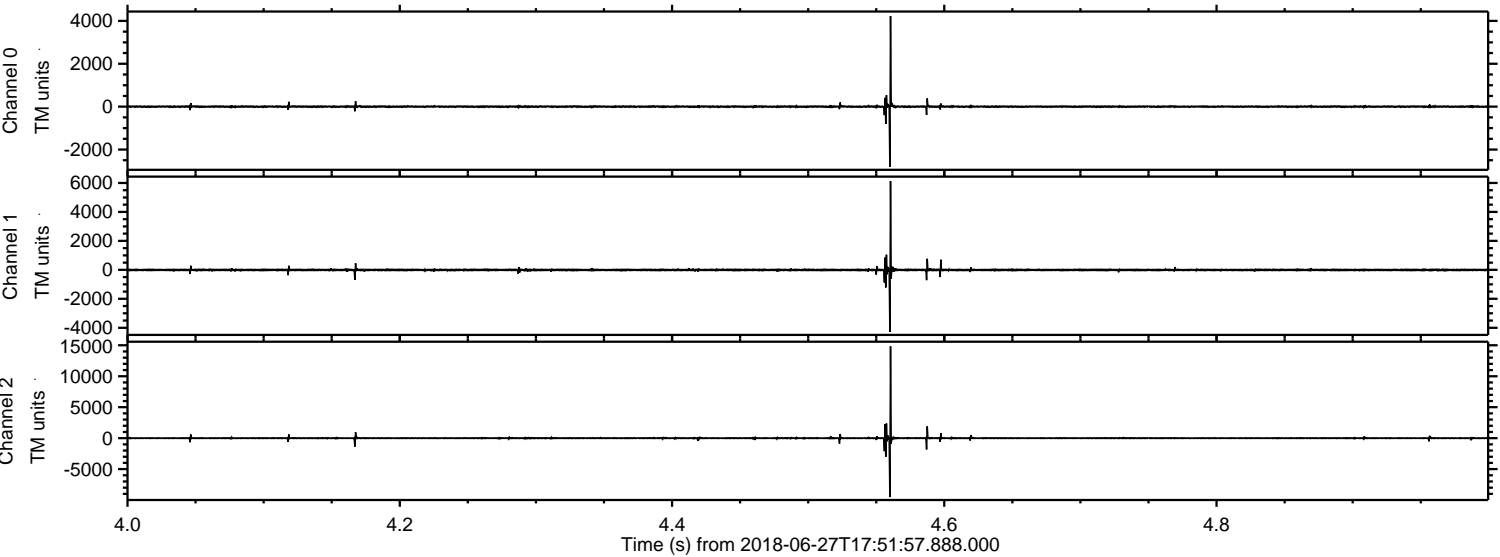
ELMAVAN 3D WAVEFORMS (Measured data sampled at 50 kHz) 51000 packets of 144 samples from 2018-06-27T17:51:57.888.000.

Processed Wed Jun 27 19:59:30 2018 by ELM ver.2012-10-06 from 001__elm20180627_175156__dat00.bin

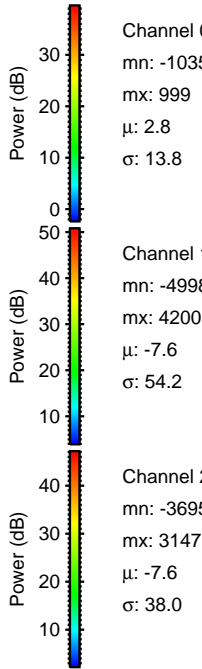
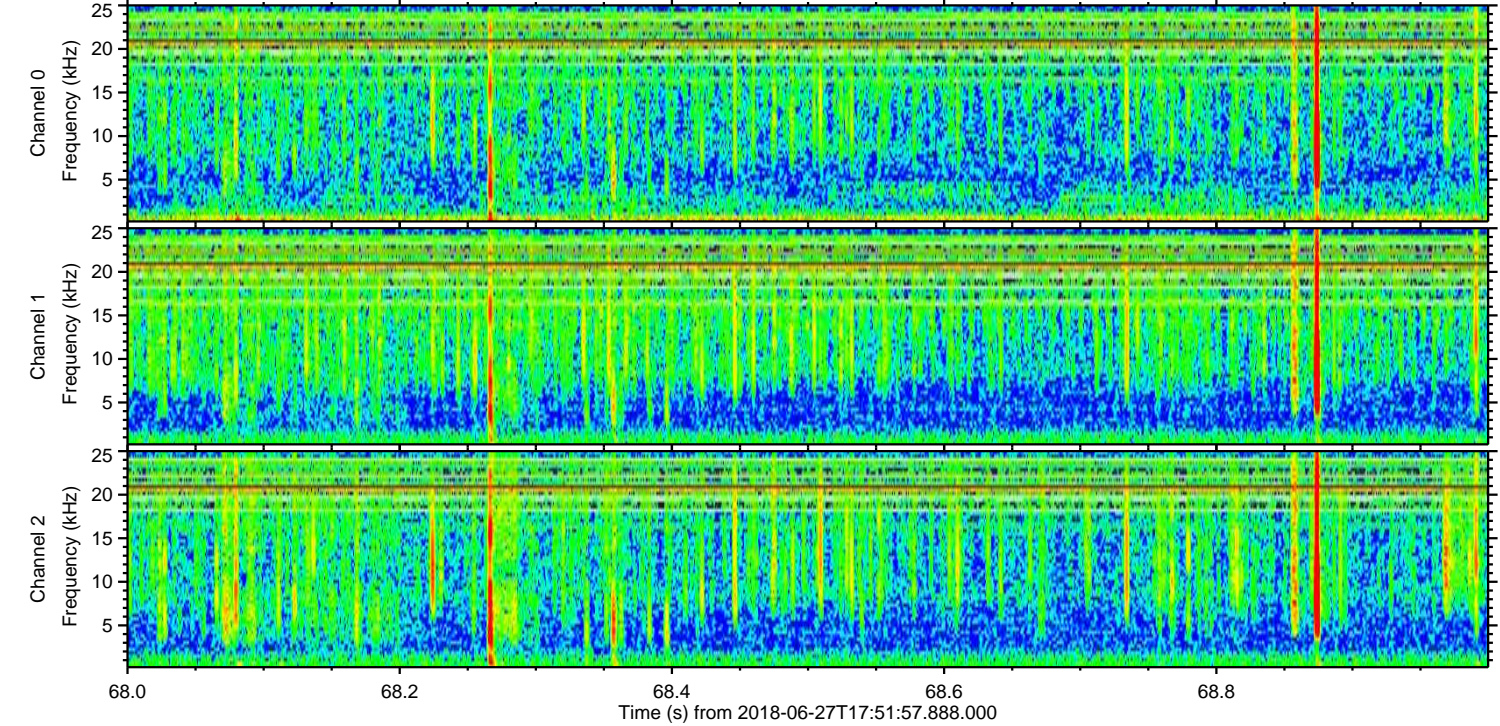
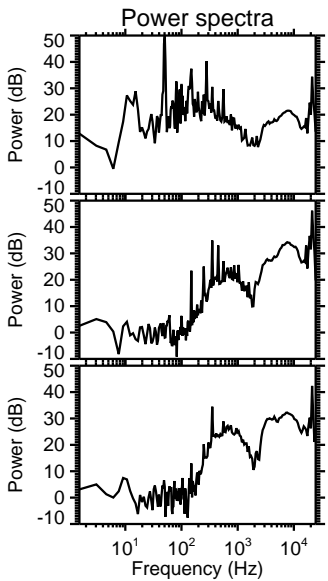
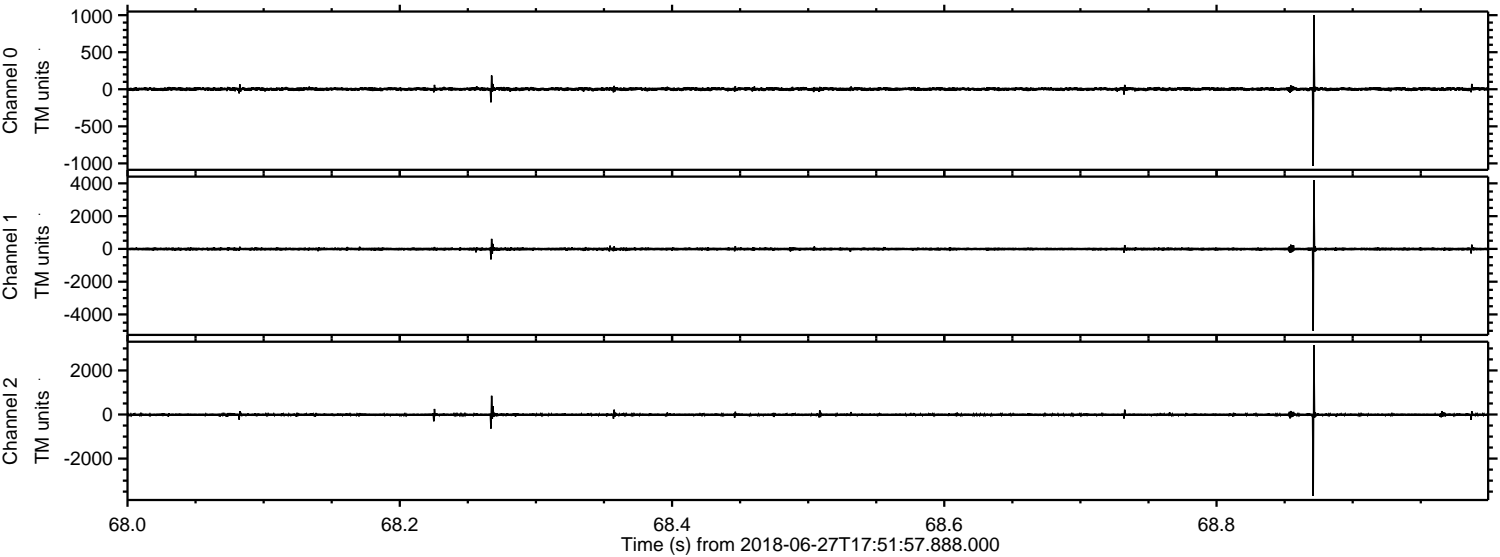


ELMAVAN 3D WAVEFORMS (Measured data sampled at 50 kHz) 51000 packets of 144 samples from 2018-06-27T17:51:57.888.000. Part 5/147

Processed Wed Jun 27 19:59:38 2018 by ELM ver.2012-10-06 from 001__elm20180627_175156__dat00.bin



Processed Wed Jun 27 19:59:39 2018 by ELM ver.2012-10-06 from 001__elm20180627_175156__dat00.bin



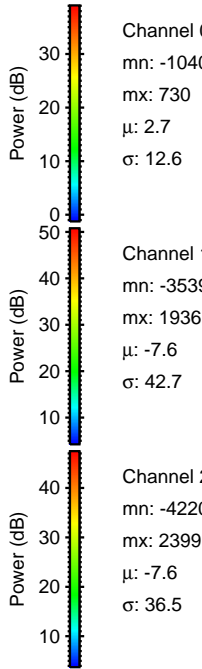
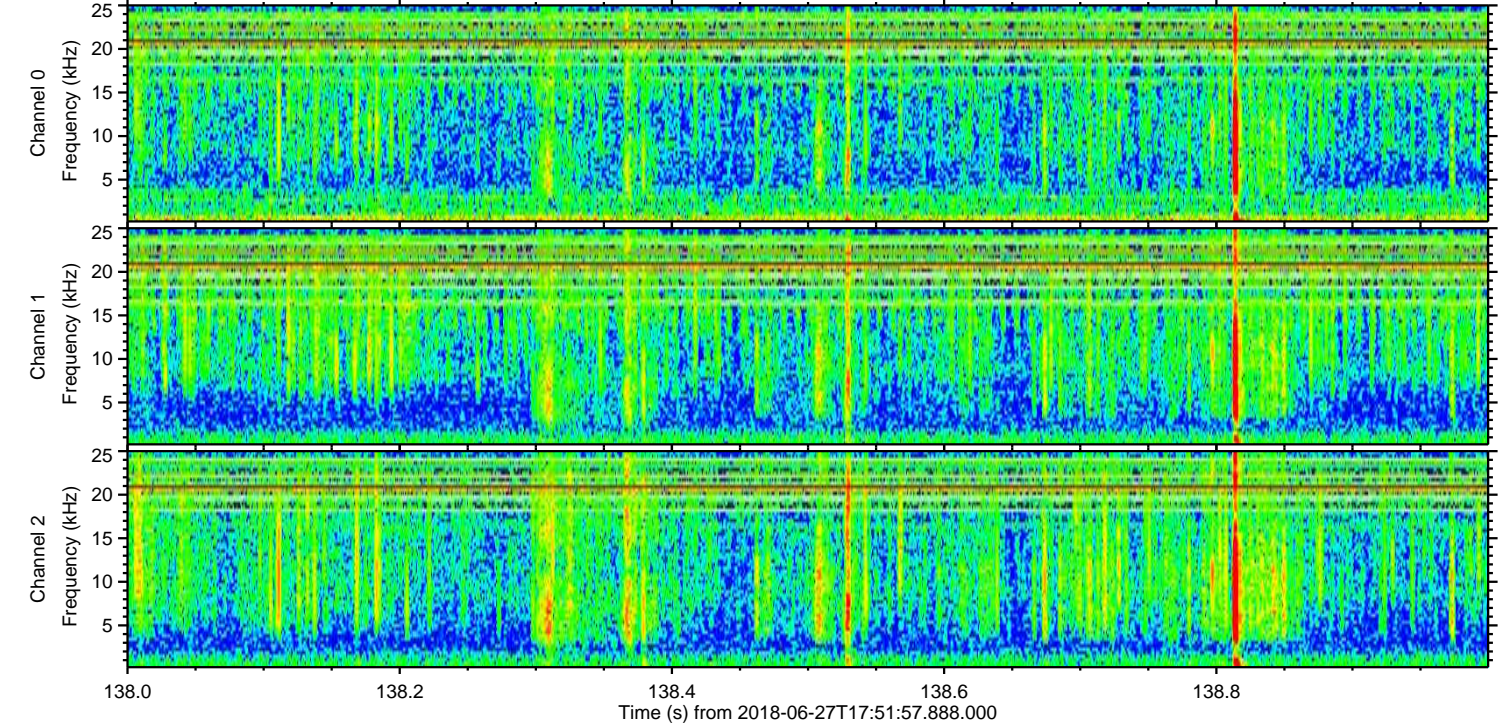
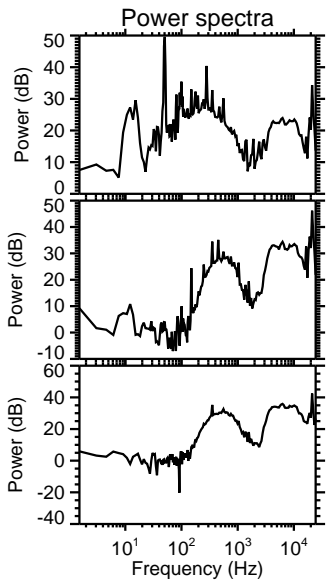
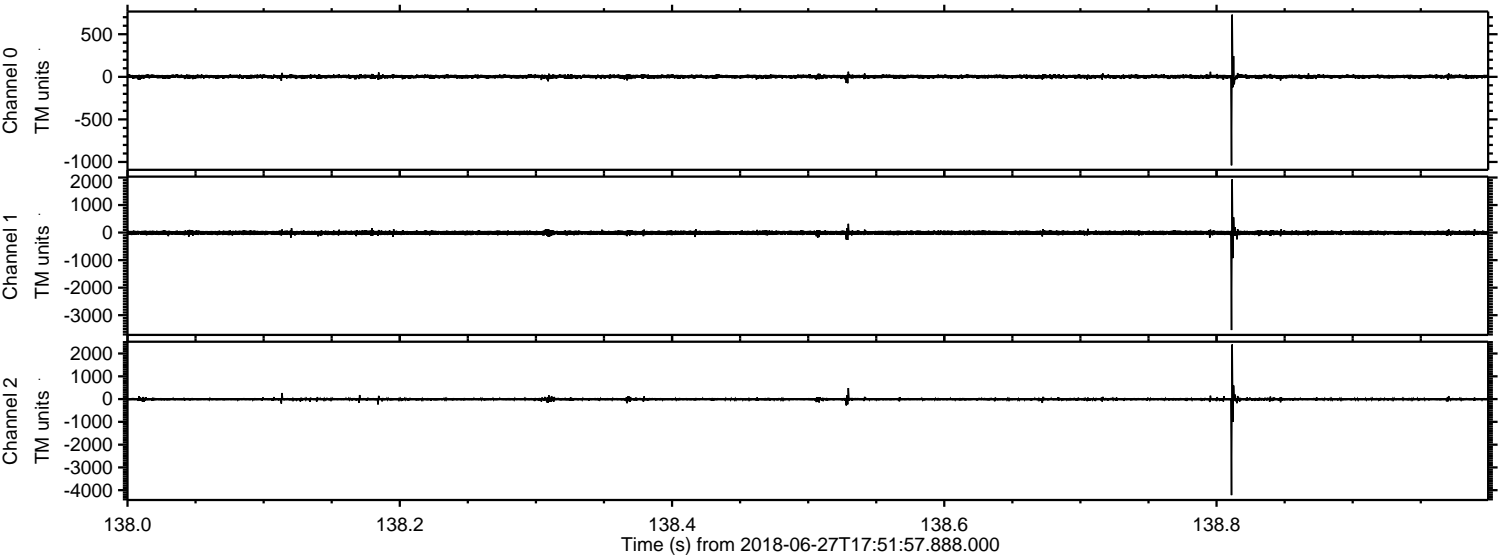
Channel 0
mn: -1035
mx: 999
 μ : 2.8
 σ : 13.8

Channel 1
mn: -4998
mx: 4200
 μ : -7.6
 σ : 54.2

Channel 2
mn: -3695
mx: 3147
 μ : -7.6
 σ : 38.0

ELMAVAN 3D WAVEFORMS (Measured data sampled at 50 kHz) 51000 packets of 144 samples from 2018-06-27T17:51:57.888.000. Part 139/147

Processed Wed Jun 27 19:59:40 2018 by ELM ver.2012-10-06 from 001__elm20180627_175156__dat00.bin

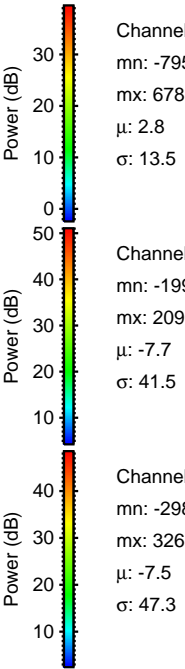
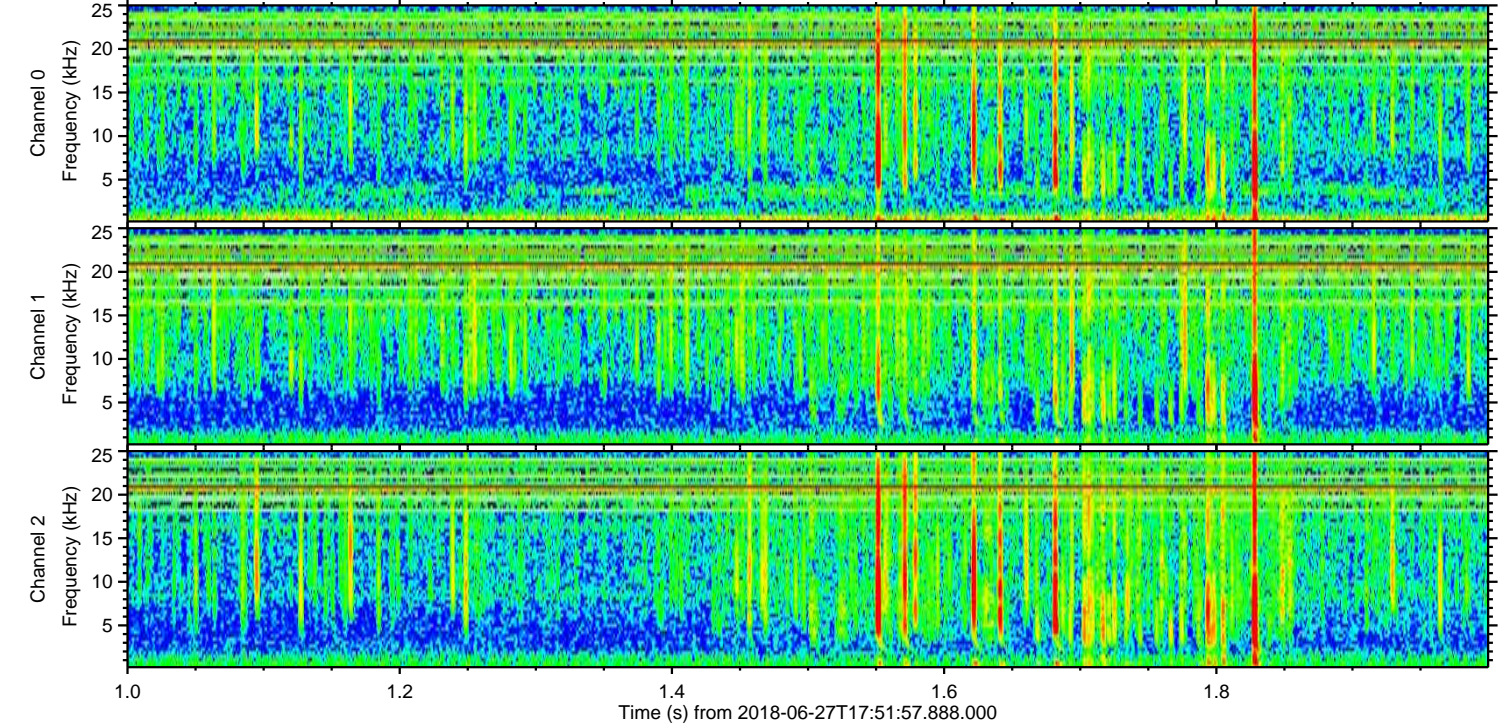
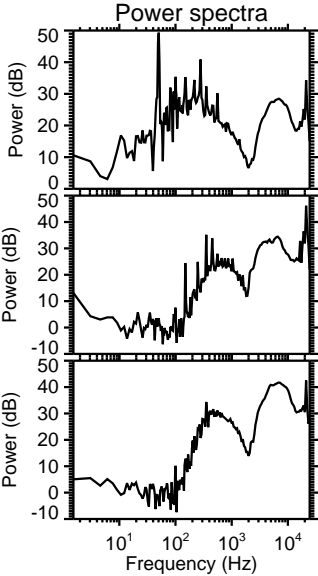
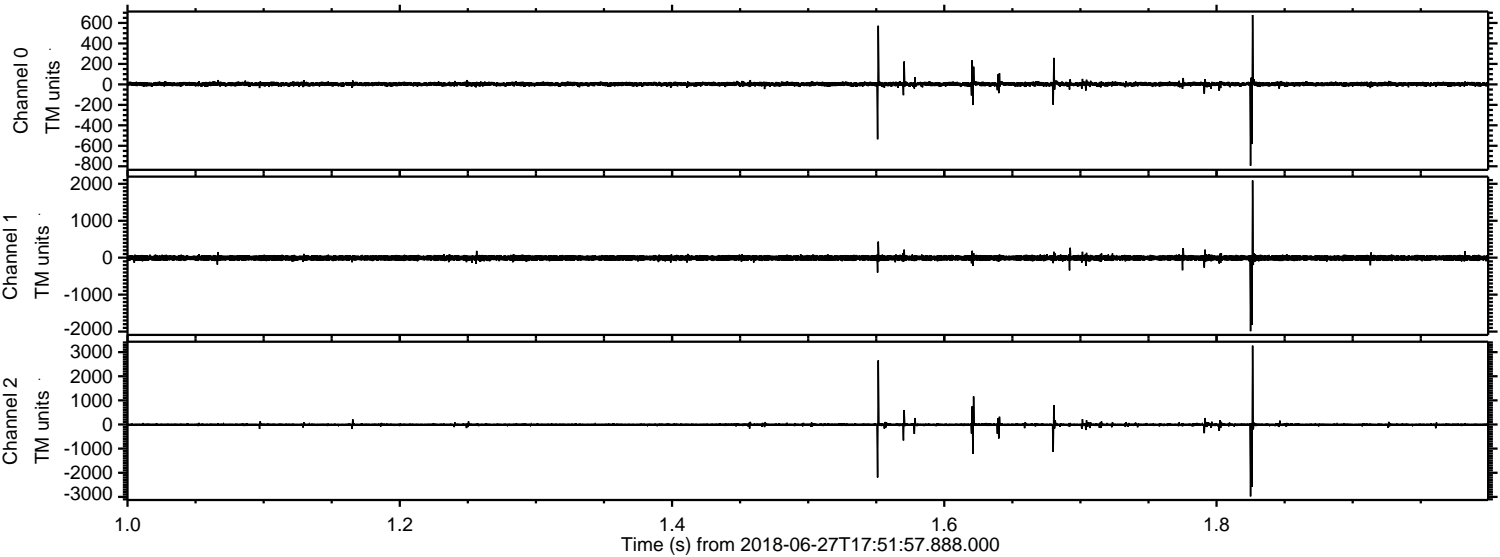


Channel 0
mn: -1040
mx: 730
 μ : 2.7
 σ : 12.6

Channel 1
mn: -3539
mx: 1936
 μ : -7.6
 σ : 42.7

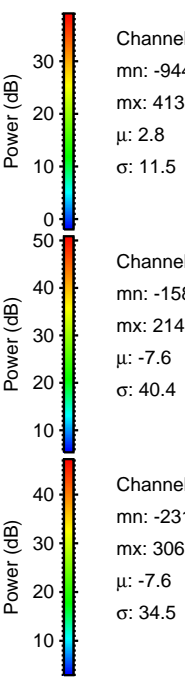
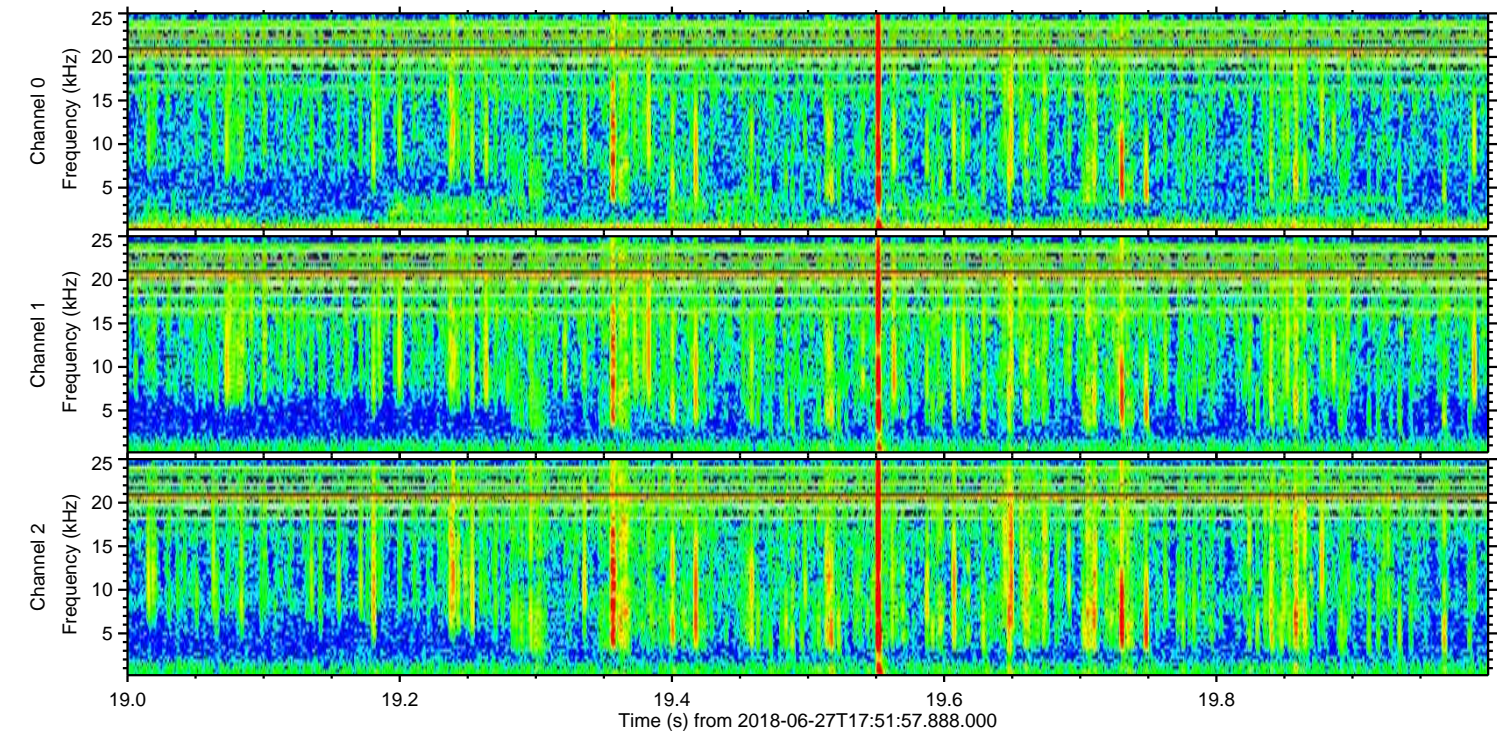
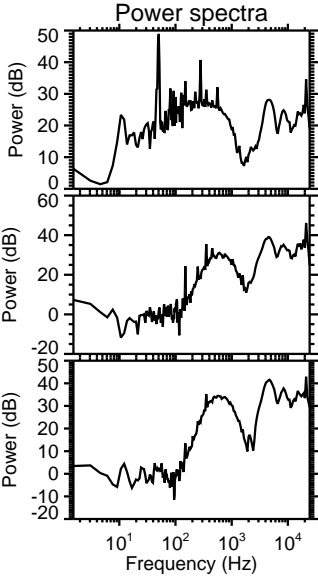
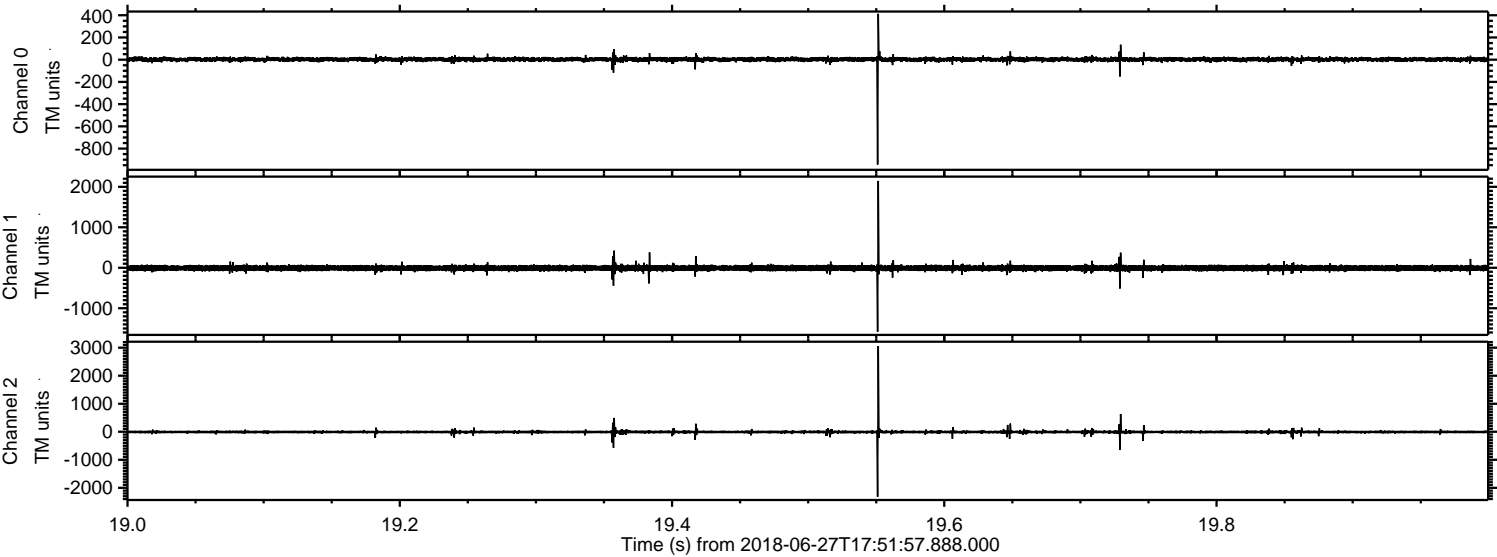
Channel 2
mn: -4220
mx: 2399
 μ : -7.6
 σ : 36.5

Processed Wed Jun 27 19:59:41 2018 by ELM ver.2012-10-06 from 001__elm20180627_175156__dat00.bin



ELMAVAN 3D WAVEFORMS (Measured data sampled at 50 kHz) 51000 packets of 144 samples from 2018-06-27T17:51:57.888.000. Part 20/147

Processed Wed Jun 27 19:59:41 2018 by ELM ver.2012-10-06 from 001__elm20180627_175156__dat00.bin

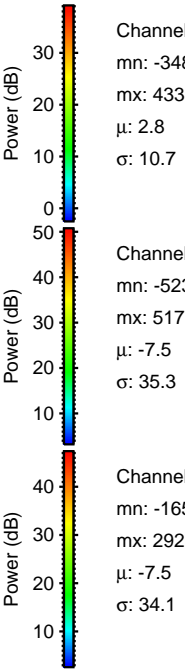
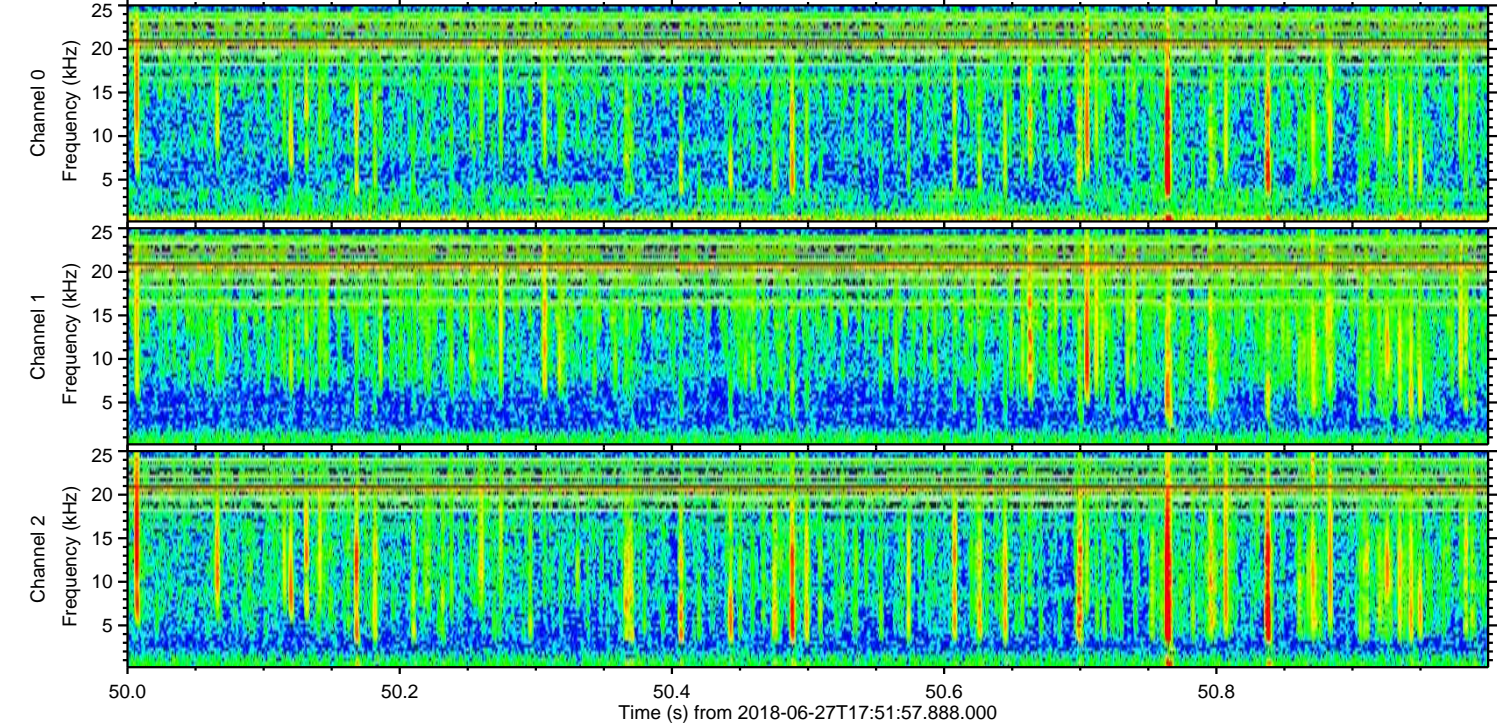
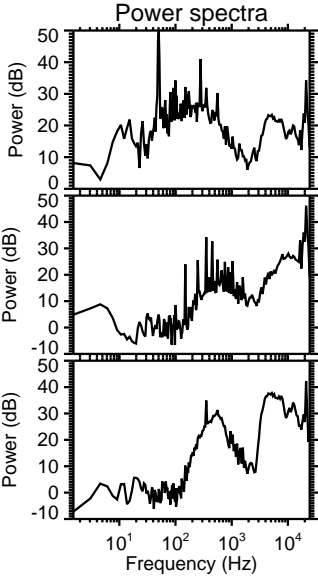
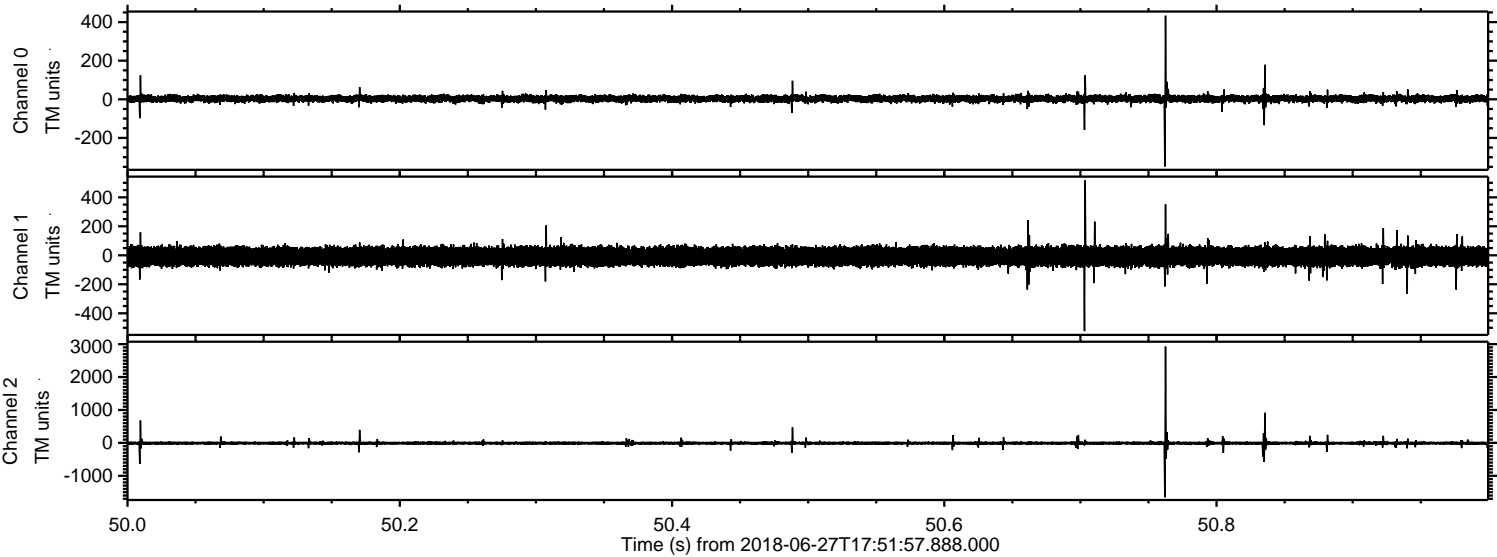


Channel 0
mn: -944
mx: 413
 μ : 2.8
 σ : 11.5

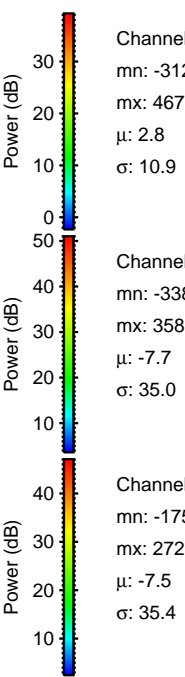
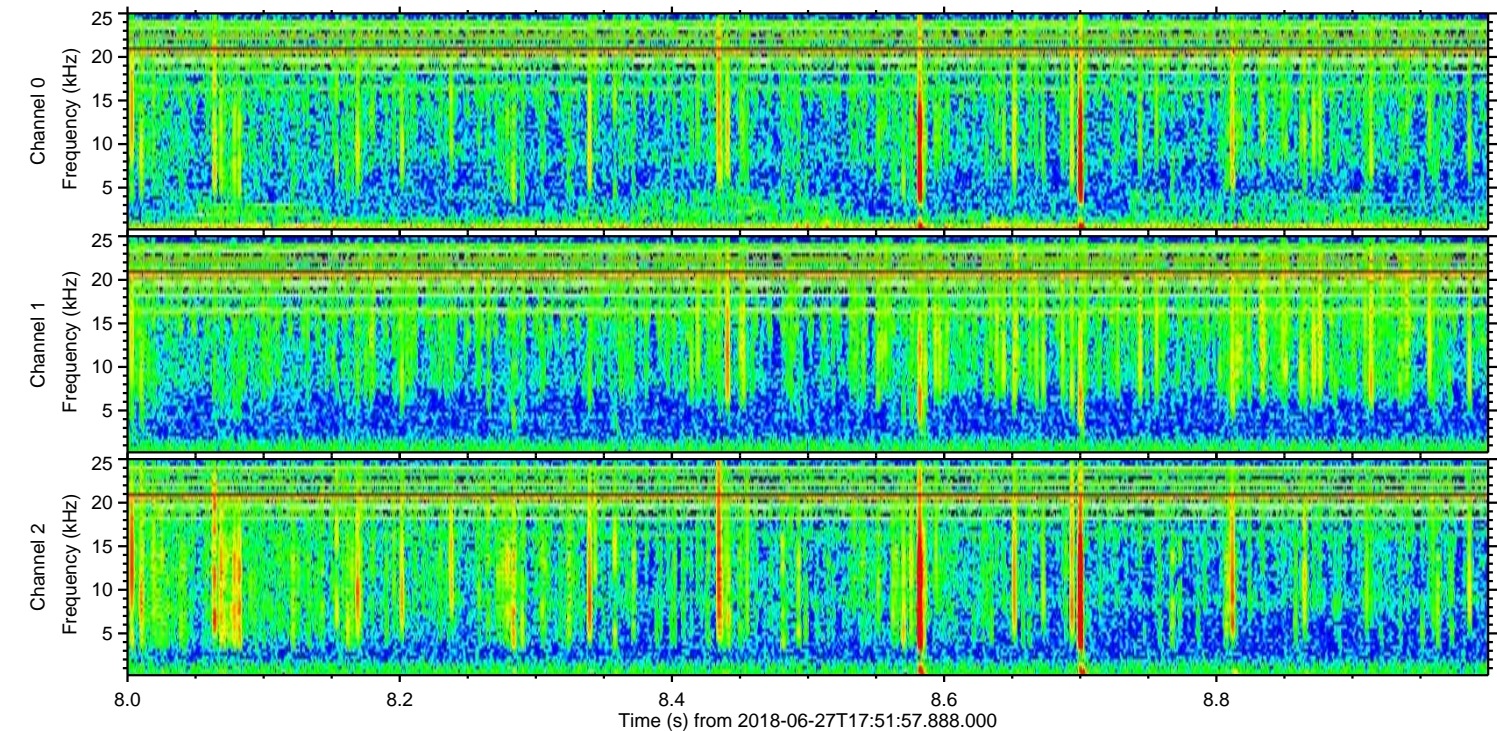
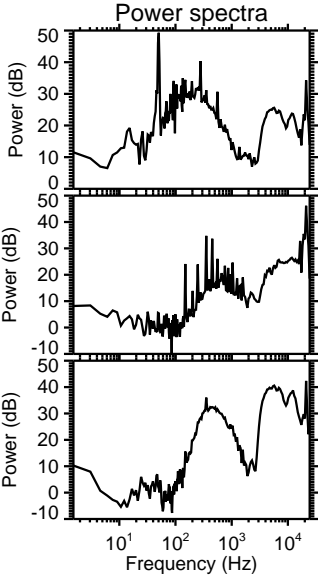
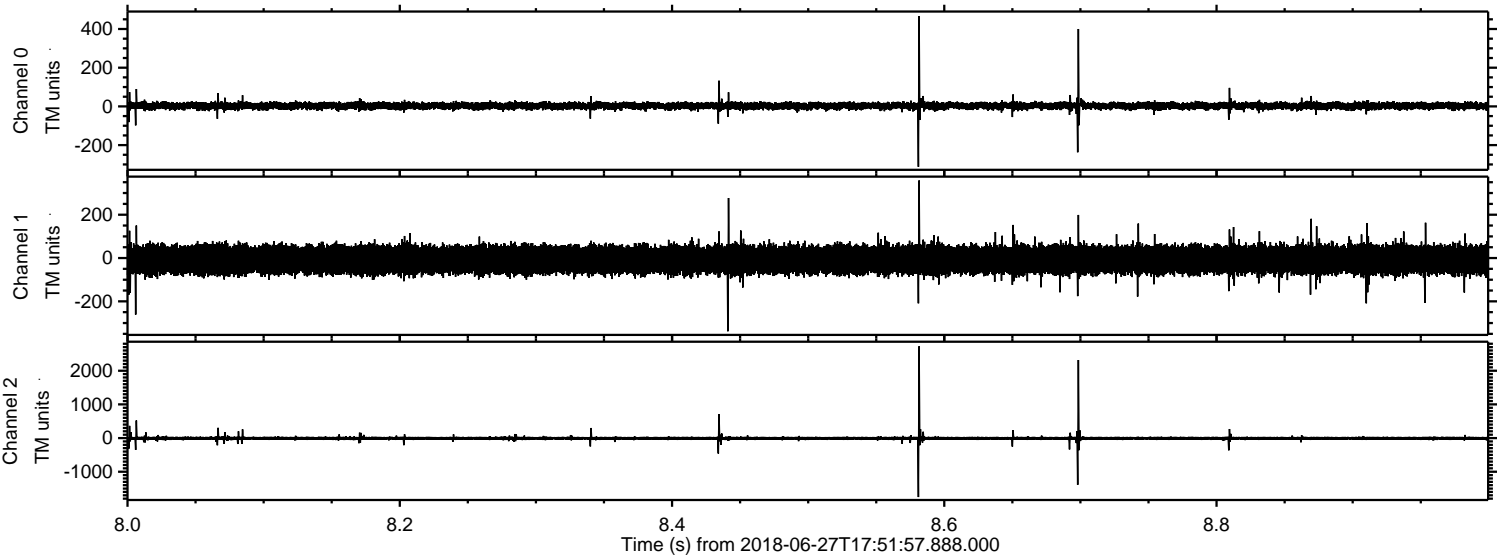
Channel 1
mn: -1580
mx: 2145
 μ : -7.6
 σ : 40.4

Channel 2
mn: -2319
mx: 3061
 μ : -7.6
 σ : 34.5

Processed Wed Jun 27 19:59:42 2018 by ELM ver.2012-10-06 from 001__elm20180627_175156__dat00.bin



Processed Wed Jun 27 19:59:43 2018 by ELM ver.2012-10-06 from 001__elm20180627_175156__dat00.bin



Channel 0

mn: -312
mx: 467
 μ : 2.8
 σ : 10.9

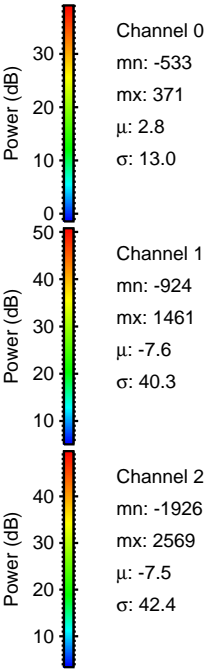
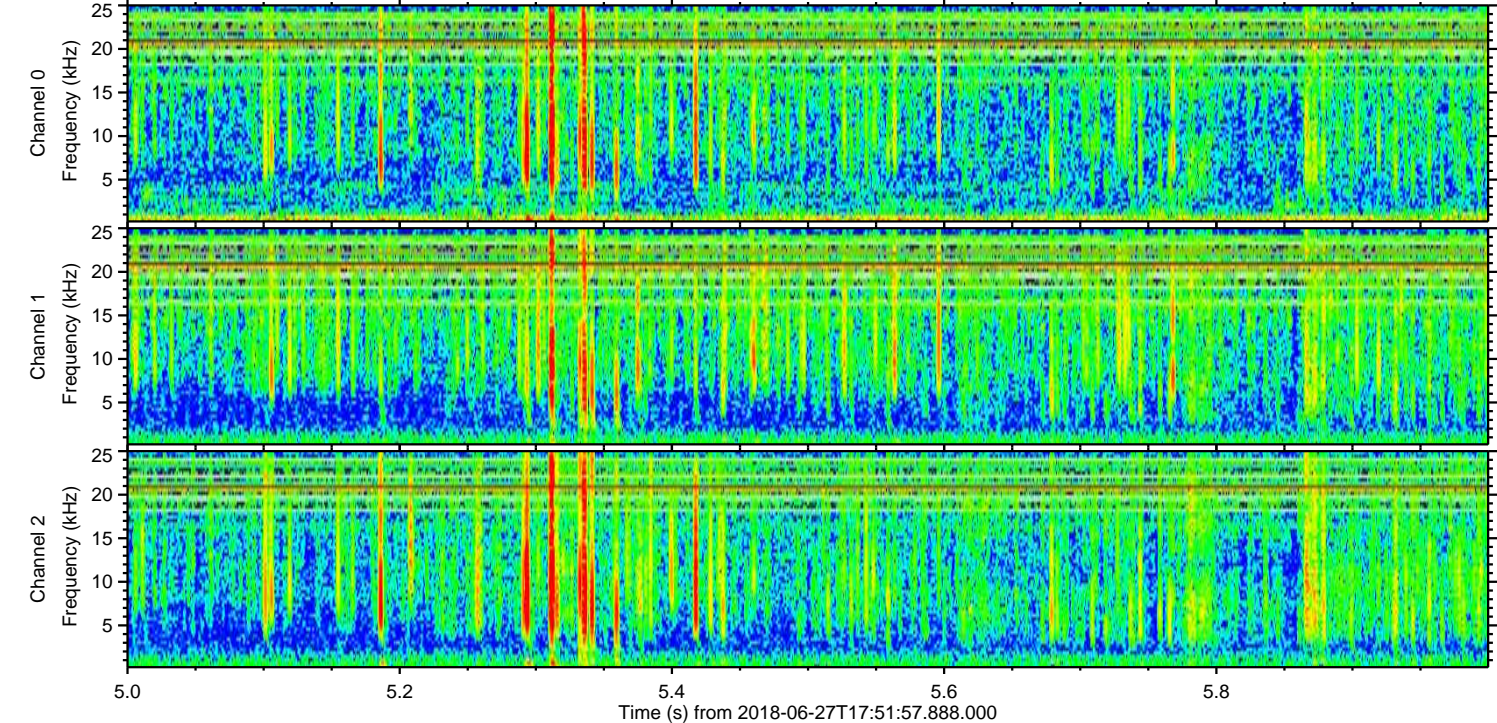
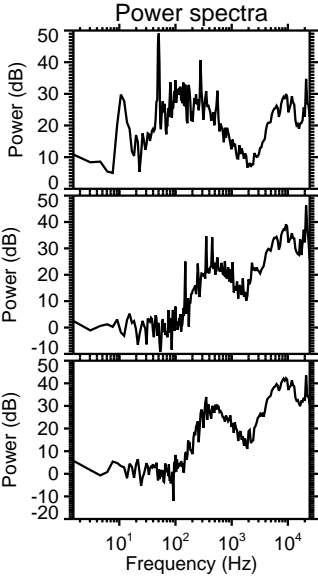
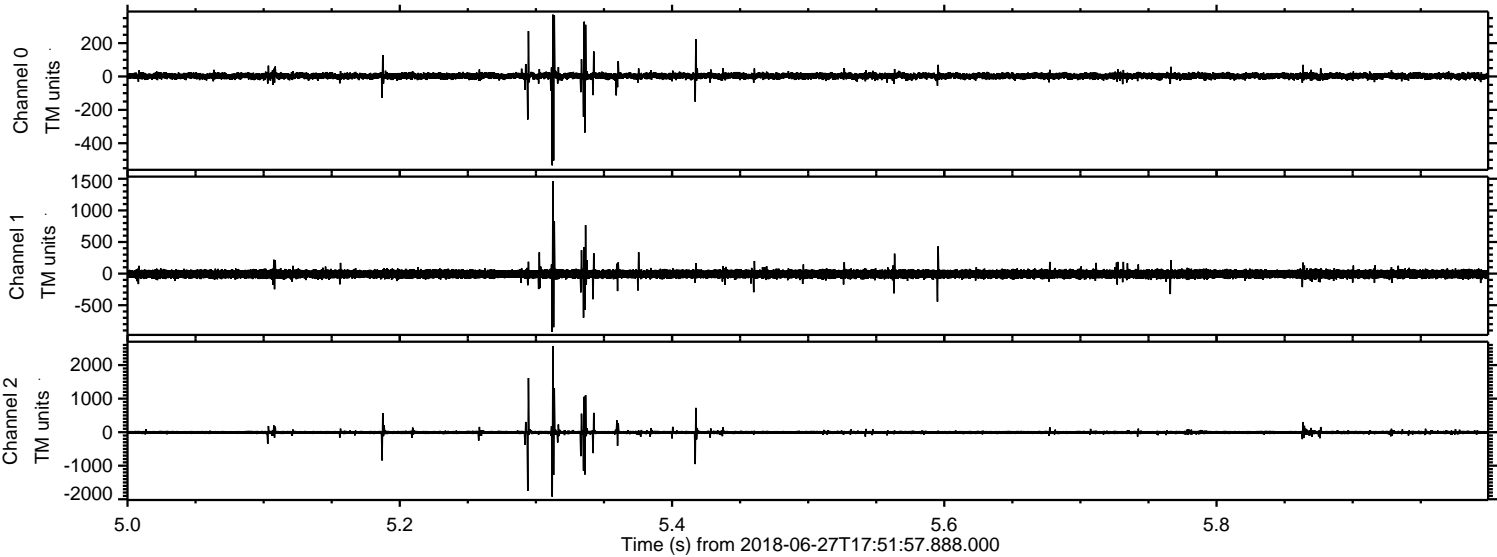
Channel 1

mn: -338
mx: 358
 μ : -7.7
 σ : 35.0

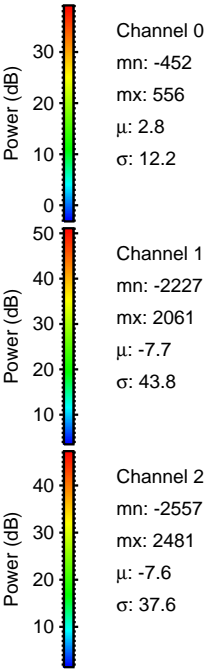
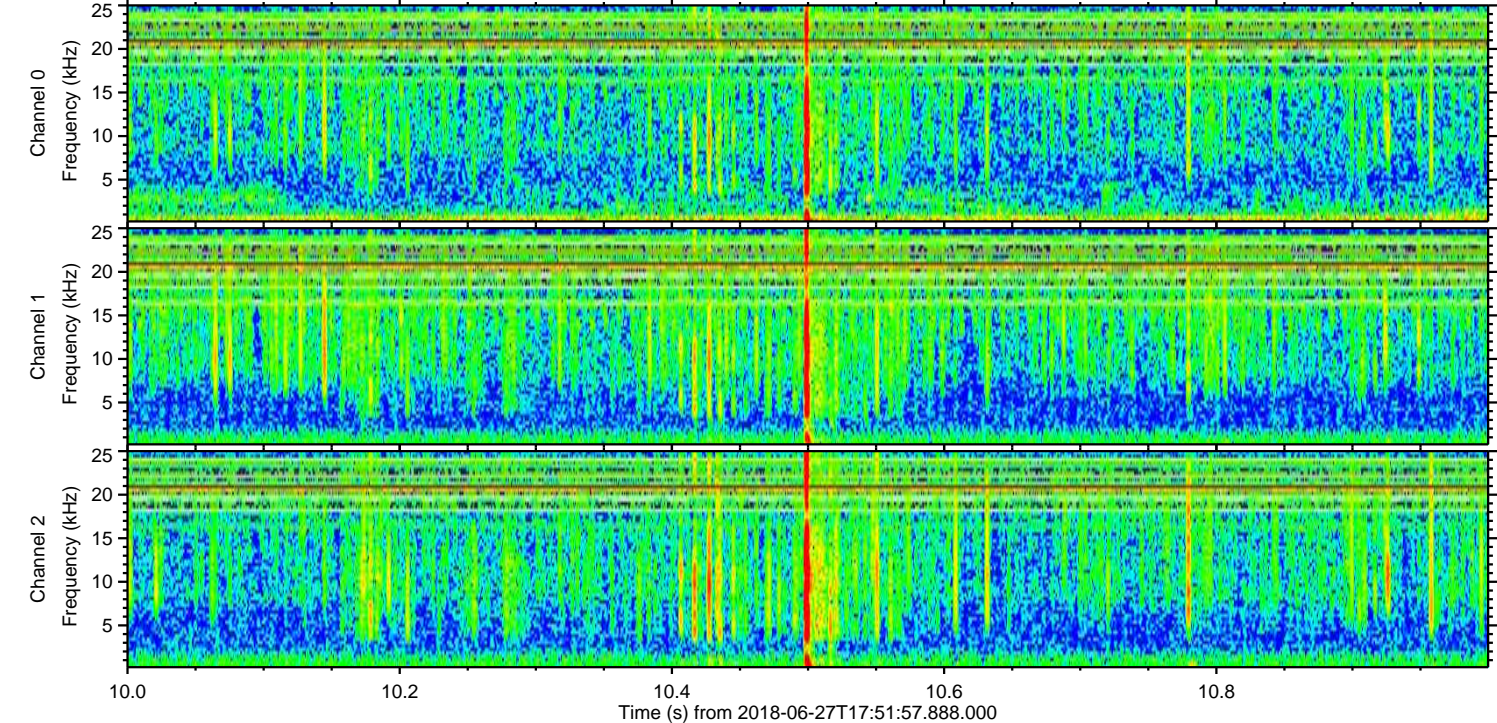
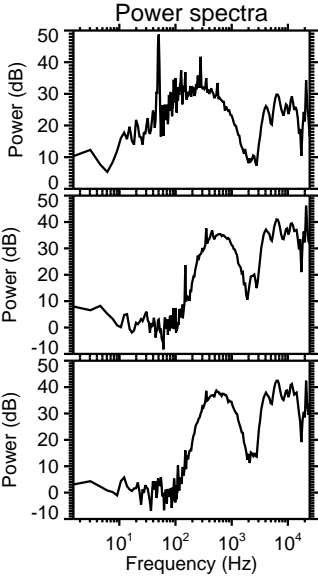
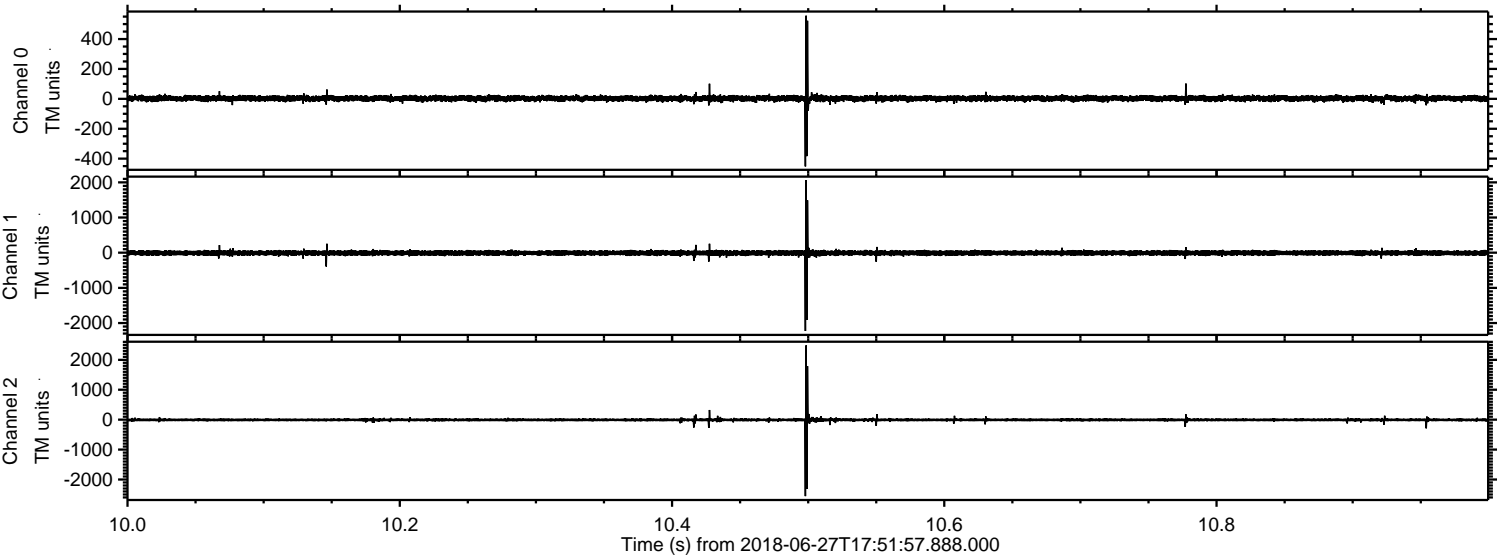
Channel 2

mn: -1752
mx: 2725
 μ : -7.5
 σ : 35.4

Processed Wed Jun 27 19:59:43 2018 by ELM ver.2012-10-06 from 001__elm20180627_175156__dat00.bin



Processed Wed Jun 27 19:59:44 2018 by ELM ver.2012-10-06 from 001__elm20180627_175156__dat00.bin



Processed Wed Jun 27 19:59:45 2018 by ELM ver.2012-10-06 from 001__elm20180627_175156__dat00.bin

