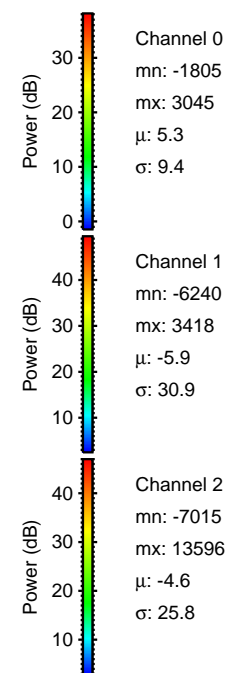
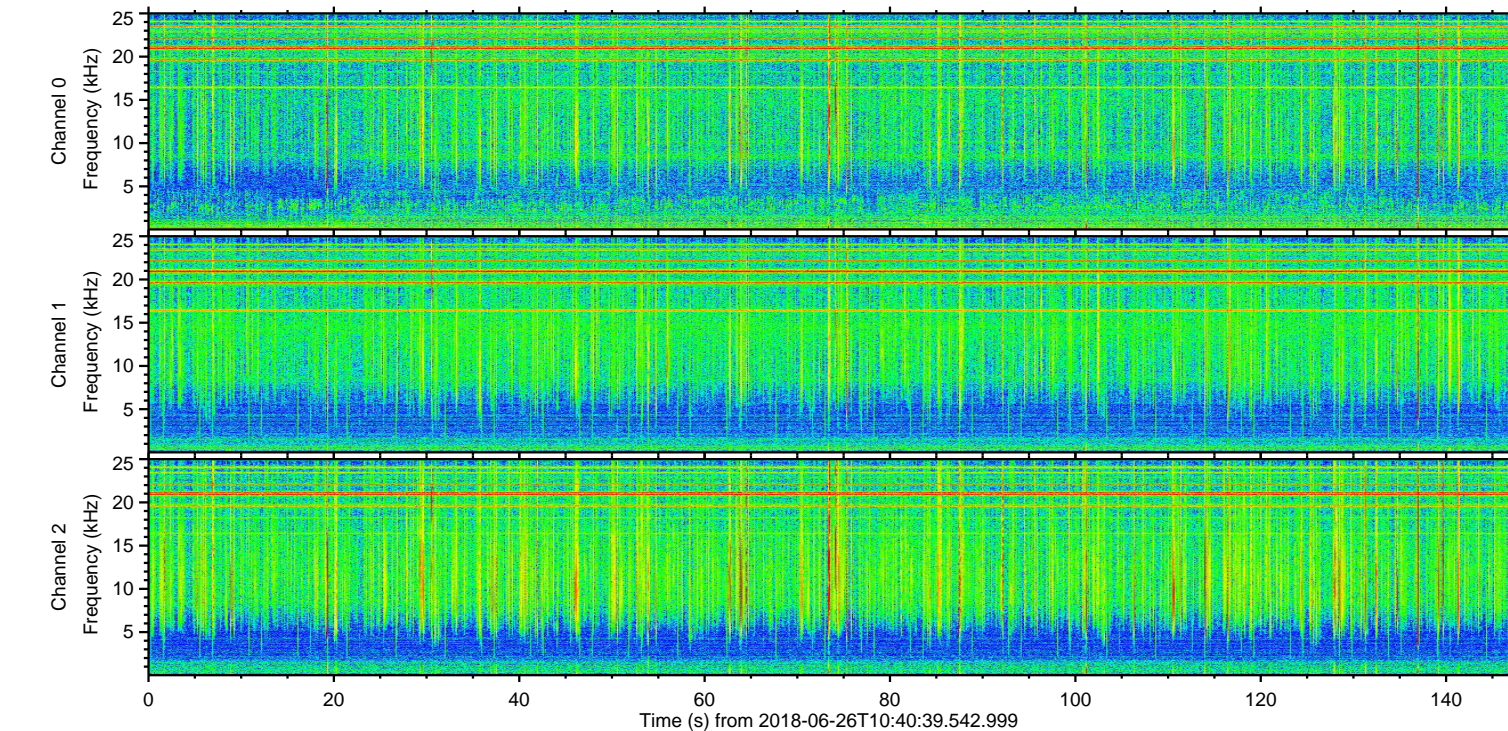
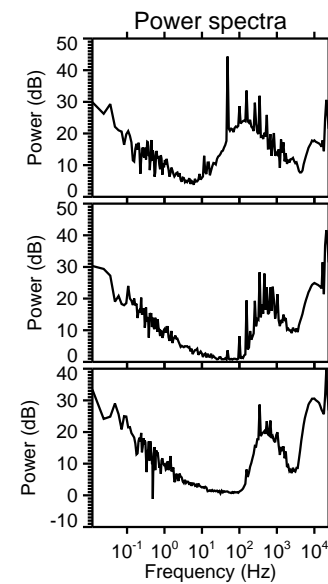
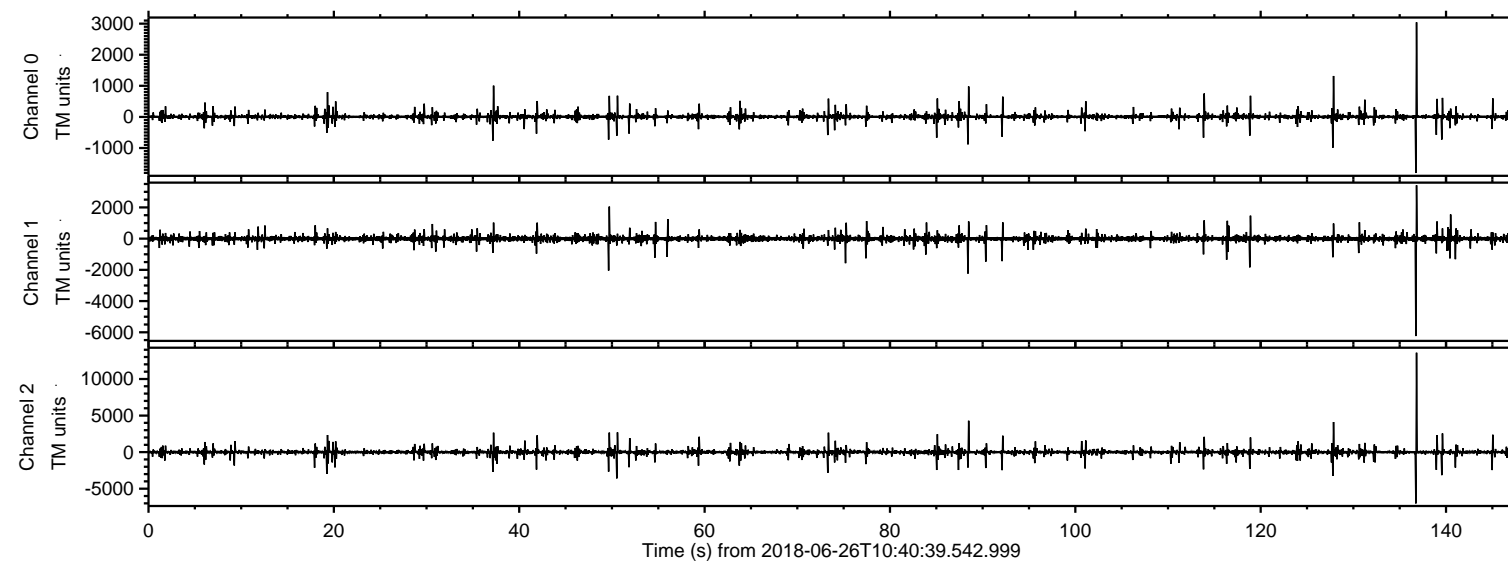


# ELMAVAN 3D WAVEFORMS (Measured data sampled at 50 kHz) 51000 packets of 144 samples from 2018-06-26T10:40:39.542.999.

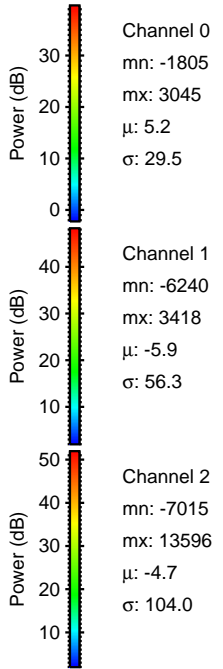
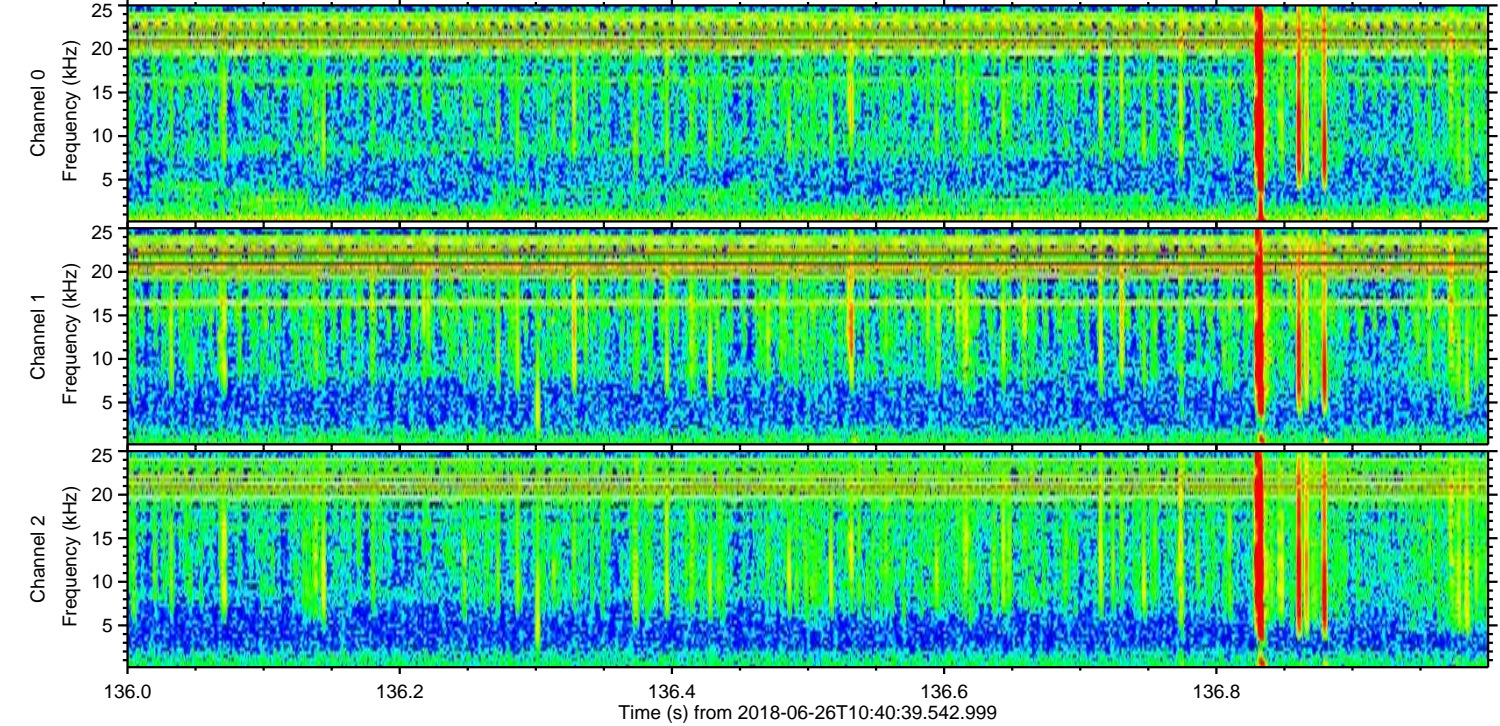
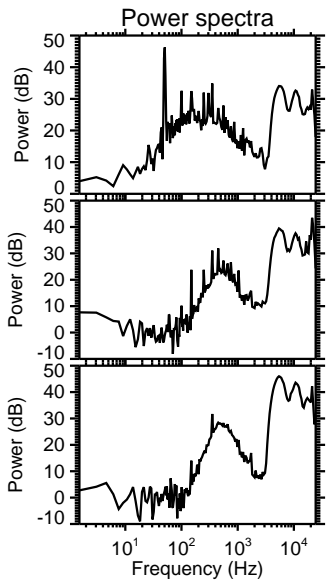
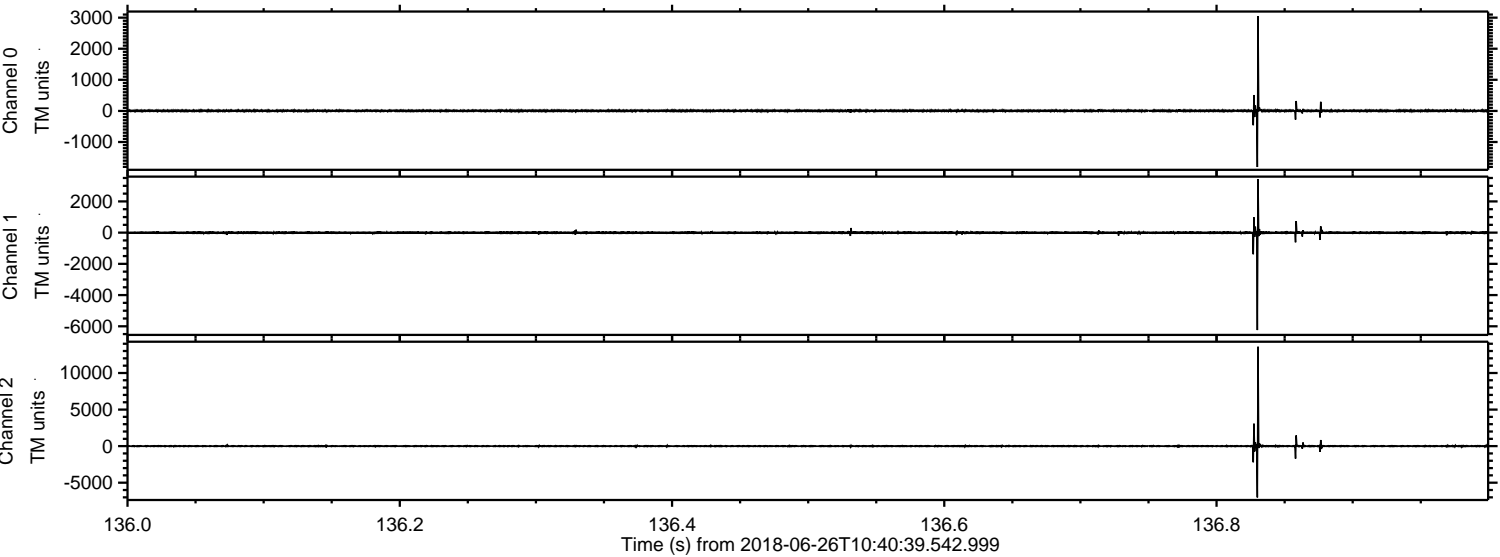
Processed Tue Jun 26 12:49:04 2018 by ELM ver.2012-10-06 from 001\_\_elm20180626\_104038\_\_dat00.bin





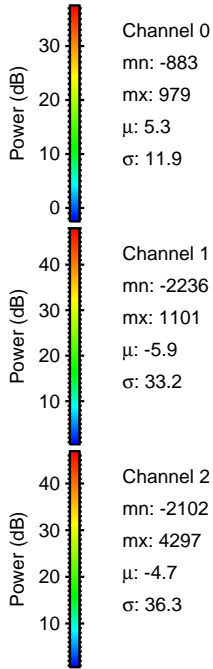
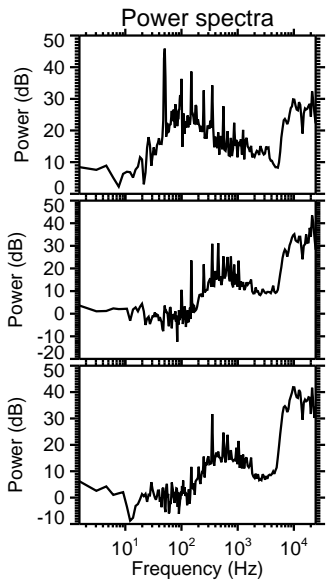
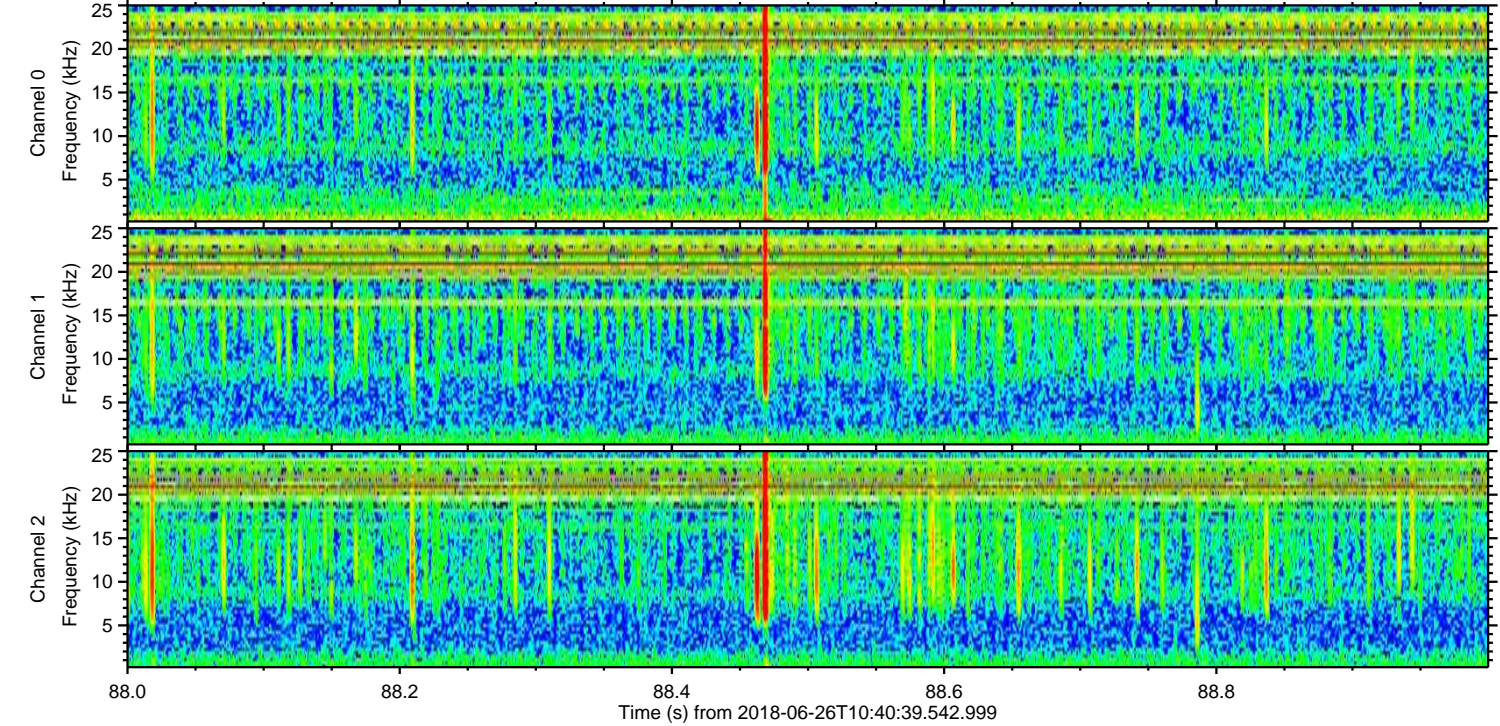
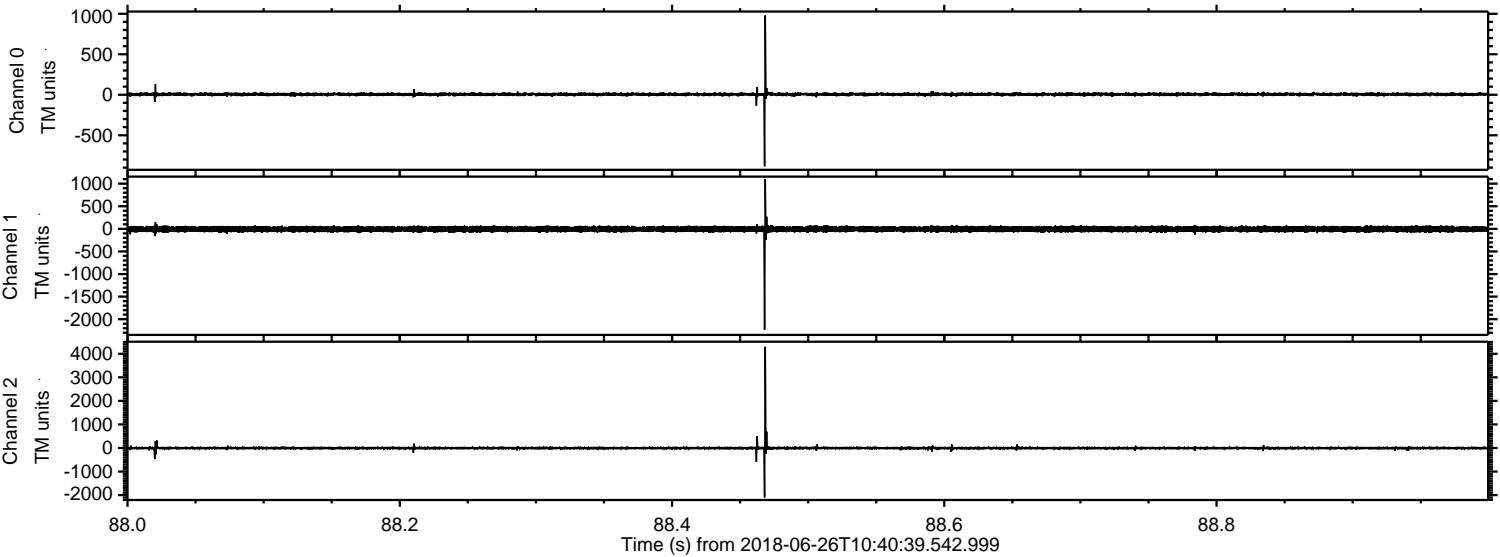
ELMAVAN 3D WAVEFORMS (Measured data sampled at 50 kHz) 51000 packets of 144 samples from 2018-06-26T10:40:39.542.999. Part 137/147

Processed Tue Jun 26 12:49:10 2018 by ELM ver.2012-10-06 from 001\_\_elm20180626\_104038\_\_dat00.bin





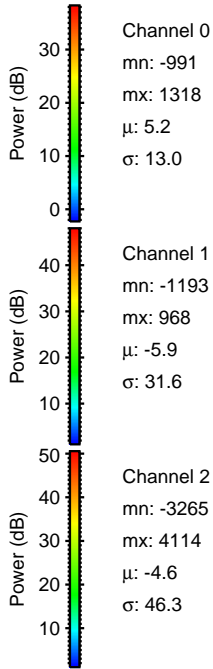
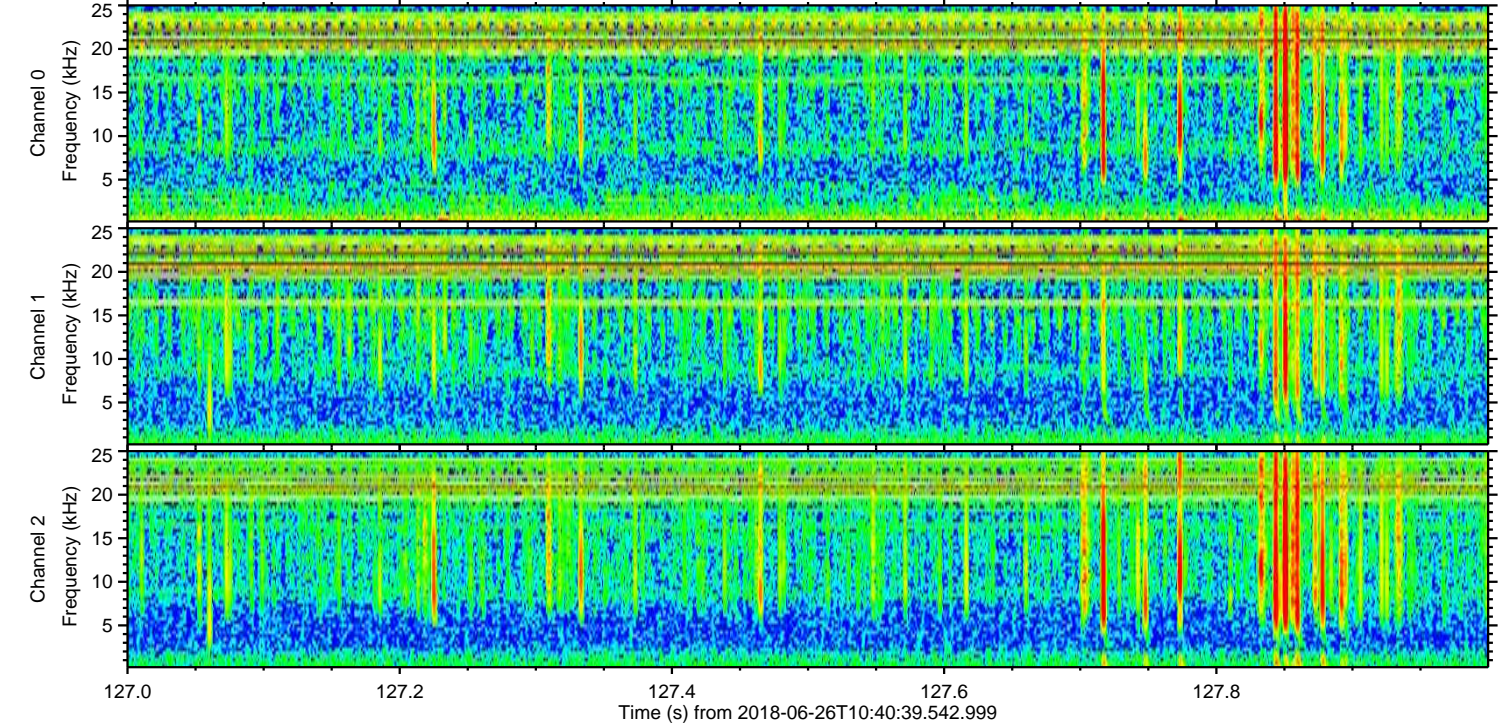
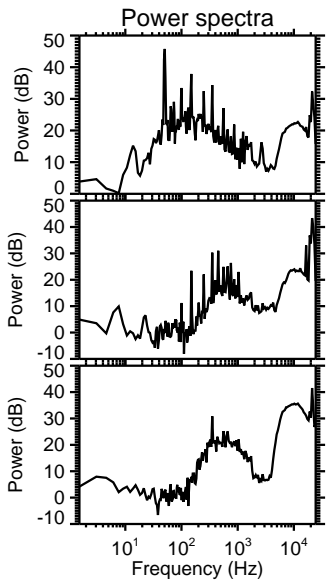
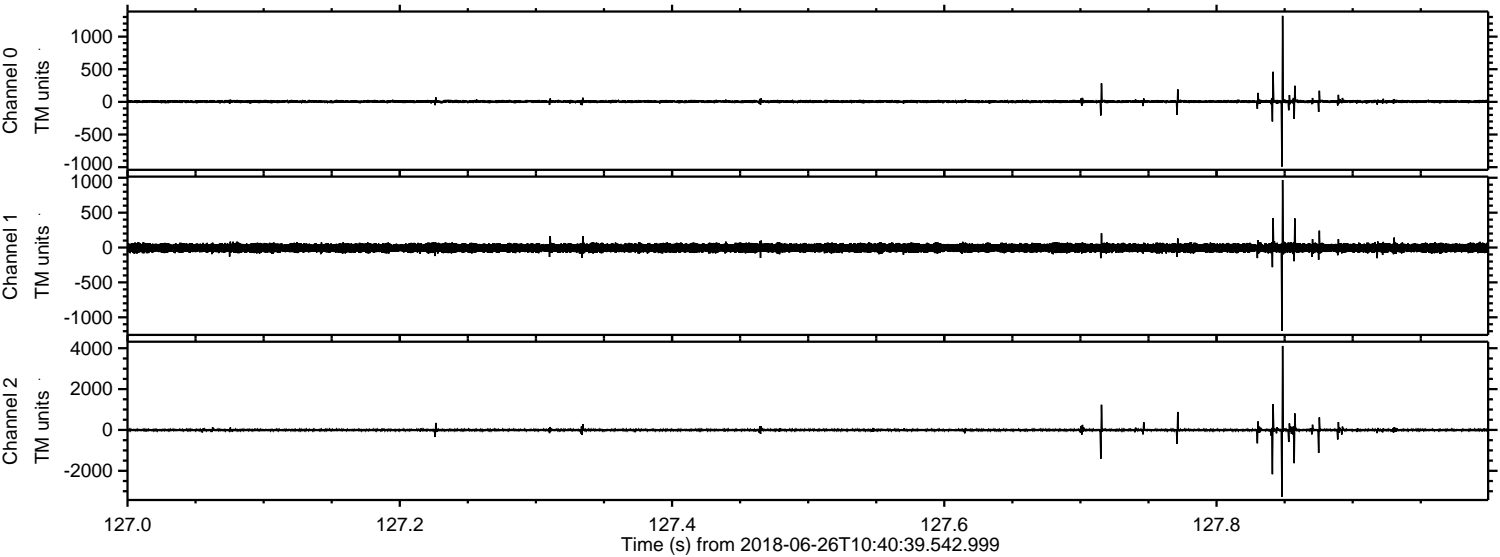
Processed Tue Jun 26 12:49:11 2018 by ELM ver.2012-10-06 from 001\_\_elm20180626\_104038\_\_dat00.bin





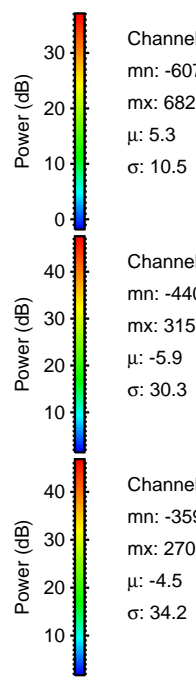
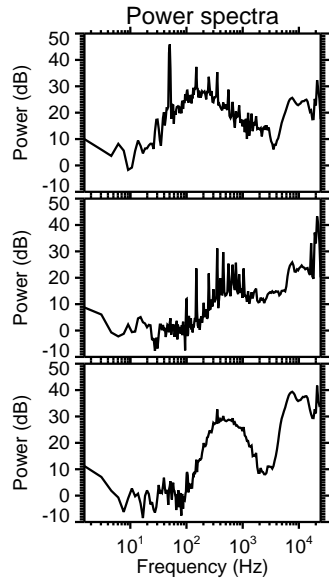
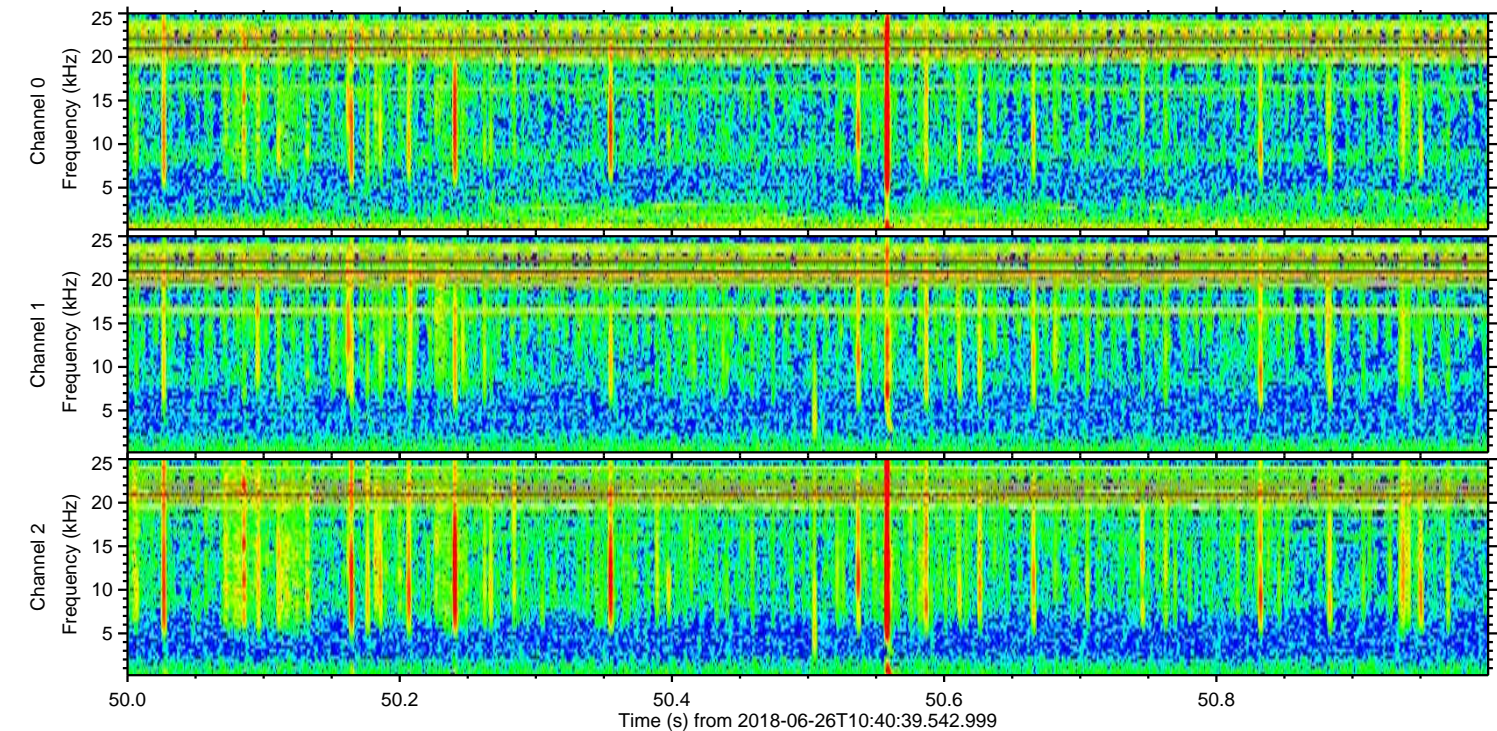
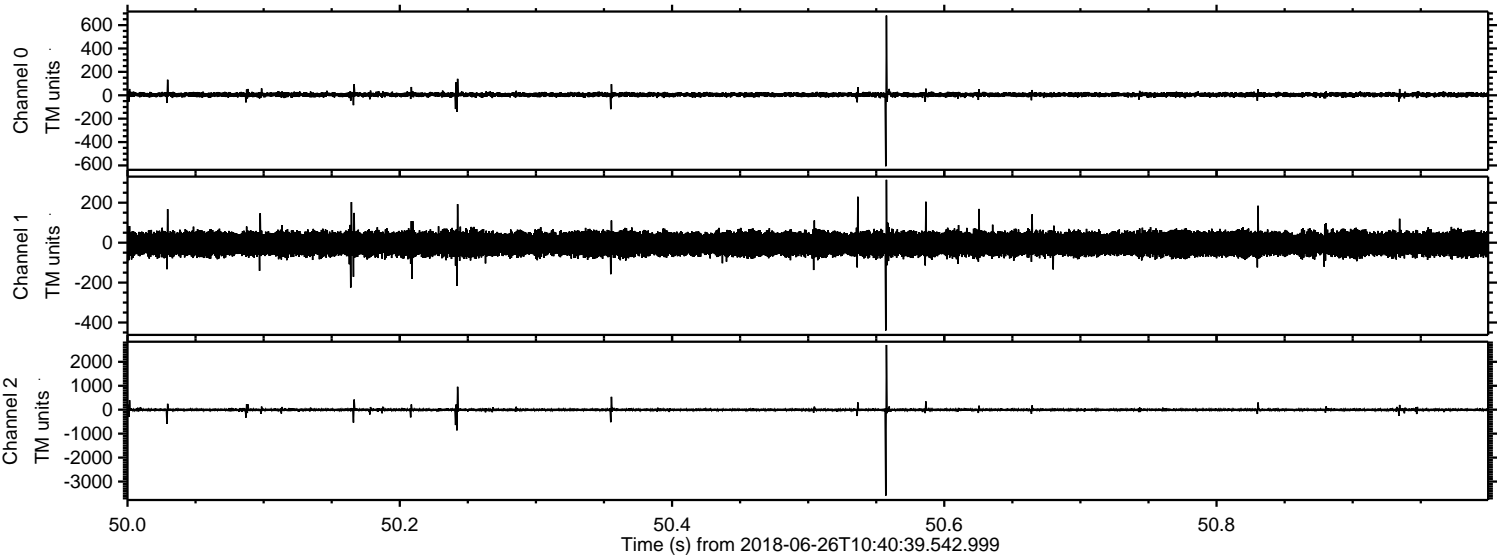
ELMAVAN 3D WAVEFORMS (Measured data sampled at 50 kHz) 51000 packets of 144 samples from 2018-06-26T10:40:39.542.999. Part 128/147

Processed Tue Jun 26 12:49:11 2018 by ELM ver.2012-10-06 from 001\_\_elm20180626\_104038\_\_dat00.bin





Processed Tue Jun 26 12:49:12 2018 by ELM ver.2012-10-06 from 001\_\_elm20180626\_104038\_\_dat00.bin



Channel 0  
mn: -607  
mx: 682  
 $\mu$ : 5.3  
 $\sigma$ : 10.5

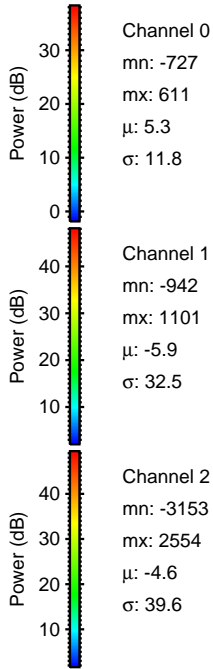
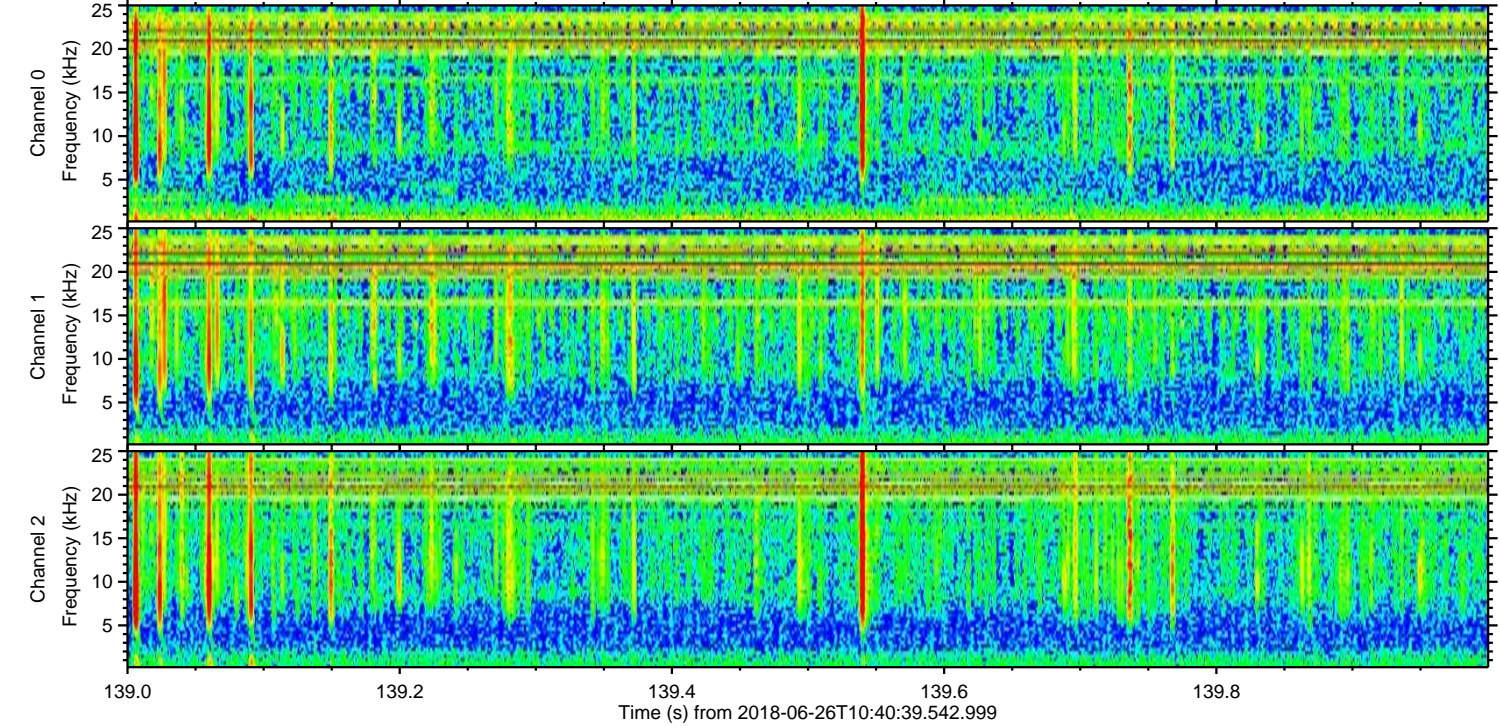
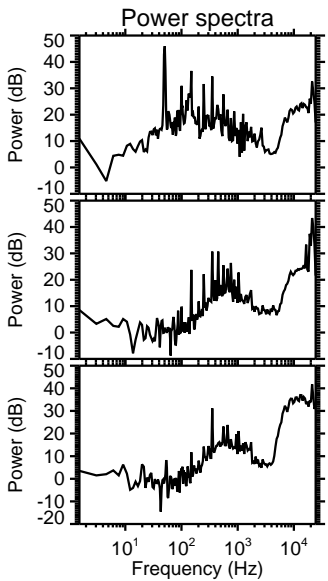
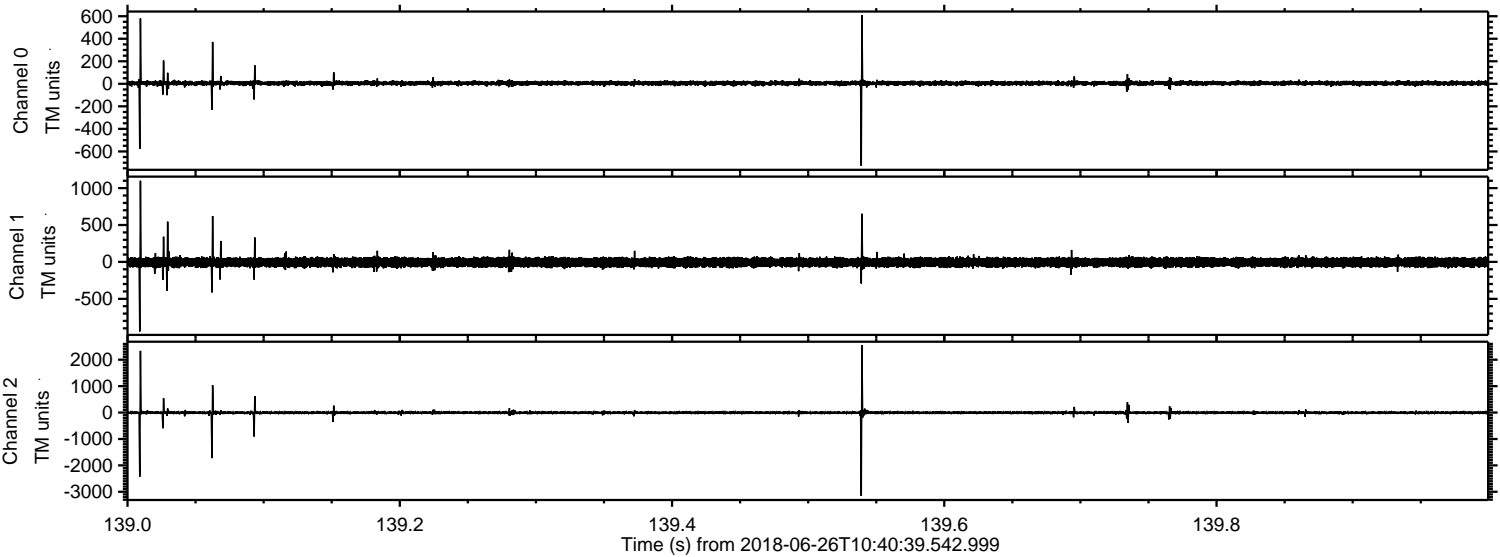
Channel 1  
mn: -440  
mx: 315  
 $\mu$ : -5.9  
 $\sigma$ : 30.3

Channel 2  
mn: -3590  
mx: 2703  
 $\mu$ : -4.5  
 $\sigma$ : 34.2



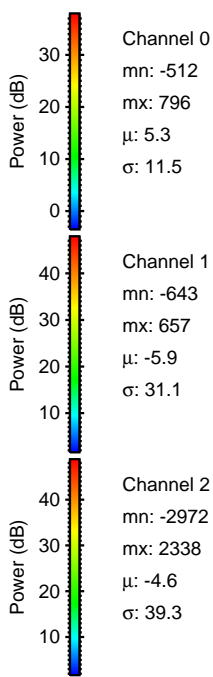
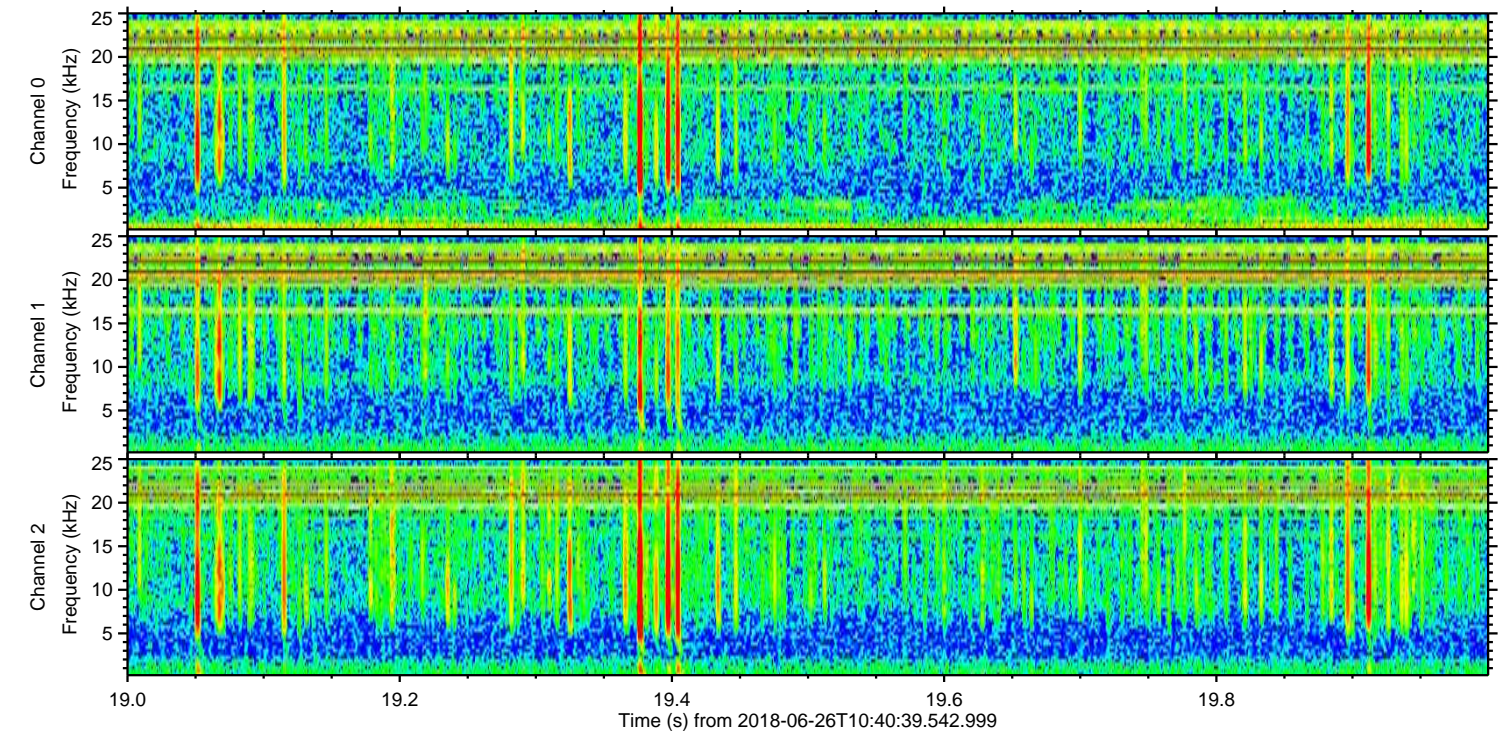
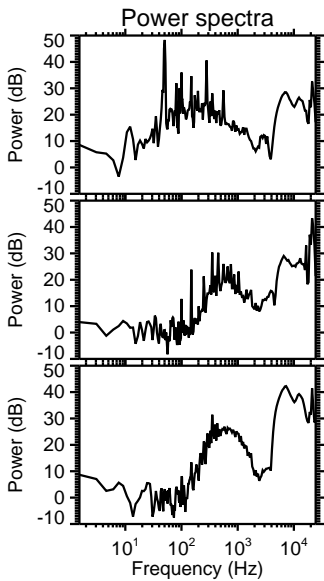
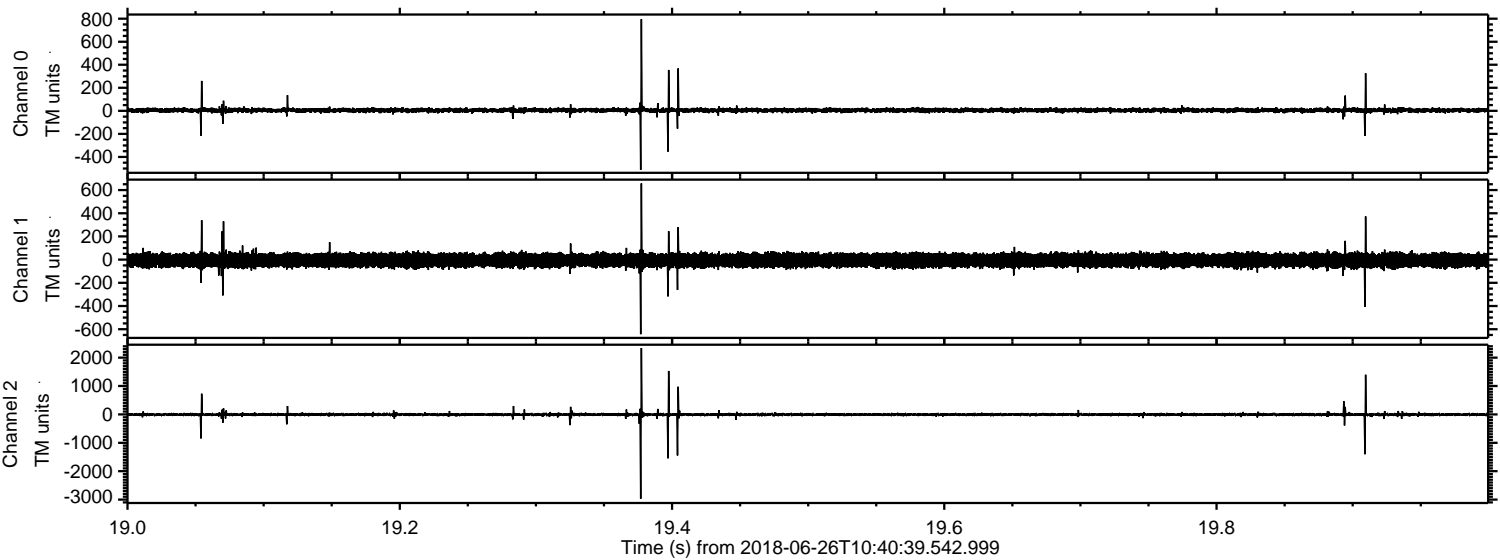
ELMAVAN 3D WAVEFORMS (Measured data sampled at 50 kHz) 51000 packets of 144 samples from 2018-06-26T10:40:39.542.999. Part 140/147

Processed Tue Jun 26 12:49:13 2018 by ELM ver.2012-10-06 from 001\_\_elm20180626\_104038\_\_dat00.bin





Processed Tue Jun 26 12:49:13 2018 by ELM ver.2012-10-06 from 001\_\_elm20180626\_104038\_\_dat00.bin



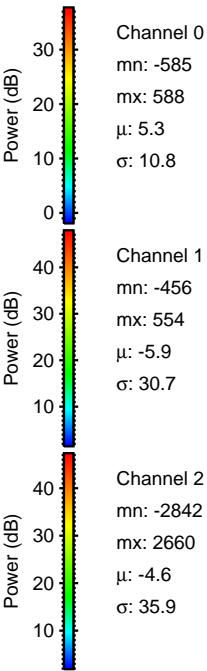
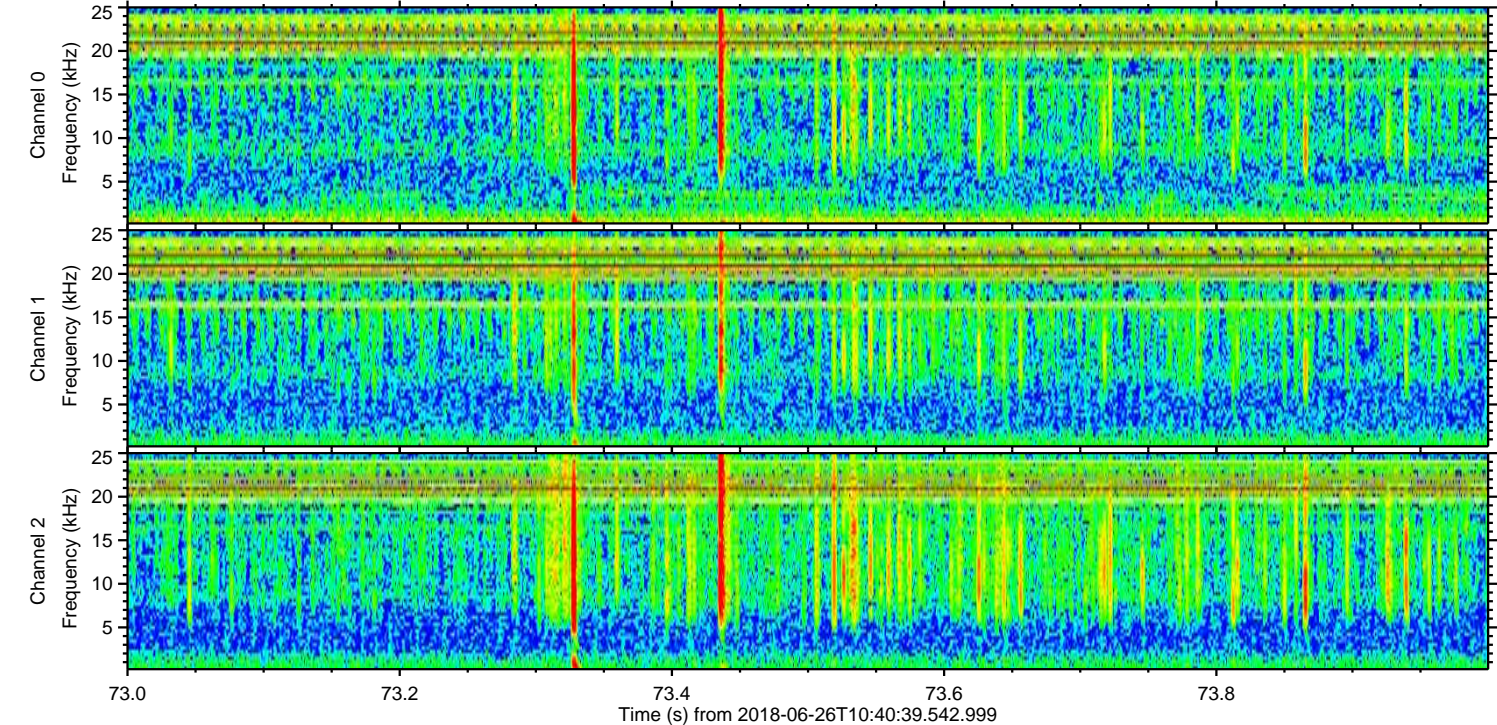
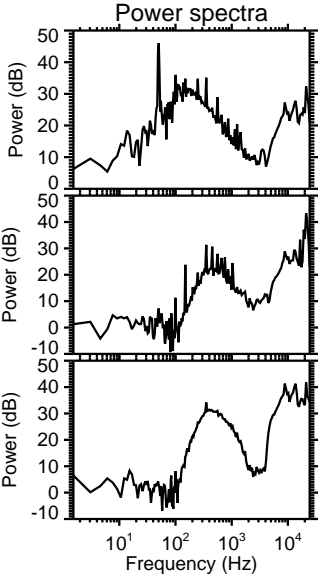
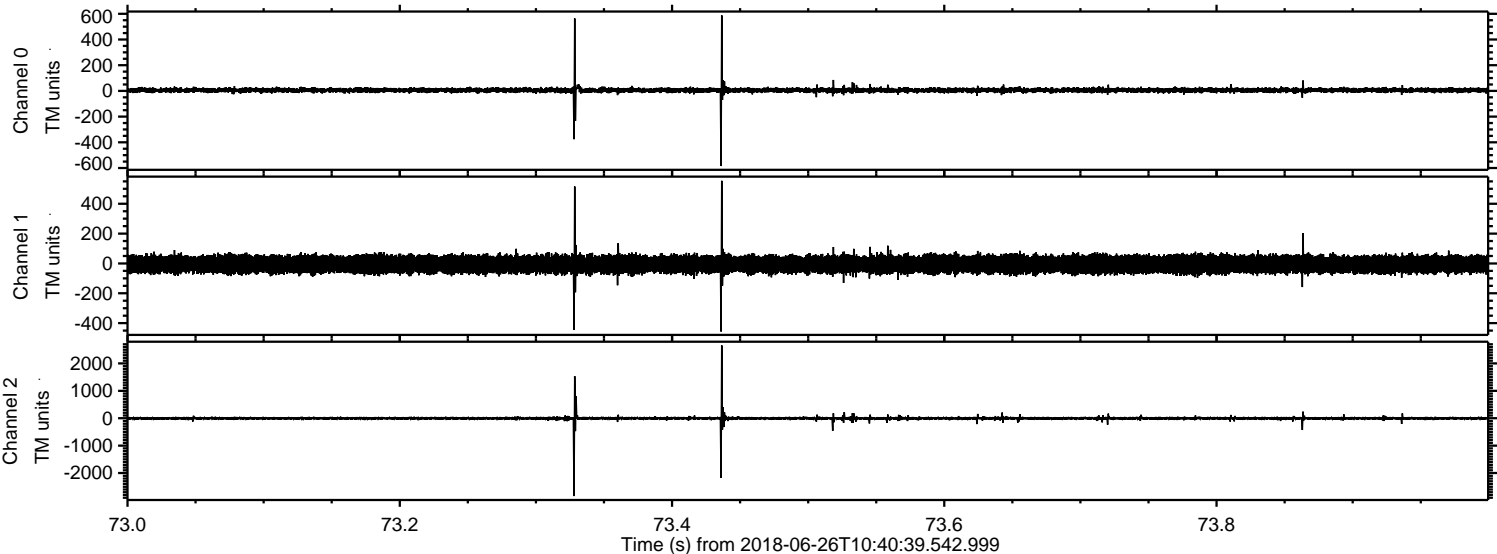
Channel 0  
mn: -512  
mx: 796  
 $\mu$ : 5.3  
 $\sigma$ : 11.5

Channel 1  
mn: -643  
mx: 657  
 $\mu$ : -5.9  
 $\sigma$ : 31.1

Channel 2  
mn: -2972  
mx: 2338  
 $\mu$ : -4.6  
 $\sigma$ : 39.3

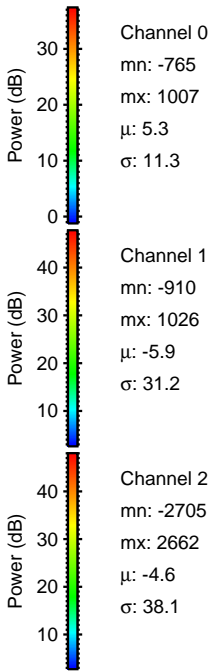
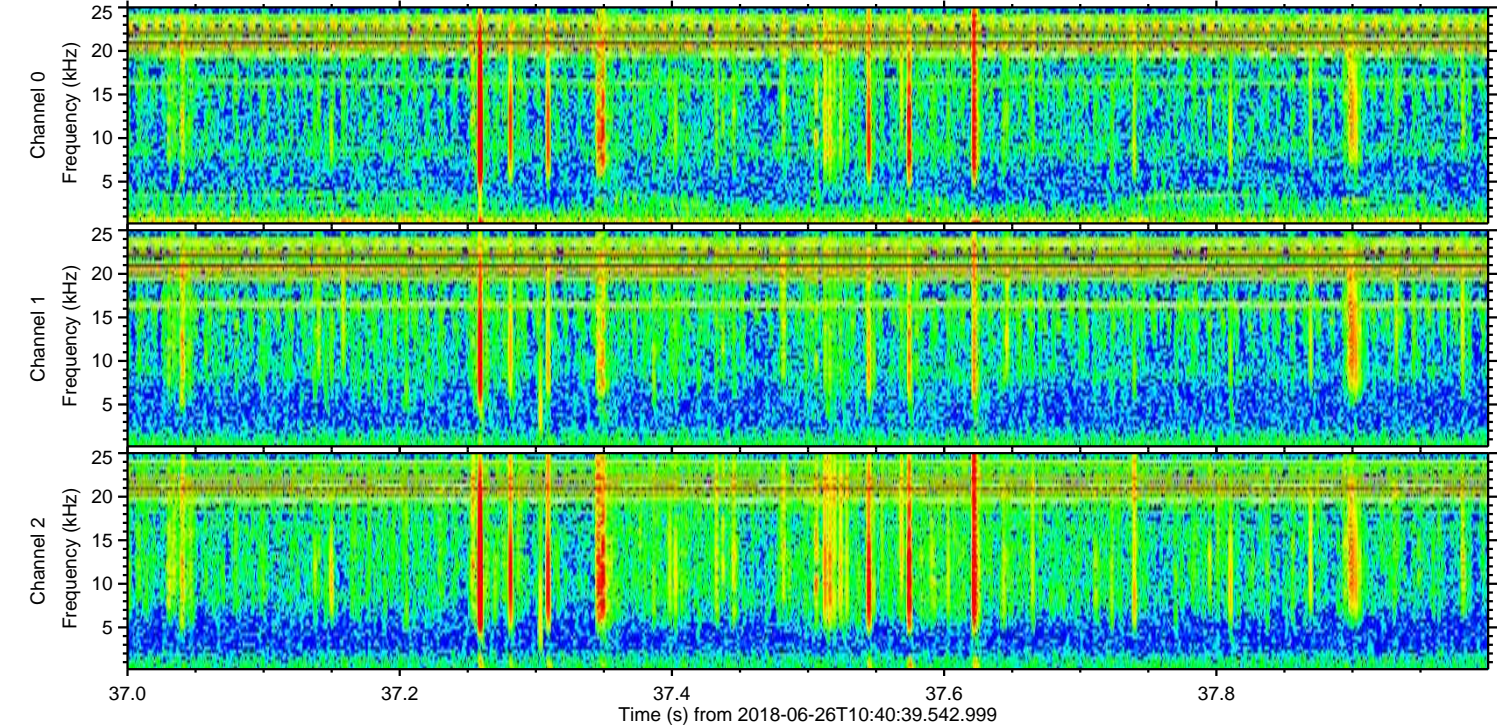
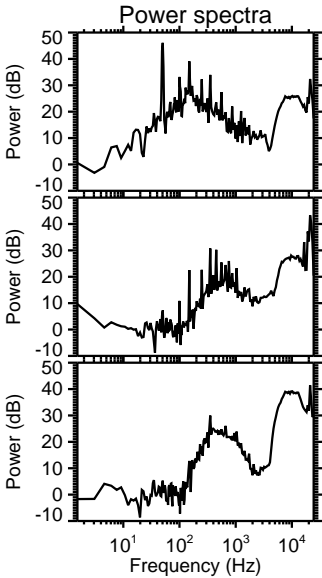
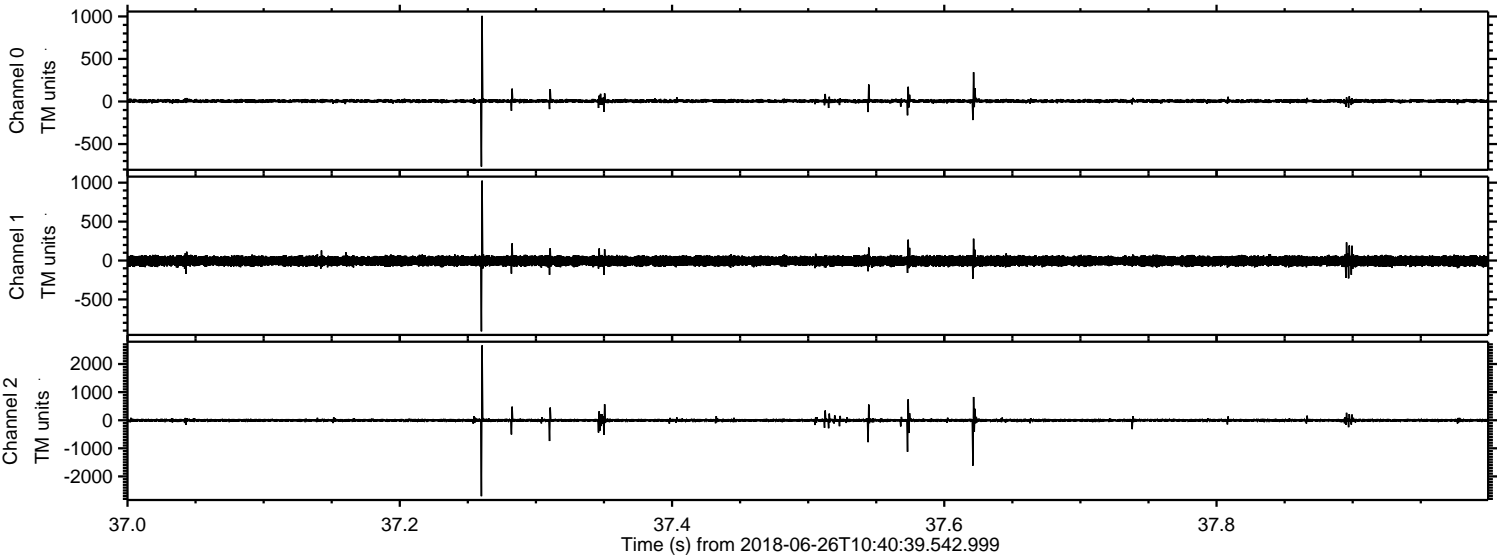


Processed Tue Jun 26 12:49:14 2018 by ELM ver.2012-10-06 from 001\_\_elm20180626\_104038\_\_dat00.bin





Processed Tue Jun 26 12:49:15 2018 by ELM ver.2012-10-06 from 001\_\_elm20180626\_104038\_\_dat00.bin





Processed Tue Jun 26 12:49:15 2018 by ELM ver.2012-10-06 from 001\_\_elm20180626\_104038\_\_dat00.bin

