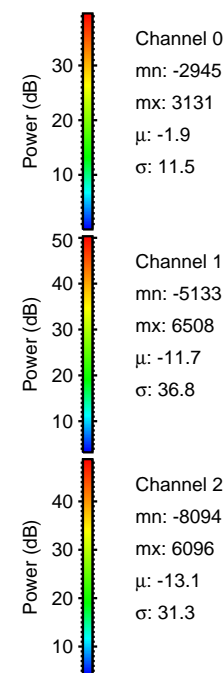
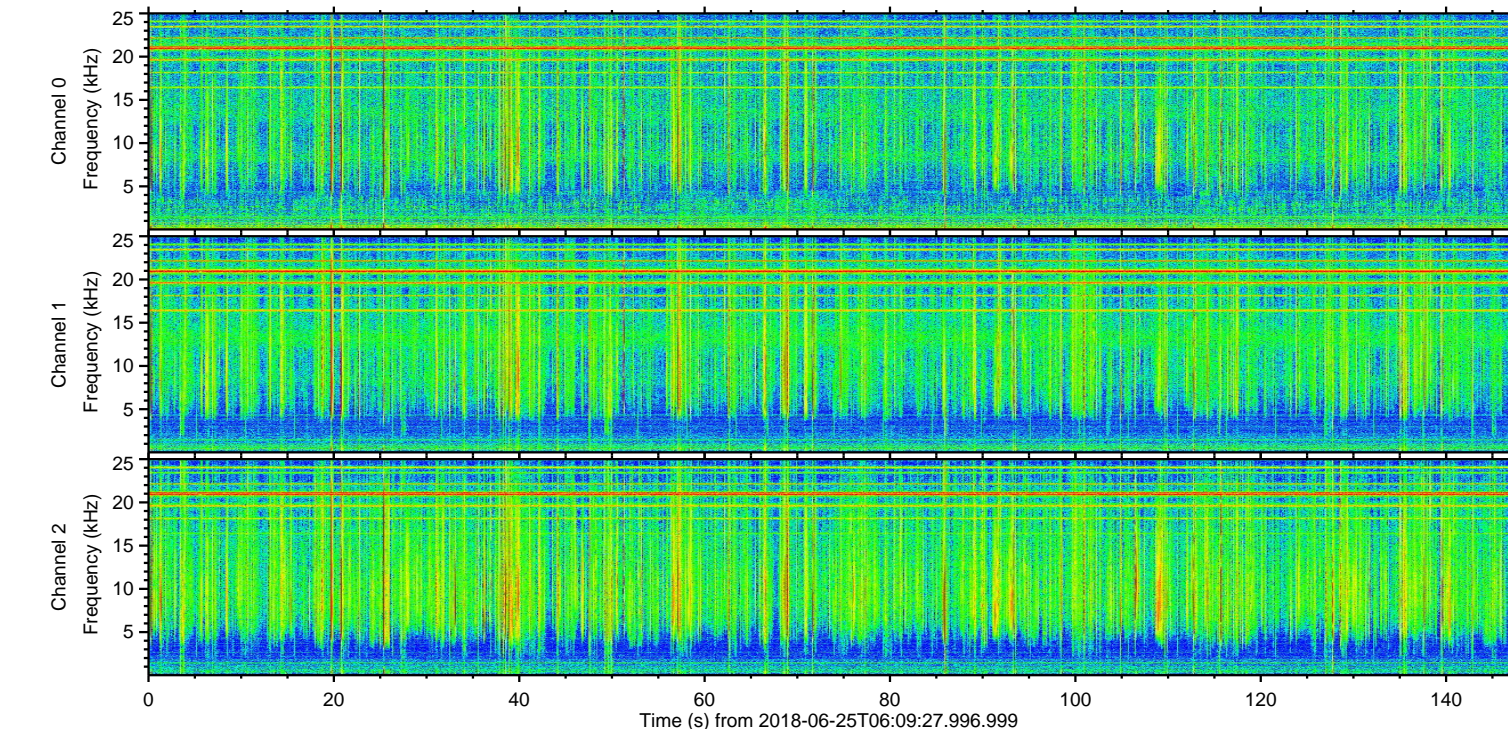
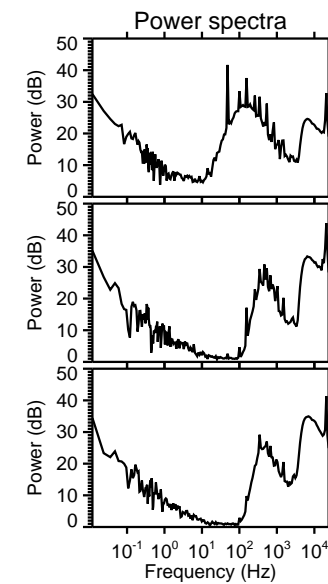
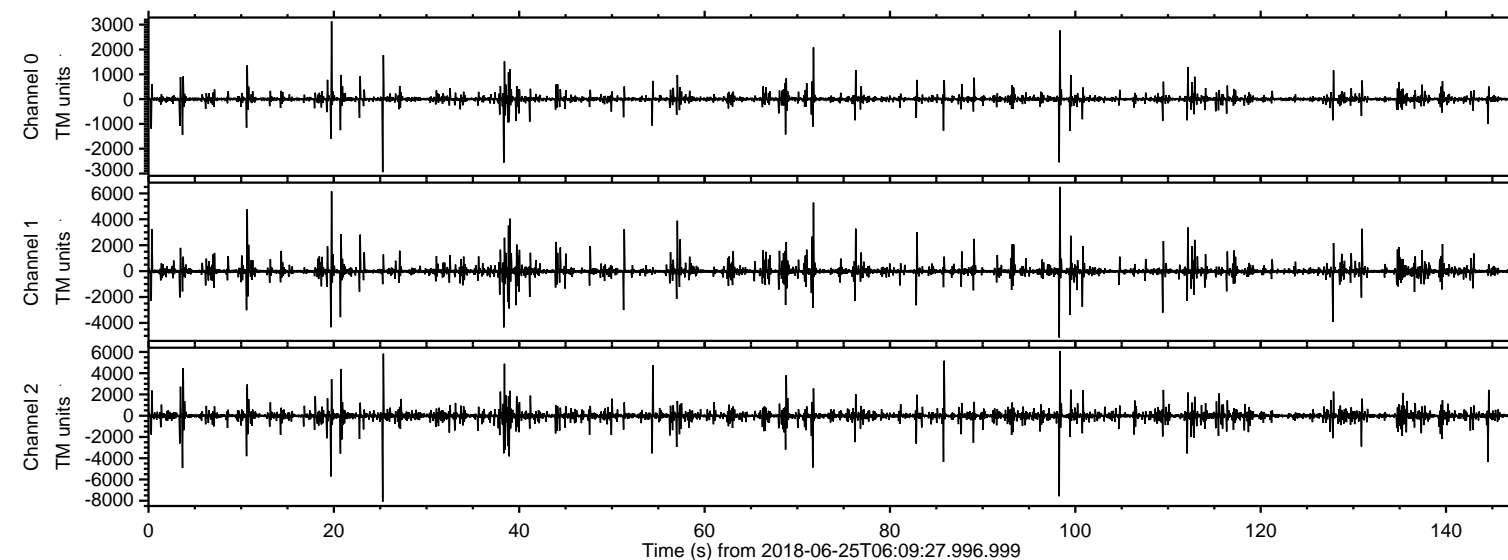
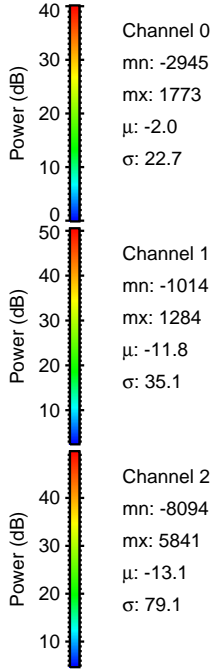
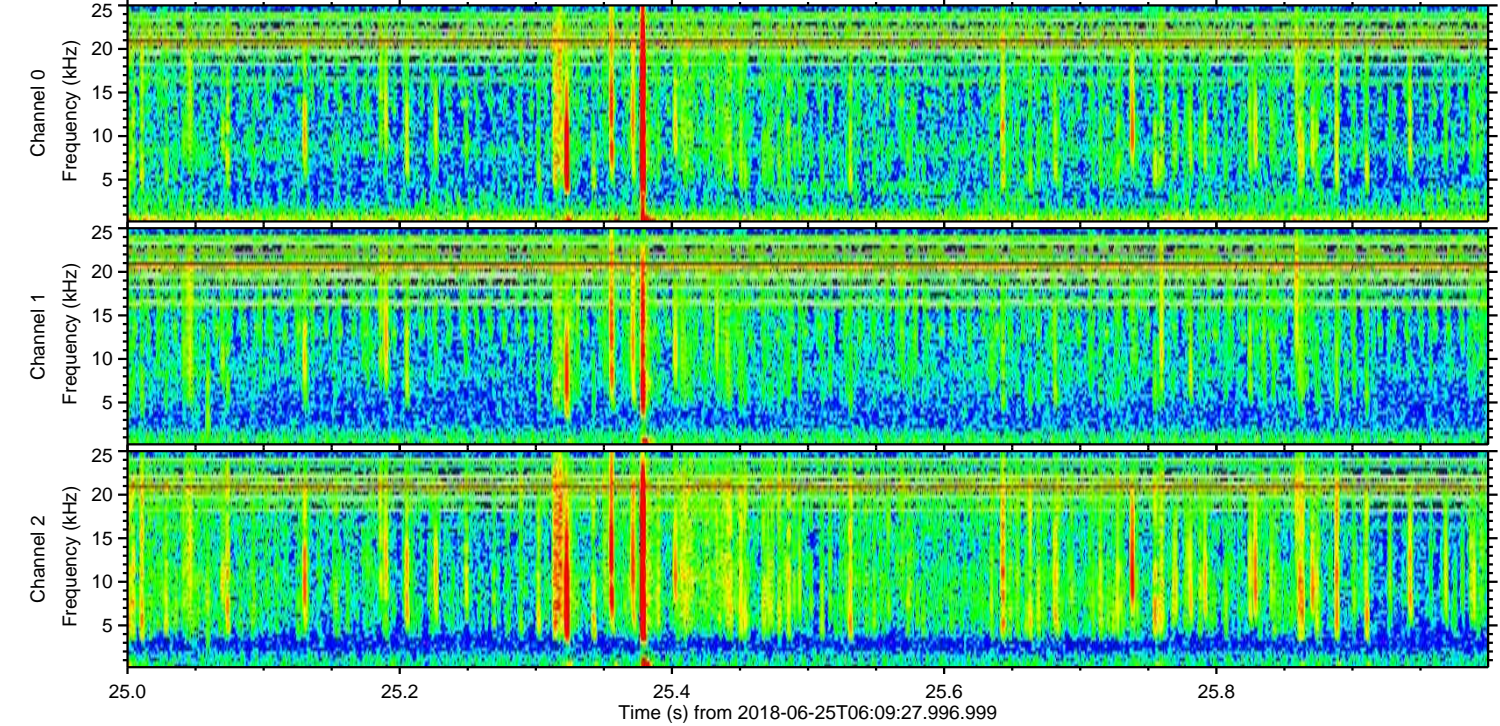
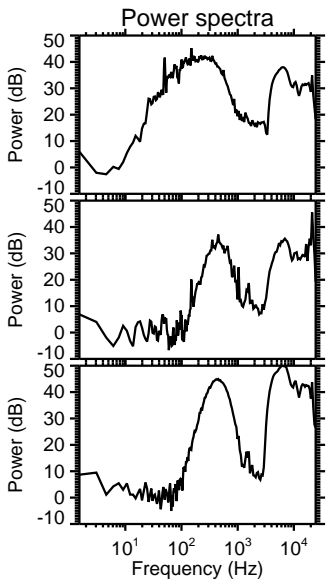
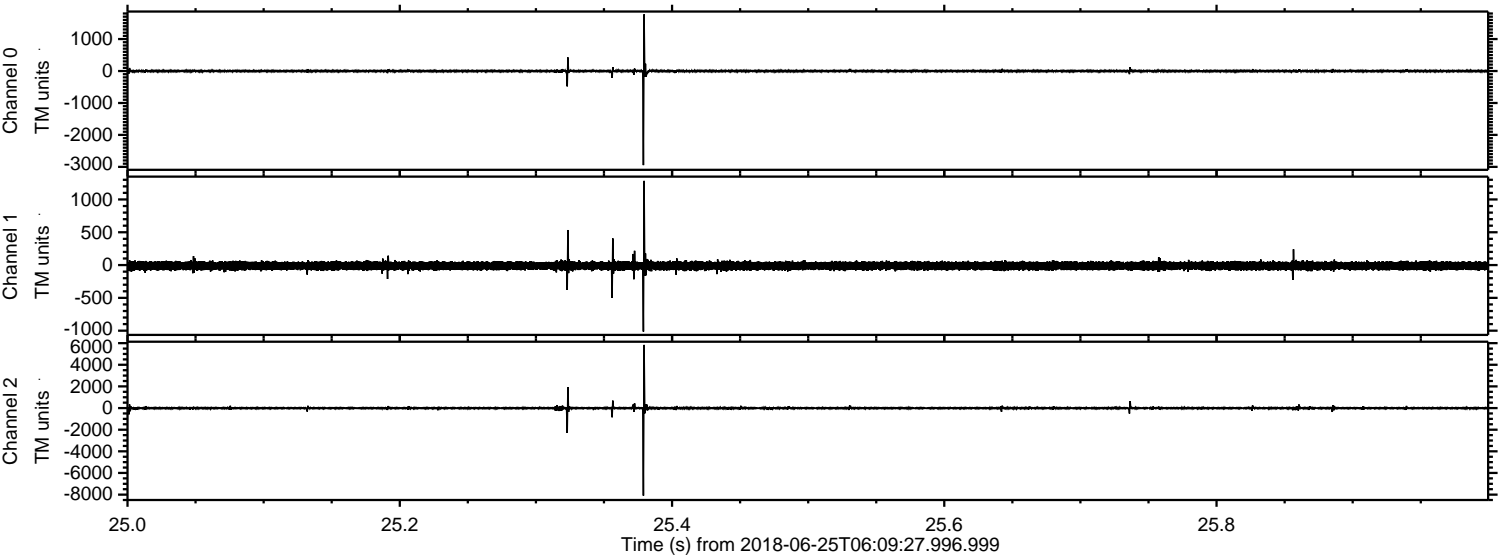


ELMAVAN 3D WAVEFORMS (Measured data sampled at 50 kHz) 51000 packets of 144 samples from 2018-06-25T06:09:27.996.999.

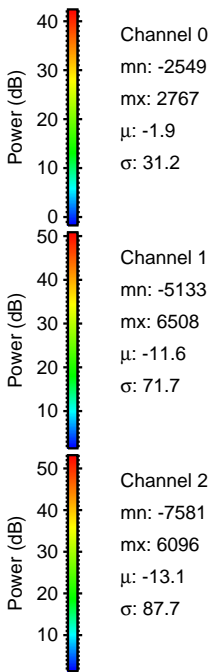
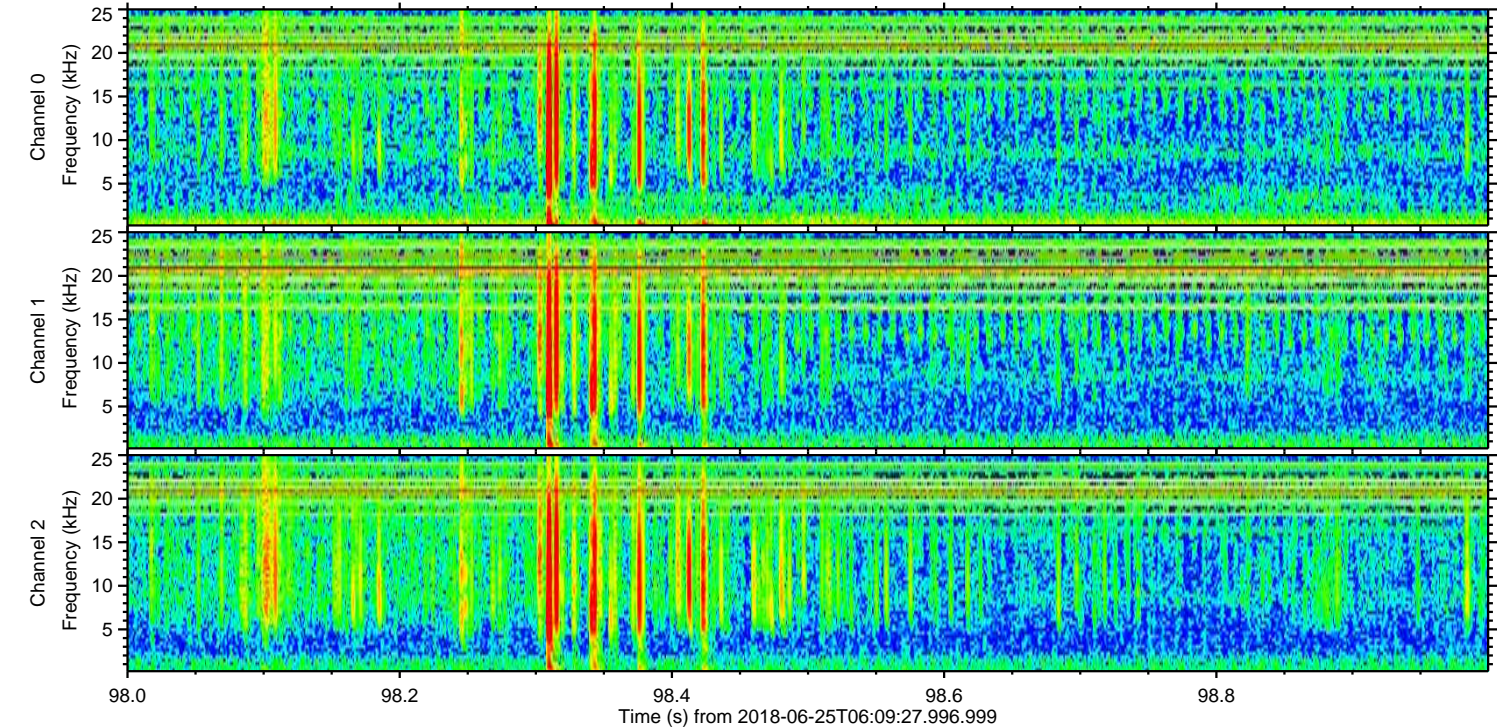
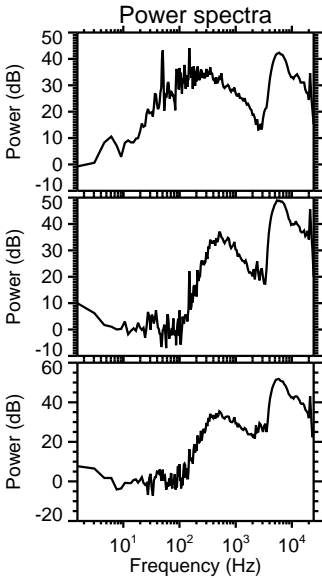
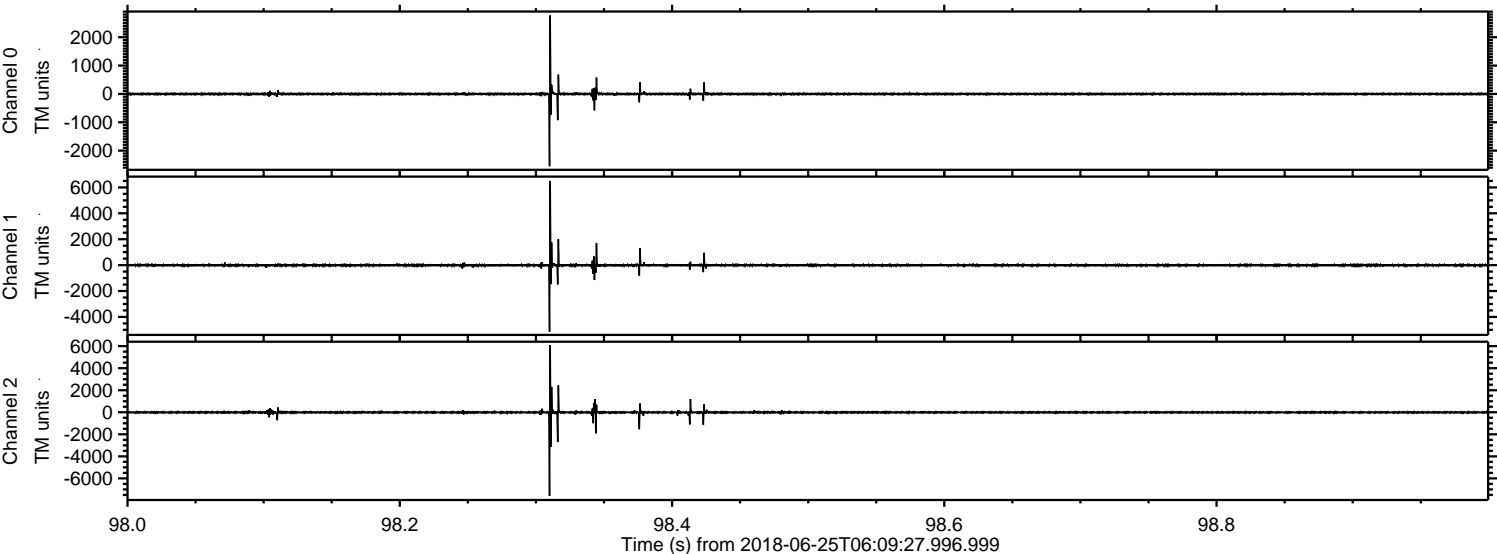
Processed Mon Jun 25 08:17:47 2018 by ELM ver.2012-10-06 from 001__elm20180625_060926__dat00.bin



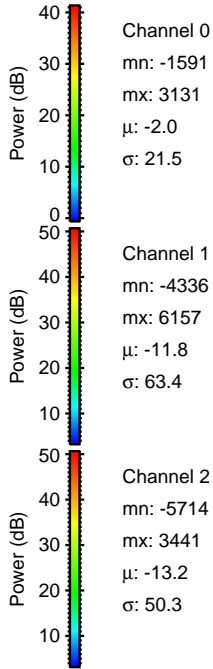
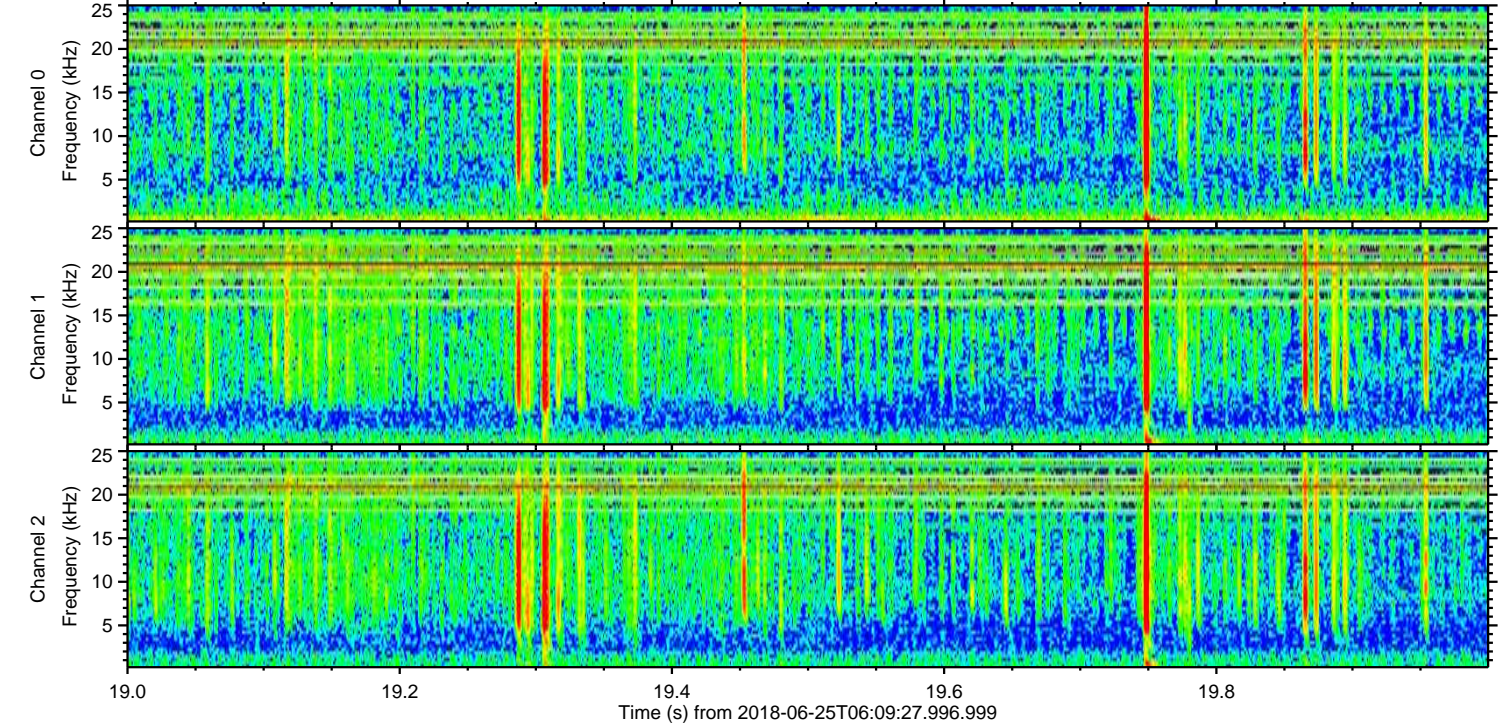
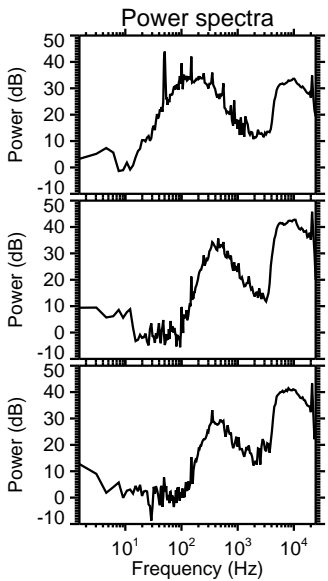
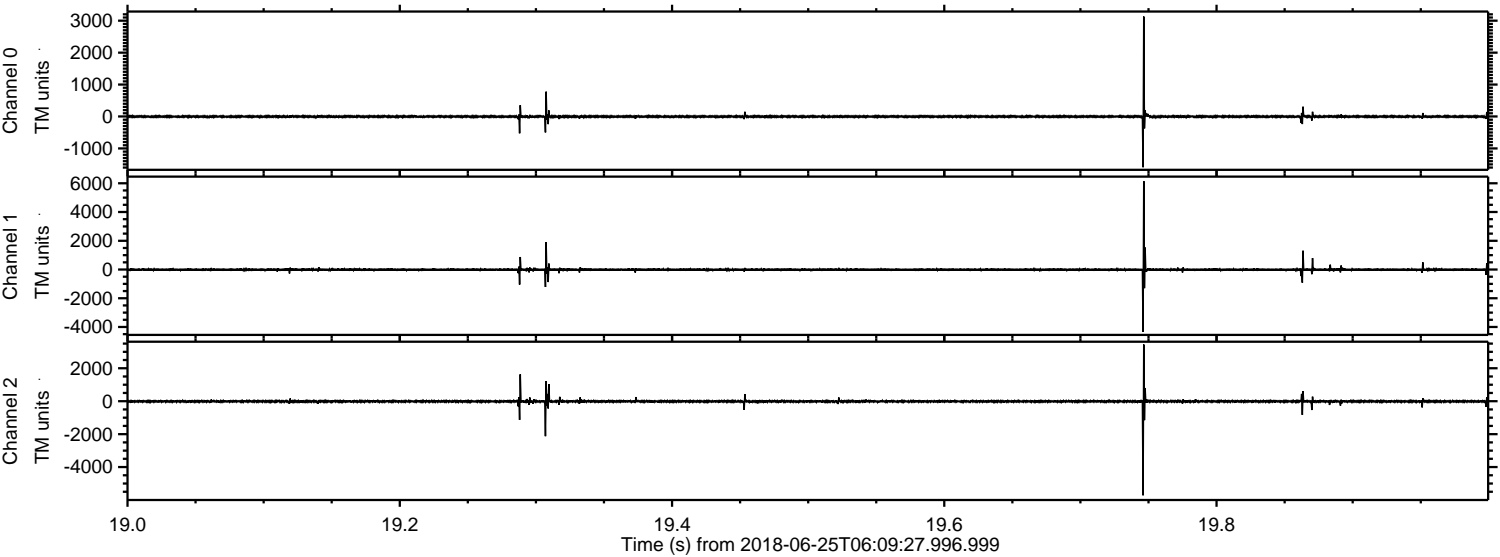
Processed Mon Jun 25 08:17:55 2018 by ELM ver.2012-10-06 from 001__elm20180625_060926__dat00.bin



Processed Mon Jun 25 08:17:56 2018 by ELM ver.2012-10-06 from 001__elm20180625_060926__dat00.bin

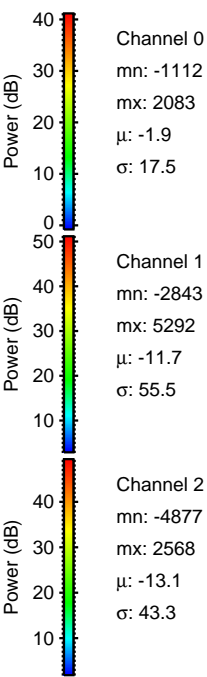
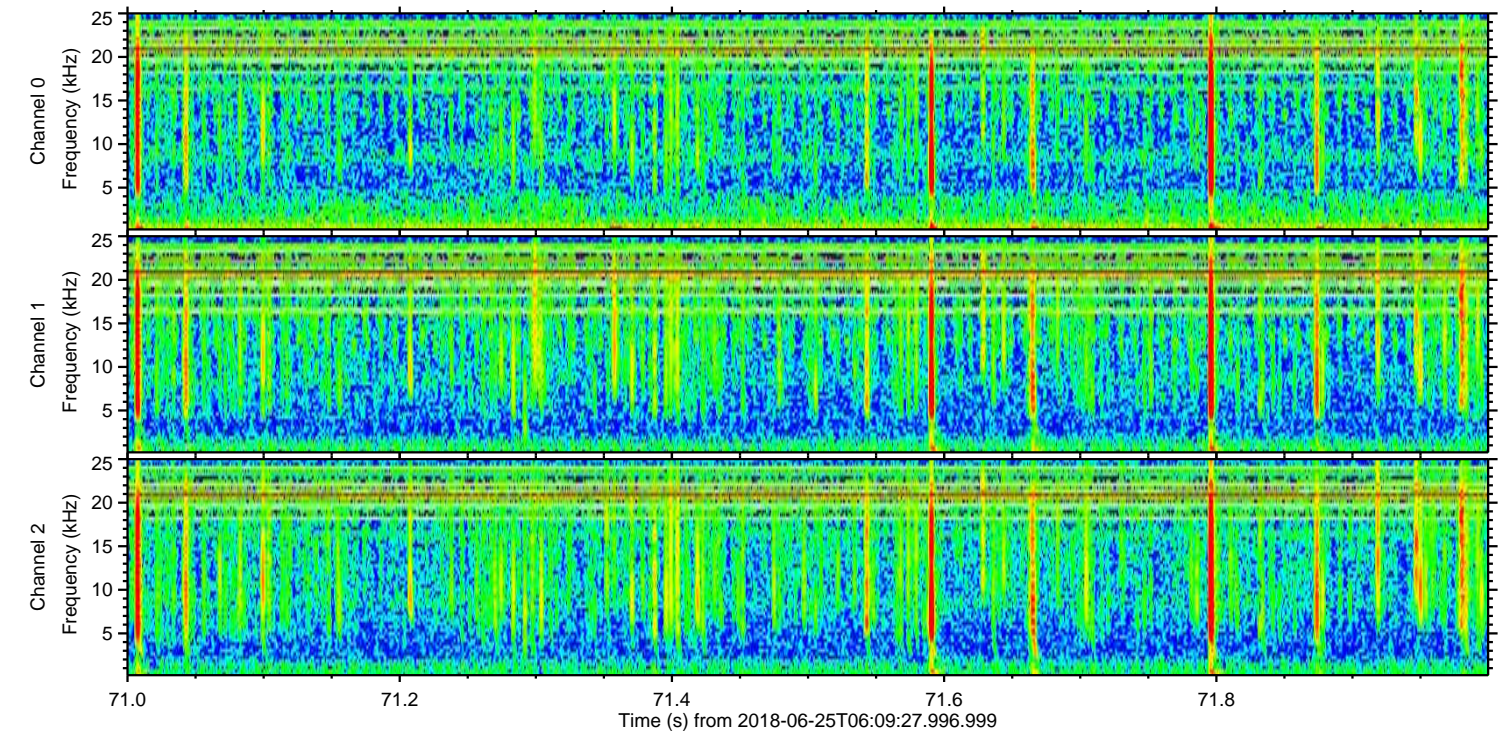
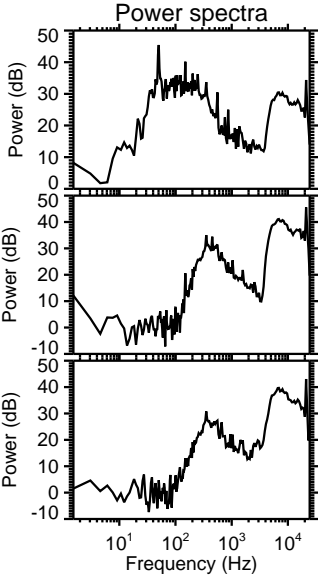
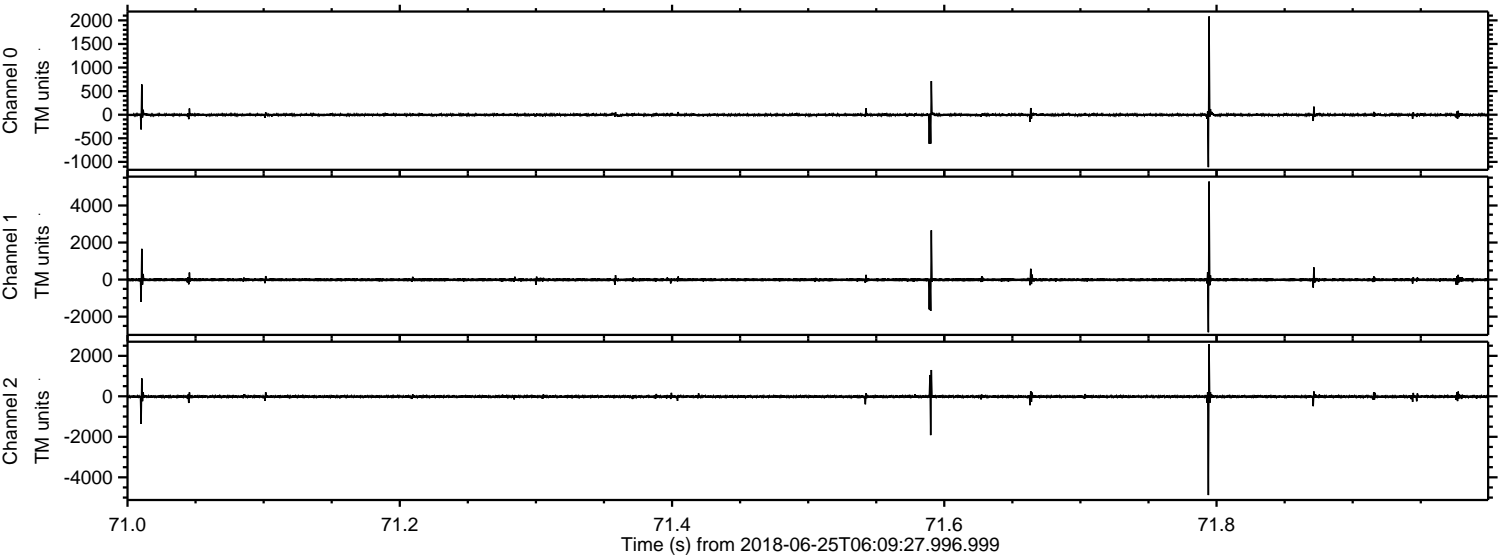


Processed Mon Jun 25 08:17:56 2018 by ELM ver.2012-10-06 from 001__elm20180625_060926__dat00.bin

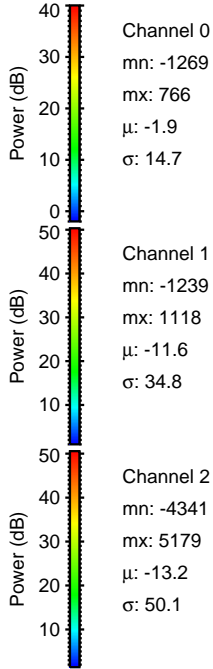
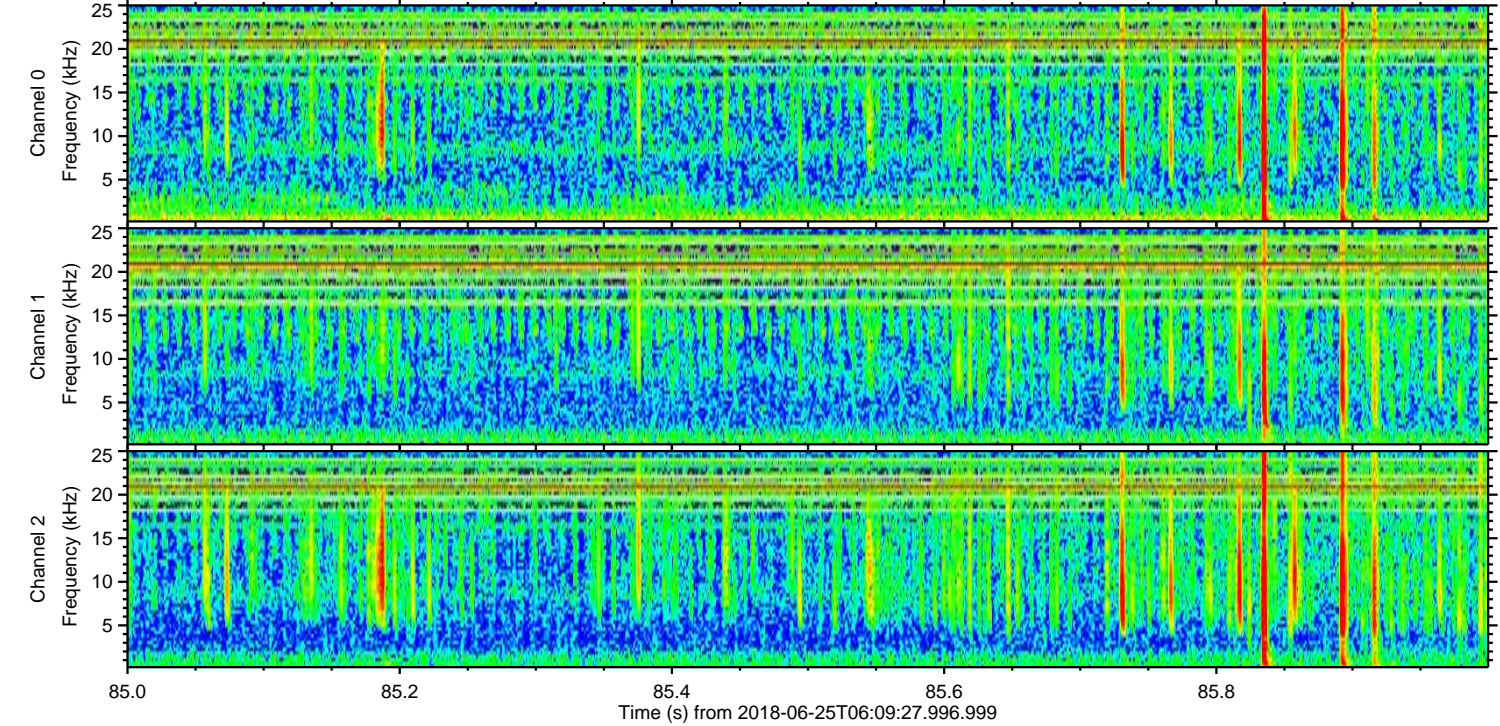
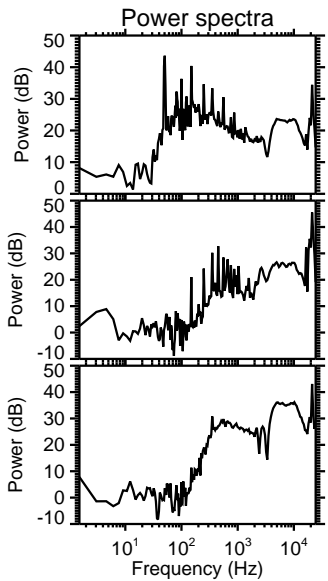
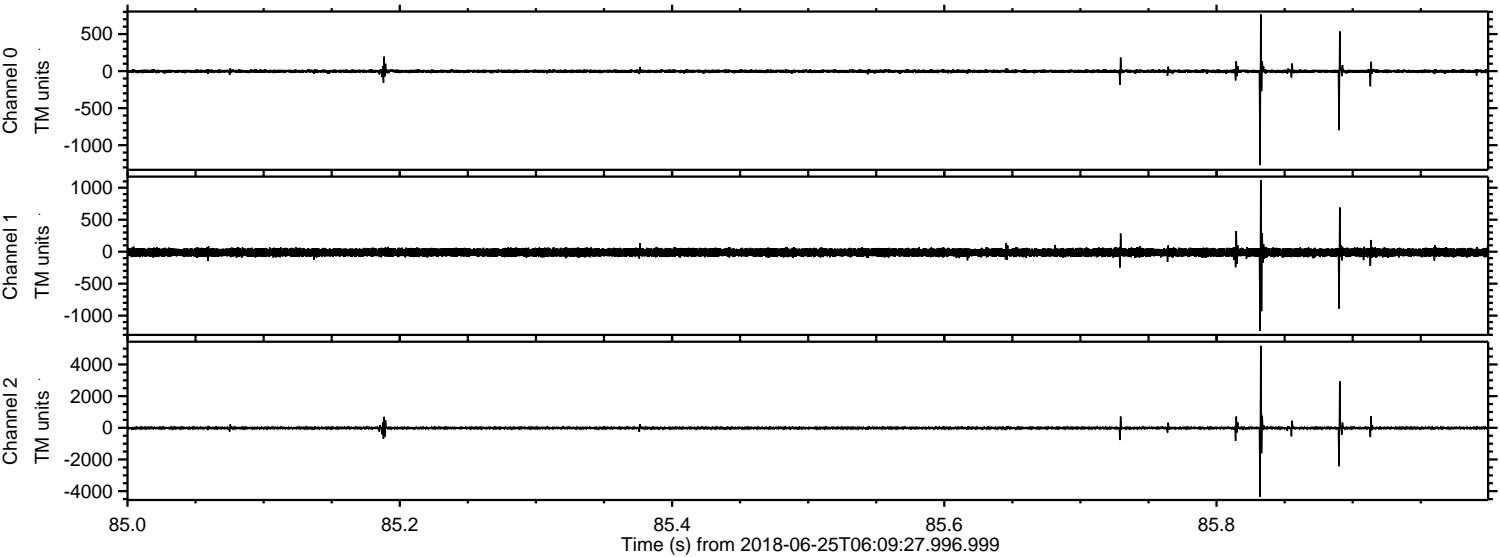


ELMAVAN 3D WAVEFORMS (Measured data sampled at 50 kHz) 51000 packets of 144 samples from 2018-06-25T06:09:27.996.999. Part 72/147

Processed Mon Jun 25 08:17:57 2018 by ELM ver.2012-10-06 from 001__elm20180625_060926__dat00.bin



Processed Mon Jun 25 08:17:58 2018 by ELM ver.2012-10-06 from 001__elm20180625_060926__dat00.bin



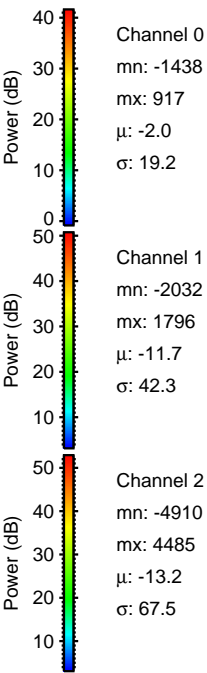
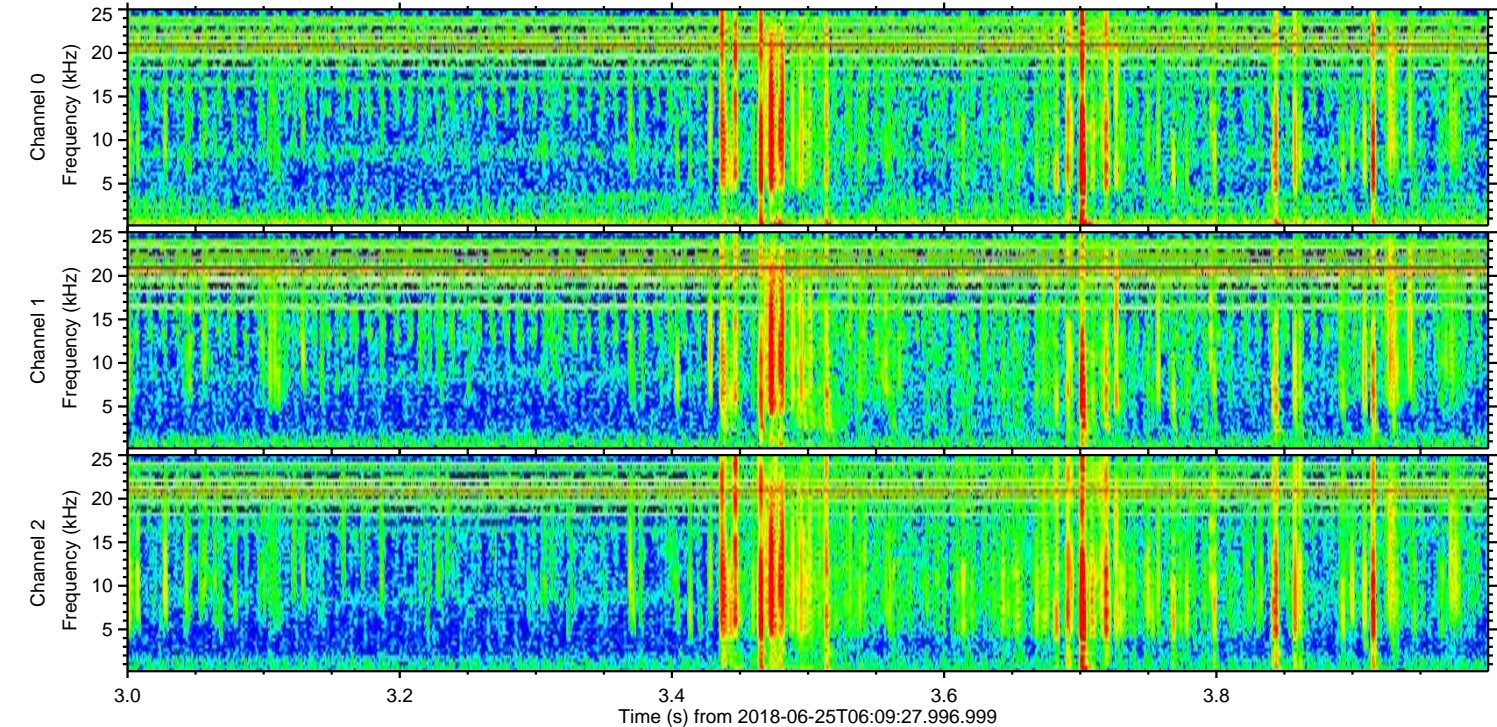
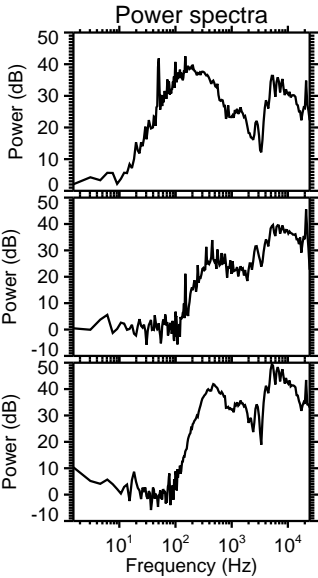
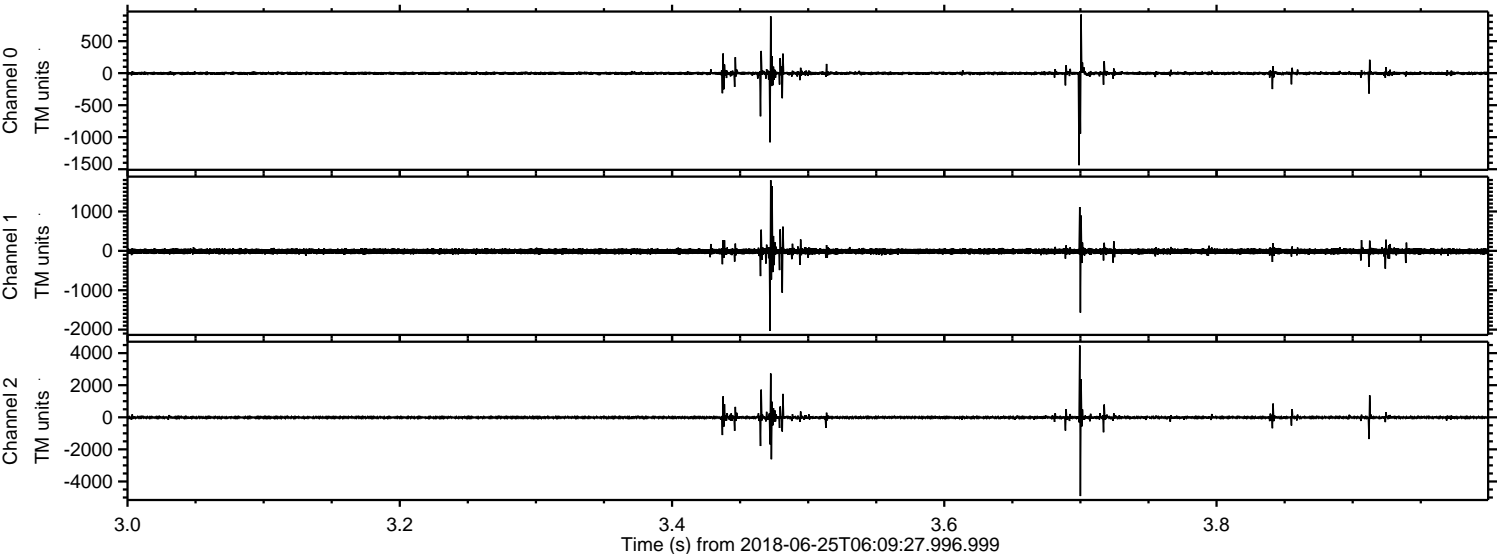
Channel 0
mn: -1269
mx: 766
 μ : -1.9
 σ : 14.7

Channel 1
mn: -1239
mx: 1118
 μ : -11.6
 σ : 34.8

Channel 2
mn: -4341
mx: 5179
 μ : -13.2
 σ : 50.1

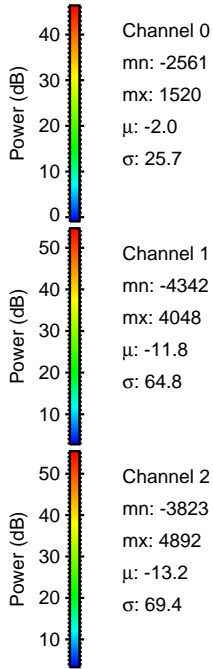
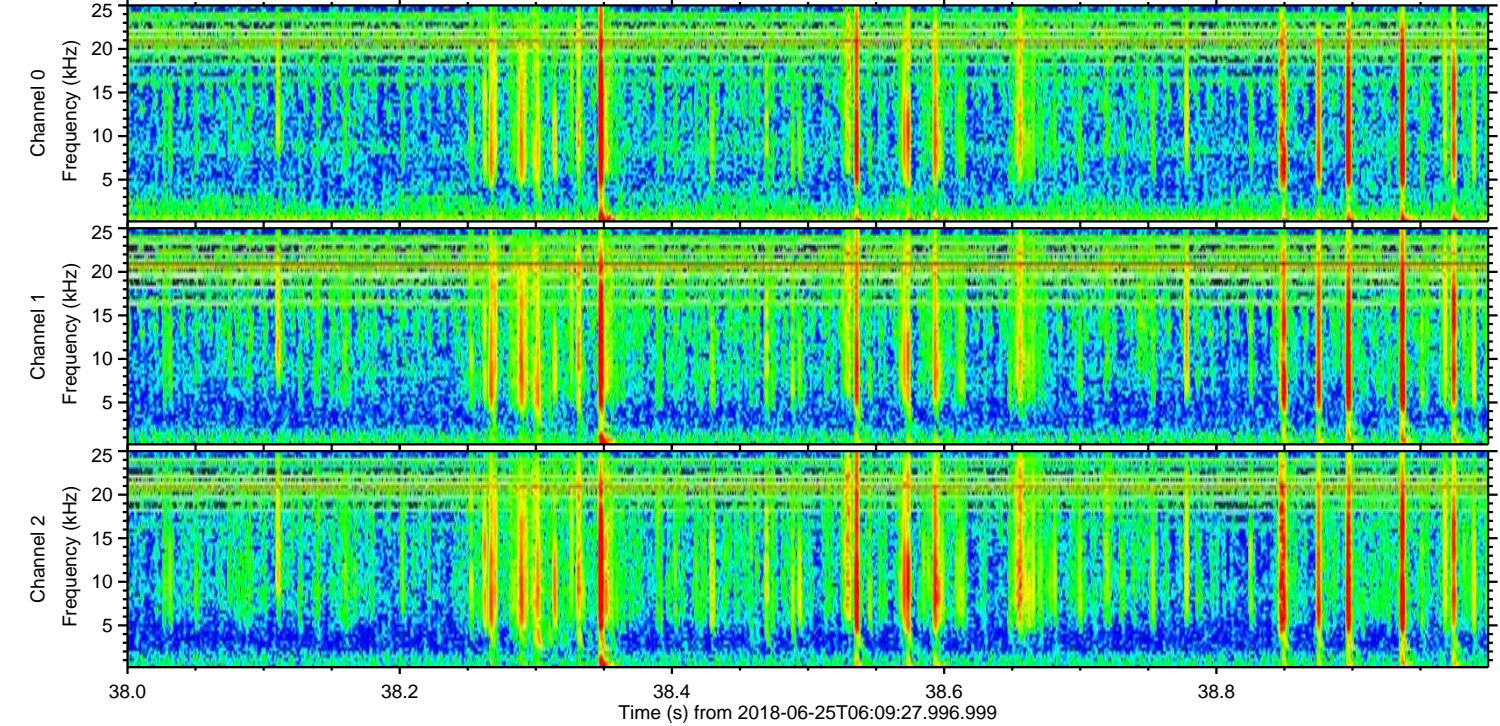
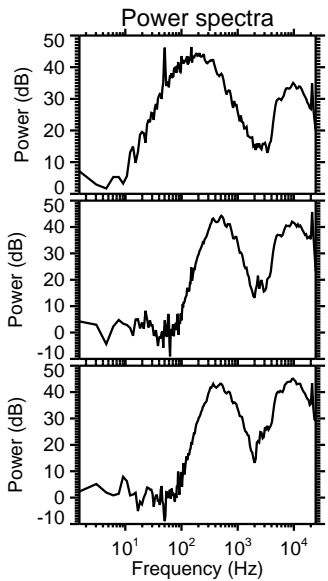
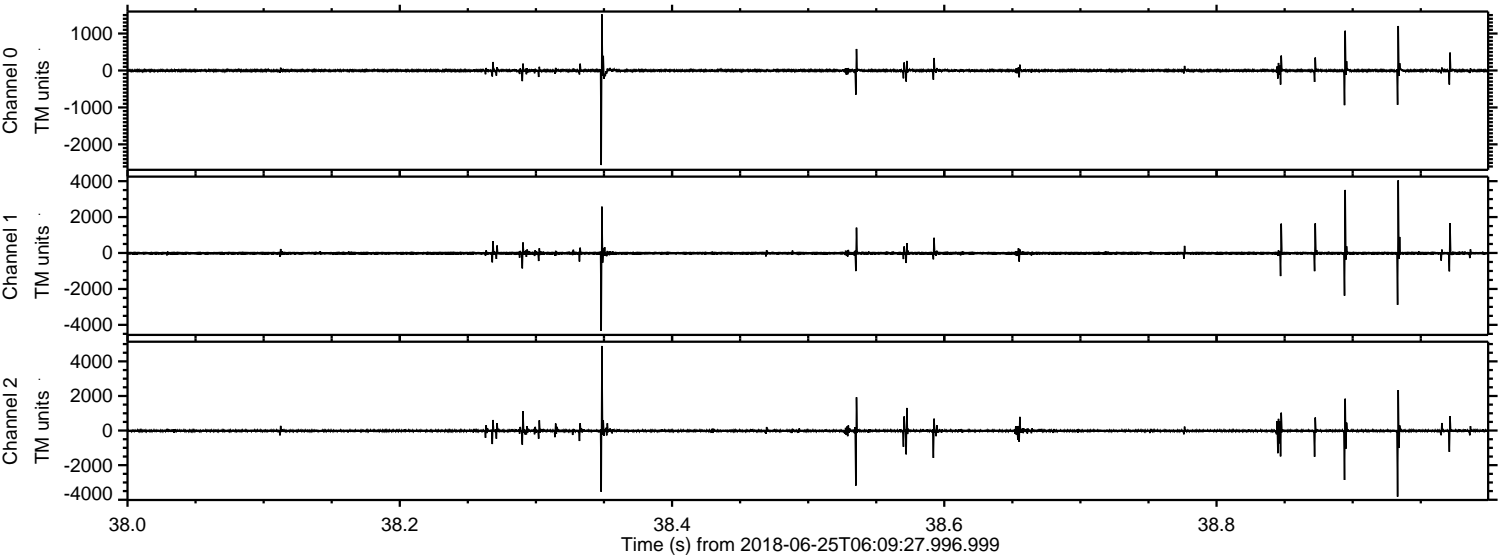
ELMAVAN 3D WAVEFORMS (Measured data sampled at 50 kHz) 51000 packets of 144 samples from 2018-06-25T06:09:27.996.999. Part 4/147

Processed Mon Jun 25 08:17:59 2018 by ELM ver.2012-10-06 from 001__elm20180625_060926__dat00.bin



ELMAVAN 3D WAVEFORMS (Measured data sampled at 50 kHz) 51000 packets of 144 samples from 2018-06-25T06:09:27.996.999. Part 39/147

Processed Mon Jun 25 08:18:00 2018 by ELM ver.2012-10-06 from 001__elm20180625_060926__dat00.bin

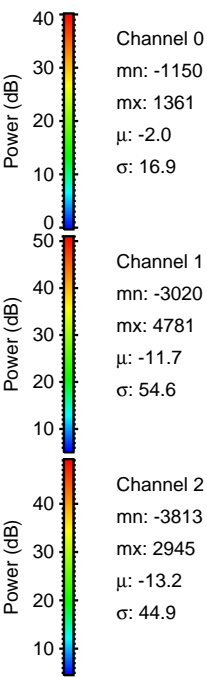
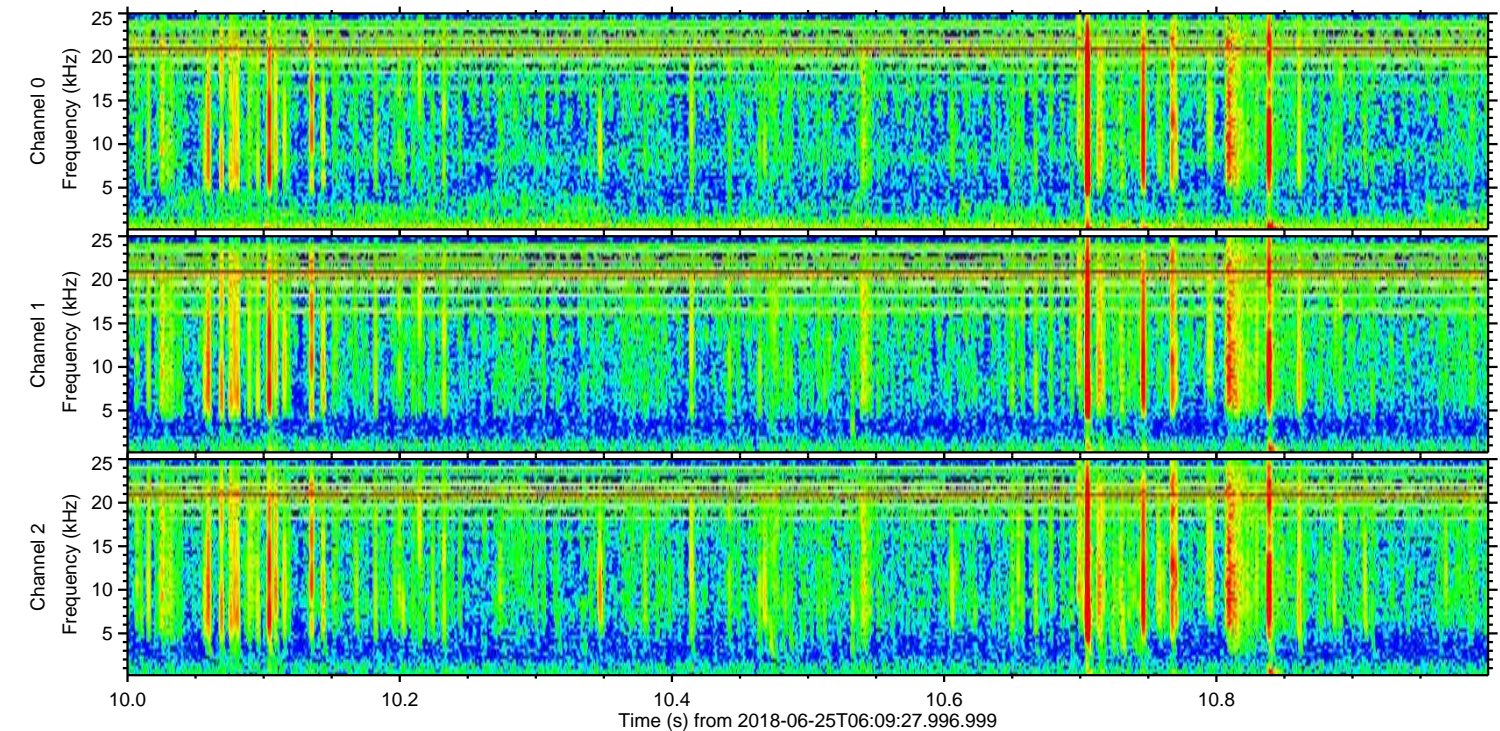
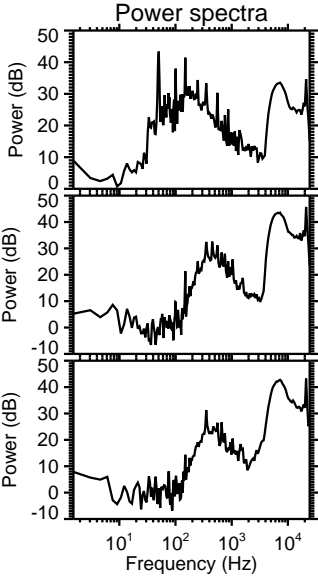
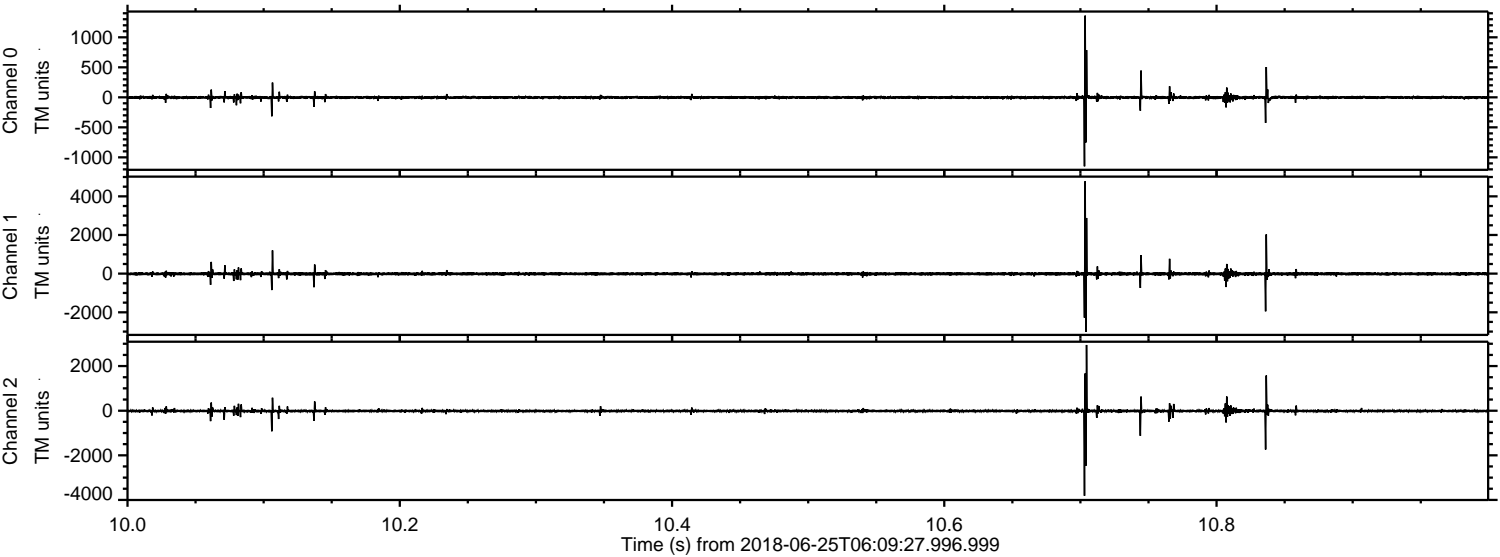


Channel 0
mn: -2561
mx: 1520
 μ : -2.0
 σ : 25.7

Channel 1
mn: -4342
mx: 4048
 μ : -11.8
 σ : 64.8

Channel 2
mn: -3823
mx: 4892
 μ : -13.2
 σ : 69.4

Processed Mon Jun 25 08:18:01 2018 by ELM ver.2012-10-06 from 001__elm20180625_060926__dat00.bin

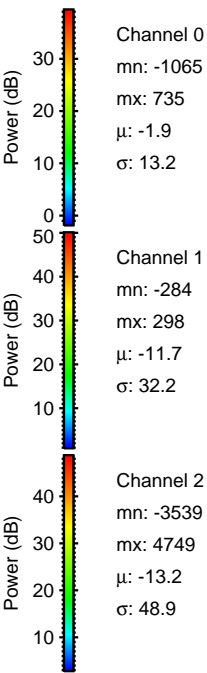
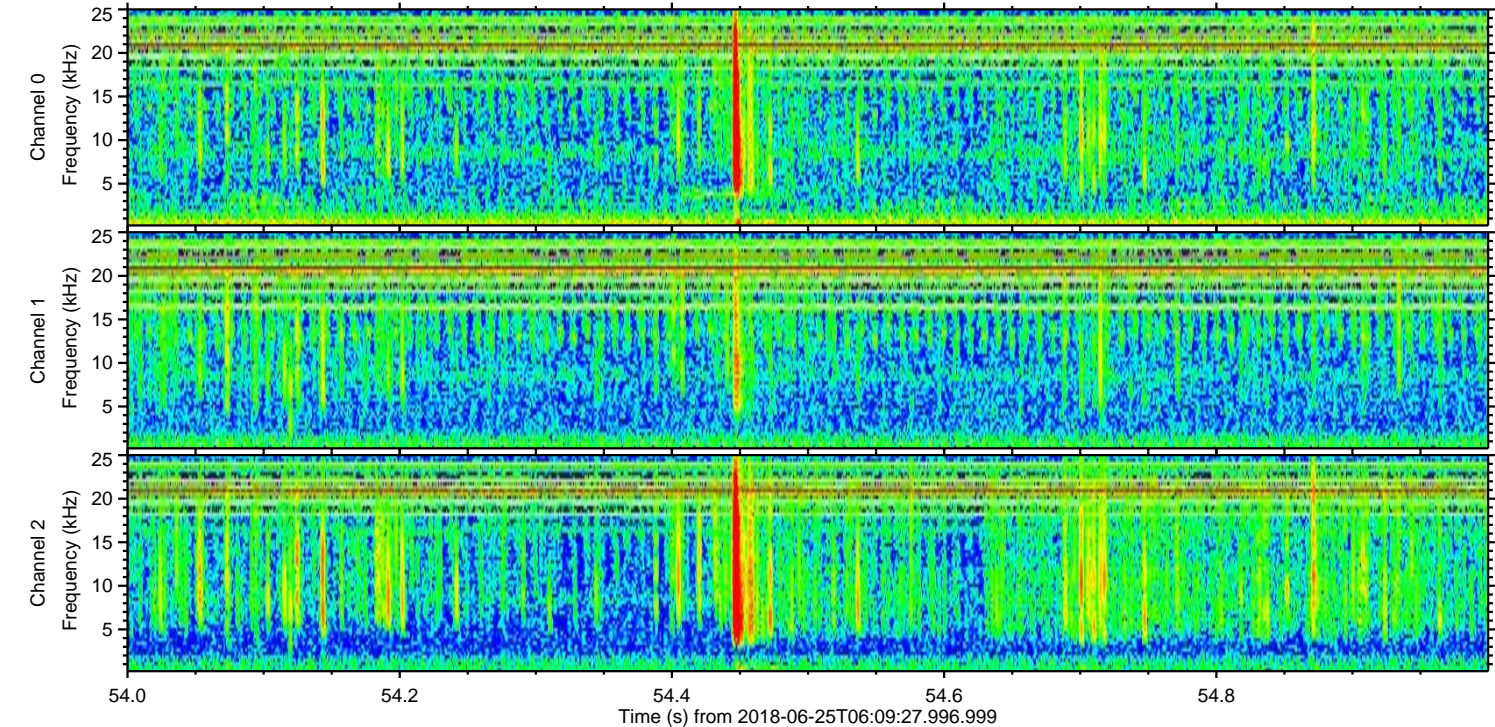
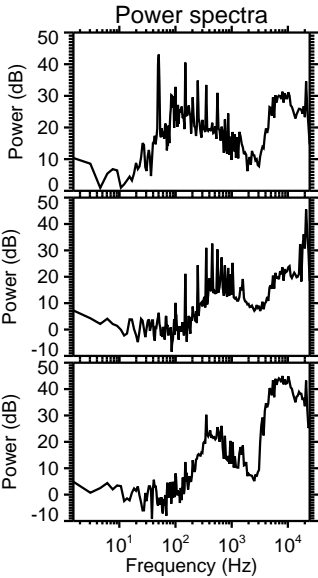
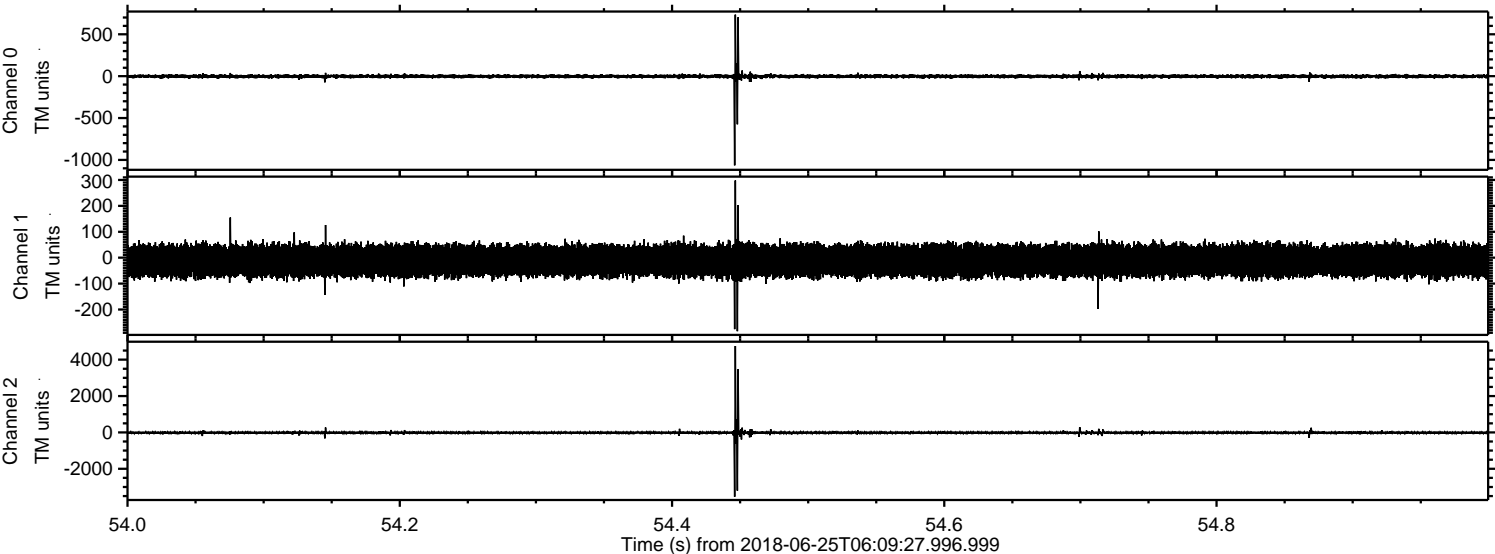


Channel 0
mn: -1150
mx: 1361
 μ : -2.0
 σ : 16.9

Channel 1
mn: -3020
mx: 4781
 μ : -11.7
 σ : 54.6

Channel 2
mn: -3813
mx: 2945
 μ : -13.2
 σ : 44.9

Processed Mon Jun 25 08:18:02 2018 by ELM ver.2012-10-06 from 001__elm20180625_060926__dat00.bin



Processed Mon Jun 25 08:18:02 2018 by ELM ver.2012-10-06 from 001__elm20180625_060926__dat00.bin

