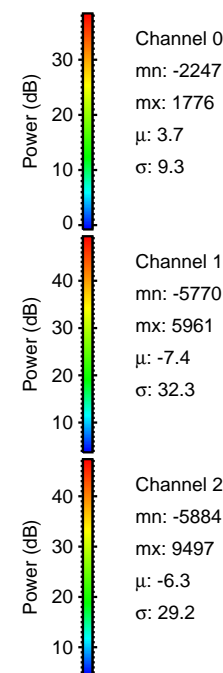
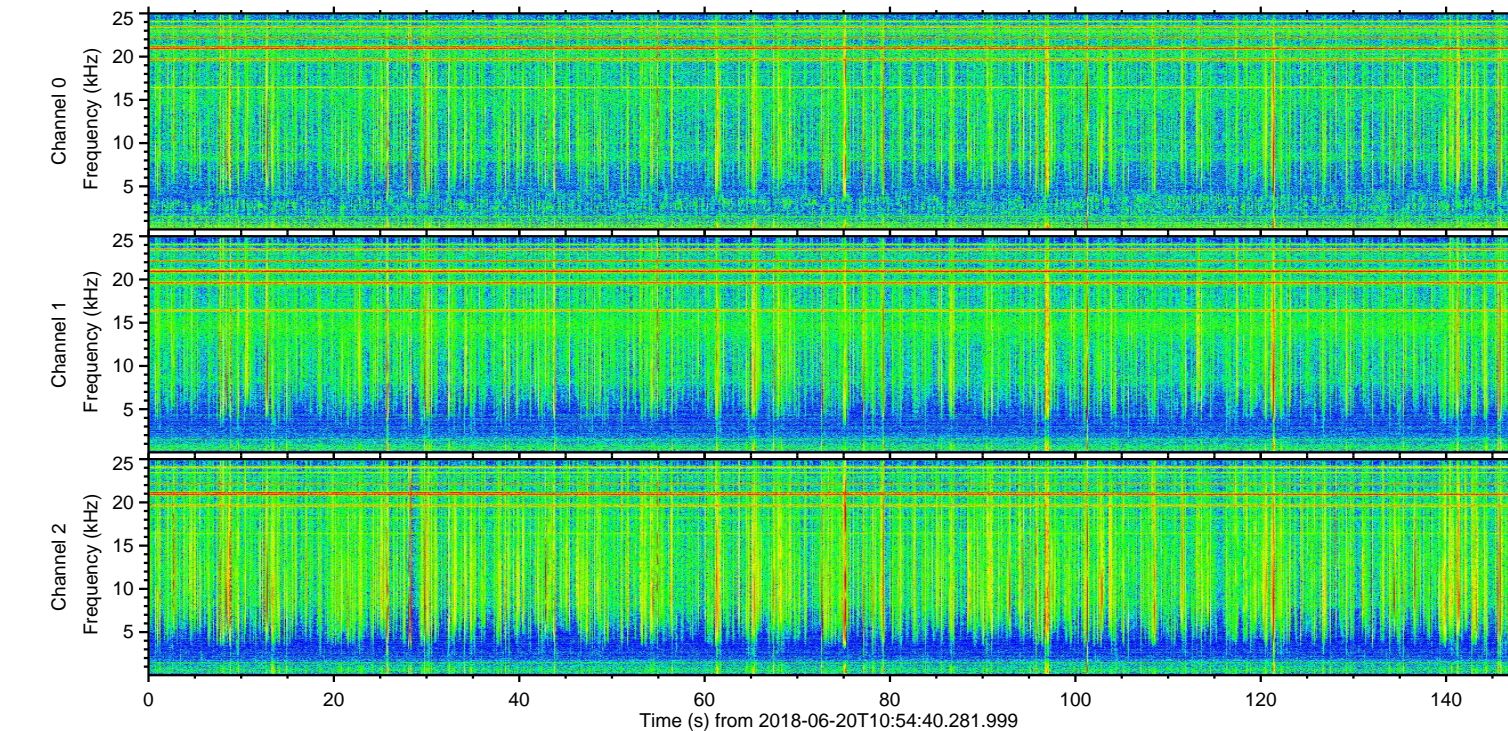
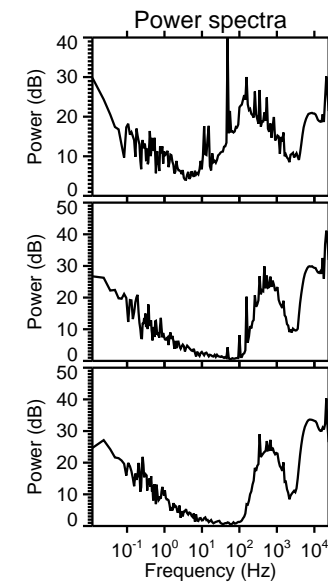
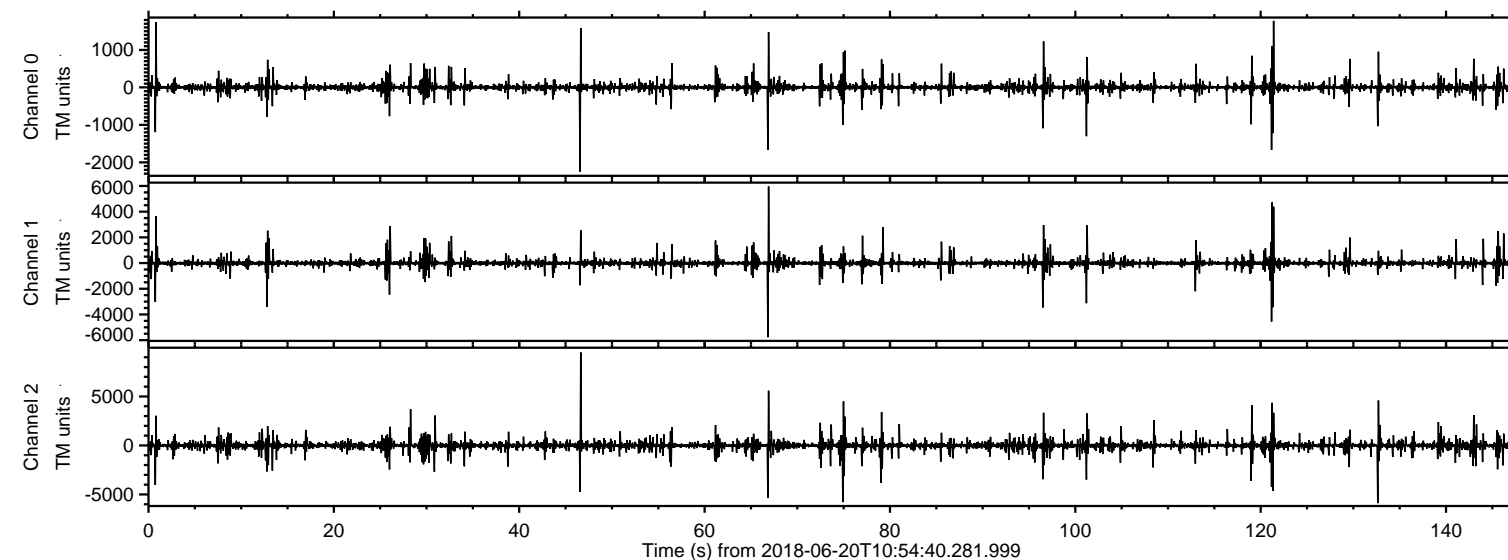


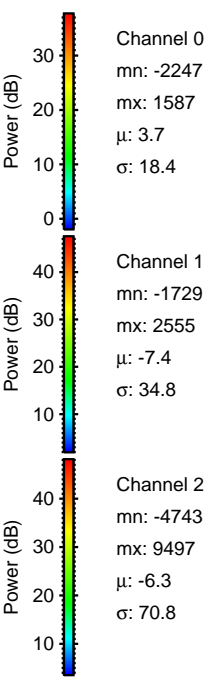
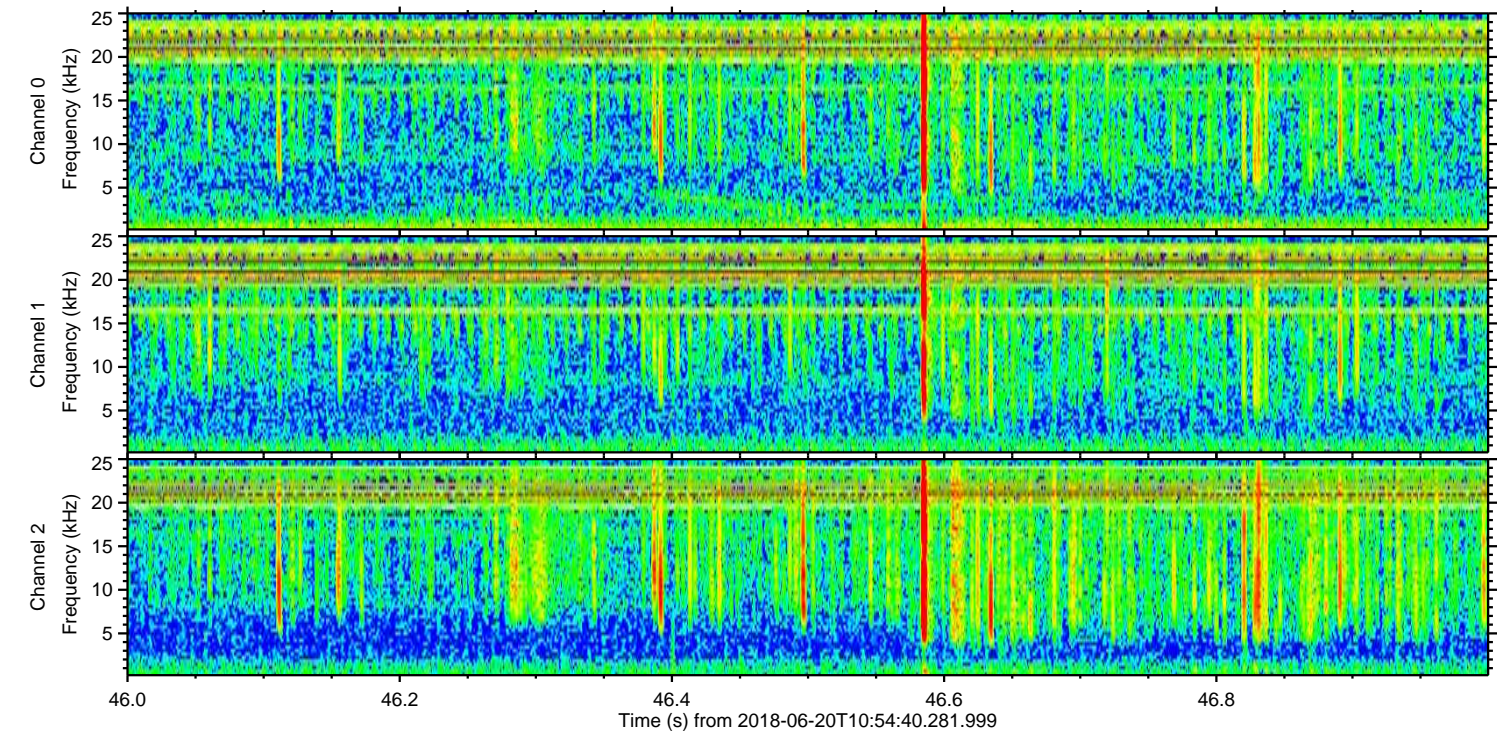
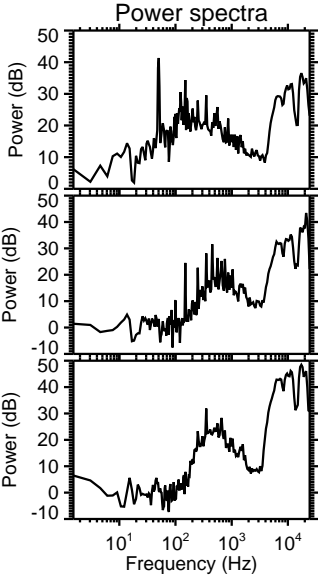
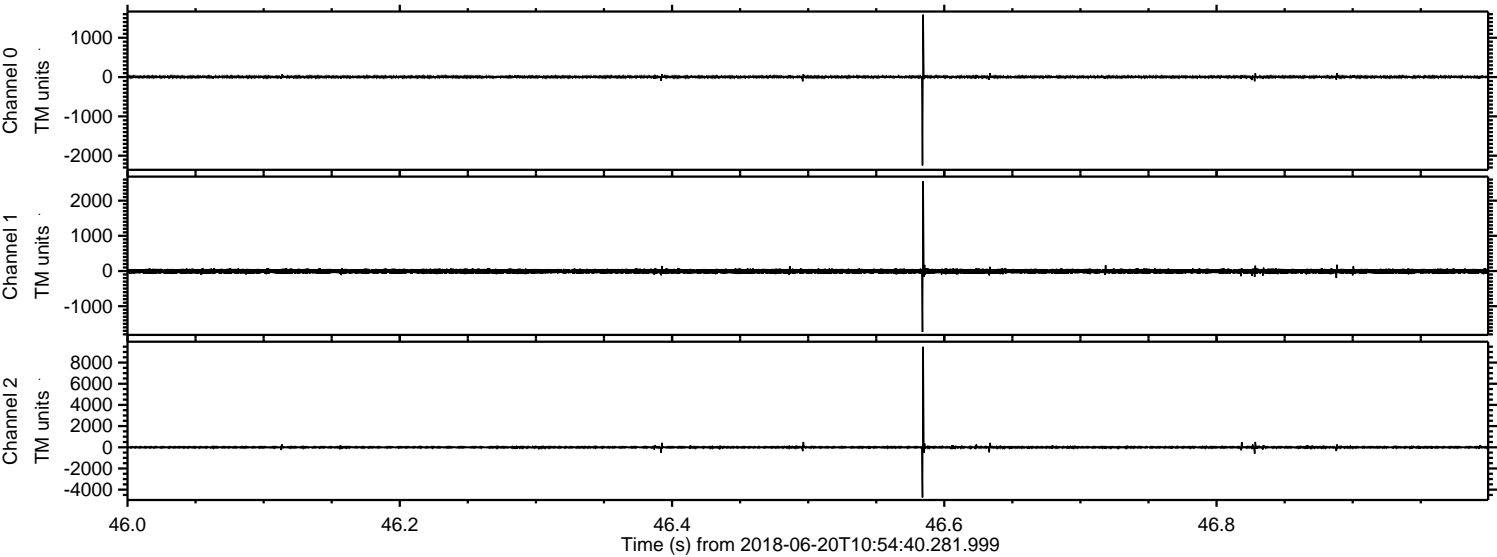
# ELMAVAN 3D WAVEFORMS (Measured data sampled at 50 kHz) 51000 packets of 144 samples from 2018-06-20T10:54:40.281.999.

Processed Wed Jun 20 13:02:15 2018 by ELM ver.2012-10-06 from 001\_\_elm20180620\_105439\_\_dat00.bin



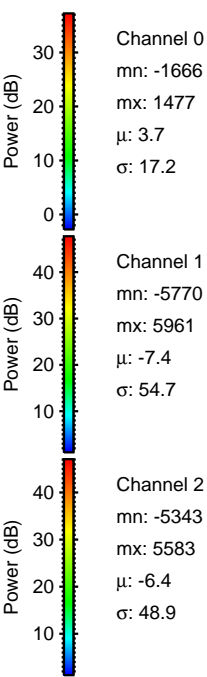
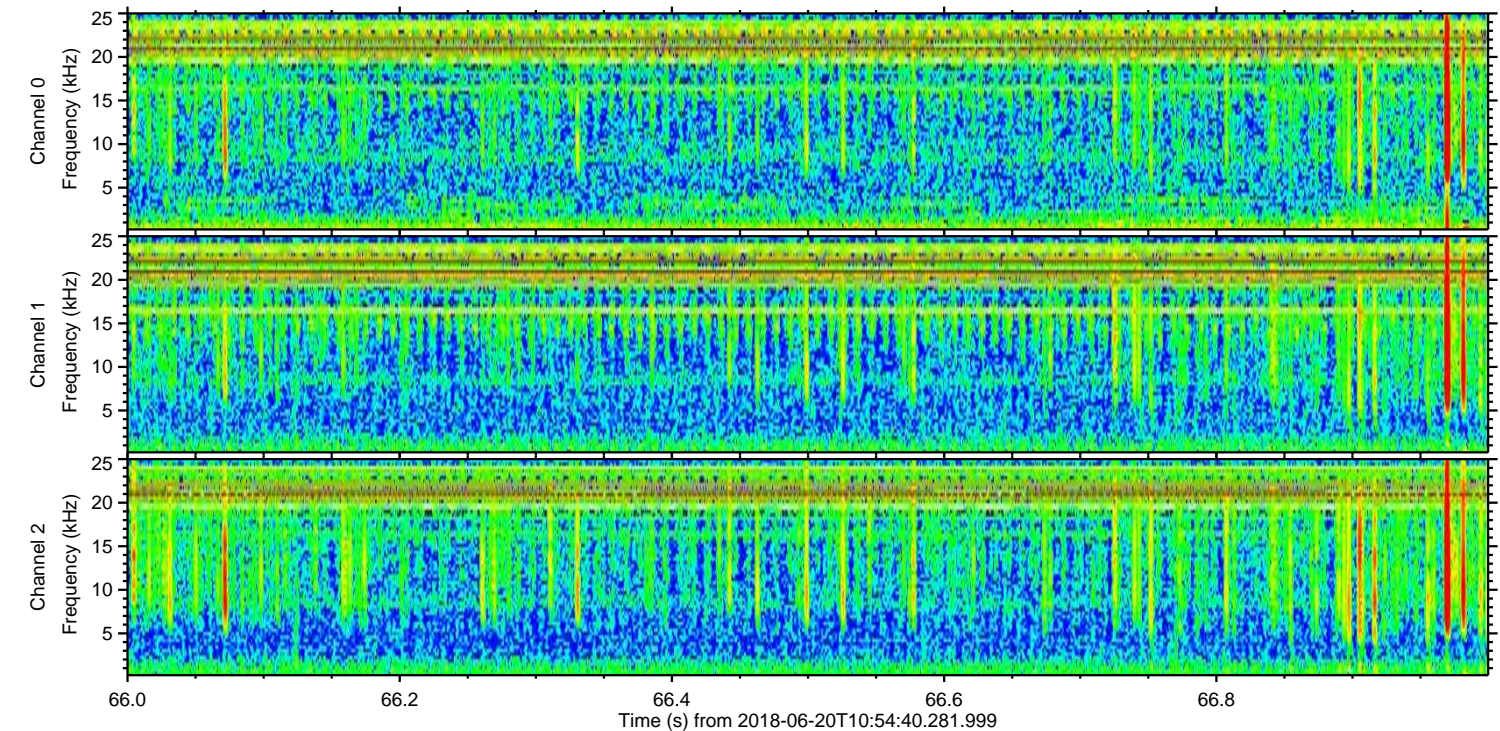
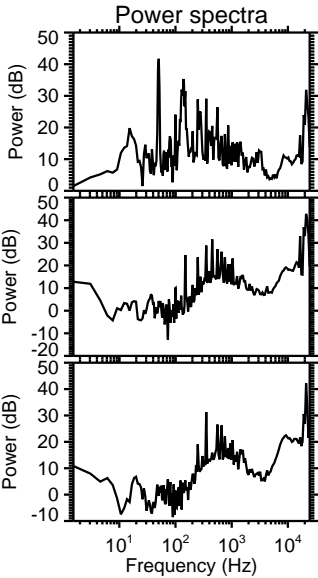
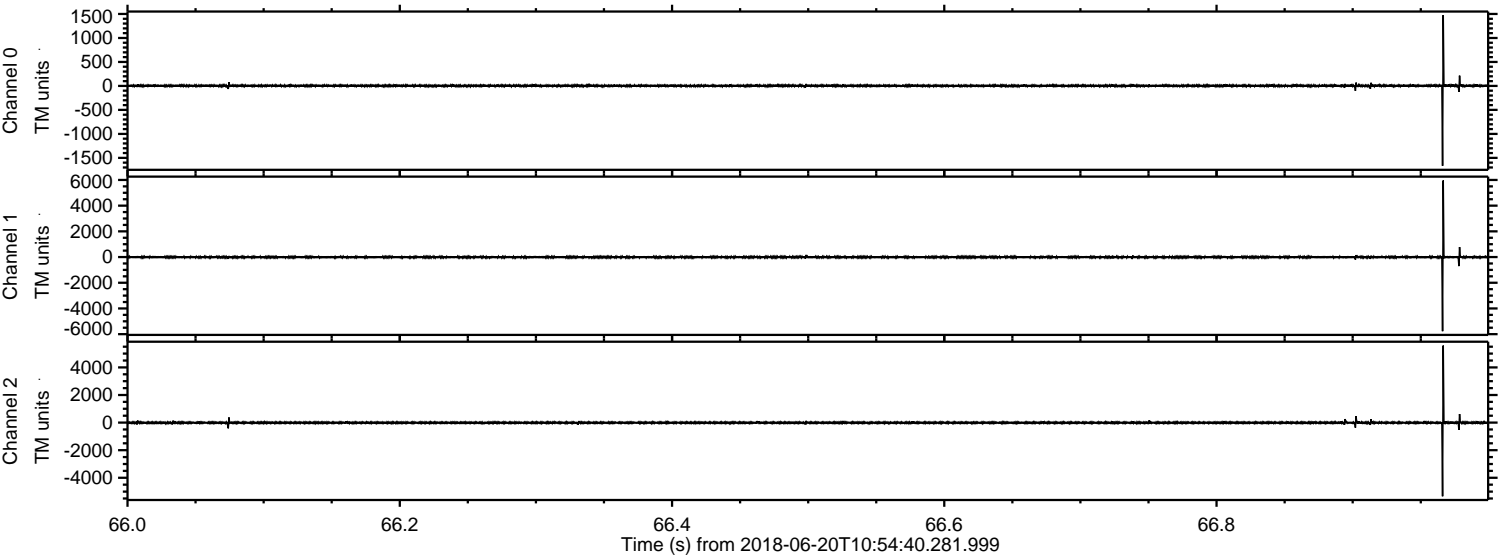


Processed Wed Jun 20 13:02:21 2018 by ELM ver.2012-10-06 from 001\_\_elm20180620\_105439\_\_dat00.bin





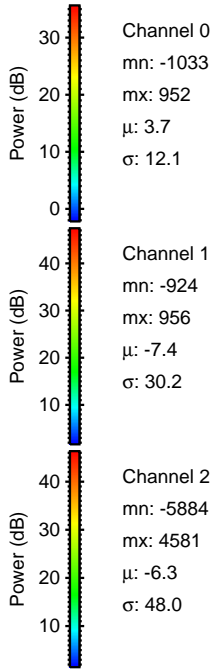
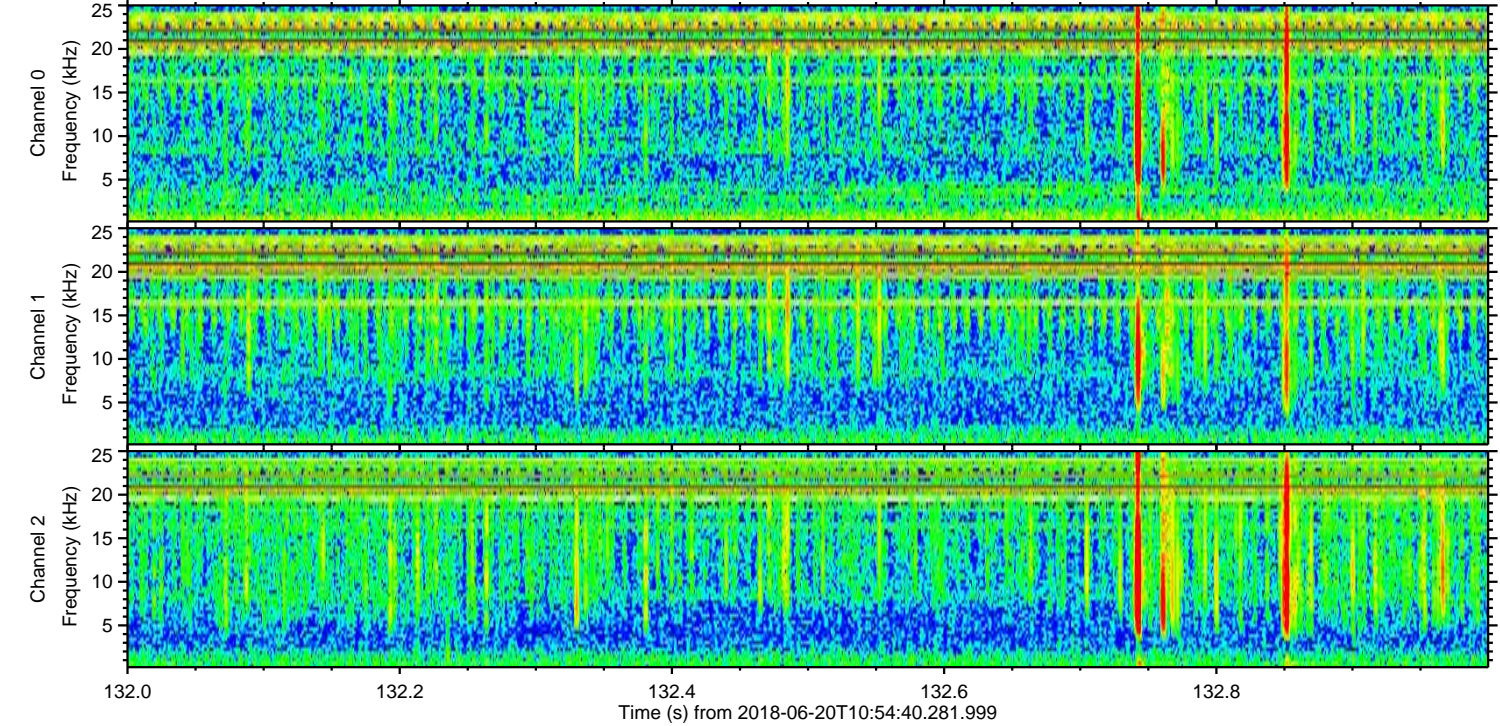
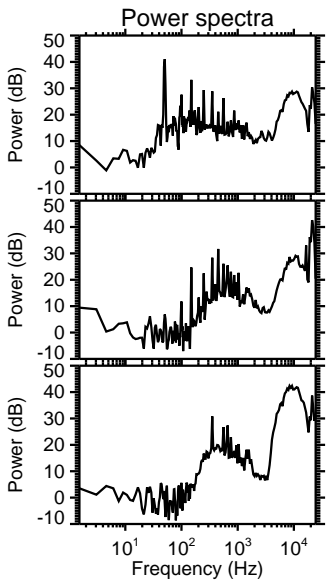
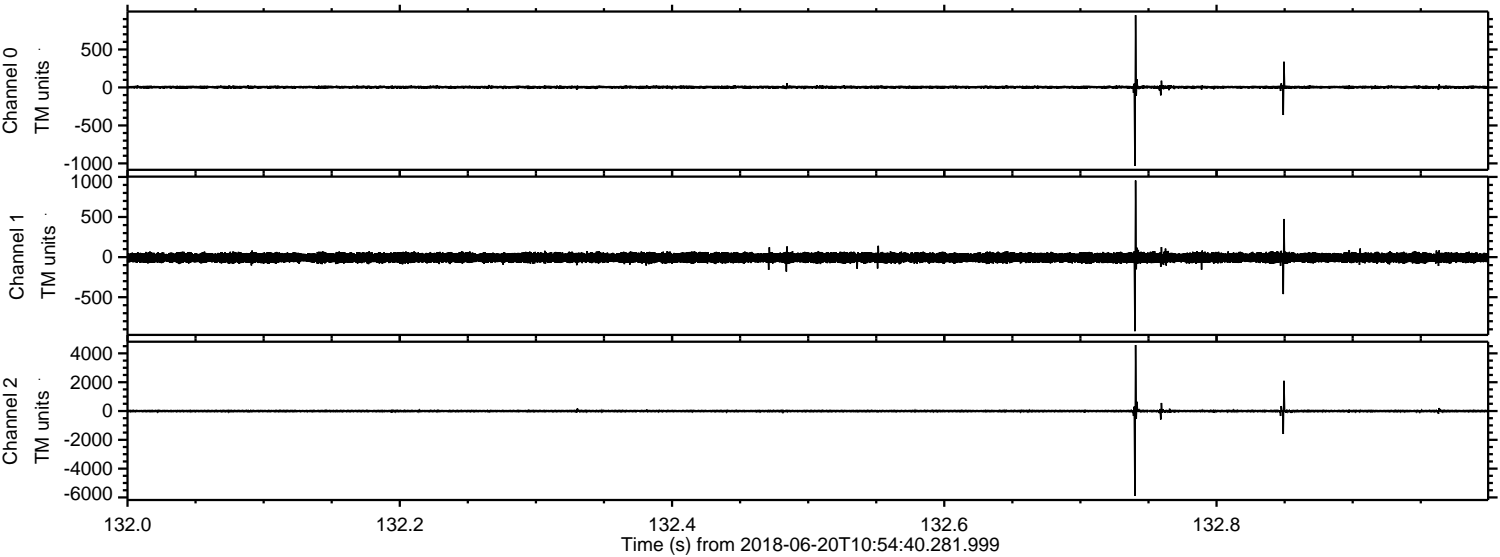
Processed Wed Jun 20 13:02:22 2018 by ELM ver.2012-10-06 from 001\_\_elm20180620\_105439\_\_dat00.bin





ELMAVAN 3D WAVEFORMS (Measured data sampled at 50 kHz) 51000 packets of 144 samples from 2018-06-20T10:54:40.281.999. Part 133/147

Processed Wed Jun 20 13:02:22 2018 by ELM ver.2012-10-06 from 001\_\_elm20180620\_105439\_\_dat00.bin



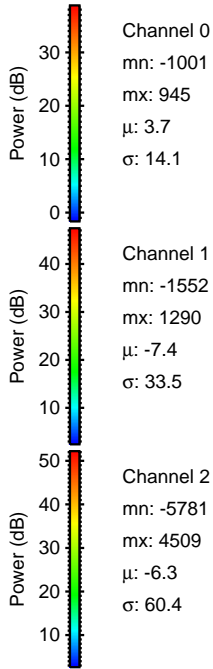
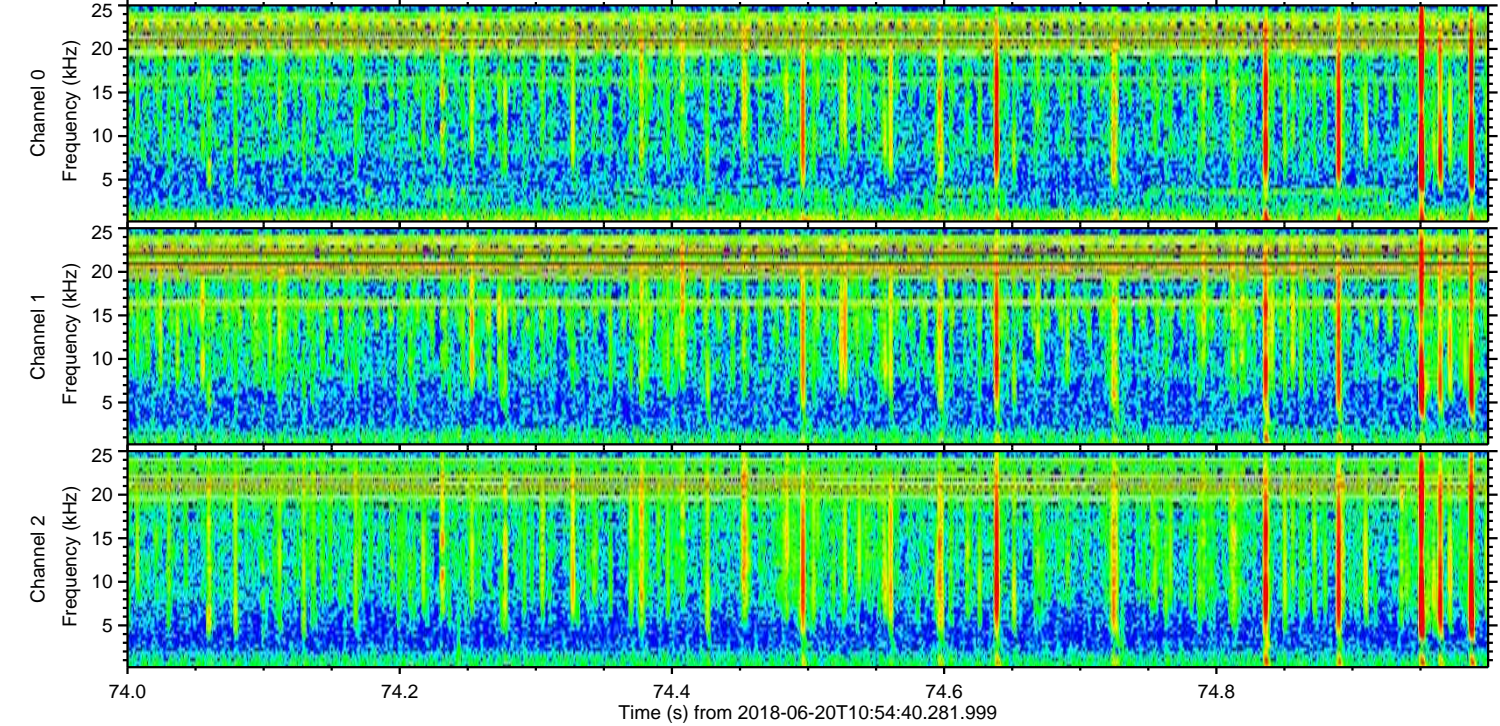
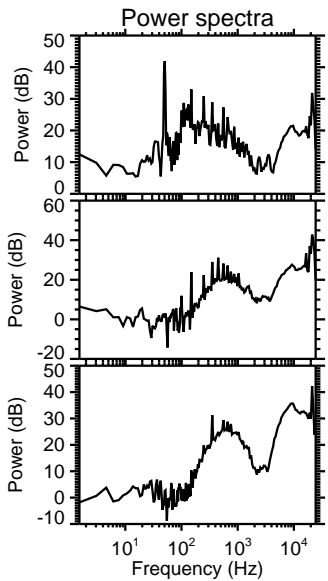
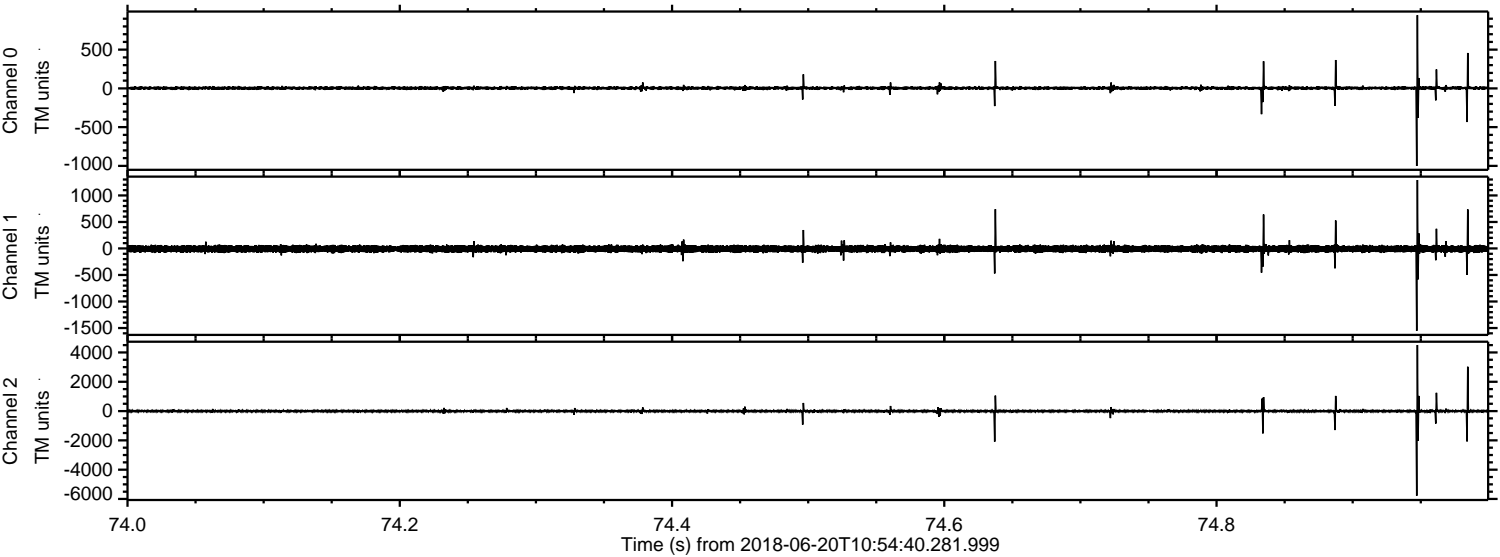
Channel 0  
mn: -1033  
mx: 952  
 $\mu$ : 3.7  
 $\sigma$ : 12.1

Channel 1  
mn: -924  
mx: 956  
 $\mu$ : -7.4  
 $\sigma$ : 30.2

Channel 2  
mn: -5884  
mx: 4581  
 $\mu$ : -6.3  
 $\sigma$ : 48.0



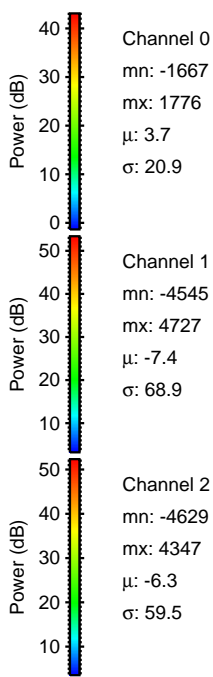
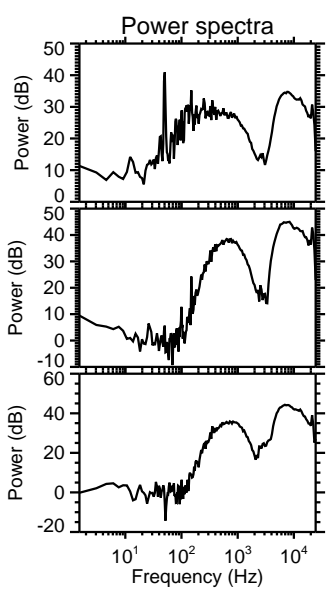
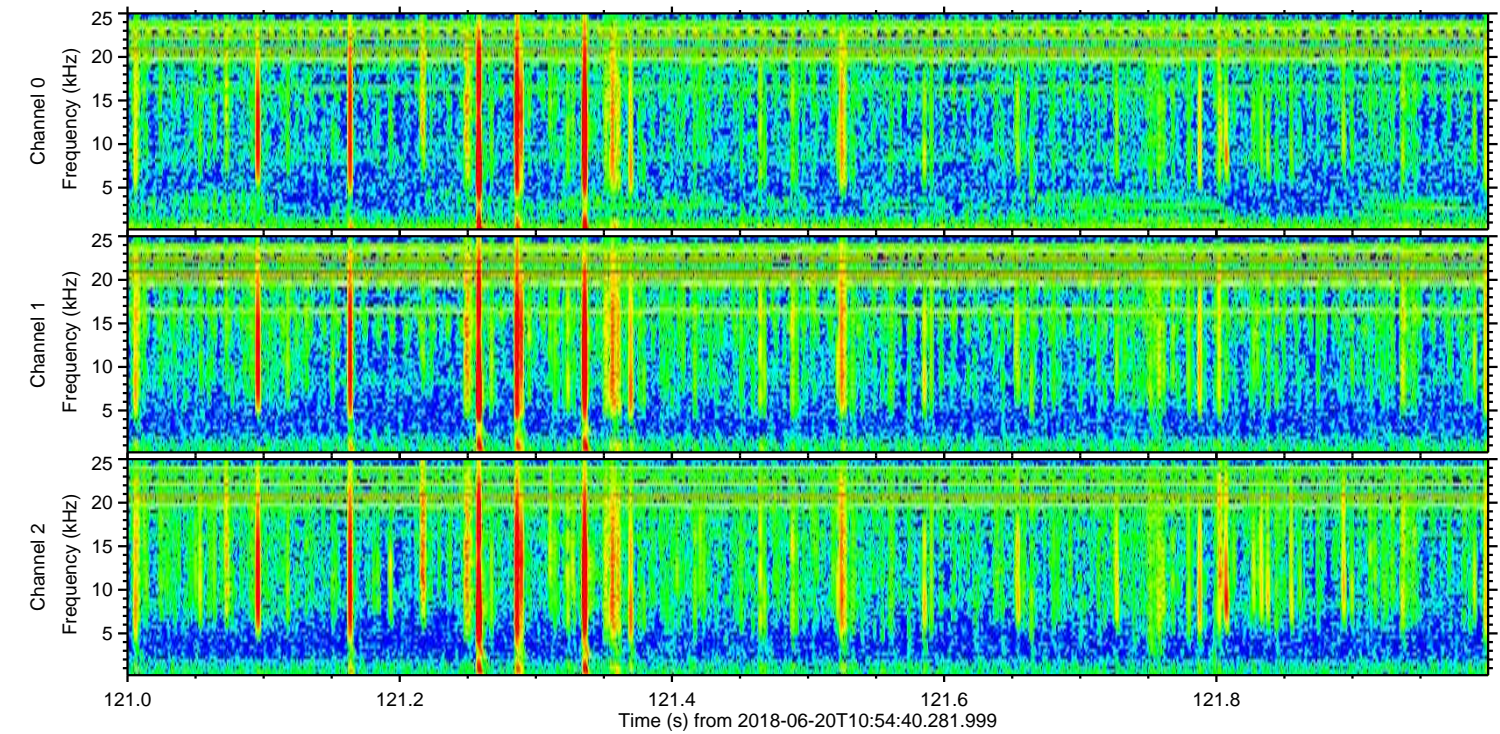
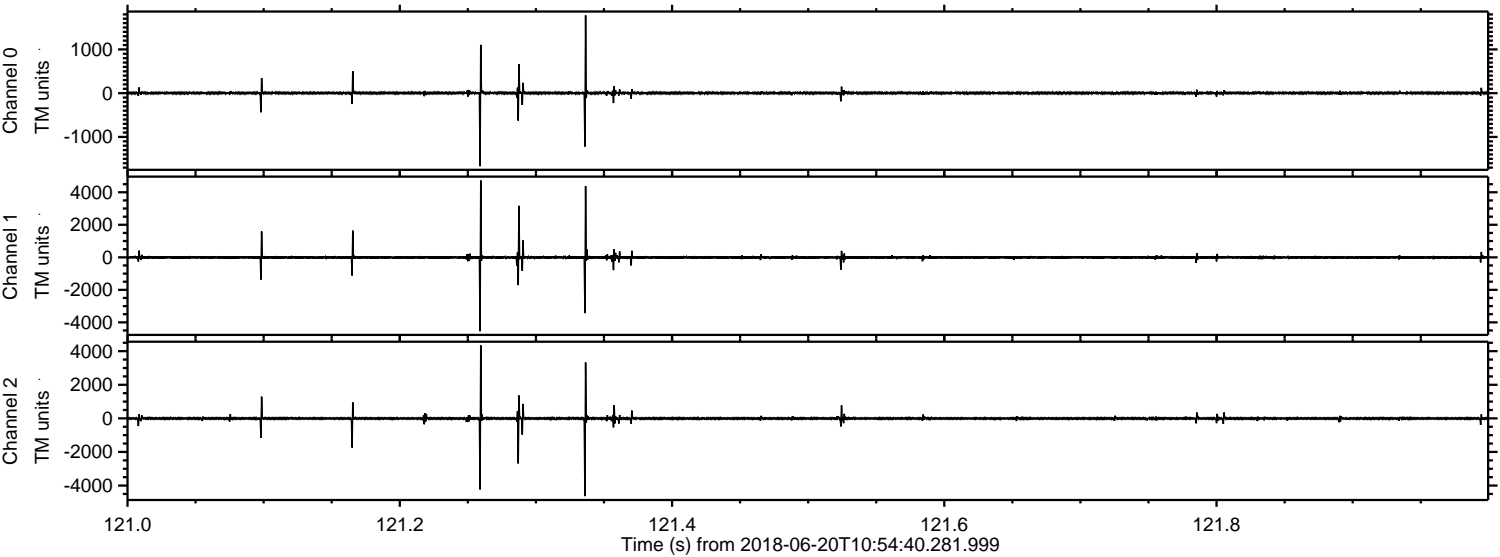
Processed Wed Jun 20 13:02:23 2018 by ELM ver.2012-10-06 from 001\_\_elm20180620\_105439\_\_dat00.bin





ELMAVAN 3D WAVEFORMS (Measured data sampled at 50 kHz) 51000 packets of 144 samples from 2018-06-20T10:54:40.281.999. Part 122/147

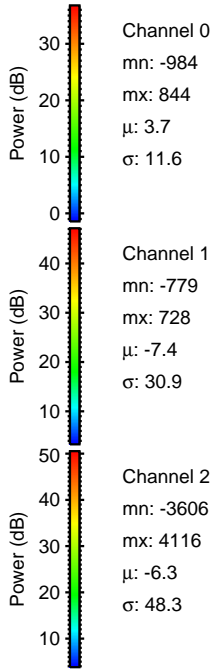
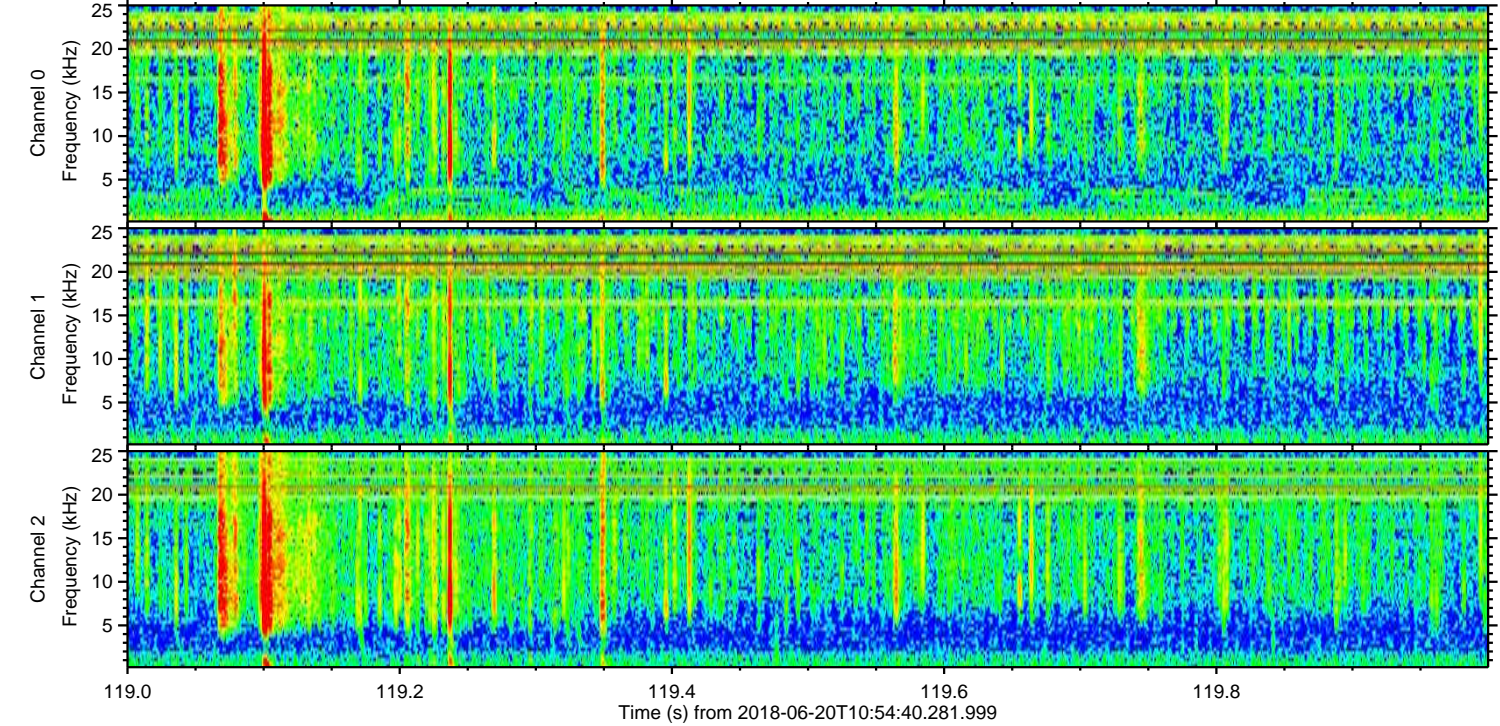
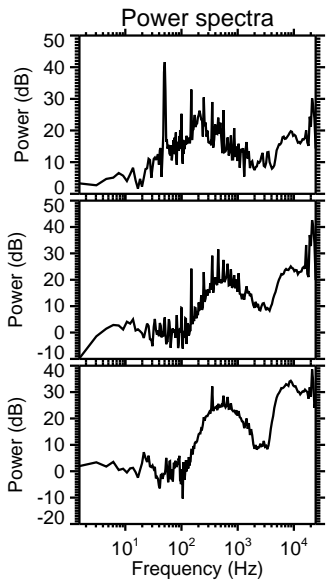
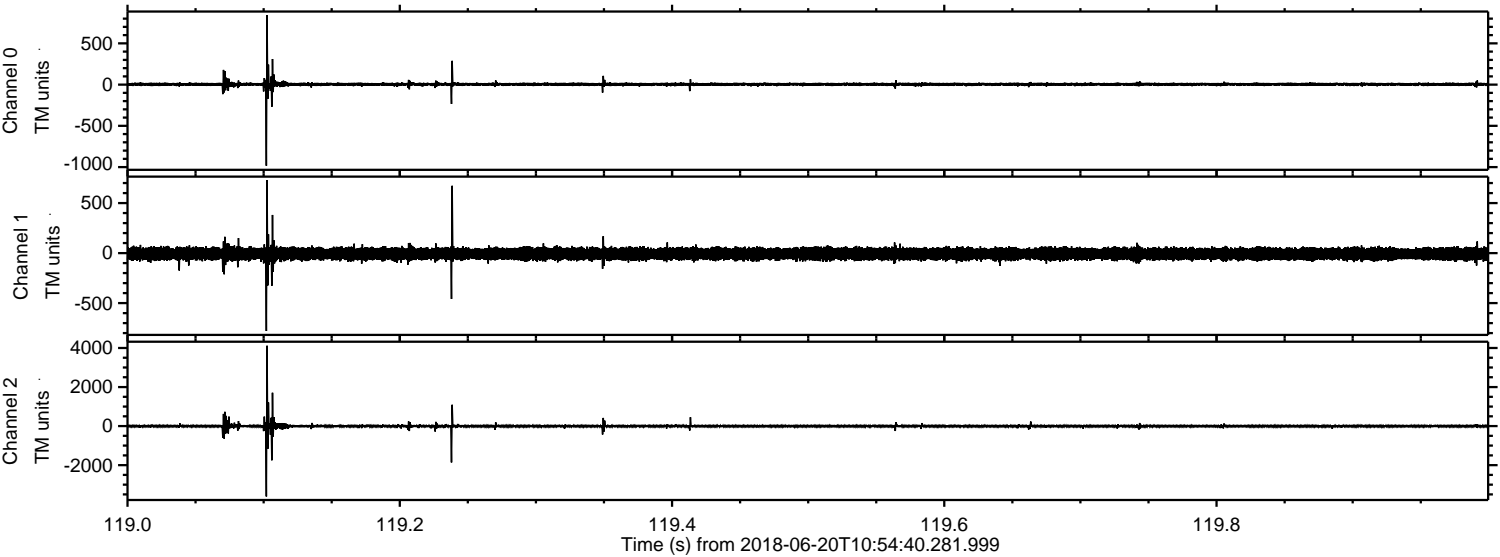
Processed Wed Jun 20 13:02:23 2018 by ELM ver.2012-10-06 from 001\_\_elm20180620\_105439\_\_dat00.bin





ELMAVAN 3D WAVEFORMS (Measured data sampled at 50 kHz) 51000 packets of 144 samples from 2018-06-20T10:54:40.281.999. Part 120/147

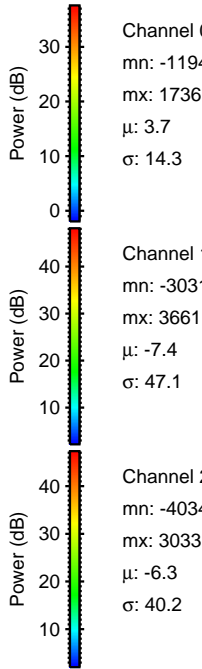
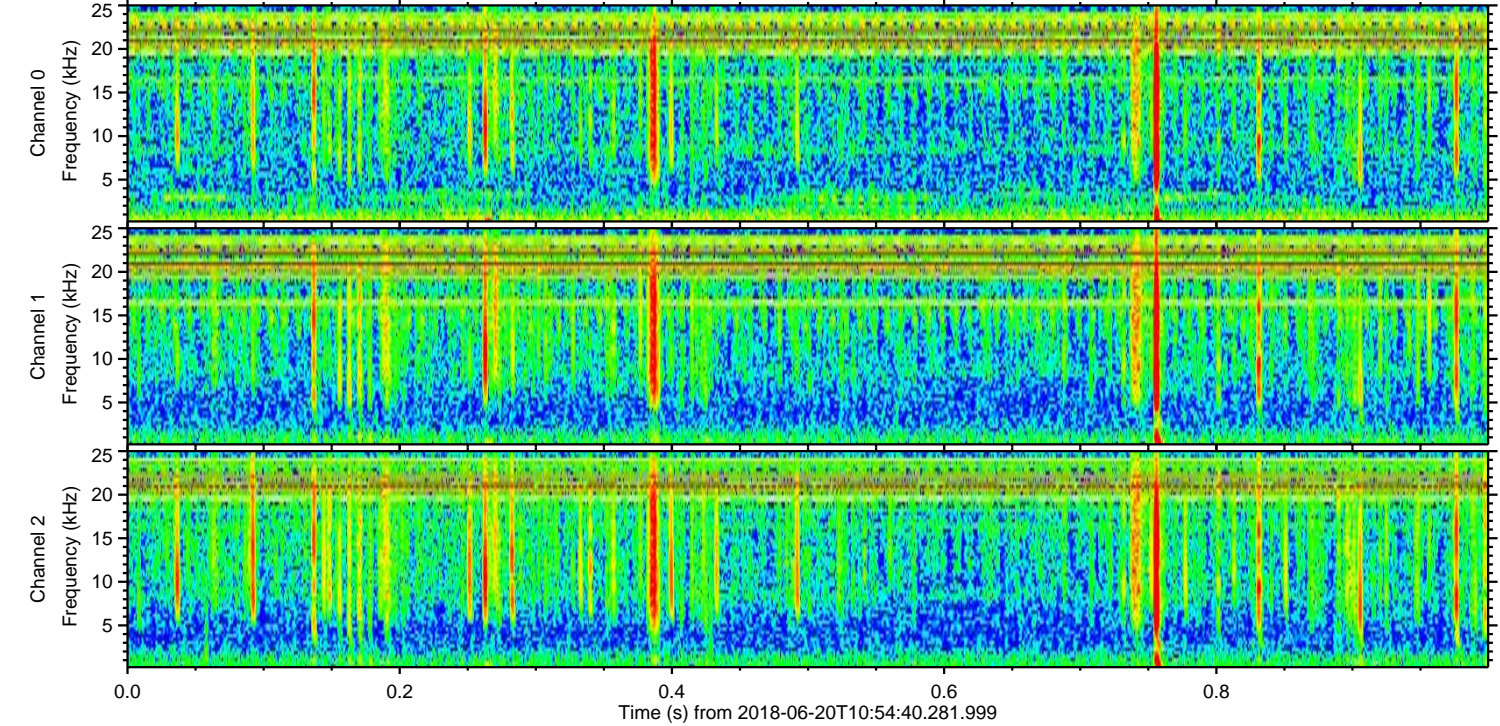
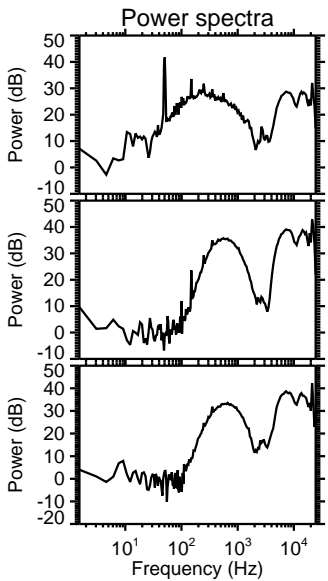
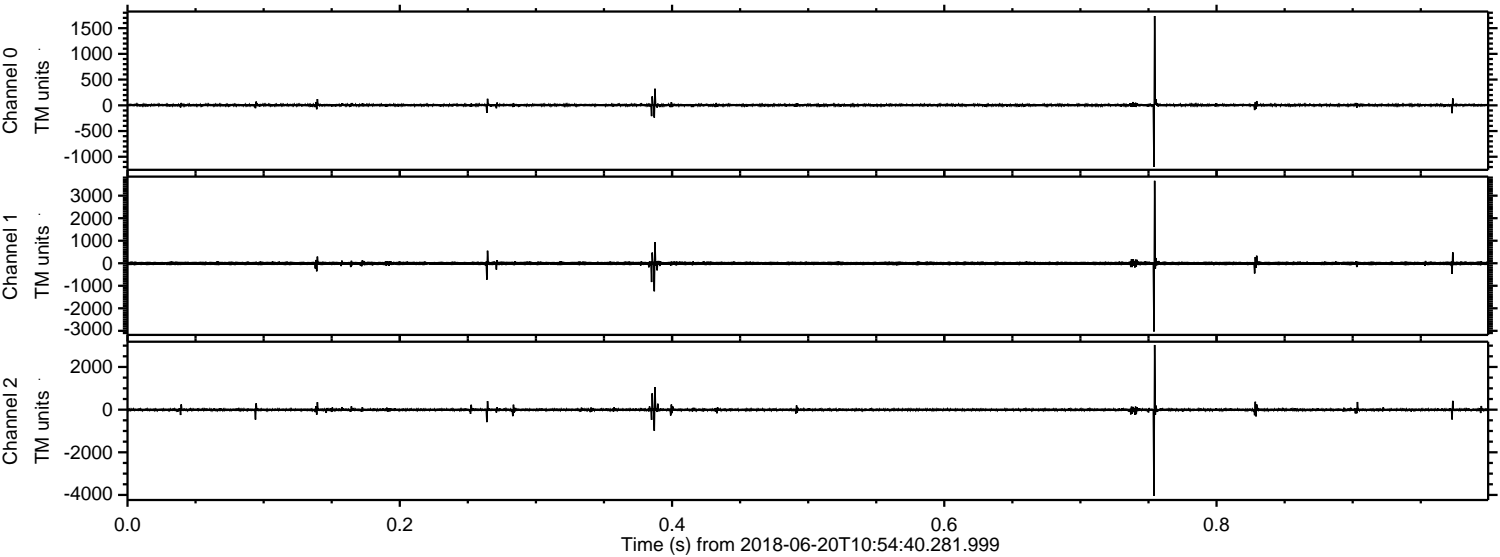
Processed Wed Jun 20 13:02:24 2018 by ELM ver.2012-10-06 from 001\_\_elm20180620\_105439\_\_dat00.bin





ELMAVAN 3D WAVEFORMS (Measured data sampled at 50 kHz) 51000 packets of 144 samples from 2018-06-20T10:54:40.281.999. Part 1/147

Processed Wed Jun 20 13:02:25 2018 by ELM ver.2012-10-06 from 001\_\_elm20180620\_105439\_\_dat00.bin



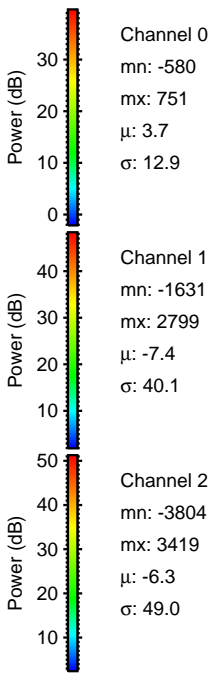
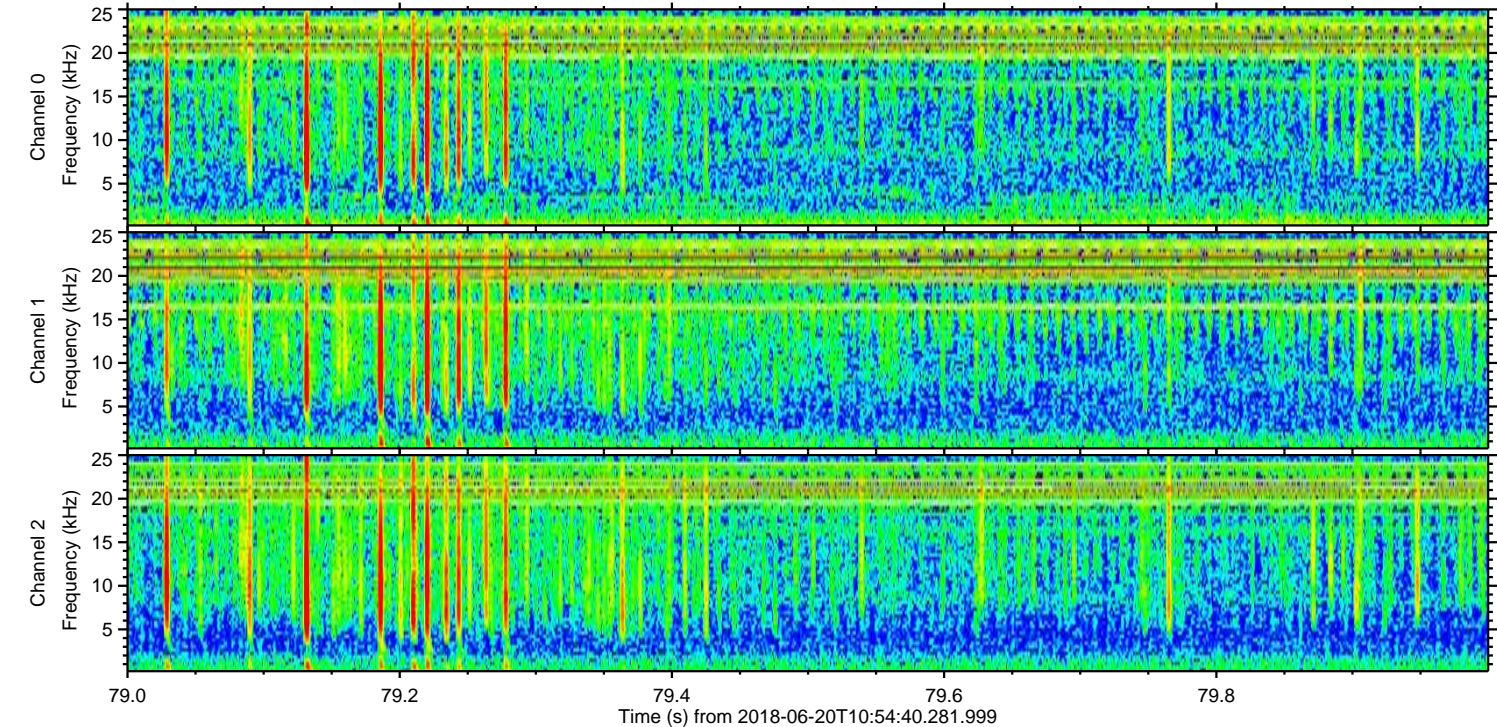
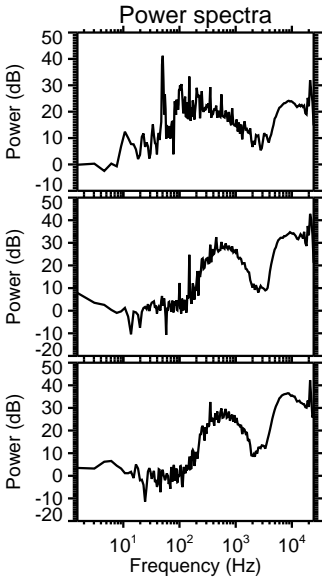
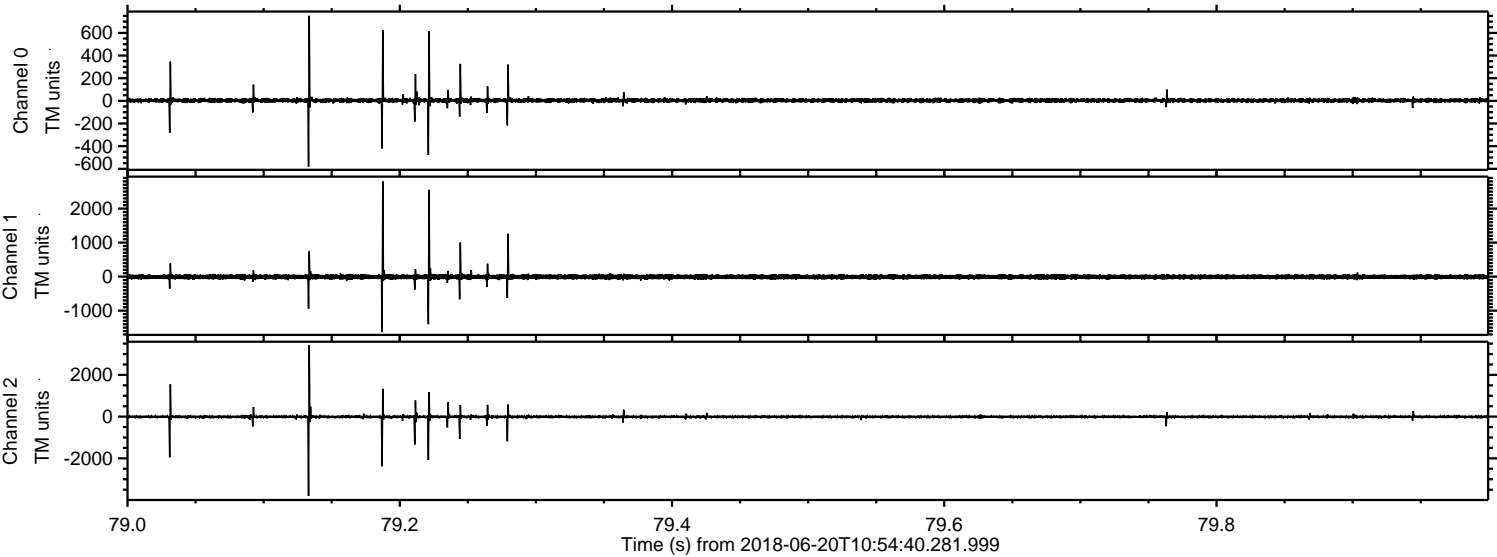
Channel 0  
mn: -1194  
mx: 1736  
 $\mu$ : 3.7  
 $\sigma$ : 14.3

Channel 1  
mn: -3031  
mx: 3661  
 $\mu$ : -7.4  
 $\sigma$ : 47.1

Channel 2  
mn: -4034  
mx: 3033  
 $\mu$ : -6.3  
 $\sigma$ : 40.2



Processed Wed Jun 20 13:02:25 2018 by ELM ver.2012-10-06 from 001\_\_elm20180620\_105439\_\_dat00.bin





Processed Wed Jun 20 13:02:26 2018 by ELM ver.2012-10-06 from 001\_\_elm20180620\_105439\_\_dat00.bin

