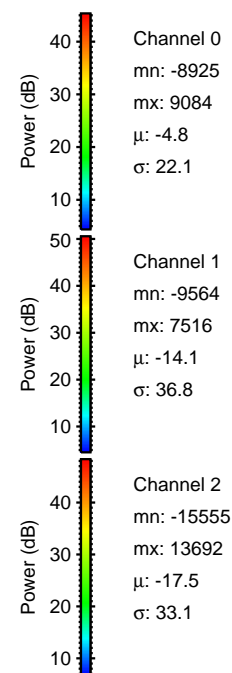
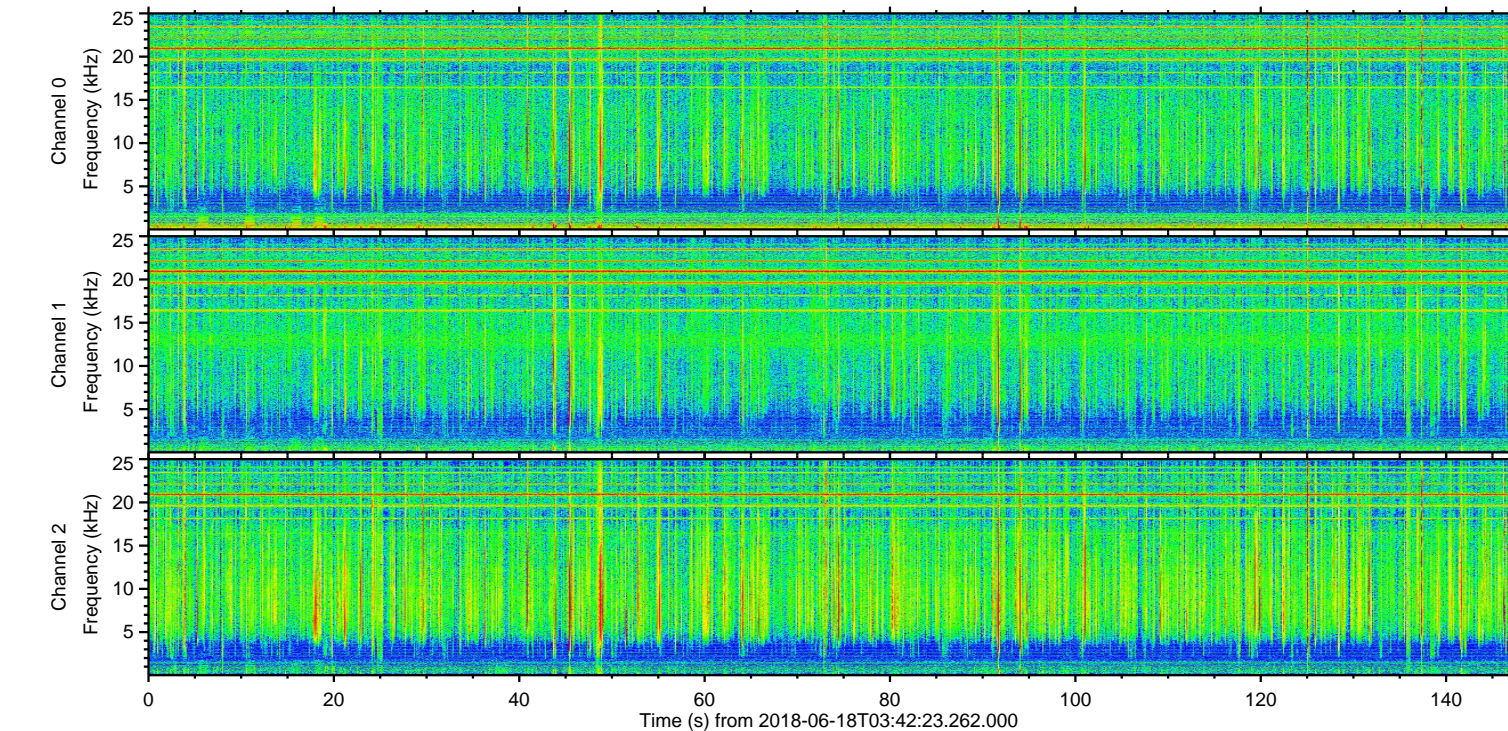
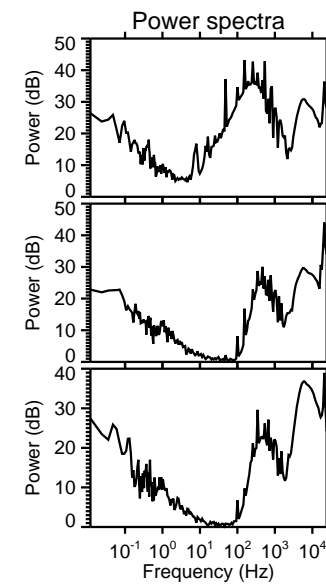
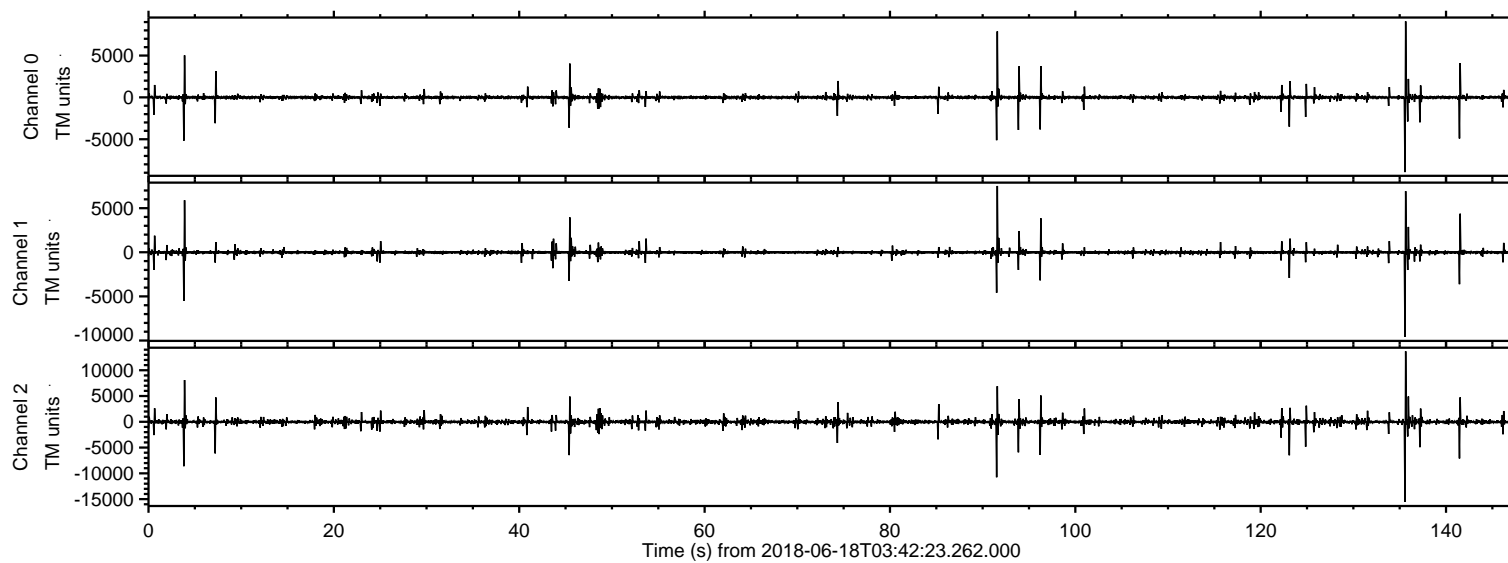


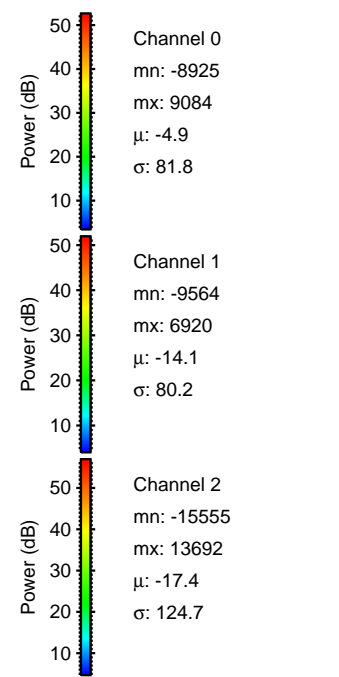
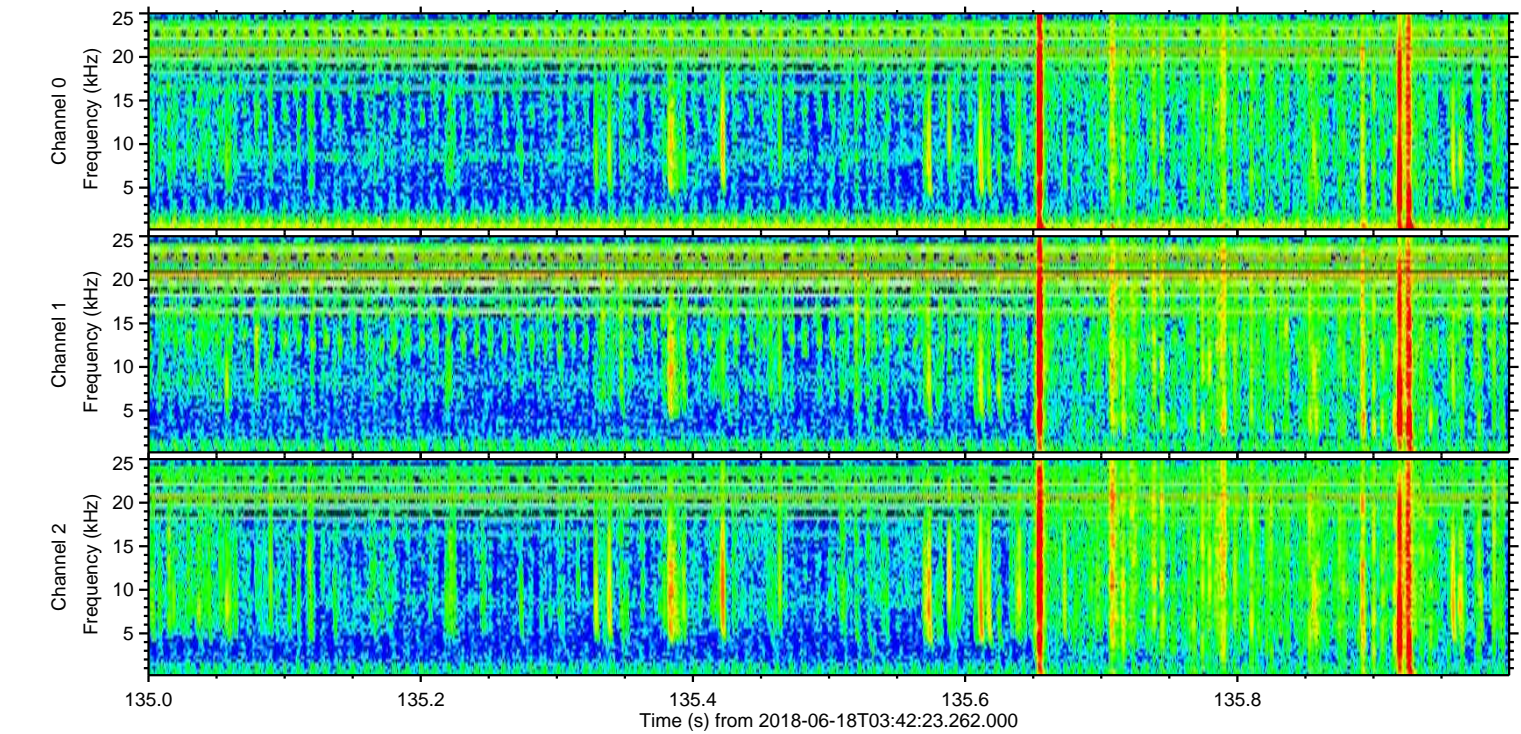
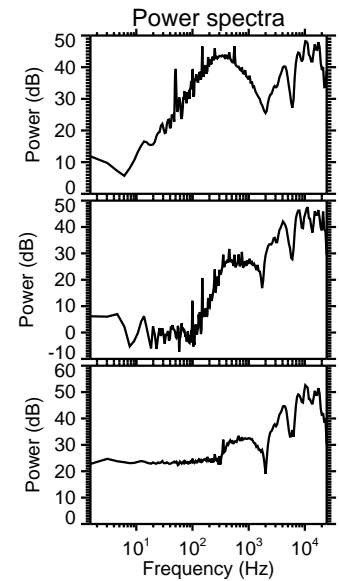
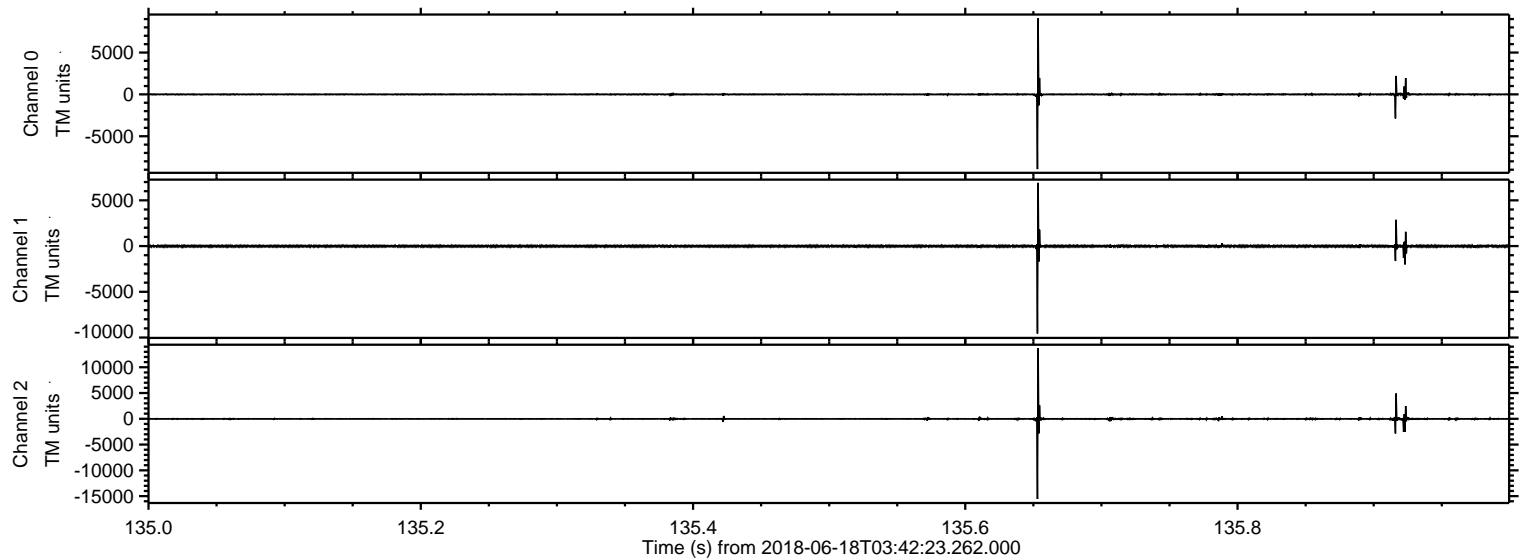
ELMAVAN 3D WAVEFORMS (Measured data sampled at 50 kHz) 51000 packets of 144 samples from 2018-06-18T03:42:23.262.000.

Processed Mon Jun 18 05:49:56 2018 by ELM ver.2012-10-06 from 001__elm20180618_034222__dat00.bin



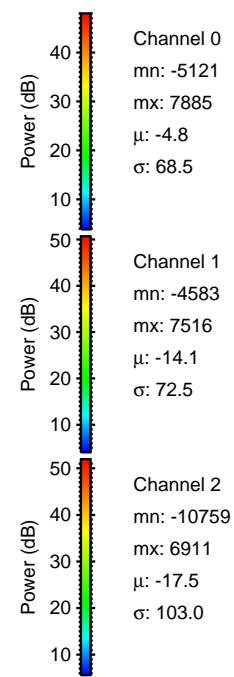
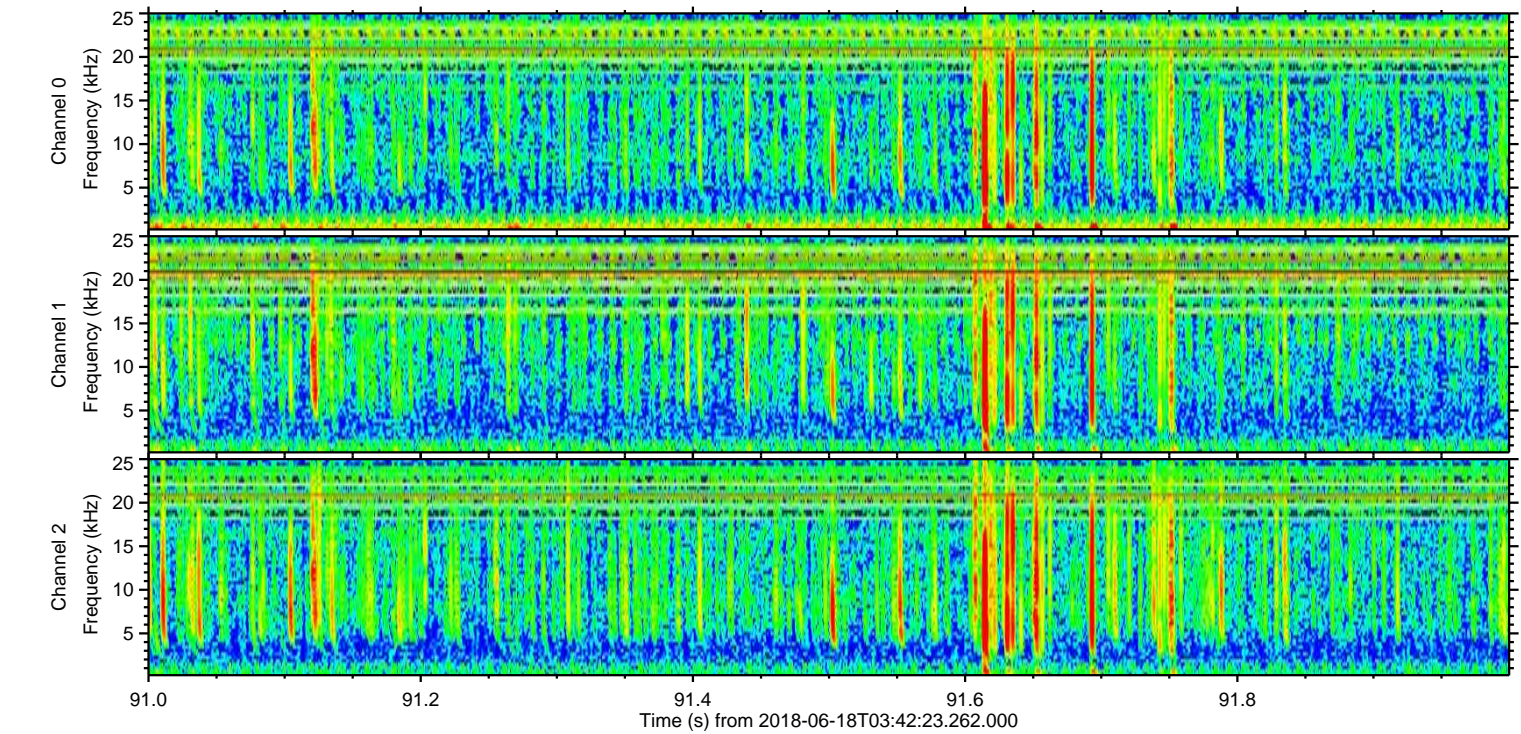
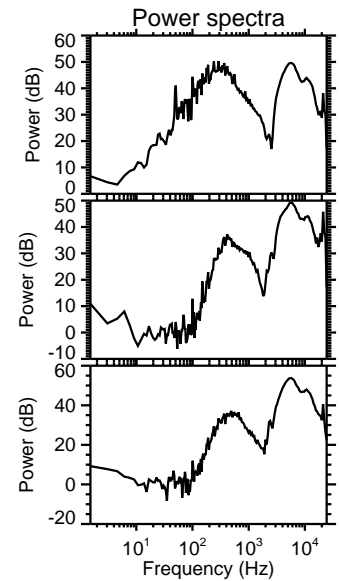
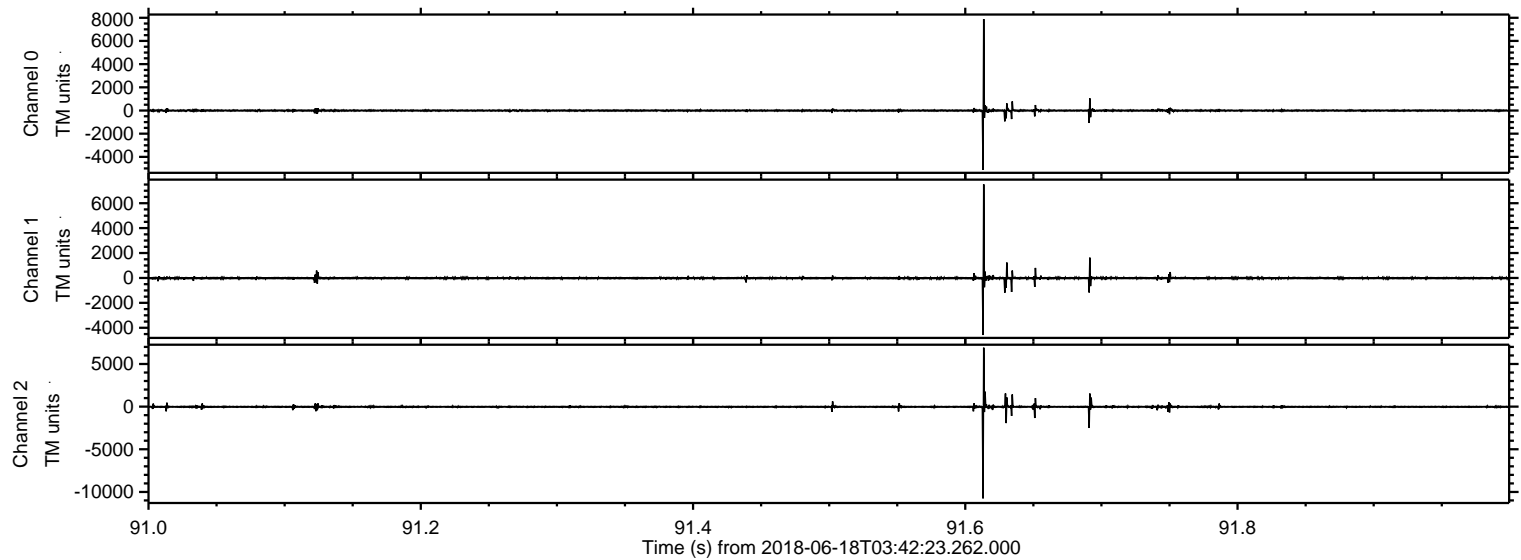
ELMAVAN 3D WAVEFORMS (Measured data sampled at 50 kHz) 51000 packets of 144 samples from 2018-06-18T03:42:23.262.000. Part 136/147

Processed Mon Jun 18 05:50:03 2018 by ELM ver.2012-10-06 from 001__elm20180618_034222__dat00.bin



ELMAVAN 3D WAVEFORMS (Measured data sampled at 50 kHz) 51000 packets of 144 samples from 2018-06-18T03:42:23.262.000. Part 92/147

Processed Mon Jun 18 05:50:03 2018 by ELM ver.2012-10-06 from 001__elm20180618_034222__dat00.bin

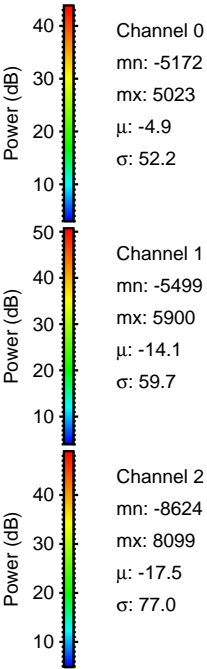
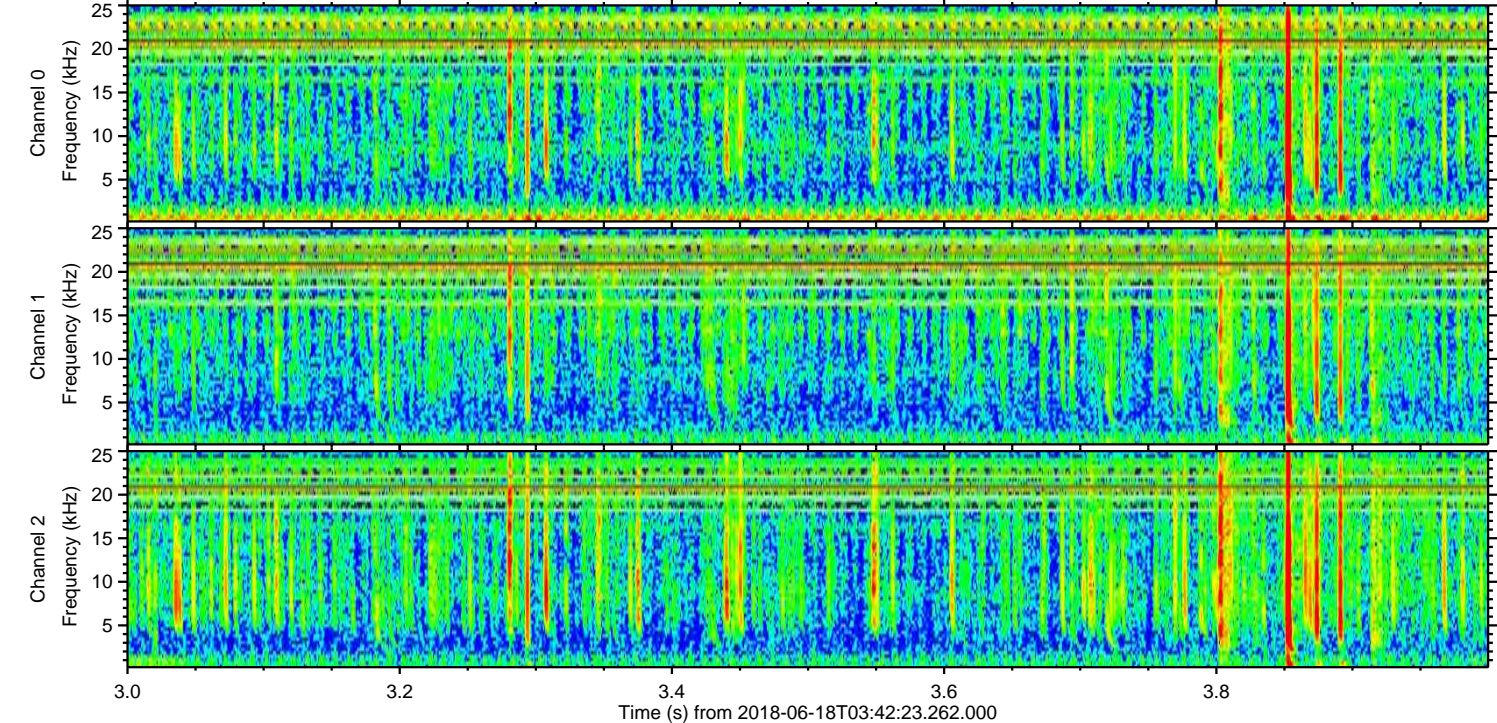
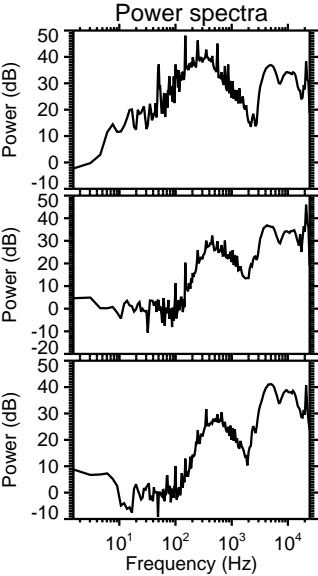
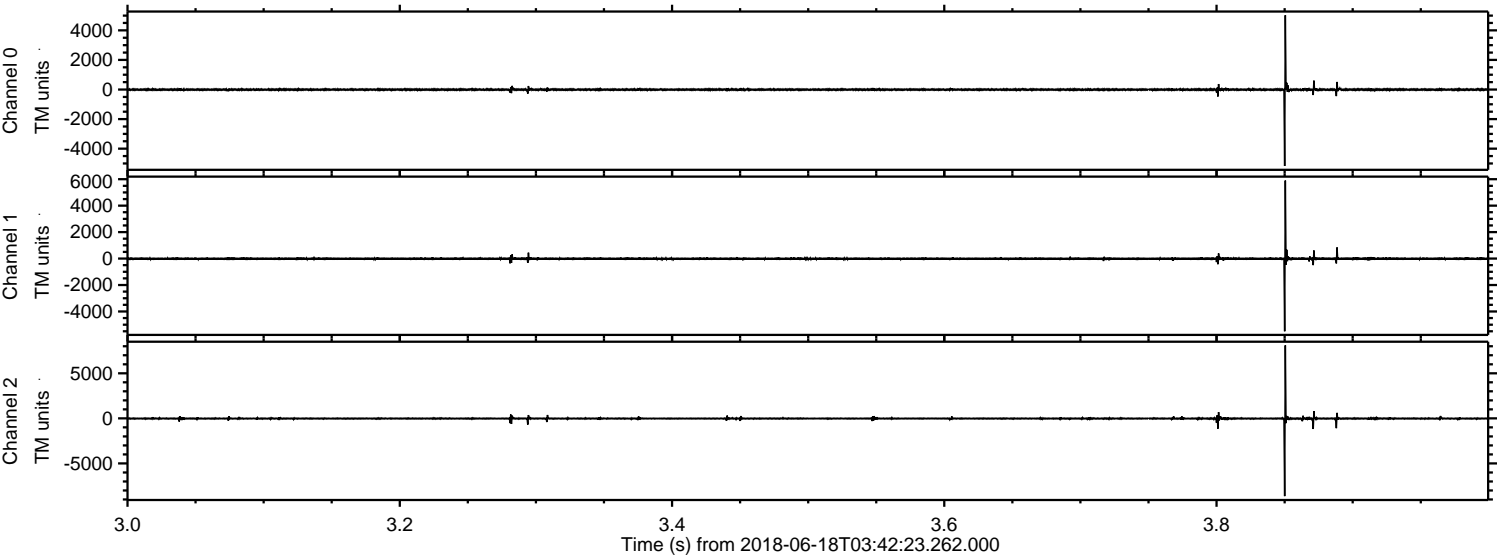


Channel 0
mn: -5121
mx: 7885
 μ : -4.8
 σ : 68.5

Channel 1
mn: -4583
mx: 7516
 μ : -14.1
 σ : 72.5

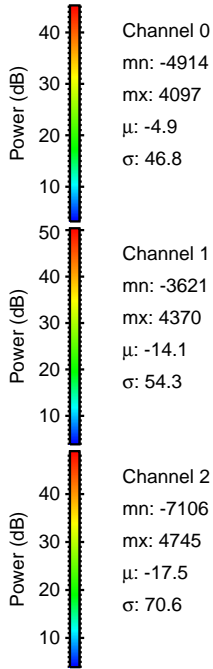
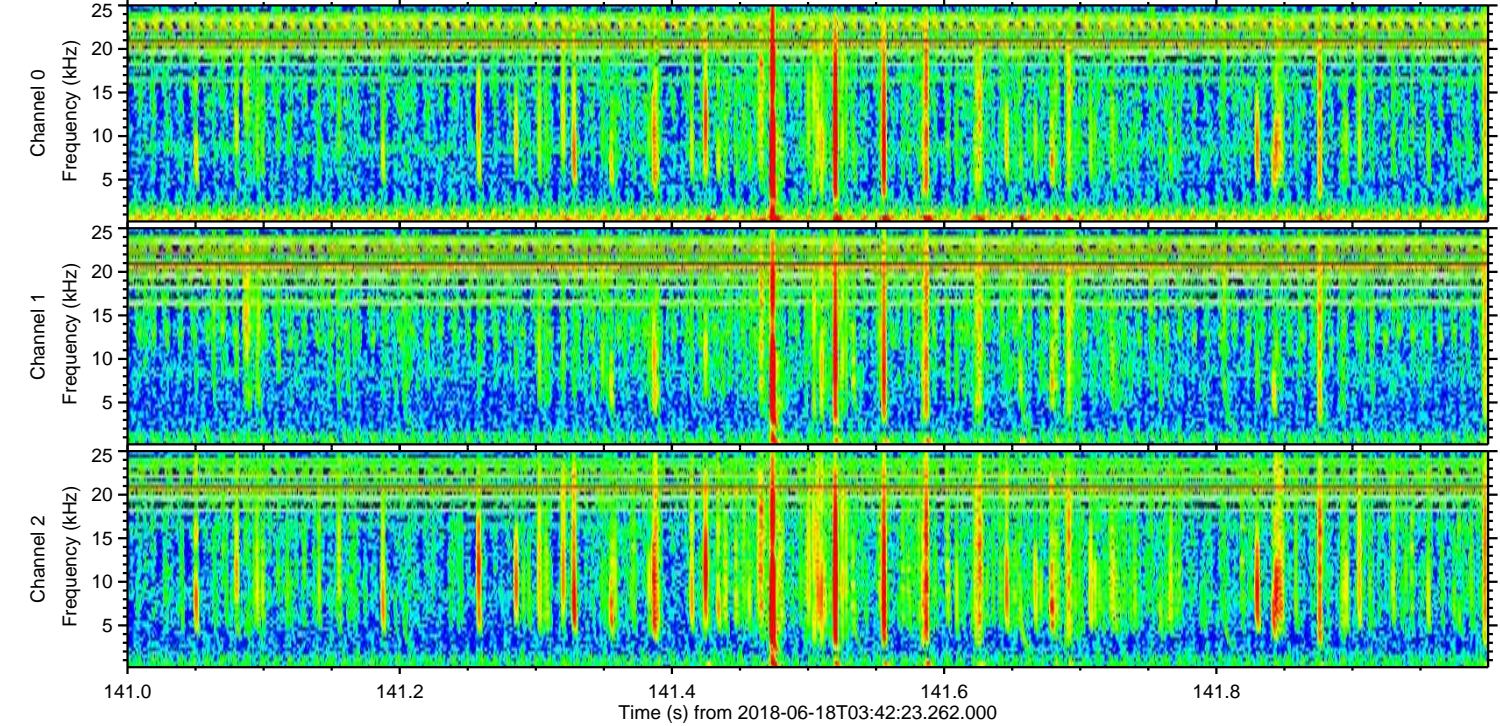
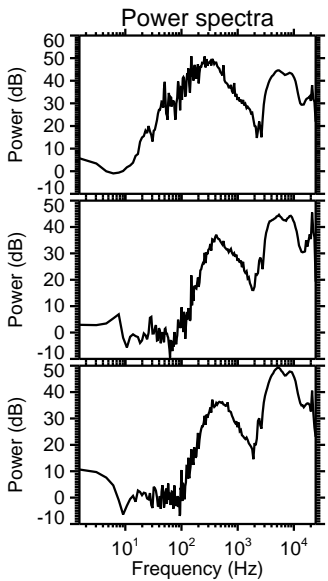
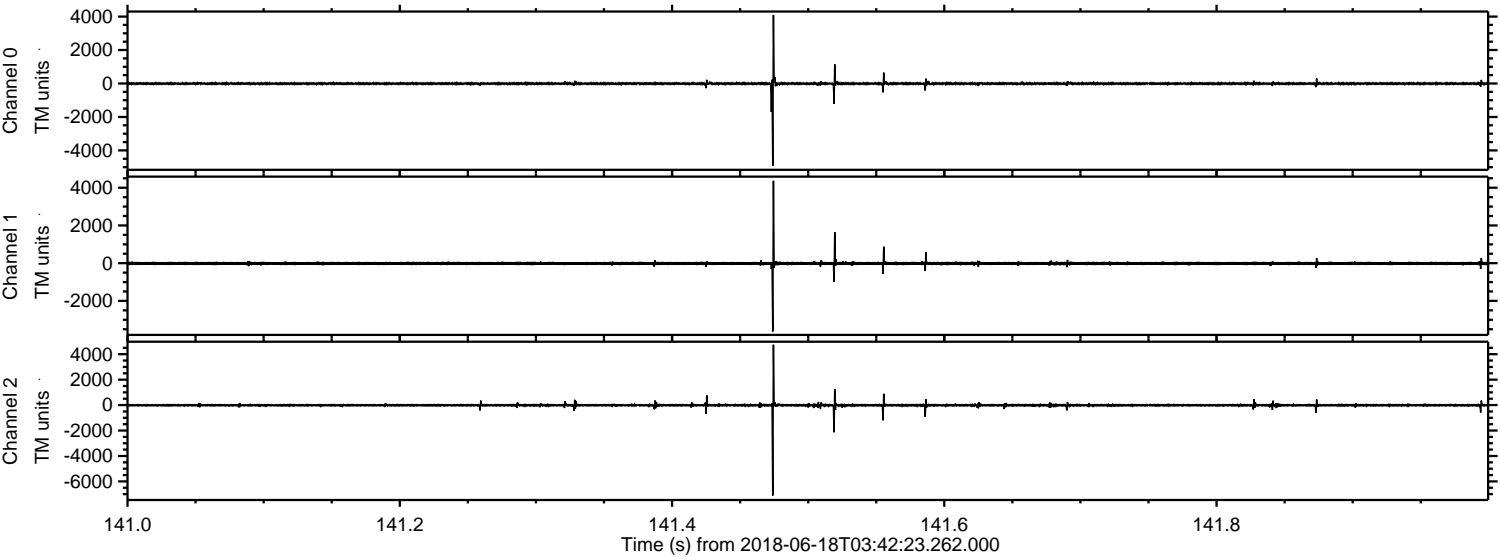
Channel 2
mn: -10759
mx: 6911
 μ : -17.5
 σ : 103.0

Processed Mon Jun 18 05:50:04 2018 by ELM ver.2012-10-06 from 001__elm20180618_034222__dat00.bin



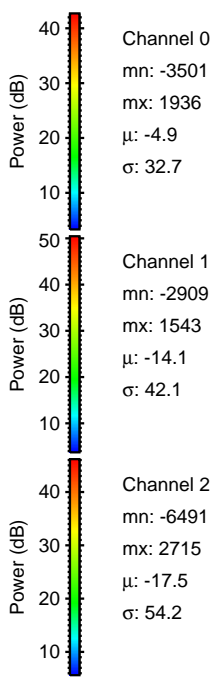
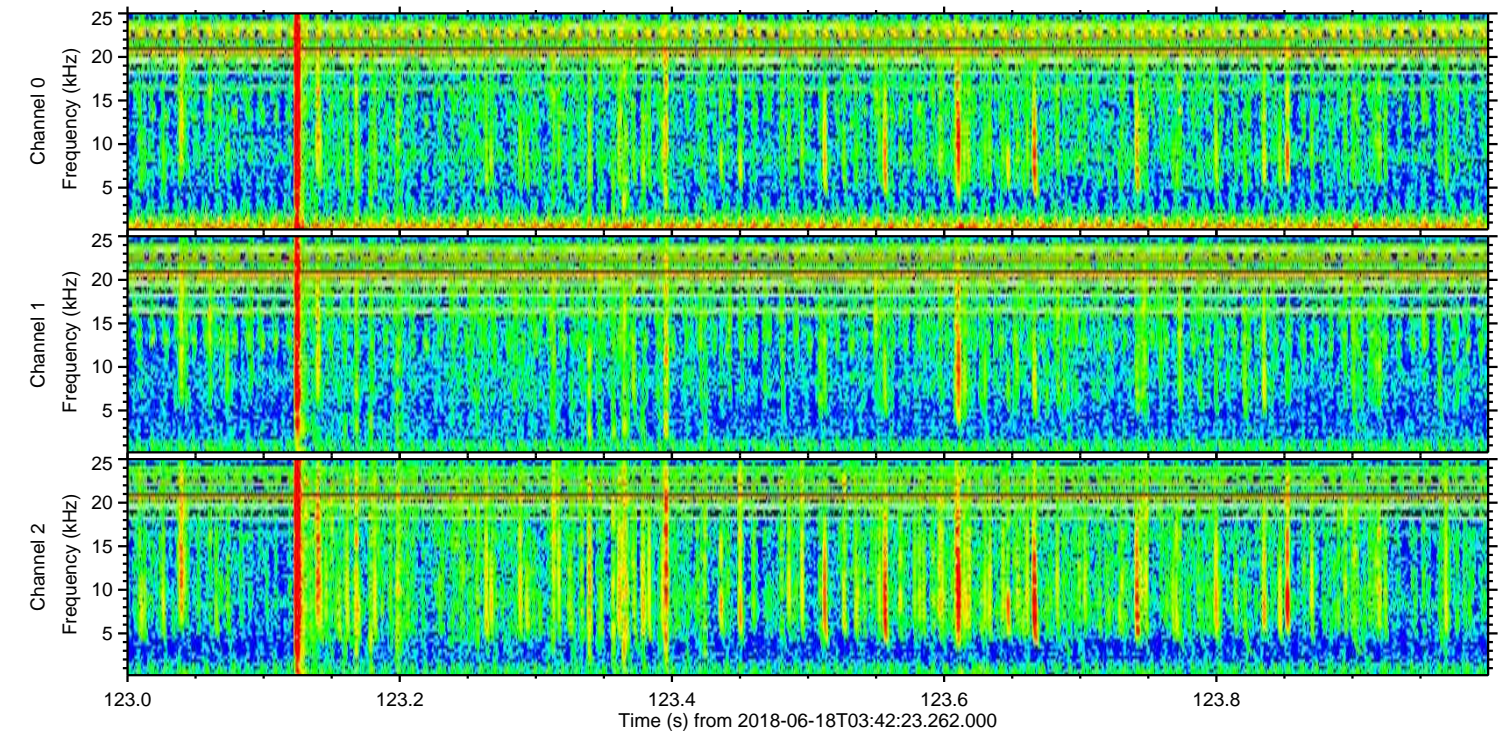
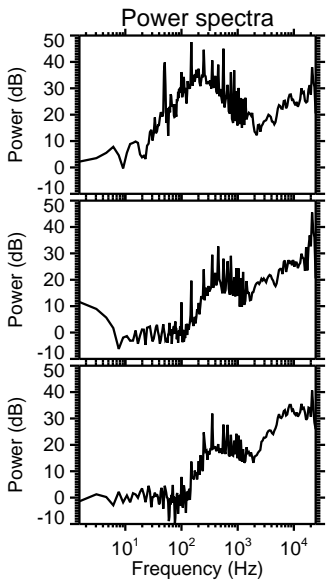
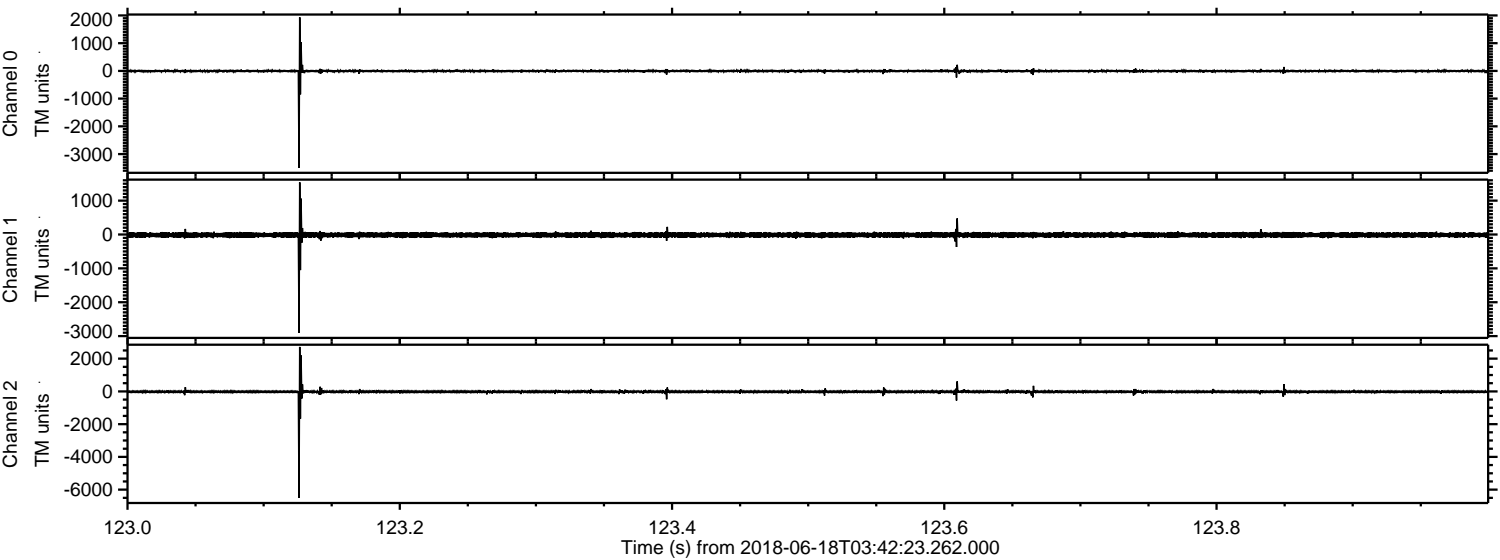
ELMAVAN 3D WAVEFORMS (Measured data sampled at 50 kHz) 51000 packets of 144 samples from 2018-06-18T03:42:23.262.000. Part 142/147

Processed Mon Jun 18 05:50:05 2018 by ELM ver.2012-10-06 from 001__elm20180618_034222__dat00.bin

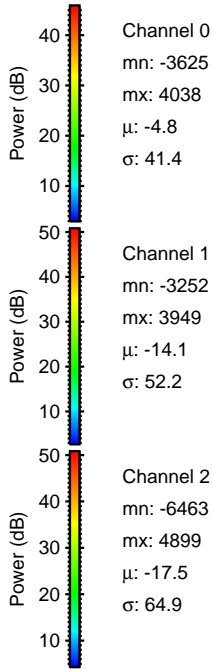
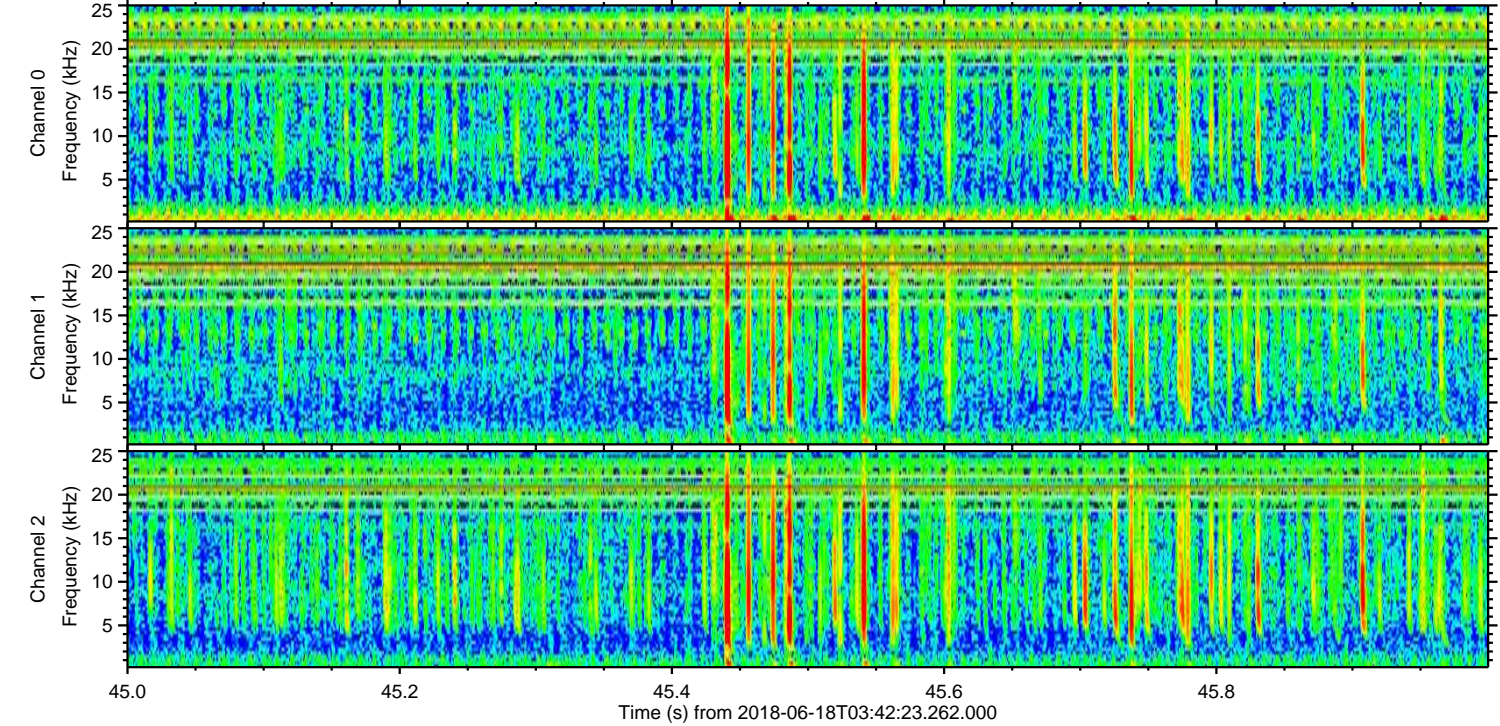
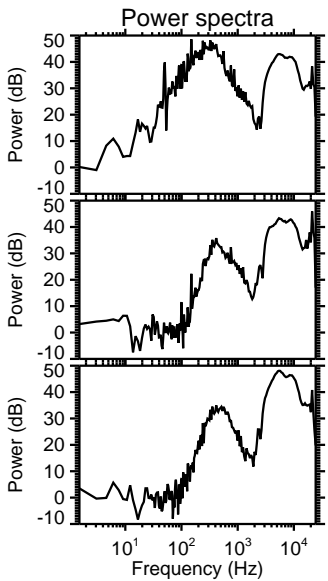
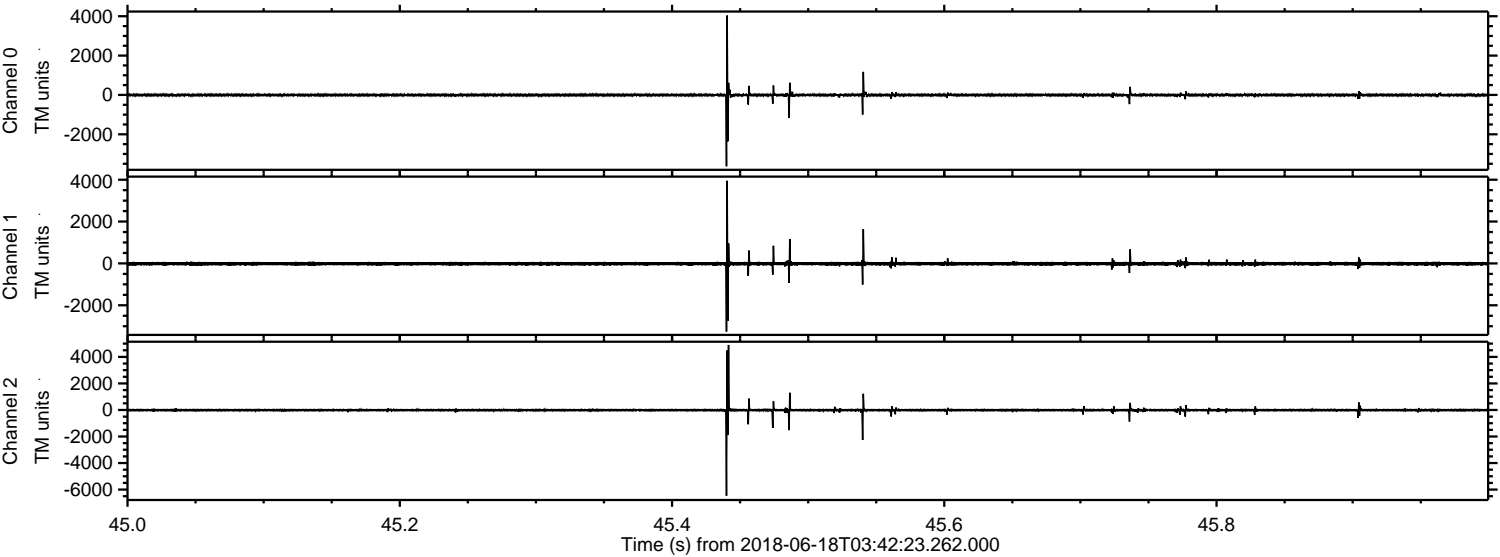


ELMAVAN 3D WAVEFORMS (Measured data sampled at 50 kHz) 51000 packets of 144 samples from 2018-06-18T03:42:23.262.000. Part 124/147

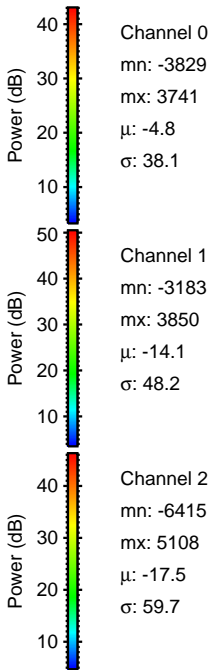
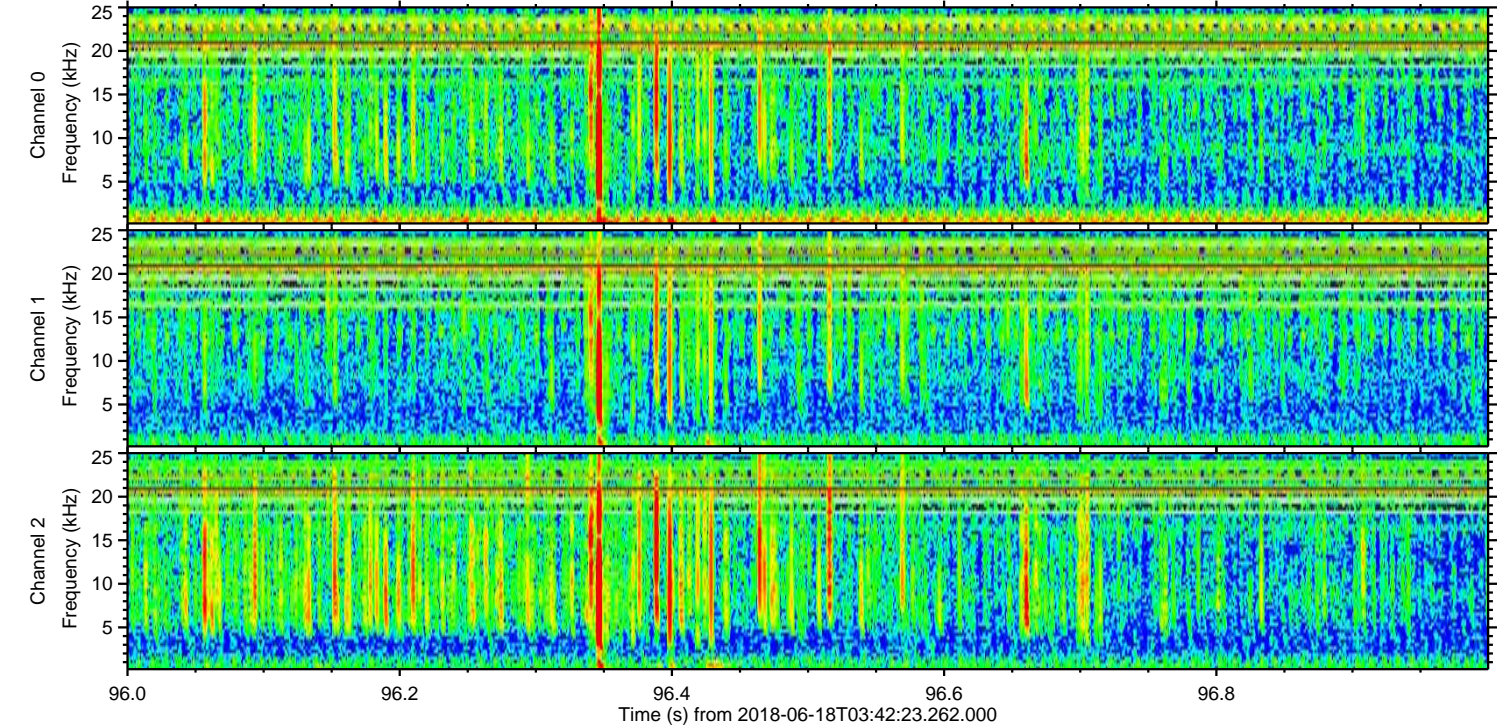
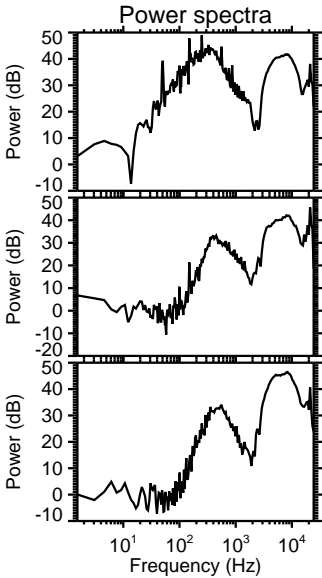
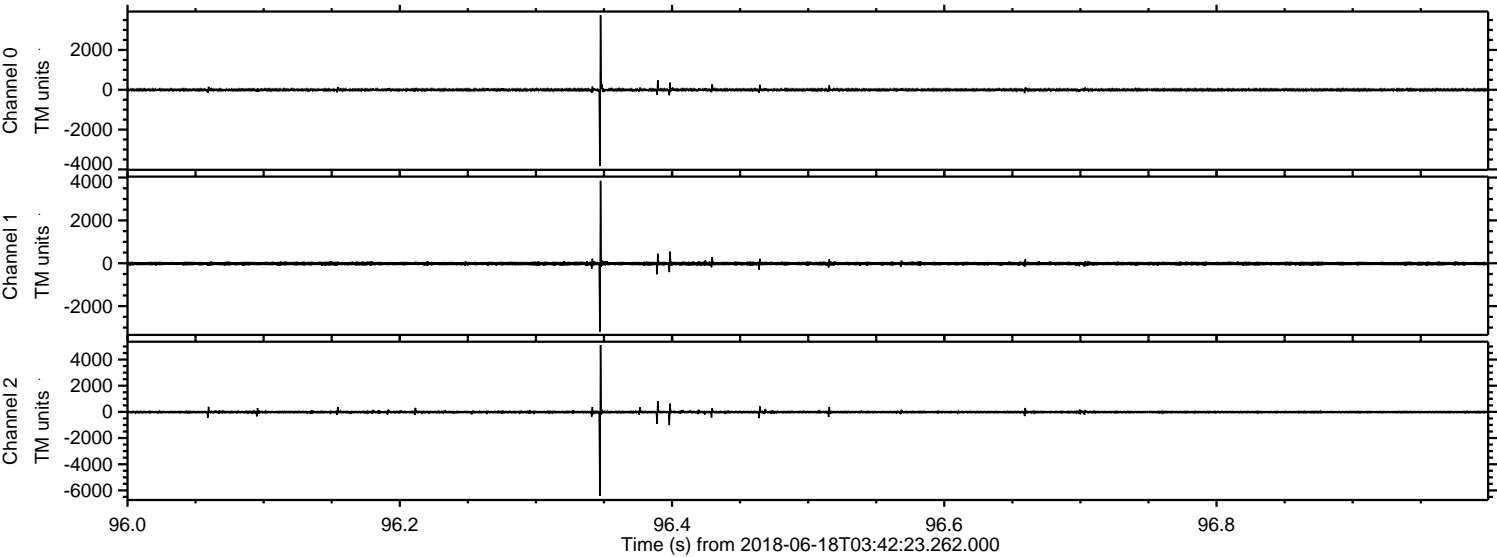
Processed Mon Jun 18 05:50:05 2018 by ELM ver.2012-10-06 from 001__elm20180618_034222__dat00.bin



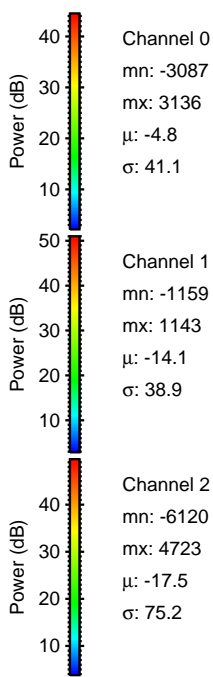
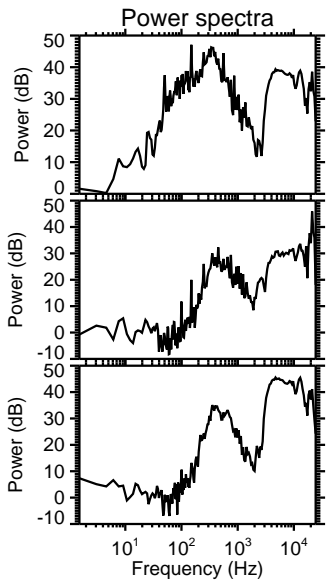
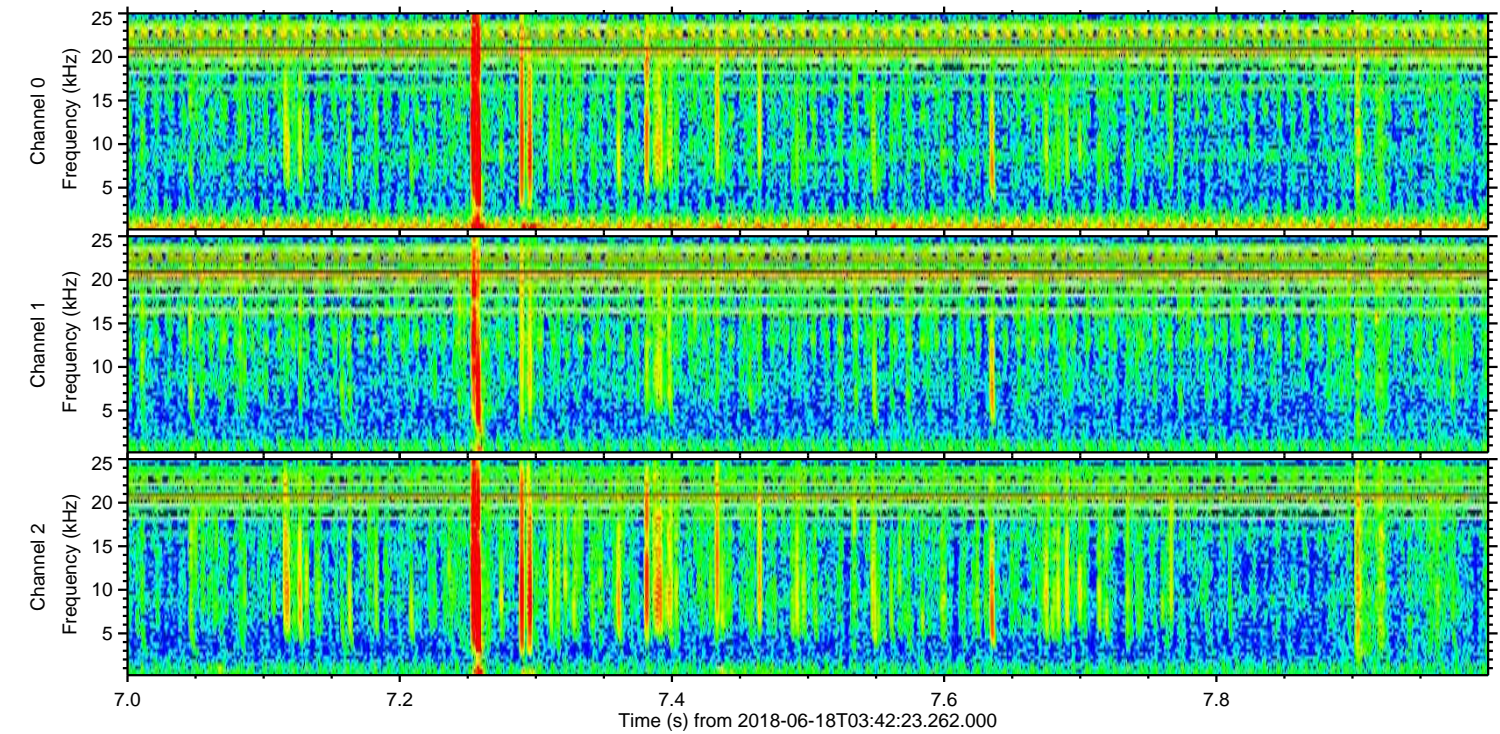
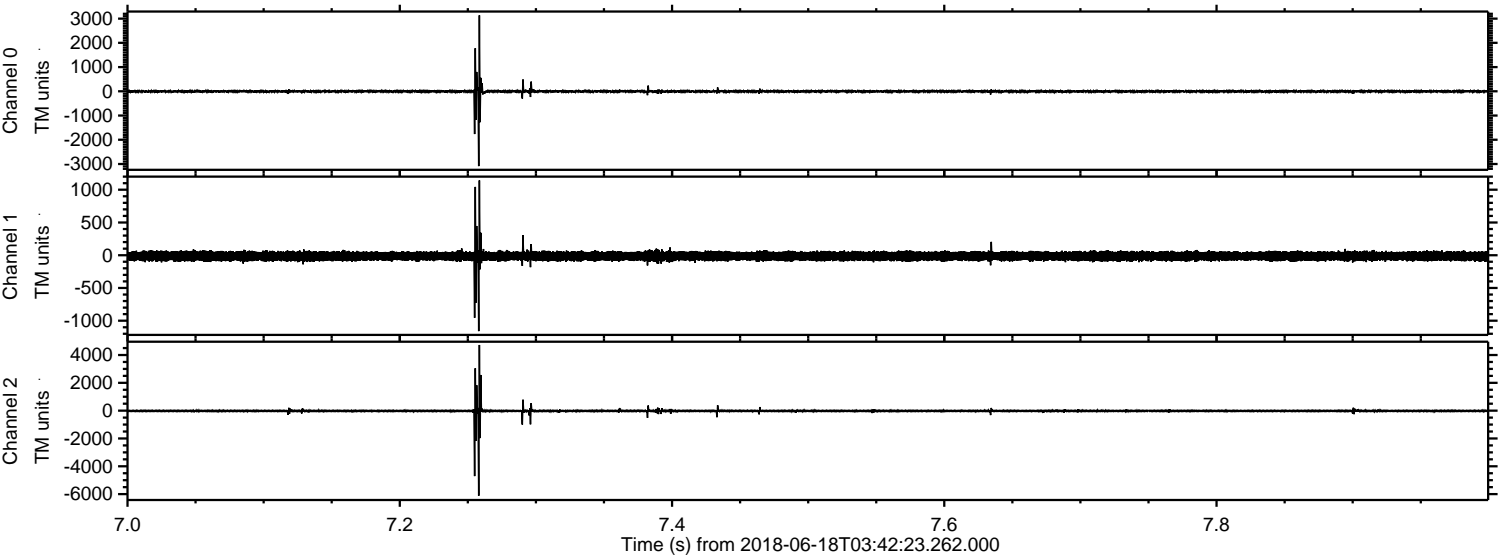
Processed Mon Jun 18 05:50:06 2018 by ELM ver.2012-10-06 from 001__elm20180618_034222__dat00.bin



Processed Mon Jun 18 05:50:06 2018 by ELM ver.2012-10-06 from 001__elm20180618_034222__dat00.bin



Processed Mon Jun 18 05:50:07 2018 by ELM ver.2012-10-06 from 001__elm20180618_034222__dat00.bin

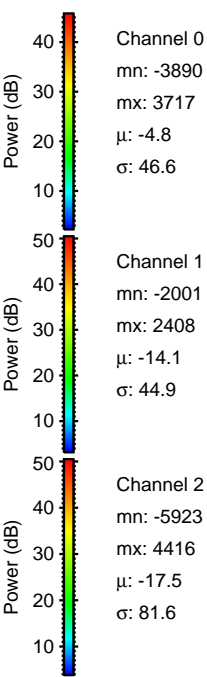
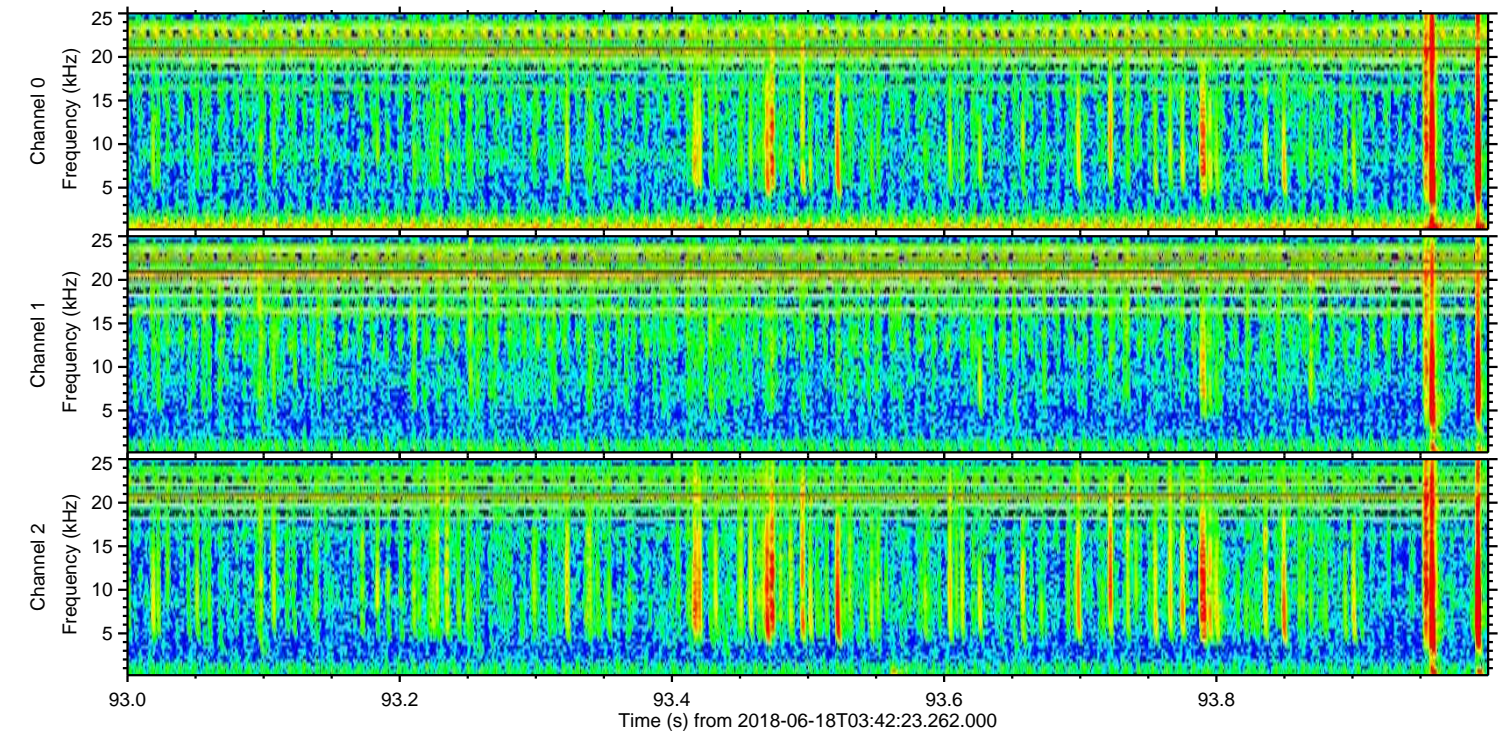
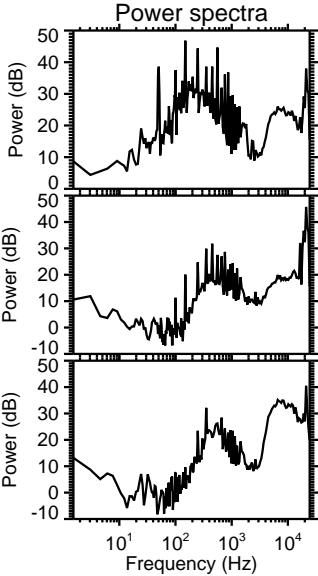
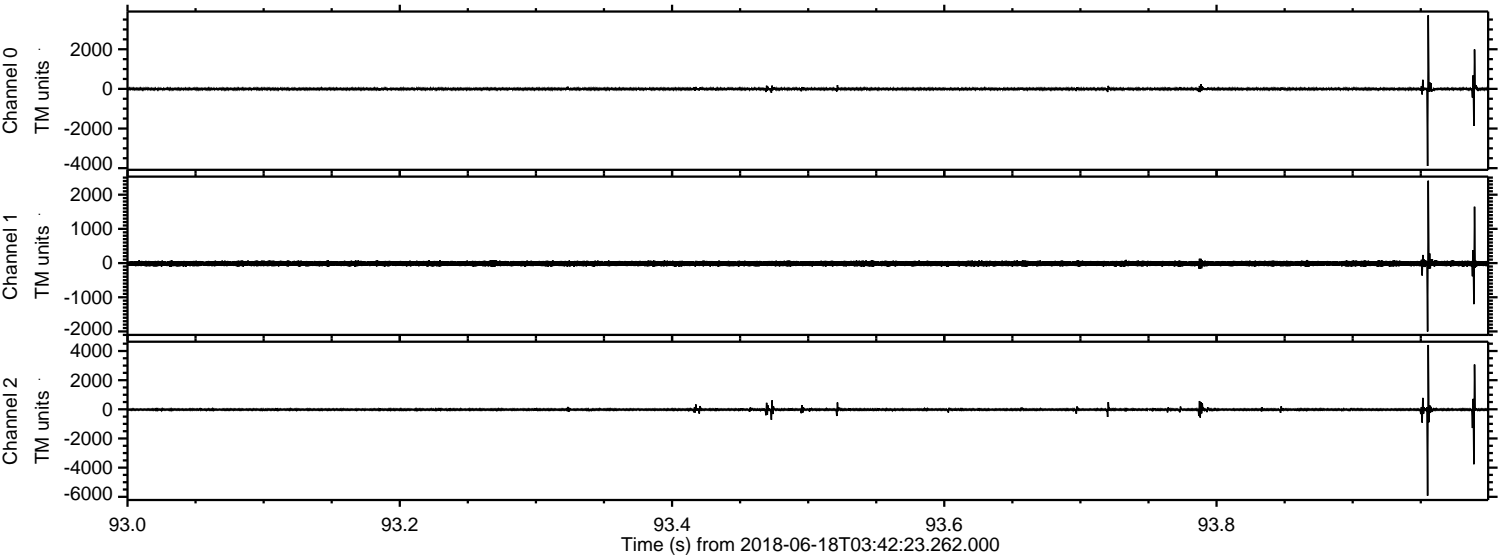


Channel 0
mn: -3087
mx: 3136
 μ : -4.8
 σ : 41.1

Channel 1
mn: -1159
mx: 1143
 μ : -14.1
 σ : 38.9

Channel 2
mn: -6120
mx: 4723
 μ : -17.5
 σ : 75.2

Processed Mon Jun 18 05:50:08 2018 by ELM ver.2012-10-06 from 001__elm20180618_034222__dat00.bin



Processed Mon Jun 18 05:50:08 2018 by ELM ver.2012-10-06 from 001__elm20180618_034222__dat00.bin

