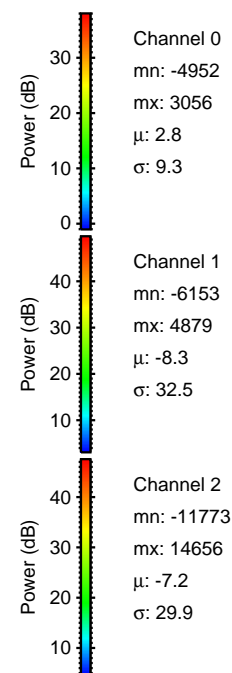
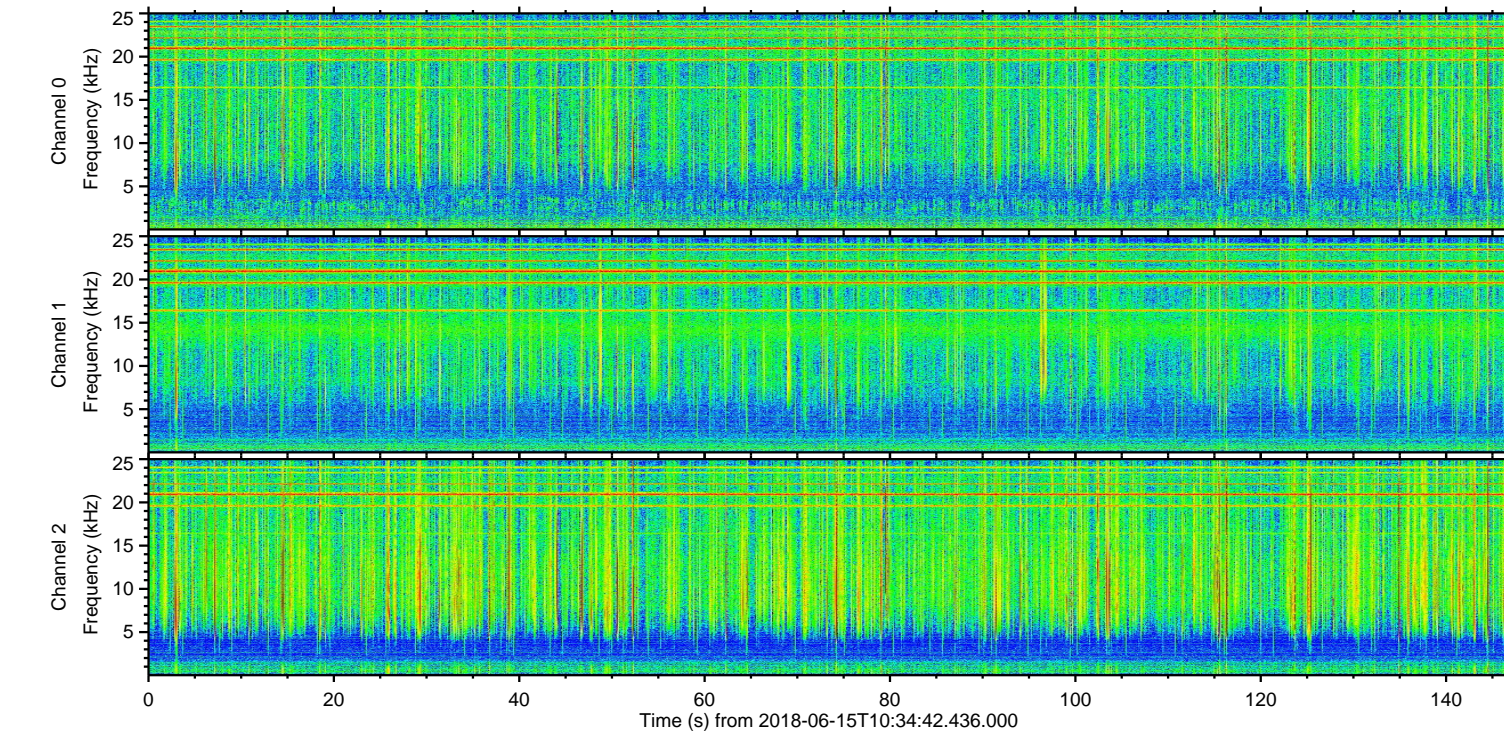
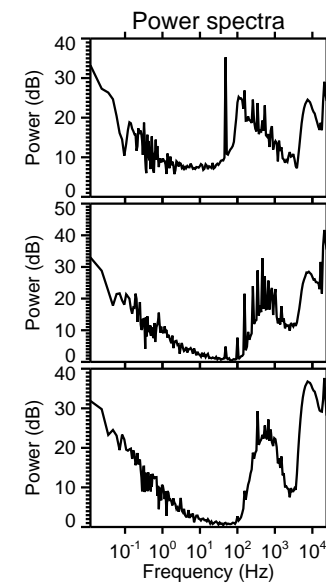
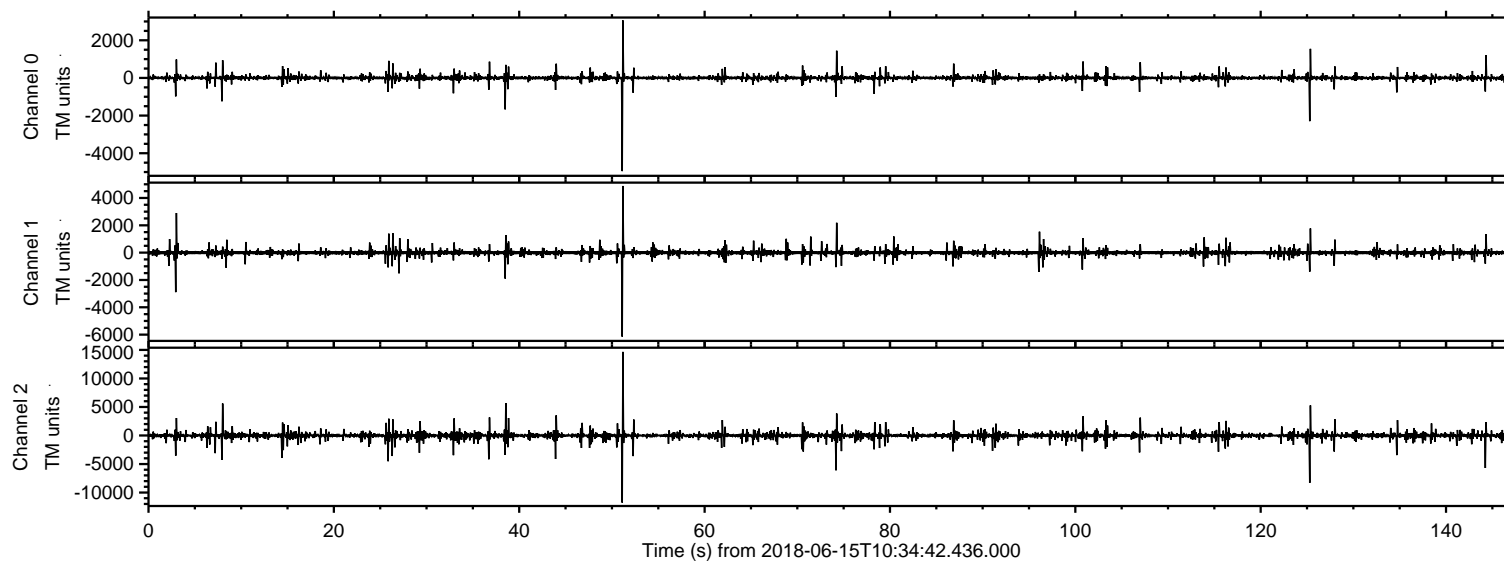
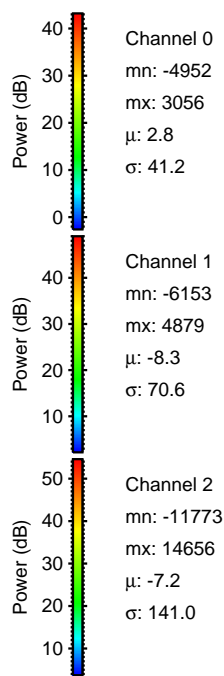
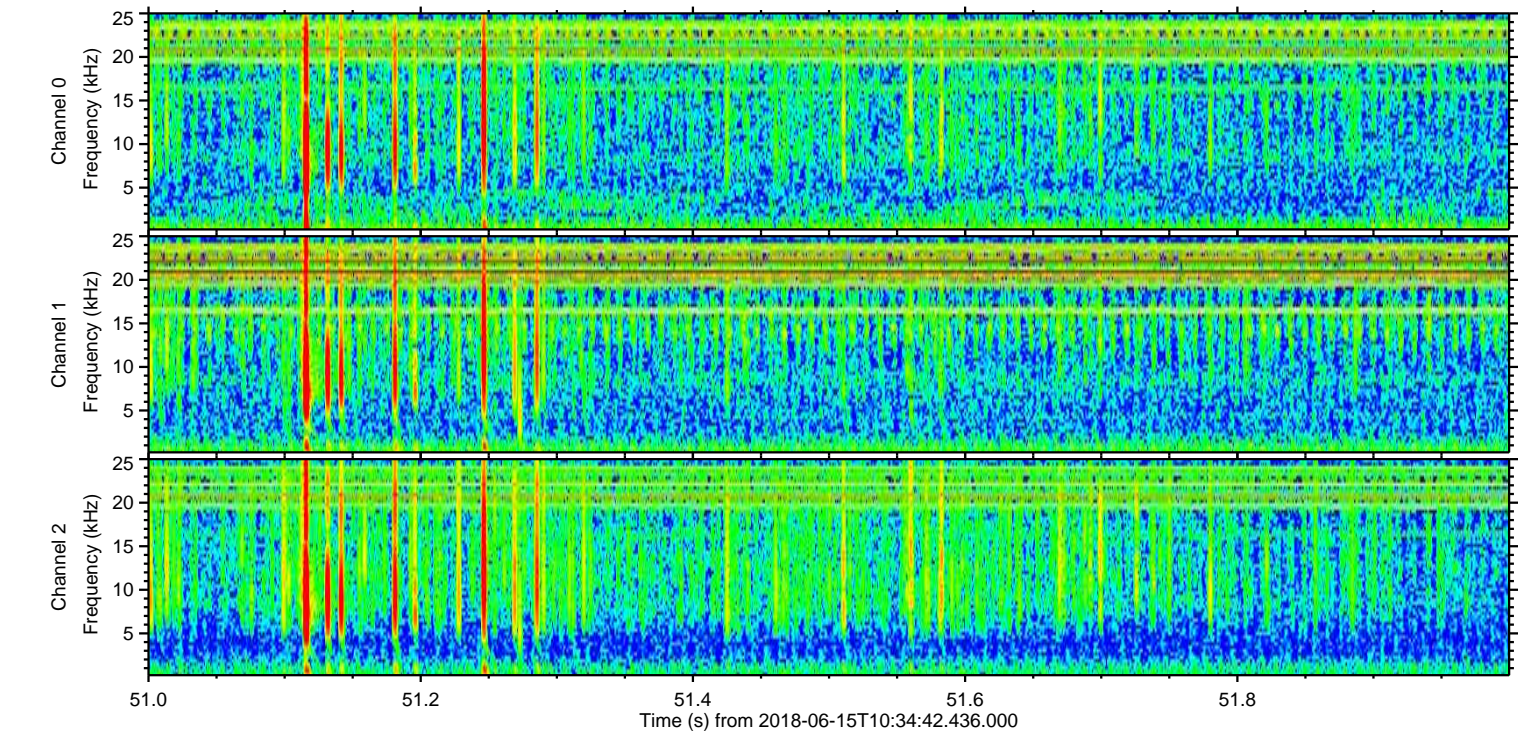
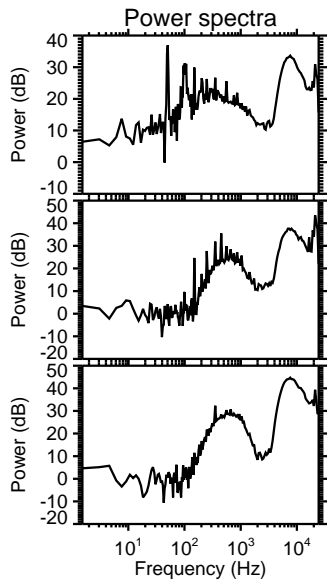
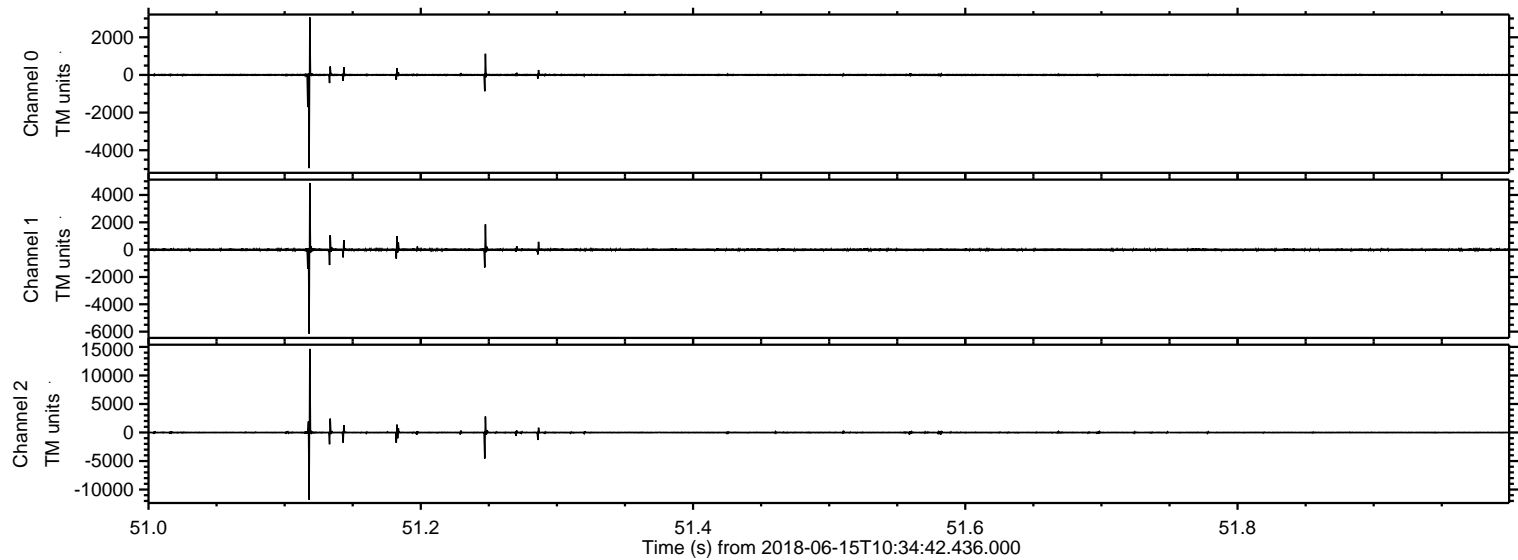


ELMAVAN 3D WAVEFORMS (Measured data sampled at 50 kHz) 51000 packets of 144 samples from 2018-06-15T10:34:42.436.000.

Processed Fri Jun 15 12:42:21 2018 by ELM ver.2012-10-06 from 001__elm20180615_103441__dat00.bin

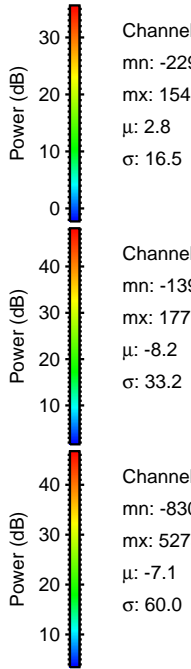
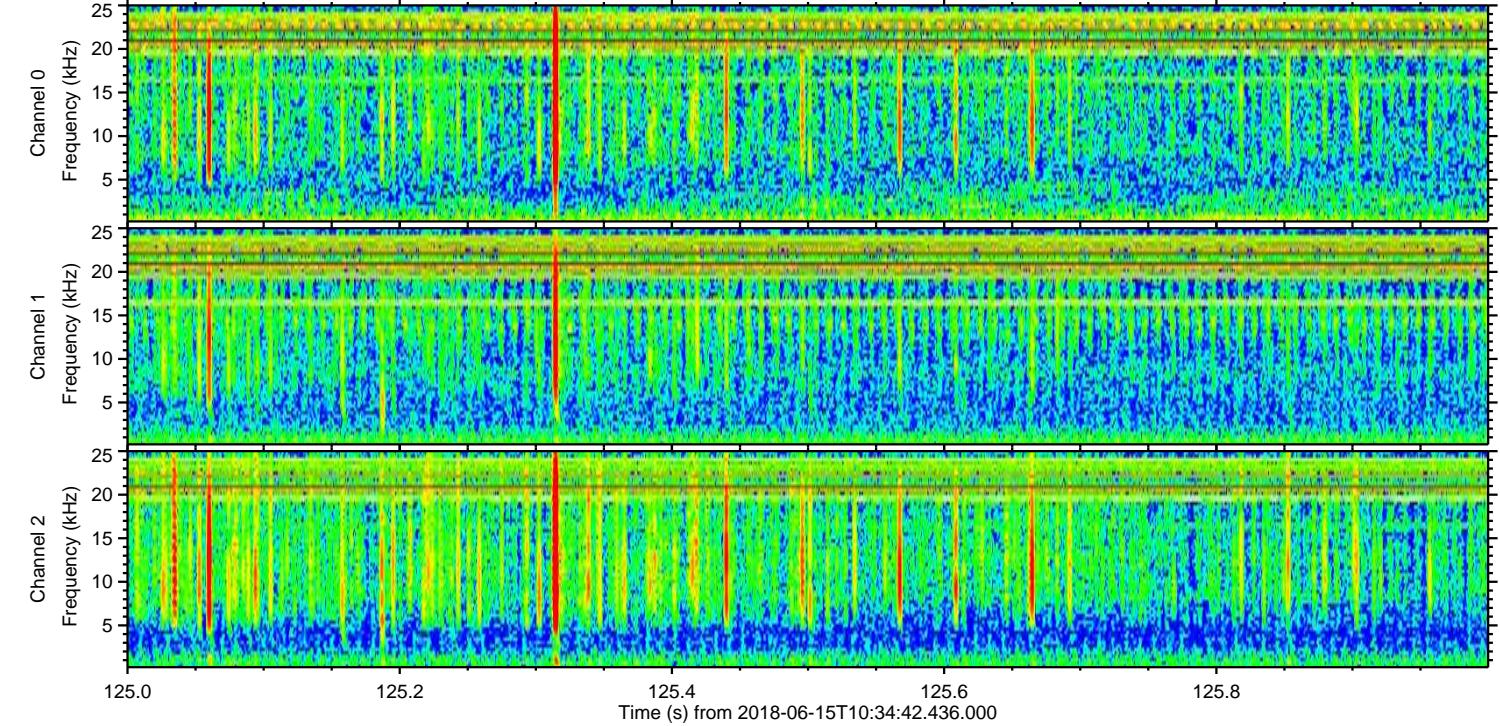
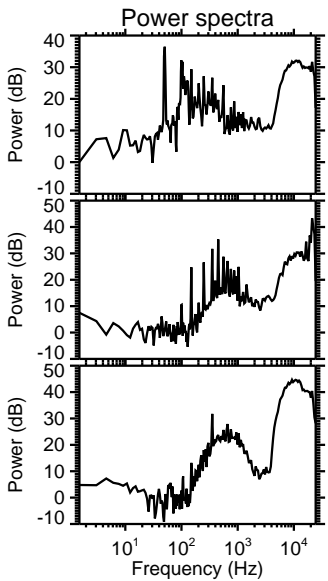
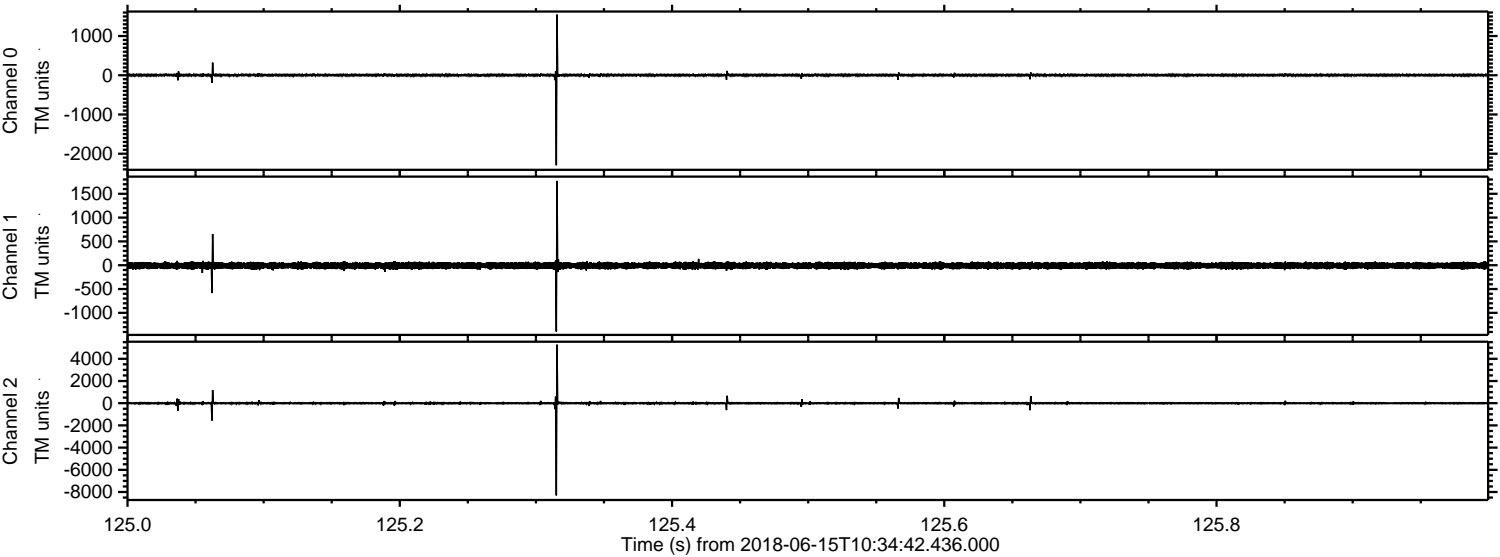


Processed Fri Jun 15 12:42:26 2018 by ELM ver.2012-10-06 from 001__elm20180615_103441__dat00.bin

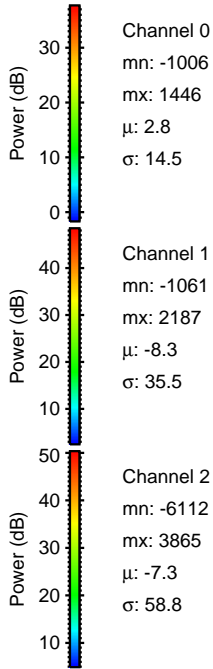
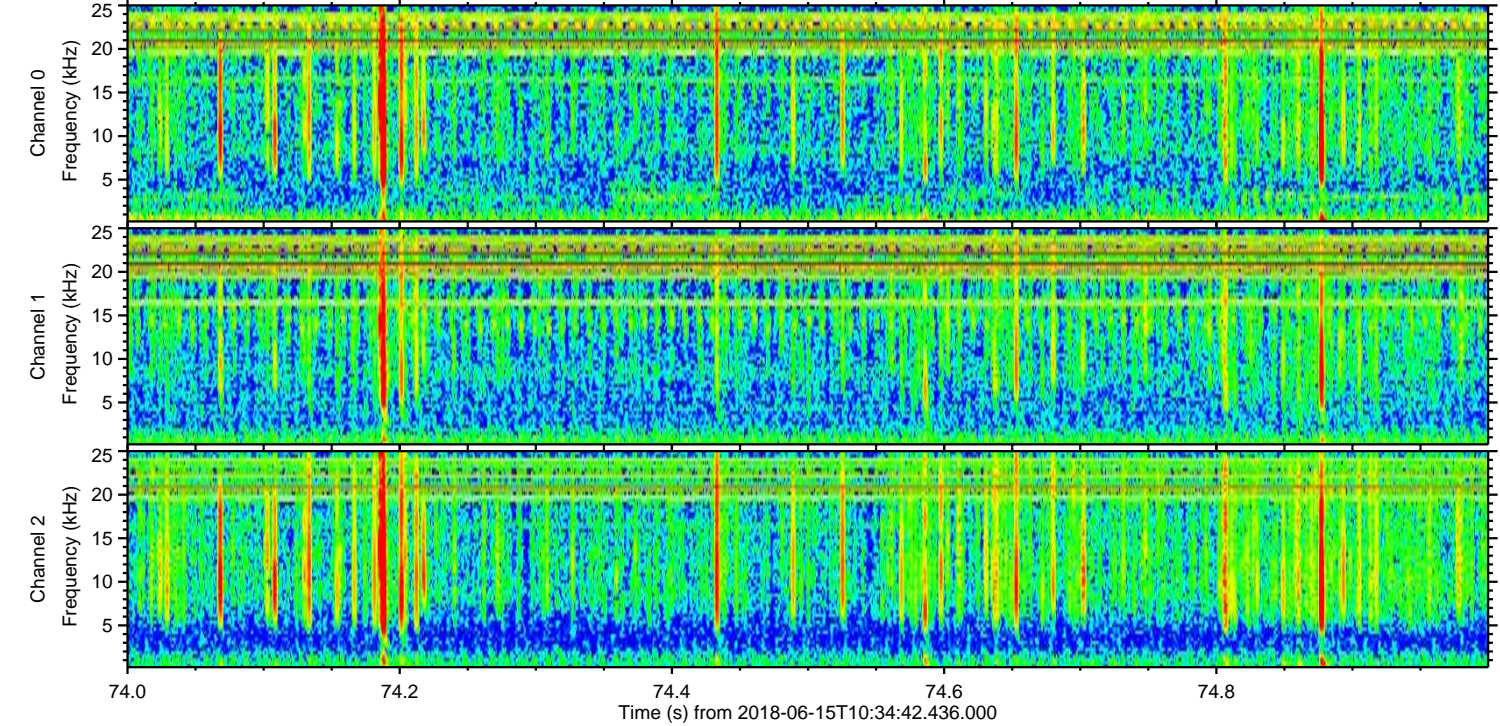
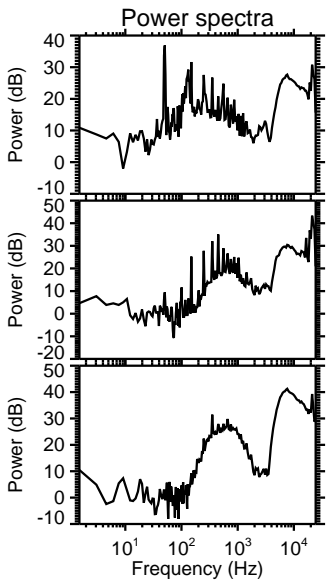
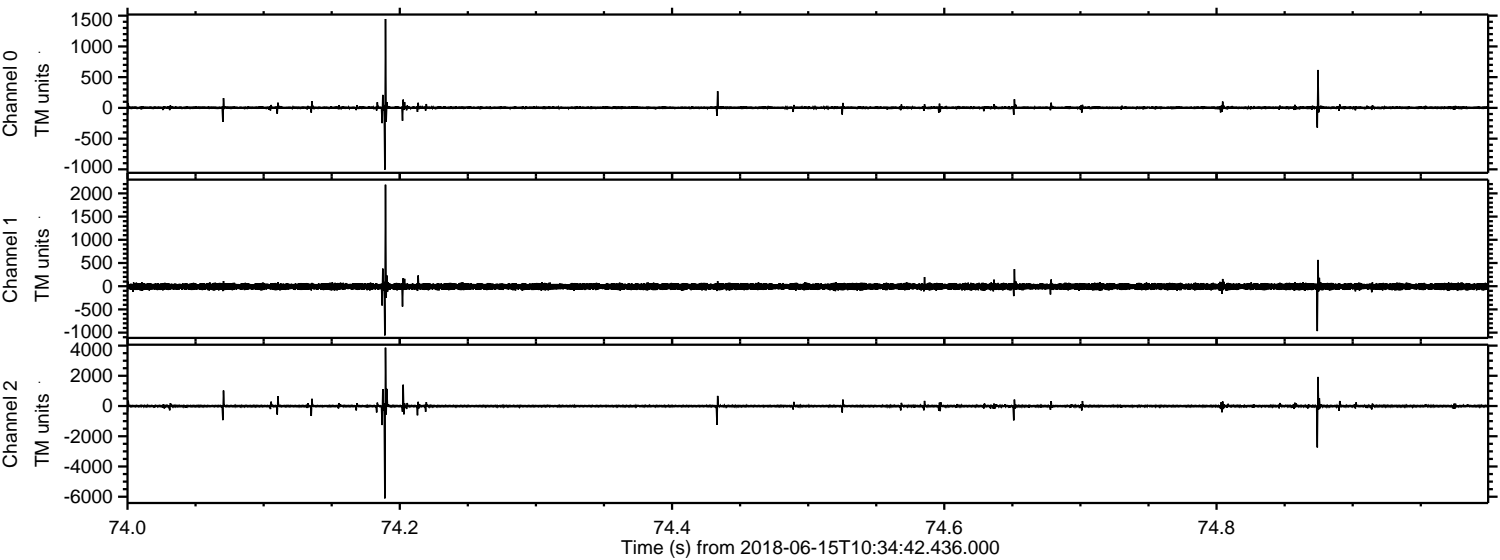


ELMAVAN 3D WAVEFORMS (Measured data sampled at 50 kHz) 51000 packets of 144 samples from 2018-06-15T10:34:42.436.000. Part 126/147

Processed Fri Jun 15 12:42:27 2018 by ELM ver.2012-10-06 from 001__elm20180615_103441__dat00.bin

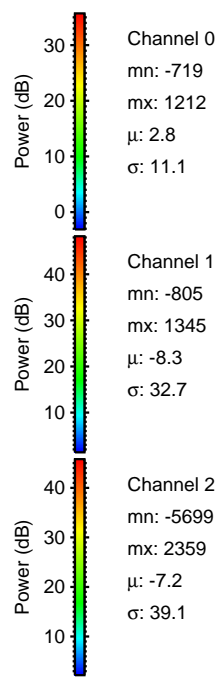
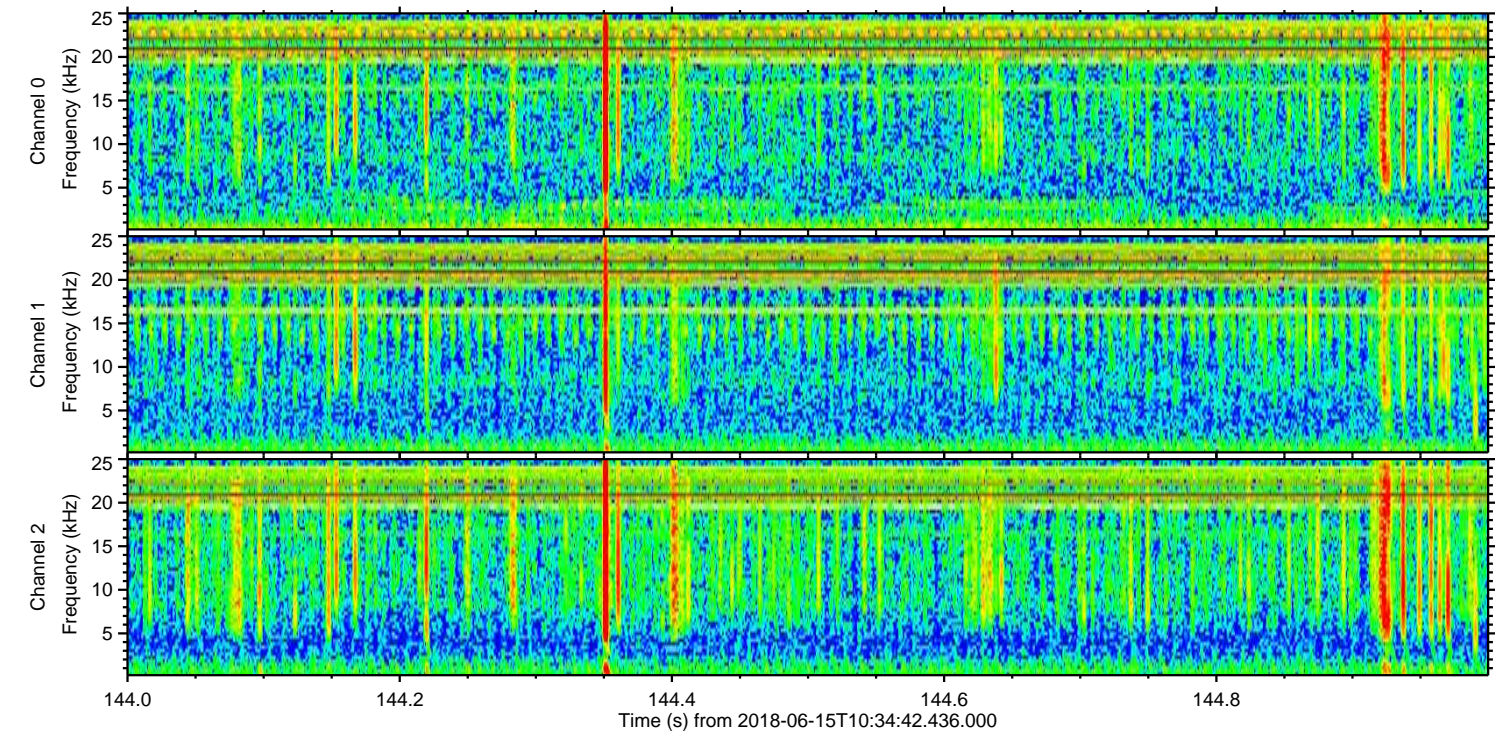
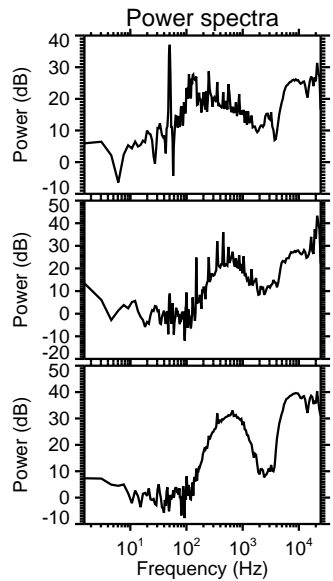
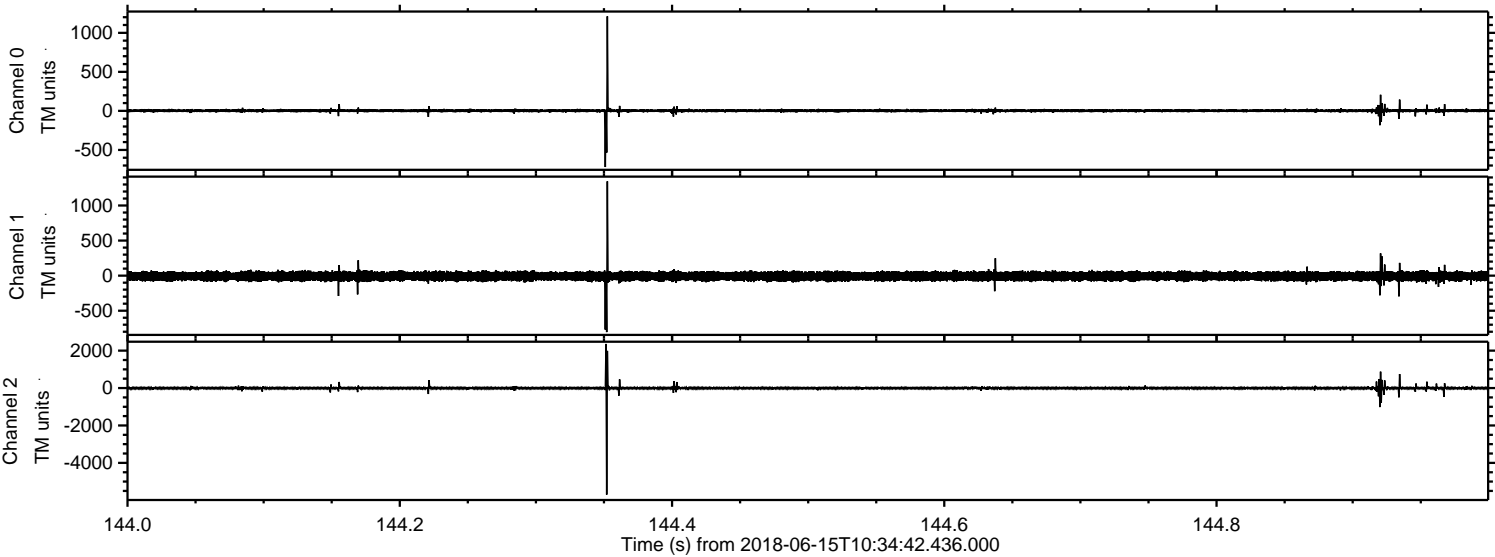


Processed Fri Jun 15 12:42:28 2018 by ELM ver.2012-10-06 from 001__elm20180615_103441__dat00.bin

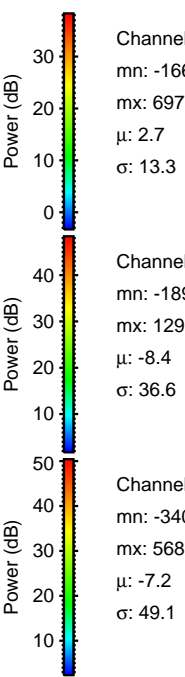
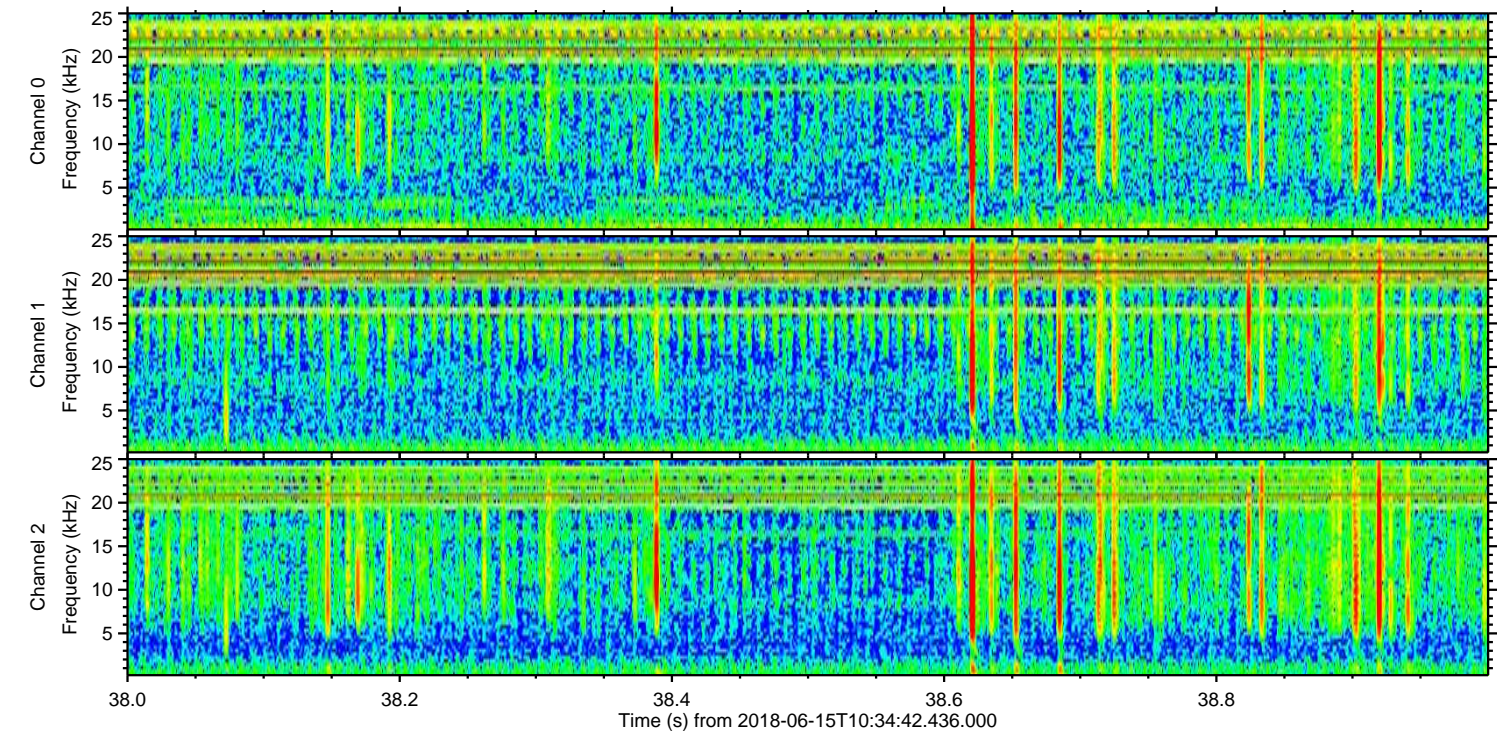
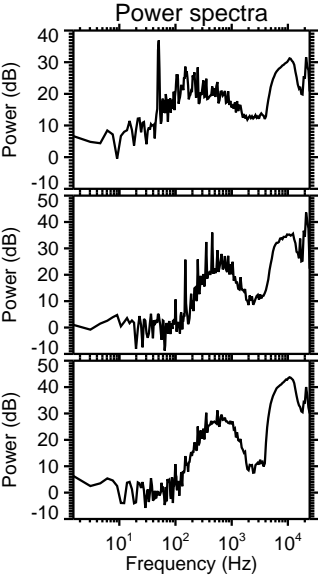
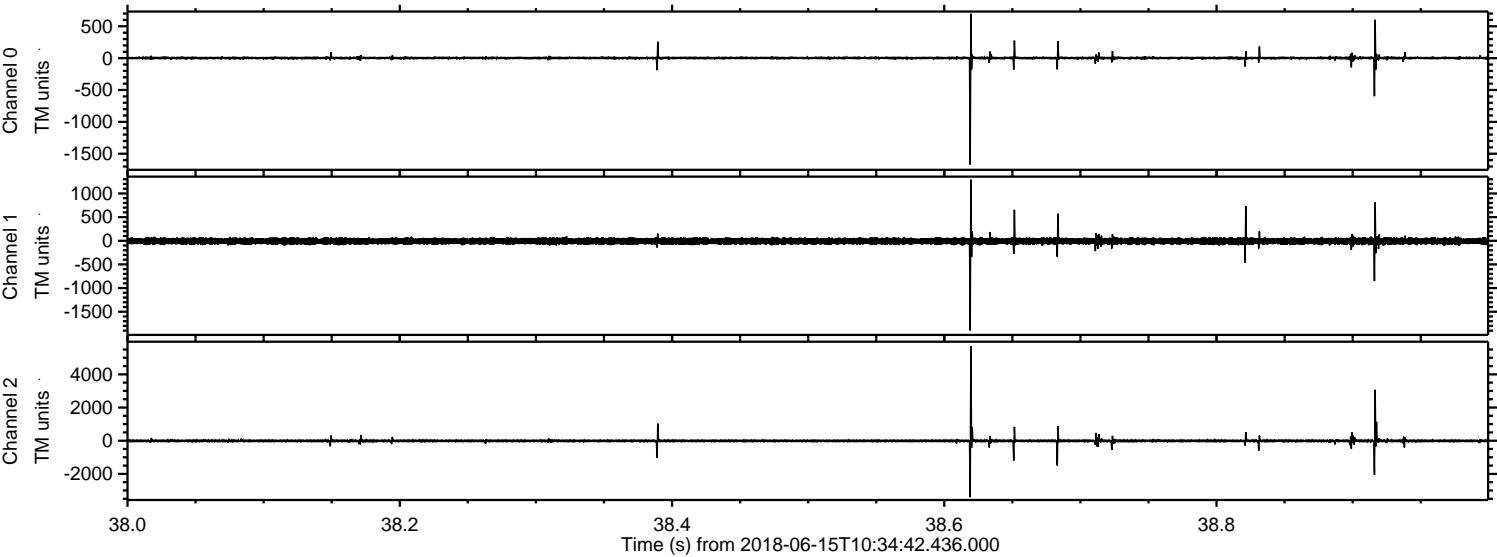


ELMAVAN 3D WAVEFORMS (Measured data sampled at 50 kHz) 51000 packets of 144 samples from 2018-06-15T10:34:42.436.000. Part 145/147

Processed Fri Jun 15 12:42:28 2018 by ELM ver.2012-10-06 from 001__elm20180615_103441__dat00.bin



Processed Fri Jun 15 12:42:29 2018 by ELM ver.2012-10-06 from 001__elm20180615_103441__dat00.bin

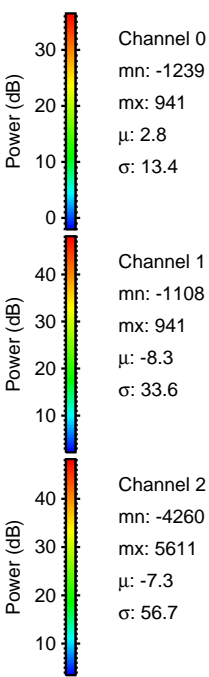
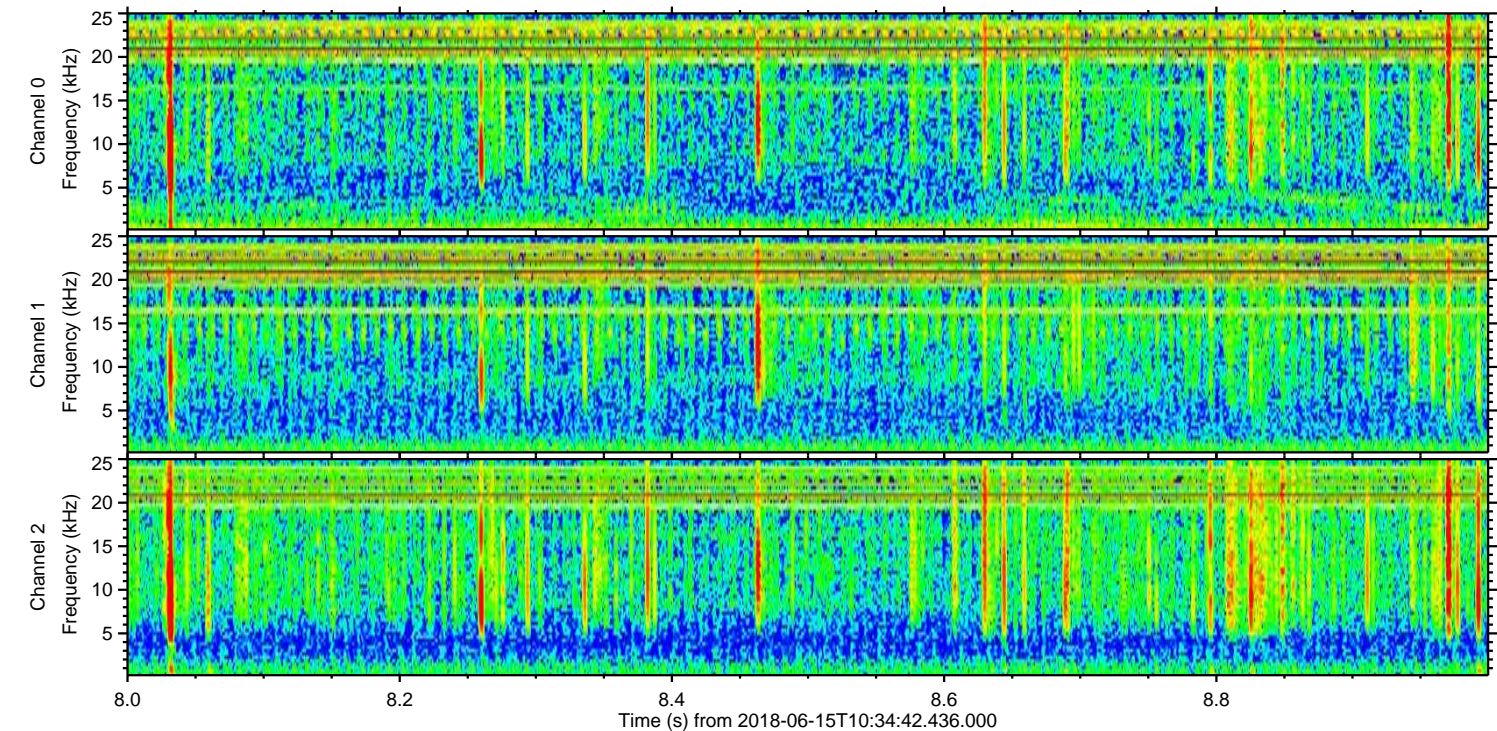
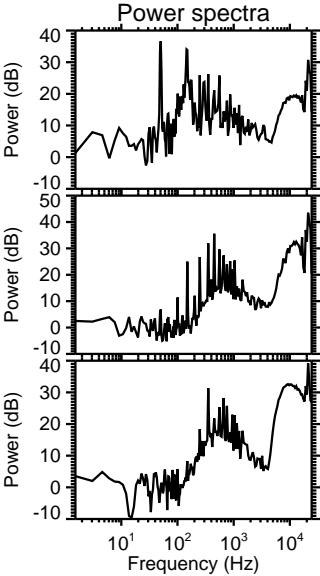
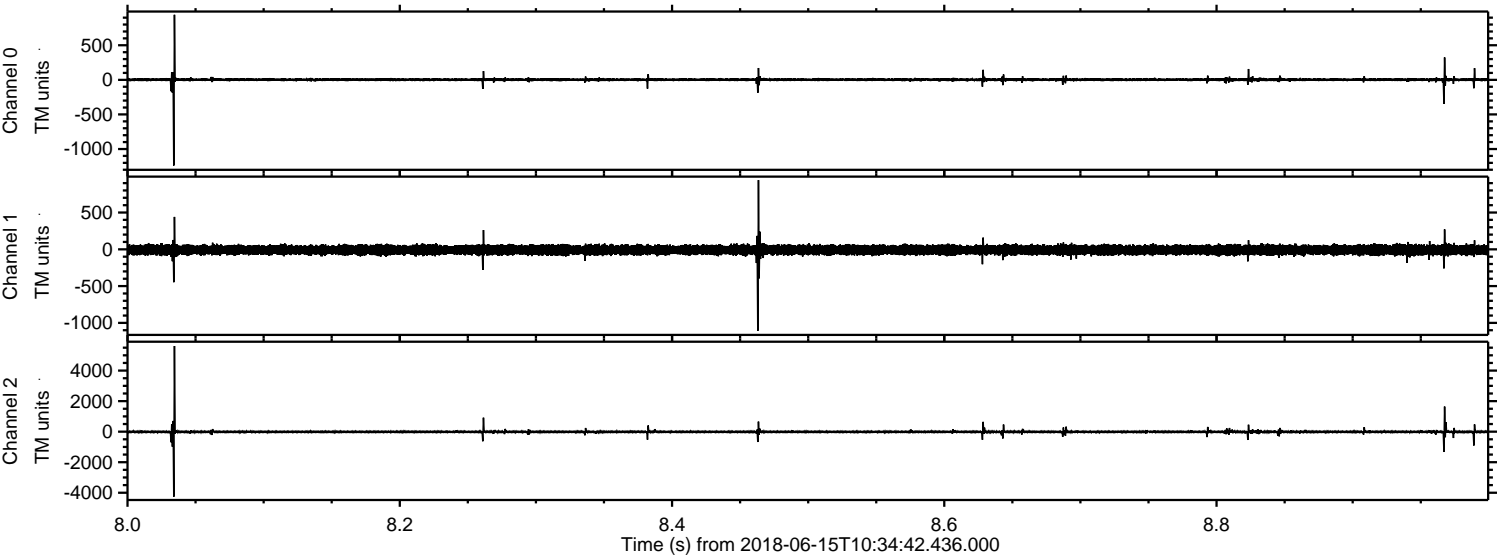


Channel 0
mn: -1669
mx: 697
 μ : 2.7
 σ : 13.3

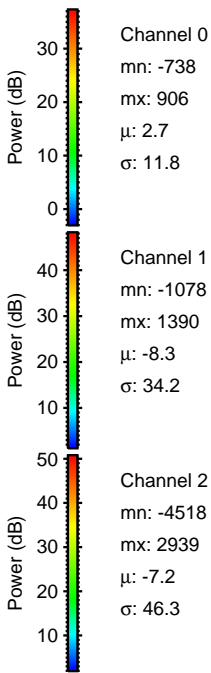
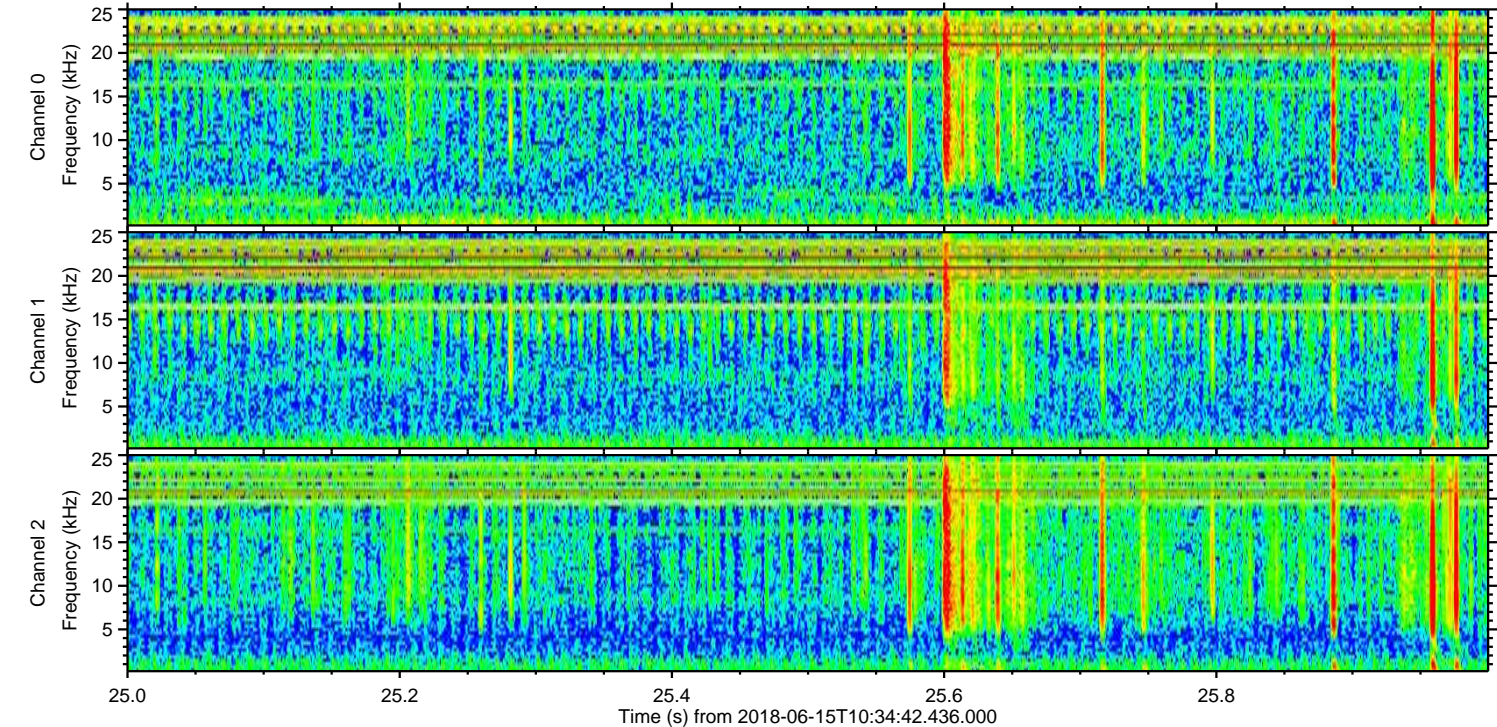
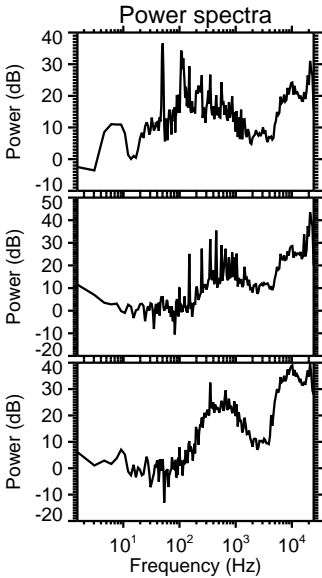
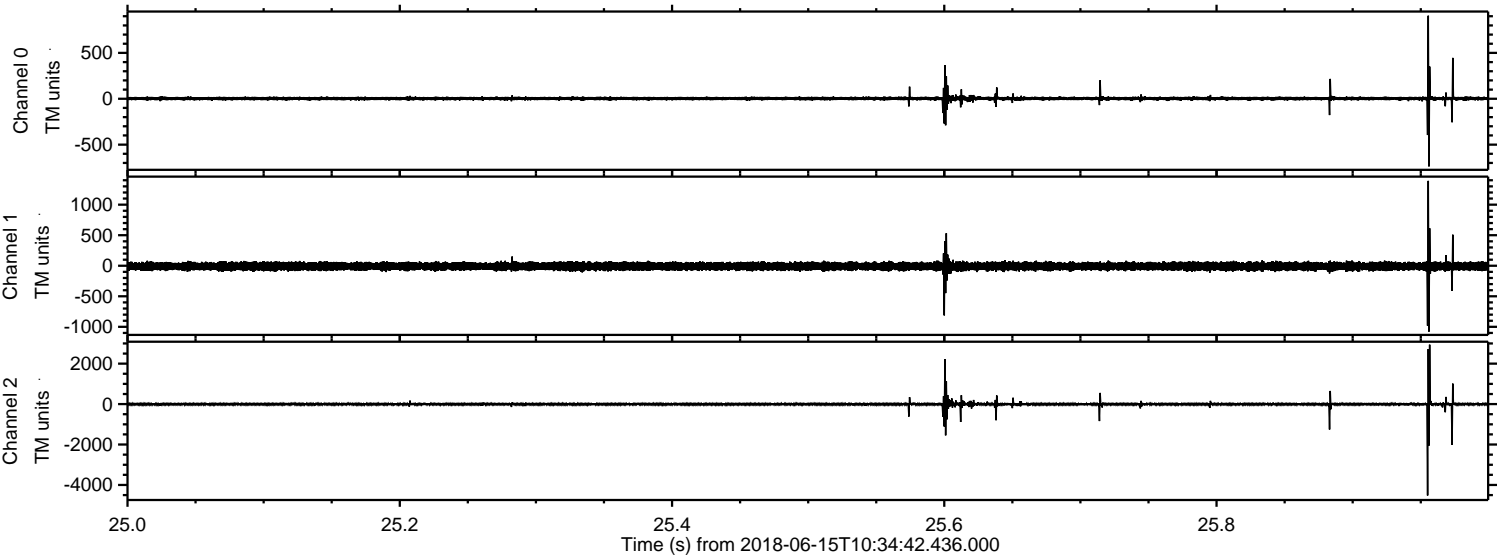
Channel 1
mn: -1895
mx: 1291
 μ : -8.4
 σ : 36.6

Channel 2
mn: -3404
mx: 5683
 μ : -7.2
 σ : 49.1

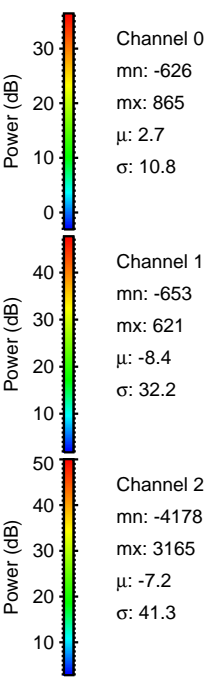
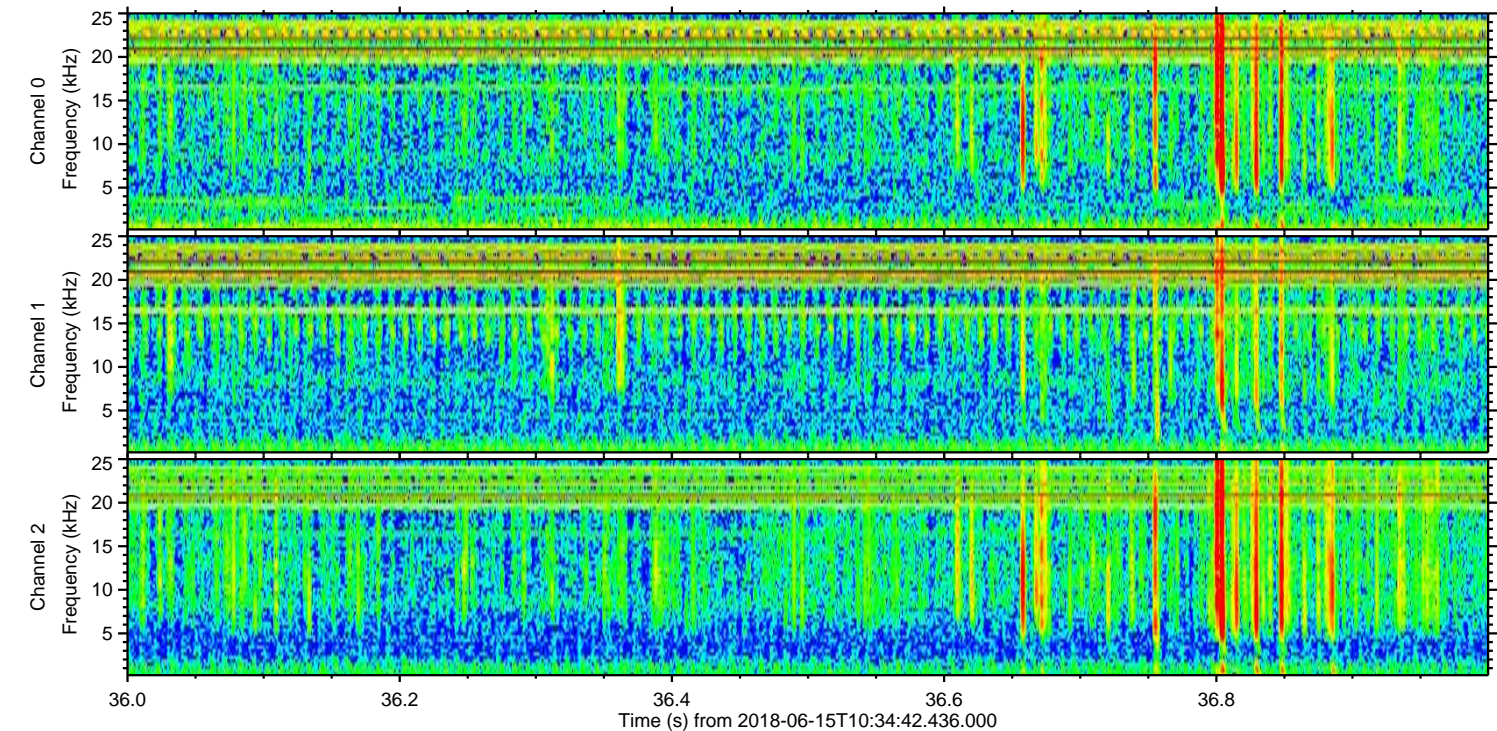
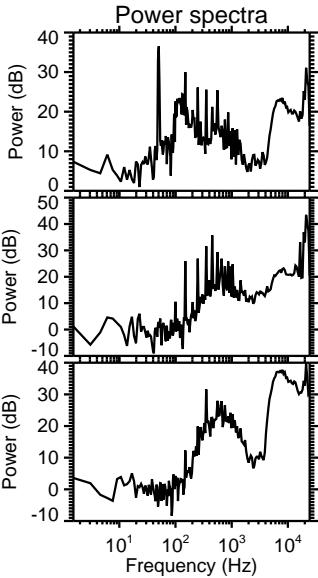
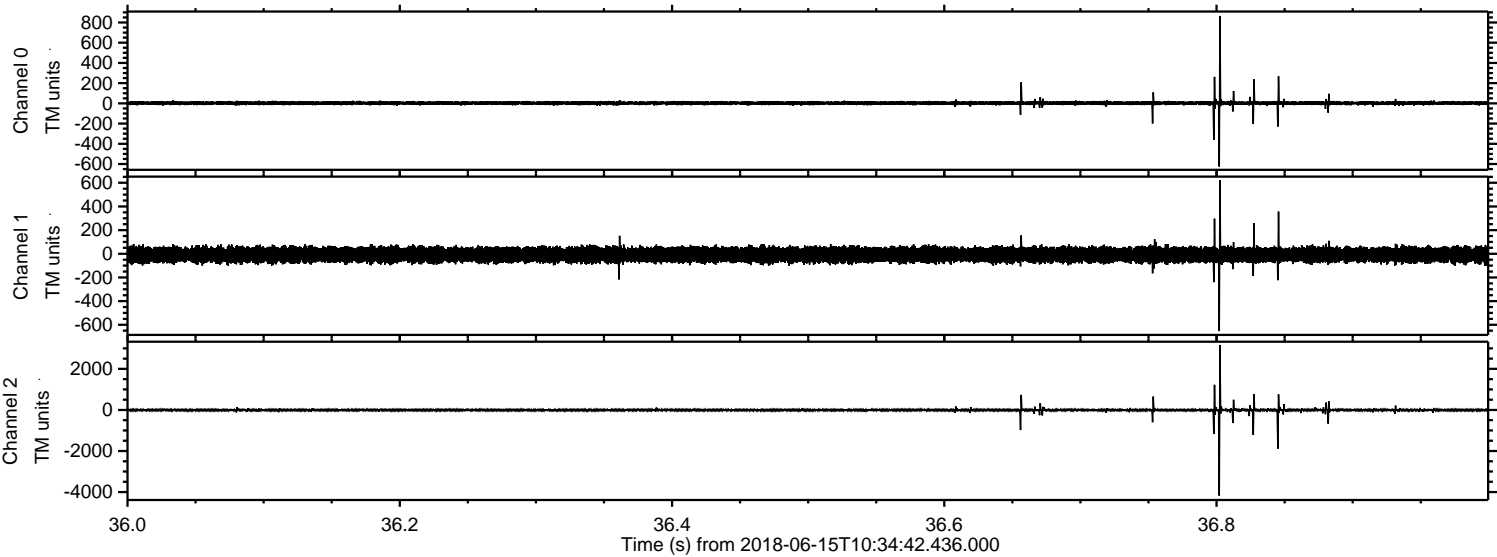
Processed Fri Jun 15 12:42:30 2018 by ELM ver.2012-10-06 from 001__elm20180615_103441__dat00.bin



Processed Fri Jun 15 12:42:30 2018 by ELM ver.2012-10-06 from 001__elm20180615_103441__dat00.bin



Processed Fri Jun 15 12:42:31 2018 by ELM ver.2012-10-06 from 001__elm20180615_103441__dat00.bin



Channel 0
mn: -626
mx: 865
 μ : 2.7
 σ : 10.8

Channel 1
mn: -653
mx: 621
 μ : -8.4
 σ : 32.2

Channel 2
mn: -4178
mx: 3165
 μ : -7.2
 σ : 41.3

Processed Fri Jun 15 12:42:32 2018 by ELM ver.2012-10-06 from 001__elm20180615_103441__dat00.bin

