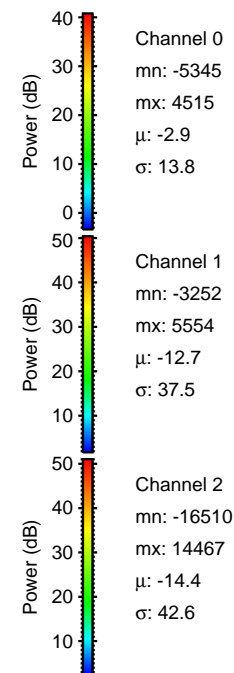
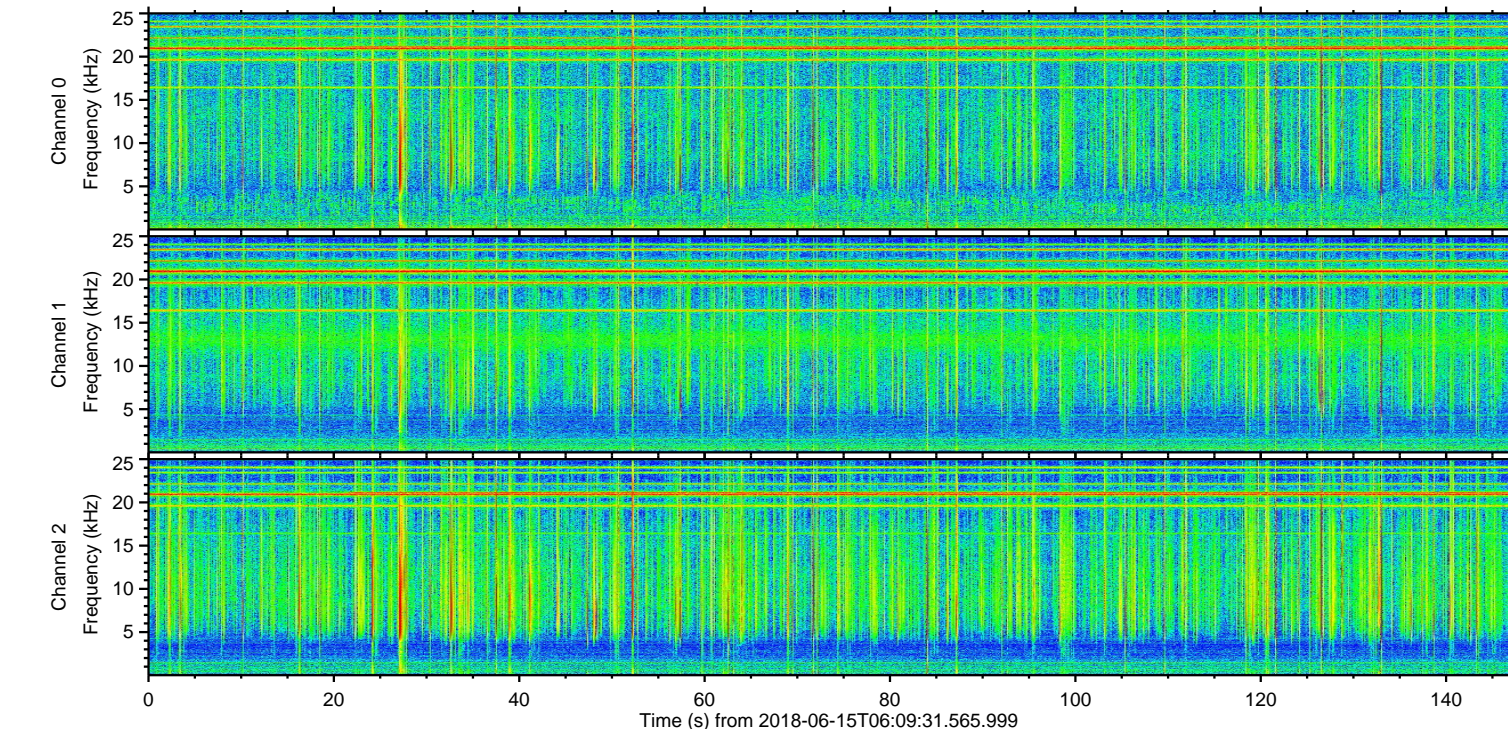
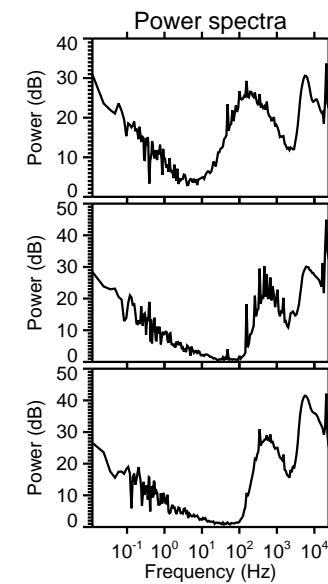
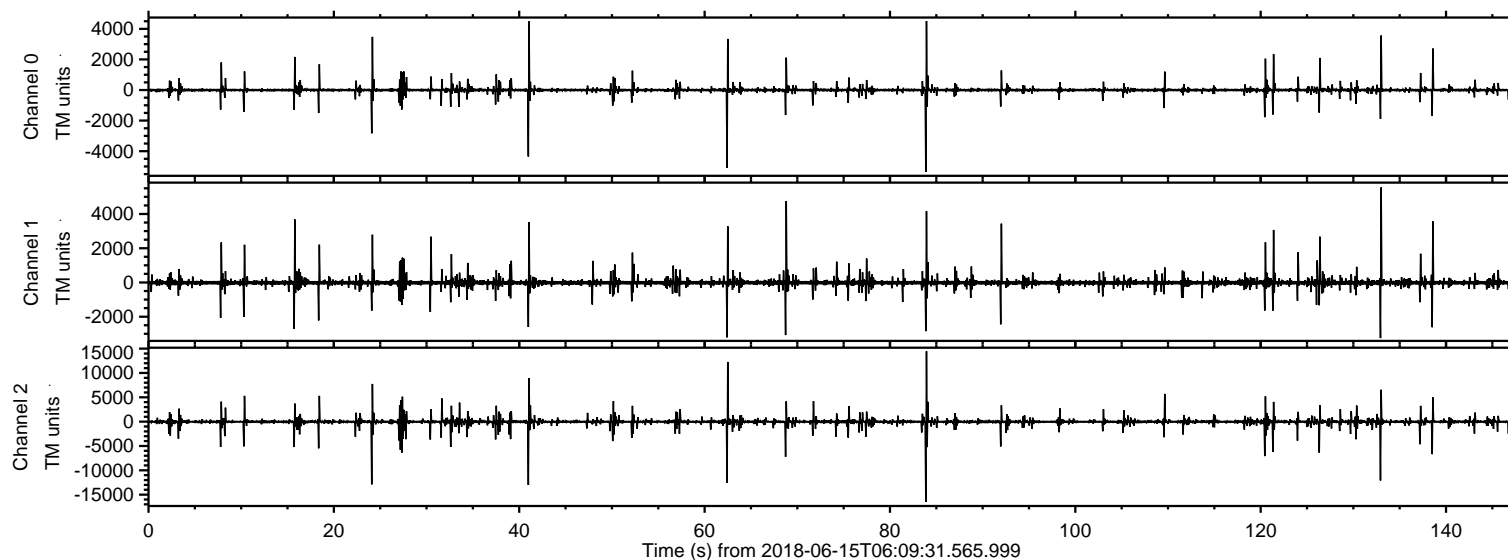
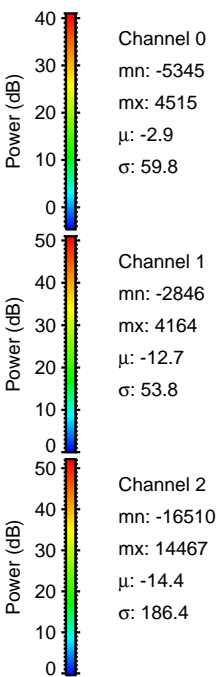
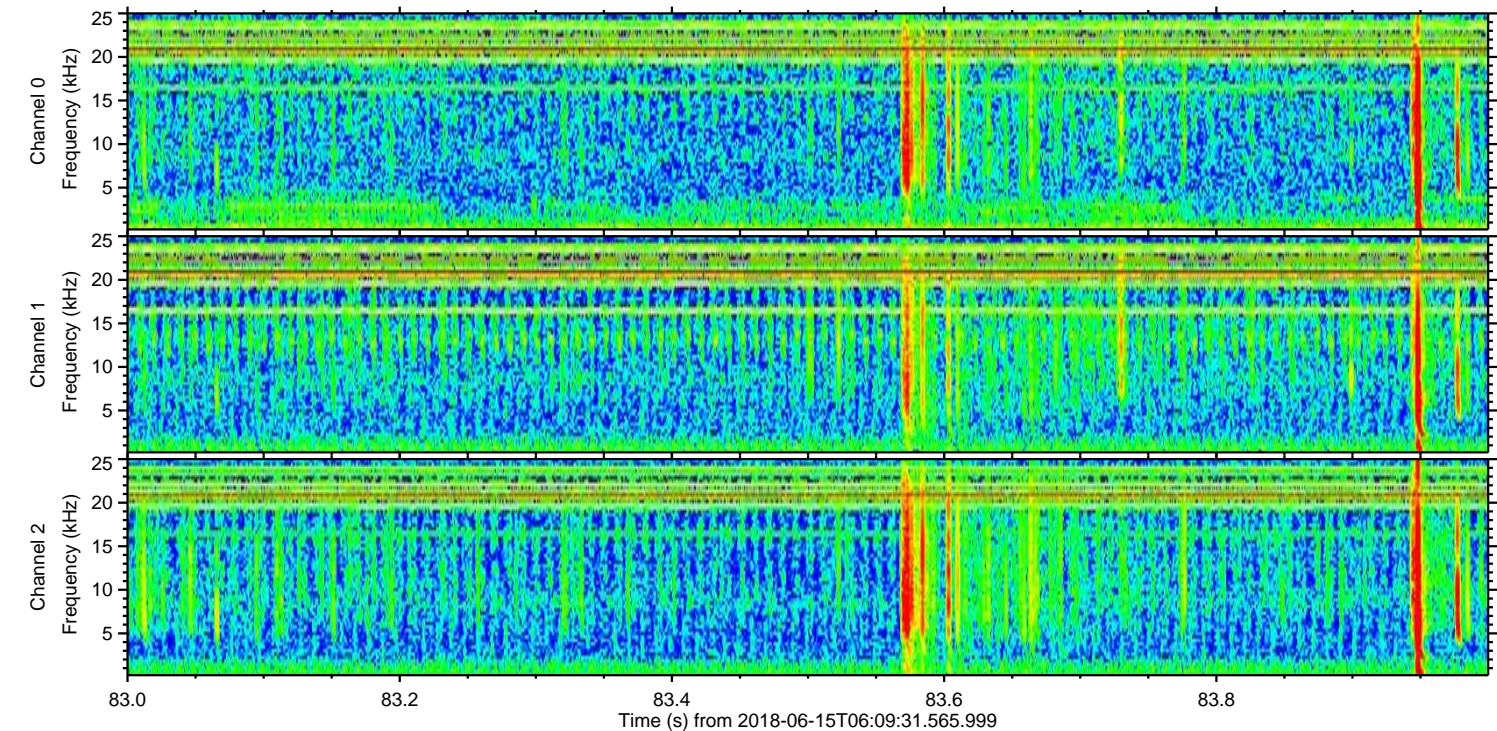
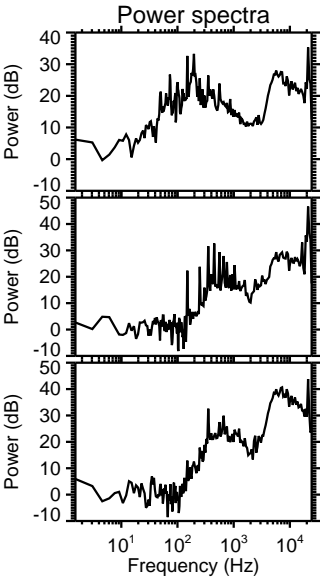
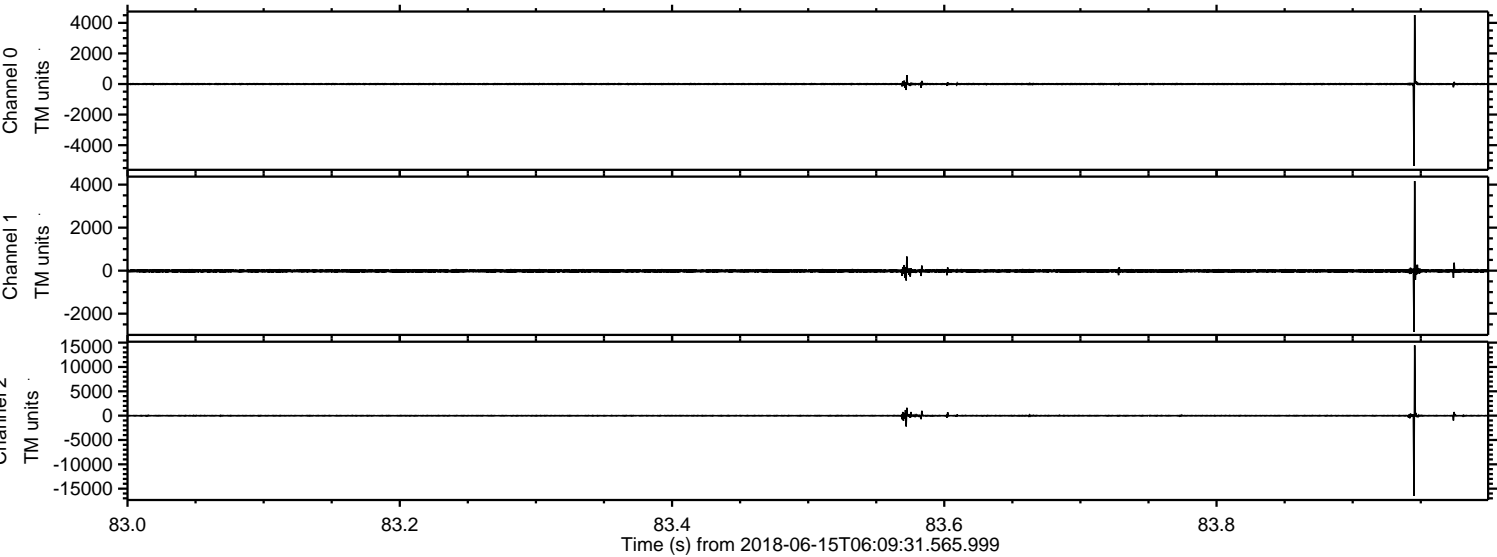


ELMAVAN 3D WAVEFORMS (Measured data sampled at 50 kHz) 51000 packets of 144 samples from 2018-06-15T06:09:31.565.999.

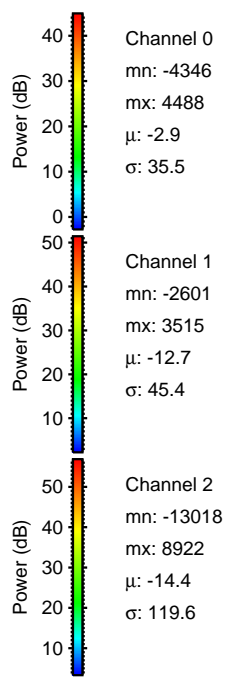
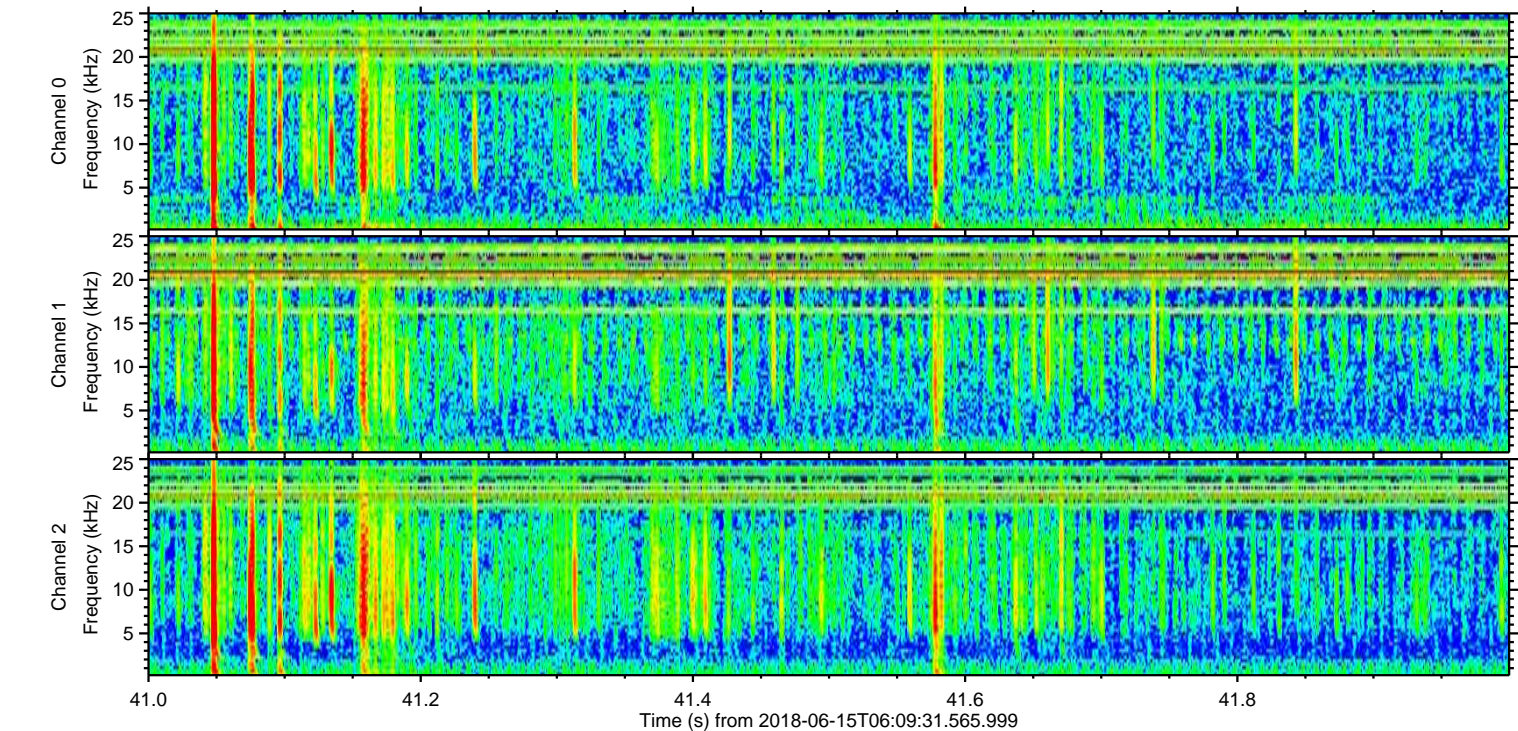
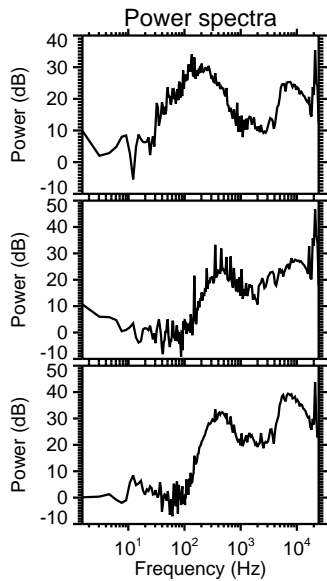
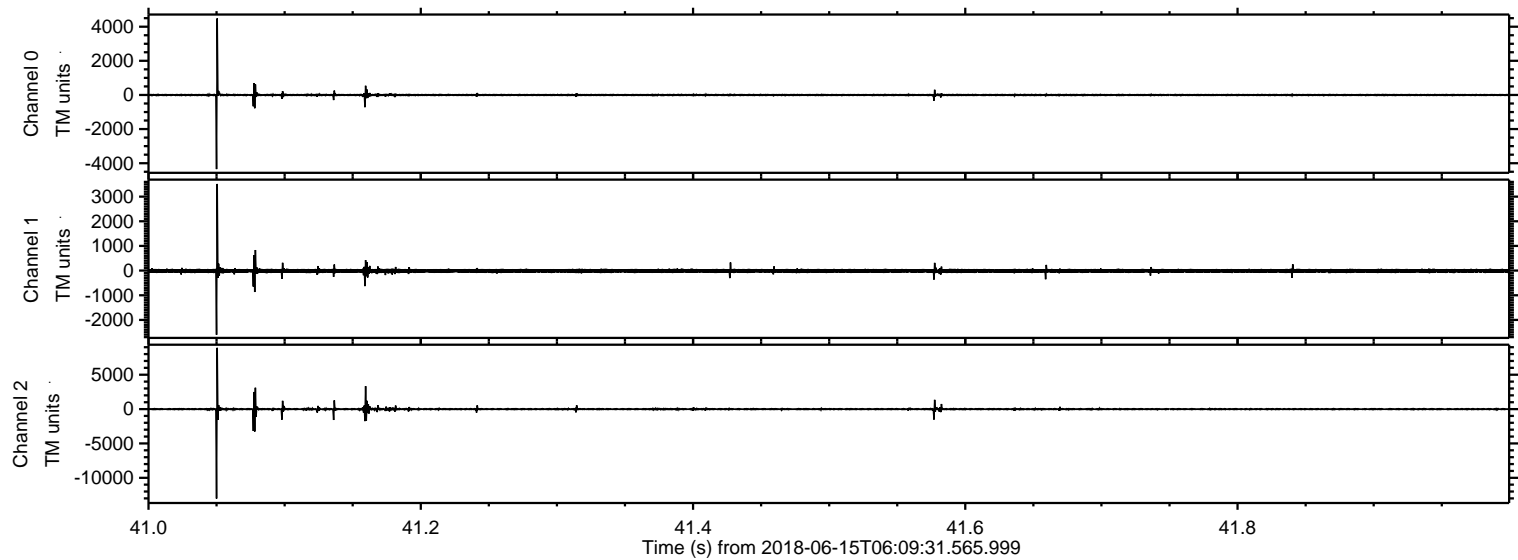
Processed Fri Jun 15 08:17:14 2018 by ELM ver.2012-10-06 from 001__elm20180615_060930__dat00.bin



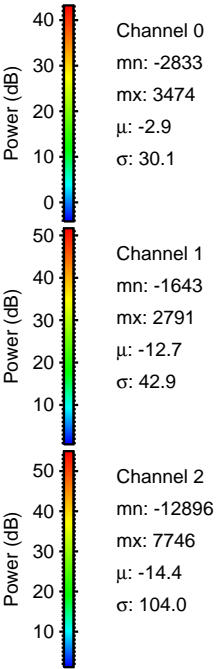
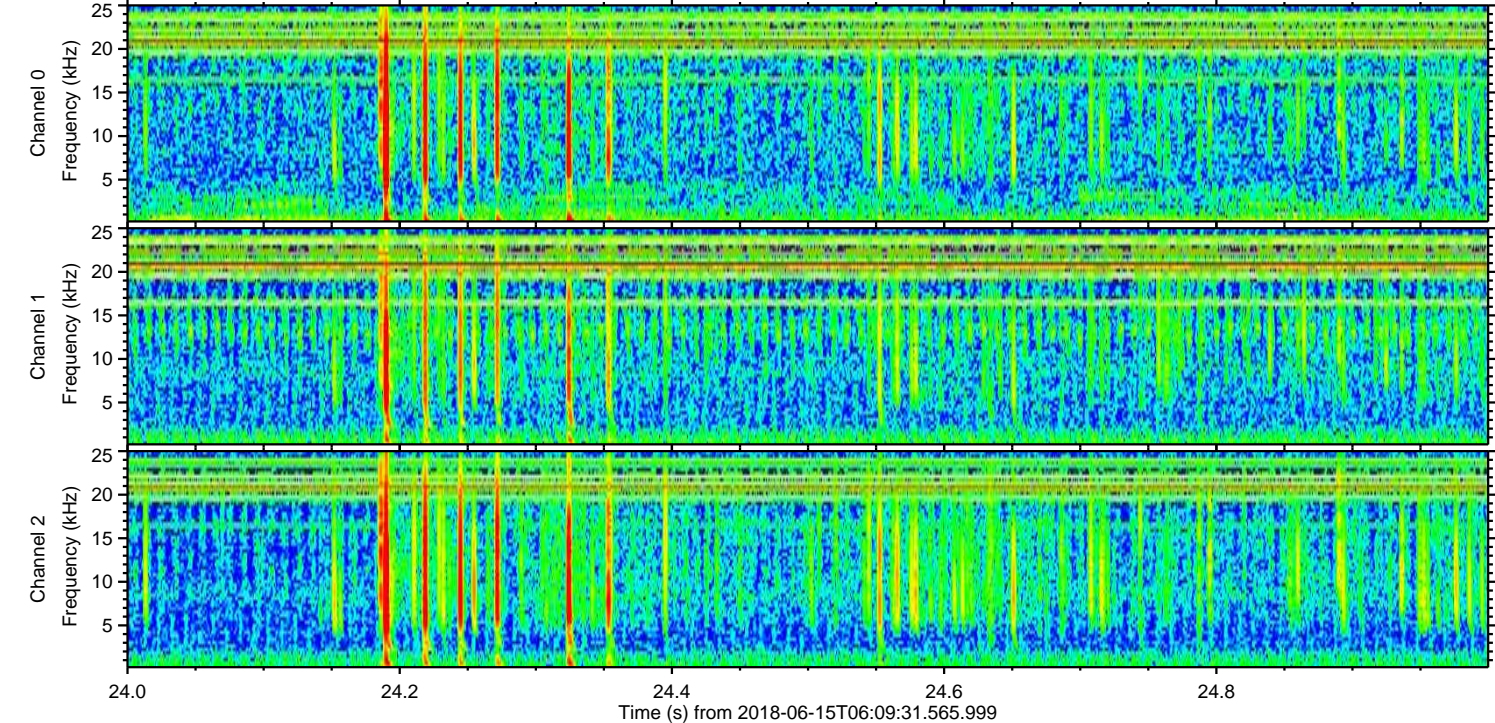
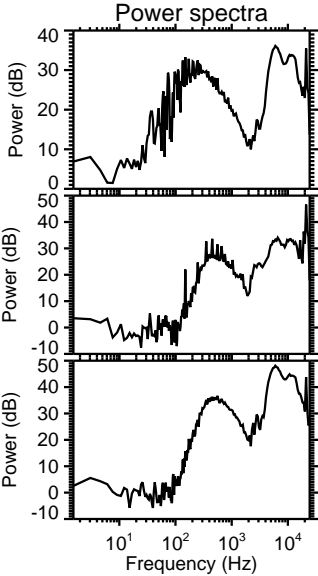
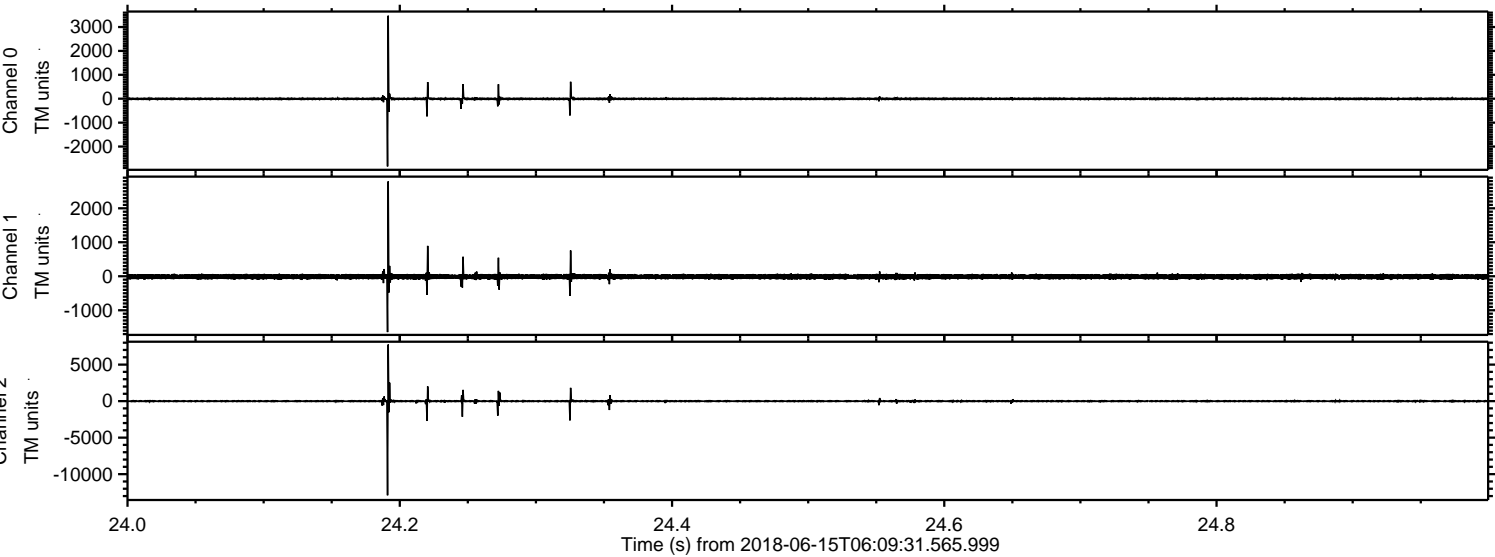
Processed Fri Jun 15 08:17:20 2018 by ELM ver.2012-10-06 from 001__elm20180615_060930__dat00.bin



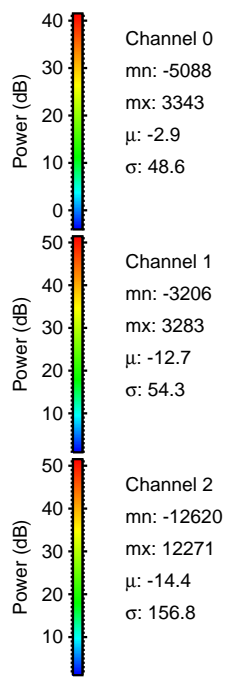
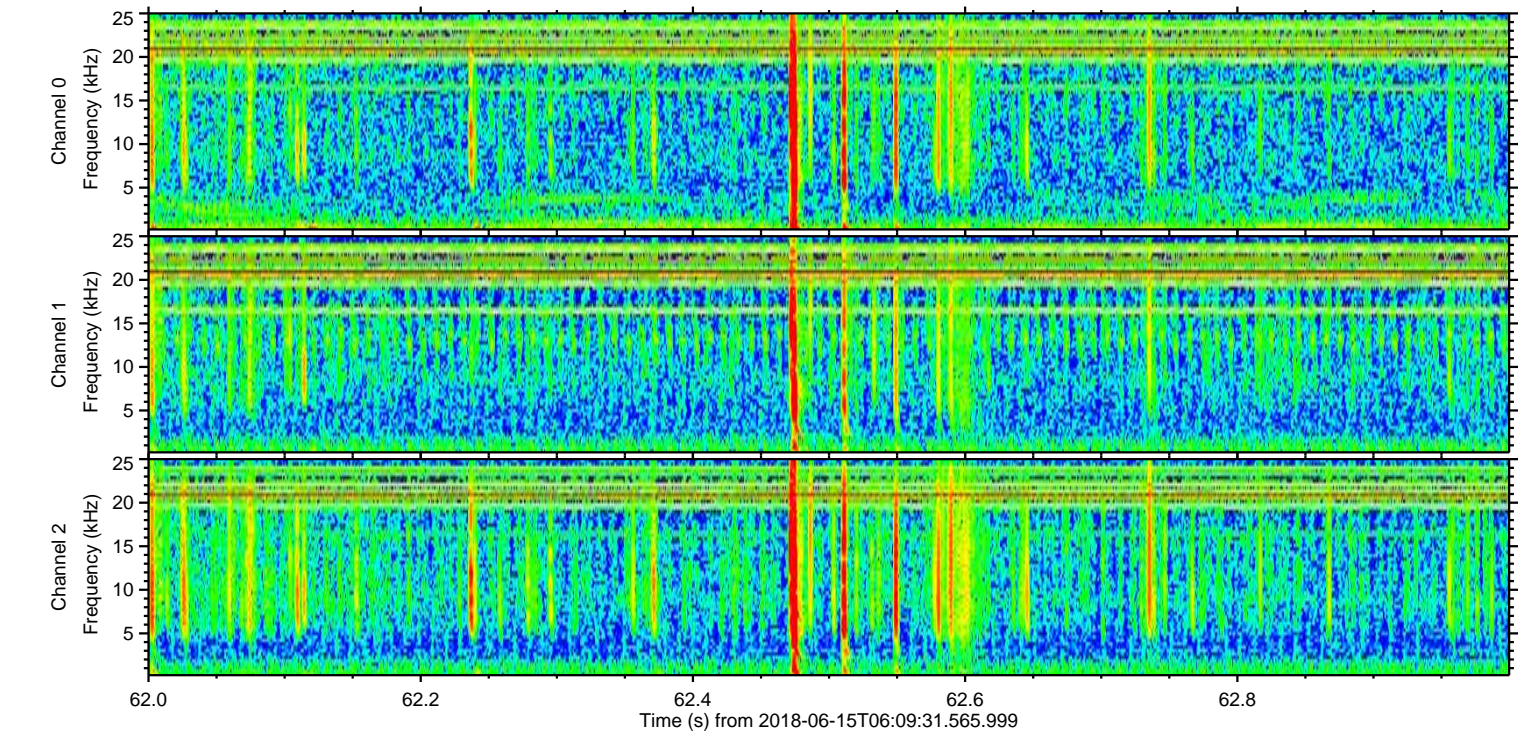
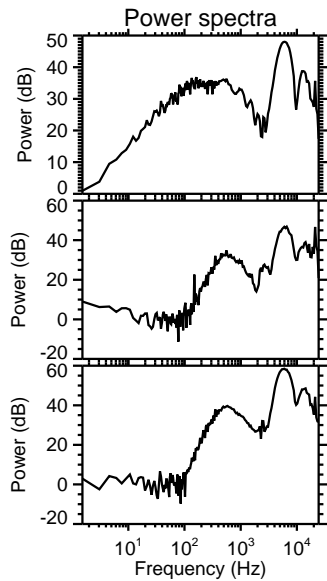
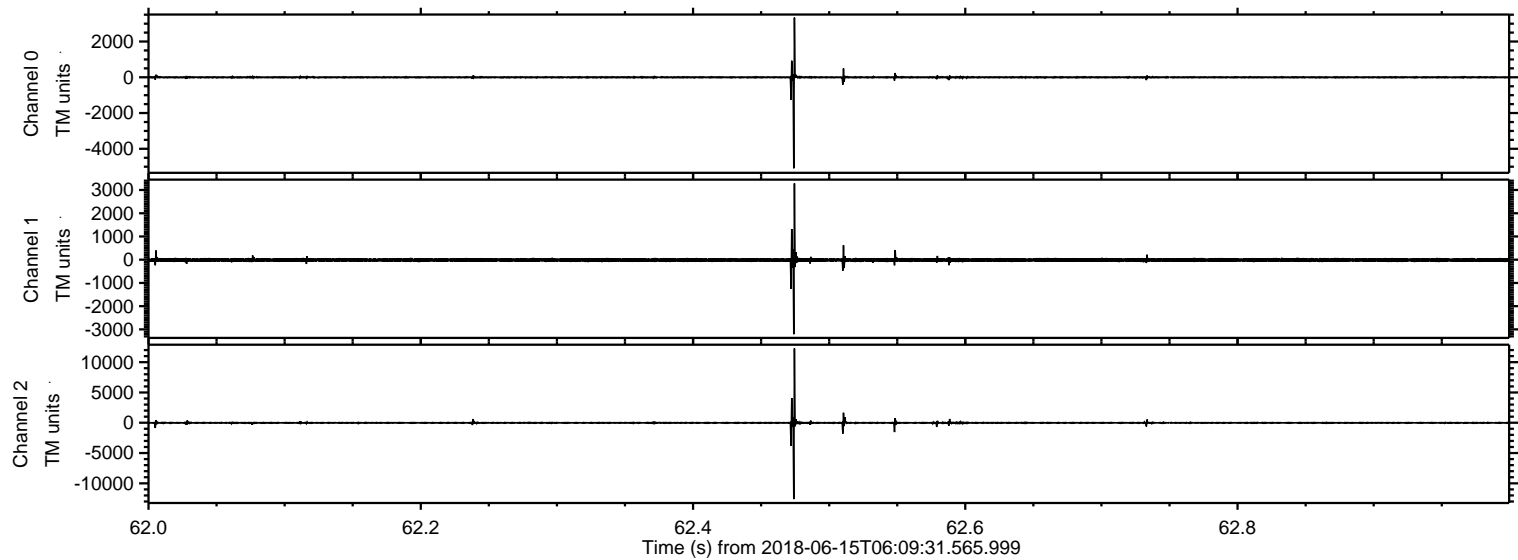
Processed Fri Jun 15 08:17:21 2018 by ELM ver.2012-10-06 from 001__elm20180615_060930__dat00.bin



Processed Fri Jun 15 08:17:22 2018 by ELM ver.2012-10-06 from 001__elm20180615_060930__dat00.bin

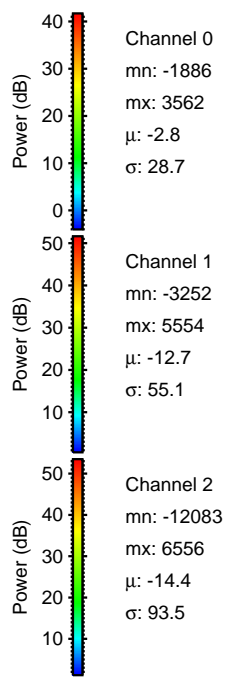
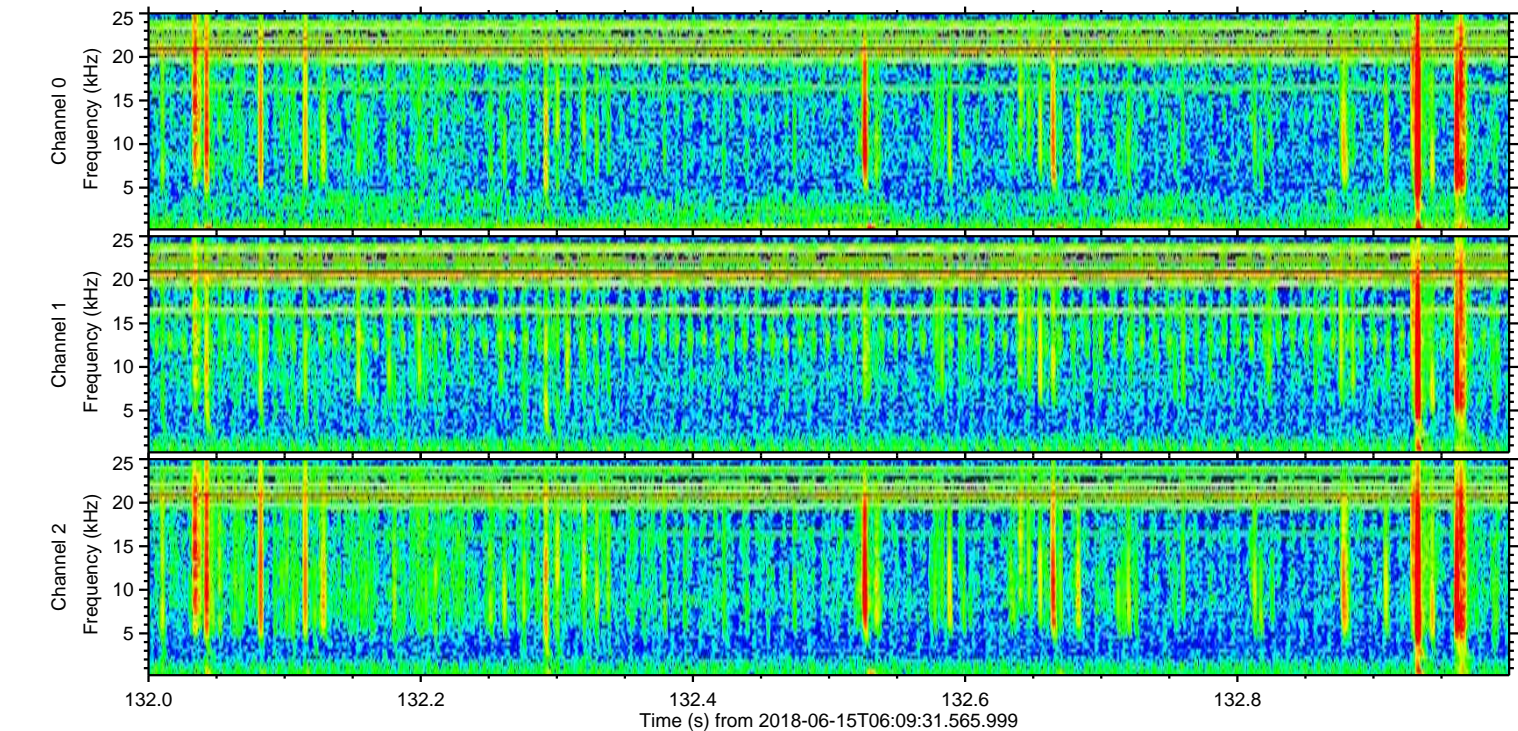
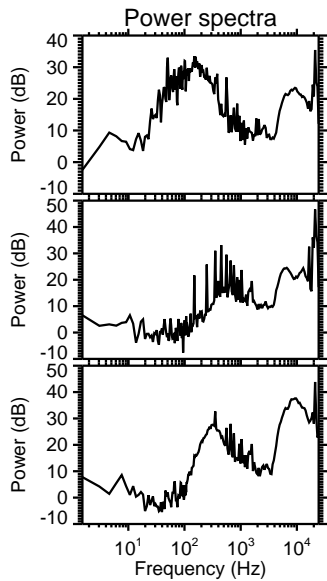
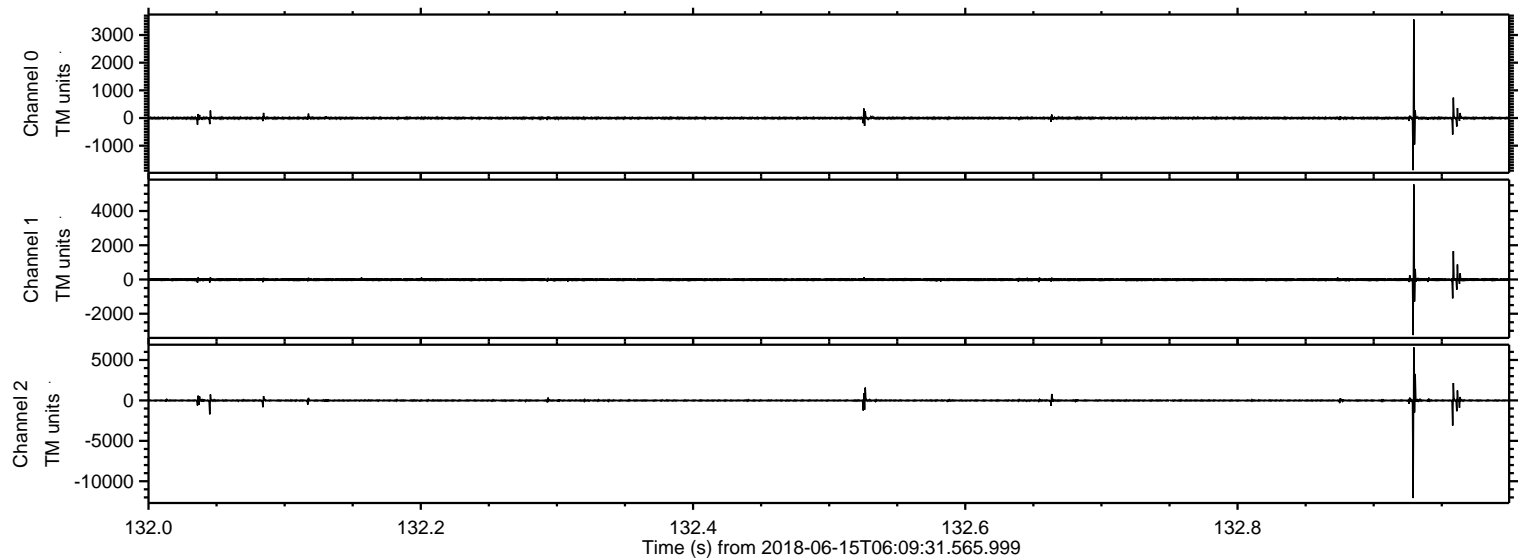


Processed Fri Jun 15 08:17:23 2018 by ELM ver.2012-10-06 from 001__elm20180615_060930__dat00.bin

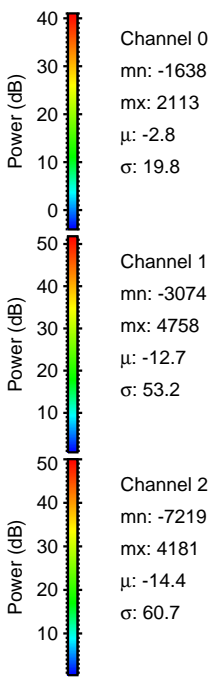
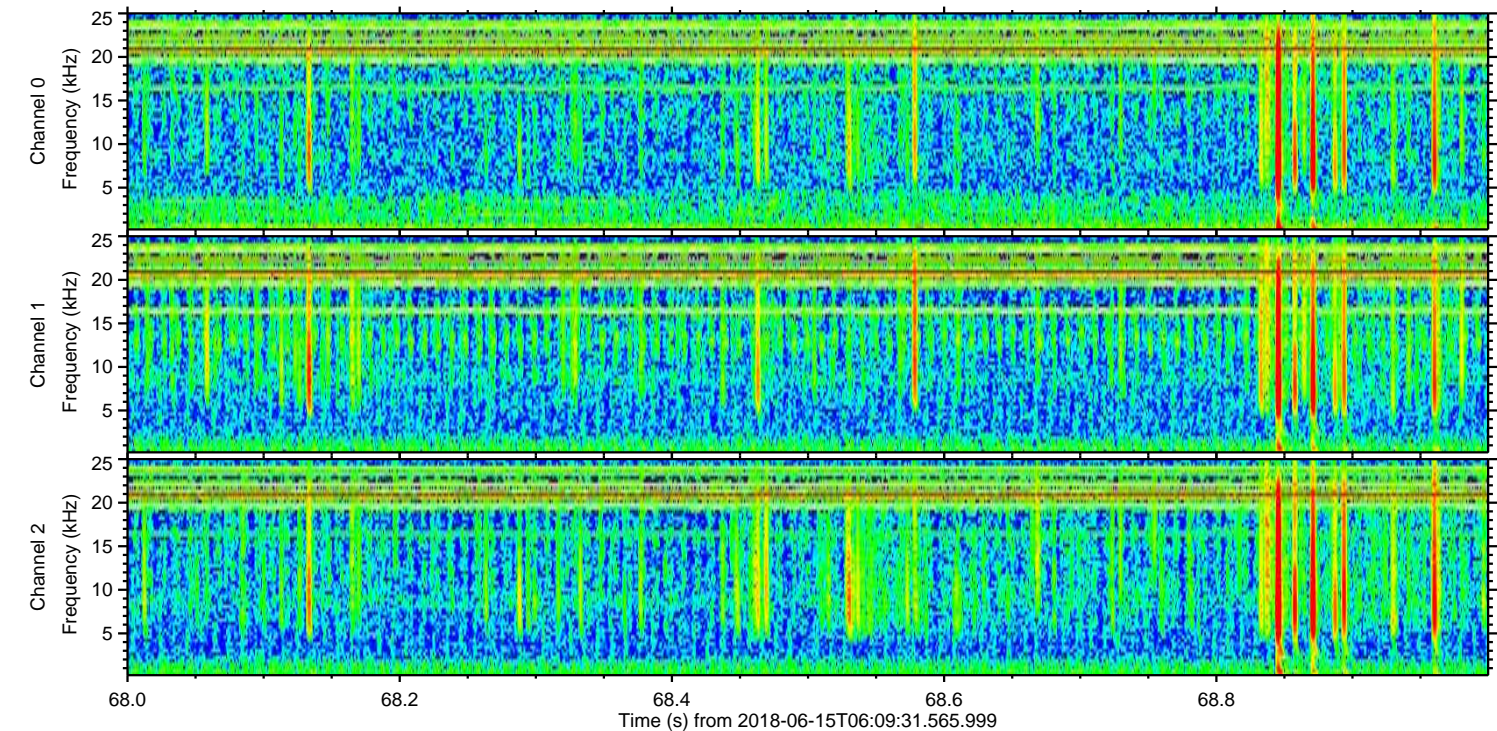
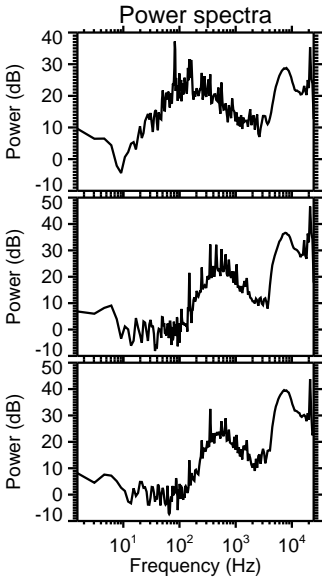
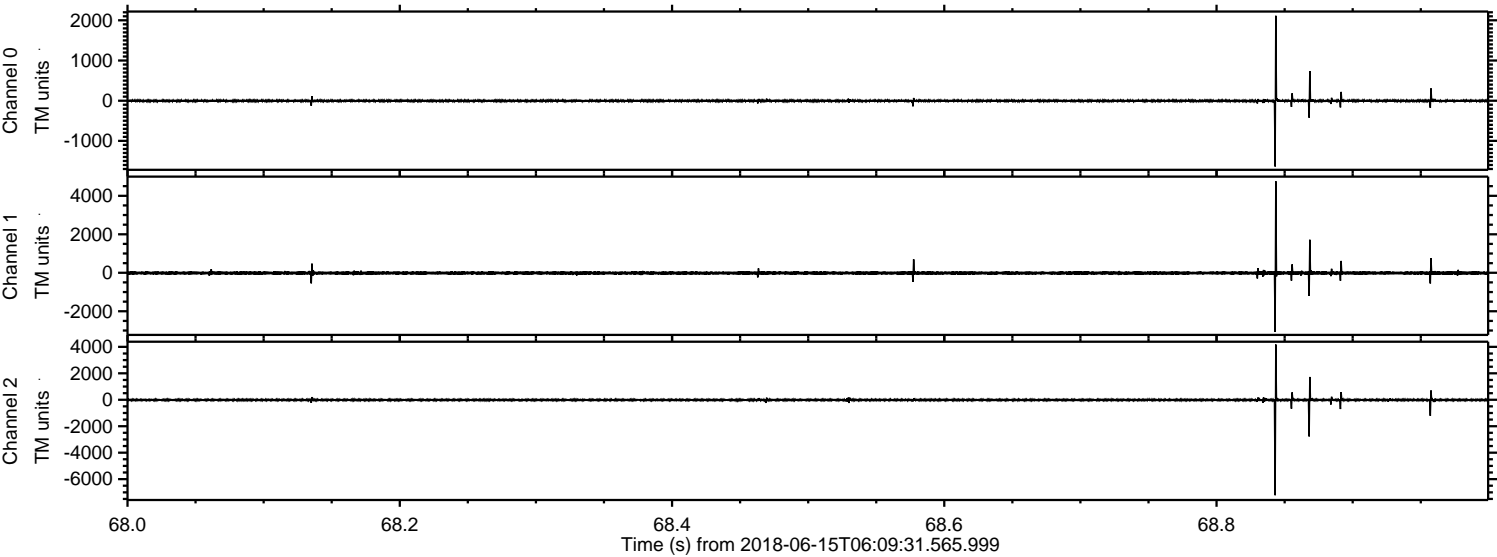


ELMAVAN 3D WAVEFORMS (Measured data sampled at 50 kHz) 51000 packets of 144 samples from 2018-06-15T06:09:31.565.999. Part 133/147

Processed Fri Jun 15 08:17:23 2018 by ELM ver.2012-10-06 from 001__elm20180615_060930__dat00.bin

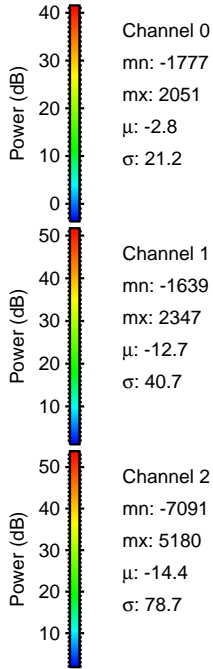
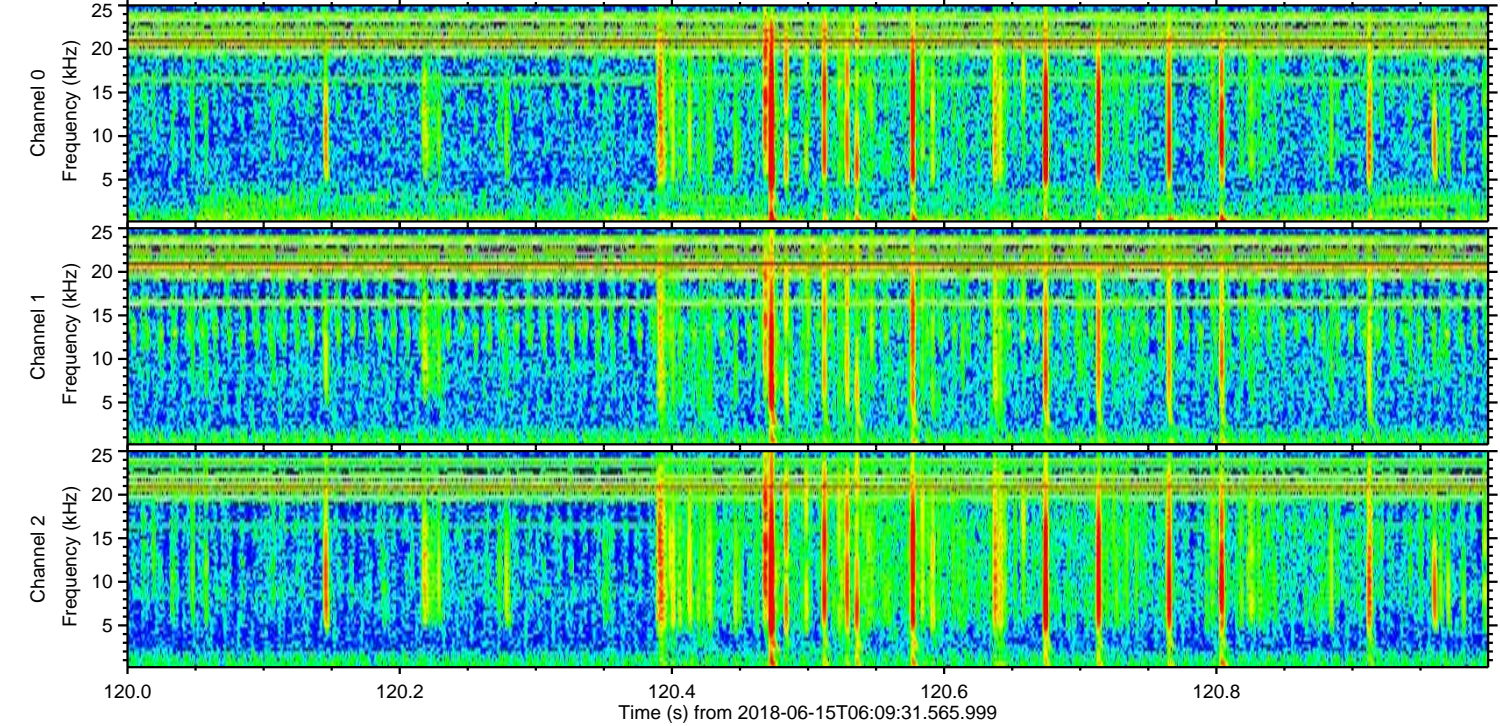
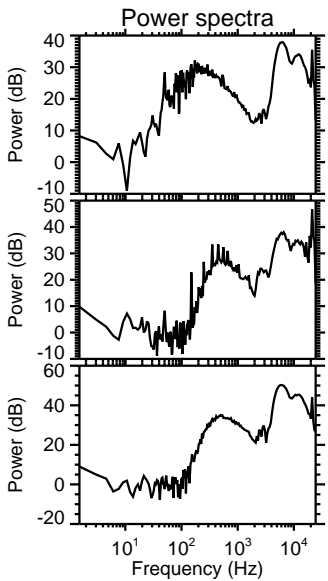
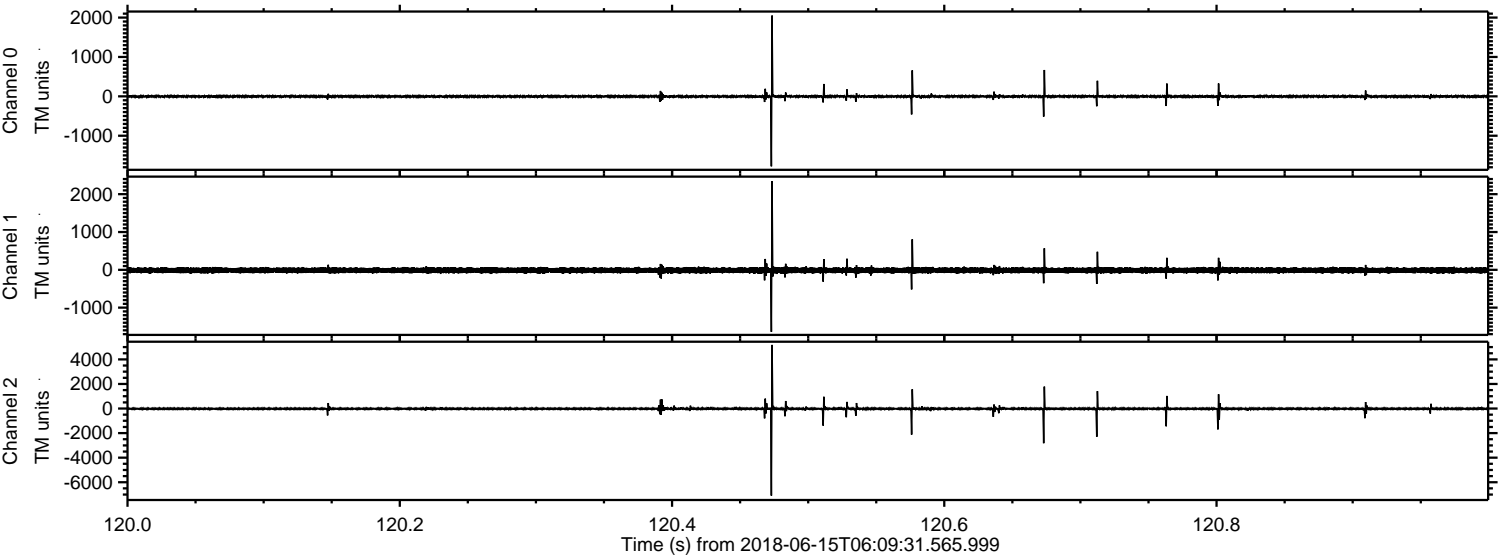


Processed Fri Jun 15 08:17:24 2018 by ELM ver.2012-10-06 from 001__elm20180615_060930__dat00.bin



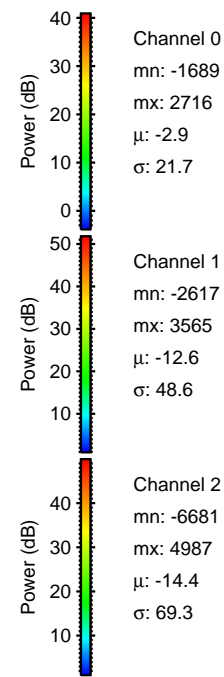
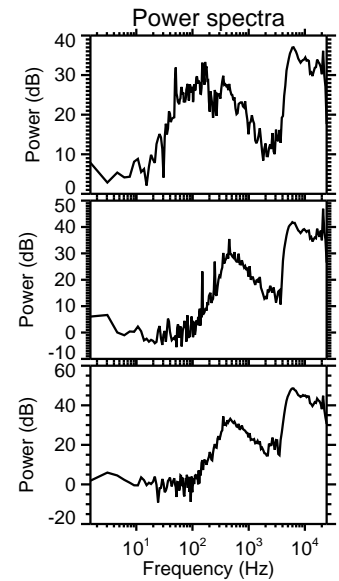
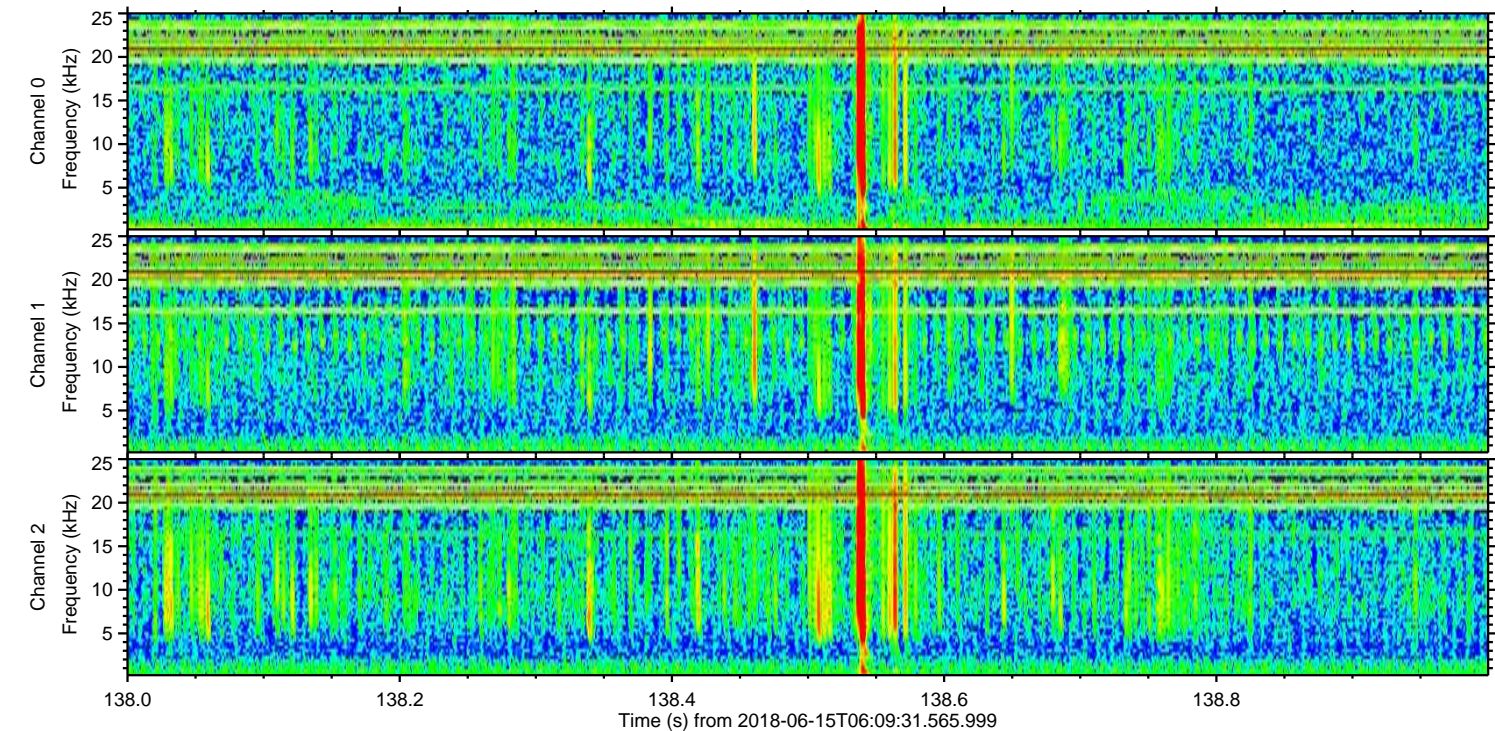
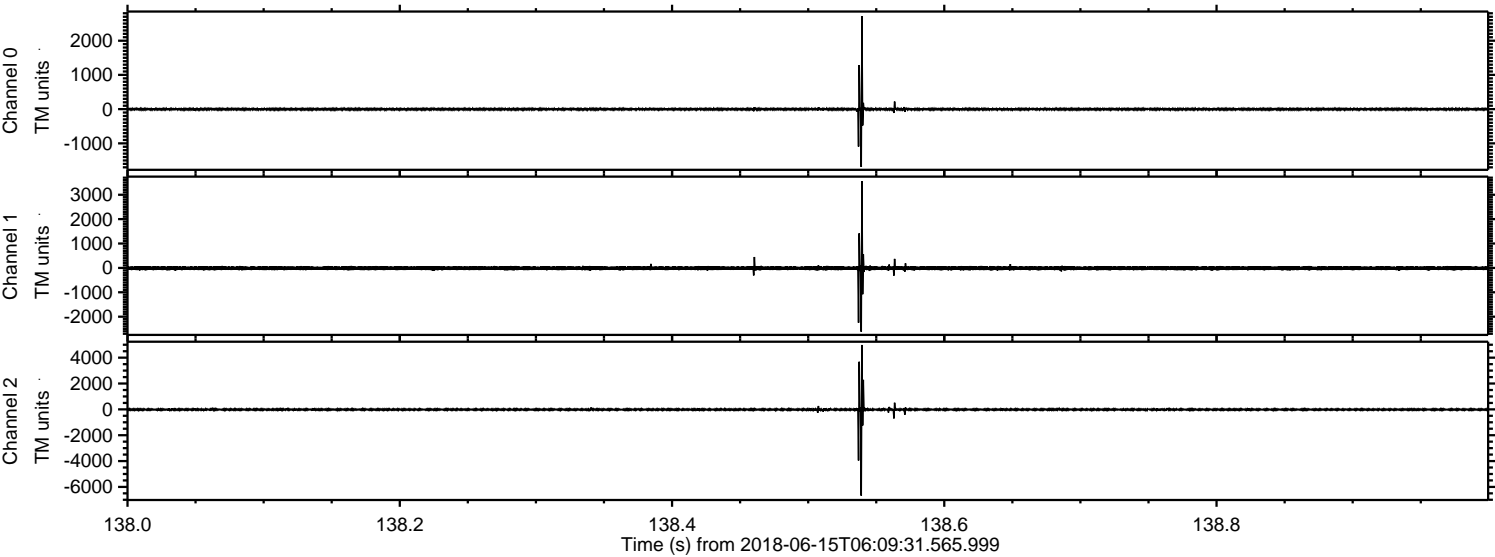
ELMAVAN 3D WAVEFORMS (Measured data sampled at 50 kHz) 51000 packets of 144 samples from 2018-06-15T06:09:31.565.999. Part 121/147

Processed Fri Jun 15 08:17:25 2018 by ELM ver.2012-10-06 from 001__elm20180615_060930__dat00.bin

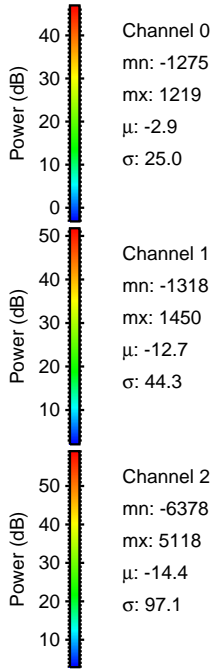
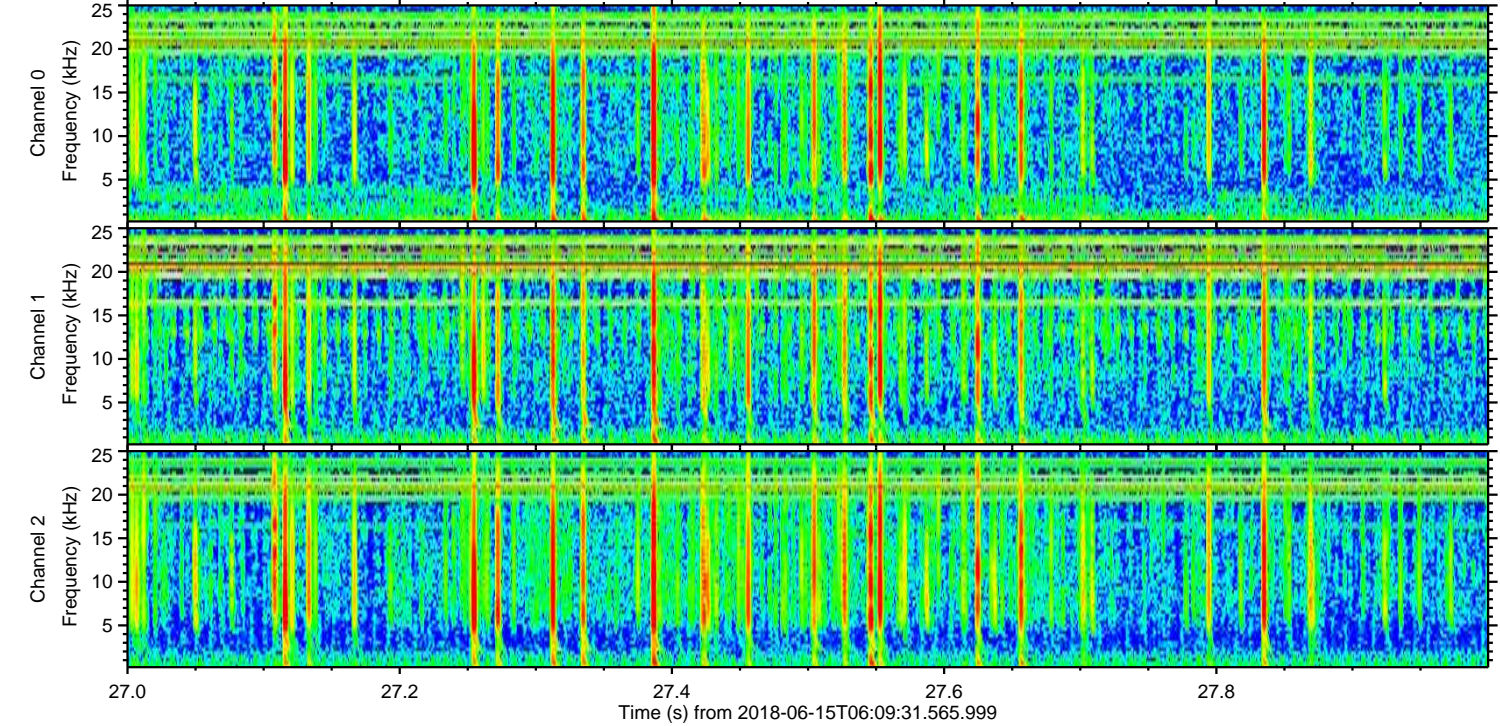
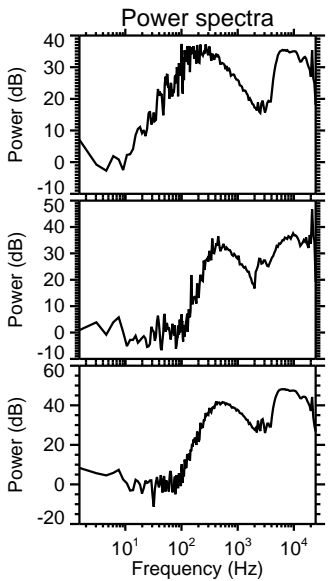
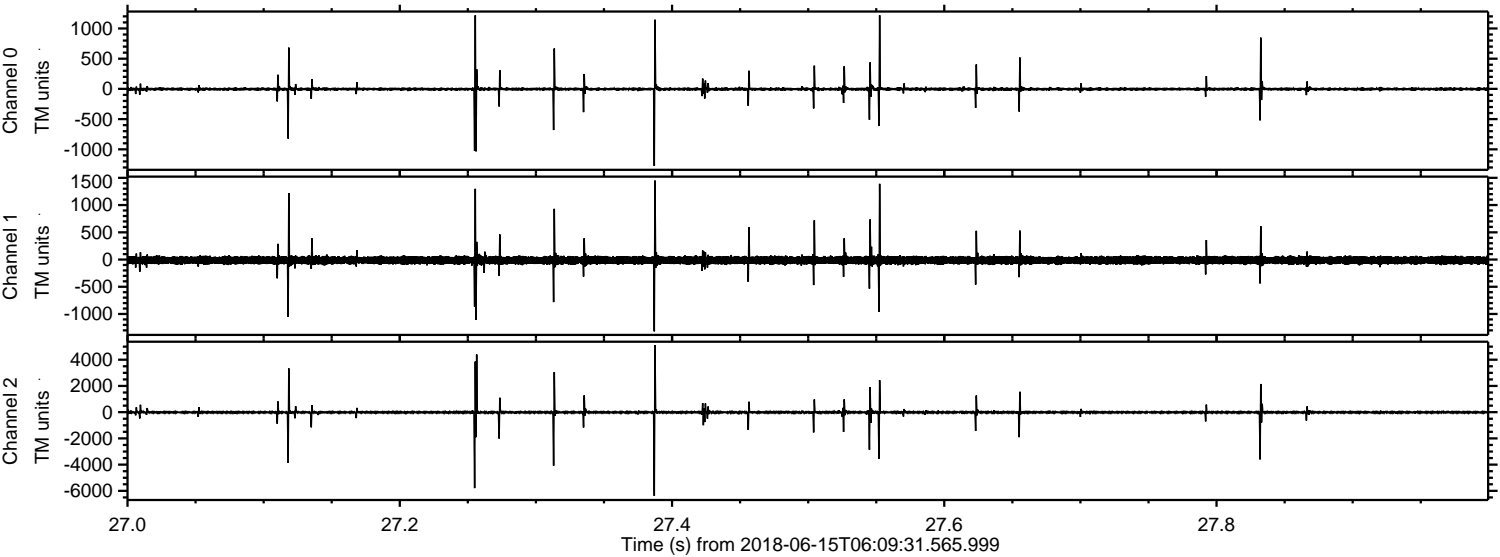


ELMAVAN 3D WAVEFORMS (Measured data sampled at 50 kHz) 51000 packets of 144 samples from 2018-06-15T06:09:31.565.999. Part 139/147

Processed Fri Jun 15 08:17:26 2018 by ELM ver.2012-10-06 from 001__elm20180615_060930__dat00.bin



Processed Fri Jun 15 08:17:26 2018 by ELM ver.2012-10-06 from 001__elm20180615_060930__dat00.bin



Channel 0
mn: -1275
mx: 1219
 μ : -2.9
 σ : 25.0

Channel 1
mn: -1318
mx: 1450
 μ : -12.7
 σ : 44.3

Channel 2
mn: -6378
mx: 5118
 μ : -14.4
 σ : 97.1

Processed Fri Jun 15 08:17:27 2018 by ELM ver.2012-10-06 from 001__elm20180615_060930__dat00.bin

