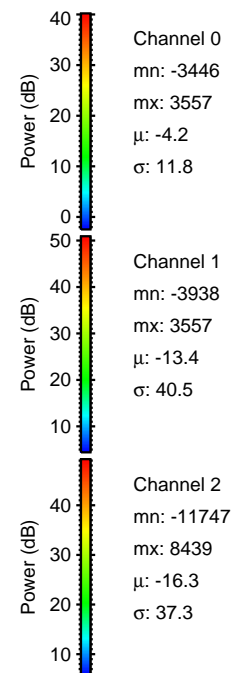
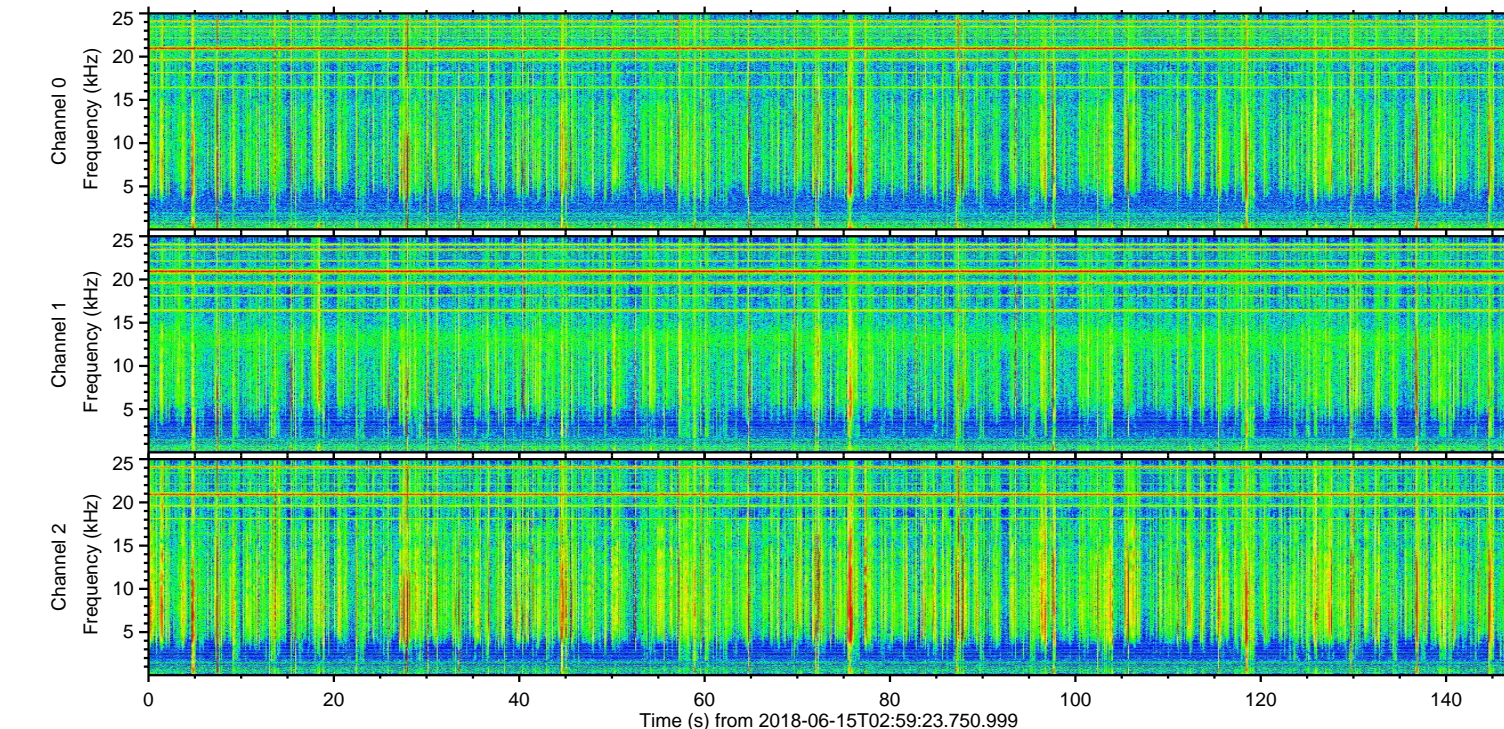
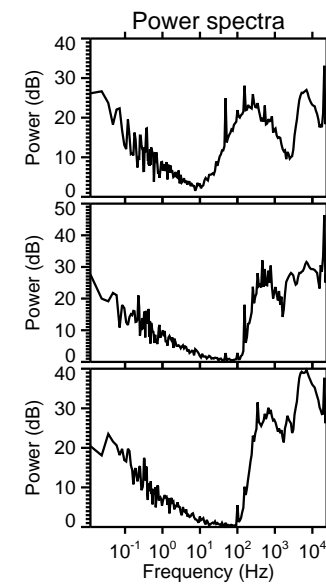
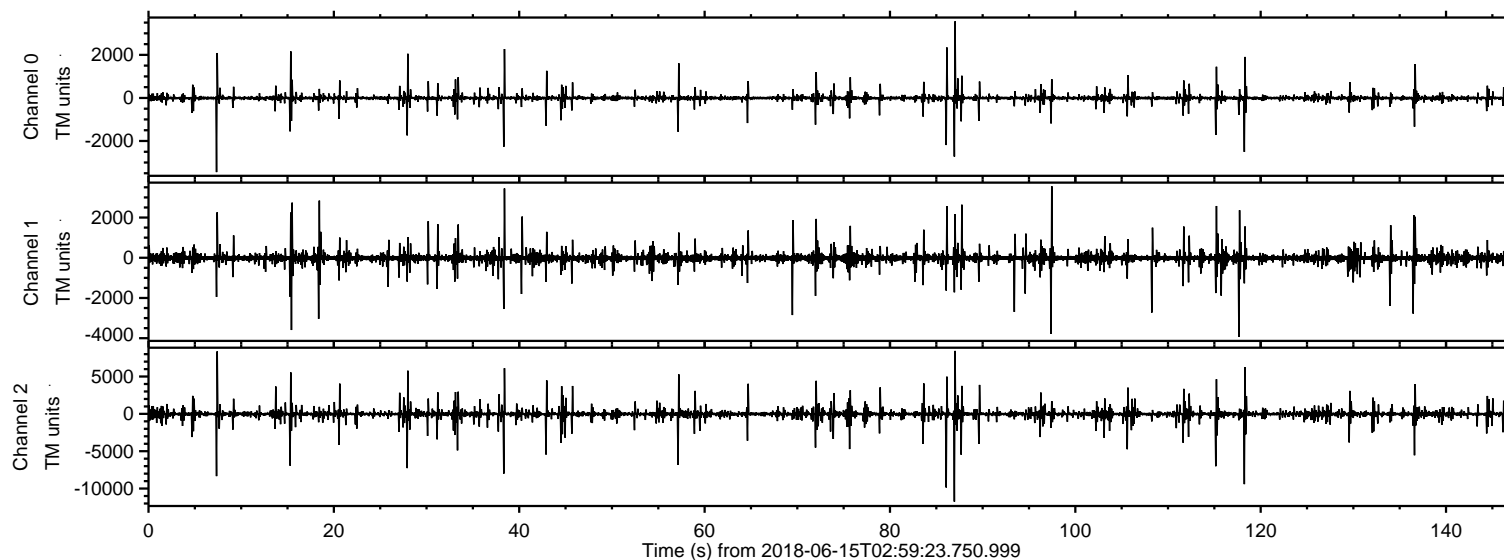
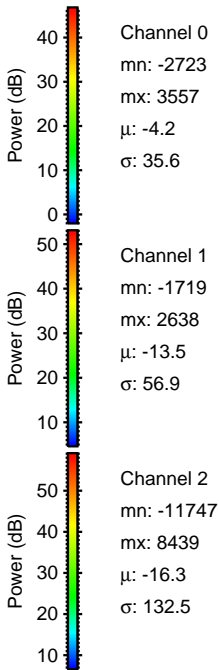
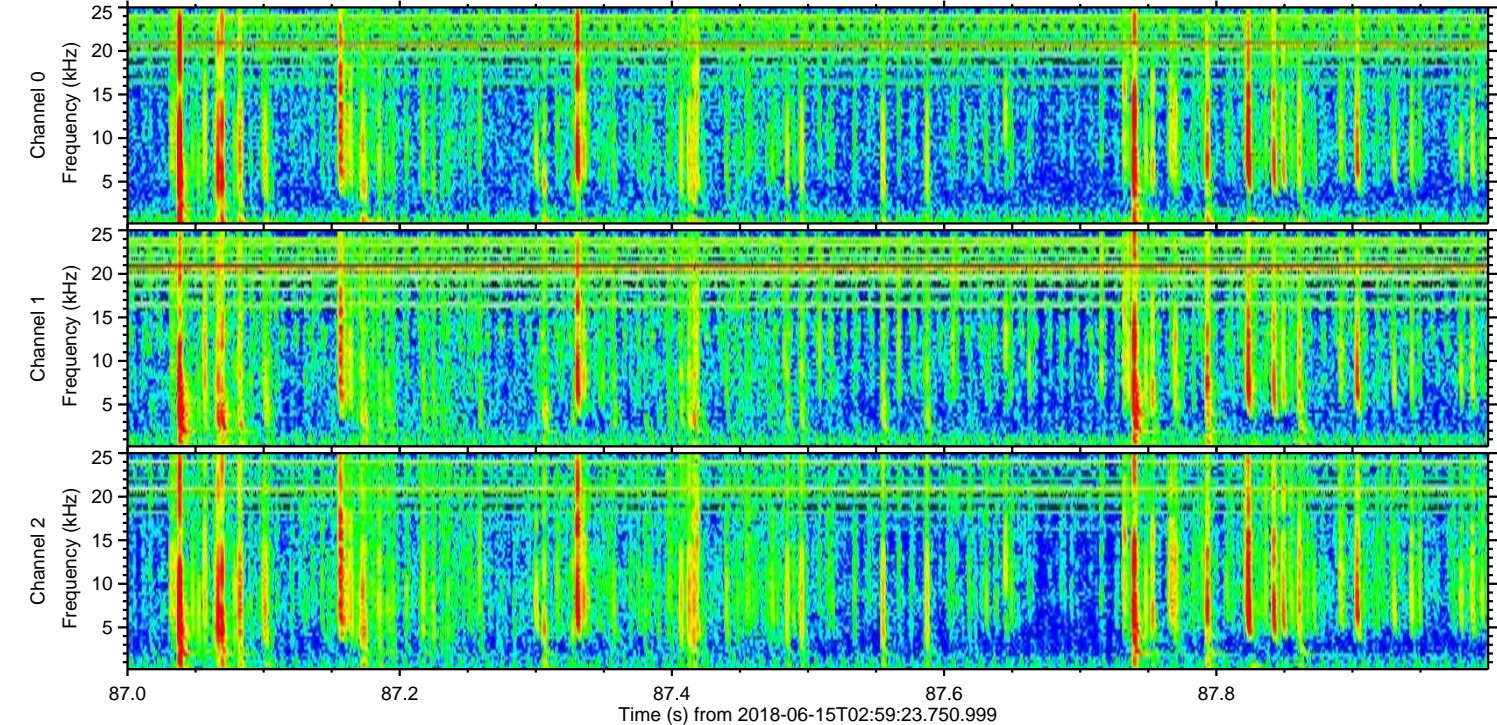
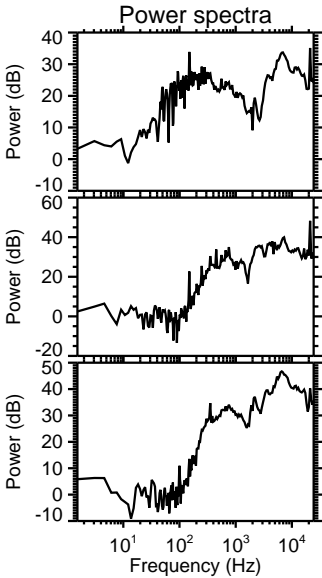
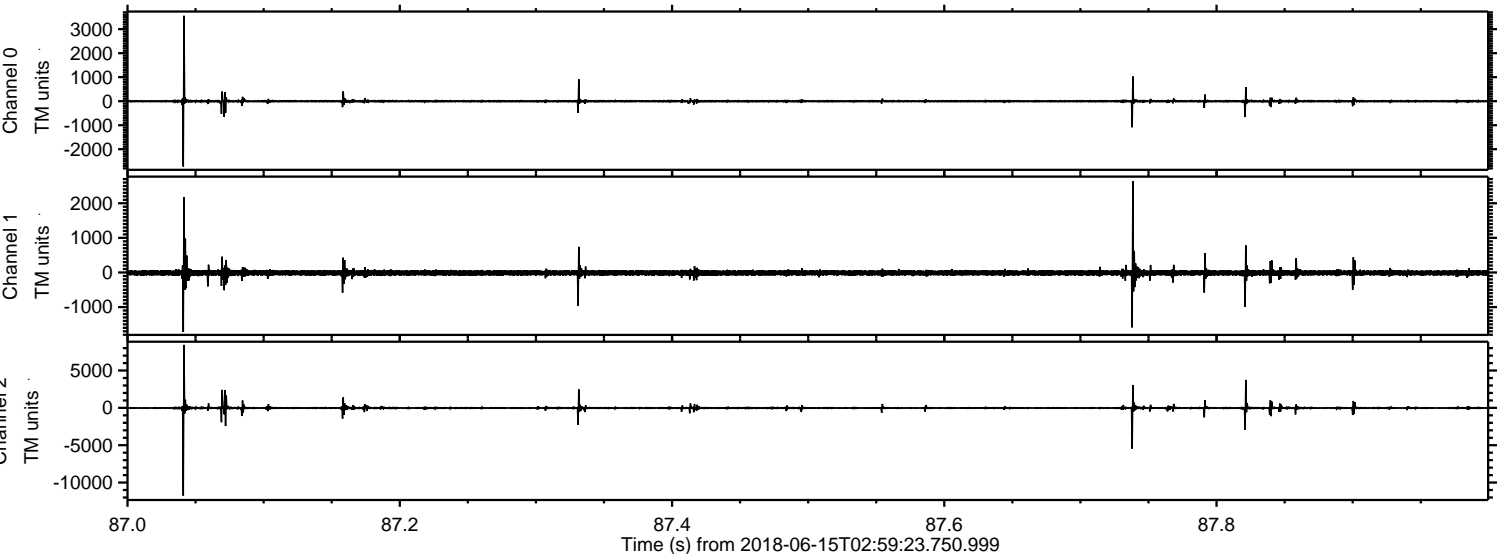


ELMAVAN 3D WAVEFORMS (Measured data sampled at 50 kHz) 51000 packets of 144 samples from 2018-06-15T02:59:23.750.999.

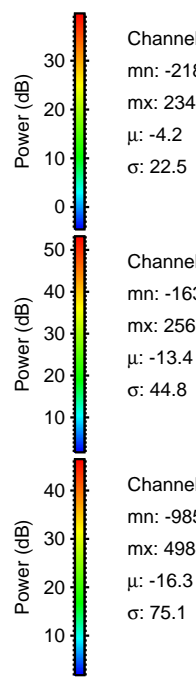
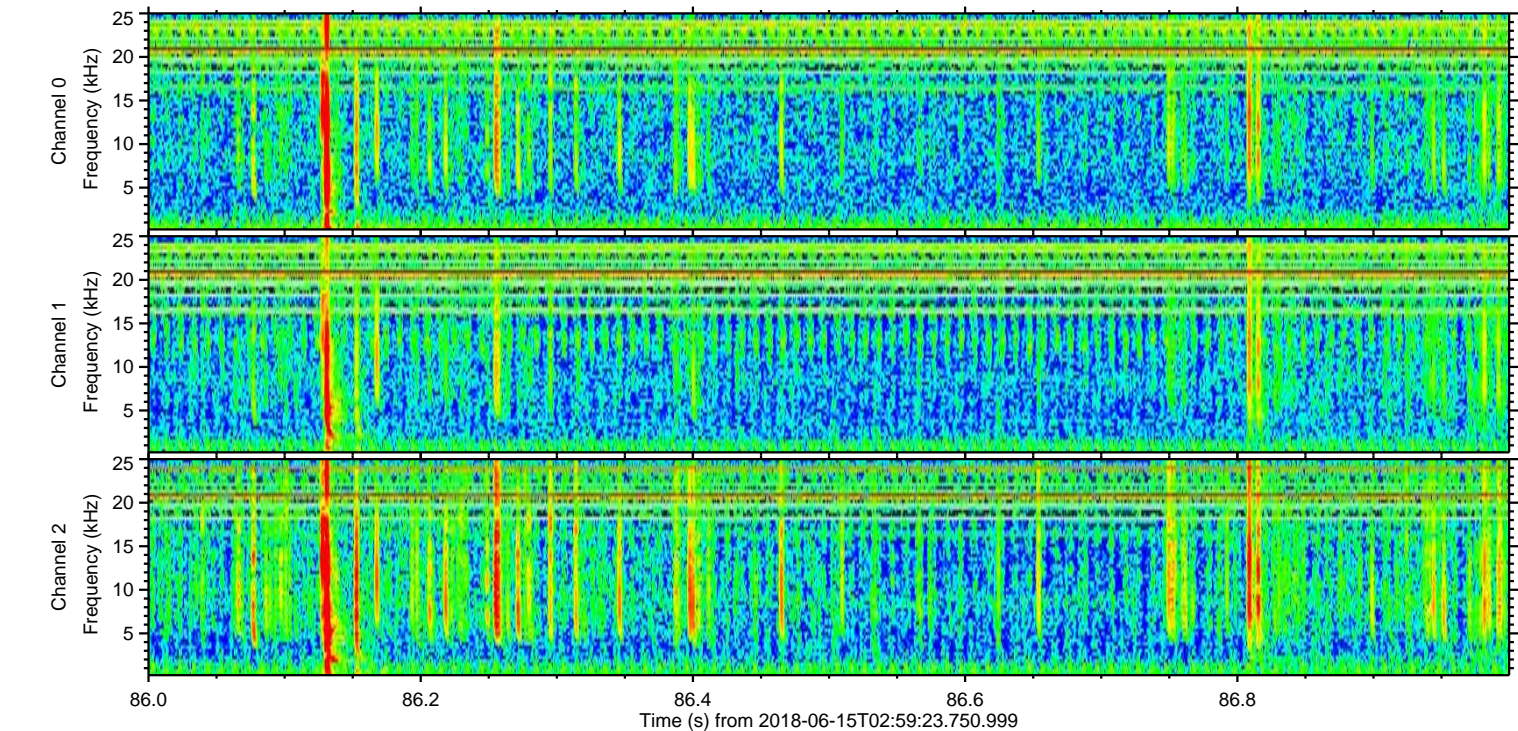
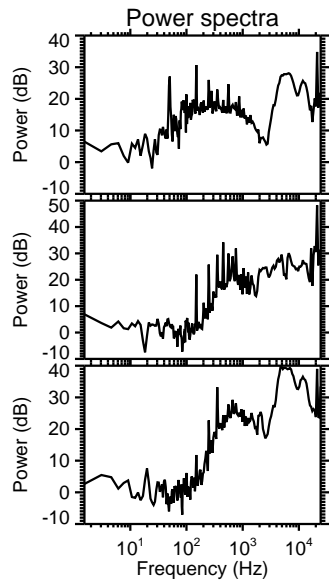
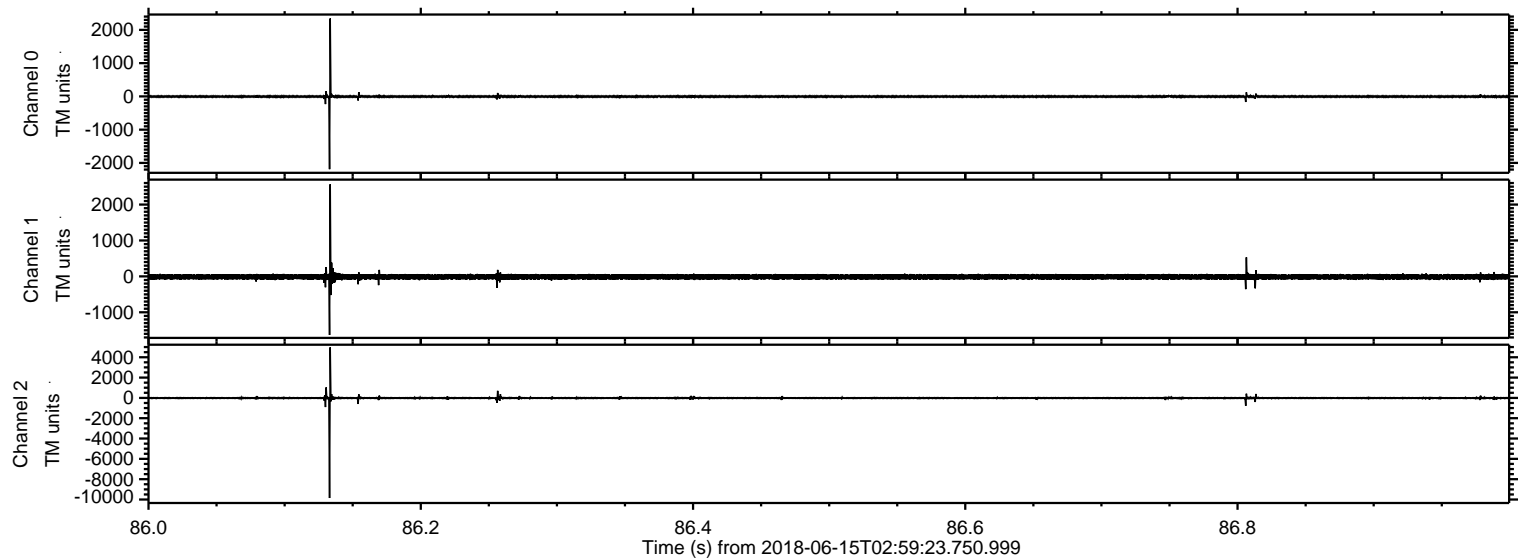
Processed Fri Jun 15 05:07:12 2018 by ELM ver.2012-10-06 from 001__elm20180615_025922__dat00.bin



Processed Fri Jun 15 05:07:17 2018 by ELM ver.2012-10-06 from 001__elm20180615_025922__dat00.bin



Processed Fri Jun 15 05:07:18 2018 by ELM ver.2012-10-06 from 001__elm20180615_025922__dat00.bin



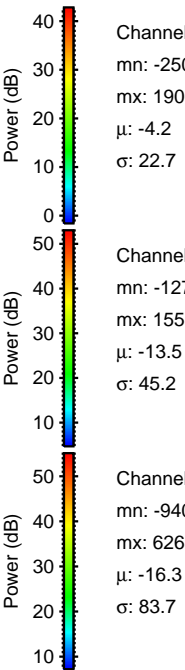
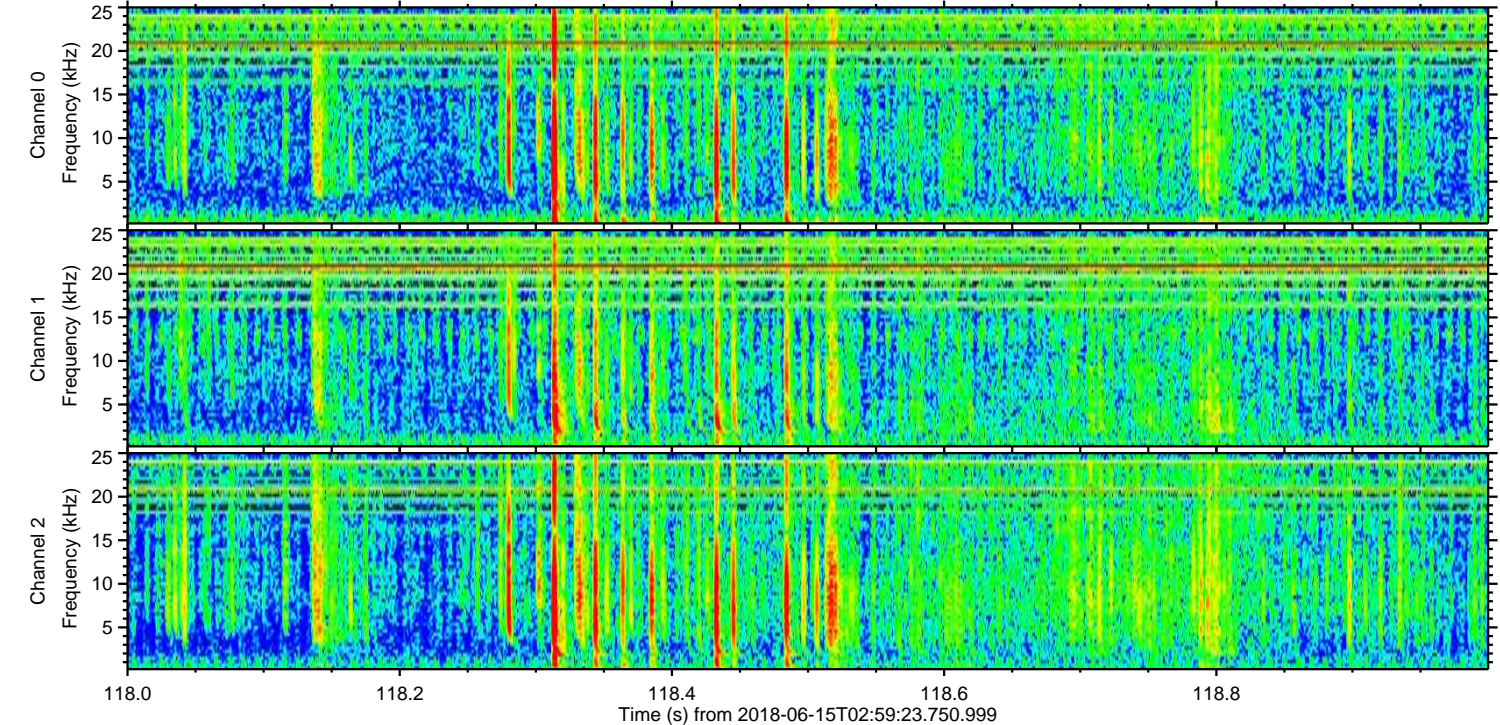
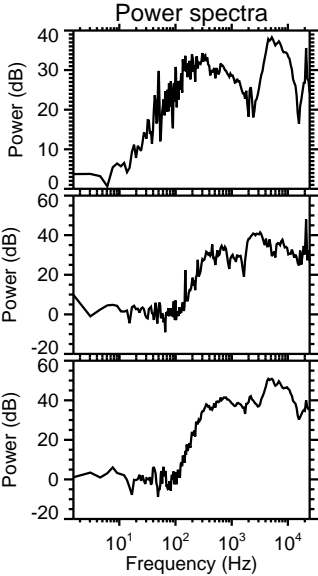
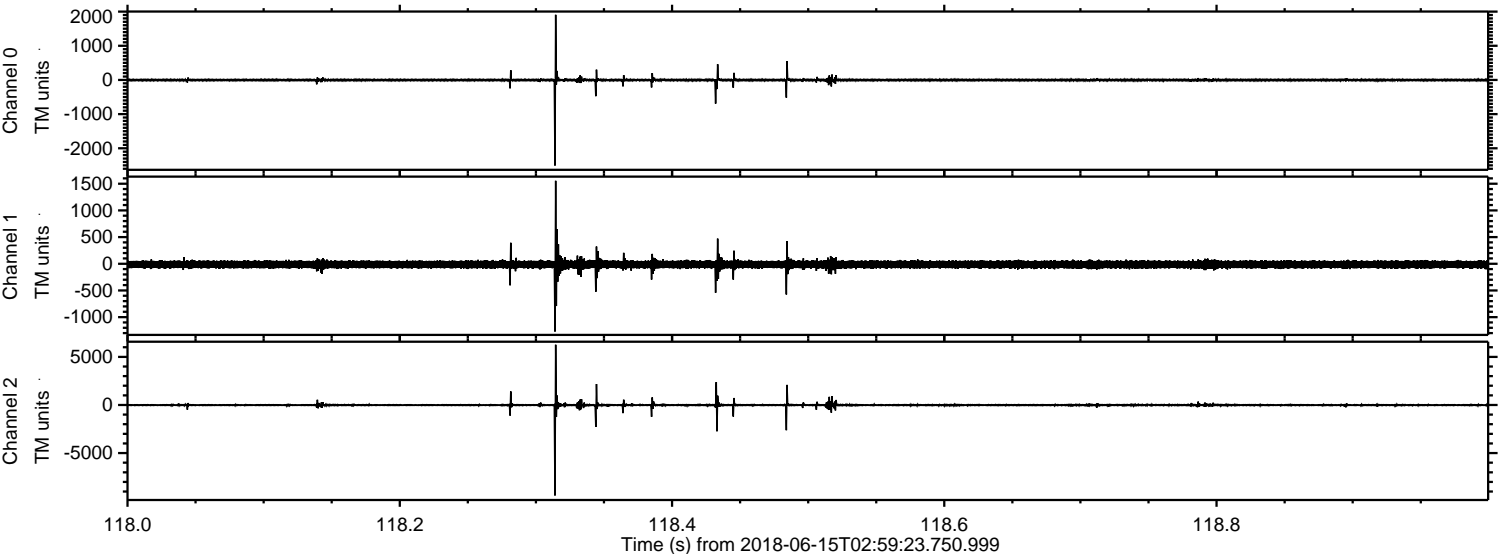
Channel 0
mn: -2188
mx: 2344
 μ : -4.2
 σ : 22.5

Channel 1
mn: -1632
mx: 2567
 μ : -13.4
 σ : 44.8

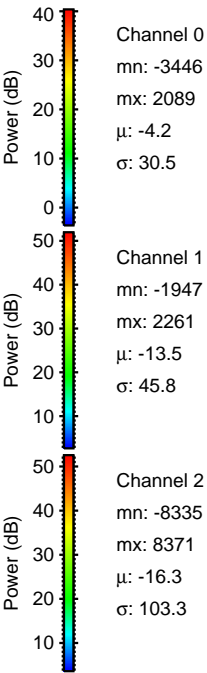
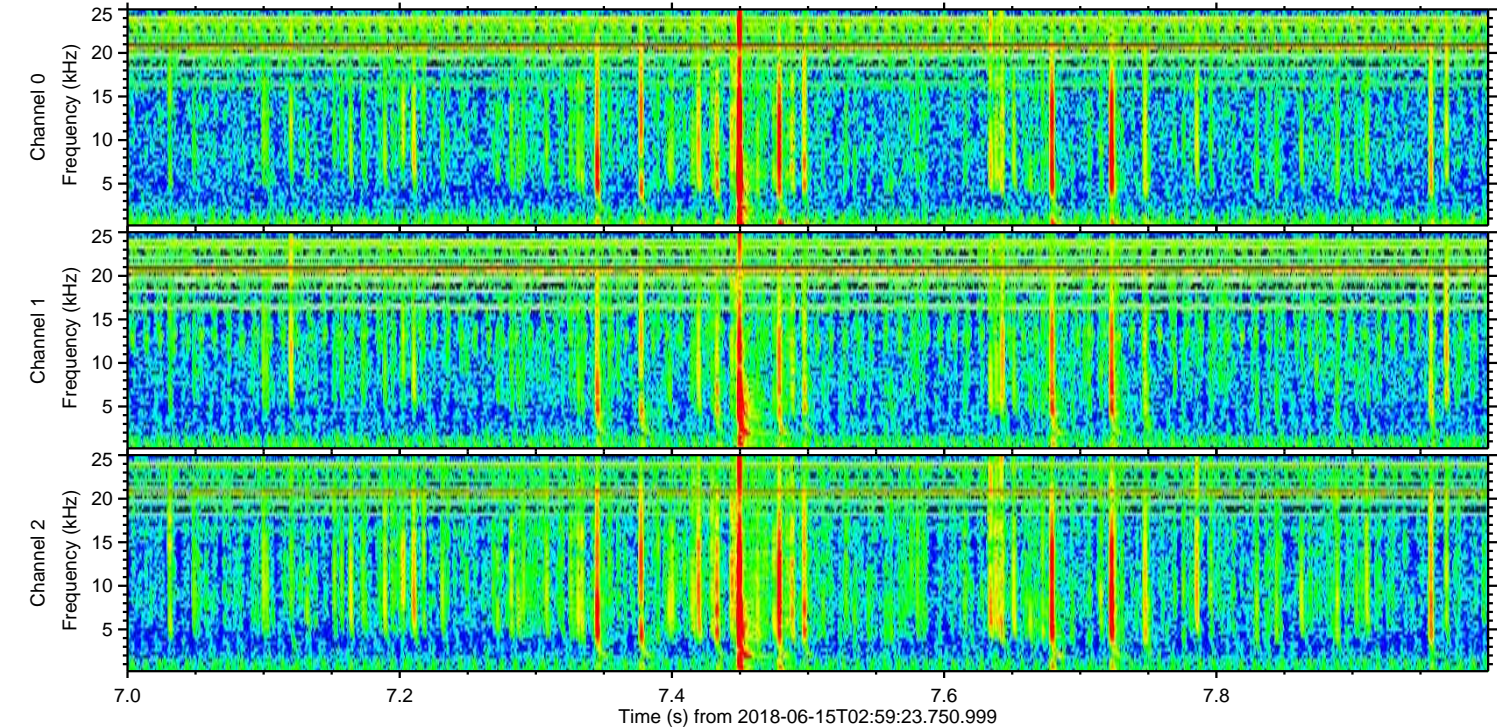
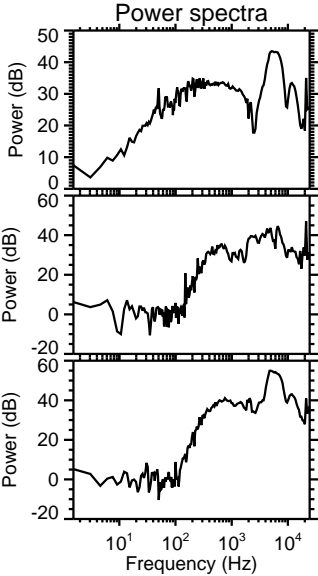
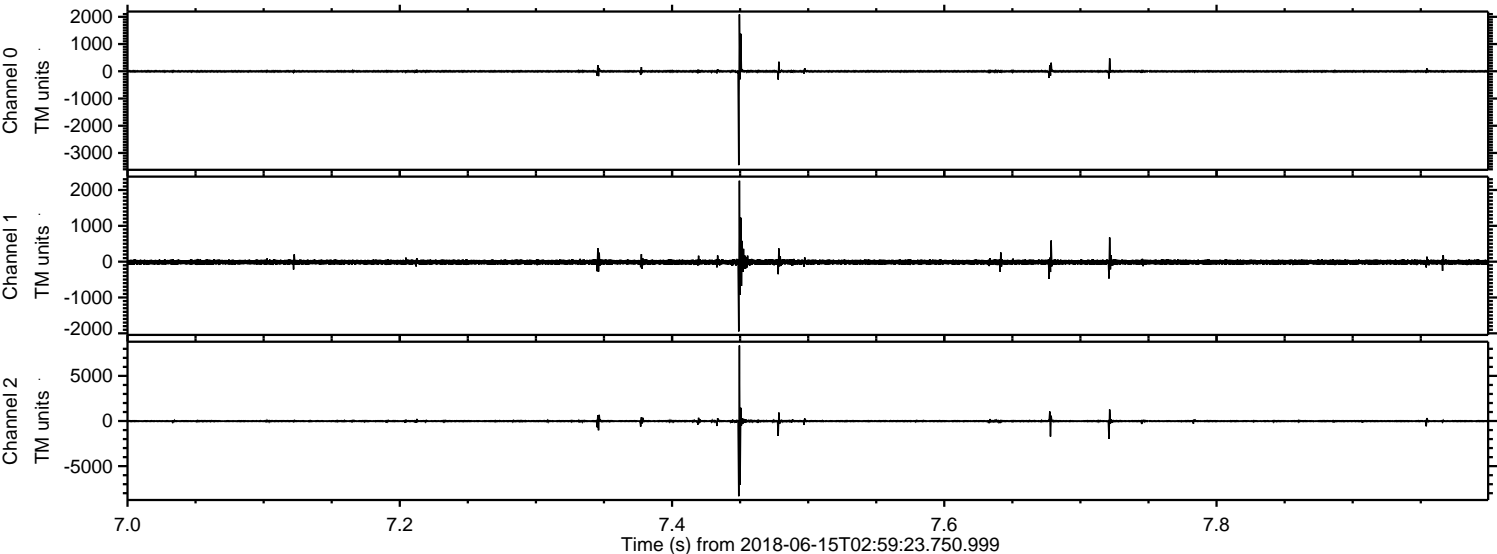
Channel 2
mn: -9850
mx: 4984
 μ : -16.3
 σ : 75.1

ELMAVAN 3D WAVEFORMS (Measured data sampled at 50 kHz) 51000 packets of 144 samples from 2018-06-15T02:59:23.750.999. Part 119/147

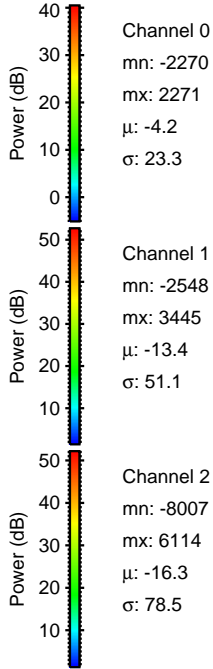
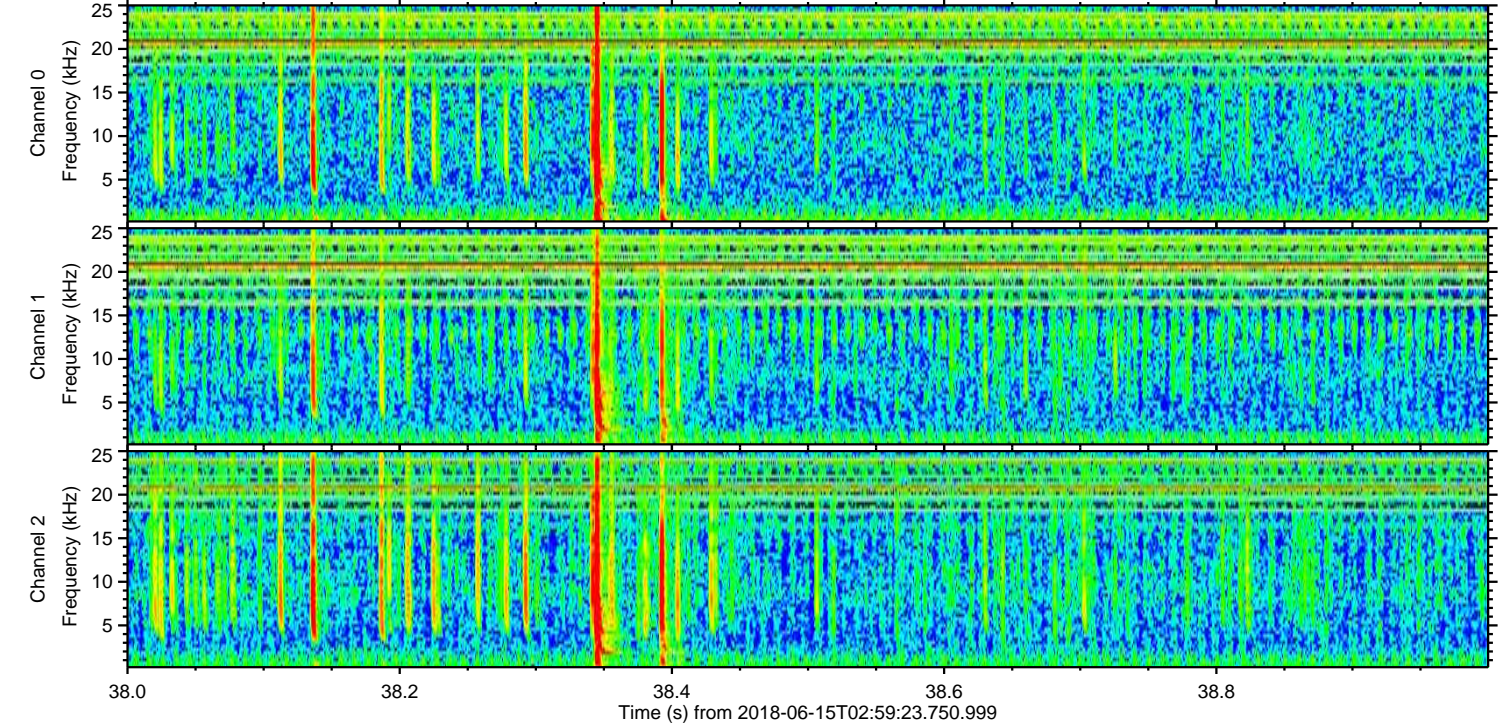
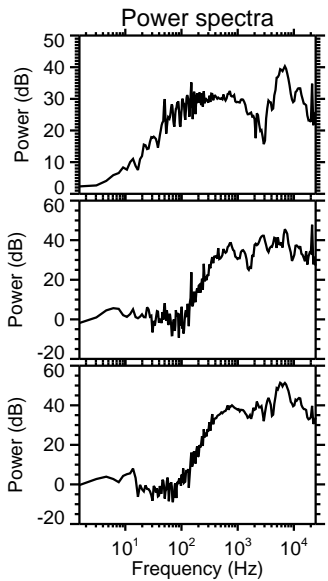
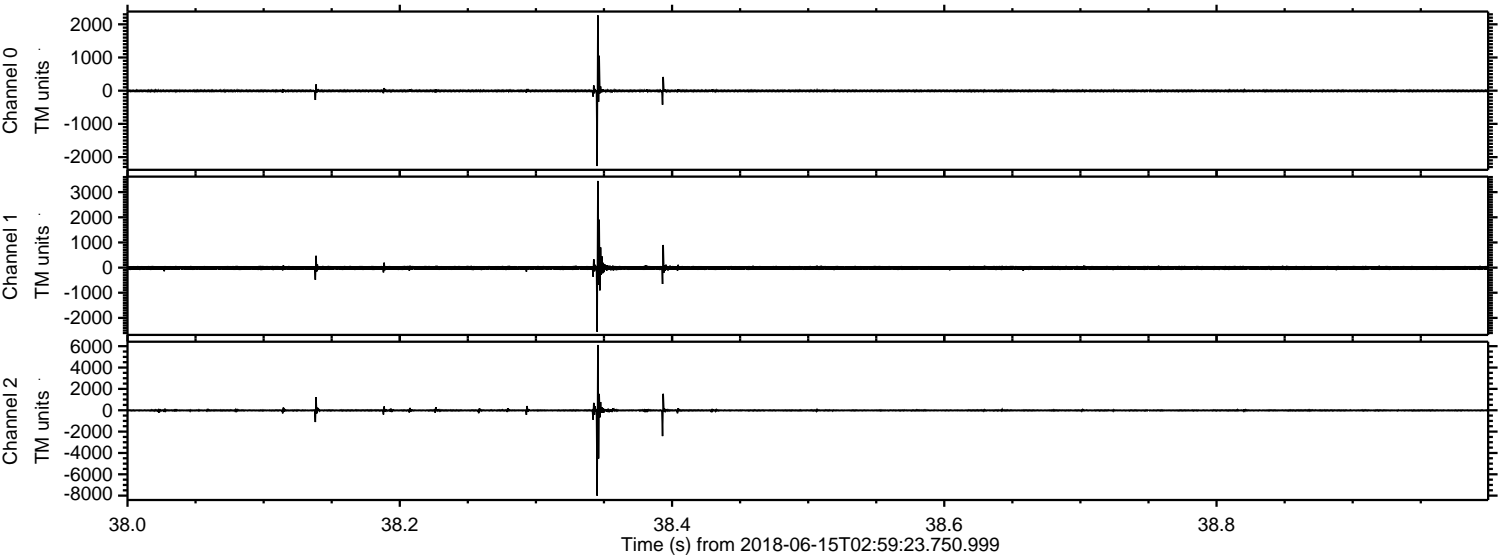
Processed Fri Jun 15 05:07:19 2018 by ELM ver.2012-10-06 from 001__elm20180615_025922__dat00.bin



Processed Fri Jun 15 05:07:19 2018 by ELM ver.2012-10-06 from 001__elm20180615_025922__dat00.bin

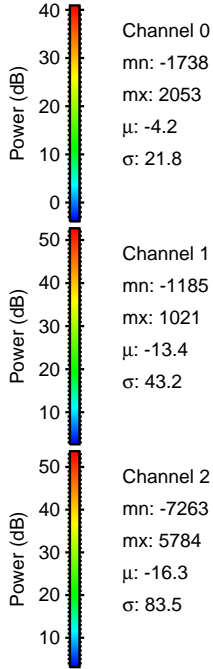
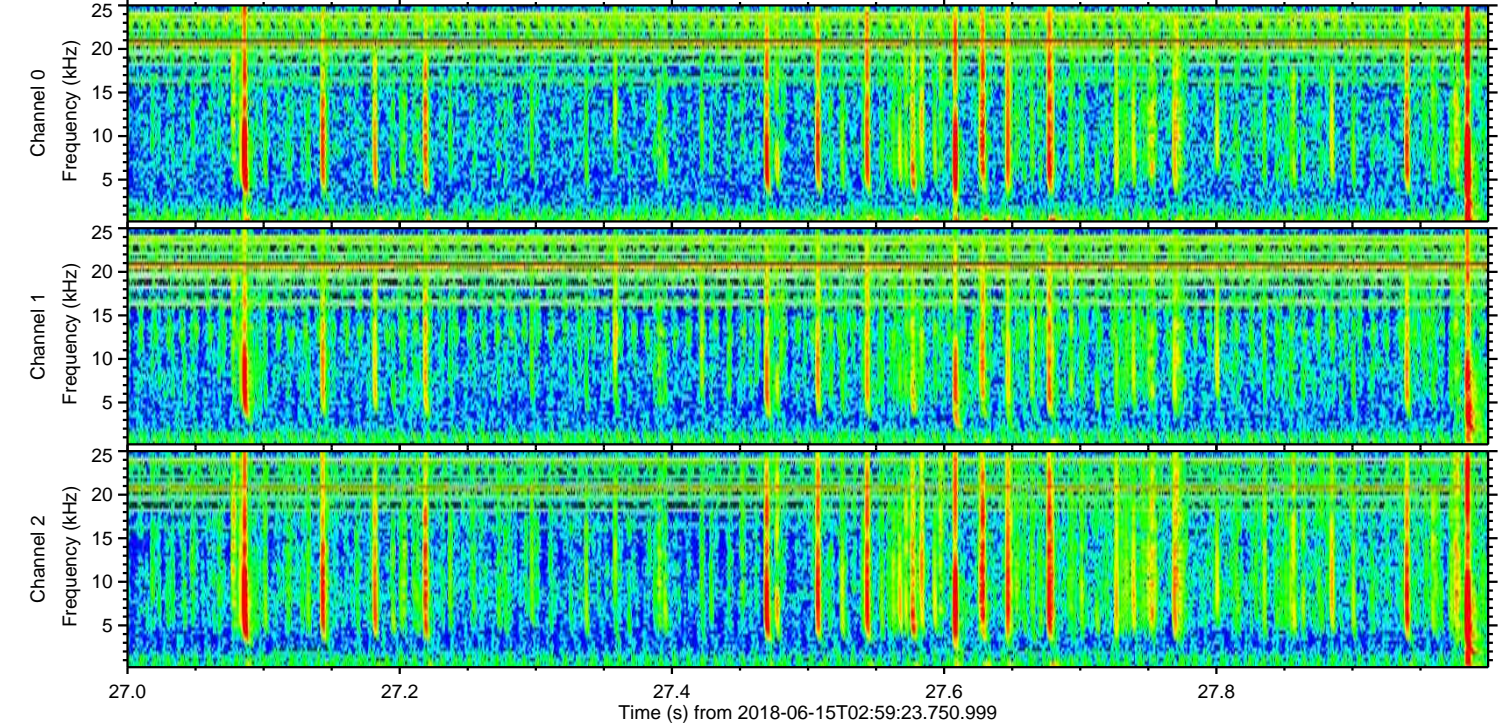
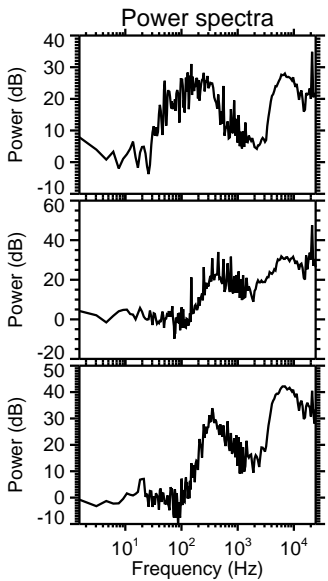
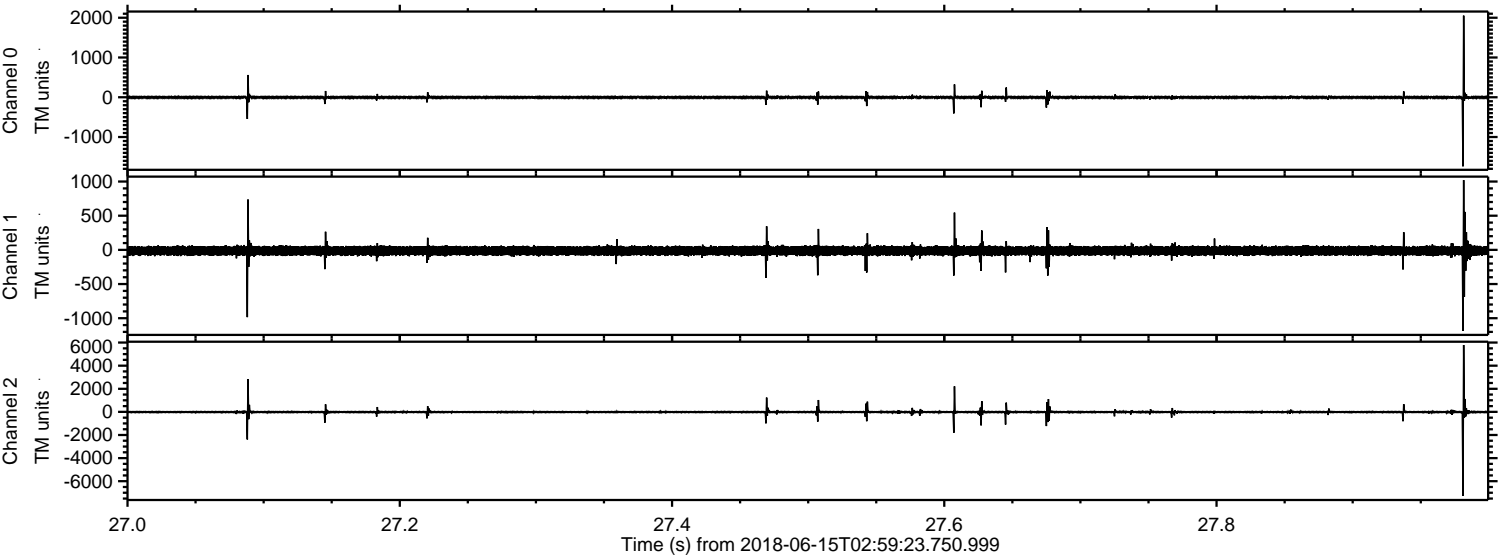


Processed Fri Jun 15 05:07:20 2018 by ELM ver.2012-10-06 from 001__elm20180615_025922__dat00.bin



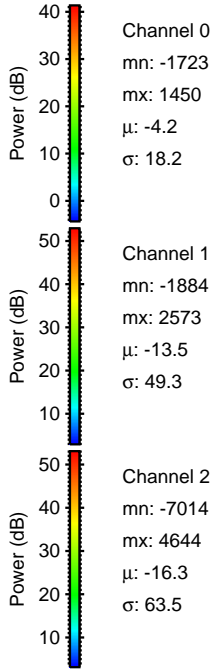
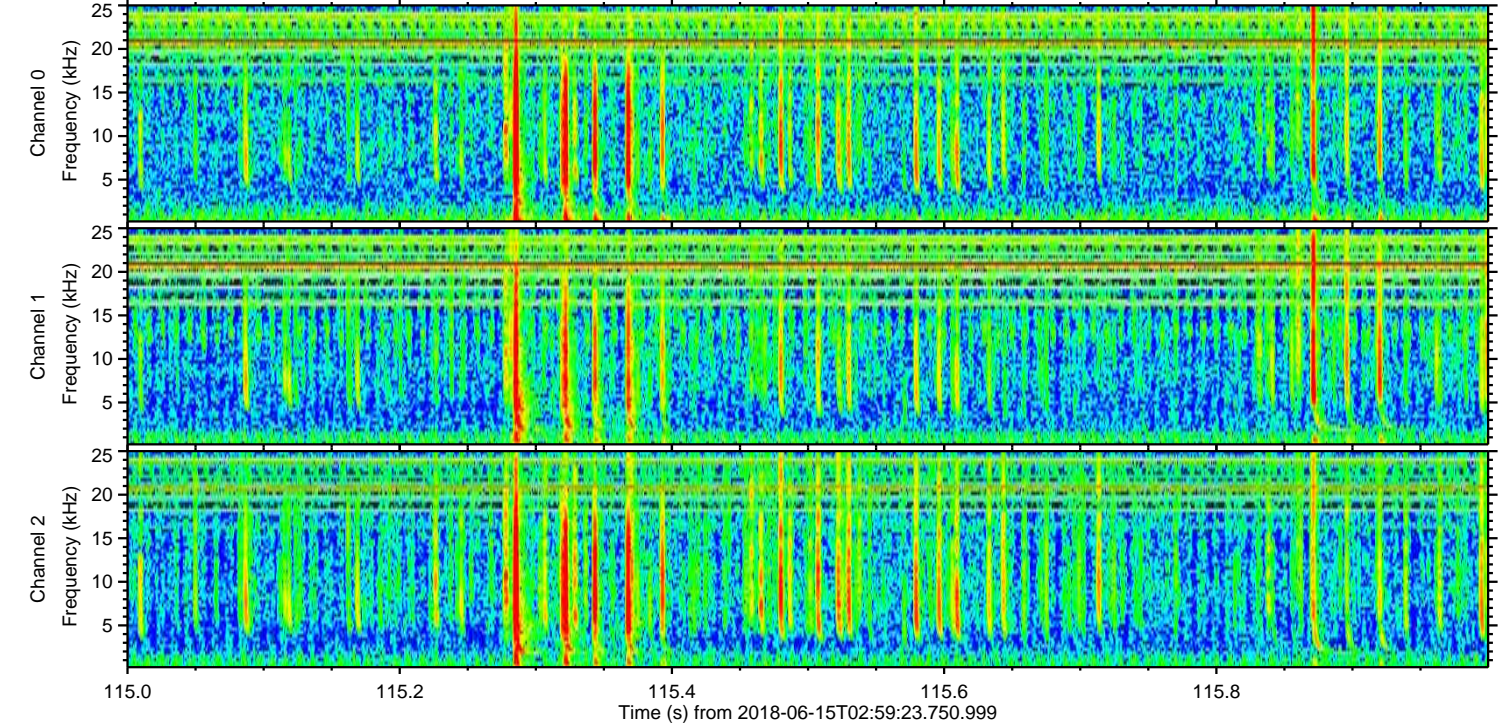
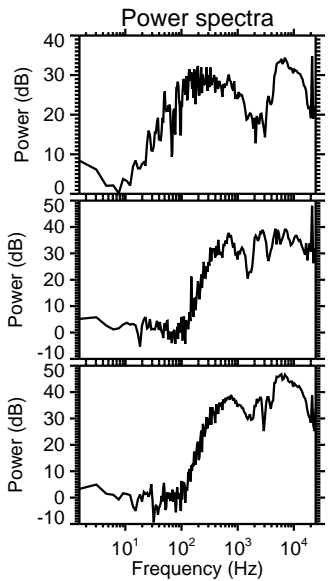
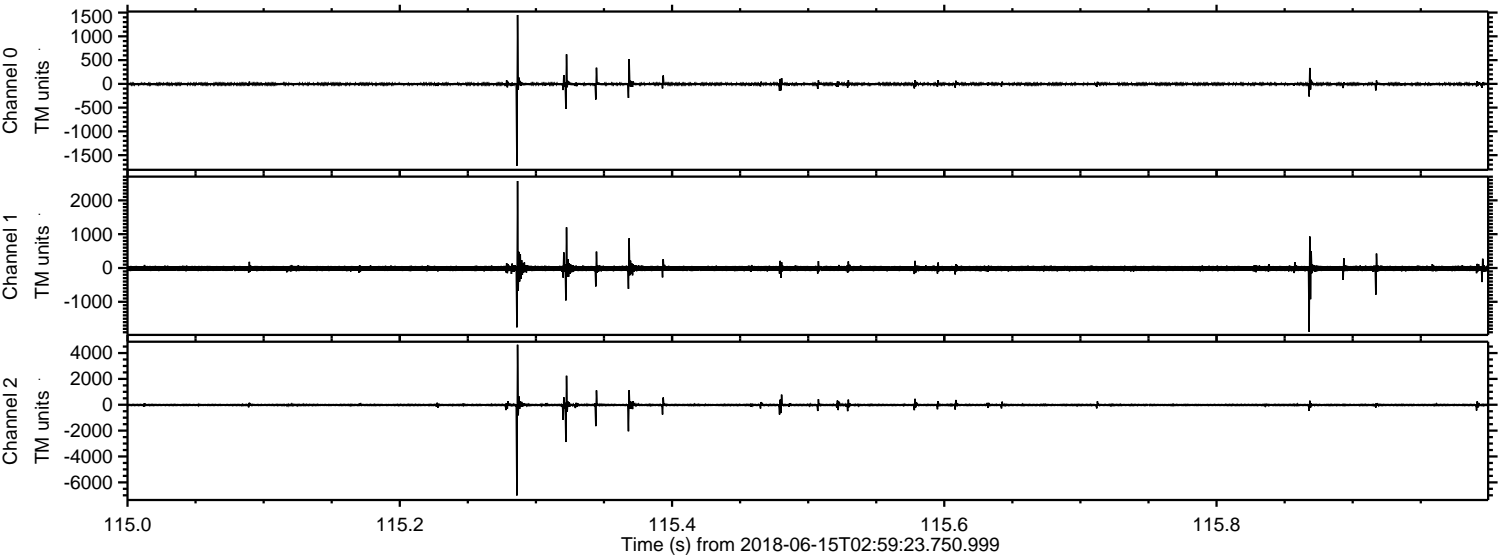
ELMAVAN 3D WAVEFORMS (Measured data sampled at 50 kHz) 51000 packets of 144 samples from 2018-06-15T02:59:23.750.999. Part 28/147

Processed Fri Jun 15 05:07:21 2018 by ELM ver.2012-10-06 from 001__elm20180615_025922__dat00.bin



ELMAVAN 3D WAVEFORMS (Measured data sampled at 50 kHz) 51000 packets of 144 samples from 2018-06-15T02:59:23.750.999. Part 116/147

Processed Fri Jun 15 05:07:21 2018 by ELM ver.2012-10-06 from 001__elm20180615_025922__dat00.bin

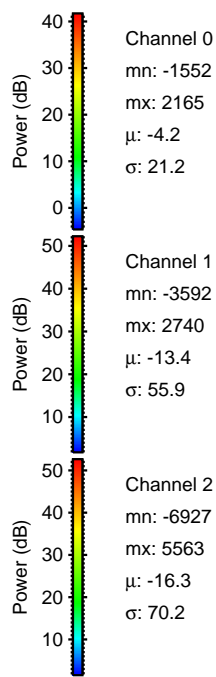
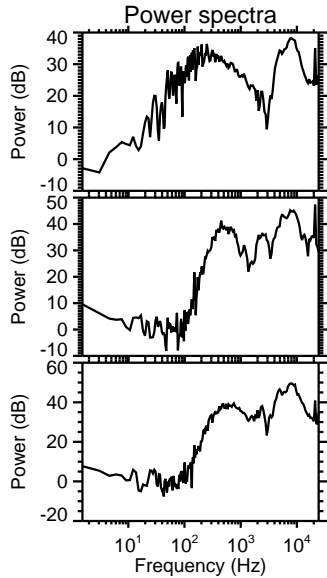
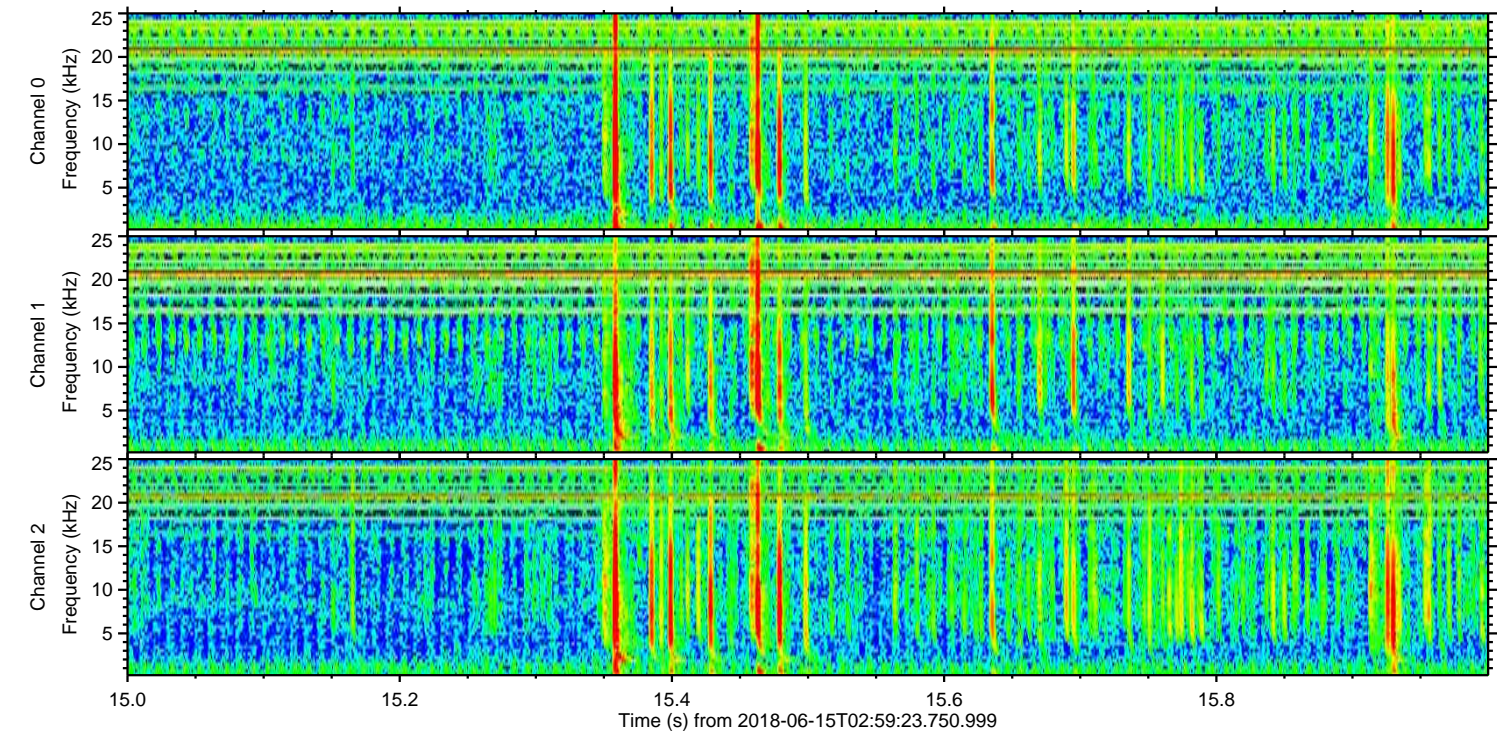
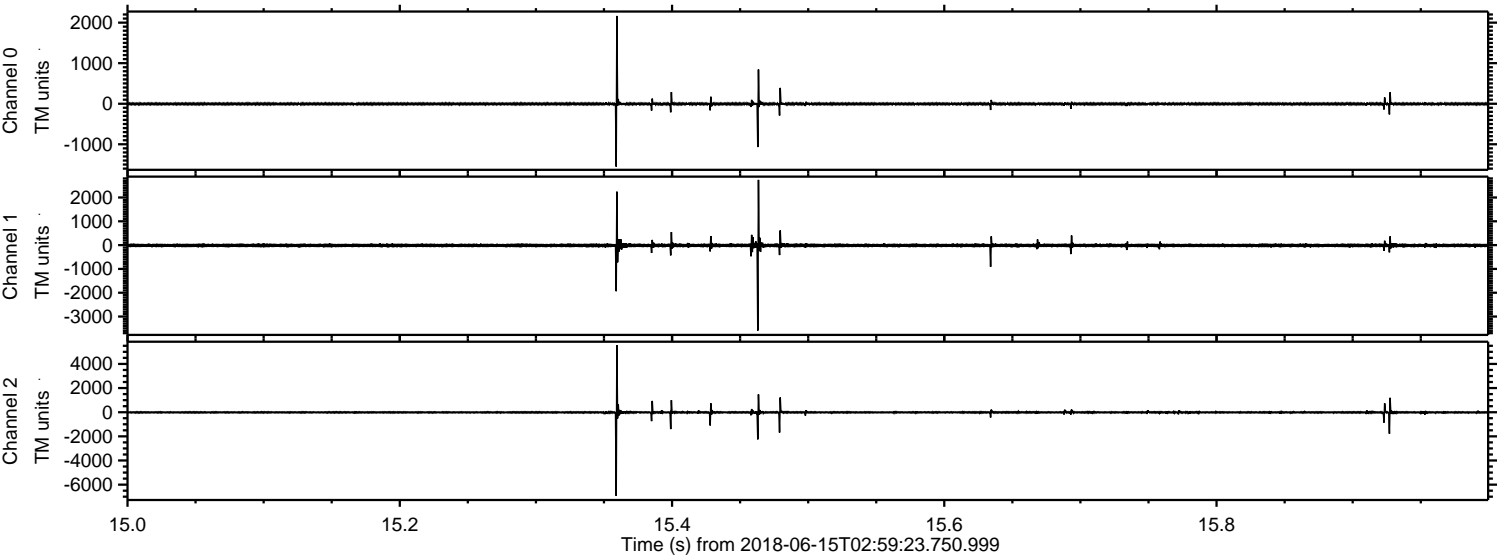


Channel 0
mn: -1723
mx: 1450
 μ : -4.2
 σ : 18.2

Channel 1
mn: -1884
mx: 2573
 μ : -13.5
 σ : 49.3

Channel 2
mn: -7014
mx: 4644
 μ : -16.3
 σ : 63.5

Processed Fri Jun 15 05:07:22 2018 by ELM ver.2012-10-06 from 001__elm20180615_025922__dat00.bin



Processed Fri Jun 15 05:07:23 2018 by ELM ver.2012-10-06 from 001__elm20180615_025922__dat00.bin

