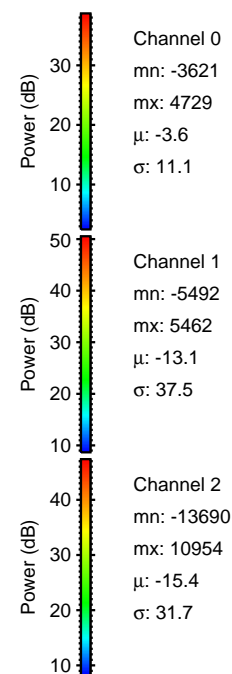
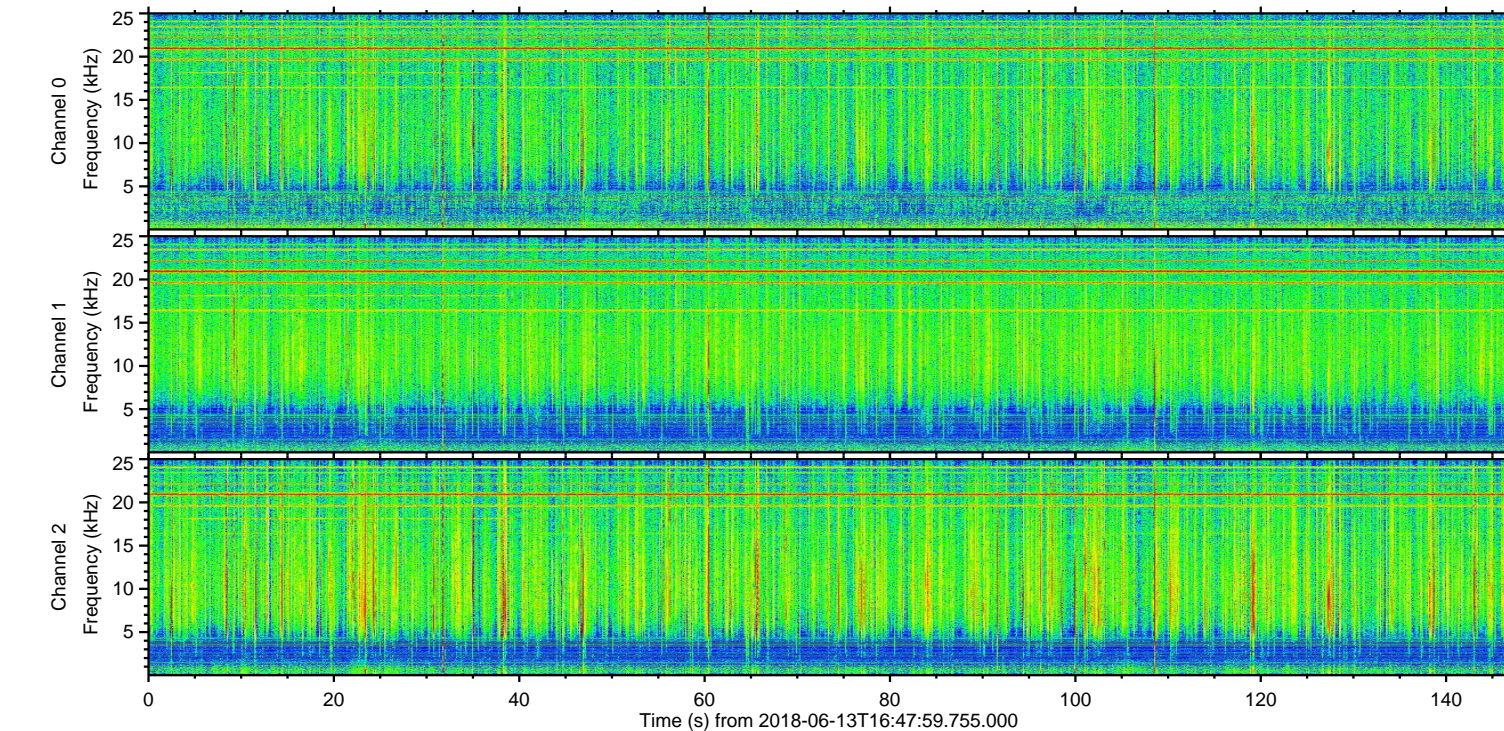
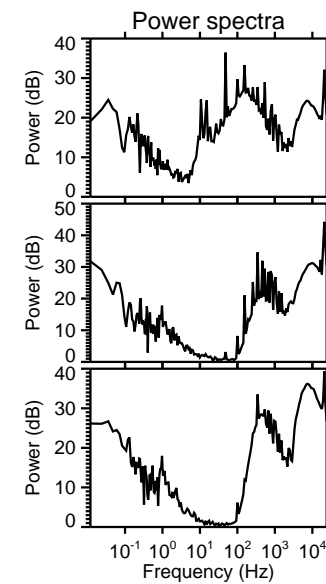
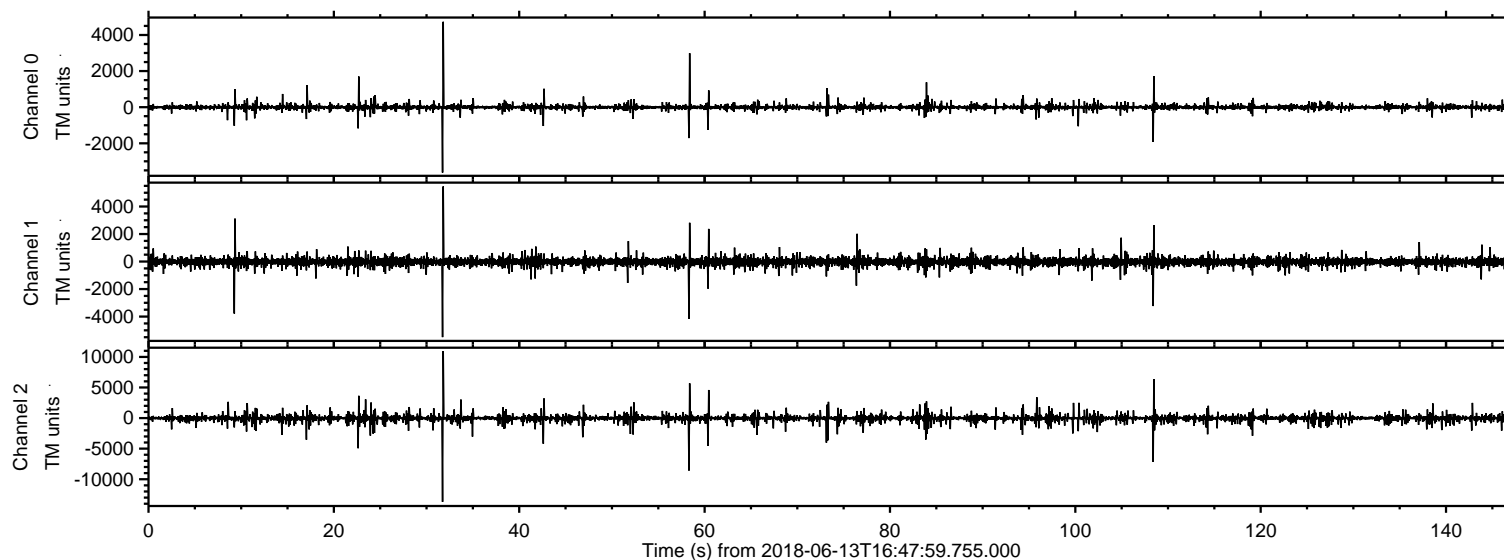
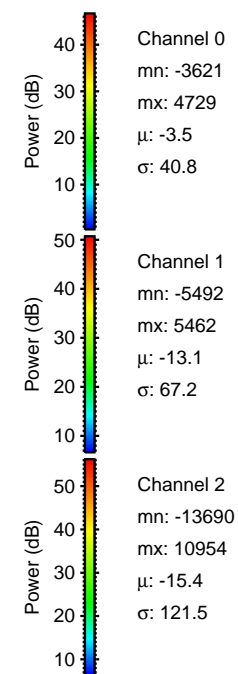
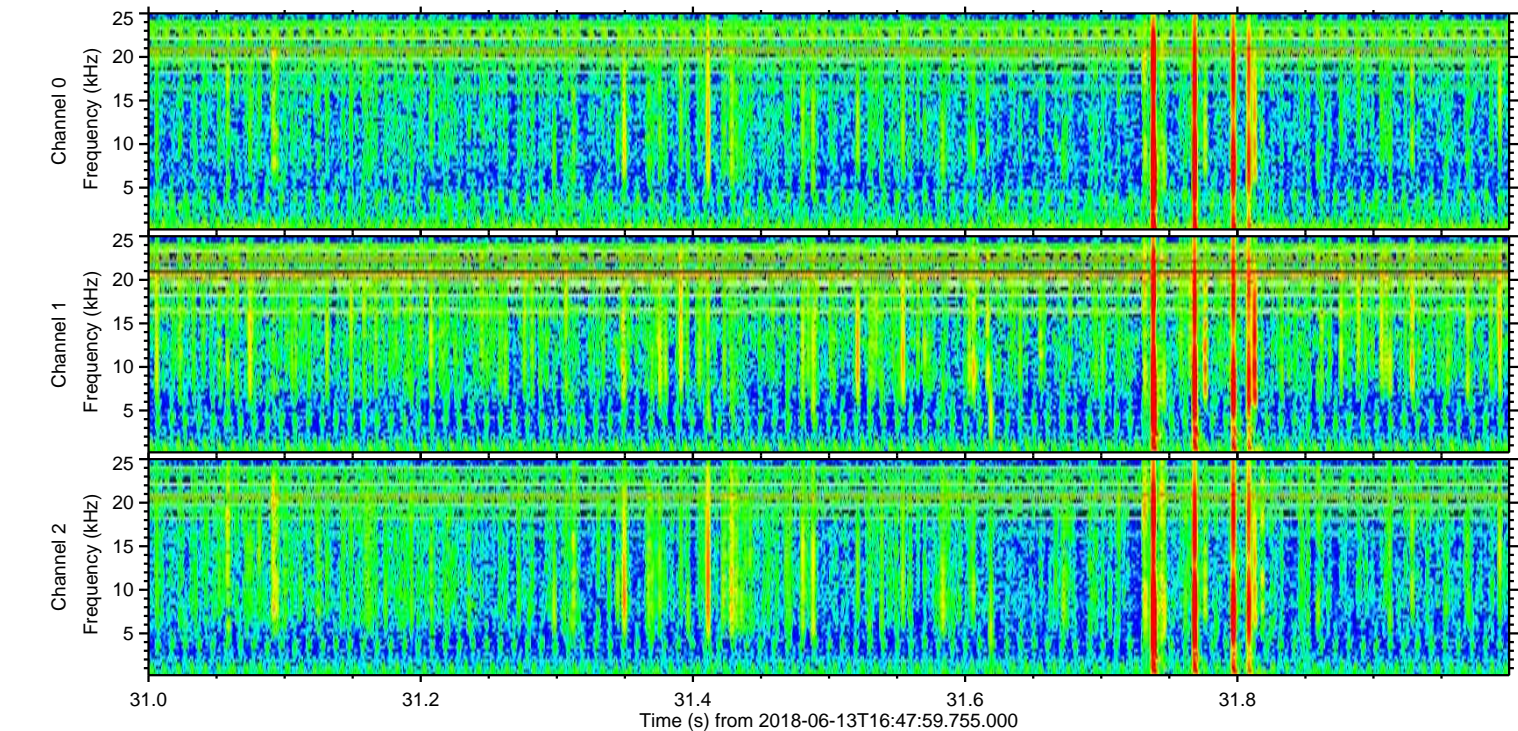
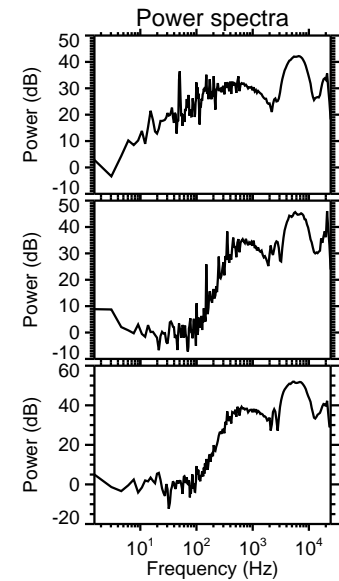
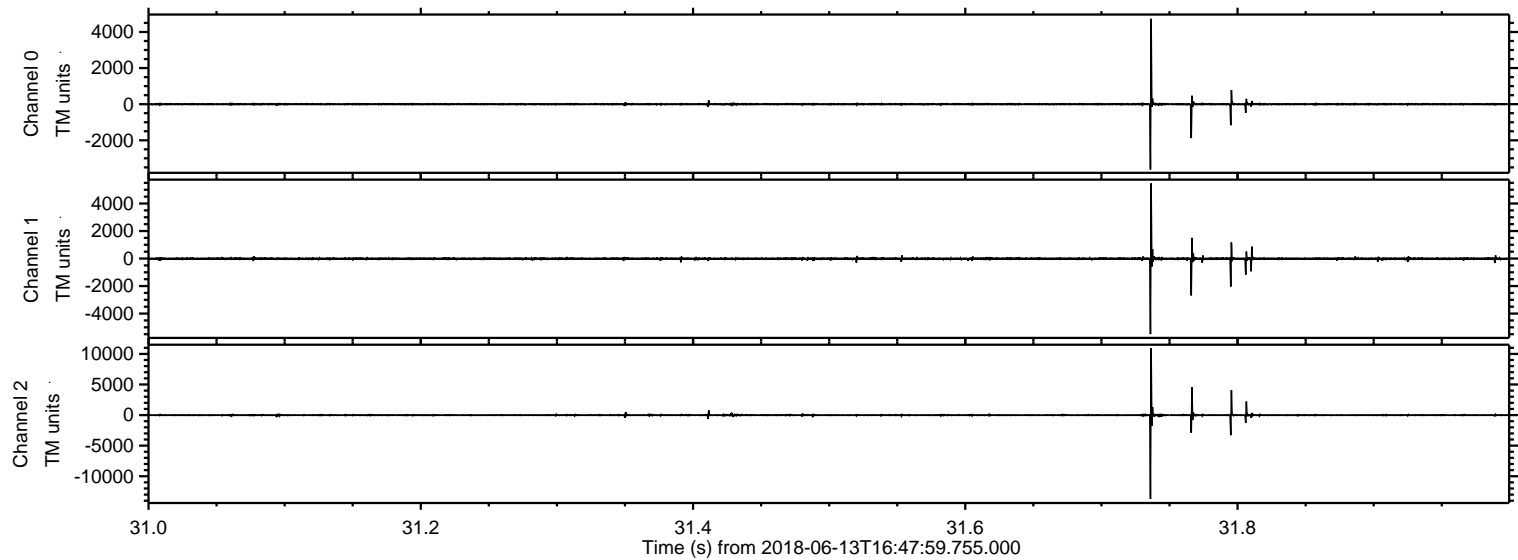


ELMAVAN 3D WAVEFORMS (Measured data sampled at 50 kHz) 51000 packets of 144 samples from 2018-06-13T16:47:59.755.000.

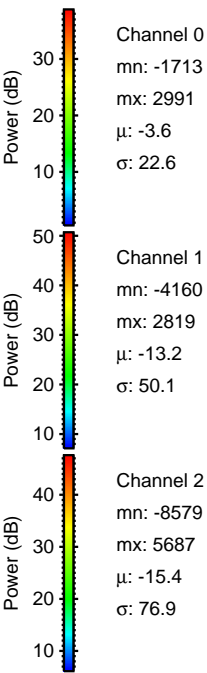
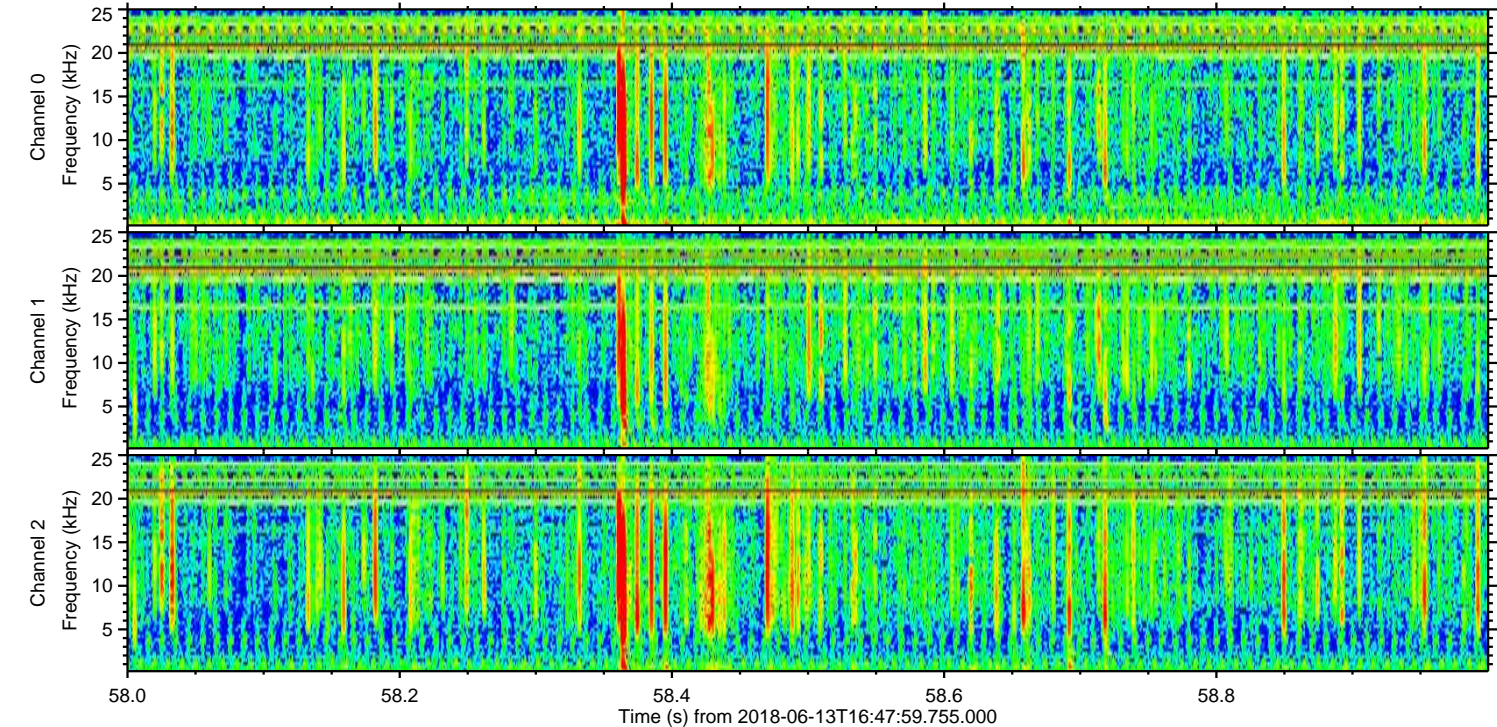
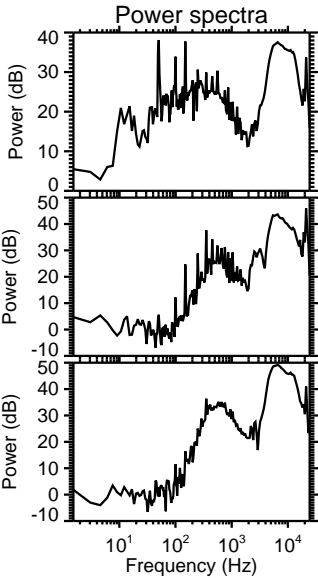
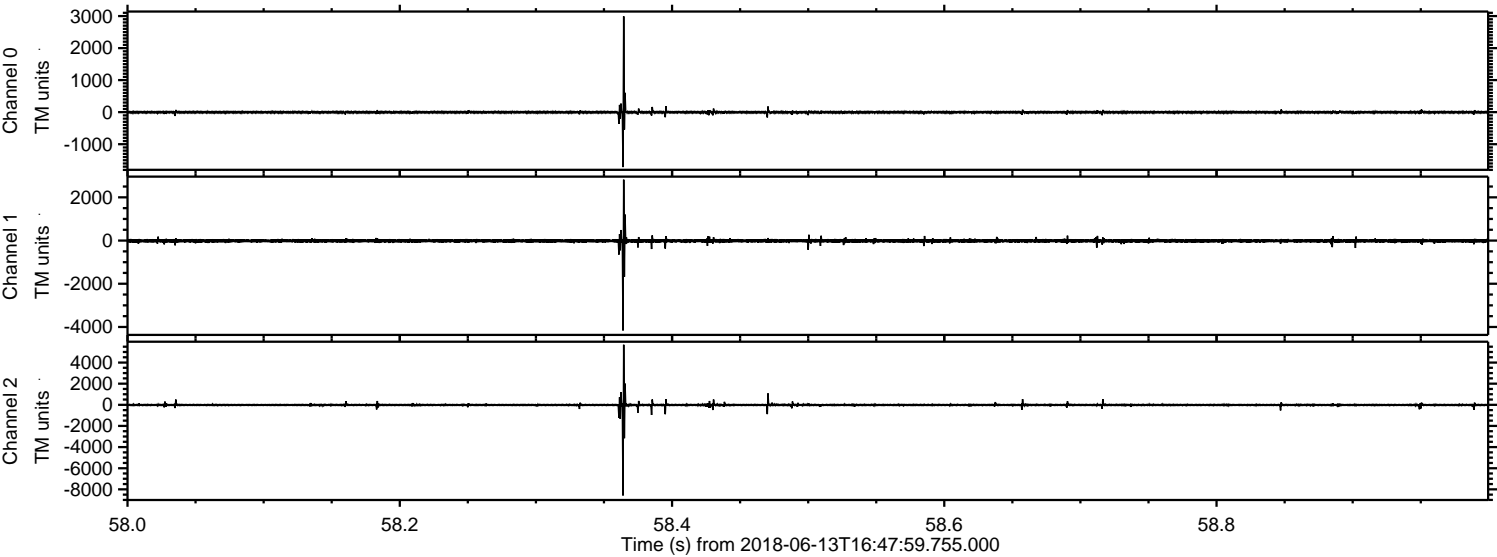
Processed Wed Jun 13 18:56:12 2018 by ELM ver.2012-10-06 from 001__elm20180613_164758__dat00.bin



Processed Wed Jun 13 18:56:18 2018 by ELM ver.2012-10-06 from 001__elm20180613_164758__dat00.bin

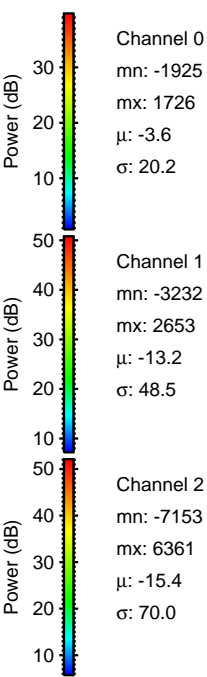
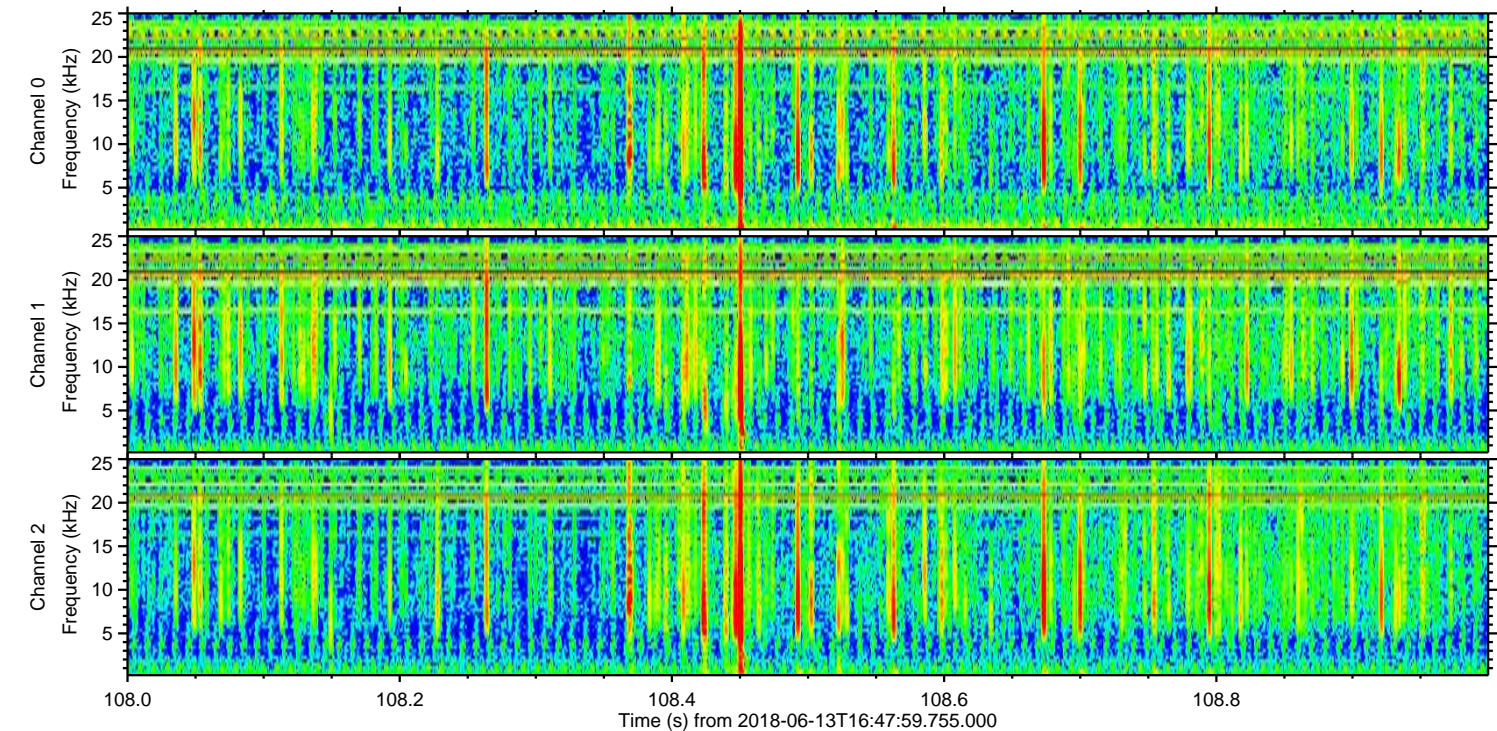
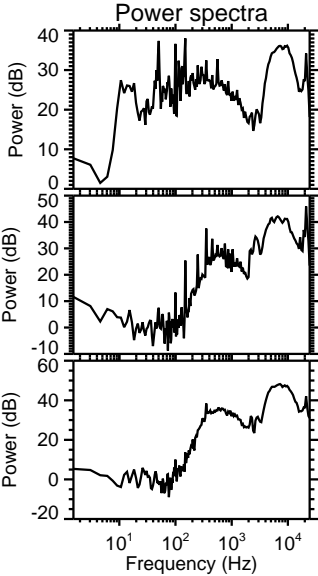
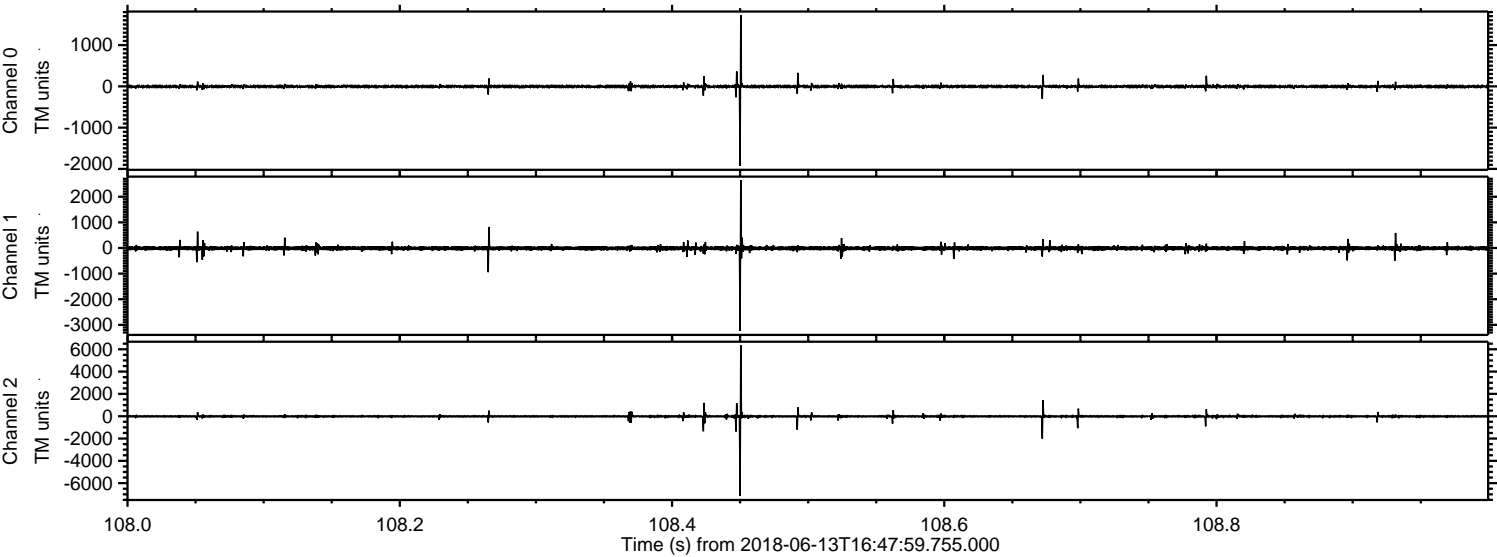


Processed Wed Jun 13 18:56:19 2018 by ELM ver.2012-10-06 from 001__elm20180613_164758__dat00.bin



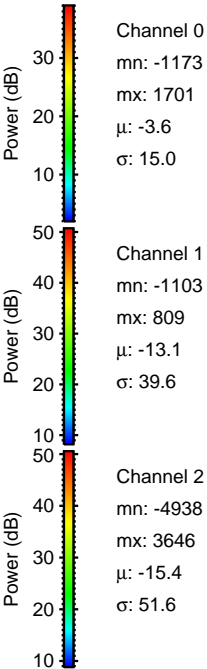
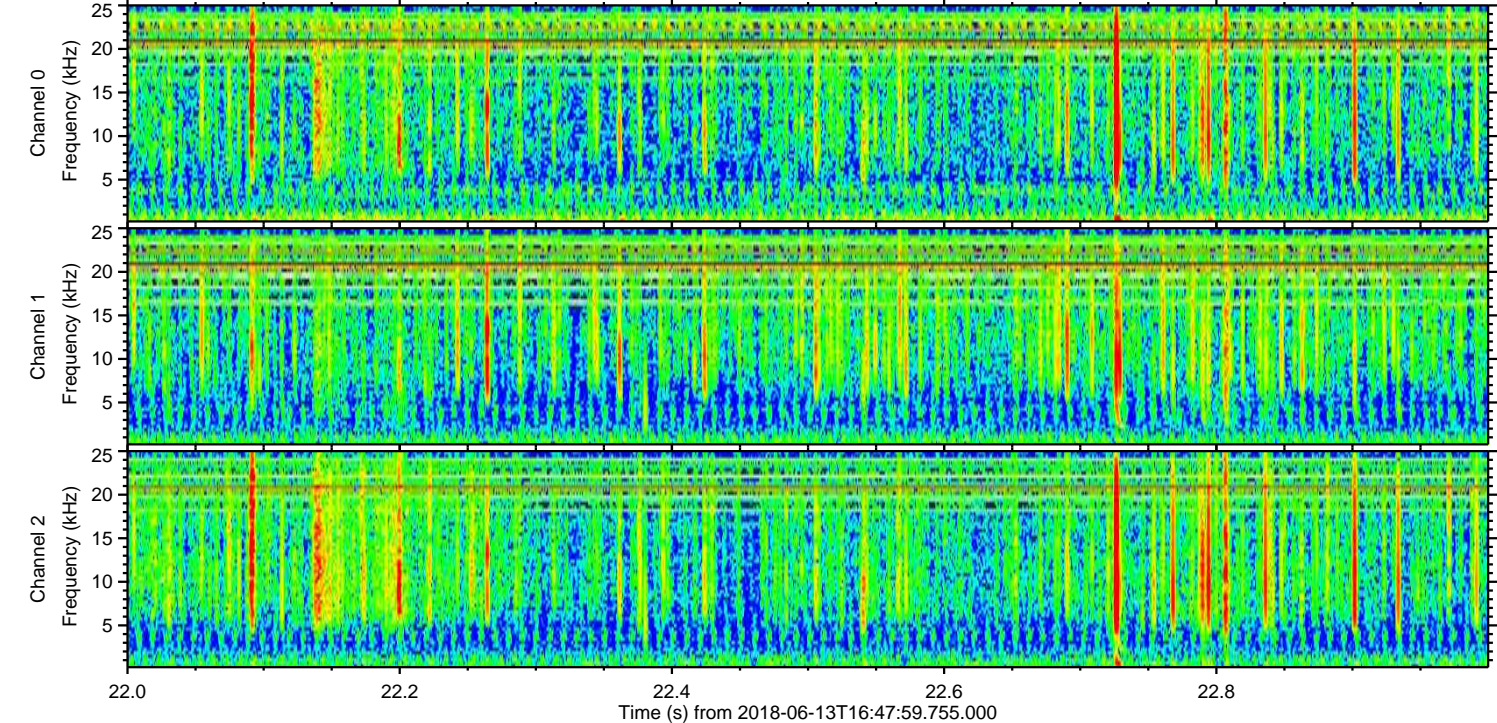
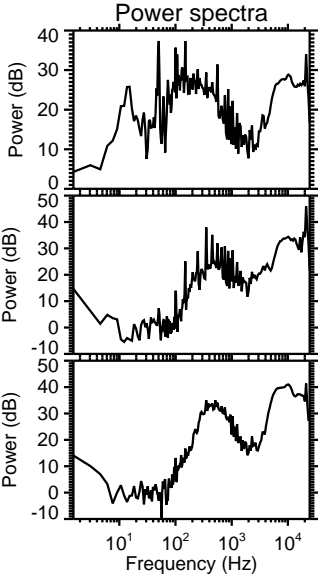
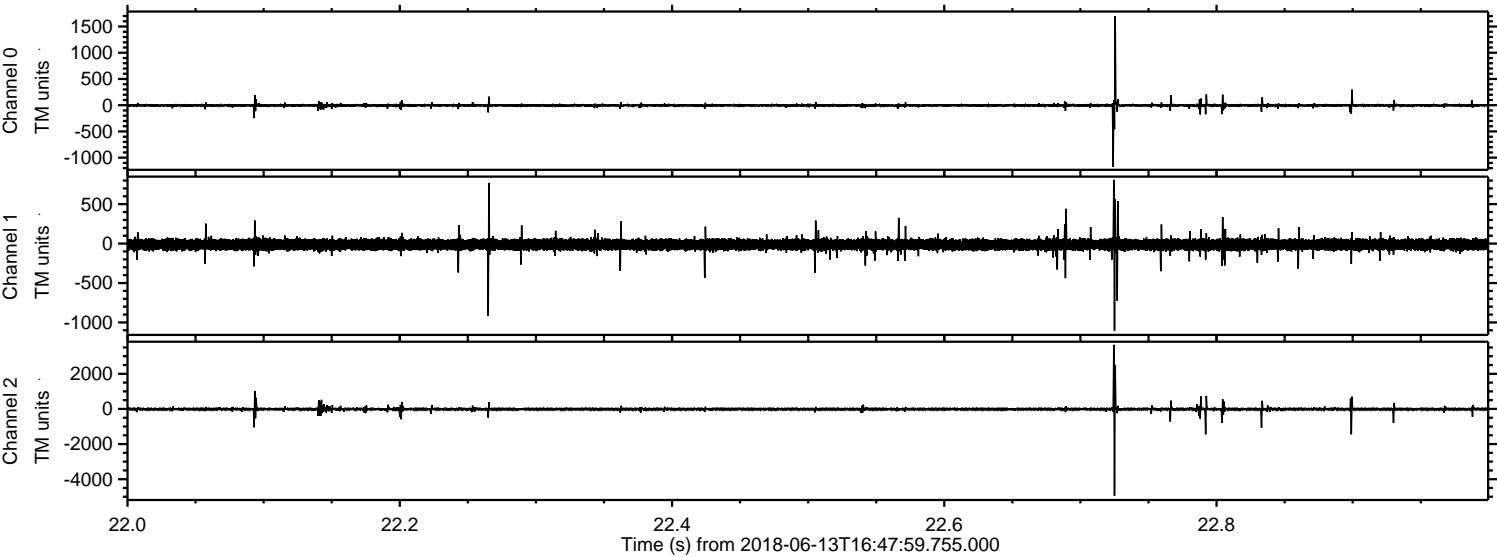
ELMAVAN 3D WAVEFORMS (Measured data sampled at 50 kHz) 51000 packets of 144 samples from 2018-06-13T16:47:59.755.000. Part 109/147

Processed Wed Jun 13 18:56:19 2018 by ELM ver.2012-10-06 from 001__elm20180613_164758__dat00.bin

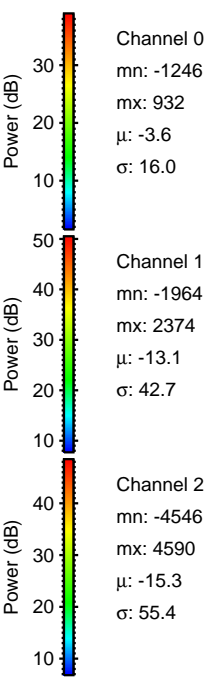
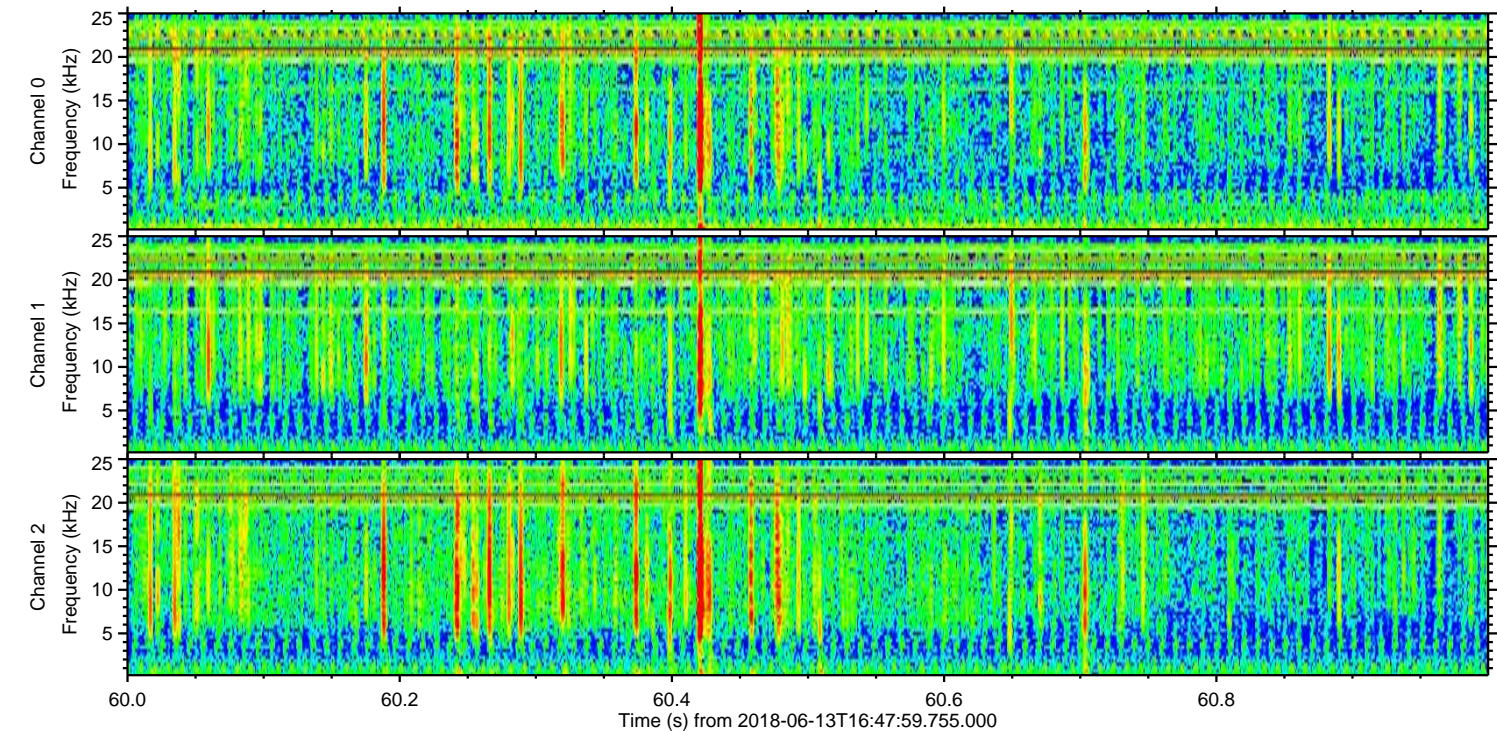
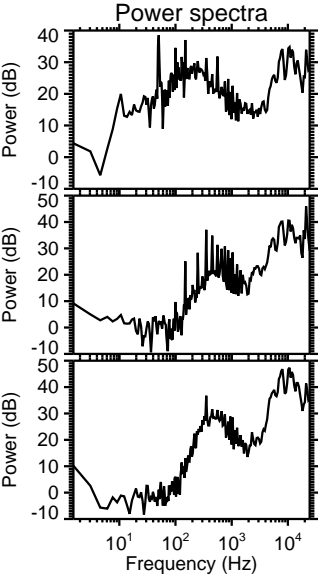
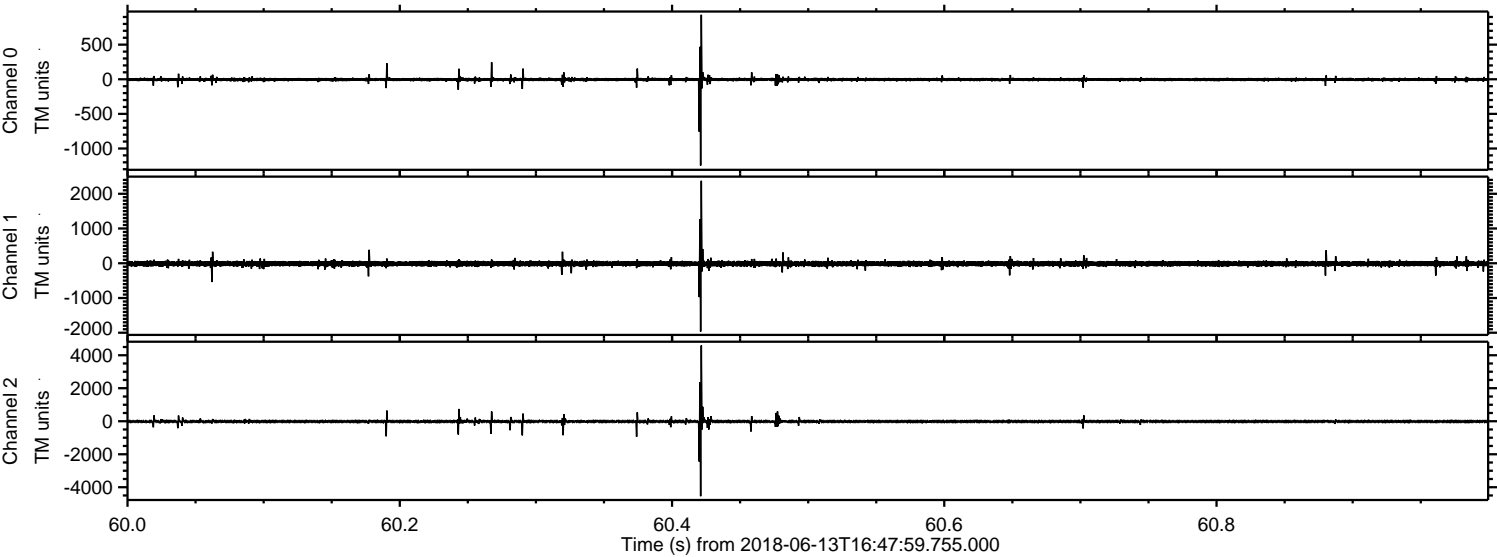


ELMAVAN 3D WAVEFORMS (Measured data sampled at 50 kHz) 51000 packets of 144 samples from 2018-06-13T16:47:59.755.000. Part 23/147

Processed Wed Jun 13 18:56:20 2018 by ELM ver.2012-10-06 from 001__elm20180613_164758__dat00.bin

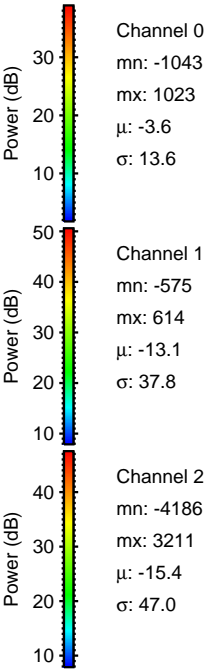
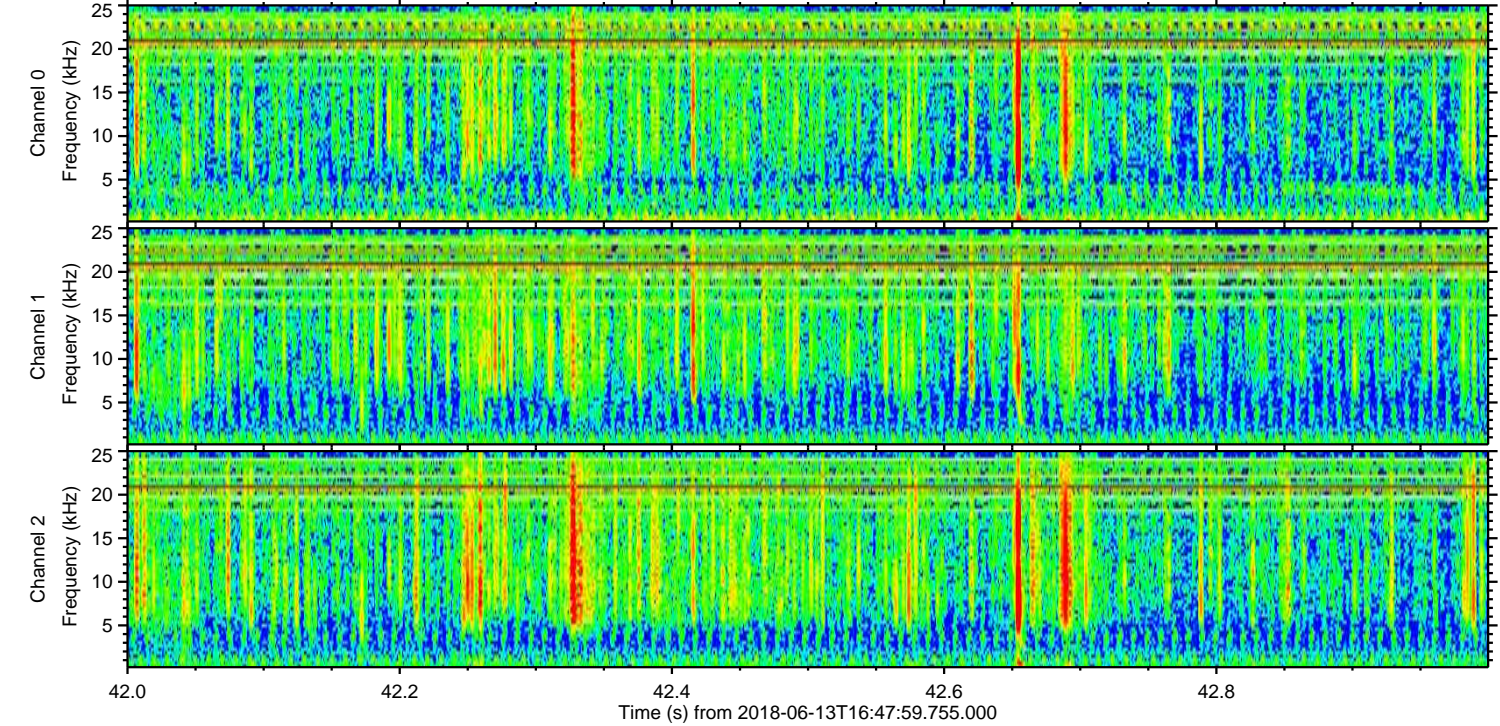
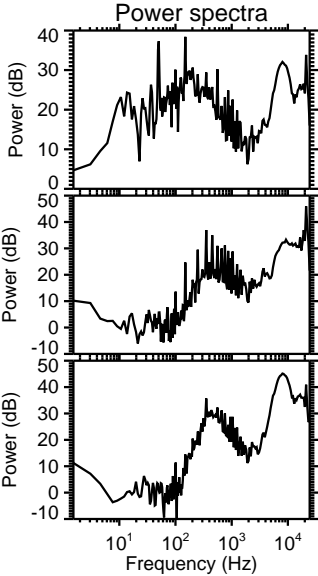
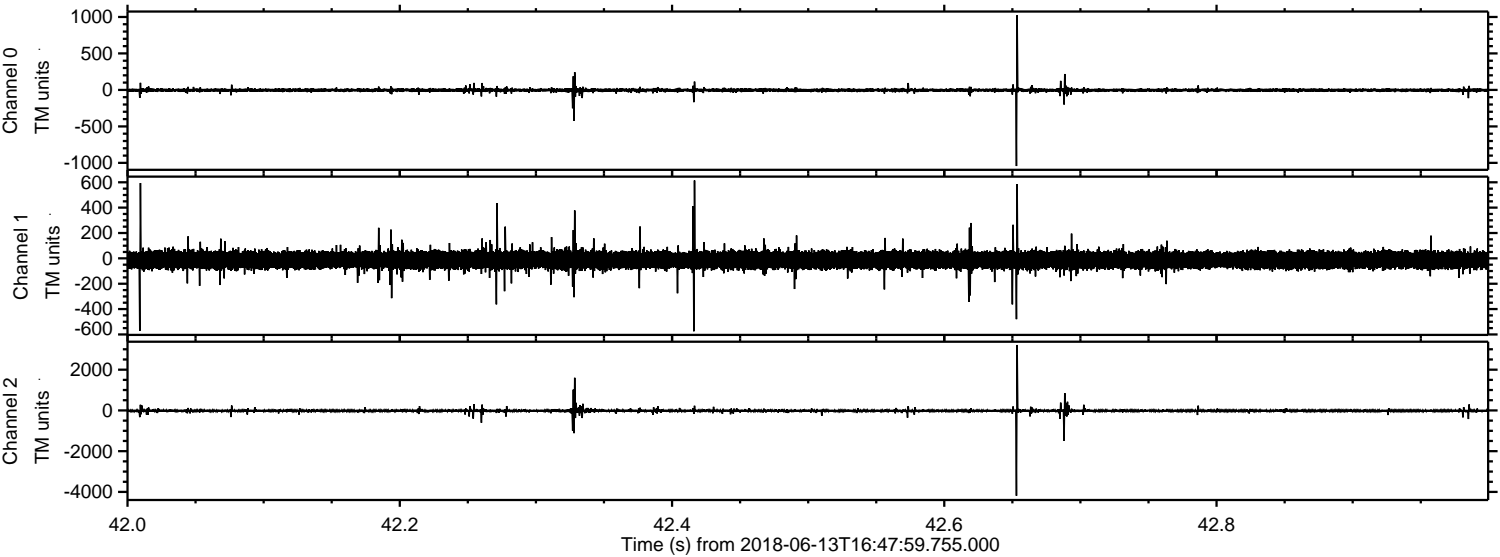


Processed Wed Jun 13 18:56:21 2018 by ELM ver.2012-10-06 from 001__elm20180613_164758__dat00.bin

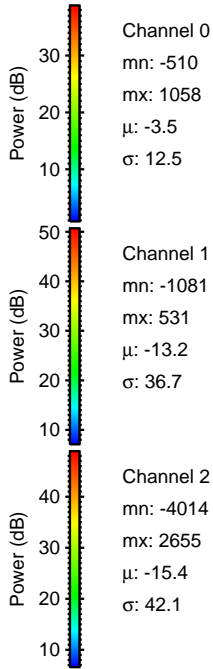
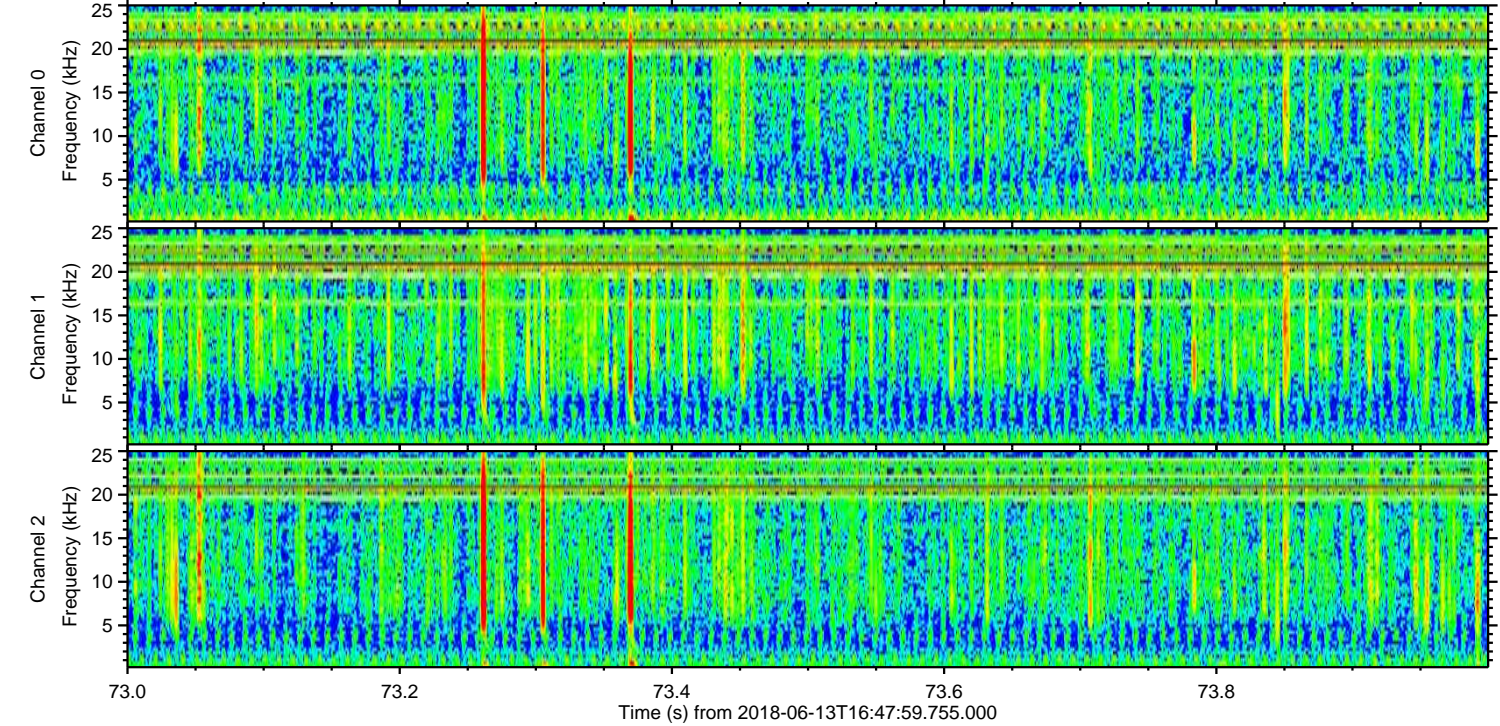
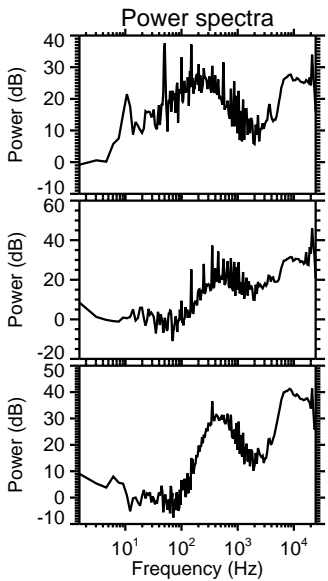
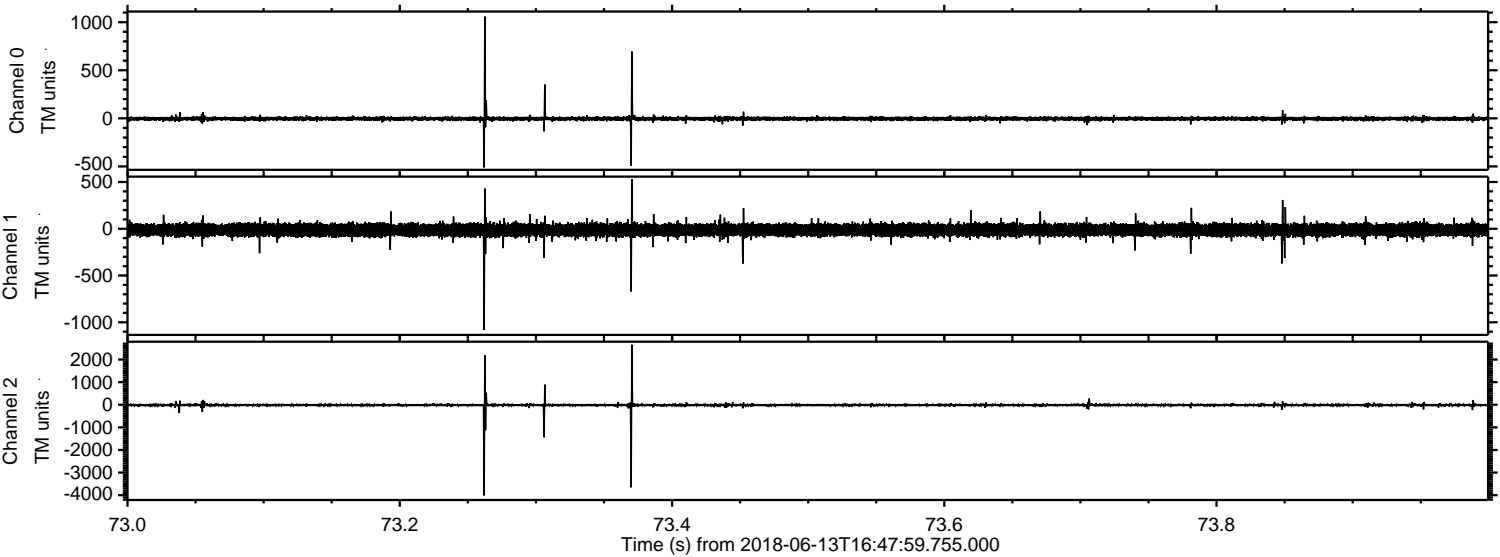


ELMAVAN 3D WAVEFORMS (Measured data sampled at 50 kHz) 51000 packets of 144 samples from 2018-06-13T16:47:59.755.000. Part 43/147

Processed Wed Jun 13 18:56:21 2018 by ELM ver.2012-10-06 from 001__elm20180613_164758__dat00.bin



Processed Wed Jun 13 18:56:22 2018 by ELM ver.2012-10-06 from 001__elm20180613_164758__dat00.bin

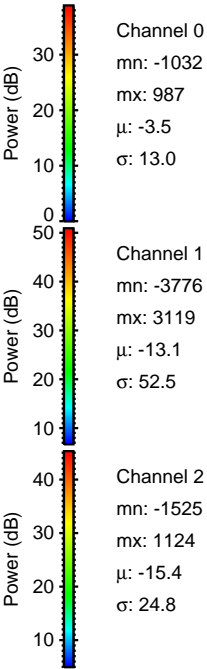
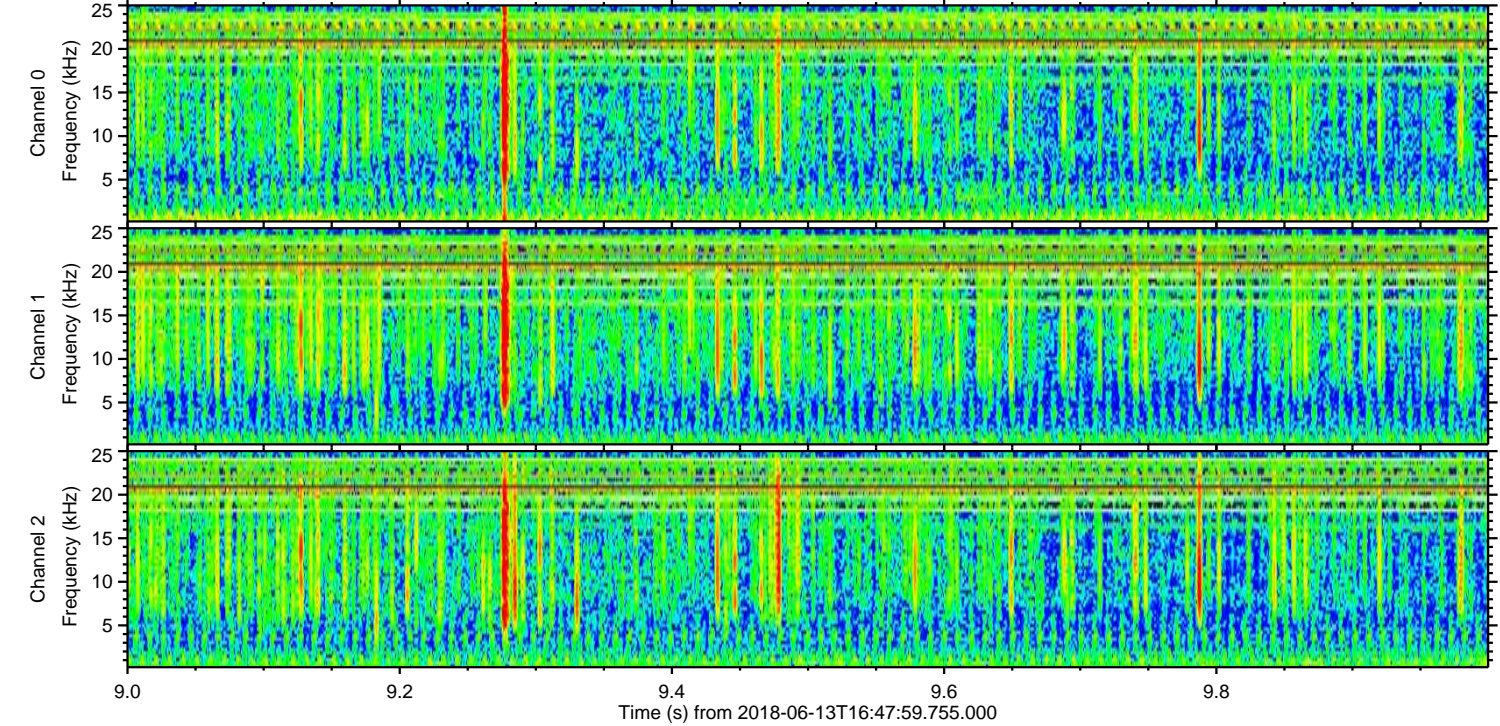
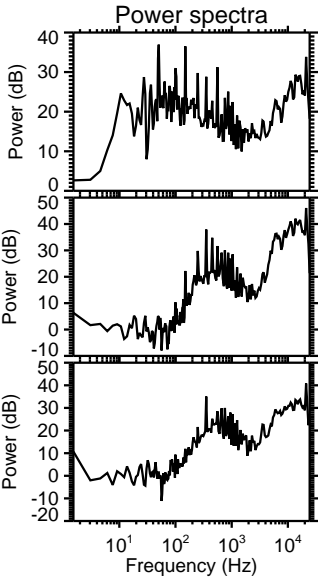
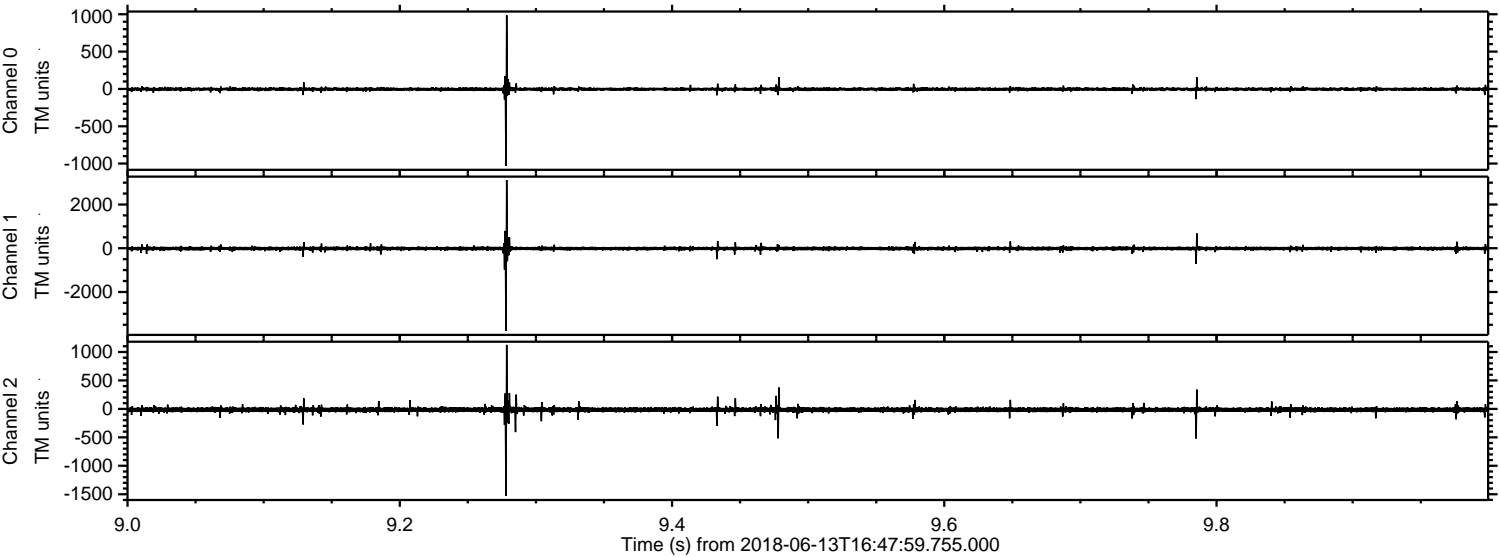


Channel 0
mn: -510
mx: 1058
 μ : -3.5
 σ : 12.5

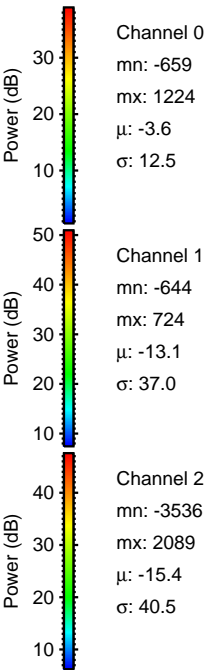
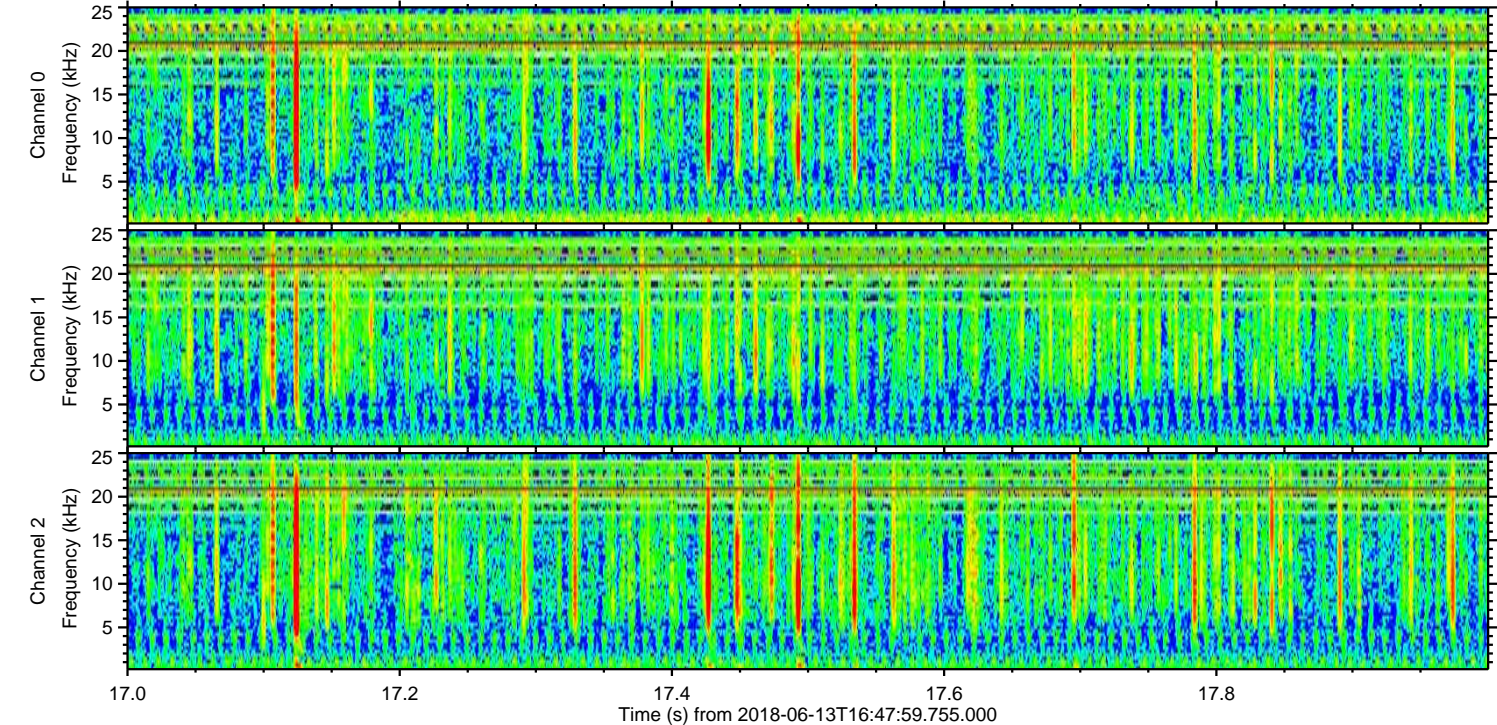
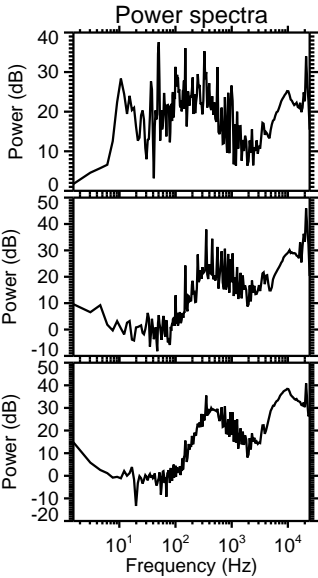
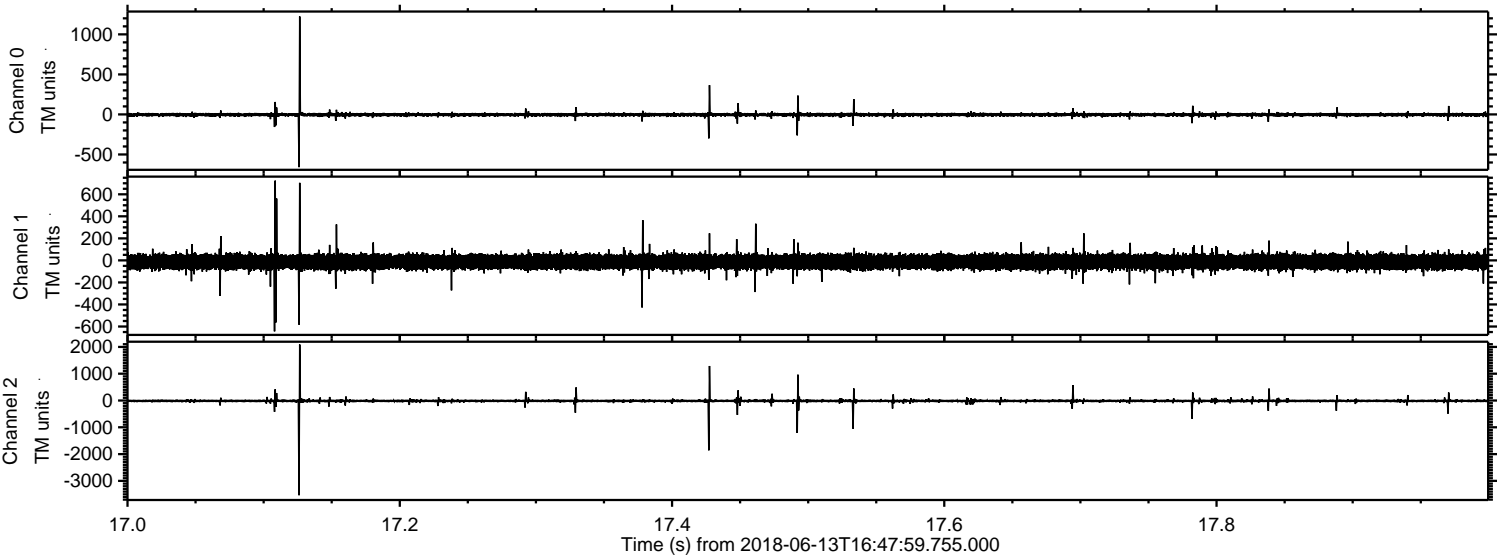
Channel 1
mn: -1081
mx: 531
 μ : -13.2
 σ : 36.7

Channel 2
mn: -4014
mx: 2655
 μ : -15.4
 σ : 42.1

Processed Wed Jun 13 18:56:23 2018 by ELM ver.2012-10-06 from 001__elm20180613_164758__dat00.bin



Processed Wed Jun 13 18:56:23 2018 by ELM ver.2012-10-06 from 001__elm20180613_164758__dat00.bin



Processed Wed Jun 13 18:56:24 2018 by ELM ver.2012-10-06 from 001__elm20180613_164758__dat00.bin

